

V&V Reference Report

L2 ASCDS Version : 8.4.3

Observation 13179 - L2 Version 3
Chandra X-Ray Center

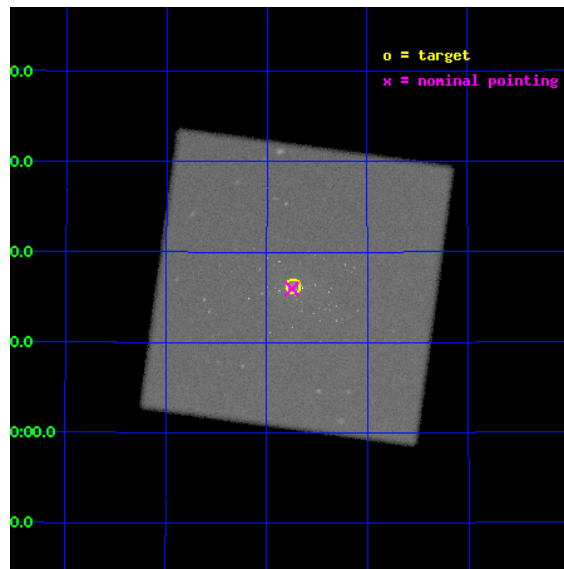
L2 Processing Date : Jul 27 2012

Contents

1	Front	2
2	OBI	3
2.1	OBI	3
2.1.1	Images	3
2.1.2	Parameters	4
2.1.3	Events	4
2.2	Compared Parameters	5
2.3	Aspect	6
2.4	Star Slots	9
2.4.1	Slot 3	9
2.4.2	Slot 4	10
2.4.3	Slot 5	11
2.4.4	Slot 6	12
2.4.5	Slot 7	13
2.5	FID Slots	14
2.5.1	Slot 0	14
2.5.2	Slot 1	15
2.5.3	Slot 2	16
A	Summary	17
A.1	Status	17
A.2	Comments	17

1 Front

seq_num	300290	Sequence number
obs_id	13179	Observation id
title	Resolving short supersoft source states of optical novae in the core of M31	Proposal title
observer	Dr. Peter Predehl	Principal investigator
object	M31	Source name
ra_targ	10.684583	Observer's specified target RA [deg]
dec_targ	41.269278	Observer's specified target Dec [deg]
ra_nom	10.687527964632	Nominal RA [deg]
dec_nom	41.26564224273	Nominal Dec [deg]
roll_nom	322.78624658196	Nominal Roll [deg]
revision	3	Processing version of data
ontime	17678.432165205	[s]
livetime	17482.882273762	Ontime multiplied by DTCOR
l2events	1355446	Number of level 2 events

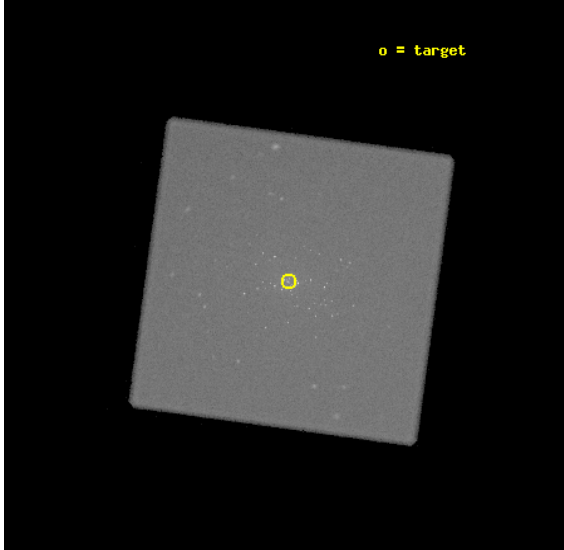


2 OBI

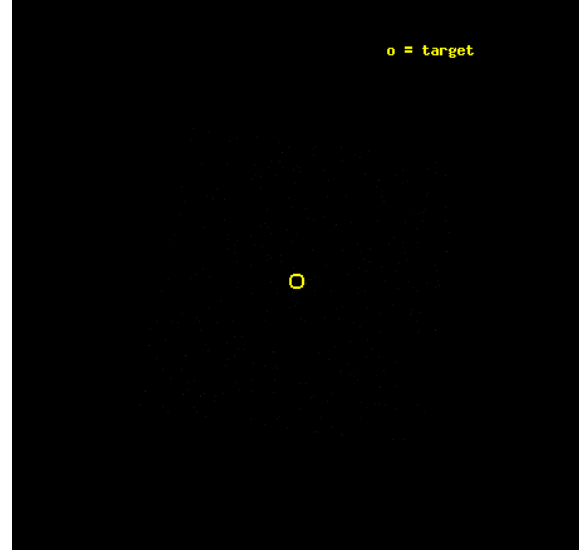
2.1 OBI

2.1.1 Images

Level 1 Image



Level 1 Bad Events



2.1.2 Parameters

obi_num	0	Obi number	sched_exp_time	17500.000000	[s] Scheduled observation exposure time
ascdsver	8.4.5	Processing system revision	ontime	17678.432165205	[s]
caldbver	4.5.1	 	l1events	1924531	Number of level 1 events
date	2012-07-27T20:16:40	Date and time of file creation			
revision	3	Processing version of data			

2.1.3 Events

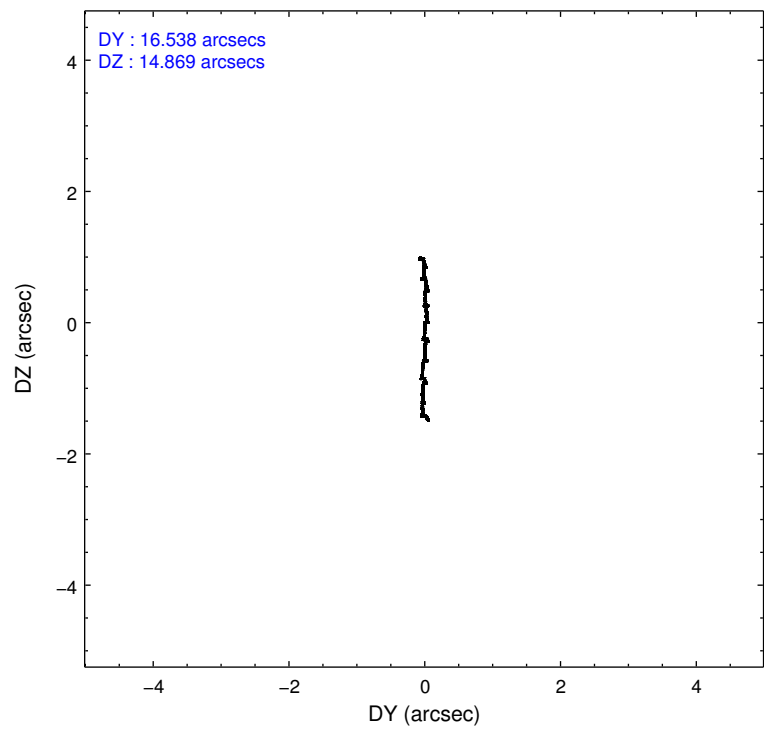
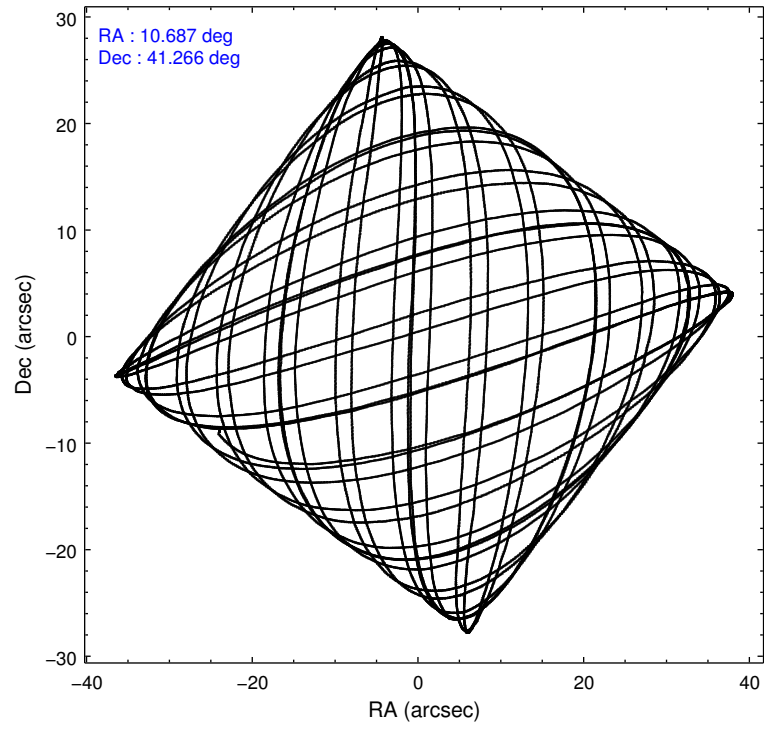
Level 1 Events

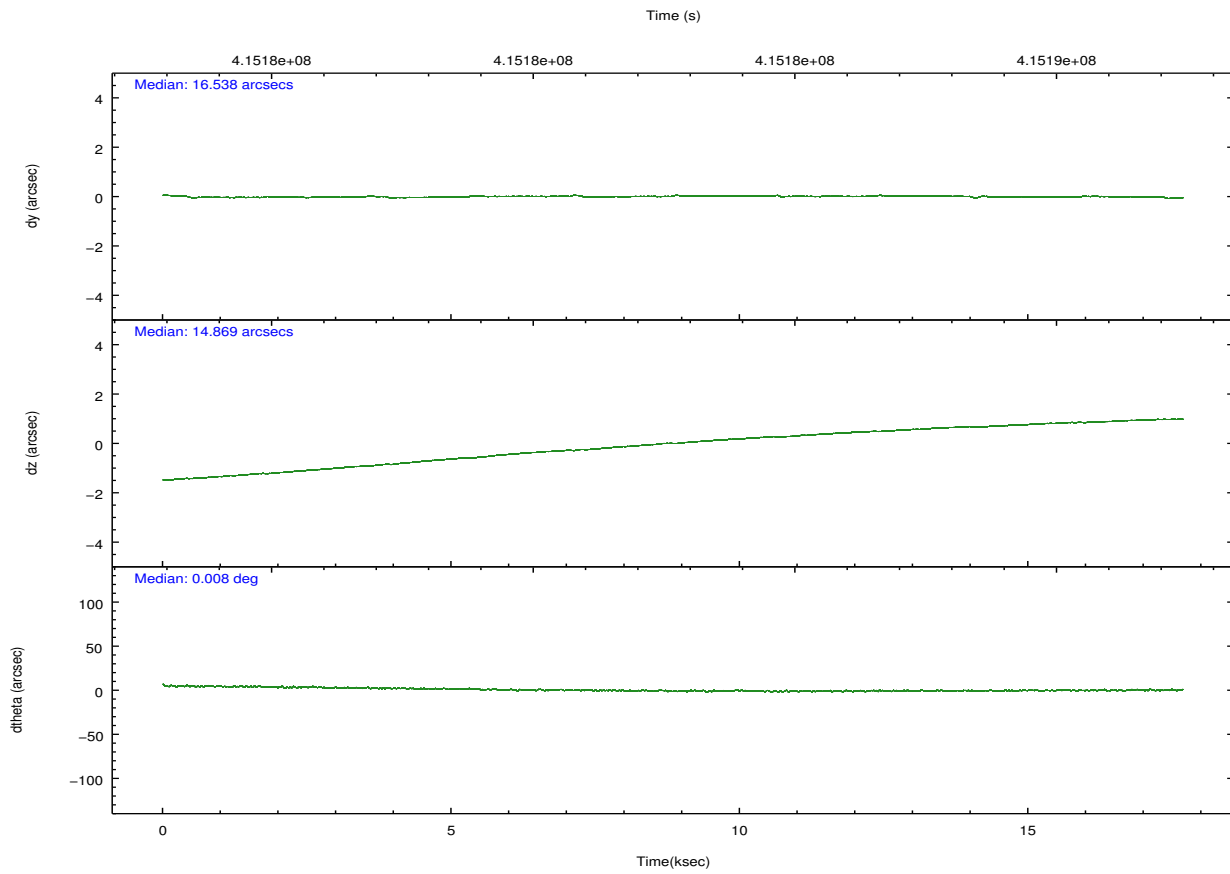
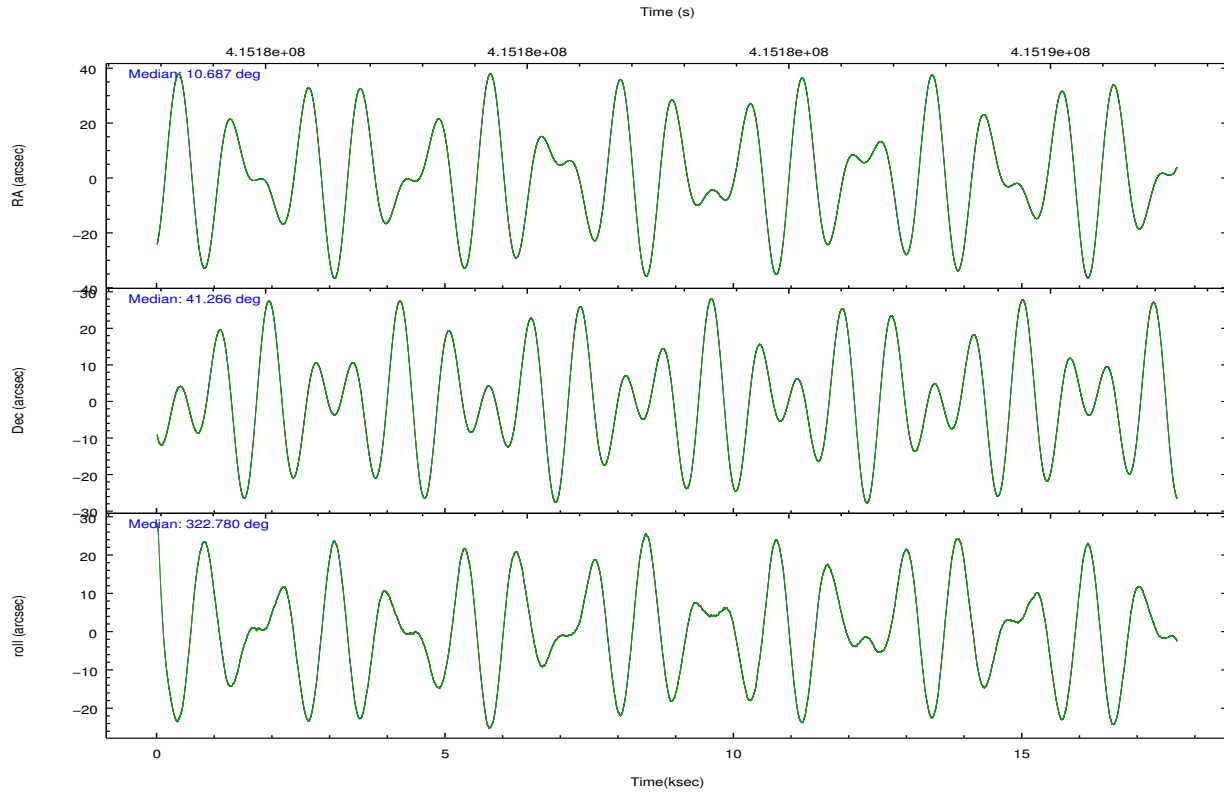
	segment 0
level 1 events	1924531
rejected events	29458
rejected %	1%

2.2 Compared Parameters

Parameter	Planned	Actual	Parameter	Planned	Actual
Instrument	HRC	HRC	Obspar format version number	7	7
Detector	HRC-I	HRC-I	Obspar file type	PREDICTED	ACTUAL
Grating	NONE	NONE	Obspar update status	NONE	UPDATED
Data mode	OBSERVING	OBSERVING			
Observation mode	POINTING	POINTING			
[deg] Pointing RA	10.651493	10.6875279646325			
[deg] Pointing Dec	41.268449	41.2656422427304			
[deg] Pointing Roll	322.905508	322.7862465819625			
[mm] SIM focus pos	-1.040293	-1.038866356238299			
[mm] SIM defocus	0	0.001426264420575141			
[mm] SIM translation stage pos	126.985494	126.9829799899862			
[mm] SIM translation stage offset	0	0.002508901615314585			
[s] Observation start time (MET)	415174014.184000	415173292.1659			
Observation start date	2011-02-27T06:05:48	2011-02-27T05:54:52			
[s] Observation end time (MET)	415191514.184000	415192458.12939			
Observation end date	2011-02-27T10:57:28	2011-02-27T11:14:18			

2.3 Aspect



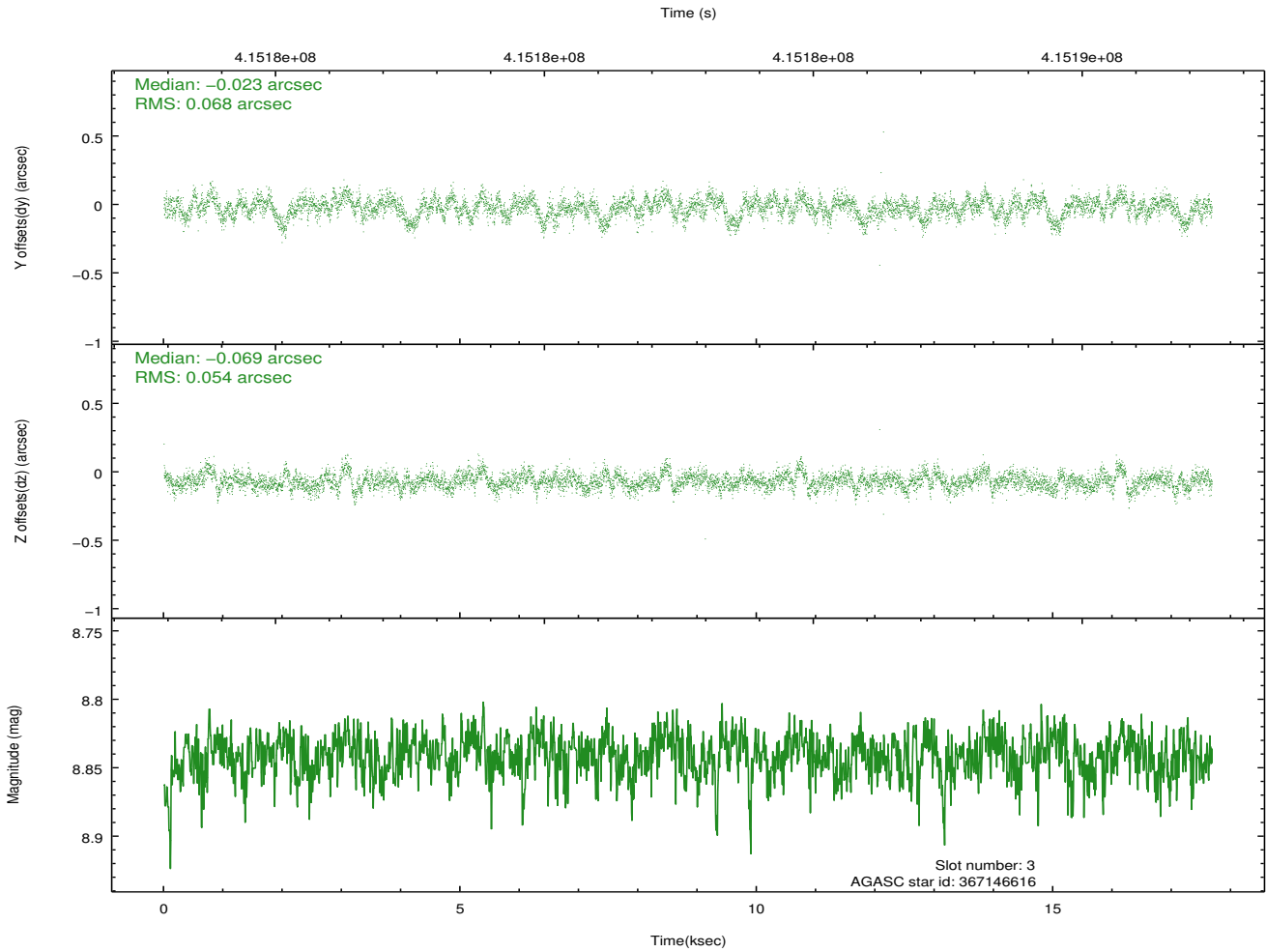
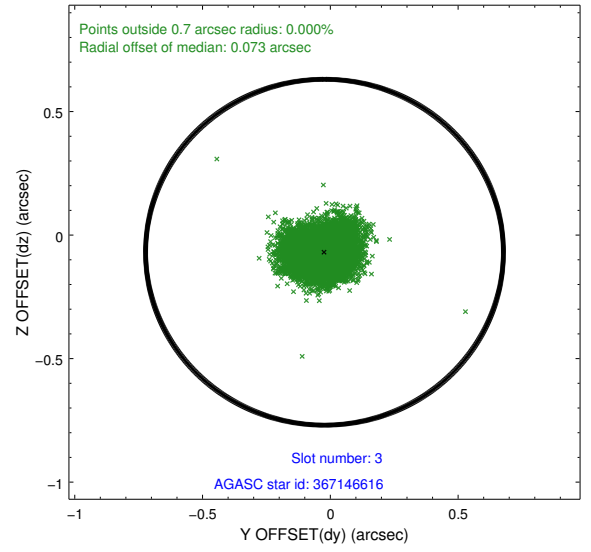
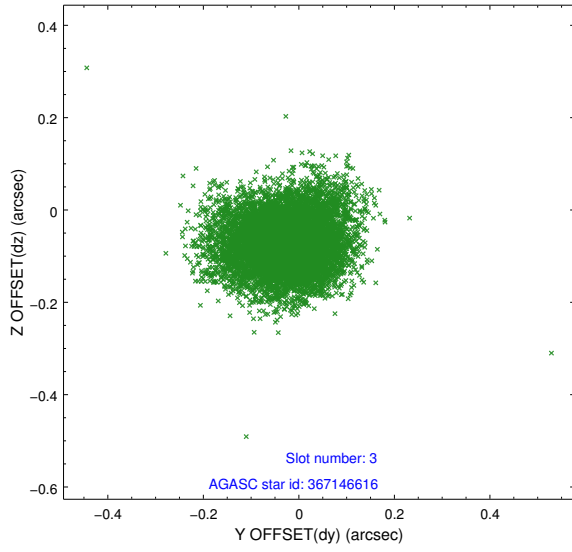


Slot Statistics

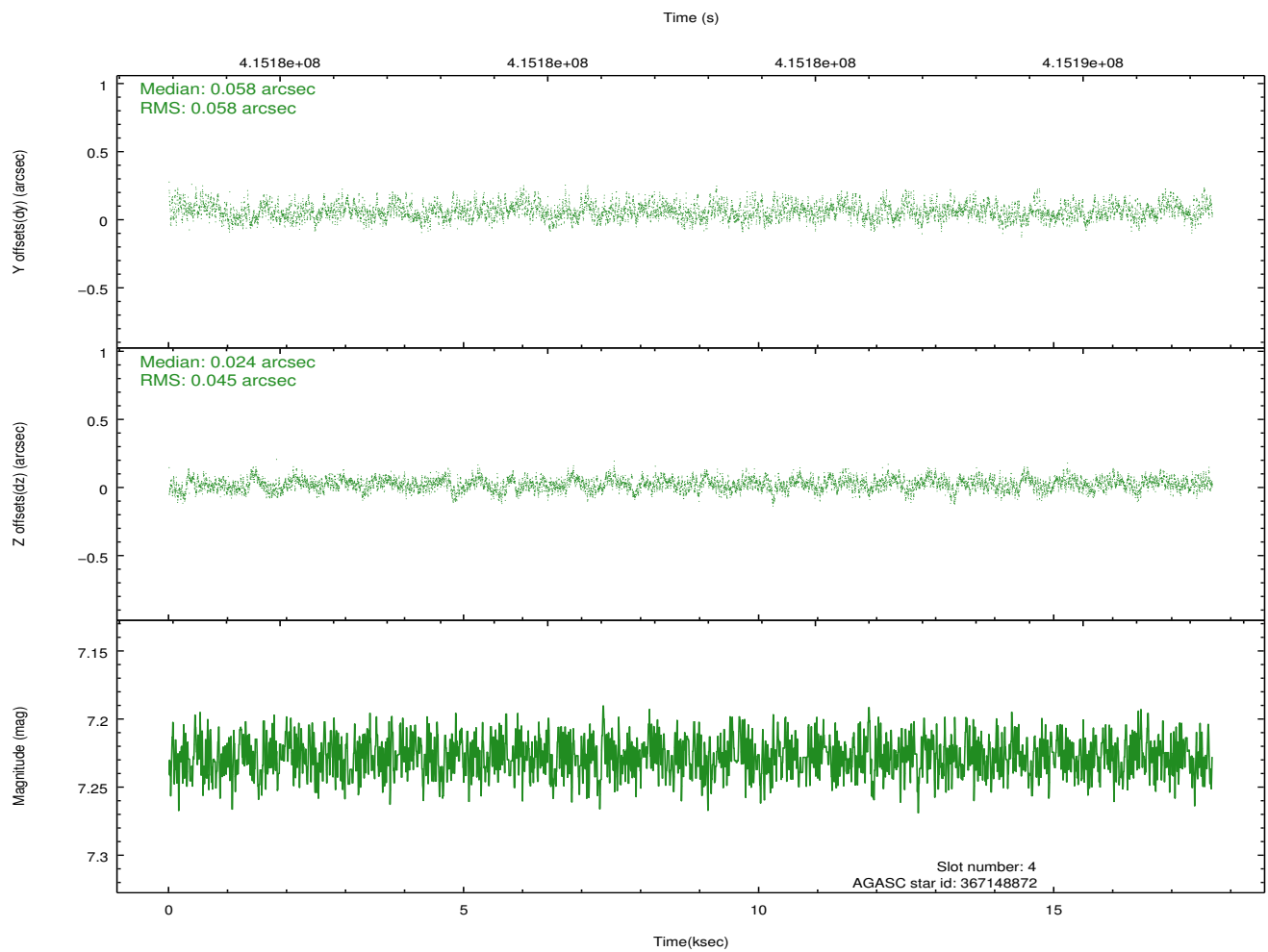
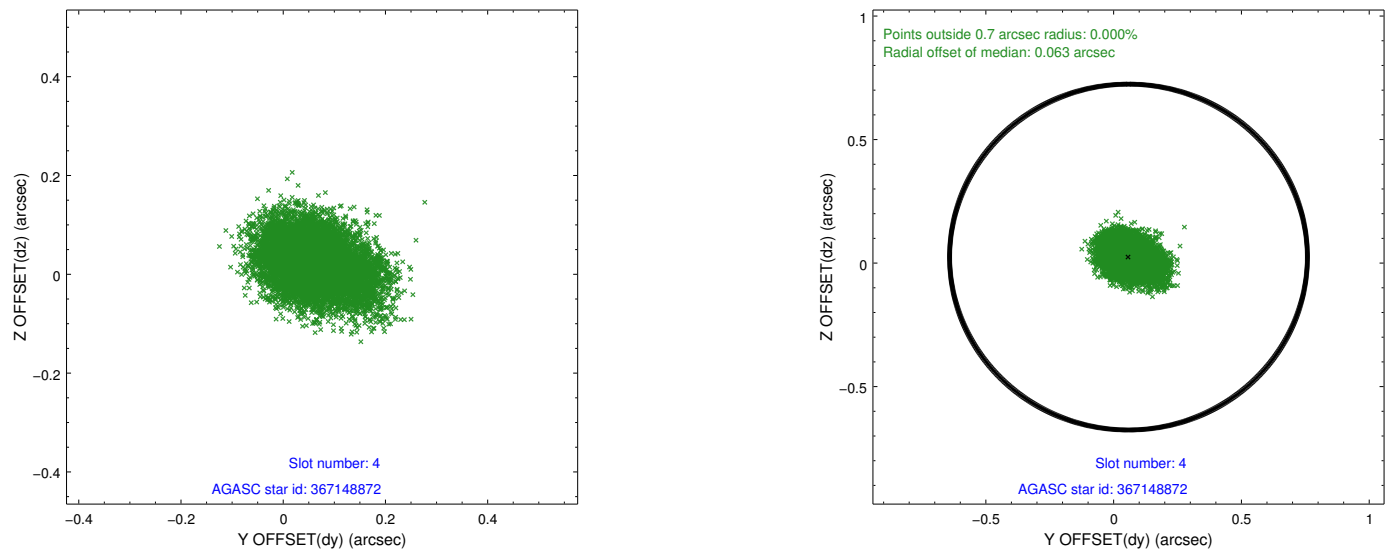
slot	status	id	mag	n_pts	med_dy	med_dz	dr1	dr2	ra	dec	mean_y	mean_z
0	FID	HRC-I-1	6.97	4311	-0.089	0.009	0.017	0.036	0.000000	0.000000	-772.46	-1302.84
1	FID	HRC-I-2	7.00	4312	0.204	-0.077	0.014	0.046	0.000000	0.000000	840.29	-1304.80
2	FID	HRC-I-3	7.04	4312	0.006	-0.020	0.013	0.033	0.000000	0.000000	-1200.67	1001.38
3	GUIDE	367146616	8.84	8619	-0.023	-0.069	0.091	0.152	11.418645	41.190163	1822.25	1036.21
4	GUIDE	367148872	7.23	8624	0.058	0.024	0.077	0.129	10.505940	40.688258	943.69	-1905.75
5	GUIDE	367657896	9.00	8596	0.108	-0.051	0.114	0.179	11.197765	41.313576	1077.70	1024.13
6	GUIDE	367663272	9.27	8609	0.018	0.106	0.115	0.193	10.656279	41.699429	-925.76	1244.60
7	GUIDE	367674552	8.85	8601	-0.159	-0.010	0.099	0.157	11.016238	41.570845	125.72	1462.66

2.4 Star Slots

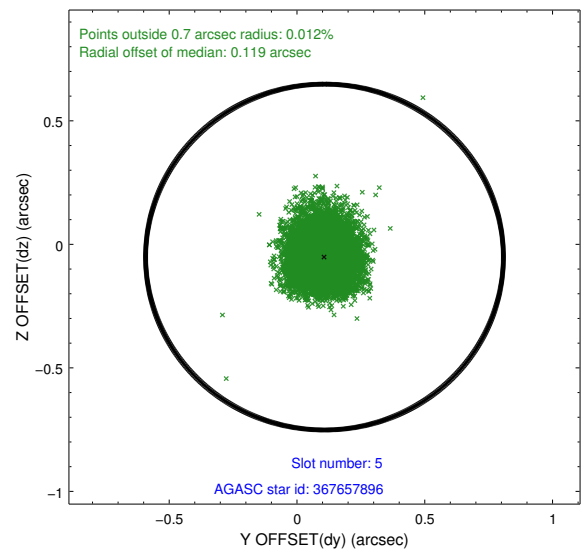
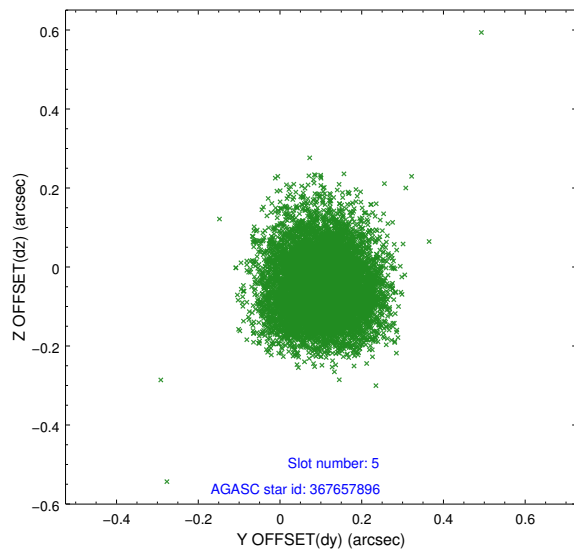
2.4.1 Slot 3



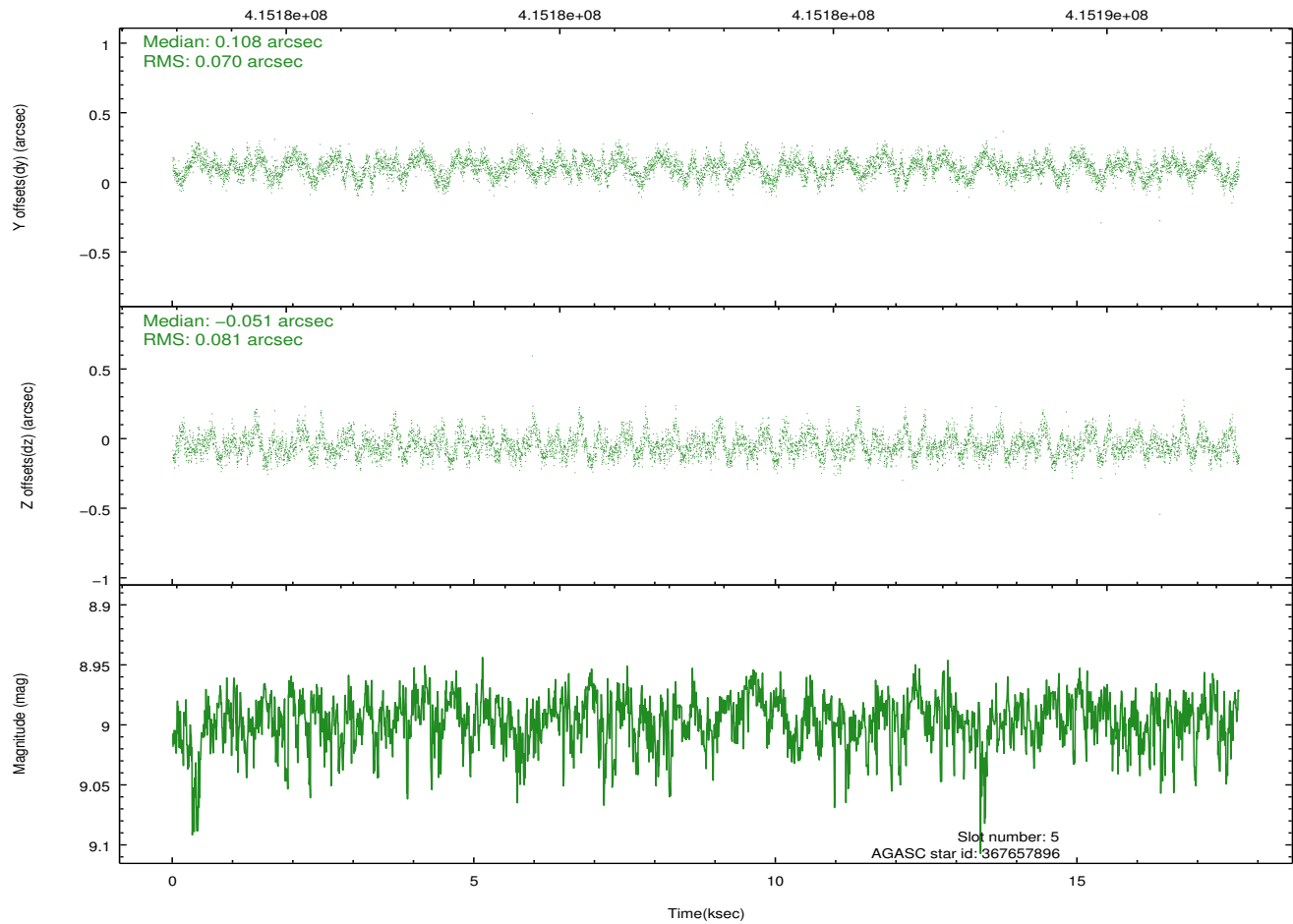
2.4.2 Slot 4



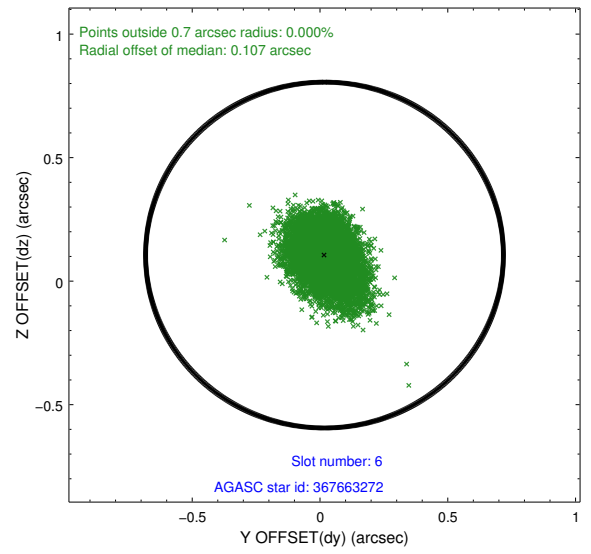
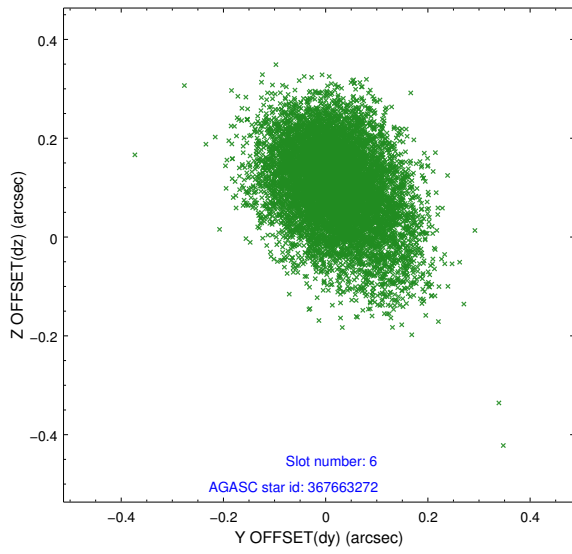
2.4.3 Slot 5



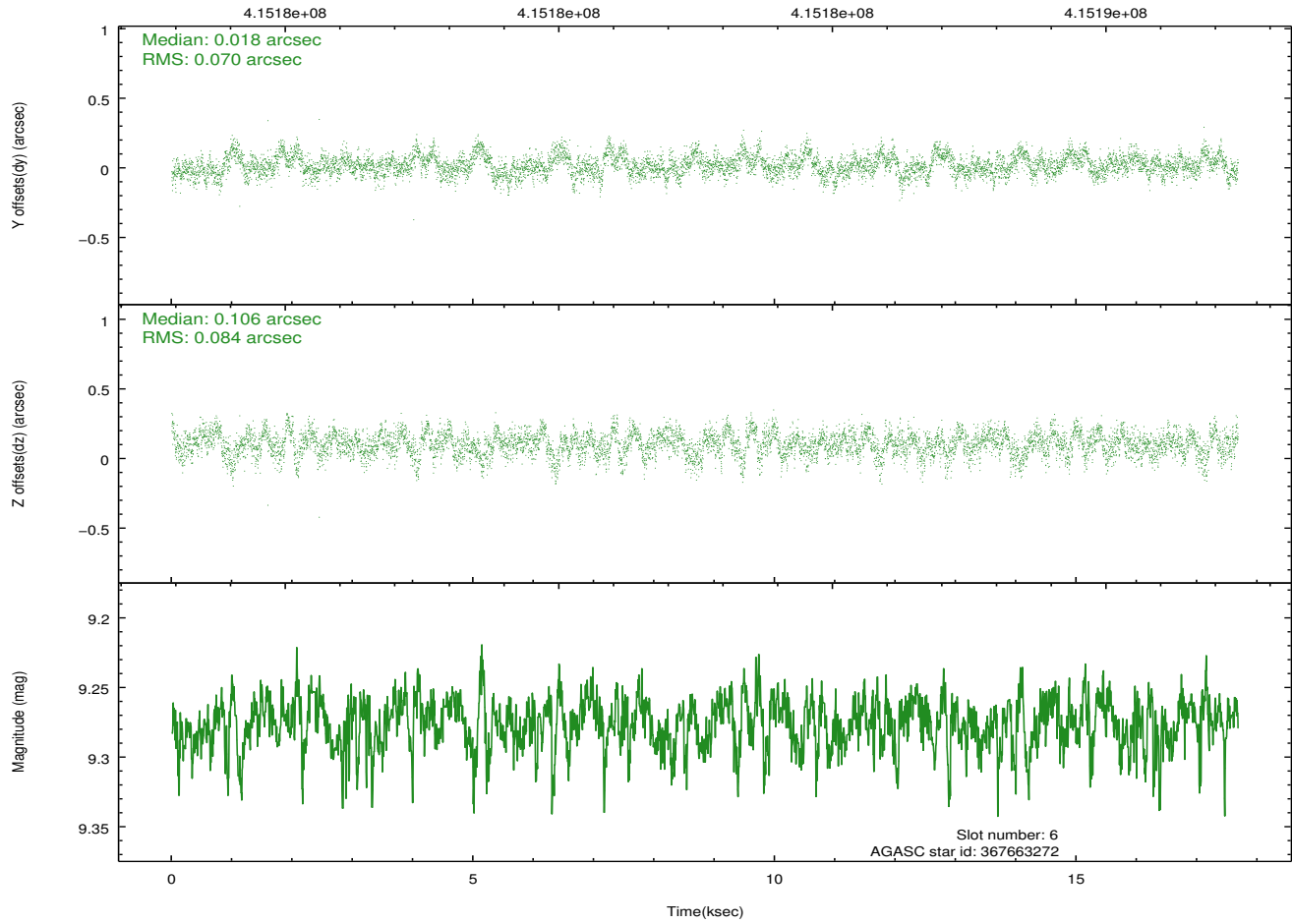
Time (s)



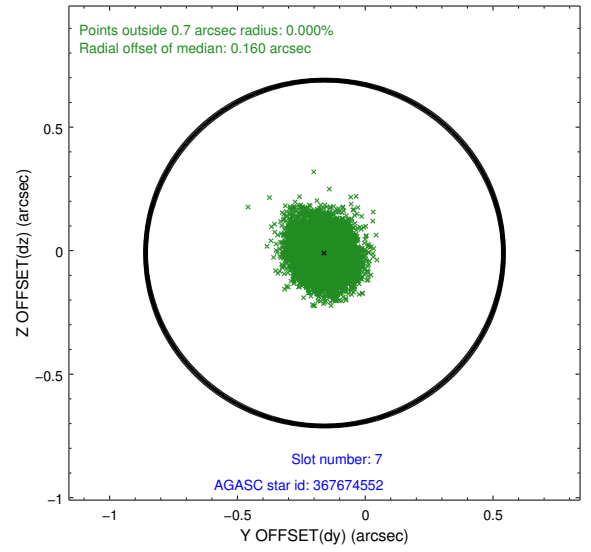
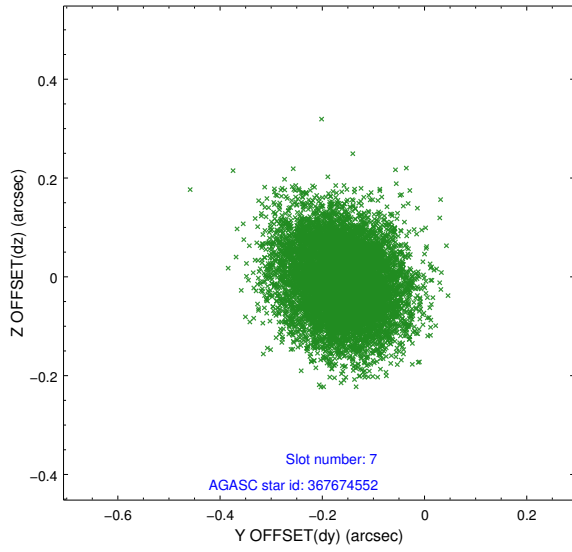
2.4.4 Slot 6



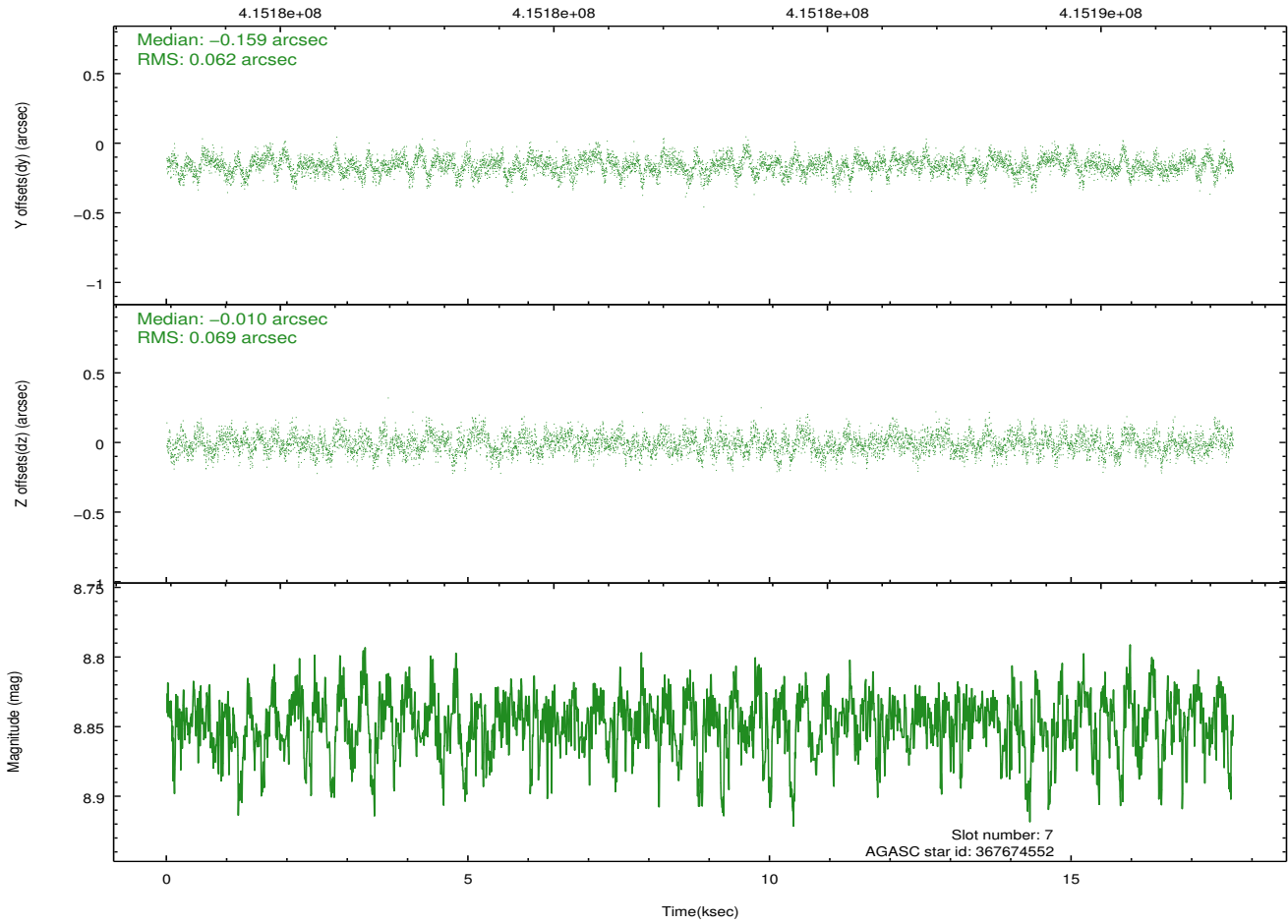
Time (s)



2.4.5 Slot 7

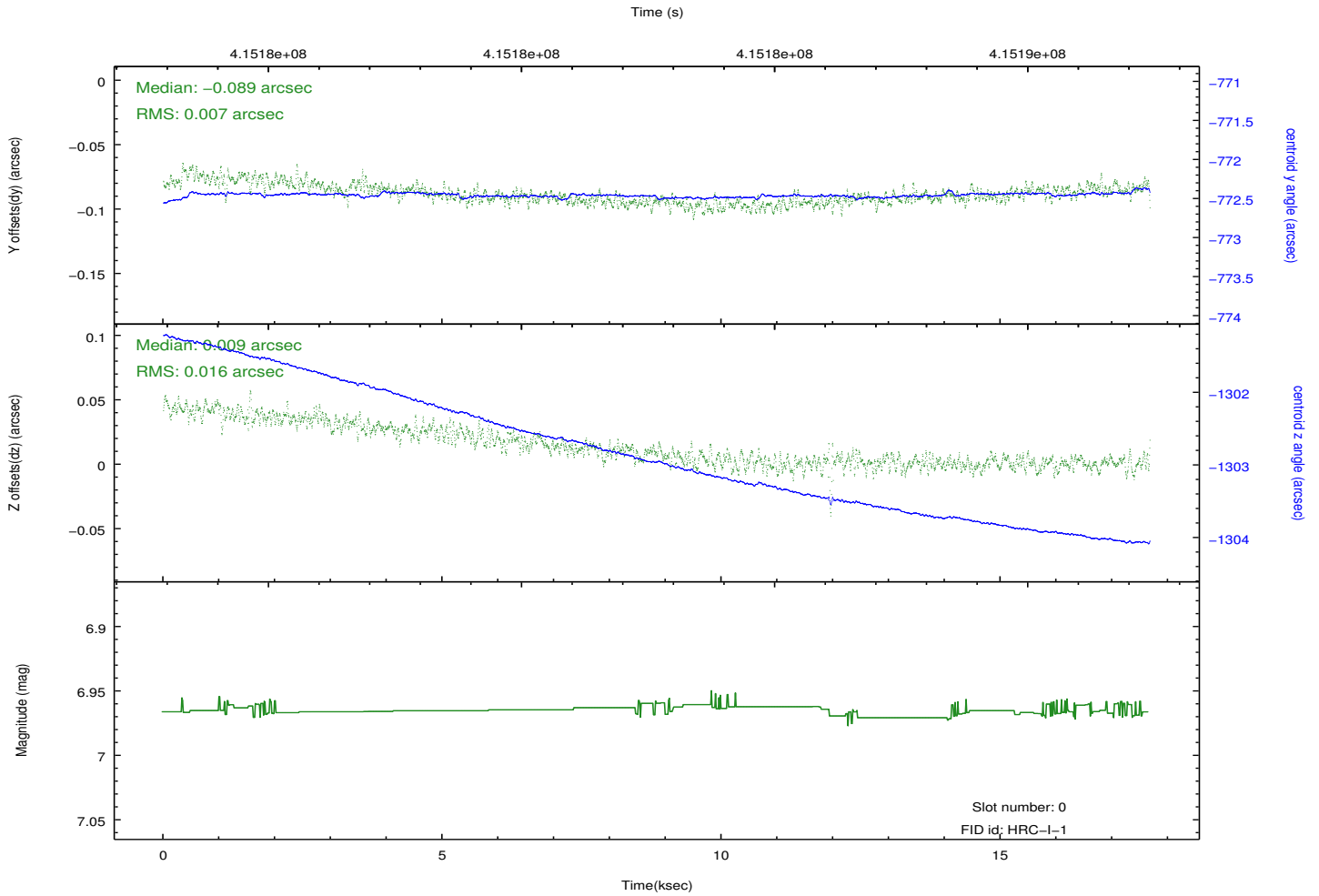
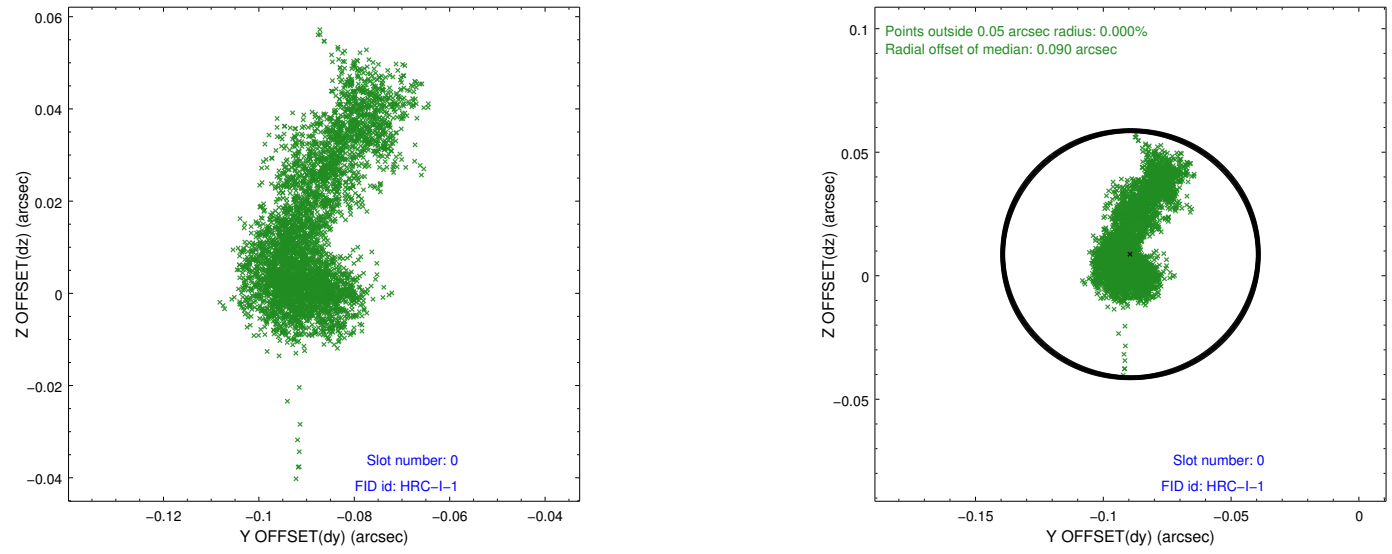


Time (s)

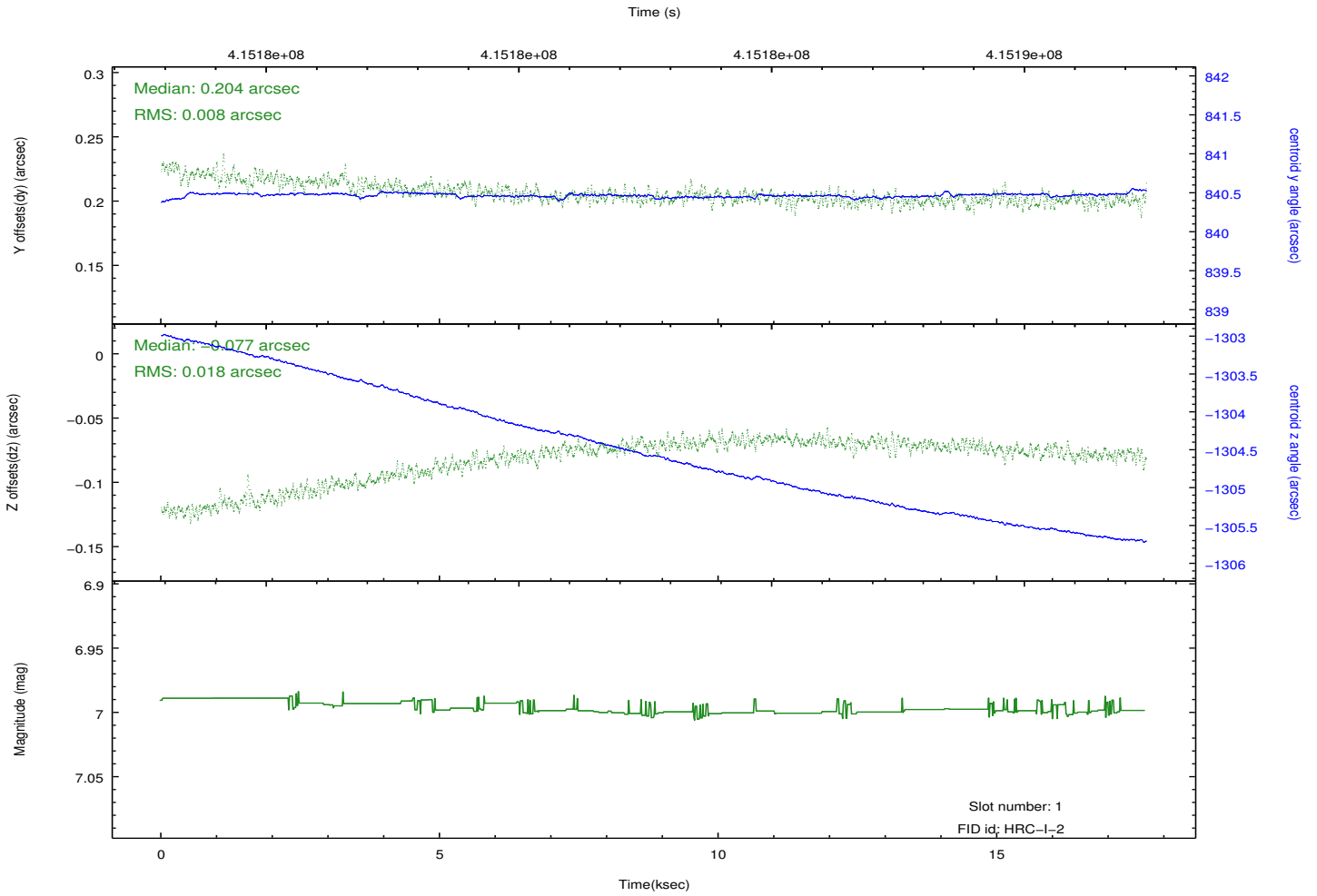
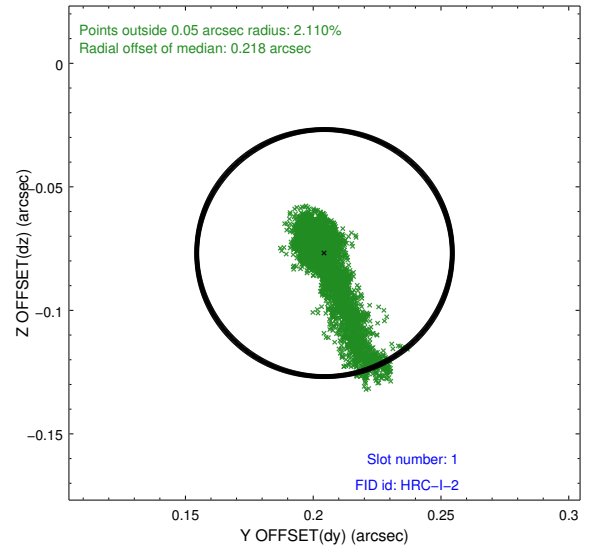
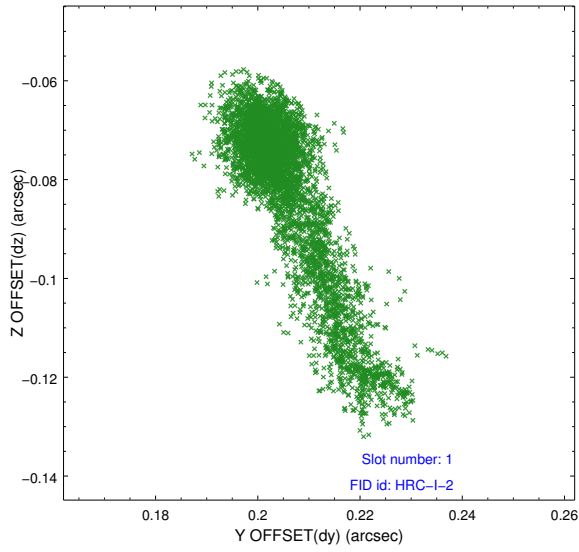


2.5 FID Slots

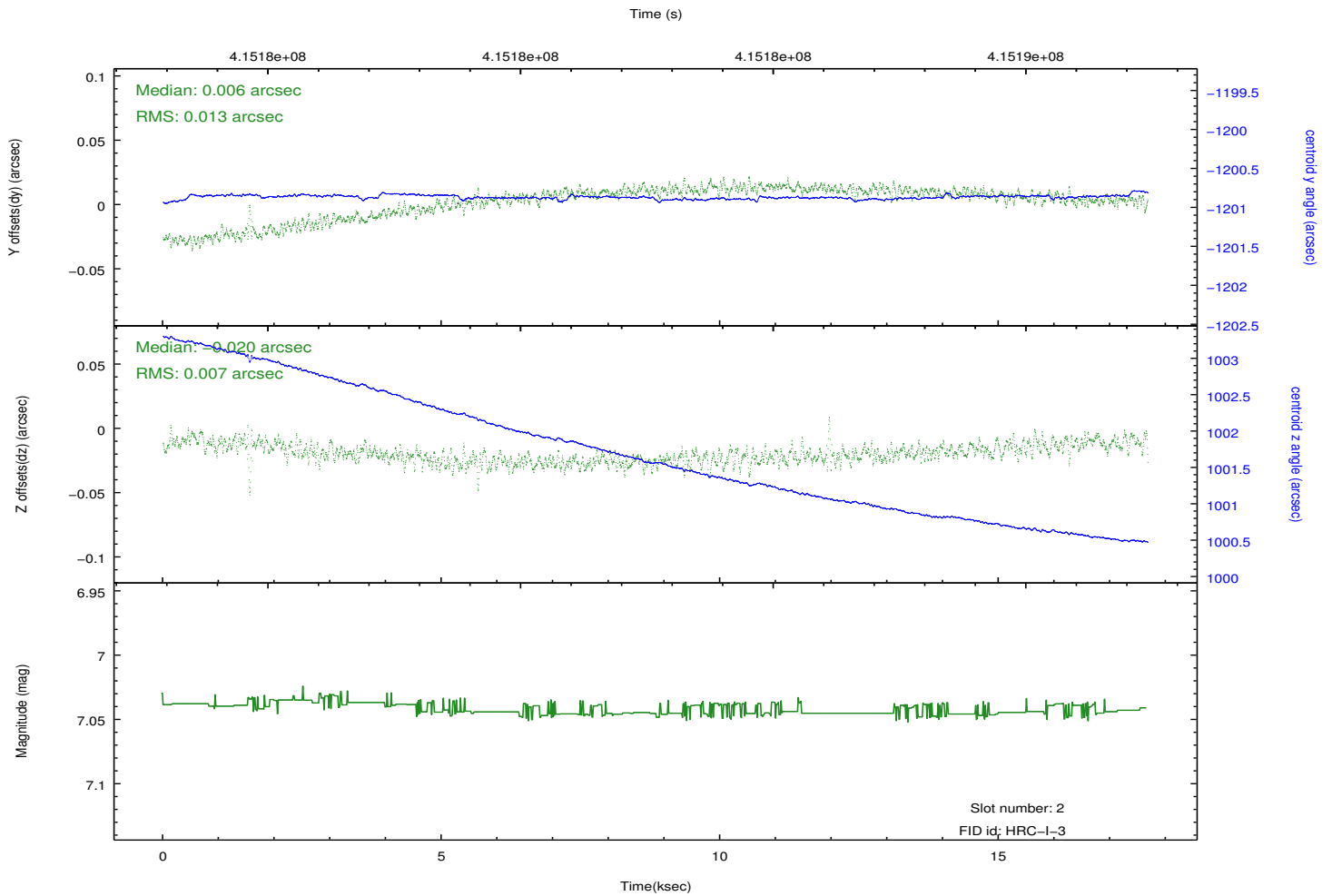
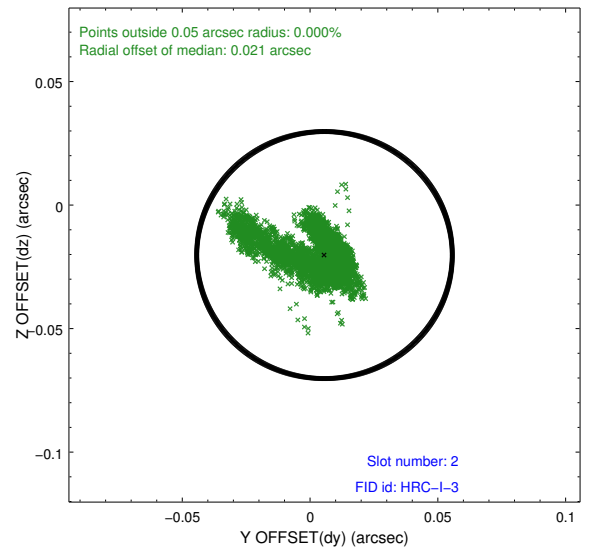
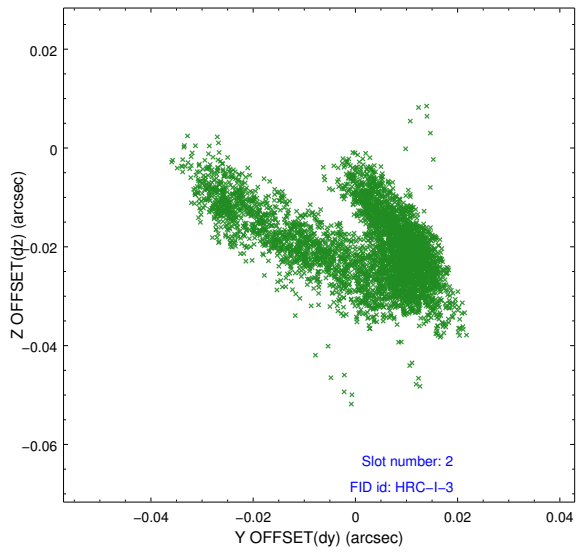
2.5.1 Slot 0



2.5.2 Slot 1



2.5.3 Slot 2



A Summary

A.1 Status

V&V Scientist	Beth Sundheim
V&V Date (YYYY-MM-DD)	2012.07.29
V&V Edition	1
V&V Disposition and Status	OK
V&V Charge Time	17.678432165205

A.2 Comments