

# V&V Reference Report

## L2 ASCDS Version : 8.4.3

Observation 13389 - L2 Version 1  
Chandra X-Ray Center

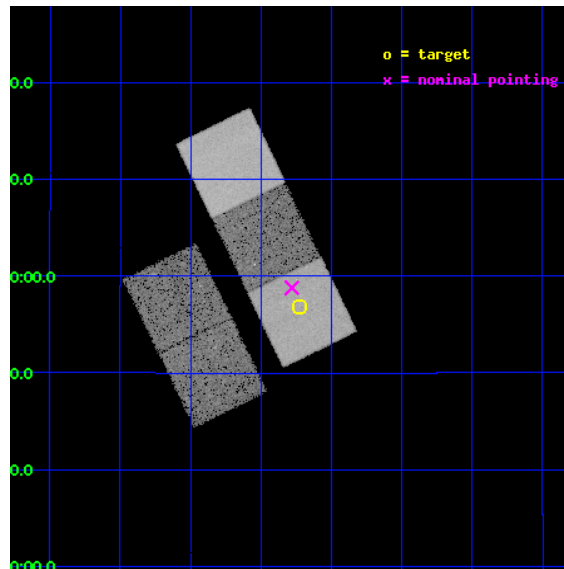
L2 Processing Date : Jan 7 2012

## Contents

<b>1</b>	<b>Front</b>	<b>2</b>
<b>2</b>	<b>OBI</b>	<b>3</b>
2.1	OBI . . . . .	3
2.1.1	Images . . . . .	3
2.1.2	Bias . . . . .	3
2.1.3	Parameters . . . . .	4
2.1.4	Events . . . . .	4
2.2	Compared Parameters . . . . .	5
2.3	Aspect . . . . .	6
2.4	Star Slots . . . . .	9
2.4.1	Slot 3 . . . . .	9
2.4.2	Slot 4 . . . . .	10
2.4.3	Slot 5 . . . . .	11
2.4.4	Slot 6 . . . . .	12
2.4.5	Slot 7 . . . . .	13
2.5	FID Slots . . . . .	14
2.5.1	Slot 0 . . . . .	14
2.5.2	Slot 1 . . . . .	15
2.5.3	Slot 2 . . . . .	16
<b>A</b>	<b>Summary</b>	<b>17</b>
A.1	Status . . . . .	17
A.2	Comments . . . . .	17

# 1 Front

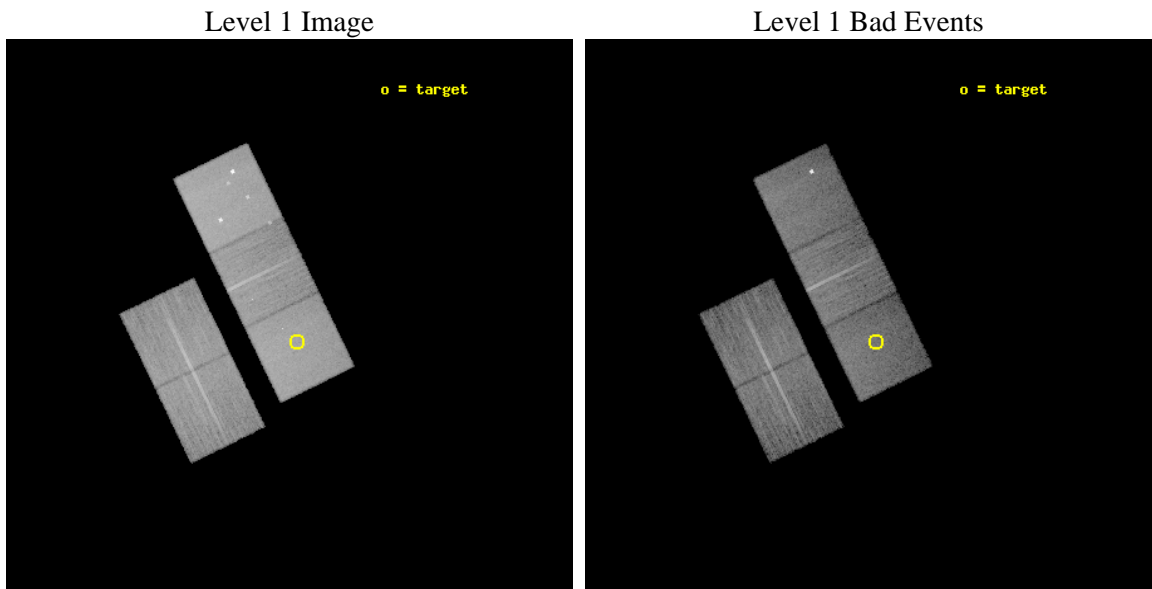
seq_num	801076	Sequence number
obs_id	13389	Observation id
title	Assembling a Large Sample of Fossil Groups	Proposal title
observer	Prof. Gordon Garmire	Principal investigator
object	SDSS J0907+1056	Source name
dtcycle	0	&#160
cycle	P	events from which exps? Prim/Second/Both
ra_targ	136.931667	Observer's specified target RA [deg]
dec_targ	10.947361	Observer's specified target Dec [deg]
ra_nom	136.94494456549	Nominal RA [deg]
dec_nom	10.979867179582	Nominal Dec [deg]
roll_nom	64.068617609809	Nominal Roll [deg]
revision	1	Processing version of data
ontime	20044.600154161	Sum of GTIs [s]
livetime	19782.702696527	Livetime [s]
ontime2	20044.600154161	Sum of GTIs [s]
ontime3	20044.600154161	Sum of GTIs [s]
ontime5	20044.600154161	Sum of GTIs [s]
ontime6	20041.45912385	Sum of GTIs [s]
ontime7	20044.600154161	Sum of GTIs [s]
l2events	200731	Number of level 2 events



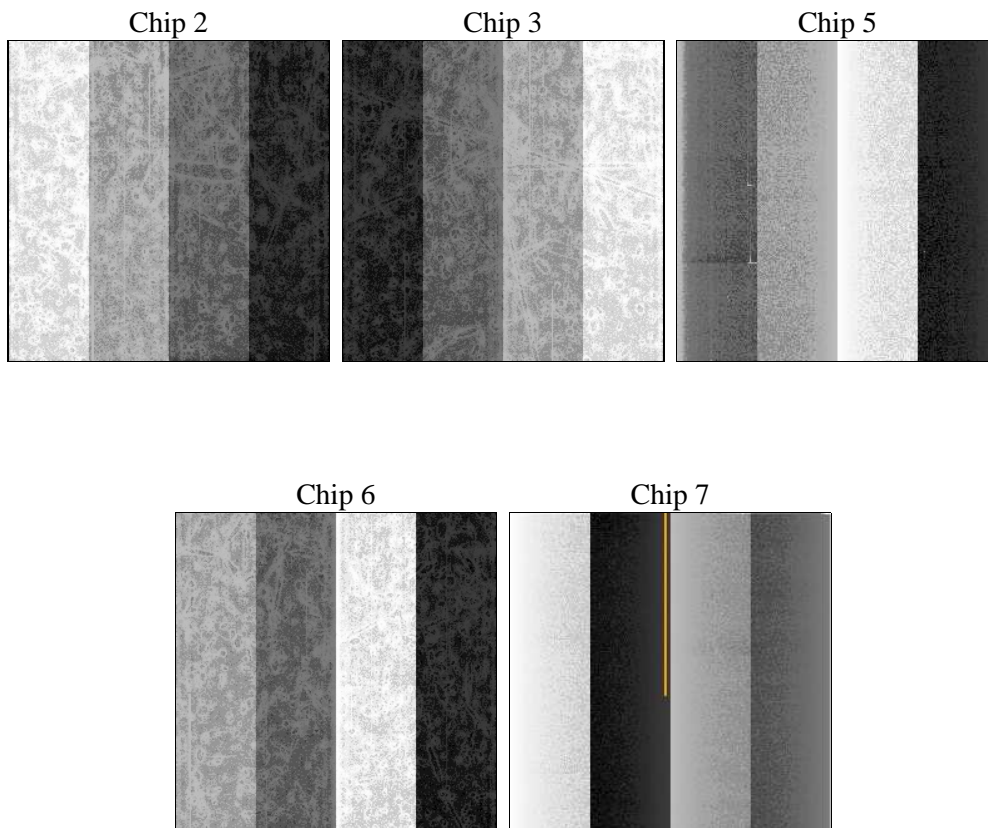
## 2 OBI

### 2.1 OBI

#### 2.1.1 Images



#### 2.1.2 Bias



### 2.1.3 Parameters

obi_num	0	Obi number	sched_exp_time	20000.000000	[s] Scheduled observation exposure time
ascdsver	8.4.3	Processing system revision	ontime	20044.600154161	Sum of GTIs [s]
caldbver	4.4.7	&#160	ontime2	20044.600154161	Sum of GTIs [s]
date	2012-01-07T20:29:07	Date and time of file creation	ontime3	20044.600154161	Sum of GTIs [s]
revision	1	Processing version of data	ontime5	20044.600154161	Sum of GTIs [s]
			ontime6	20041.45912385	Sum of GTIs [s]
			ontime7	20044.600154161	Sum of GTIs [s]
			l1events	753459	Number of level 1 events

### 2.1.4 Events

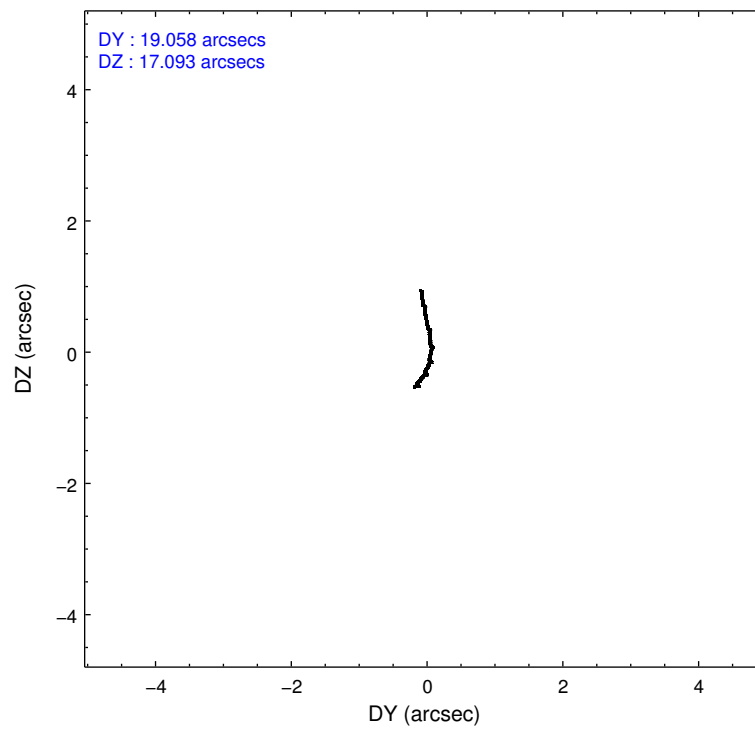
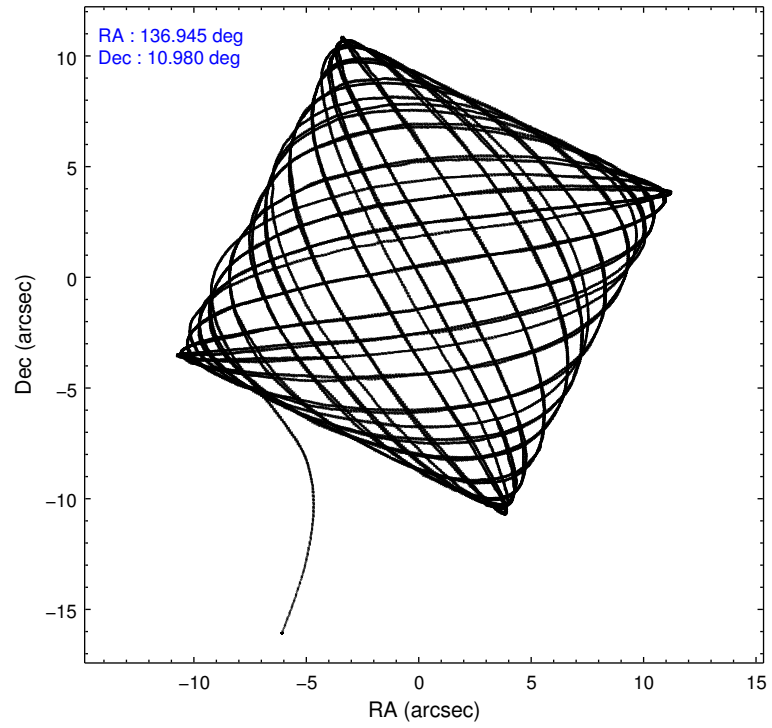
	ccd 2	ccd 3	ccd 5	ccd 6	ccd 7
level 1 events	127610	120435	210776	129941	164697
rejected events	112942	106943	108102	114993	91776
rejected %	88%	88%	51%	88%	55%

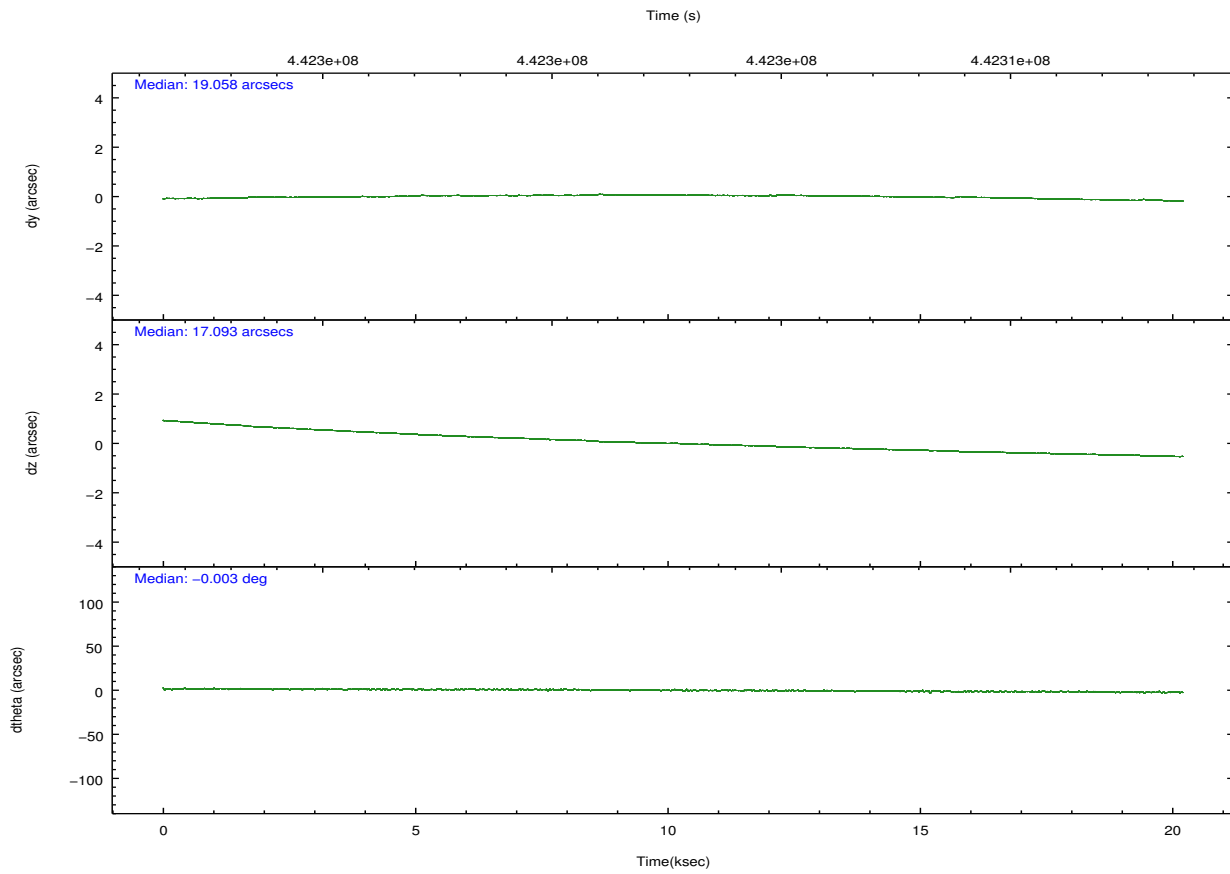
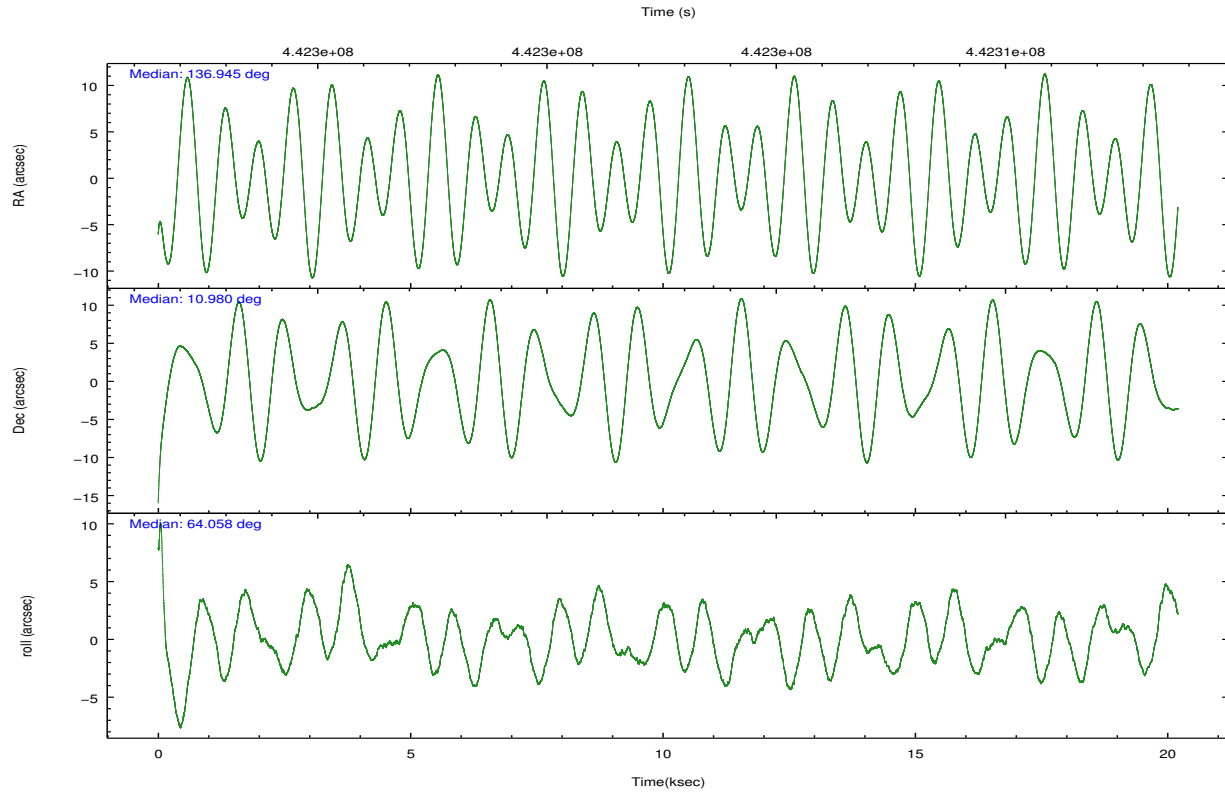
	ccd 2	ccd 3	ccd 5	ccd 6	ccd 7
grade 0 events	5574	4669	12380	5235	6511
	4%	3%	5%	4%	3%
grade 1 events	90	79	358	81	190
	0%	0%	0%	0%	0%
grade 2 events	3402	3071	30318	3367	14962
	2%	2%	14%	2%	9%
grade 3 events	1451	1441	3611	1600	6353
	1%	1%	1%	1%	3%
grade 4 events	1497	1477	3324	1531	6265
	1%	1%	1%	1%	3%
grade 5 events	4957	6265	15222	6315	17473
	3%	5%	7%	4%	10%
grade 6 events	2745	2838	53066	3218	38840
	2%	2%	25%	2%	23%
grade 7 events	107894	100595	92497	108594	74103
	84%	83%	43%	83%	44%

## 2.2 Compared Parameters

Parameter	Planned	Actual	Parameter	Planned	Actual
Instrument	ACIS	ACIS	Obspar format version number	7	7
Detector	ACIS-23567	ACIS-23567	Obspar file type	PREDICTED	ACTUAL
Grating	NONE	NONE	Obspar update status	NONE	UPDATED
Data mode	VFAINT	VFAINT	CCD I0 on	N	N
Observation mode	POINTING	POINTING	CCD I1 on	N	N
[deg] Pointing RA	136.947334	136.9449445654938	CCD I2 on	O1	Y
[deg] Pointing Dec	10.952634	10.97986717958167	CCD I3 on	O2	Y
[deg] Pointing Roll	63.911534	64.06861760980928	CCD S0 on	N	N
[mm] SIM focus pos	-0.684267	-0.6828225247311905	CCD S1 on	Y	Y
[mm] SIM defocus	0	0.001444936568705701	CCD S2 on	Y	Y
[mm] SIM translation stage pos	-190.132523	-190.145094680475	CCD S3 on	Y	Y
[mm] SIM translation stage offset	0	0.01257209746719923	CCD S4 on	N	N
[s] Observation start time (MET)	442292746.184000	442291797.43625	CCD S5 on	N	N
Observation start date	2012-01-07T03:04:40	2012-01-07T02:49:57	Number of optional ACIS chips dropped	0	0
[s] Observation end time (MET)	442312746.184000	442314264.92494	On-chip summing requested	N	N
Observation end date	2012-01-07T08:38:00	2012-01-07T09:04:24	Subarray requested	NONE	NONE
Read mode	TIMED	TIMED	Alternating exposures requested	N	N
			[s] Primary exposure time	0.000000	3.1

## 2.3 Aspect



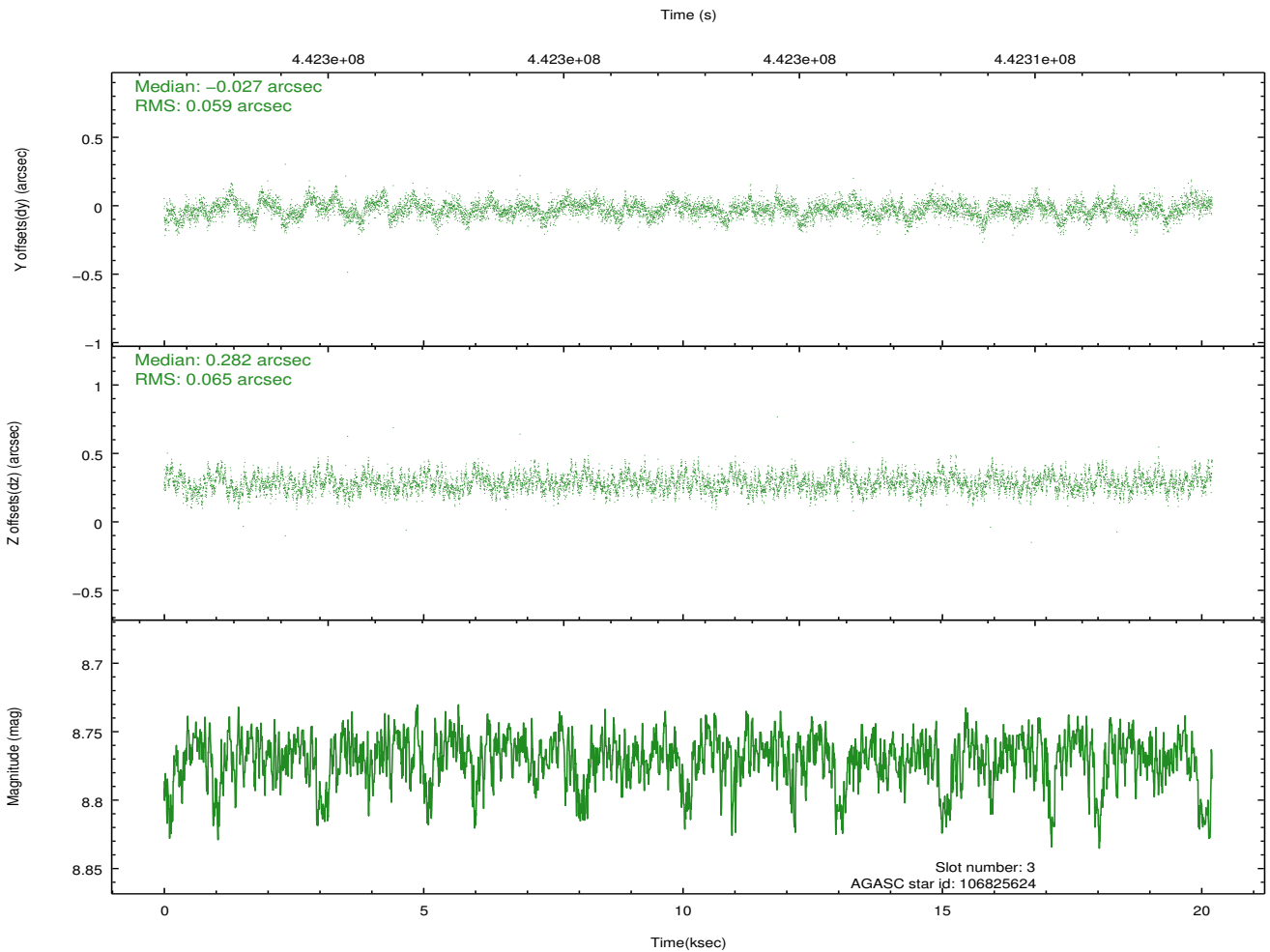
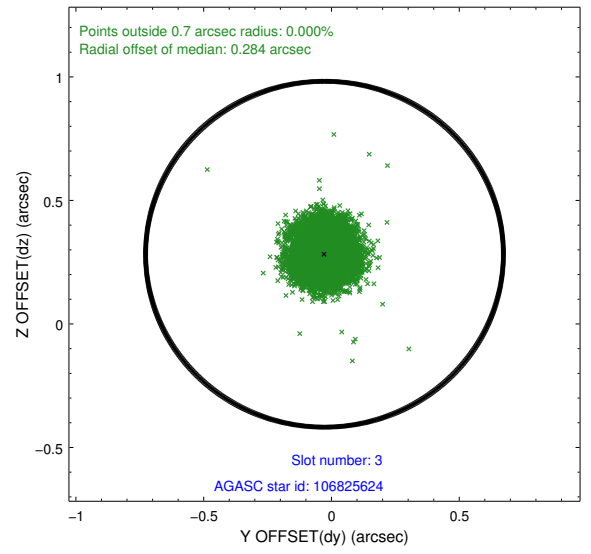
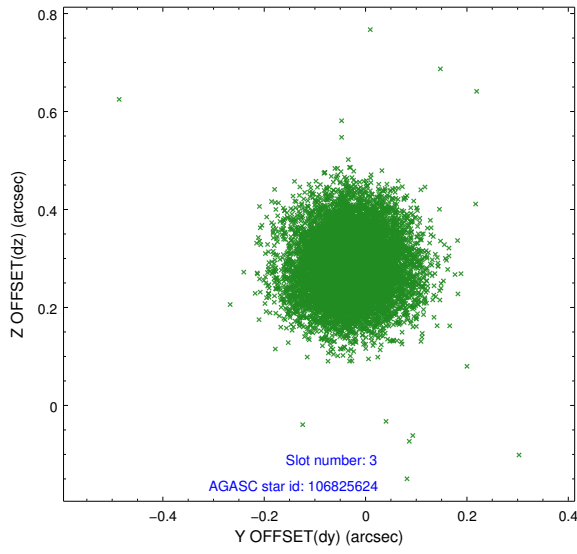


### Slot Statistics

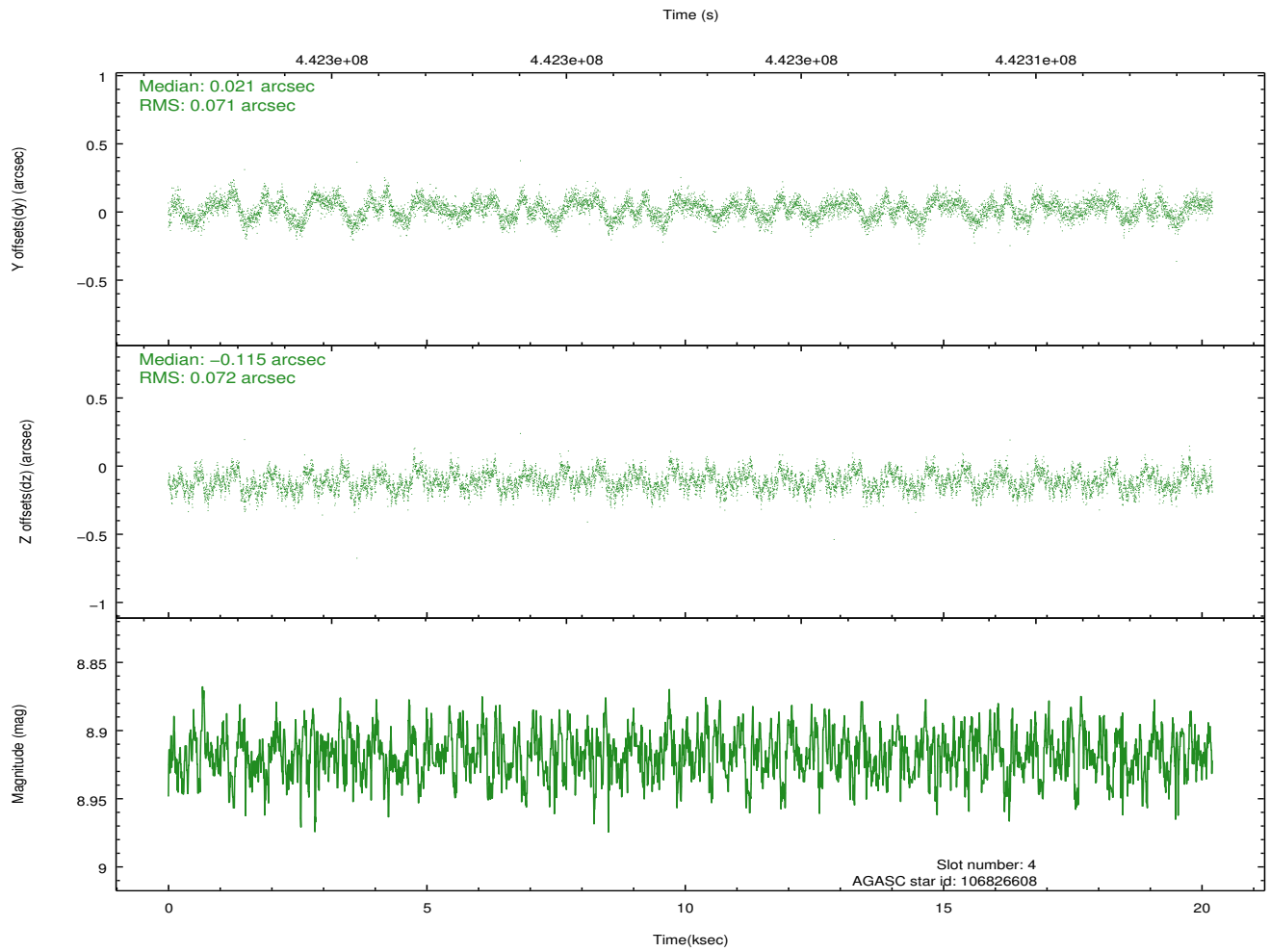
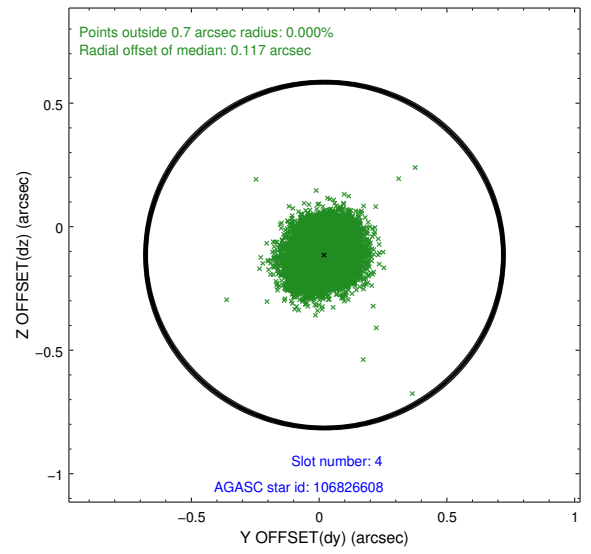
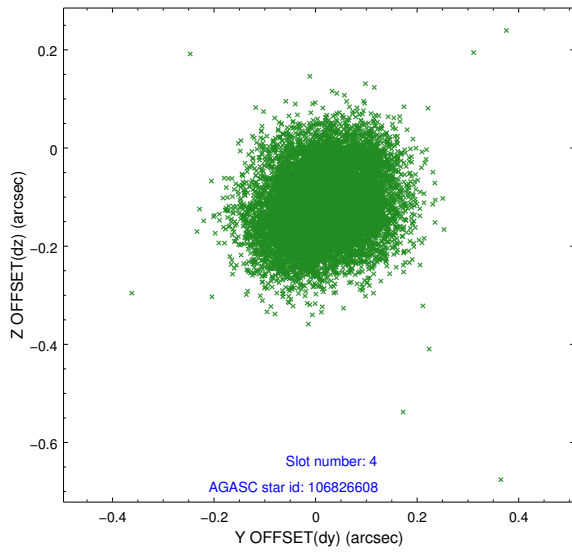
slot	status	id	mag	n_pts	med_dy	med_dz	dr1	dr2	ra	dec	mean_y	mean_z
0	FID	ACIS-S-2	6.95	4929	-0.108	-0.040	0.015	0.022	0.000000	0.000000	-772.27	-1738.50
1	FID	ACIS-S-4	7.03	4929	0.284	0.063	0.008	0.013	0.000000	0.000000	2141.35	169.82
2	FID	ACIS-S-5	7.06	4928	-0.207	-0.014	0.013	0.020	0.000000	0.000000	-1824.94	163.72
3	GUIDE	106825624	8.77	9844	-0.027	0.282	0.092	0.150	137.293195	10.821701	114.92	-1307.90
4	GUIDE	106826608	8.92	9851	0.021	-0.115	0.109	0.168	136.887374	11.444072	1496.18	968.02
5	GUIDE	106827648	10.11	9840	-0.067	0.212	0.232	0.363	137.455562	11.141591	1402.48	-1311.93
6	GUIDE	106836656	8.99	9852	-0.074	-0.276	0.101	0.164	136.362622	11.258022	81.17	2338.06
7	GUIDE	106835456	7.33	9857	0.145	-0.115	0.101	0.176	136.149337	10.850169	-1568.99	2373.48

## 2.4 Star Slots

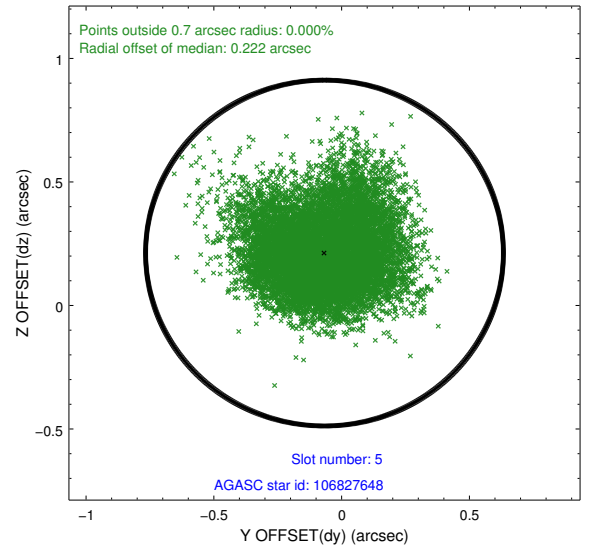
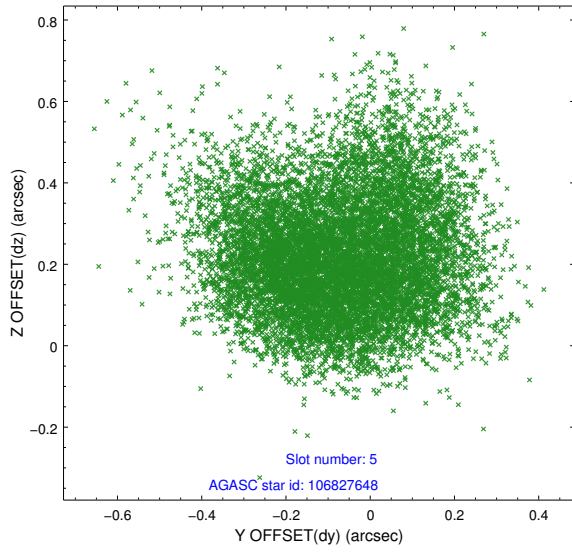
### 2.4.1 Slot 3



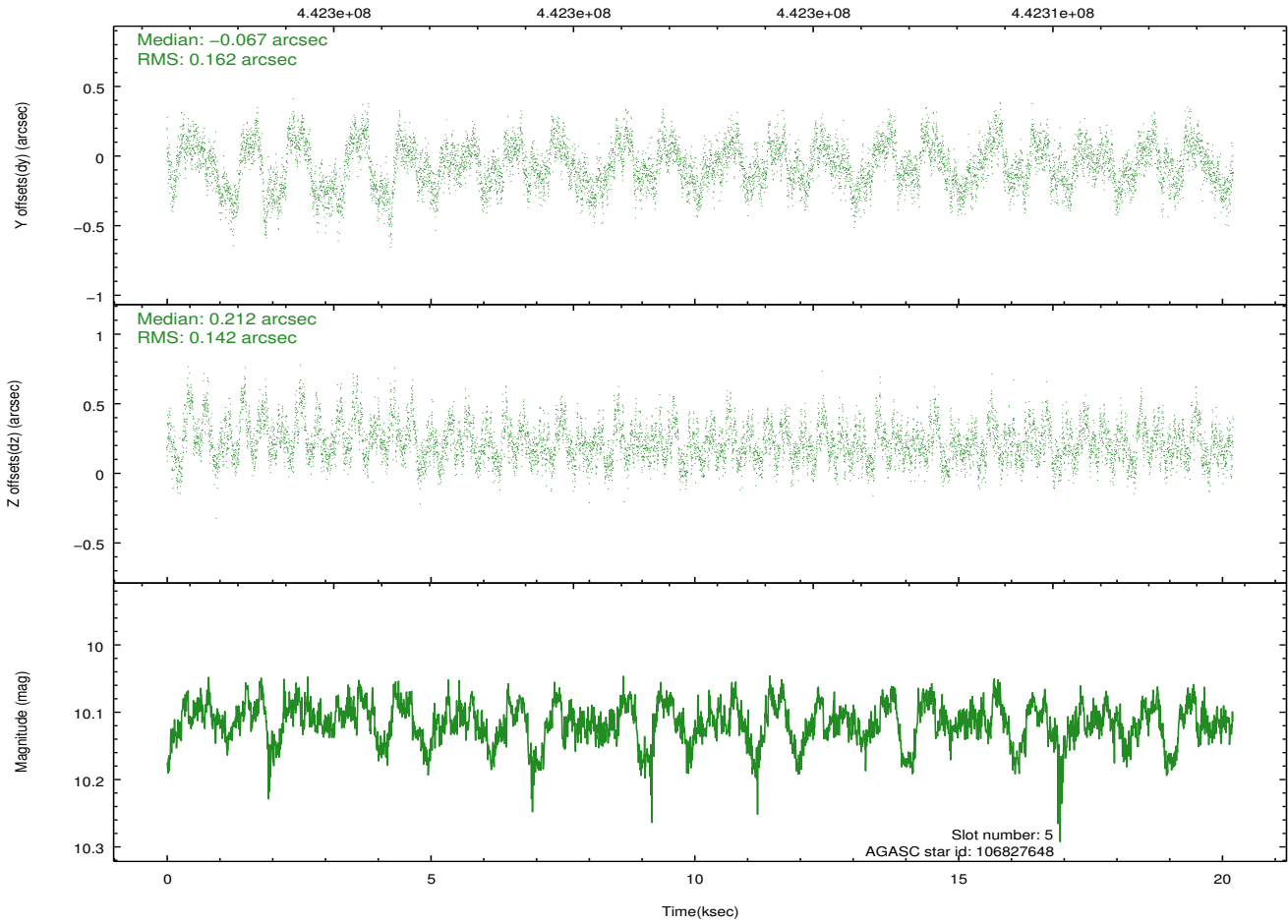
### 2.4.2 Slot 4



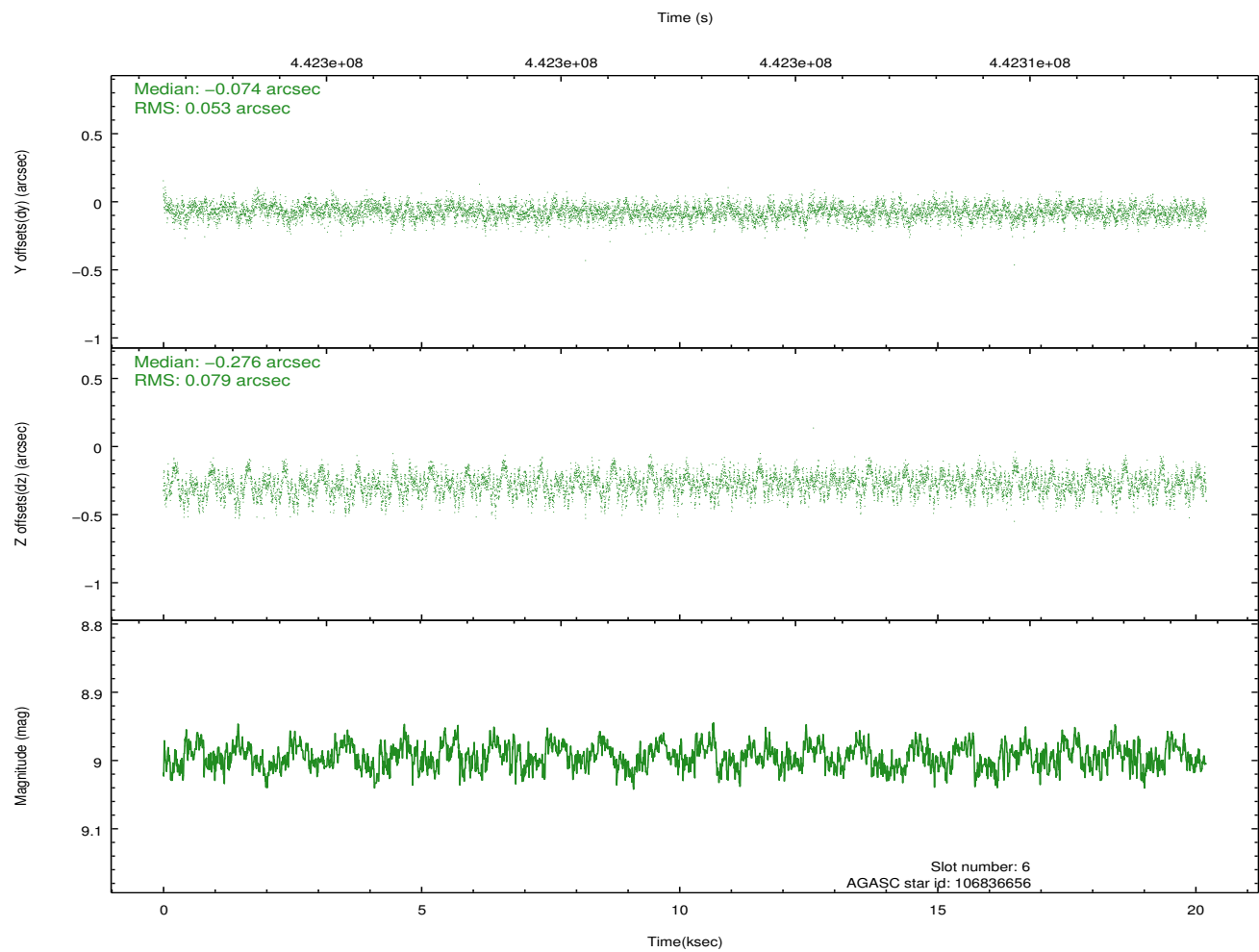
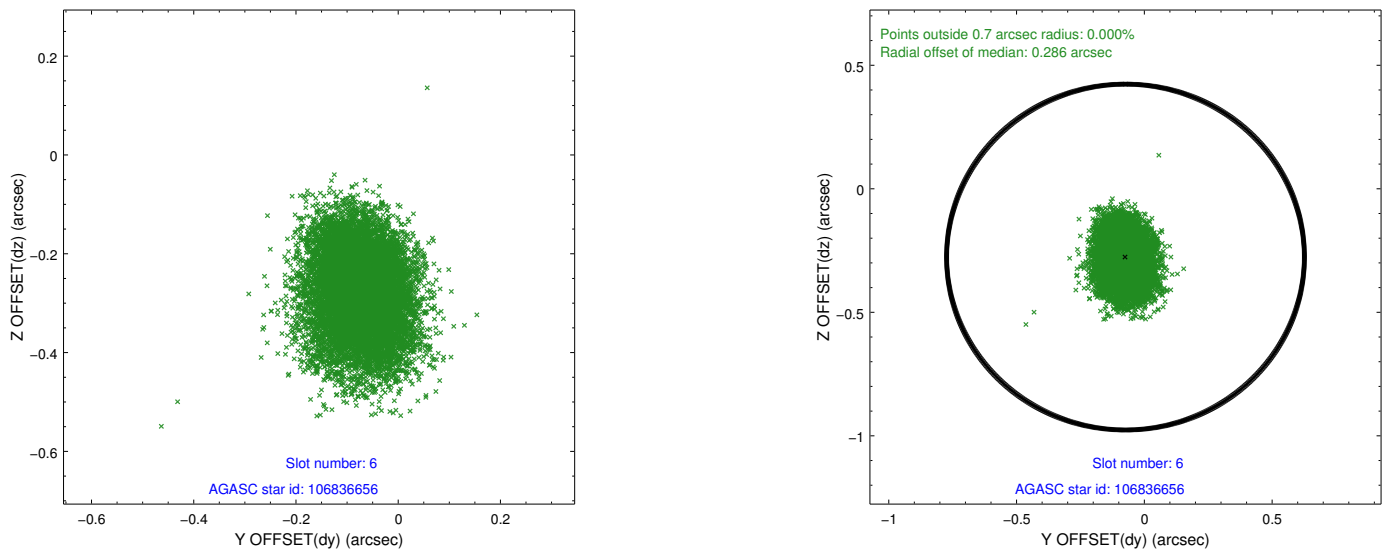
### 2.4.3 Slot 5



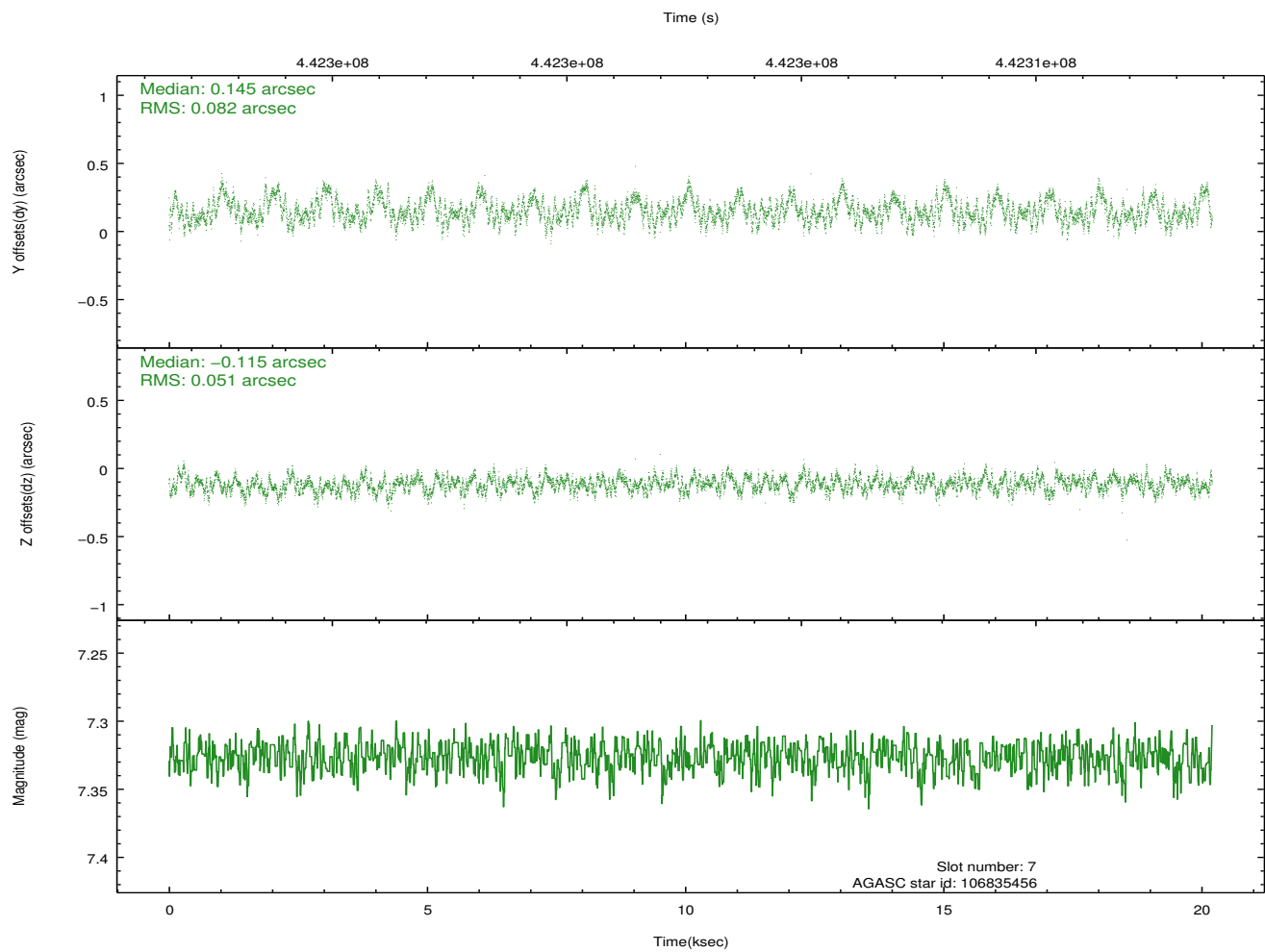
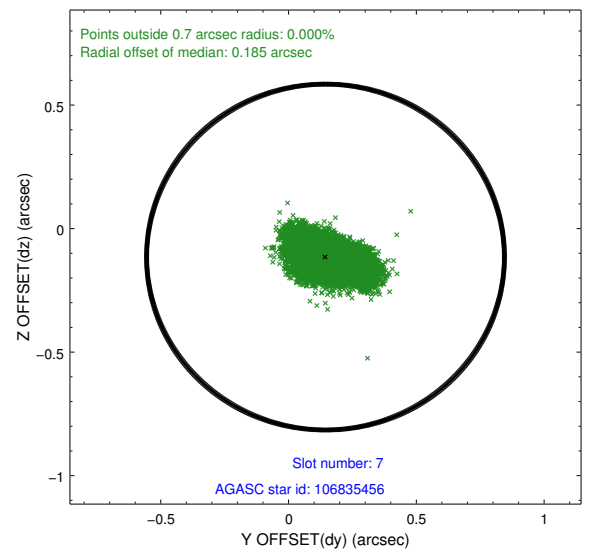
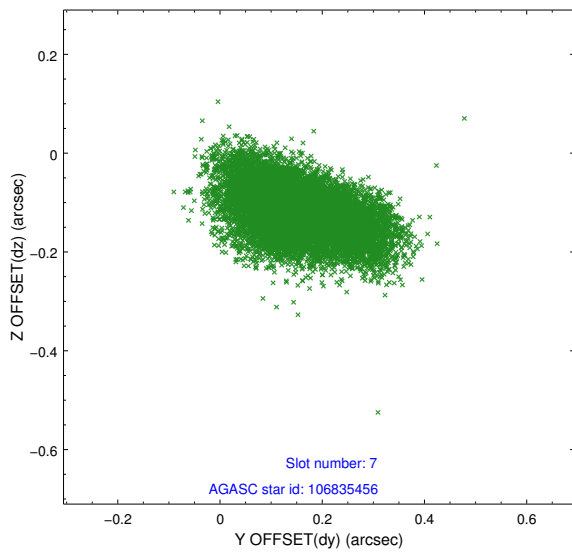
Time (s)



## 2.4.4 Slot 6

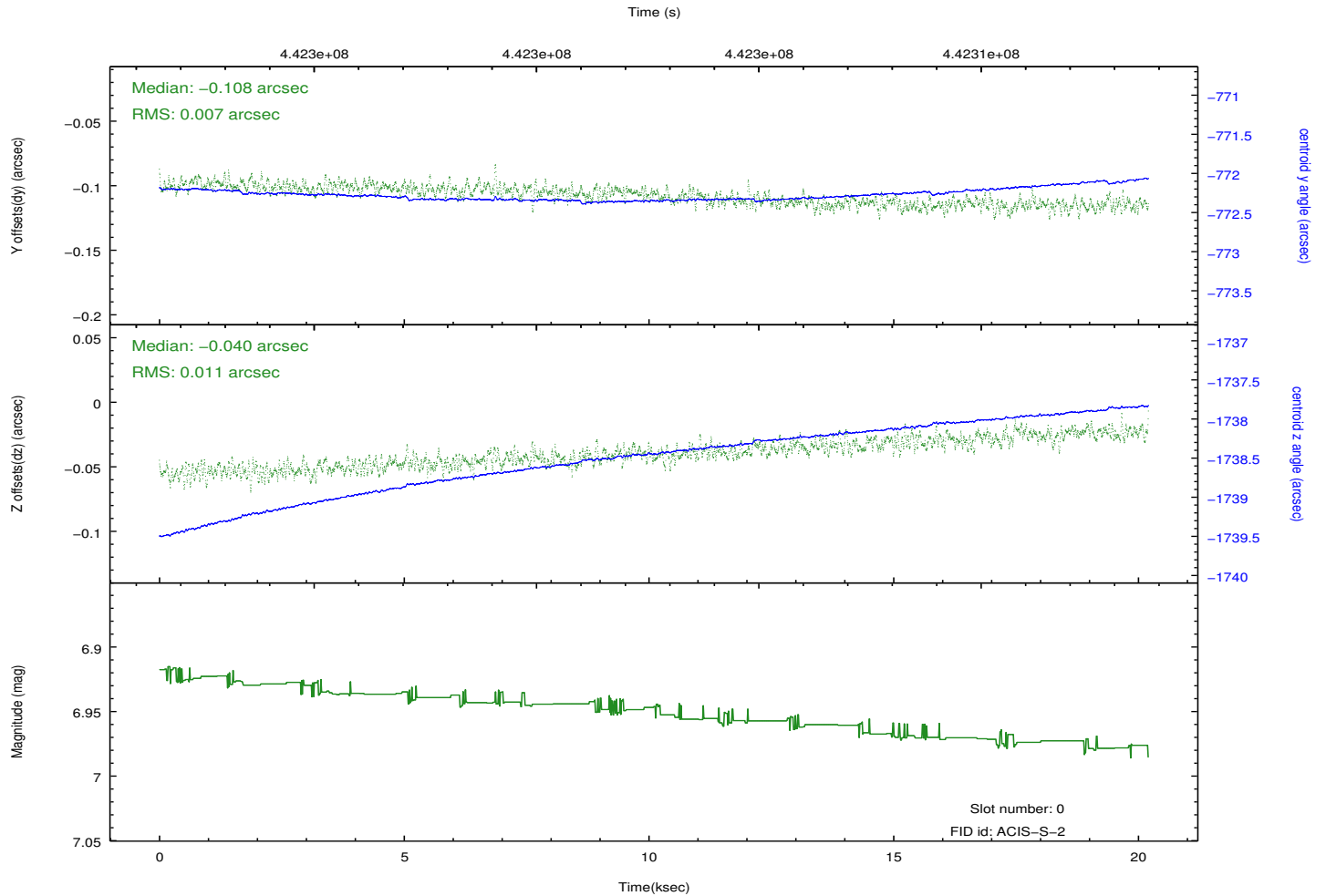
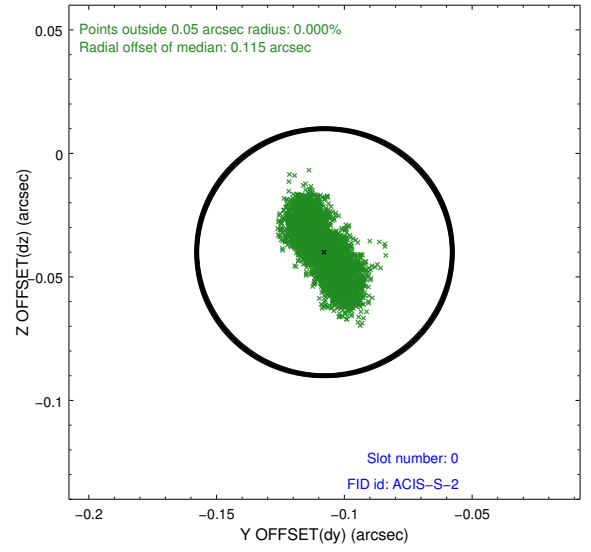
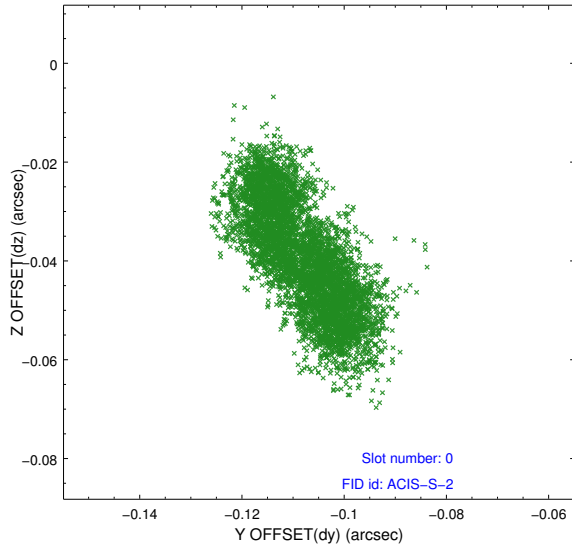


## 2.4.5 Slot 7

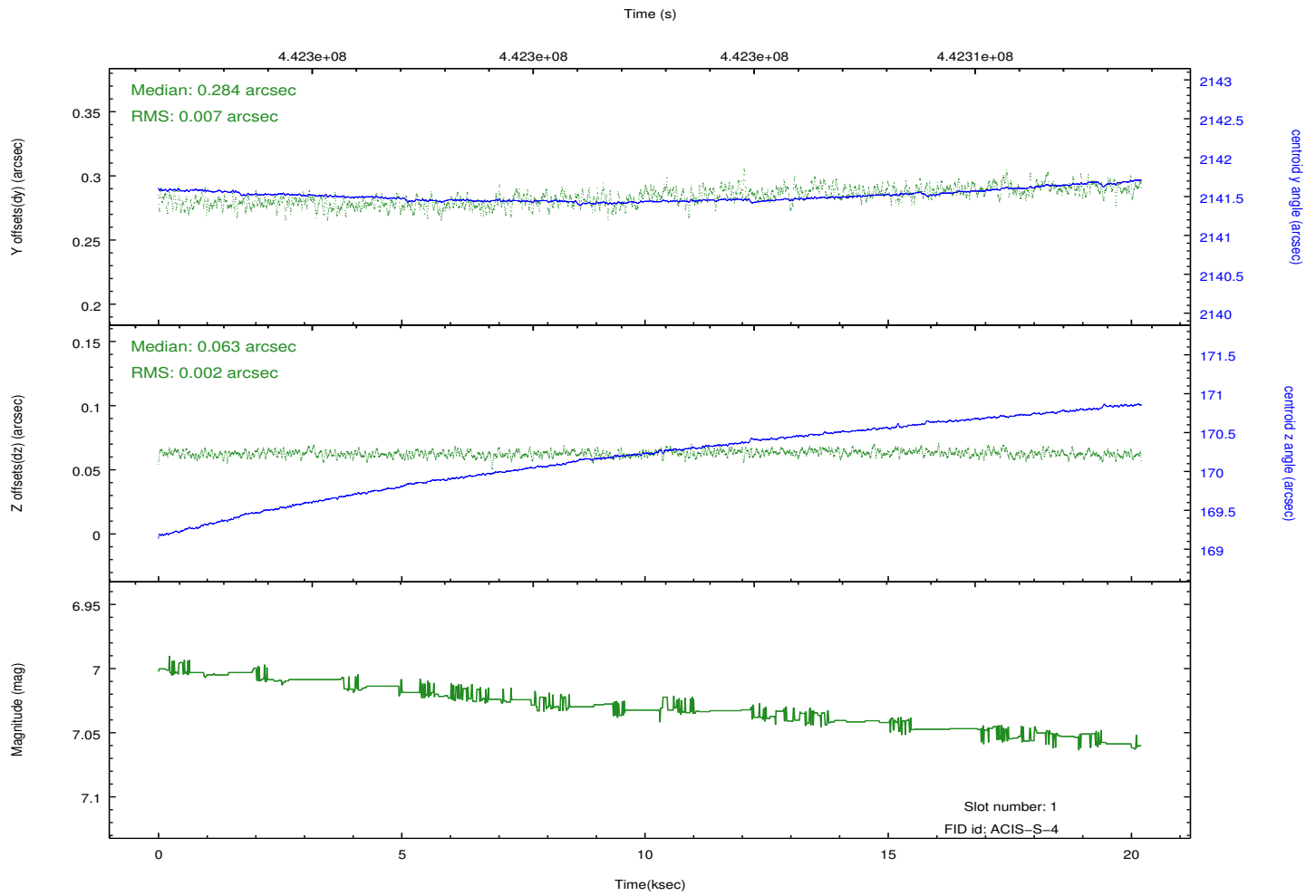
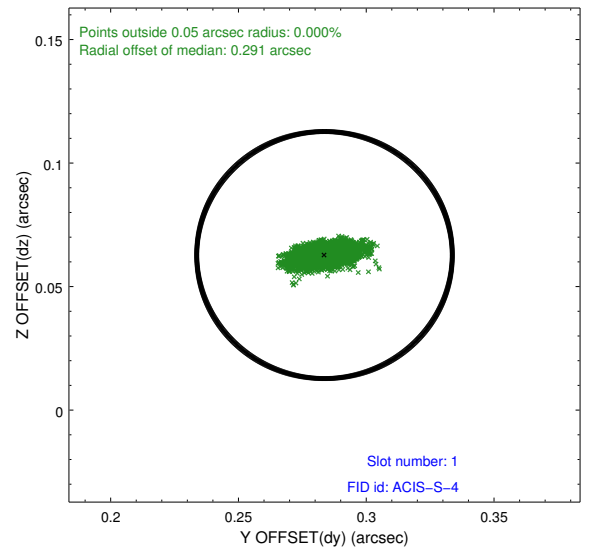
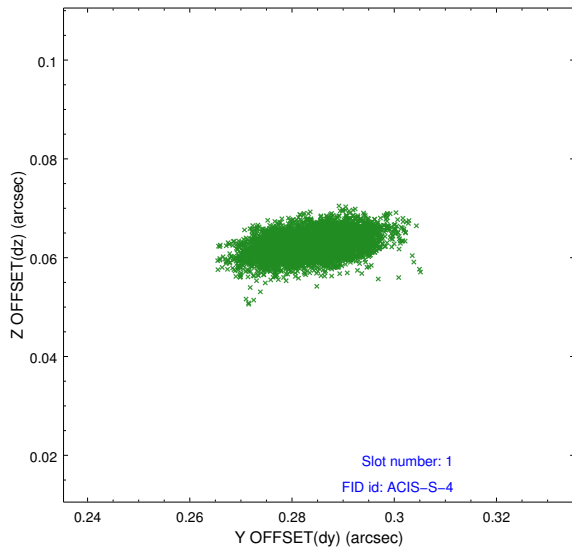


## 2.5 FID Slots

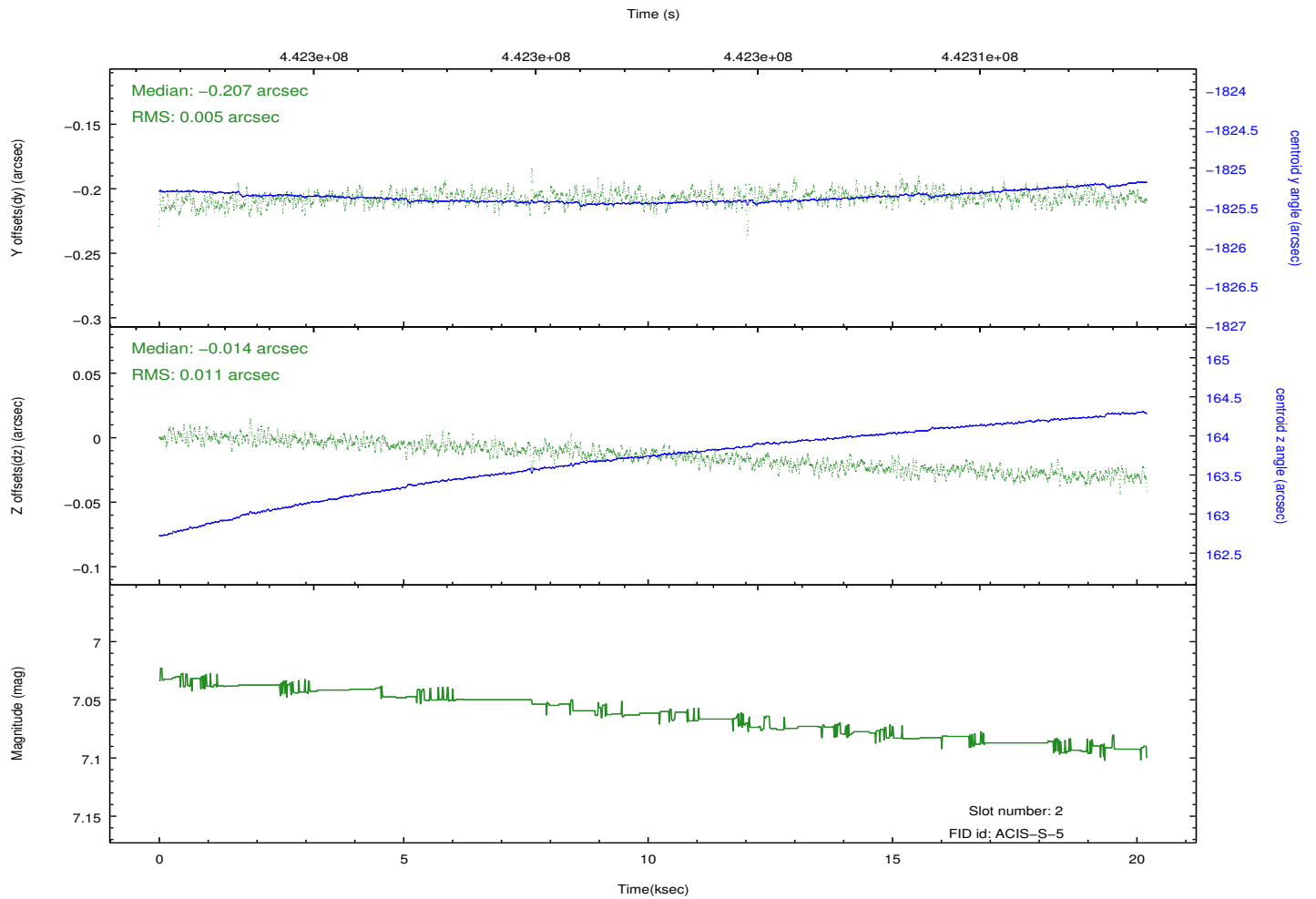
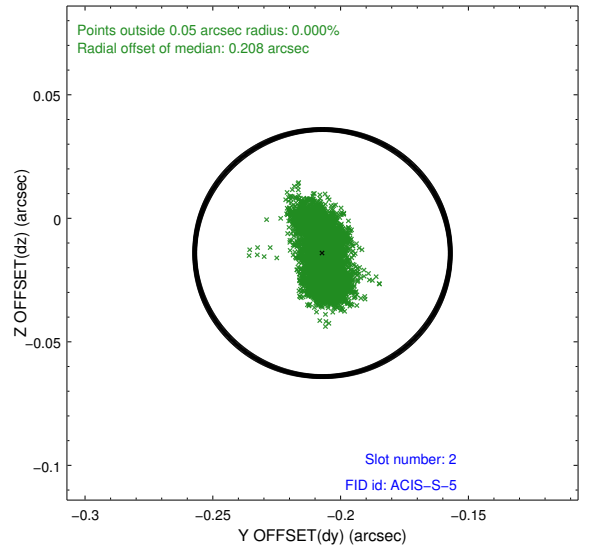
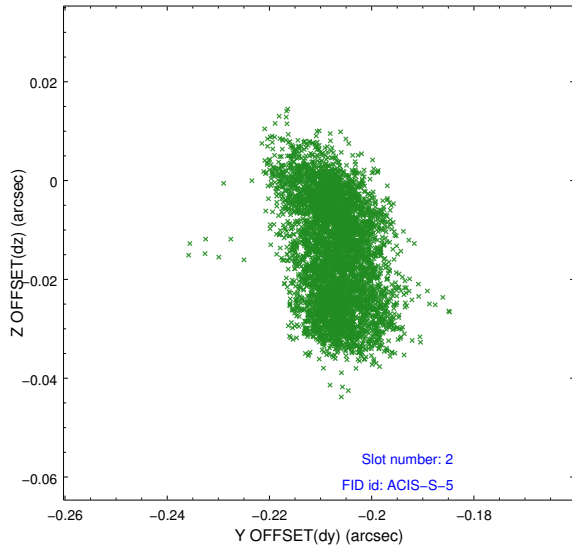
### 2.5.1 Slot 0



## 2.5.2 Slot 1



### 2.5.3 Slot 2



## A Summary

### A.1 Status

V&V Scientist	Beth Sundheim
V&V Date (YYYY-MM-DD)	2012.01.08
V&V Edition	1
V&V Disposition and Status	OK
V&V Charge Time	20.044600154161

### A.2 Comments