

# V&V Reference Report

## L2 ASCDS Version : 8.4.3

Observation 13399 - L2 Version 2  
Chandra X-Ray Center

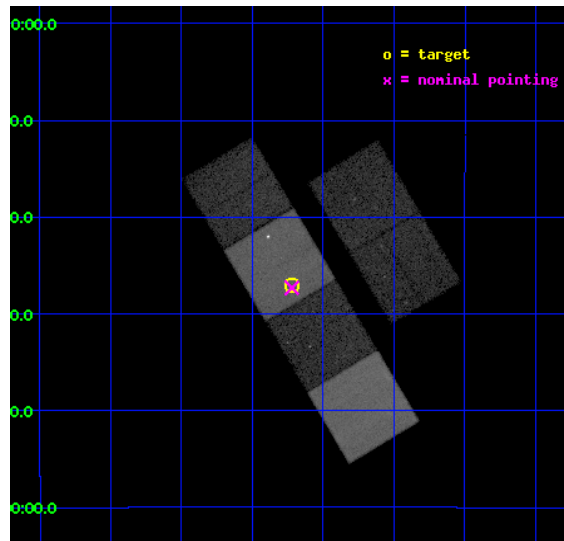
L2 Processing Date : Feb 13 2012

## Contents

<b>1</b>	<b>Front</b>	<b>2</b>
<b>2</b>	<b>OBI</b>	<b>3</b>
2.1	OBI . . . . .	3
2.1.1	Images . . . . .	3
2.1.2	Bias . . . . .	3
2.1.3	Parameters . . . . .	4
2.1.4	Events . . . . .	4
2.2	Compared Parameters . . . . .	5
2.3	Aspect . . . . .	6
2.4	Star Slots . . . . .	9
2.4.1	Slot 3 . . . . .	9
2.4.2	Slot 4 . . . . .	10
2.4.3	Slot 5 . . . . .	11
2.4.4	Slot 6 . . . . .	12
2.4.5	Slot 7 . . . . .	13
2.5	FID Slots . . . . .	14
2.5.1	Slot 0 . . . . .	14
2.5.2	Slot 1 . . . . .	15
2.5.3	Slot 2 . . . . .	16
<b>A</b>	<b>Summary</b>	<b>17</b>
A.1	Status . . . . .	17
A.2	Comments . . . . .	17

# 1 Front

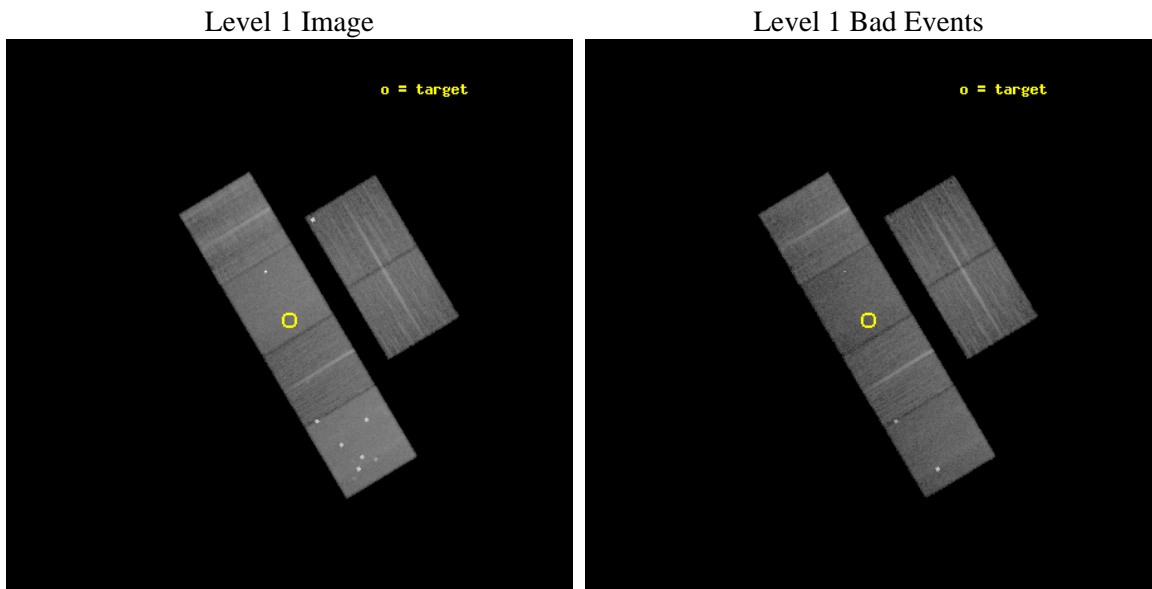
seq_num	801086	Sequence number
obs_id	13399	Observation id
title	Exploring the Physical Limits of Deep Galaxy cluster Surveys in X-rays - The case of XMMU J1532.2-0837 at z=1.36	Proposal title
observer	Dr. Peter Predehl	Principal investigator
object	XMMU J1532.2-0837	Source name
dtcycle	0	&#160
cycle	P	events from which exps? Prim/Second/Both
ra_targ	233.055	Observer's specified target RA [deg]
dec_targ	-8.617056	Observer's specified target Dec [deg]
ra_nom	233.05507488488	Nominal RA [deg]
dec_nom	-8.6218907728604	Nominal Dec [deg]
roll_nom	239.15664060819	Nominal Roll [deg]
revision	2	Processing version of data
ontime	25711.999904275	Sum of GTIs [s]
livetime	25386.419079579	Livetime [s]
ontime2	25708.758853972	Sum of GTIs [s]
ontime3	25708.758853972	Sum of GTIs [s]
ontime5	25711.999904275	Sum of GTIs [s]
ontime6	25711.999904275	Sum of GTIs [s]
ontime7	25711.999904275	Sum of GTIs [s]
ontime8	25711.999904275	Sum of GTIs [s]
l2events	268605	Number of level 2 events



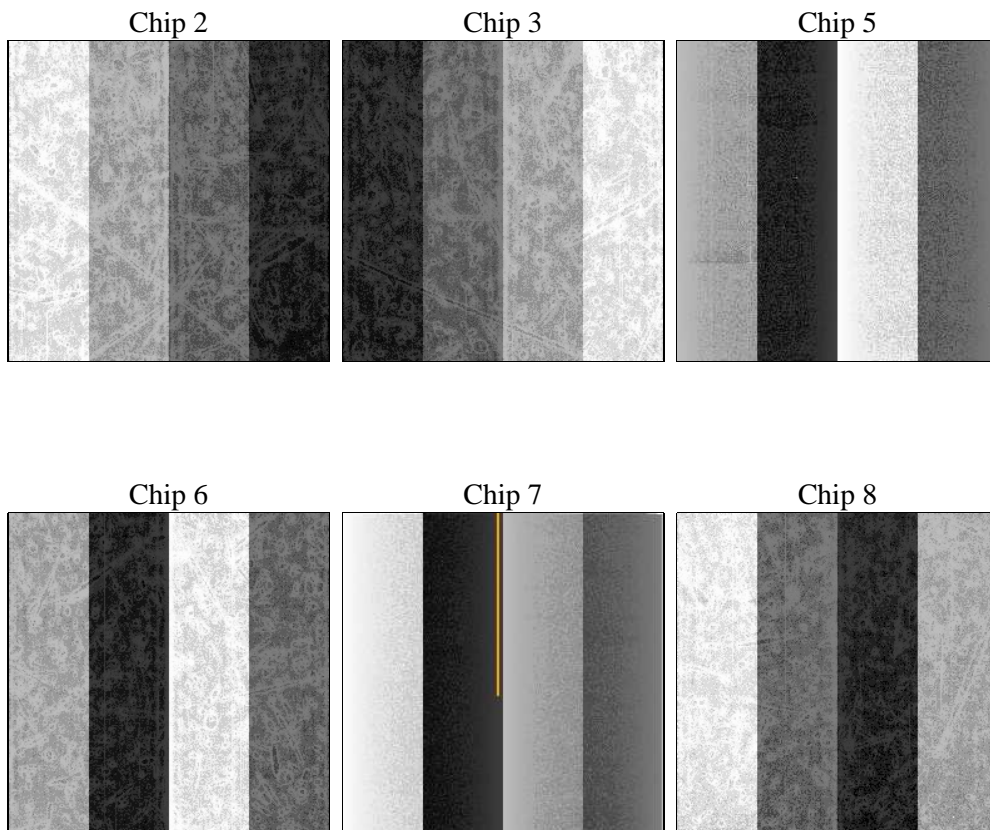
## 2 OBI

### 2.1 OBI

#### 2.1.1 Images



#### 2.1.2 Bias



### 2.1.3 Parameters

obi_num	0	Obi number	sched_exp_time	25661.000000	[s] Scheduled observation exposure time
ascdsver	8.4.3	Processing system revision	ontime	25711.999904275	Sum of GTIs [s]
caldbver	4.4.7	&#160	ontime2	25708.758853972	Sum of GTIs [s]
date	2012-02-13T12:19:09	Date and time of file creation	ontime3	25708.758853972	Sum of GTIs [s]
revision	2	Processing version of data	ontime5	25711.999904275	Sum of GTIs [s]
			ontime6	25711.999904275	Sum of GTIs [s]
			ontime7	25711.999904275	Sum of GTIs [s]
			ontime8	25711.999904275	Sum of GTIs [s]
			l1events	1148835	Number of level 1 events

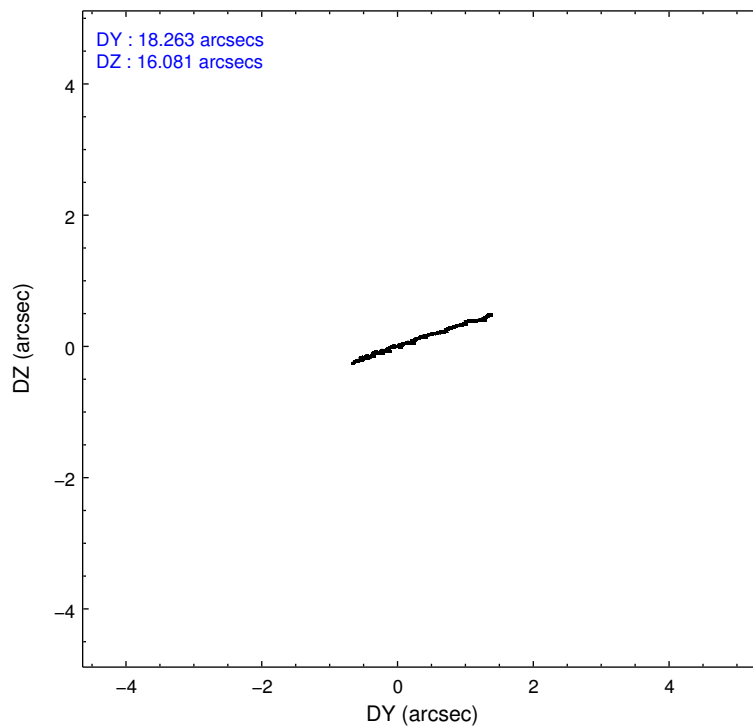
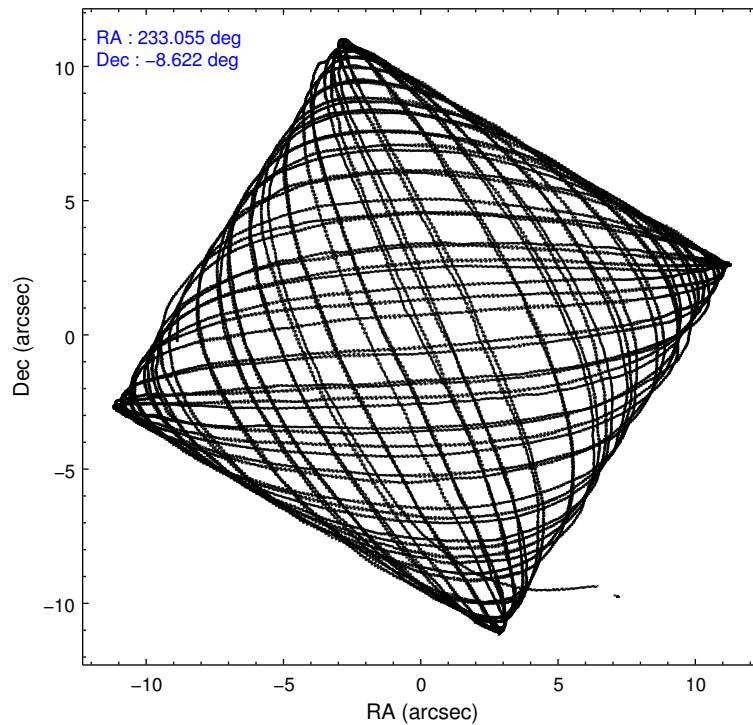
### 2.1.4 Events

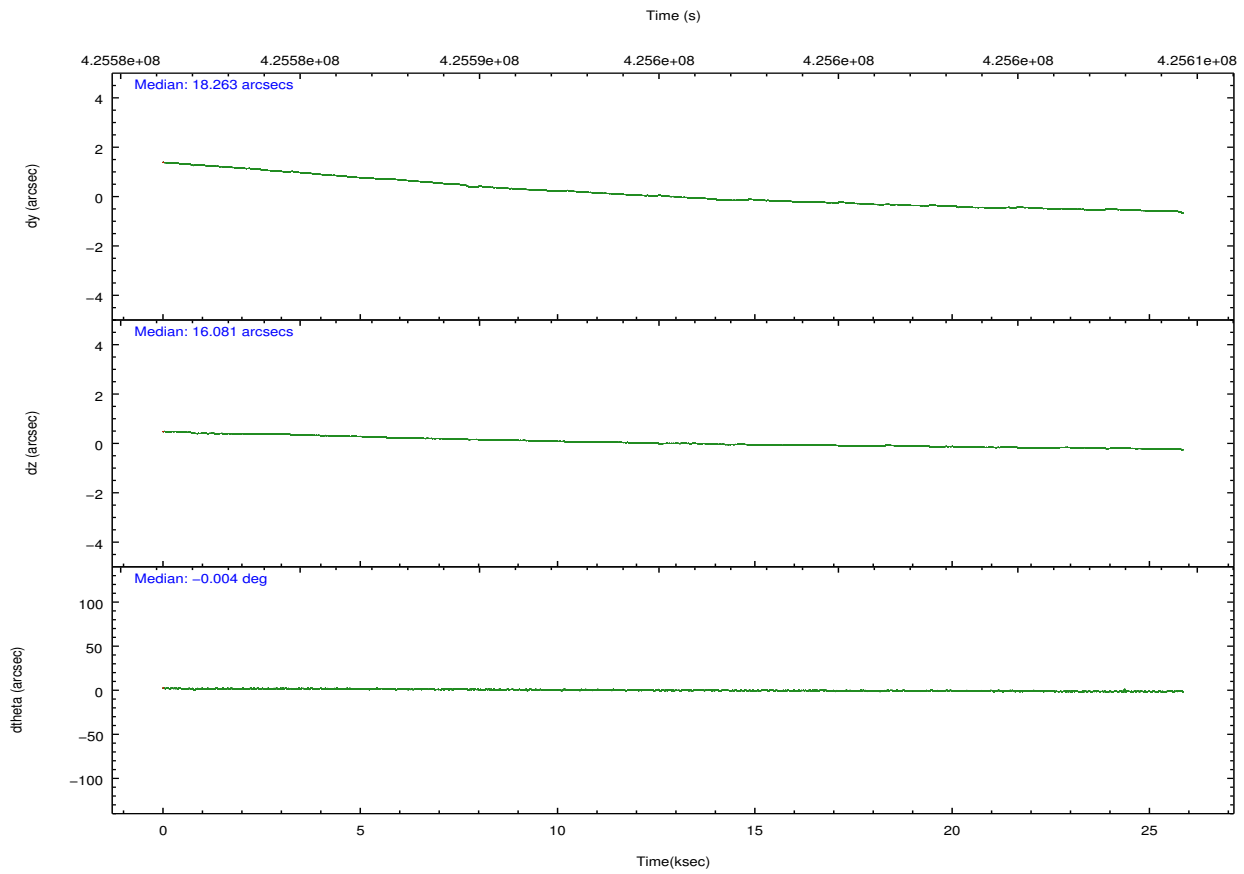
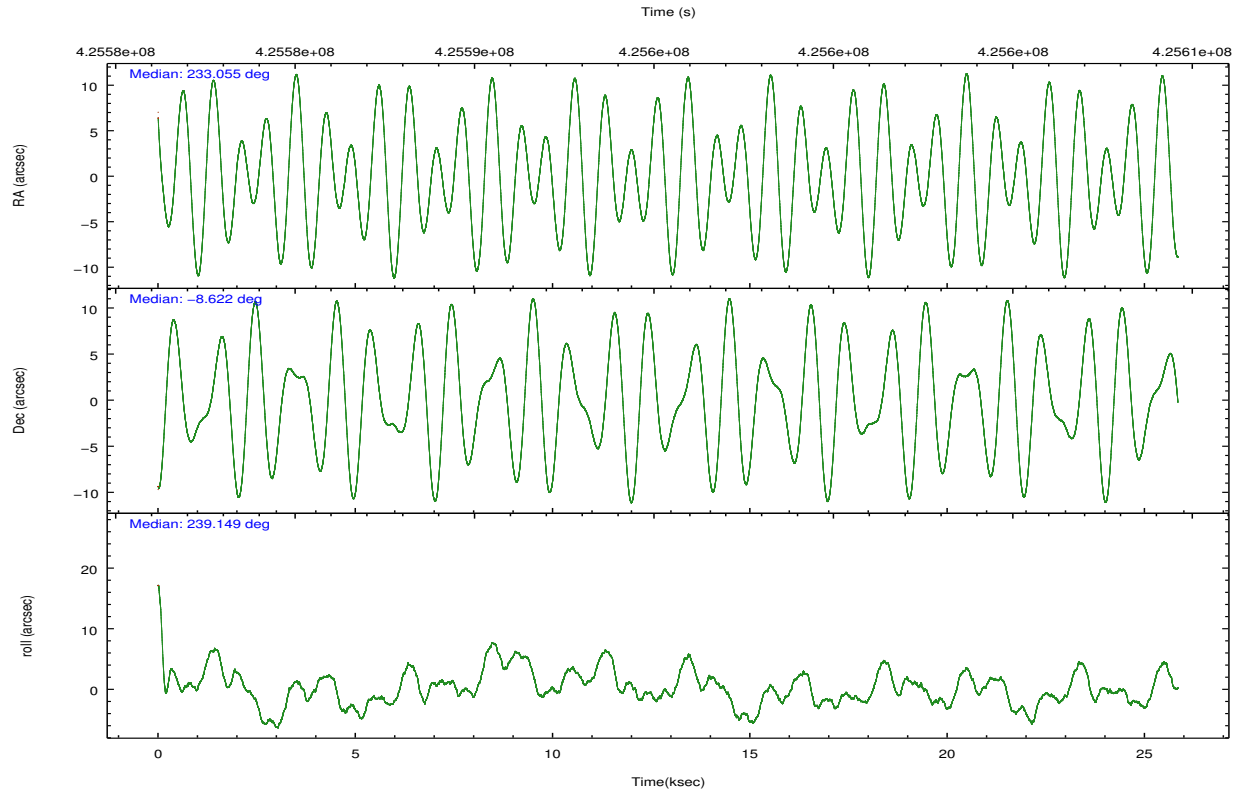
	ccd 2	ccd 3	ccd 5	ccd 6	ccd 7	ccd 8		ccd 2	ccd 3	ccd 5	ccd 6	ccd 7	ccd 8
level 1 events	160240	156050	273283	153474	208609	197179	grade 0 events	6153	5560	29119	6674	11846	13909
rejected events	143331	130259	131712	135060	109735	147389		3%	3%	10%	4%	5%	7%
rejected %	89%	83%	48%	88%	52%	74%	grade 1 events	110	89	967	69	359	147
								0%	0%	0%	0%	0%	0%
							grade 2 events	3967	13422	37553	4008	20863	11798
								2%	8%	13%	2%	10%	5%
							grade 3 events	1732	1774	4609	1817	8975	5407
								1%	1%	1%	1%	4%	2%
							grade 4 events	1757	1734	4407	1888	8655	5094
								1%	1%	1%	1%	4%	2%
							grade 5 events	6320	7251	19758	7406	20503	10655
								3%	4%	7%	4%	9%	5%
							grade 6 events	3307	3310	65916	4030	48556	13586
								2%	2%	24%	2%	23%	6%
							grade 7 events	136894	122910	110954	127582	88852	136583
								85%	78%	40%	83%	42%	69%

## 2.2 Compared Parameters

Parameter	Planned	Actual	Parameter	Planned	Actual
Instrument	ACIS	ACIS	Obspar format version number	7	7
Detector	ACIS-235678	ACIS-235678	Obspar file type	PREDICTED	ACTUAL
Grating	NONE	NONE	Obspar update status	NONE	UPDATED
Data mode	VFAINT	VFAINT	CCD I0 on	N	N
Observation mode	POINTING	POINTING	CCD I1 on	N	N
[deg] Pointing RA	233.055105	233.0550748848833	CCD I2 on	Y	Y
[deg] Pointing Dec	-8.594566	-8.621890772860381	CCD I3 on	Y	Y
[deg] Pointing Roll	239.000013	239.1566406081851	CCD S0 on	N	N
[mm] SIM focus pos	-0.684267	-0.6828225247311905	CCD S1 on	O1	Y
[mm] SIM defocus	0	0.001444936568705701	CCD S2 on	Y	Y
[mm] SIM translation stage pos	-190.132523	-190.1425803651734	CCD S3 on	Y	Y
[mm] SIM translation stage offset	0	0.01005778216563158	CCD S4 on	O2	Y
[s] Observation start time (MET)	425582653.184000	425581534.76867	CCD S5 on	N	N
Observation start date	2011-06-27T17:23:07	2011-06-27T17:05:34	Number of optional ACIS chips dropped	0	0
[s] Observation end time (MET)	425608314.184000	425609111.37011	On-chip summing requested	N	N
Observation end date	2011-06-28T00:30:48	2011-06-28T00:45:11	Subarray requested	NONE	NONE
Read mode	TIMED	TIMED	Alternating exposures requested	N	N
			[s] Primary exposure time	0.000000	3.2

## 2.3 Aspect



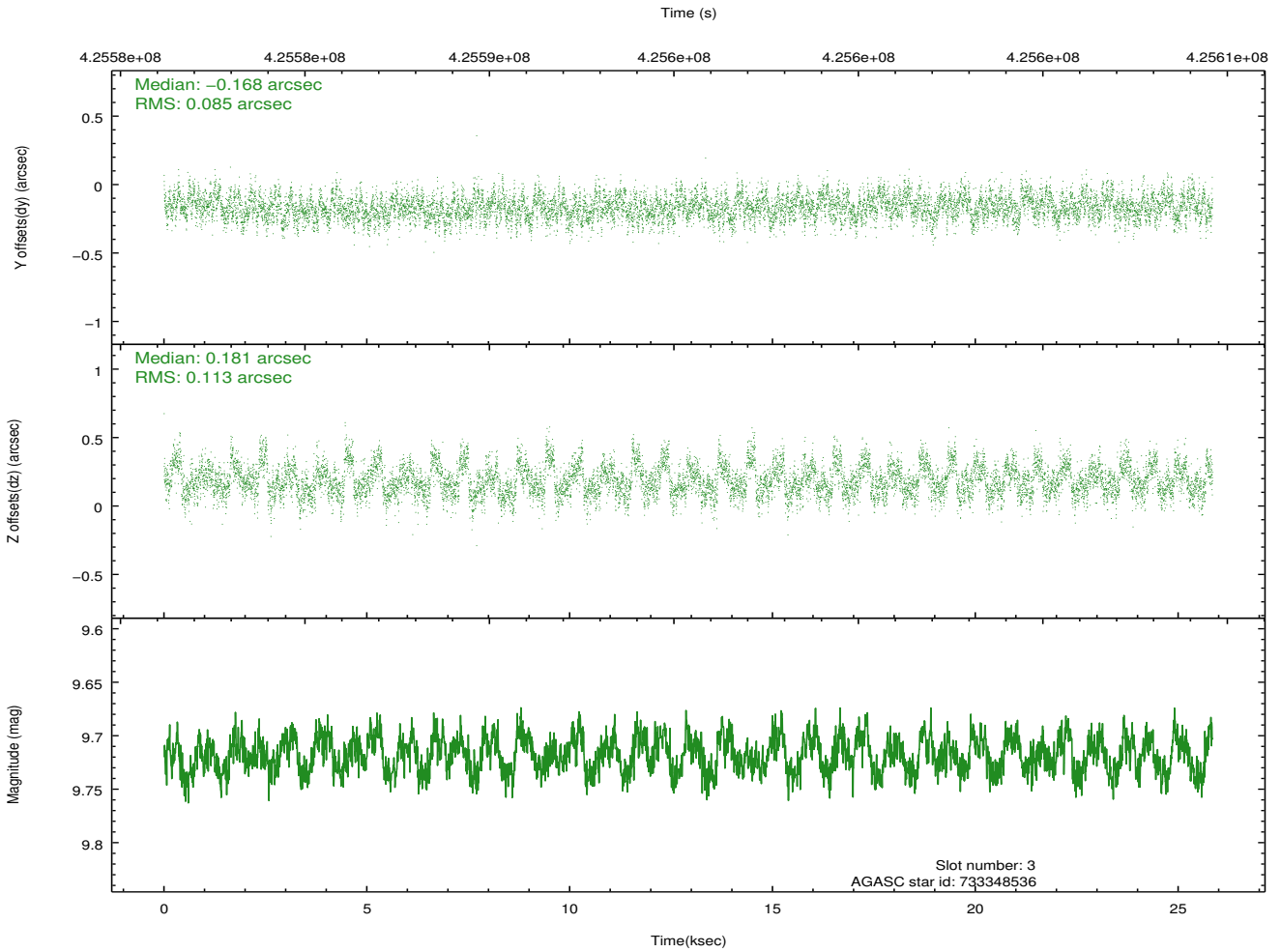
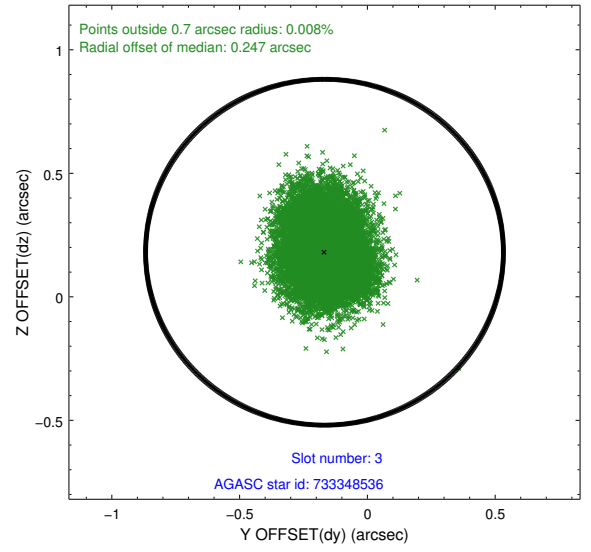
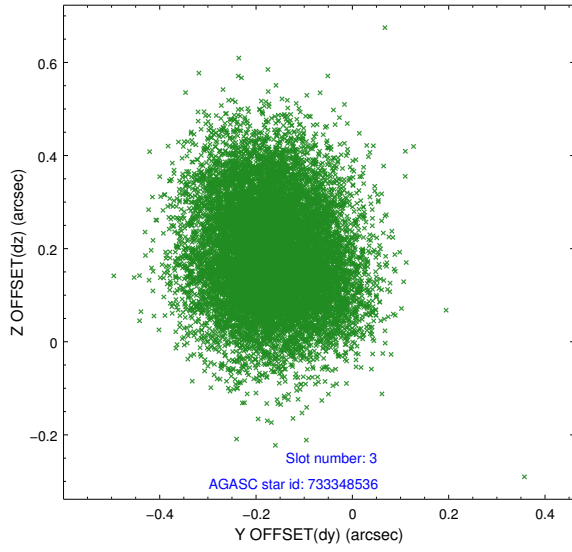


### Slot Statistics

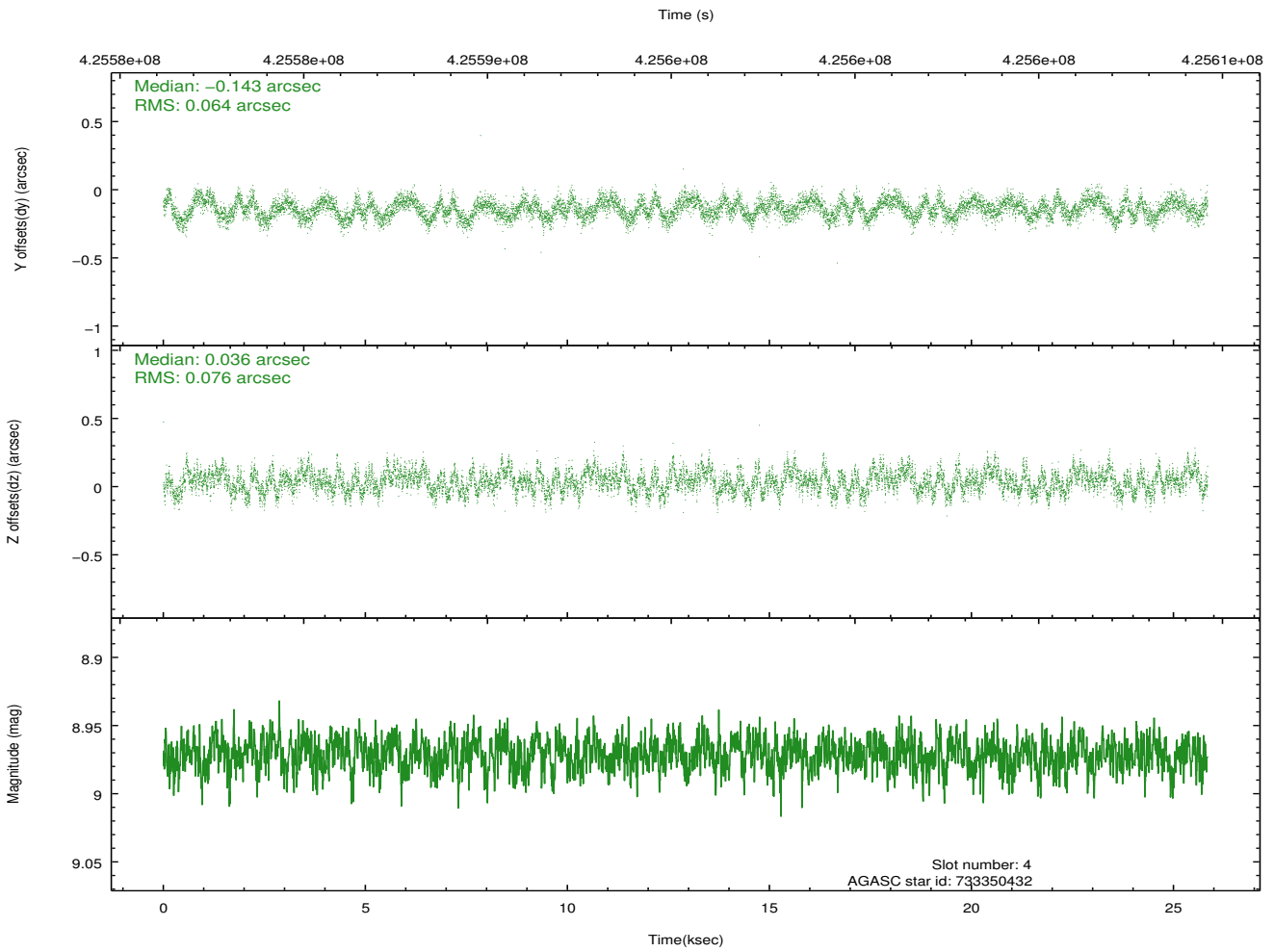
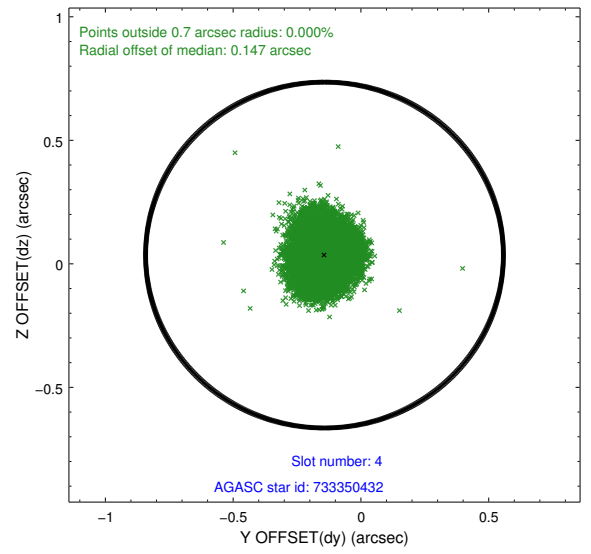
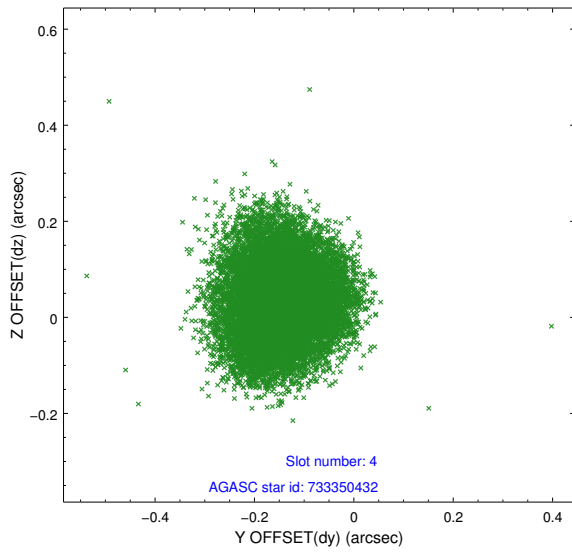
slot	status	id	mag	n_pts	med_dy	med_dz	dr1	dr2	ra	dec	mean_y	mean_z
0	FID	ACIS-S-2	7.01	6304	-0.091	-0.014	0.010	0.016	0.000000	0.000000	-771.55	-1737.50
1	FID	ACIS-S-4	7.09	6304	0.227	0.048	0.017	0.025	0.000000	0.000000	2141.99	170.93
2	FID	ACIS-S-5	7.12	6304	-0.168	-0.024	0.014	0.024	0.000000	0.000000	-1824.33	164.65
3	GUIDE	733348536	9.72	12595	-0.168	0.181	0.151	0.241	232.888498	-7.769764	-2238.07	-2038.68
4	GUIDE	733350432	8.97	12593	-0.143	0.036	0.107	0.165	233.452472	-8.490795	-1048.06	1020.40
5	GUIDE	733353816	9.73	12577	0.045	0.166	0.166	0.267	232.463958	-8.641101	1229.28	-1715.85
6	GUIDE	733354216	9.06	12573	-0.145	0.037	0.092	0.146	233.255105	-9.156899	1369.75	1652.09
7	GUIDE	733354576	7.25	12605	0.400	-0.423	0.076	0.133	232.161174	-8.747289	2114.02	-2441.32

## 2.4 Star Slots

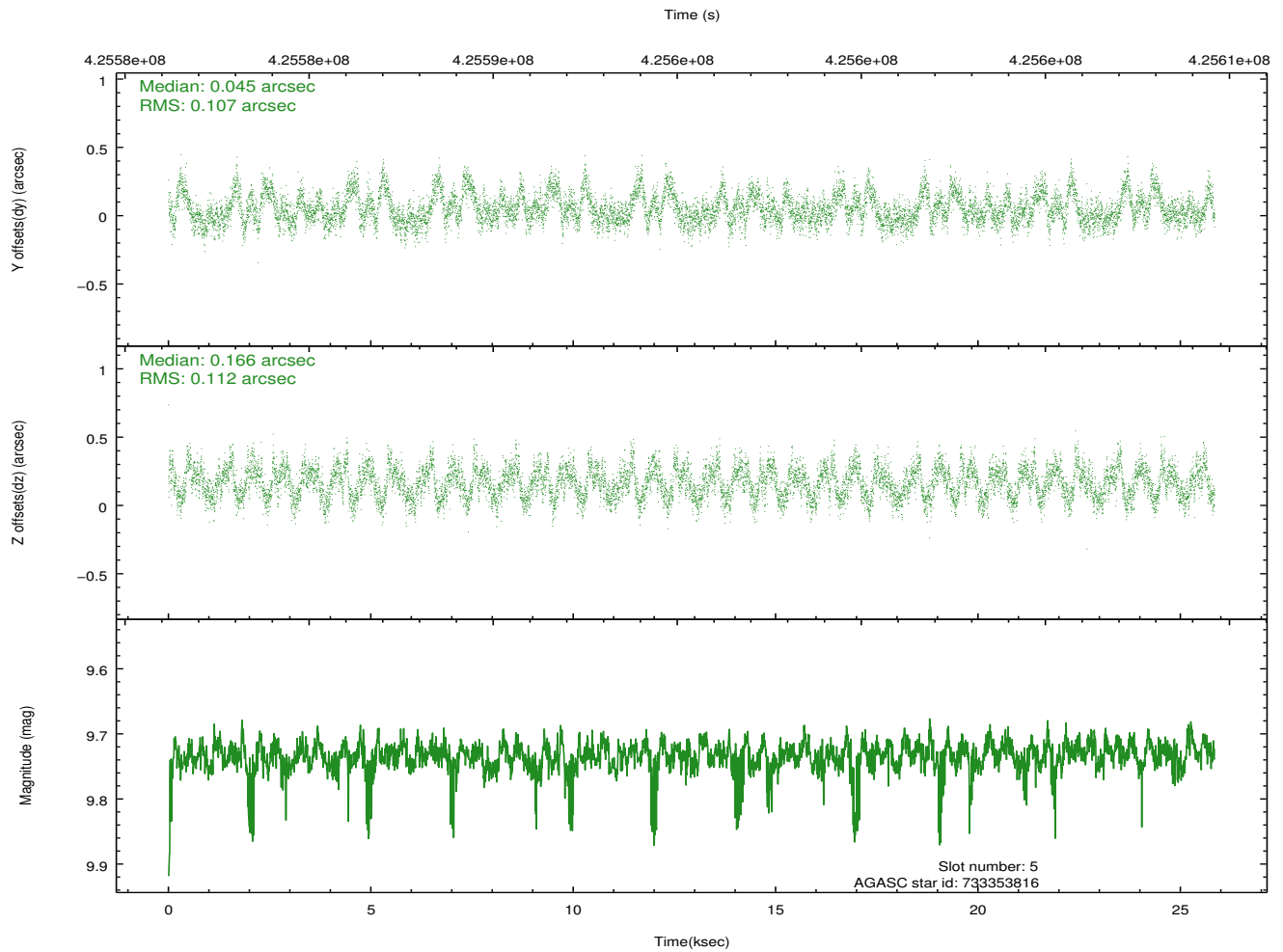
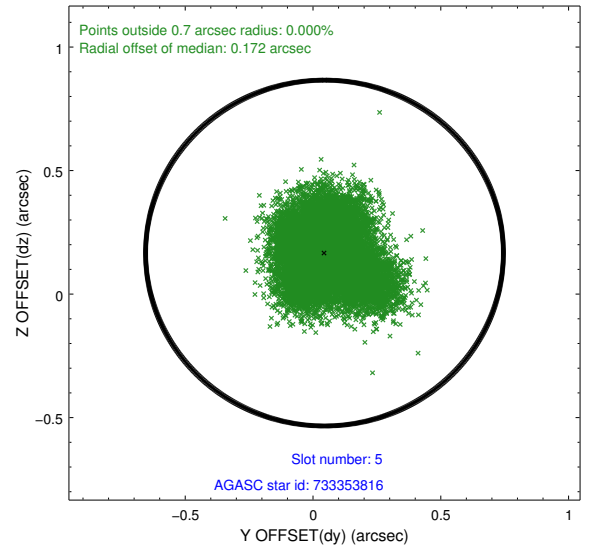
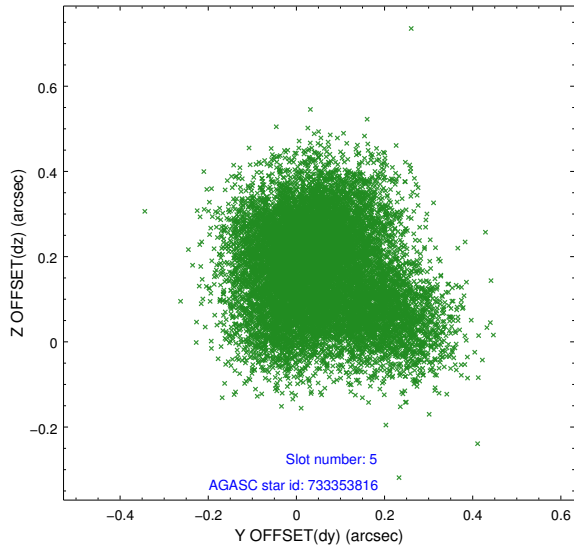
### 2.4.1 Slot 3



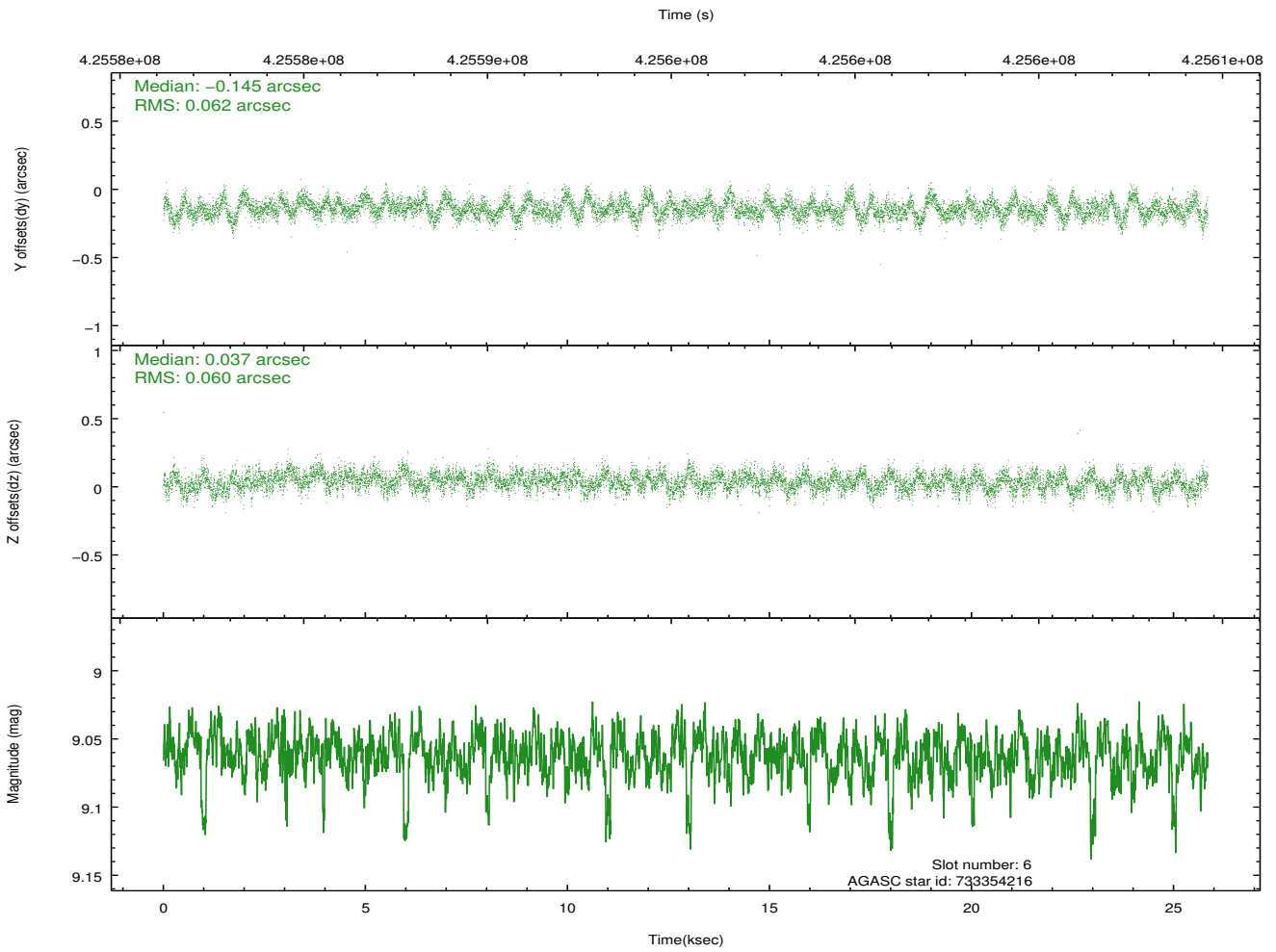
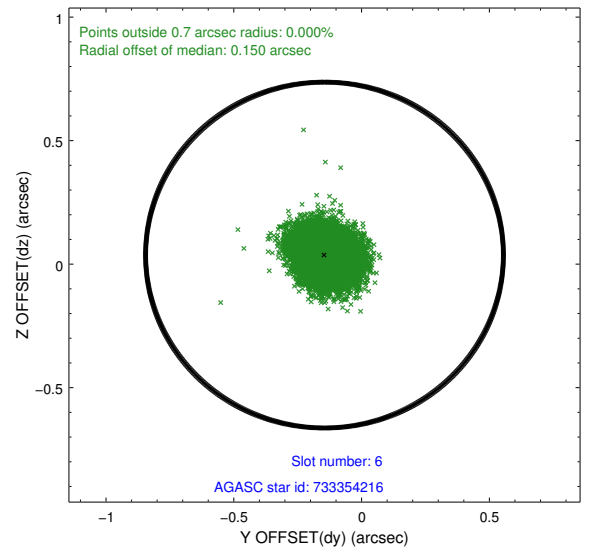
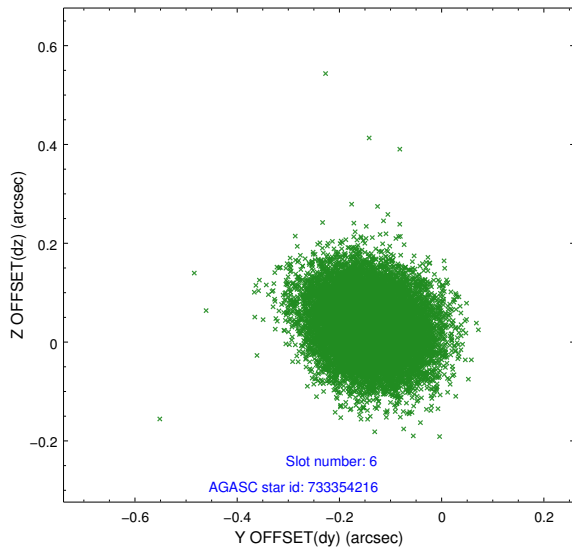
## 2.4.2 Slot 4



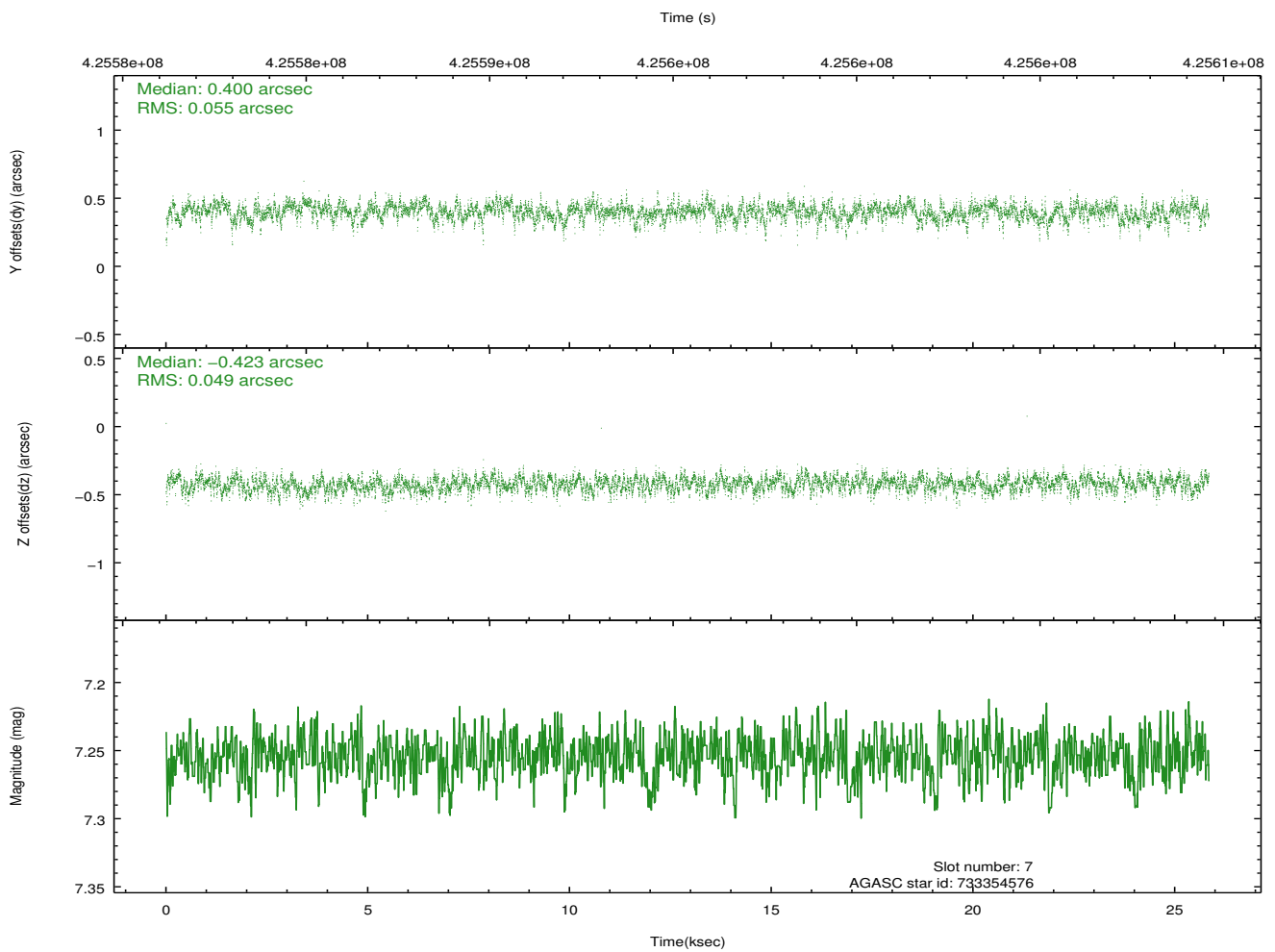
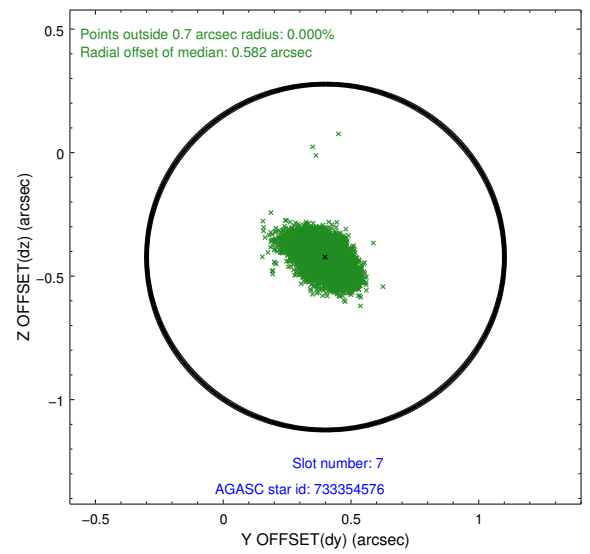
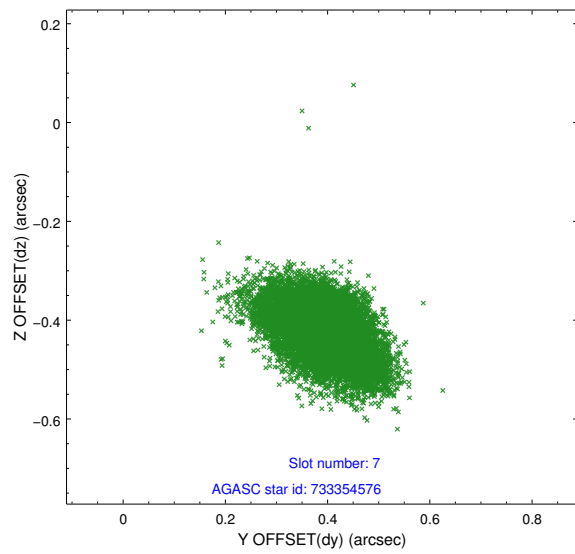
### 2.4.3 Slot 5



### 2.4.4 Slot 6

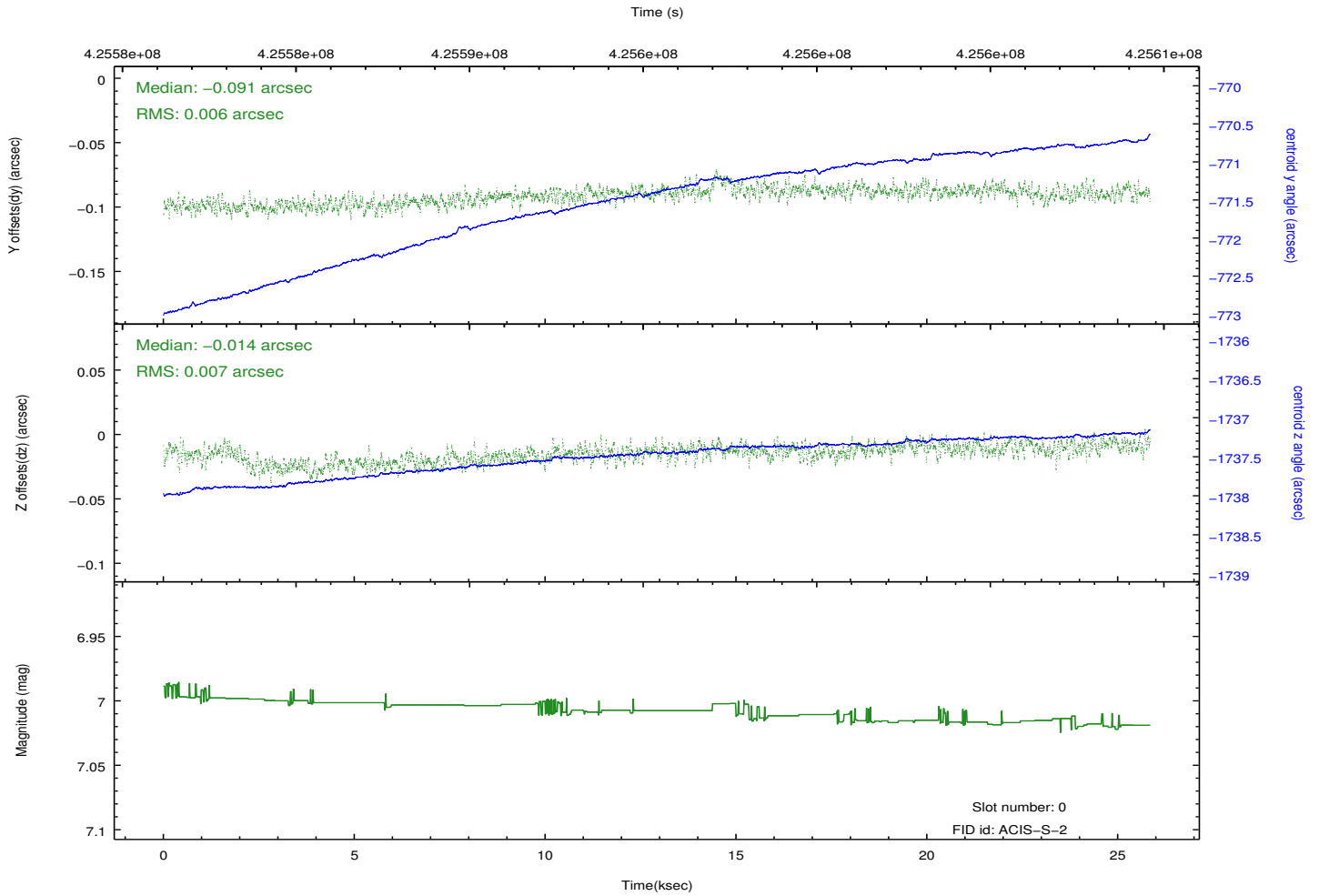
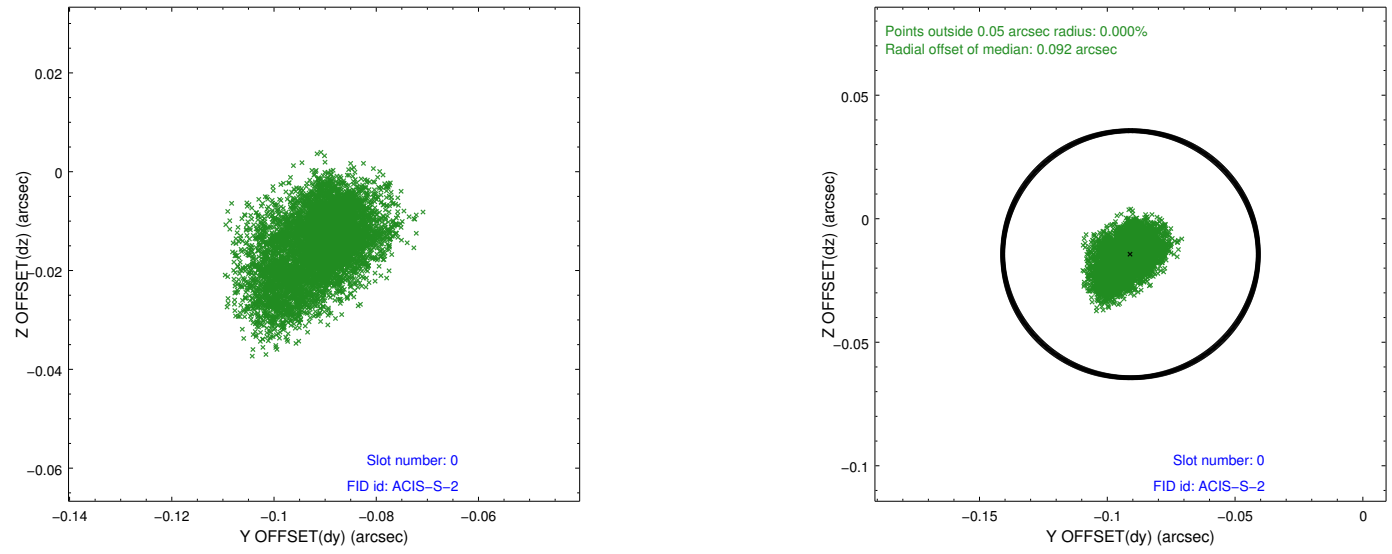


## 2.4.5 Slot 7

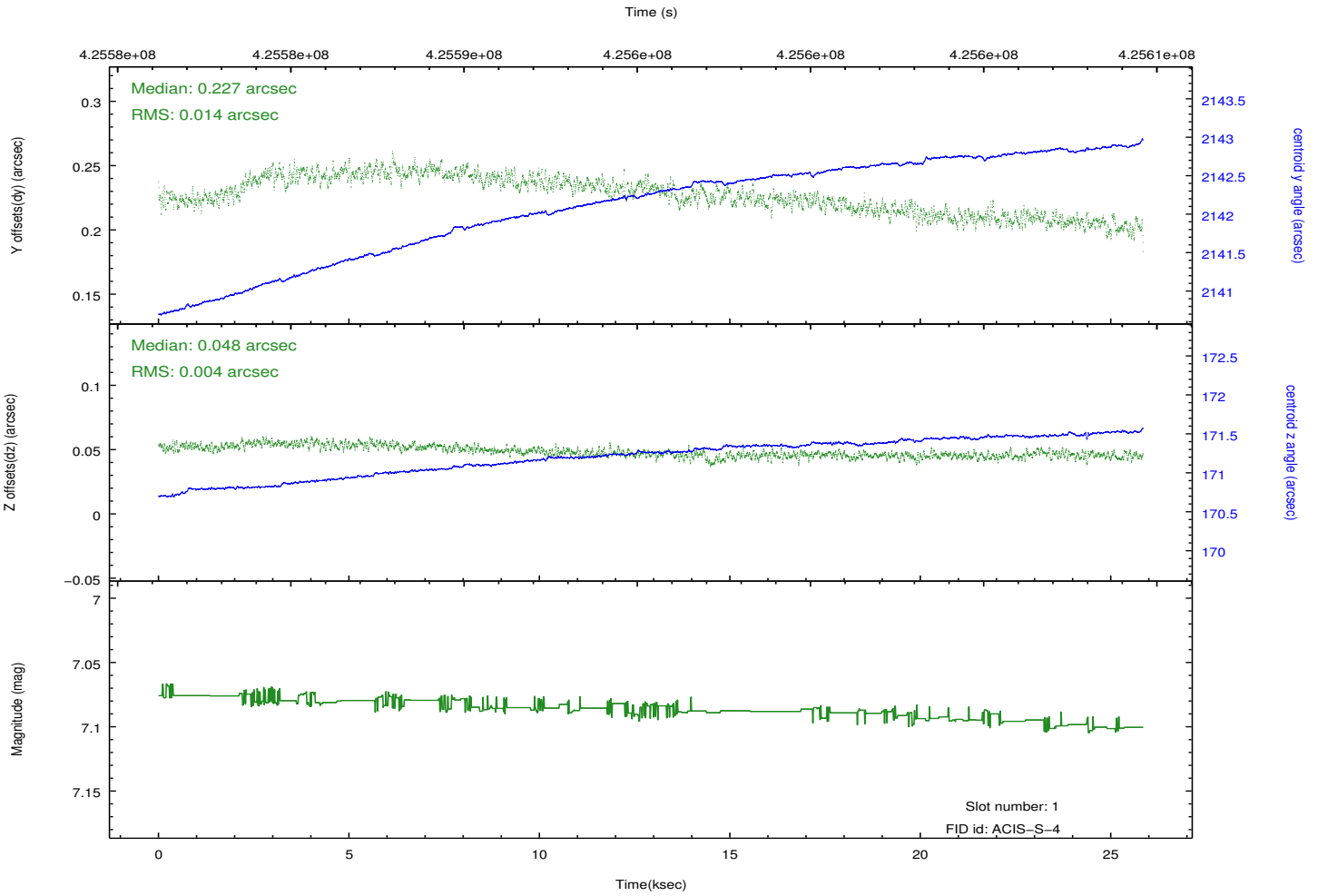
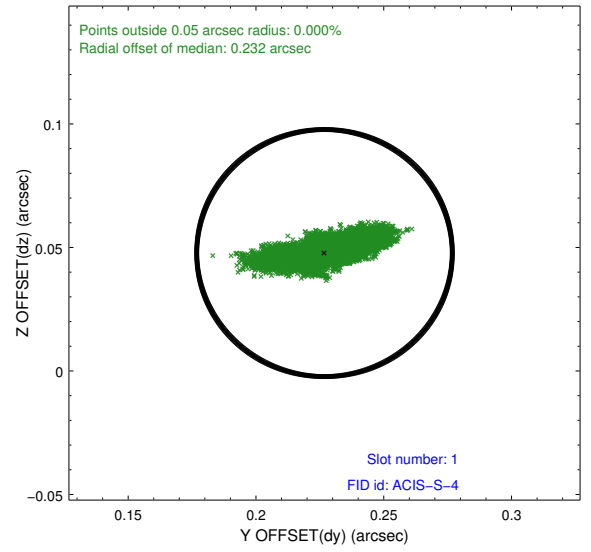
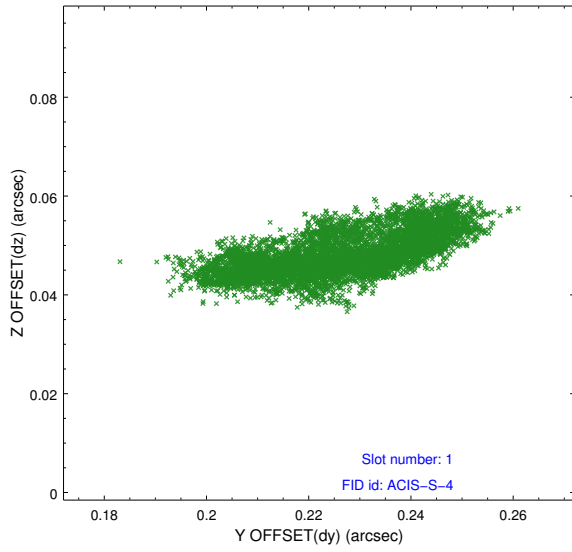


## 2.5 FID Slots

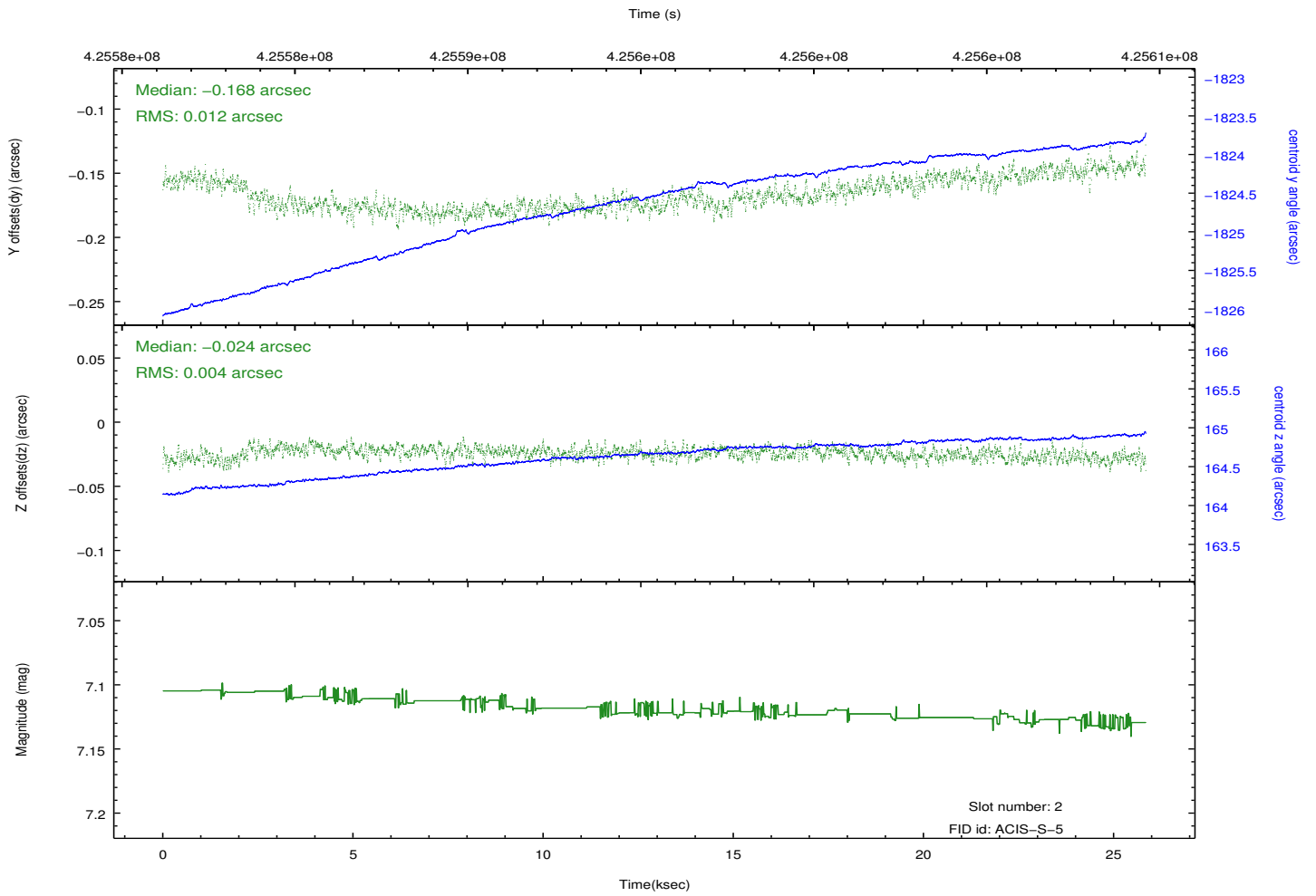
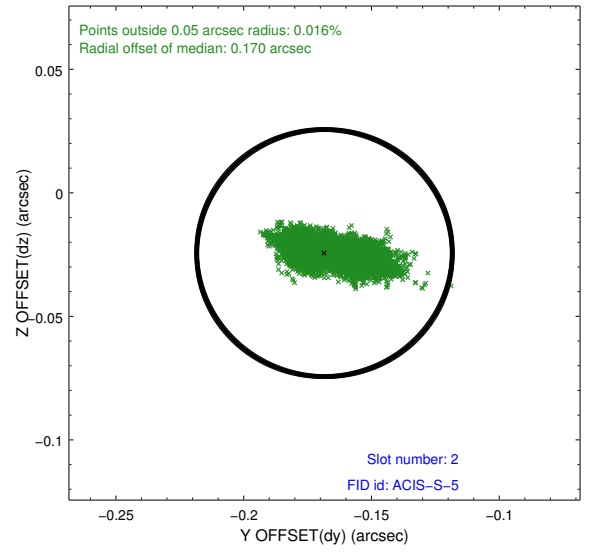
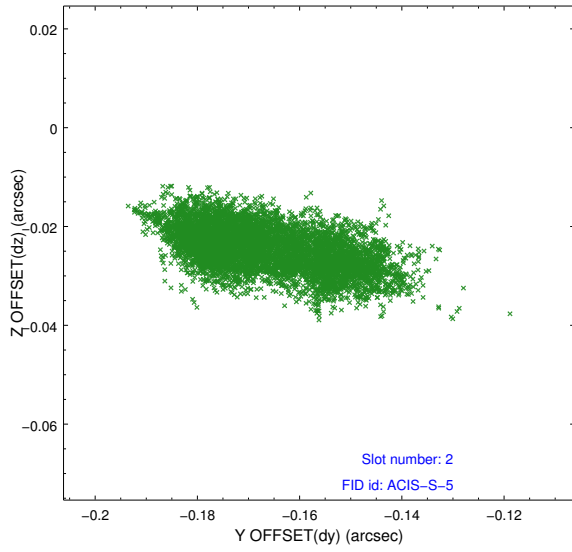
### 2.5.1 Slot 0



## 2.5.2 Slot 1



### 2.5.3 Slot 2



# A Summary

## A.1 Status

V&V Scientist	Jen Lauer
V&V Date (YYYY-MM-DD)	2012.02.14
V&V Edition	1
V&V Disposition and Status	OK
V&V Charge Time	25.711999904275

## A.2 Comments