

V&V Reference Report

L2 ASCDS Version : 8.4.5

Observation 13769 - L2 Version 1
Chandra X-Ray Center

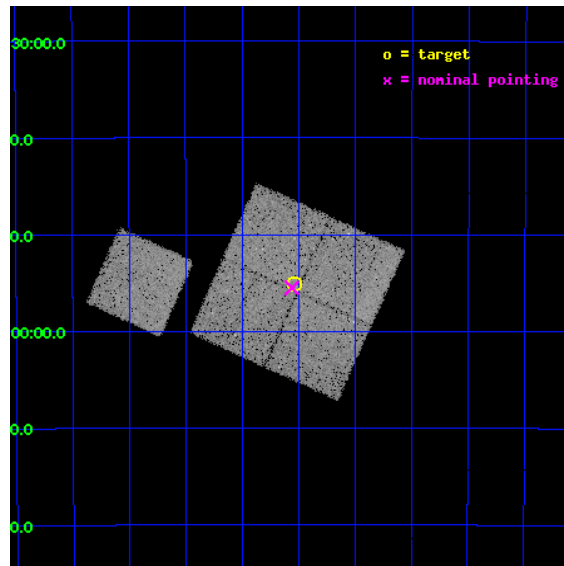
L2 Processing Date : Jun 20 2012

Contents

1	Front	2
2	OBI	3
2.1	OBI	3
2.1.1	Images	3
2.1.2	Bias	3
2.1.3	Parameters	4
2.1.4	Events	4
2.2	Compared Parameters	5
2.3	Aspect	6
2.4	Star Slots	9
2.4.1	Slot 3	9
2.4.2	Slot 4	10
2.4.3	Slot 5	11
2.4.4	Slot 6	12
2.4.5	Slot 7	13
2.5	FID Slots	14
2.5.1	Slot 0	14
2.5.2	Slot 1	15
2.5.3	Slot 2	16
A	Summary	17
A.1	Status	17
A.2	Comments	17

1 Front

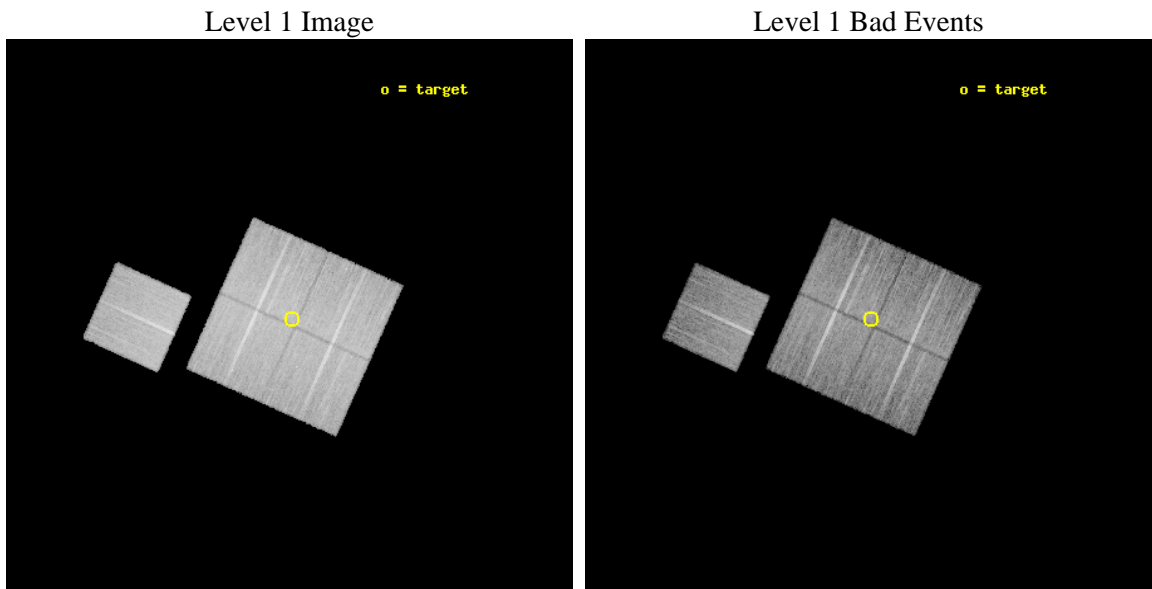
seq_num	501601	Sequence number
obs_id	13769	Observation id
title	Identification campaign of supernova remnant candidates in the Milky Way	Proposal title
observer	Dr. Regina H. H. Huang	Principal investigator
object	G337.2+13	Source name
dtcycle	0	
cycle	P	events from which exps? Prim/Second/Both
ra_targ	236.883333	Observer's specified target RA [deg]
dec_targ	-37.919167	Observer's specified target Dec [deg]
ra_nom	236.89013889973	Nominal RA [deg]
dec_nom	-37.925216918633	Nominal Dec [deg]
roll_nom	294.21287001234	Nominal Roll [deg]
revision	1	Processing version of data
ontime	25075.153080702	Sum of GTIs [s]
livetime	24747.527745643	Livetime [s]
ontime0	25075.029960692	Sum of GTIs [s]
ontime1	25075.071000695	Sum of GTIs [s]
ontime2	25075.112040699	Sum of GTIs [s]
ontime3	25075.153080702	Sum of GTIs [s]
ontime6	25074.988920689	Sum of GTIs [s]
l2events	74373	Number of level 2 events



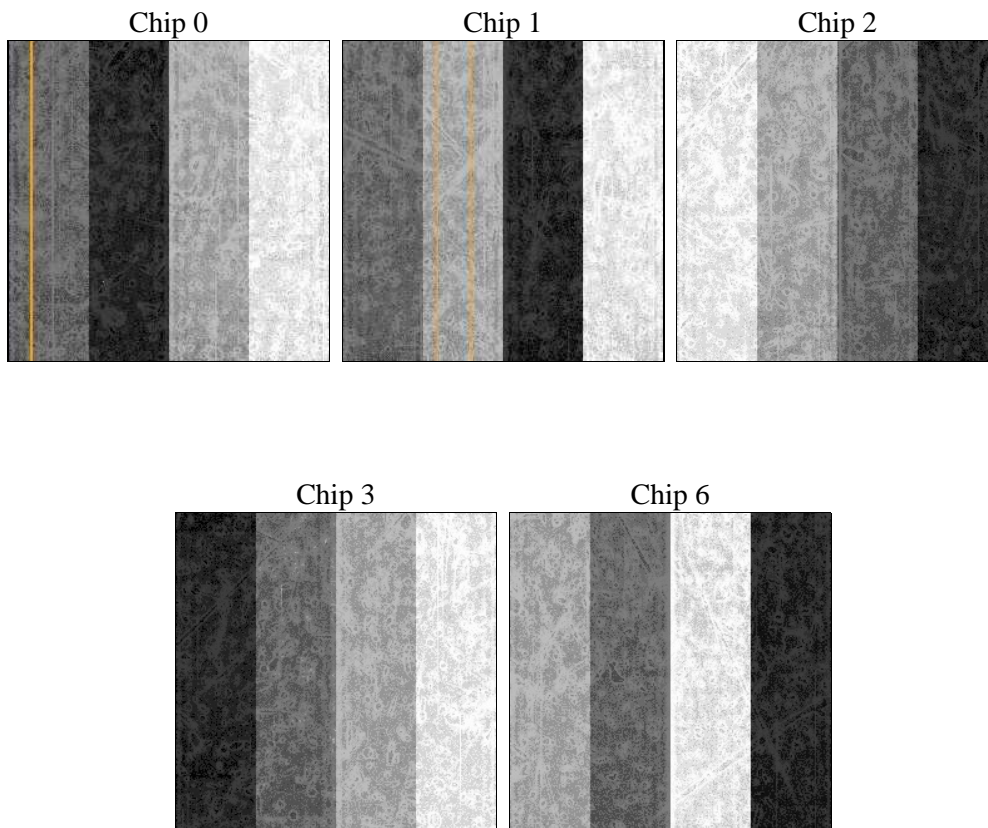
2 OBI

2.1 OBI

2.1.1 Images



2.1.2 Bias



2.1.3 Parameters

obi_num	0	Obi number	sched_exp_time	25000.000000	[s] Scheduled observation exposure time
ascdsver	8.4.5	Processing system revision	ontime	25075.153080702	Sum of GTIs [s]
caldbver	4.4.10	 	ontime0	25075.029960692	Sum of GTIs [s]
date	2012-06-20T16:13:17	Date and time of file creation	ontime1	25075.071000695	Sum of GTIs [s]
revision	1	Processing version of data	ontime2	25075.112040699	Sum of GTIs [s]
			ontime3	25075.153080702	Sum of GTIs [s]
			ontime6	25074.988920689	Sum of GTIs [s]
			l1events	692452	Number of level 1 events

2.1.4 Events

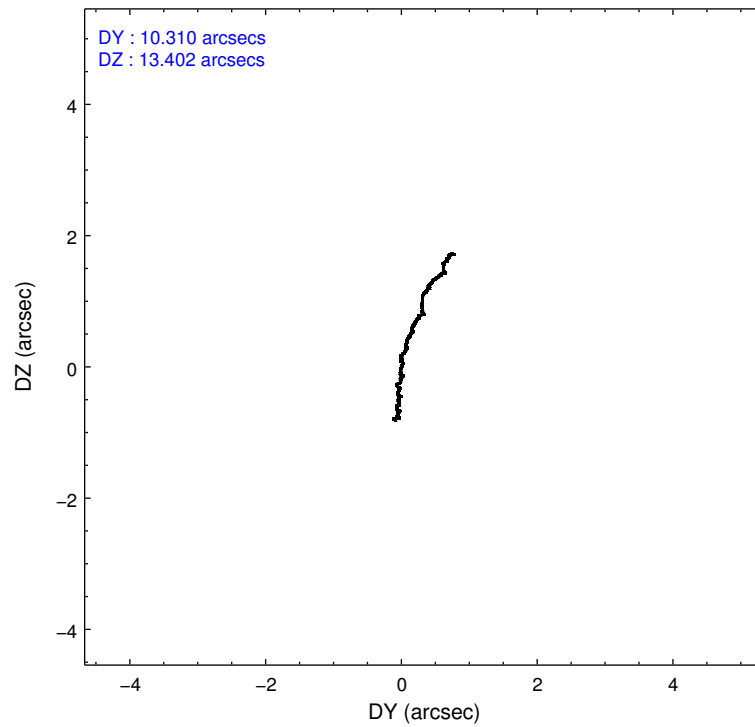
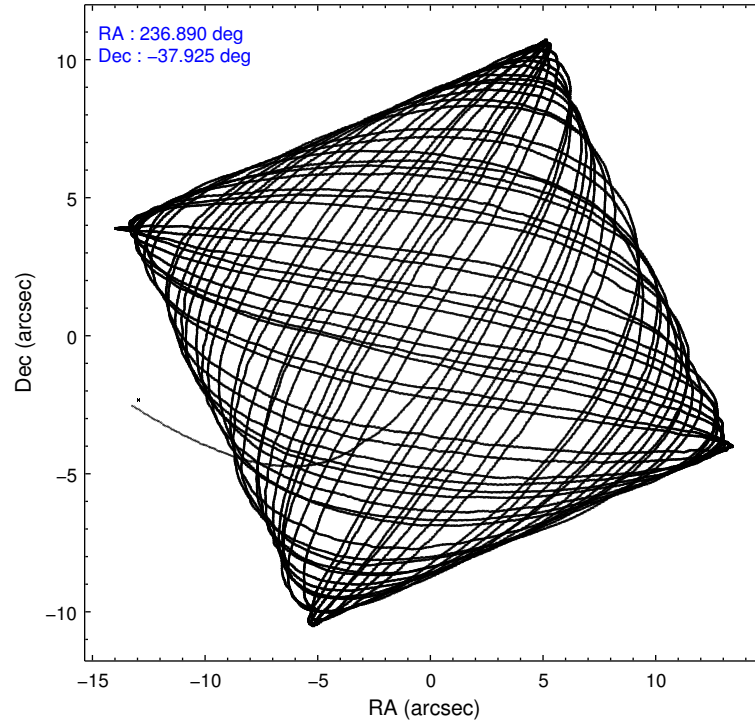
	ccd 0	ccd 1	ccd 2	ccd 3	ccd 6
level 1 events	128328	137647	143860	141646	140971
rejected events	111048	118054	127036	125091	123374
rejected %	86%	85%	88%	88%	87%

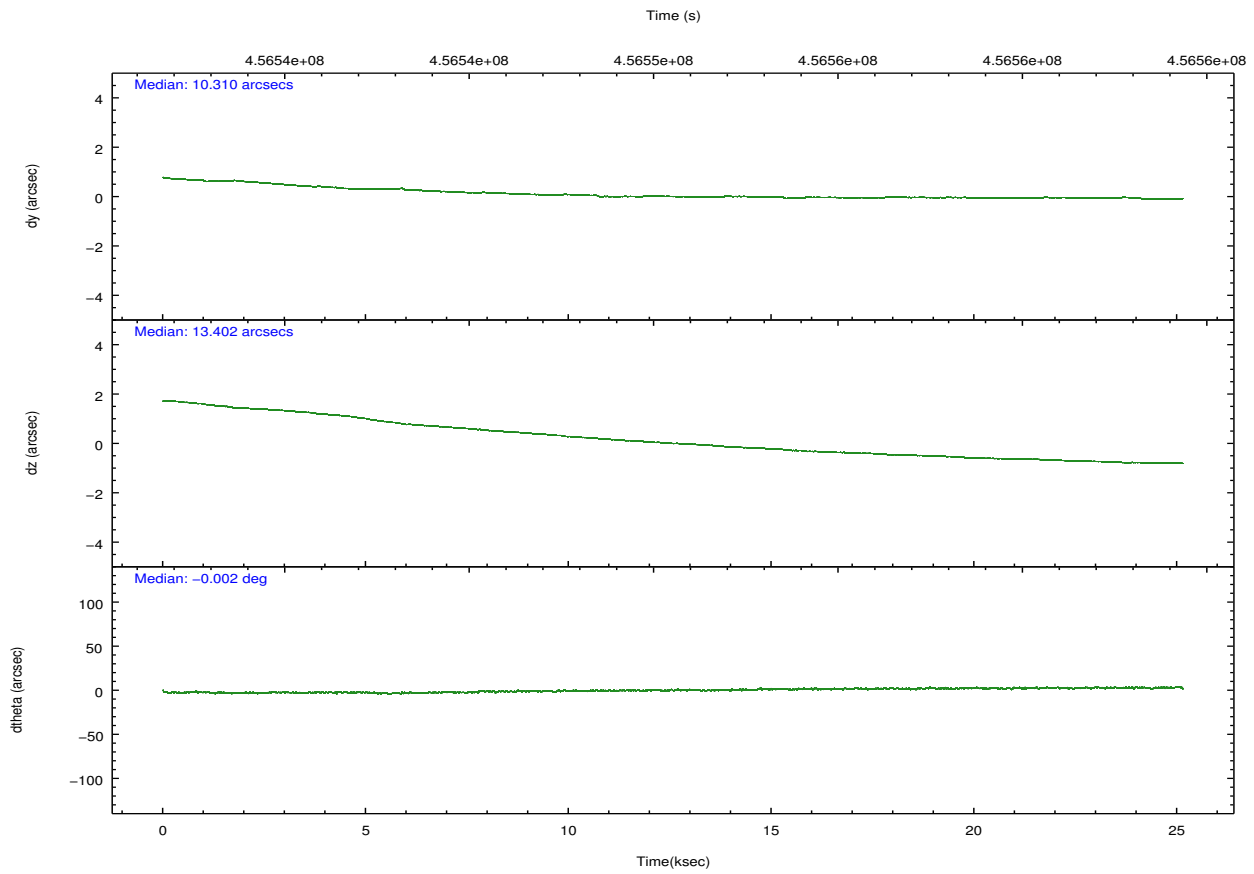
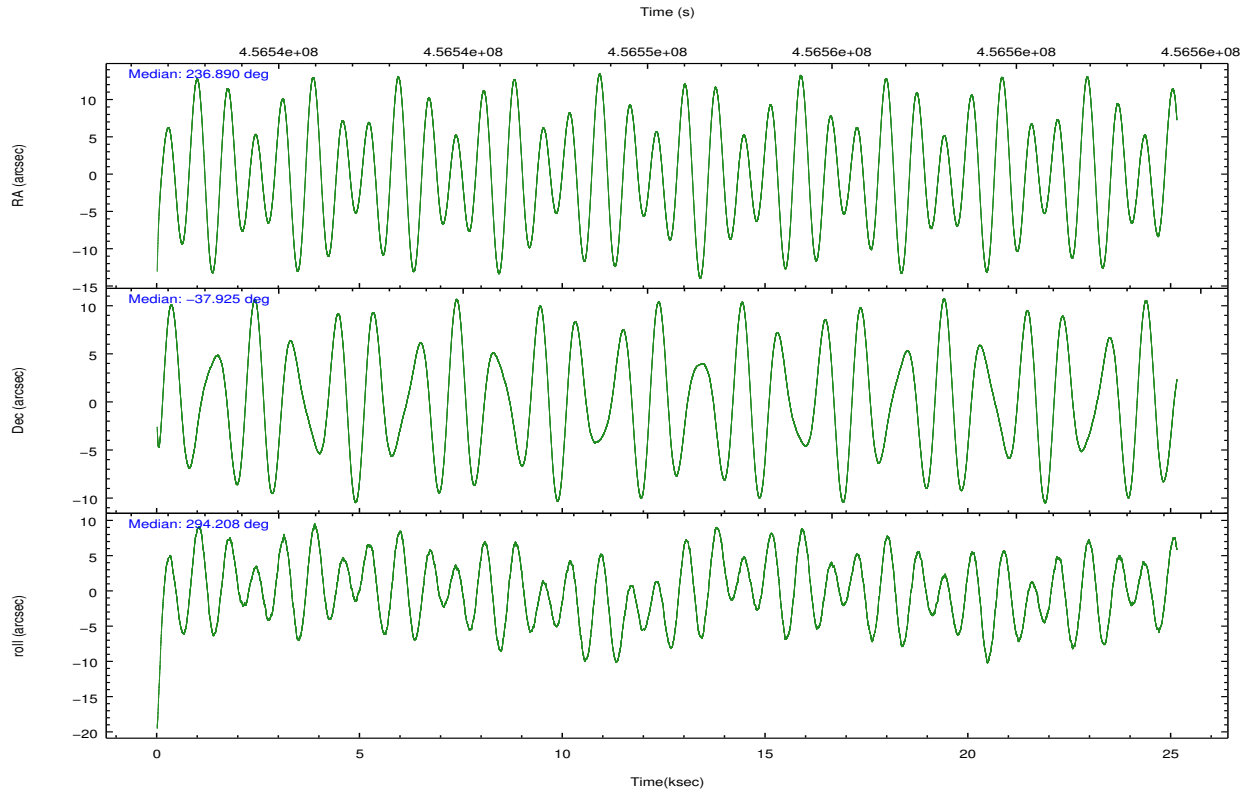
	ccd 0	ccd 1	ccd 2	ccd 3	ccd 6
grade 0 events	6464	7465	6407	6280	6351
	5%	5%	4%	4%	4%
grade 1 events	75	79	98	81	74
	0%	0%	0%	0%	0%
grade 2 events	4060	4558	3963	3632	3843
	3%	3%	2%	2%	2%
grade 3 events	1807	1916	1665	1732	1750
	1%	1%	1%	1%	1%
grade 4 events	1558	1772	1689	1713	1776
	1%	1%	1%	1%	1%
grade 5 events	6430	6818	6148	7173	7070
	5%	4%	4%	5%	5%
grade 6 events	3392	3885	3105	3199	3879
	2%	2%	2%	2%	2%
grade 7 events	104542	111154	120785	117836	116228
	81%	80%	83%	83%	82%

2.2 Compared Parameters

Parameter	Planned	Actual	Parameter	Planned	Actual
Instrument	ACIS	ACIS	Obspar format version number	7	7
Detector	ACIS-01236	ACIS-01236	Obspar file type	PREDICTED	ACTUAL
Grating	NONE	NONE	Obspar update status	NONE	UPDATED
Data mode	VFAINT	VFAINT	CCD I0 on	Y	Y
Observation mode	POINTING	POINTING	CCD I1 on	Y	Y
[deg] Pointing RA	236.861770	236.8901388997289	CCD I2 on	Y	Y
[deg] Pointing Dec	-37.909233	-37.92521691863341	CCD I3 on	Y	Y
[deg] Pointing Roll	293.986752	294.2128700123372	CCD S0 on	N	N
[mm] SIM focus pos	-0.782348	-0.7809083437167272	CCD S1 on	N	N
[mm] SIM defocus	0	0.001439871863259334	CCD S2 on	O1	Y
[mm] SIM translation stage pos	-233.592463	-233.5874344608287	CCD S3 on	N	N
[mm] SIM translation stage offset	0	-0.005018542100998502	CCD S4 on	N	N
[s] Observation start time (MET)	456538109.184000	456536836.13809	CCD S5 on	N	N
Observation start date	2012-06-20T00:07:23	2012-06-19T23:47:16	Number of optional ACIS chips dropped	0	0
[s] Observation end time (MET)	456563109.184000	456564181.60204	On-chip summing requested	N	N
Observation end date	2012-06-20T07:04:03	2012-06-20T07:23:01	Subarray requested	NONE	NONE
Read mode	TIMED	TIMED	Alternating exposures requested	N	N
			[s] Primary exposure time	0.000000	3.1

2.3 Aspect



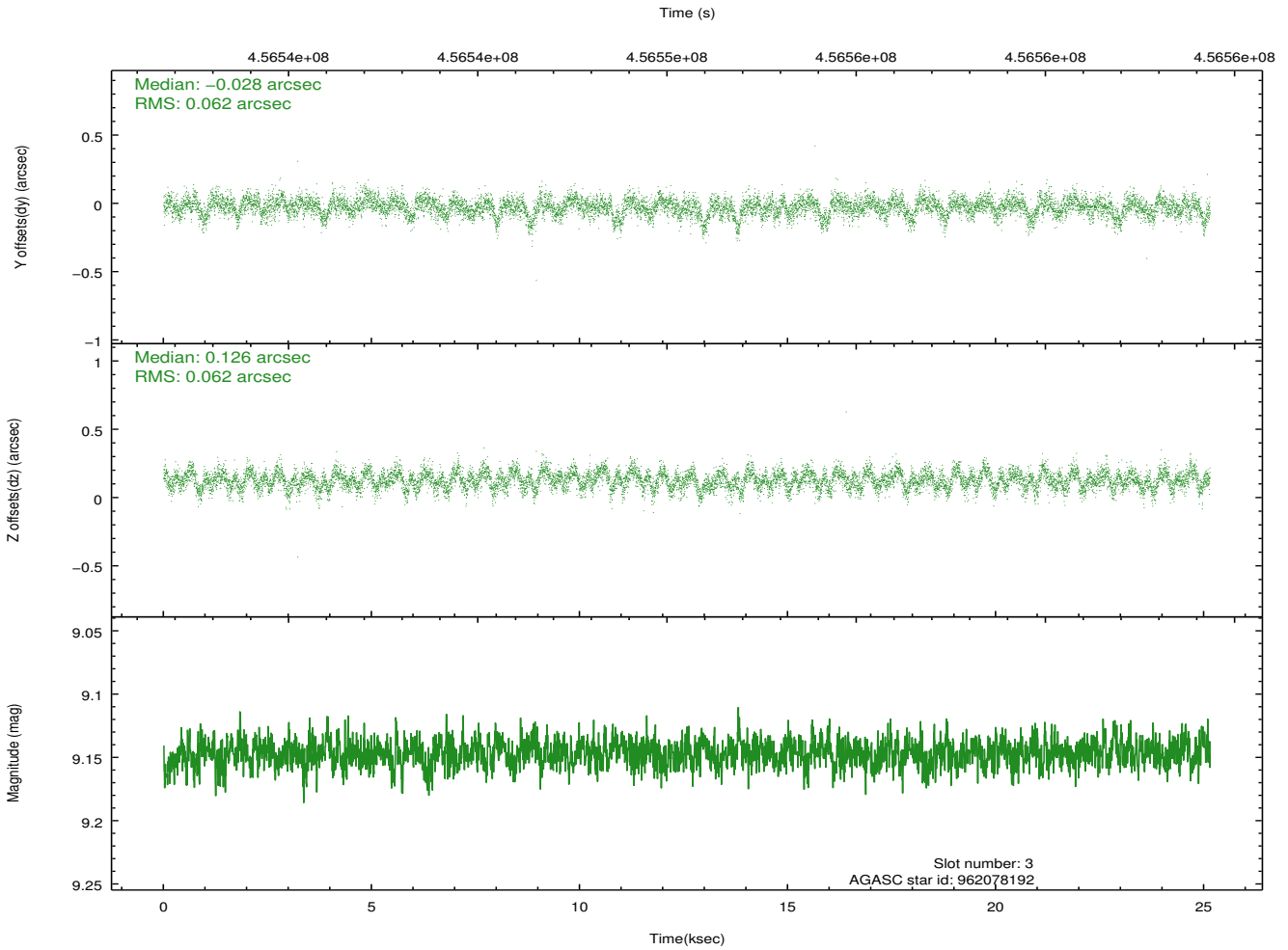
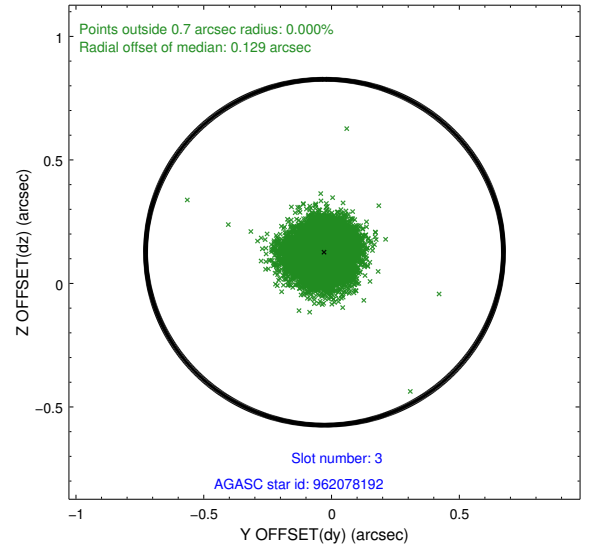
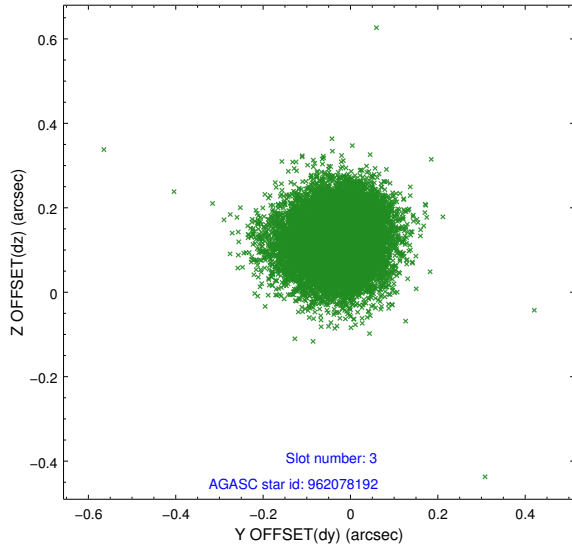


Slot Statistics

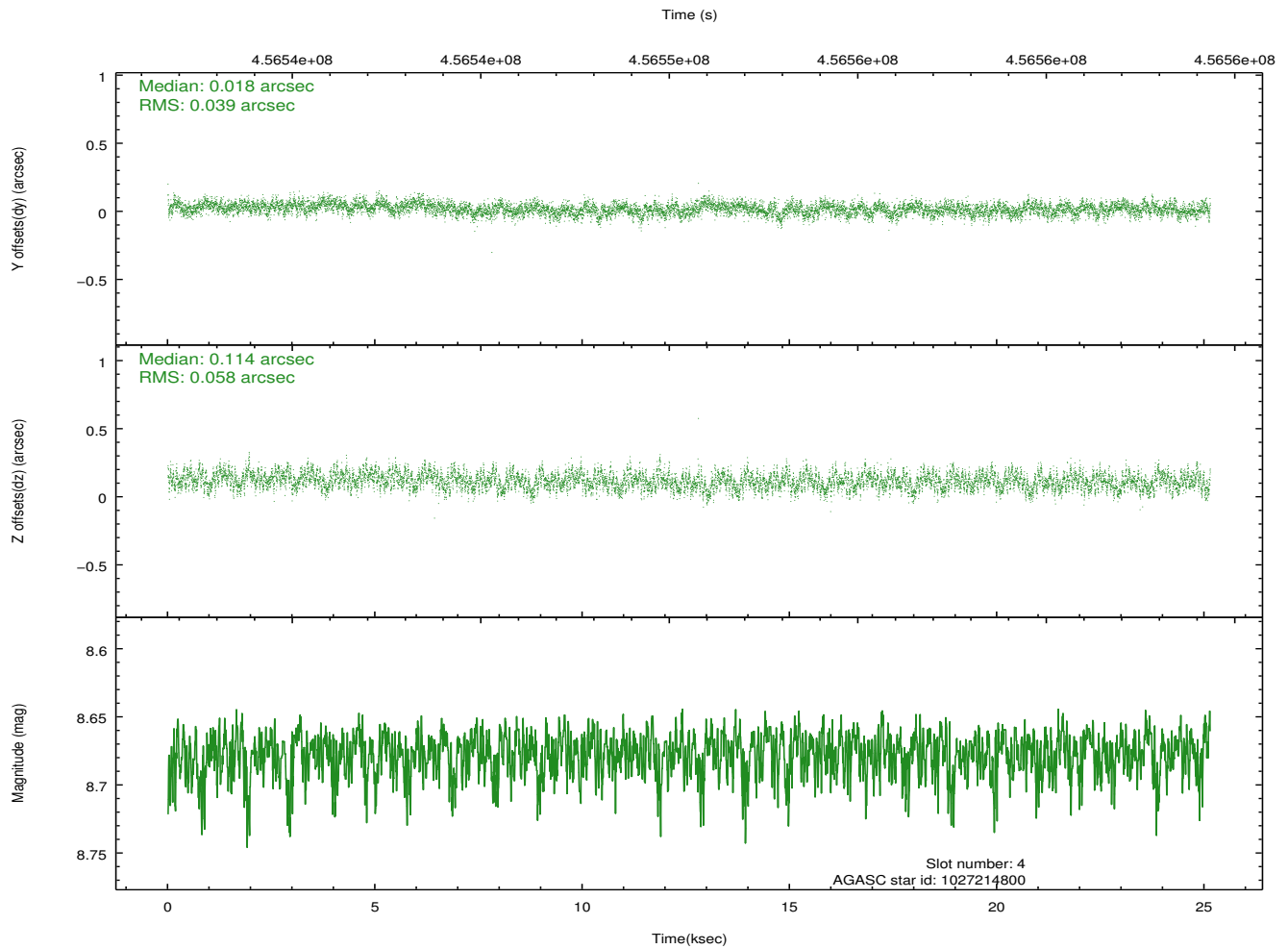
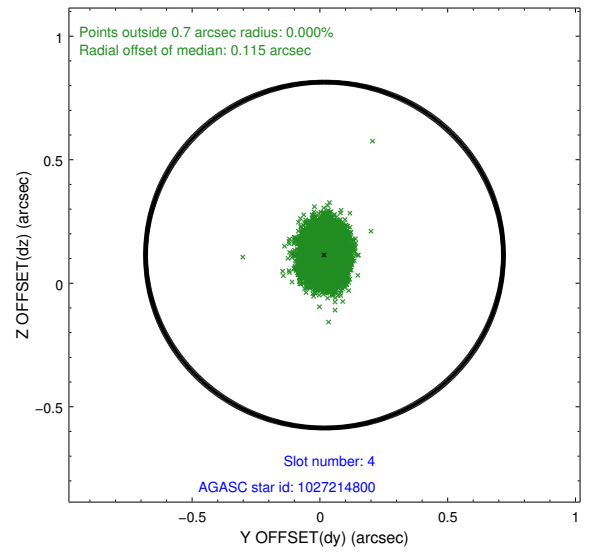
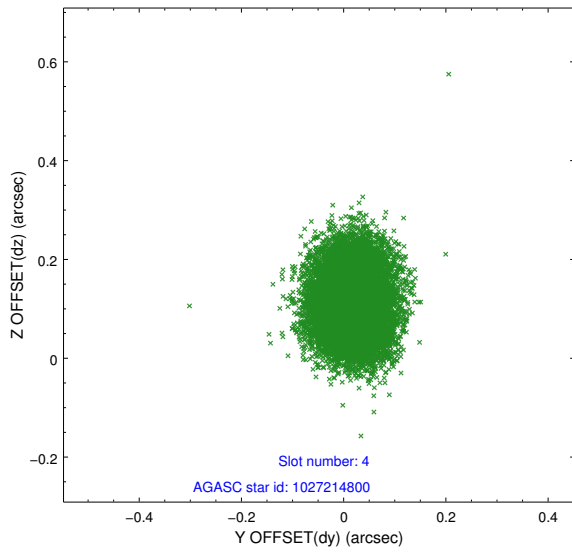
slot	status	id	mag	n_pts	med_dy	med_dz	dr1	dr2	ra	dec	mean_y	mean_z
0	FID	ACIS-I-1	7.06	6133	0.027	0.000	0.018	0.029	0.000000	0.000000	929.17	-837.14
1	FID	ACIS-I-4	7.00	6133	0.141	0.011	0.012	0.024	0.000000	0.000000	2149.41	1062.61
2	FID	ACIS-I-5	7.04	6133	-0.268	0.059	0.021	0.042	0.000000	0.000000	-1818.95	1060.67
3	GUIDE	962078192	9.15	12254	-0.028	0.126	0.092	0.150	236.897638	-37.247416	-2135.17	1062.21
4	GUIDE	1027214800	8.68	12260	0.018	0.114	0.074	0.121	235.950454	-37.746444	-1578.22	-2136.89
5	GUIDE	1027223496	8.67	12255	0.060	0.089	0.072	0.116	236.928048	-38.388740	1653.49	-530.81
6	GUIDE	1027221712	8.47	12262	0.171	-0.163	0.075	0.133	236.407690	-38.720725	2154.29	-2354.22
7	GUIDE	1027343344	6.30	12201	-0.213	-0.170	0.063	0.102	237.921594	-38.158153	2054.08	2369.59

2.4 Star Slots

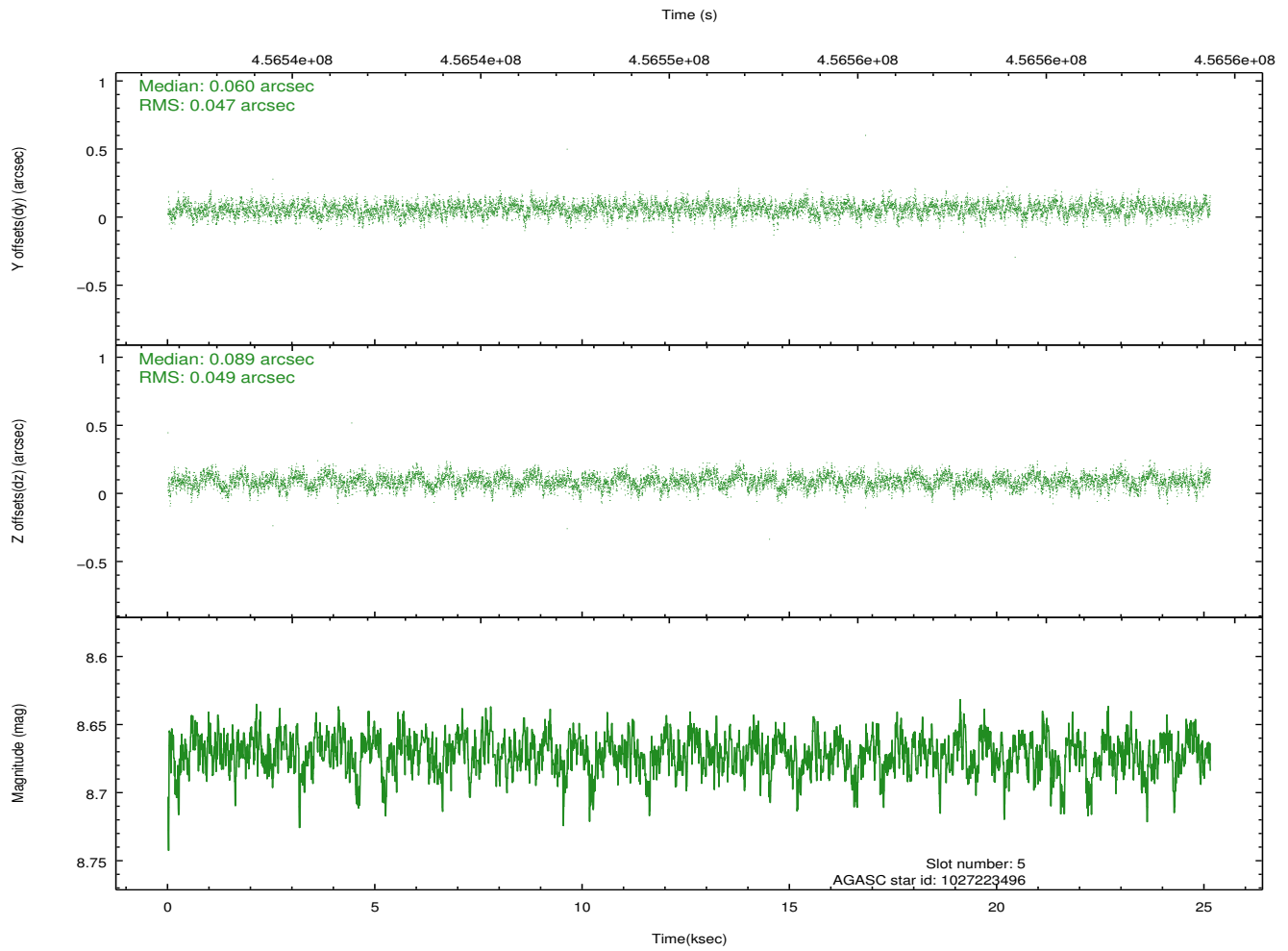
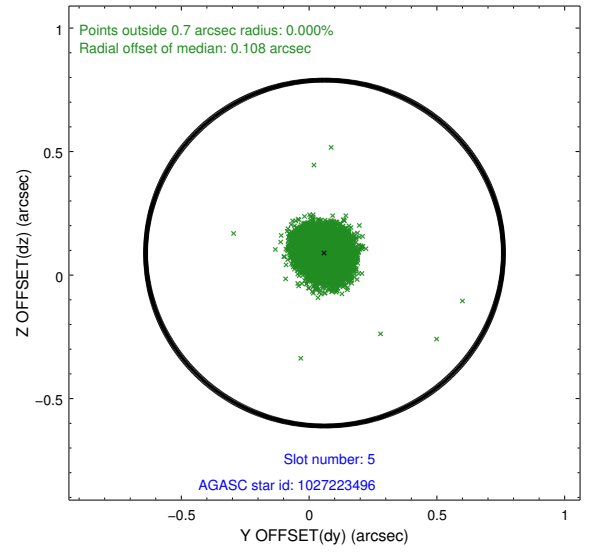
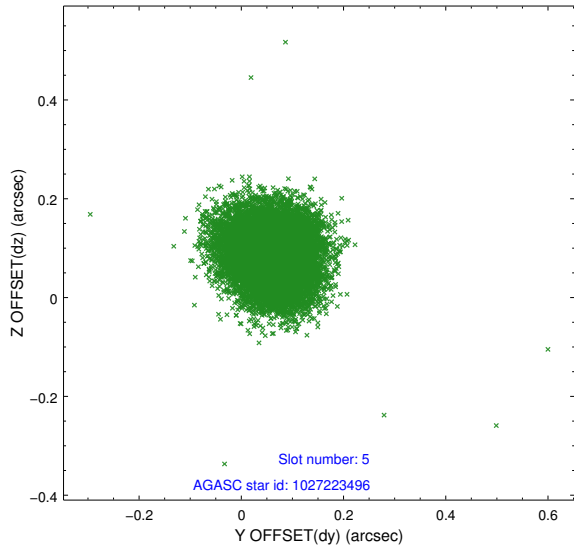
2.4.1 Slot 3



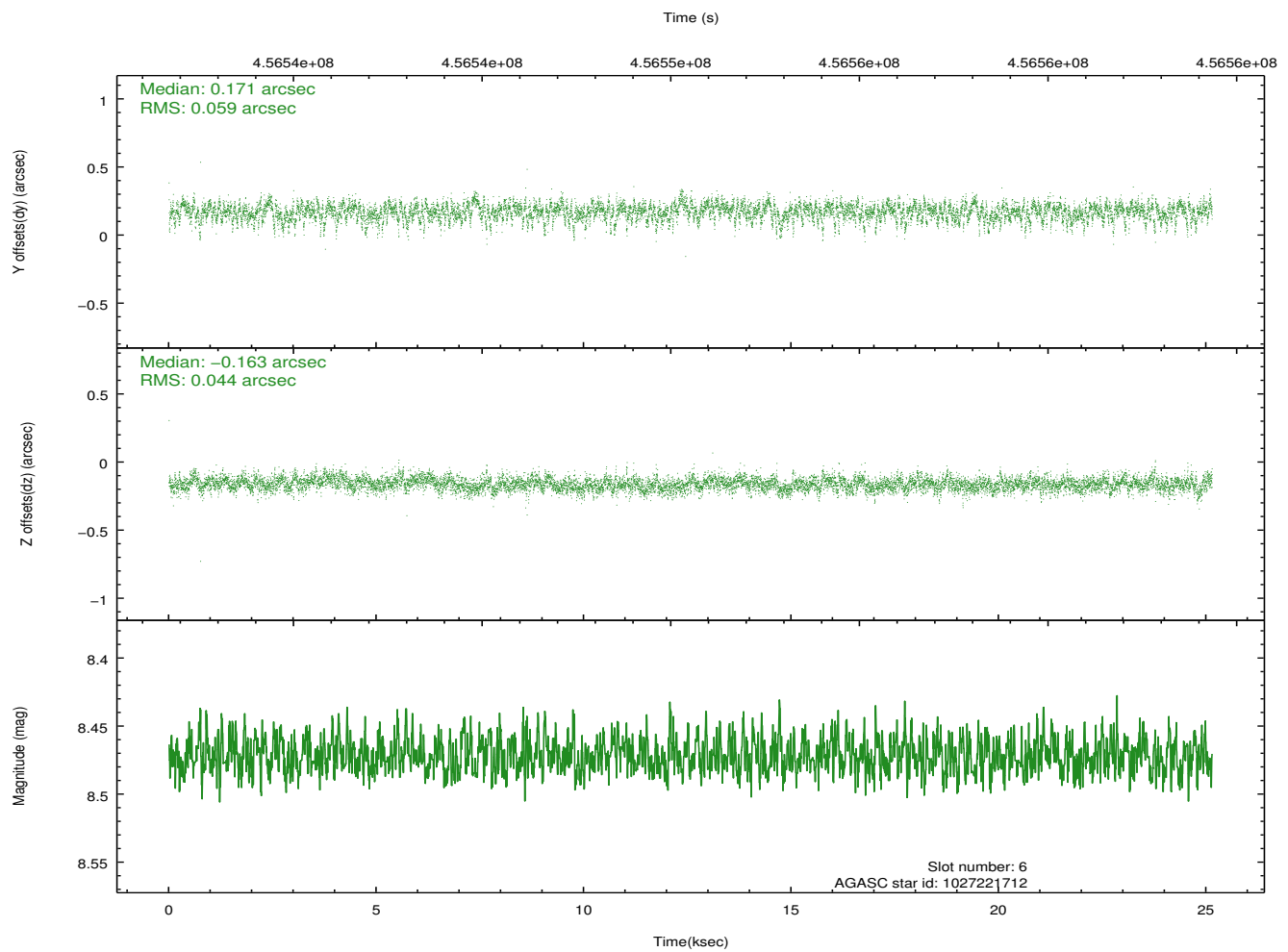
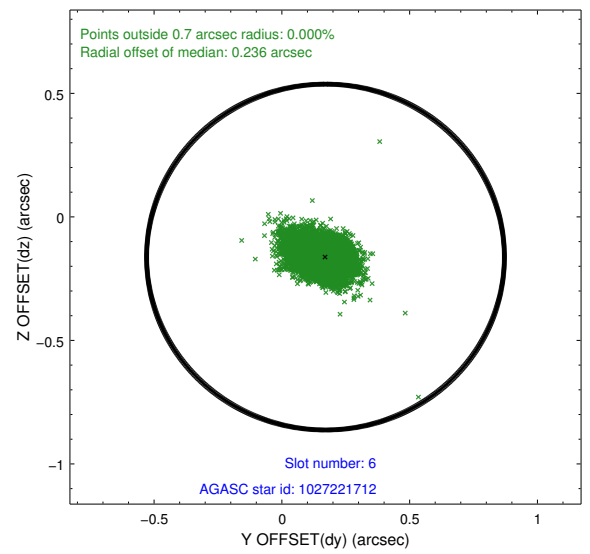
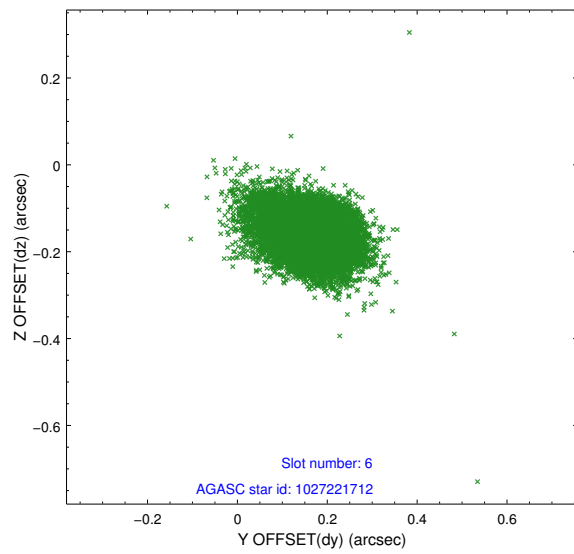
2.4.2 Slot 4



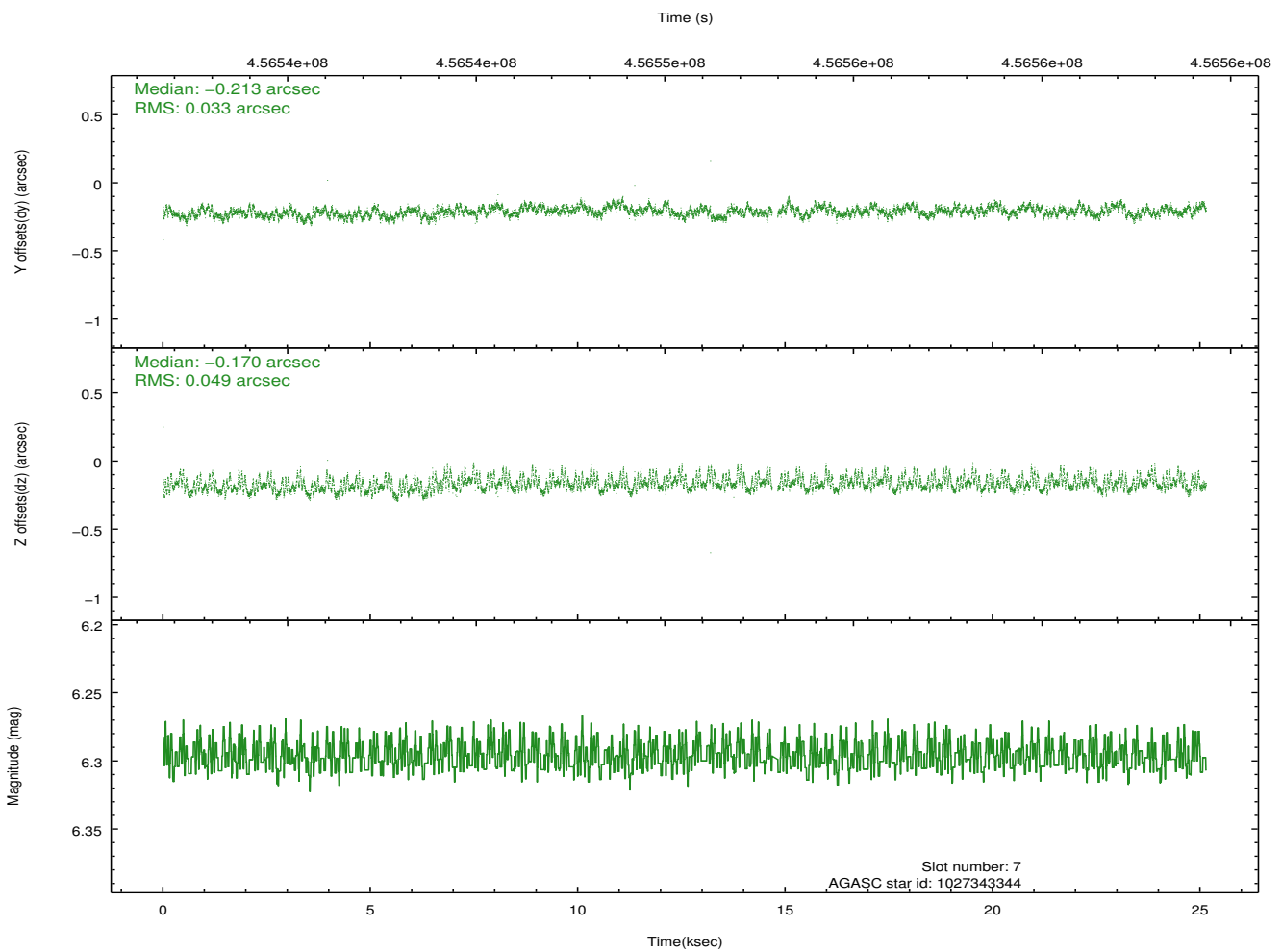
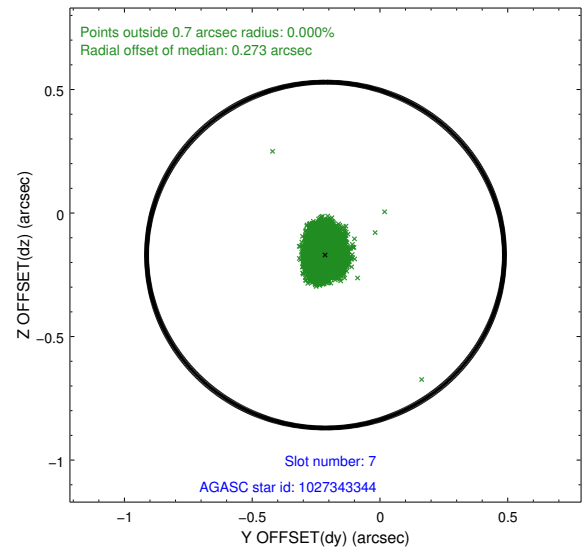
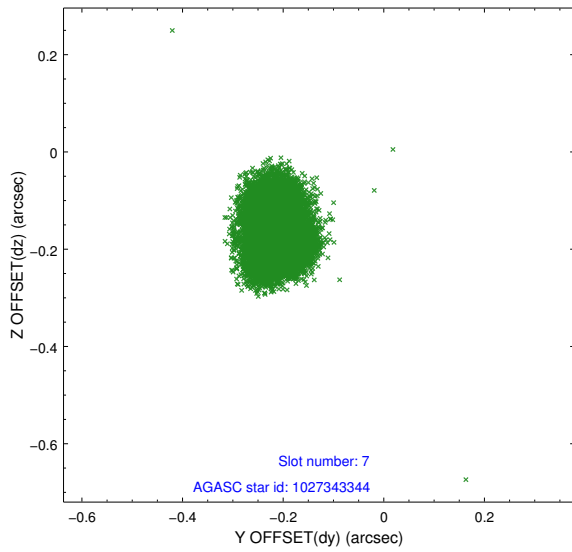
2.4.3 Slot 5



2.4.4 Slot 6

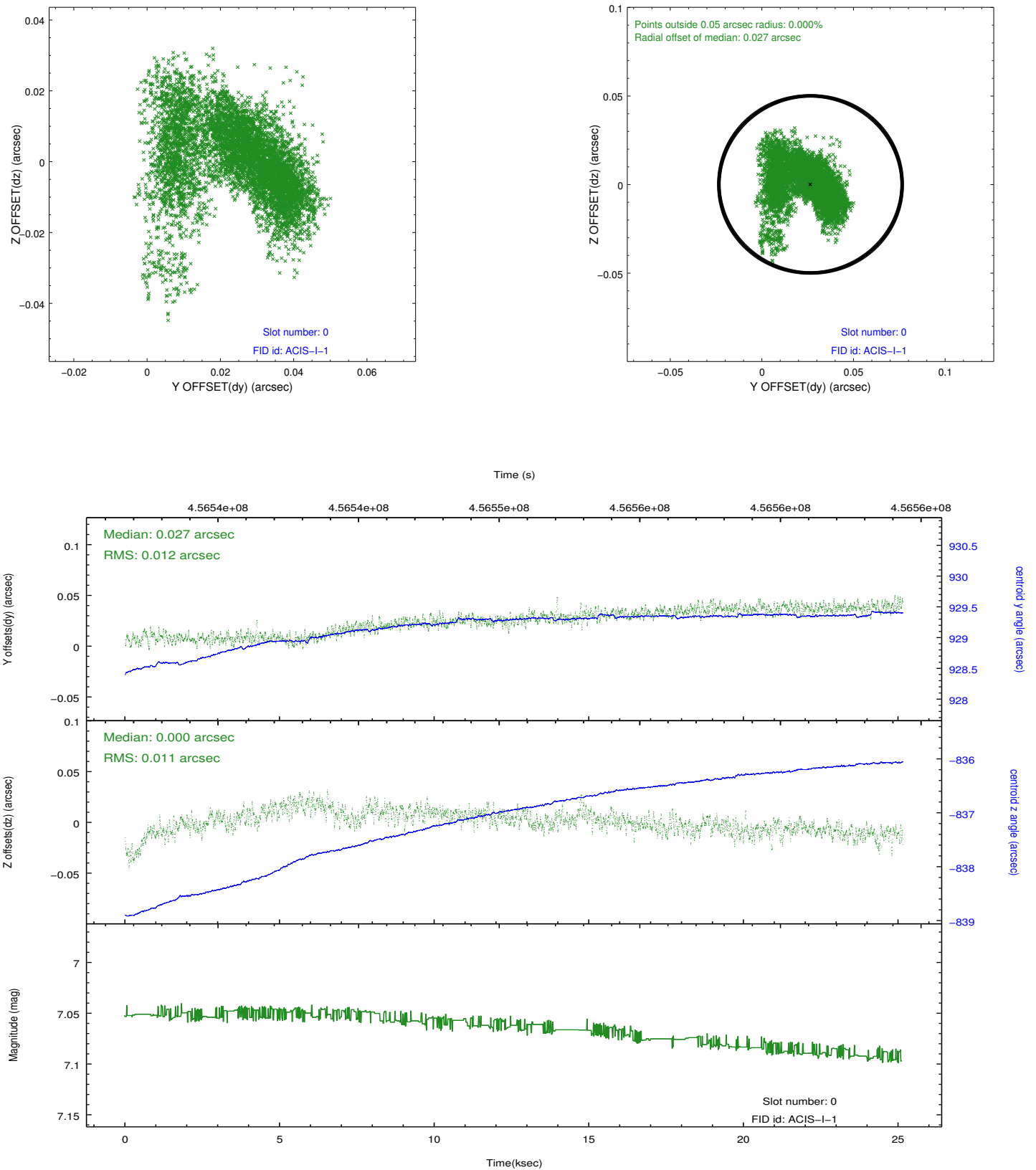


2.4.5 Slot 7

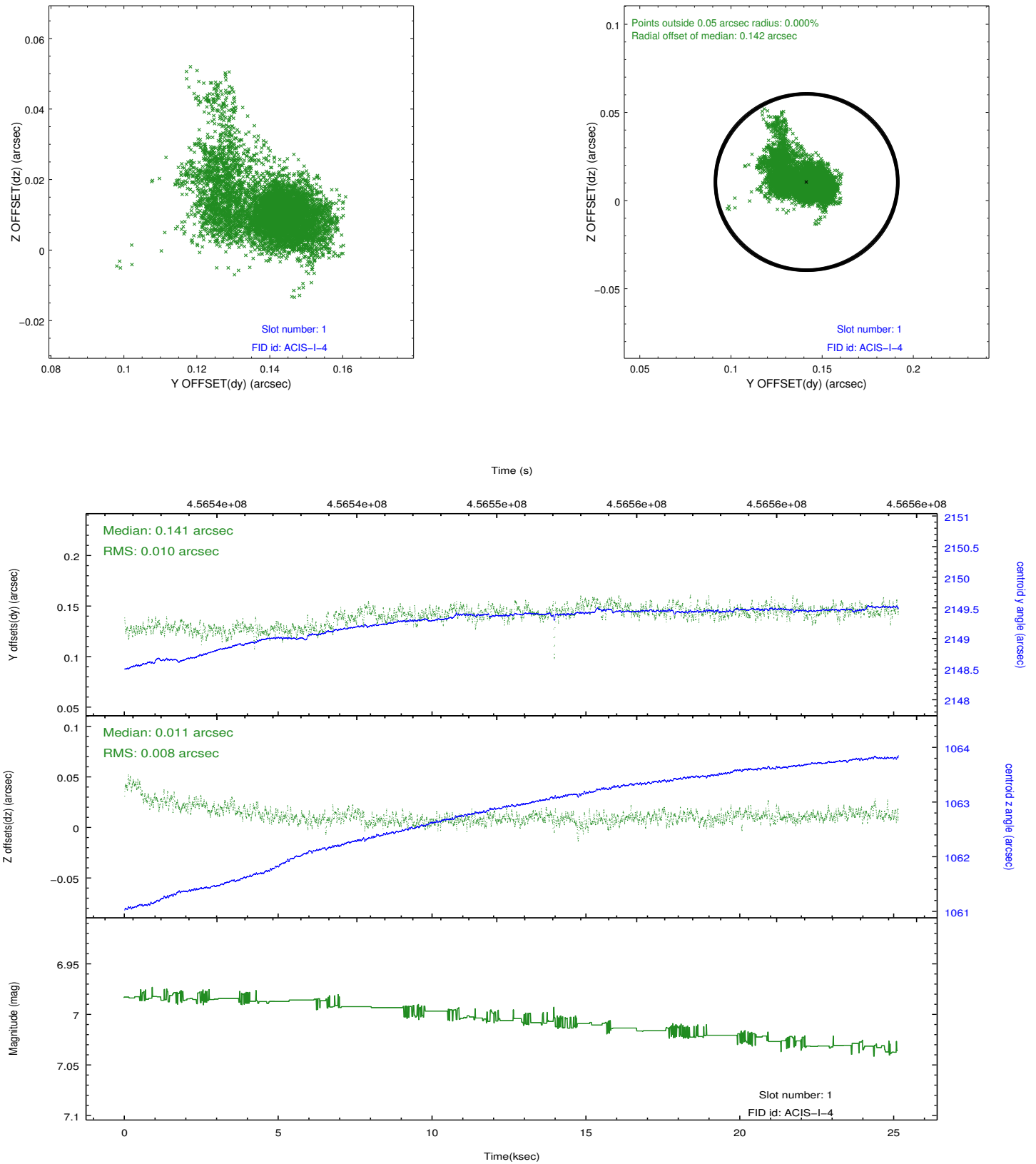


2.5 FID Slots

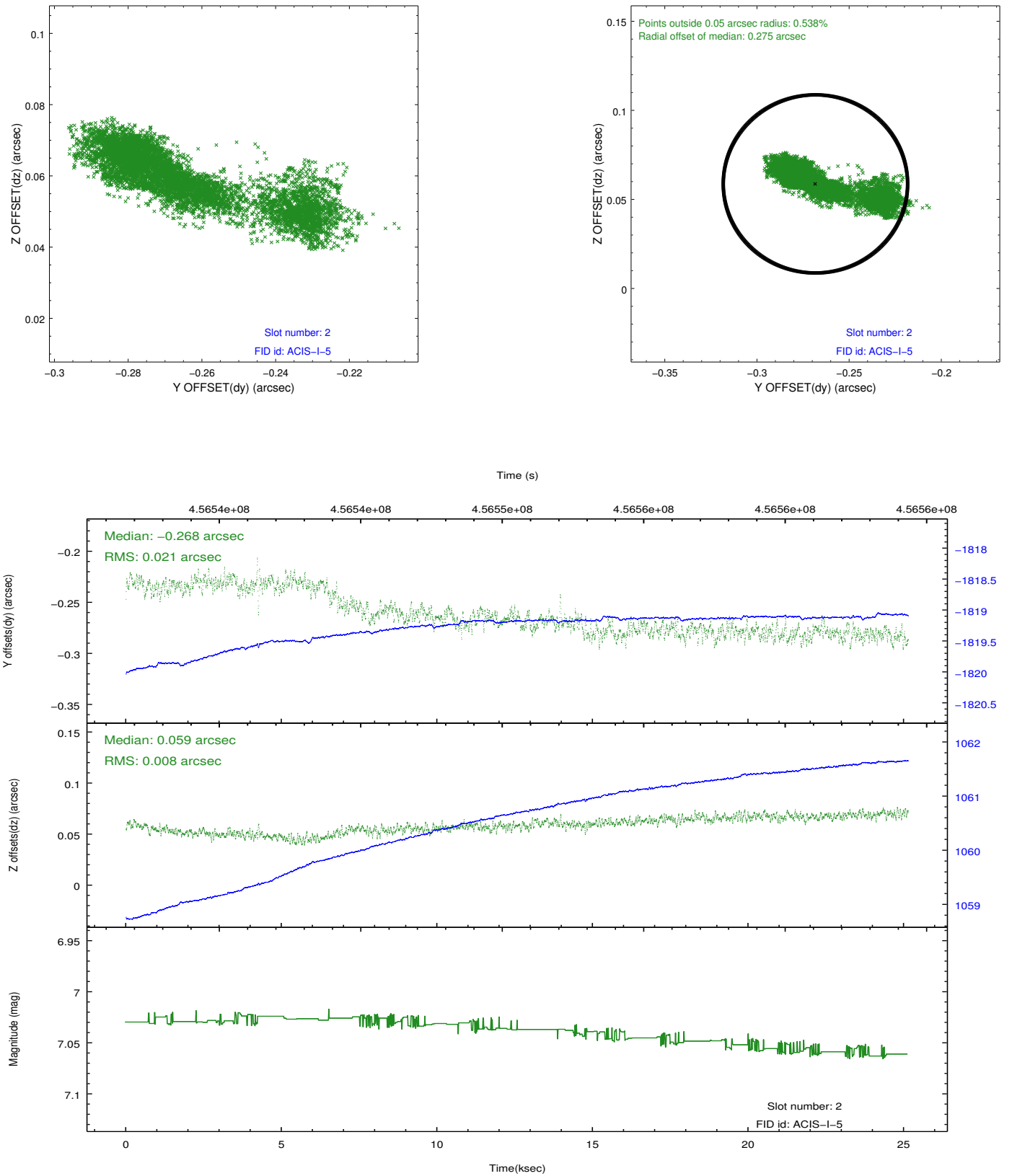
2.5.1 Slot 0



2.5.2 Slot 1



2.5.3 Slot 2



A Summary

A.1 Status

V&V Scientist	Jen Lauer
V&V Date (YYYY-MM-DD)	2012.06.20
V&V Edition	1
V&V Disposition and Status	OK
V&V Charge Time	25.075153080702

A.2 Comments