

V&V Reference Report

L2 ASCDS Version : 8.4.4

Observation 14359 - L2 Version 1
Chandra X-Ray Center

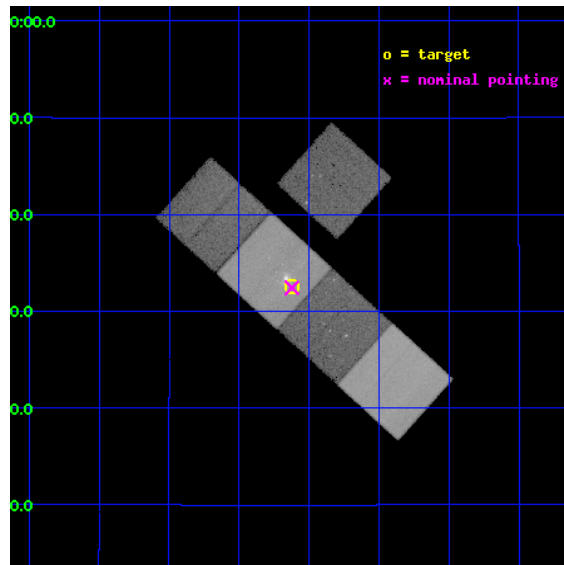
L2 Processing Date : Apr 24 2012

Contents

1	Front	2
2	OBI	3
2.1	OBI	3
2.1.1	Images	3
2.1.2	Bias	3
2.1.3	Parameters	4
2.1.4	Events	4
2.2	Compared Parameters	5
2.3	Aspect	6
2.4	Star Slots	9
2.4.1	Slot 3	9
2.4.2	Slot 4	10
2.4.3	Slot 5	11
2.4.4	Slot 6	12
2.4.5	Slot 7	13
2.5	FID Slots	14
2.5.1	Slot 0	14
2.5.2	Slot 1	15
2.5.3	Slot 2	16
A	Summary	17
A.1	Status	17
A.2	Comments	17

1 Front

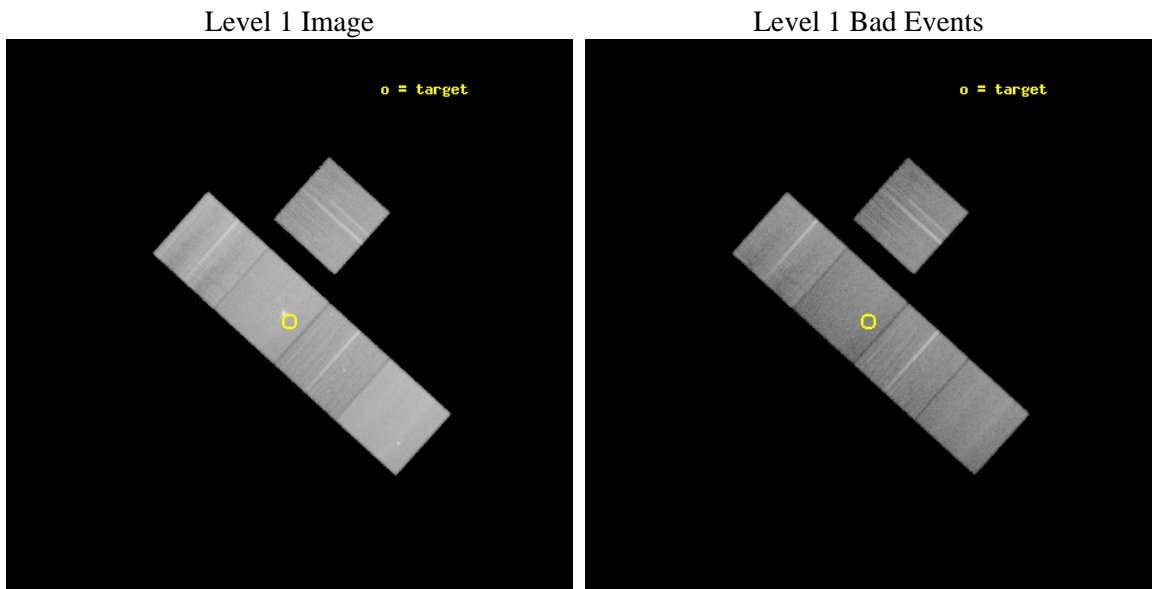
seq_num	801165	Sequence number
obs_id	14359	Observation id
title	Particle Acceleration at a Strong Shock - A Deep Chandra Observation of NGC 4552	Proposal title
observer	Dr. Ralph Kraft	Principal investigator
object	NGC 4552	Source name
dtcycle	0	
cycle	P	events from which exps? Prim/Second/Both
ra_targ	188.90519	Observer's specified target RA [deg]
dec_targ	12.543543	Observer's specified target Dec [deg]
ra_nom	188.90571703376	Nominal RA [deg]
dec_nom	12.540560504716	Nominal Dec [deg]
roll_nom	222.11739028558	Nominal Roll [deg]
revision	1	Processing version of data
ontime	48772.300375104	Sum of GTIs [s]
livetime	48135.054365058	Livetime [s]
ontime3	48769.159324706	Sum of GTIs [s]
ontime5	48772.300375104	Sum of GTIs [s]
ontime6	48772.300375104	Sum of GTIs [s]
ontime7	48772.300375104	Sum of GTIs [s]
ontime8	48750.313043296	Sum of GTIs [s]
l2events	497949	Number of level 2 events



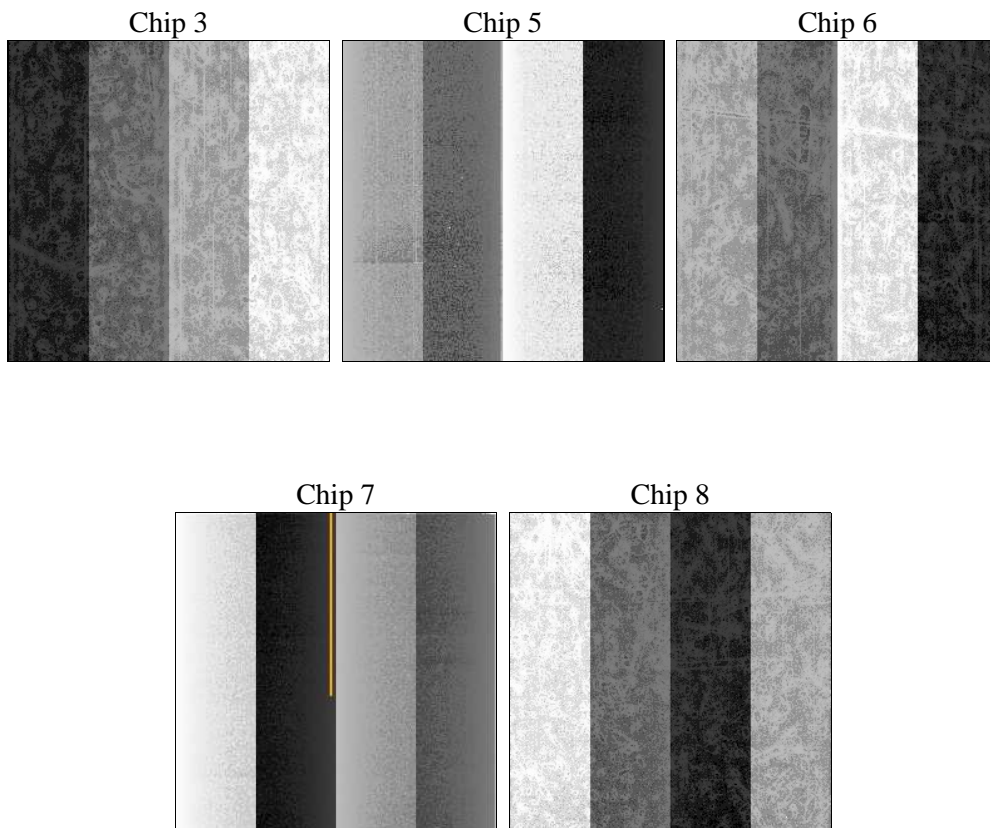
2 OBI

2.1 OBI

2.1.1 Images



2.1.2 Bias



2.1.3 Parameters

obi_num	0	Obi number	sched_exp_time	49000.000000	[s] Scheduled observation exposure time
ascdsver	8.4.4	Processing system revision	ontime	48772.300375104	Sum of GTIs [s]
caldsver	4.4.9	 	ontime3	48769.159324706	Sum of GTIs [s]
date	2012-04-24T03:59:20	Date and time of file creation	ontime5	48772.300375104	Sum of GTIs [s]
revision	1	Processing version of data	ontime6	48772.300375104	Sum of GTIs [s]
			ontime7	48772.300375104	Sum of GTIs [s]
			ontime8	48750.313043296	Sum of GTIs [s]
			l1events	1837633	Number of level 1 events

2.1.4 Events

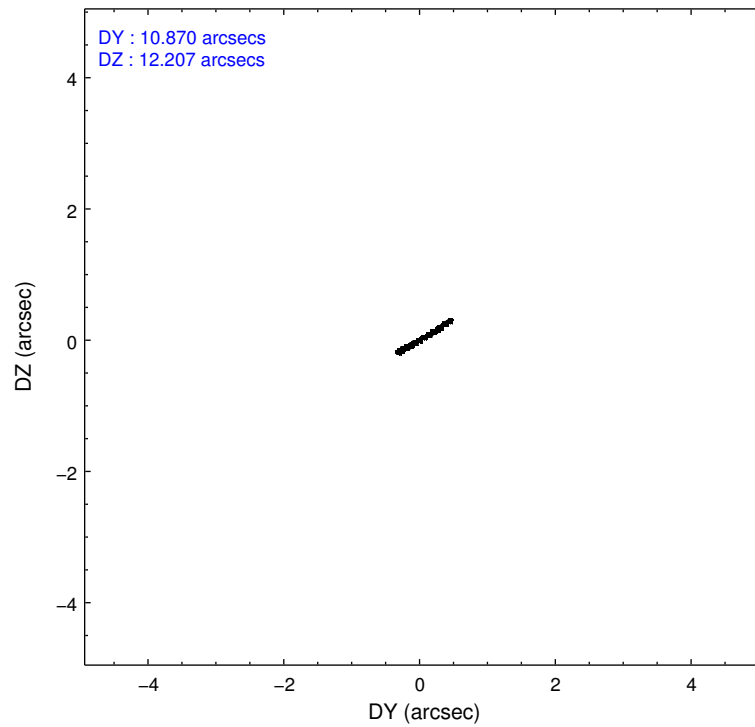
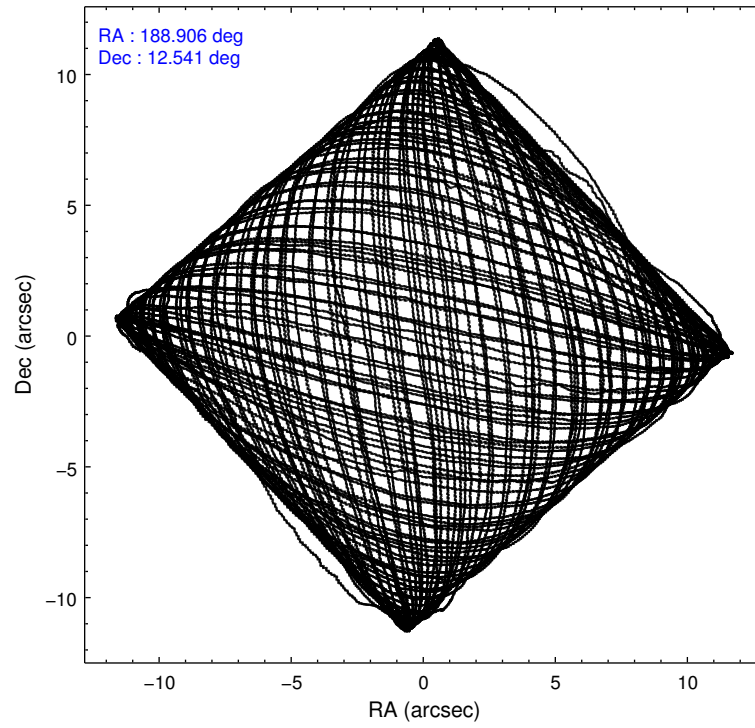
	ccd 3	ccd 5	ccd 6	ccd 7	ccd 8
level 1 events	287055	463555	301635	399912	385476
rejected events	253649	241194	262632	215151	285830
rejected %	88%	52%	87%	53%	74%

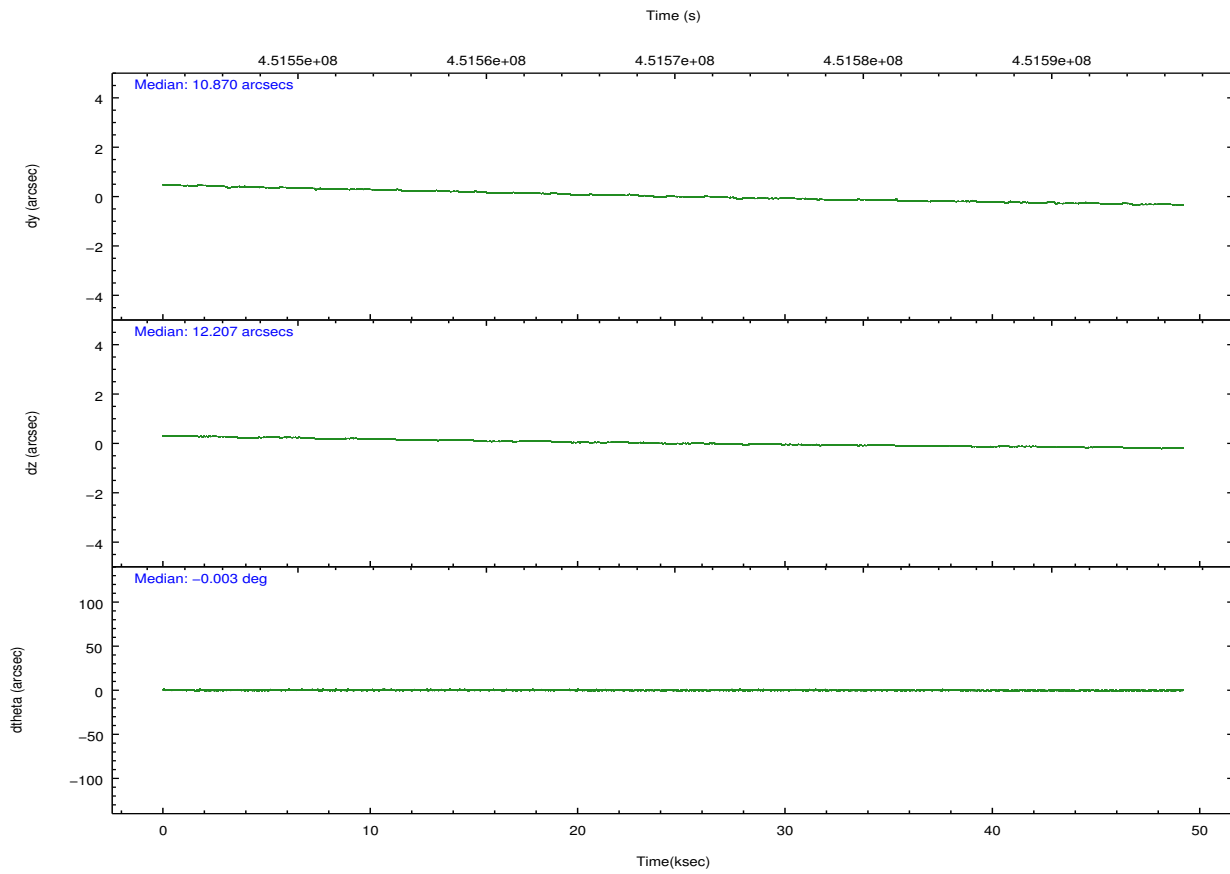
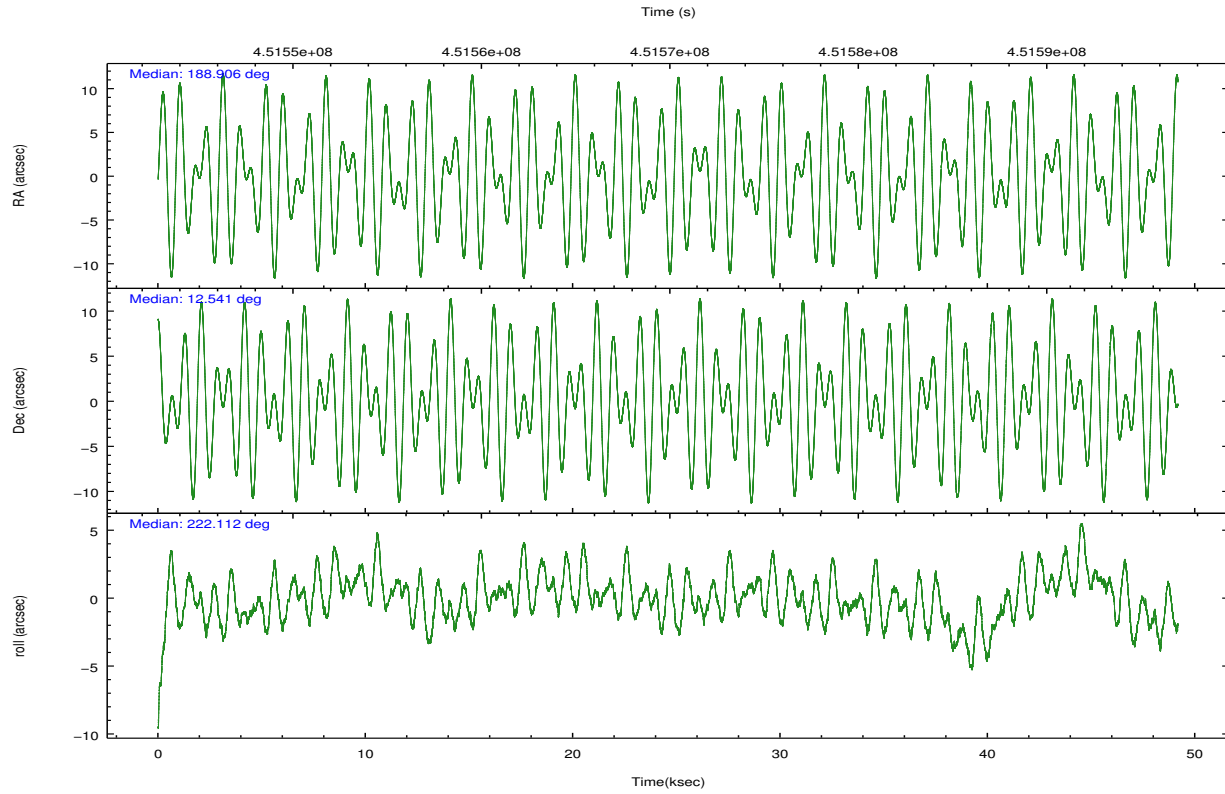
	ccd 3	ccd 5	ccd 6	ccd 7	ccd 8
grade 0 events	13153	14127	15833	20676	29149
	4%	3%	5%	5%	7%
grade 1 events	204	742	176	436	300
	0%	0%	0%	0%	0%
grade 2 events	6885	68194	7981	38656	23515
	2%	14%	2%	9%	6%
grade 3 events	3461	8821	3588	16256	10524
	1%	1%	1%	4%	2%
grade 4 events	3522	7503	3620	16109	9800
	1%	1%	1%	4%	2%
grade 5 events	14248	32975	14341	38884	20605
	4%	7%	4%	9%	5%
grade 6 events	6387	123731	7985	93090	26661
	2%	26%	2%	23%	6%
grade 7 events	239195	207462	248111	175805	264922
	83%	44%	82%	43%	68%

2.2 Compared Parameters

Parameter	Planned	Actual	Parameter	Planned	Actual
Instrument	ACIS	ACIS	Obspar format version number	7	7
Detector	ACIS-35678	ACIS-35678	Obspar file type	PREDICTED	ACTUAL
Grating	NONE	NONE	Obspar update status	NONE	UPDATED
Data mode	VFAINT	VFAINT	CCD I0 on	N	N
Observation mode	POINTING	POINTING	CCD I1 on	N	N
[deg] Pointing RA	188.913948	188.9057170337581	CCD I2 on	N	N
[deg] Pointing Dec	12.566697	12.54056050471595	CCD I3 on	O1	Y
[deg] Pointing Roll	221.958980	222.1173902855834	CCD S0 on	N	N
[mm] SIM focus pos	-0.684267	-0.6828225247311905	CCD S1 on	Y	Y
[mm] SIM defocus	0	0.001444936568705701	CCD S2 on	Y	Y
[mm] SIM translation stage pos	-190.132523	-190.1400660498719	CCD S3 on	Y	Y
[mm] SIM translation stage offset	0	0.00754346686406393	CCD S4 on	Y	Y
[s] Observation start time (MET)	451545504.184000	451545127.90137	CCD S5 on	N	N
Observation start date	2012-04-23T05:17:18	2012-04-23T05:12:07	Number of optional ACIS chips dropped	0	0
[s] Observation end time (MET)	451594504.184000	451594905.49151	On-chip summing requested	N	N
Observation end date	2012-04-23T18:53:58	2012-04-23T19:01:45	Subarray requested	NONE	NONE
Read mode	TIMED	TIMED	Alternating exposures requested	N	N
			[s] Primary exposure time	0.000000	3.1

2.3 Aspect



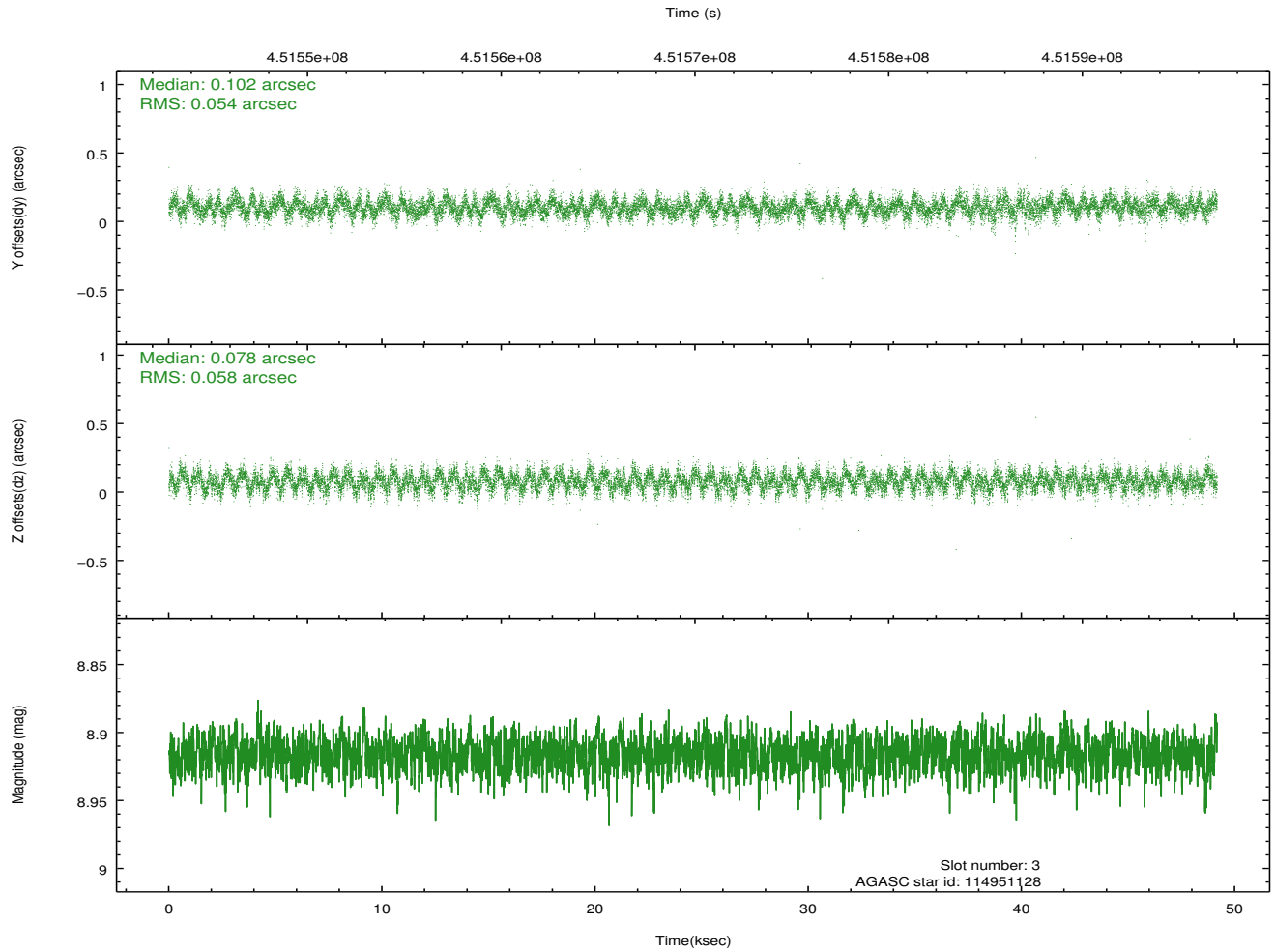
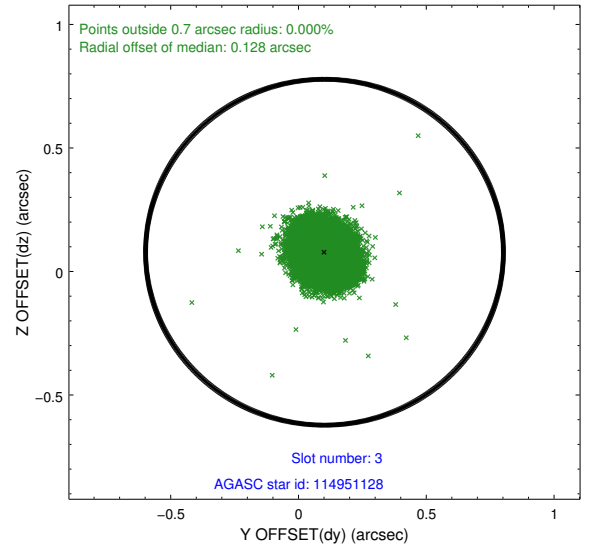
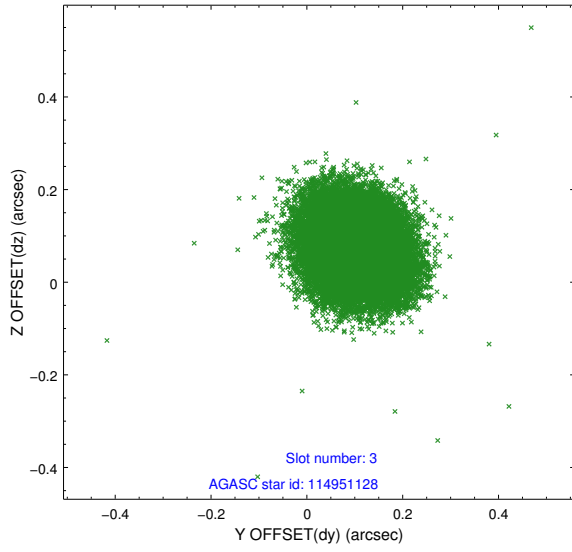


Slot Statistics

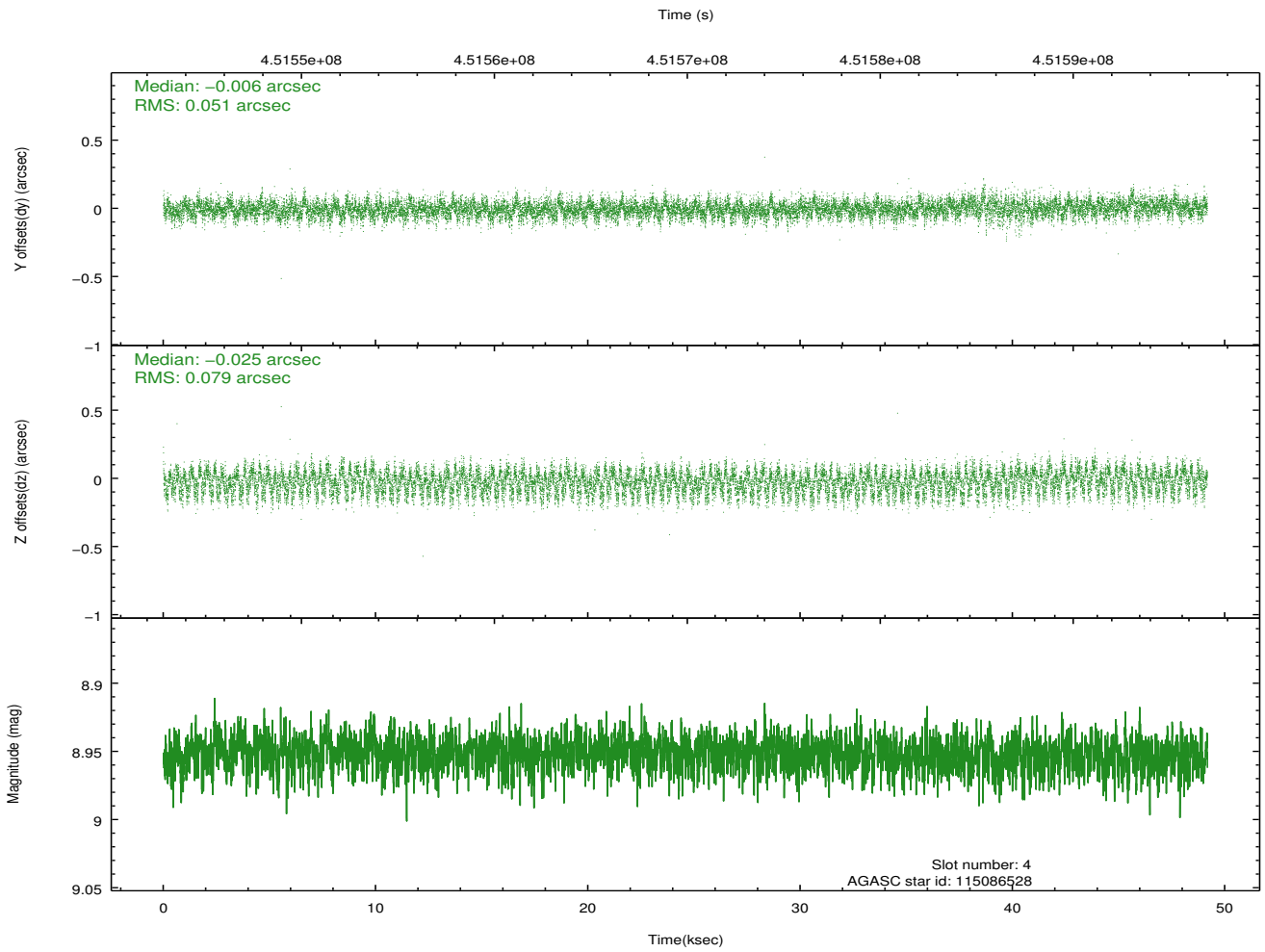
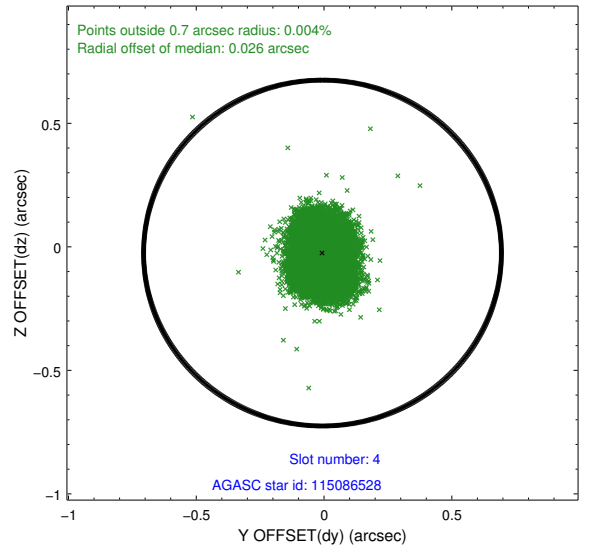
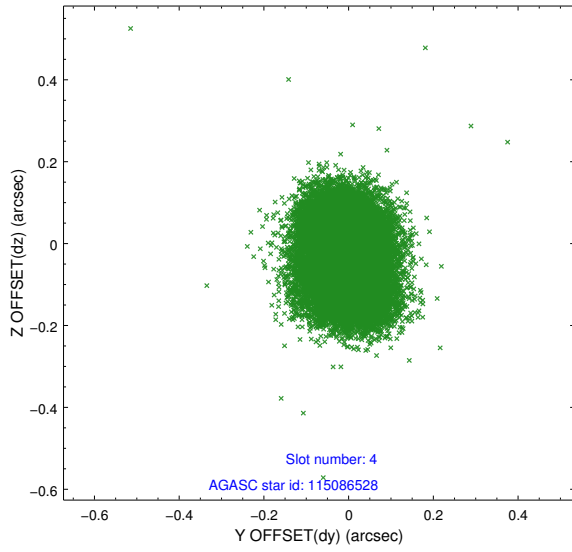
slot	status	id	mag	n_pts	med_dy	med_dz	dr1	dr2	ra	dec	mean_y	mean_z
0	FID	ACIS-S-2	7.04	11994	-0.062	-0.048	0.010	0.016	0.000000	0.000000	-763.84	-1733.57
1	FID	ACIS-S-4	7.13	11993	0.198	0.042	0.010	0.026	0.000000	0.000000	2149.73	174.98
2	FID	ACIS-S-5	7.16	11995	-0.169	0.014	0.010	0.017	0.000000	0.000000	-1816.79	168.65
3	GUIDE	114951128	8.92	23977	0.102	0.078	0.085	0.135	188.719863	12.459246	766.59	-167.45
4	GUIDE	115086528	8.95	23939	-0.006	-0.025	0.101	0.160	189.286111	12.182164	-48.81	1904.71
5	GUIDE	115349088	9.27	23972	0.067	-0.091	0.149	0.249	188.777694	12.938966	-539.72	-1316.67
6	GUIDE	115481912	8.58	23981	-0.008	-0.191	0.088	0.143	189.408526	12.669552	-1540.31	884.74
7	GUIDE	115482272	8.15	23983	-0.156	0.244	0.059	0.096	189.342268	12.983616	-2121.47	-112.32

2.4 Star Slots

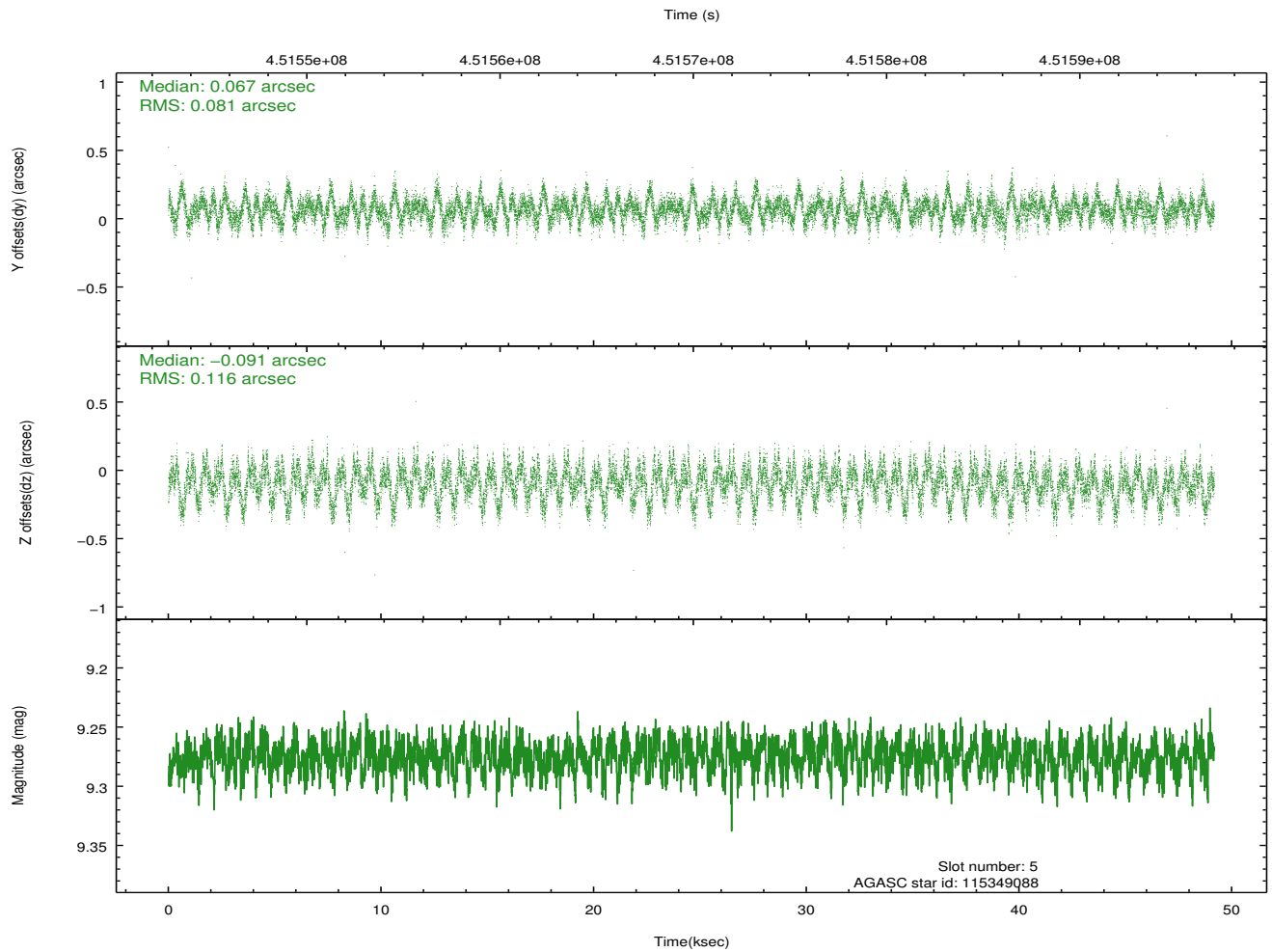
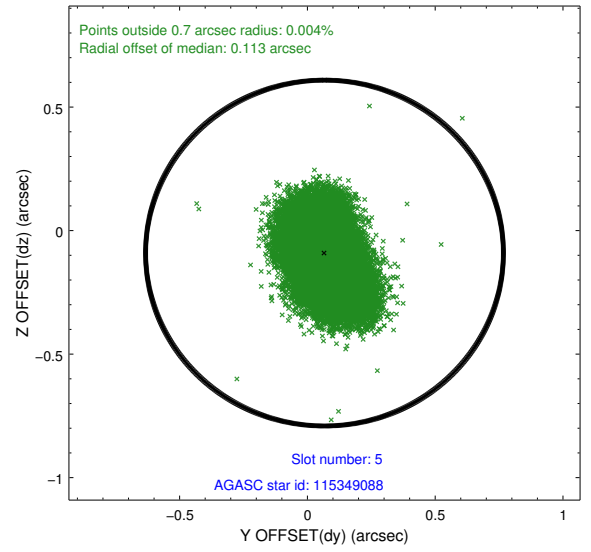
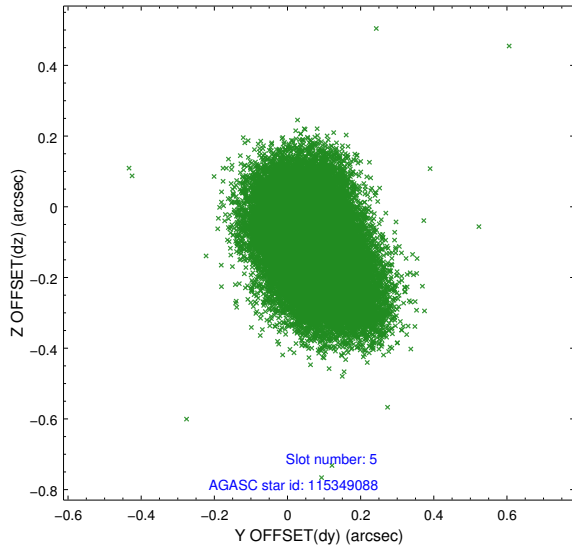
2.4.1 Slot 3



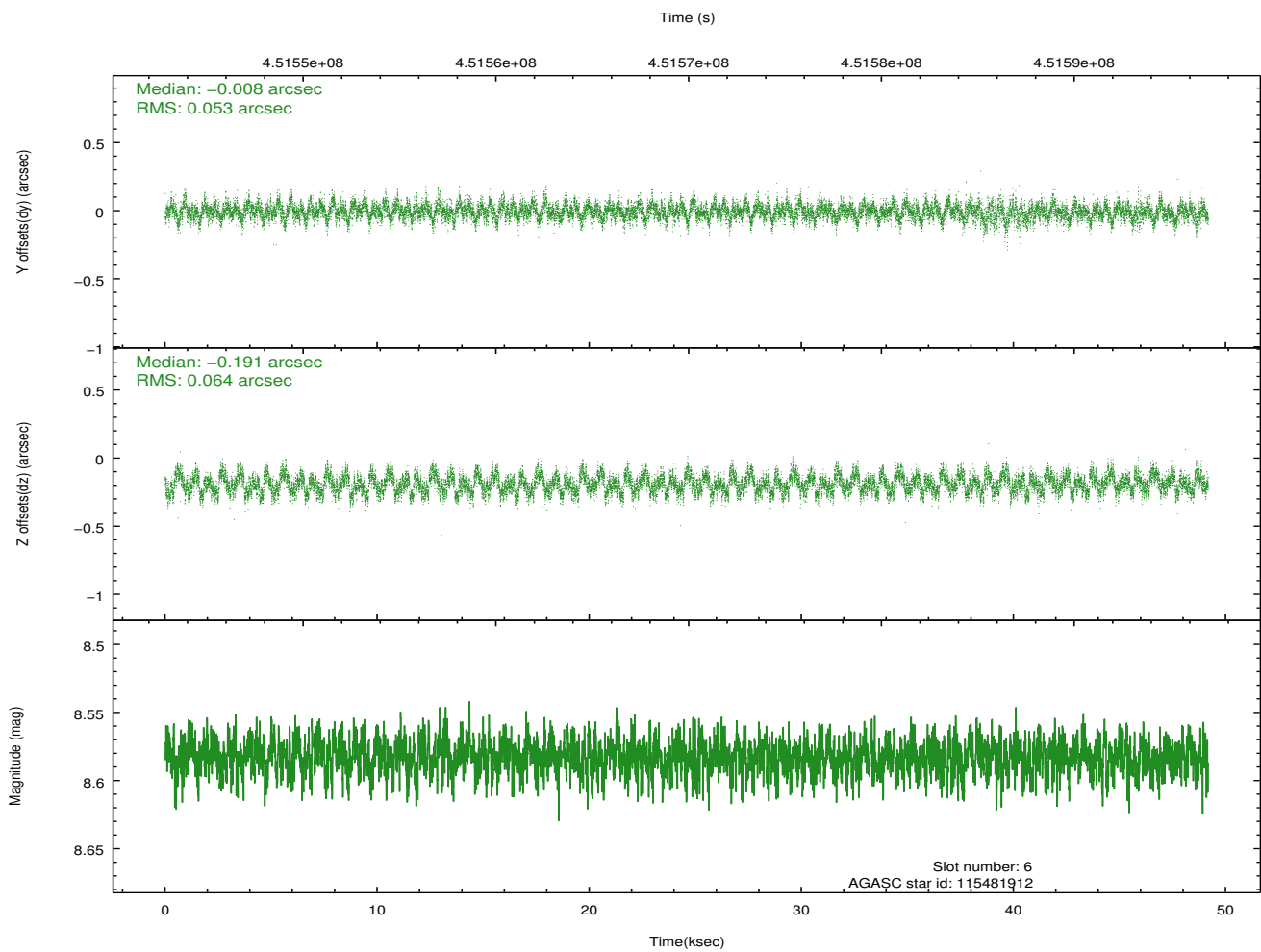
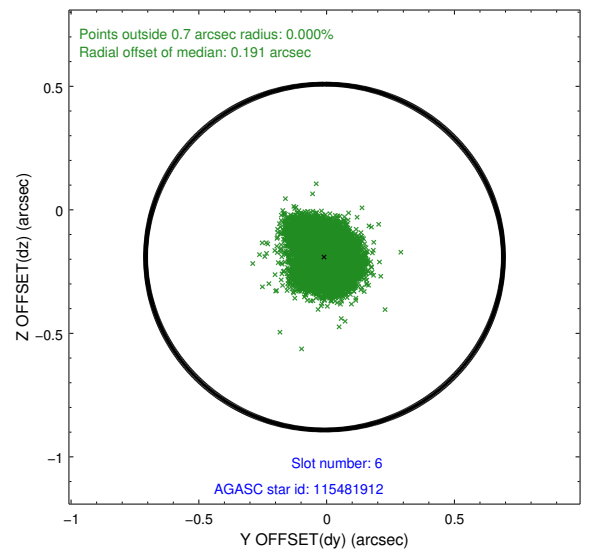
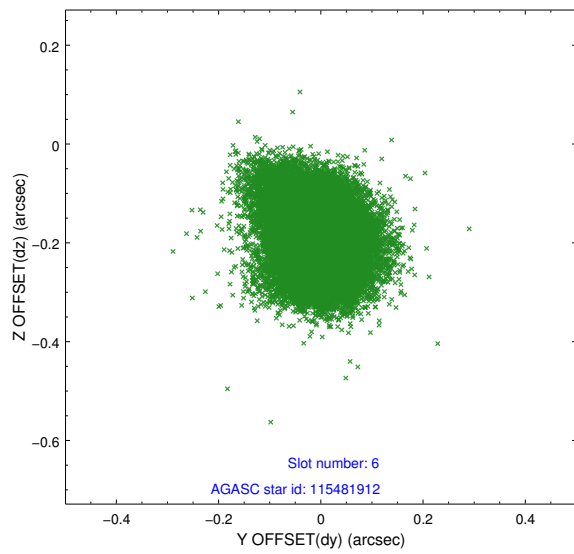
2.4.2 Slot 4



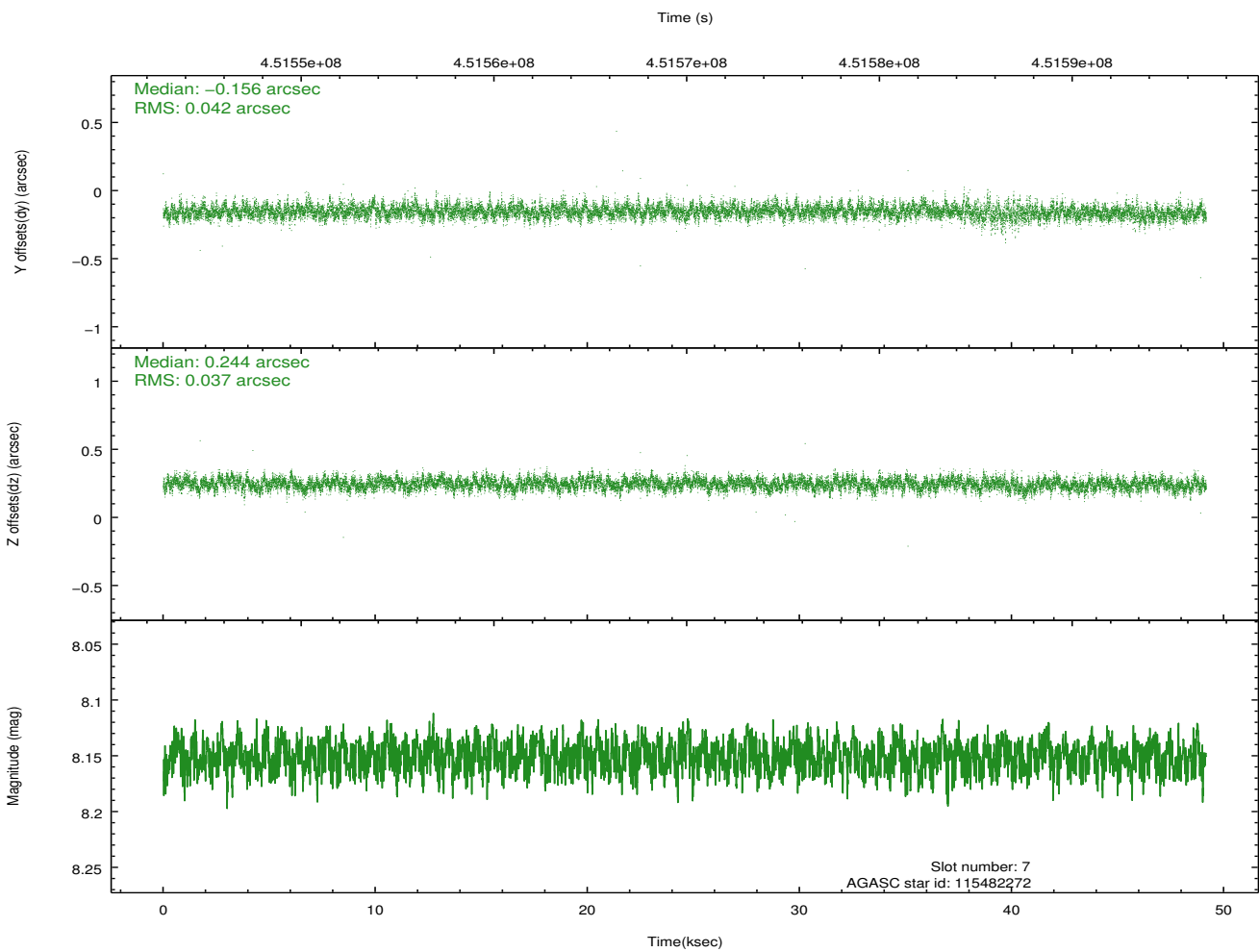
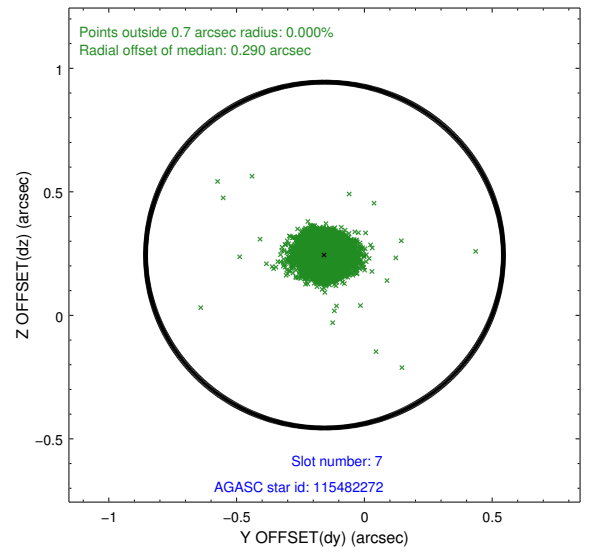
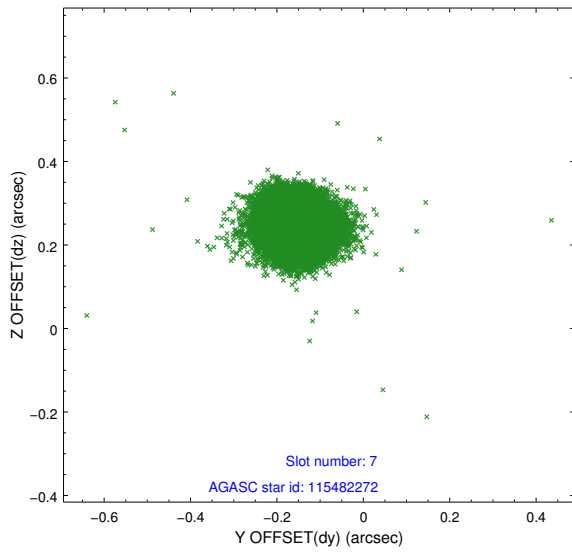
2.4.3 Slot 5



2.4.4 Slot 6

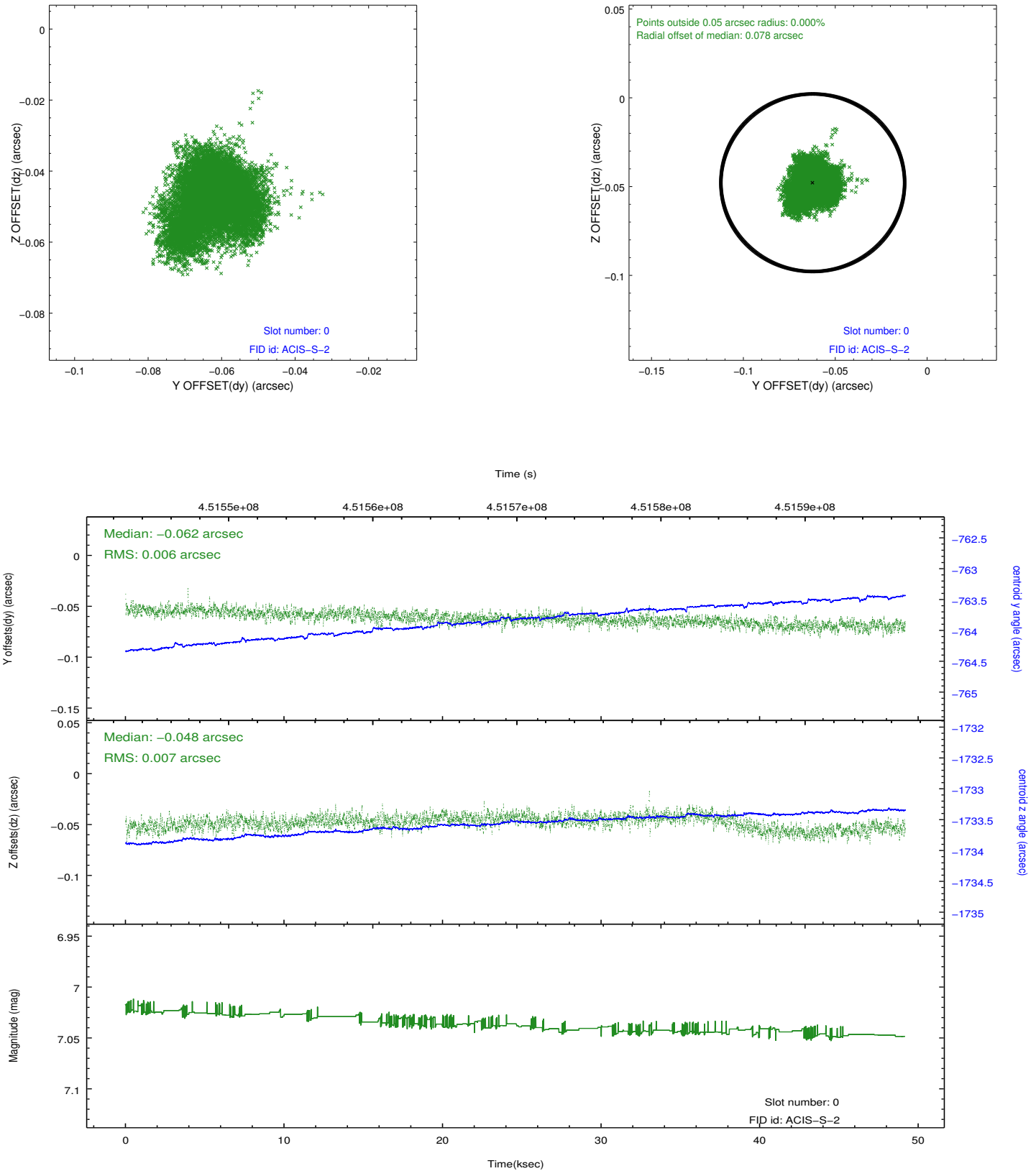


2.4.5 Slot 7

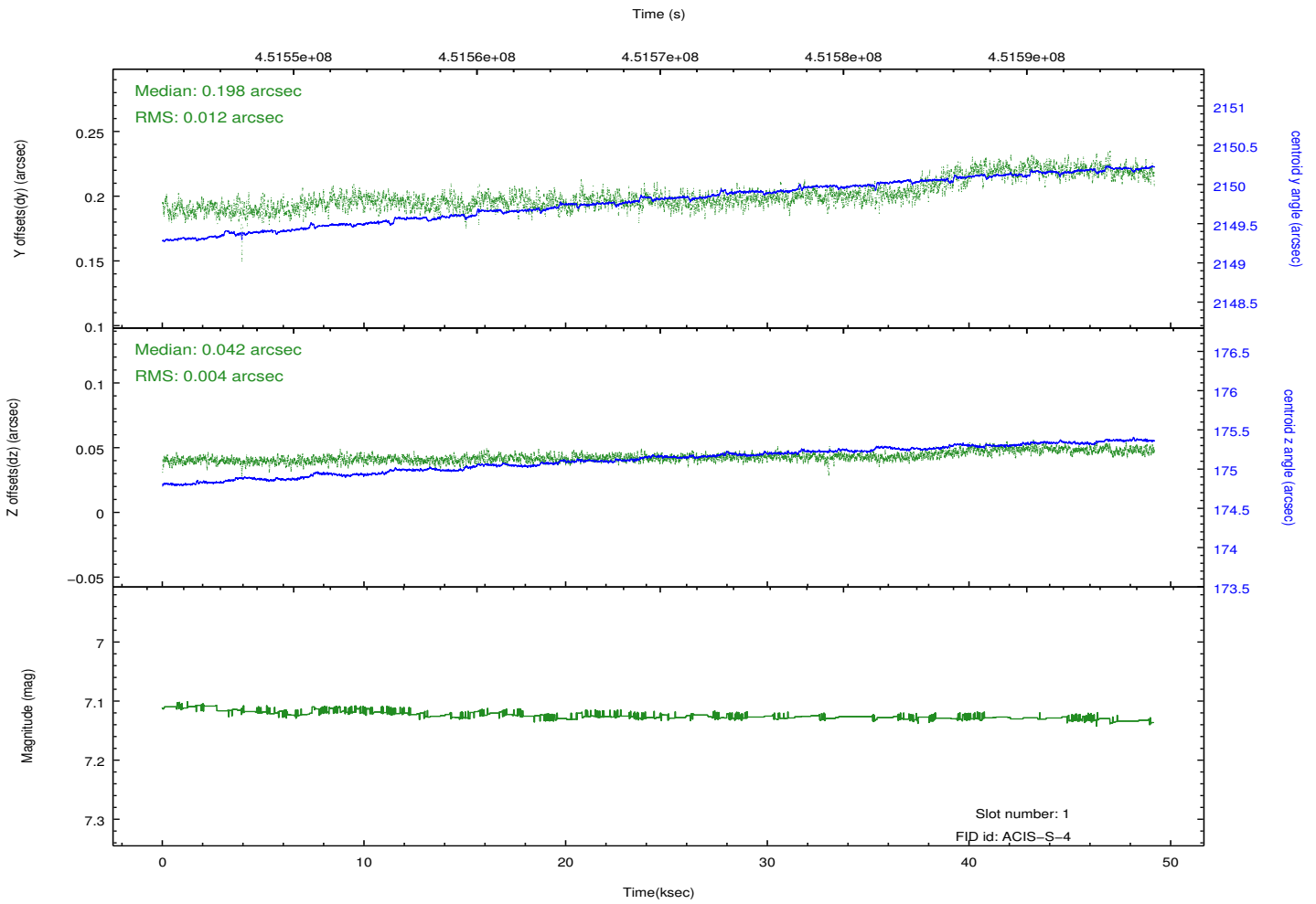
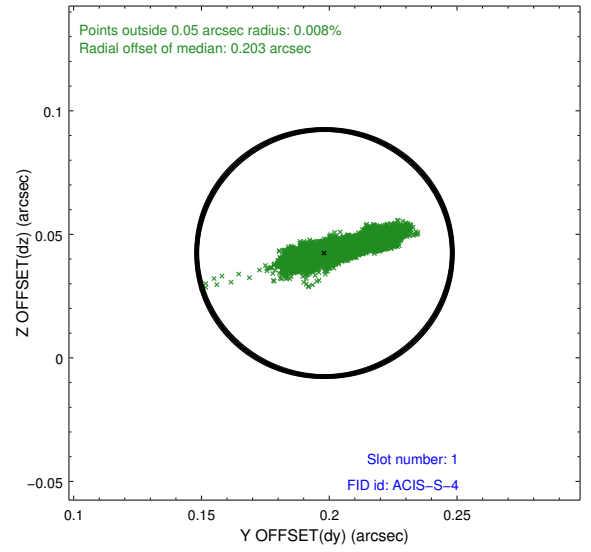
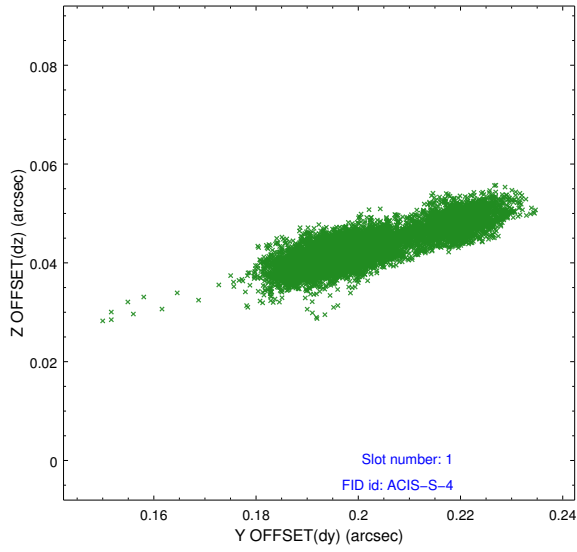


2.5 FID Slots

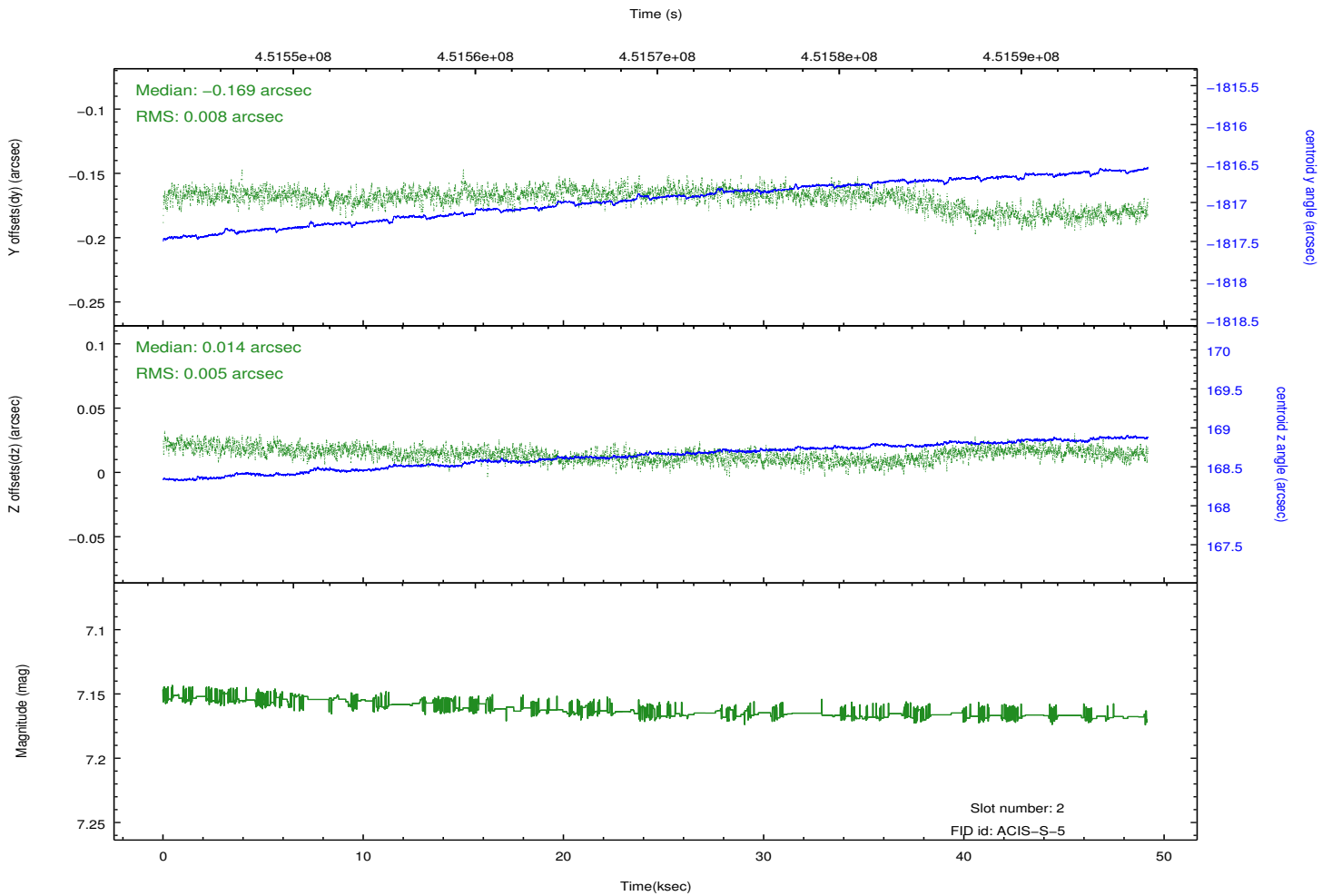
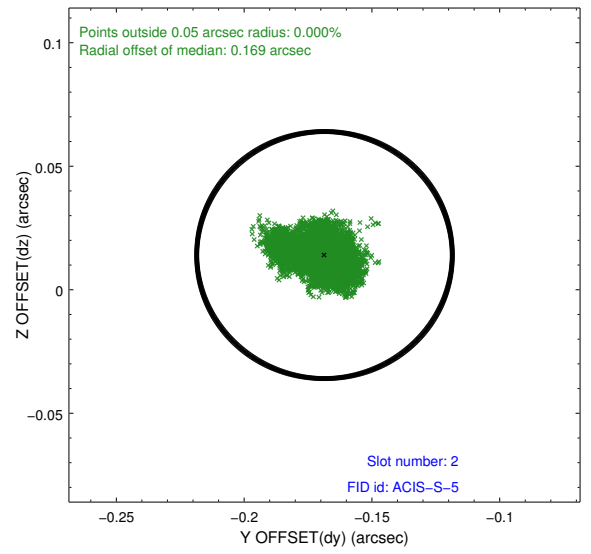
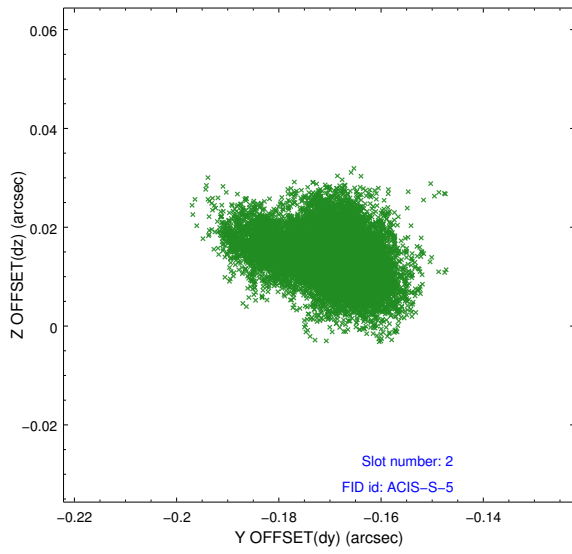
2.5.1 Slot 0



2.5.2 Slot 1



2.5.3 Slot 2



A Summary

A.1 Status

V&V Scientist	Joy Nichols
V&V Date (YYYY-MM-DD)	2012.04.24
V&V Edition	1
V&V Disposition and Status	OK
V&V Charge Time	48.772300375104

A.2 Comments