

V&V Reference Report

L2 ASCDS Version : 8.4.5

Observation 14389 - L2 Version 1
Chandra X-Ray Center

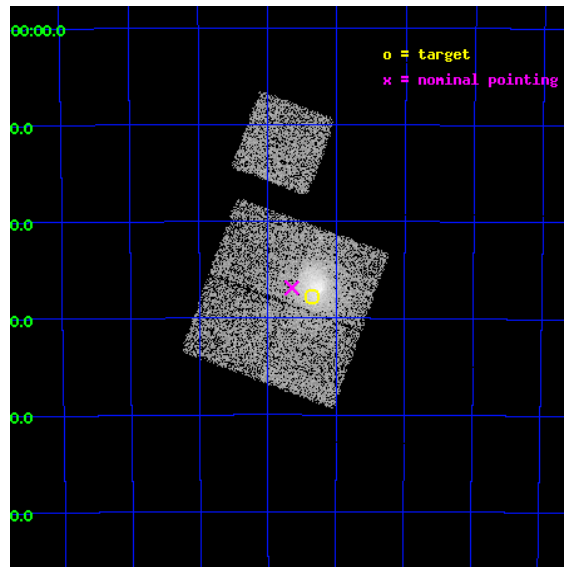
L2 Processing Date : Jun 11 2012

Contents

1	Front	2
2	OBI	3
2.1	OBI	3
2.1.1	Images	3
2.1.2	Bias	3
2.1.3	Parameters	4
2.1.4	Events	4
2.2	Compared Parameters	5
2.3	Aspect	6
2.4	Star Slots	9
2.4.1	Slot 3	9
2.4.2	Slot 4	10
2.4.3	Slot 5	11
2.4.4	Slot 6	12
2.4.5	Slot 7	13
2.5	FID Slots	14
2.5.1	Slot 0	14
2.5.2	Slot 1	15
2.5.3	Slot 2	16
A	Summary	17
A.1	Status	17
A.2	Comments	17

1 Front

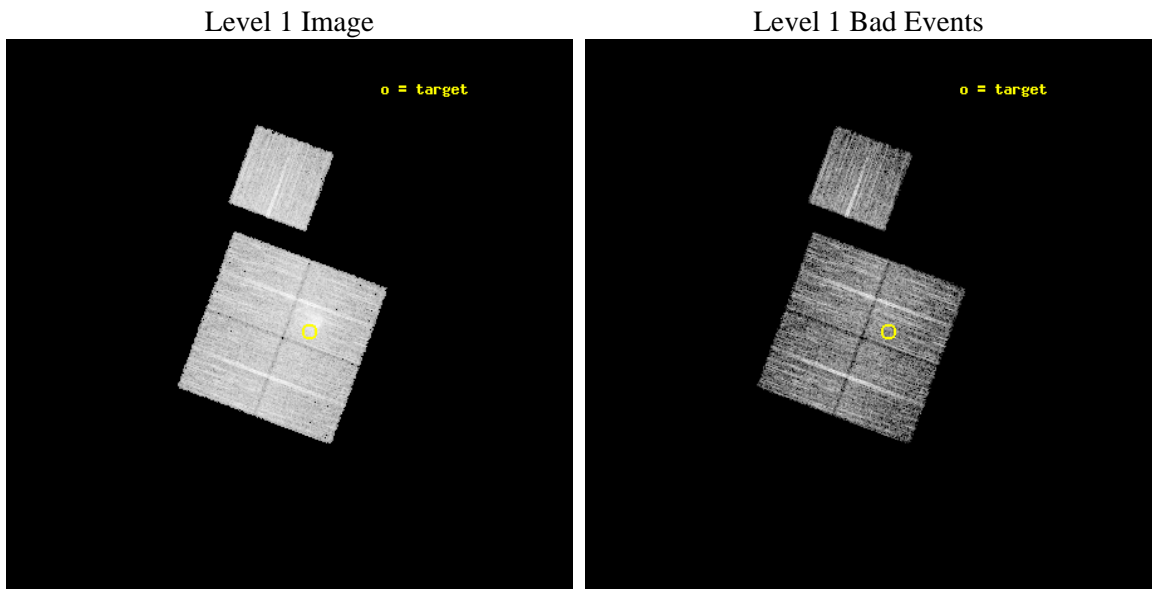
seq_num	801214	Sequence number
obs_id	14389	Observation id
title	Characterizing the Most Massive Clusters in the Local Universe - B	
observer	Dr. Stephen Murray	Principal investigator
object	G332.88-19.28	Source name
dtcycle	0	
cycle	P	events from which exps? Prim/Second/Both
ra_targ	273.339583	Observer's specified target RA [deg]
dec_targ	-61.463333	Observer's specified target Dec [deg]
ra_nom	273.41194792563	Nominal RA [deg]
dec_nom	-61.448142142569	Nominal Dec [deg]
roll_nom	20.236746171572	Nominal Roll [deg]
revision	1	Processing version of data
ontime	8983.7838935852	Sum of GTIs [s]
livetime	8866.40414325	Livetime [s]
ontime0	8983.6607735753	Sum of GTIs [s]
ontime1	8983.7018135786	Sum of GTIs [s]
ontime2	8983.7428535819	Sum of GTIs [s]
ontime3	8983.7838935852	Sum of GTIs [s]
ontime6	8983.619733572	Sum of GTIs [s]
l2events	36591	Number of level 2 events



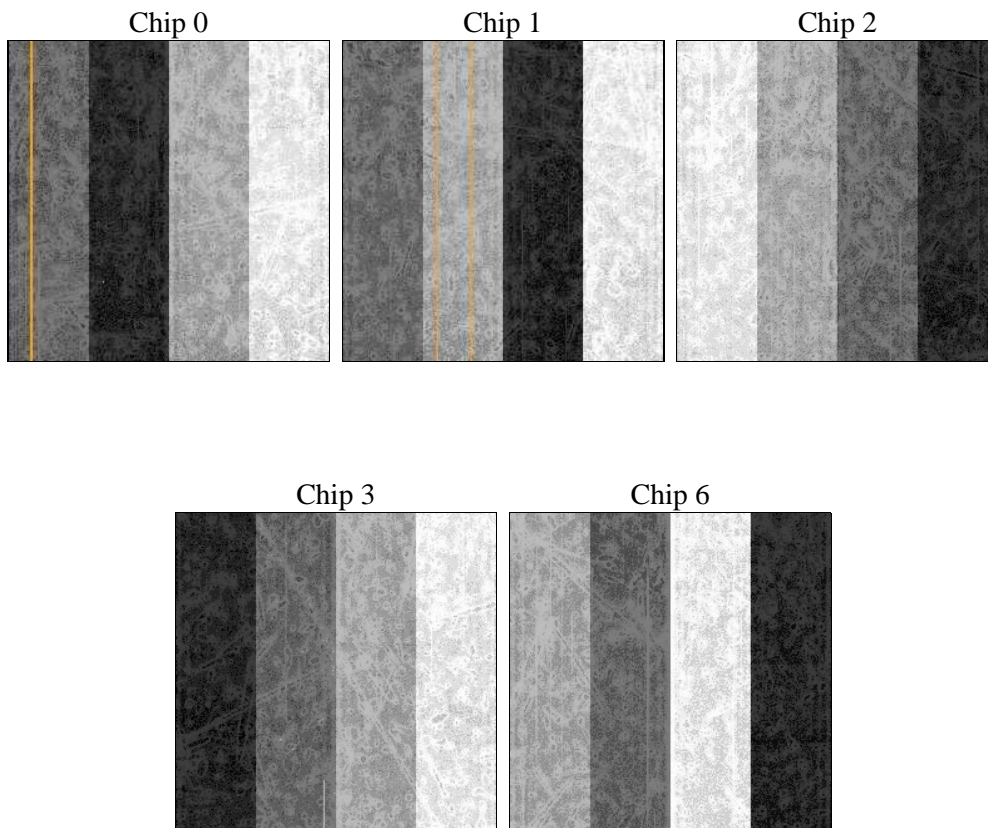
2 OBI

2.1 OBI

2.1.1 Images



2.1.2 Bias



2.1.3 Parameters

obi_num	0	Obi number	sched_exp_time	8902.934000	[s] Scheduled observation exposure time
ascdsver	8.4.5	Processing system revision	ontime	8983.7838935852	Sum of GTIs [s]
caldsver	4.4.10	 	ontime0	8983.6607735753	Sum of GTIs [s]
date	2012-06-11T22:40:48	Date and time of file creation	ontime1	8983.7018135786	Sum of GTIs [s]
revision	1	Processing version of data	ontime2	8983.7428535819	Sum of GTIs [s]
			ontime3	8983.7838935852	Sum of GTIs [s]
			ontime6	8983.619733572	Sum of GTIs [s]
			l1events	254279	Number of level 1 events

2.1.4 Events

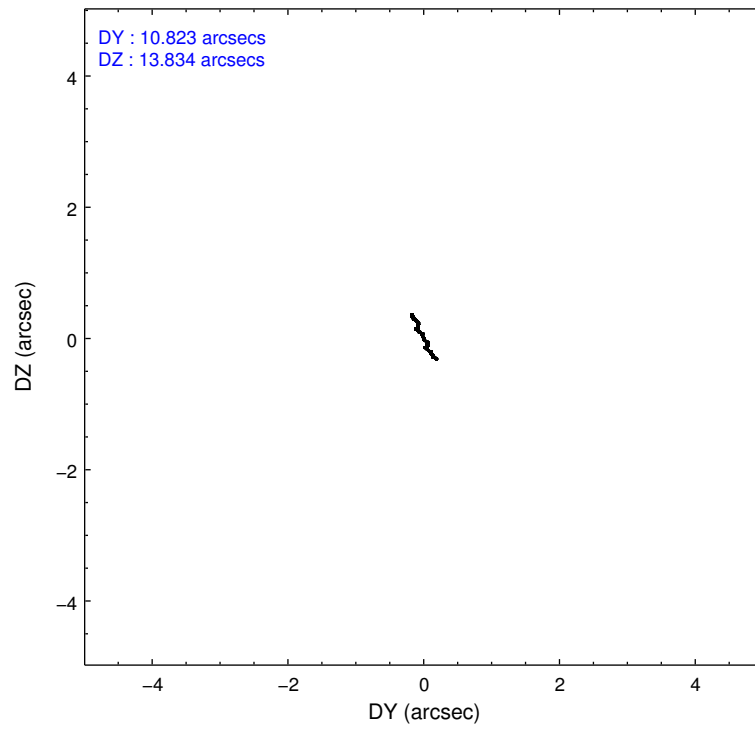
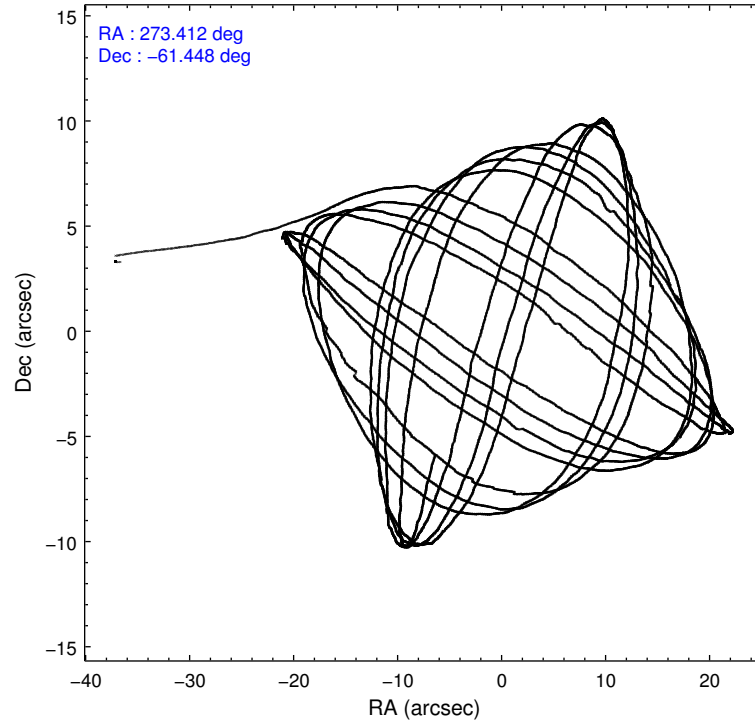
	ccd 0	ccd 1	ccd 2	ccd 3	ccd 6
level 1 events	46157	46515	51490	59540	50577
rejected events	40023	39192	44991	44056	44383
rejected %	86%	84%	87%	73%	87%

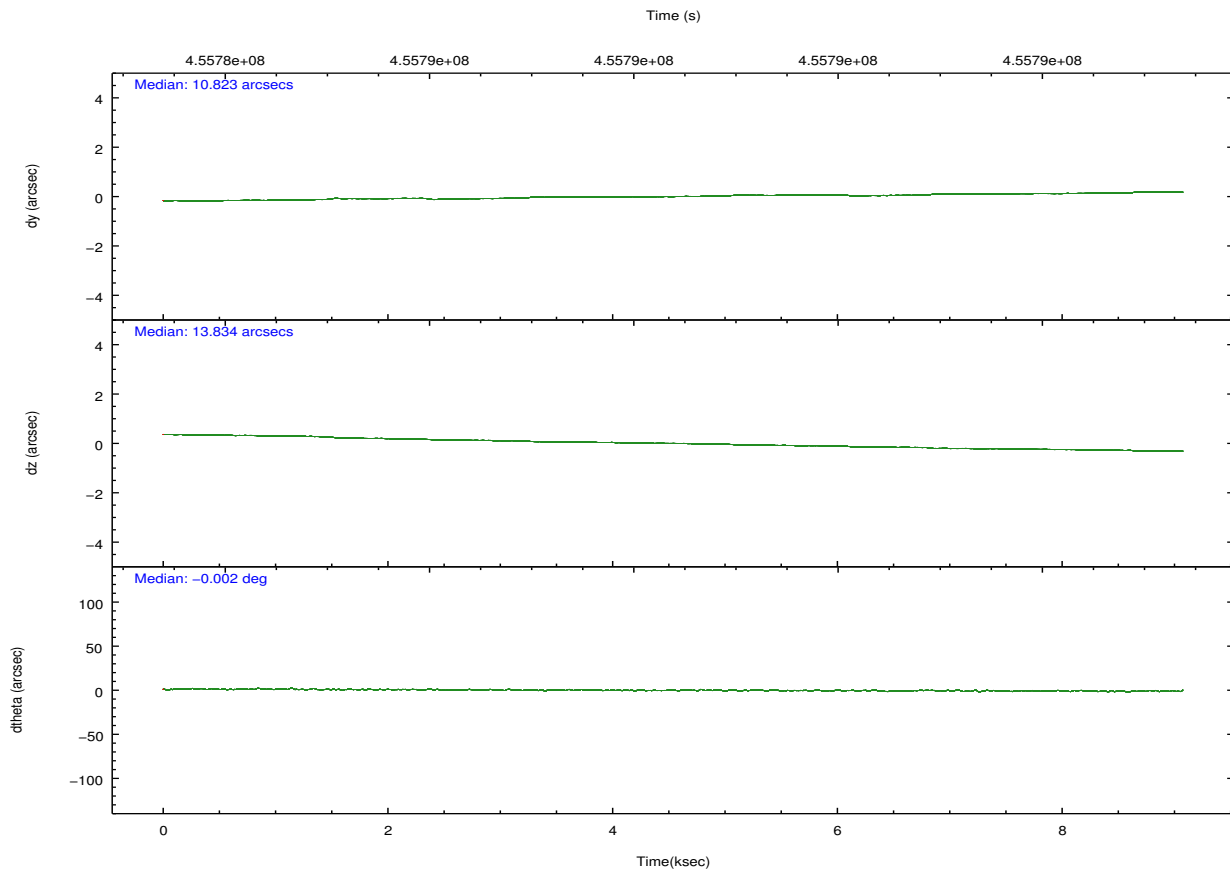
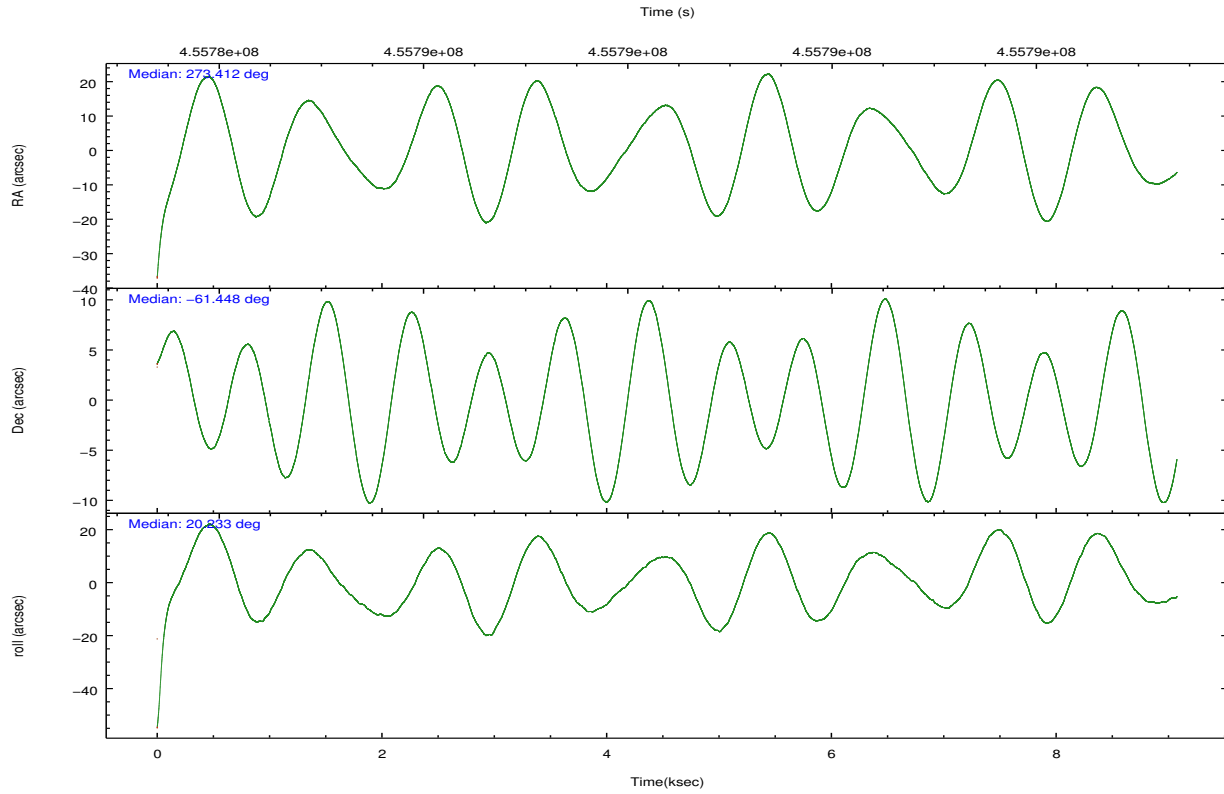
	ccd 0	ccd 1	ccd 2	ccd 3	ccd 6
grade 0 events	2313	2926	2660	10077	2245
	5%	6%	5%	16%	4%
grade 1 events	31	28	38	70	28
	0%	0%	0%	0%	0%
grade 2 events	1443	1667	1519	2194	1365
	3%	3%	2%	3%	2%
grade 3 events	605	656	572	902	655
	1%	1%	1%	1%	1%
grade 4 events	596	668	622	874	587
	1%	1%	1%	1%	1%
grade 5 events	2221	2500	2201	2603	2445
	4%	5%	4%	4%	4%
grade 6 events	1180	1409	1130	1449	1344
	2%	3%	2%	2%	2%
grade 7 events	37768	36661	42748	41371	41908
	81%	78%	83%	69%	82%

2.2 Compared Parameters

Parameter	Planned	Actual	Parameter	Planned	Actual
Instrument	ACIS	ACIS	Obspar format version number	7	7
Detector	ACIS-01236	ACIS-01236	Obspar file type	PREDICTED	ACTUAL
Grating	NONE	NONE	Obspar update status	NONE	UPDATED
Data mode	VFAINT	VFAINT	CCD I0 on	Y	Y
Observation mode	POINTING	POINTING	CCD I1 on	Y	Y
[deg] Pointing RA	273.375359	273.4119479256314	CCD I2 on	Y	Y
[deg] Pointing Dec	-61.469344	-61.44814214256866	CCD I3 on	Y	Y
[deg] Pointing Roll	19.995950	20.23674617157196	CCD S0 on	N	N
[mm] SIM focus pos	-0.782348	-0.7809083437167272	CCD S1 on	N	N
[mm] SIM defocus	0	0.001439871863259334	CCD S2 on	O1	Y
[mm] SIM translation stage pos	-230.592463	-230.5903706213692	CCD S3 on	N	N
[mm] SIM translation stage offset	-3	-3.002082381560513	CCD S4 on	N	N
[s] Observation start time (MET)	455784013.184000	455782619.57293	CCD S5 on	N	N
Observation start date	2012-06-11T06:39:07	2012-06-11T06:16:59	Number of optional ACIS chips dropped	0	0
[s] Observation end time (MET)	455792916.184000	455793152.47349	On-chip summing requested	N	N
Observation end date	2012-06-11T09:07:30	2012-06-11T09:12:32	Subarray requested	NONE	NONE
Read mode	TIMED	TIMED	Alternating exposures requested	N	N
			[s] Primary exposure time	0.000000	3.1

2.3 Aspect



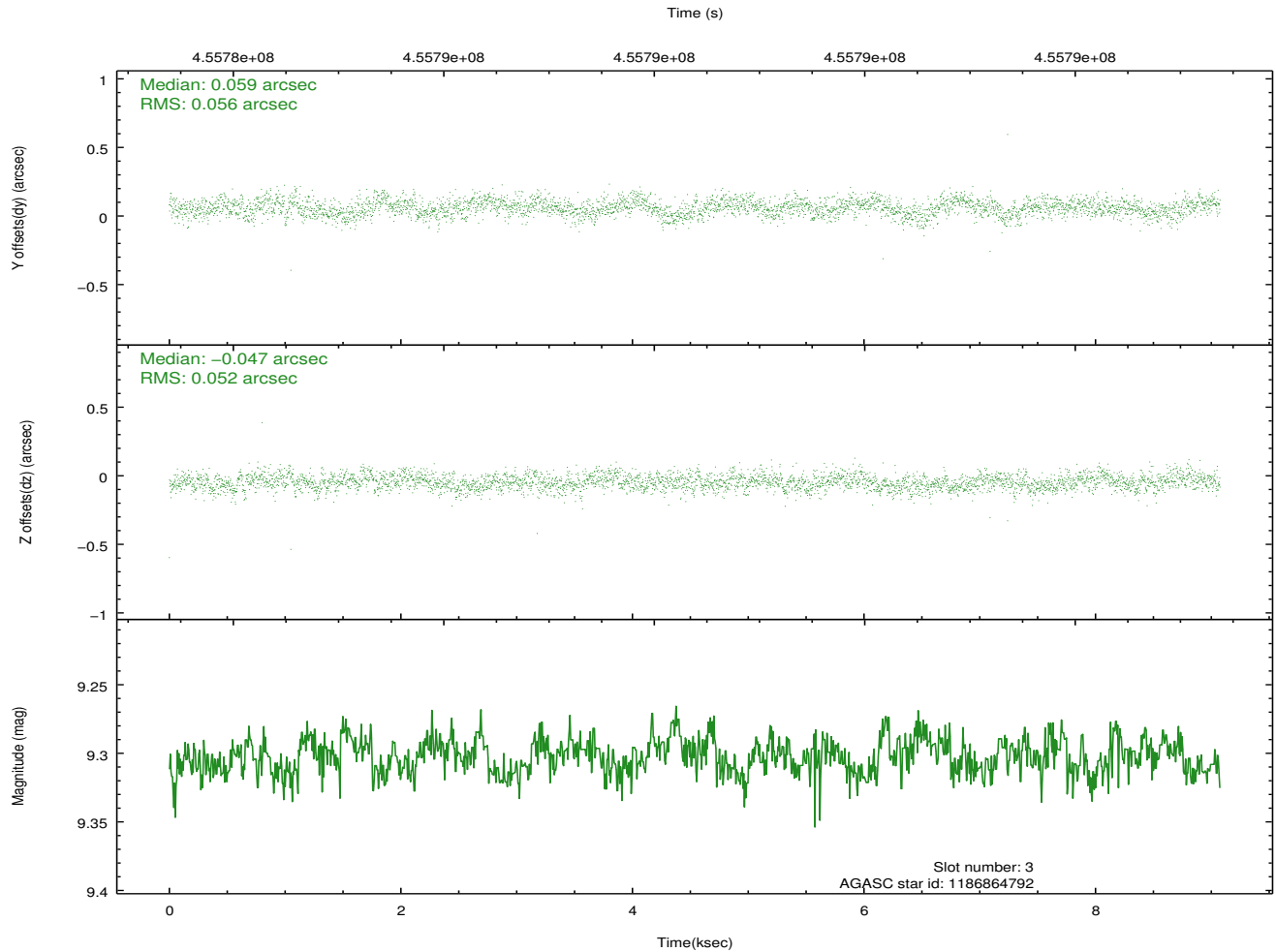
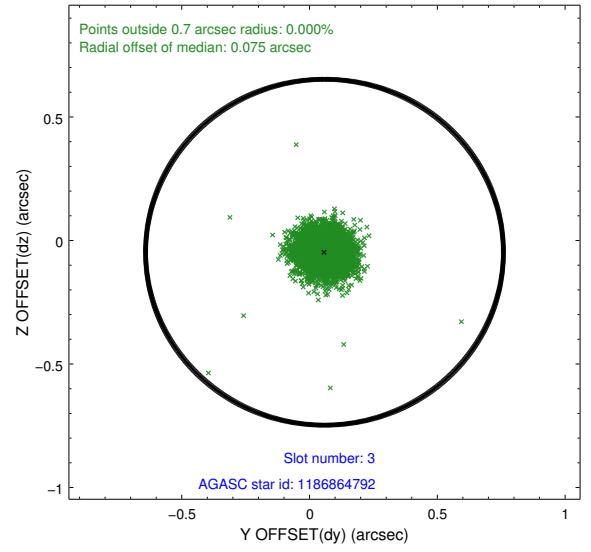
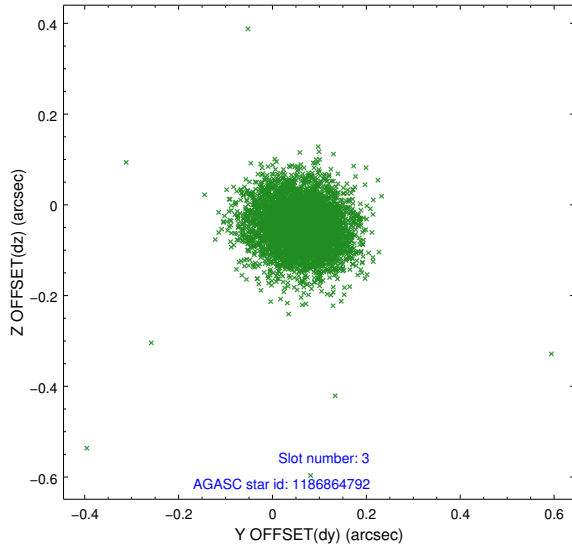


Slot Statistics

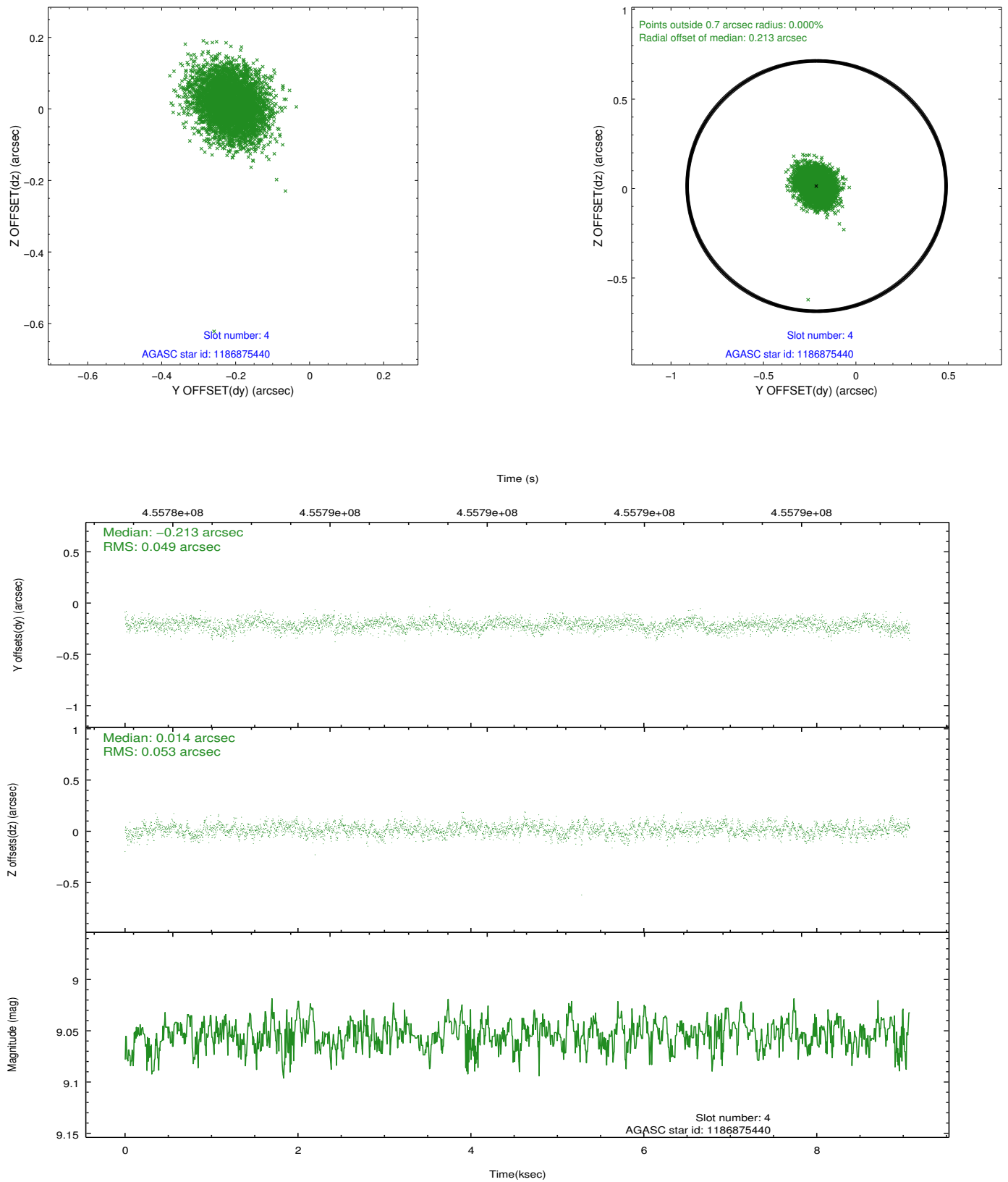
slot	status	id	mag	n_pts	med_dy	med_dz	dr1	dr2	ra	dec	mean_y	mean_z
0	FID	ACIS-I-1	7.05	2213	0.091	-0.058	0.009	0.015	0.000000	0.000000	928.79	-899.03
1	FID	ACIS-I-5	7.04	2214	-0.238	0.083	0.007	0.012	0.000000	0.000000	-1819.32	998.27
2	FID	ACIS-I-6	7.05	2214	0.057	0.045	0.007	0.012	0.000000	0.000000	393.64	1643.42
3	GUIDE	1186864792	9.30	4422	0.059	-0.047	0.080	0.129	272.229345	-61.513922	-1909.32	505.73
4	GUIDE	1186875440	9.05	4423	-0.213	0.014	0.076	0.125	273.398273	-61.215885	349.08	844.09
5	GUIDE	1186877784	8.67	4424	0.165	-0.033	0.093	0.152	273.102433	-61.235379	-156.01	952.48
6	GUIDE	1187396968	8.83	4428	0.141	0.247	0.081	0.133	273.761007	-62.093911	-158.26	-2336.37
7	GUIDE	1188574872	7.20	4426	-0.150	-0.181	0.059	0.101	274.577816	-61.208608	2273.44	150.27

2.4 Star Slots

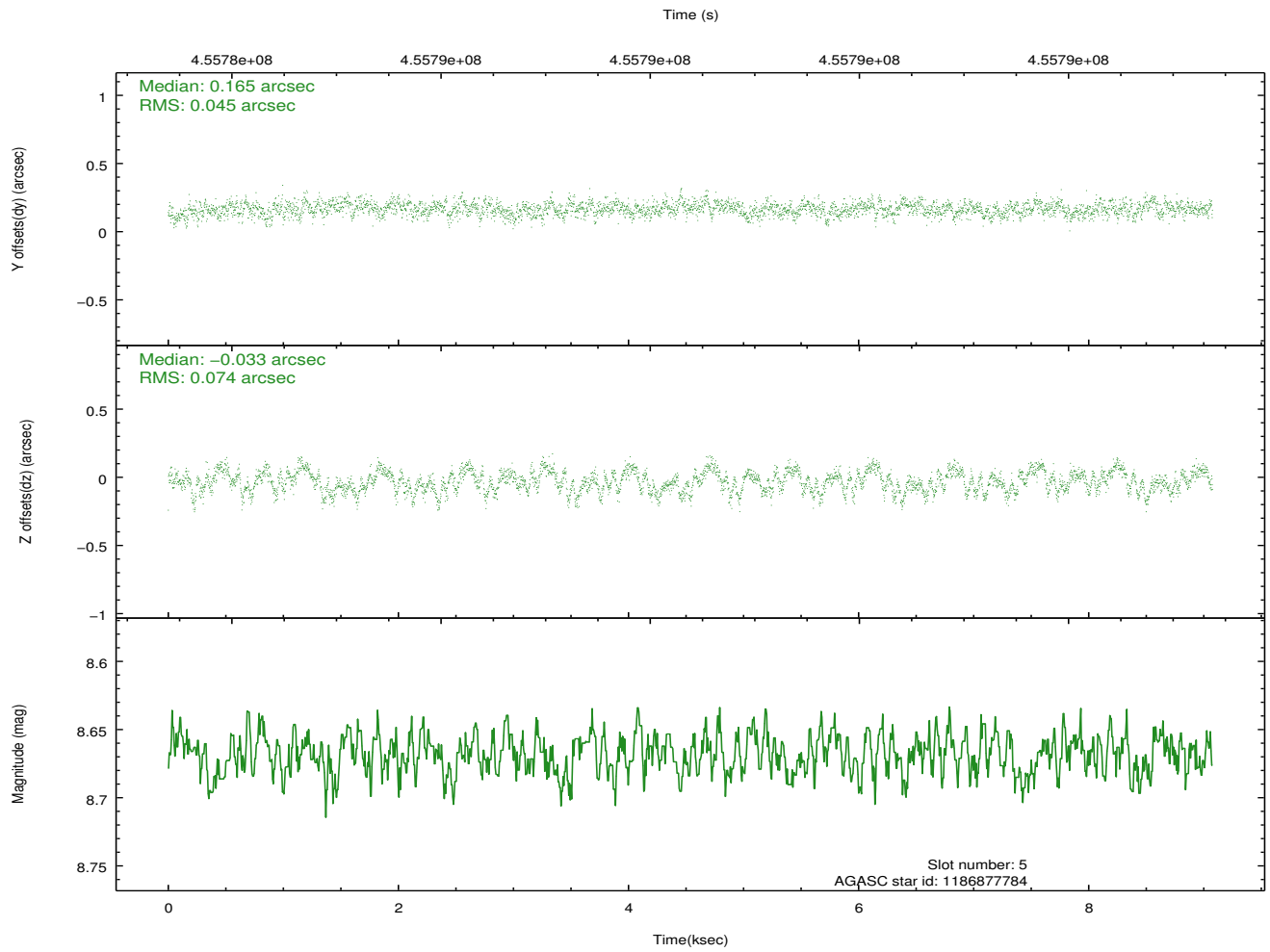
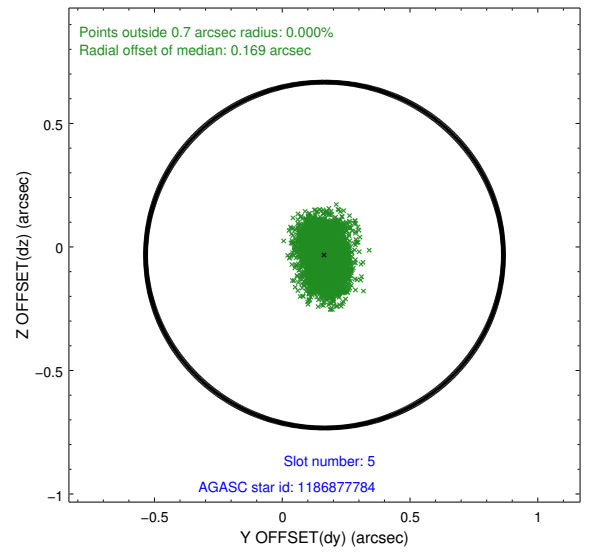
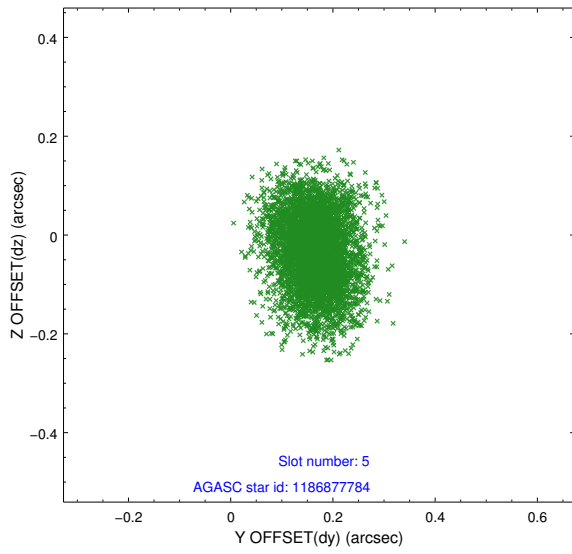
2.4.1 Slot 3



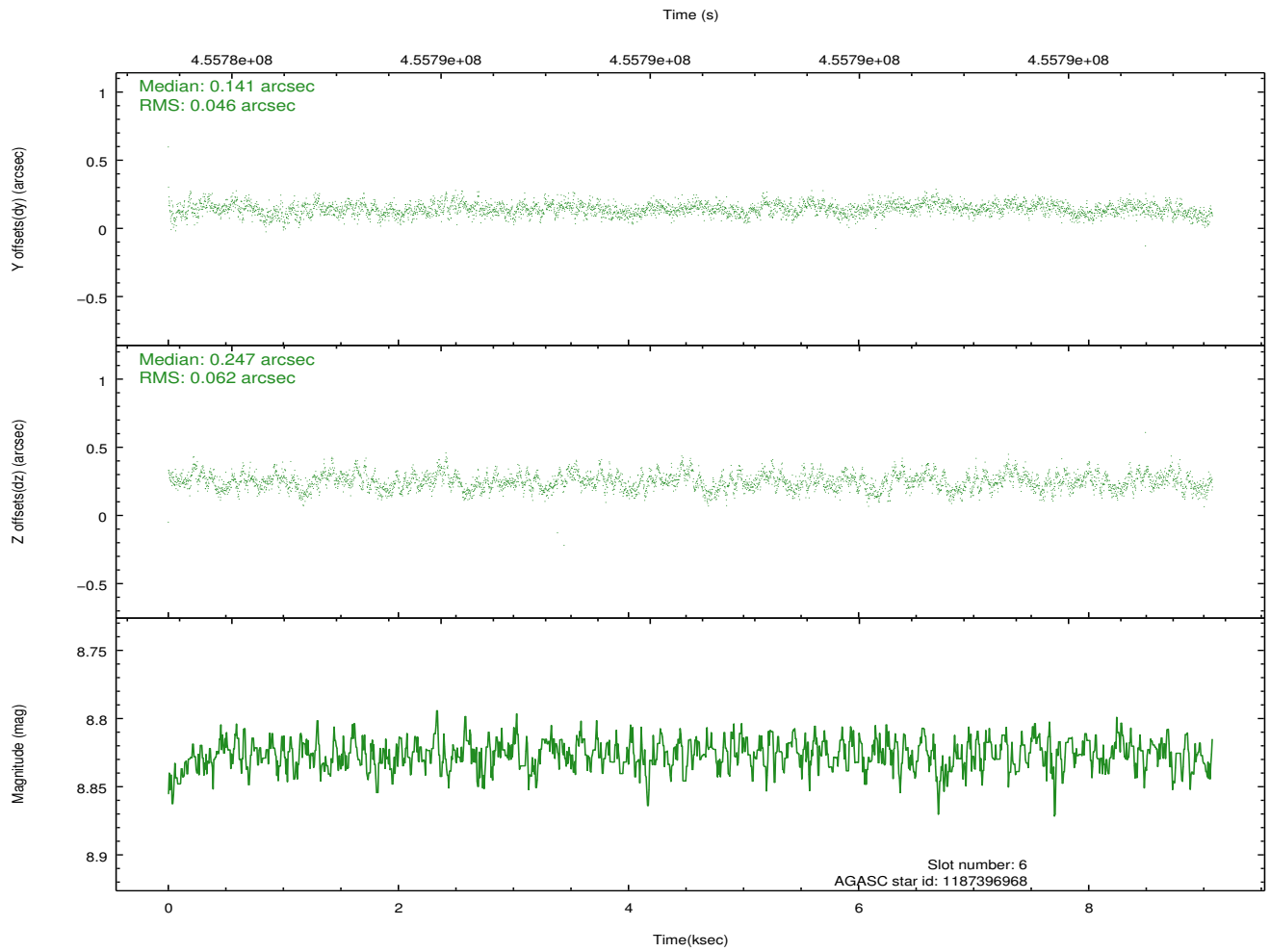
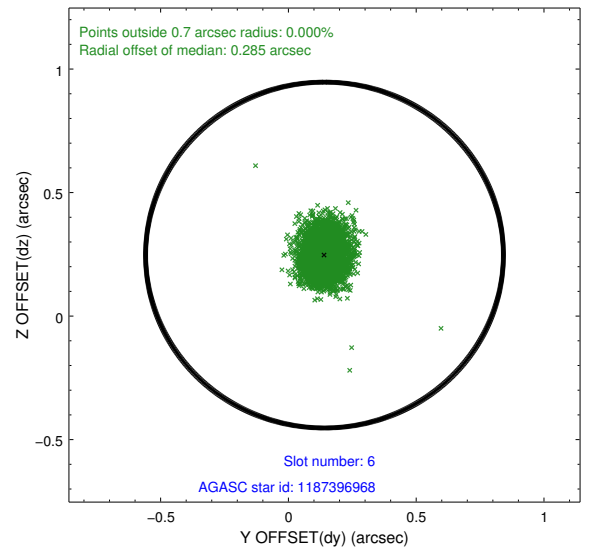
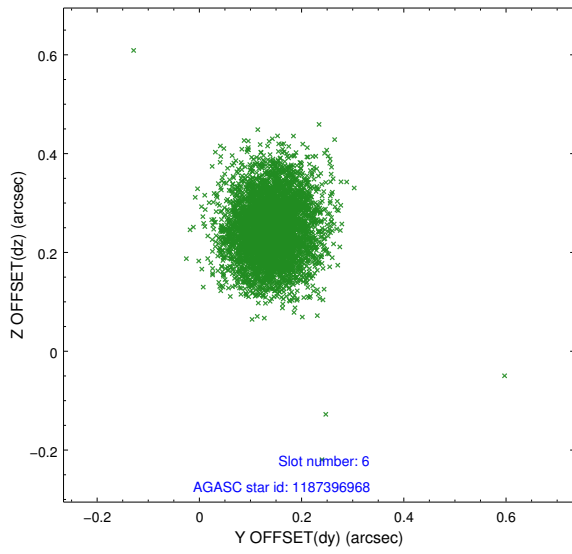
2.4.2 Slot 4



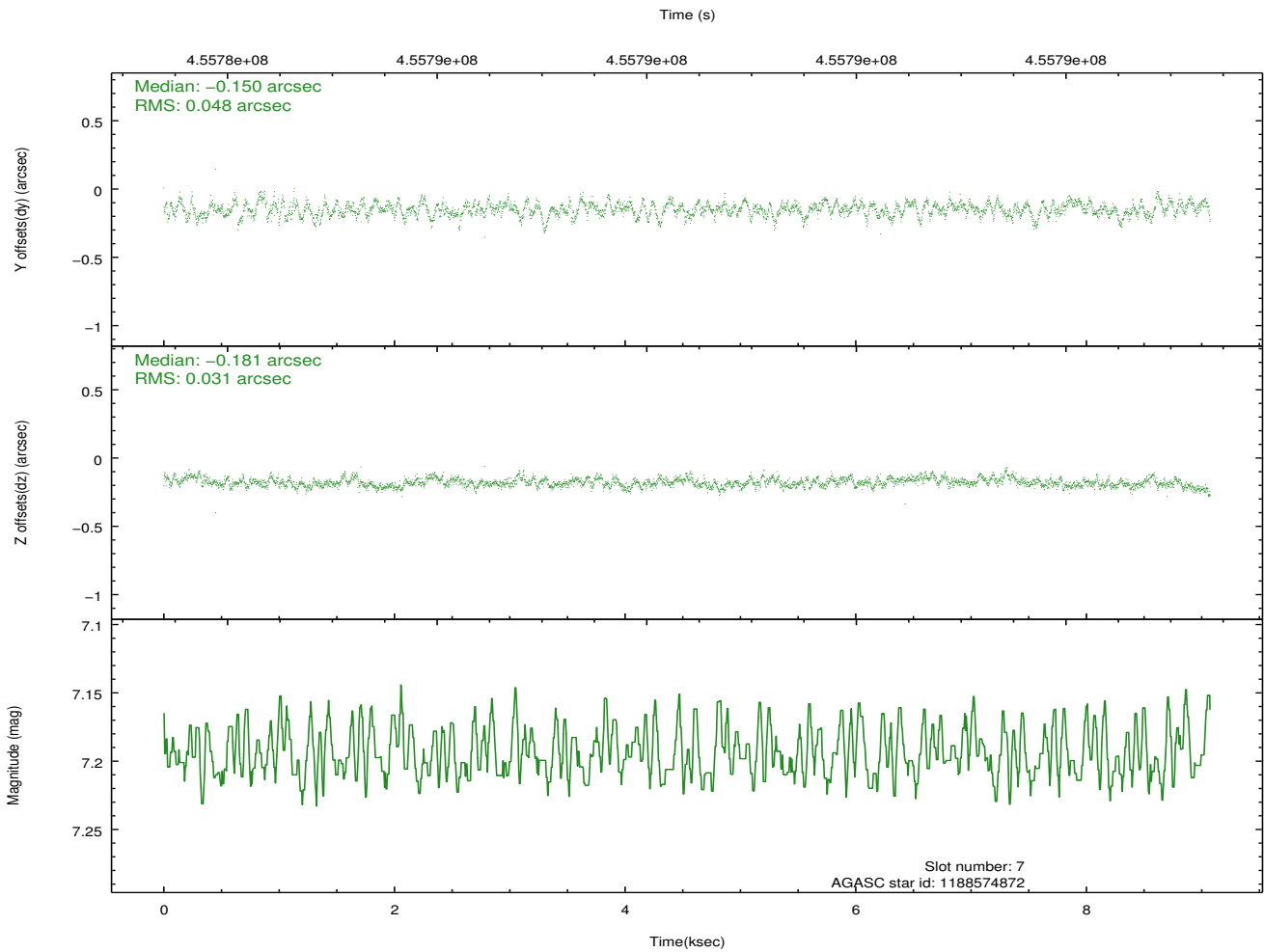
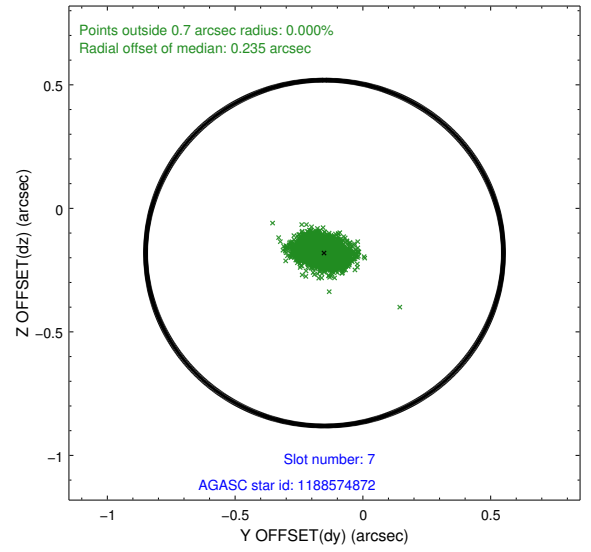
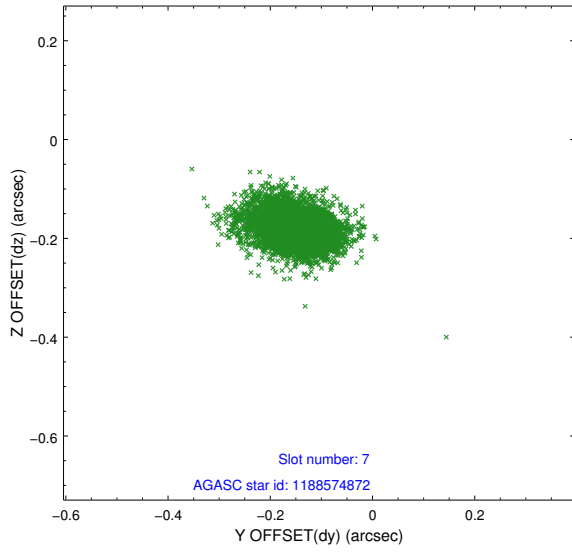
2.4.3 Slot 5



2.4.4 Slot 6

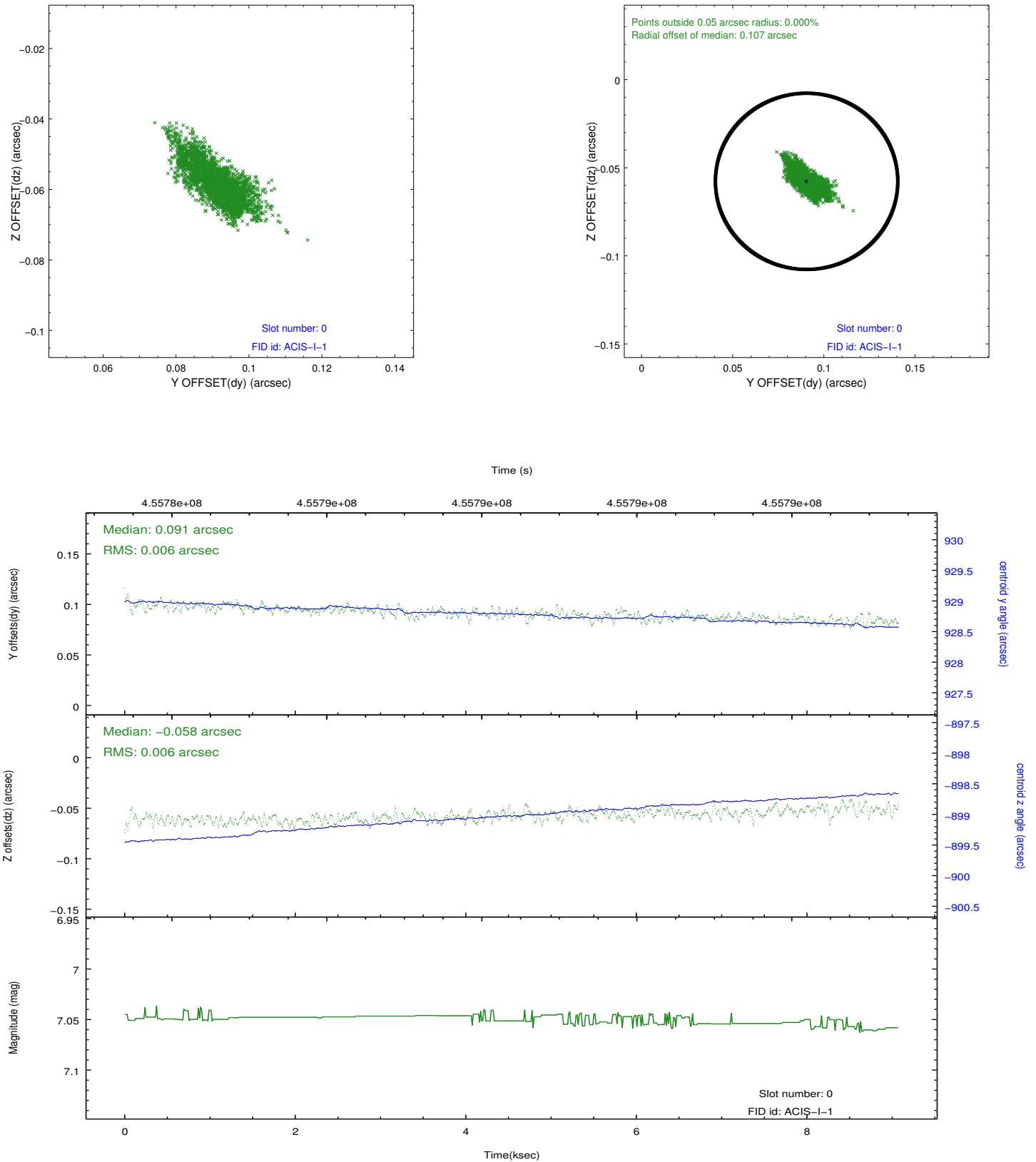


2.4.5 Slot 7

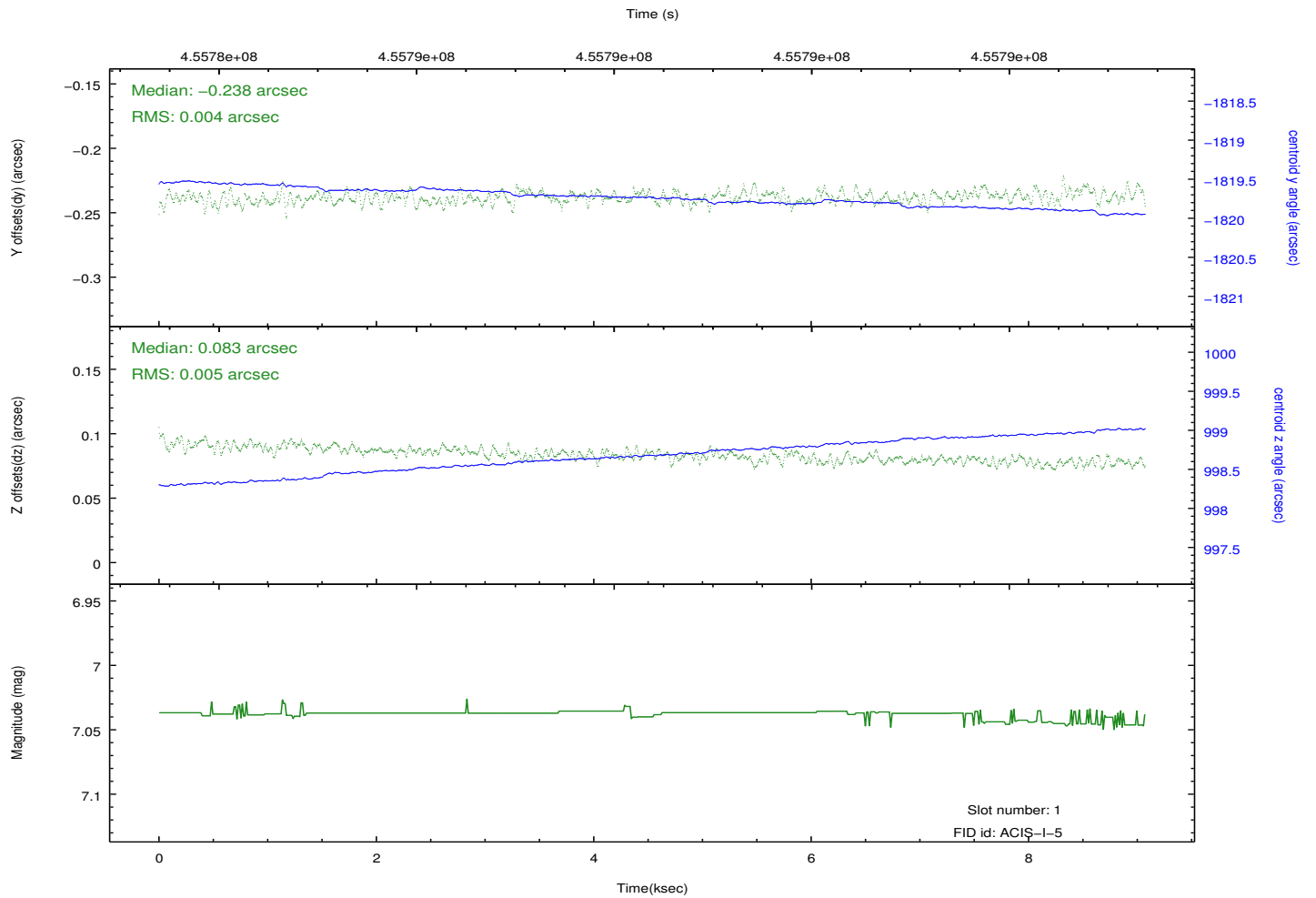
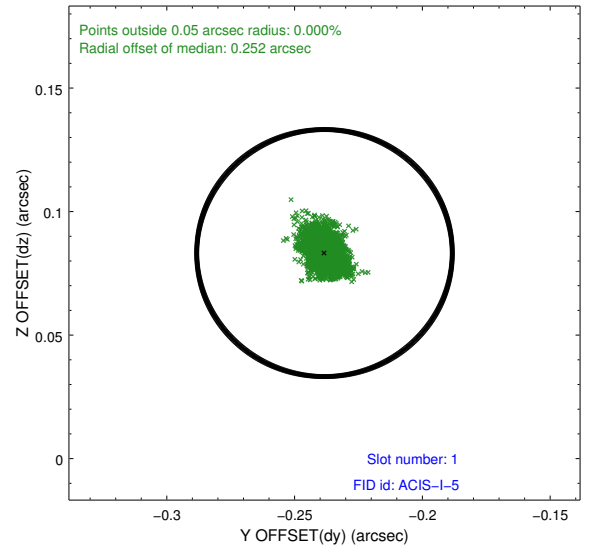
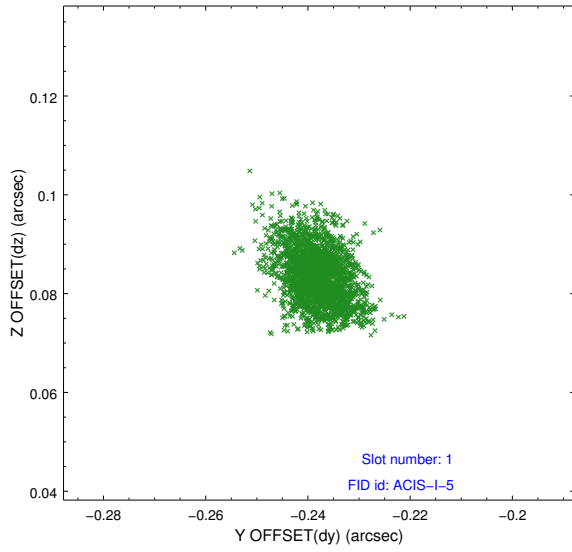


2.5 FID Slots

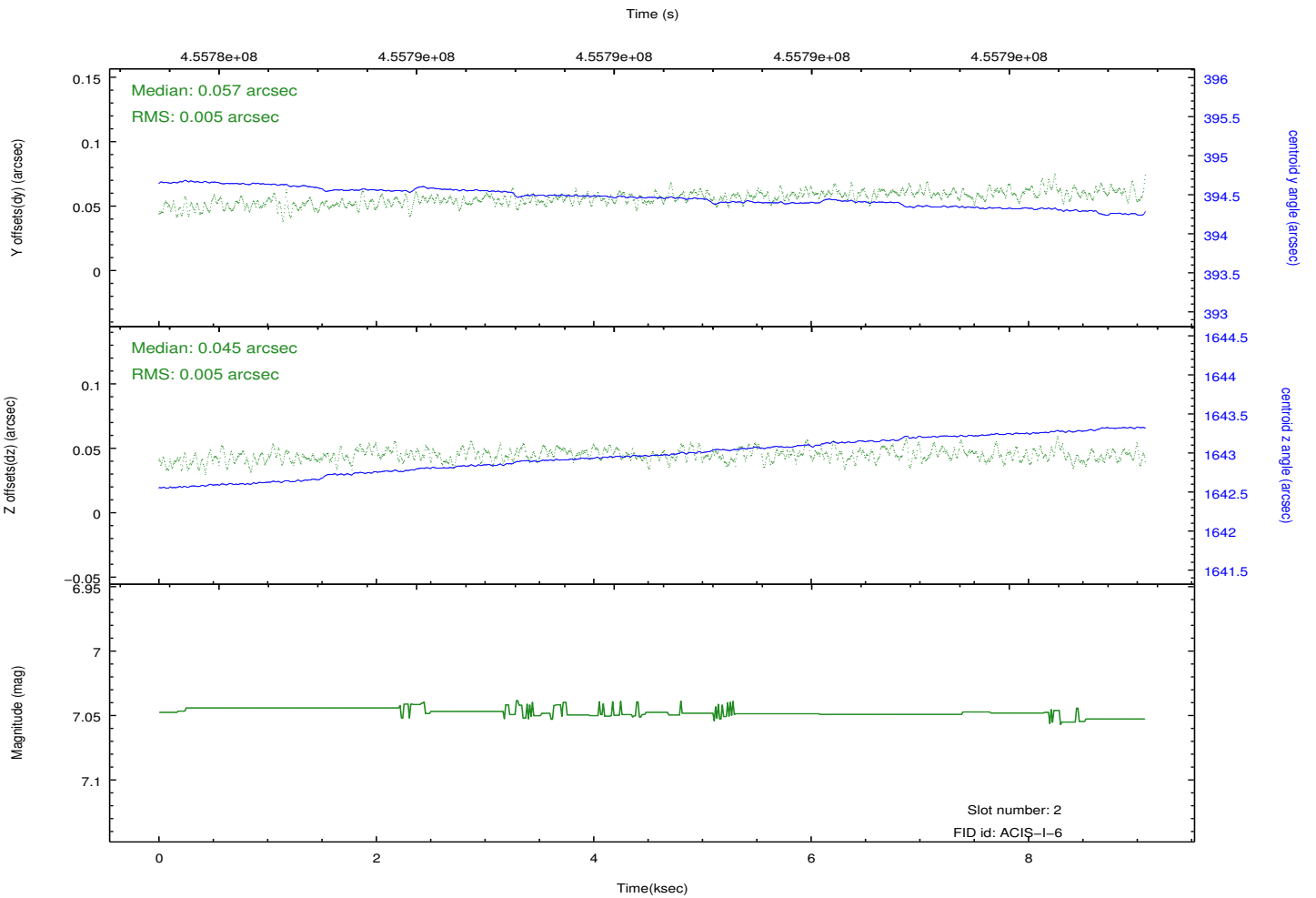
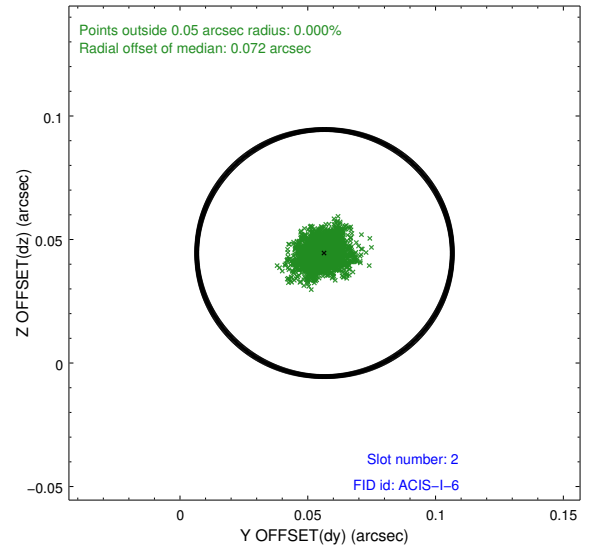
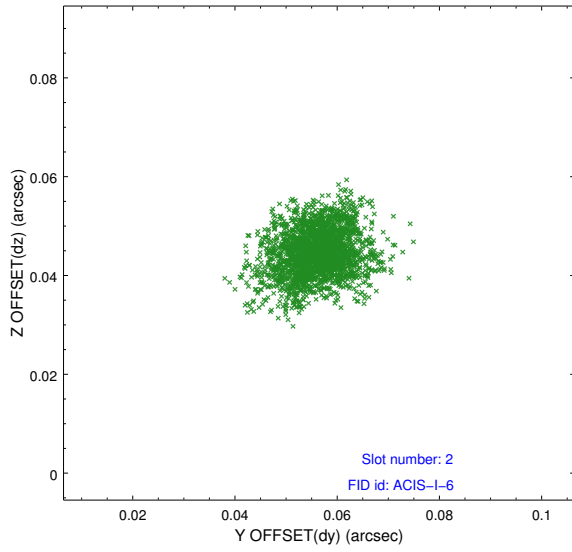
2.5.1 Slot 0



2.5.2 Slot 1



2.5.3 Slot 2



A Summary

A.1 Status

V&V Scientist	Jen Lauer
V&V Date (YYYY-MM-DD)	2012.06.12
V&V Edition	1
V&V Disposition and Status	OK
V&V Charge Time	8.9837838935852

A.2 Comments