

# V&V Reference Report

## L2 ASCDS Version : 8.4.3

Observation 14419 - L2 Version 1  
Chandra X-Ray Center

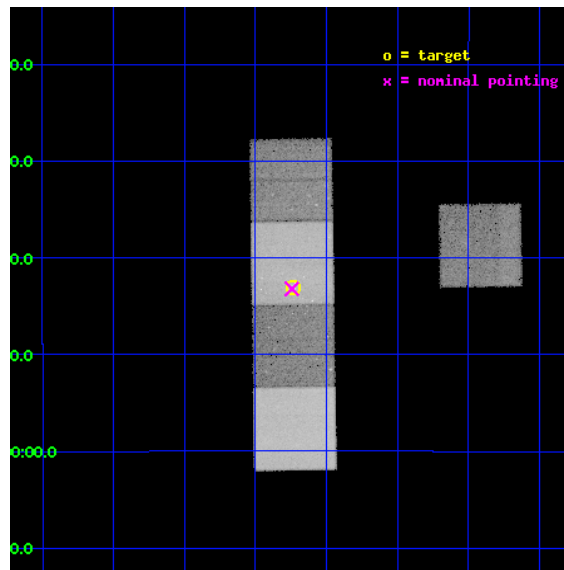
L2 Processing Date : Apr 6 2012

## Contents

<b>1</b>	<b>Front</b>	<b>2</b>
<b>2</b>	<b>OBI</b>	<b>3</b>
2.1	OBI . . . . .	3
2.1.1	Images . . . . .	3
2.1.2	Bias . . . . .	3
2.1.3	Parameters . . . . .	4
2.1.4	Events . . . . .	4
2.2	Compared Parameters . . . . .	5
2.3	Aspect . . . . .	6
2.4	Star Slots . . . . .	9
2.4.1	Slot 3 . . . . .	9
2.4.2	Slot 4 . . . . .	10
2.4.3	Slot 5 . . . . .	11
2.4.4	Slot 6 . . . . .	12
2.4.5	Slot 7 . . . . .	13
2.5	FID Slots . . . . .	14
2.5.1	Slot 0 . . . . .	14
2.5.2	Slot 1 . . . . .	15
2.5.3	Slot 2 . . . . .	16
<b>A</b>	<b>Summary</b>	<b>17</b>
A.1	Status . . . . .	17
A.2	Comments . . . . .	17

# 1 Front

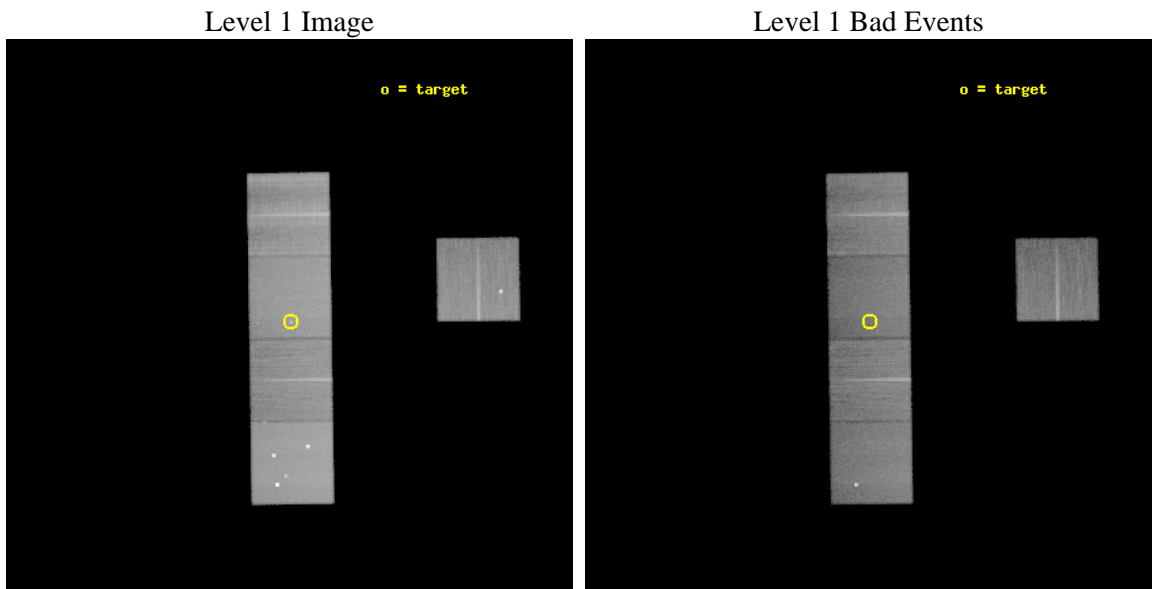
seq_num	600996	Sequence number
obs_id	14419	Observation id
title	A Chandra Legacy Project to Resolve the Accretion Flow of Gas Captured by a Supermassive Black Hole	Proposal title
observer	Professor JIMMY IRWIN	Principal investigator
object	NGC3115	Source name
dtcycle	0	&#160
cycle	P	events from which exps? Prim/Second/Both
ra_targ	151.308333	Observer's specified target RA [deg]
dec_targ	-7.718583	Observer's specified target Dec [deg]
ra_nom	151.31088423309	Nominal RA [deg]
dec_nom	-7.720240275493	Nominal Dec [deg]
roll_nom	269.15697447606	Nominal Roll [deg]
revision	1	Processing version of data
ontime	46893.700360656	Sum of GTIs [s]
livetime	46280.999642804	Livetime [s]
ontime1	46890.559350431	Sum of GTIs [s]
ontime5	46893.700360656	Sum of GTIs [s]
ontime6	46890.559340298	Sum of GTIs [s]
ontime7	46893.700360656	Sum of GTIs [s]
ontime8	46893.700360656	Sum of GTIs [s]
l2events	420940	Number of level 2 events



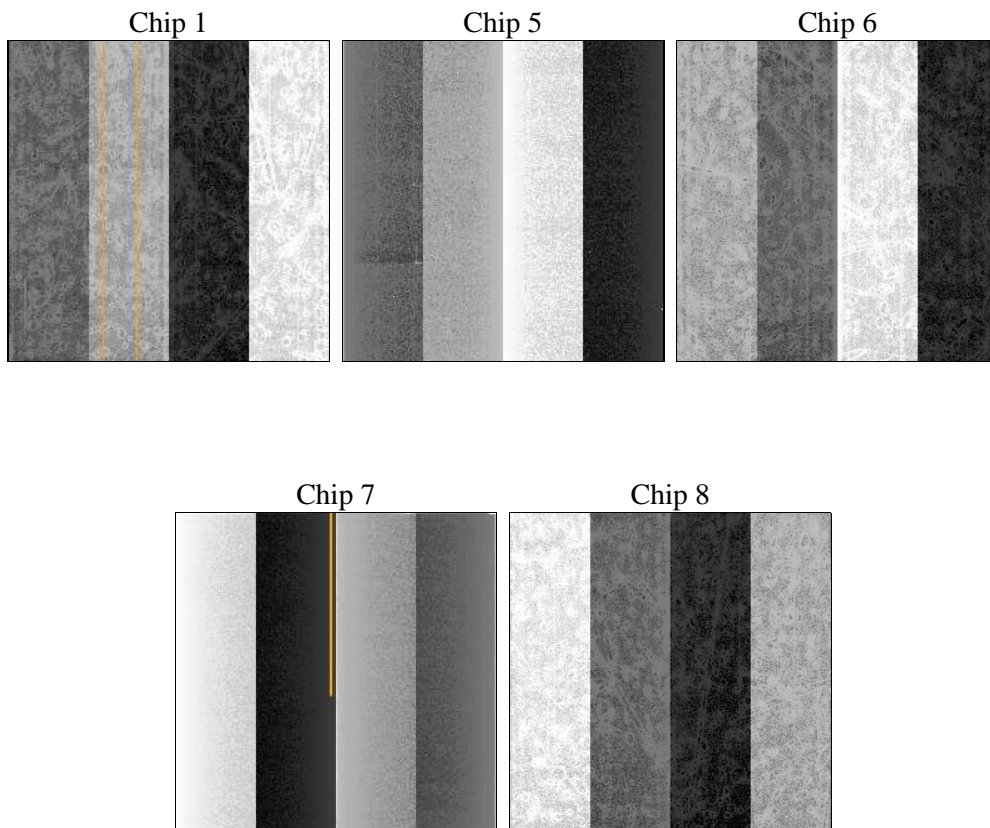
## 2 OBI

### 2.1 OBI

#### 2.1.1 Images



#### 2.1.2 Bias



### 2.1.3 Parameters

obi_num	0	Obi number	sched_exp_time	46832.071000	[s] Scheduled observation exposure time
ascdsver	8.4.3	Processing system revision	ontime	46893.700360656	Sum of GTIs [s]
caldsver	4.4.9	&#160	ontime1	46890.559350431	Sum of GTIs [s]
date	2012-04-06T18:26:12	Date and time of file creation	ontime5	46893.700360656	Sum of GTIs [s]
revision	1	Processing version of data	ontime6	46890.559340298	Sum of GTIs [s]
			ontime7	46893.700360656	Sum of GTIs [s]
			ontime8	46893.700360656	Sum of GTIs [s]
			l1events	1627136	Number of level 1 events

### 2.1.4 Events

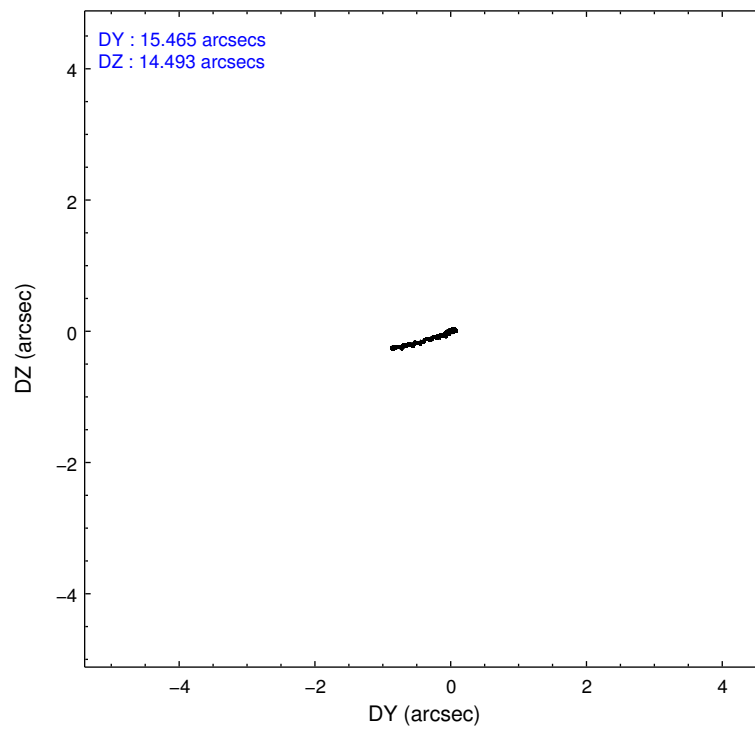
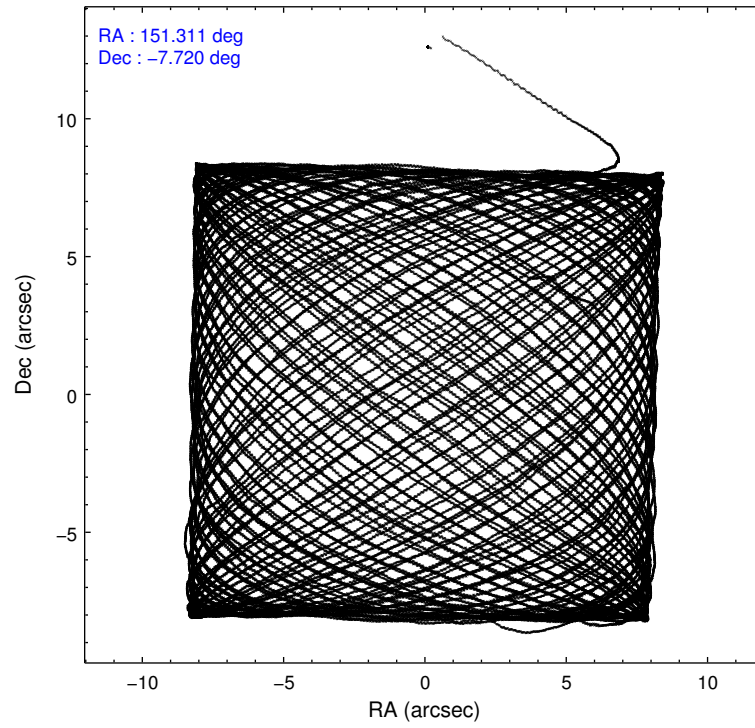
	ccd 1	ccd 5	ccd 6	ccd 7	ccd 8
level 1 events	239707	443957	261882	341129	340461
rejected events	203300	217554	231148	189315	249524
rejected %	84%	49%	88%	55%	73%

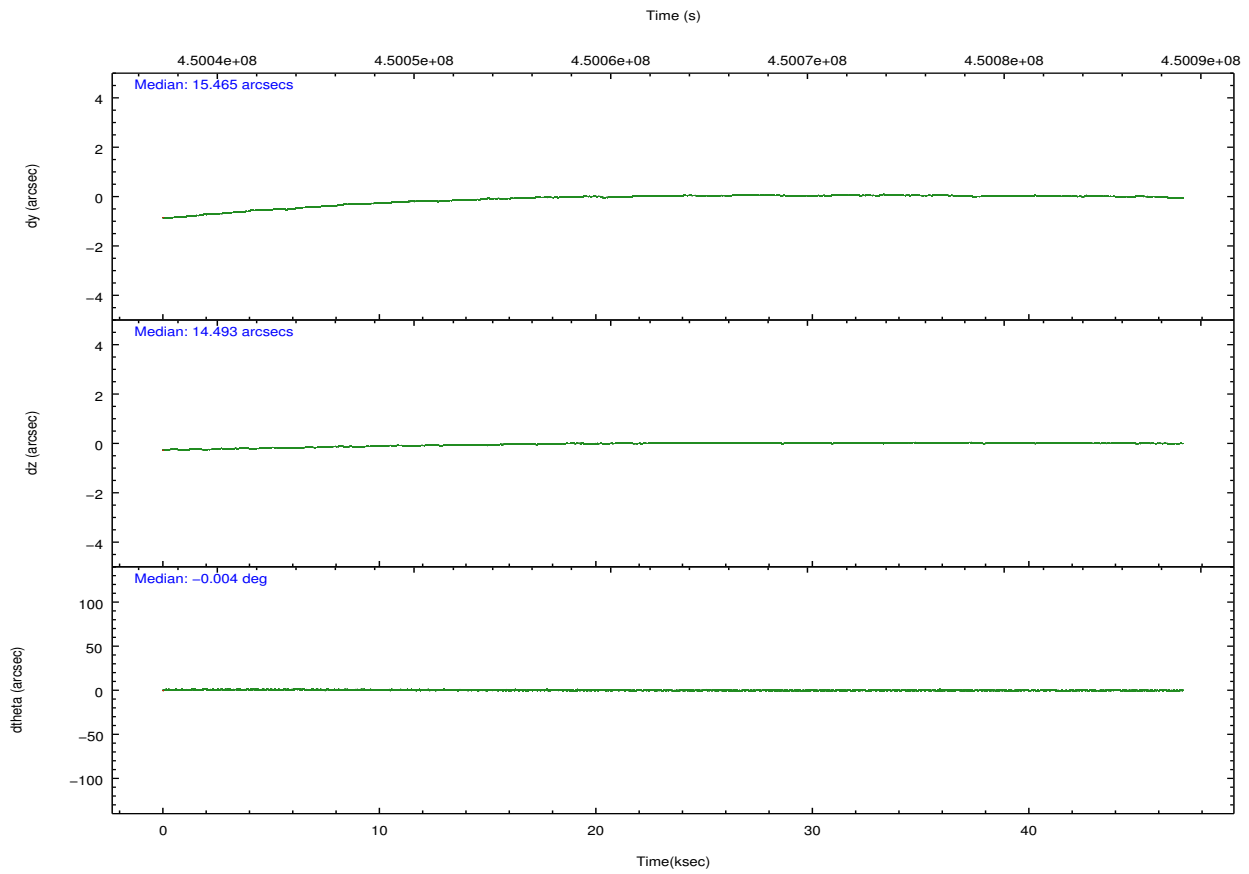
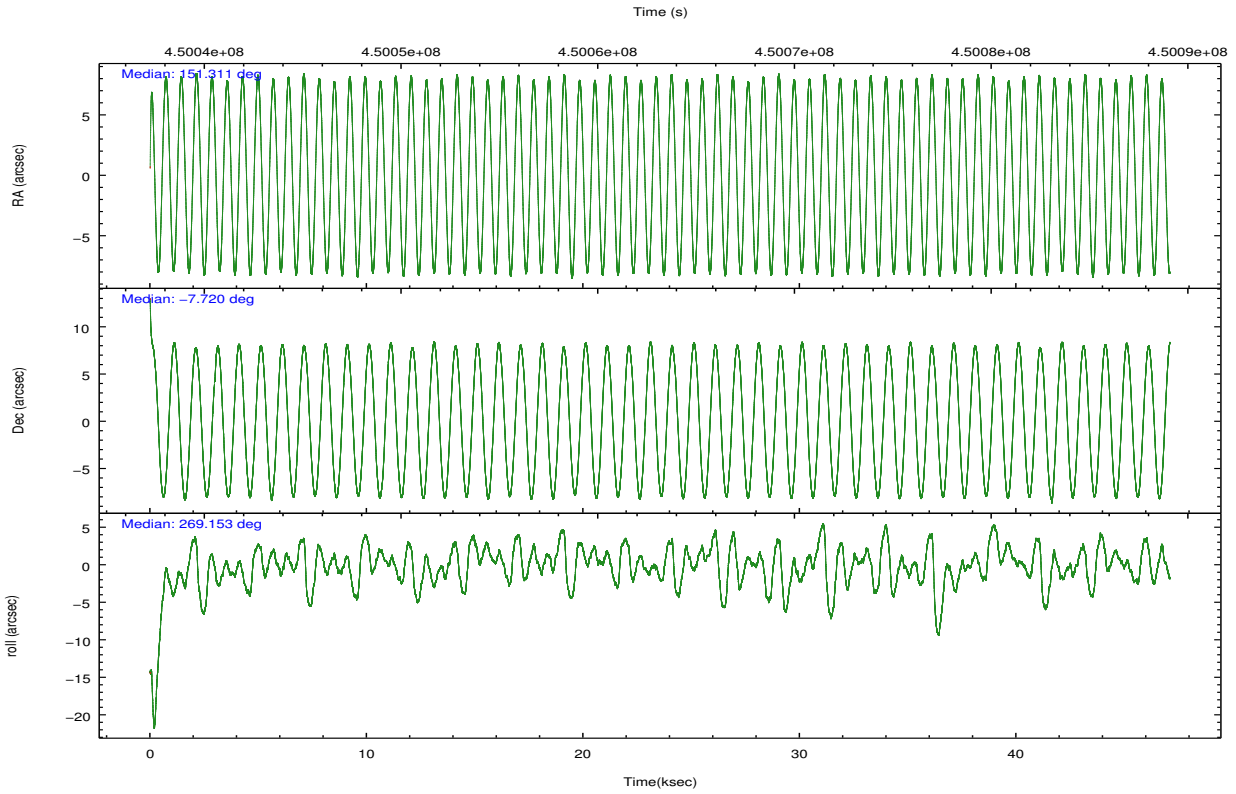
	ccd 1	ccd 5	ccd 6	ccd 7	ccd 8
grade 0 events	15378	37845	10524	13959	26264
	6%	8%	4%	4%	7%
grade 1 events	179	720	120	396	288
	0%	0%	0%	0%	0%
grade 2 events	7641	66889	6847	30839	21217
	3%	15%	2%	9%	6%
grade 3 events	3271	7048	3120	13431	9838
	1%	1%	1%	3%	2%
grade 4 events	3256	6776	3195	13232	9055
	1%	1%	1%	3%	2%
grade 5 events	12094	31206	12880	35136	18797
	5%	7%	4%	10%	5%
grade 6 events	6863	107862	7050	80361	24578
	2%	24%	2%	23%	7%
grade 7 events	191025	185611	218146	153775	230424
	79%	41%	83%	45%	67%

## 2.2 Compared Parameters

Parameter	Planned	Actual	Parameter	Planned	Actual
Instrument	ACIS	ACIS	Obspar format version number	7	7
Detector	ACIS-15678	ACIS-15678	Obspar file type	PREDICTED	ACTUAL
Grating	NONE	NONE	Obspar update status	NONE	UPDATED
Data mode	VFAINT	VFAINT	Number of optional ACIS chips dropped	0	0
Observation mode	POINTING	POINTING	On-chip summing requested	N	N
[deg] Pointing RA	151.297118	151.3108842330862	Subarray requested	NONE	NONE
[deg] Pointing Dec	-7.696551	-7.720240275492956	Alternating exposures requested	N	N
[deg] Pointing Roll	268.998498	269.156974476064	[s] Primary exposure time	0.000000	3.1
[mm] SIM focus pos	-0.684267	-0.6828225247311905			
[mm] SIM defocus	0	0.001444936568705701			
[mm] SIM translation stage pos	-190.132523	-190.1400660498719			
[mm] SIM translation stage offset	0	0.00754346686406393			
[s] Observation start time (MET)	450039900.184000	450038913.38397			
Observation start date	2012-04-05T19:03:54	2012-04-05T18:48:33			
[s] Observation end time (MET)	450086732.184000	450086959.23652			
Observation end date	2012-04-06T08:04:26	2012-04-06T08:09:19			
Read mode	TIMED	TIMED			

## 2.3 Aspect



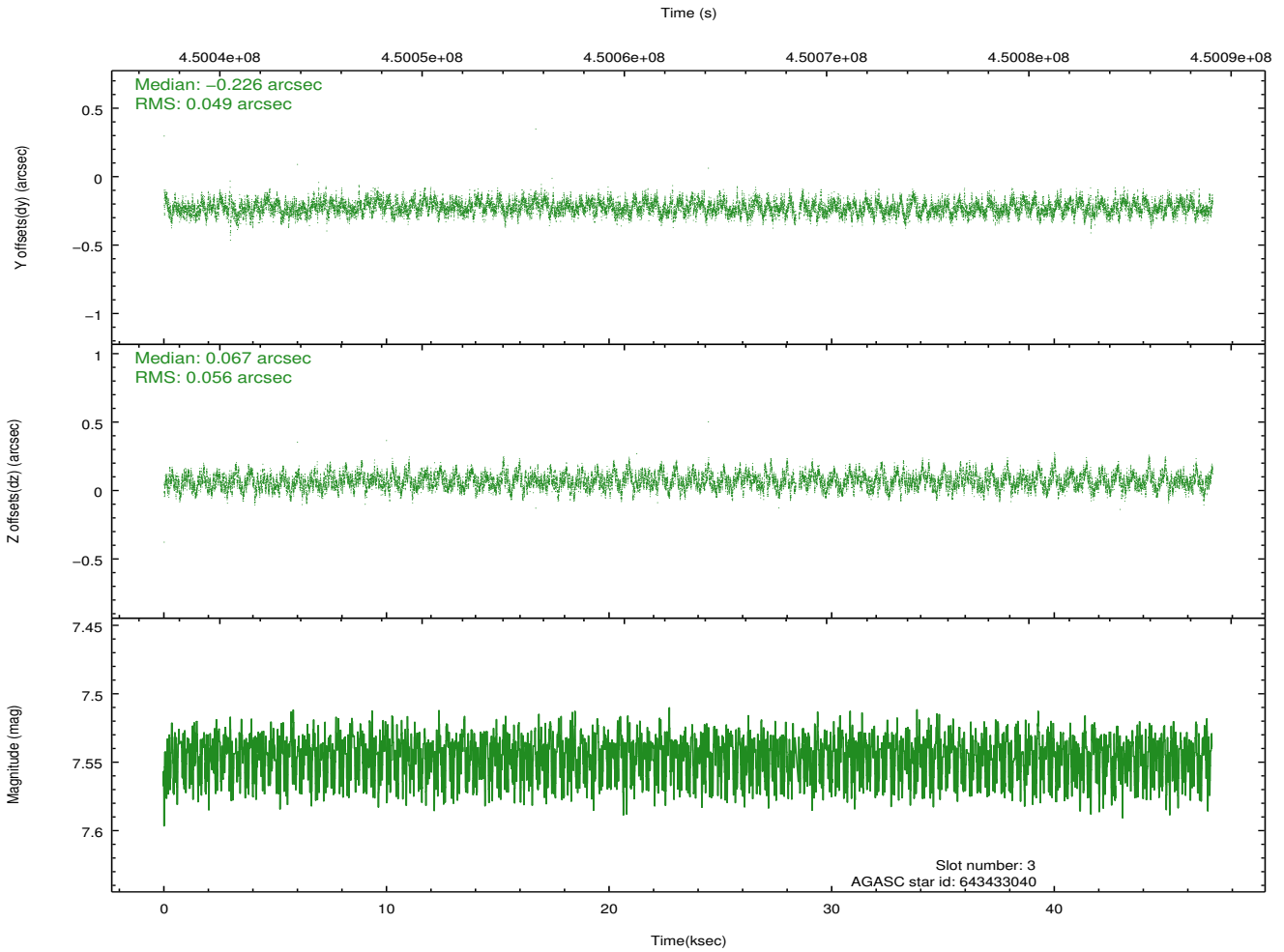
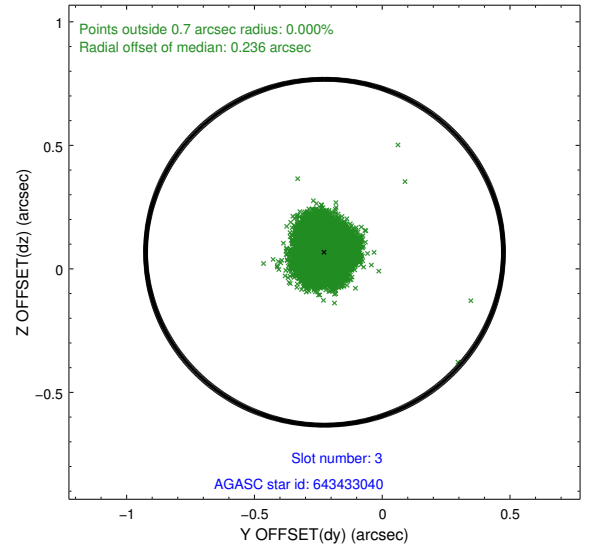
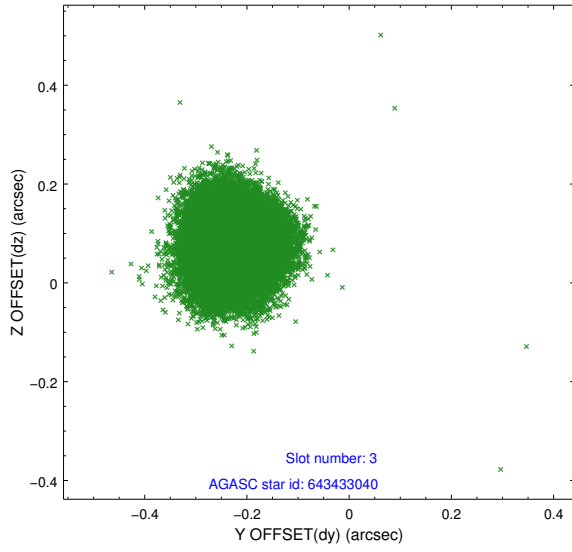


### Slot Statistics

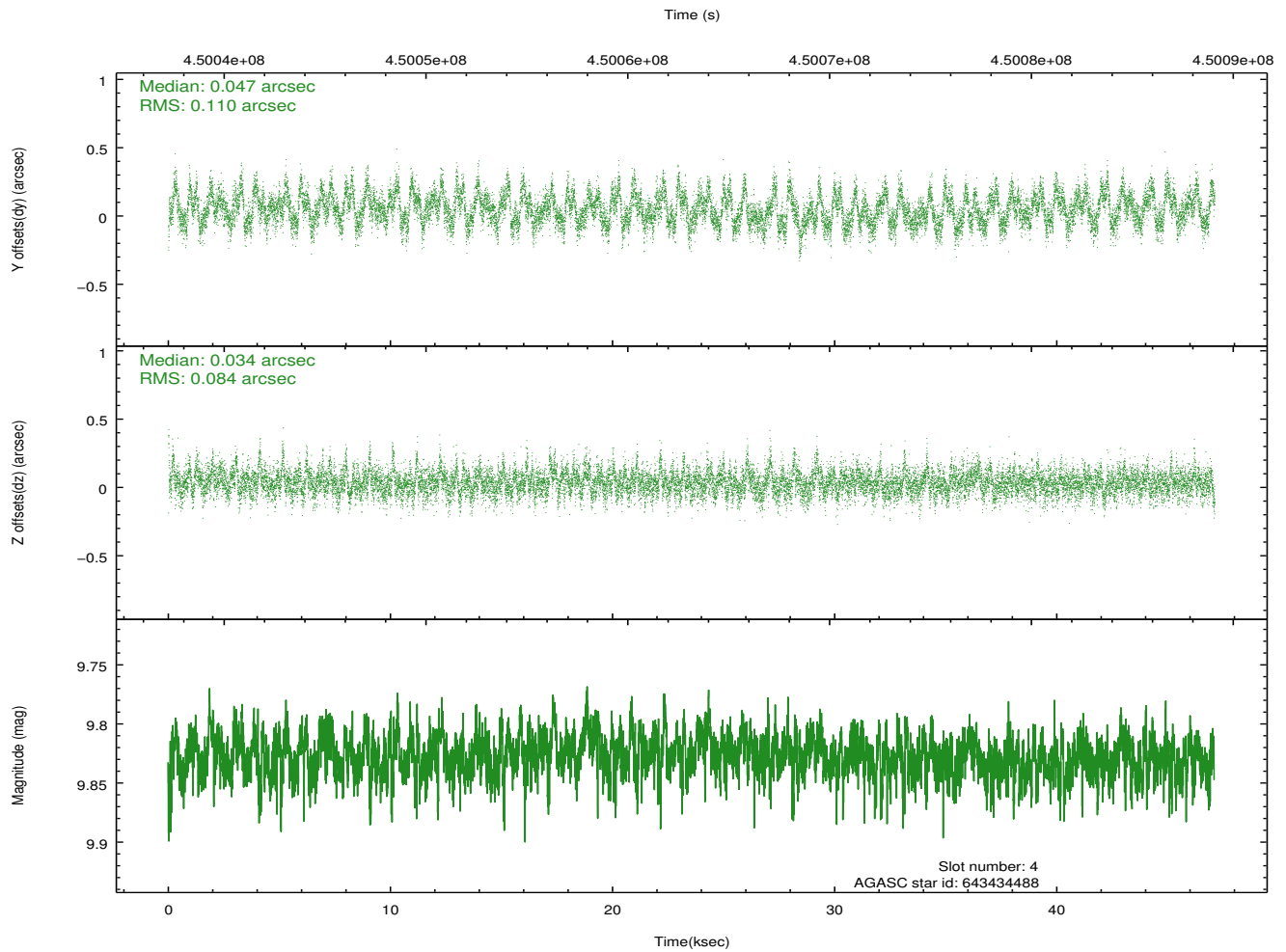
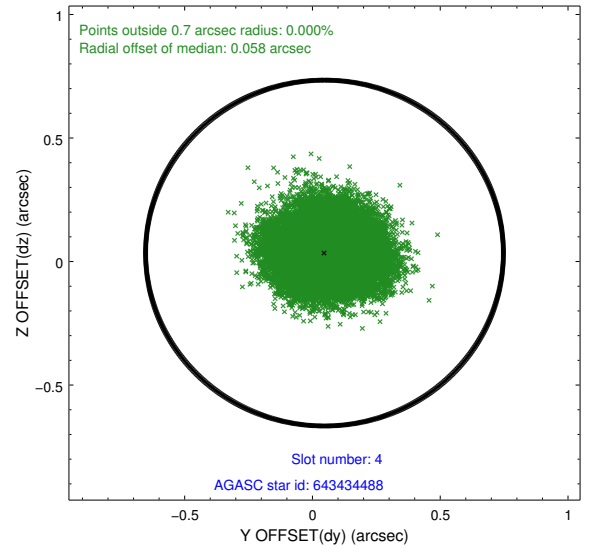
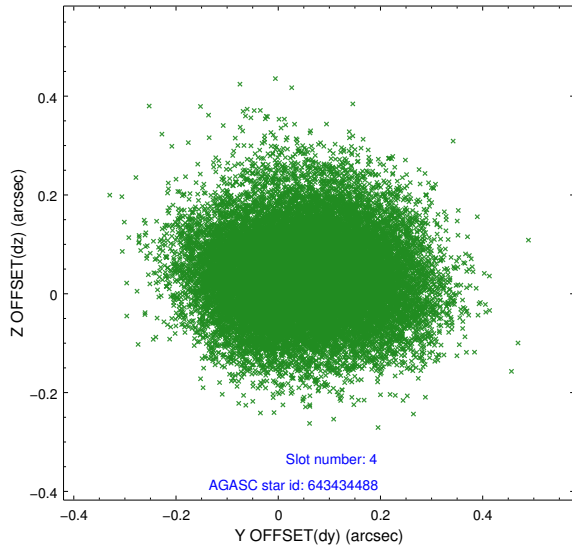
slot	status	id	mag	n_pts	med_dy	med_dz	dr1	dr2	ra	dec	mean_y	mean_z
0	FID	ACIS-S-2	6.96	11489	-0.130	-0.038	0.008	0.026	0.000000	0.000000	-768.45	-1735.85
1	FID	ACIS-S-4	7.06	11488	0.264	0.073	0.007	0.015	0.000000	0.000000	2145.23	172.75
2	FID	ACIS-S-5	7.08	11488	-0.164	-0.026	0.009	0.039	0.000000	0.000000	-1821.34	166.32
3	GUIDE	643433040	7.54	22906	-0.226	0.067	0.081	0.125	151.111617	-7.218386	-1706.75	-690.63
4	GUIDE	643434488	9.83	22952	0.047	0.034	0.149	0.236	151.832885	-7.204834	-1802.12	1882.45
5	GUIDE	717750312	9.01	22964	0.167	0.043	0.100	0.163	150.984877	-7.661913	-104.34	-1115.72
6	GUIDE	717752784	8.76	22968	0.103	0.075	0.099	0.164	150.621335	-8.064937	1370.78	-2385.27
7	GUIDE	717887672	9.70	22747	-0.096	-0.214	0.167	0.284	151.792584	-8.041083	1210.43	1787.56

## 2.4 Star Slots

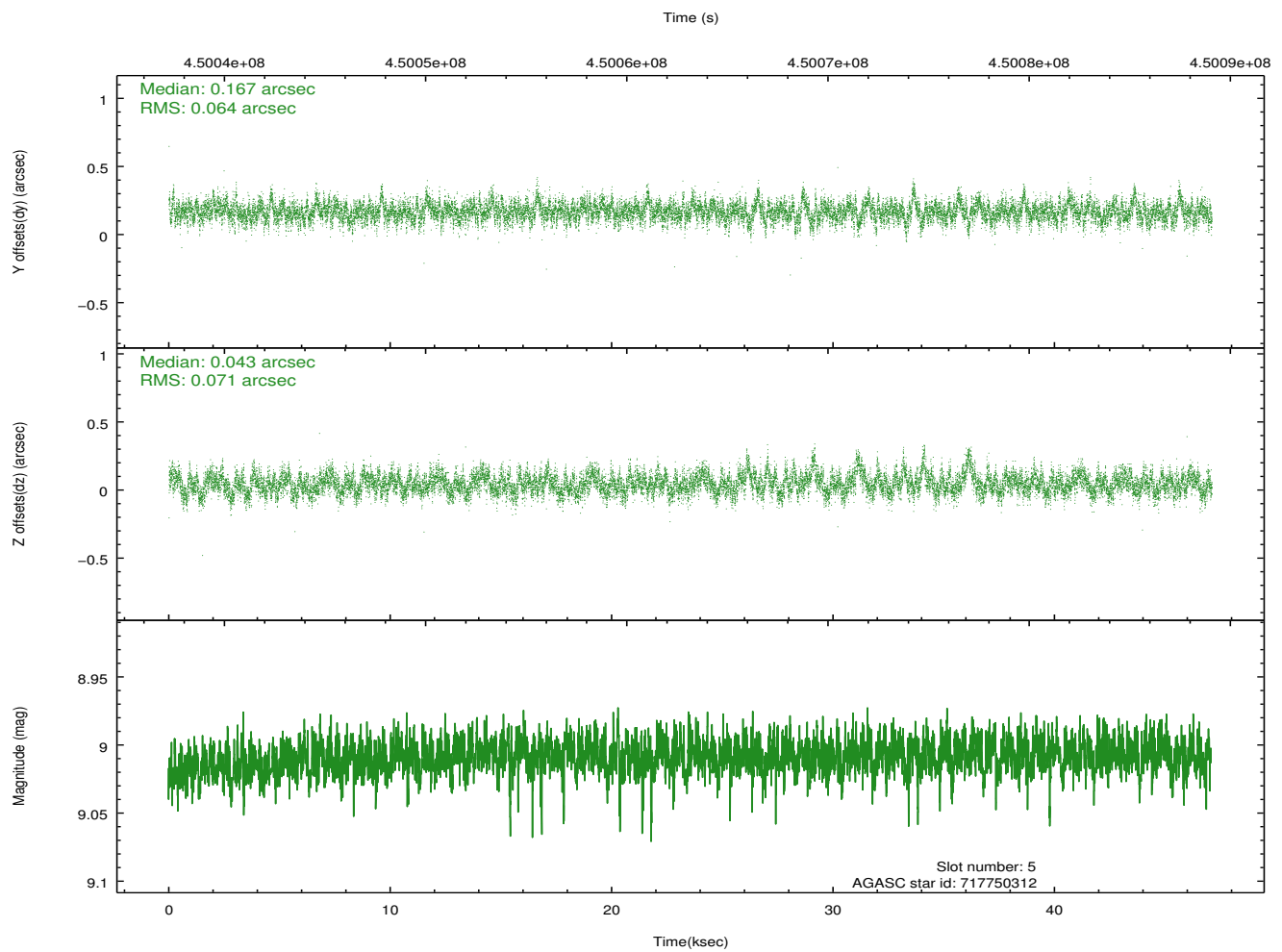
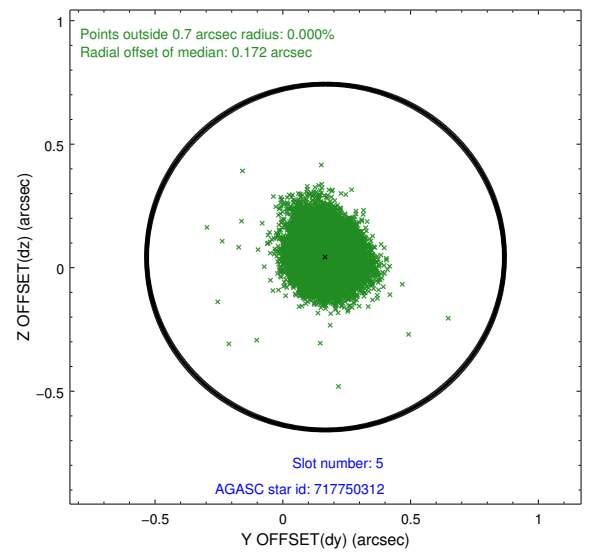
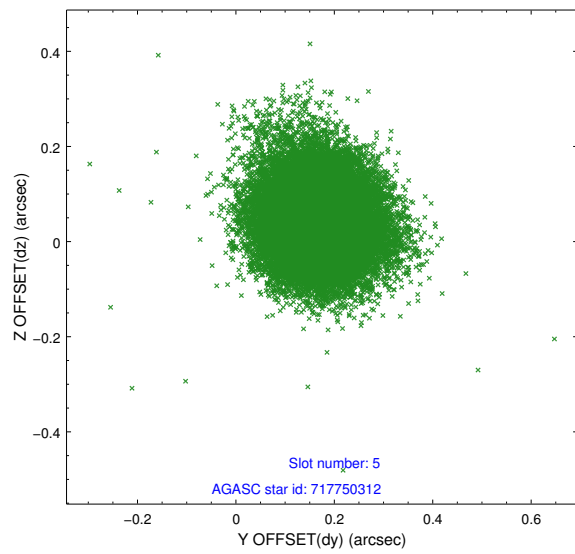
### 2.4.1 Slot 3



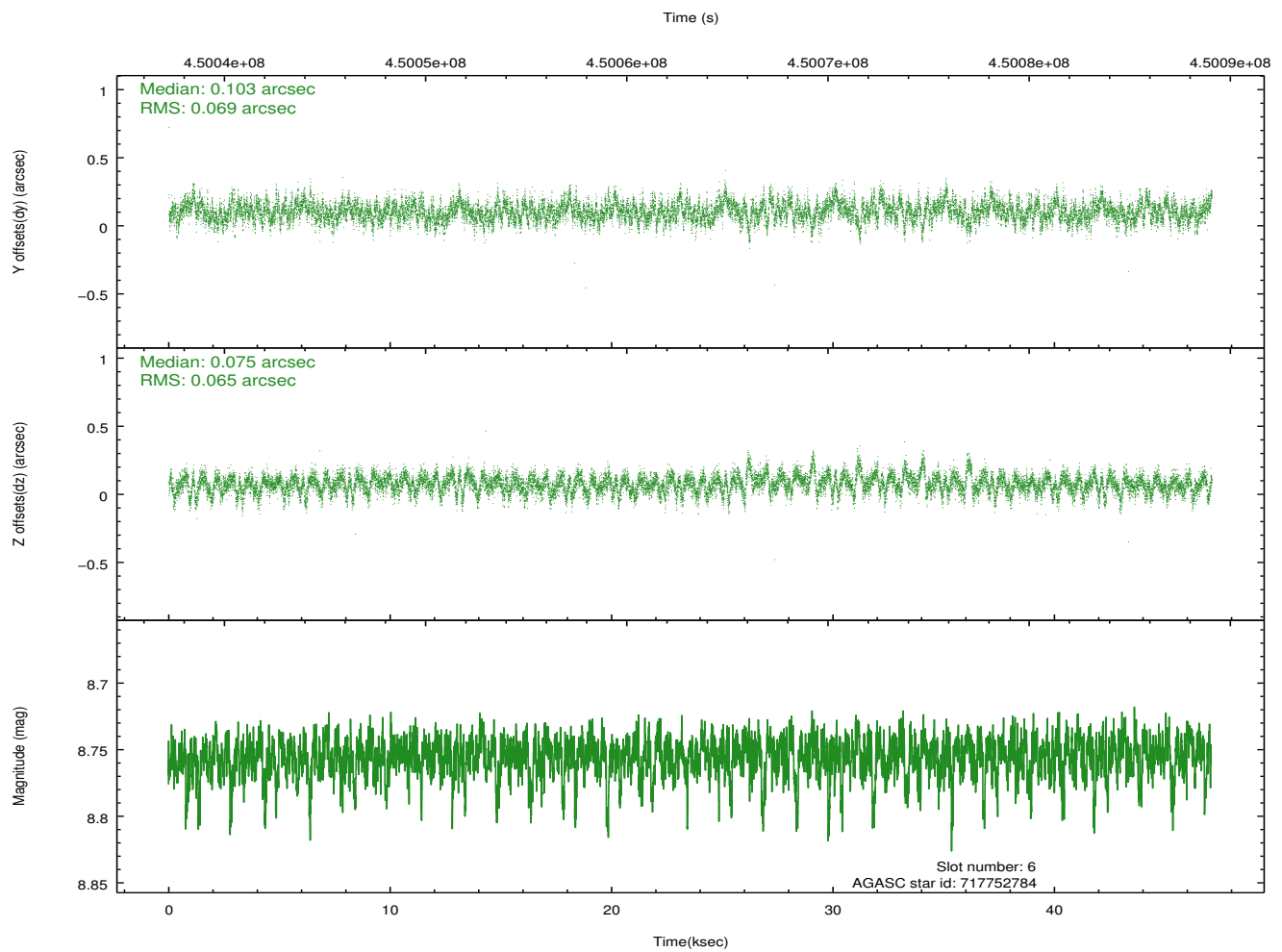
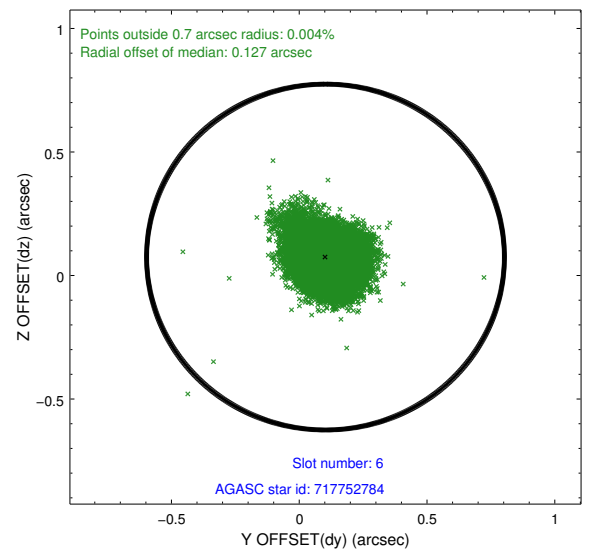
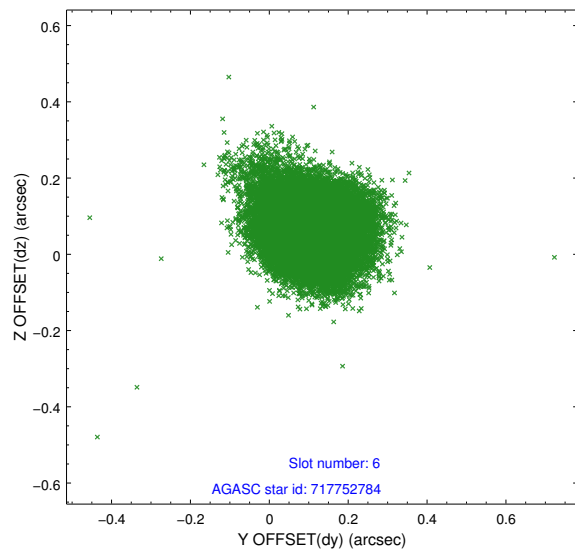
### 2.4.2 Slot 4



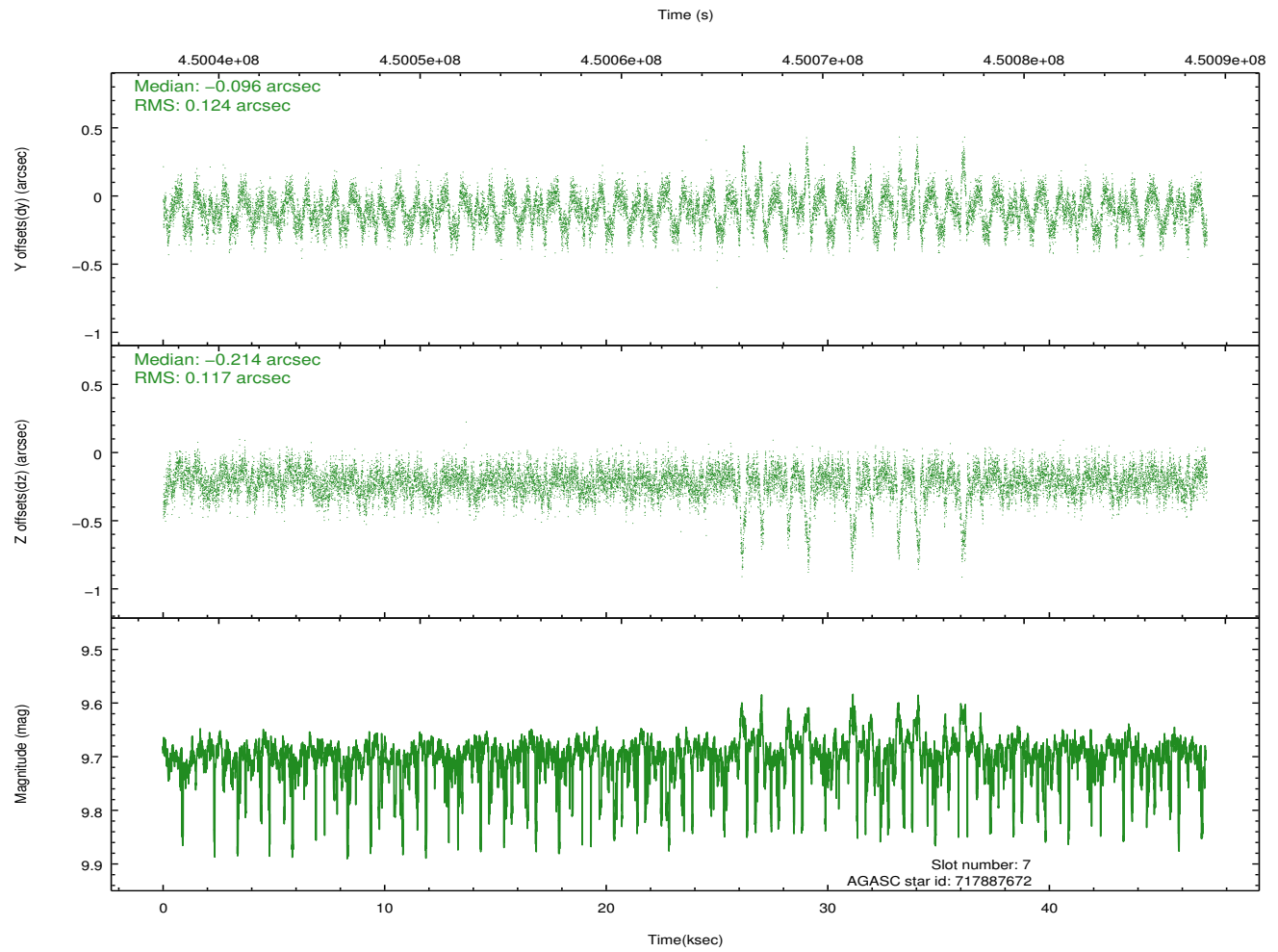
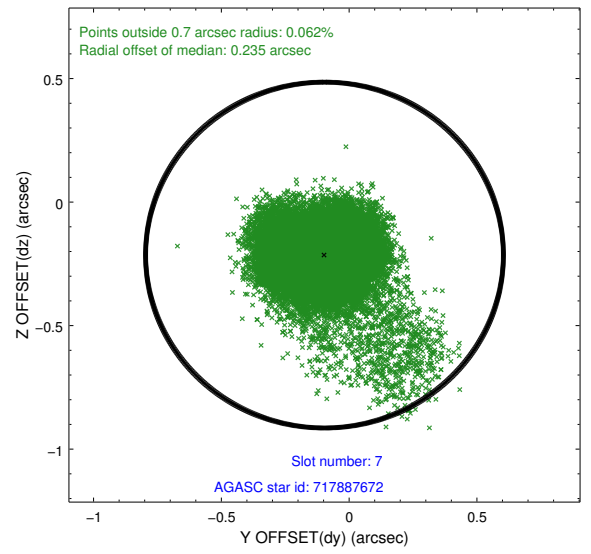
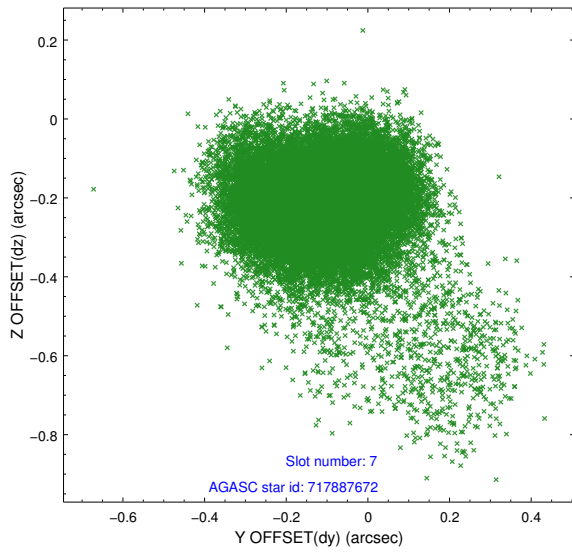
### 2.4.3 Slot 5



## 2.4.4 Slot 6

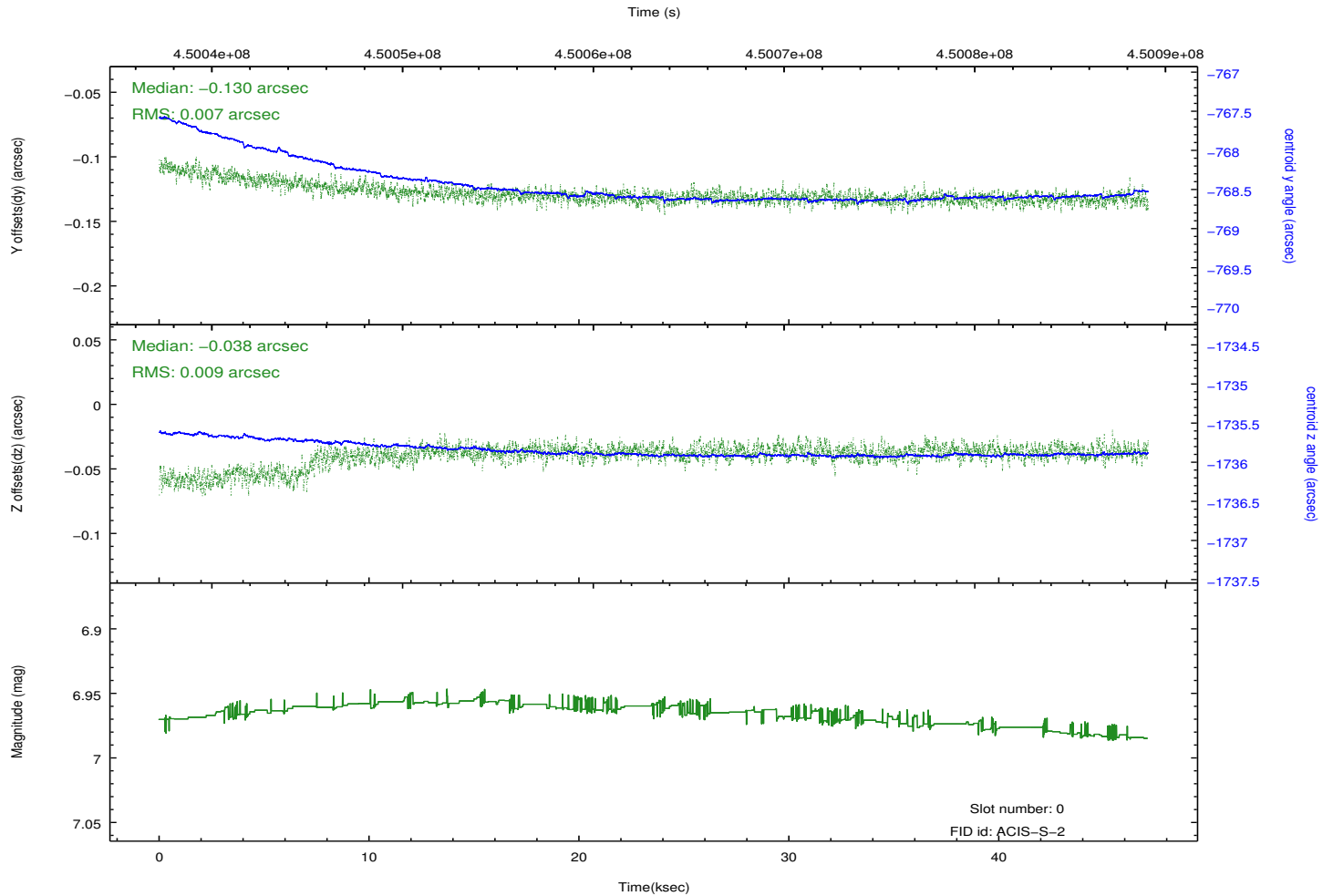
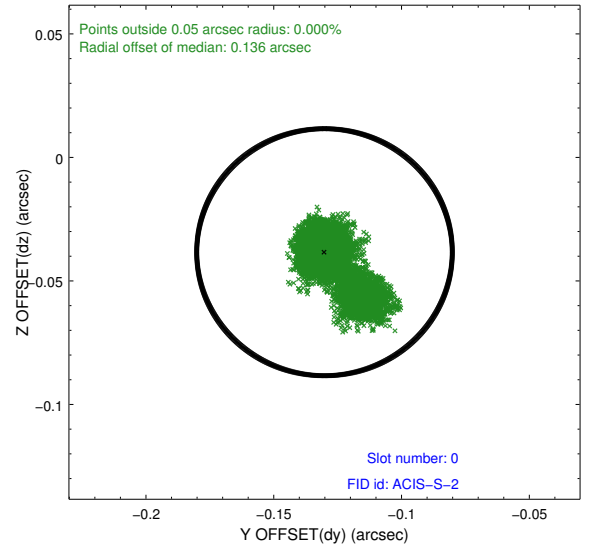
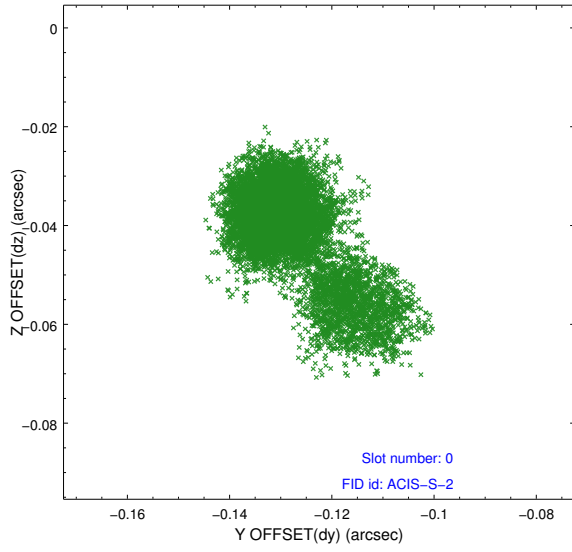


### 2.4.5 Slot 7

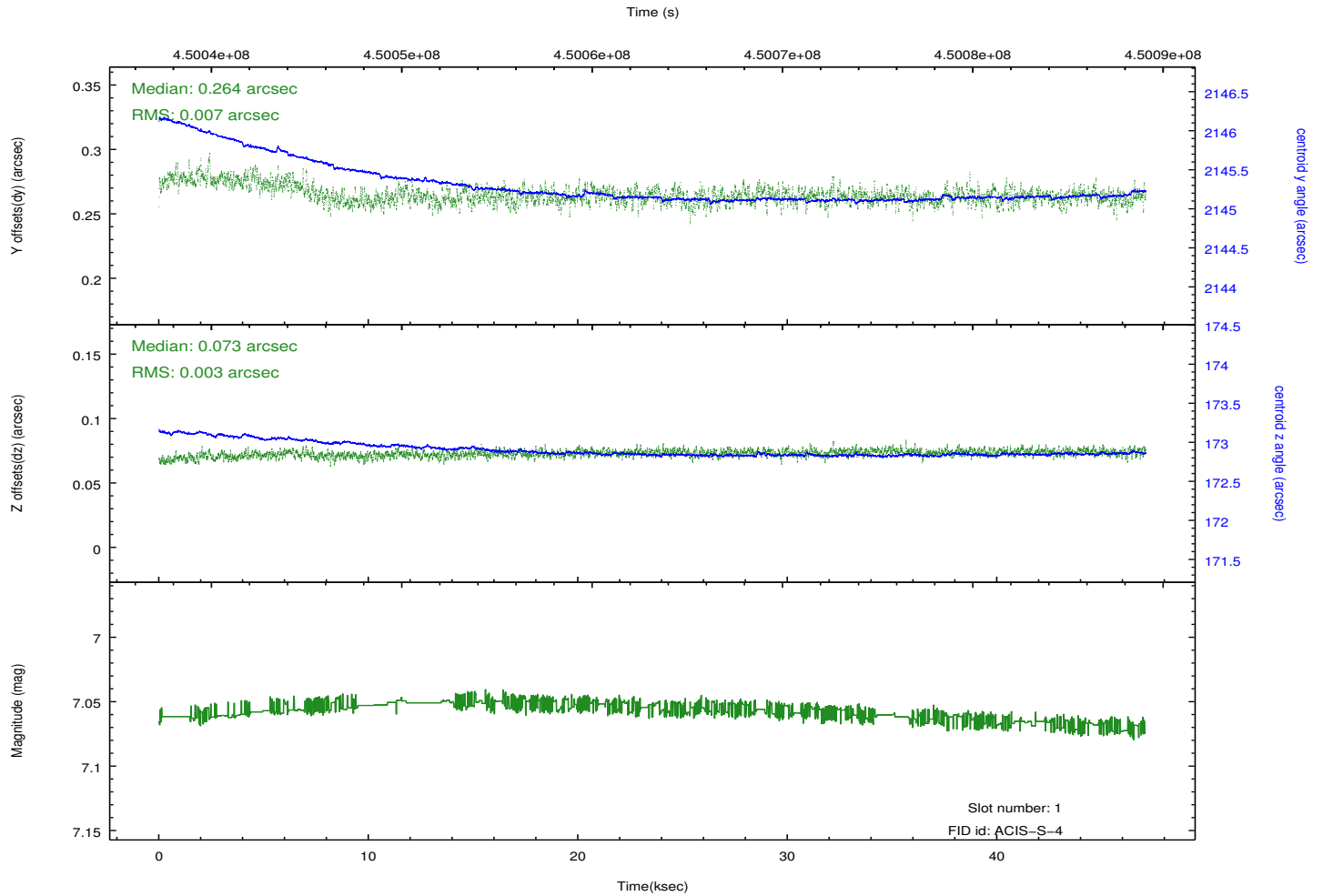
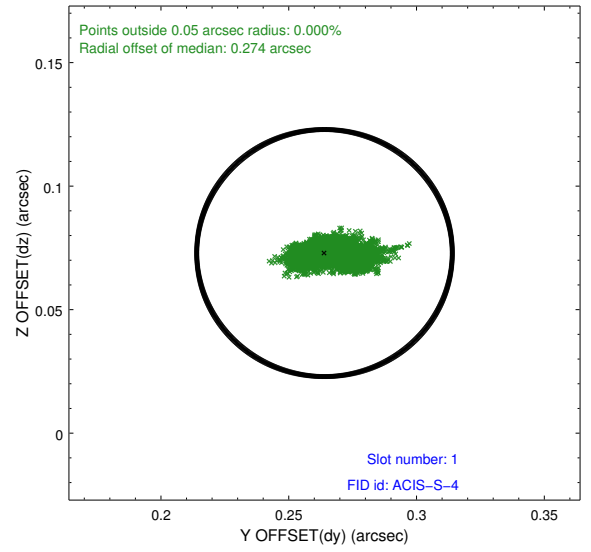
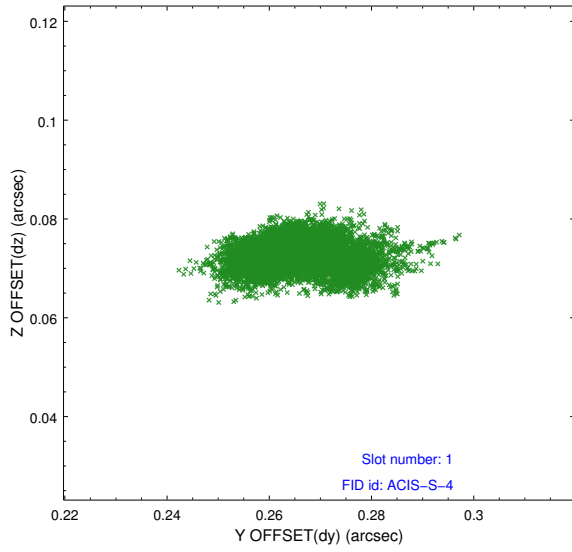


## 2.5 FID Slots

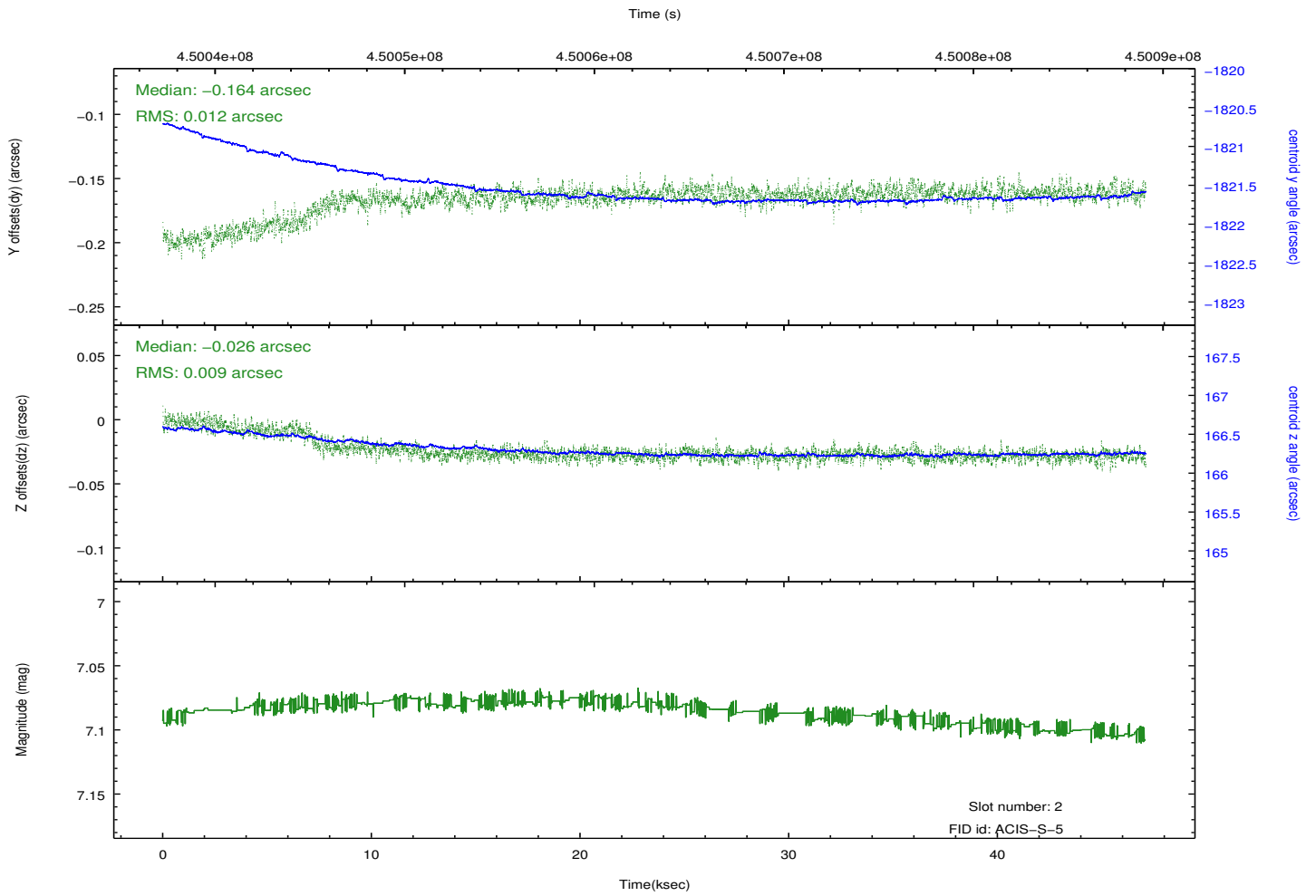
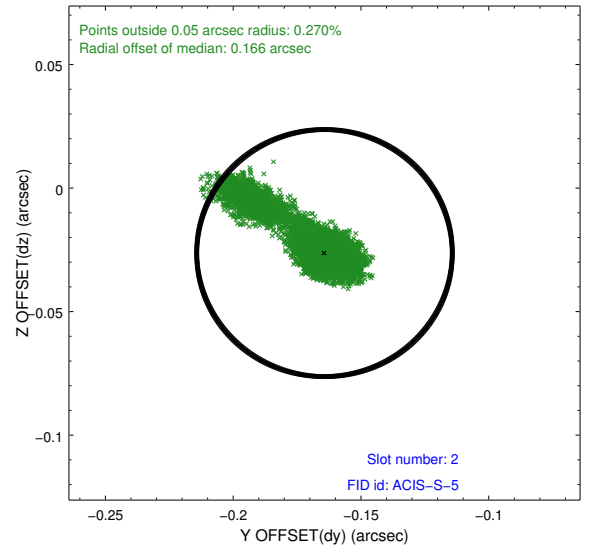
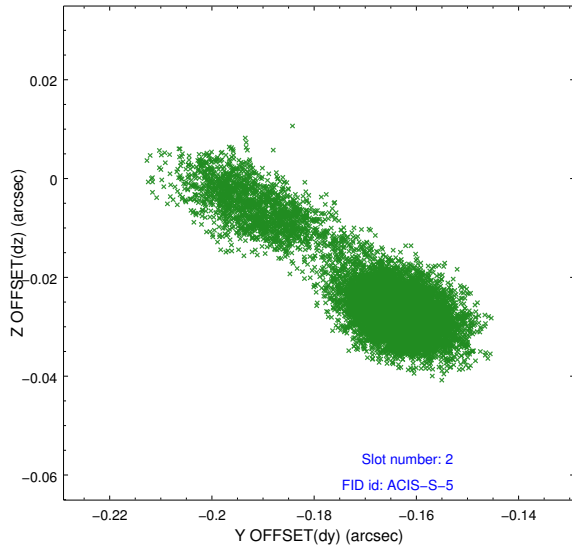
### 2.5.1 Slot 0



## 2.5.2 Slot 1



### 2.5.3 Slot 2



# A Summary

## A.1 Status

V&V Scientist	Jen Lauer
V&V Date (YYYY-MM-DD)	2012.04.08
V&V Edition	1
V&V Disposition and Status	OK
V&V Charge Time	46.893700360656

## A.2 Comments

Joint Proposal: HST