

V&V Reference Report

L2 ASCDS Version : 8.4.5

Observation 14449 - L2 Version 1
Chandra X-Ray Center

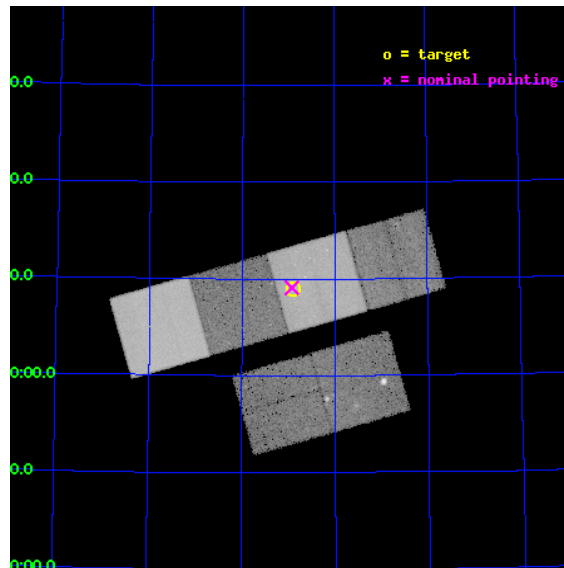
L2 Processing Date : Jun 27 2012

Contents

1	Front	2
2	OBI	3
2.1	OBI	3
2.1.1	Images	3
2.1.2	Bias	3
2.1.3	Parameters	4
2.1.4	Events	4
2.2	Compared Parameters	5
2.3	Aspect	6
2.4	Star Slots	9
2.4.1	Slot 3	9
2.4.2	Slot 4	10
2.4.3	Slot 5	11
2.4.4	Slot 6	12
2.4.5	Slot 7	13
2.5	FID Slots	14
2.5.1	Slot 0	14
2.5.2	Slot 1	15
2.5.3	Slot 2	16
A	Summary	17
A.1	Status	17
A.2	Comments	17

1 Front

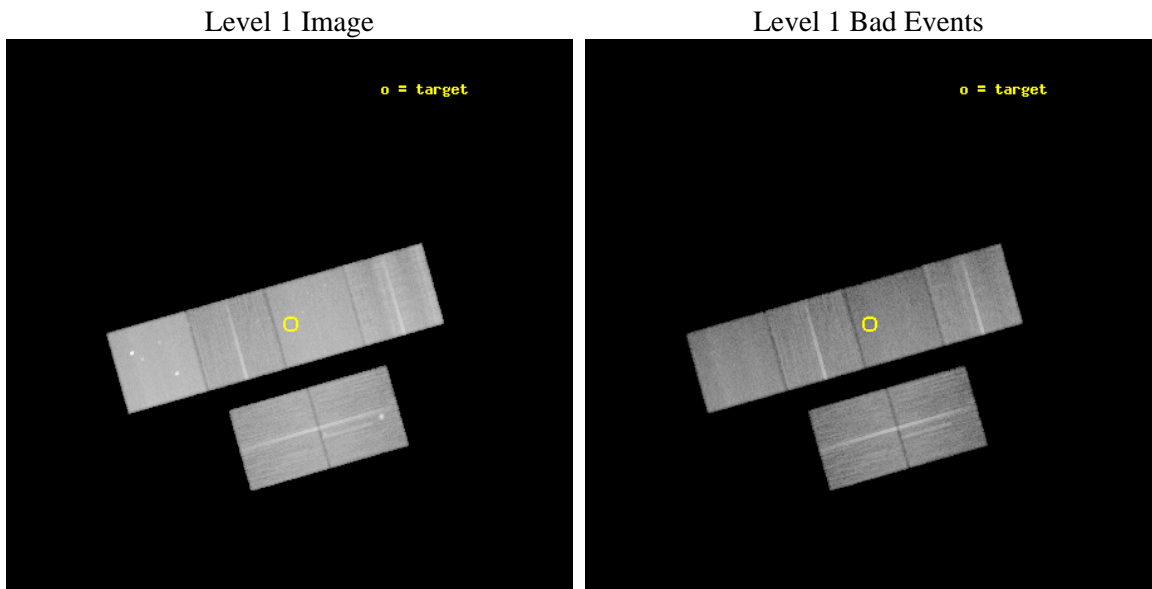
seq_num	801164	Sequence number
obs_id	14449	Observation id
title	The Impact of Brightest Cluster Galaxy Formation on the Intracluster Medium	Proposal title
observer	Dr. John Mulchaey	Principal investigator
object	RXJ0720.8+7109	Source name
dtycle	0	
cycle	P	events from which exps? Prim/Second/Both
ra_targ	110.225	Observer's specified target RA [deg]
dec_targ	71.149444	Observer's specified target Dec [deg]
ra_nom	110.23201277617	Nominal RA [deg]
dec_nom	71.151450264599	Nominal Dec [deg]
roll_nom	344.15000283626	Nominal Roll [deg]
revision	1	Processing version of data
ontime	37963.627917111	Sum of GTIs [s]
livetime	37482.909601472	Livetime [s]
ontime2	37960.427986801	Sum of GTIs [s]
ontime3	37963.504797101	Sum of GTIs [s]
ontime5	37963.586877108	Sum of GTIs [s]
ontime6	37960.304866731	Sum of GTIs [s]
ontime7	37963.627917111	Sum of GTIs [s]
ontime8	37963.463757098	Sum of GTIs [s]
l2events	384098	Number of level 2 events



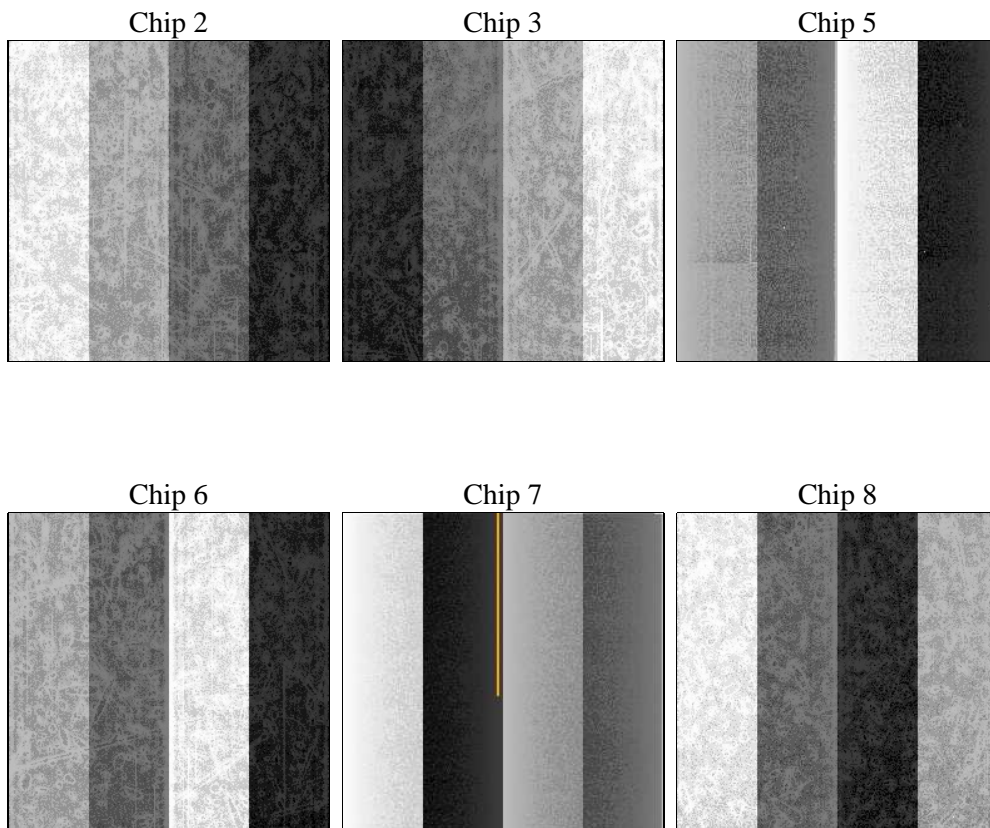
2 OBI

2.1 OBI

2.1.1 Images



2.1.2 Bias



2.1.3 Parameters

obi_num	0	Obi number	sched_exp_time	38000.000000	[s] Scheduled observation exposure time
ascdsver	8.4.5	Processing system revision	ontime	37963.627917111	Sum of GTIs [s]
caldbver	4.5.0	 	ontime2	37960.427986801	Sum of GTIs [s]
date	2012-06-27T16:55:31	Date and time of file creation	ontime3	37963.504797101	Sum of GTIs [s]
revision	1	Processing version of data	ontime5	37963.586877108	Sum of GTIs [s]
			ontime6	37960.304866731	Sum of GTIs [s]
			ontime7	37963.627917111	Sum of GTIs [s]
			ontime8	37963.463757098	Sum of GTIs [s]
			l1events	1607062	Number of level 1 events

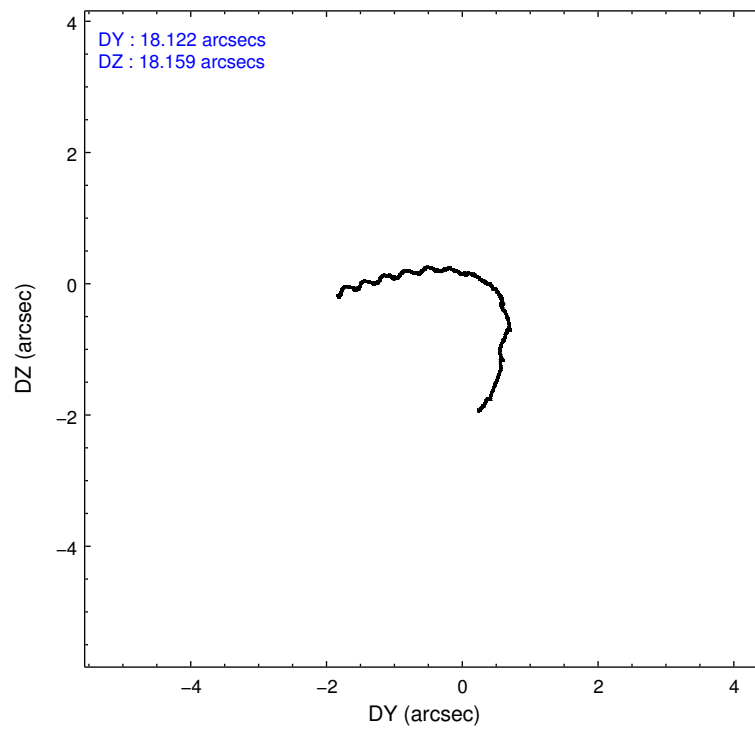
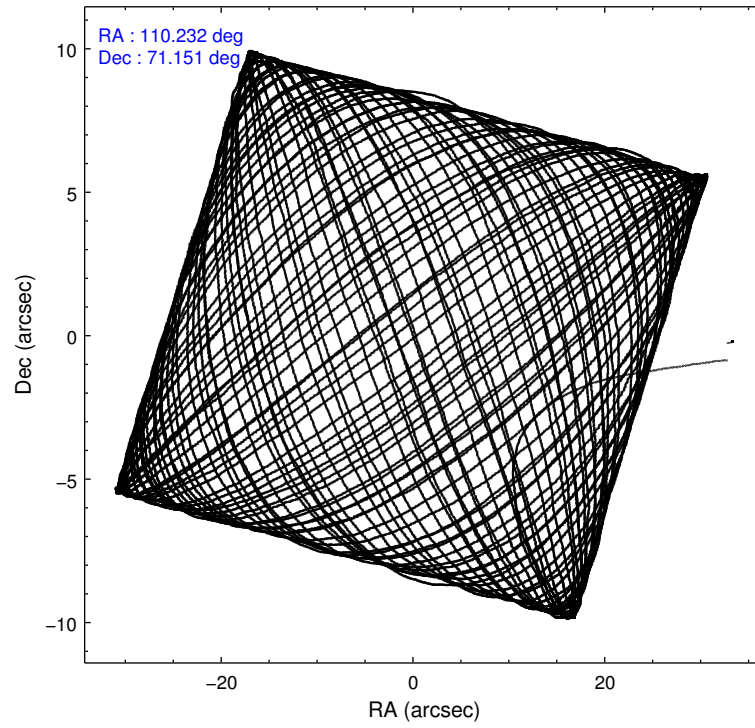
2.1.4 Events

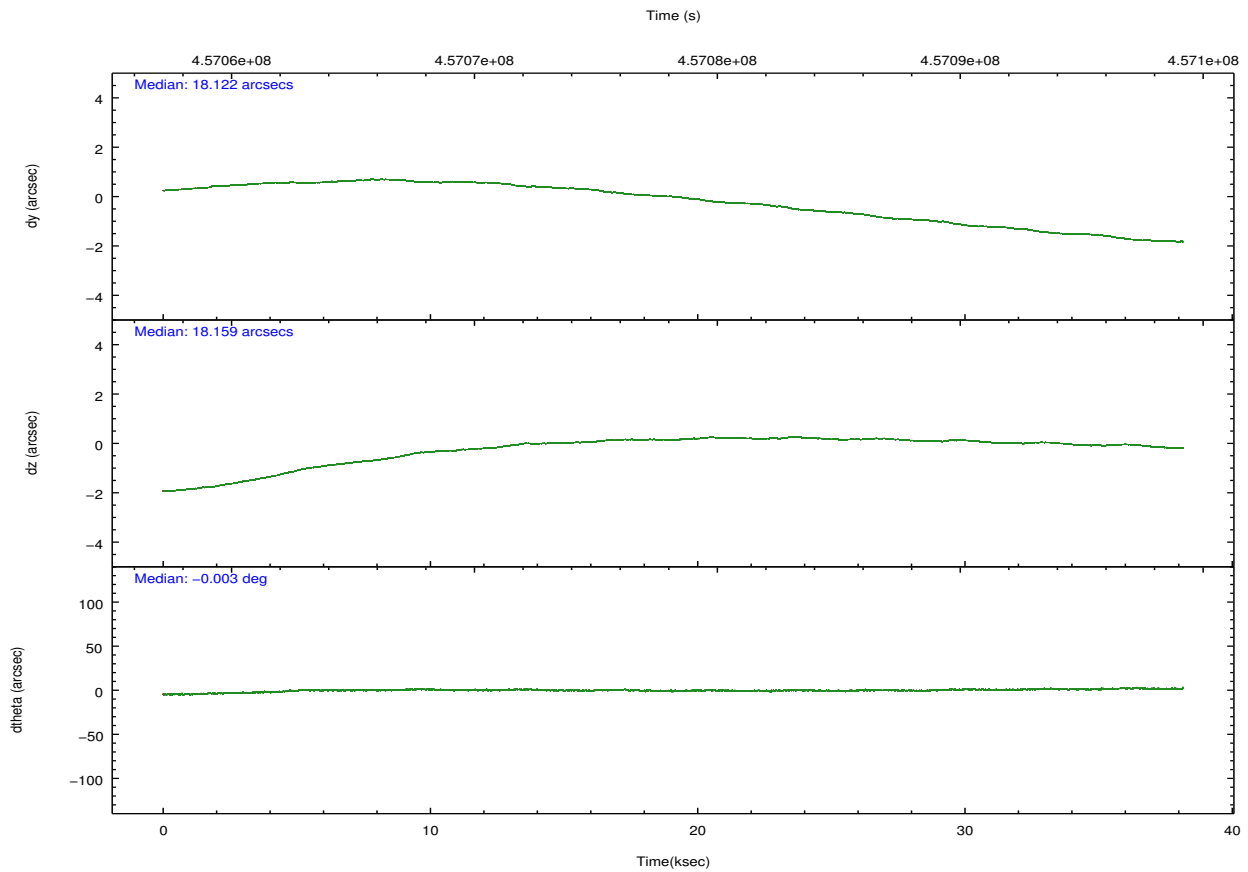
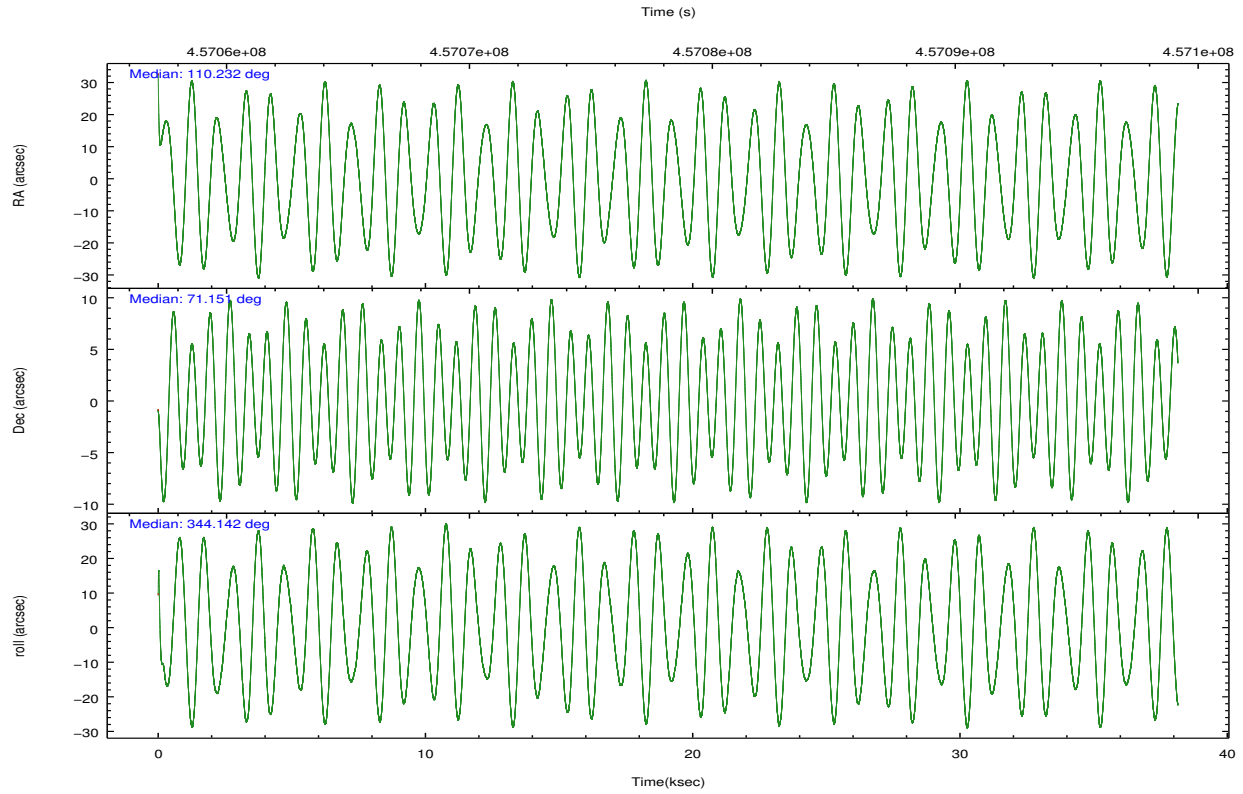
	ccd 2	ccd 3	ccd 5	ccd 6	ccd 7	ccd 8		ccd 2	ccd 3	ccd 5	ccd 6	ccd 7	ccd 8
level 1 events	224103	216810	357685	224764	291706	291994	grade 0 events	8717	11163	18340	9090	12089	22800
rejected events	199286	189616	181627	198403	161459	214752		3%	5%	5%	4%	4%	7%
rejected %	88%	87%	50%	88%	55%	73%	grade 1 events	137	157	777	97	354	212
								0%	0%	0%	0%	0%	0%
							grade 2 events	6131	5706	53123	5933	26997	18146
								2%	2%	14%	2%	9%	6%
							grade 3 events	2550	2696	6413	2732	11325	8024
								1%	1%	1%	1%	3%	2%
							grade 4 events	2508	2696	6071	2734	11324	7625
								1%	1%	1%	1%	3%	2%
							grade 5 events	9391	10875	26844	11161	29966	15940
								4%	5%	7%	4%	10%	5%
							grade 6 events	4917	4942	92123	5873	68521	20650
								2%	2%	25%	2%	23%	7%
							grade 7 events	189752	178575	153994	187144	131130	198597
								84%	82%	43%	83%	44%	68%

2.2 Compared Parameters

Parameter	Planned	Actual	Parameter	Planned	Actual
Instrument	ACIS	ACIS	Obspar format version number	7	7
Detector	ACIS-235678	ACIS-235678	Obspar file type	PREDICTED	ACTUAL
Grating	NONE	NONE	Obspar update status	NONE	UPDATED
Data mode	VFAINT	VFAINT	CCD I0 on	N	N
Observation mode	POINTING	POINTING	CCD I1 on	N	N
[deg] Pointing RA	110.150239	110.2320127761712	CCD I2 on	O3	Y
[deg] Pointing Dec	71.144385	71.15145026459876	CCD I3 on	O4	Y
[deg] Pointing Roll	344.070748	344.1500028362609	CCD S0 on	N	N
[mm] SIM focus pos	-0.684267	-0.6828225247311905	CCD S1 on	O5	Y
[mm] SIM defocus	0	0.001444936568705701	CCD S2 on	O1	Y
[mm] SIM translation stage pos	-190.132523	-190.1400660498719	CCD S3 on	Y	Y
[mm] SIM translation stage offset	0	0.00754346686406393	CCD S4 on	O2	Y
[s] Observation start time (MET)	457059259.184000	457058207.54089	CCD S5 on	N	N
Observation start date	2012-06-26T00:53:13	2012-06-26T00:36:47	Number of optional ACIS chips dropped	0	0
[s] Observation end time (MET)	457097259.184000	457097994.96803	On-chip summing requested	N	N
Observation end date	2012-06-26T11:26:33	2012-06-26T11:39:54	Subarray requested	NONE	NONE
Read mode	TIMED	TIMED	Alternating exposures requested	N	N
			[s] Primary exposure time	0.000000	3.2

2.3 Aspect



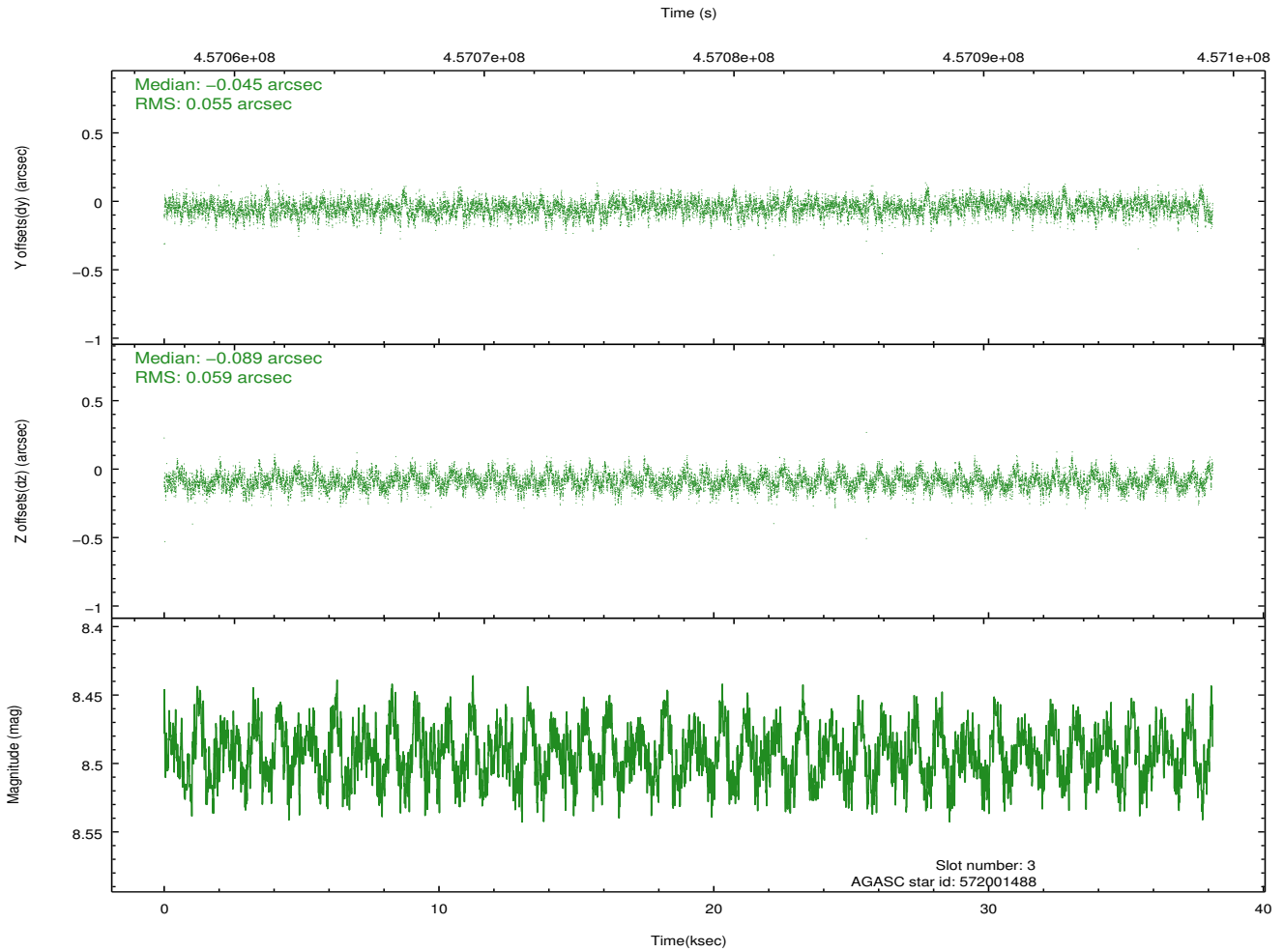
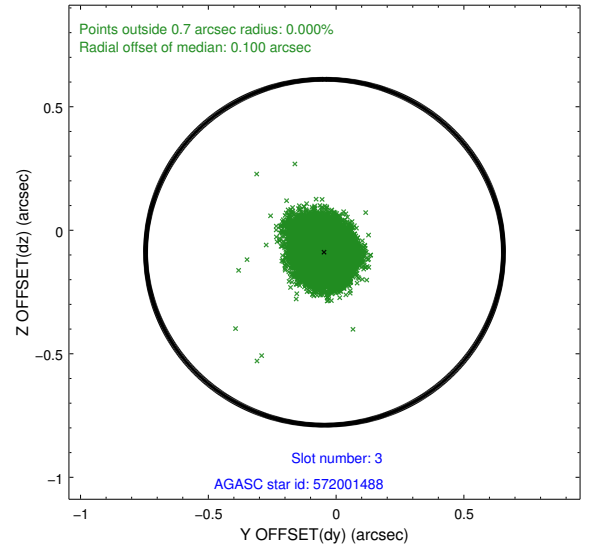
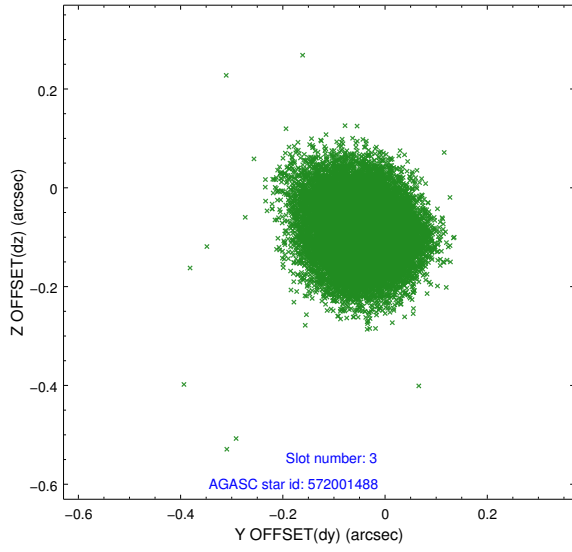


Slot Statistics

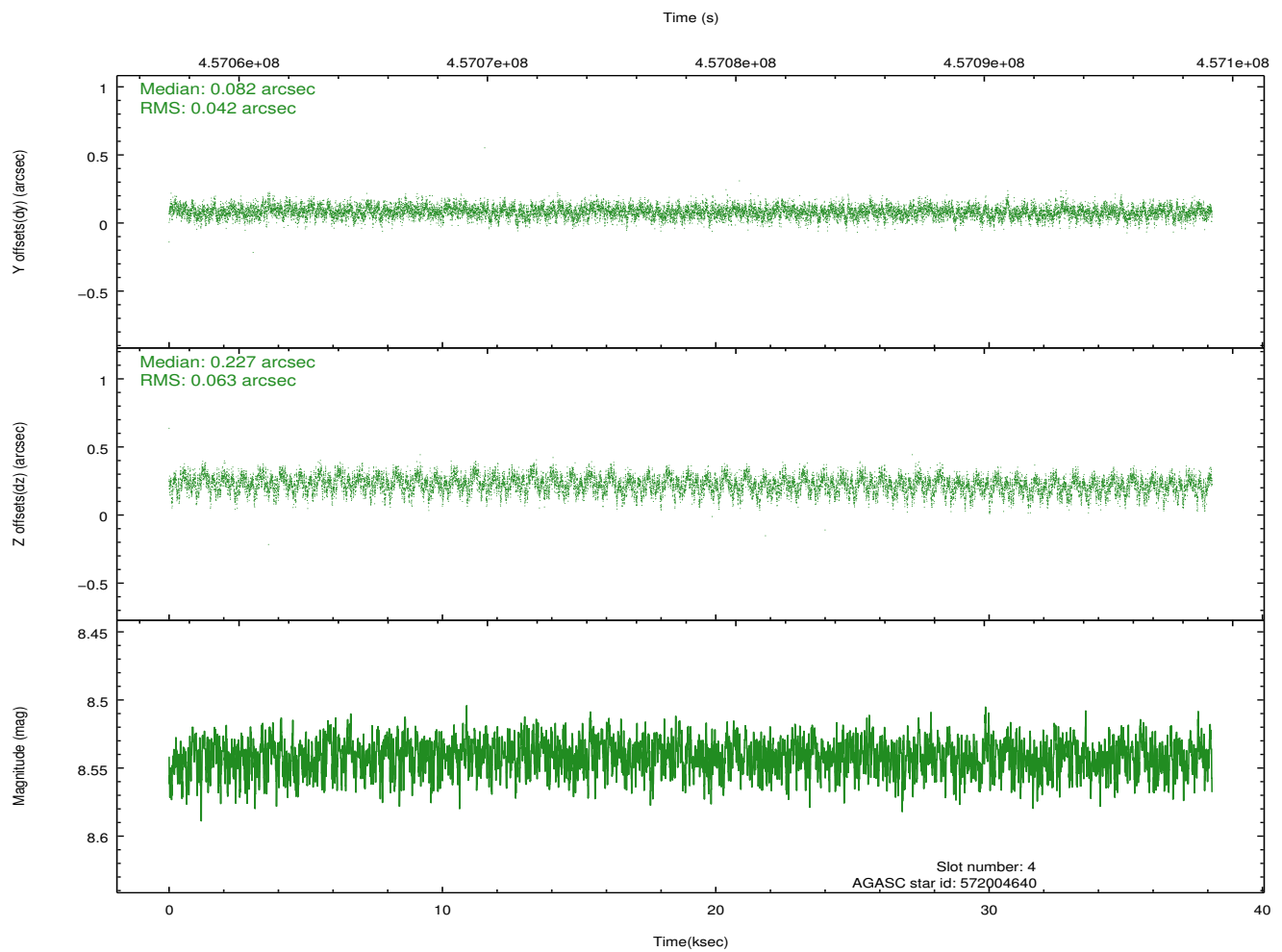
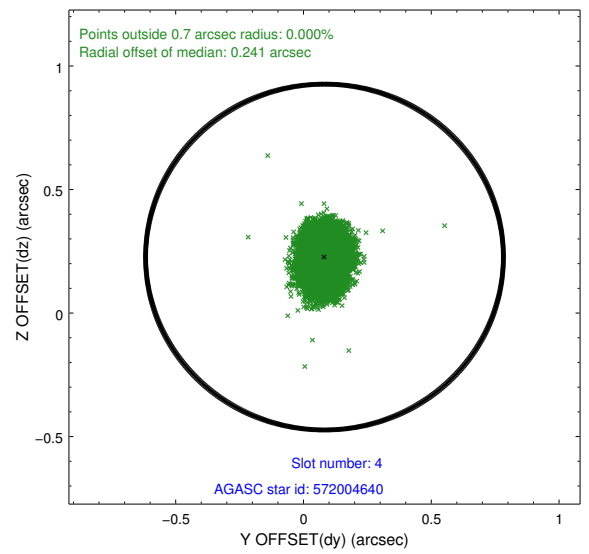
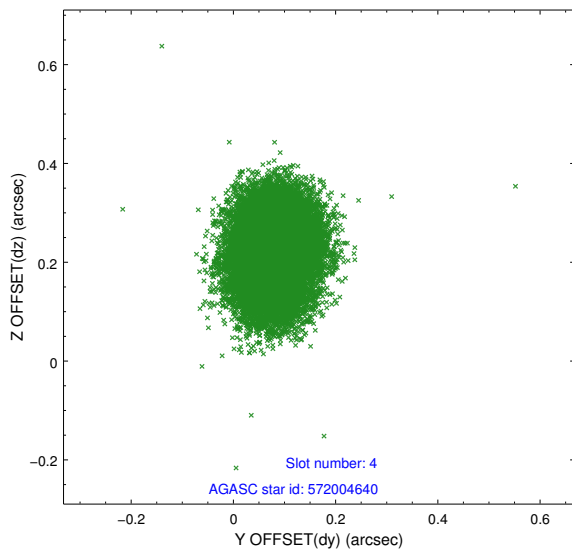
slot	status	id	mag	n_pts	med_dy	med_dz	dr1	dr2	ra	dec	mean_y	mean_z
0	FID	ACIS-S-2	6.91	9307	-0.095	-0.056	0.011	0.042	0.000000	0.000000	-771.02	-1739.39
1	FID	ACIS-S-4	7.00	9305	0.256	0.060	0.030	0.046	0.000000	0.000000	2142.61	169.14
2	FID	ACIS-S-5	7.03	9307	-0.192	0.004	0.031	0.044	0.000000	0.000000	-1823.90	162.83
3	GUIDE	572001488	8.49	18610	-0.045	-0.089	0.086	0.137	111.139482	70.686443	1582.89	-1252.49
4	GUIDE	572004640	8.54	18602	0.082	0.227	0.080	0.130	109.587132	70.919385	-415.14	-957.53
5	GUIDE	572527568	9.07	18604	-0.132	-0.190	0.092	0.153	109.983500	71.809635	-837.80	2251.39
6	GUIDE	572529680	9.29	18604	0.062	0.120	0.099	0.161	109.202854	71.554732	-1445.22	1132.73
7	GUIDE	572531952	8.59	18607	0.031	-0.066	0.086	0.139	110.007920	71.254600	-266.58	336.20

2.4 Star Slots

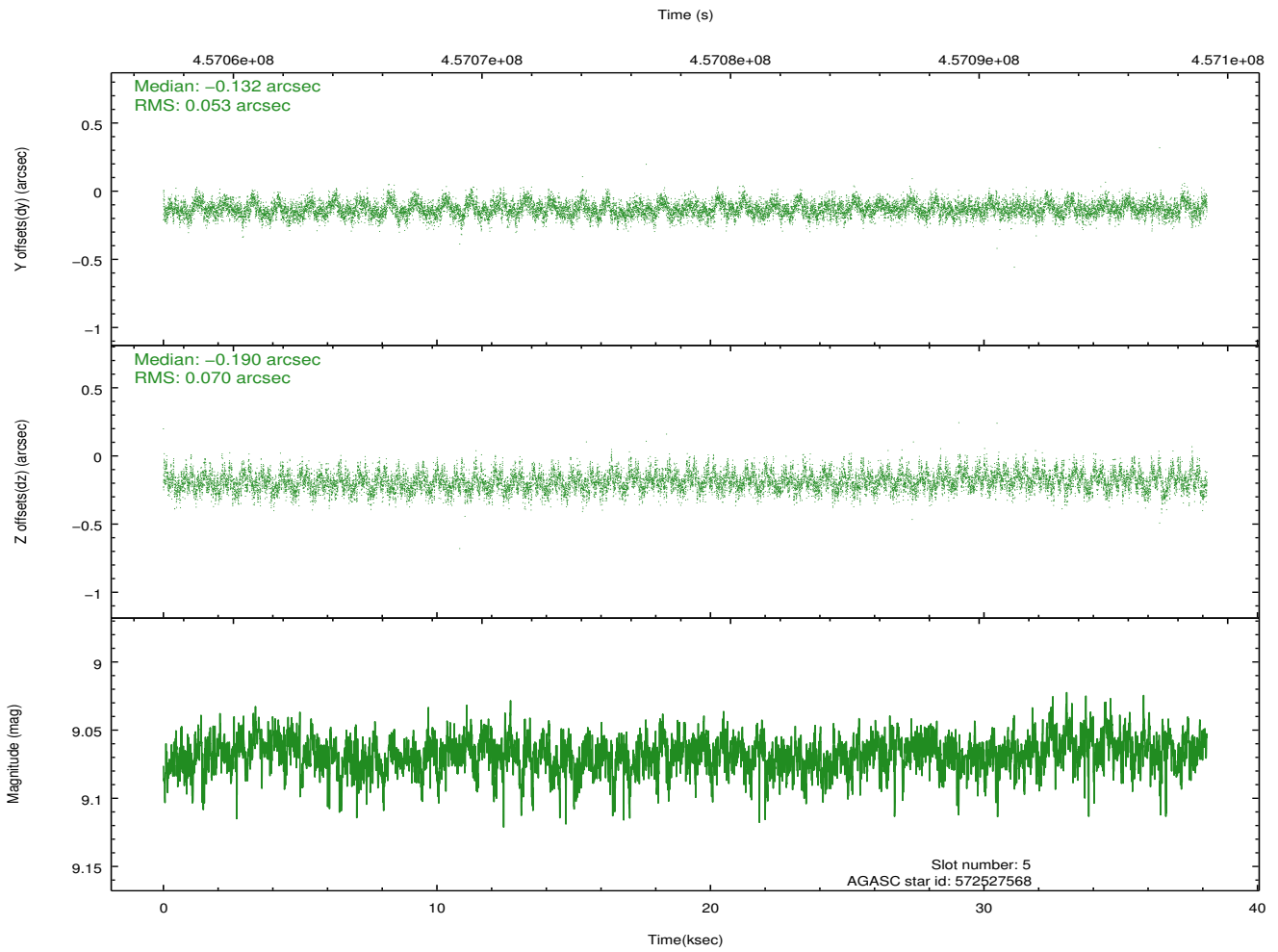
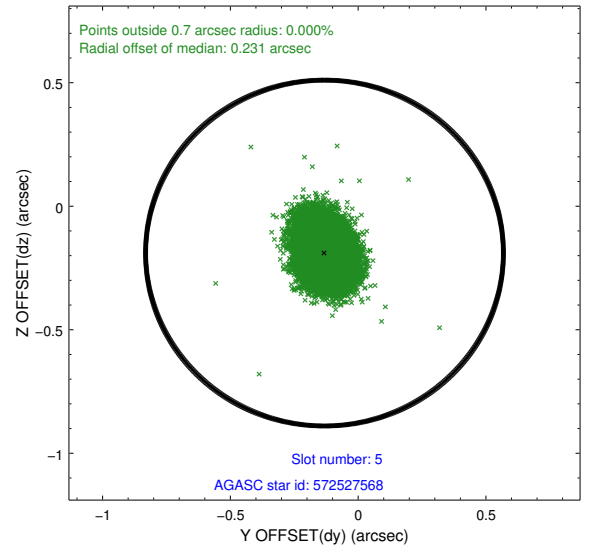
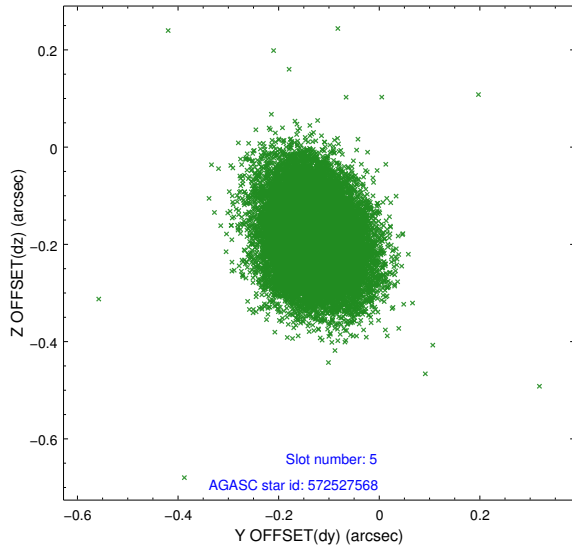
2.4.1 Slot 3



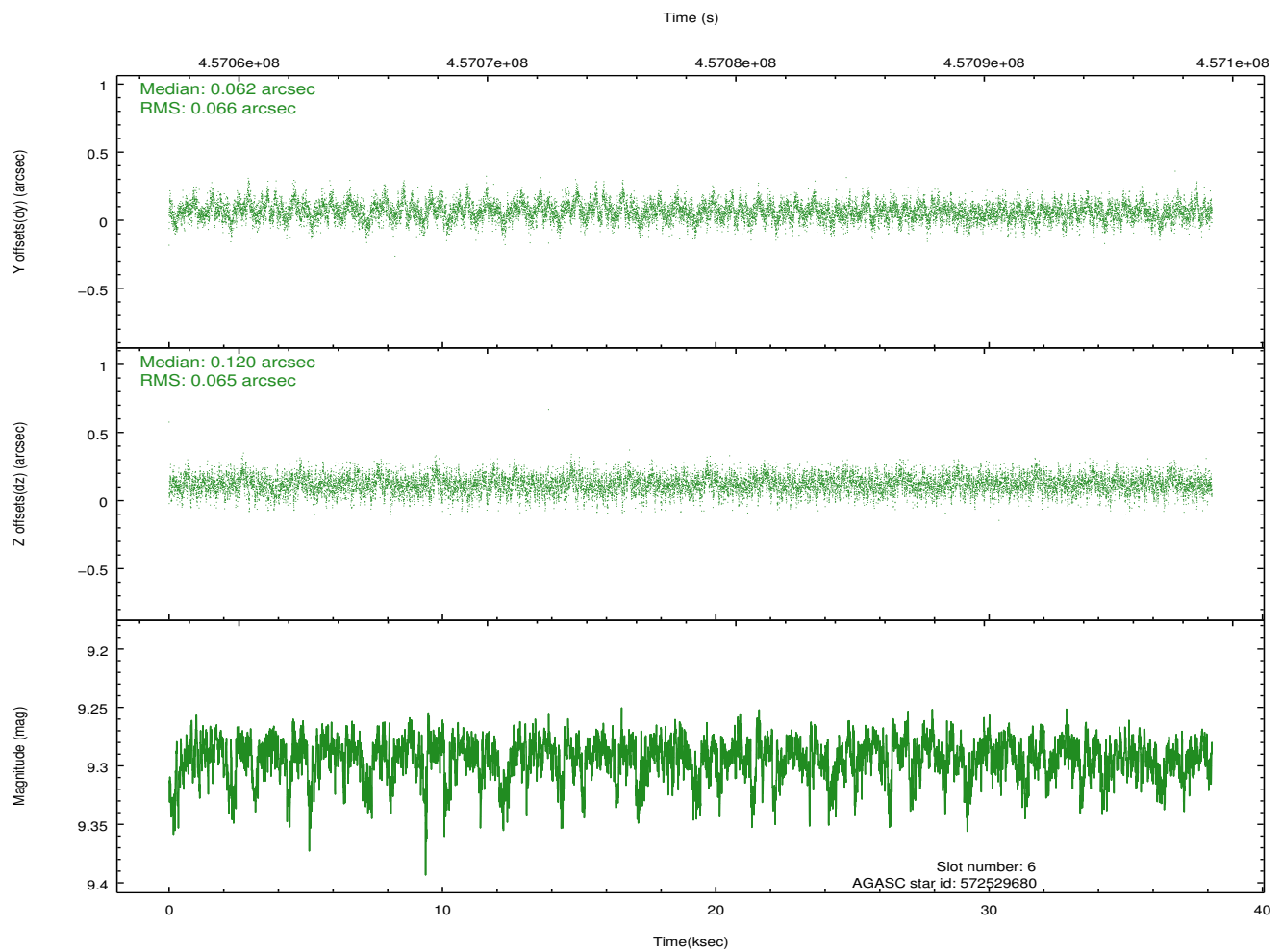
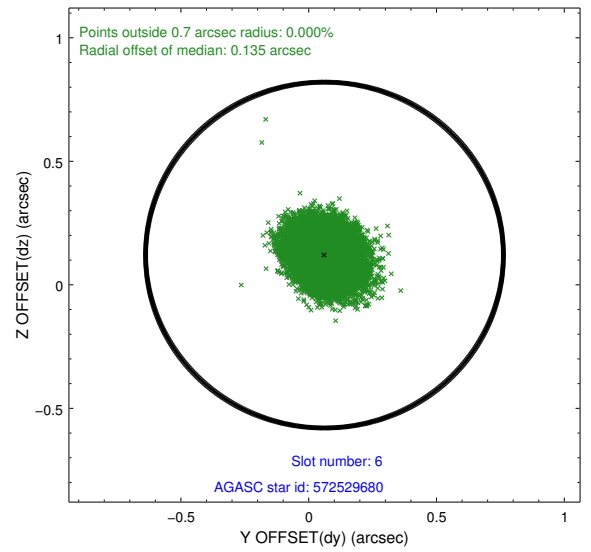
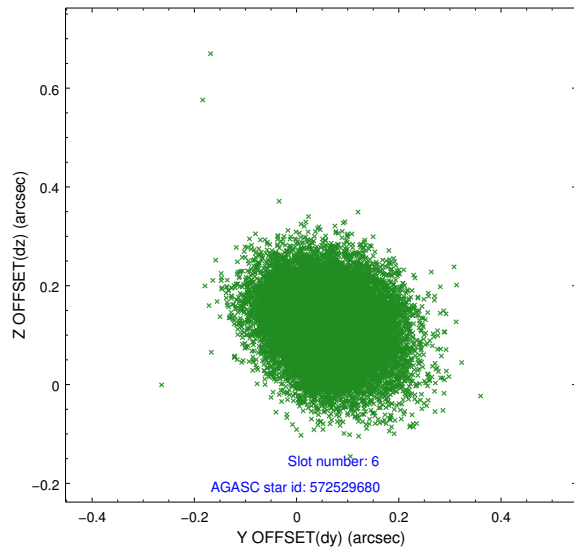
2.4.2 Slot 4



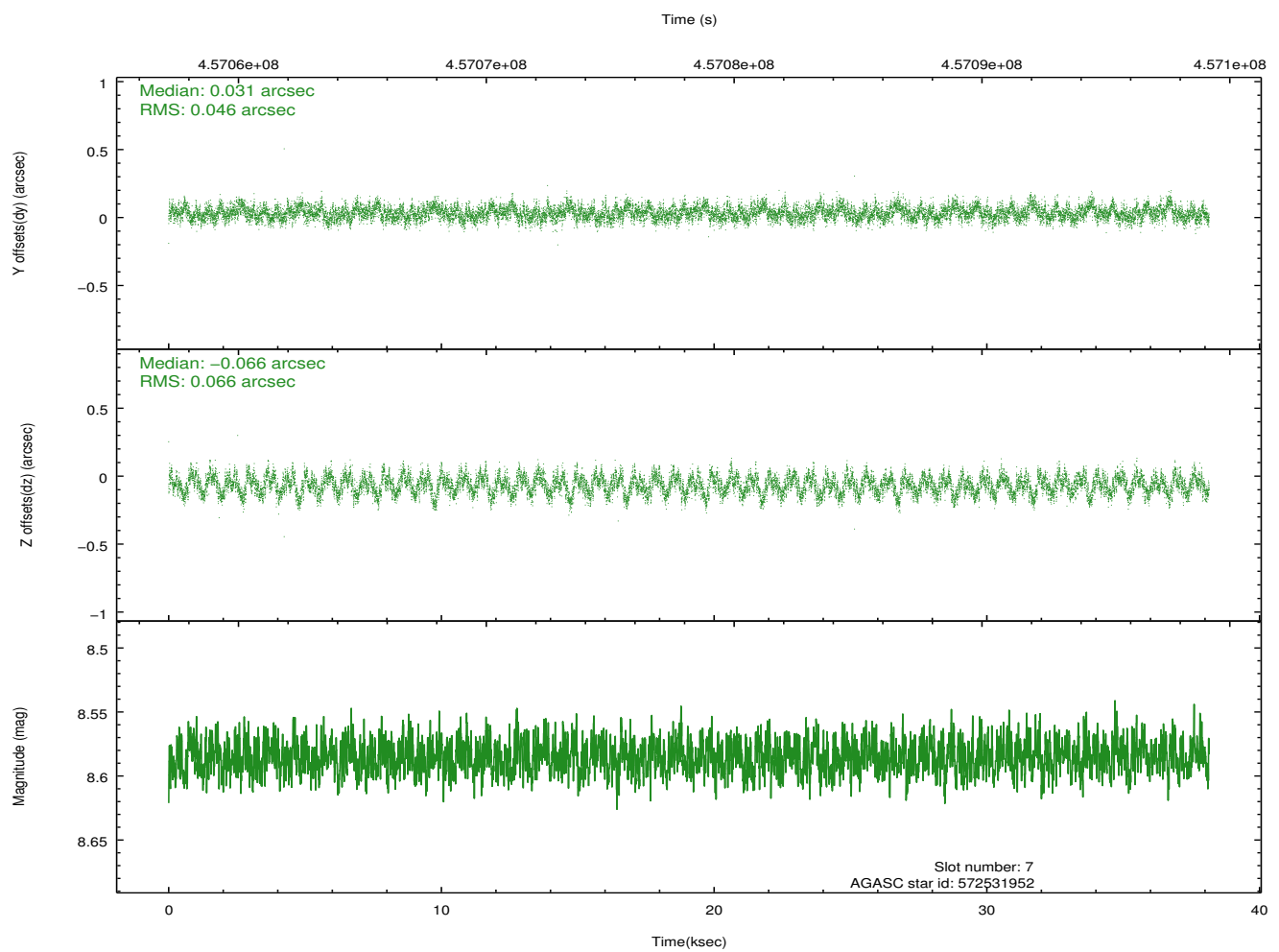
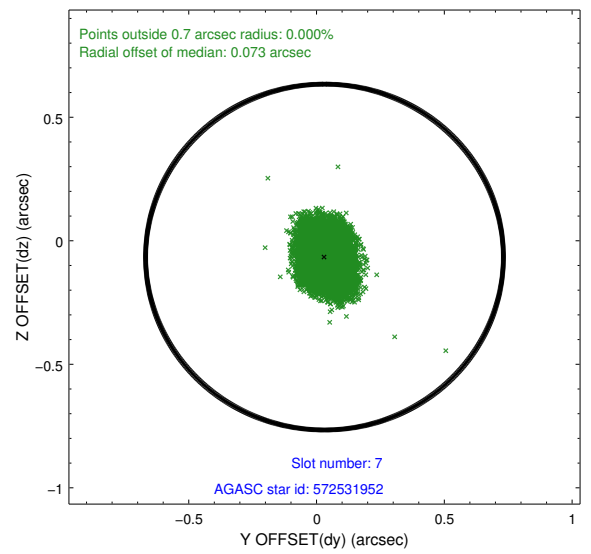
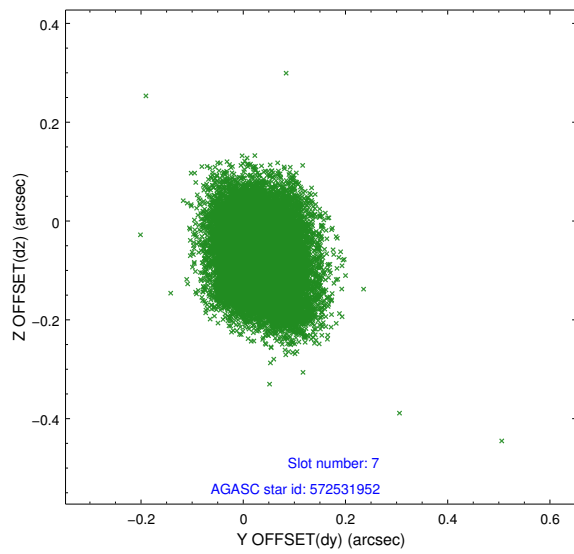
2.4.3 Slot 5



2.4.4 Slot 6

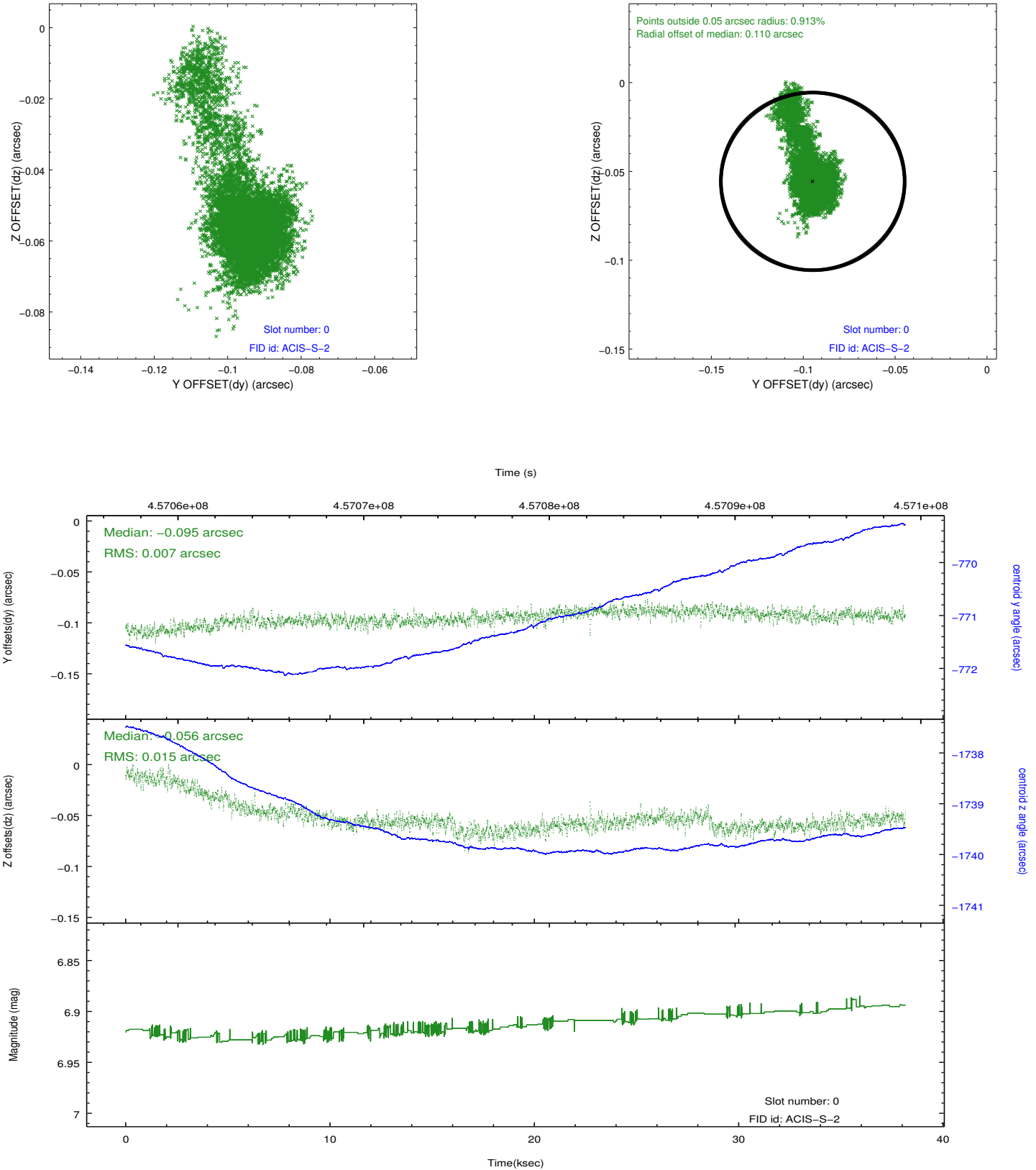


2.4.5 Slot 7

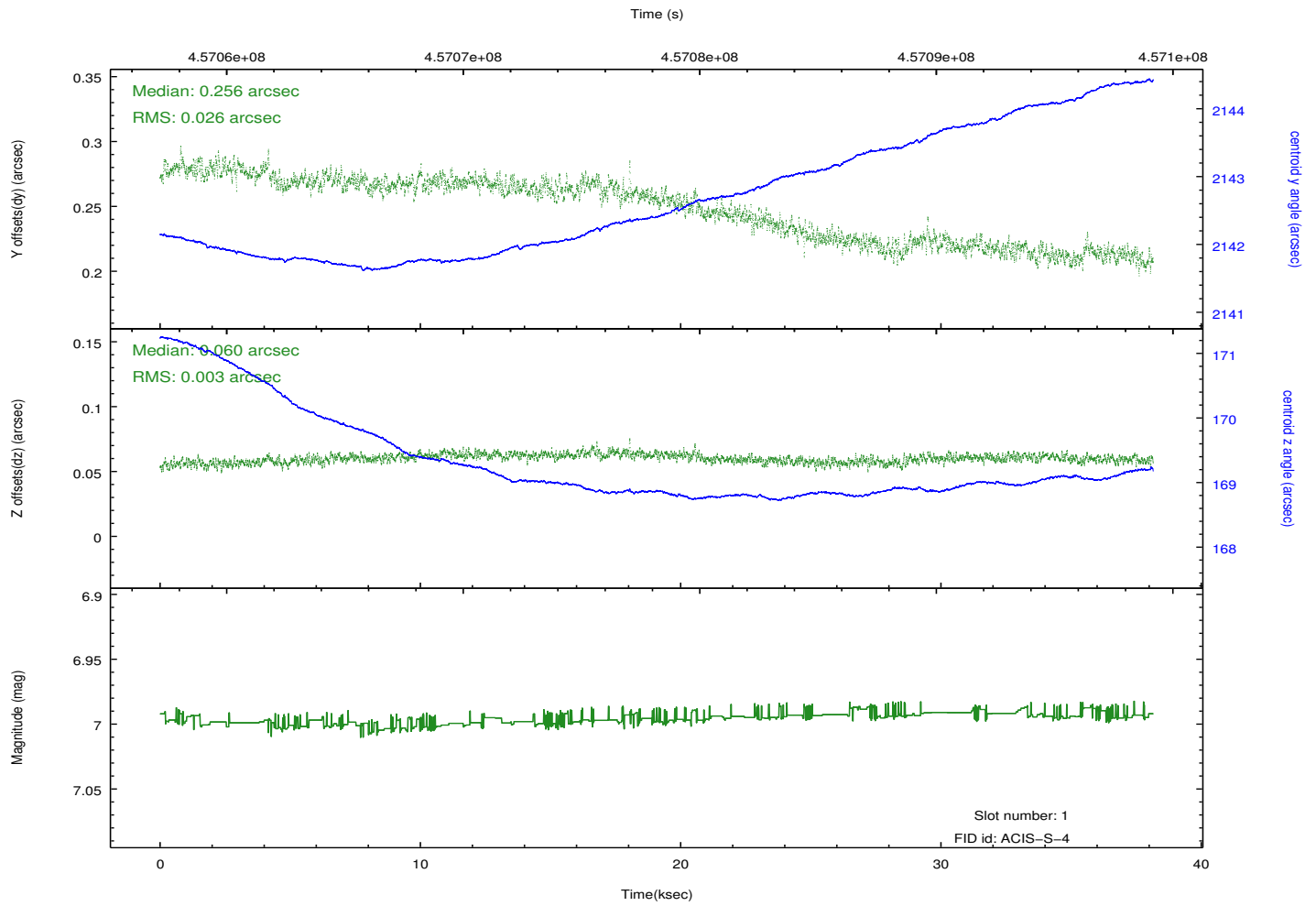
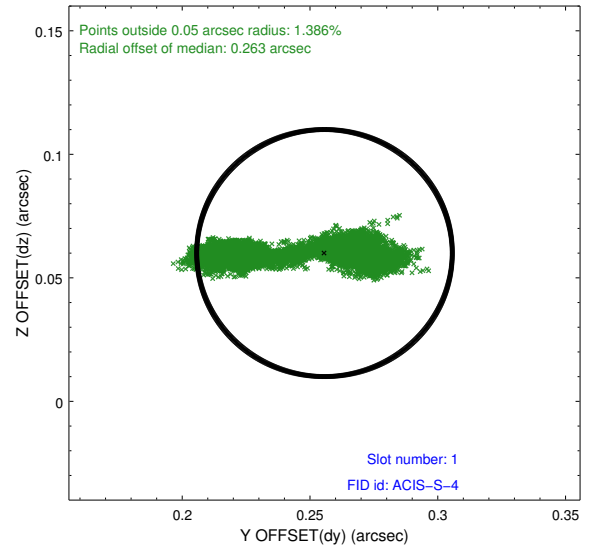
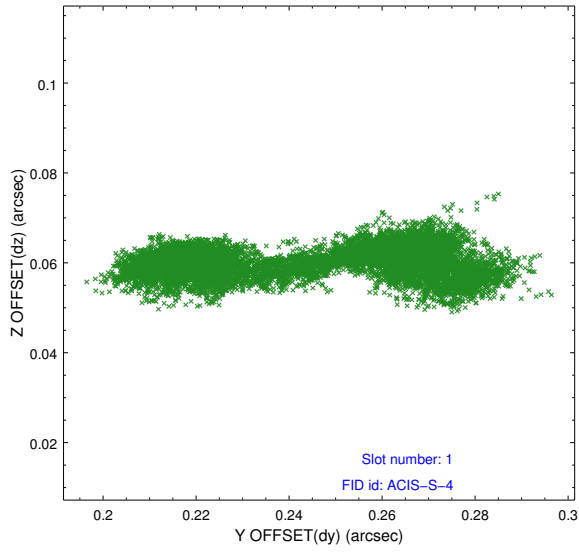


2.5 FID Slots

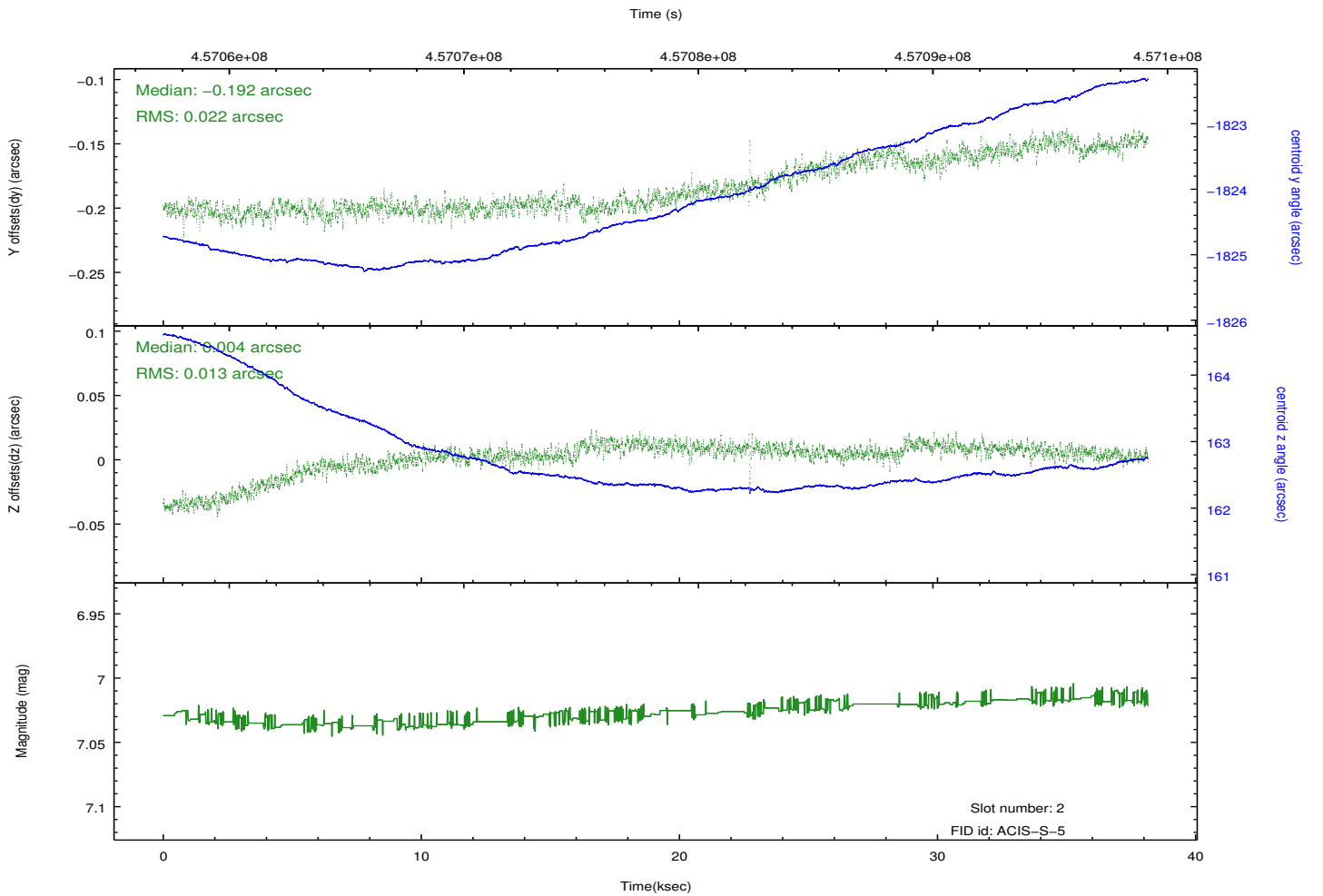
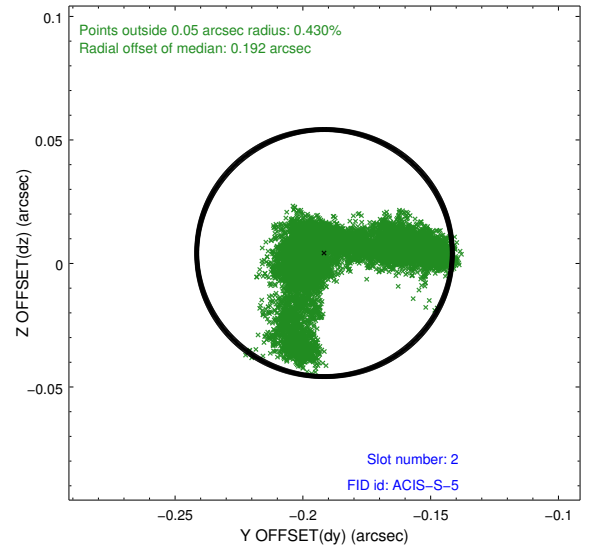
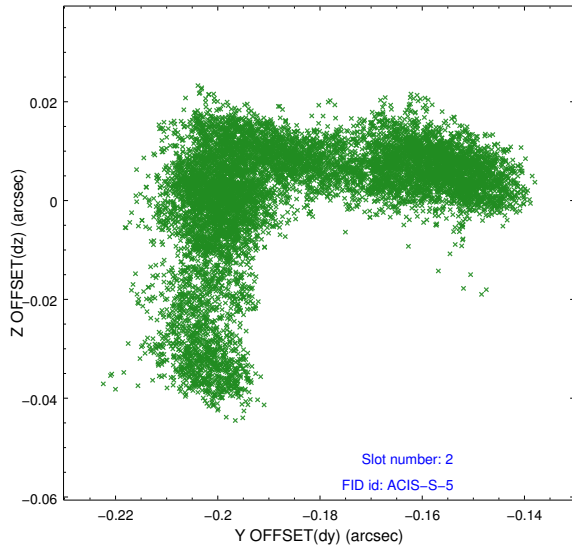
2.5.1 Slot 0



2.5.2 Slot 1



2.5.3 Slot 2



A Summary

A.1 Status

V&V Scientist	Joy Nichols
V&V Date (YYYY-MM-DD)	2012.06.28
V&V Edition	1
V&V Disposition and Status	OK
V&V Charge Time	37.963627917111

A.2 Comments