

V&V Reference Report

L2 ASCDS Version : 8.1.1

Observation 1479 - L2 Version 4
Chandra X-Ray Center

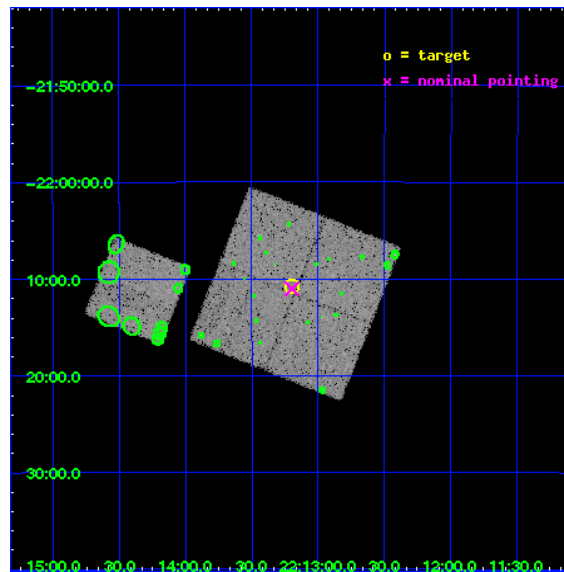
L2 Processing Date : Nov 24 2009

Contents

1	Front	2
2	OBI	3
2.1	OBI	3
2.1.1	Images	3
2.1.2	Bias	3
2.1.3	Parameters	4
2.1.4	Events	4
2.2	Compared Parameters	5
2.3	Aspect	6
2.4	Star Slots	9
2.4.1	Slot 3	9
2.4.2	Slot 4	10
2.4.3	Slot 5	11
2.4.4	Slot 6	12
2.4.5	Slot 7	13
2.5	FID Slots	14
2.5.1	Slot 0	14
2.5.2	Slot 1	15
2.5.3	Slot 2	16
3	Point Sources	17
A	Summary	18
A.1	Status	18
A.2	Comments	18

1 Front

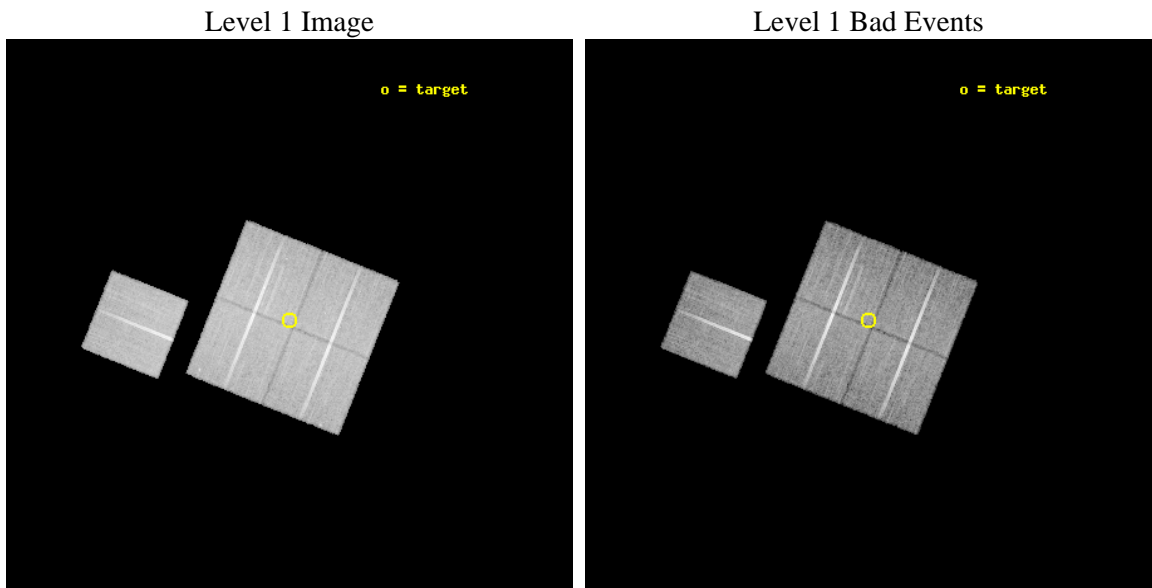
seq_num	980429	Sequence number
obs_id	1479	Observation id
title	 	Proposal title
observer	Dr. CXC Calibration	Principal investigator
object	LEONID ANTI-RADIANT	Source name
dtcycle	0	
cycle	P	events from which exps? Prim/Second/Both
ra_targ	333.2996	Observer's specified target RA
dec_targ	-22.17863	Observer's specified target Dec
ra_nom	333.29947108712	Nominal RA
dec_nom	-22.183856430126	Nominal Dec
roll_nom	291.81611083842	Nominal Roll
revision	4	Processing version of data
ontime	20774.359039202	Sum of GTIs [s]
livetime	20511.301596231	Livetime [s]
ontime0	20777.600019351	Sum of GTIs [s]
ontime1	20777.600019351	Sum of GTIs [s]
ontime2	20777.600019351	Sum of GTIs [s]
ontime3	20774.359039202	Sum of GTIs [s]
ontime6	20774.35905914	Sum of GTIs [s]
l2events	79519	Number of level 2 events



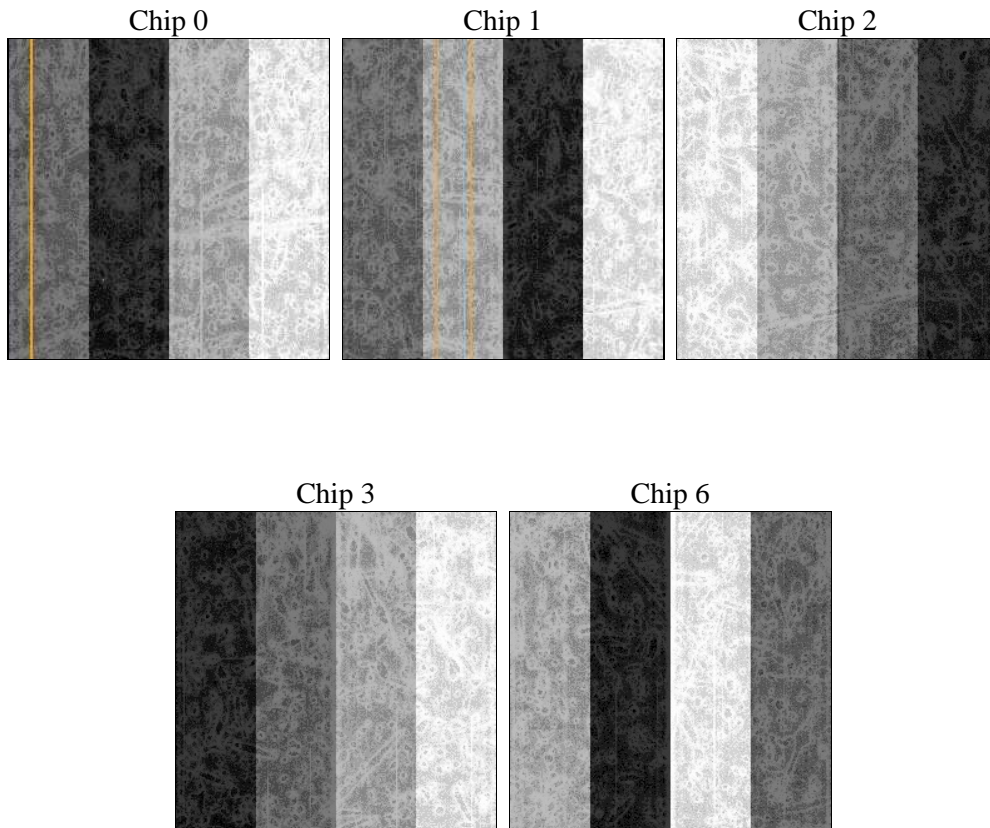
2 OBI

2.1 OBI

2.1.1 Images



2.1.2 Bias



2.1.3 Parameters

obi_num	0	Obi number	sched_exp_time	21600.000000	Scheduled observation exposure time
ascdsver	8.1.1	ASCDS version number	ontime	20774.359039202	Sum of GTIs [s]
caldbver	4.1.4	 	ontime0	20777.600019351	Sum of GTIs [s]
date	2009-11-24T11:31:43	Date and time of file creation	ontime1	20777.600019351	Sum of GTIs [s]
revision	3	Processing version of data	ontime2	20777.600019351	Sum of GTIs [s]
			ontime3	20774.359039202	Sum of GTIs [s]
			ontime6	20774.35905914	Sum of GTIs [s]
			l1events	882845	Number of level 1 events

2.1.4 Events

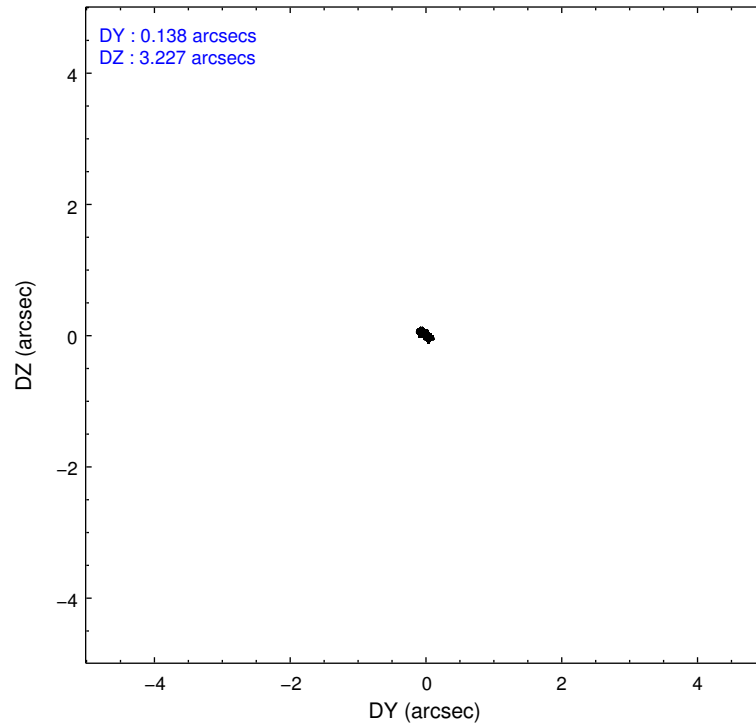
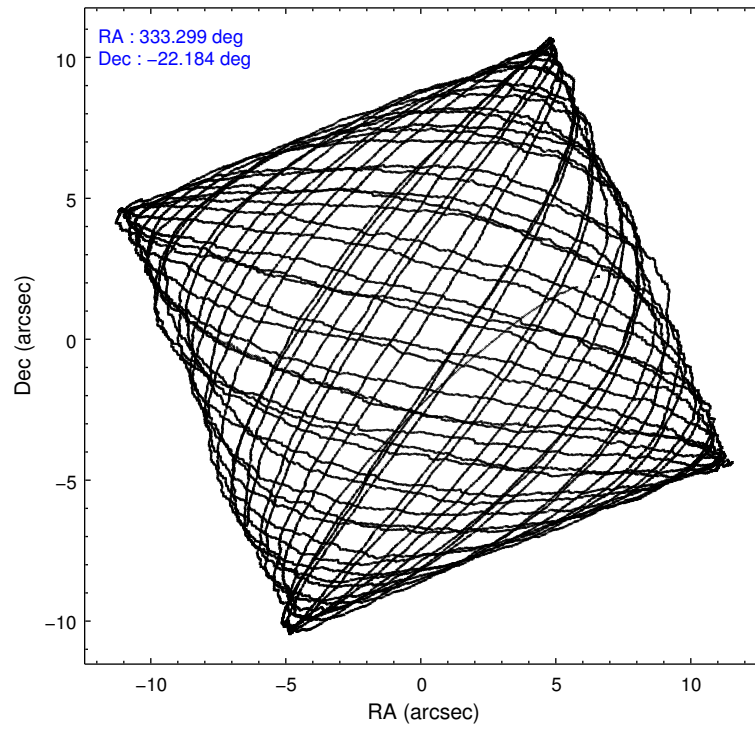
	ccd 0	ccd 1	ccd 2	ccd 3	ccd 6
level 1 events	170069	165841	184606	178870	183459
rejected events	152032	147275	167791	161299	166323
rejected %	89%	88%	90%	90%	90%

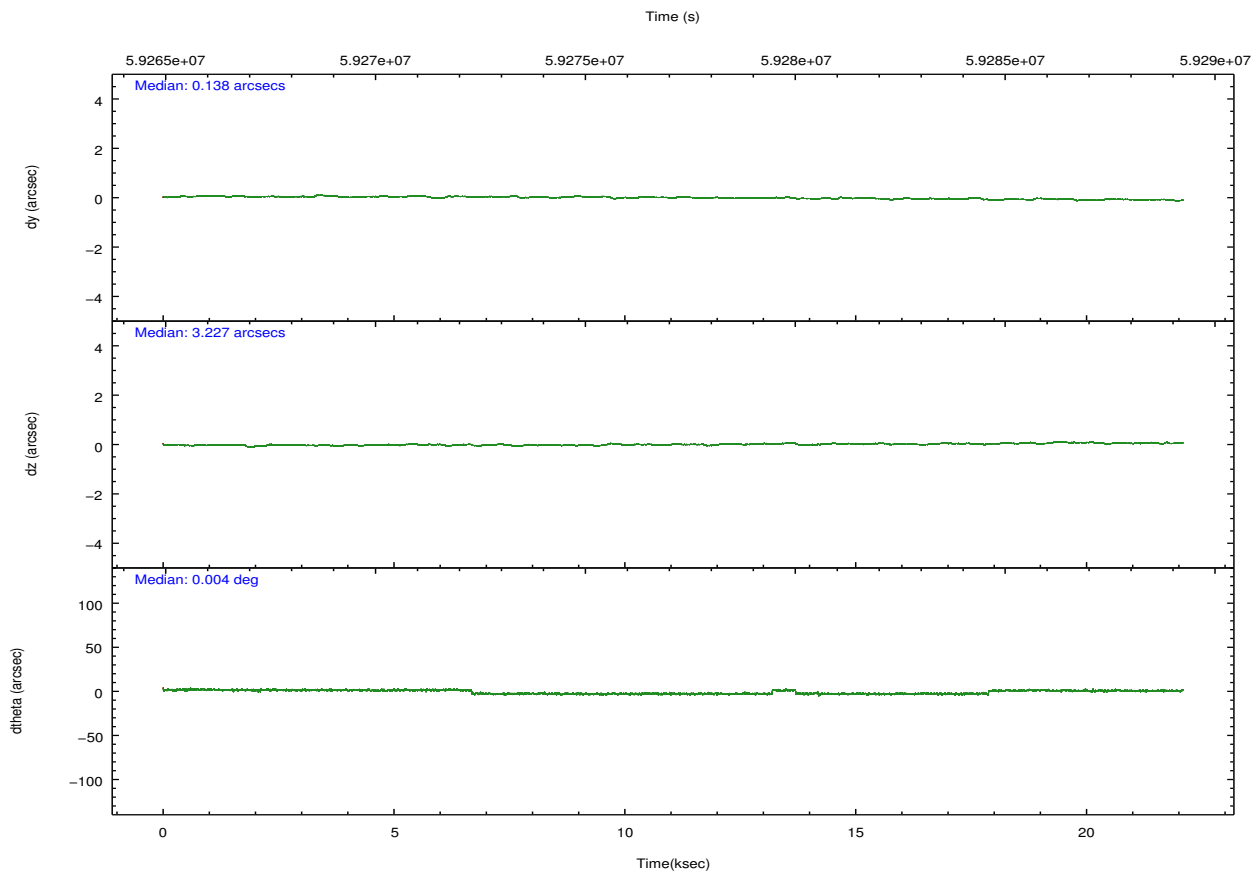
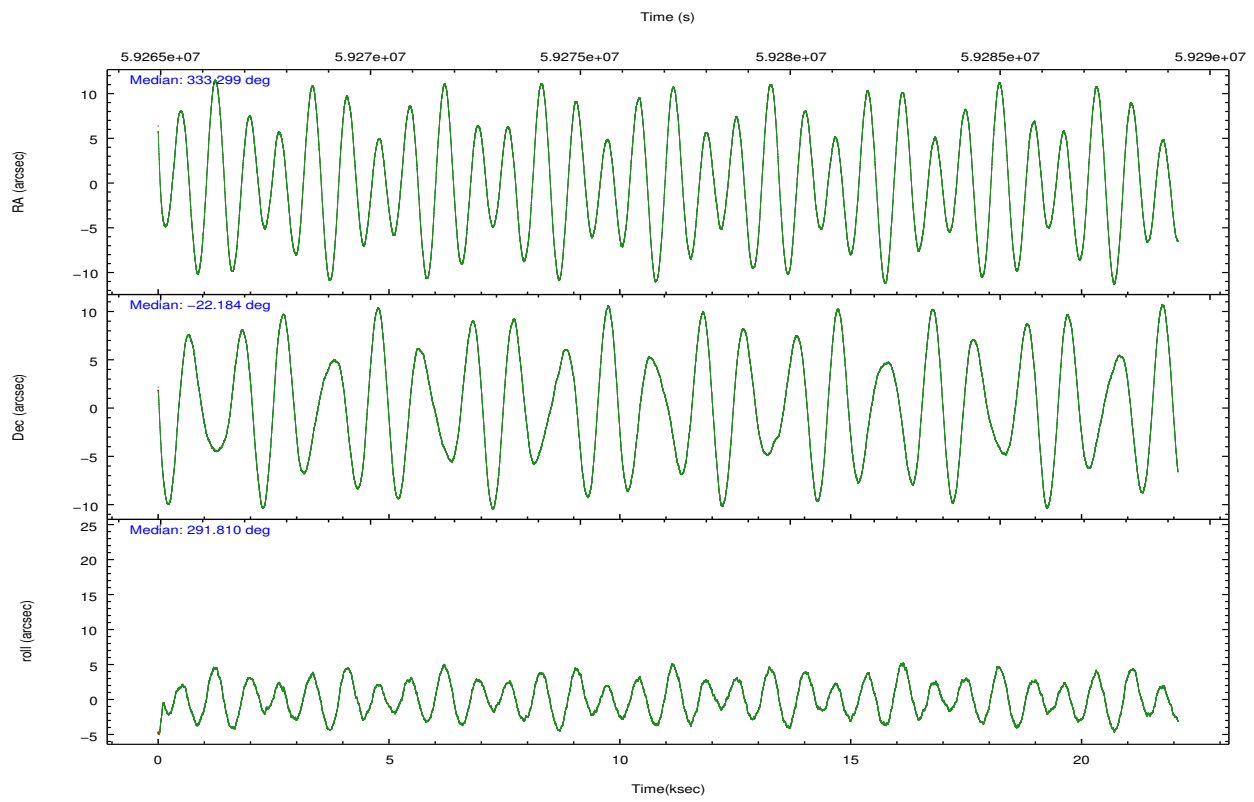
	ccd 0	ccd 1	ccd 2	ccd 3	ccd 6
grade 0 events	4676	4278	3983	4018	3426
	2%	2%	2%	2%	1%
grade 1 events	39	45	33	24	38
	0%	0%	0%	0%	0%
grade 2 events	6731	6998	6554	7114	6824
	3%	4%	3%	3%	3%
grade 3 events	1341	1401	1144	1150	1094
	0%	0%	0%	0%	0%
grade 4 events	1179	1343	1122	1114	1074
	0%	0%	0%	0%	0%
grade 5 events	3420	3597	3033	3175	3631
	2%	2%	1%	1%	1%
grade 6 events	4117	4549	4017	4179	4723
	2%	2%	2%	2%	2%
grade 7 events	148566	143630	164720	158096	162649
	87%	86%	89%	88%	88%

2.2 Compared Parameters

Parameter	Planned	Actual	Parameter	Planned	Actual
Instrument	ACIS	ACIS	Obspar format version number	6	6
Detector	ACIS-01236	ACIS-01236	Obspar file type	PREDICTED	ACTUAL
Grating	NONE	NONE	Obspar update status	NONE	UPDATED
Data mode	FAINT	FAINT	Number of optional ACIS chips dropped	0	0
Observation mode	POINTING	POINTING	On-chip summing requested	N	N
Pointing RA	333.276185	333.2994710871234	Subarray requested	NONE	NONE
Pointing Dec	-22.166421	-22.18385643012634	Alternating exposures requested	N	N
Pointing Roll	291.598638	291.816110838416	Primary exposure time	0.000000	3.2
SIM focus pos (mm)	-0.782348	-0.7809083437167272			
SIM defocus (mm)	0	0.001439871863259334			
SIM translation stage pos (mm)	-233.592463	-233.5874344608287			
SIM translation stage offset (mm)	0	-0.005018542100998502			
Observation start time	59266531.184000	59265748.935149			
Observation start date	1999-11-17T22:54:27	1999-11-17T22:42:28			
Observation end time	59288131.184000	59288380.935967			
Observation end date	1999-11-18T04:54:27	1999-11-18T04:59:40			
Read mode	TIMED	TIMED			

2.3 Aspect



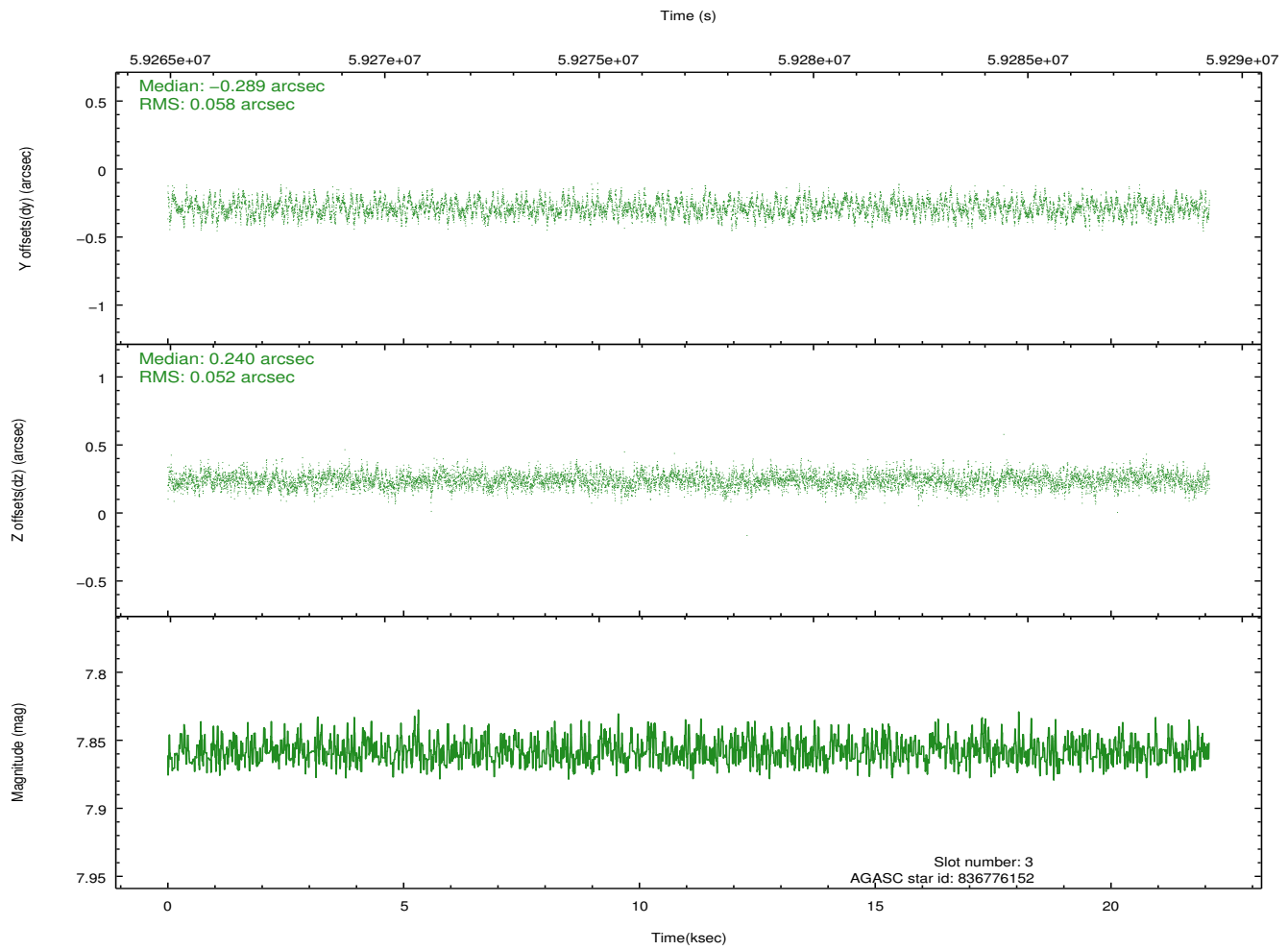
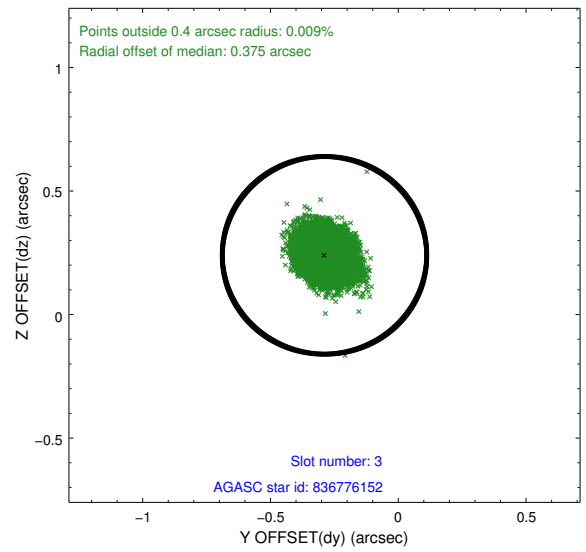
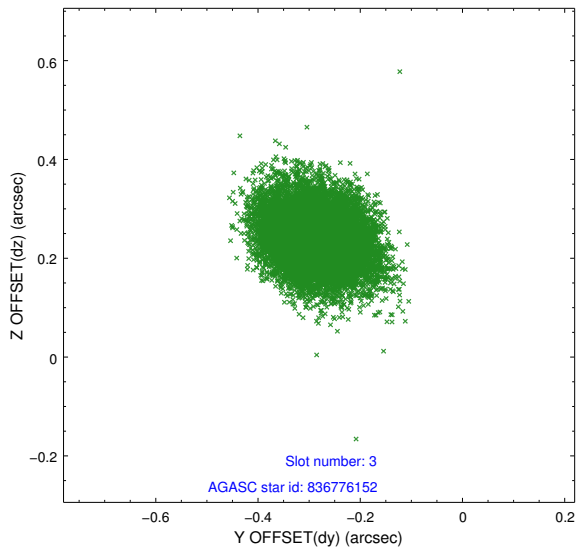


Slot Statistics

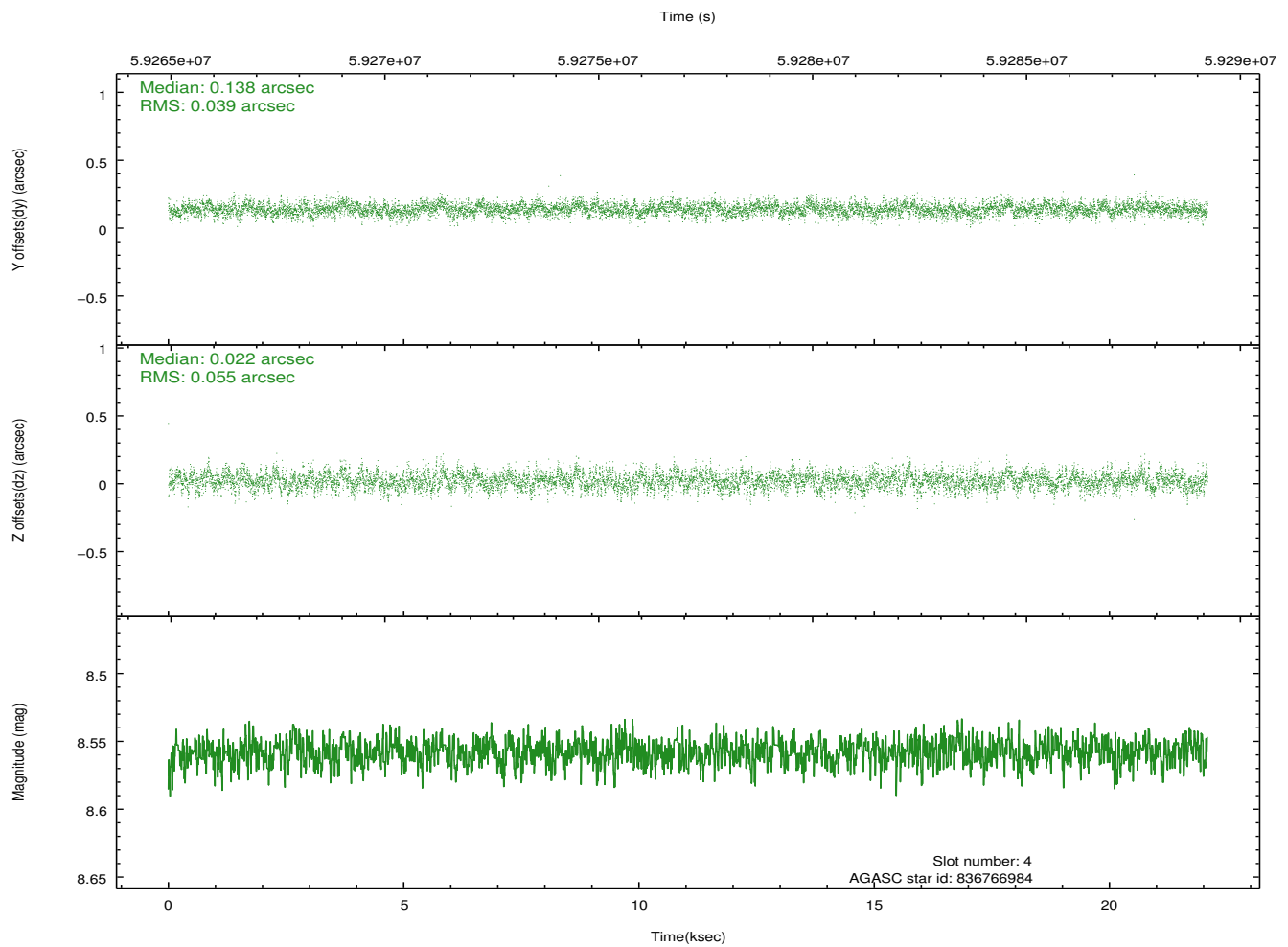
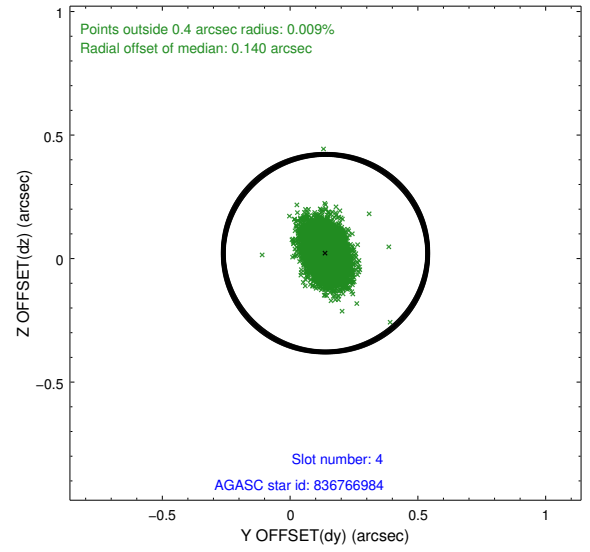
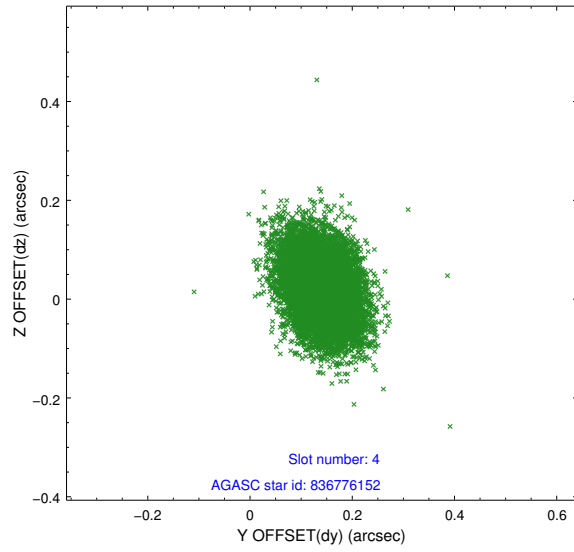
slot	status	id	mag	n_pts	med_dy	med_dz	dr1	dr2	ra	dec	mean_y	mean_z
0	FID	ACIS-I-2	7.20	10772	-0.005	0.100	0.013	0.021	0.000000	0.000000	-754.53	-832.70
1	FID	ACIS-I-4	7.25	10774	0.084	-0.012	0.015	0.022	0.000000	0.000000	2159.82	1073.05
2	FID	ACIS-I-5	7.23	10773	-0.182	-0.019	0.020	0.027	0.000000	0.000000	-1808.33	1071.31
3	GUIDE	836776152	7.86	10775	-0.289	0.240	0.083	0.131	333.527739	-21.411341	-2216.97	1784.67
4	GUIDE	836766984	8.56	10772	0.138	0.022	0.071	0.119	333.468799	-22.264462	564.64	467.17
5	GUIDE	836638040	9.34	10767	-0.089	-0.102	0.103	0.165	332.564351	-22.130419	-988.98	-2161.32
6	GUIDE	911607056	10.42	10757	0.245	0.010	0.147	0.239	333.546094	-22.652712	1958.69	189.41
7	GUIDE	836637440	10.76	10763	-0.012	-0.172	0.176	0.291	332.519186	-22.076953	-1222.86	-2231.80

2.4 Star Slots

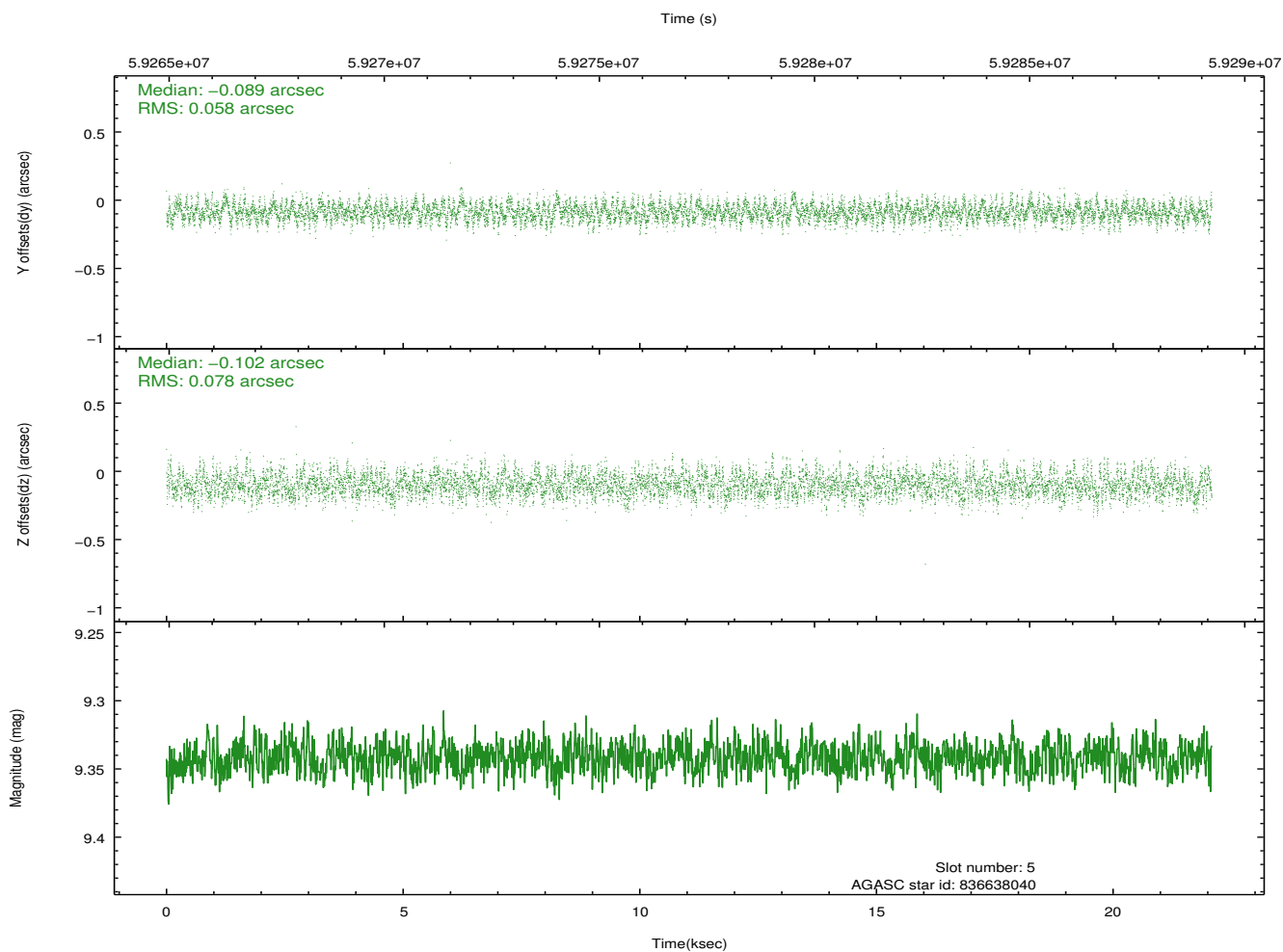
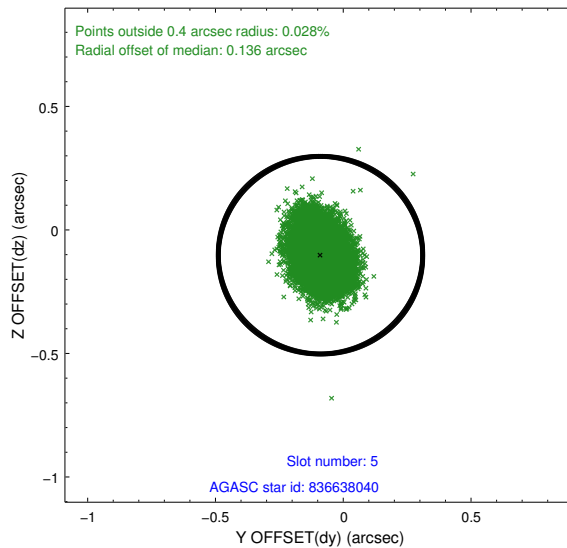
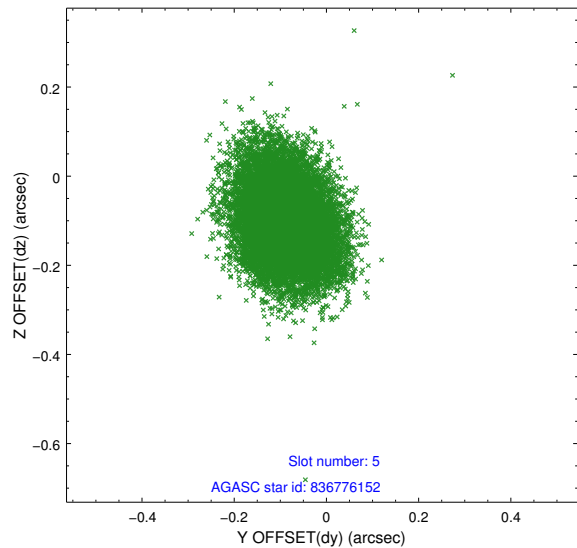
2.4.1 Slot 3



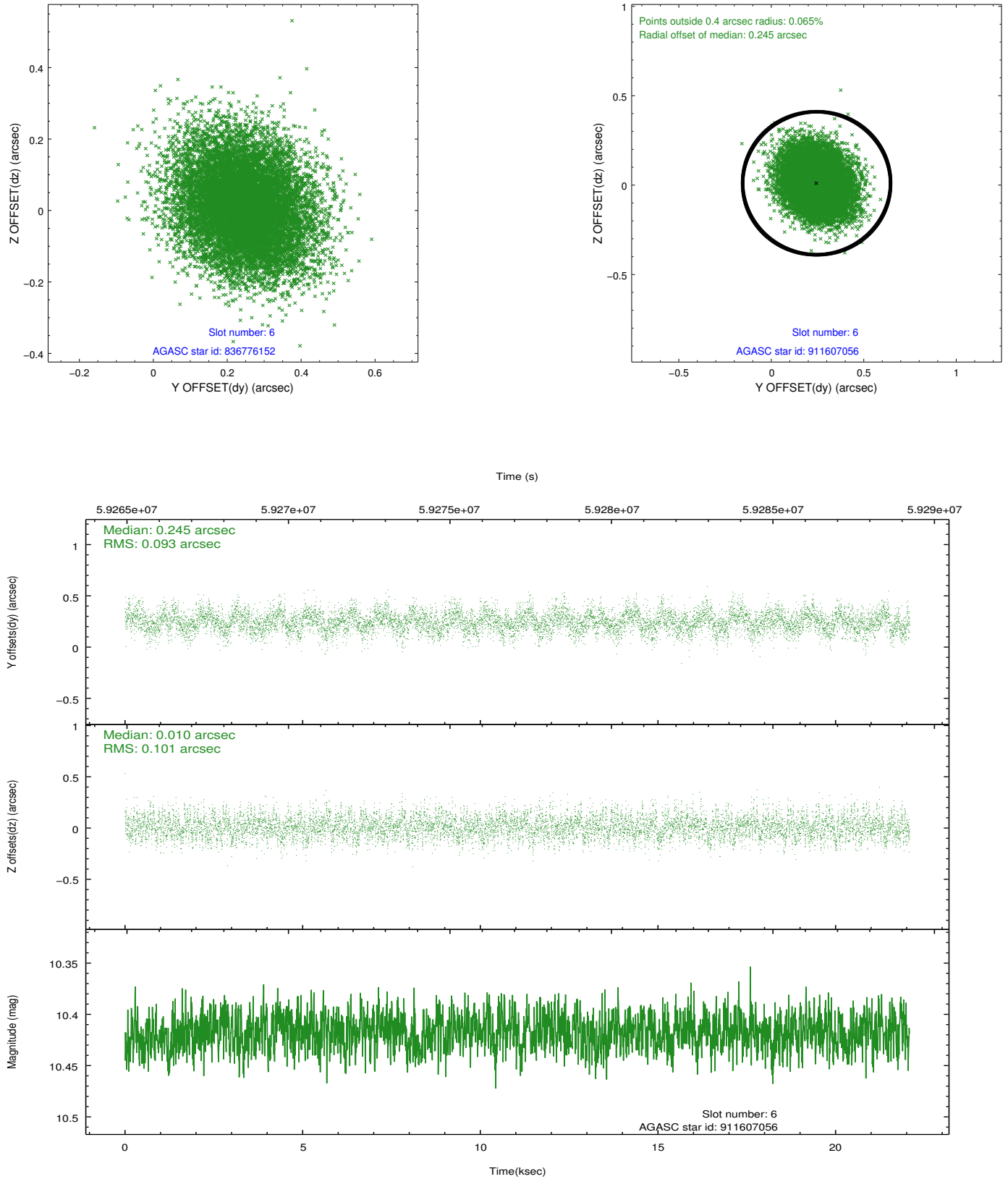
2.4.2 Slot 4



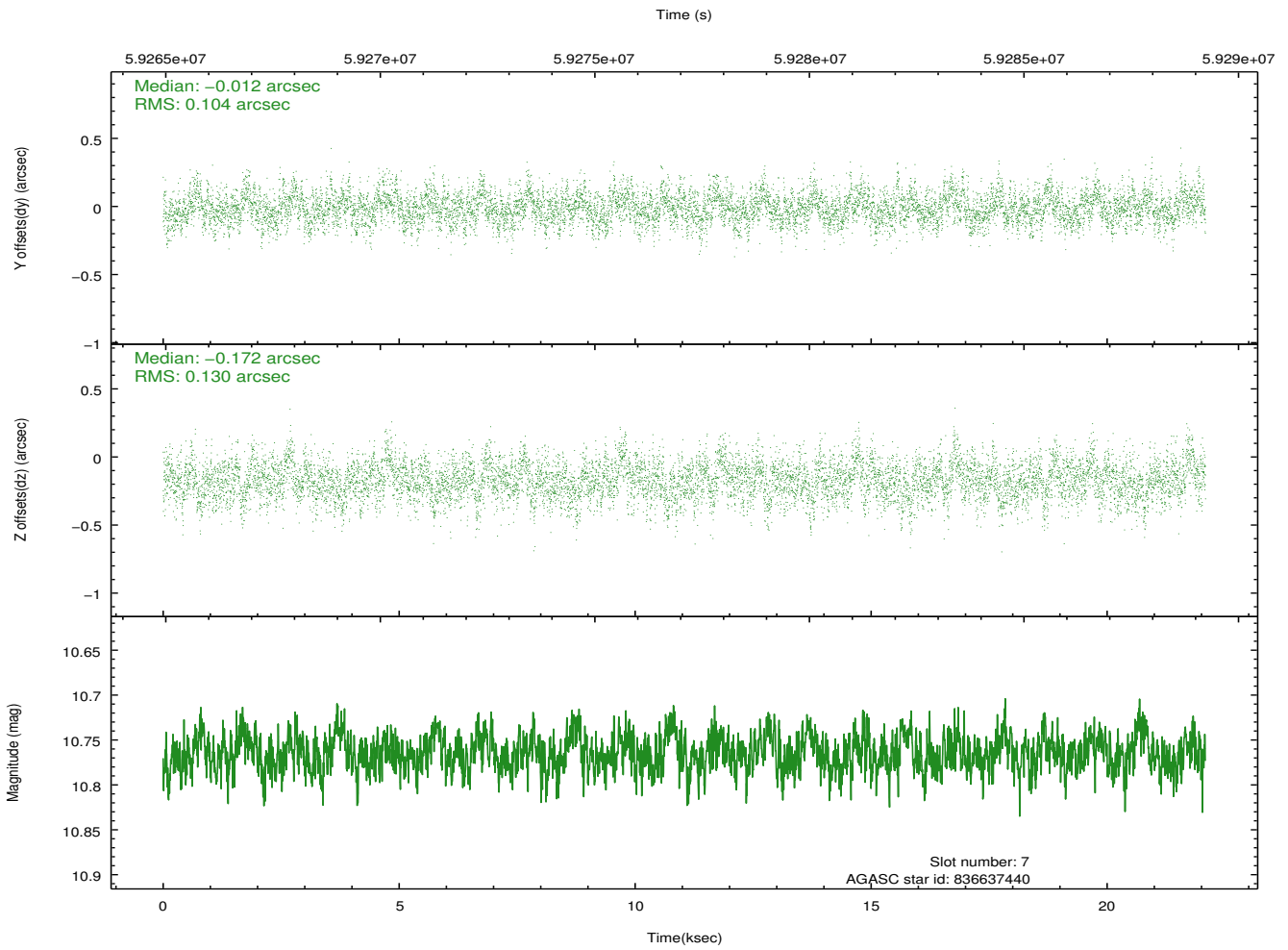
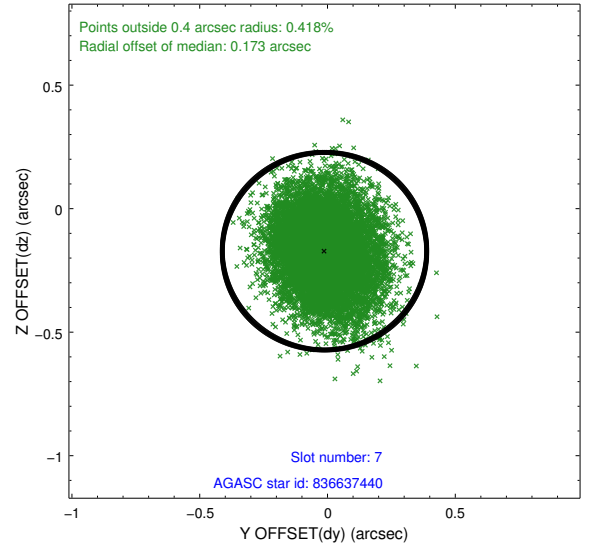
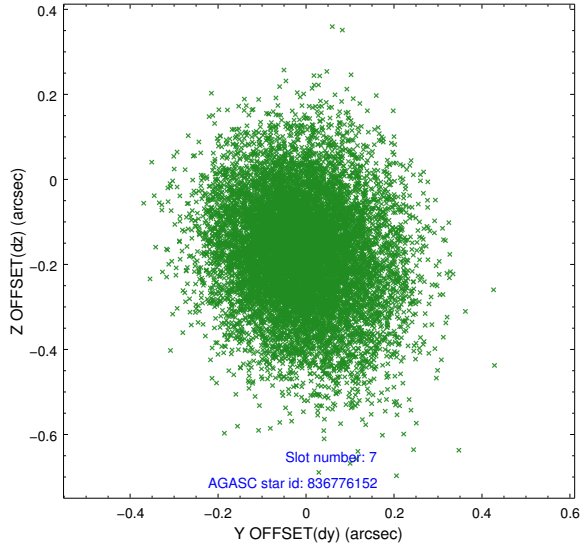
2.4.3 Slot 5



2.4.4 Slot 6

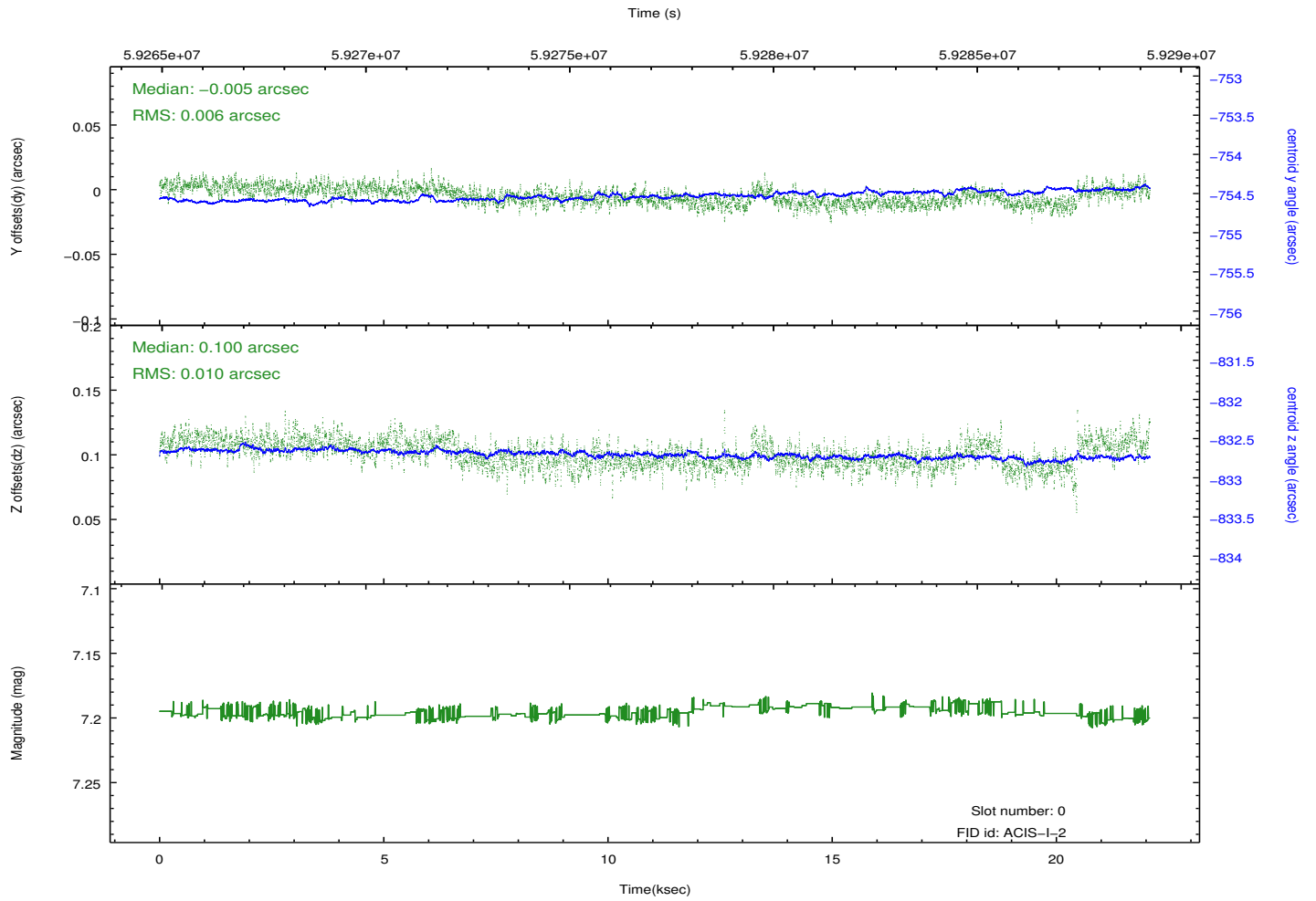
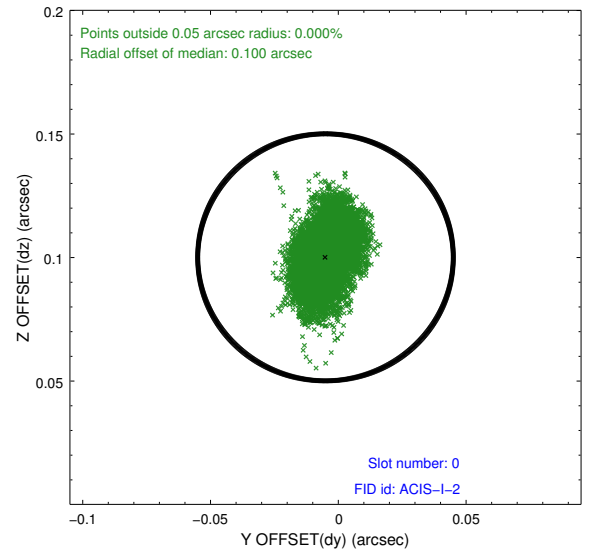
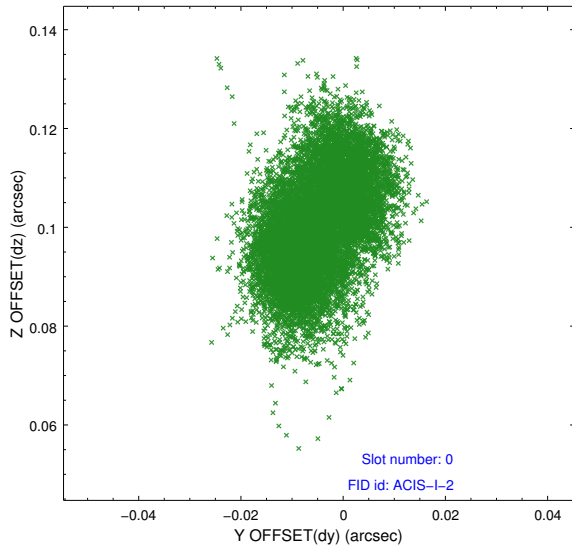


2.4.5 Slot 7

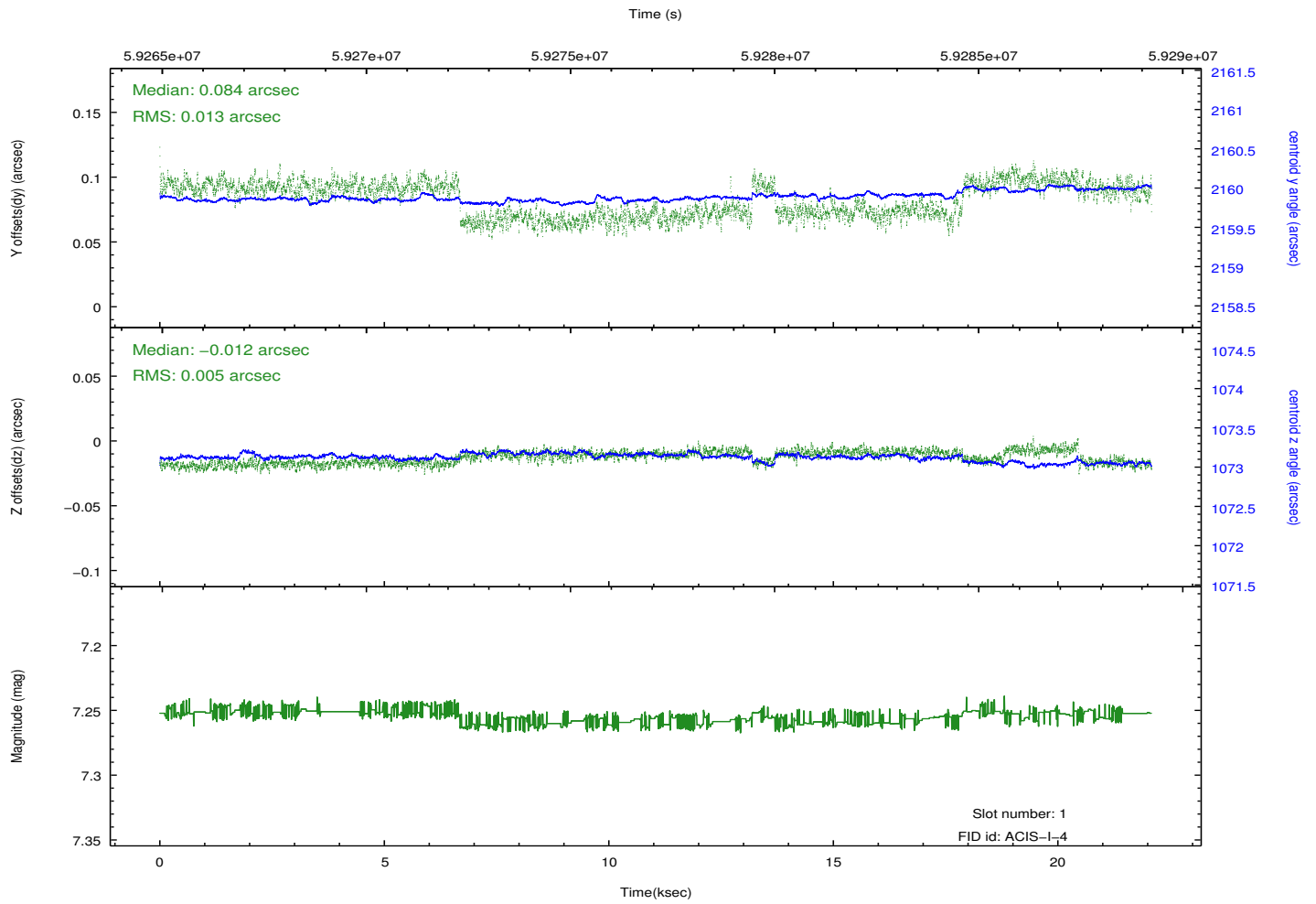
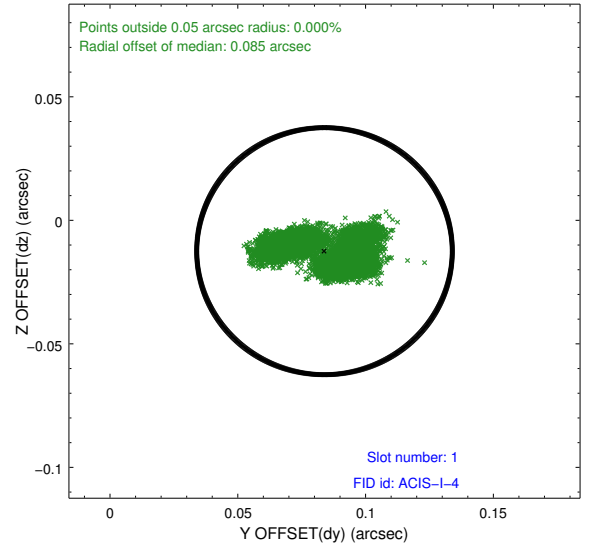
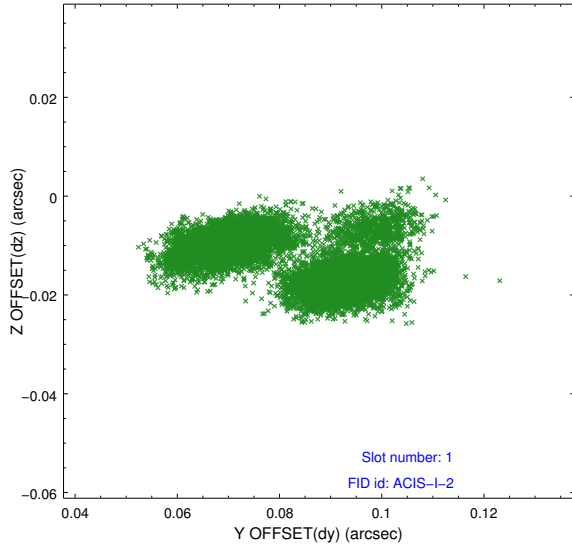


2.5 FID Slots

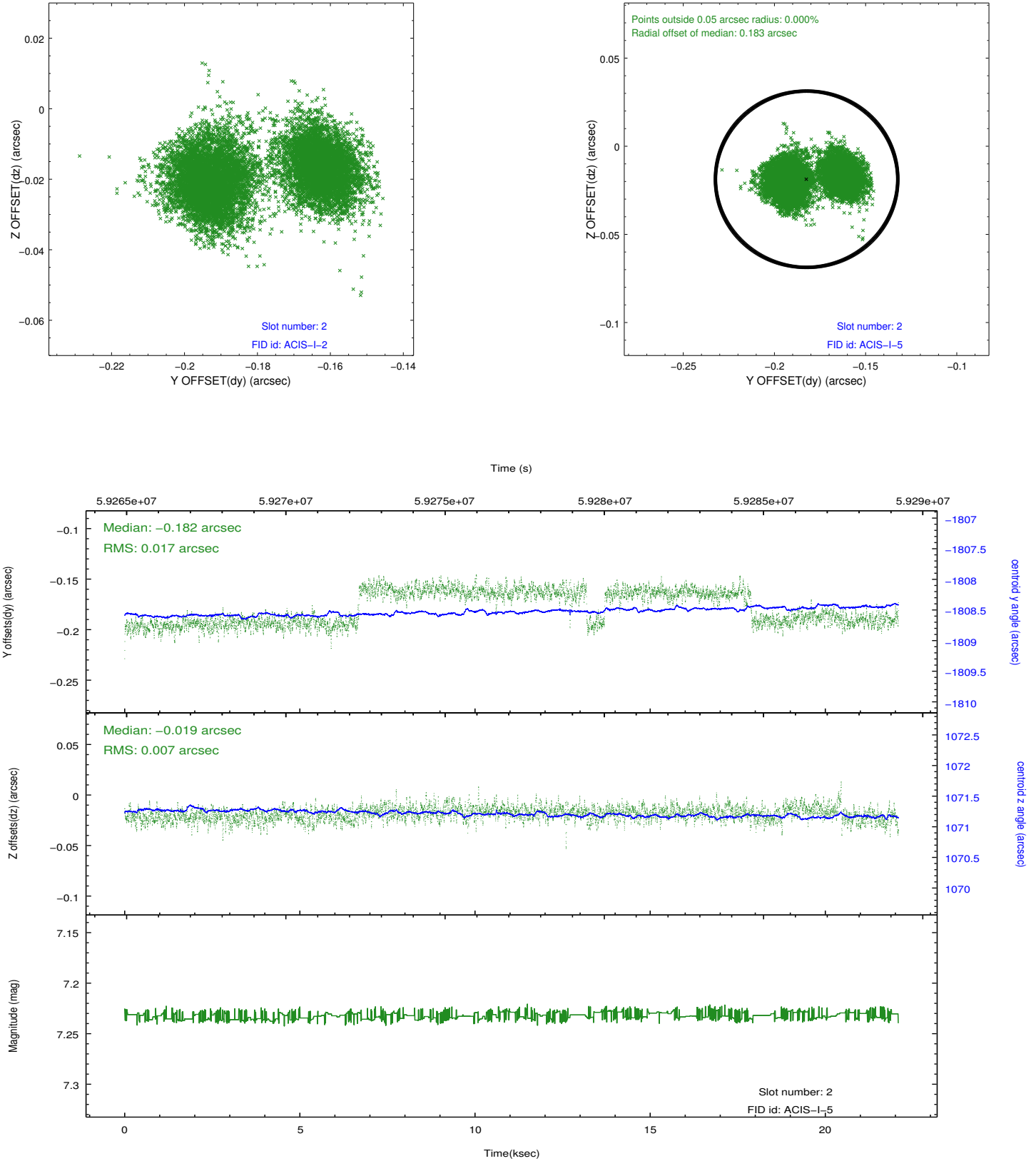
2.5.1 Slot 0



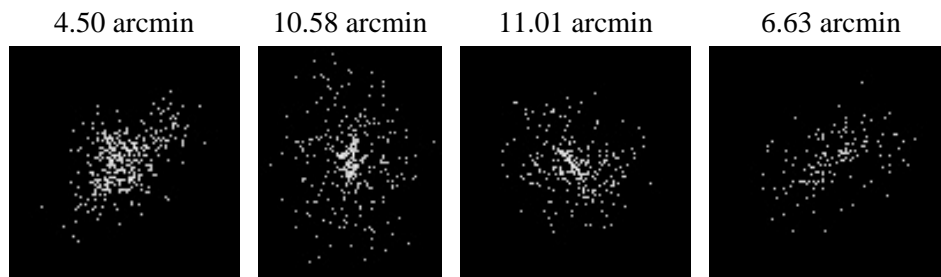
2.5.2 Slot 1



2.5.3 Slot 2



3 Point Sources



A Summary

A.1 Status

V&V Scientist	Joy Nichols
V&V Date (YYYY-MM-DD)	2010.03.31
V&V Edition	1
V&V Disposition and Status	OK
V&V Charge Time	20.774

A.2 Comments

Observation taken at the anti-radiant position during the Leonid showers.

That is to say, the telescope was pointed in the opposite direction of the vector of potential impact from the incoming meteor showers. There was no particular scientific target in this field. It was chosen for spacecraft safety only. However, the observation is a good quality observation of this line of sight and has potential scientific usefulness.

===

The focal plane temperature is approximately -110 C during this observation. This reprocessing of the data applies no CTI correction because none is available for this temperature at present.

The ACIS CTI correction has not been calibrated at this temperature, because it was early in the mission, and ACIS had not yet been lowered to the standard -119.7 C. Both front and back illuminated chips are affected. However a T_GAIN correction has been applied to the BI chips (ACIS-5 and ACIS-7) data included here.

The ACIS spectral response calibration is less accurate at these warmer temperatures than it is at -119.7 C. Users whose science objectives depend on the most accurate spectral response (ie: fitting line-rich spectra) may notice an effect. Users whose science objectives do not depend on the most accurate spectral response should not notice an effect.