

V&V Reference Report

L2 ASCDS Version : 10.2.1

Observation 14819 - L2 Version 2
Chandra X-Ray Center

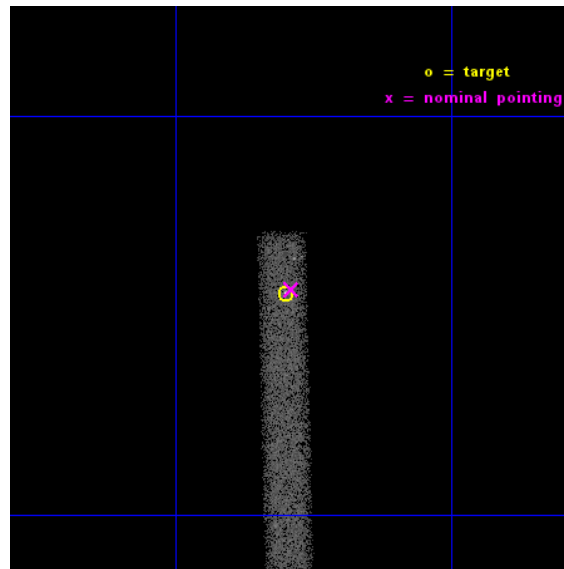
L2 Processing Date : Dec 10 2014

Contents

1	Front	2
2	OBI	3
2.1	OBI	3
2.1.1	Images	3
2.1.2	Bias	3
2.1.3	Parameters	4
2.1.4	Events	4
2.2	Compared Parameters	5
2.3	Aspect	6
2.4	Star Slots	9
2.4.1	Slot 3	9
2.4.2	Slot 4	10
2.4.3	Slot 5	11
2.4.4	Slot 6	12
2.4.5	Slot 7	13
2.5	FID Slots	14
2.5.1	Slot 0	14
2.5.2	Slot 1	15
2.5.3	Slot 2	16
A	Summary	17
A.1	Status	17
A.2	Comments	17

1 Front

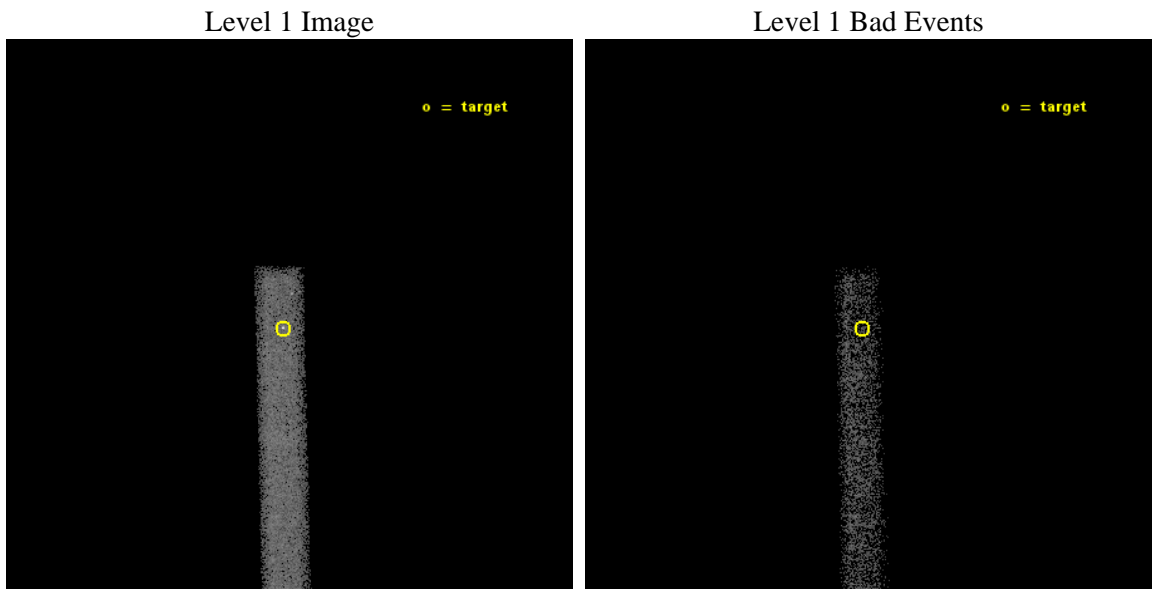
seq_num	501947	Sequence number
obs_id	14819	Observation id
title	Measuring Cooling Curves Following Magnetar Outbursts	Proposal tit
observer	Professor Victoria Kaspi	Principal investigator
object	Swift J1822.3-1606	Source name
dtcycle	0	
cycle	P	events from which exps? Prim/Second/Both
ra_targ	275.575	Observer's specified target RA [deg]
dec_targ	-16.074111	Observer's specified target Dec [deg]
ra_nom	275.57240109193	Nominal RA [deg]
dec_nom	-16.072431191814	Nominal Dec [deg]
roll_nom	88.579340727867	Nominal Roll [deg]
revision	2	Processing version of data
ontime	35069.997909665	Sum of GTIs [s]
livetime	31806.636957795	Livetime [s]
ontime7	35069.997909665	Sum of GTIs [s]
l2events	18260	Number of level 2 events



2 OBI

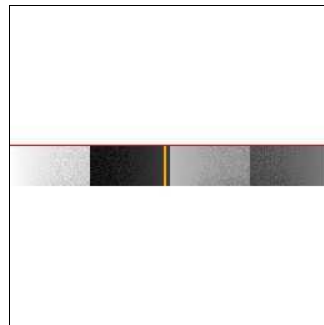
2.1 OBI

2.1.1 Images



2.1.2 Bias

Chip 7



2.1.3 Parameters

obi_num	0	Obi number	sched_exp_time	35000.000000	[s] Scheduled observation exposure time
ascdsver	10.3.1	Processing system revision	ontime	35069.997909665	Sum of GTIs [s]
caldbver	4.6.4	 	ontime7	35069.997909665	Sum of GTIs [s]
date	2014-12-10T14:02:09	Date and time of file creation	l1events	34590	Number of level 1 events
revision	2	Processing version of data			

2.1.4 Events

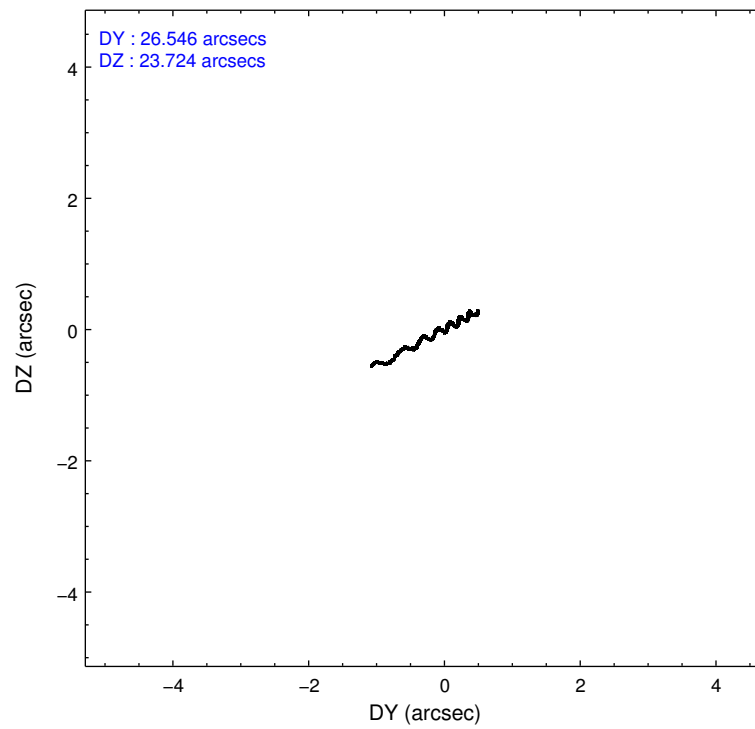
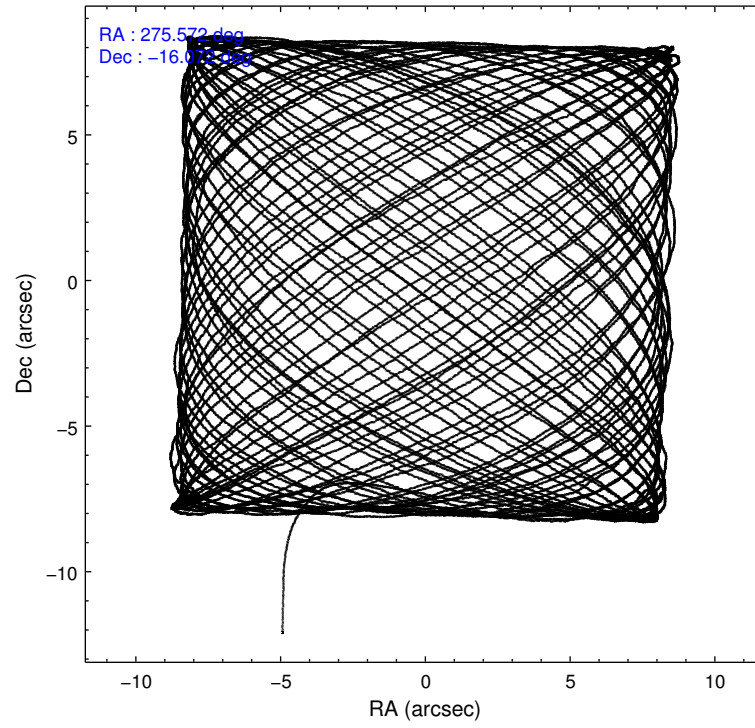
	ccd 7
level 1 events	34590
rejected events	15587
rejected %	45%

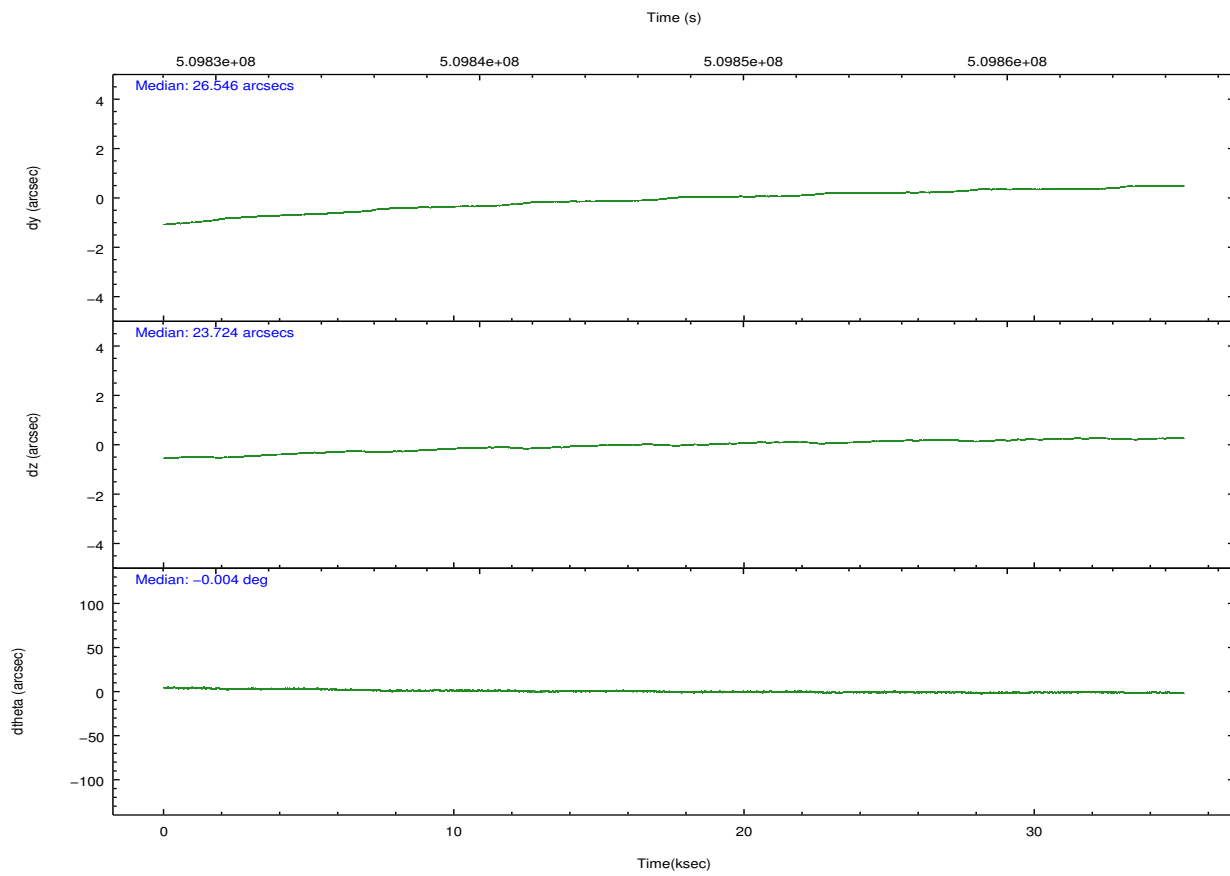
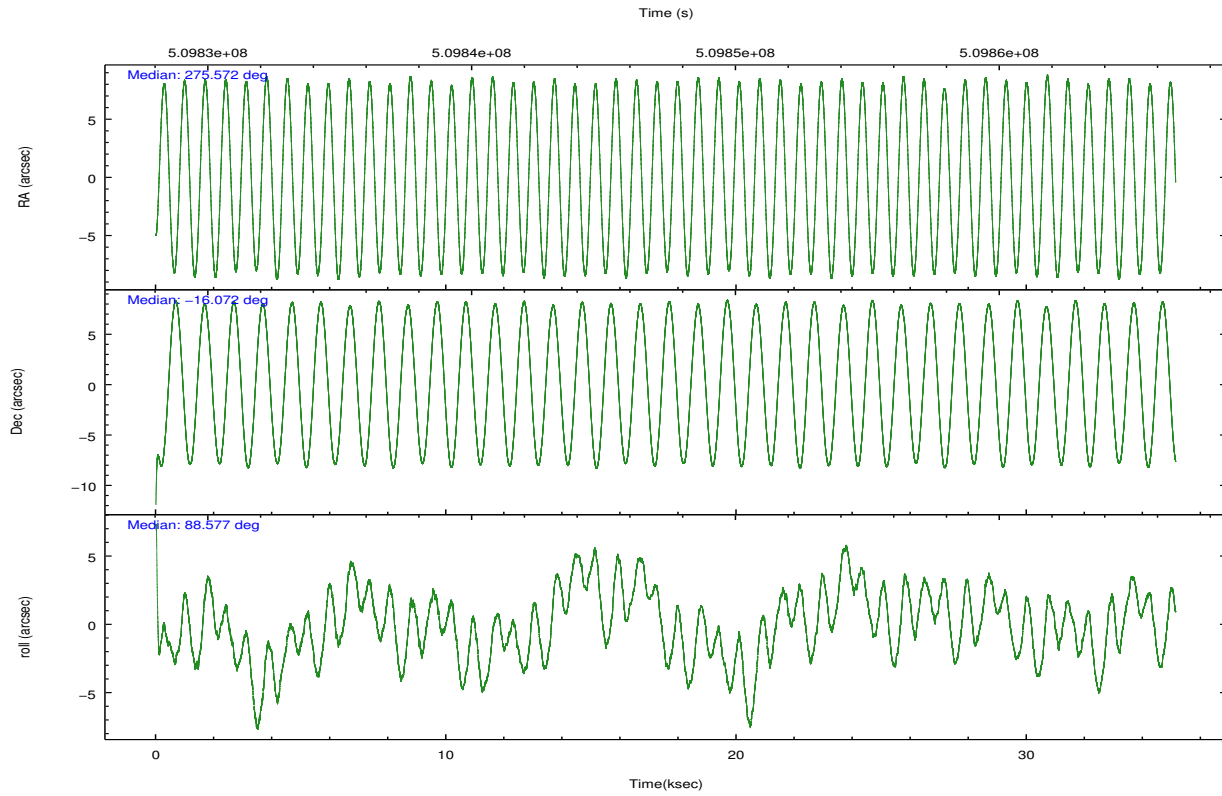
	ccd 7
grade 0 events	2415
	6%
grade 1 events	74
	0%
grade 2 events	4098
	11%
grade 3 events	2493
	7%
grade 4 events	2384
	6%
grade 5 events	3134
	9%
grade 6 events	7613
	22%
grade 7 events	12379
	35%

2.2 Compared Parameters

Parameter	Planned	Actual	Parameter	Planned	Actual
Instrument	ACIS	ACIS	Obspar format version number	7	7
Detector	ACIS-7	ACIS-7	Obspar file type	PREDICTED	ACTUAL
Grating	NONE	NONE	Obspar update status	NONE	UPDATED
Data mode	VFAINT	VFAINT	Number of optional ACIS chips dropped	0	0
Observation mode	POINTING	POINTING	On-chip summing requested	N	N
[deg] Pointing RA	275.586337	275.5724010919328	Subarray requested	CUSTOM	1/8
[deg] Pointing Dec	-16.096250	-16.07243119181433	Subarray start row	449	449
[deg] Pointing Roll	88.426574	88.57934072786681	Subarray row count	128	128
[mm] SIM focus pos	-0.684267	-0.6828225247311905	Alternating exposures requested	N	N
[mm] SIM defocus	0	0.001444936568705701	[s] Primary exposure time	0.000000	0.4
[mm] SIM translation stage pos	-190.132523	-190.1400660498719			
[mm] SIM translation stage offset	0	0.00754346686406393			
[s] Observation start time (MET)	509829940.184000	509828315.12636			
Observation start date	2014-02-26T19:24:33	2014-02-26T18:58:35			
[s] Observation end time (MET)	509864940.184000	509865362.7284			
Observation end date	2014-02-27T05:07:53	2014-02-27T05:16:02			
Read mode	TIMED	TIMED			

2.3 Aspect



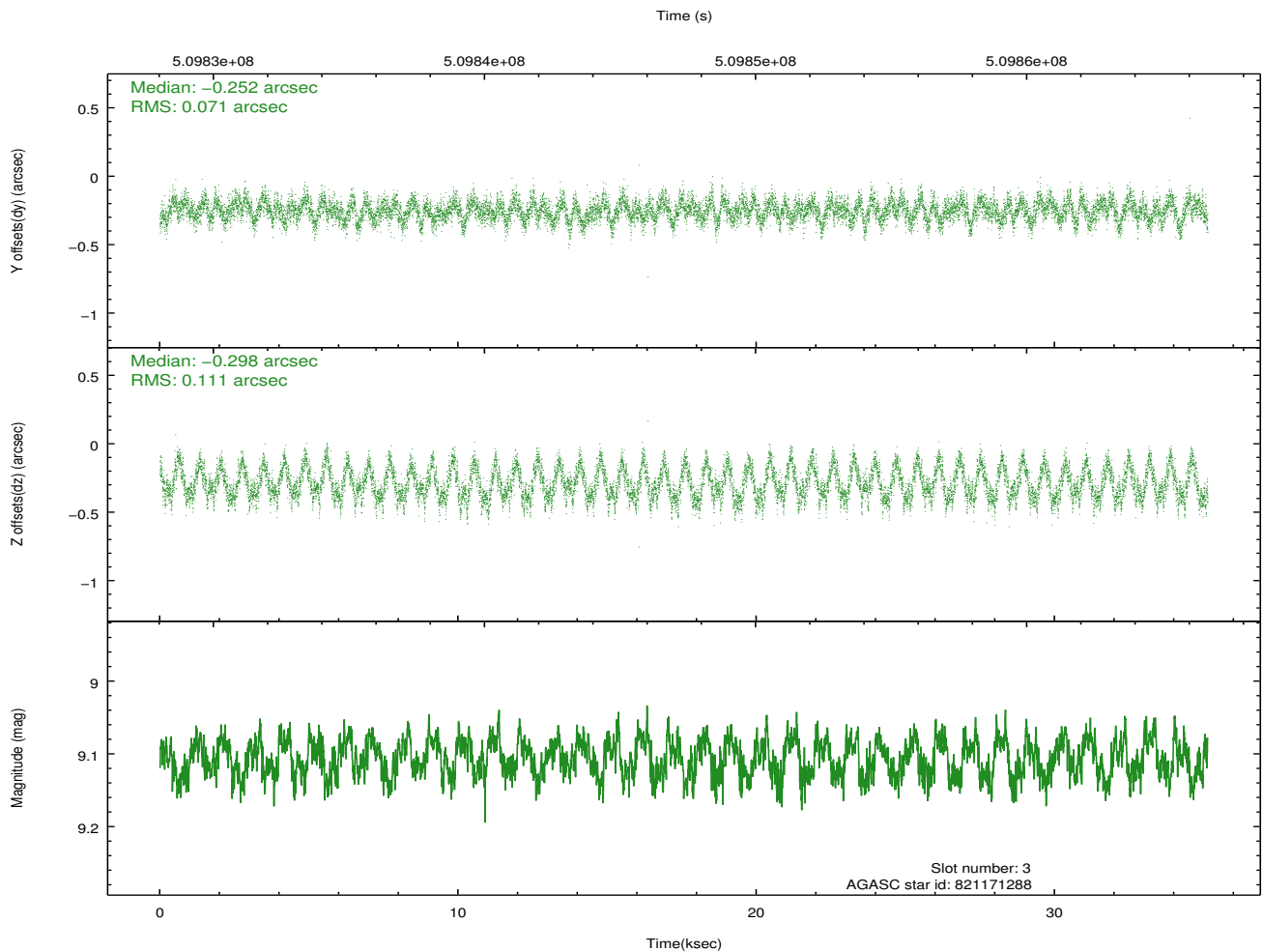
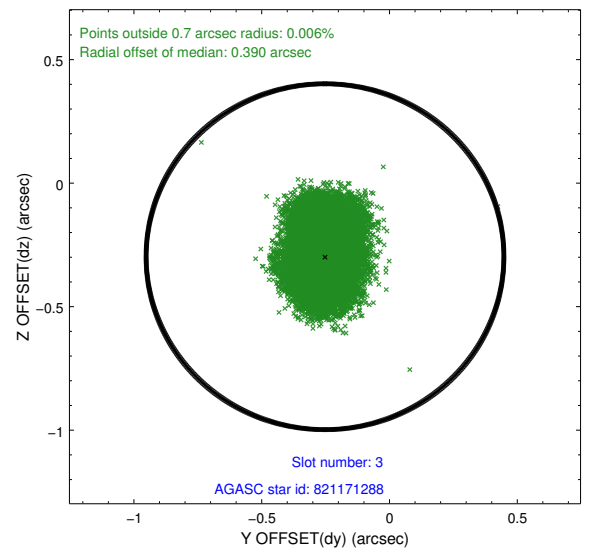
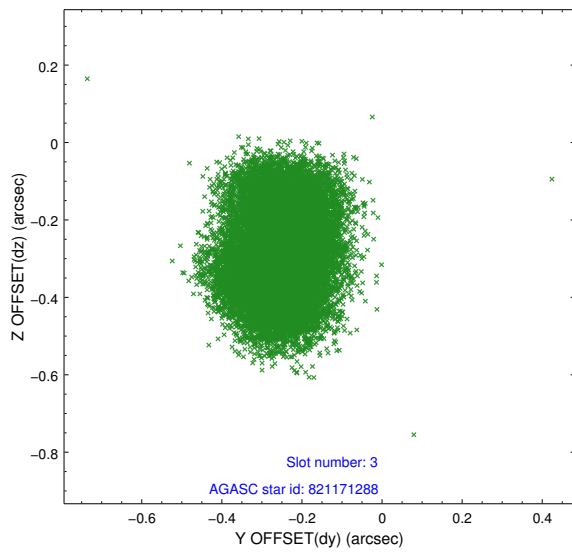


Slot Statistics

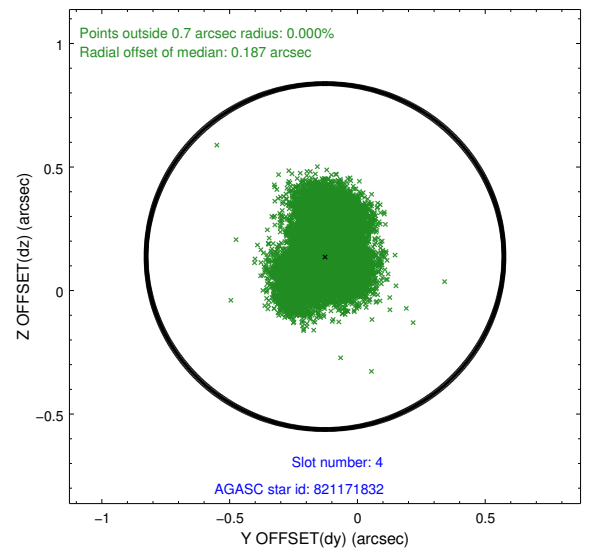
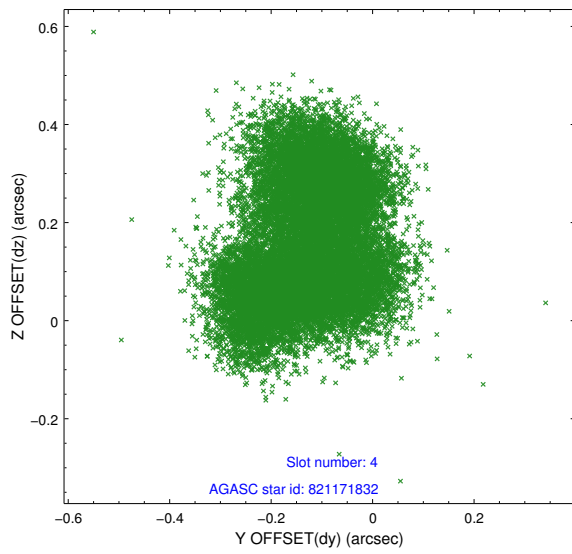
slot	status	used	id	mag	n_pts	med_dy	med_dz	dr1	dr2	ra	dec	mean_y	mean_z
0	FID		ACIS-S-2	6.94	8569	-0.157	-0.022	0.008	0.016	0.000000	0.000000	-779.88	-1745.31
1	FID		ACIS-S-4	7.02	8569	0.296	0.082	0.014	0.022	0.000000	0.000000	2133.83	163.22
2	FID		ACIS-S-5	7.06	8570	-0.171	-0.051	0.014	0.021	0.000000	0.000000	-1832.69	156.82
3	GUIDE	used	821171288	9.11	17130	-0.252	-0.298	0.143	0.220	275.426002	-15.652858	1580.15	599.34
4	GUIDE	used	821171832	8.87	17127	-0.127	0.138	0.165	0.244	275.792275	-15.610164	1768.80	-665.34
5	GUIDE	used	821180448	7.20	17138	-0.001	-0.243	0.099	0.154	275.453560	-16.324585	-834.07	435.79
6	GUIDE	used	821181752	7.61	17135	-0.043	-0.199	0.066	0.108	275.331456	-16.373905	-1023.74	852.48
7	GUIDE	used	821320776	8.04	17134	0.419	0.571	0.093	0.143	276.259669	-16.763117	-2339.26	-2385.65

2.4 Star Slots

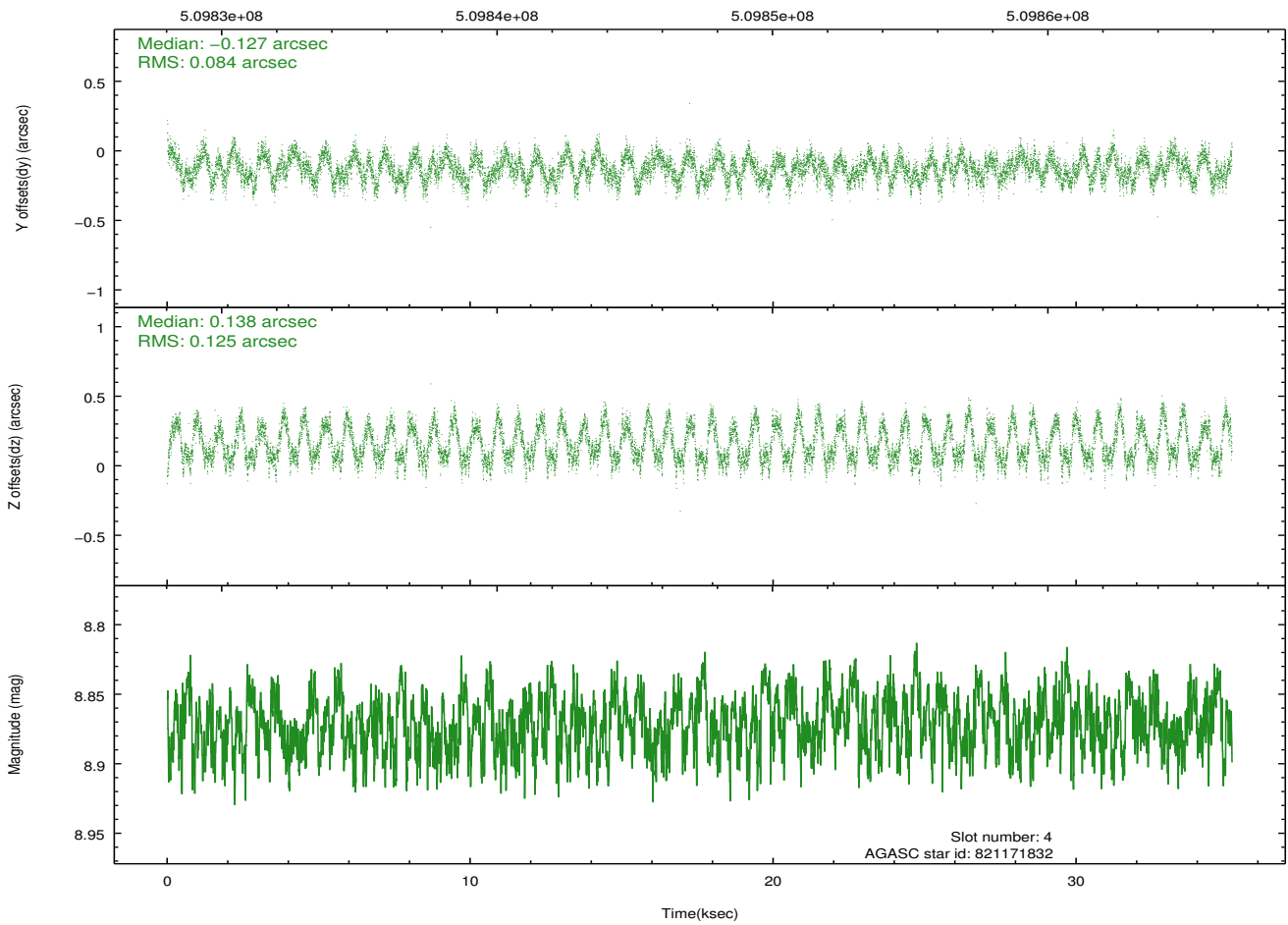
2.4.1 Slot 3



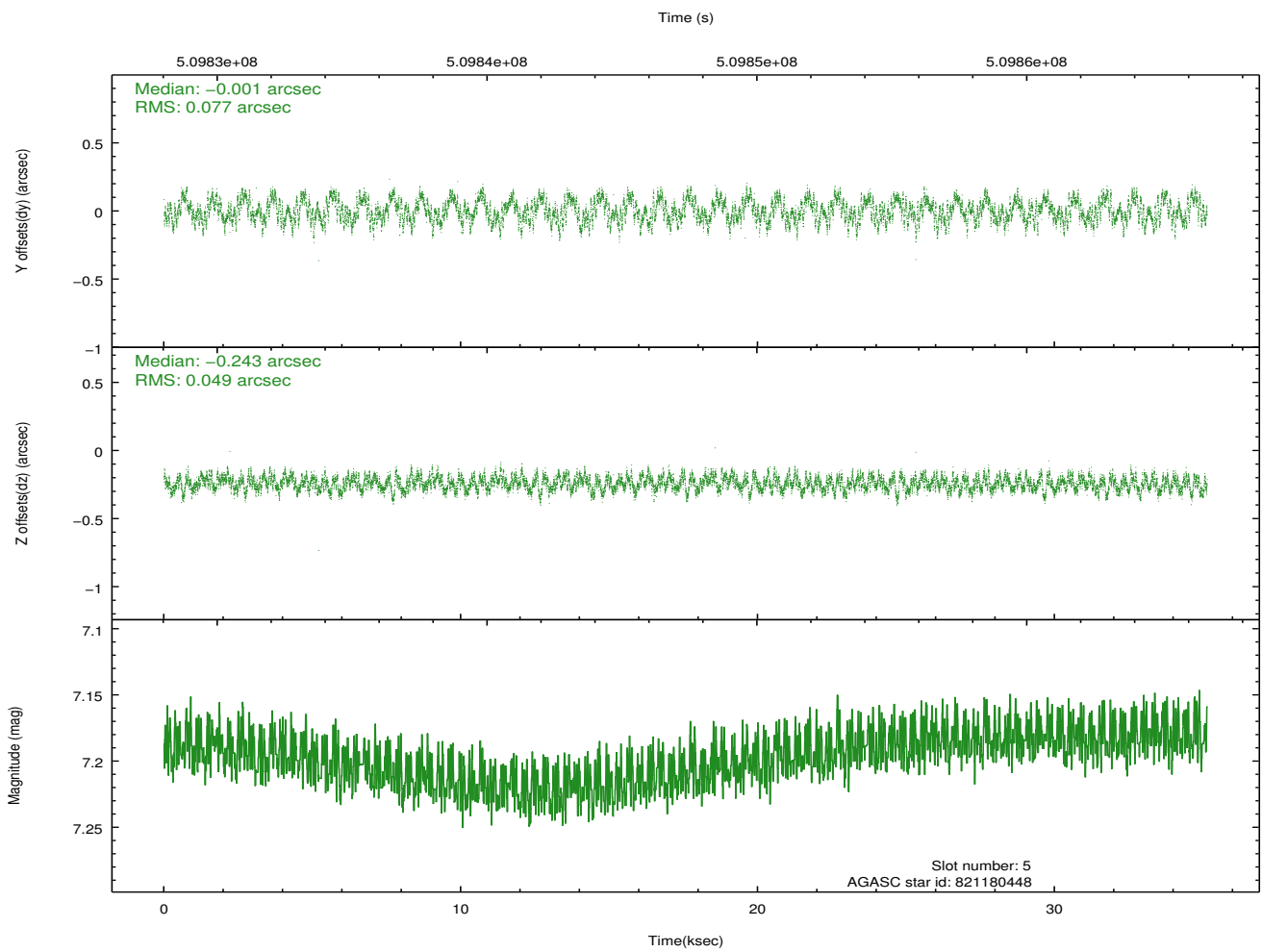
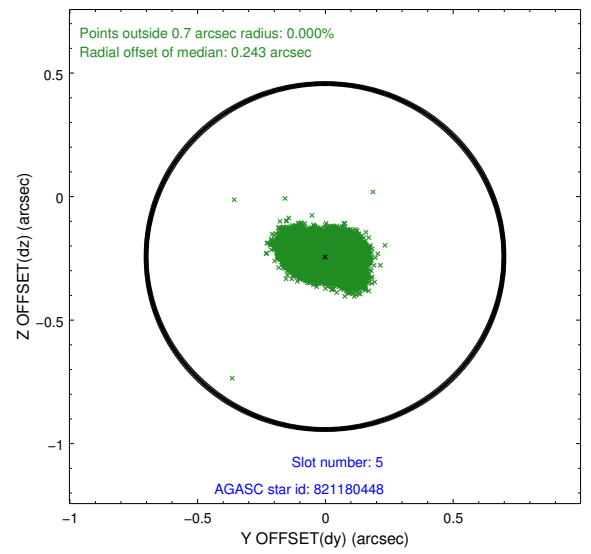
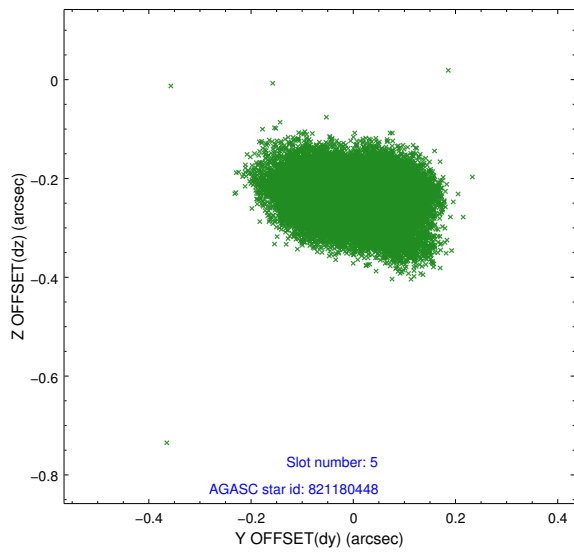
2.4.2 Slot 4



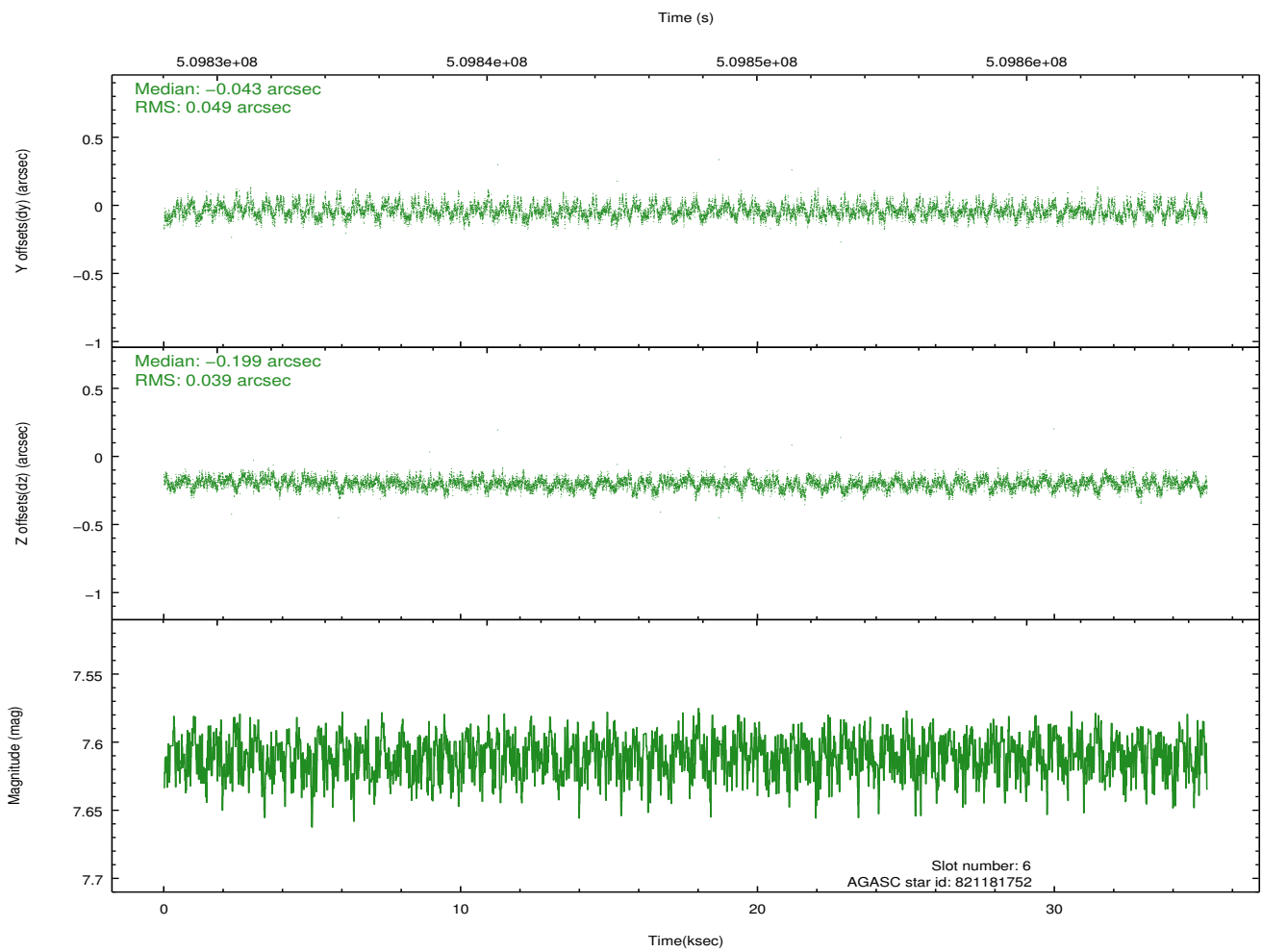
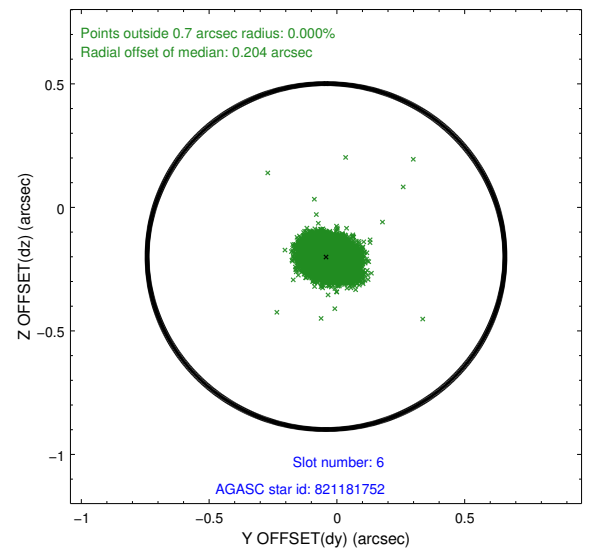
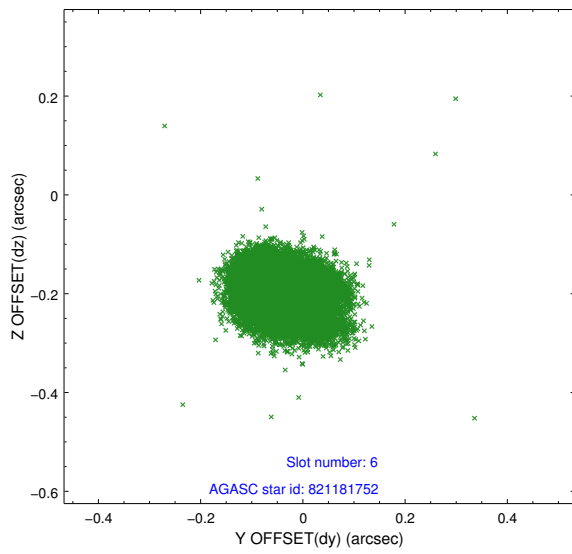
Time (s)



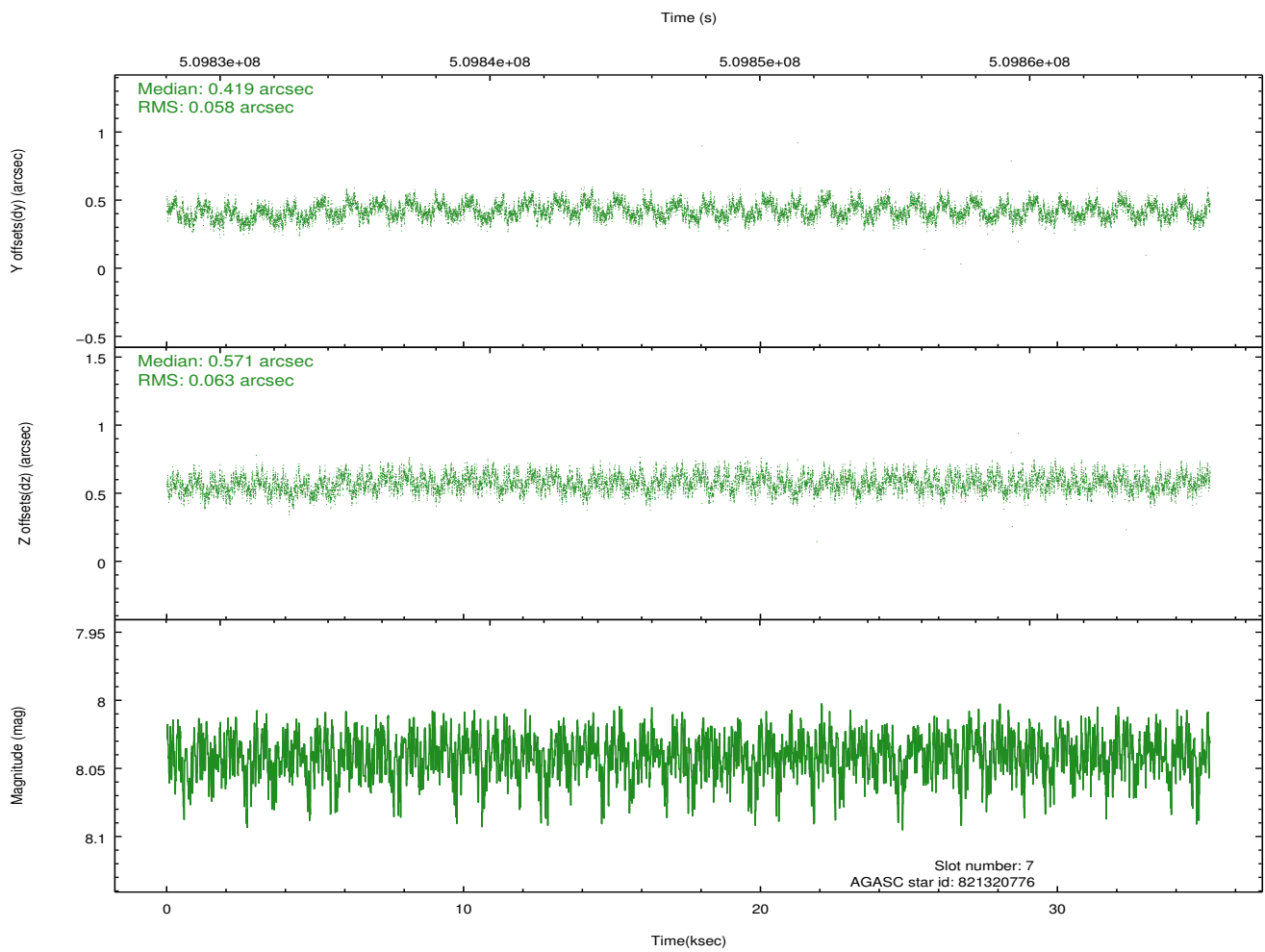
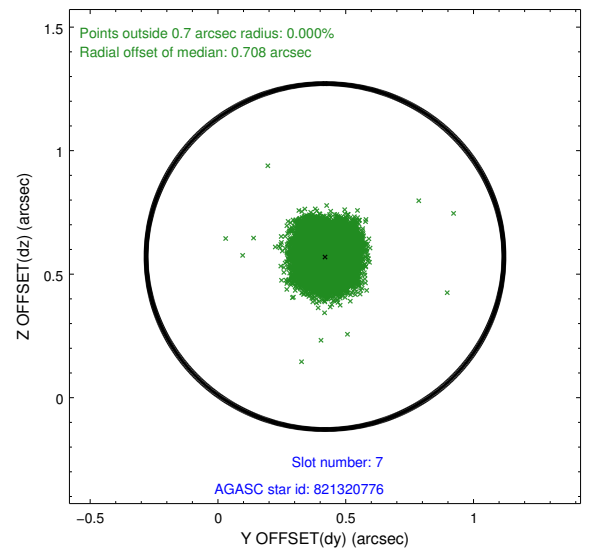
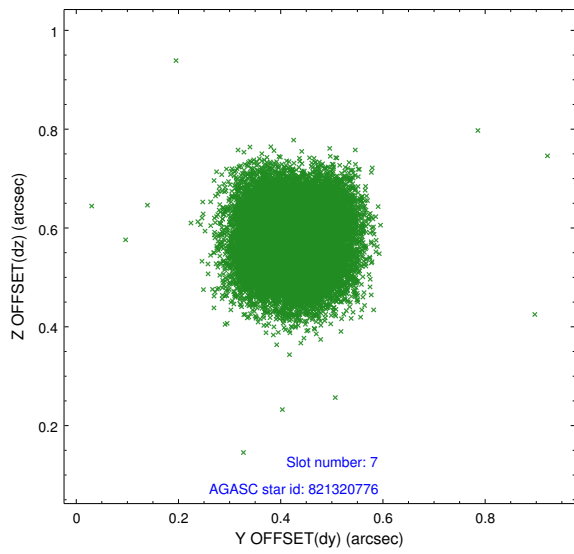
2.4.3 Slot 5



2.4.4 Slot 6

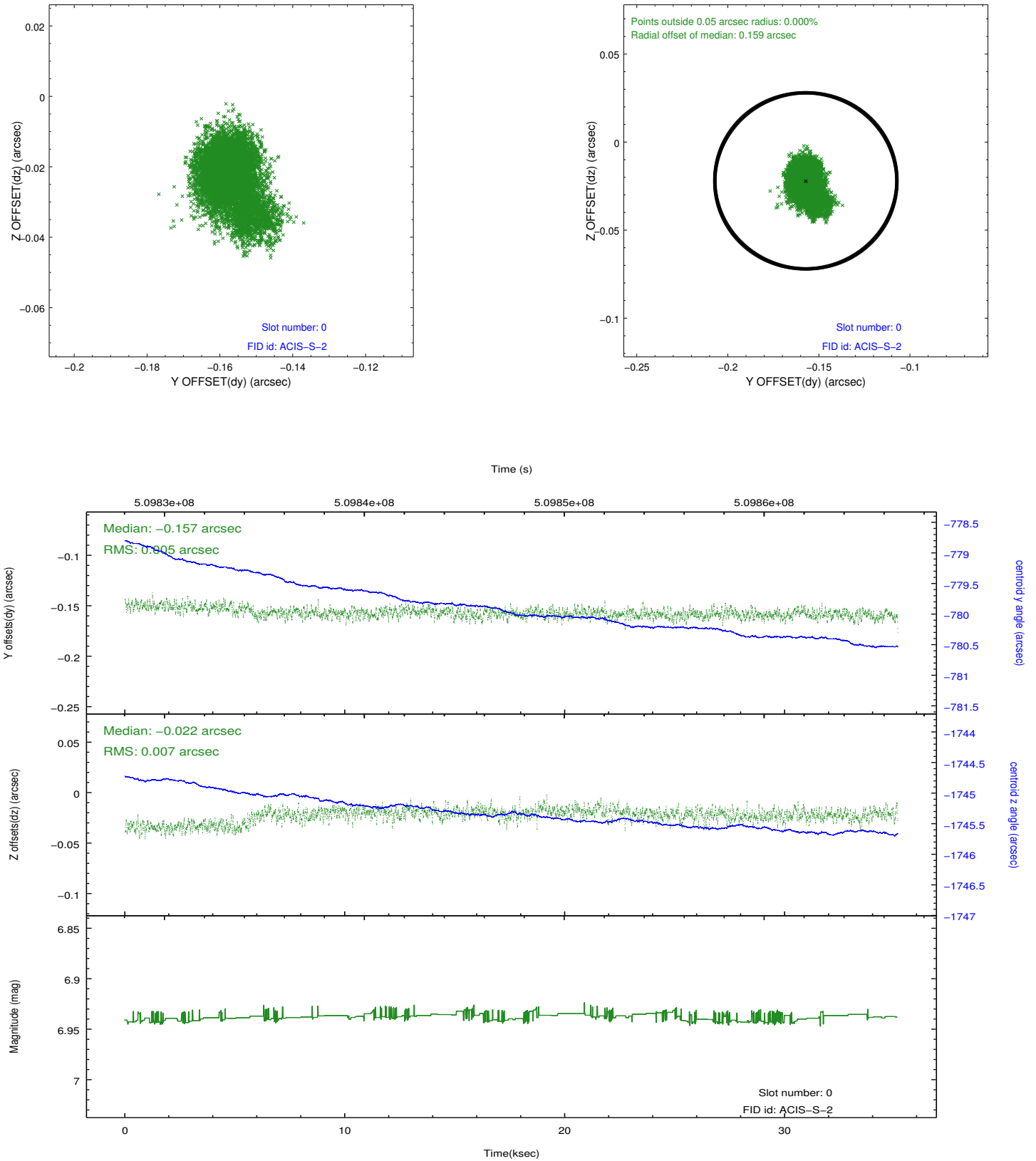


2.4.5 Slot 7

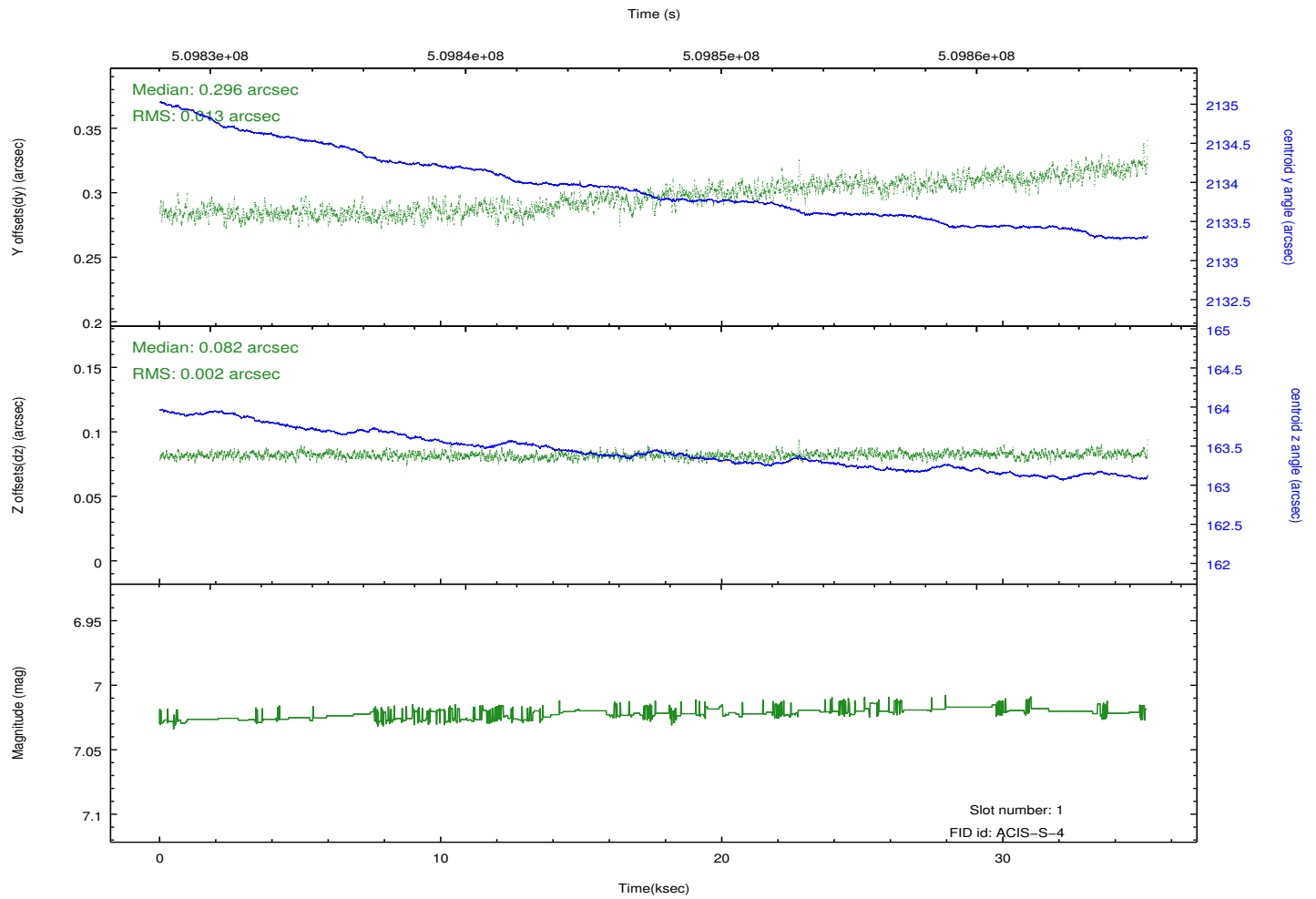
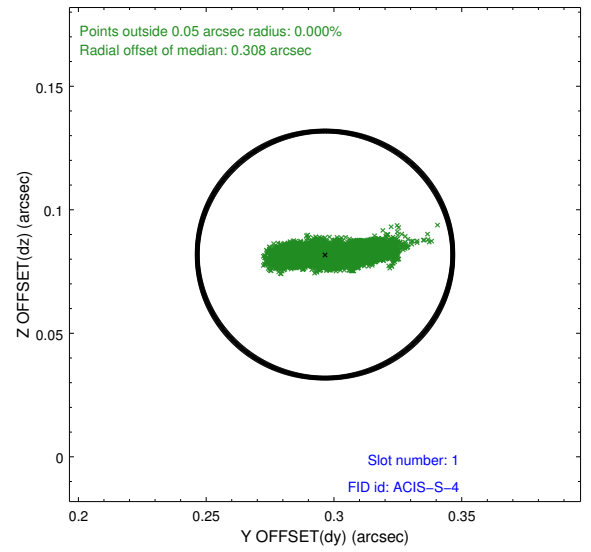
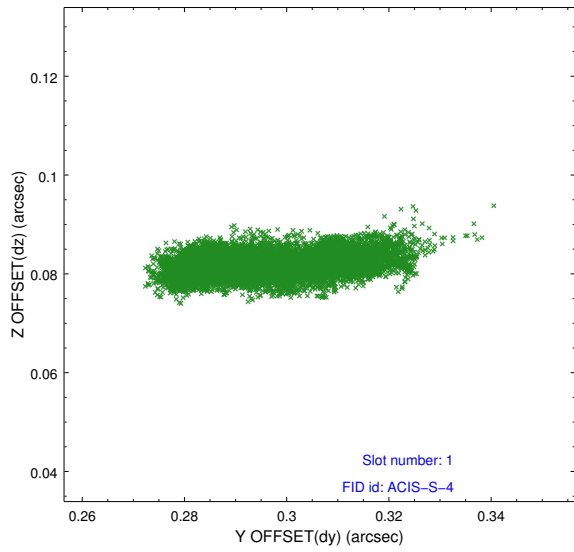


2.5 FID Slots

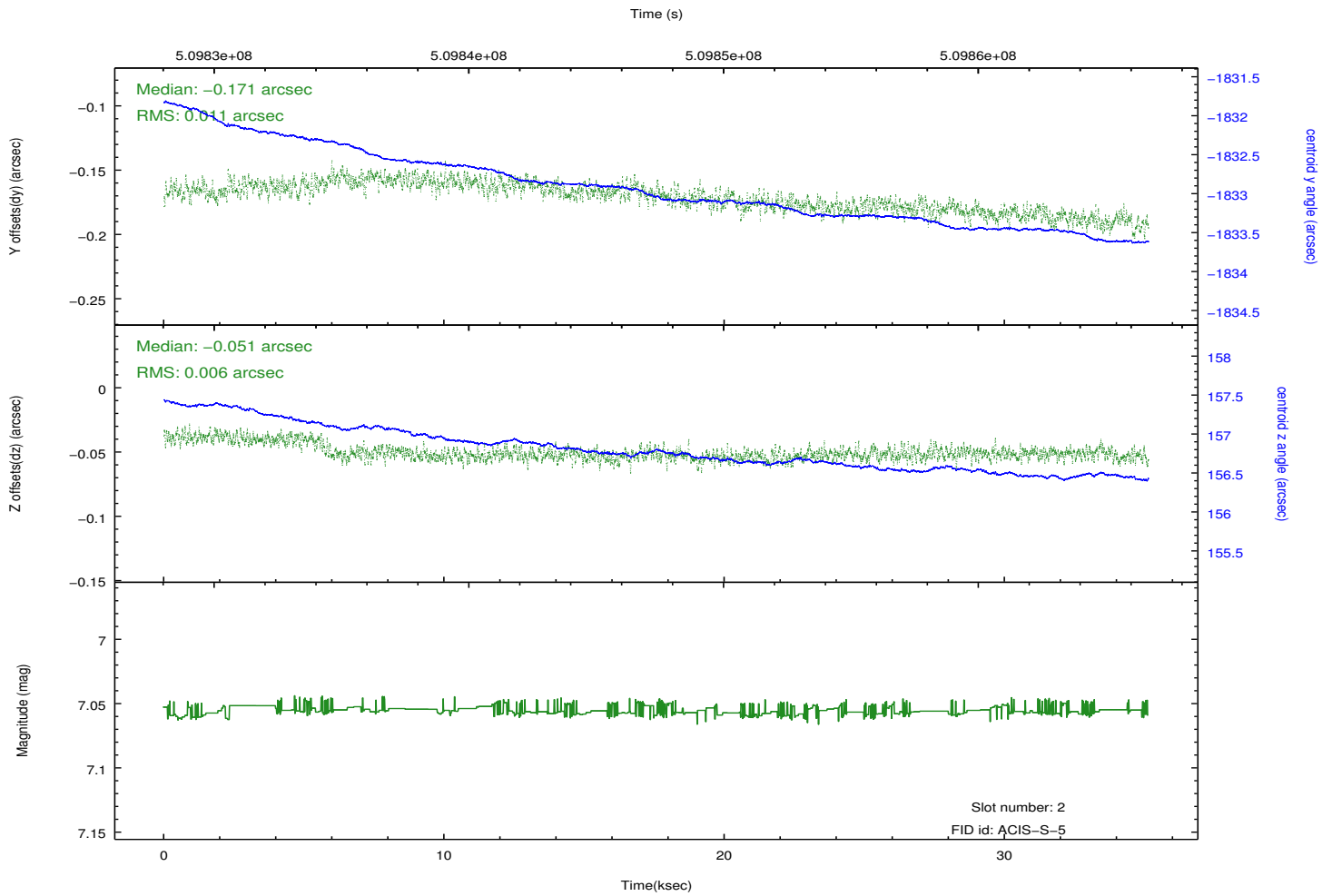
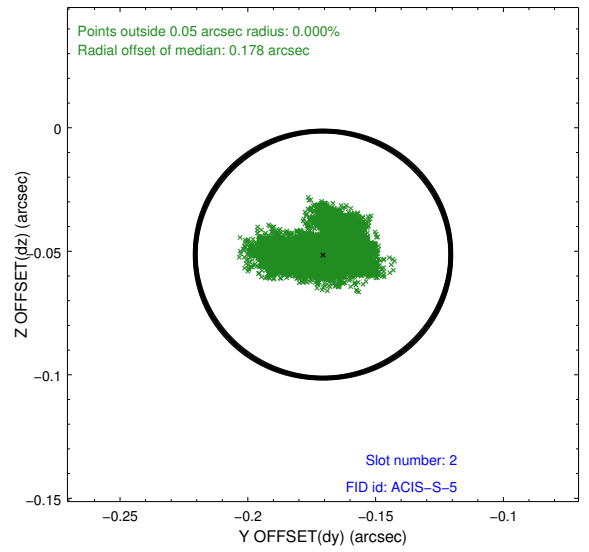
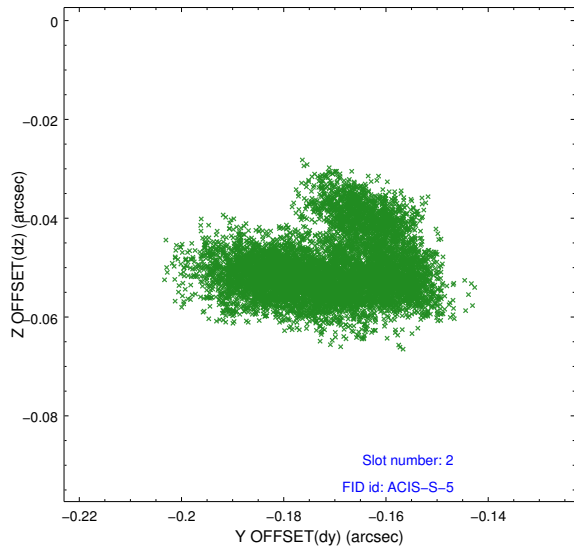
2.5.1 Slot 0



2.5.2 Slot 1



2.5.3 Slot 2



A Summary

A.1 Status

V&V Scientist	Beth Sundheim
V&V Date (YYYY-MM-DD)	2014.12.15
V&V Edition	1
V&V Disposition and Status	OK
V&V Charge Time	35.069997909665

A.2 Comments

These data have been reprocessed with new aspect alignment calibration files that correct small mean offsets (up to 0.4 arcsecs) and improve overall astrometric accuracy. The new calibration was determined using data from the time period being reprocessed and was performed using cross-correlation of X-ray sources with radio and optical counterparts.