

V&V Reference Report

L2 ASCDS Version : 10

Observation 15029 - L2 Version 2
Chandra X-Ray Center

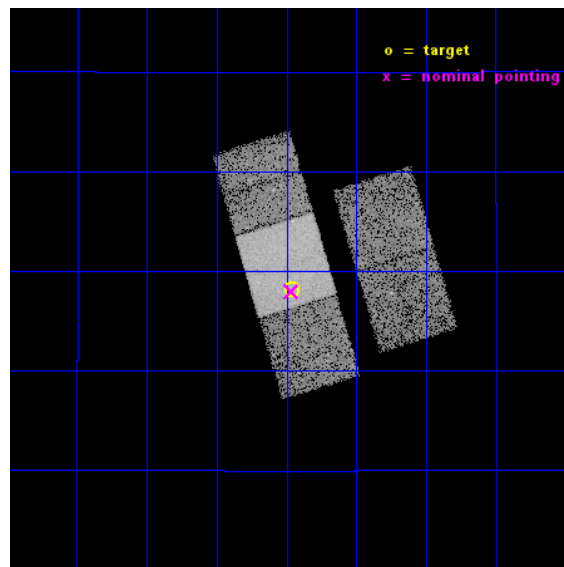
L2 Processing Date : Dec 5 2014

Contents

1	Front	2
2	OBI	3
2.1	OBI	3
2.1.1	Images	3
2.1.2	Bias	3
2.1.3	Parameters	4
2.1.4	Events	4
2.2	Compared Parameters	5
2.3	Aspect	6
2.4	Star Slots	9
2.4.1	Slot 3	9
2.4.2	Slot 4	10
2.4.3	Slot 5	11
2.4.4	Slot 6	12
2.4.5	Slot 7	13
2.5	FID Slots	14
2.5.1	Slot 0	14
2.5.2	Slot 1	15
2.5.3	Slot 2	16
A	Summary	17
A.1	Status	17
A.2	Comments	17

1 Front

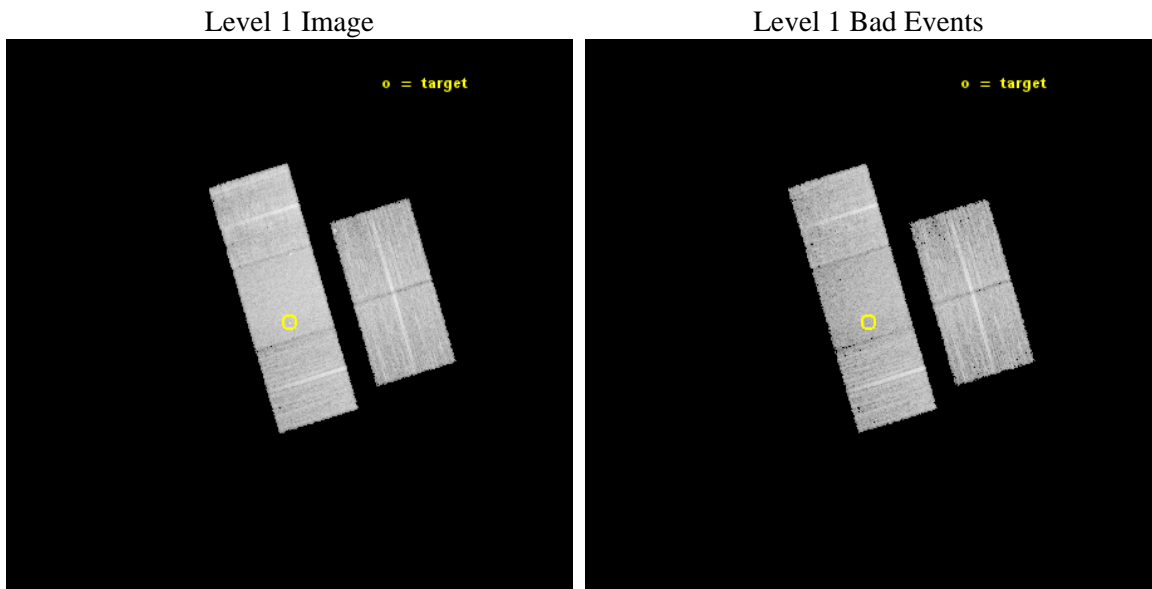
seq_num	702836	Sequence number
obs_id	15029	Observation id
title	Are Double-Peaked Optical Emission Lines Reliable Indicators of Dual AGNs?	Proposal title
observer	Dr. Claire Max	Principal investigator
object	SDSS J161027.41+130806.8	Source name
dtcycle	0	
cycle	P	events from which exps? Prim/Second/Both
ra_targ	242.614167	Observer's specified target RA [deg]
dec_targ	13.135222	Observer's specified target Dec [deg]
ra_nom	242.61619932671	Nominal RA [deg]
dec_nom	13.132918016905	Nominal Dec [deg]
roll_nom	253.25432864205	Nominal Roll [deg]
revision	2	Processing version of data
ontime	15069.100115895	Sum of GTIs [s]
livetime	14872.211229171	Livetime [s]
ontime2	15069.100115895	Sum of GTIs [s]
ontime3	15069.100115895	Sum of GTIs [s]
ontime6	15069.100115895	Sum of GTIs [s]
ontime7	15069.100115895	Sum of GTIs [s]
ontime8	15062.818155289	Sum of GTIs [s]
l2events	74430	Number of level 2 events



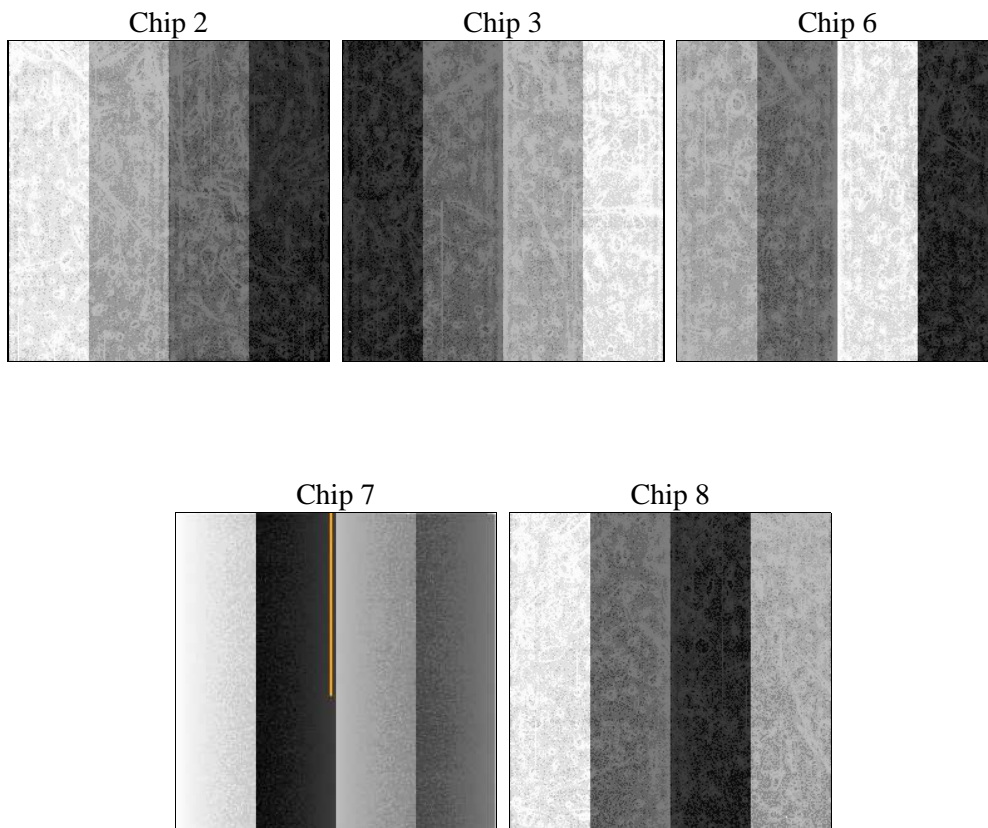
2 OBI

2.1 OBI

2.1.1 Images



2.1.2 Bias



2.1.3 Parameters

obi_num	0	Obi number	sched_exp_time	15000.000000	[s] Scheduled observation exposure time
ascdsver	10.3.1	Processing system revision	ontime	15069.100115895	Sum of GTIs [s]
caldbver	4.6.4	 	ontime2	15069.100115895	Sum of GTIs [s]
date	2014-12-06T03:08:13	Date and time of file creation	ontime3	15069.100115895	Sum of GTIs [s]
revision	2	Processing version of data	ontime6	15069.100115895	Sum of GTIs [s]
			ontime7	15069.100115895	Sum of GTIs [s]
			ontime8	15062.818155289	Sum of GTIs [s]
			l1events	412093	Number of level 1 events

2.1.4 Events

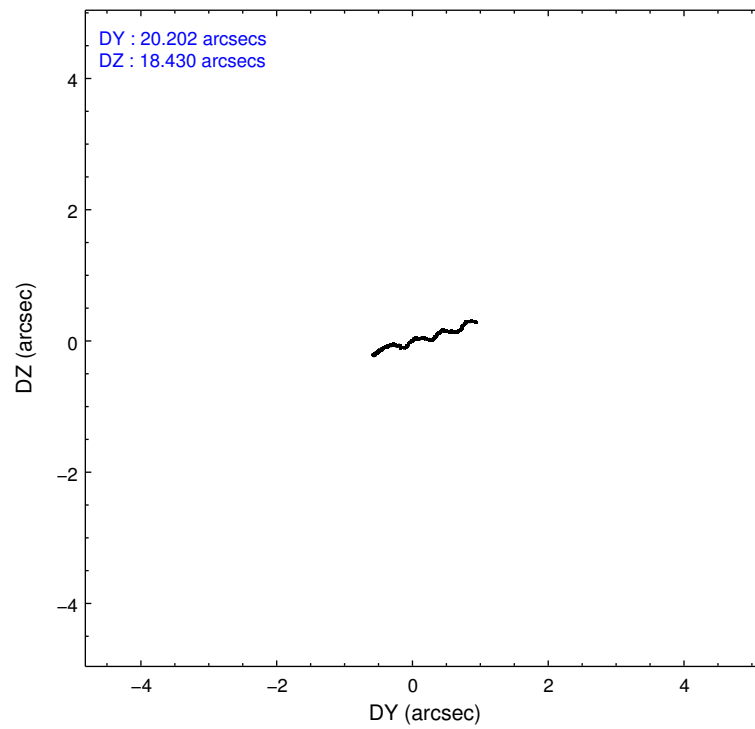
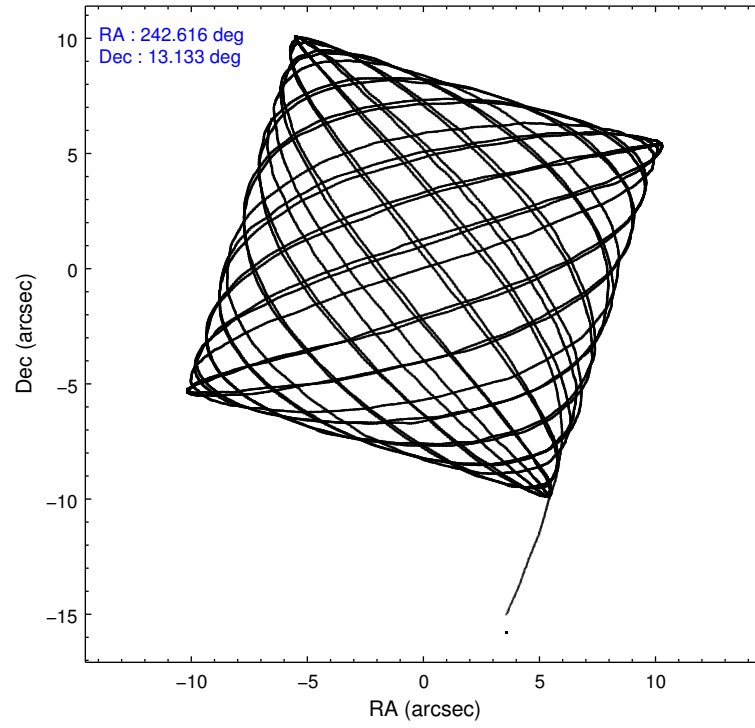
	ccd 2	ccd 3	ccd 6	ccd 7	ccd 8
level 1 events	70246	70958	72671	100758	97460
rejected events	61837	62657	63550	56490	71193
rejected %	88%	88%	87%	56%	73%

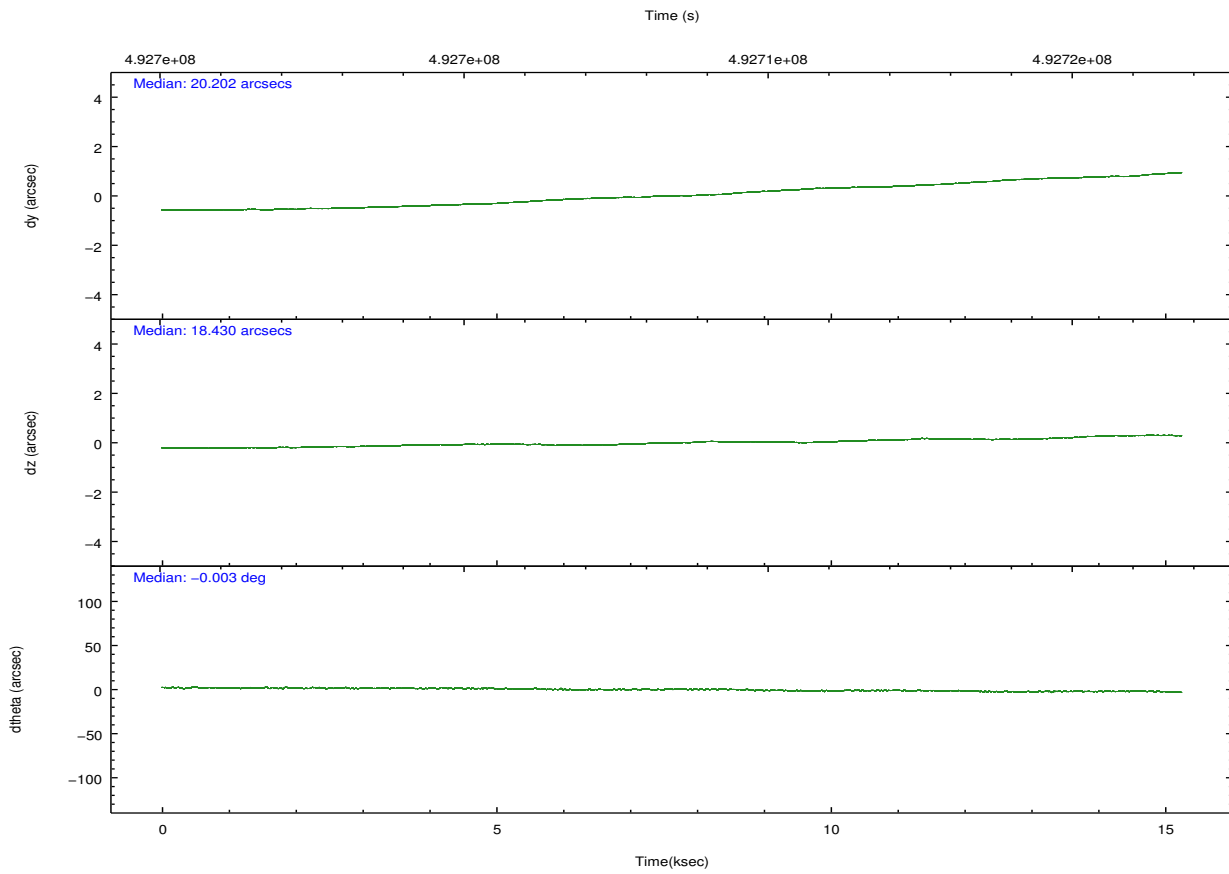
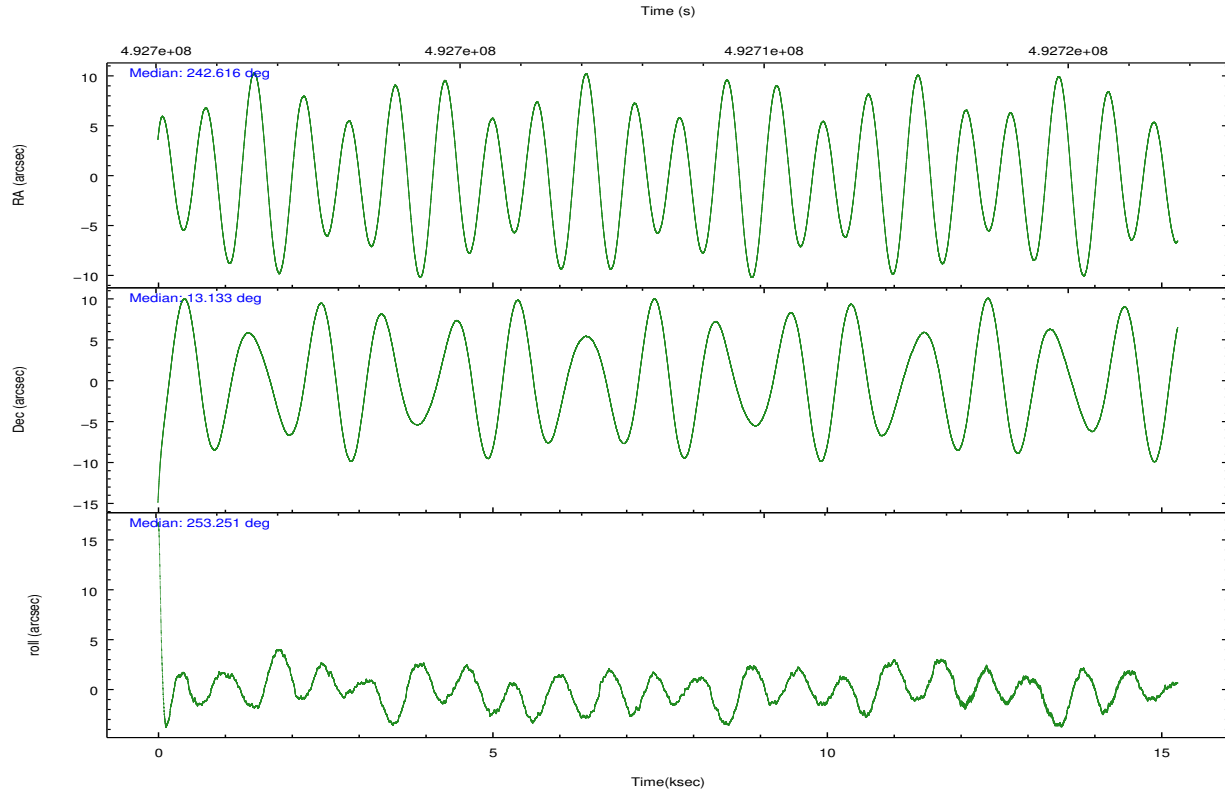
	ccd 2	ccd 3	ccd 6	ccd 7	ccd 8
grade 0 events	3016	3011	3225	4098	7786
	4%	4%	4%	4%	7%
grade 1 events	43	37	31	129	62
	0%	0%	0%	0%	0%
grade 2 events	2045	1760	2084	9013	6104
	2%	2%	2%	8%	6%
grade 3 events	881	860	889	3761	2799
	1%	1%	1%	3%	2%
grade 4 events	844	890	870	3749	2568
	1%	1%	1%	3%	2%
grade 5 events	3265	3823	3860	10628	5529
	4%	5%	5%	10%	5%
grade 6 events	1624	1781	2054	23652	7011
	2%	2%	2%	23%	7%
grade 7 events	58528	58796	59658	45728	65601
	83%	82%	82%	45%	67%

2.2 Compared Parameters

Parameter	Planned	Actual	Parameter	Planned	Actual
Instrument	ACIS	ACIS	Obspar format version number	7	7
Detector	ACIS-23678	ACIS-23678	Obspar file type	PREDICTED	ACTUAL
Grating	NONE	NONE	Obspar update status	NONE	UPDATED
Data mode	VFAINT	VFAINT	CCD I0 on	N	N
Observation mode	POINTING	POINTING	CCD I1 on	N	N
[deg] Pointing RA	242.609379	242.6161993267118	CCD I2 on	O2	Y
[deg] Pointing Dec	13.159456	13.13291801690464	CCD I3 on	O3	Y
[deg] Pointing Roll	253.099236	253.2543286420467	CCD S0 on	N	N
[mm] SIM focus pos	-0.684267	-0.6828225247311905	CCD S1 on	N	N
[mm] SIM defocus	0	0.001444936568705701	CCD S2 on	O4	Y
[mm] SIM translation stage pos	-190.132523	-190.1425803651734	CCD S3 on	Y	Y
[mm] SIM translation stage offset	0	0.01005778216563158	CCD S4 on	O1	Y
[s] Observation start time (MET)	492701039.184000	492700067.06274	CCD S5 on	N	N
Observation start date	2013-08-12T13:22:52	2013-08-12T13:07:47	Number of optional ACIS chips dropped	0	0
[s] Observation end time (MET)	492716039.184000	492716668.98865	On-chip summing requested	N	N
Observation end date	2013-08-12T17:32:52	2013-08-12T17:44:28	Subarray requested	NONE	NONE
Read mode	TIMED	TIMED	Alternating exposures requested	N	N
			[s] Primary exposure time	0.000000	3.1

2.3 Aspect





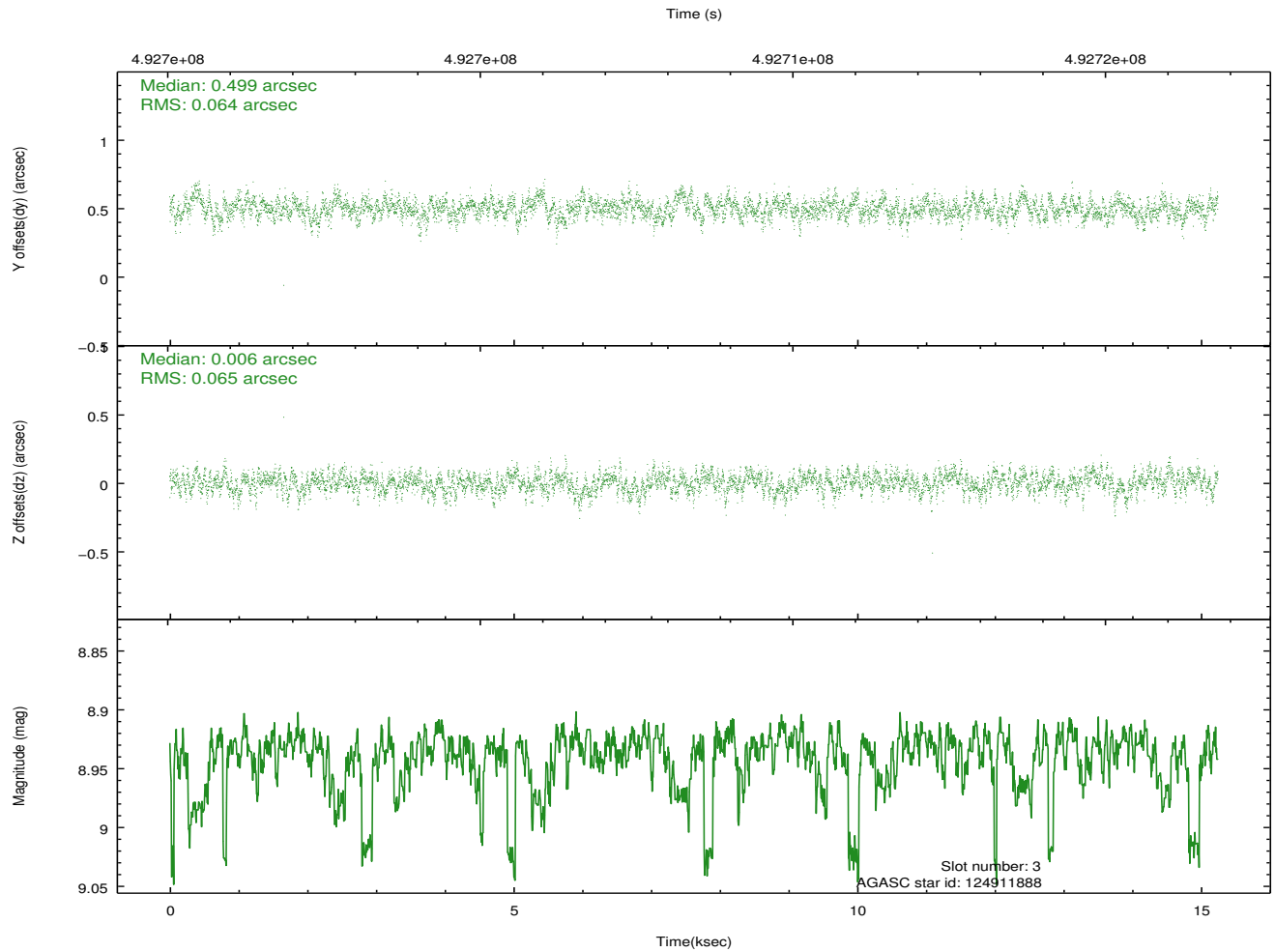
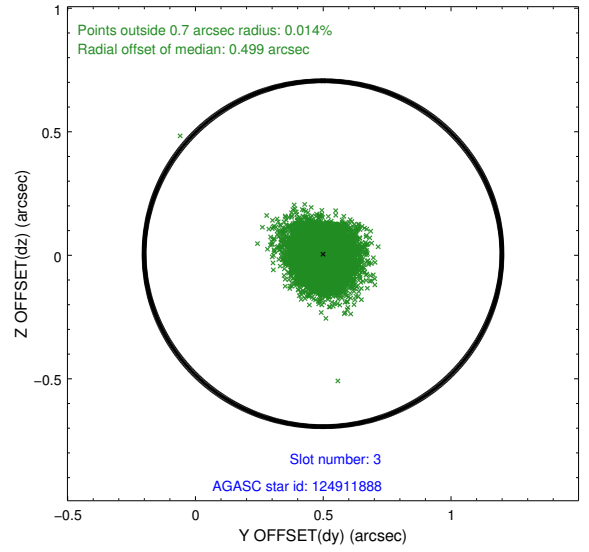
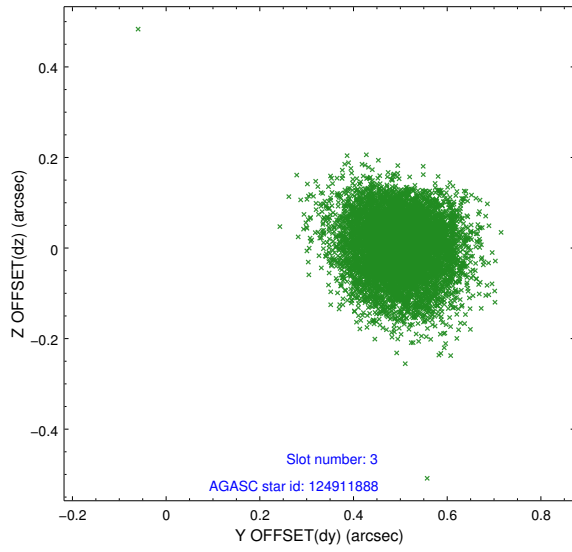
Slot Statistics

slot	status	used	id	mag	n_pts	med_dy	med_dz	dr1	dr2	ra	dec	mean_y	mean_z
0	FID		ACIS-S-2	6.99	3719	-0.124	-0.073	0.010	0.017	0.000000	0.000000	-773.53	-1739.91
1	FID		ACIS-S-4	7.08	3719	0.286	0.079	0.019	0.028	0.000000	0.000000	2140.06	168.36
2	FID		ACIS-S-5	7.10	3719	-0.192	0.002	0.021	0.028	0.000000	0.000000	-1826.02	162.37
3	GUIDE	used	124911888	8.94	7408	0.499	0.006	0.097	0.156	242.022491	12.839788	1698.39	-1637.24
4	GUIDE	used	124914864	8.43	7436	0.500	-0.154	0.071	0.116	241.987729	12.768723	1978.89	-1680.29
5	GUIDE	used	124915912	7.89	7436	-0.887	-0.300	0.071	0.115	242.302515	12.932327	1094.33	-792.93
6	GUIDE	used	125442240	8.73	7437	0.120	0.588	0.080	0.130	242.151284	13.907464	-2112.09	-2314.46
7	GUIDE	used	125573144	8.40	7436	-0.230	-0.139	0.079	0.128	243.291183	13.239468	-973.79	2201.11

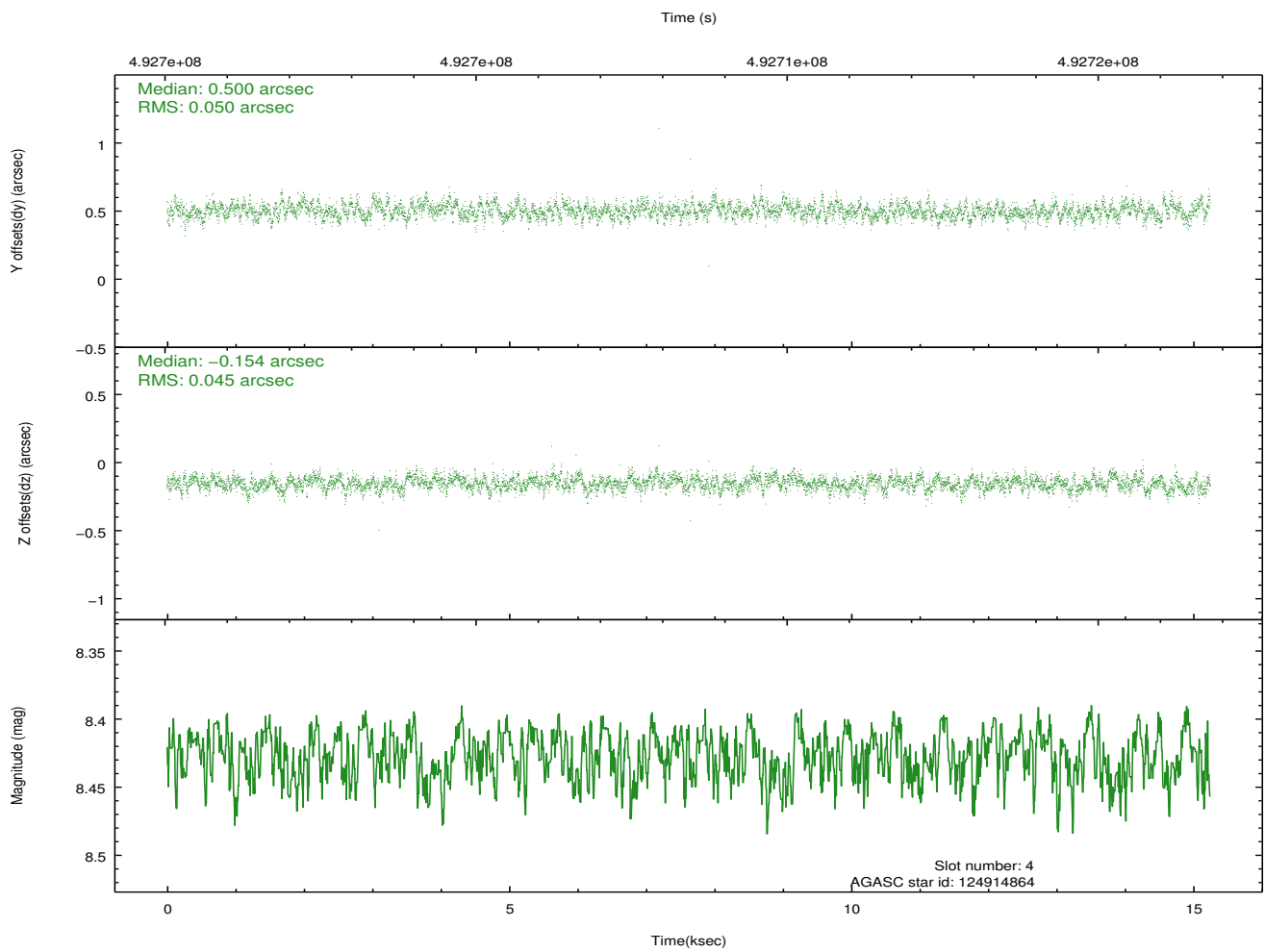
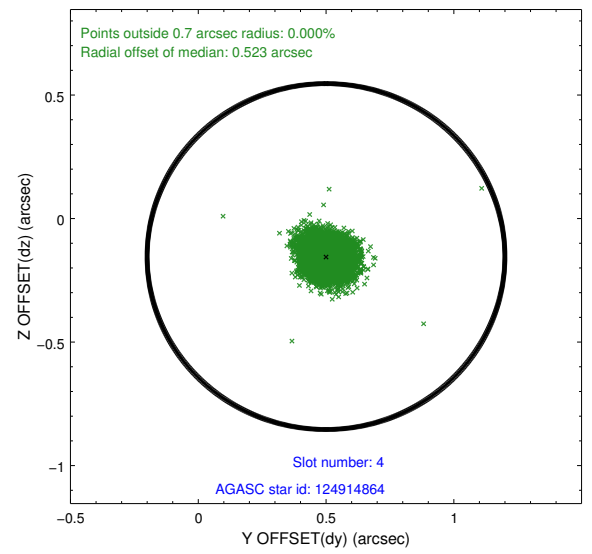
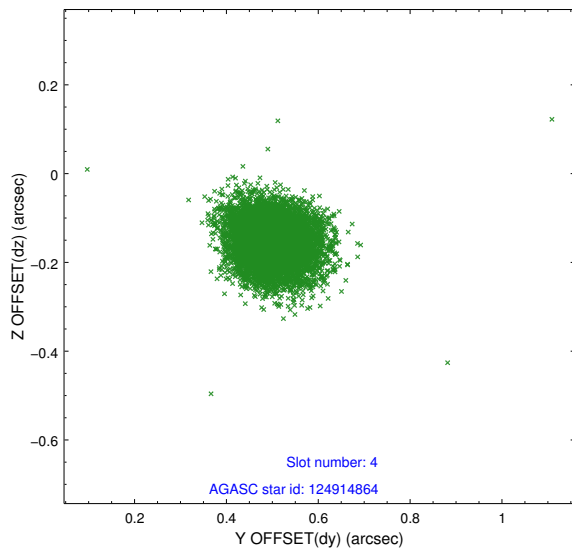
∞

2.4 Star Slots

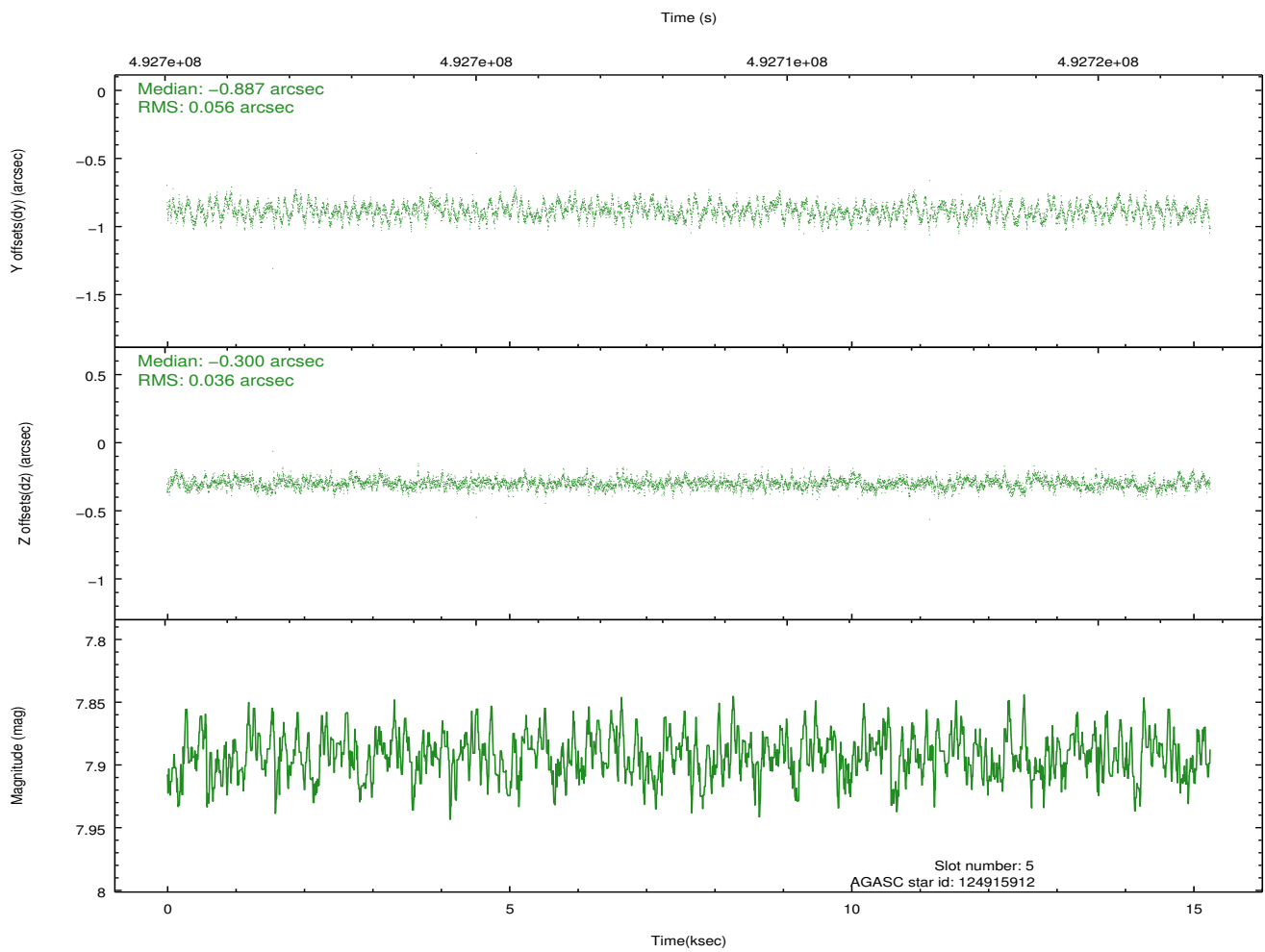
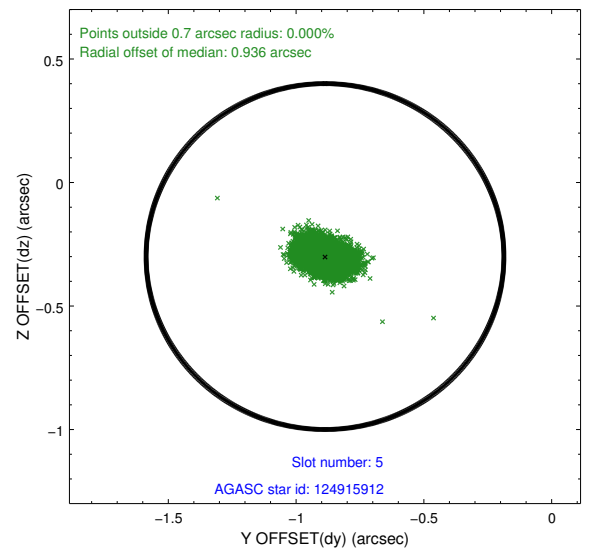
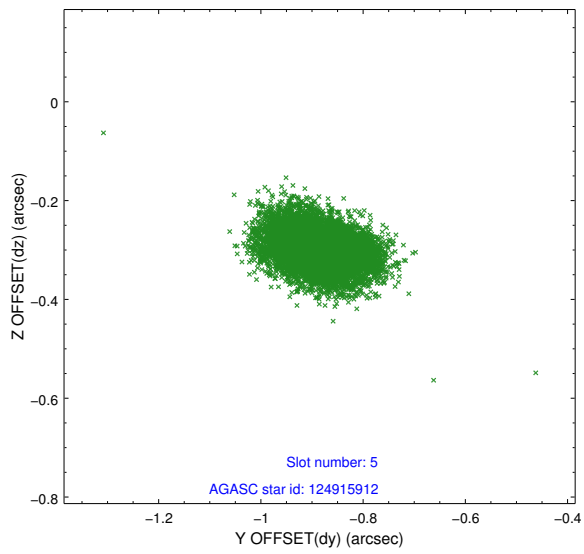
2.4.1 Slot 3



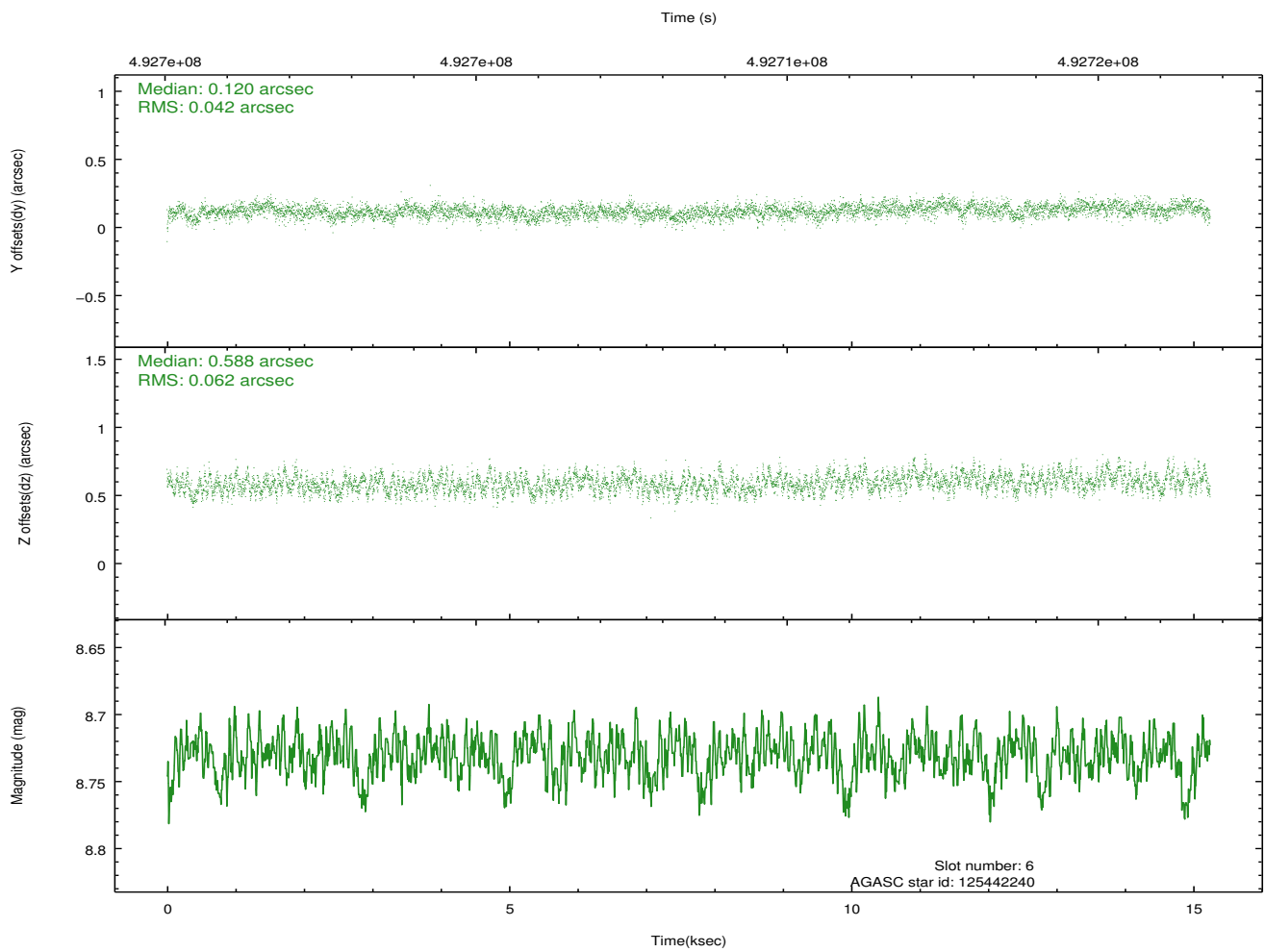
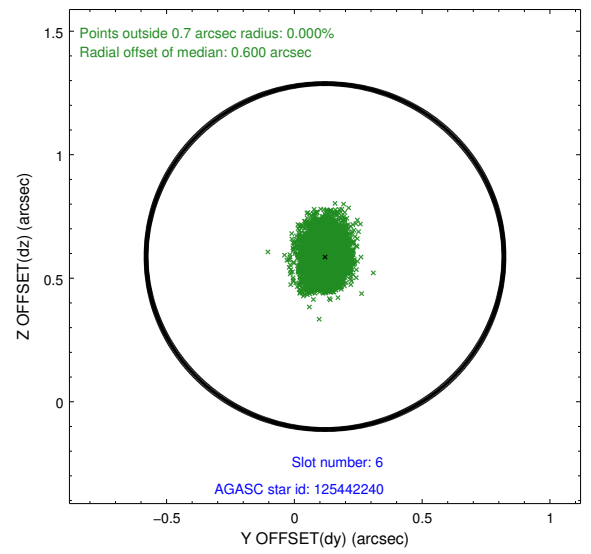
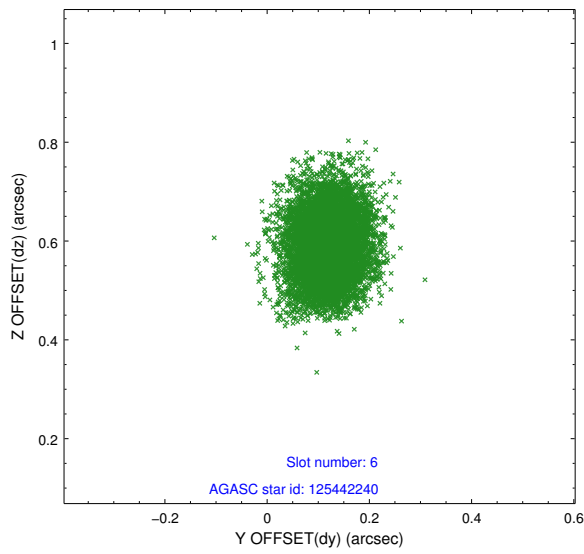
2.4.2 Slot 4



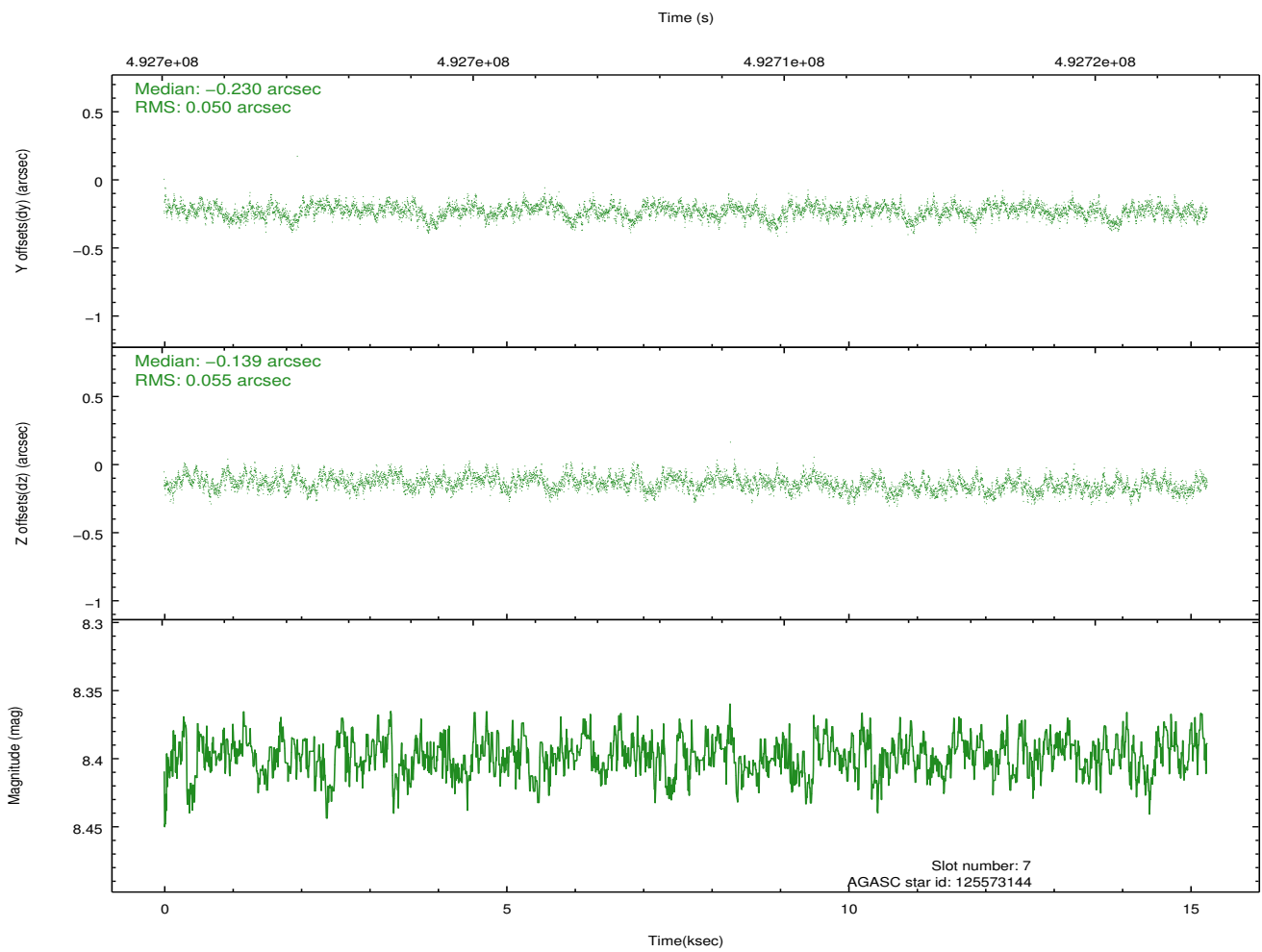
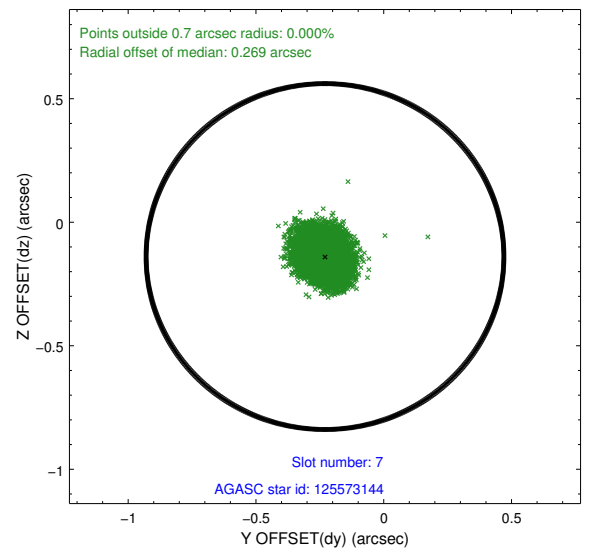
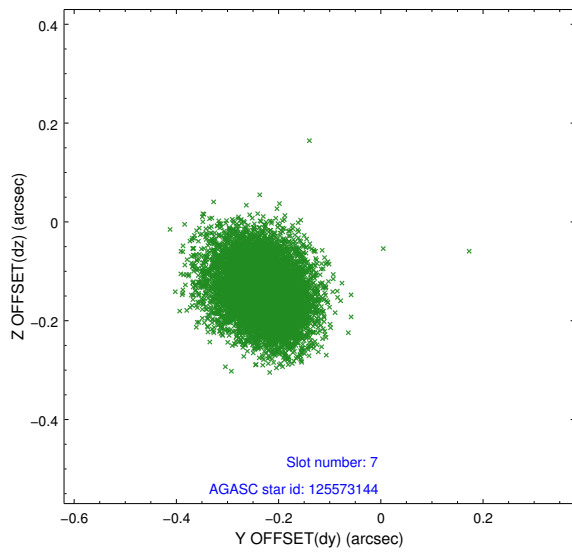
2.4.3 Slot 5



2.4.4 Slot 6

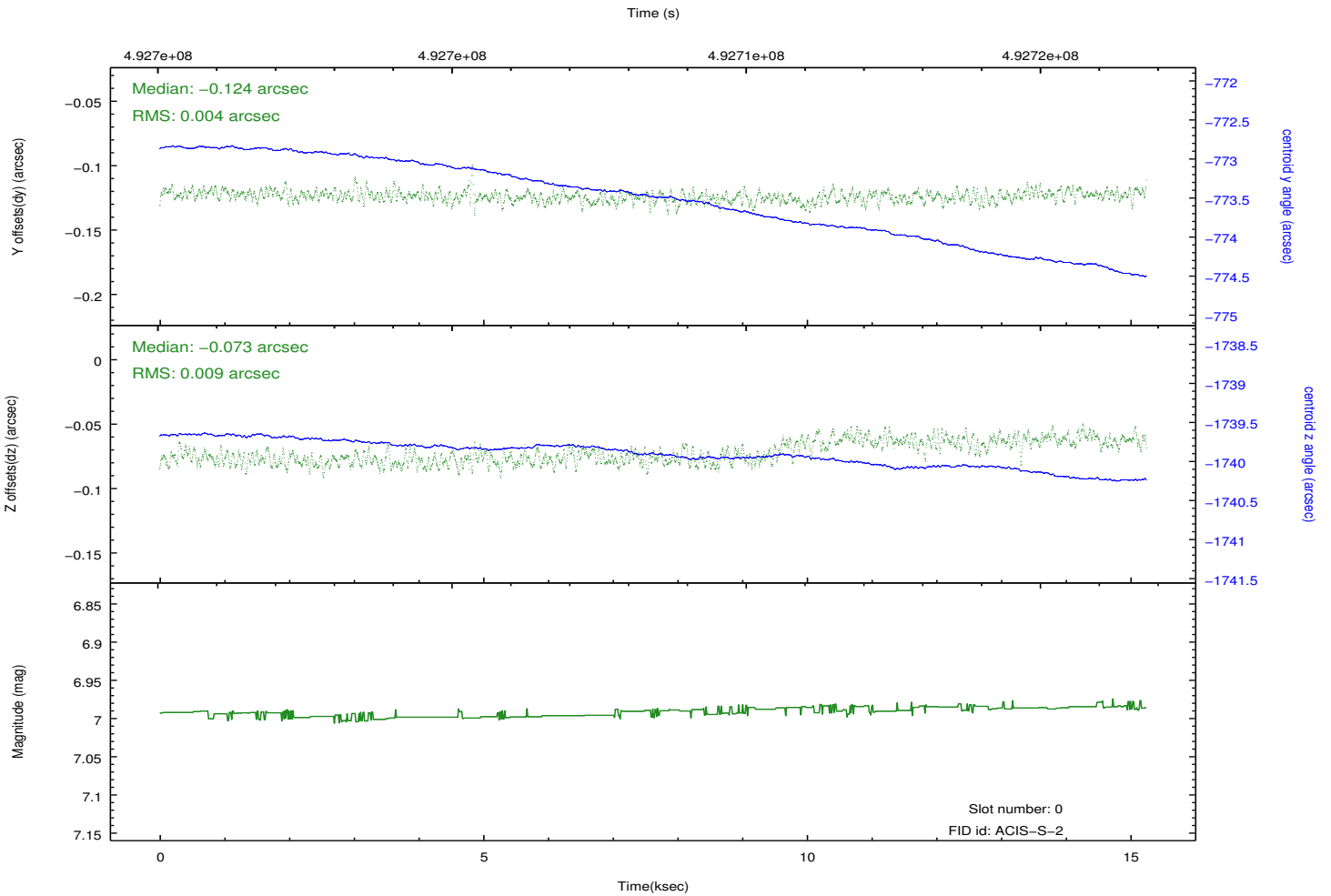
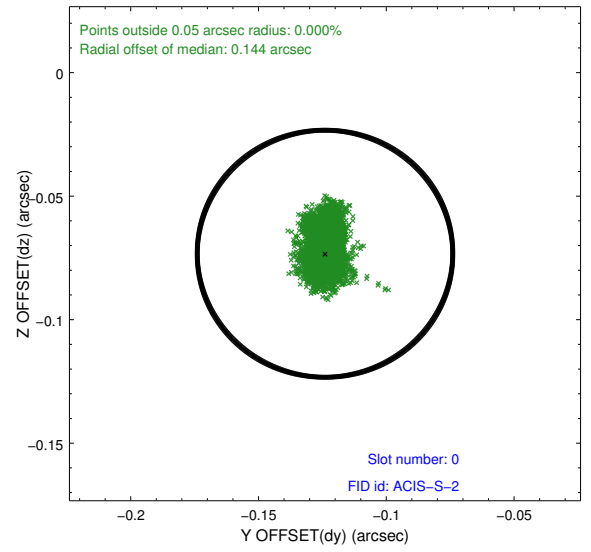
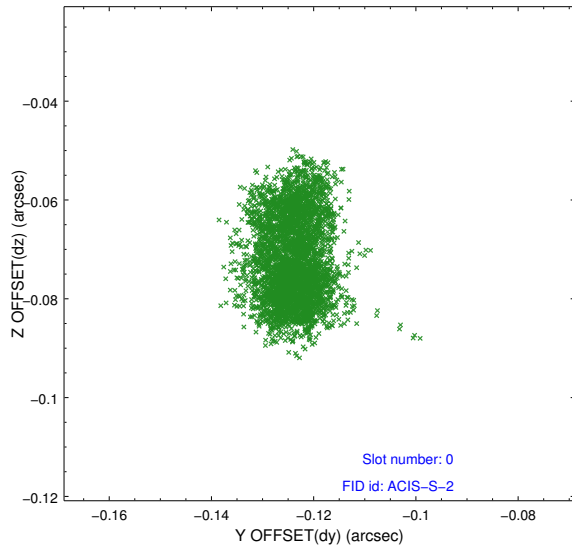


2.4.5 Slot 7

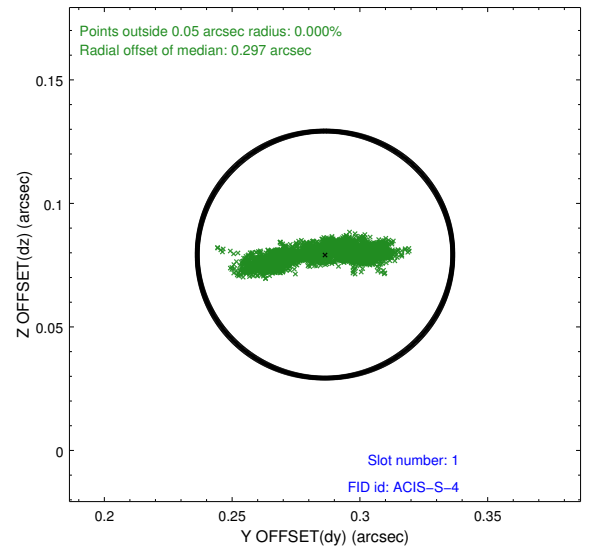
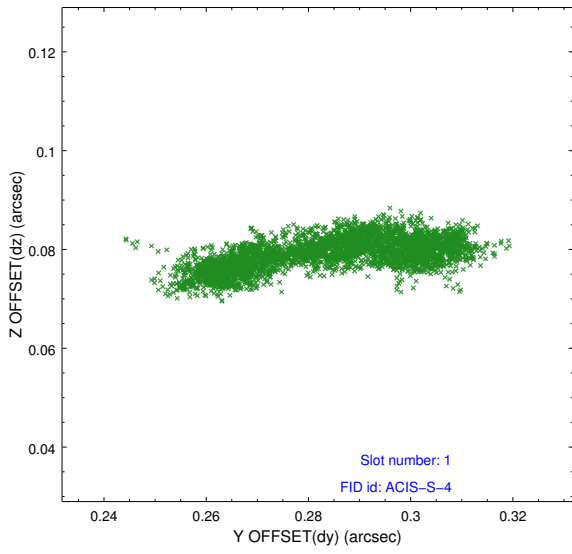


2.5 FID Slots

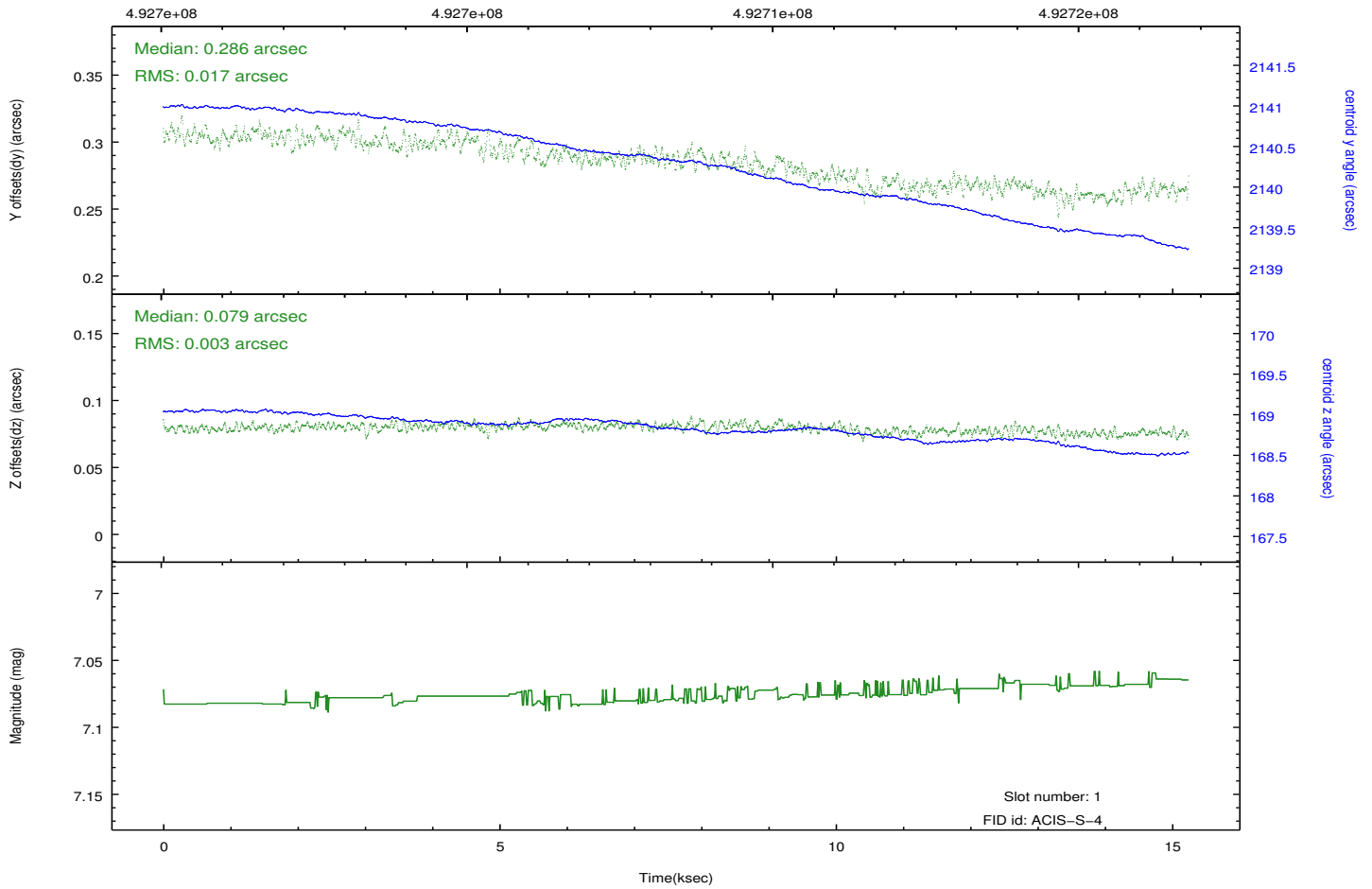
2.5.1 Slot 0



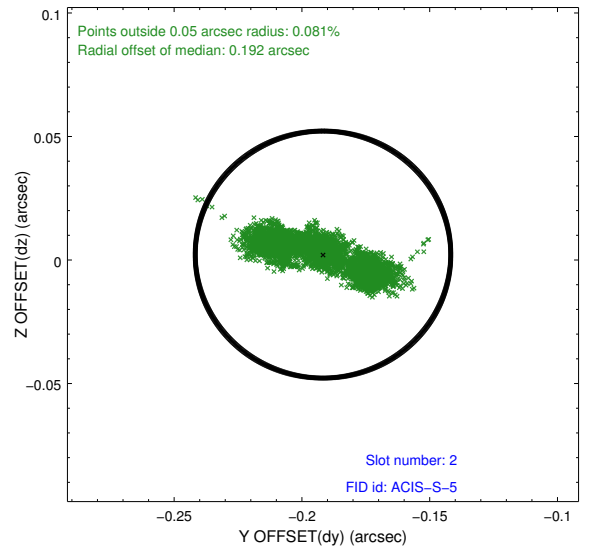
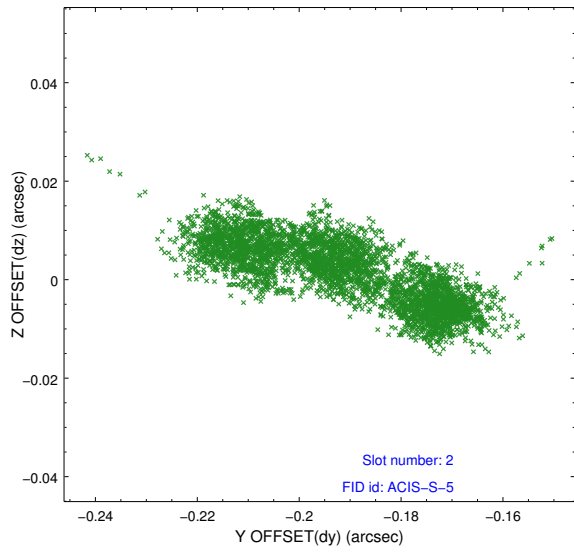
2.5.2 Slot 1



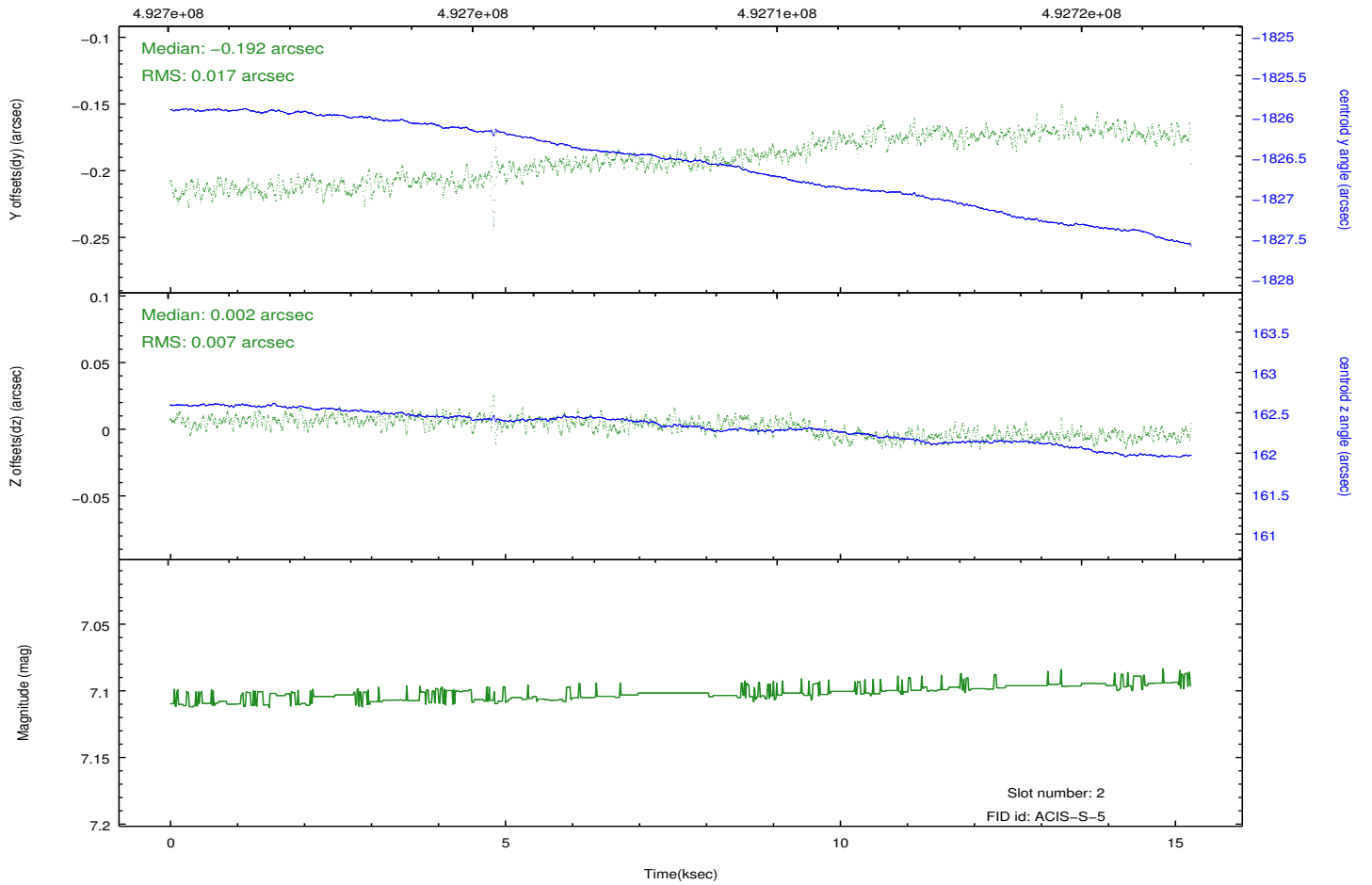
Time (s)



2.5.3 Slot 2



Time (s)



A Summary

A.1 Status

V&V Scientist	Beth Sundheim
V&V Date (YYYY-MM-DD)	2014.12.11
V&V Edition	1
V&V Disposition and Status	OK
V&V Charge Time	15.069100115895

A.2 Comments

These data have been reprocessed with new aspect alignment calibration files that correct small mean offsets (up to 0.4 arcsecs) and improve overall astrometric accuracy. The new calibration was determined using data from the time period being reprocessed and was performed using cross-correlation of X-ray sources with radio and optical counterparts.