

V&V Reference Report

L2 ASCDS Version : 8.4.5

Observation 15209 - L2 Version 2
Chandra X-Ray Center

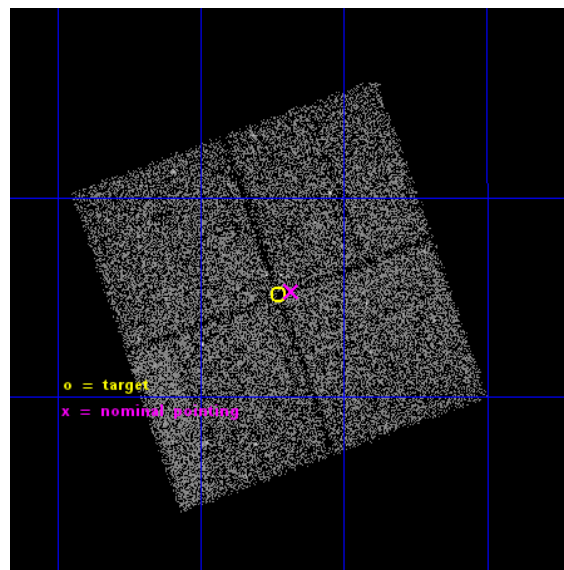
L2 Processing Date : Nov 30 2014

Contents

1	Front	2
2	OBI	3
2.1	OBI	3
2.1.1	Images	3
2.1.2	Bias	3
2.1.3	Parameters	4
2.1.4	Events	4
2.2	Compared Parameters	5
2.3	Aspect	6
2.4	Star Slots	9
2.4.1	Slot 3	9
2.4.2	Slot 4	10
2.4.3	Slot 5	11
2.4.4	Slot 6	12
2.4.5	Slot 7	13
2.5	FID Slots	14
2.5.1	Slot 0	14
2.5.2	Slot 1	15
2.5.3	Slot 2	16
A	Summary	17
A.1	Status	17
A.2	Comments	17

1 Front

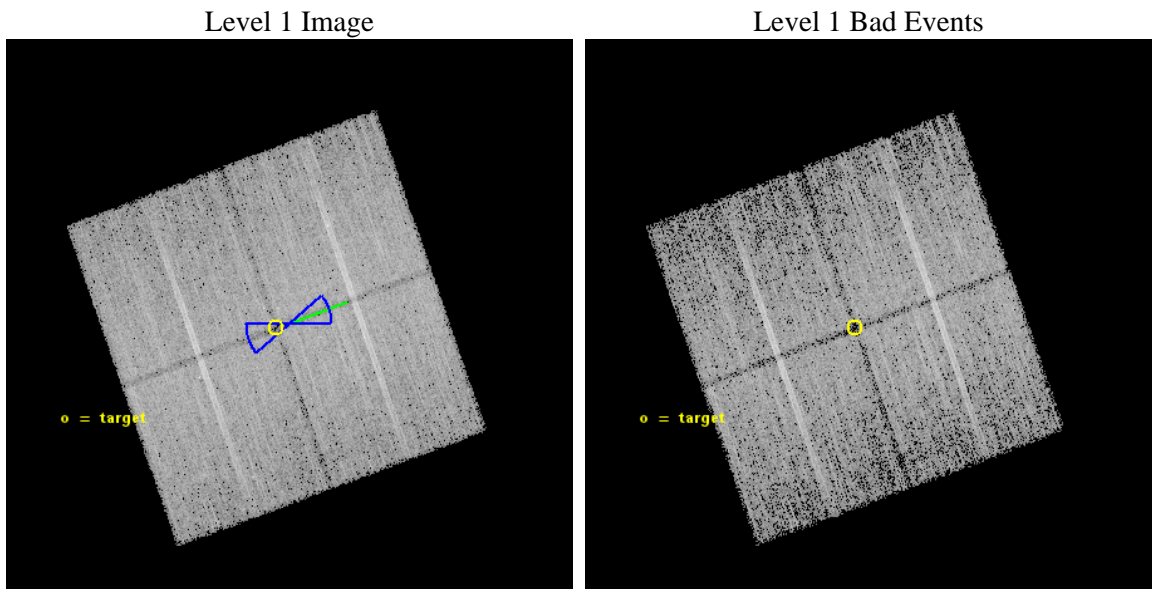
seq_num	901039	Sequence number
obs_id	15209	Observation id
title	The COSMOS Legacy Survey	Proposal title
observer	Dr Francesca Civano	Principal investigator
object	COSMOS Legacy	Source name
dtcycle	0	
cycle	P	events from which exps? Prim/Second/Both
ra_targ	150.30715	Observer's specified target RA [deg]
dec_targ	2.585492	Observer's specified target Dec [deg]
ra_nom	150.29574967677	Nominal RA [deg]
dec_nom	2.5880831797419	Nominal Dec [deg]
roll_nom	70.20921211549	Nominal Roll [deg]
revision	2	Processing version of data
ontime	24090.100185275	Sum of GTIs [s]
livetime	23775.345291481	Livetime [s]
ontime0	24086.959204912	Sum of GTIs [s]
ontime1	24090.100185275	Sum of GTIs [s]
ontime2	24086.959214926	Sum of GTIs [s]
ontime3	24086.959174931	Sum of GTIs [s]
l2events	48942	Number of level 2 events



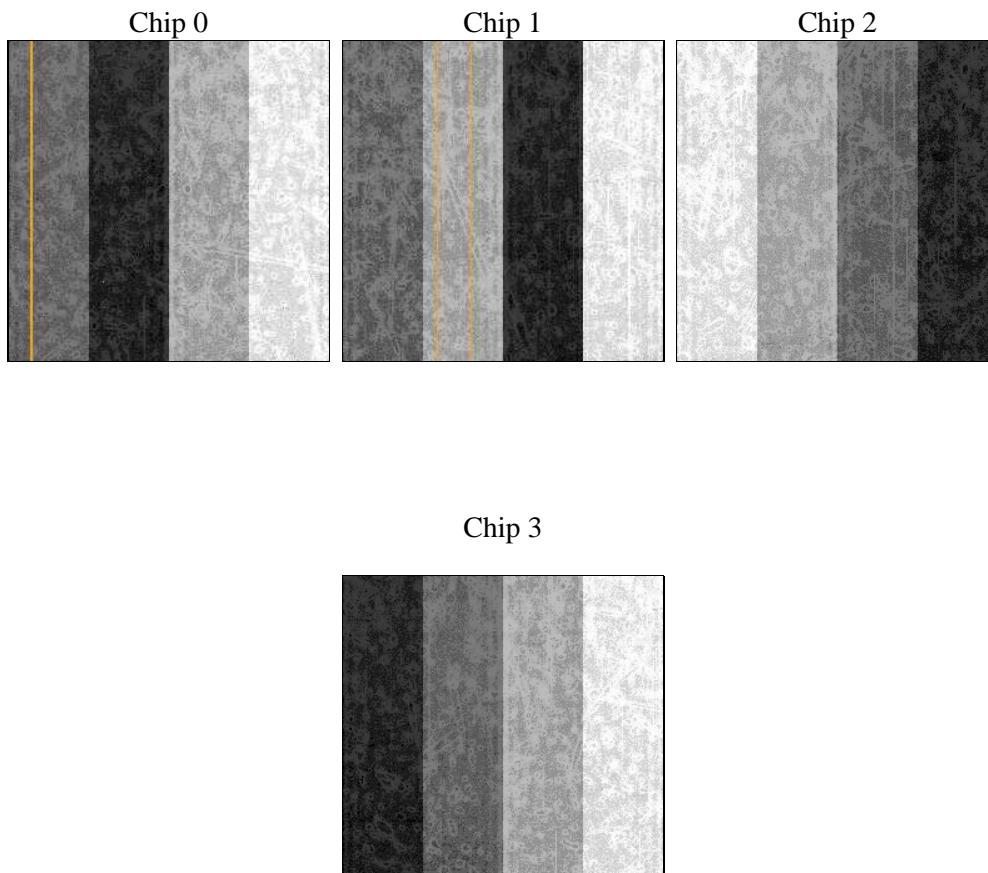
2 OBI

2.1 OBI

2.1.1 Images



2.1.2 Bias



2.1.3 Parameters

obi_num	0	Obi number	sched_exp_time	24000.000000	[s] Scheduled observation exposure time
ascdsver	10.3	Processing system revision	ontime	24090.100185275	Sum of GTIs [s]
caldsver	4.6.4	 	ontime0	24086.959204912	Sum of GTIs [s]
date	2014-11-30T03:00:12	Date and time of file creation	ontime1	24090.100185275	Sum of GTIs [s]
revision	2	Processing version of data	ontime2	24086.959214926	Sum of GTIs [s]
			ontime3	24086.959174931	Sum of GTIs [s]
			l1events	458737	Number of level 1 events

2.1.4 Events

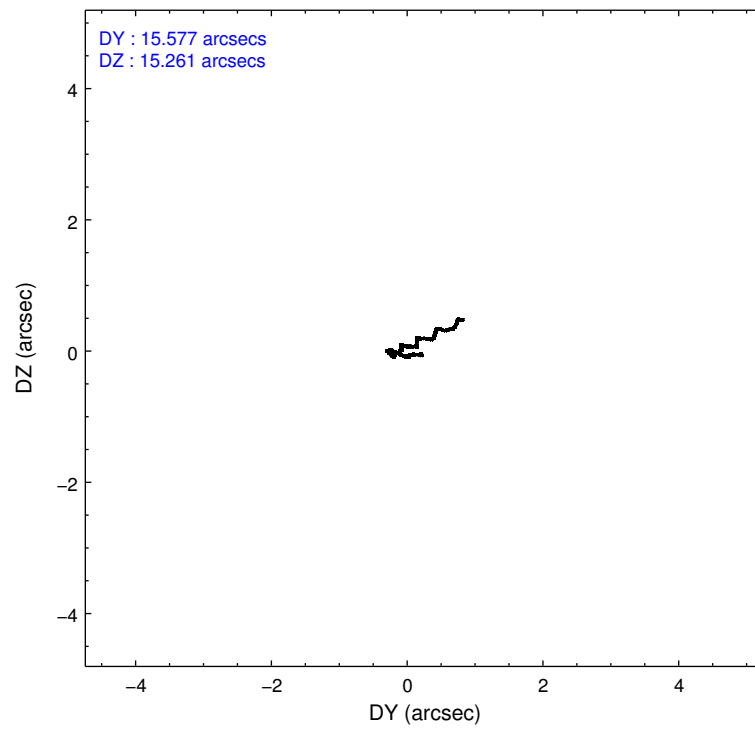
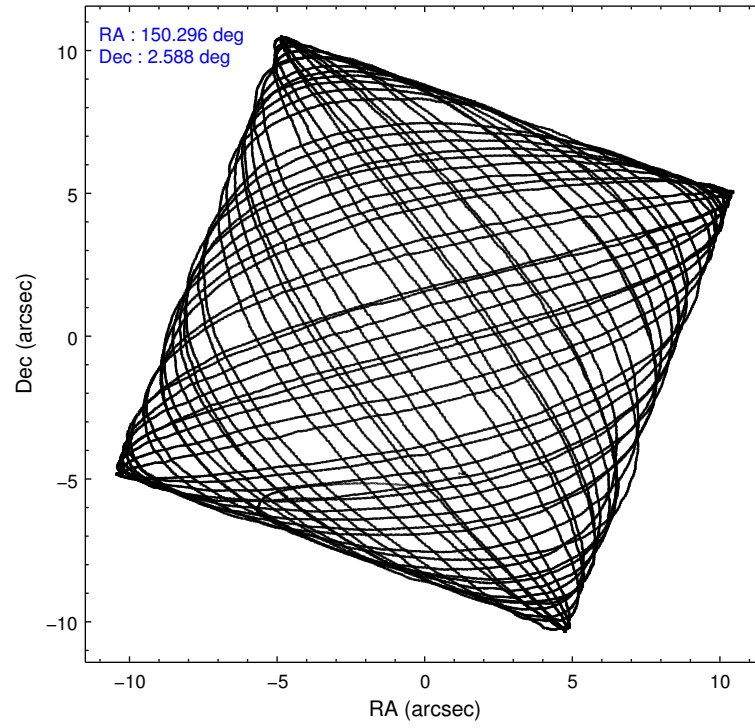
	ccd 0	ccd 1	ccd 2	ccd 3
level 1 events	108725	111380	119657	118975
rejected events	94235	95068	105661	105359
rejected %	86%	85%	88%	88%

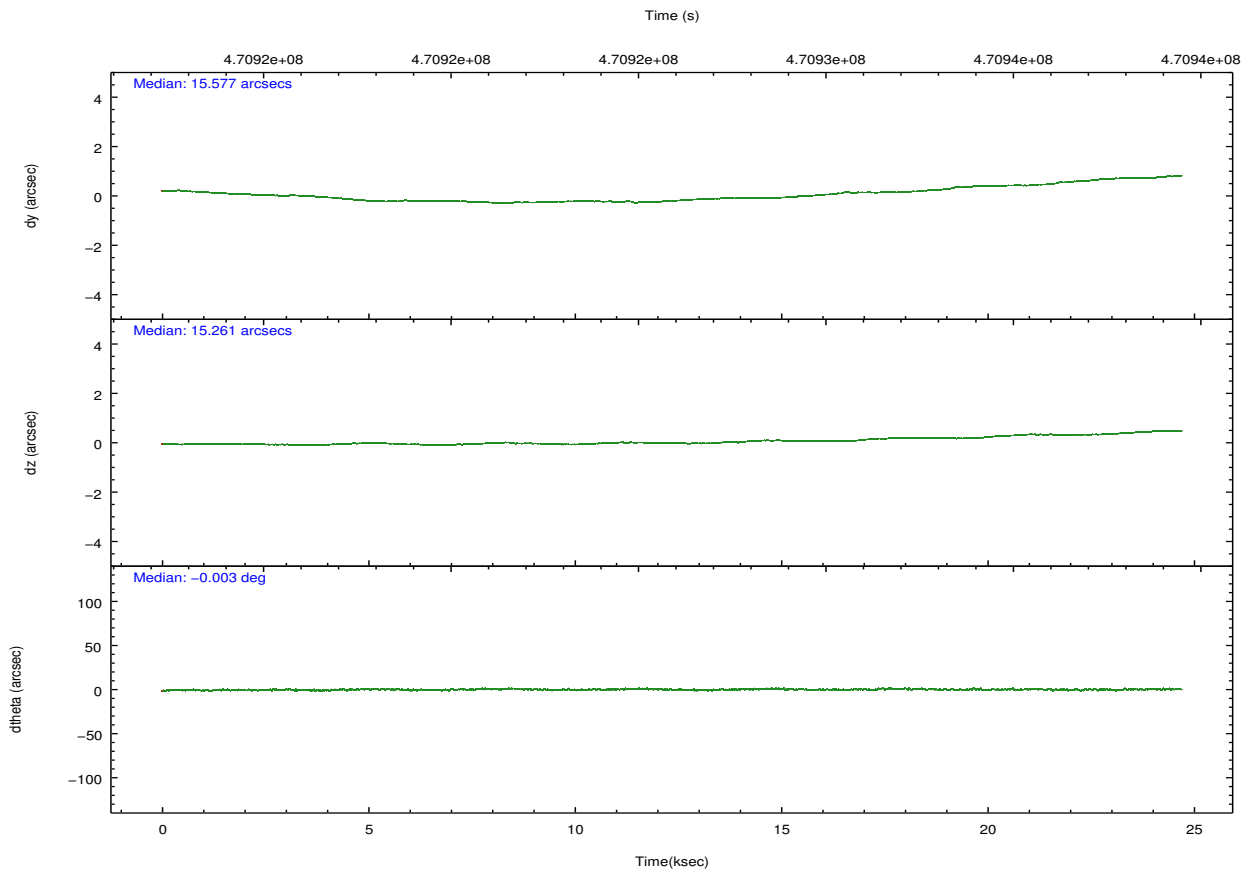
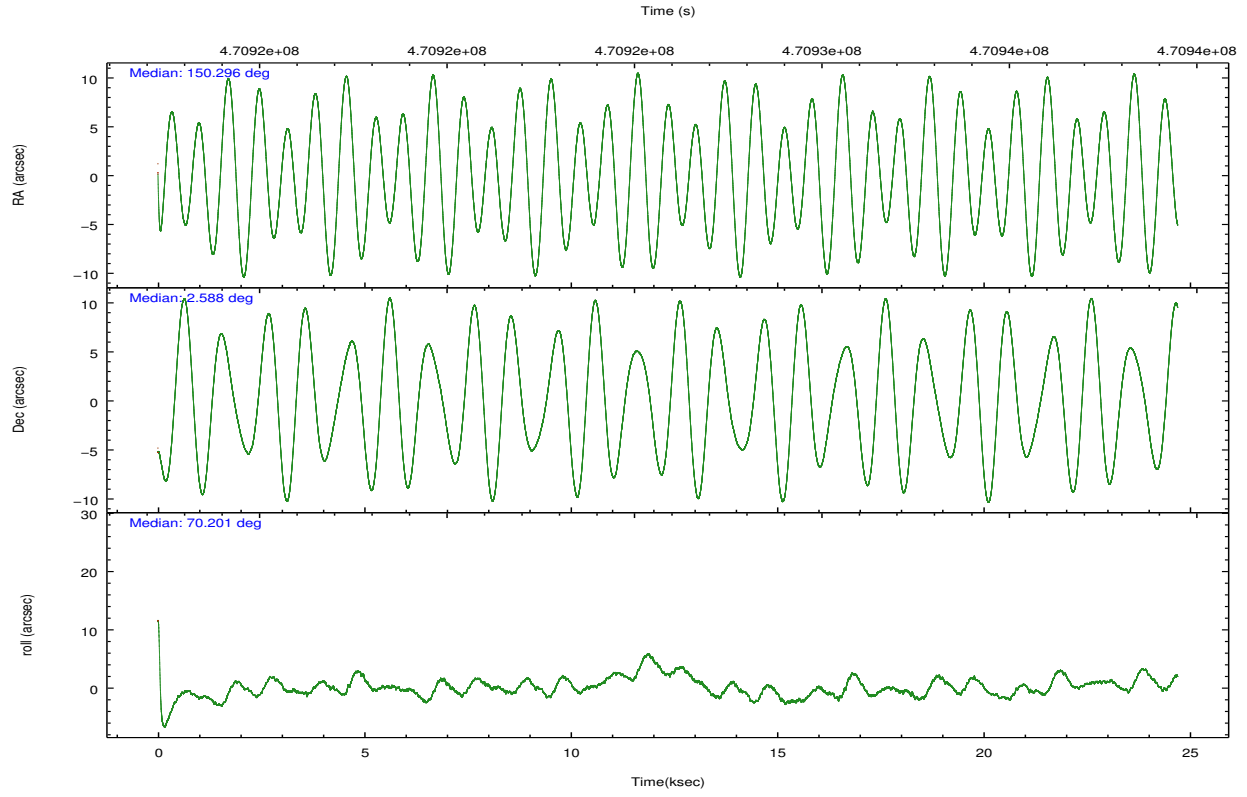
	ccd 0	ccd 1	ccd 2	ccd 3
grade 0 events	4984	5895	4855	4685
	4%	5%	4%	3%
grade 1 events	66	66	76	67
	0%	0%	0%	0%
grade 2 events	3548	3865	3516	3056
	3%	3%	2%	2%
grade 3 events	1558	1630	1454	1438
	1%	1%	1%	1%
grade 4 events	1449	1571	1449	1518
	1%	1%	1%	1%
grade 5 events	5674	5998	5449	6455
	5%	5%	4%	5%
grade 6 events	2953	3351	2723	2921
	2%	3%	2%	2%
grade 7 events	88493	89004	100135	98835
	81%	79%	83%	83%

2.2 Compared Parameters

Parameter	Planned	Actual	Parameter	Planned	Actual
Instrument	ACIS	ACIS	Obspar format version number	7	7
Detector	ACIS-0123	ACIS-0123	Obspar file type	PREDICTED	ACTUAL
Grating	NONE	NONE	Obspar update status	NONE	UPDATED
Data mode	VFAINT	VFAINT	Number of optional ACIS chips dropped	0	0
Observation mode	POINTING	POINTING	On-chip summing requested	N	N
[deg] Pointing RA	150.300729	150.2957496767737	Subarray requested	NONE	NONE
[deg] Pointing Dec	2.561045	2.588083179741917	Alternating exposures requested	N	N
[deg] Pointing Roll	70.000288	70.20921211549012	[s] Primary exposure time	0.000000	3.1
[deg] Roll angle	250.000000	250.000000			
[deg] Roll tolerance	20.000000	20.000000			
Roll constraint allows 180D rotation	Y	Y			
[mm] SIM focus pos	-0.782348	-0.7809083437167272			
[mm] SIM defocus	0	0.001439871863259334			
[mm] SIM translation stage pos	-233.592463	-233.5874344608287			
[mm] SIM translation stage offset	0	-0.005018542100998502			
[s] Observation start time (MET)	470914226.184000	470912725.3331			
Observation start date	2012-12-03T09:29:19	2012-12-03T09:05:25			
[s] Observation end time (MET)	470938226.184000	470938926.38451			
Observation end date	2012-12-03T16:09:19	2012-12-03T16:22:06			
Read mode	TIMED	TIMED			

2.3 Aspect





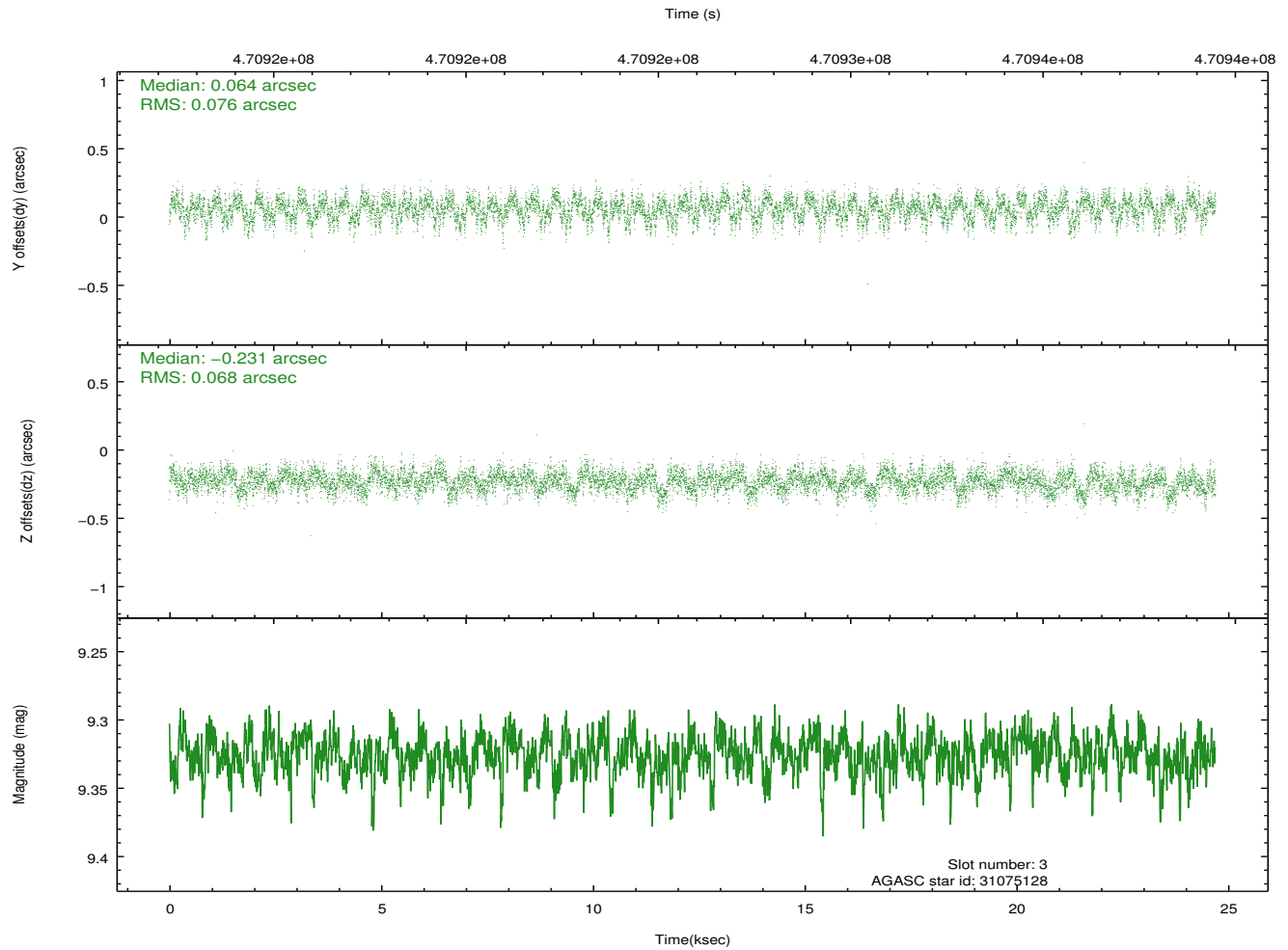
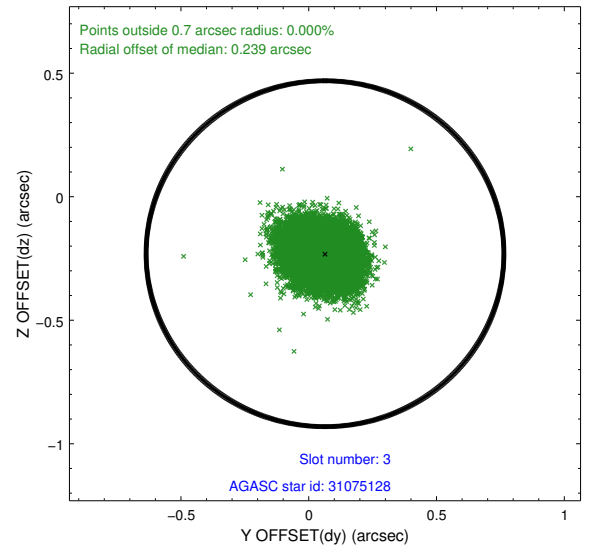
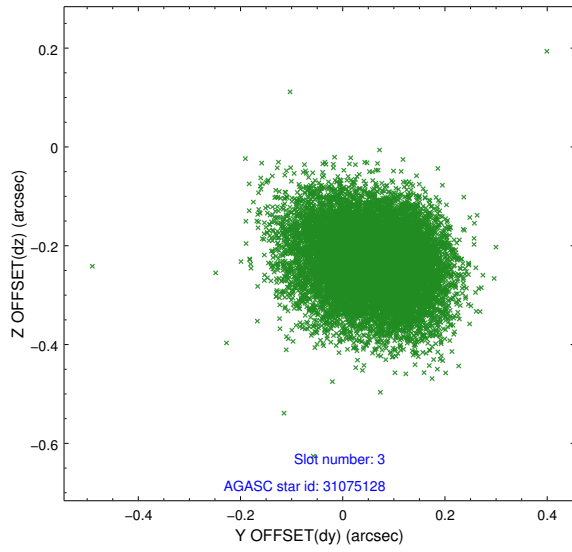
Slot Statistics

slot	status	used	id	mag	n_pts	med_dy	med_dz	dr1	dr2	ra	dec	mean_y	mean_z
0	FID		ACIS-I-1	7.09	6026	-0.008	-0.027	0.013	0.026	0.000000	0.000000	923.80	-838.95
1	FID		ACIS-I-4	7.01	6026	0.153	0.046	0.011	0.025	0.000000	0.000000	2144.03	1060.90
2	FID		ACIS-I-5	7.07	6026	-0.244	0.052	0.008	0.014	0.000000	0.000000	-1824.32	1058.80
3	GUIDE	used	31075128	9.33	12044	0.064	-0.231	0.108	0.175	149.584516	2.364347	-1545.84	2178.75
4	GUIDE	used	31475336	7.01	12052	-0.374	-0.400	0.091	0.148	149.929497	3.384805	2330.18	2269.40
5	GUIDE	used	31983336	8.60	12014	0.471	0.226	0.084	0.135	150.429924	2.291234	-752.71	-768.30
6	GUIDE	used	32374896	9.21	11974	-0.170	0.227	0.115	0.183	150.682269	2.512794	306.27	-1348.45
7	GUIDE	used	31986152	9.01	12046	0.011	0.175	0.120	0.194	150.840314	2.057585	-1038.54	-2443.27

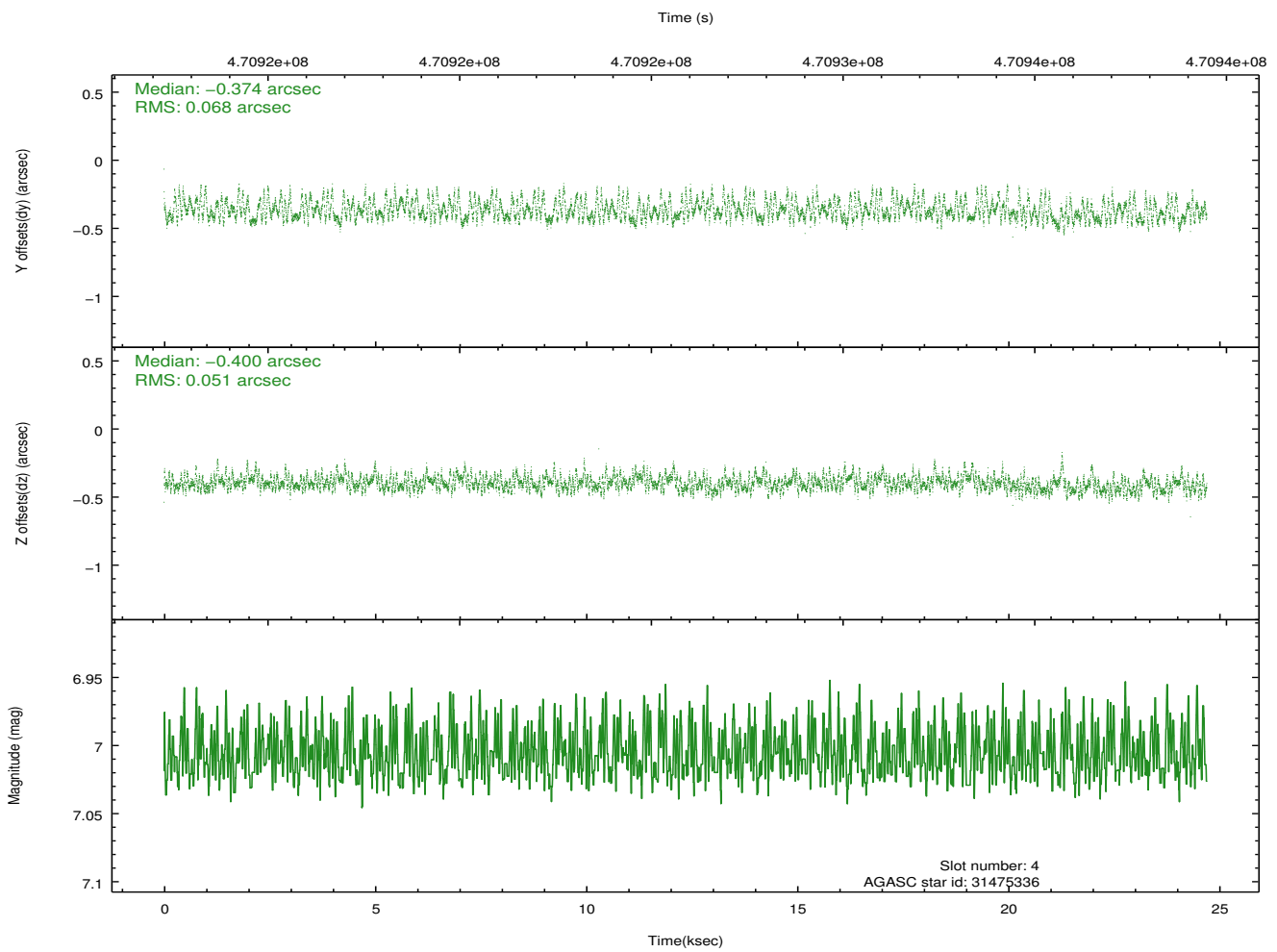
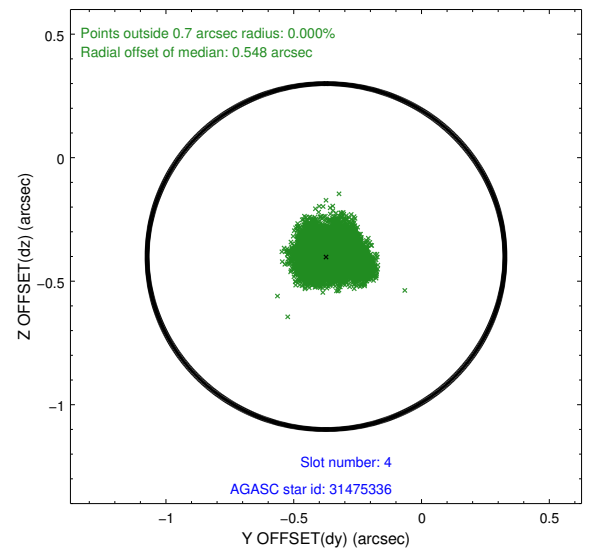
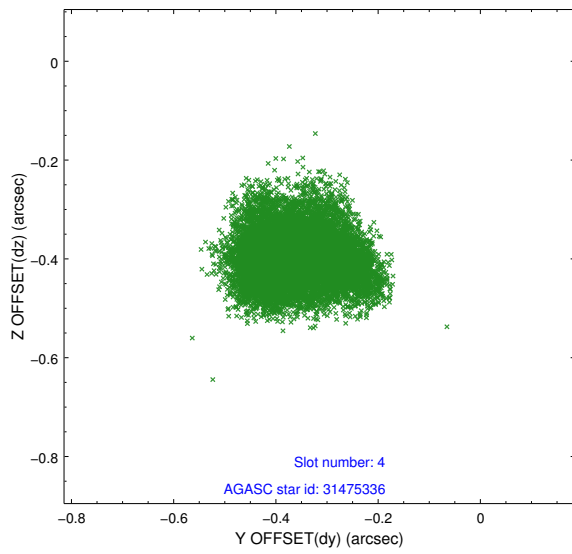
∞

2.4 Star Slots

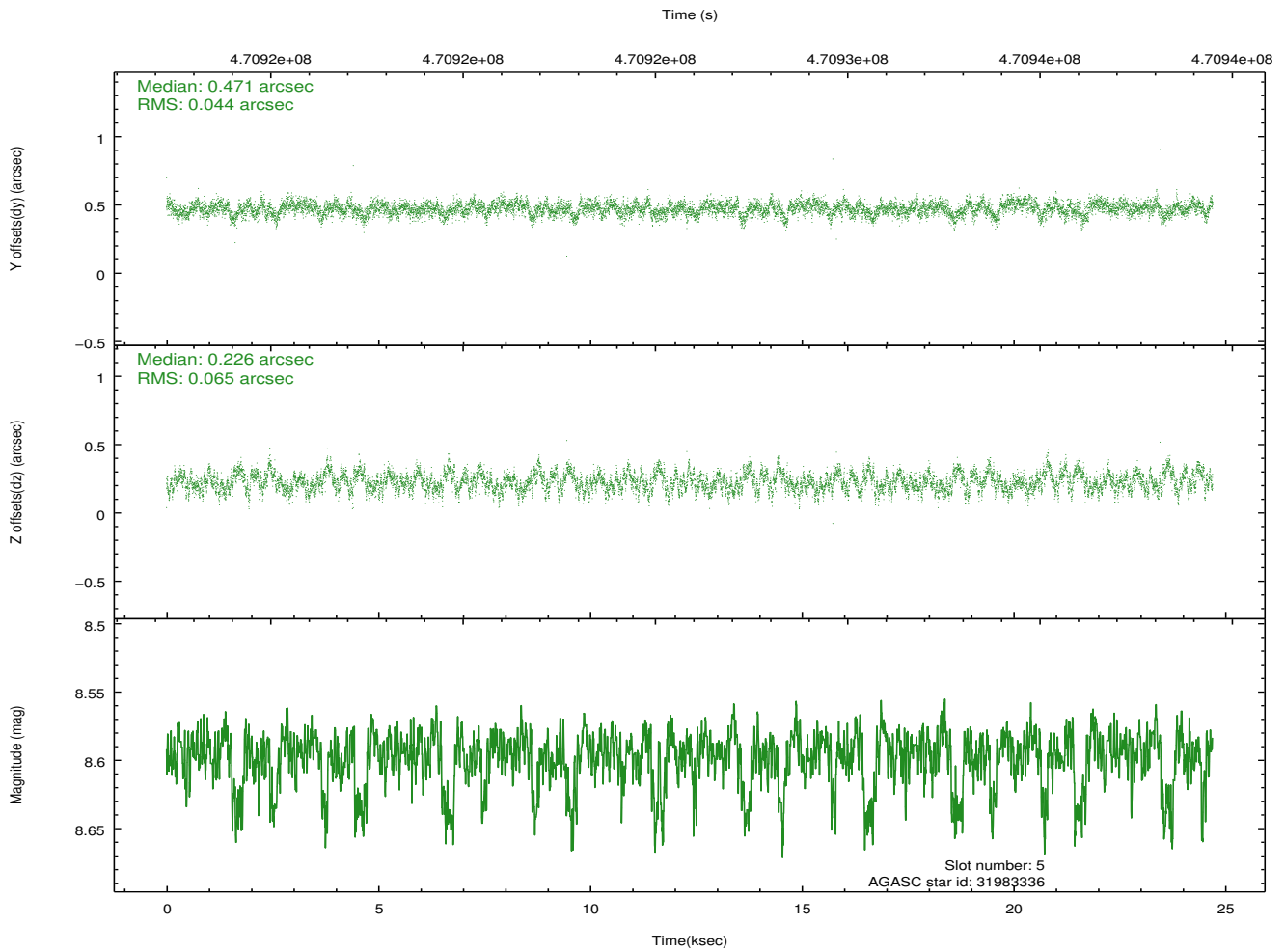
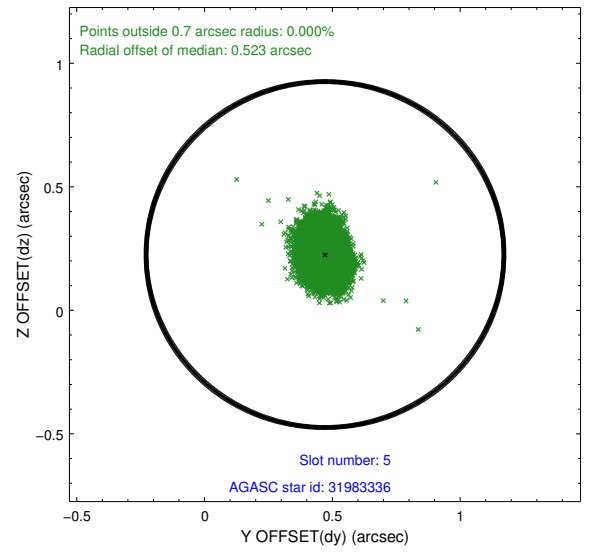
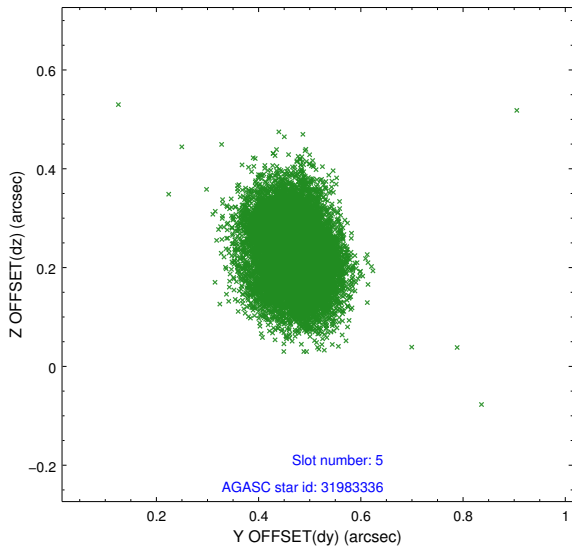
2.4.1 Slot 3



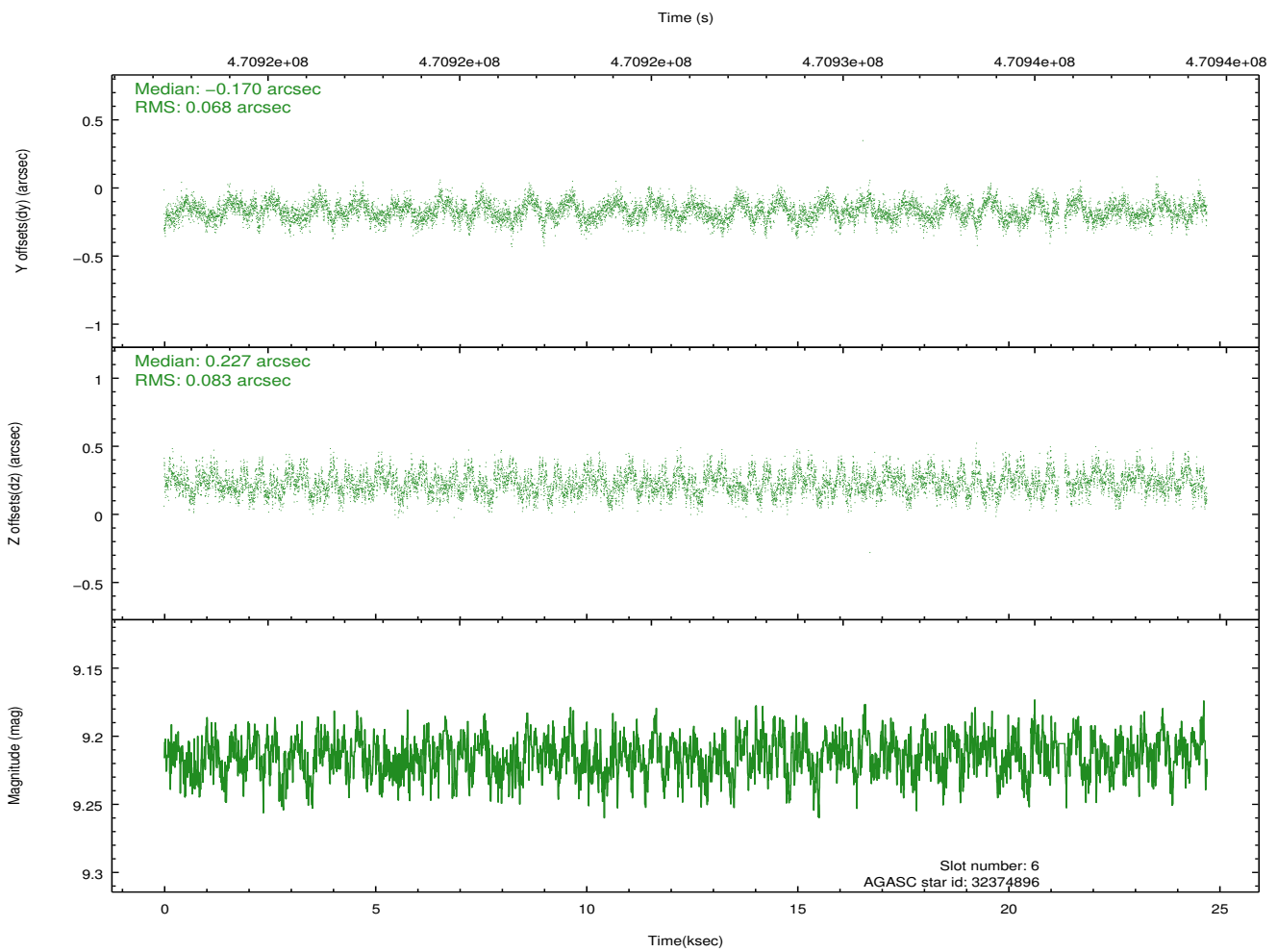
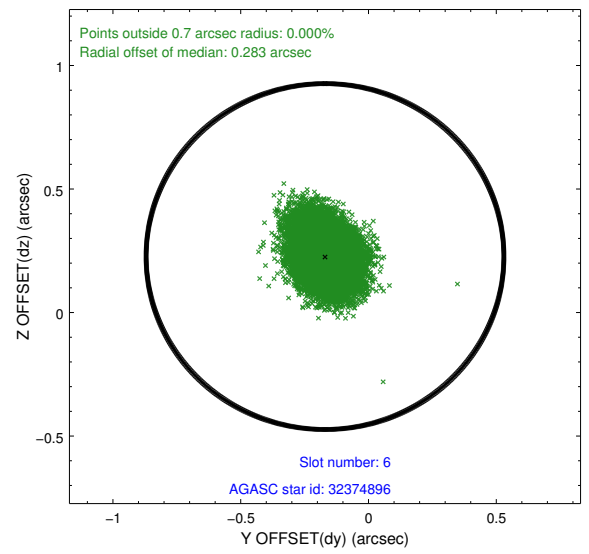
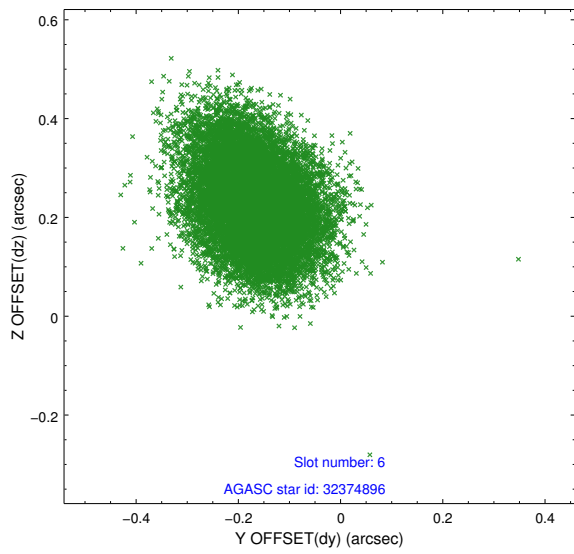
2.4.2 Slot 4



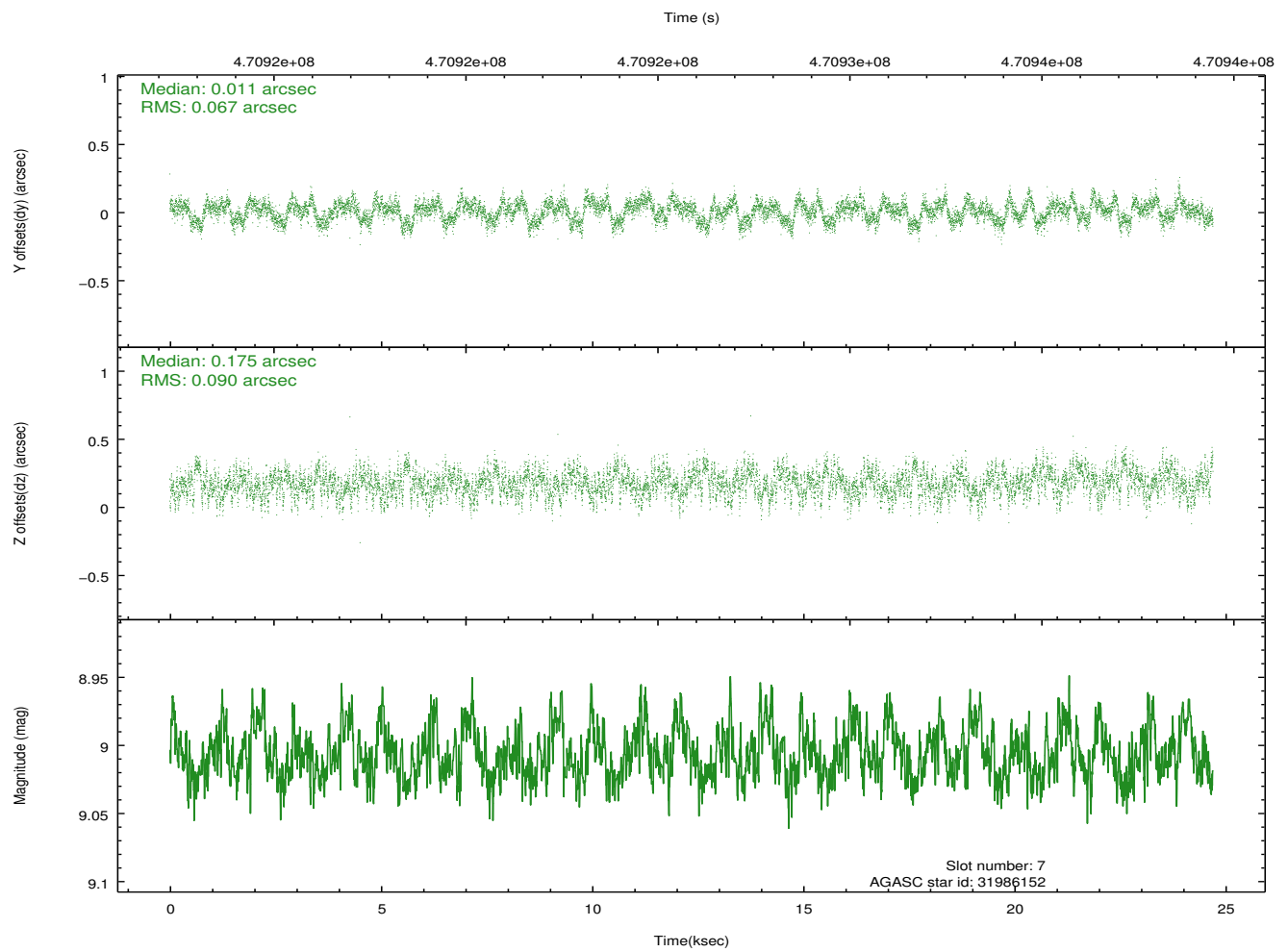
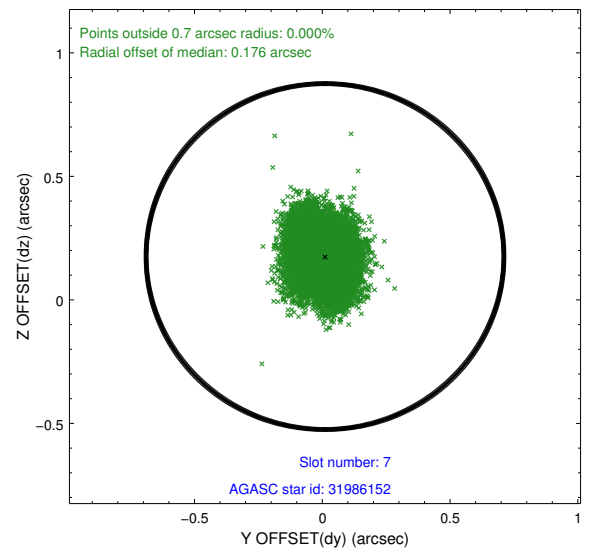
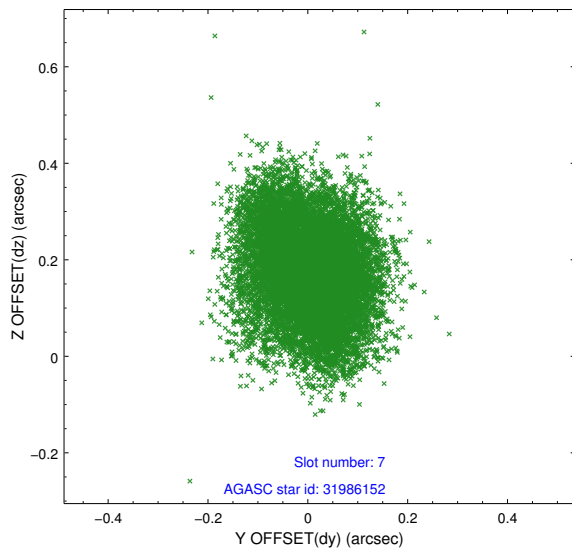
2.4.3 Slot 5



2.4.4 Slot 6

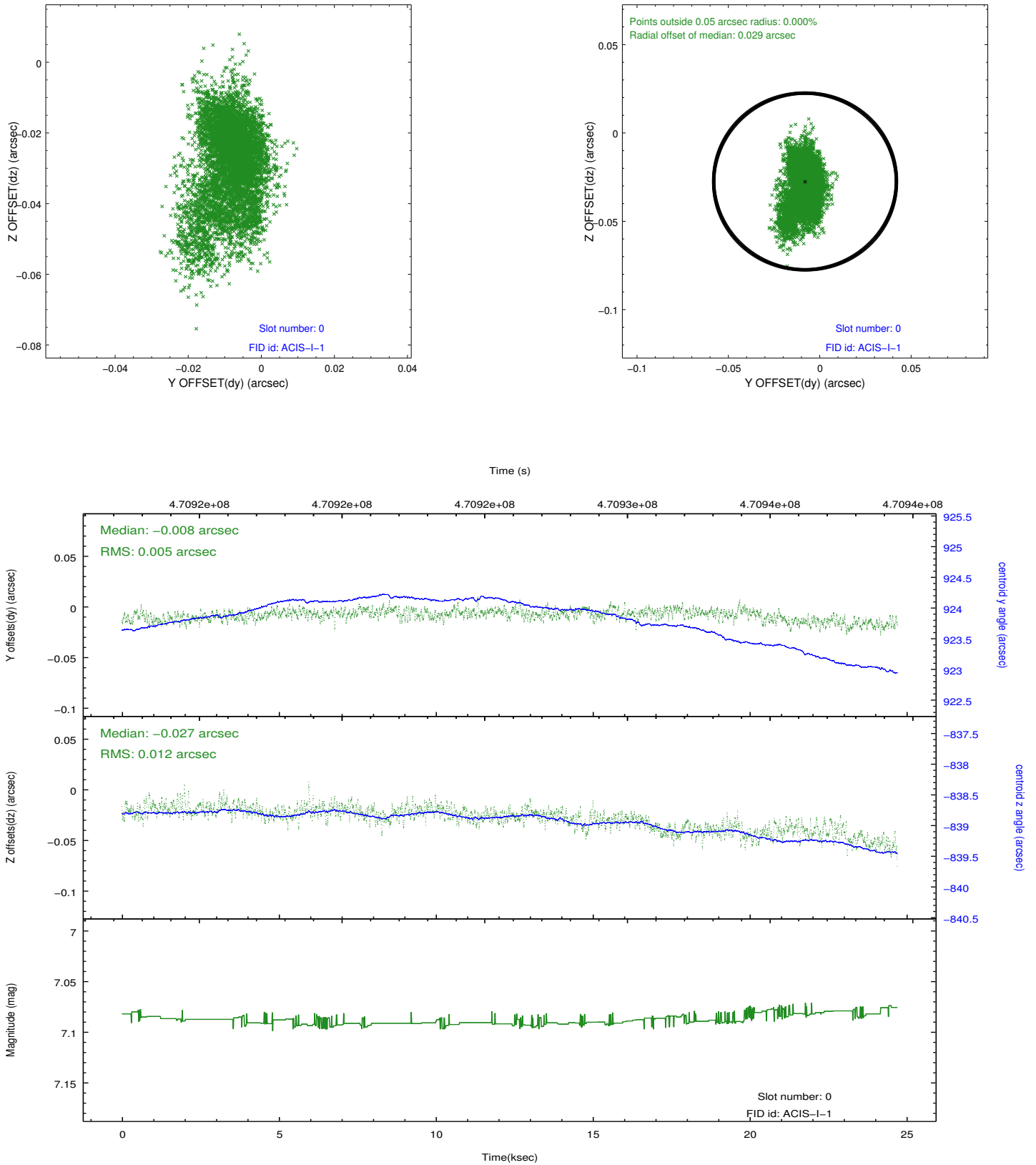


2.4.5 Slot 7

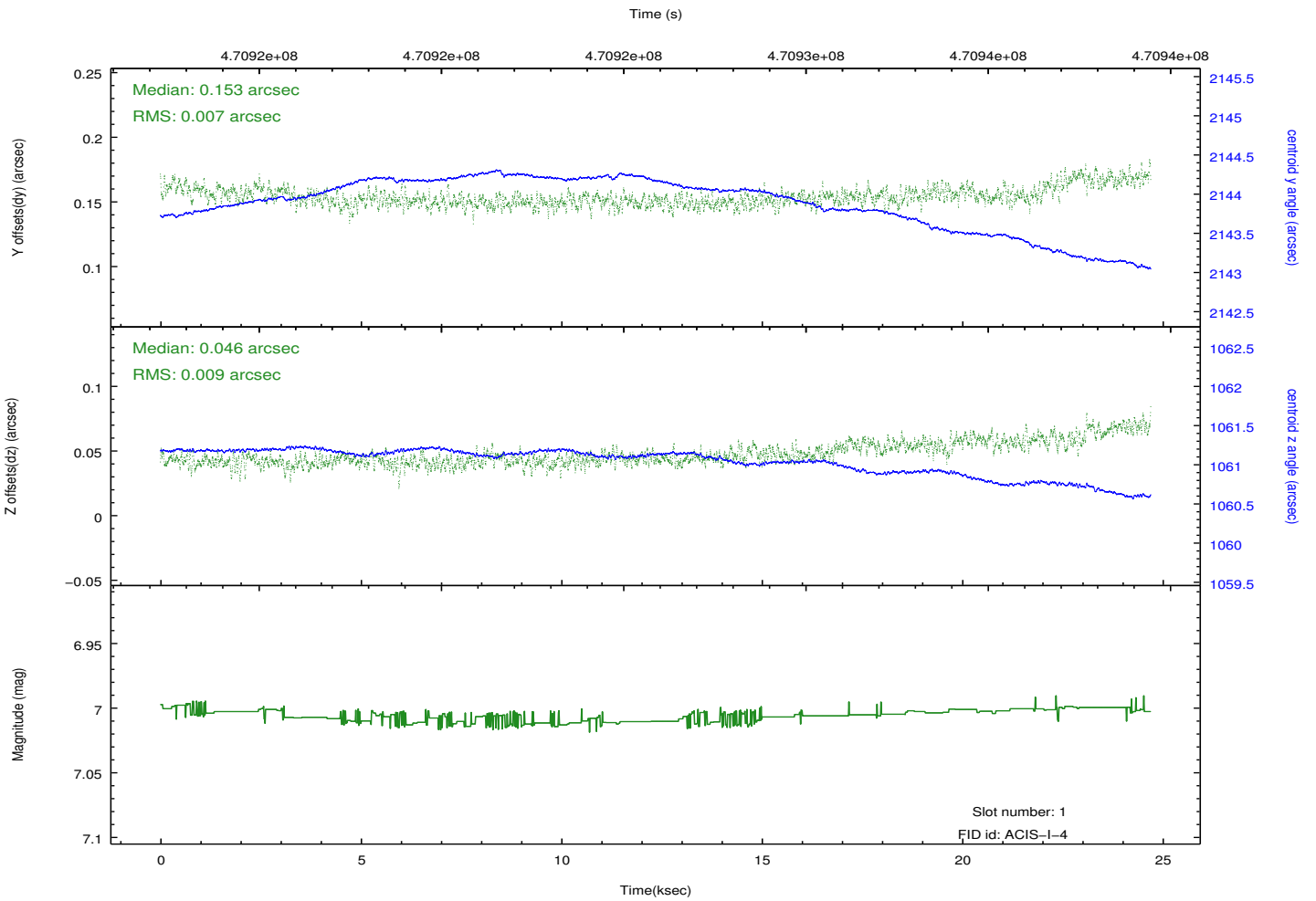
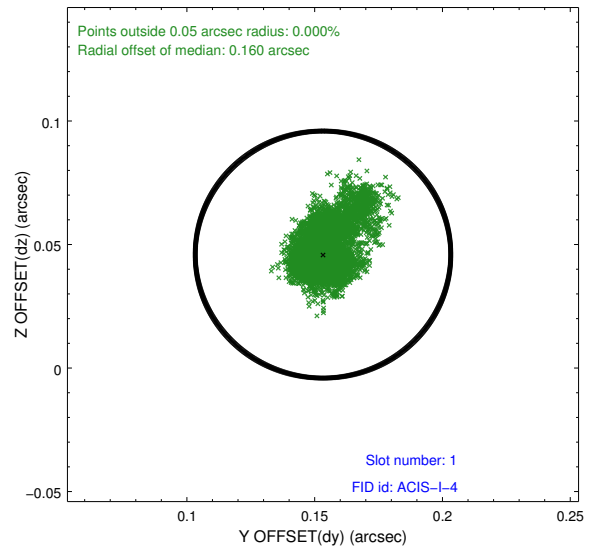
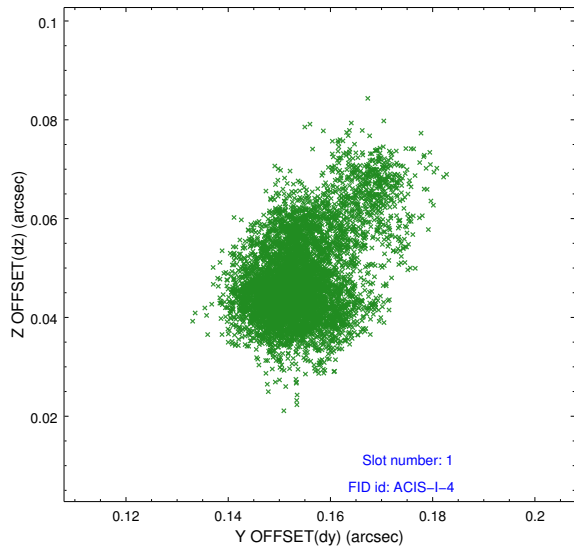


2.5 FID Slots

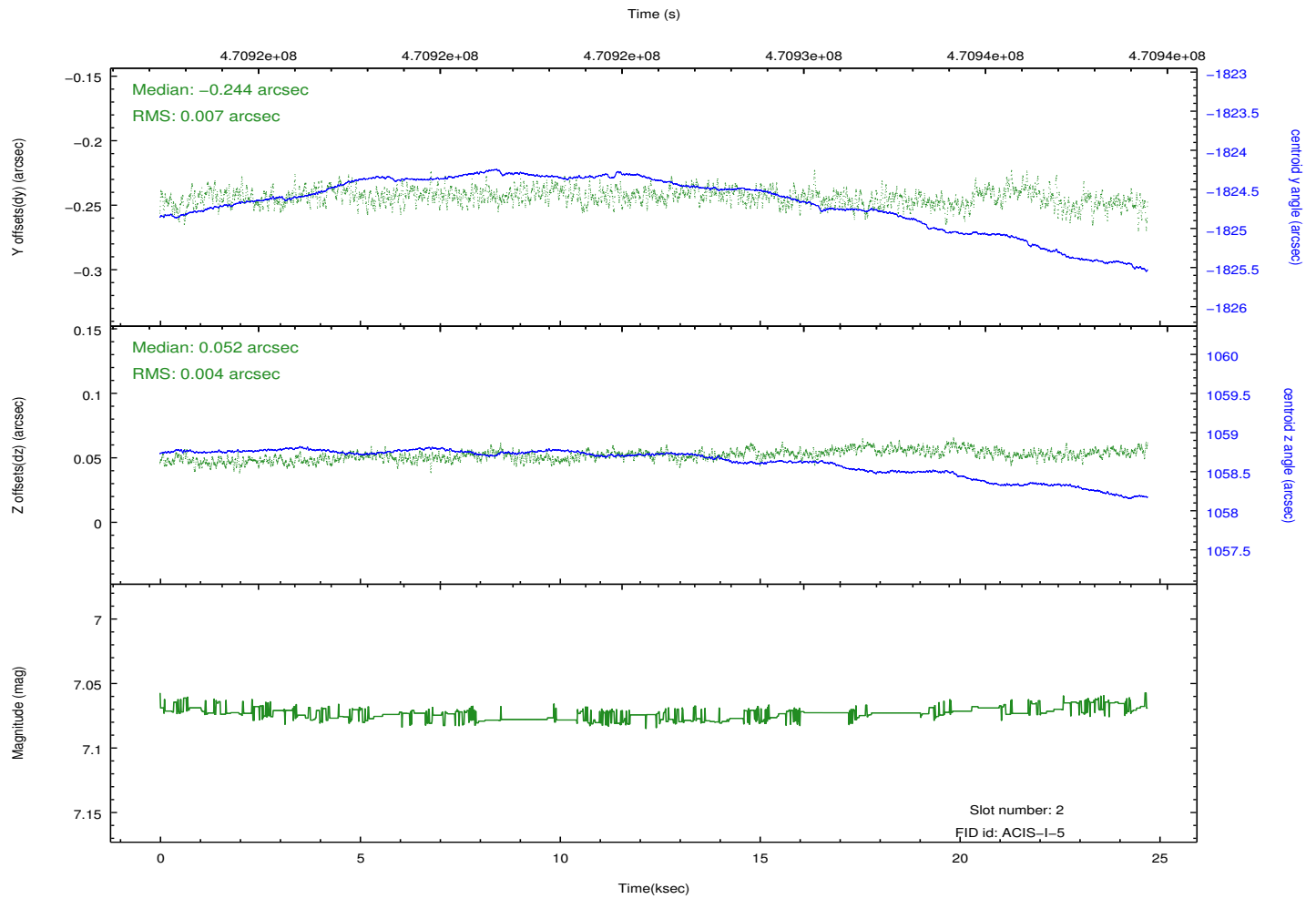
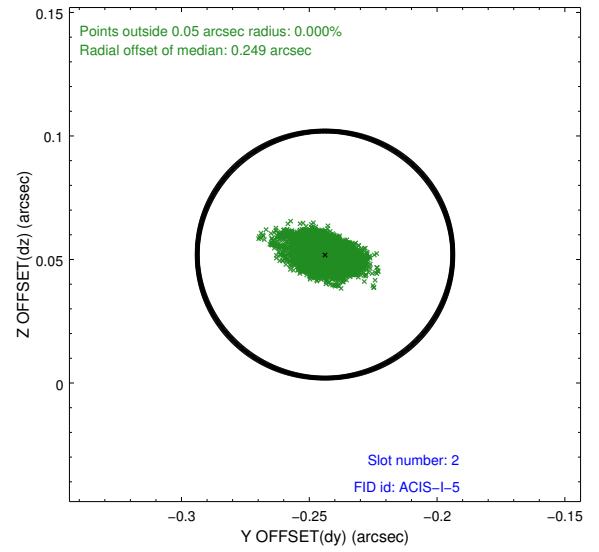
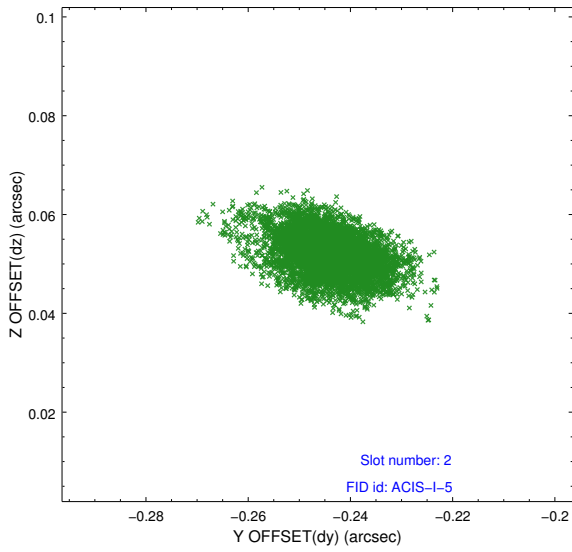
2.5.1 Slot 0



2.5.2 Slot 1



2.5.3 Slot 2



A Summary

A.1 Status

V&V Scientist	Beth Sundheim
V&V Date (YYYY-MM-DD)	2014.12.03
V&V Edition	1
V&V Disposition and Status	OK
V&V Charge Time	24.090100185275

A.2 Comments

Roll preference met.

These data have been reprocessed with new aspect alignment calibration files that correct small mean offsets (up to 0.4 arcsecs) and improve overall astrometric accuracy. The new calibration was determined using data from the time period being reprocessed and was performed using cross-correlation of X-ray sources with radio and optical counterparts.