

V&V Reference Report

L2 ASCDS Version : 8.4.5

Observation 15379 - L2 Version 2
Chandra X-Ray Center

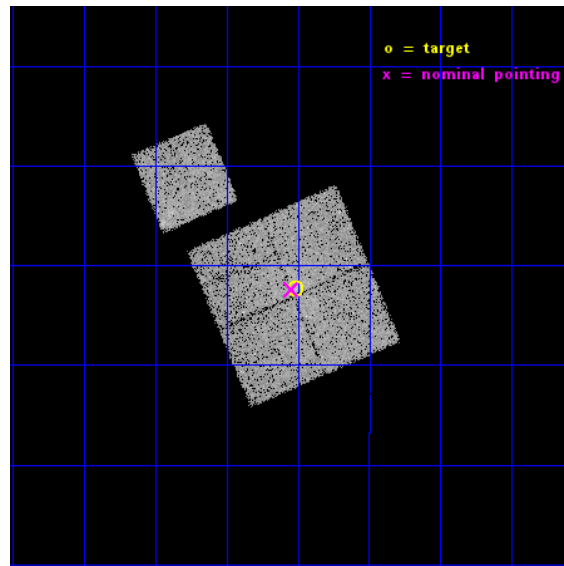
L2 Processing Date : Nov 29 2014

Contents

1	Front	2
2	OBI	3
2.1	OBI	3
2.1.1	Images	3
2.1.2	Bias	3
2.1.3	Parameters	4
2.1.4	Events	4
2.2	Compared Parameters	5
2.3	Aspect	6
2.4	Star Slots	9
2.4.1	Slot 3	9
2.4.2	Slot 4	10
2.4.3	Slot 5	11
2.4.4	Slot 6	12
2.4.5	Slot 7	13
2.5	FID Slots	14
2.5.1	Slot 0	14
2.5.2	Slot 1	15
2.5.3	Slot 2	16
A	Summary	17
A.1	Status	17
A.2	Comments	17

1 Front

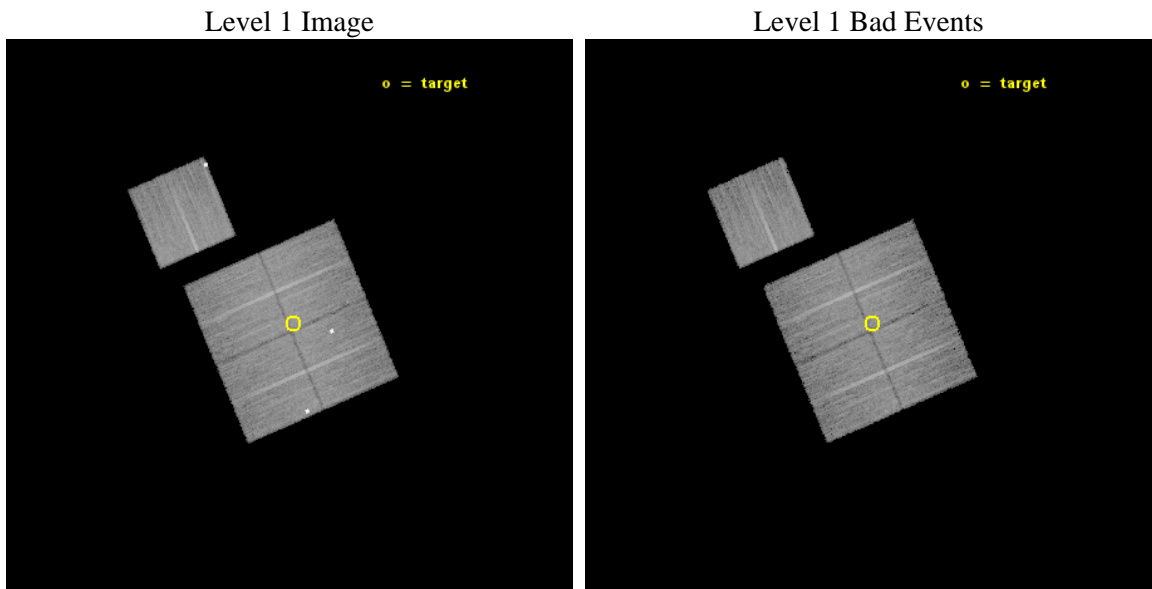
seq_num	801369	Sequence number
obs_id	15379	Observation id
title	Extending a Large Sample of Fossil Groups with Chandra	Proposal ti
observer	Professor Gordon Garmire	Principal investigator
object	SDSS J034500.76-060221.8	Source name
dtycycle	0	
cycle	P	events from which exps? Prim/Second/Both
ra_targ	56.253333	Observer's specified target RA [deg]
dec_targ	-6.039389	Observer's specified target Dec [deg]
ra_nom	56.261394717964	Nominal RA [deg]
dec_nom	-6.0402068051909	Nominal Dec [deg]
roll_nom	336.90944416265	Nominal Roll [deg]
revision	2	Processing version of data
ontime	20081.288792014	Sum of GTIs [s]
livetime	19818.911970317	Livetime [s]
ontime0	20078.024581313	Sum of GTIs [s]
ontime1	20071.783460259	Sum of GTIs [s]
ontime2	20081.247752011	Sum of GTIs [s]
ontime3	20081.288792014	Sum of GTIs [s]
ontime6	20081.124632001	Sum of GTIs [s]
l2events	52577	Number of level 2 events



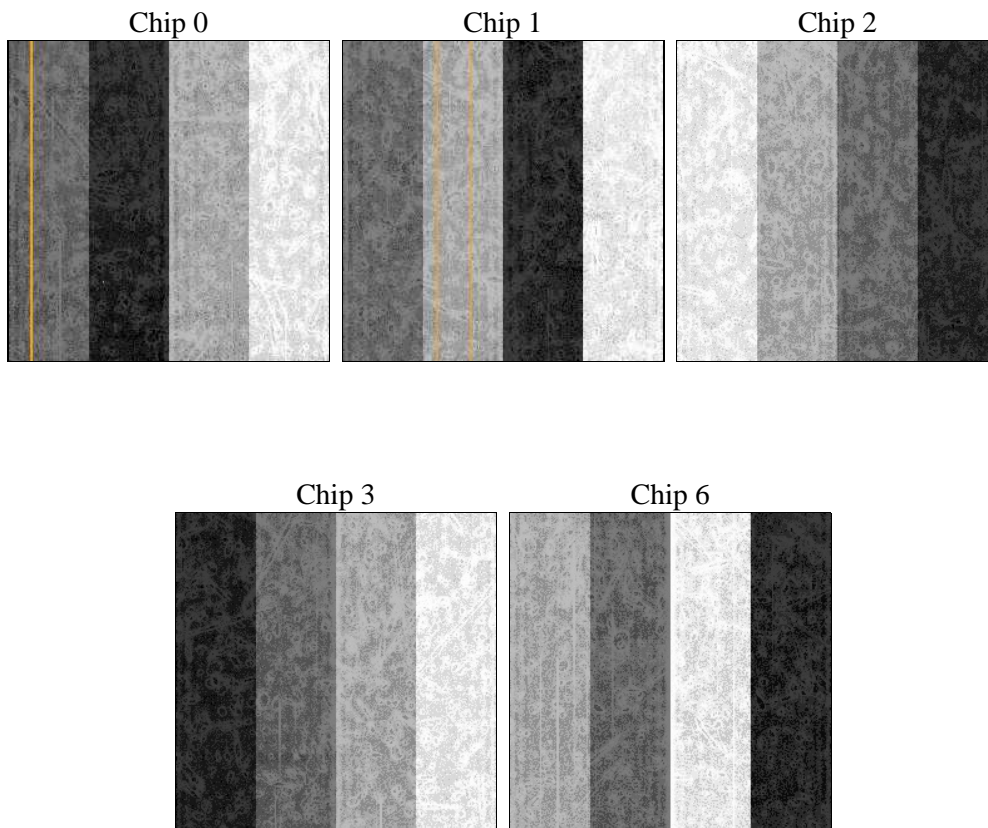
2 OBI

2.1 OBI

2.1.1 Images



2.1.2 Bias



2.1.3 Parameters

obi_num	0	Obi number	sched_exp_time	20000.000000	[s] Scheduled observation exposure time
ascdsver	10.3	Processing system revision	ontime	20081.288792014	Sum of GTIs [s]
caldbver	4.6.4	 	ontime0	20078.024581313	Sum of GTIs [s]
date	2014-11-30T00:32:00	Date and time of file creation	ontime1	20071.783460259	Sum of GTIs [s]
revision	2	Processing version of data	ontime2	20081.247752011	Sum of GTIs [s]
			ontime3	20081.288792014	Sum of GTIs [s]
			ontime6	20081.124632001	Sum of GTIs [s]
			l1events	516994	Number of level 1 events

2.1.4 Events

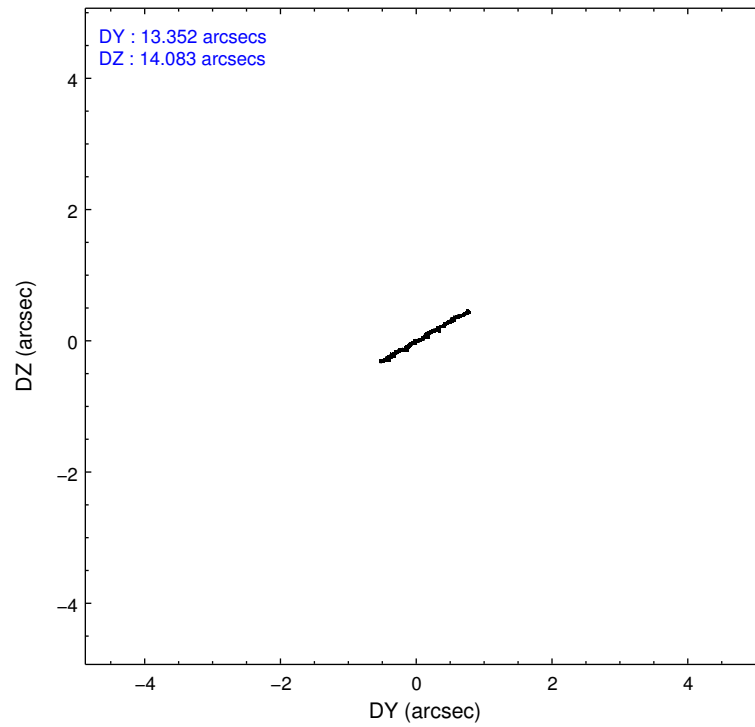
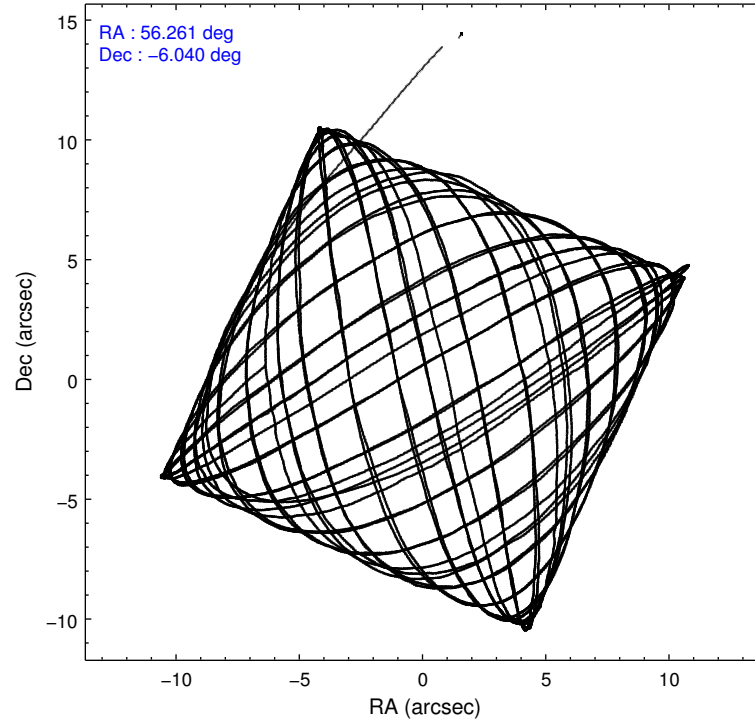
	ccd 0	ccd 1	ccd 2	ccd 3	ccd 6
level 1 events	103081	101791	101307	101494	109321
rejected events	84816	82581	89411	89547	90740
rejected %	82%	81%	88%	88%	83%

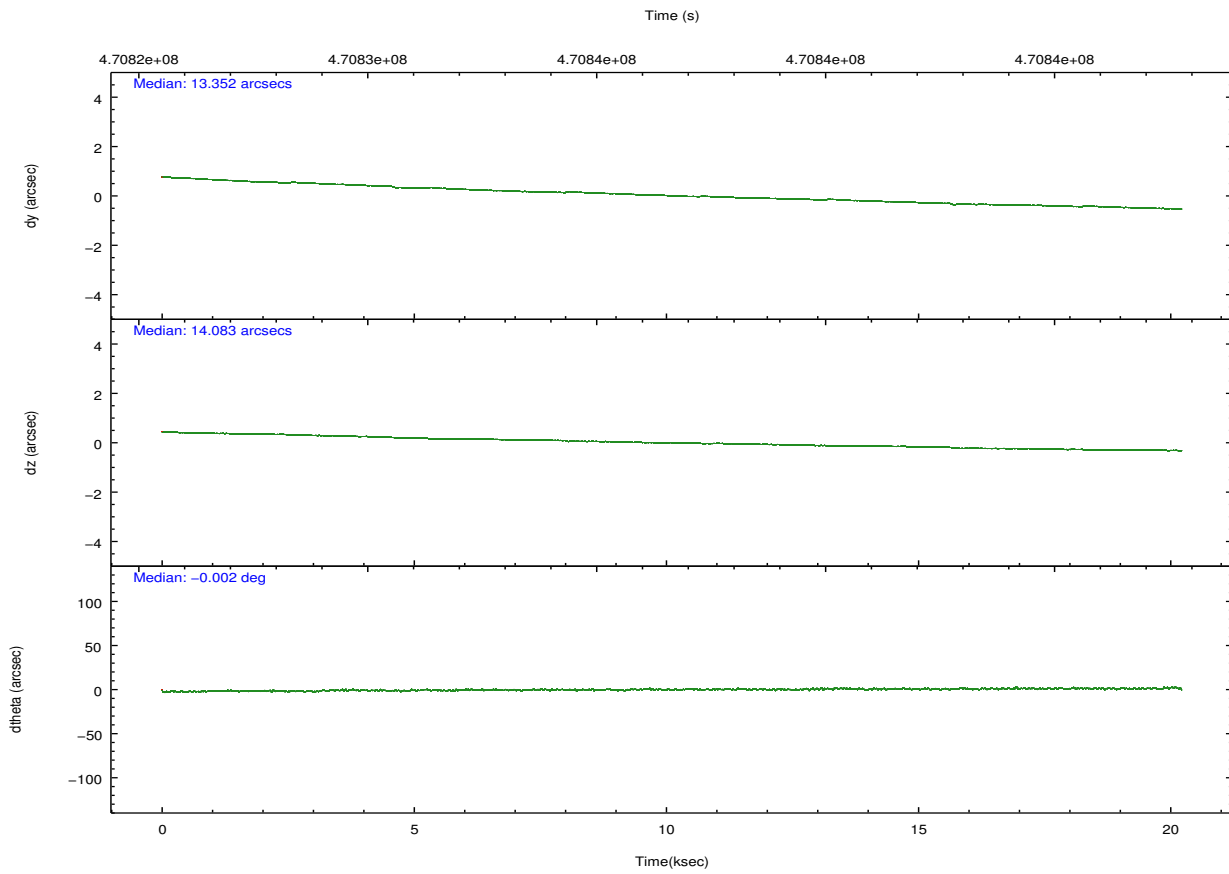
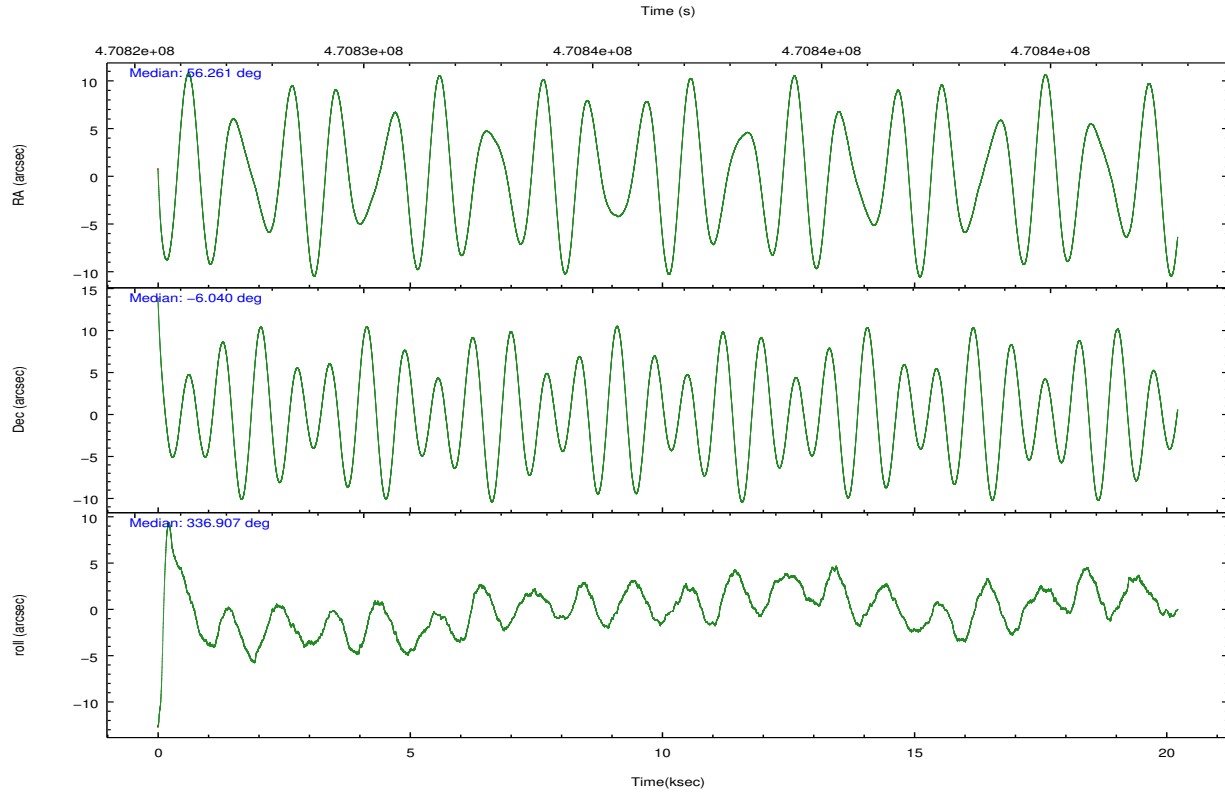
	ccd 0	ccd 1	ccd 2	ccd 3	ccd 6
grade 0 events	10332	10732	4581	4518	10466
	10%	10%	4%	4%	9%
grade 1 events	112	83	55	65	73
	0%	0%	0%	0%	0%
grade 2 events	2935	2979	2722	2511	2750
	2%	2%	2%	2%	2%
grade 3 events	1263	1268	1167	1188	1228
	1%	1%	1%	1%	1%
grade 4 events	1211	1257	1137	1254	1204
	1%	1%	1%	1%	1%
grade 5 events	4803	4866	4503	5394	5219
	4%	4%	4%	5%	4%
grade 6 events	2534	2979	2290	2483	2943
	2%	2%	2%	2%	2%
grade 7 events	79891	77627	84852	84081	85438
	77%	76%	83%	82%	78%

2.2 Compared Parameters

Parameter	Planned	Actual	Parameter	Planned	Actual
Instrument	ACIS	ACIS	Obspar format version number	7	7
Detector	ACIS-01236	ACIS-01236	Obspar file type	PREDICTED	ACTUAL
Grating	NONE	NONE	Obspar update status	NONE	UPDATED
Data mode	VFAINT	VFAINT	CCD I0 on	Y	Y
Observation mode	POINTING	POINTING	CCD I1 on	Y	Y
[deg] Pointing RA	56.233983	56.26139471796388	CCD I2 on	Y	Y
[deg] Pointing Dec	-6.043623	-6.040206805190853	CCD I3 on	Y	Y
[deg] Pointing Roll	336.697876	336.9094441626539	CCD S0 on	N	N
[mm] SIM focus pos	-0.782348	-0.7809083437167272	CCD S1 on	N	N
[mm] SIM defocus	0	0.001439871863259334	CCD S2 on	O1	Y
[mm] SIM translation stage pos	-233.592463	-233.5874344608287	CCD S3 on	N	N
[mm] SIM translation stage offset	0	-0.005018542100998502	CCD S4 on	N	N
[s] Observation start time (MET)	470826745.184000	470825789.44092	CCD S5 on	N	N
Observation start date	2012-12-02T09:11:18	2012-12-02T08:56:29	Number of optional ACIS chips dropped	0	0
[s] Observation end time (MET)	470846745.184000	470847534.81709	On-chip summing requested	N	N
Observation end date	2012-12-02T14:44:38	2012-12-02T14:58:54	Subarray requested	NONE	NONE
Read mode	TIMED	TIMED	Alternating exposures requested	N	N
			[s] Primary exposure time	0.000000	3.1

2.3 Aspect





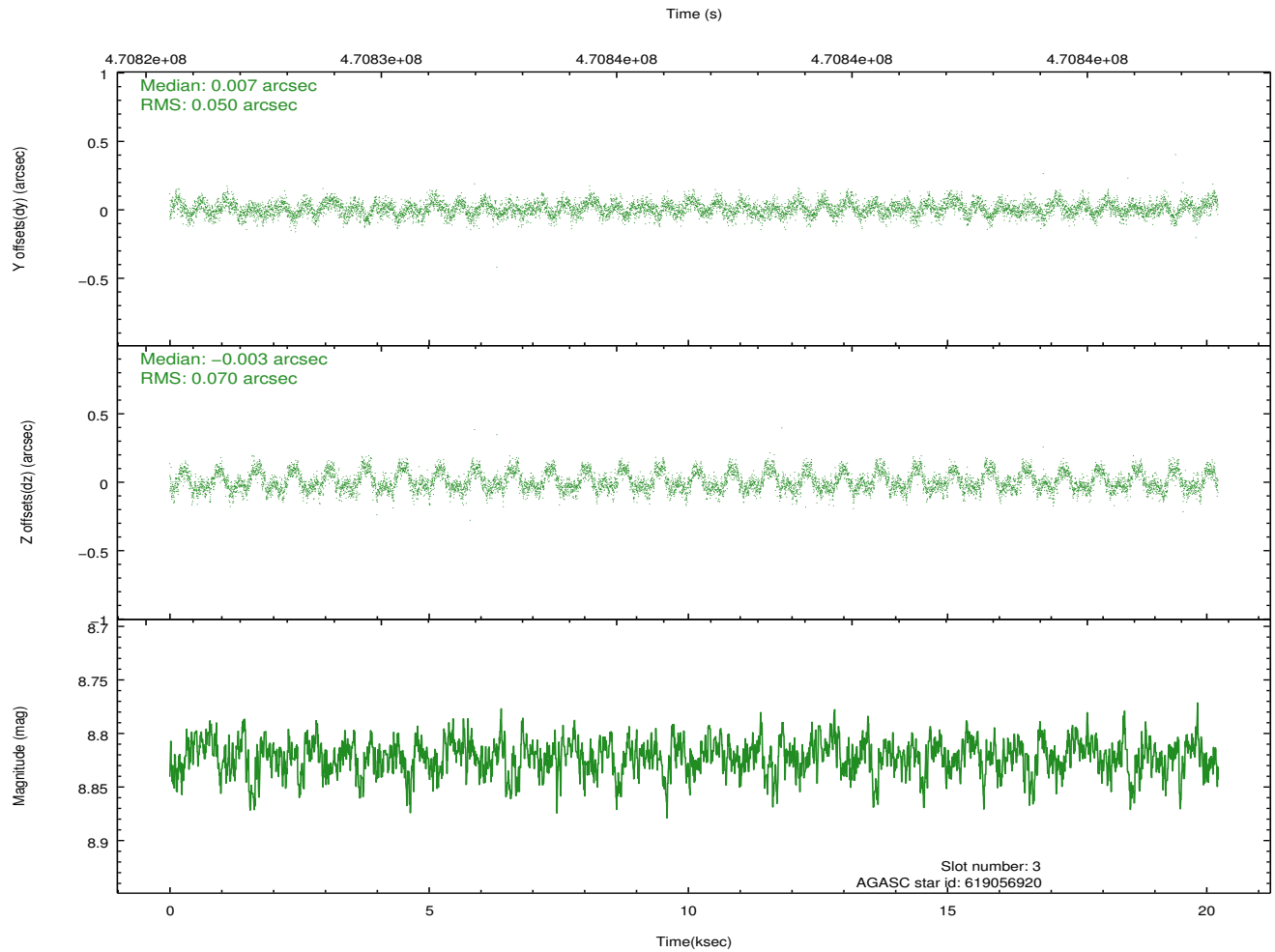
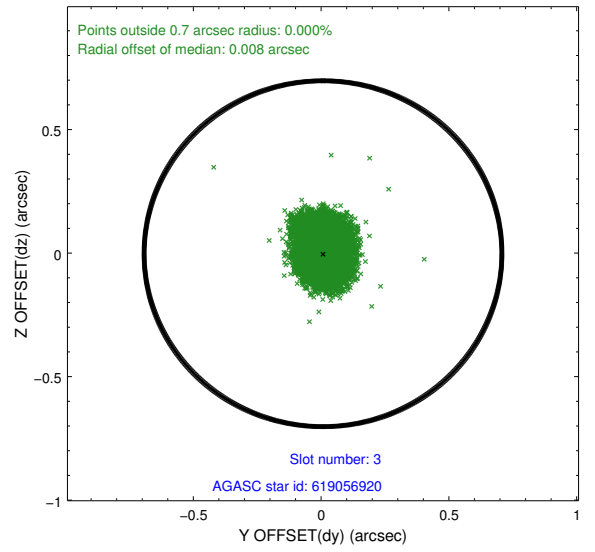
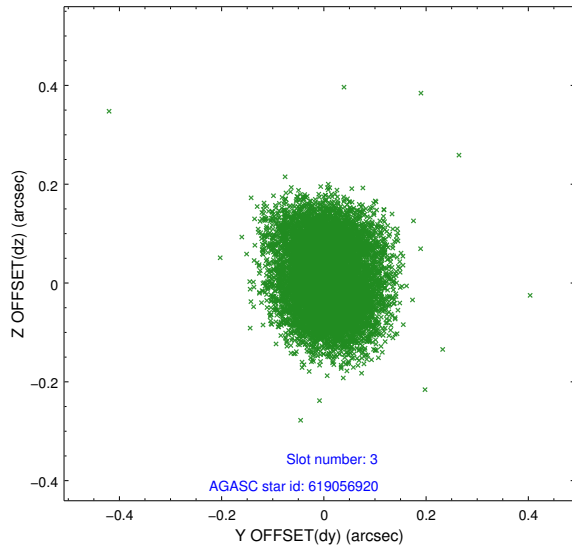
Slot Statistics

slot	status	used	id	mag	n_pts	med_dy	med_dz	dr1	dr2	ra	dec	mean_y	mean_z
0	FID		ACIS-I-1	7.21	4933	-0.017	0.032	0.011	0.019	0.000000	0.000000	926.10	-837.64
1	FID		ACIS-I-4	7.12	4933	0.197	0.009	0.011	0.018	0.000000	0.000000	2146.45	1062.06
2	FID		ACIS-I-5	7.20	4933	-0.278	0.029	0.011	0.019	0.000000	0.000000	-1821.93	1060.13
3	GUIDE	used	619056920	8.82	9863	0.007	-0.003	0.092	0.146	56.048637	-5.906421	-804.50	191.31
4	GUIDE	used	619059984	9.15	9859	0.091	-0.010	0.100	0.157	56.476357	-6.478904	1416.45	-1095.99
5	GUIDE	used	619063072	9.19	9854	0.060	-0.219	0.083	0.132	55.922608	-5.844504	-1306.57	216.76
6	GUIDE	used	619063128	8.60	9864	-0.078	0.148	0.079	0.128	55.490204	-6.418608	-1908.82	-2293.96
7	GUIDE	used	619063480	8.90	9834	-0.082	0.075	0.080	0.129	56.491185	-5.964127	732.79	627.16

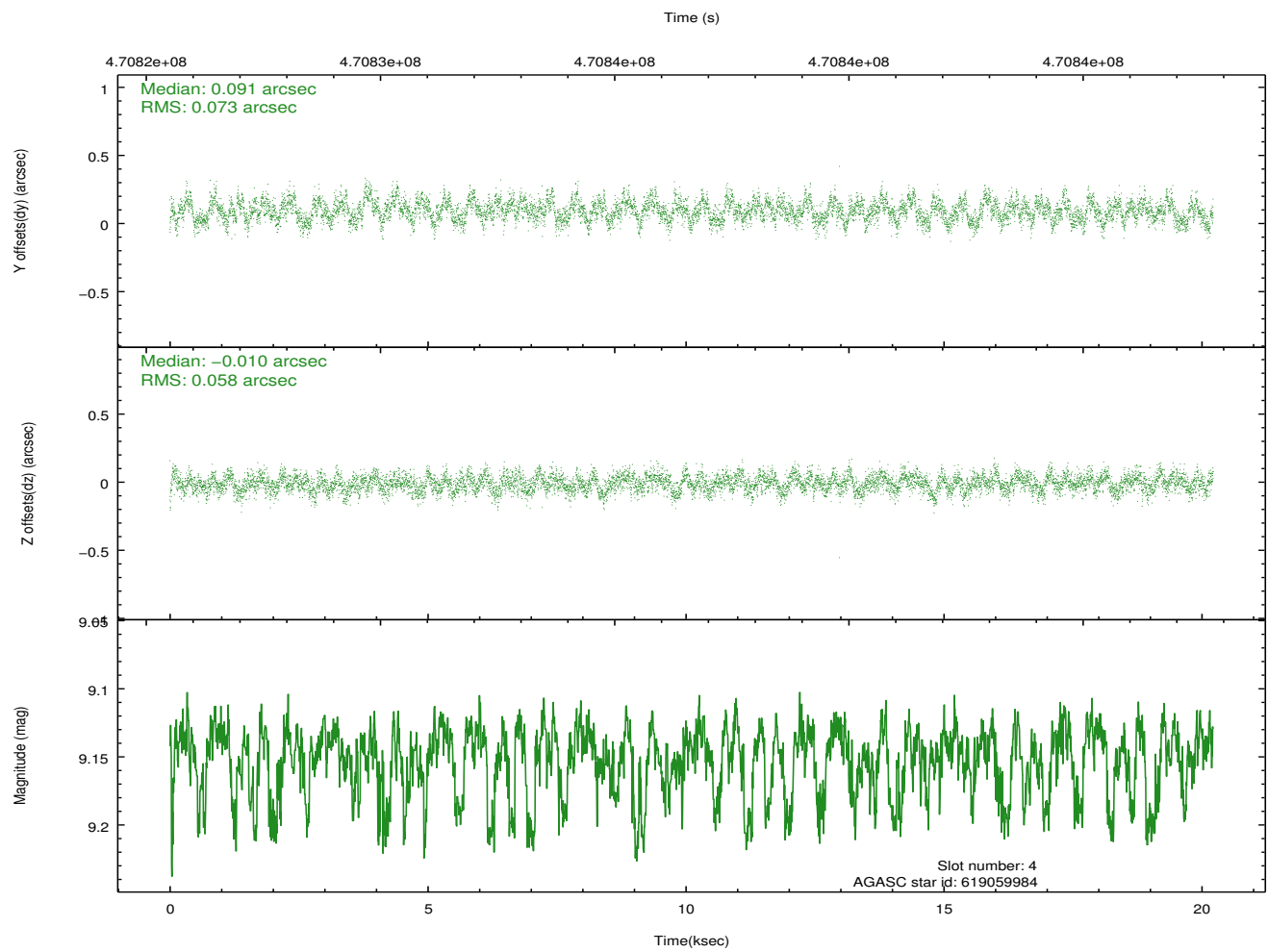
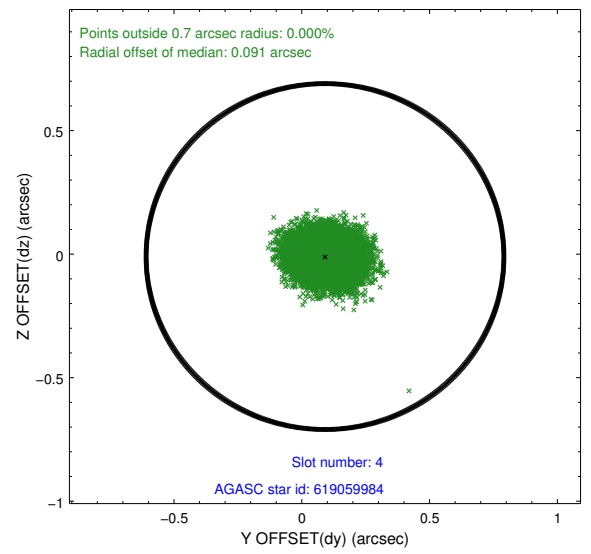
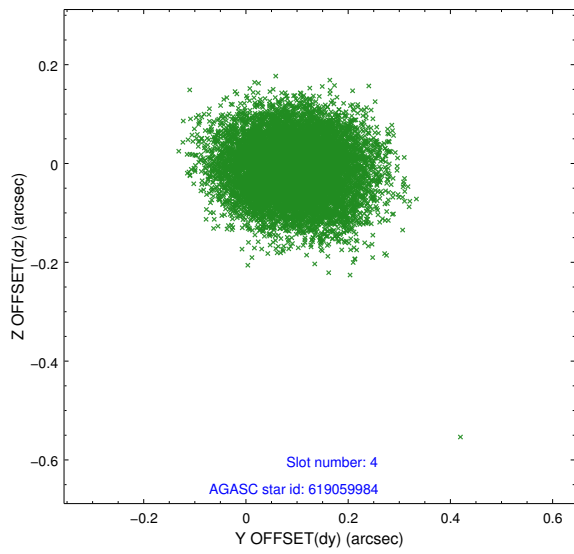
∞

2.4 Star Slots

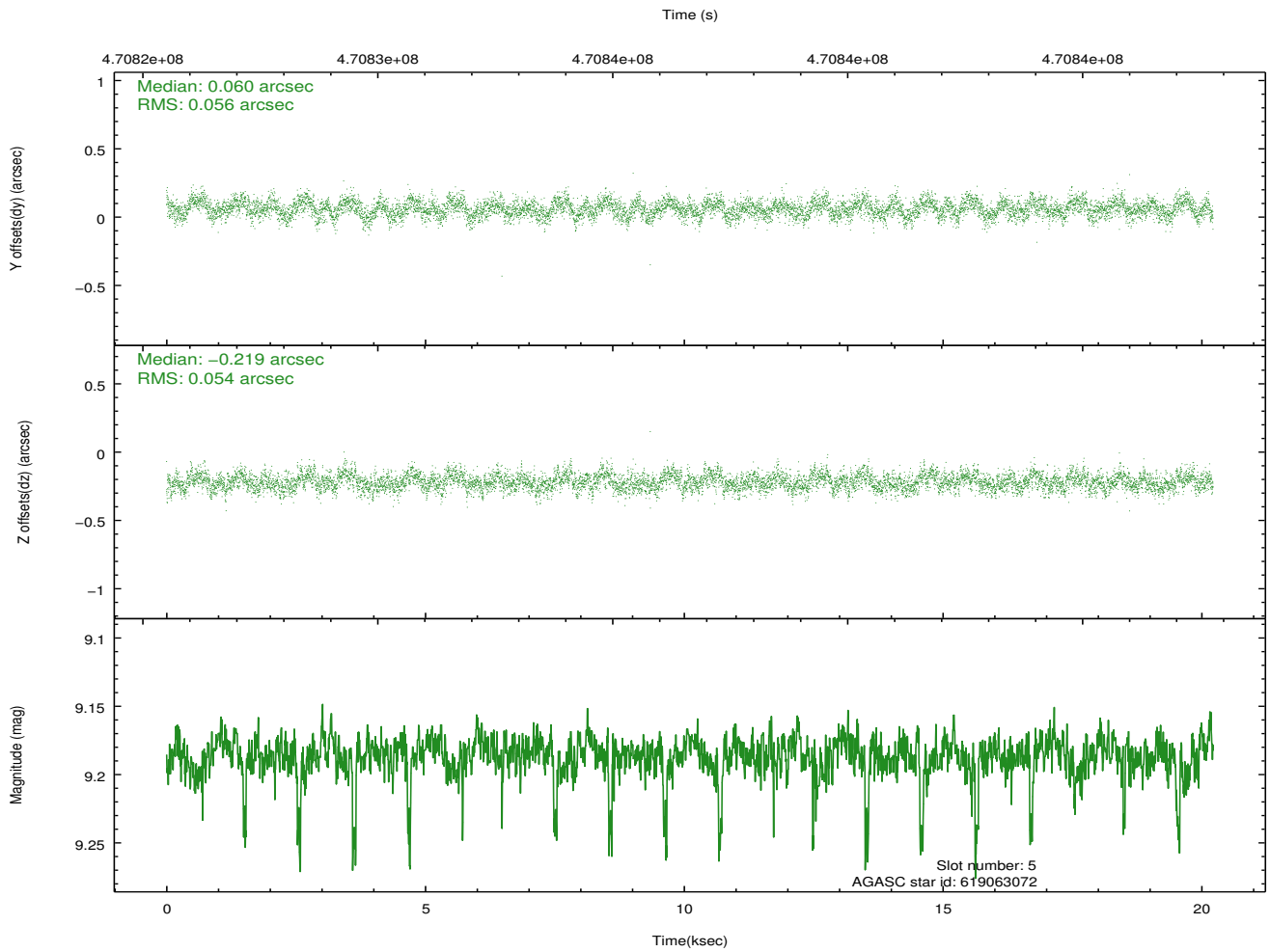
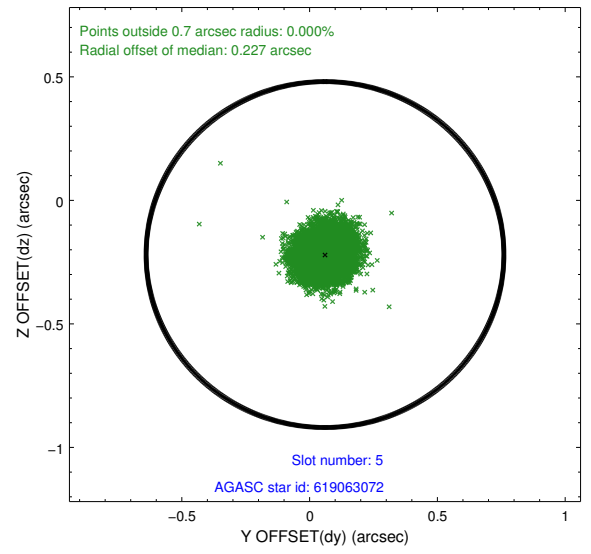
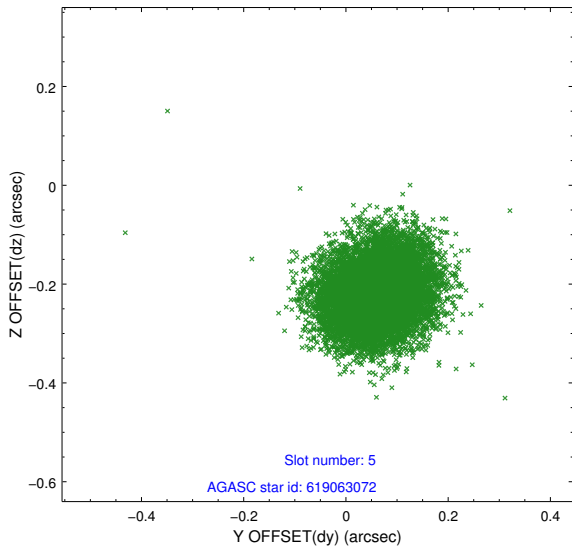
2.4.1 Slot 3



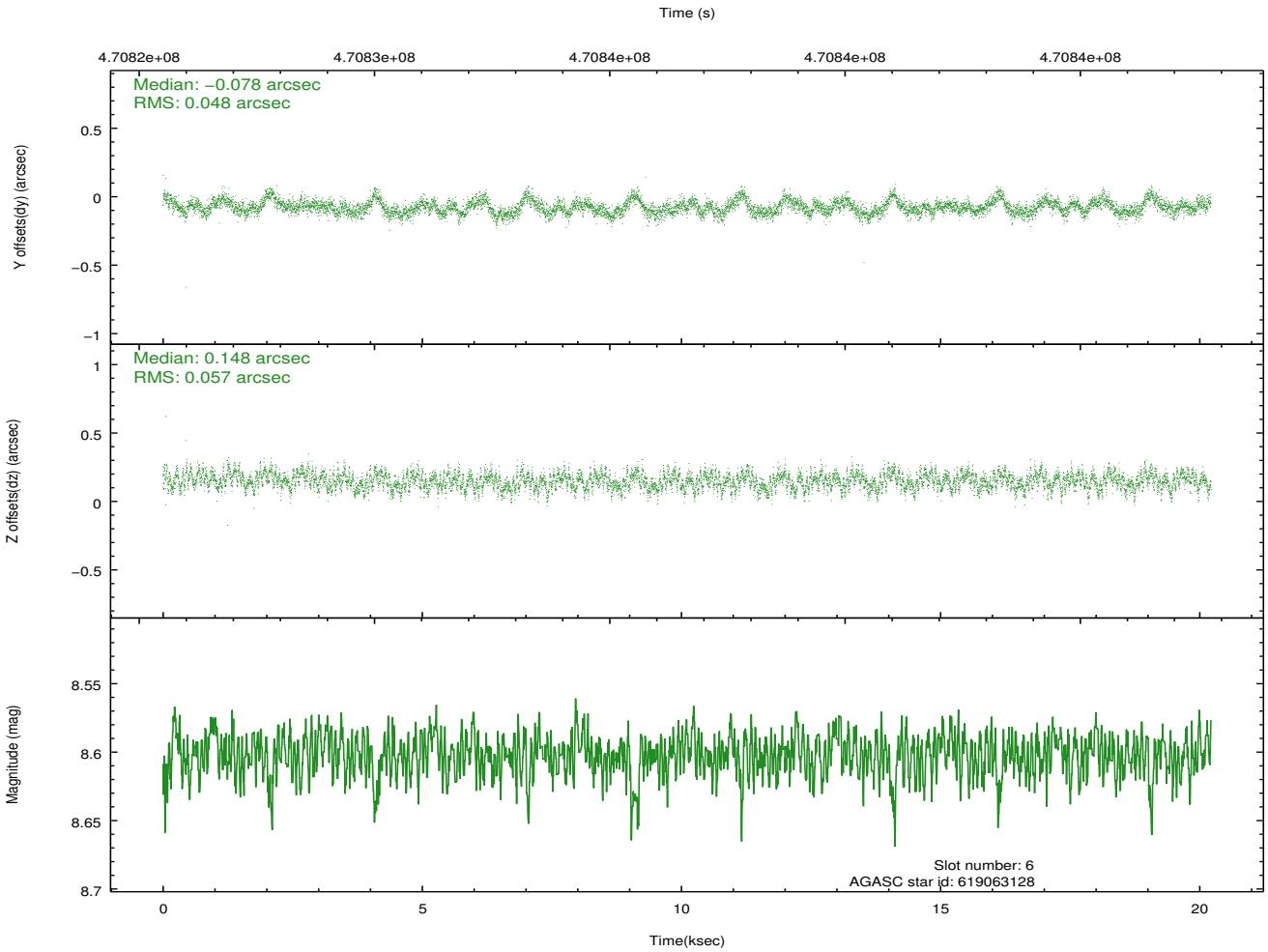
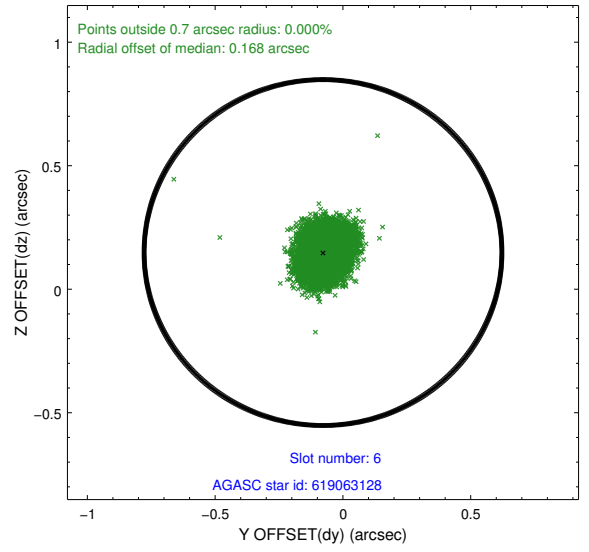
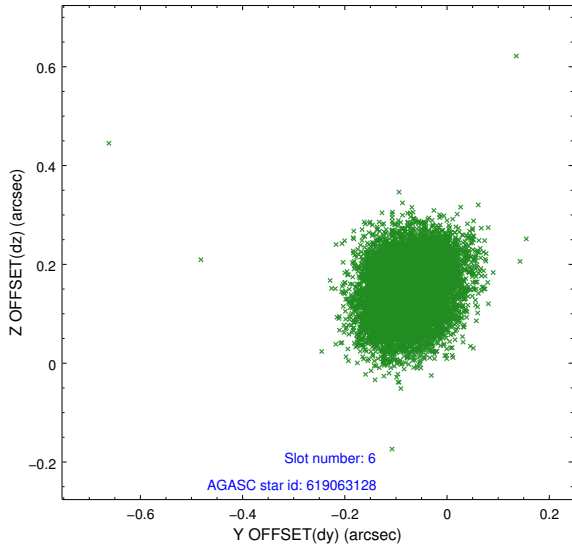
2.4.2 Slot 4



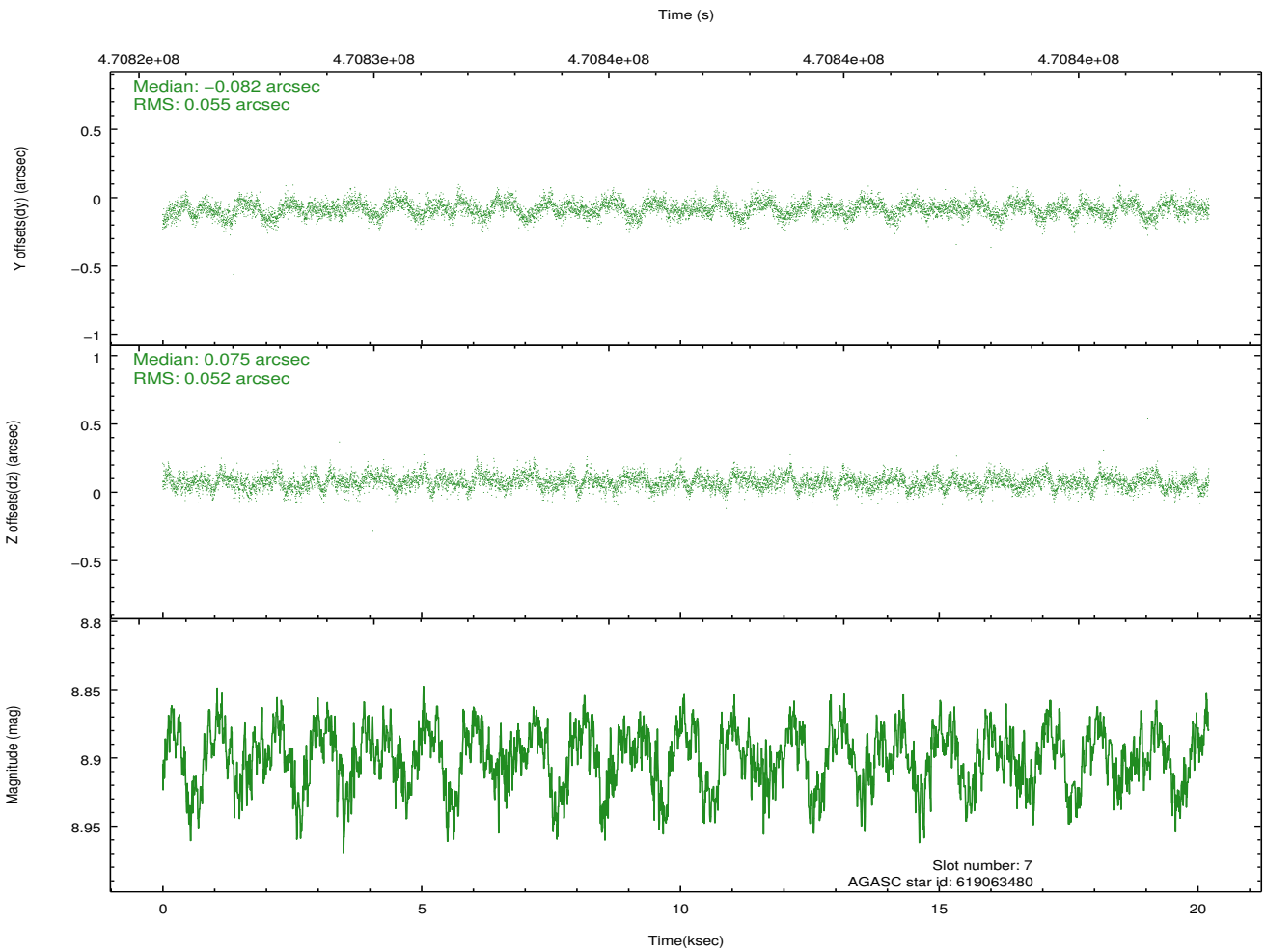
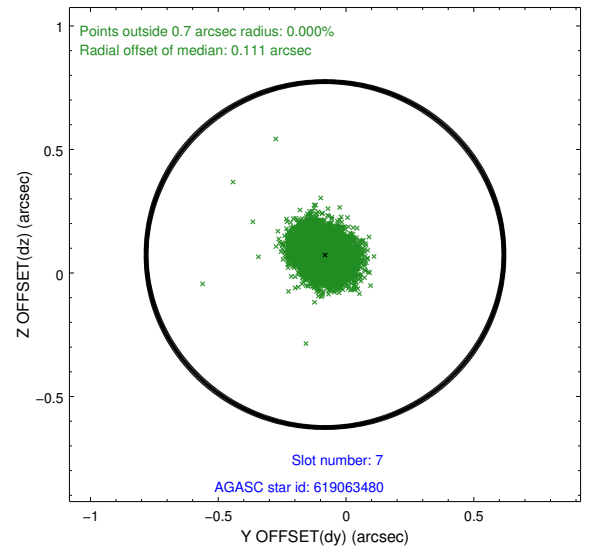
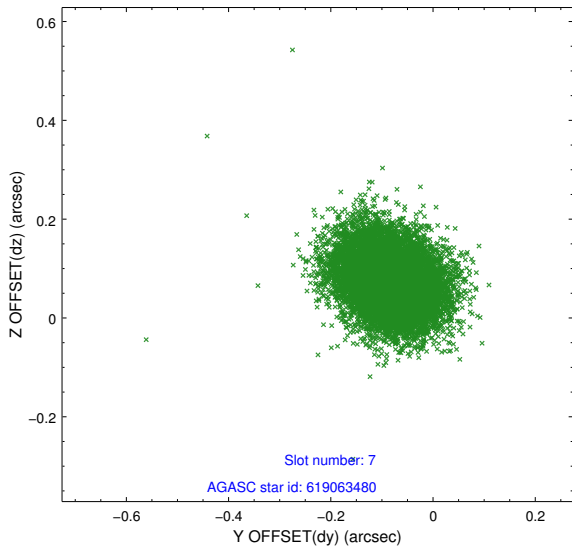
2.4.3 Slot 5



2.4.4 Slot 6

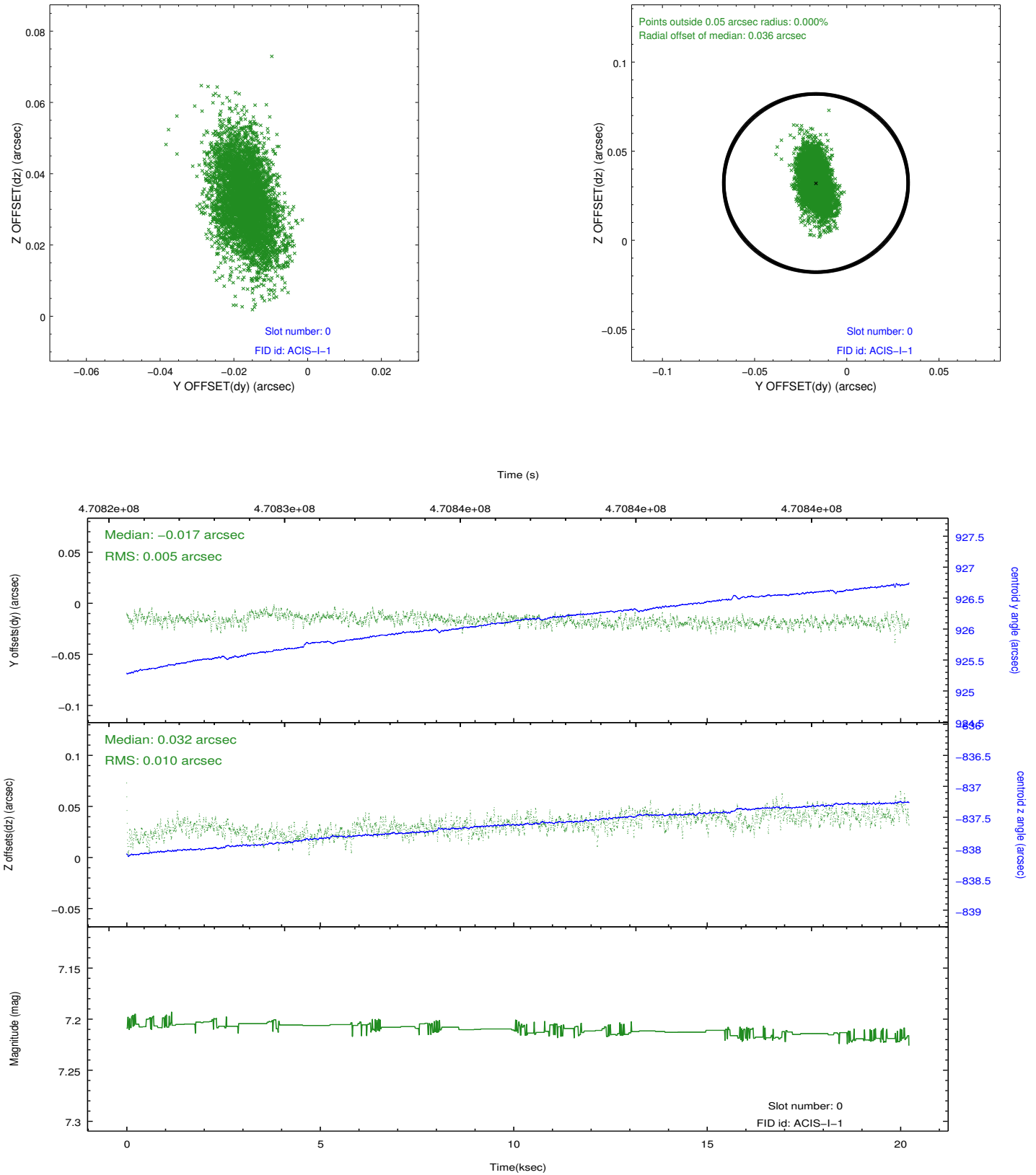


2.4.5 Slot 7

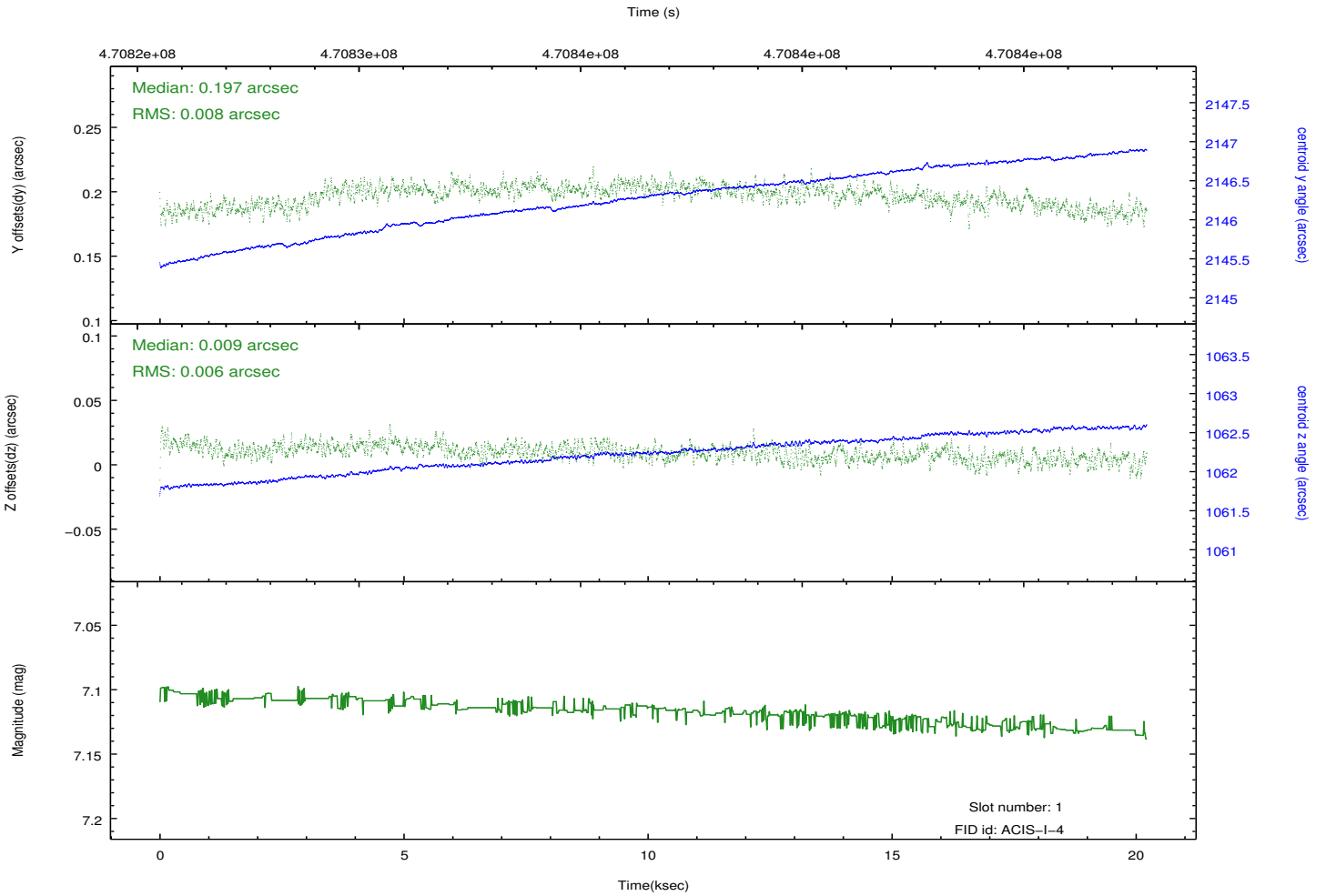
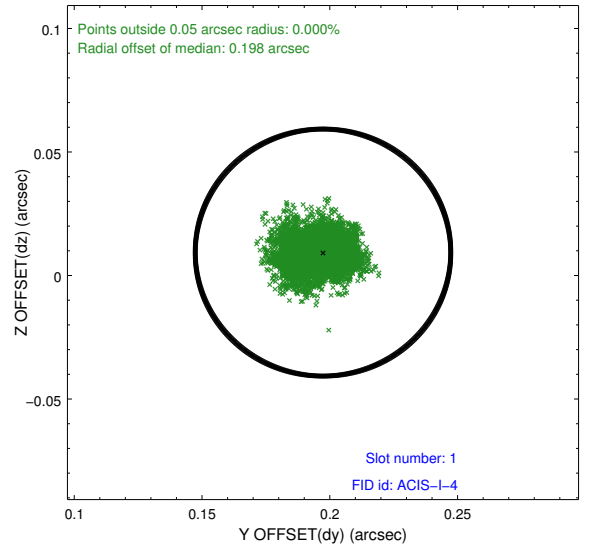
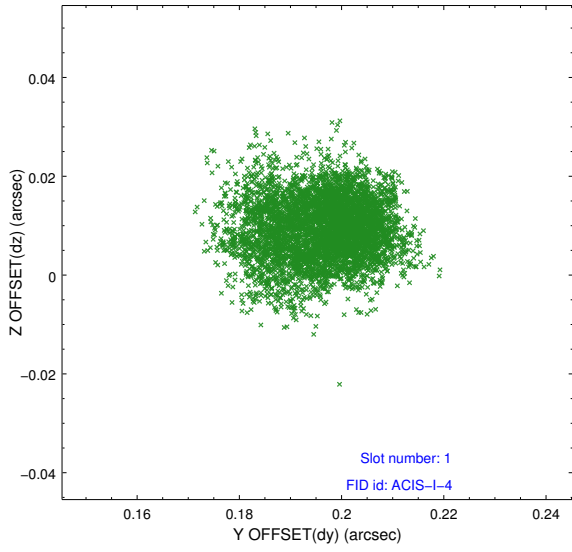


2.5 FID Slots

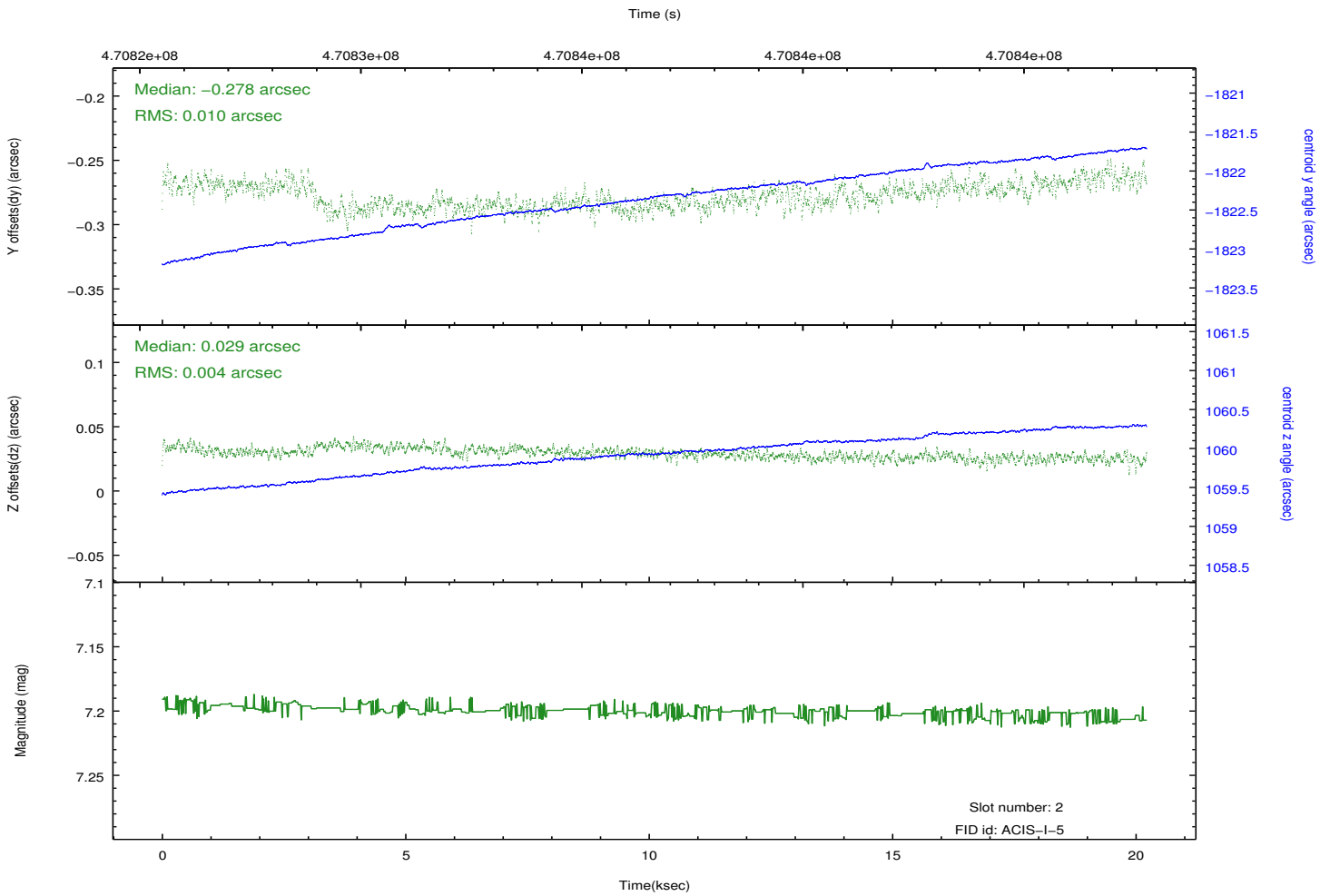
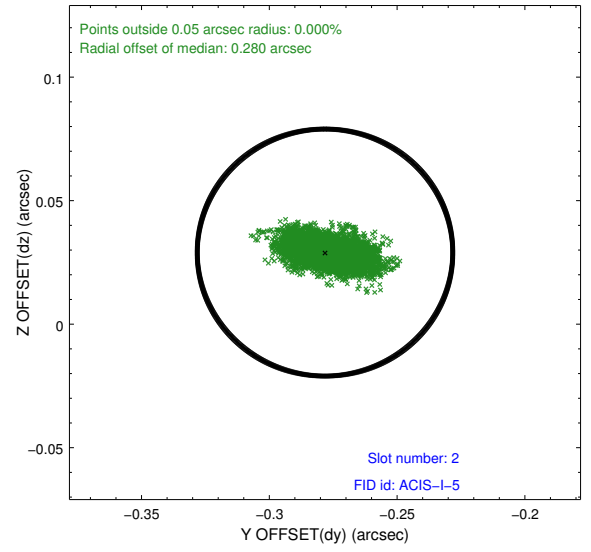
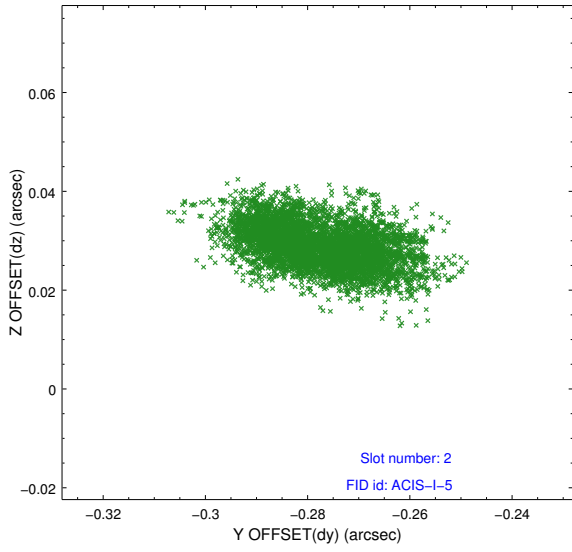
2.5.1 Slot 0



2.5.2 Slot 1



2.5.3 Slot 2



A Summary

A.1 Status

V&V Scientist	Beth Sundheim
V&V Date (YYYY-MM-DD)	2014.12.03
V&V Edition	1
V&V Disposition and Status	OK
V&V Charge Time	20.081288792014

A.2 Comments

These data have been reprocessed with new aspect alignment calibration files that correct small mean offsets (up to 0.4 arcsecs) and improve overall astrometric accuracy. The new calibration was determined using data from the time period being reprocessed and was performed using cross-correlation of X-ray sources with radio and optical counterparts.