

V&V Reference Report

L2 ASCDS Version : 10.2.1

Observation 16469 - L2 Version 2
Chandra X-Ray Center

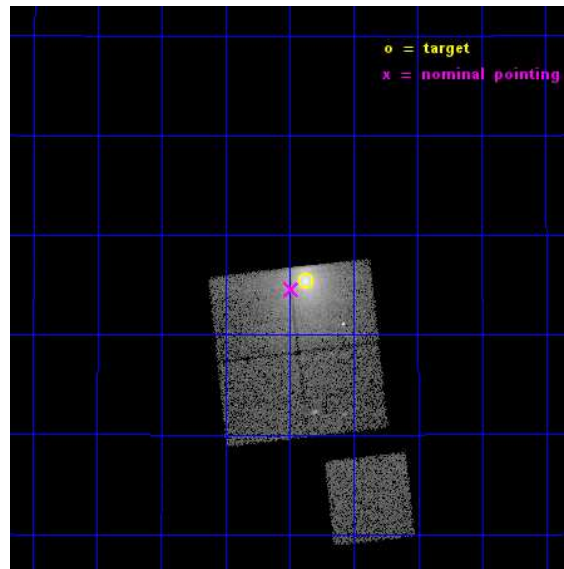
L2 Processing Date : Dec 10 2014

Contents

1	Front	2
2	OBI	3
2.1	OBI	3
2.1.1	Images	3
2.1.2	Bias	3
2.1.3	Parameters	4
2.1.4	Events	4
2.2	Compared Parameters	5
2.3	Aspect	6
2.4	Star Slots	9
2.4.1	Slot 3	9
2.4.2	Slot 4	10
2.4.3	Slot 5	11
2.4.4	Slot 6	12
2.4.5	Slot 7	13
2.5	FID Slots	14
2.5.1	Slot 0	14
2.5.2	Slot 1	15
2.5.3	Slot 2	16
A	Summary	17
A.1	Status	17
A.2	Comments	17

1 Front

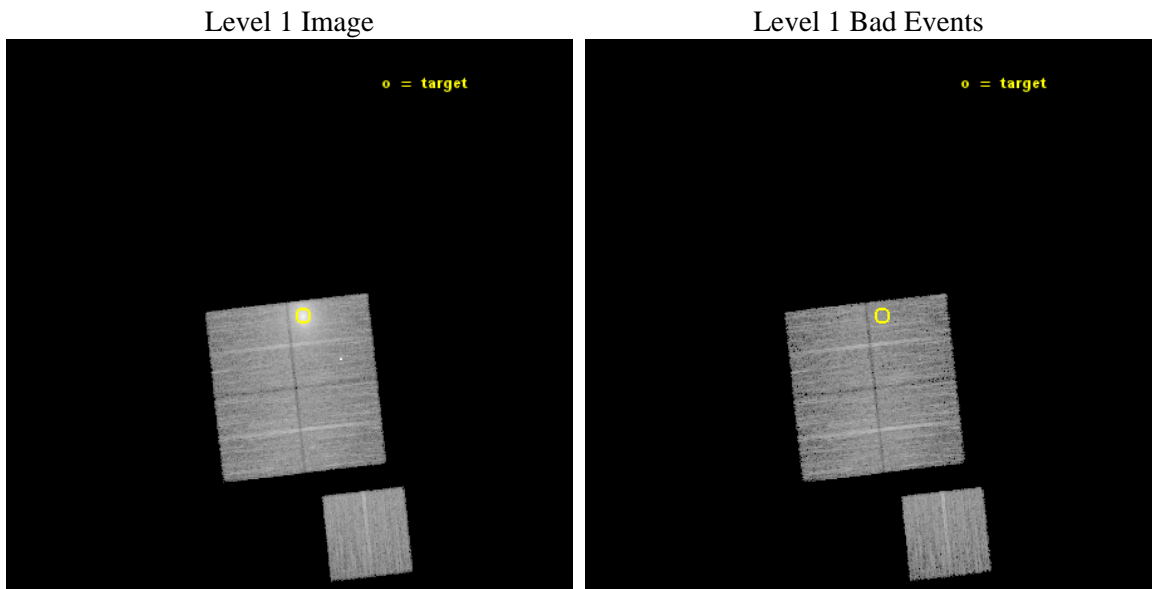
seq_num	890091	Sequence number
obs_id	16469	Observation id
title	AO-15 Calibration Observations of A1795	Proposal title
observer	Dr. CXC Calibration	Principal investigator
object	A1795	Source name
dtcycle	0	
cycle	P	events from which exps? Prim/Second/Both
ra_targ	207.219583	Observer's specified target RA [deg]
dec_targ	26.590833	Observer's specified target Dec [deg]
ra_nom	207.24657372716	Nominal RA [deg]
dec_nom	26.576384365519	Nominal Dec [deg]
roll_nom	173.5911092113	Nominal Roll [deg]
revision	2	Processing version of data
ontime	15084.600116014	Sum of GTIs [s]
livetime	14887.508710378	Livetime [s]
ontime0	15084.600116014	Sum of GTIs [s]
ontime1	15084.600116014	Sum of GTIs [s]
ontime2	15084.600116014	Sum of GTIs [s]
ontime3	15084.600116014	Sum of GTIs [s]
ontime6	15081.459145308	Sum of GTIs [s]
l2events	110005	Number of level 2 events



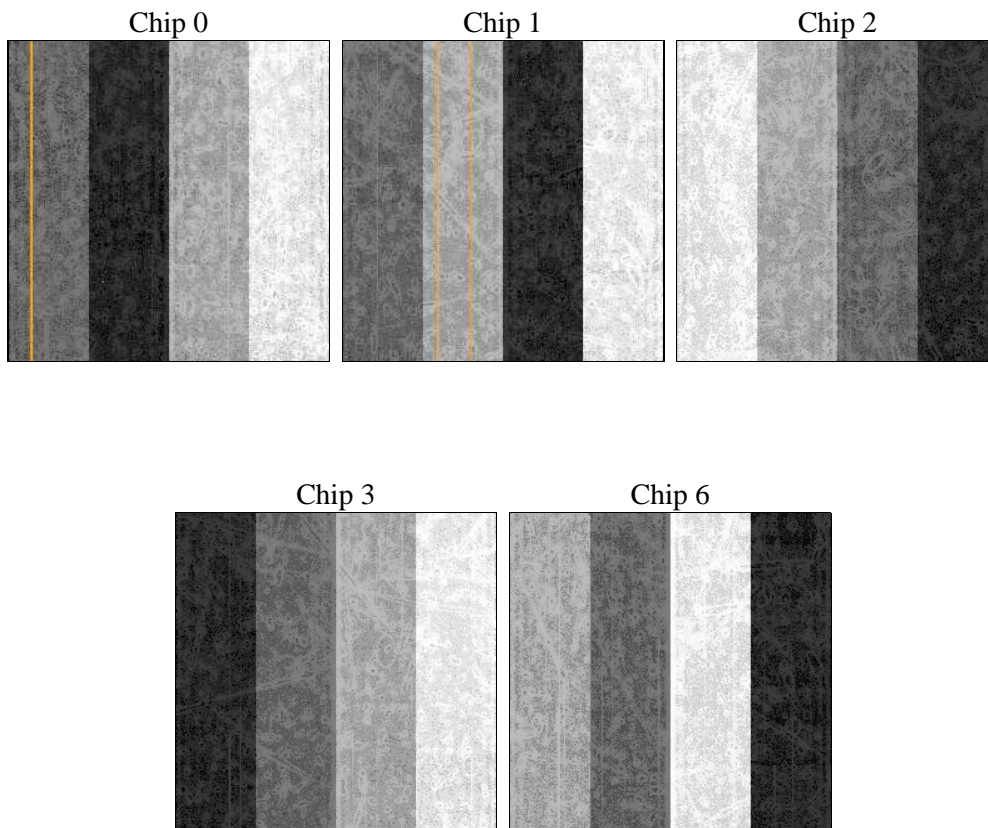
2 OBI

2.1 OBI

2.1.1 Images



2.1.2 Bias



2.1.3 Parameters

obi_num	0	Obi number	sched_exp_time	15000.000000	[s] Scheduled observation exposure time
ascdsver	10.3.1	Processing system revision	ontime	15084.600116014	Sum of GTIs [s]
caldbver	4.6.4	 	ontime0	15084.600116014	Sum of GTIs [s]
date	2014-12-11T02:36:25	Date and time of file creation	ontime1	15084.600116014	Sum of GTIs [s]
revision	2	Processing version of data	ontime2	15084.600116014	Sum of GTIs [s]
			ontime3	15084.600116014	Sum of GTIs [s]
			ontime6	15081.459145308	Sum of GTIs [s]
			l1events	427370	Number of level 1 events

2.1.4 Events

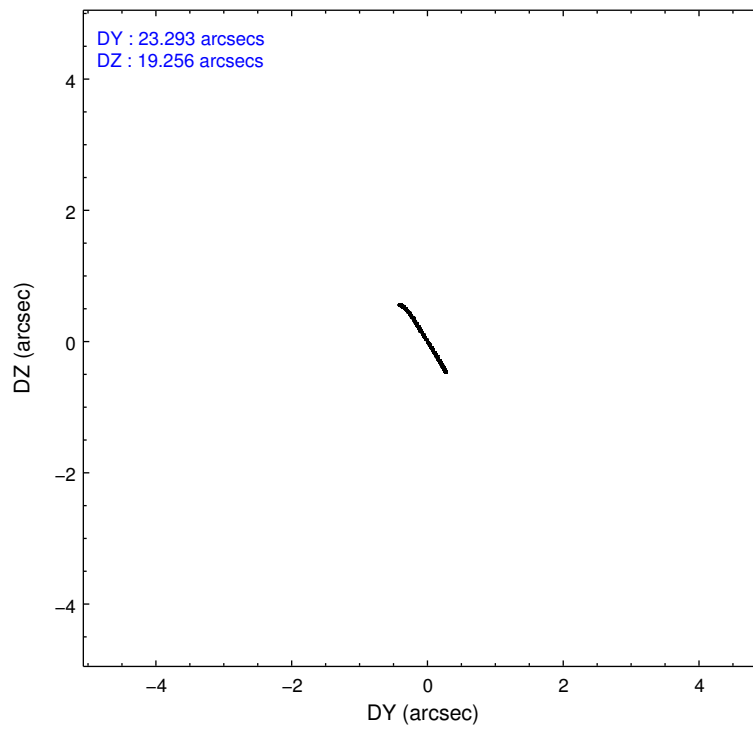
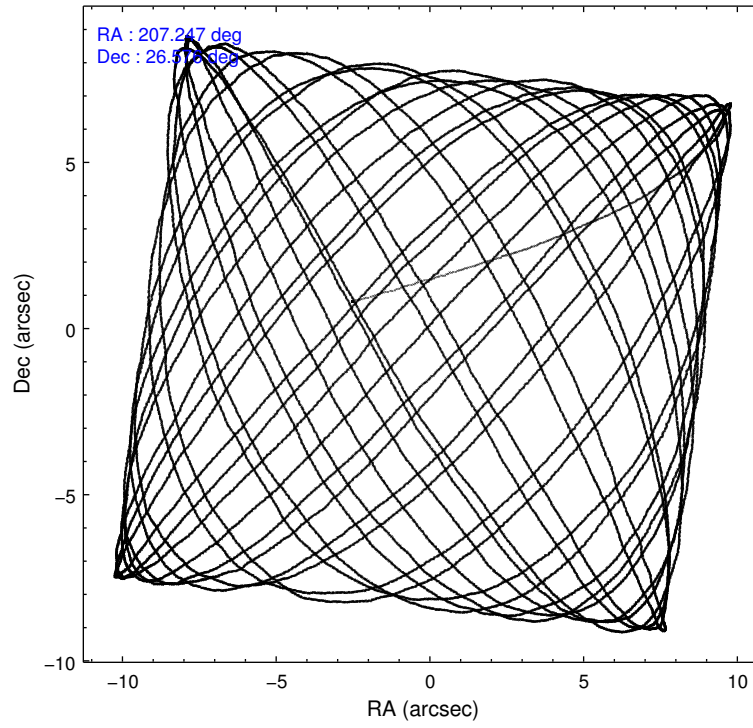
	ccd 0	ccd 1	ccd 2	ccd 3	ccd 6
level 1 events	132861	76540	72034	72420	73515
rejected events	57409	56859	62337	63713	64872
rejected %	43%	74%	86%	87%	88%

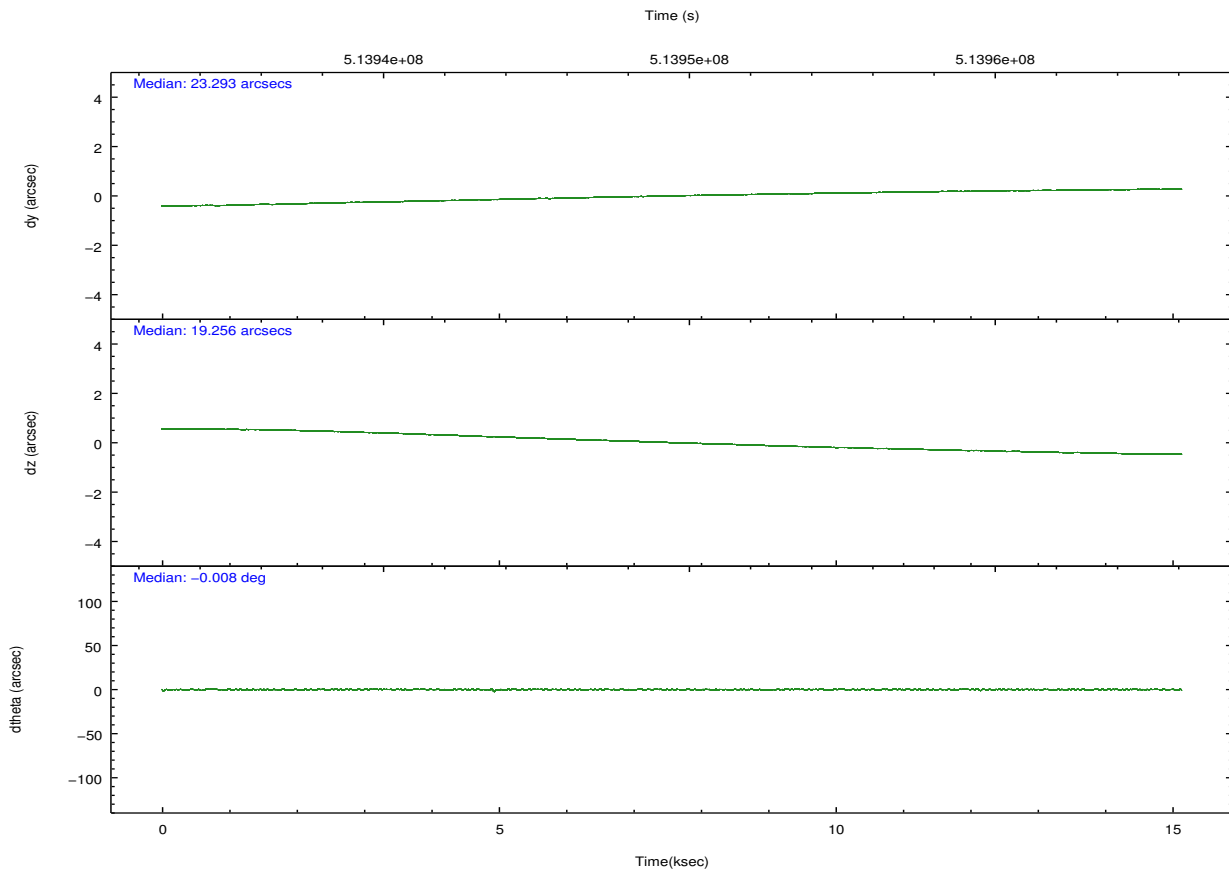
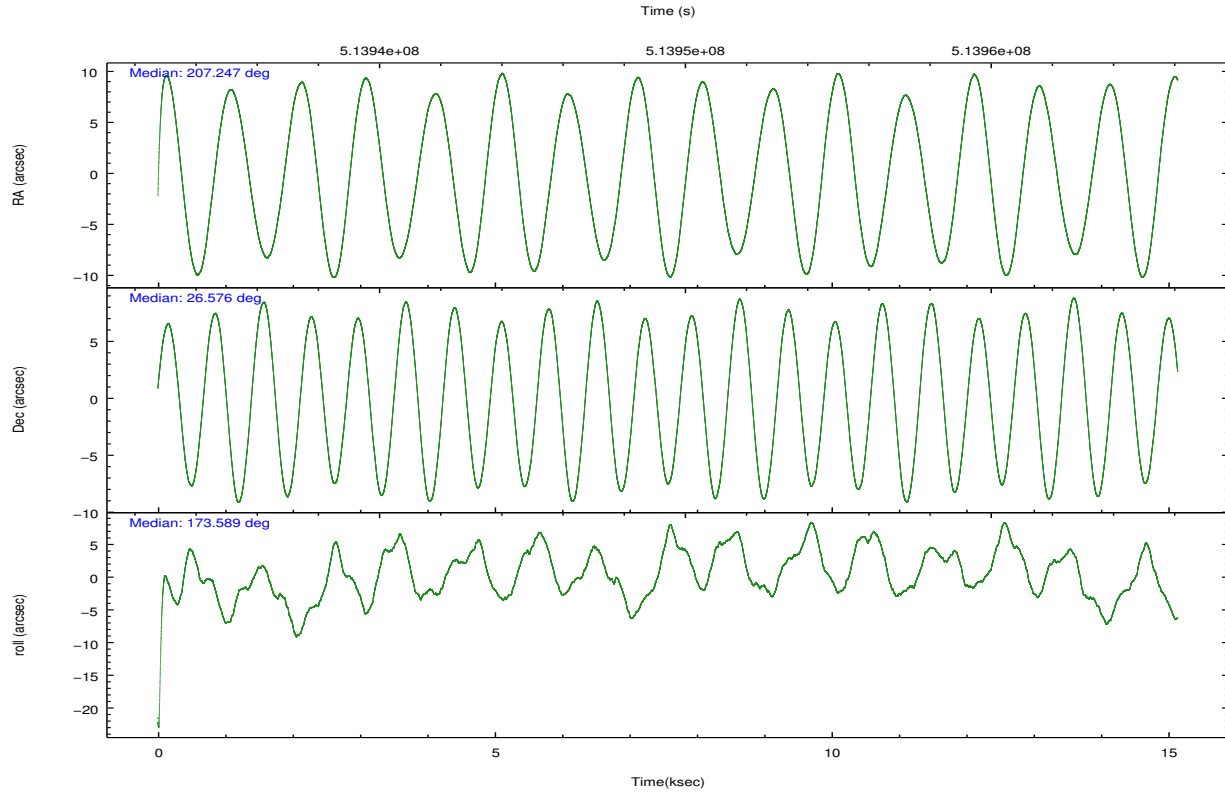
	ccd 0	ccd 1	ccd 2	ccd 3	ccd 6
grade 0 events	56436	11412	4137	3238	2909
	42%	14%	5%	4%	3%
grade 1 events	272	70	46	43	33
	0%	0%	0%	0%	0%
grade 2 events	9233	3366	2128	1906	1985
	6%	4%	2%	2%	2%
grade 3 events	3052	1269	845	910	898
	2%	1%	1%	1%	1%
grade 4 events	3002	1297	888	859	872
	2%	1%	1%	1%	1%
grade 5 events	3535	3600	3270	3929	3861
	2%	4%	4%	5%	5%
grade 6 events	3742	2341	1702	1798	1979
	2%	3%	2%	2%	2%
grade 7 events	53589	53185	59018	59737	60978
	40%	69%	81%	82%	82%

2.2 Compared Parameters

Parameter	Planned	Actual	Parameter	Planned	Actual
Instrument	ACIS	ACIS	Obspar format version number	7	7
Detector	ACIS-01236	ACIS-01236	Obspar file type	PREDICTED	ACTUAL
Grating	NONE	NONE	Obspar update status	NONE	UPDATED
Data mode	VFAINT	VFAINT	Number of optional ACIS chips dropped	0	0
Observation mode	POINTING	POINTING	On-chip summing requested	N	N
[deg] Pointing RA	207.274687	207.2465737271567	Subarray requested	NONE	NONE
[deg] Pointing Dec	26.587461	26.57638436551906	Alternating exposures requested	N	N
[deg] Pointing Roll	173.369863	173.5911092113005	[s] Primary exposure time	0.000000	3.1
[s] Window start time (MET)	512697667.184000	512697667.184000			
[s] Window stop time (MET)	515203267.184000	515203267.184000			
[mm] SIM focus pos	-0.782348	-0.7809083437167272			
[mm] SIM defocus	0	0.001439871863259334			
[mm] SIM translation stage pos	-254.359963	-254.3657361129205			
[mm] SIM translation stage offset	20.7675	20.77328310999084			
[s] Observation start time (MET)	513942271.184000	513941151.42808			
Observation start date	2014-04-15T09:43:24	2014-04-15T09:25:51			
[s] Observation end time (MET)	513957271.184000	513957405.87898			
Observation end date	2014-04-15T13:53:24	2014-04-15T13:56:45			
Read mode	TIMED	TIMED			

2.3 Aspect



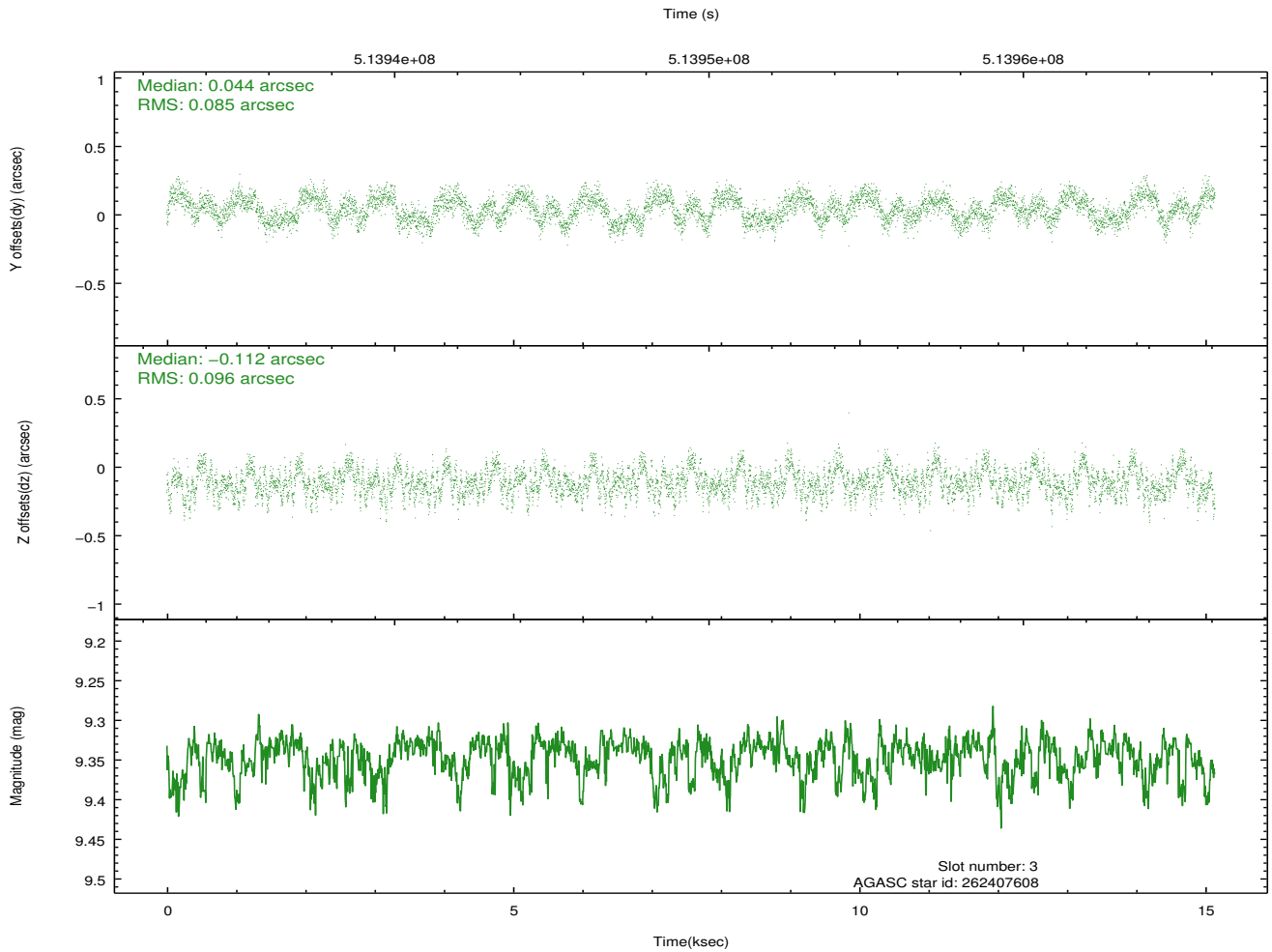
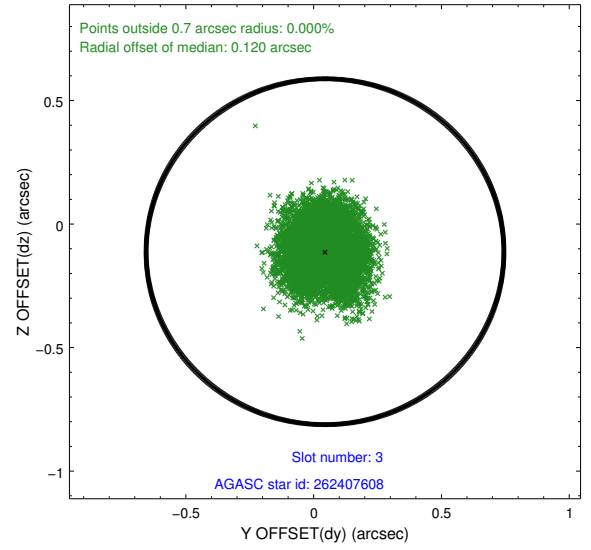
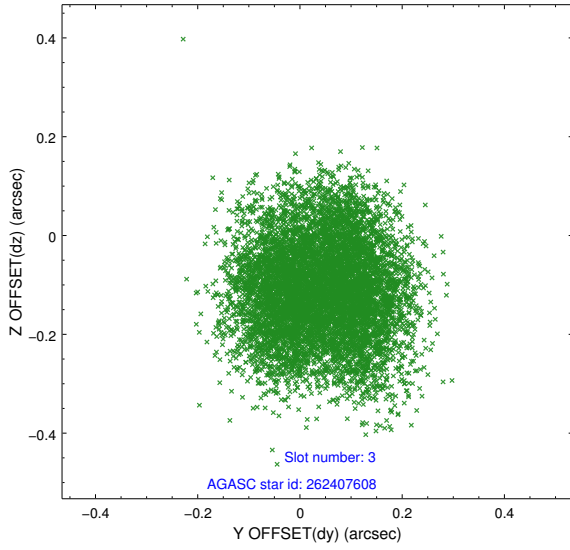


Slot Statistics

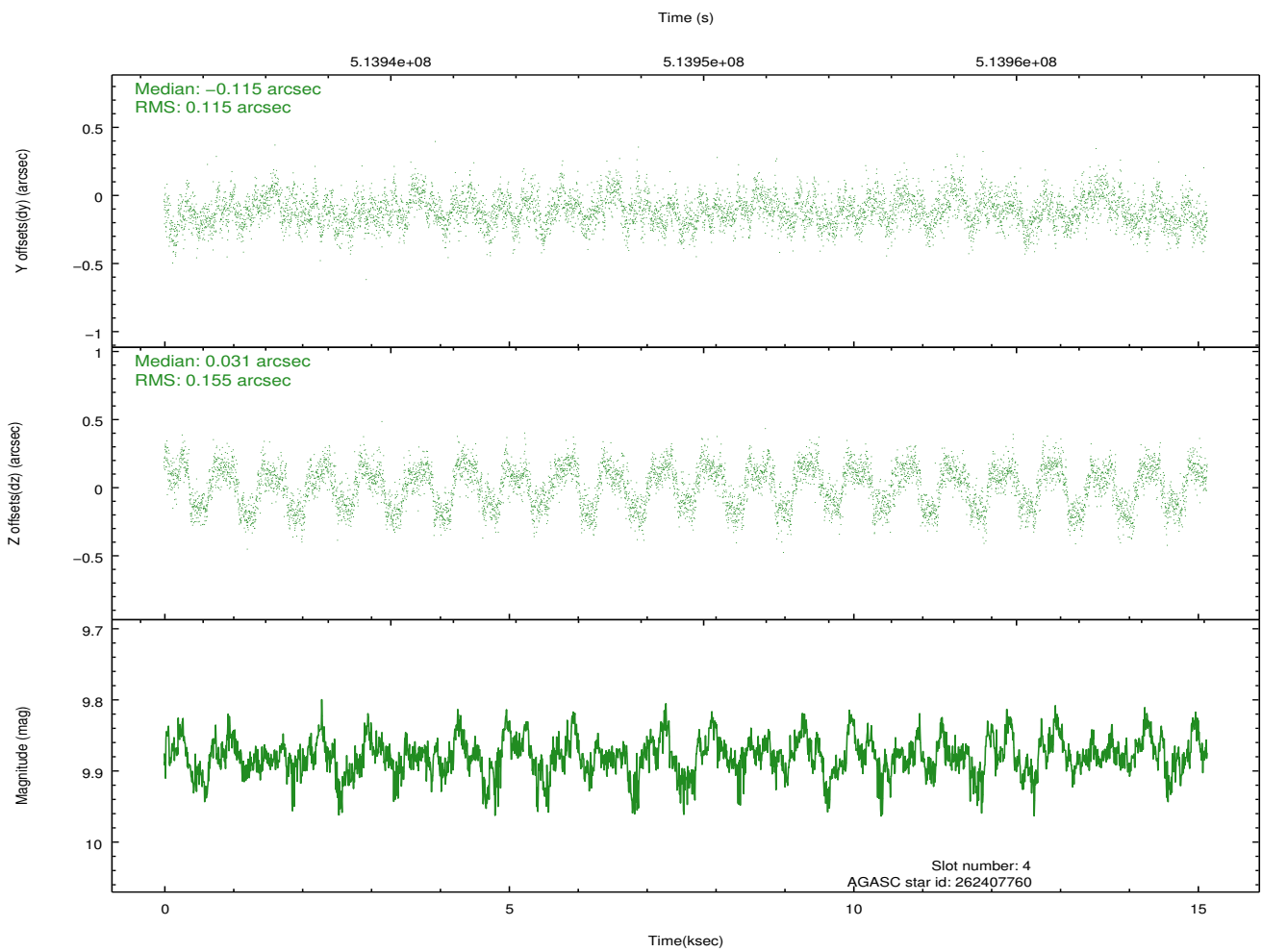
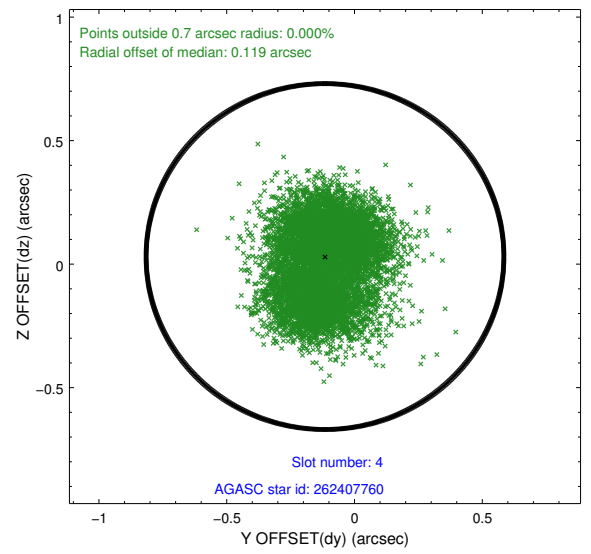
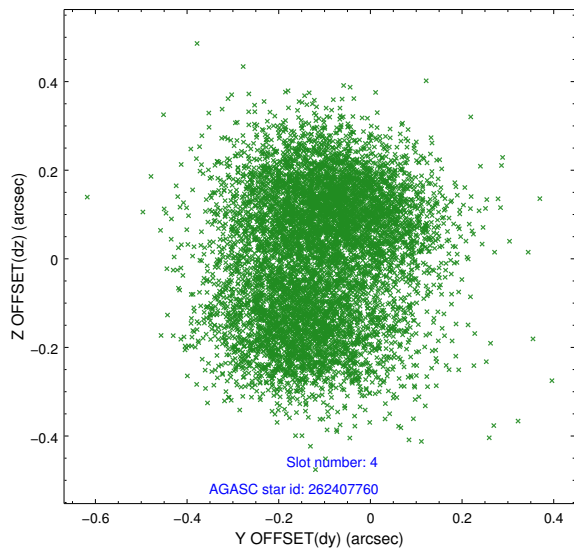
slot	status	used	id	mag	n_pts	med_dy	med_dz	dr1	dr2	ra	dec	mean_y	mean_z
0	FID		ACIS-I-1	7.18	3693	-0.081	0.177	0.013	0.023	0.000000	0.000000	916.32	-415.89
1	FID		ACIS-I-5	7.07	3693	-0.101	-0.017	0.010	0.016	0.000000	0.000000	-1831.84	1481.07
2	FID		ACIS-I-6	7.06	3693	0.091	-0.092	0.012	0.022	0.000000	0.000000	381.45	2126.04
3	GUIDE	used	262407608	9.35	7383	0.044	-0.112	0.139	0.214	207.378401	26.435507	-394.89	504.87
4	GUIDE	used	262407760	9.88	7377	-0.115	0.031	0.209	0.317	206.566773	26.577263	2261.23	293.76
5	GUIDE	used	262408096	9.31	7384	-0.016	-0.131	0.210	0.310	207.011678	26.515421	813.03	354.64
6	GUIDE	used	262408512	7.99	7385	0.101	0.159	0.086	0.145	207.800210	27.128796	-1446.34	-2133.21
7	GUIDE	used	262408936	9.71	7376	0.010	0.074	0.153	0.264	207.154731	26.726554	441.02	-452.79

2.4 Star Slots

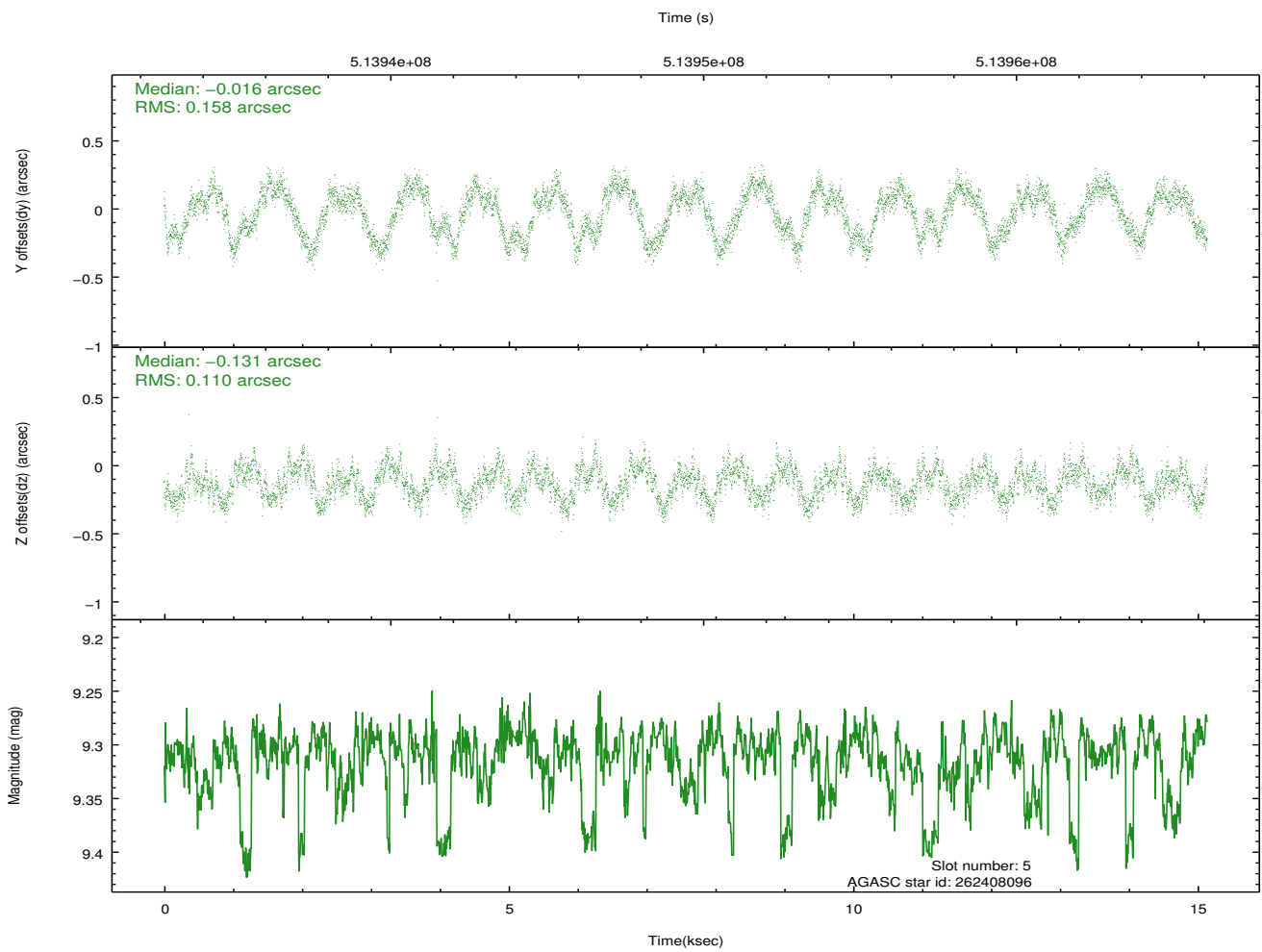
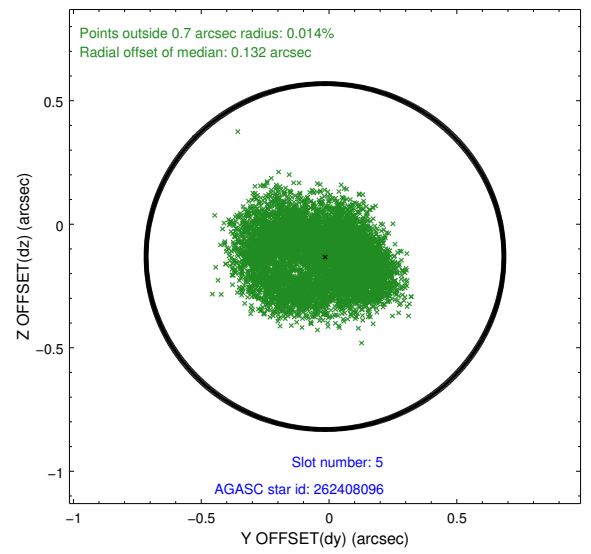
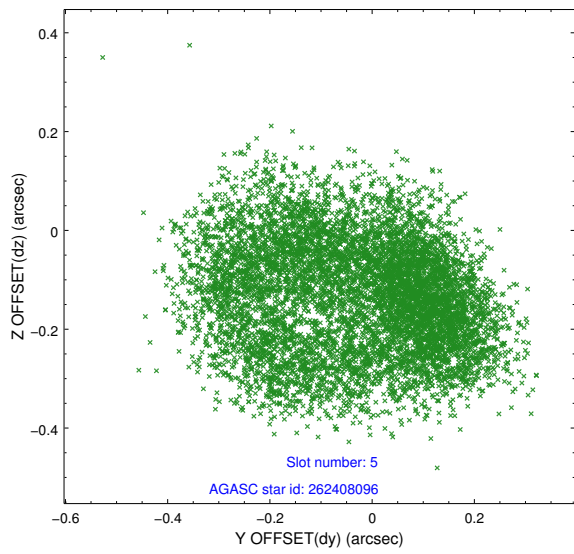
2.4.1 Slot 3



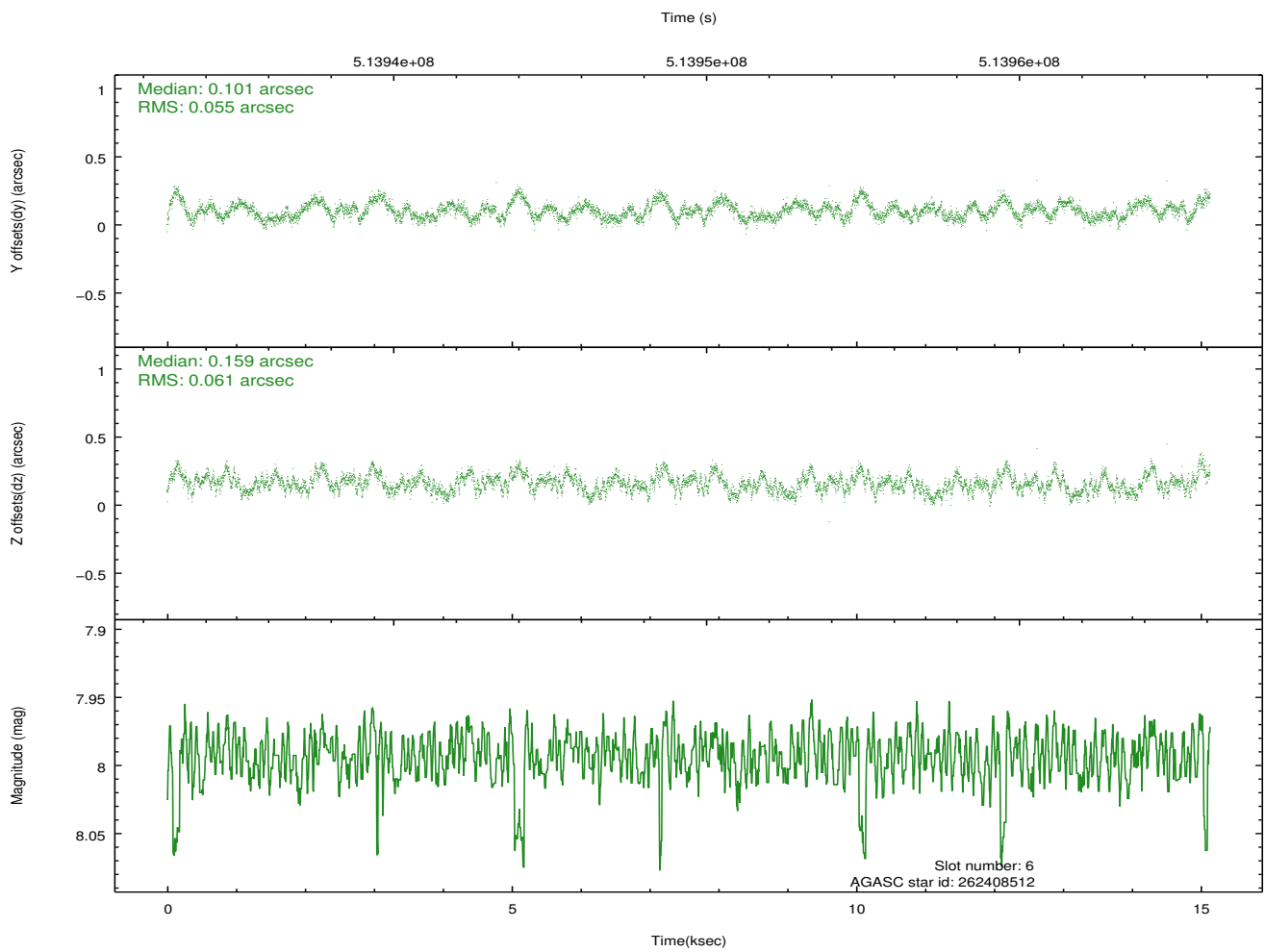
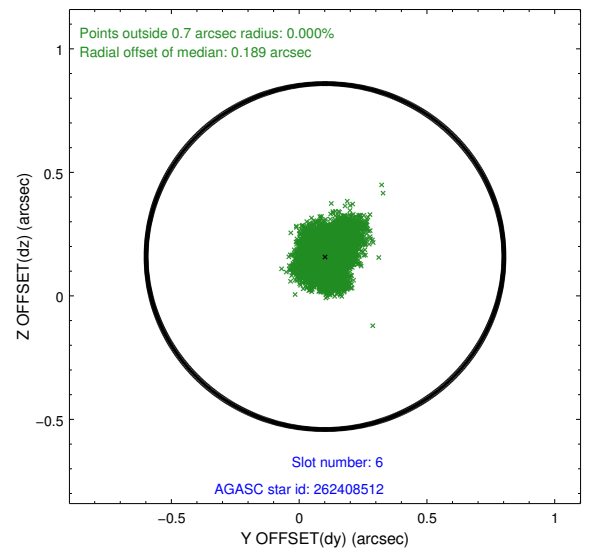
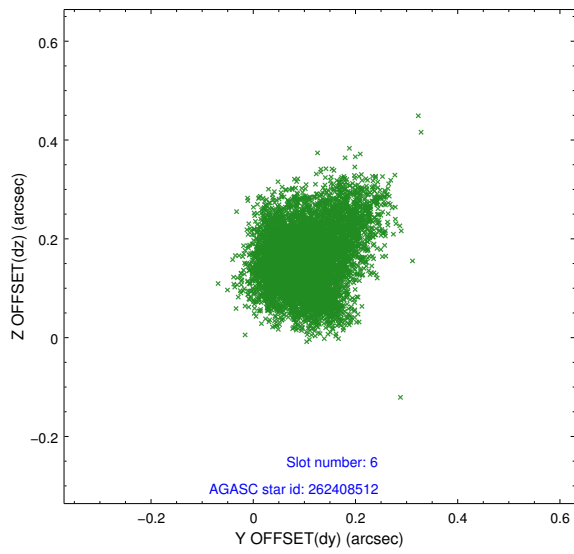
2.4.2 Slot 4



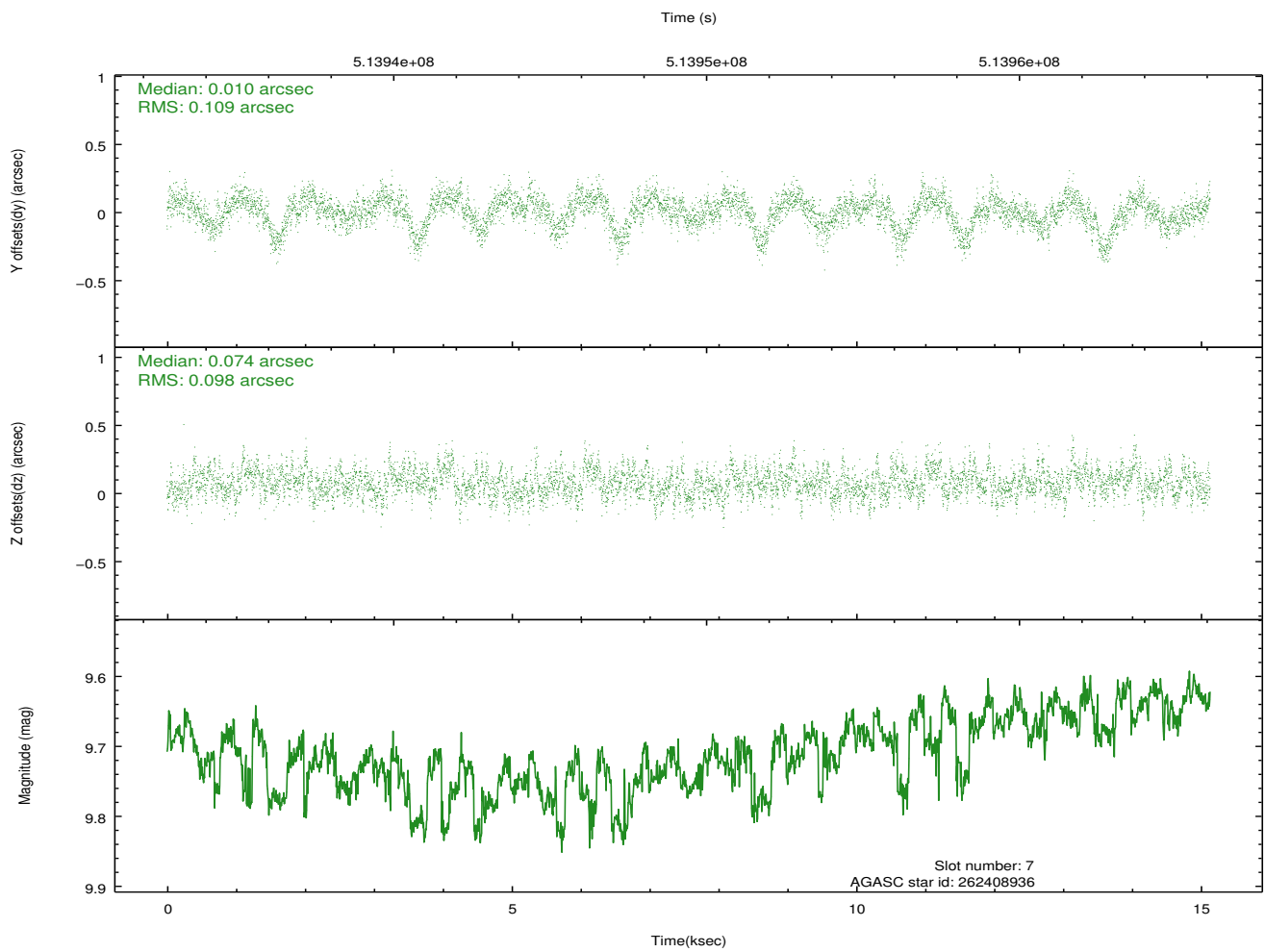
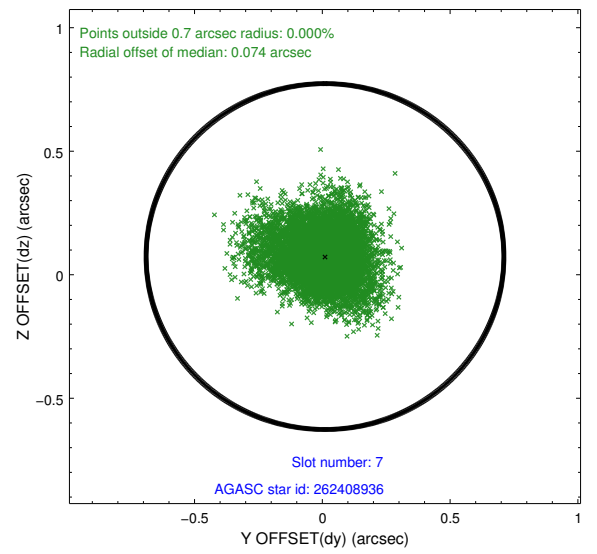
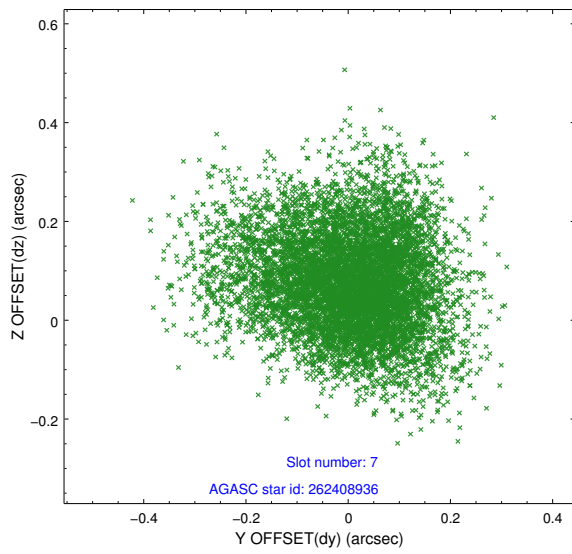
2.4.3 Slot 5



2.4.4 Slot 6

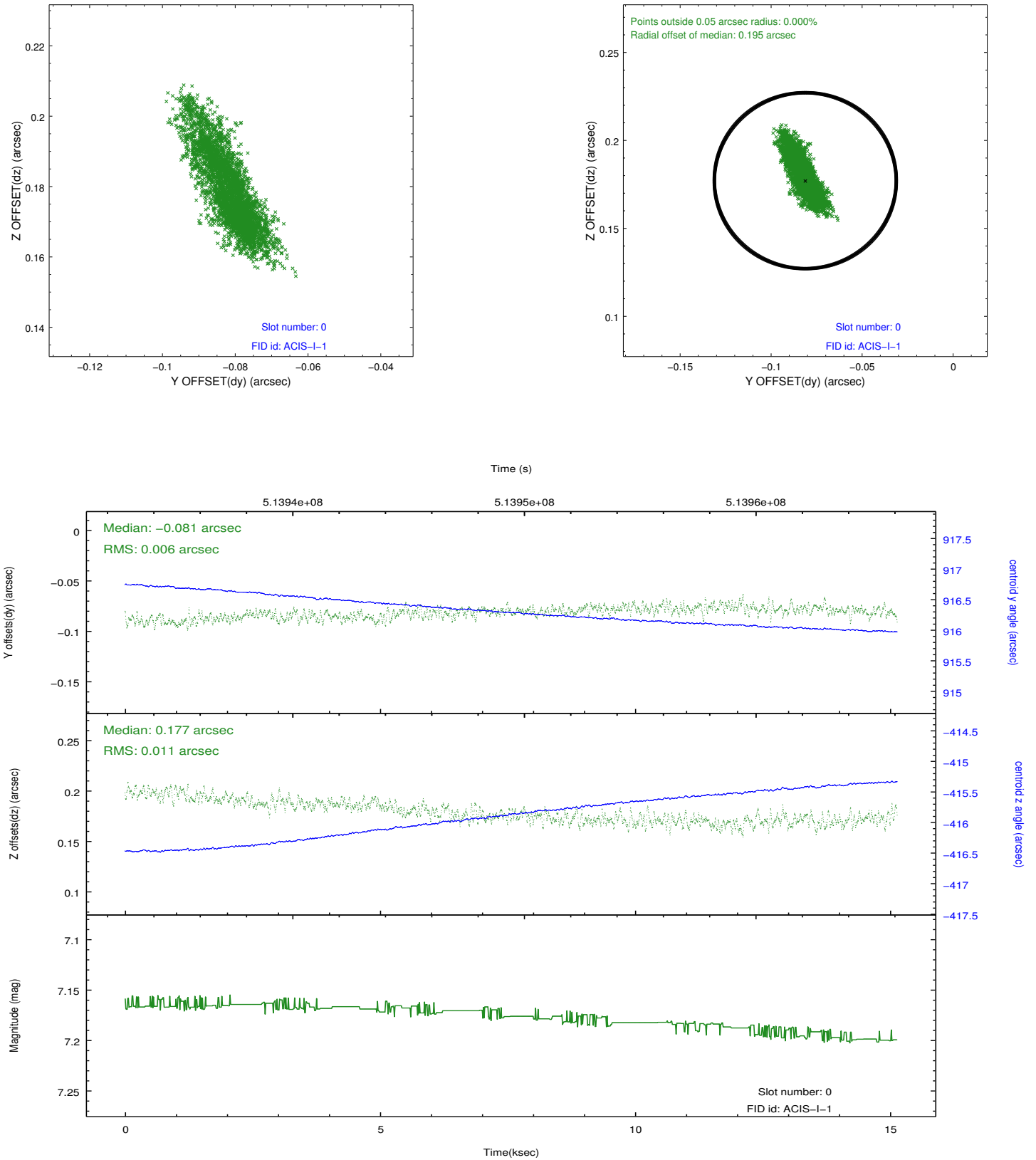


2.4.5 Slot 7

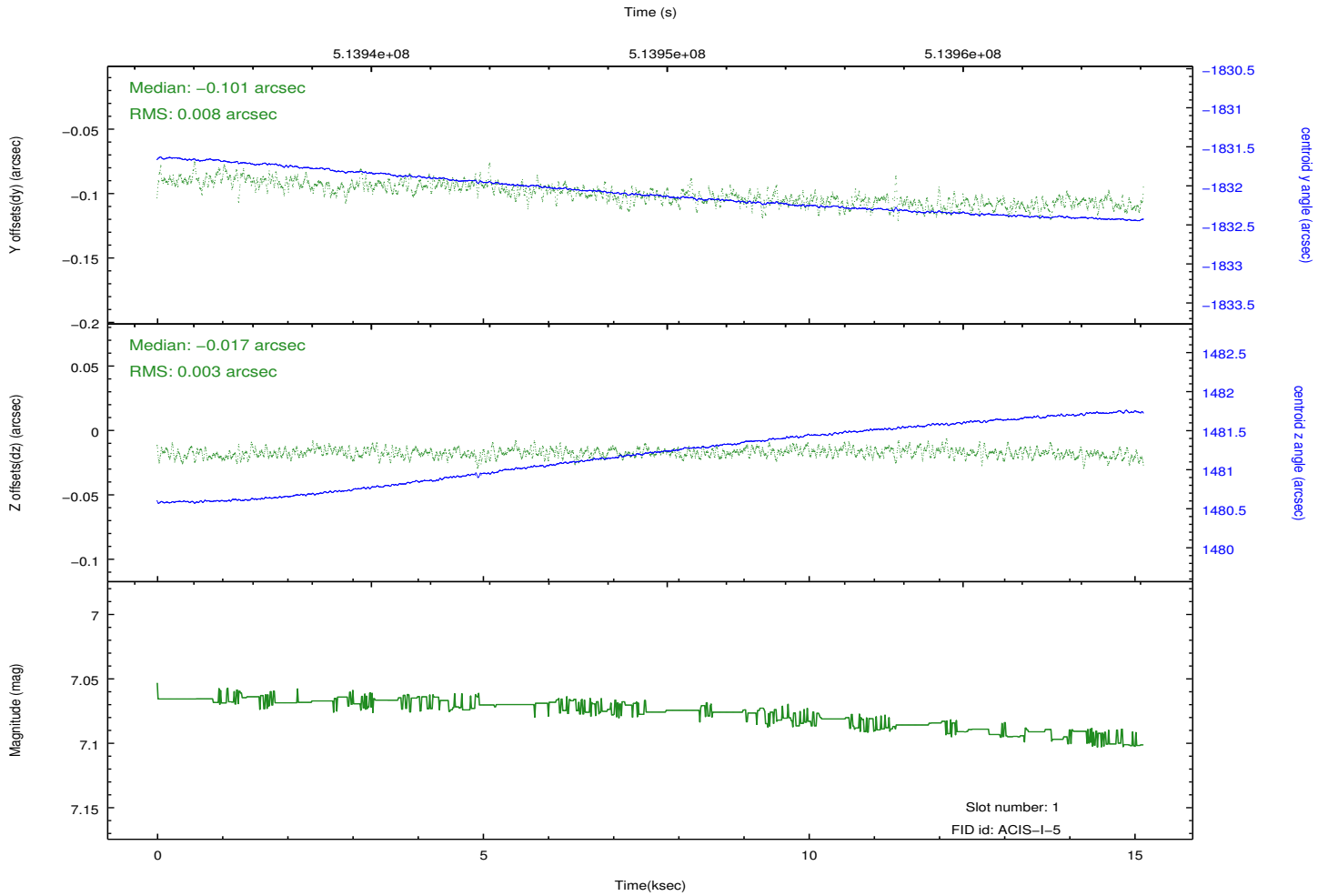
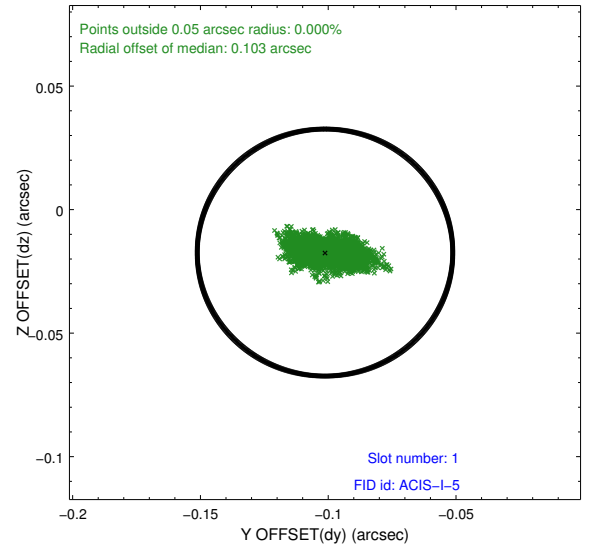
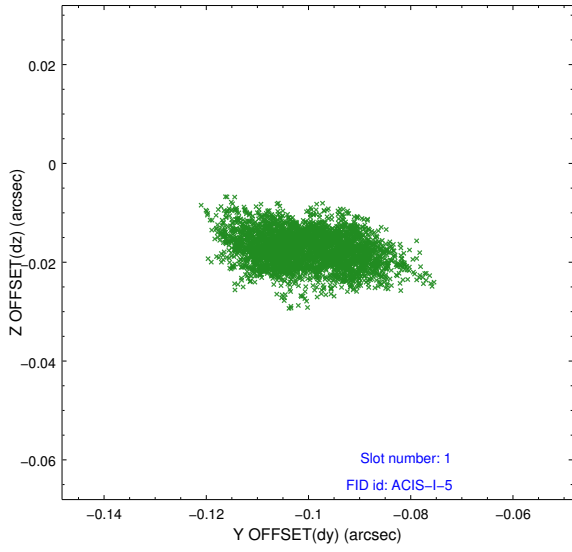


2.5 FID Slots

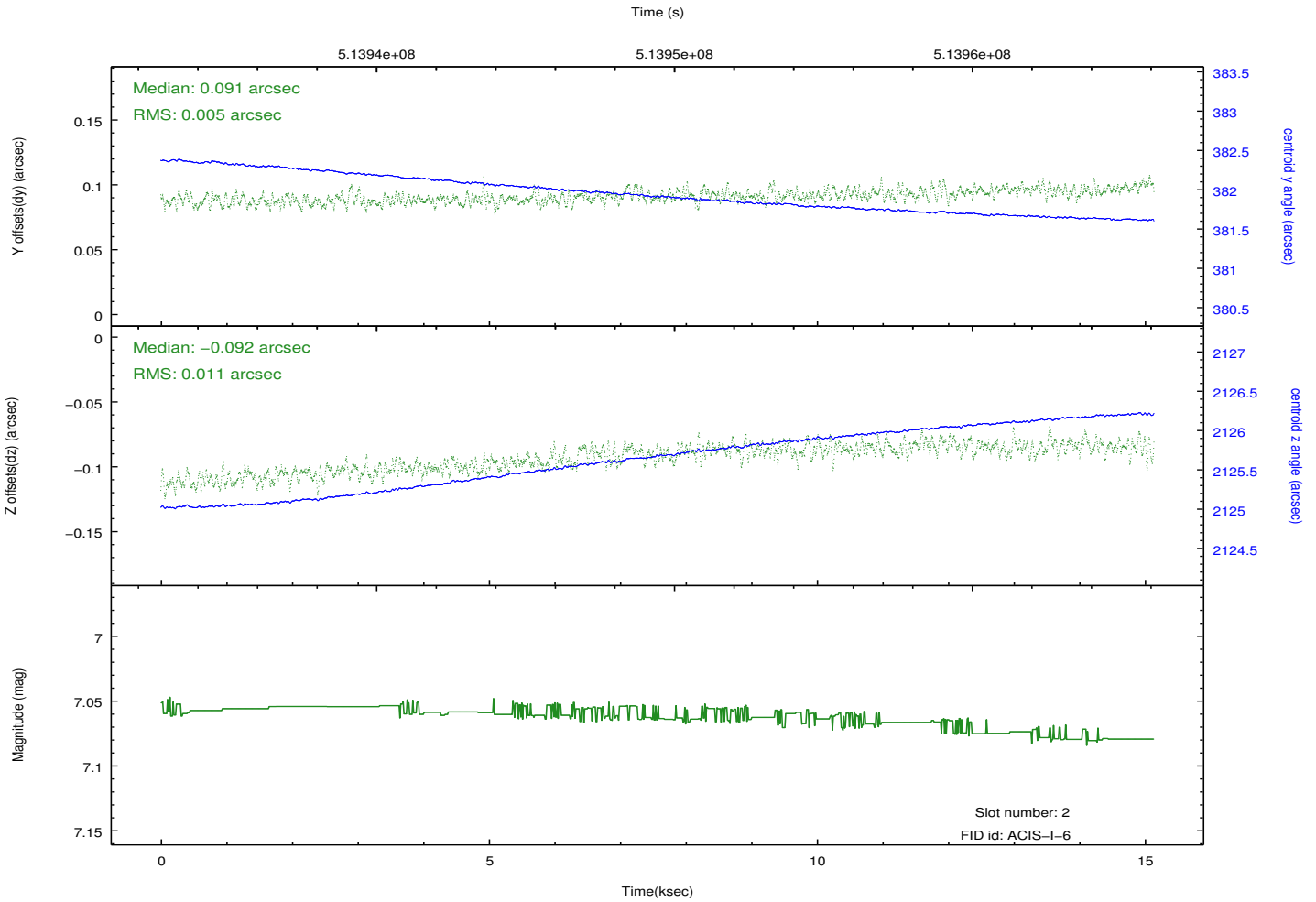
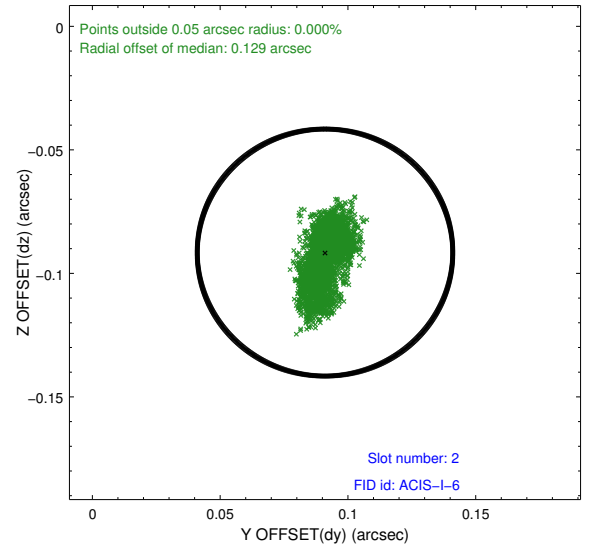
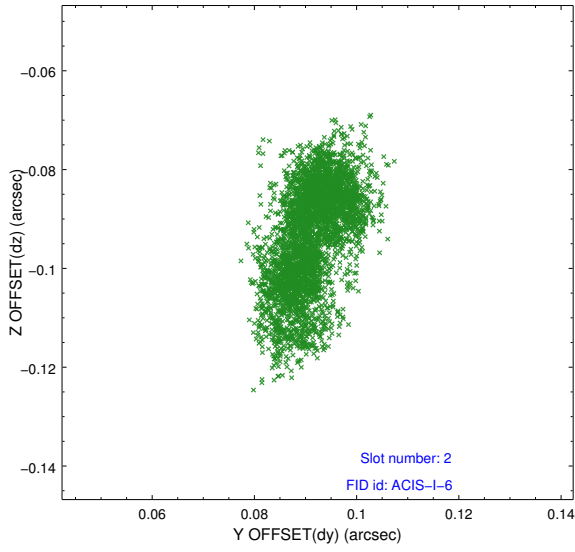
2.5.1 Slot 0



2.5.2 Slot 1



2.5.3 Slot 2



A Summary

A.1 Status

V&V Scientist	Beth Sundheim
V&V Date (YYYY-MM-DD)	2014.12.15
V&V Edition	1
V&V Disposition and Status	OK
V&V Charge Time	15.084600116014

A.2 Comments

Window preference met.

These data have been reprocessed with new aspect alignment calibration files that correct small mean offsets (up to 0.4 arcsecs) and improve overall astrometric accuracy. The new calibration was determined using data from the time period being reprocessed and was performed using cross-correlation of X-ray sources with radio and optical counterparts.