

V&V Reference Report

L2 ASCDS Version : 8.4.5

Observation 1659 - L2 Version 3
Chandra X-Ray Center

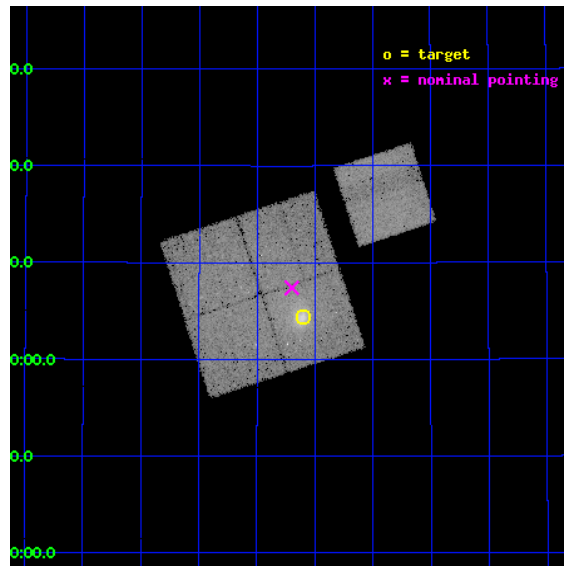
L2 Processing Date : Sep 2 2012

Contents

1	Front	2
2	OBI	3
2.1	OBI	3
2.1.1	Images	3
2.1.2	Bias	3
2.1.3	Parameters	4
2.1.4	Events	4
2.2	Compared Parameters	5
2.3	Aspect	6
2.4	Star Slots	9
2.4.1	Slot 3	9
2.4.2	Slot 4	10
2.4.3	Slot 5	11
2.4.4	Slot 6	12
2.4.5	Slot 7	13
2.5	FID Slots	14
2.5.1	Slot 0	14
2.5.2	Slot 1	15
2.5.3	Slot 2	16
A	Summary	17
A.1	Status	17
A.2	Comments	17

1 Front

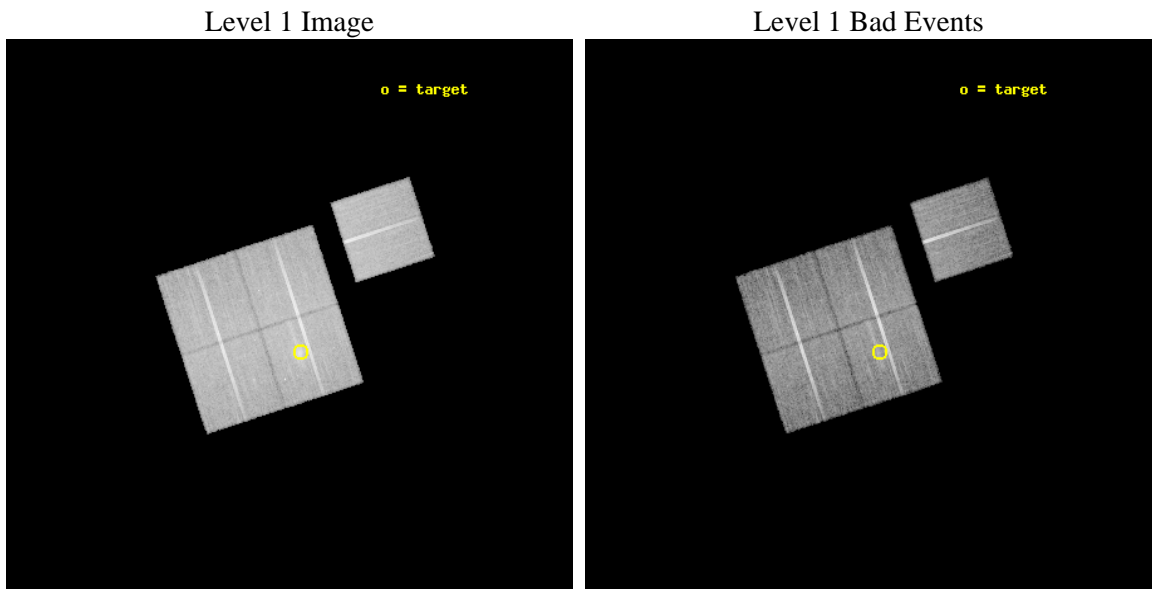
seq_num	800127	Sequence number
obs_id	1659	Observation id
title	DETERMINATION OF H0 AND Q0, 2000 PART 1	Proposal title
observer	DR. LEON VANSPEYBROECK	Principal investigator
object	ZWCL 1953	Source name
dtycle	0	
cycle	P	events from which exps? Prim/Second/Both
ra_targ	132.52625	Observer's specified target RA [deg]
dec_targ	36.072222	Observer's specified target Dec [deg]
ra_nom	132.54956827141	Nominal RA [deg]
dec_nom	36.123358815007	Nominal Dec [deg]
roll_nom	71.971782485765	Nominal Roll [deg]
revision	3	Processing version of data
ontime	25190.559001327	Sum of GTIs [s]
liveltime	24861.425802954	Livetime [s]
ontime0	25193.699951559	Sum of GTIs [s]
ontime1	25193.699951559	Sum of GTIs [s]
ontime2	25193.699951559	Sum of GTIs [s]
ontime3	25190.559001327	Sum of GTIs [s]
ontime6	25193.699951559	Sum of GTIs [s]
l2events	112977	Number of level 2 events



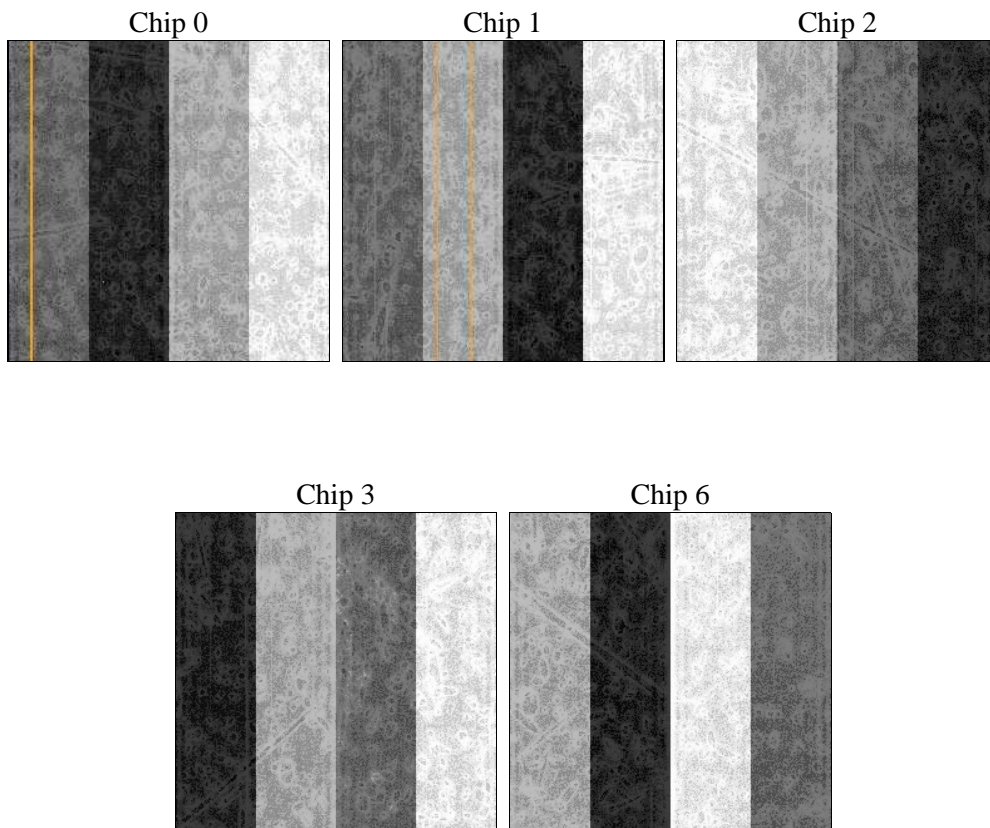
2 OBI

2.1 OBI

2.1.1 Images



2.1.2 Bias



2.1.3 Parameters

obi_num	0	Obi number	sched_exp_time	25000.000000	[s] Scheduled observation exposure time
ascdsver	8.4.5	Processing system revision	ontime	25190.559001327	Sum of GTIs [s]
caldbver	4.5.1.1	 	ontime0	25193.699951559	Sum of GTIs [s]
date	2012-09-02T10:25:37	Date and time of file creation	ontime1	25193.699951559	Sum of GTIs [s]
revision	3	Processing version of data	ontime2	25193.699951559	Sum of GTIs [s]
			ontime3	25190.559001327	Sum of GTIs [s]
			ontime6	25193.699951559	Sum of GTIs [s]
			l1events	845349	Number of level 1 events

2.1.4 Events

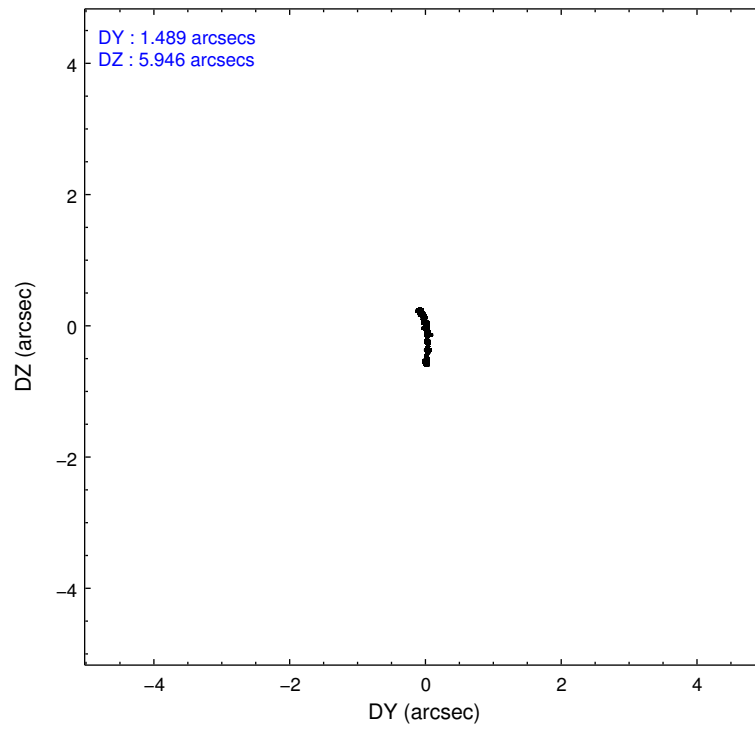
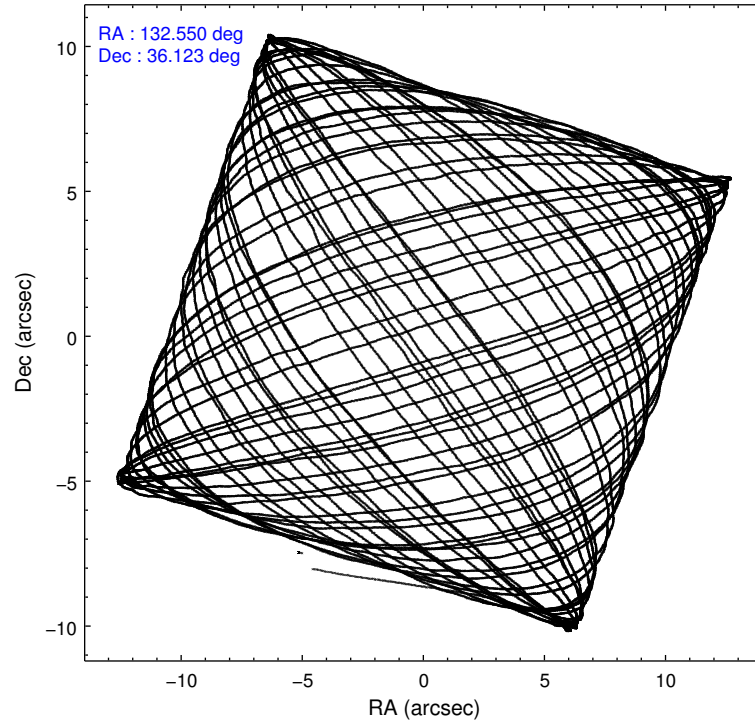
	ccd 0	ccd 1	ccd 2	ccd 3	ccd 6
level 1 events	158586	158398	171925	183179	173261
rejected events	135702	134445	148940	151708	146096
rejected %	85%	84%	86%	82%	84%

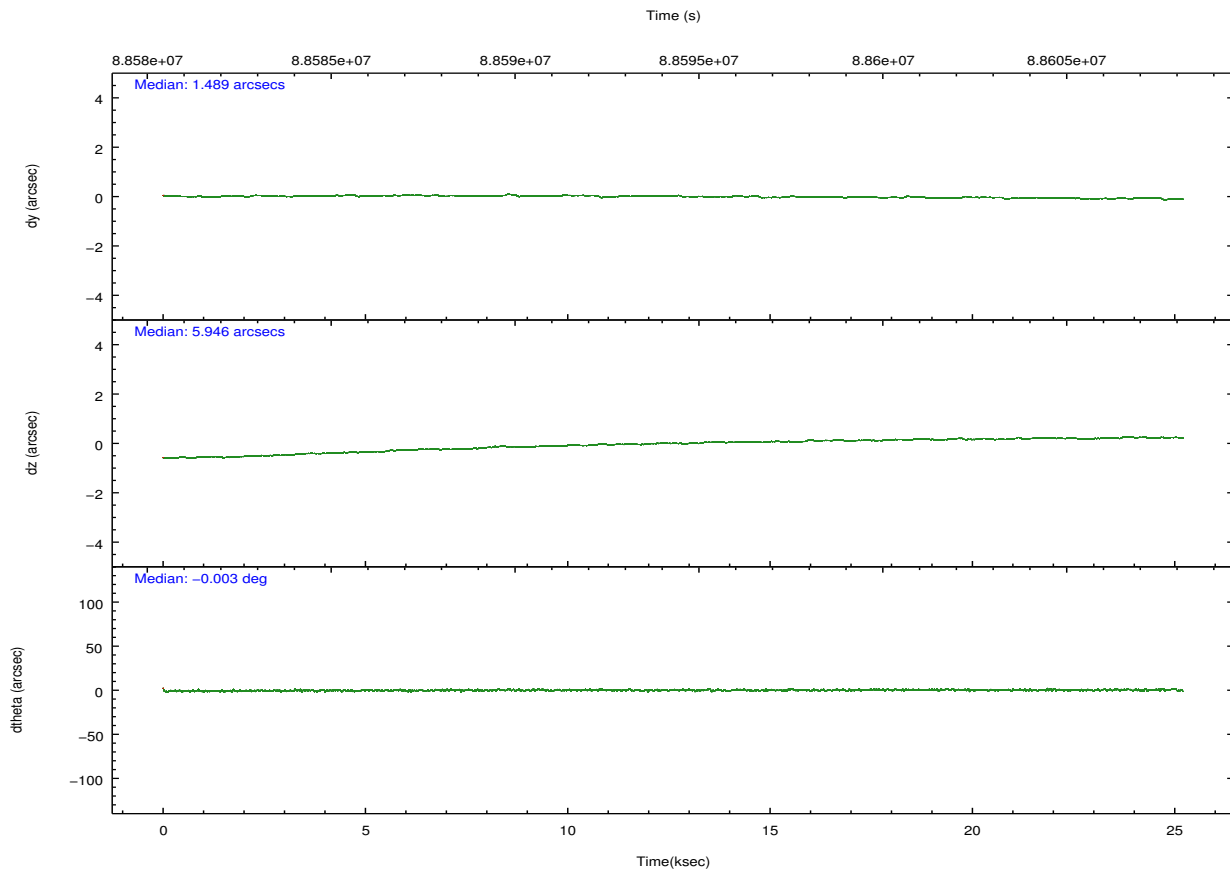
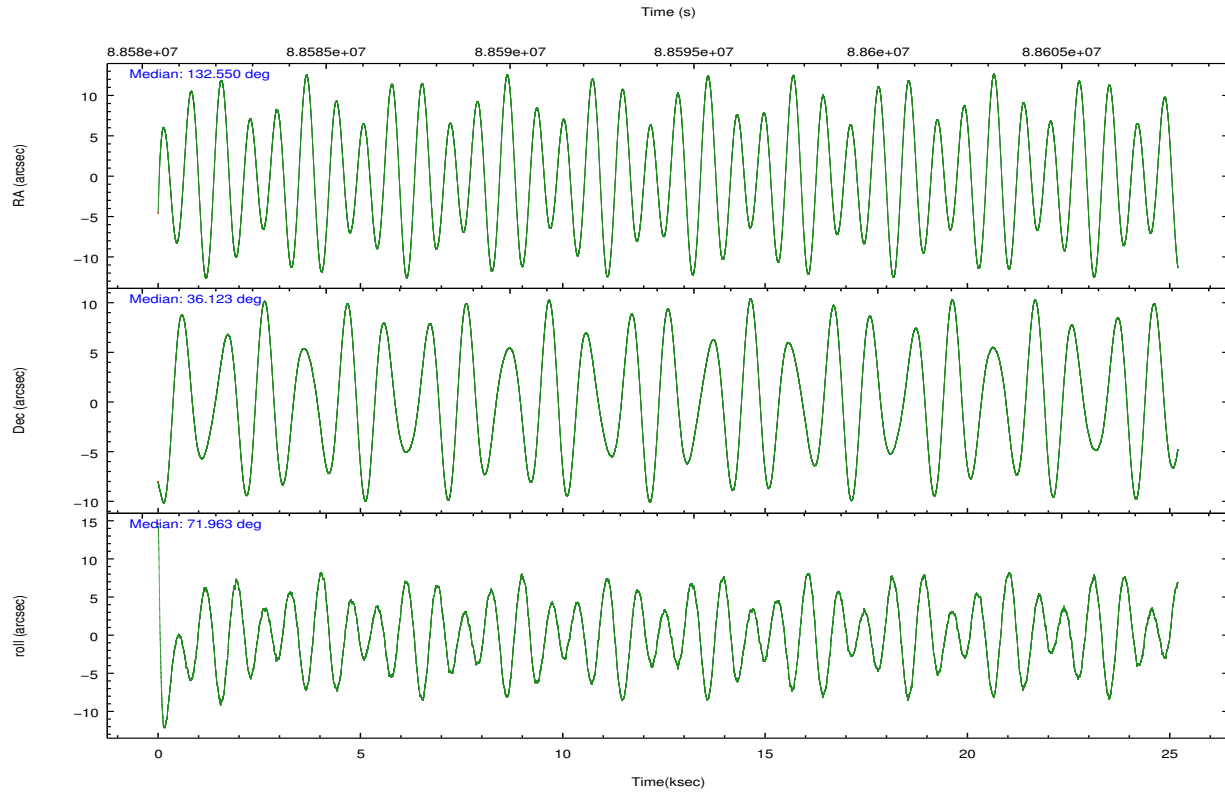
	ccd 0	ccd 1	ccd 2	ccd 3	ccd 6
grade 0 events	11378	11661	11848	18878	14804
	7%	7%	6%	10%	8%
grade 1 events	85	93	80	107	90
	0%	0%	0%	0%	0%
grade 2 events	4610	4556	4576	5176	4940
	2%	2%	2%	2%	2%
grade 3 events	1914	2131	1780	2054	1983
	1%	1%	1%	1%	1%
grade 4 events	1795	2125	1771	2022	1942
	1%	1%	1%	1%	1%
grade 5 events	5604	6148	5411	6238	6524
	3%	3%	3%	3%	3%
grade 6 events	3332	3658	3183	3547	3653
	2%	2%	1%	1%	2%
grade 7 events	129868	128026	143276	145157	139325
	81%	80%	83%	79%	80%

2.2 Compared Parameters

Parameter	Planned	Actual	Parameter	Planned	Actual
Instrument	ACIS	ACIS	Obspar format version number	7	7
Detector	ACIS-01236	ACIS-01236	Obspar file type	PREDICTED	ACTUAL
Grating	NONE	NONE	Obspar update status	NONE	UPDATED
Data mode	FAINT	FAINT	Number of optional ACIS chips dropped	0	0
Observation mode	POINTING	POINTING	On-chip summing requested	N	N
[deg] Pointing RA	132.556539	132.5495682714061	Subarray requested	NONE	NONE
[deg] Pointing Dec	36.096450	36.12335881500738	Alternating exposures requested	N	N
[deg] Pointing Roll	71.758978	71.97178248576452	[s] Primary exposure time	0.000000	3.1
[mm] SIM focus pos	-0.782348	-0.7809083437167272			
[mm] SIM defocus	0	0.001439871863259334			
[mm] SIM translation stage pos	-225.840463	-225.8433433320239			
[mm] SIM translation stage offset	-7.752	-7.749109670905796			
[s] Observation start time (MET)	88581898.184000	88580793.630885			
Observation start date	2000-10-22T06:03:54	2000-10-22T05:46:33			
[s] Observation end time (MET)	88606898.184000	88607454.906893			
Observation end date	2000-10-22T13:00:34	2000-10-22T13:10:54			
Read mode	TIMED	TIMED			

2.3 Aspect



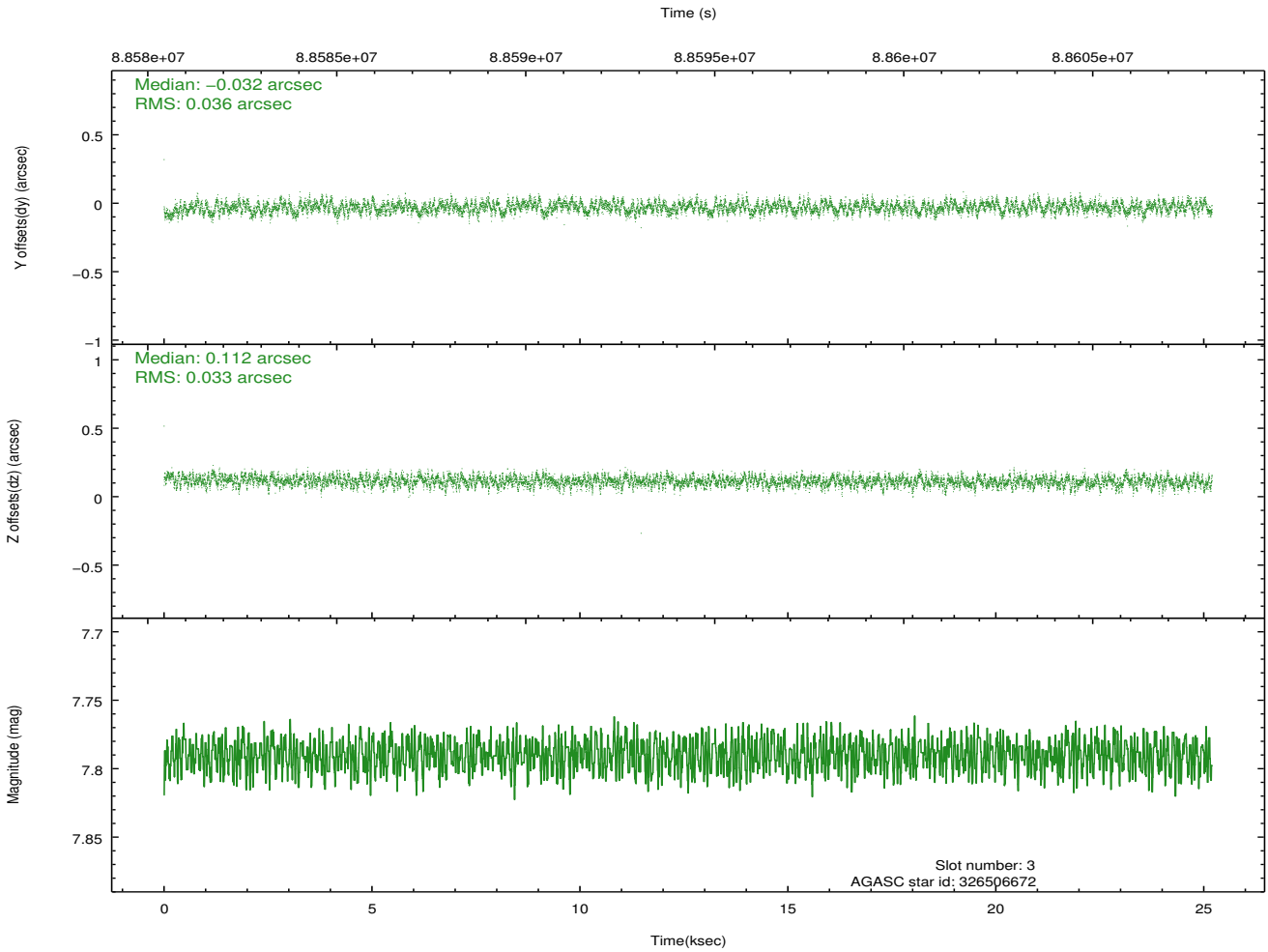
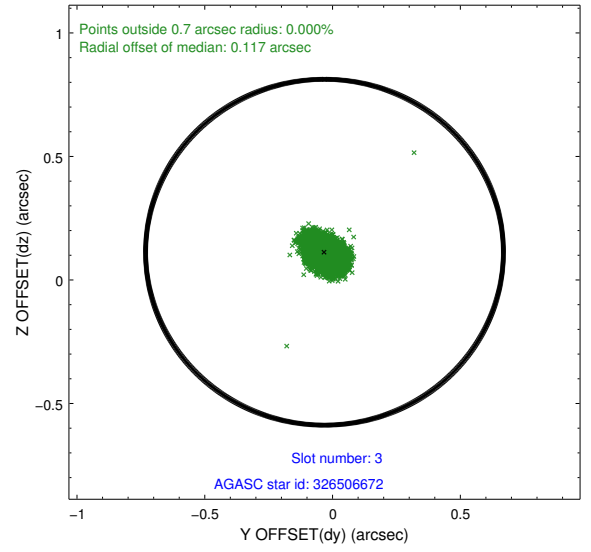
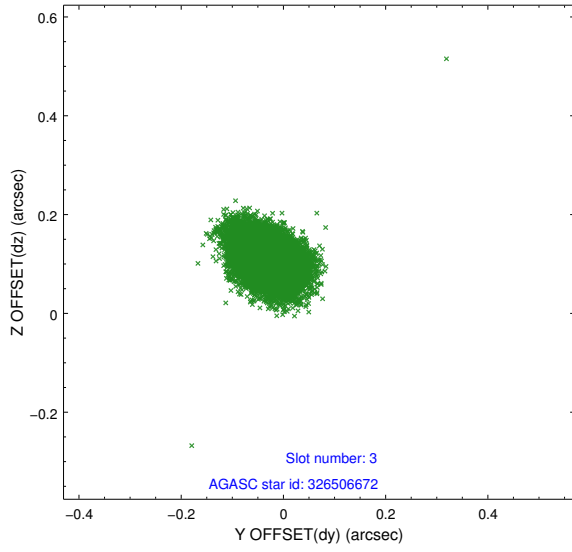


Slot Statistics

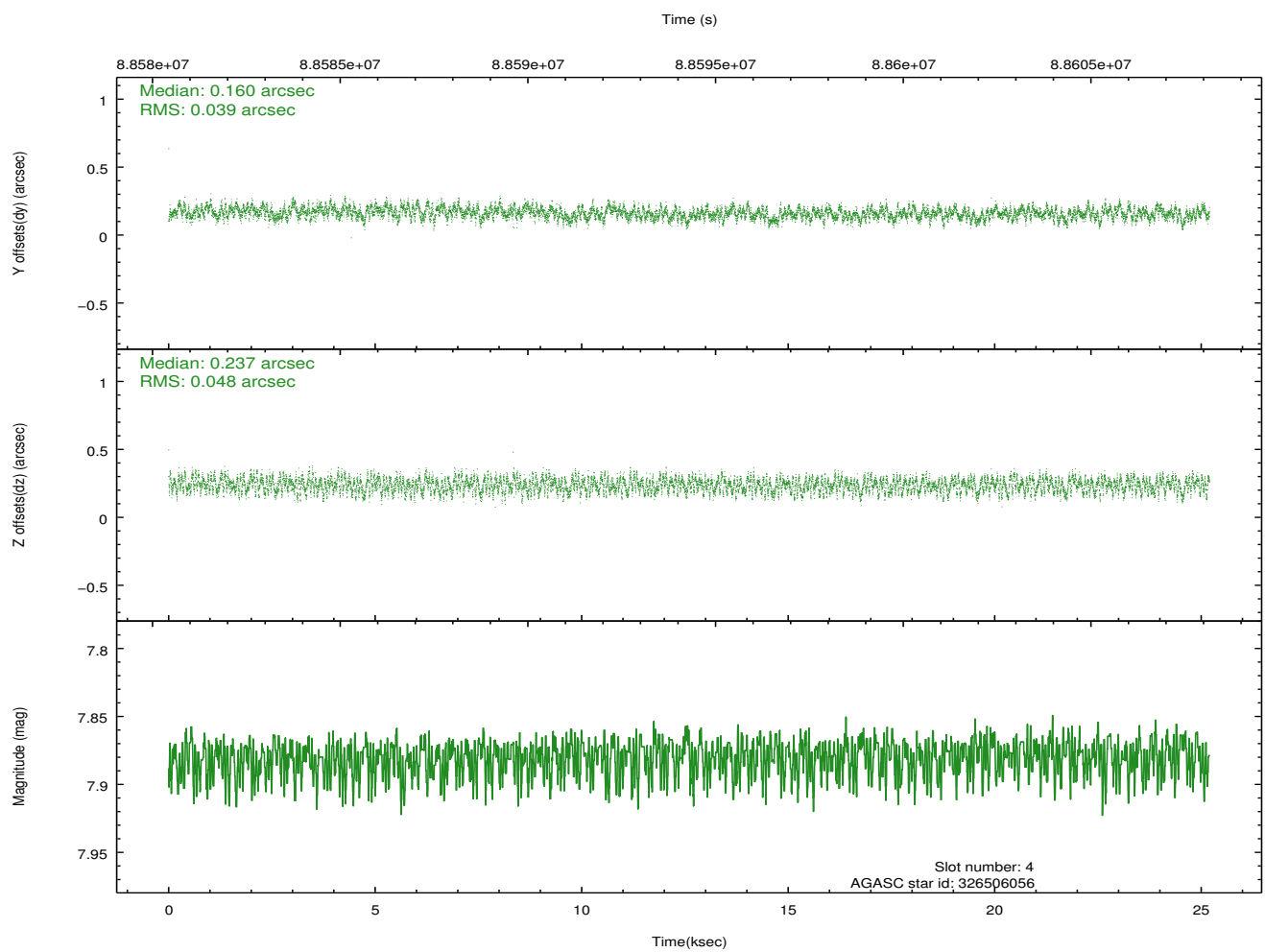
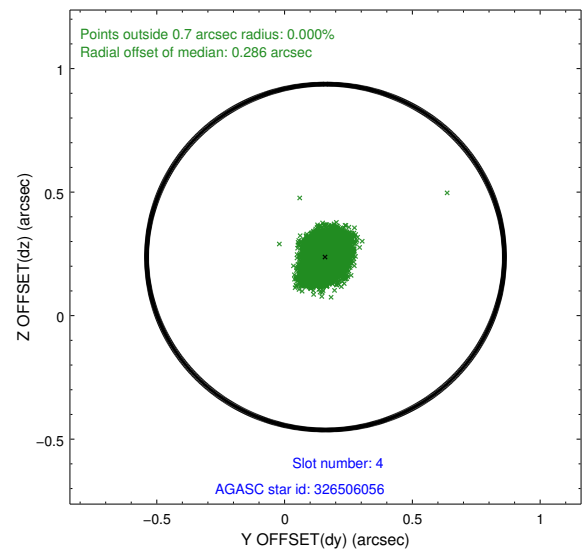
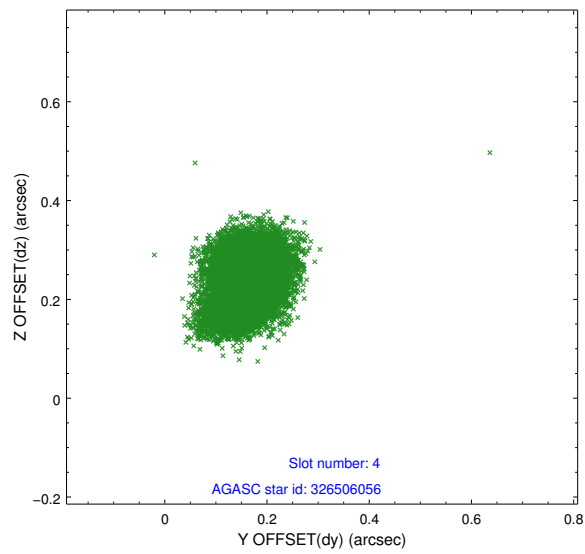
slot	status	id	mag	n_pts	med_dy	med_dz	dr1	dr2	ra	dec	mean_y	mean_z
0	FID	ACIS-I-2	7.17	6146	-0.048	-0.054	0.011	0.019	0.000000	0.000000	-756.41	-993.71
1	FID	ACIS-I-4	7.15	6145	-0.036	0.050	0.012	0.026	0.000000	0.000000	2157.55	912.45
2	FID	ACIS-I-5	7.22	6147	-0.015	0.074	0.012	0.021	0.000000	0.000000	-1809.66	909.44
3	GUIDE	326506672	7.79	12292	-0.032	0.112	0.052	0.084	133.078821	36.266205	1058.63	-1246.67
4	GUIDE	326506056	7.88	12289	0.160	0.237	0.067	0.106	133.086548	35.461076	-1681.79	-2190.53
5	GUIDE	326370448	8.14	12292	0.015	-0.441	0.078	0.119	131.848080	36.456421	595.01	2356.02
6	GUIDE	326508760	9.12	12288	-0.193	-0.097	0.078	0.125	132.387450	36.829326	2353.02	1289.54
7	GUIDE	326512576	9.58	12289	0.052	0.193	0.090	0.153	133.179356	36.155909	775.63	-1649.83

2.4 Star Slots

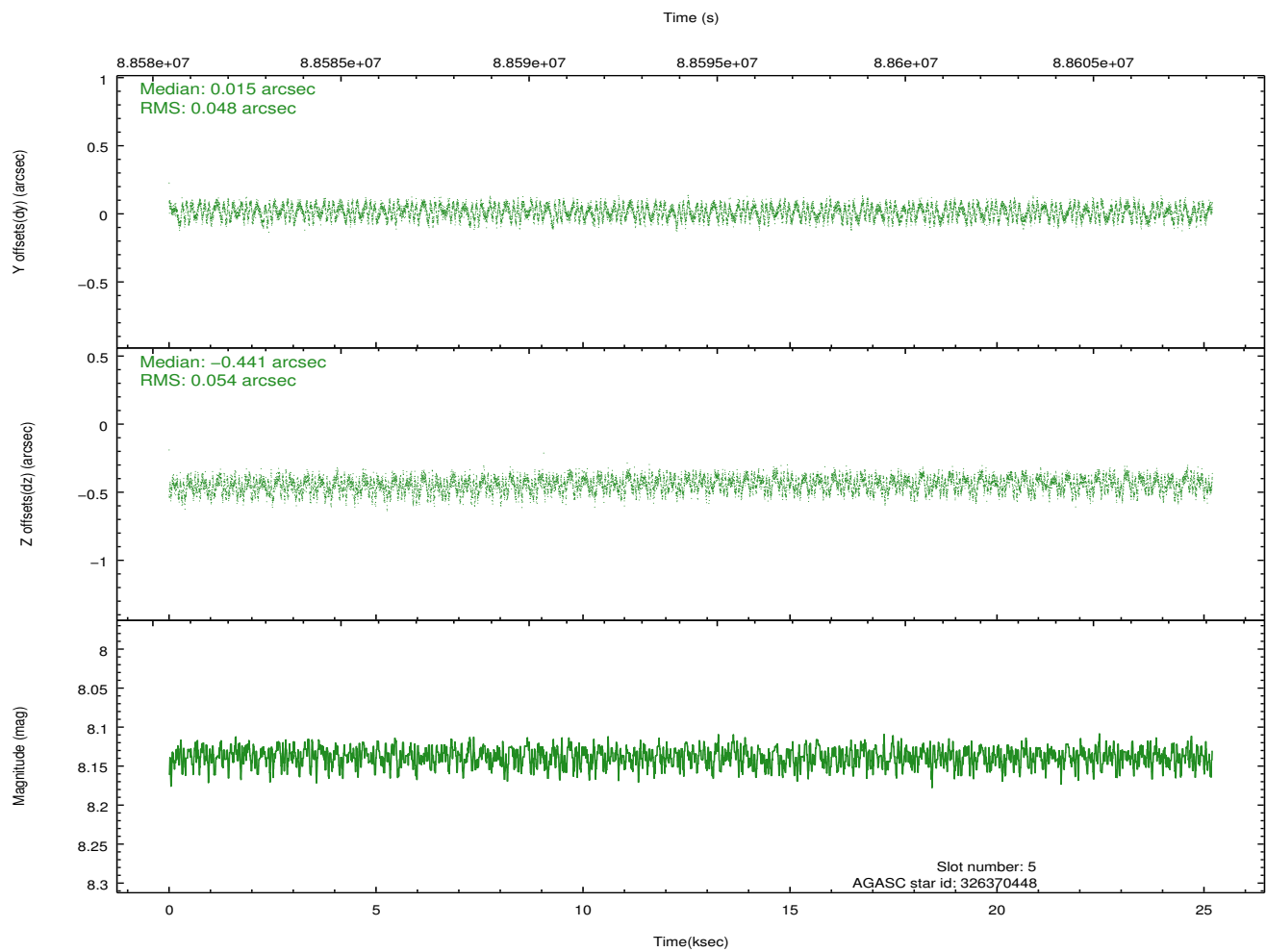
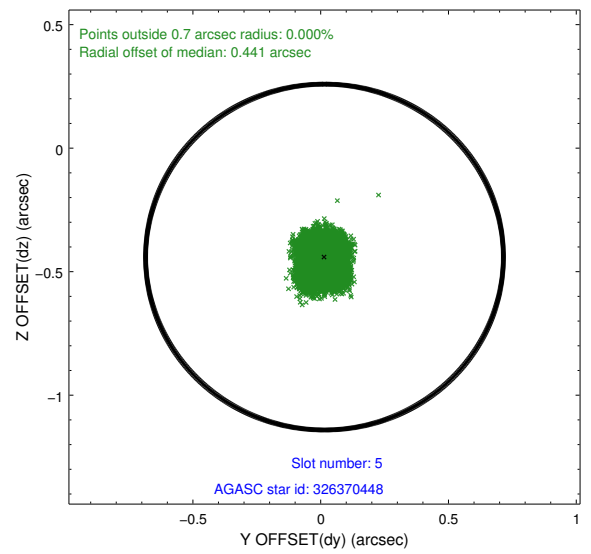
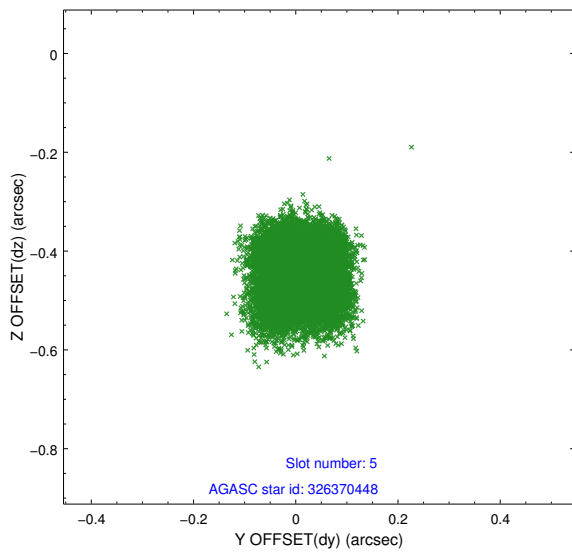
2.4.1 Slot 3



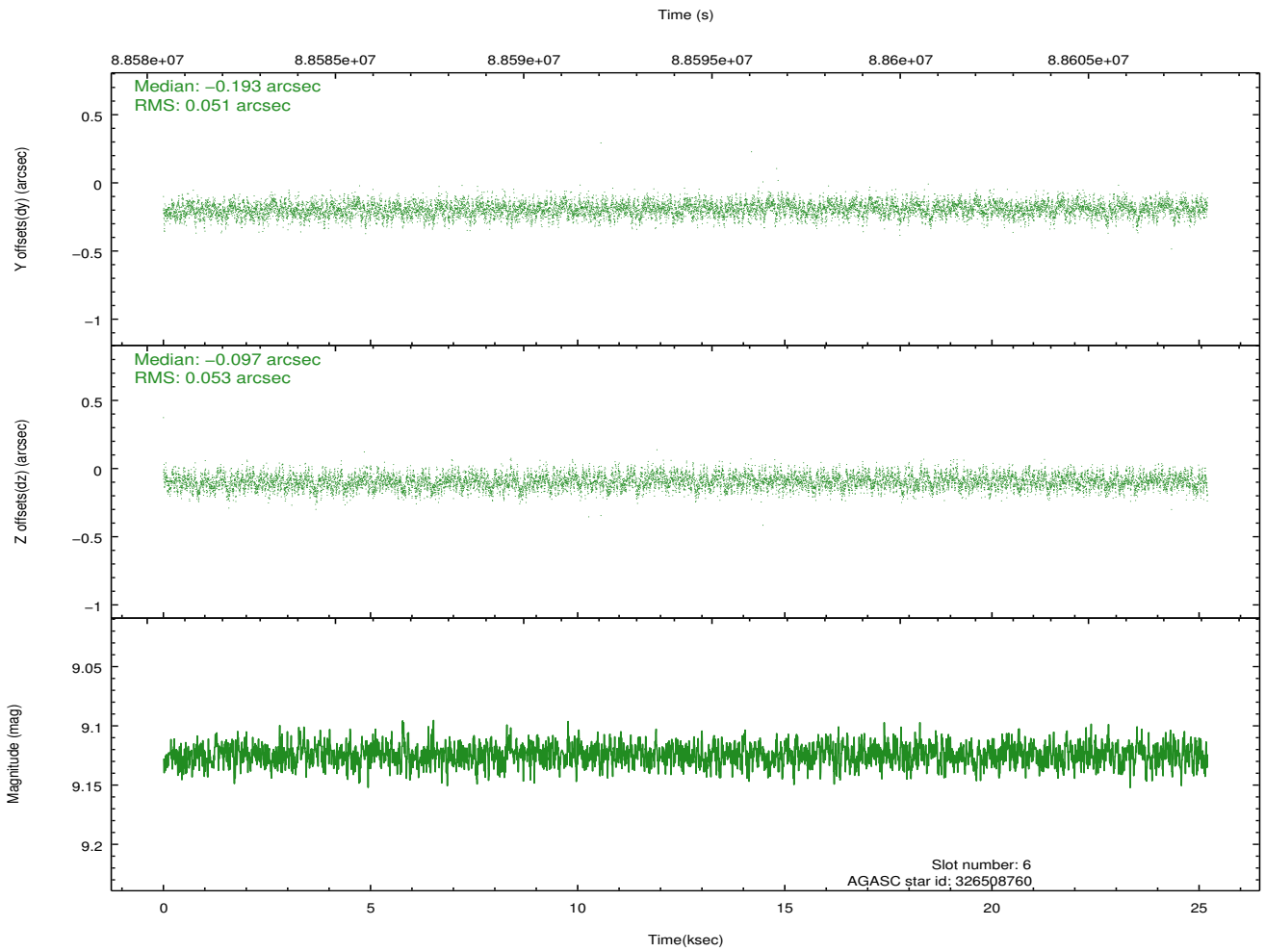
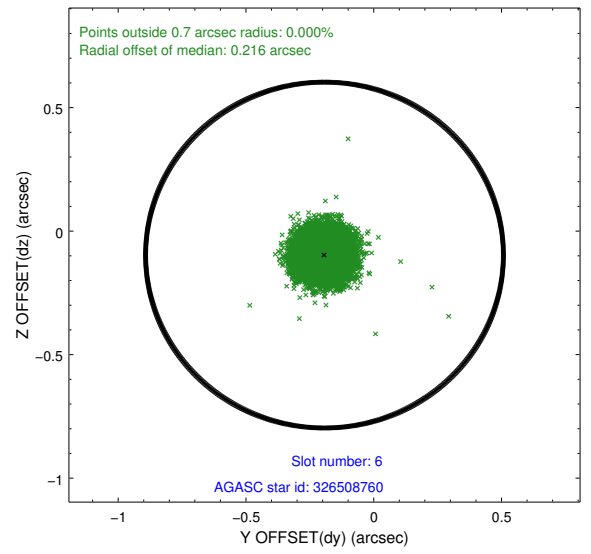
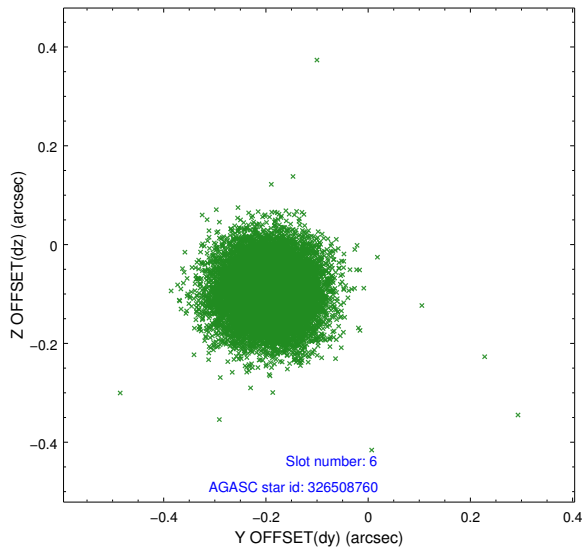
2.4.2 Slot 4



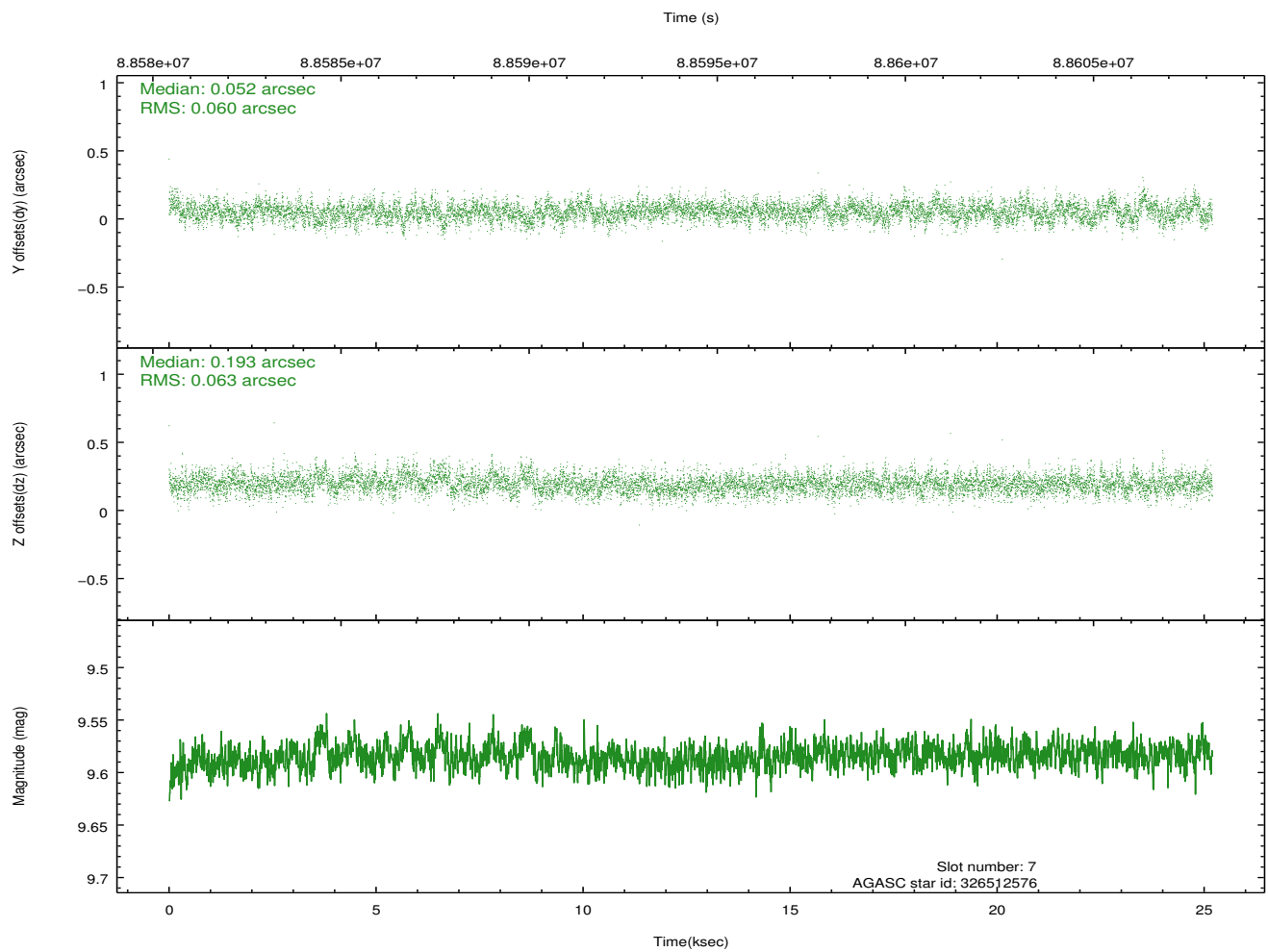
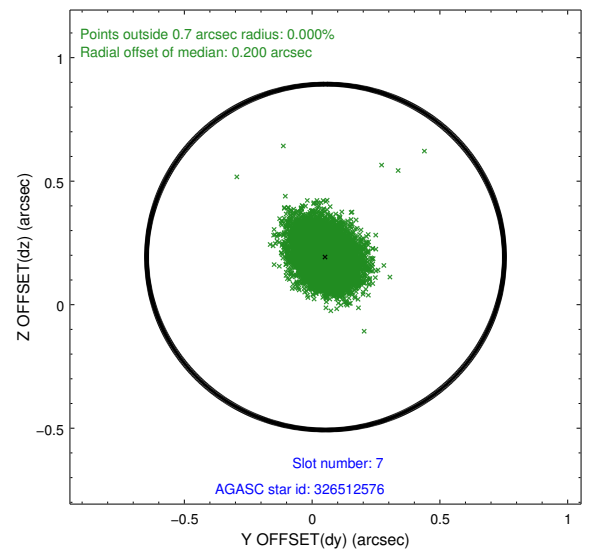
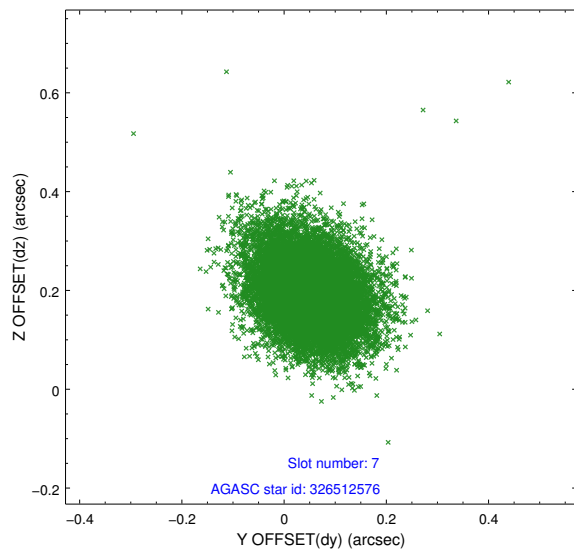
2.4.3 Slot 5



2.4.4 Slot 6

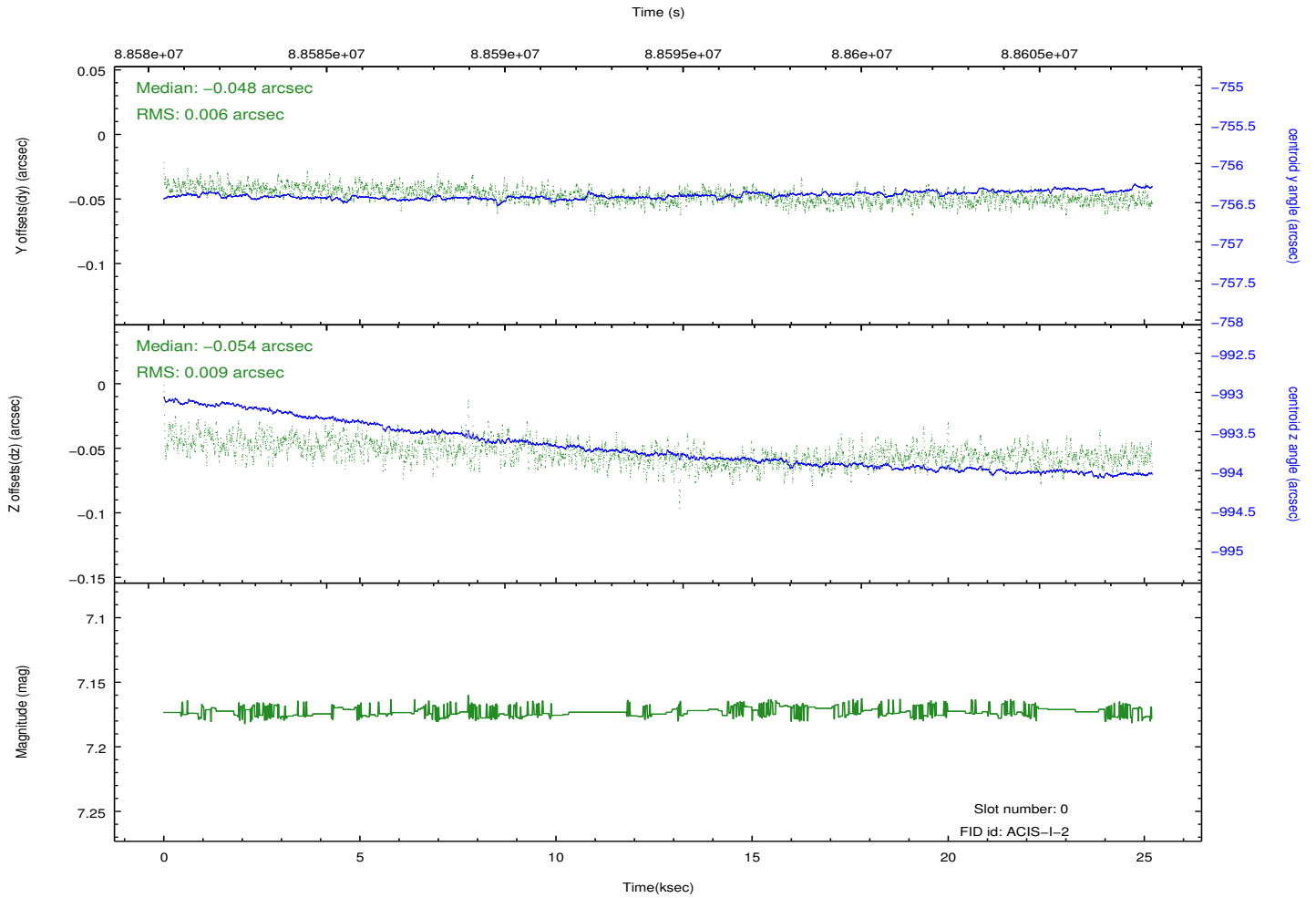
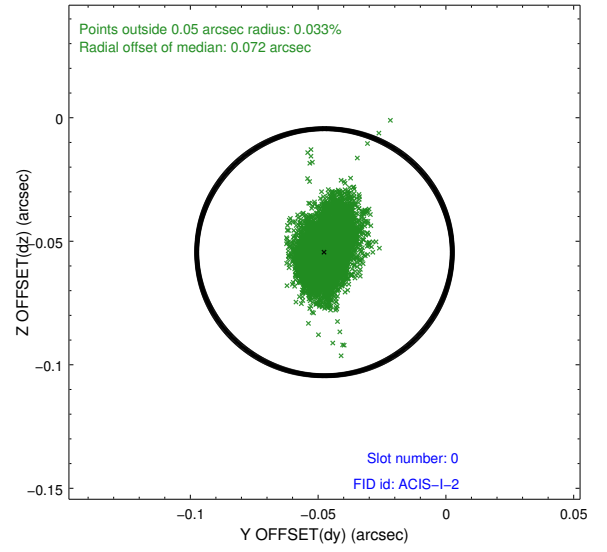
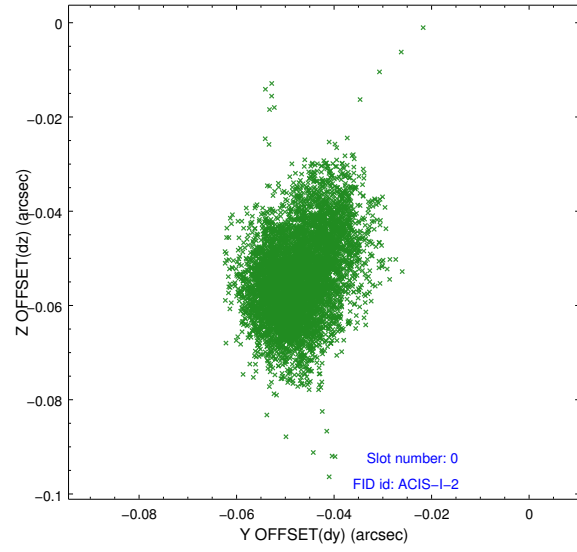


2.4.5 Slot 7

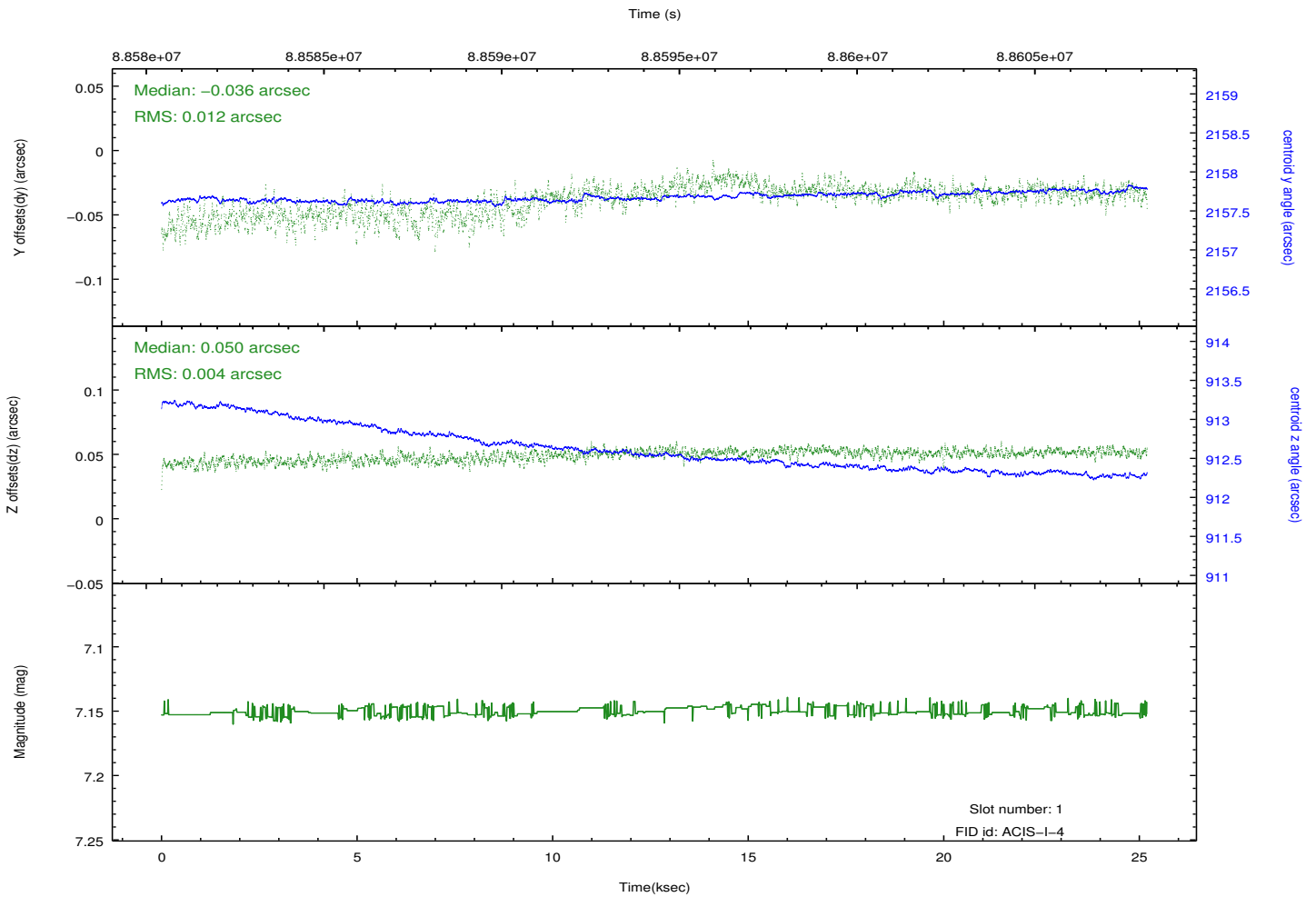
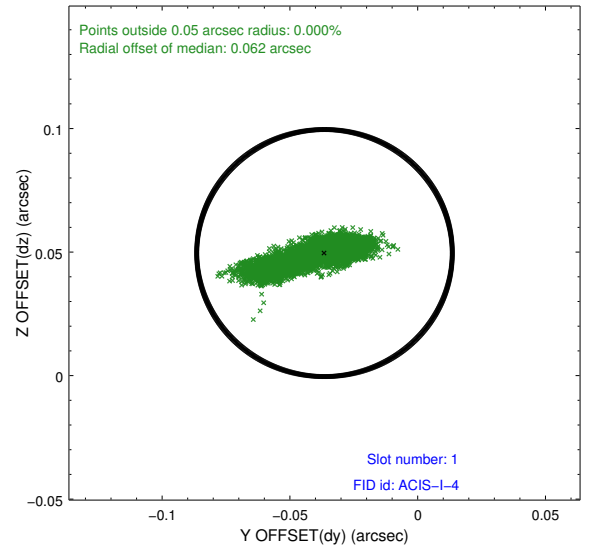
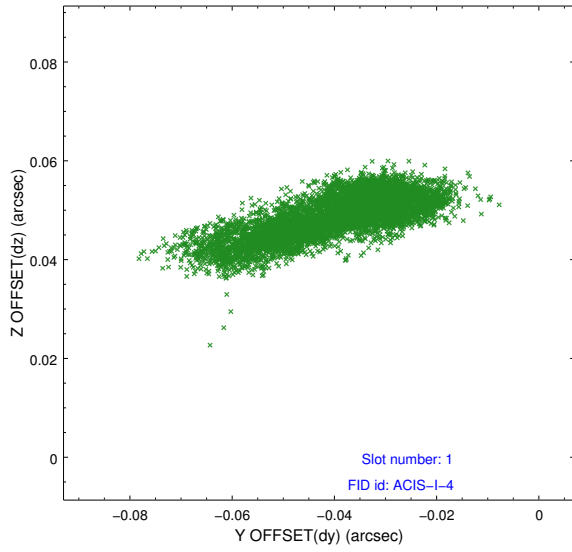


2.5 FID Slots

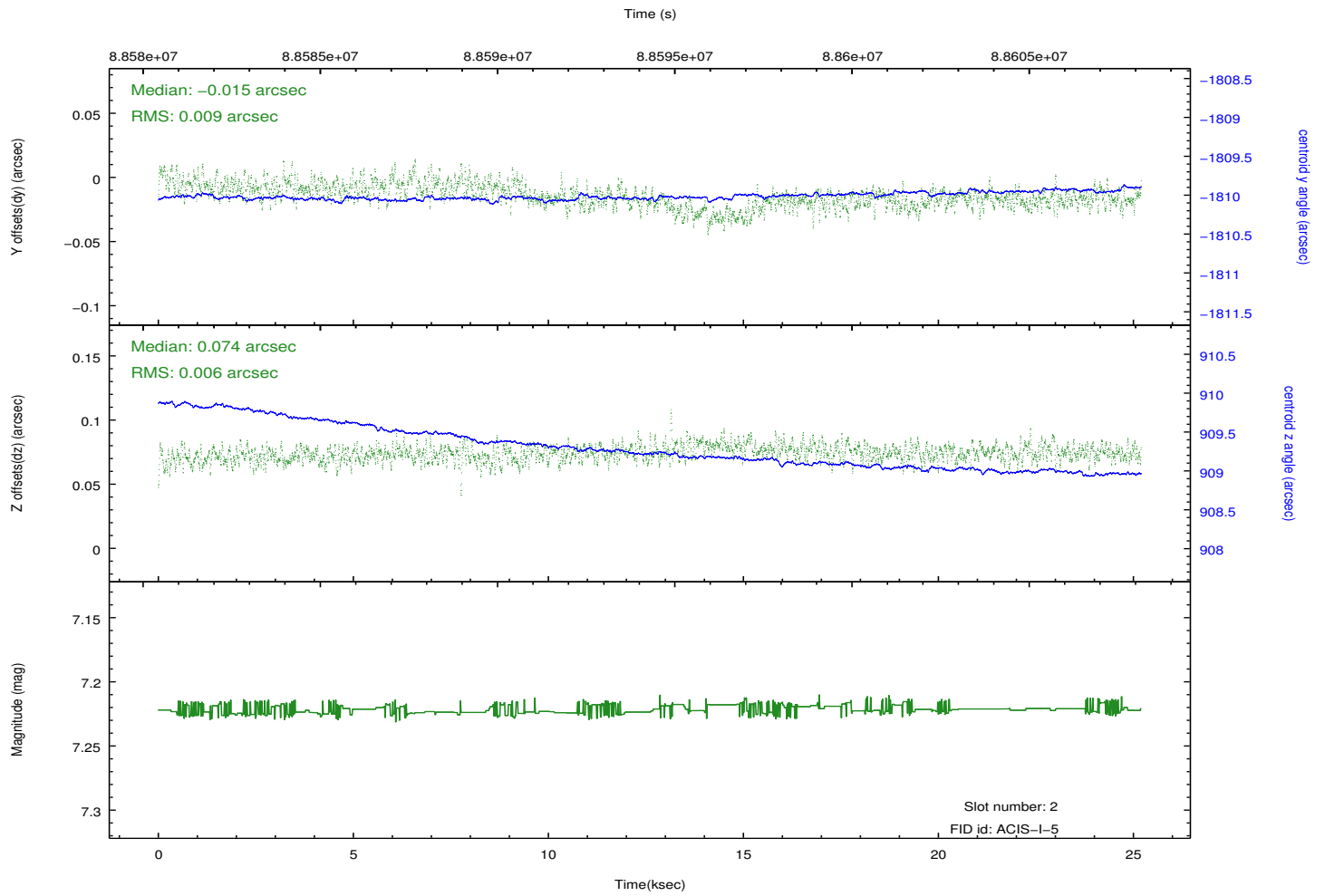
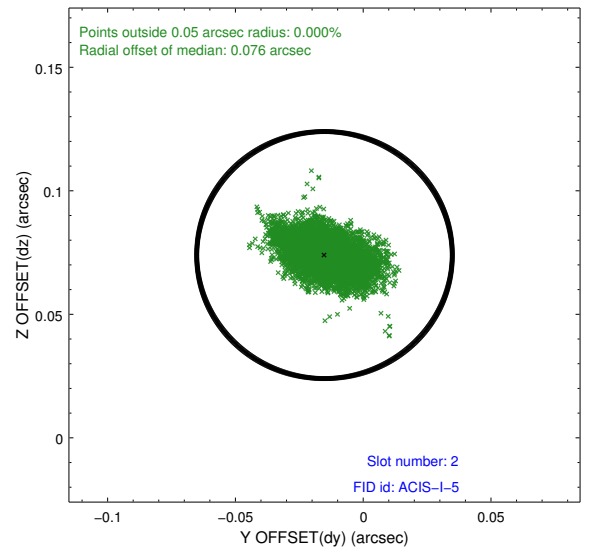
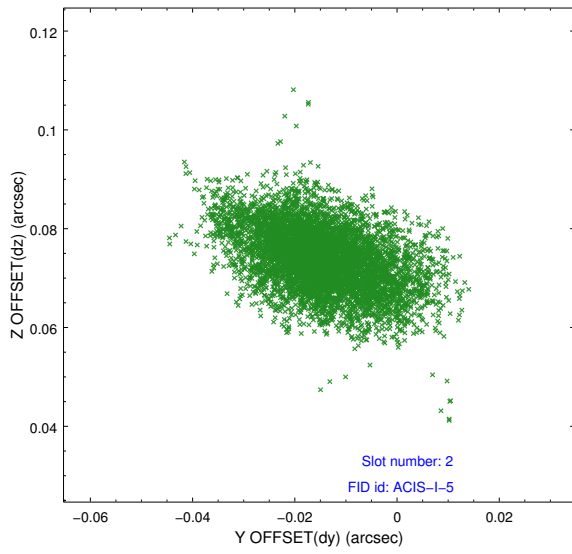
2.5.1 Slot 0



2.5.2 Slot 1



2.5.3 Slot 2



A Summary

A.1 Status

V&V Scientist	Jen Lauer
V&V Date (YYYY-MM-DD)	2012.09.10
V&V Edition	1
V&V Disposition and Status	OK
V&V Charge Time	25.19

A.2 Comments