

V&V Reference Report

L2 ASCDS Version : 8.4.5

Observation 1669 - L2 Version 3
Chandra X-Ray Center

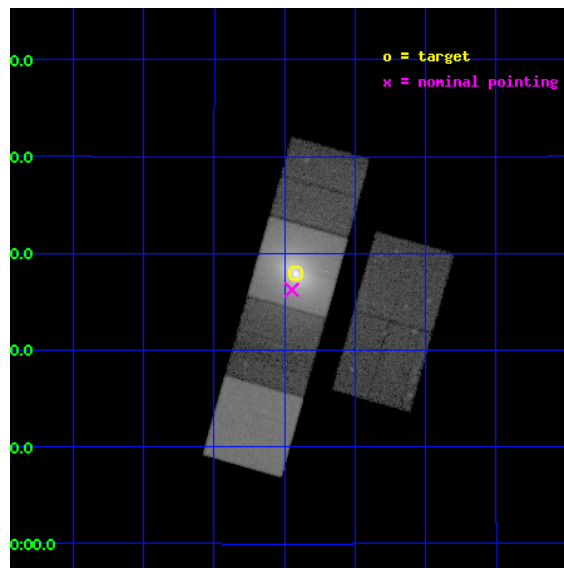
L2 Processing Date : Sep 7 2012

Contents

1	Front	2
2	OBI	3
2.1	OBI	3
2.1.1	Images	3
2.1.2	Bias	3
2.1.3	Parameters	4
2.1.4	Events	4
2.2	Compared Parameters	5
2.3	Aspect	6
2.4	Star Slots	9
2.4.1	Slot 3	9
2.4.2	Slot 4	10
2.4.3	Slot 5	11
2.4.4	Slot 6	12
2.4.5	Slot 7	13
2.5	FID Slots	14
2.5.1	Slot 0	14
2.5.2	Slot 1	15
2.5.3	Slot 2	16
A	Summary	17
A.1	Status	17
A.2	Comments	17

1 Front

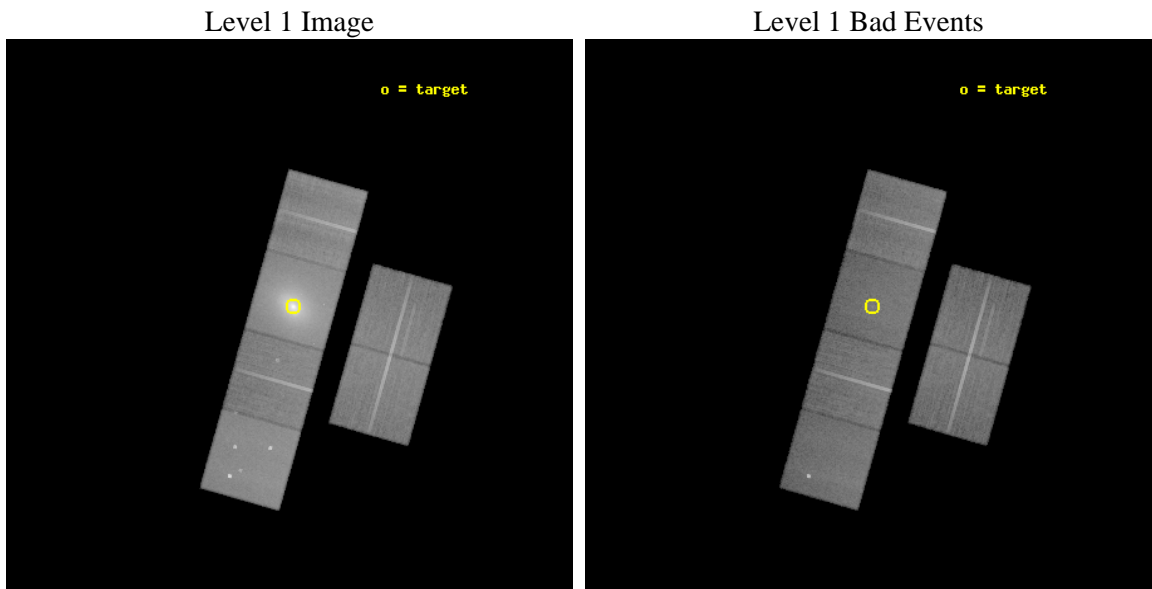
seq_num	800137	Sequence number
obs_id	1669	Observation id
title	CHANDRA OBSERVATIONS OF THE COOLING FLOW CLUSTER A478	Proposal tit
observer	Dr. Stephen Murray	Principal investigator
object	A 478	Source name
dtycycle	0	
cycle	P	events from which exps? Prim/Second/Both
ra_targ	63.355792	Observer's specified target RA [deg]
dec_targ	10.465847	Observer's specified target Dec [deg]
ra_nom	63.362085640935	Nominal RA [deg]
dec_nom	10.437266672153	Nominal Dec [deg]
roll_nom	285.77360700996	Nominal Roll [deg]
revision	3	Processing version of data
ontime	42937.600039974	Sum of GTIs [s]
livetime	42393.898294349	Livetime [s]
ontime2	42934.359079719	Sum of GTIs [s]
ontime3	42934.359059811	Sum of GTIs [s]
ontime5	42937.600039974	Sum of GTIs [s]
ontime6	42937.600039974	Sum of GTIs [s]
ontime7	42937.600039974	Sum of GTIs [s]
ontime8	42937.600039974	Sum of GTIs [s]
l2events	814751	Number of level 2 events



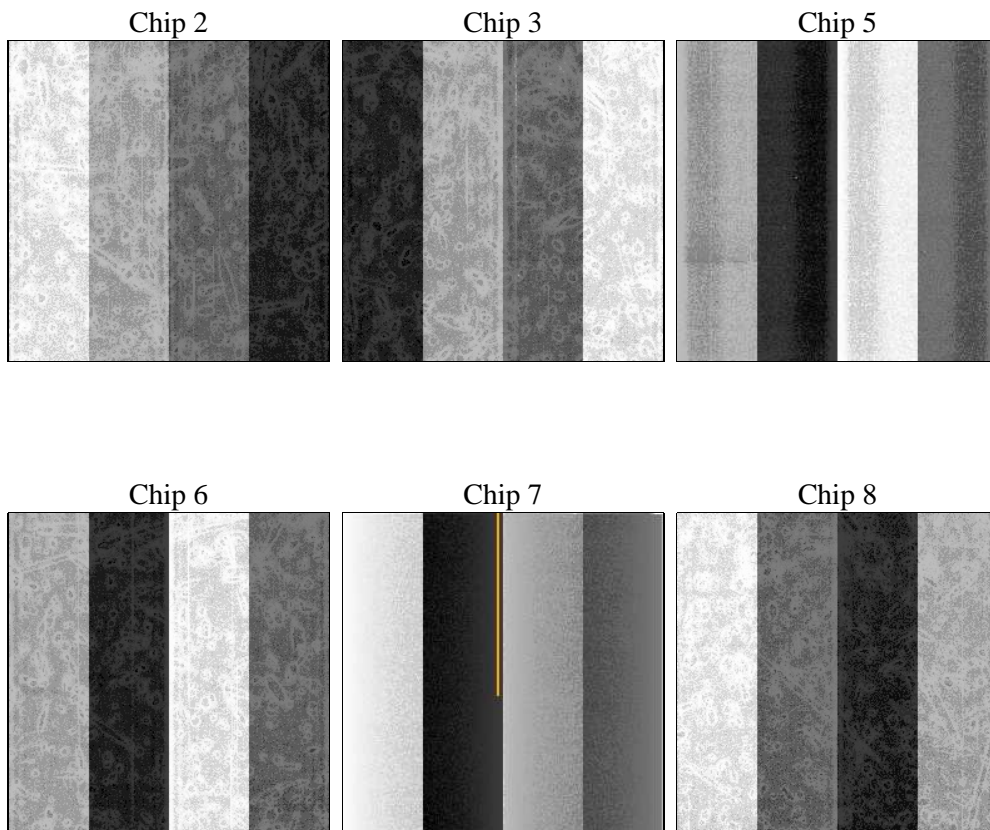
2 OBI

2.1 OBI

2.1.1 Images



2.1.2 Bias



2.1.3 Parameters

obi_num	0	Obi number	sched_exp_time	43000.000000	[s] Scheduled observation exposure time
ascdsver	8.4.5	Processing system revision	ontime	42937.600039974	Sum of GTIs [s]
caldbver	4.5.1.1	 	ontime2	42934.359079719	Sum of GTIs [s]
date	2012-09-07T06:42:07	Date and time of file creation	ontime3	42934.359059811	Sum of GTIs [s]
revision	3	Processing version of data	ontime5	42937.600039974	Sum of GTIs [s]
			ontime6	42937.600039974	Sum of GTIs [s]
			ontime7	42937.600039974	Sum of GTIs [s]
			ontime8	42937.600039974	Sum of GTIs [s]
			l1events	2219893	Number of level 1 events

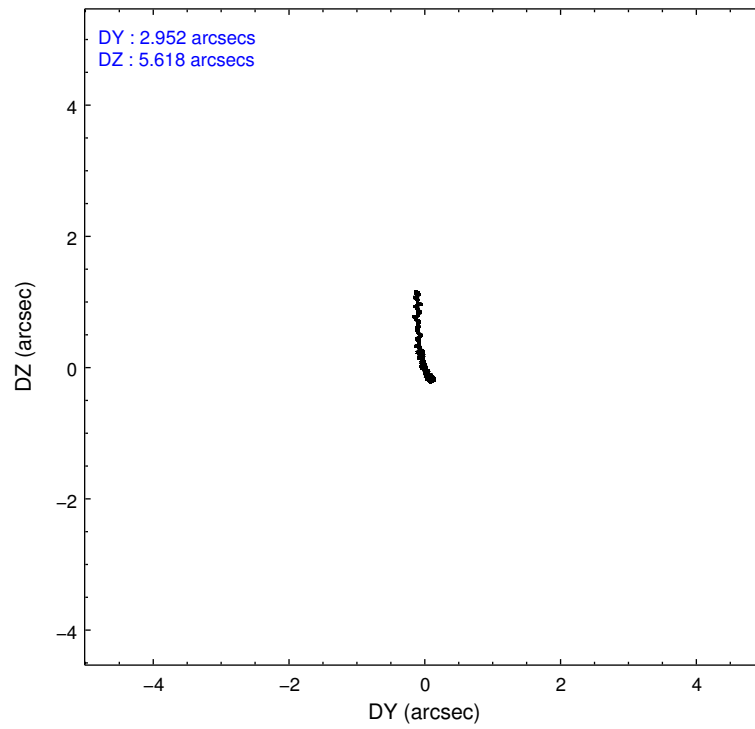
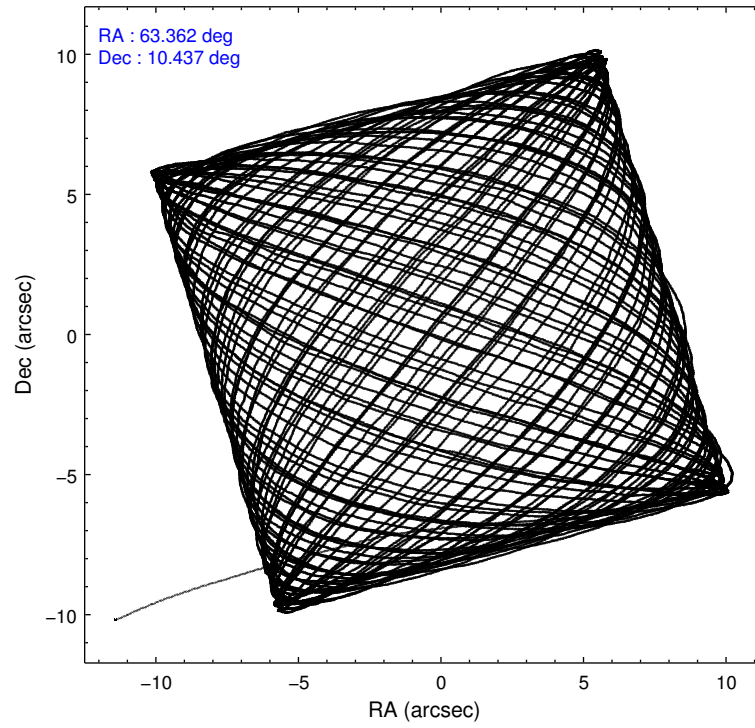
2.1.4 Events

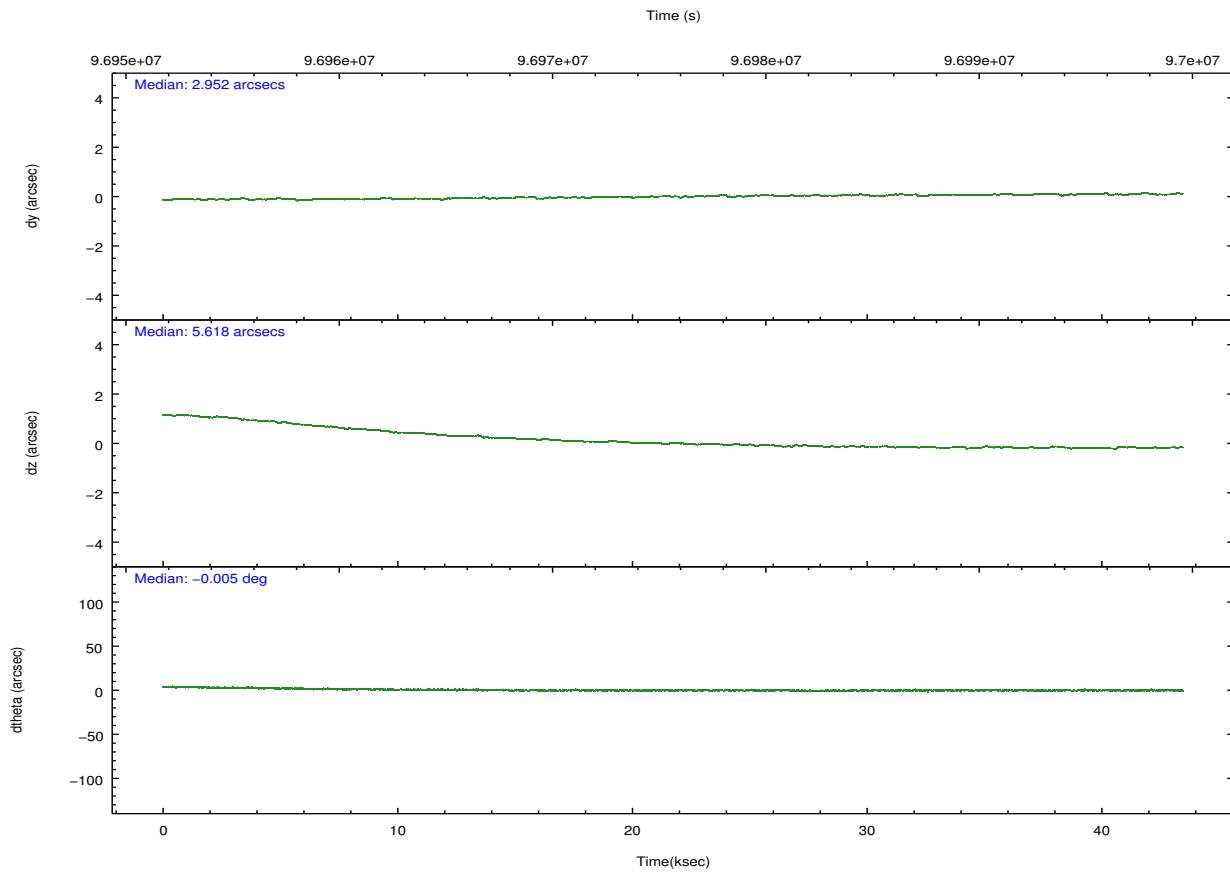
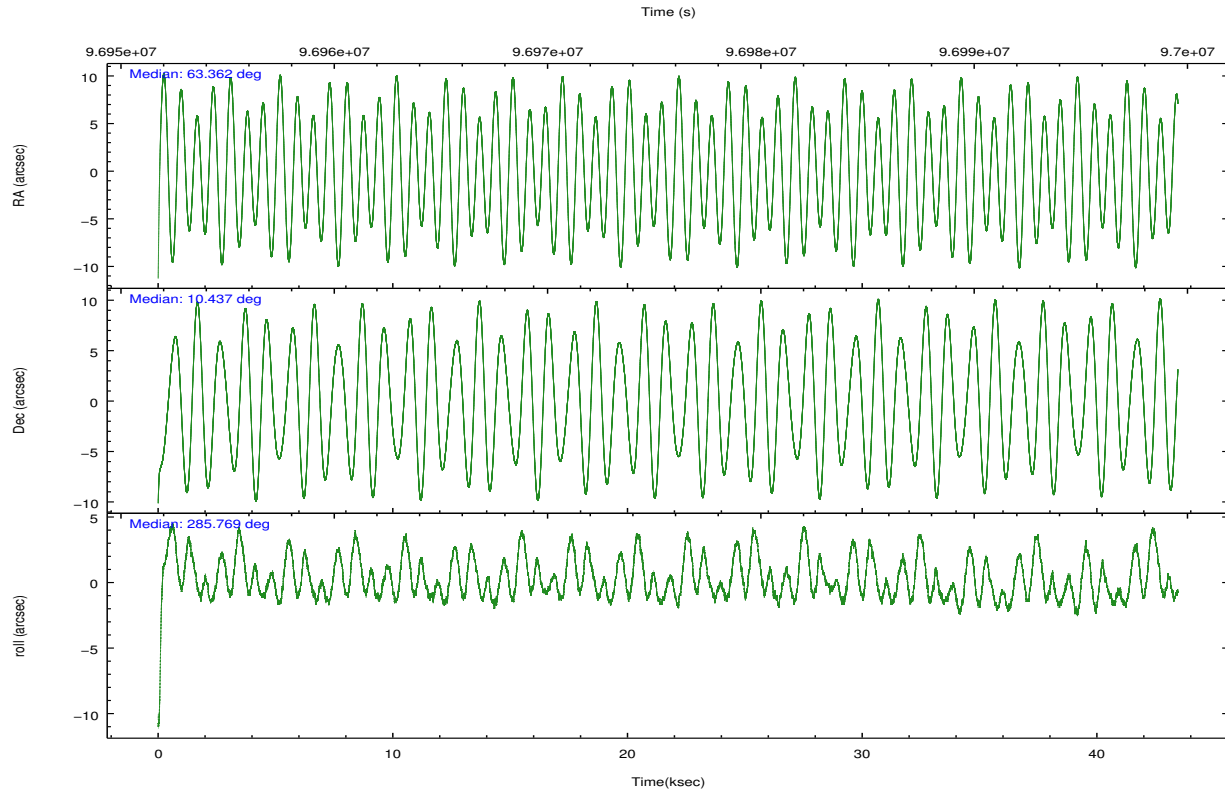
	ccd 2	ccd 3	ccd 5	ccd 6	ccd 7	ccd 8		ccd 2	ccd 3	ccd 5	ccd 6	ccd 7	ccd 8
level 1 events	263279	253531	364585	269001	736283	333214	grade 0 events	14637	14365	22423	21230	126427	29549
rejected events	230862	221769	196235	227345	190099	251739		5%	5%	6%	7%	17%	8%
rejected %	87%	87%	53%	84%	25%	75%	grade 1 events	126	133	527	141	442	247
								0%	0%	0%	0%	0%	0%
							grade 2 events	6775	6436	49424	7563	134549	15619
								2%	2%	13%	2%	18%	4%
							grade 3 events	2792	2842	6970	3286	60358	9447
								1%	1%	1%	1%	8%	2%
							grade 4 events	2852	2809	6494	3194	60508	8824
								1%	1%	1%	1%	8%	2%
							grade 5 events	8874	9512	28916	10733	32916	13377
								3%	3%	7%	3%	4%	4%
							grade 6 events	5362	5313	83048	6385	164385	18039
								2%	2%	22%	2%	22%	5%
							grade 7 events	221861	212121	166783	216469	156698	238112
								84%	83%	45%	80%	21%	71%

2.2 Compared Parameters

Parameter	Planned	Actual	Parameter	Planned	Actual
Instrument	ACIS	ACIS	Obspar format version number	7	7
Detector	ACIS-235678	ACIS-235678	Obspar file type	PREDICTED	ACTUAL
Grating	NONE	NONE	Obspar update status	NONE	UPDATED
Data mode	FAINT	FAINT	Number of optional ACIS chips dropped	0	0
Observation mode	POINTING	POINTING	On-chip summing requested	N	N
[deg] Pointing RA	63.342002	63.36208564093451	Subarray requested	NONE	NONE
[deg] Pointing Dec	10.456169	10.4372666721527	Alternating exposures requested	N	N
[deg] Pointing Roll	285.620617	285.7736070099608	[s] Primary exposure time	0.000000	3.2
[mm] SIM focus pos	-0.684267	-0.6828225247311905			
[mm] SIM defocus	0	0.001444936568705701			
[mm] SIM translation stage pos	-190.132523	-190.1425803651734			
[mm] SIM translation stage offset	0	0.01005778216563158			
[s] Observation start time (MET)	96954373.184000	96953283.00049999			
Observation start date	2001-01-27T03:45:09	2001-01-27T03:28:03			
[s] Observation end time (MET)	96997373.184000	96997667.039708			
Observation end date	2001-01-27T15:41:49	2001-01-27T15:47:47			
Read mode	TIMED	TIMED			

2.3 Aspect



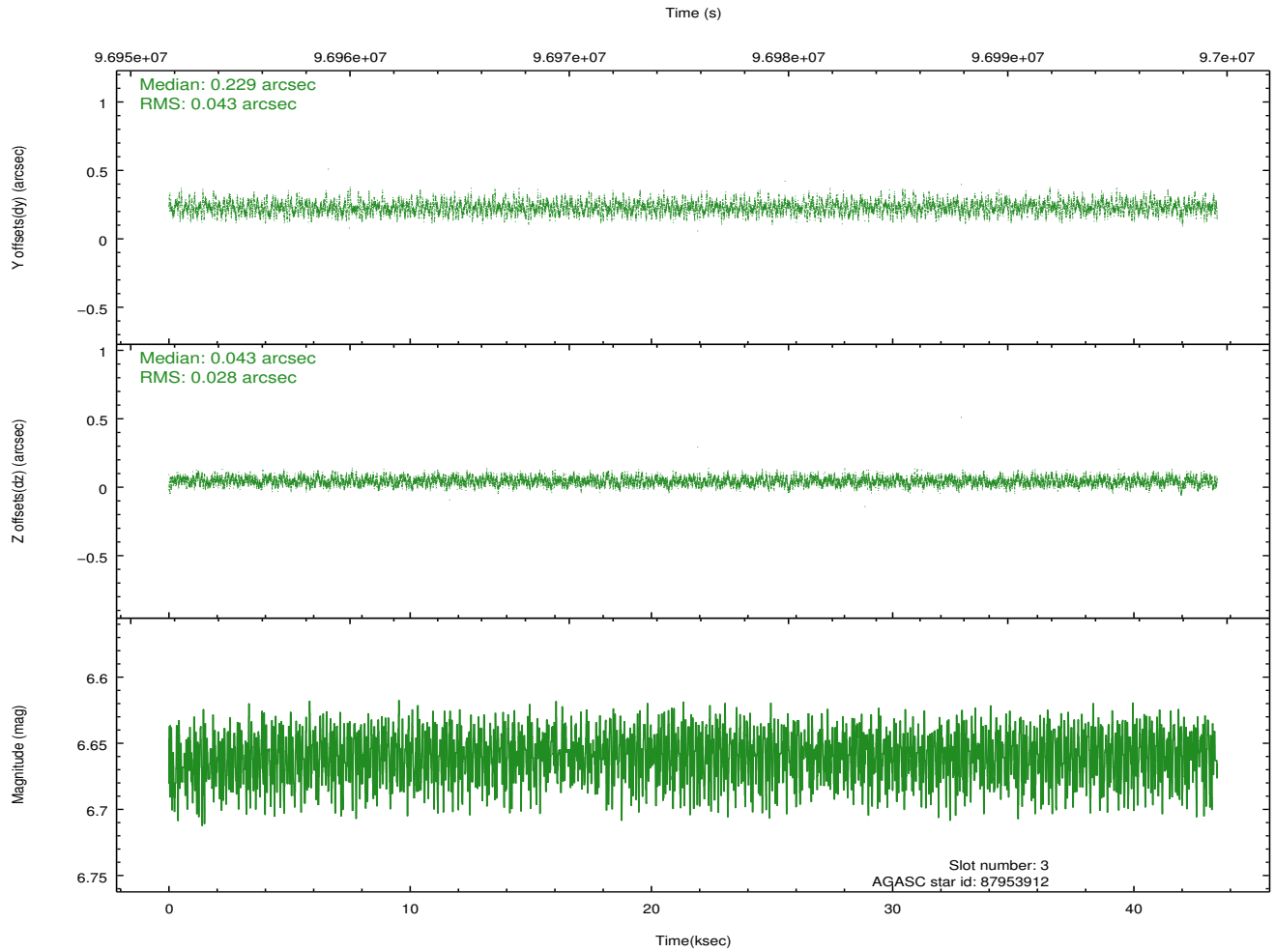
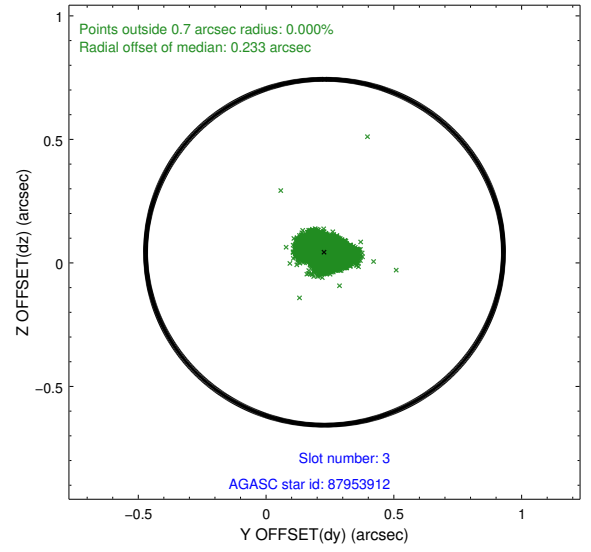
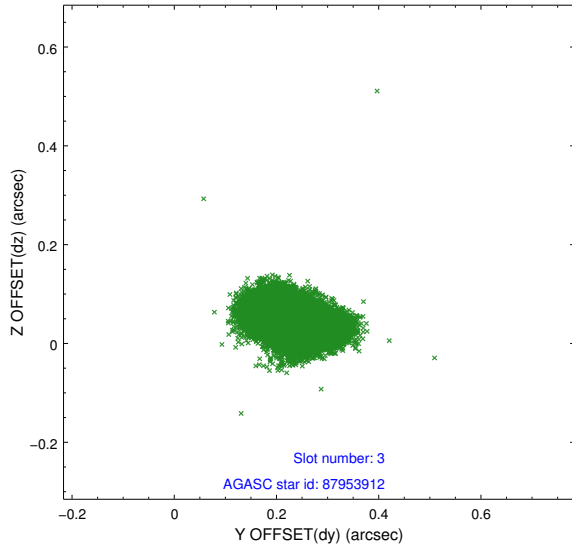


Slot Statistics

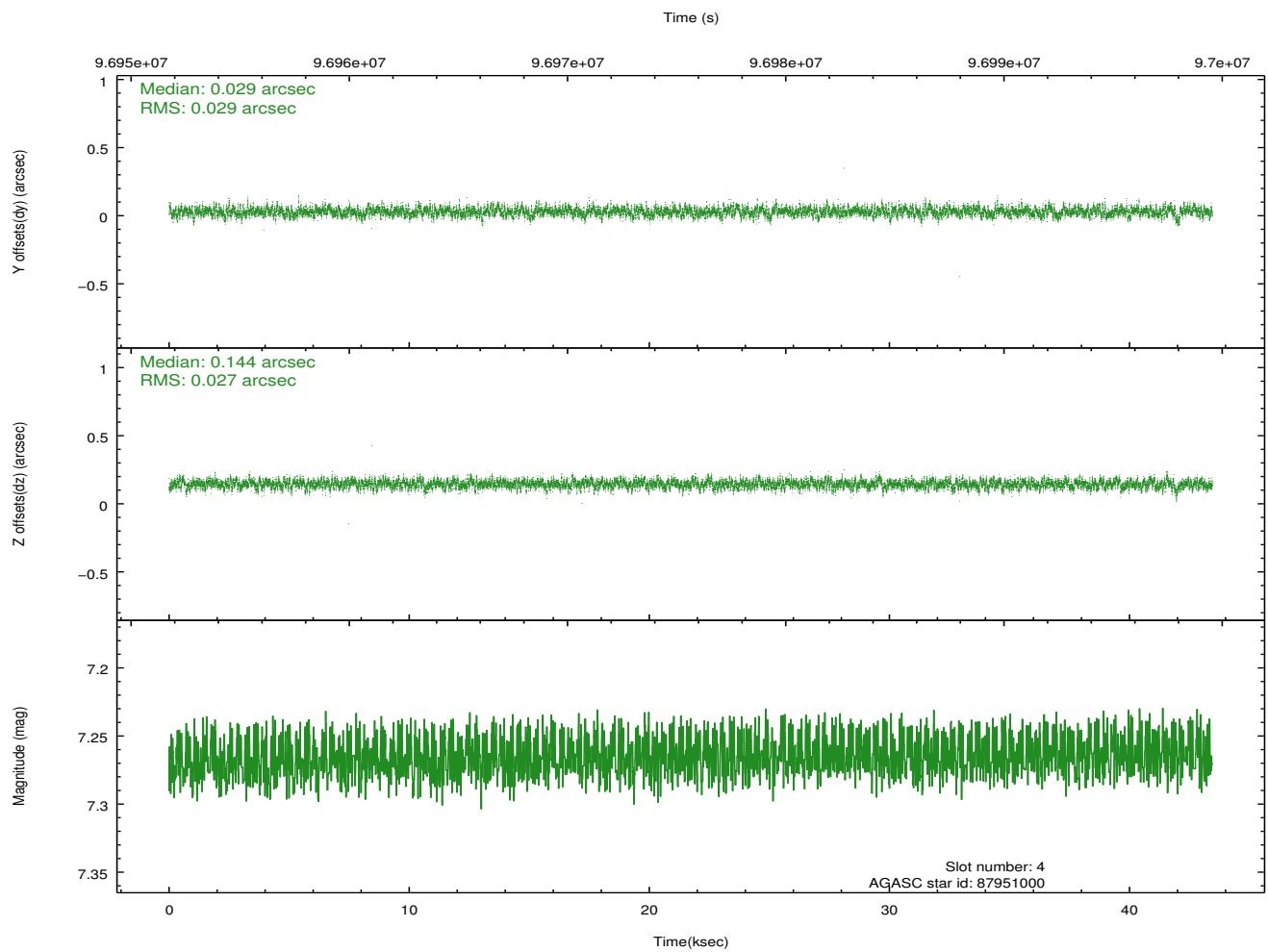
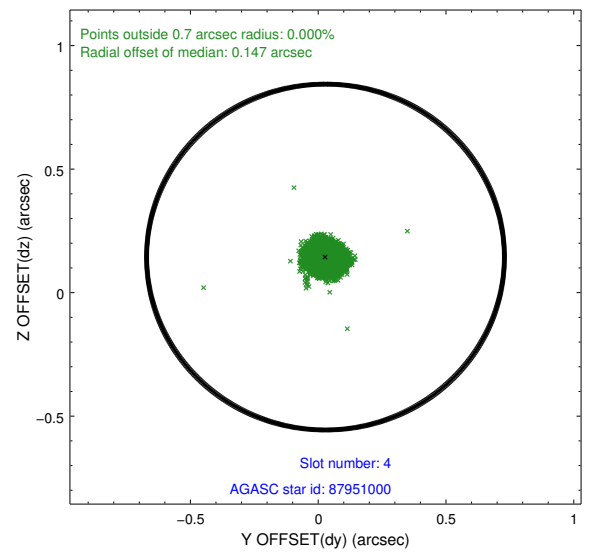
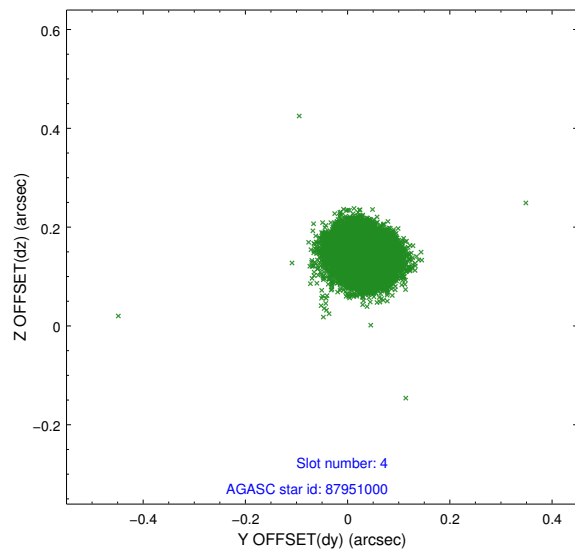
slot	status	id	mag	n_pts	med_dy	med_dz	dr1	dr2	ra	dec	mean_y	mean_z
0	FID	ACIS-S-2	7.12	10597	-0.024	0.009	0.008	0.016	0.000000	0.000000	-755.57	-1726.88
1	FID	ACIS-S-4	7.20	10595	-0.035	0.009	0.010	0.020	0.000000	0.000000	2157.65	181.66
2	FID	ACIS-S-5	7.24	10596	0.028	-0.009	0.009	0.015	0.000000	0.000000	-1808.40	175.23
3	GUIDE	87953912	6.66	21171	0.229	0.043	0.054	0.090	63.394036	10.212467	894.60	-58.95
4	GUIDE	87951000	7.27	21195	0.029	0.144	0.042	0.067	63.643091	10.701386	-564.13	1263.28
5	GUIDE	87955152	7.66	21194	-0.076	-0.009	0.050	0.080	63.504124	11.027236	-1826.22	1104.87
6	GUIDE	87950304	8.04	21191	0.011	0.016	0.066	0.104	63.753878	10.748130	-621.33	1685.84
7	GUIDE	87818344	8.36	21122	-0.195	-0.199	0.063	0.100	62.599114	10.854229	-2090.71	-2143.57

2.4 Star Slots

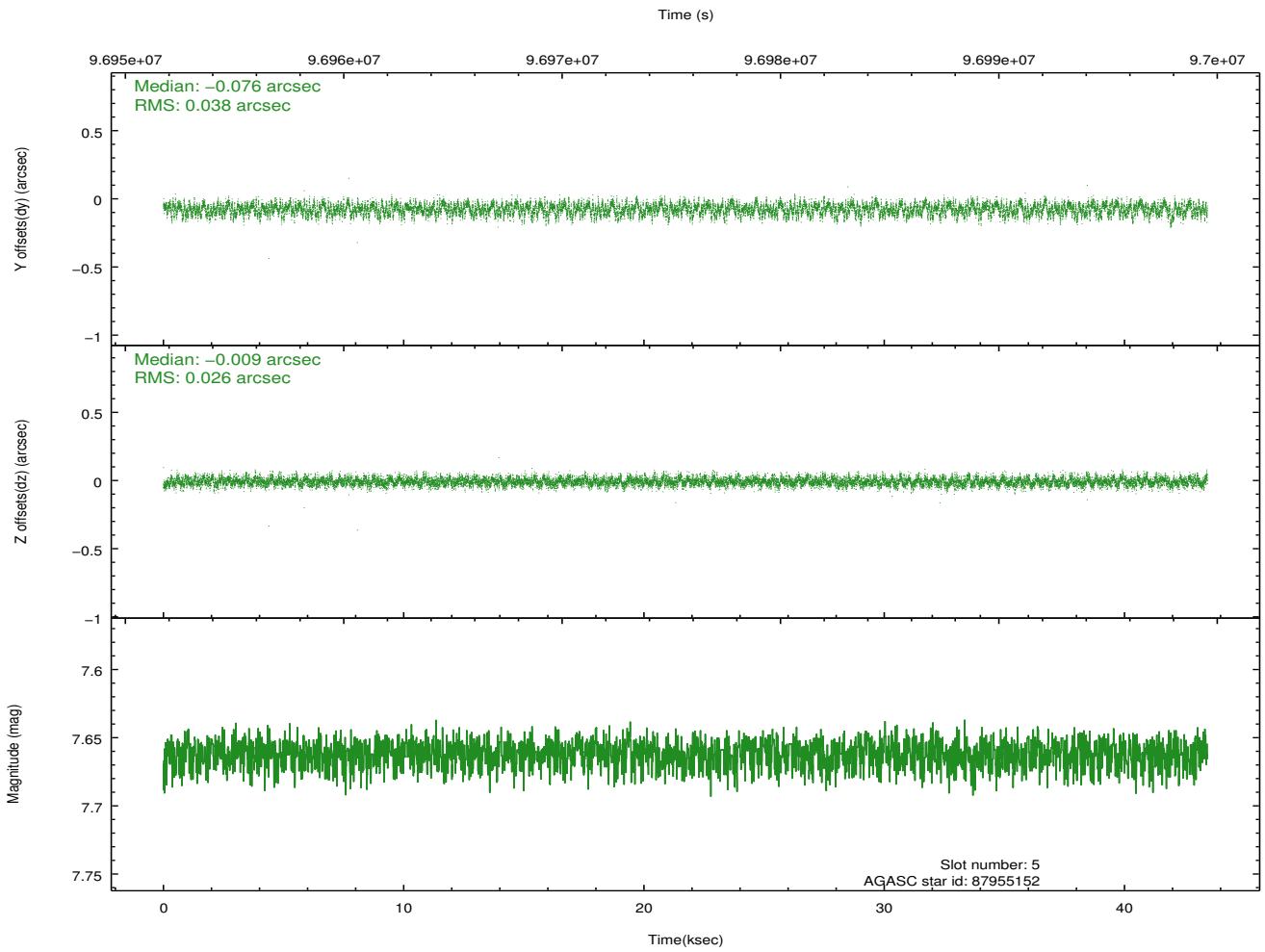
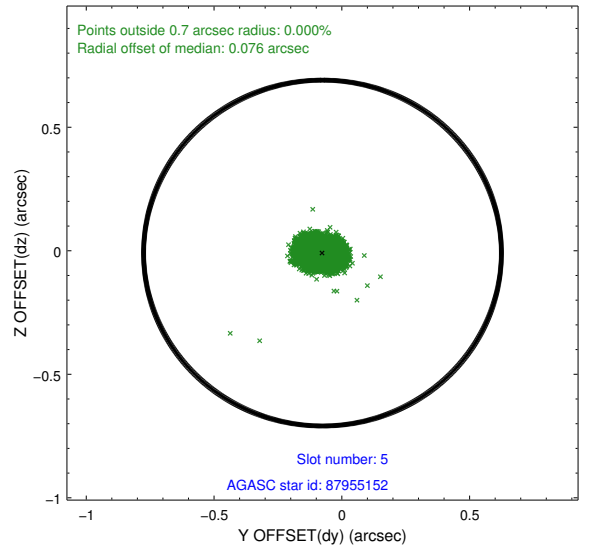
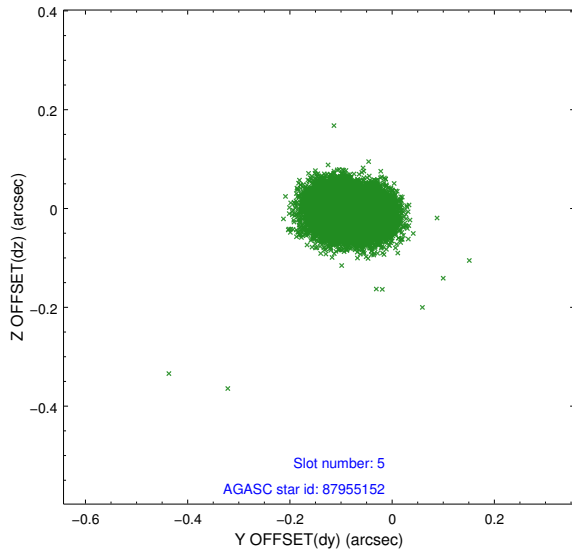
2.4.1 Slot 3



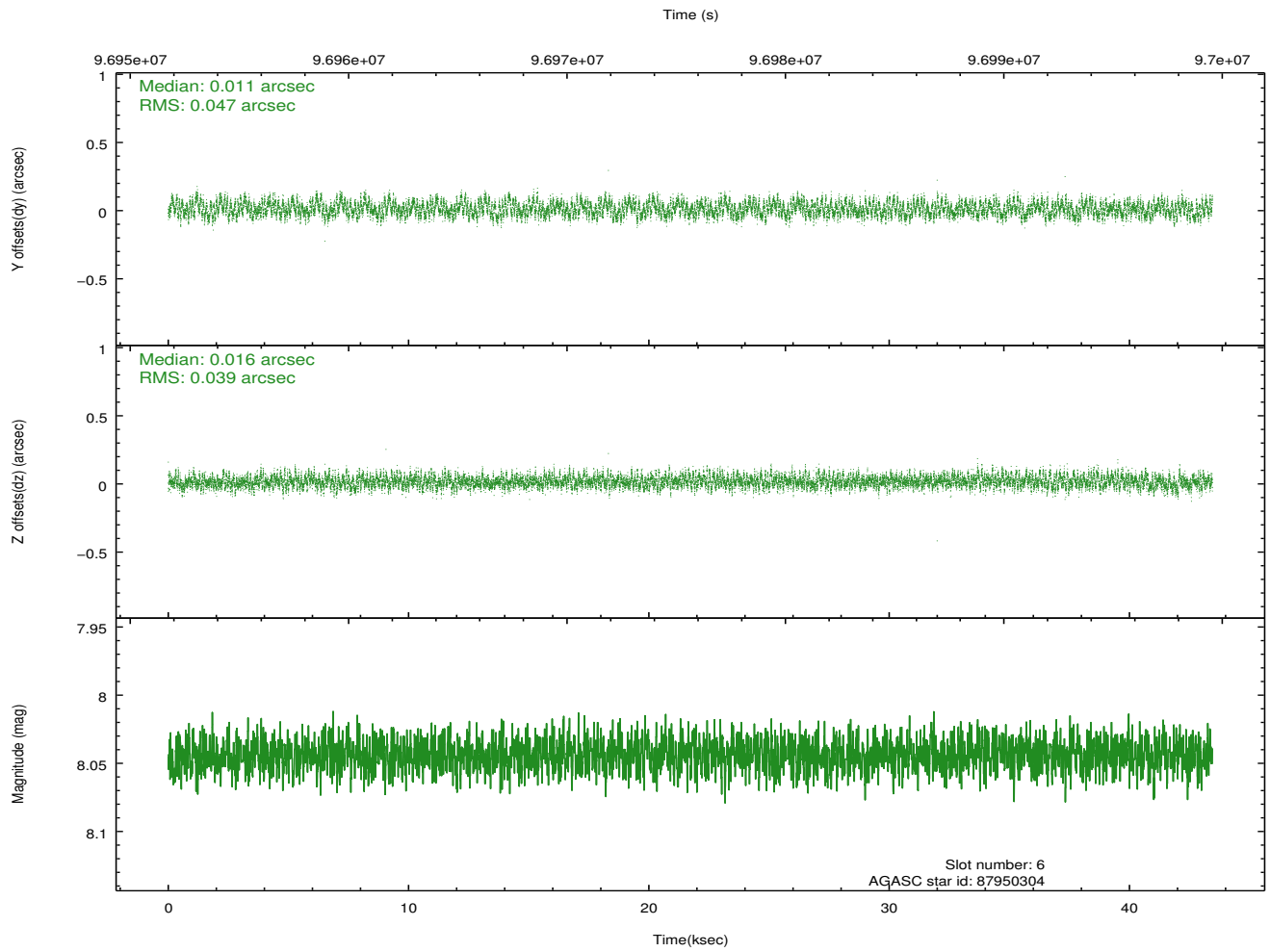
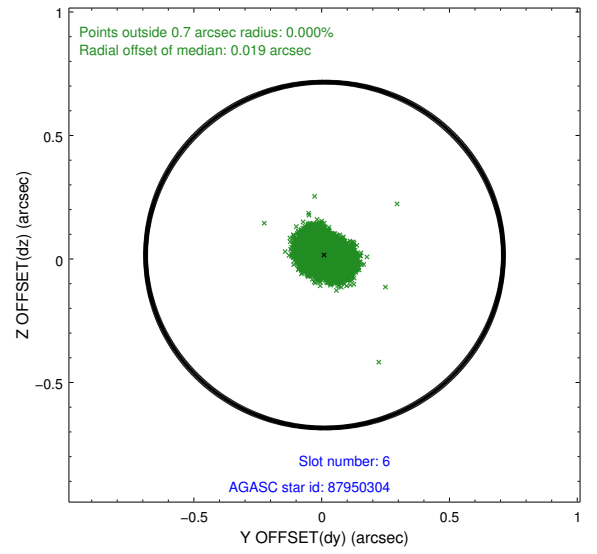
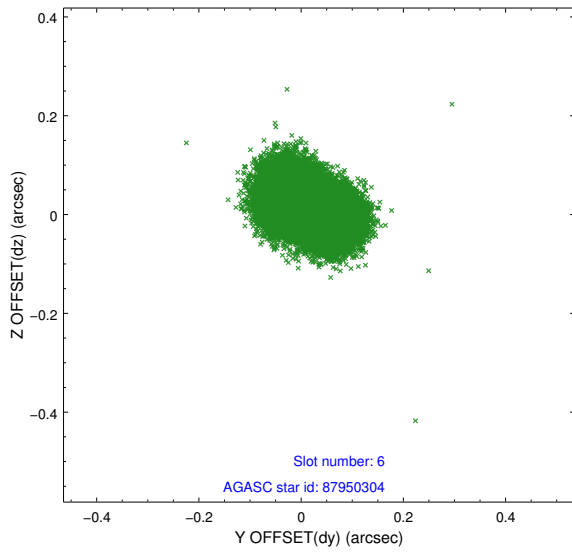
2.4.2 Slot 4



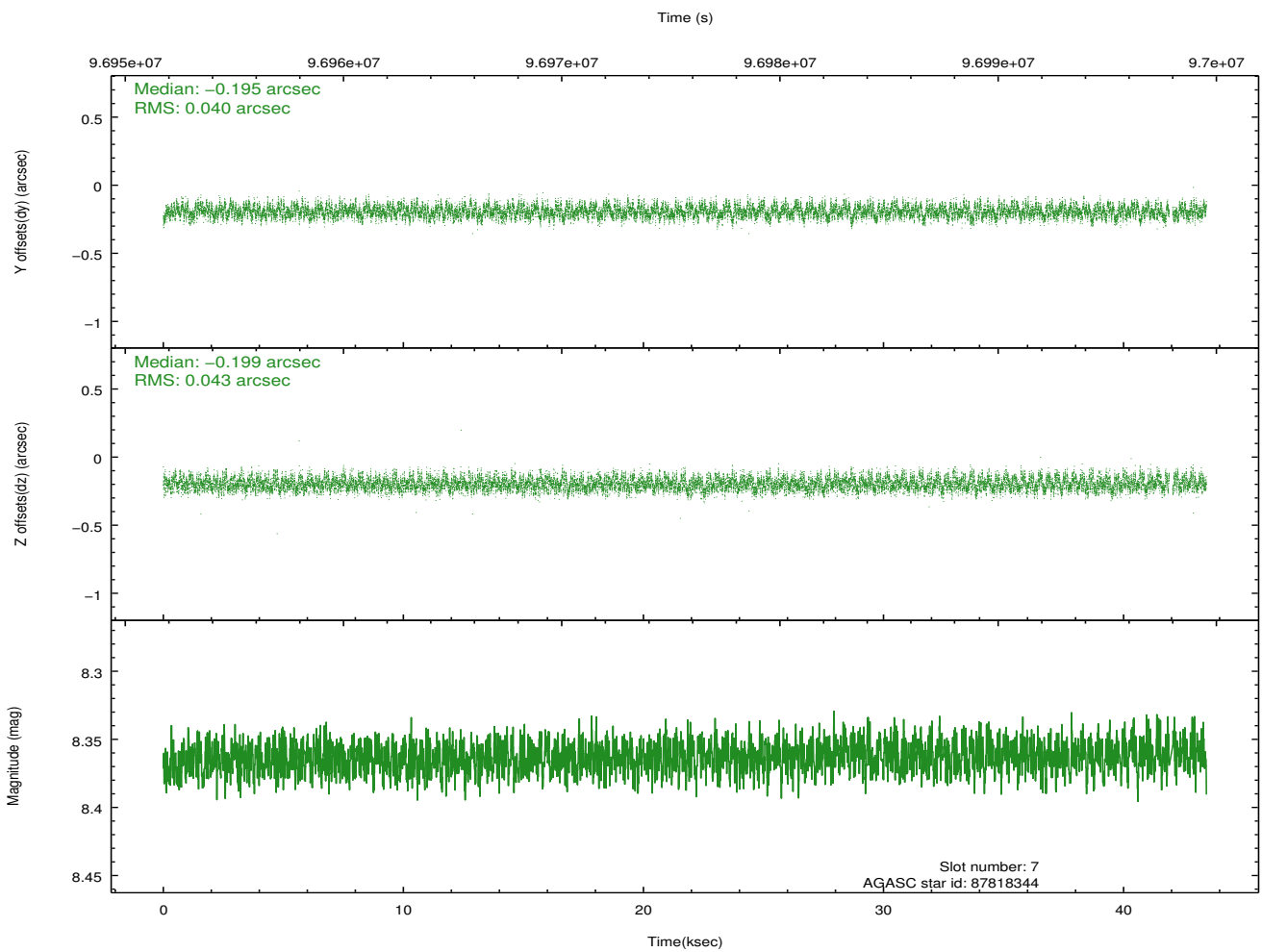
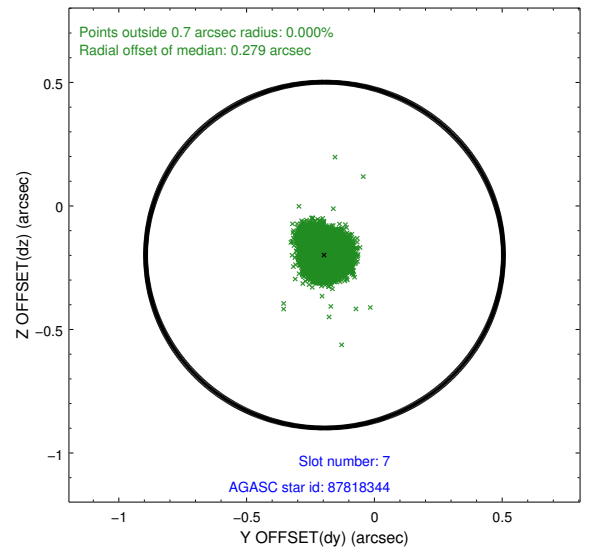
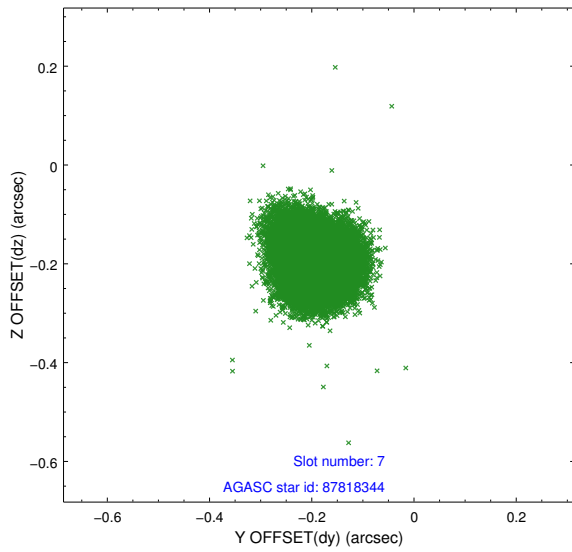
2.4.3 Slot 5



2.4.4 Slot 6

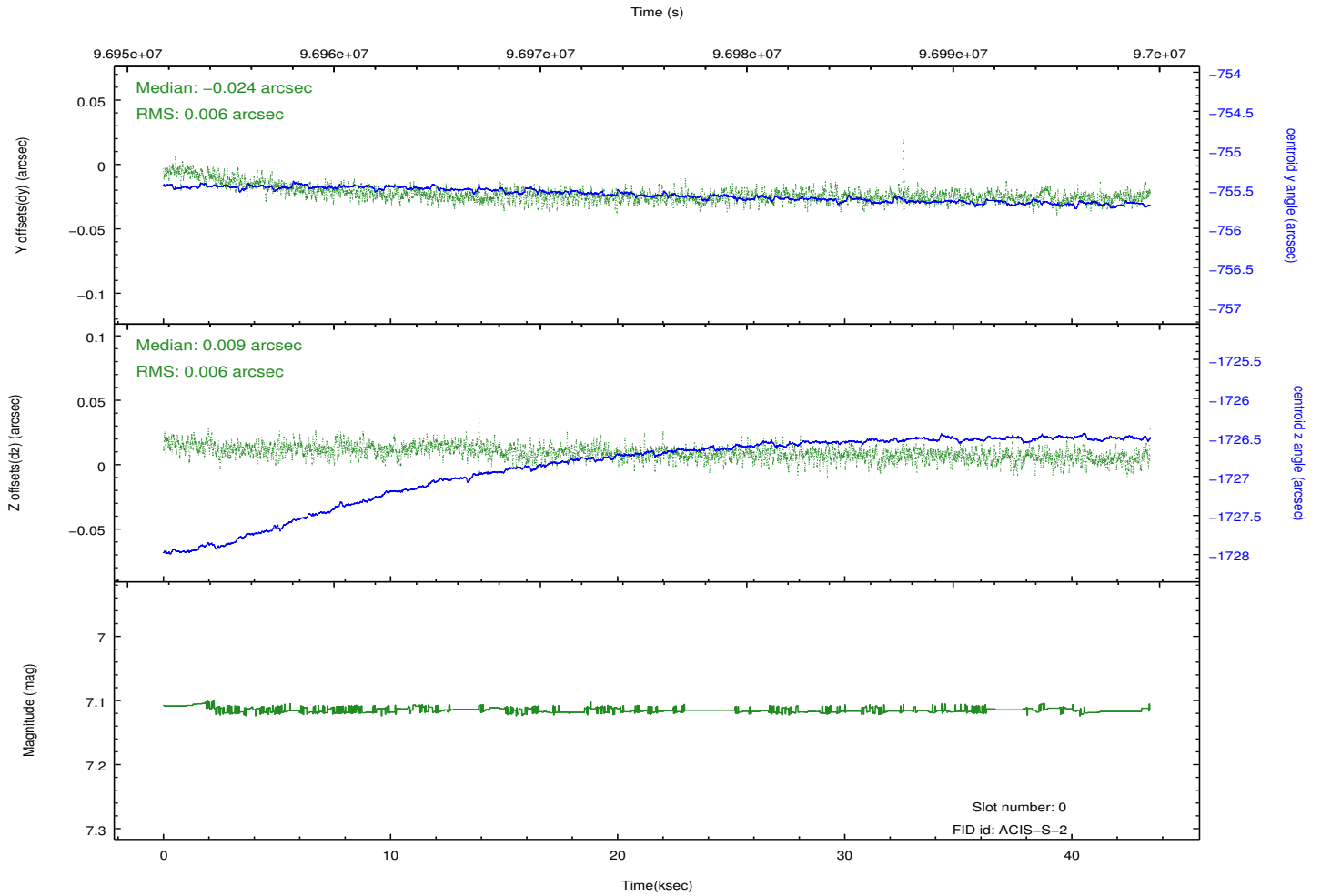
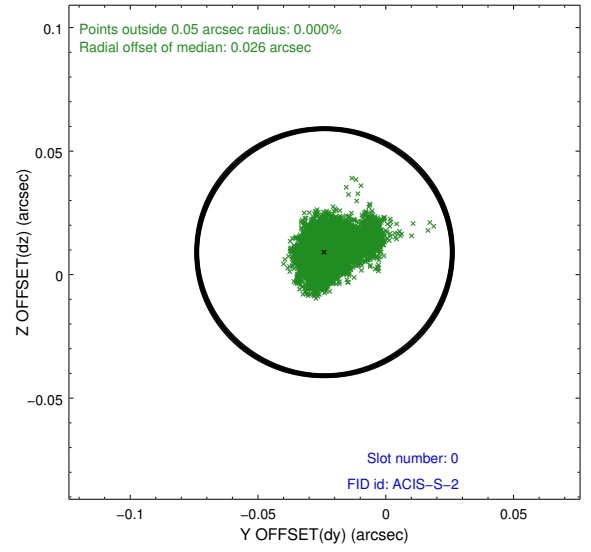
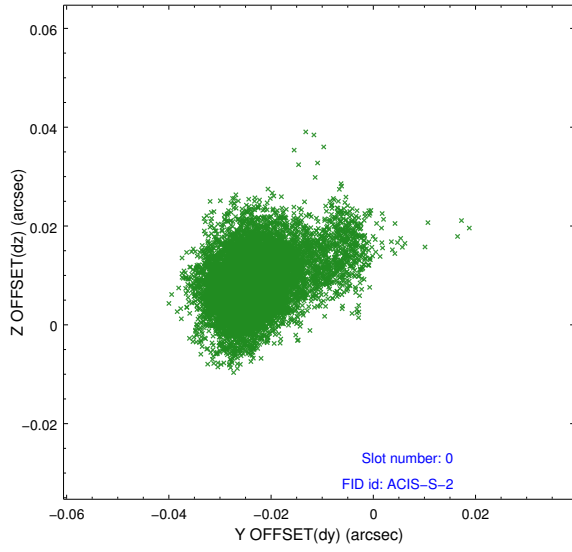


2.4.5 Slot 7

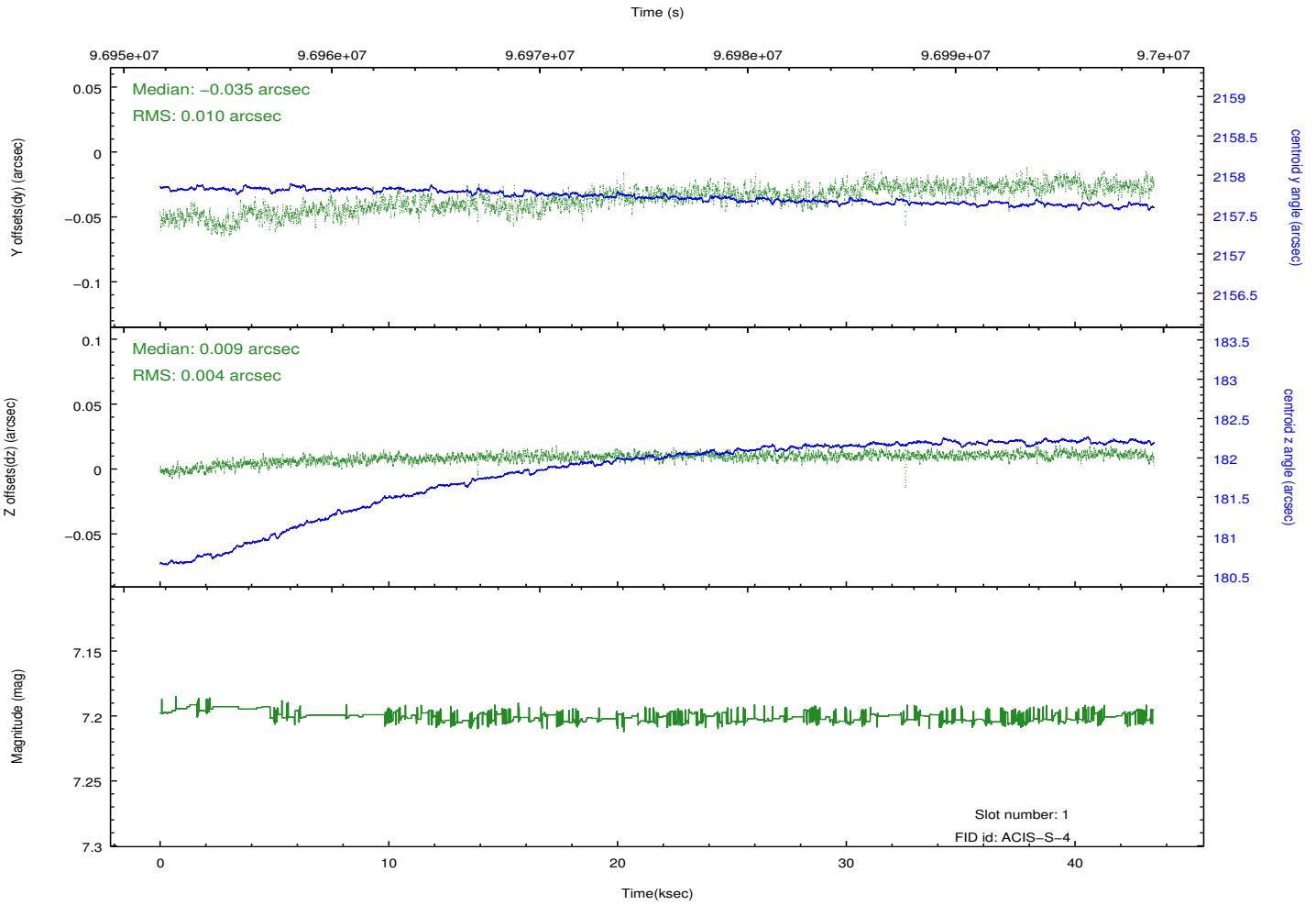
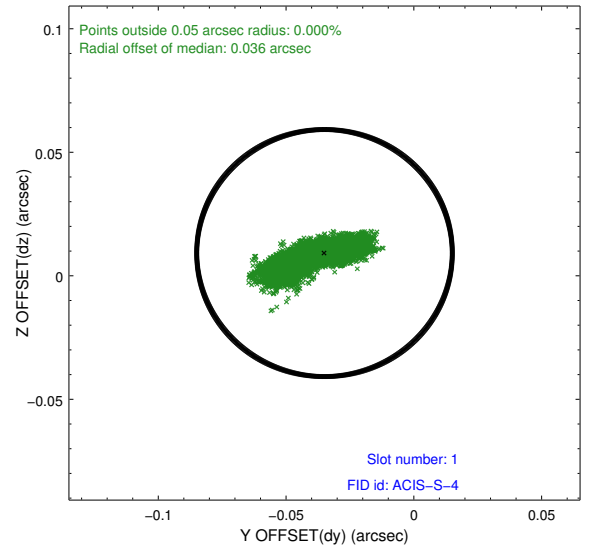
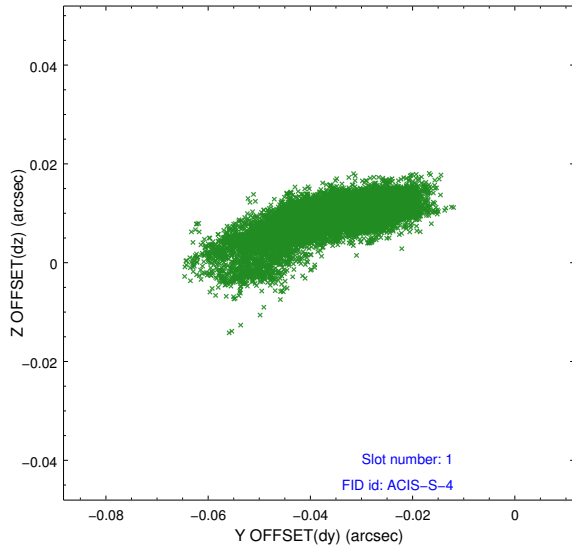


2.5 FID Slots

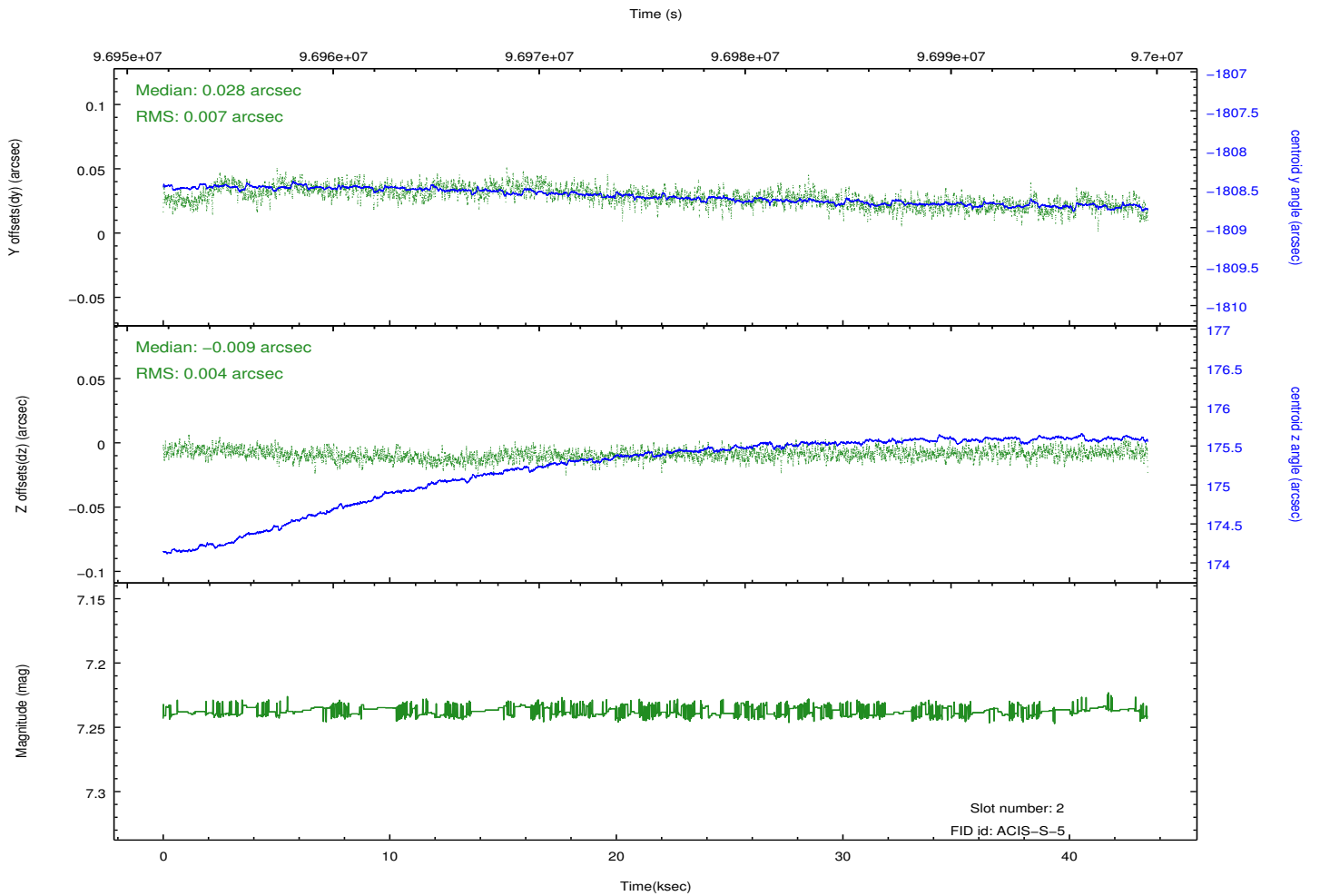
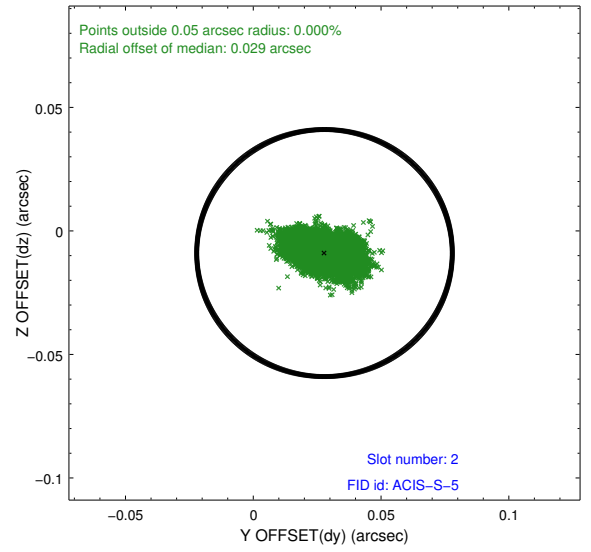
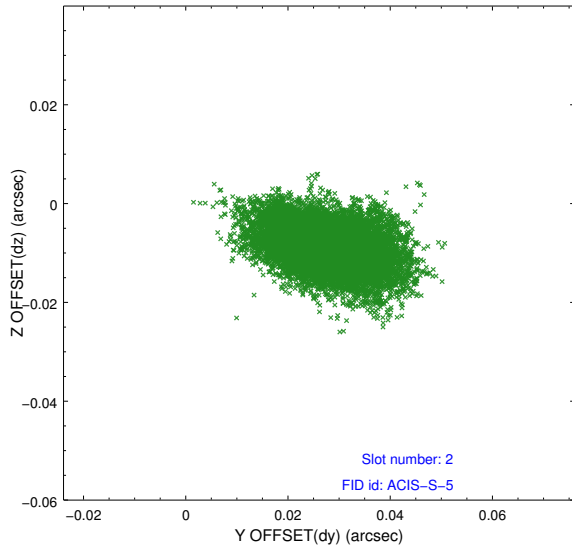
2.5.1 Slot 0



2.5.2 Slot 1



2.5.3 Slot 2



A Summary

A.1 Status

V&V Scientist	Jen Lauer
V&V Date (YYYY-MM-DD)	2012.09.17
V&V Edition	1
V&V Disposition and Status	OK
V&V Charge Time	42.94

A.2 Comments