

V&V Reference Report

L2 ASCDS Version : 8.4.5

Observation 1699 - L2 Version 3
Chandra X-Ray Center

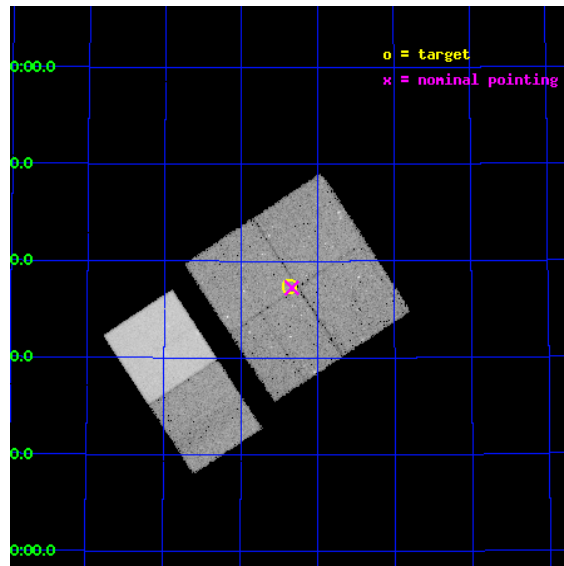
L2 Processing Date : Sep 18 2012

Contents

1	Front	2
2	OBI	3
2.1	OBI	3
2.1.1	Images	3
2.1.2	Bias	3
2.1.3	Parameters	4
2.1.4	Events	4
2.2	Compared Parameters	5
2.3	Aspect	6
2.4	Star Slots	9
2.4.1	Slot 3	9
2.4.2	Slot 4	10
2.4.3	Slot 5	11
2.4.4	Slot 6	12
2.4.5	Slot 7	13
2.5	FID Slots	14
2.5.1	Slot 0	14
2.5.2	Slot 1	15
2.5.3	Slot 2	16
A	Summary	17
A.1	Status	17
A.2	Comments	17

1 Front

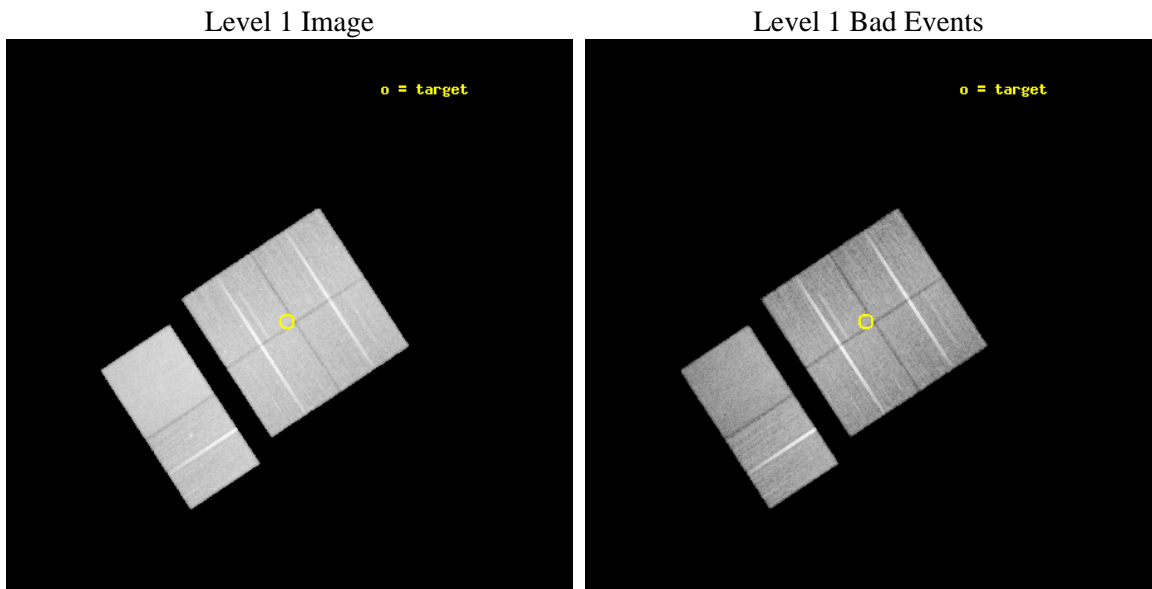
seq_num	900058	Sequence number
obs_id	1699	Observation id
title	CHANDRA OBSERVATIONS OF THE DEEP ISO FIELD	Proposal title
observer	Dr. Richard Mushotzky	Principal investigator
object	ISO NW #2	Source name
dtycycle	0	
cycle	P	events from which exps? Prim/Second/Both
ra_targ	158.341667	Observer's specified target RA [deg]
dec_targ	57.623611	Observer's specified target Dec [deg]
ra_nom	158.3342608383	Nominal RA [deg]
dec_nom	57.620959060523	Nominal Dec [deg]
roll_nom	236.65568283775	Nominal Roll [deg]
revision	3	Processing version of data
ontime	41257.495404884	Sum of GTIs [s]
livetime	40735.068155786	Livetime [s]
ontime0	41257.372284889	Sum of GTIs [s]
ontime1	41257.413324893	Sum of GTIs [s]
ontime2	41257.454364896	Sum of GTIs [s]
ontime3	41257.495404884	Sum of GTIs [s]
ontime6	41254.336494729	Sum of GTIs [s]
ontime7	41257.536444888	Sum of GTIs [s]
l2events	247706	Number of level 2 events



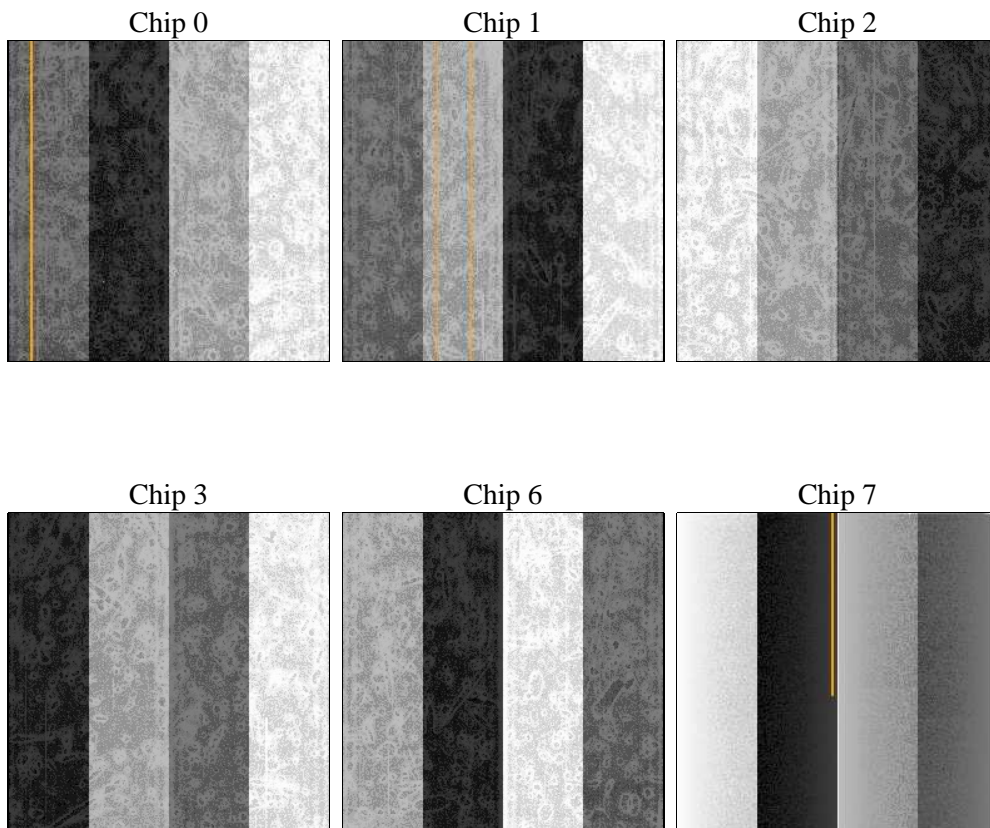
2 OBI

2.1 OBI

2.1.1 Images



2.1.2 Bias



2.1.3 Parameters

obi_num	1	Obi number	sched_exp_time	41300.000000	[s] Scheduled observation exposure time
ascdsver	8.4.5	Processing system revision	ontime	41257.495404884	Sum of GTIs [s]
caldbver	4.5.1.1	 	ontime0	41257.372284889	Sum of GTIs [s]
date	2012-09-18T23:09:34	Date and time of file creation	ontime1	41257.413324893	Sum of GTIs [s]
revision	3	Processing version of data	ontime2	41257.454364896	Sum of GTIs [s]
			ontime3	41257.495404884	Sum of GTIs [s]
			ontime6	41254.336494729	Sum of GTIs [s]
			ontime7	41257.536444888	Sum of GTIs [s]
			l1events	1493360	Number of level 1 events

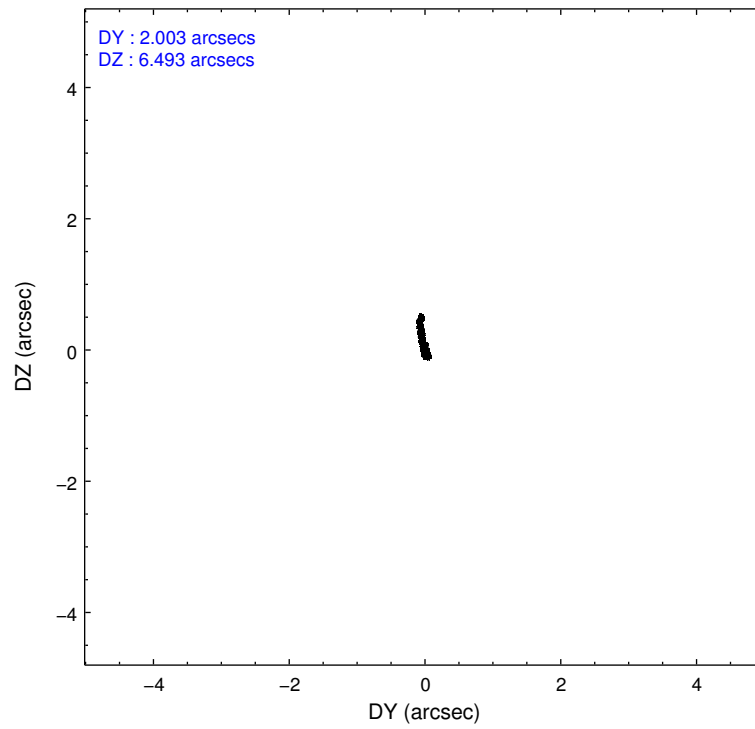
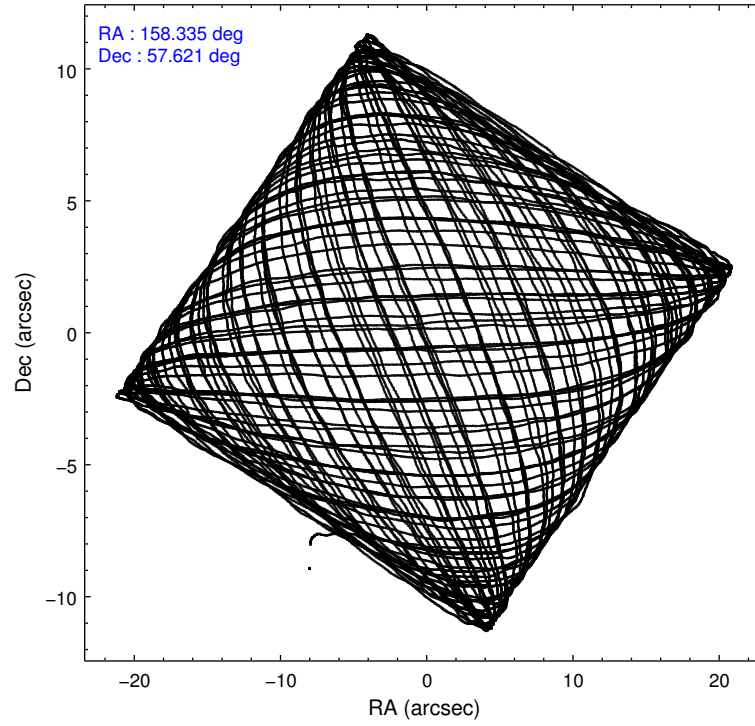
2.1.4 Events

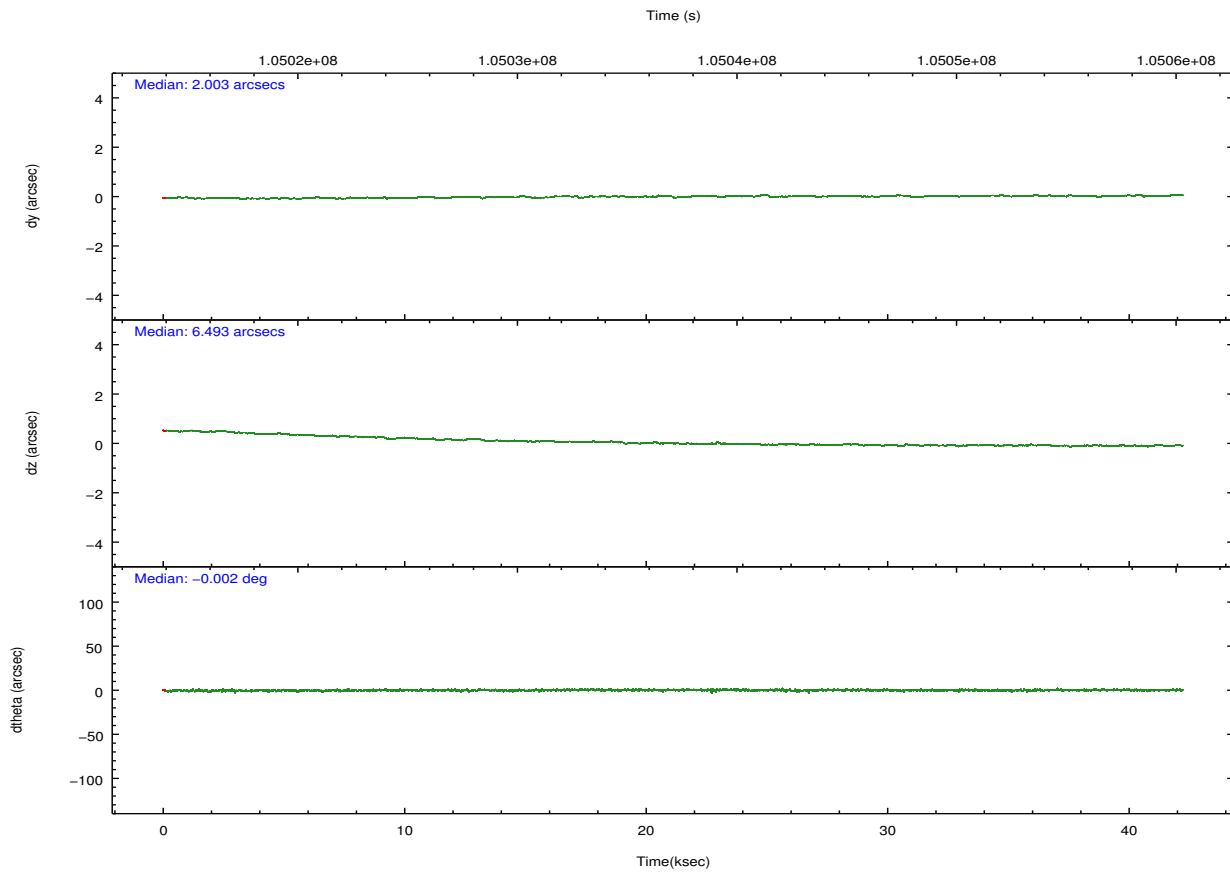
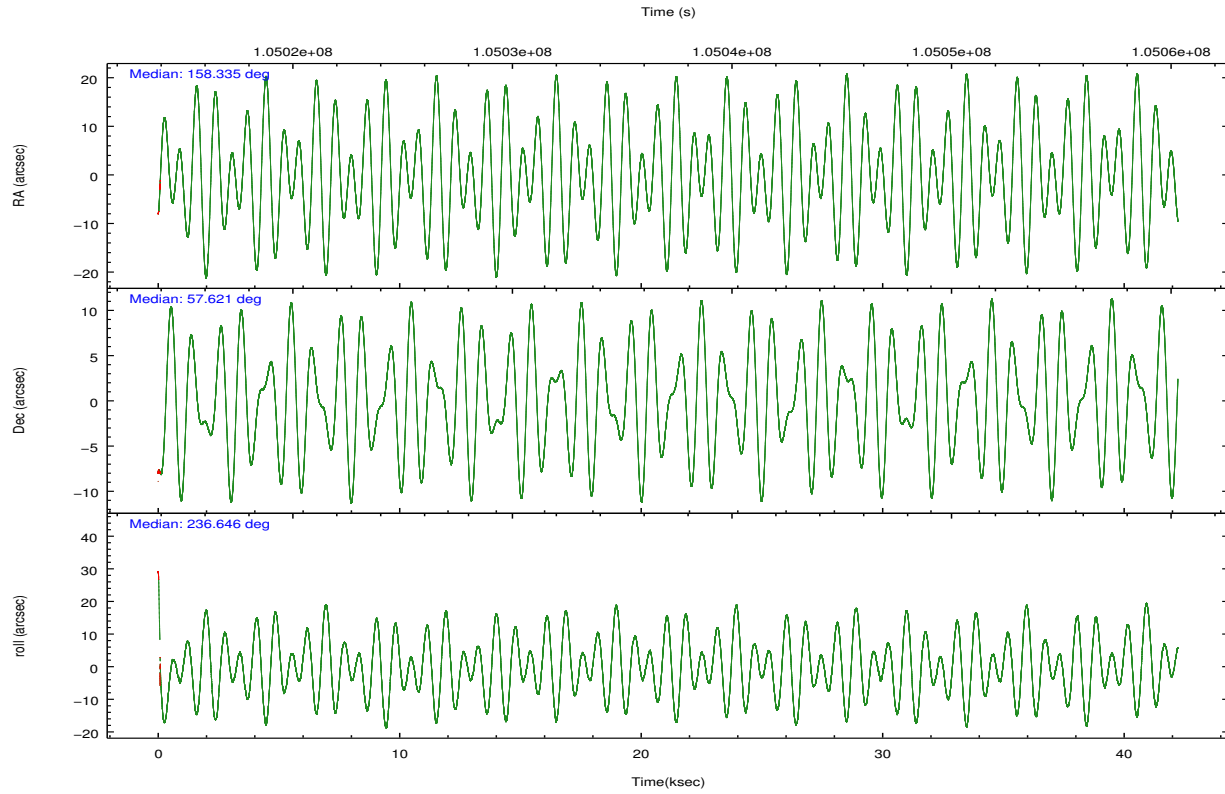
	ccd 0	ccd 1	ccd 2	ccd 3	ccd 6	ccd 7		ccd 0	ccd 1	ccd 2	ccd 3	ccd 6	ccd 7
level 1 events	219064	226267	242983	241719	254347	308980	grade 0 events	12256	12542	12152	12066	11919	12027
rejected events	190128	195505	214651	213531	225340	181910		5%	5%	5%	4%	4%	3%
rejected %	86%	86%	88%	88%	88%	58%	grade 1 events	104	101	98	110	130	304
								0%	0%	0%	0%	0%	0%
							grade 2 events	6255	6330	6043	5740	5914	24959
								2%	2%	2%	2%	2%	8%
							grade 3 events	2732	3073	2700	2625	2781	11349
								1%	1%	1%	1%	1%	3%
							grade 4 events	2687	3129	2531	2705	2666	11465
								1%	1%	1%	1%	1%	3%
							grade 5 events	8753	9359	8350	9501	10400	29509
								3%	4%	3%	3%	4%	9%
							grade 6 events	5007	5689	4908	5052	5728	67277
								2%	2%	2%	2%	2%	21%
							grade 7 events	181270	186044	206201	203920	214809	152090
								82%	82%	84%	84%	84%	49%

2.2 Compared Parameters

Parameter	Planned	Actual	Parameter	Planned	Actual
Instrument	ACIS	ACIS	Obspar format version number	7	7
Detector	ACIS-012367	ACIS-012367	Obspar file type	PREDICTED	ACTUAL
Grating	NONE	NONE	Obspar update status	NONE	UPDATED
Data mode	FAINT	FAINT	Number of optional ACIS chips dropped	0	0
Observation mode	POINTING	POINTING	On-chip summing requested	N	N
[deg] Pointing RA	158.337232	158.3342608382969	Subarray requested	NONE	NONE
[deg] Pointing Dec	57.648384	57.62095906052294	Alternating exposures requested	N	N
[deg] Pointing Roll	236.444482	236.6556828377501	[s] Primary exposure time	0.000000	3.2
[mm] SIM focus pos	-0.782348	-0.7809083437167272			
[mm] SIM defocus	0	0.001439871863259334			
[mm] SIM translation stage pos	-233.592463	-233.5874344608287			
[mm] SIM translation stage offset	0	-0.005018542100998502			
[s] Observation start time (MET)	105016902.184000	105015578.14967			
Observation start date	2001-04-30T11:20:38	2001-04-30T10:59:38			
[s] Observation end time (MET)	105058202.184000	105059234.95137			
Observation end date	2001-04-30T22:48:58	2001-04-30T23:07:14			
Read mode	TIMED	TIMED			

2.3 Aspect



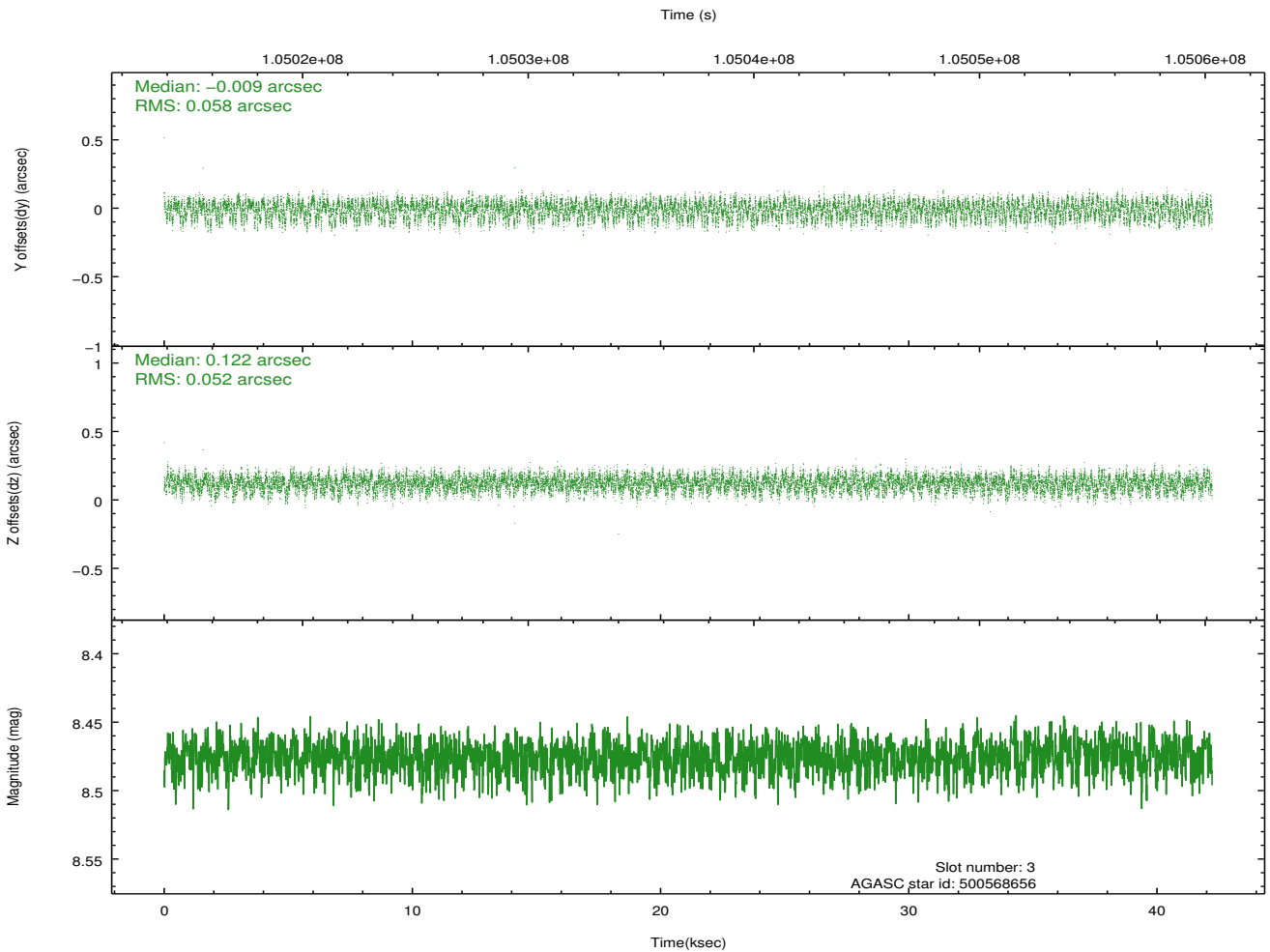
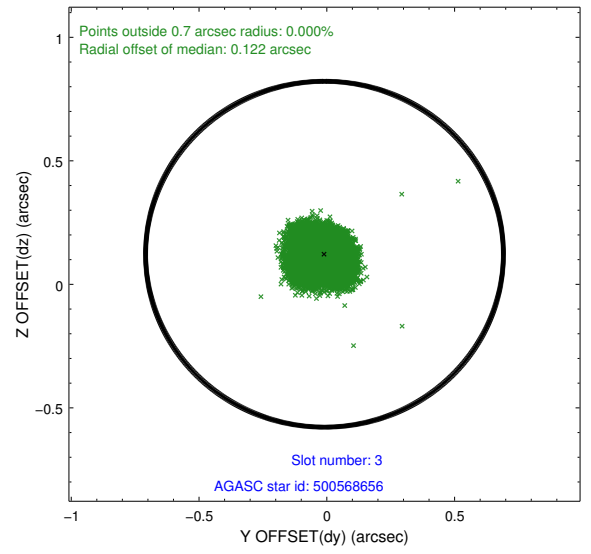
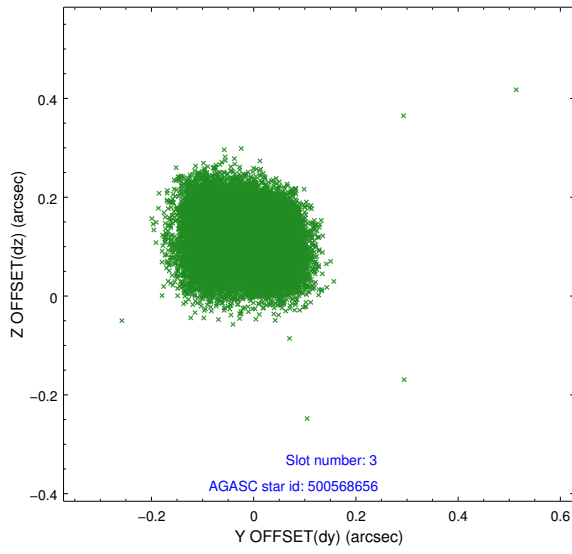


Slot Statistics

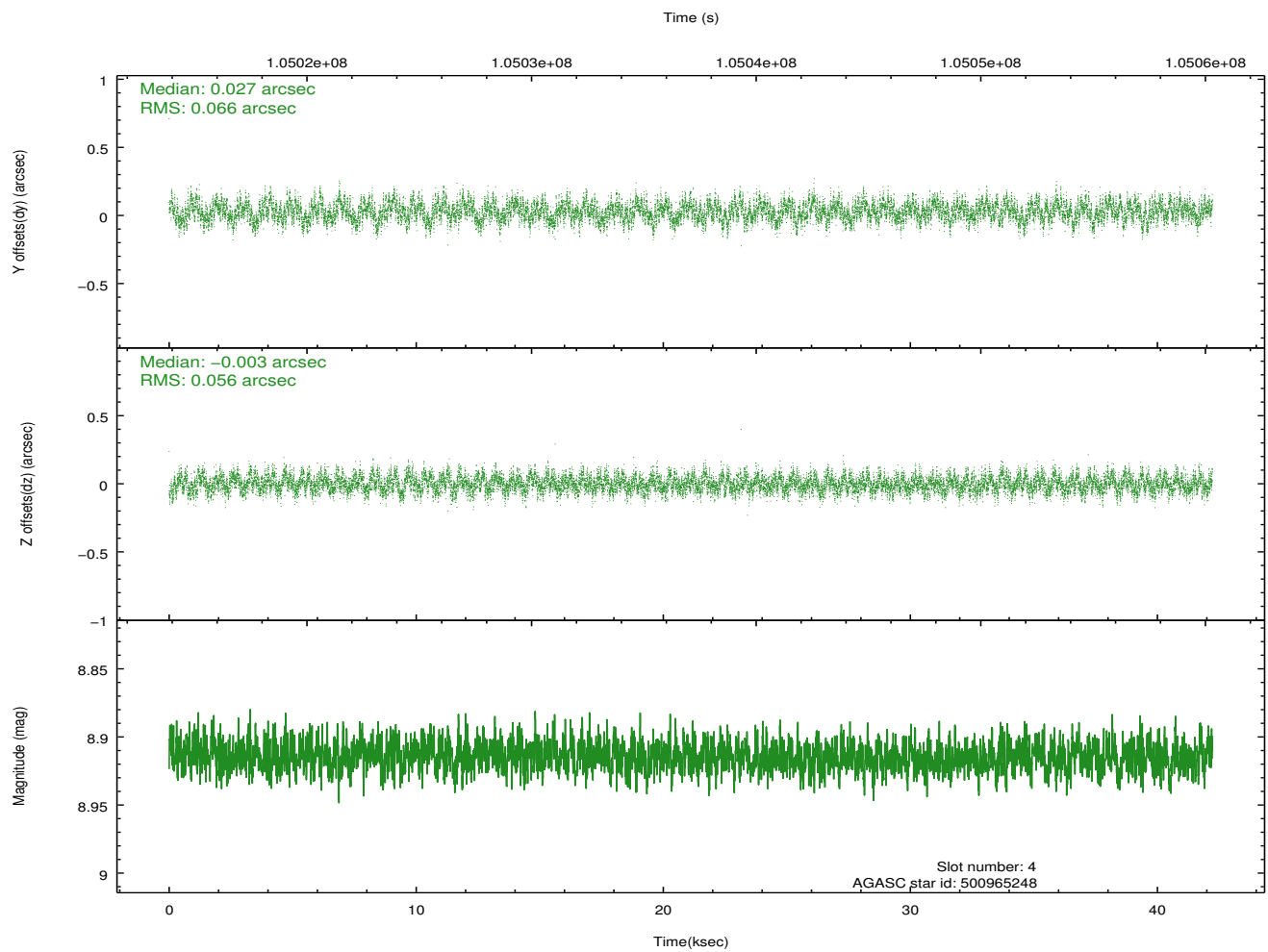
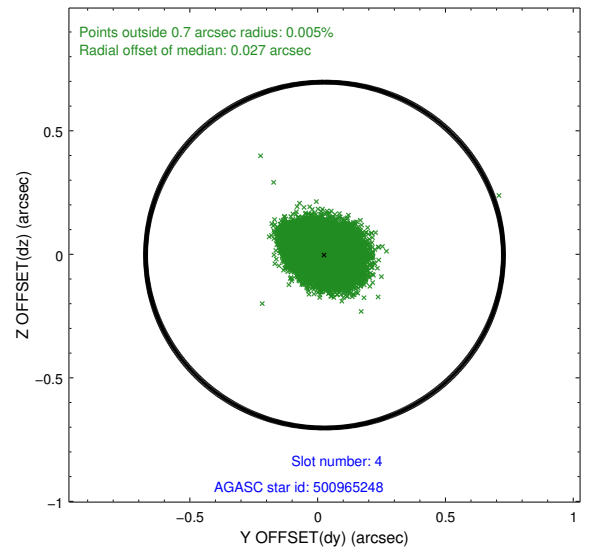
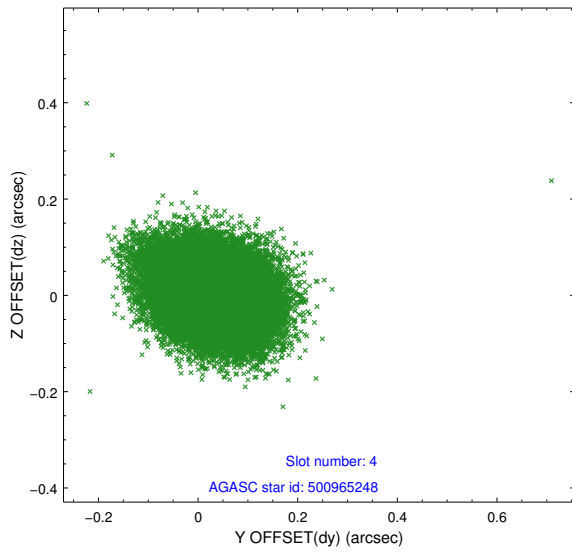
slot	status	id	mag	n_pts	med_dy	med_dz	dr1	dr2	ra	dec	mean_y	mean_z
0	FID	ACIS-I-2	7.15	10290	-0.046	-0.072	0.010	0.016	0.000000	0.000000	-756.39	-836.39
1	FID	ACIS-I-4	7.18	10285	-0.010	0.053	0.007	0.012	0.000000	0.000000	2157.69	1069.91
2	FID	ACIS-I-5	7.23	10289	-0.045	0.088	0.010	0.018	0.000000	0.000000	-1810.21	1067.79
3	GUIDE	500568656	8.48	20572	-0.009	0.122	0.084	0.132	159.217900	57.306375	70.64	2101.41
4	GUIDE	500965248	8.91	20575	0.027	-0.003	0.092	0.147	157.040068	57.653140	1347.91	-2104.59
5	GUIDE	500569128	9.03	20505	0.041	-0.084	0.071	0.121	157.930103	57.115848	2036.09	394.98
6	GUIDE	500959408	9.50	20570	0.052	-0.044	0.088	0.144	157.361573	57.862425	380.56	-1990.50
7	GUIDE	500962432	9.53	20572	-0.104	0.011	0.079	0.131	158.977500	58.020820	-1796.30	272.42

2.4 Star Slots

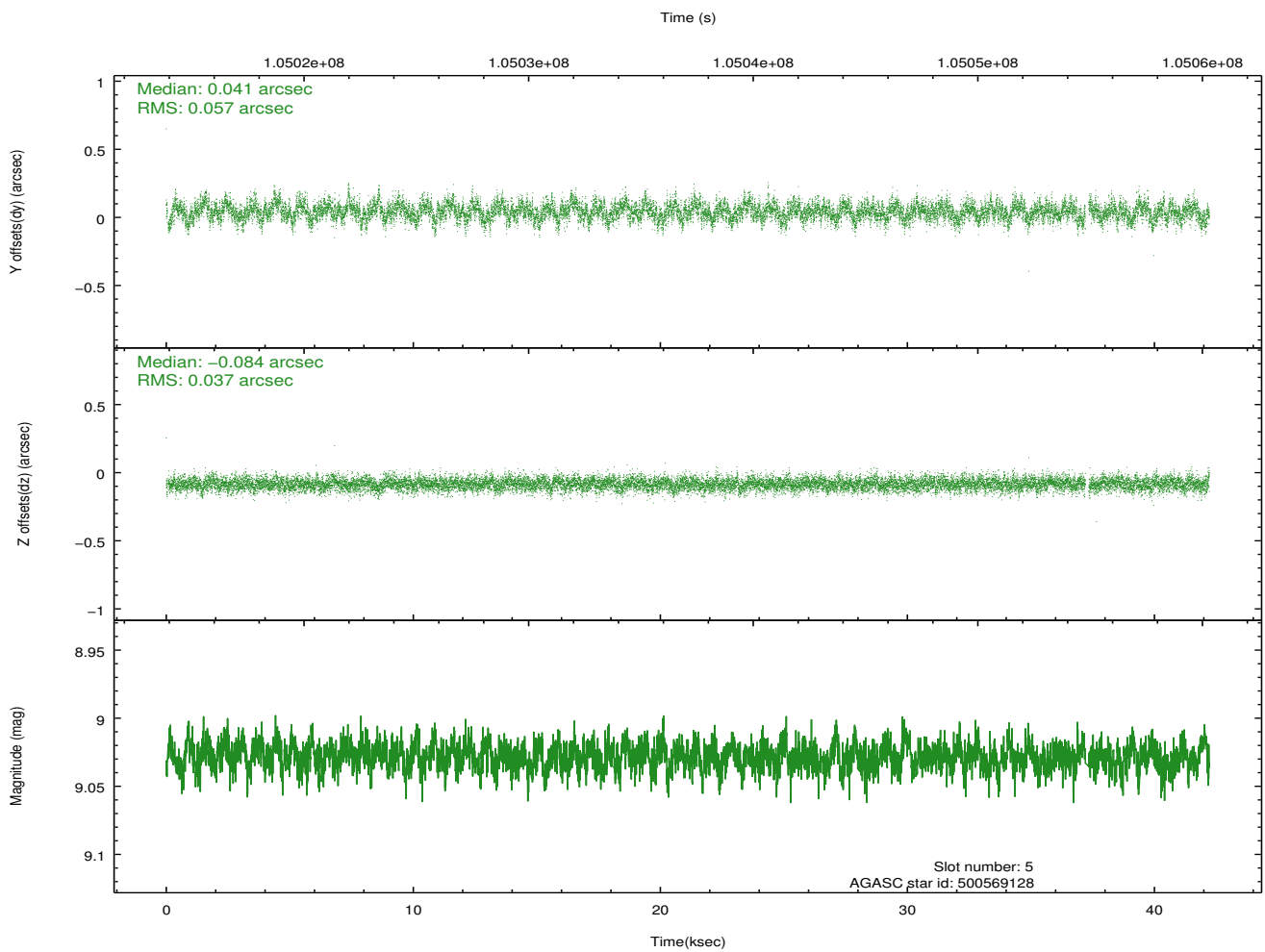
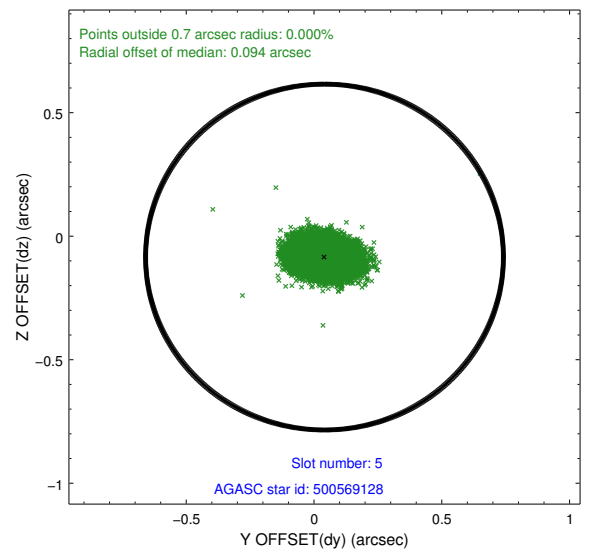
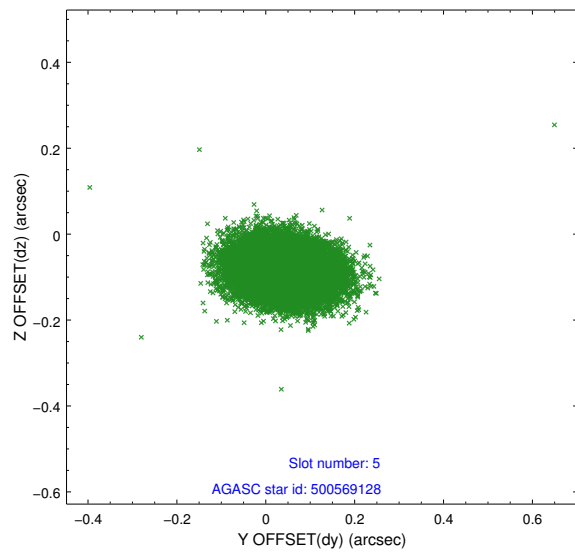
2.4.1 Slot 3



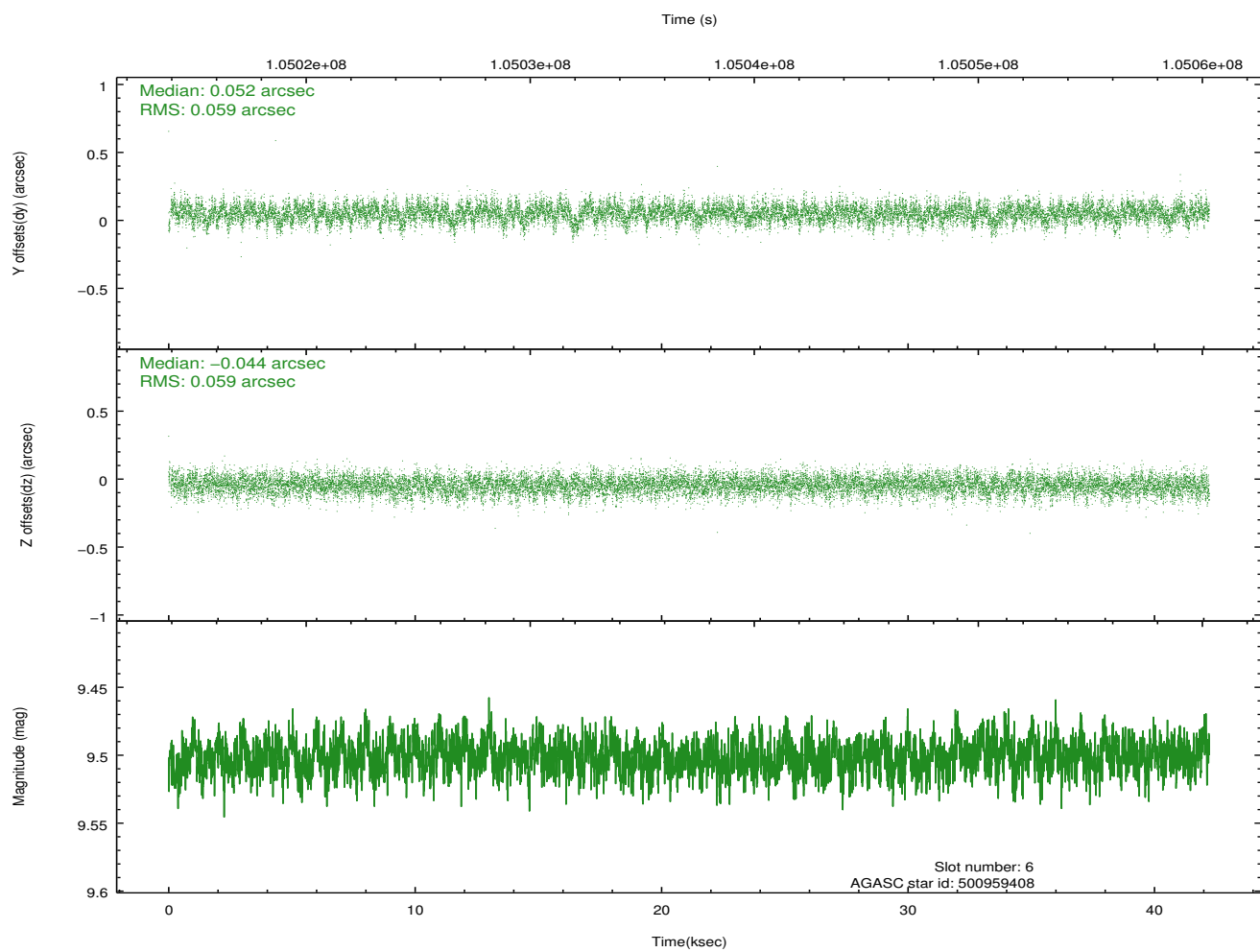
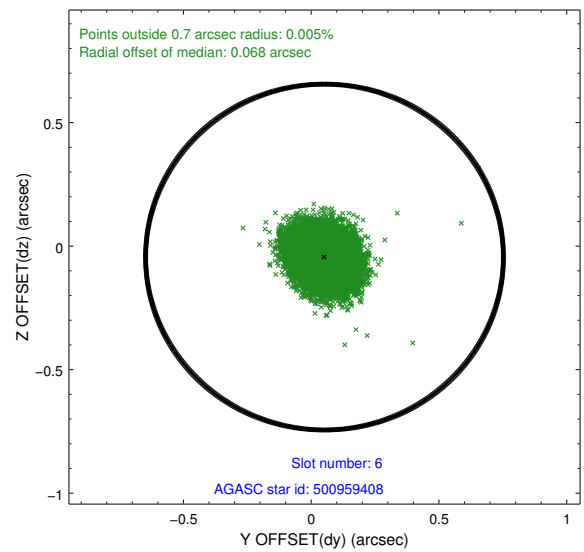
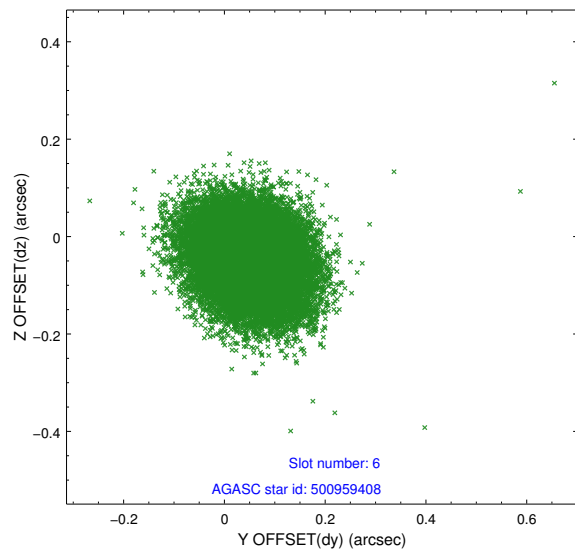
2.4.2 Slot 4



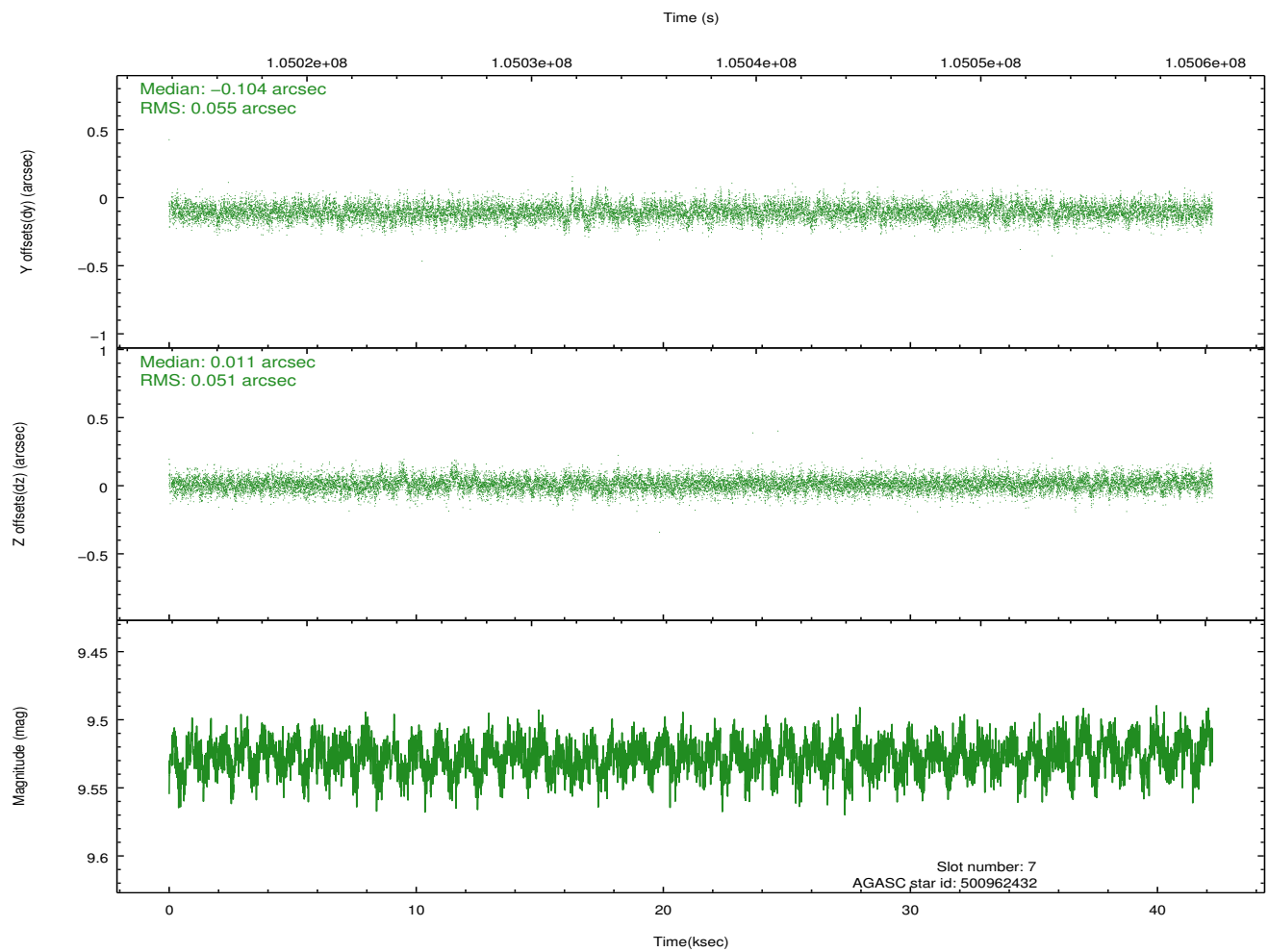
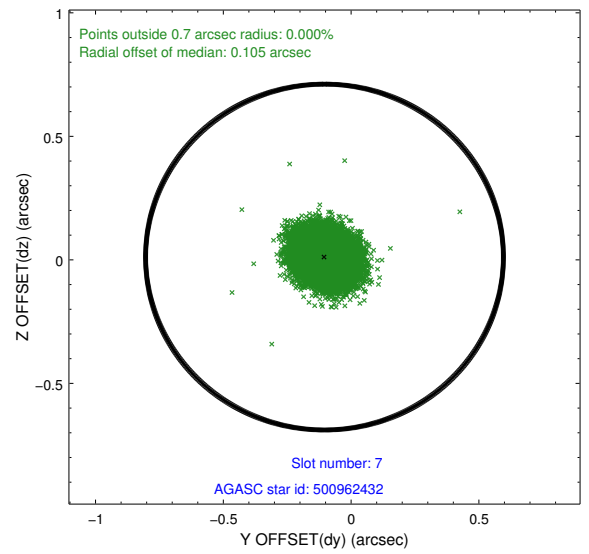
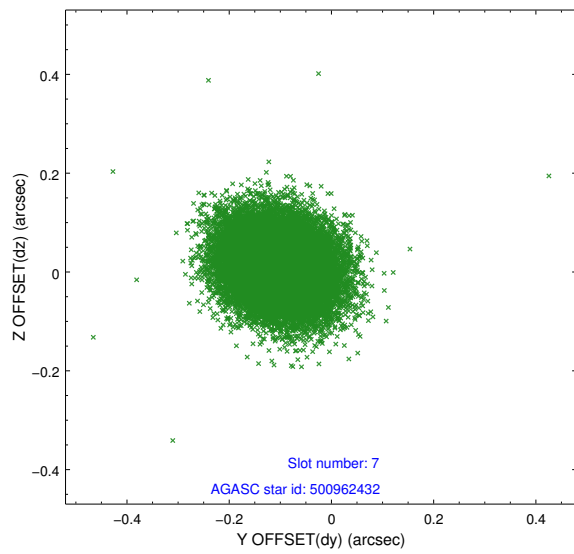
2.4.3 Slot 5



2.4.4 Slot 6

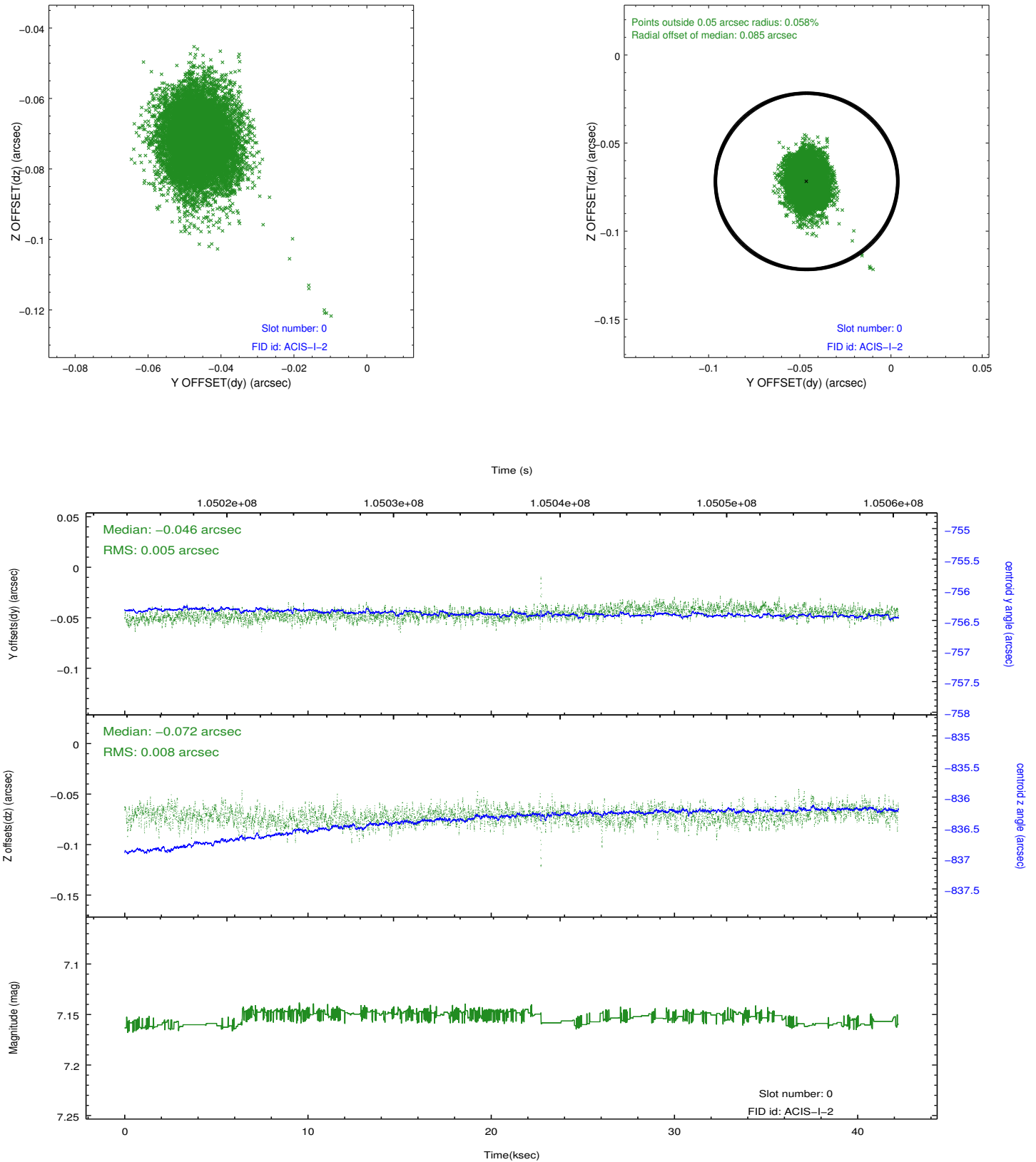


2.4.5 Slot 7

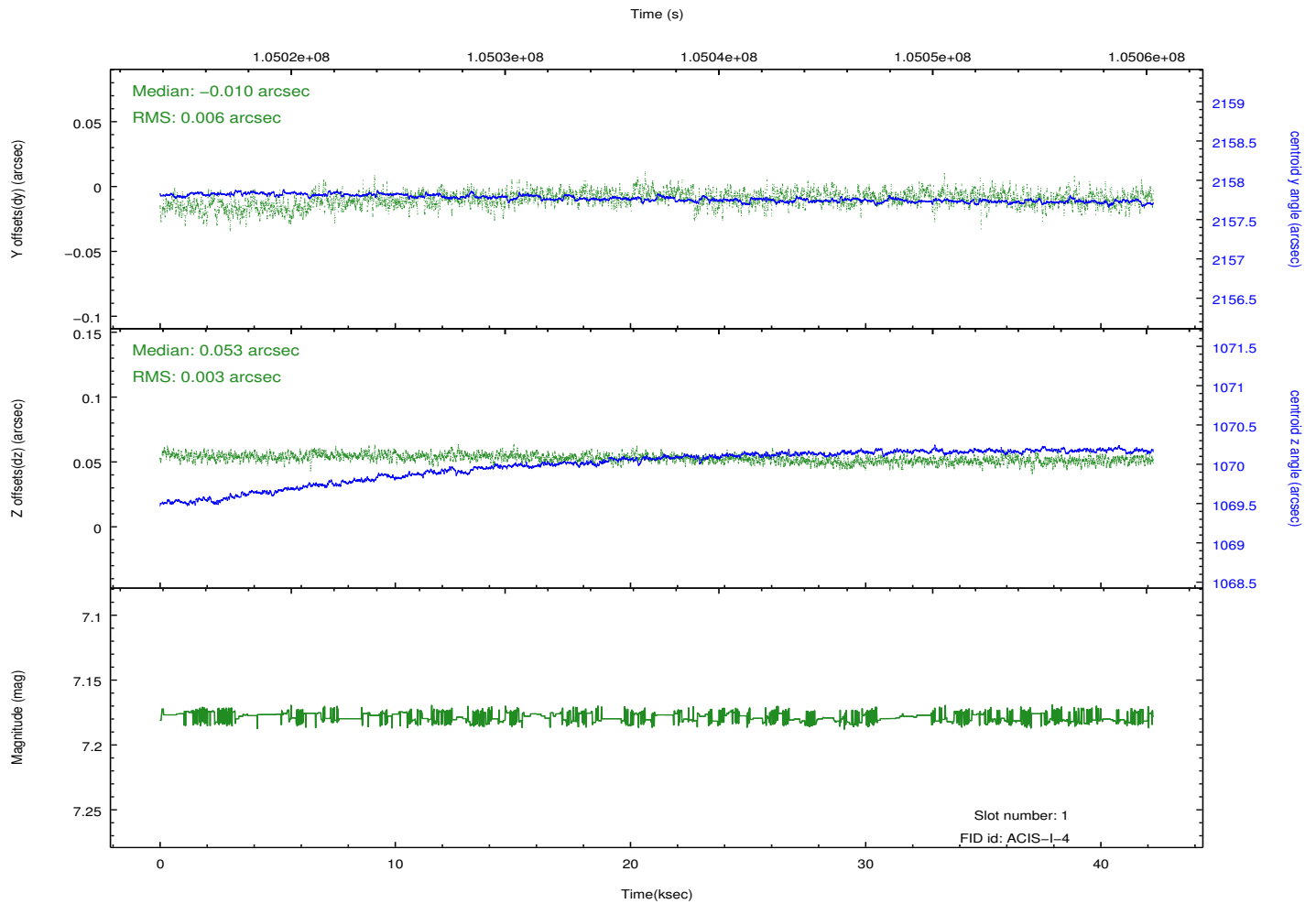
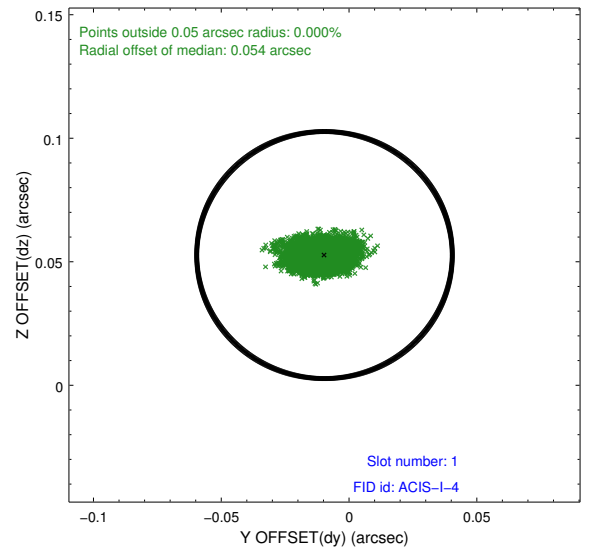
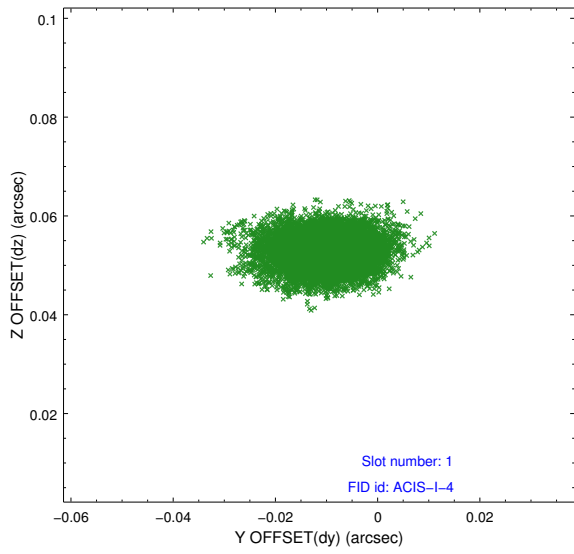


2.5 FID Slots

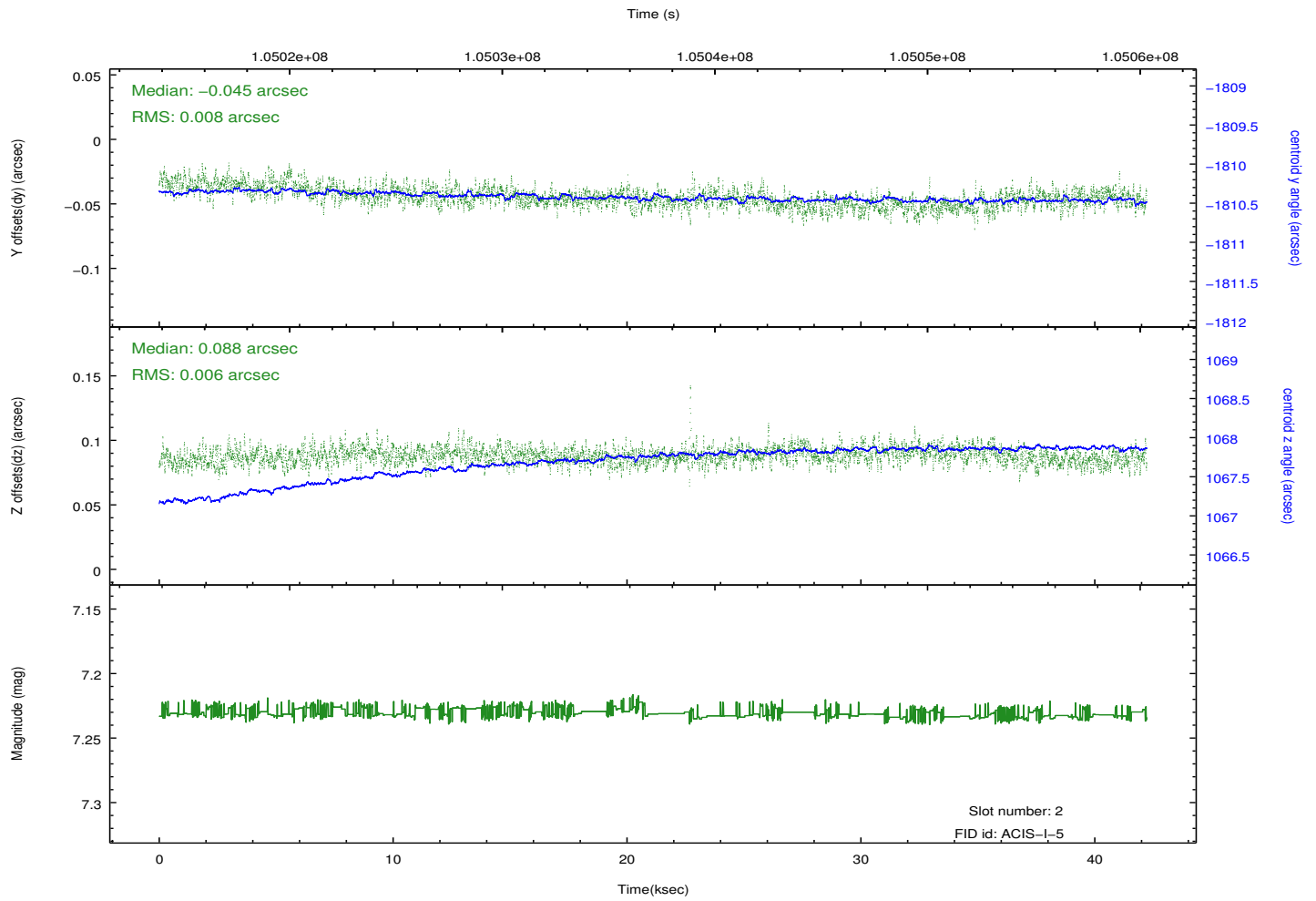
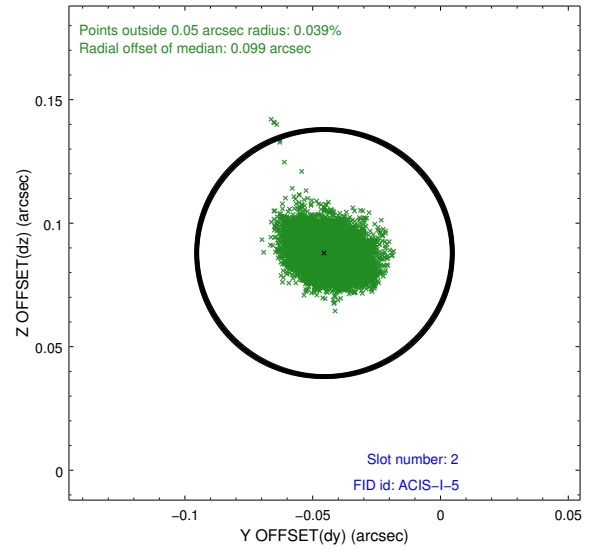
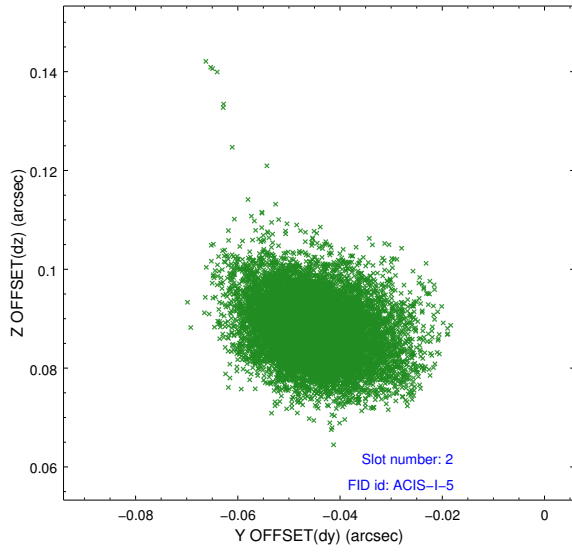
2.5.1 Slot 0



2.5.2 Slot 1



2.5.3 Slot 2



A Summary

A.1 Status

V&V Scientist	Jen Lauer
V&V Date (YYYY-MM-DD)	2012.09.21
V&V Edition	1
V&V Disposition and Status	OK
V&V Charge Time	41.3

A.2 Comments

Charge time for this ObsId remains at previous value of 41.3 ks although with the current processing the charge time would have been 41.26 ksec.