

V&V Reference Report

L2 ASCDS Version : 10.3.1

Observation 17059 - L2 Version 1
Chandra X-Ray Center

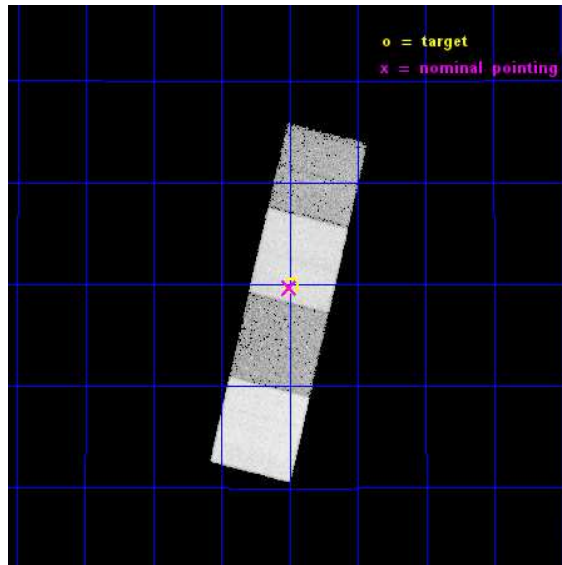
L2 Processing Date : Dec 6 2014

Contents

1	Front	2
2	OBI	3
2.1	OBI	3
2.1.1	Images	3
2.1.2	Bias	3
2.1.3	Parameters	4
2.1.4	Events	4
2.2	Compared Parameters	5
2.3	Aspect	6
2.4	Star Slots	9
2.4.1	Slot 3	9
2.4.2	Slot 4	10
2.4.3	Slot 5	11
2.4.4	Slot 6	12
2.4.5	Slot 7	13
2.5	FID Slots	14
2.5.1	Slot 0	14
2.5.2	Slot 1	15
2.5.3	Slot 2	16
A	Summary	17
A.1	Status	17
A.2	Comments	17

1 Front

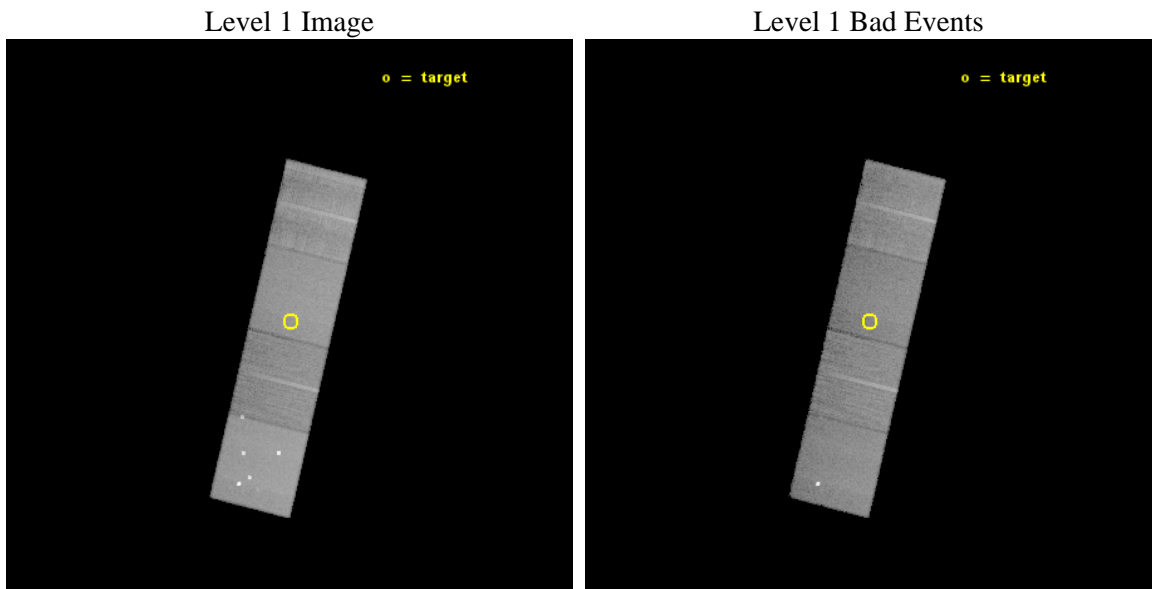
seq_num	703063	Sequence number
obs_id	17059	Observation id
title	ULTRAMASSIVE BLACK HOLES: FUNDAMENTAL PLANE AND CORONAE	Proposal t
observer	Dr. Kayhan Gultekin	Principal investigator
object	MCG+03-07-047	Source name
dtycle	0	
cycle	P	events from which exps? Prim/Second/Both
ra_targ	40.620833	Observer's specified target RA [deg]
dec_targ	18.164667	Observer's specified target Dec [deg]
ra_nom	40.625377998894	Nominal RA [deg]
dec_nom	18.161380478339	Nominal Dec [deg]
roll_nom	283.62818742855	Nominal Roll [deg]
revision	1	Processing version of data
ontime	31068.200238943	Sum of GTIs [s]
livetime	30662.271330745	Livetime [s]
ontime5	31068.200238943	Sum of GTIs [s]
ontime6	31068.200238943	Sum of GTIs [s]
ontime7	31068.200238943	Sum of GTIs [s]
ontime8	31068.200238943	Sum of GTIs [s]
l2events	223710	Number of level 2 events



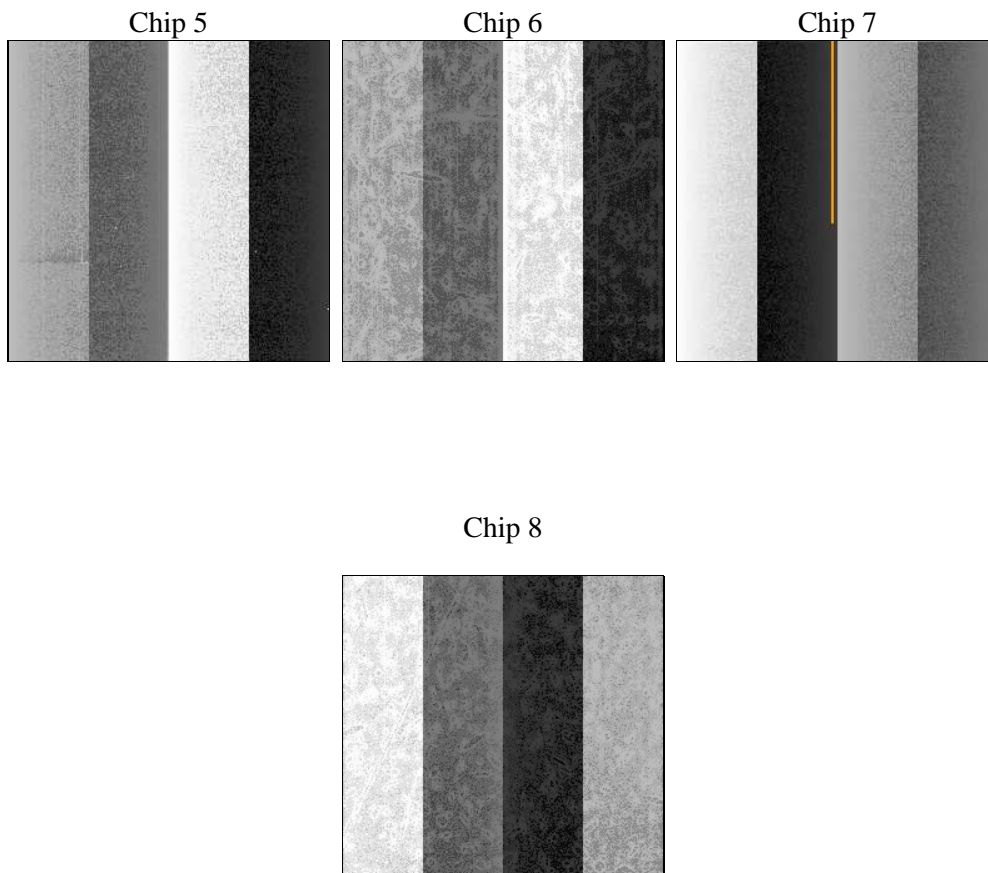
2 OBI

2.1 OBI

2.1.1 Images



2.1.2 Bias



2.1.3 Parameters

obi_num	0	Obi number	sched_exp_time	31000.369000	[s] Scheduled observation exposure time
ascdsver	10.3.1	Processing system revision	ontime	31068.200238943	Sum of GTIs [s]
caldbver	4.6.4	 	ontime5	31068.200238943	Sum of GTIs [s]
date	2014-12-06T19:31:28	Date and time of file creation	ontime6	31068.200238943	Sum of GTIs [s]
revision	1	Processing version of data	ontime7	31068.200238943	Sum of GTIs [s]
			ontime8	31068.200238943	Sum of GTIs [s]
			l1events	799104	Number of level 1 events

2.1.4 Events

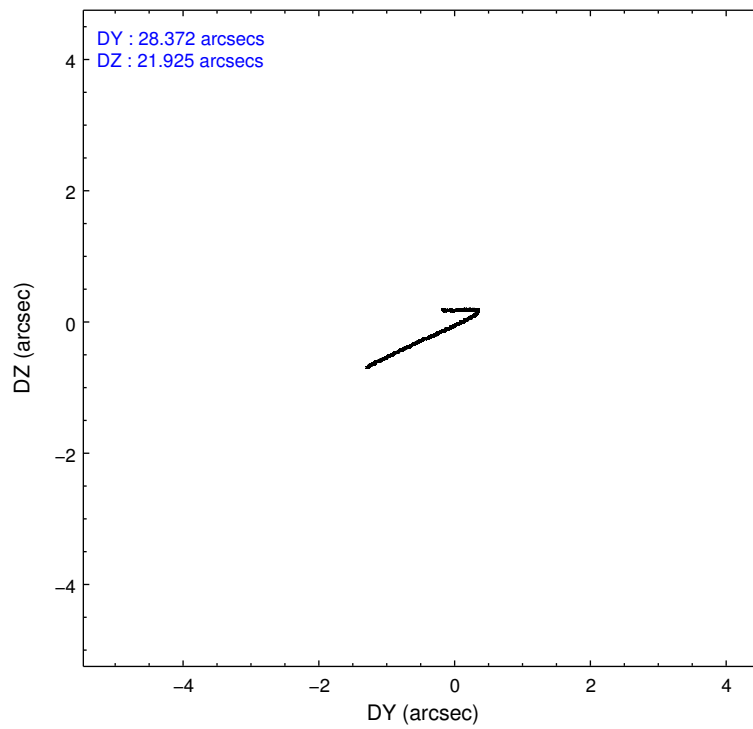
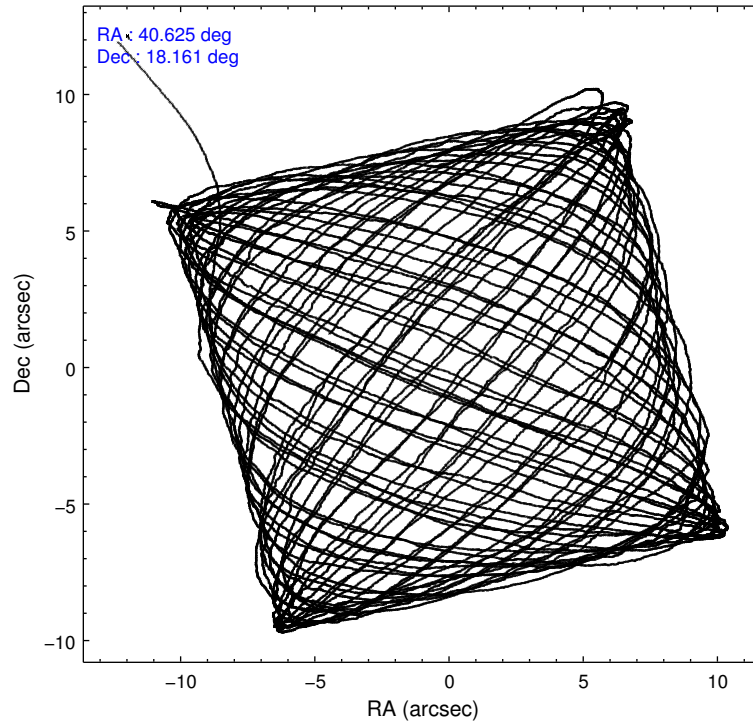
	ccd 5	ccd 6	ccd 7	ccd 8
level 1 events	266033	145530	196966	190575
rejected events	133434	127543	112065	140913
rejected %	50%	87%	56%	73%

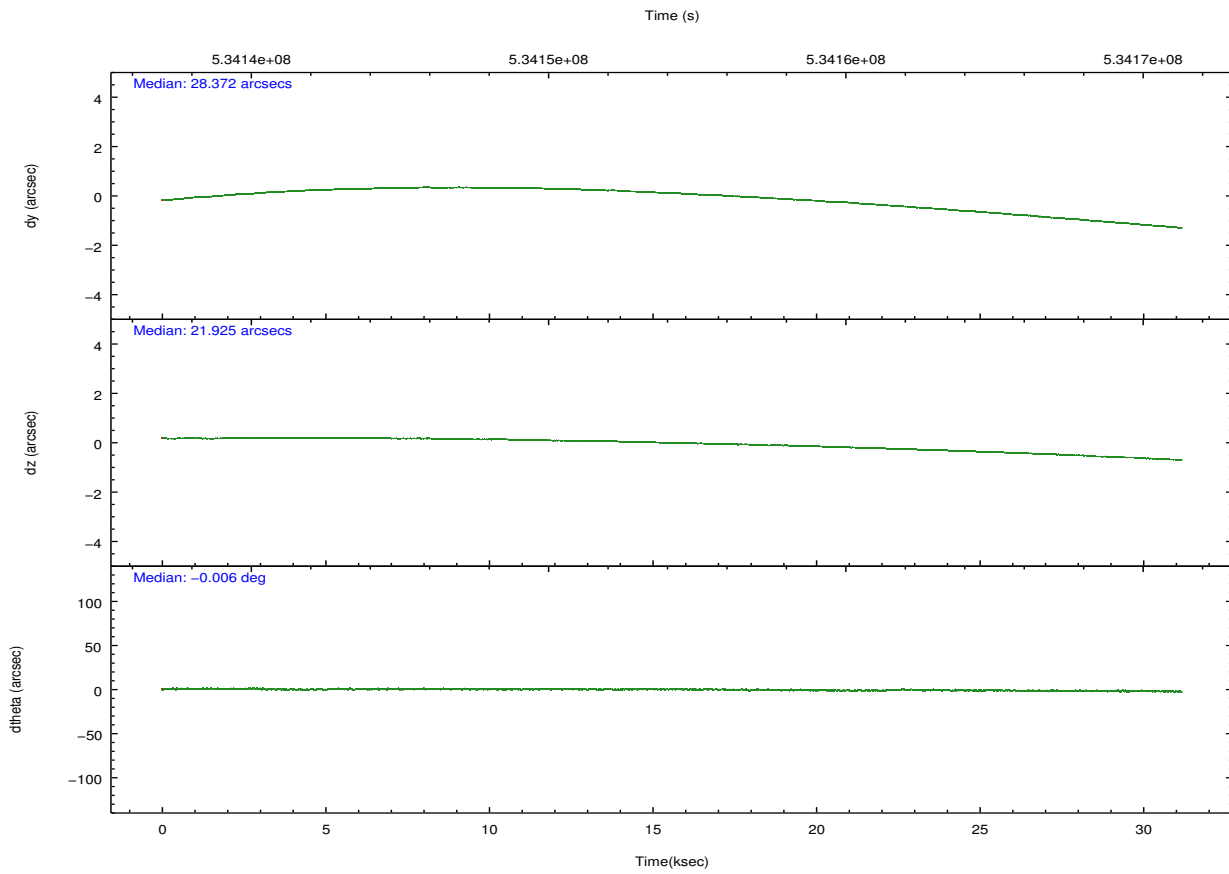
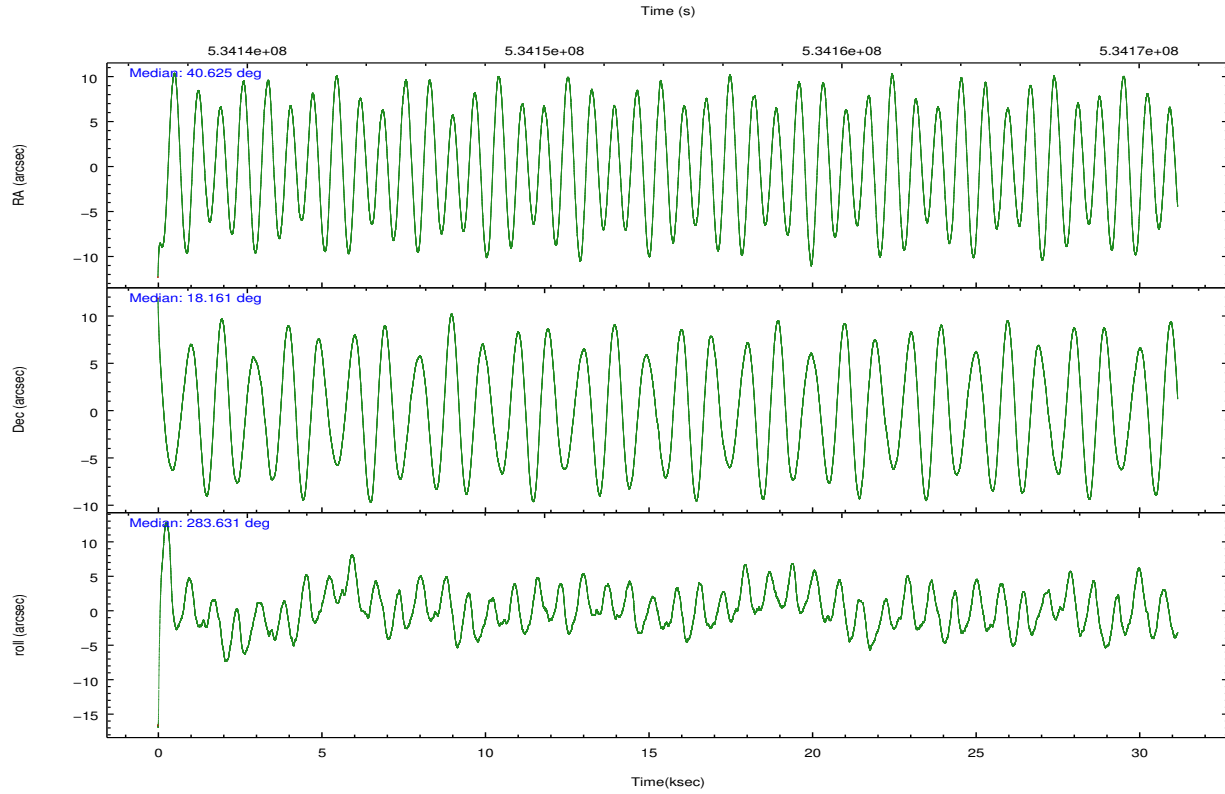
	ccd 5	ccd 6	ccd 7	ccd 8
grade 0 events	25690	6007	7275	13573
	9%	4%	3%	7%
grade 1 events	439	87	238	131
	0%	0%	0%	0%
grade 2 events	36286	4056	17550	12205
	13%	2%	8%	6%
grade 3 events	4053	1842	7072	5326
	1%	1%	3%	2%
grade 4 events	4043	1840	7121	4957
	1%	1%	3%	2%
grade 5 events	18483	7475	19816	11050
	6%	5%	10%	5%
grade 6 events	62560	4244	45892	13631
	23%	2%	23%	7%
grade 7 events	114479	119979	92002	129702
	43%	82%	46%	68%

2.2 Compared Parameters

Parameter	Planned	Actual	Parameter	Planned	Actual
Instrument	ACIS	ACIS	Obspar format version number	7	7
Detector	ACIS-5678	ACIS-5678	Obspar file type	PREDICTED	ACTUAL
Grating	NONE	NONE	Obspar update status	NONE	UPDATED
Data mode	FAINT	FAINT	Number of optional ACIS chips dropped	0	0
Observation mode	POINTING	POINTING	On-chip summing requested	N	N
[deg] Pointing RA	40.605176	40.62537799889449	Subarray requested	NONE	NONE
[deg] Pointing Dec	18.180981	18.16138047833885	Alternating exposures requested	N	N
[deg] Pointing Roll	283.477867	283.6281874285459	[s] Primary exposure time	0.000000	3.1
[mm] SIM focus pos	-0.684267	-0.6828225247311905			
[mm] SIM defocus	0	0.001444936568705701			
[mm] SIM translation stage pos	-190.132523	-190.1425803651734			
[mm] SIM translation stage offset	0	0.01005778216563158			
[s] Observation start time (MET)	534138721.184000	534137277.9726			
Observation start date	2014-12-05T03:50:54	2014-12-05T03:27:57			
[s] Observation end time (MET)	534169722.184000	534169947.28692			
Observation end date	2014-12-05T12:27:35	2014-12-05T12:32:27			
Read mode	TIMED	TIMED			

2.3 Aspect



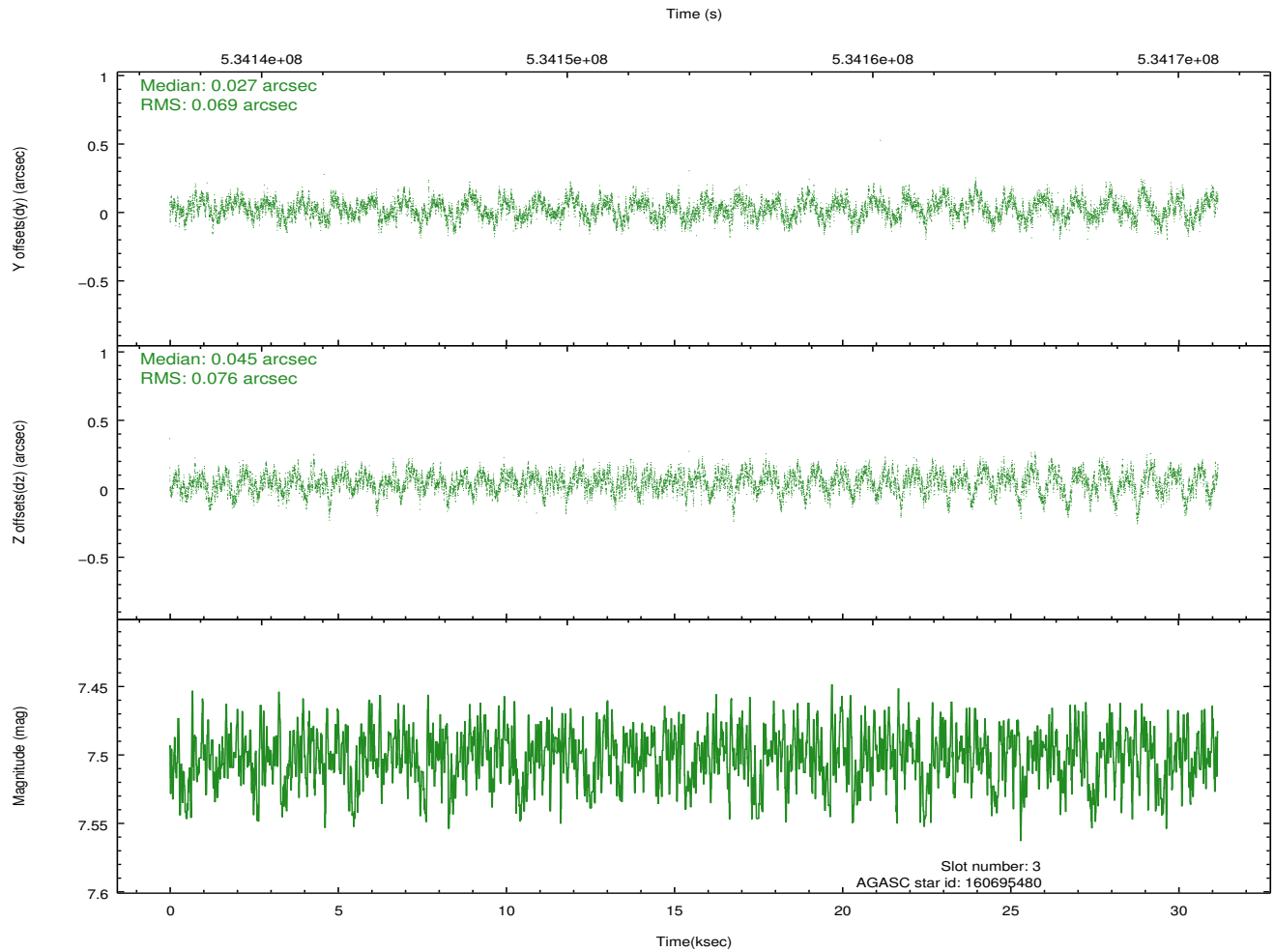
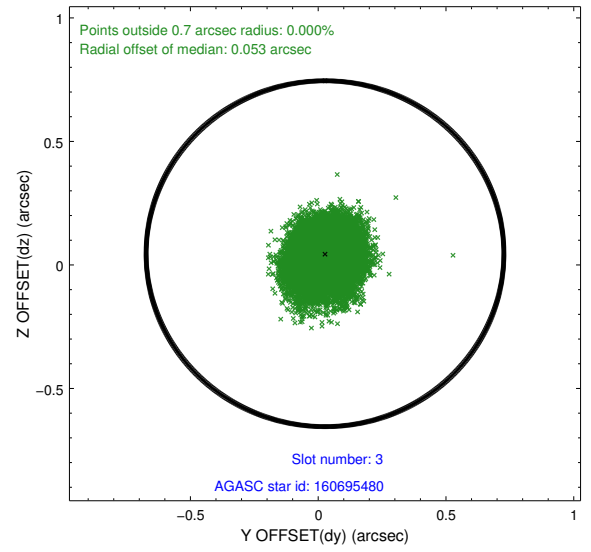
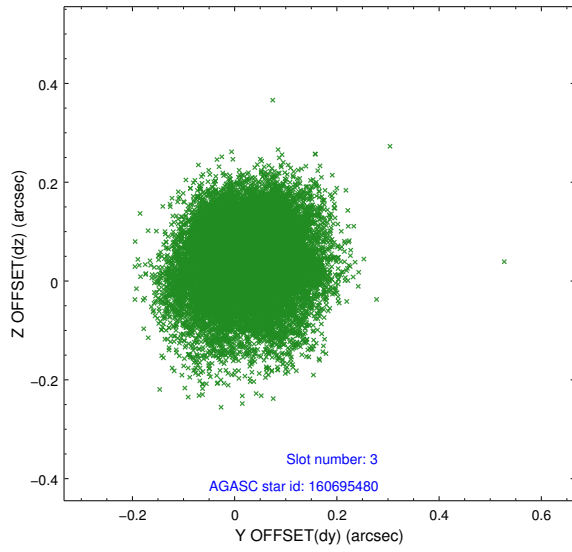


Slot Statistics

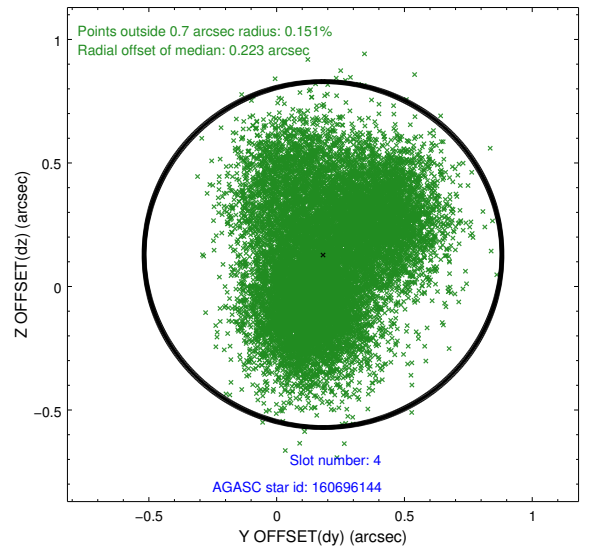
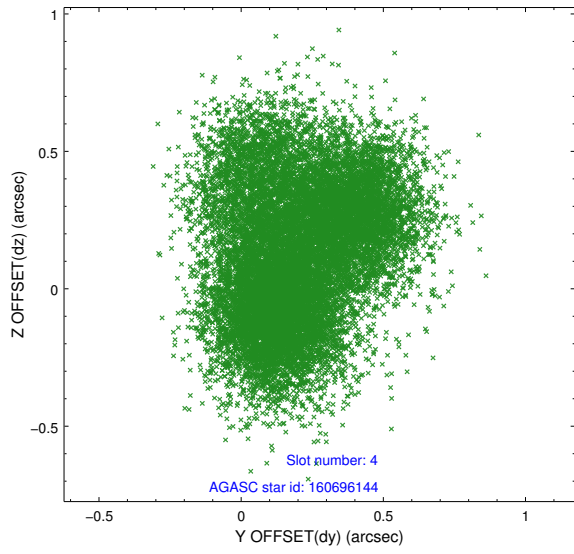
slot	status	used	id	mag	n_pts	med_dy	med_dz	dr1	dr2	ra	dec	mean_y	mean_z
0	FID		ACIS-S-1	7.11	7604	0.019	-0.041	0.017	0.030	0.000000	0.000000	914.53	-1739.01
1	FID		ACIS-S-4	7.11	7603	0.335	0.023	0.012	0.027	0.000000	0.000000	2132.26	165.17
2	FID		ACIS-S-5	7.13	7601	-0.382	0.030	0.010	0.027	0.000000	0.000000	-1834.69	158.77
3	GUIDE	used	160695480	7.50	15202	0.027	0.045	0.110	0.175	40.510029	17.757117	1409.51	-672.72
4	GUIDE	used	160696144	10.07	14596	0.181	0.129	0.330	0.496	40.171755	18.703252	-2173.45	-998.22
5	GUIDE	used	160699840	9.28	15199	0.040	0.077	0.142	0.228	40.594940	17.600781	2023.51	-520.70
6	GUIDE	used	160709888	8.28	15205	0.173	0.123	0.136	0.210	40.137843	18.599770	-1839.49	-1198.34
7	GUIDE	used	160710408	6.24	15207	-0.429	-0.374	0.123	0.191	41.079639	17.763927	1837.76	1232.64

2.4 Star Slots

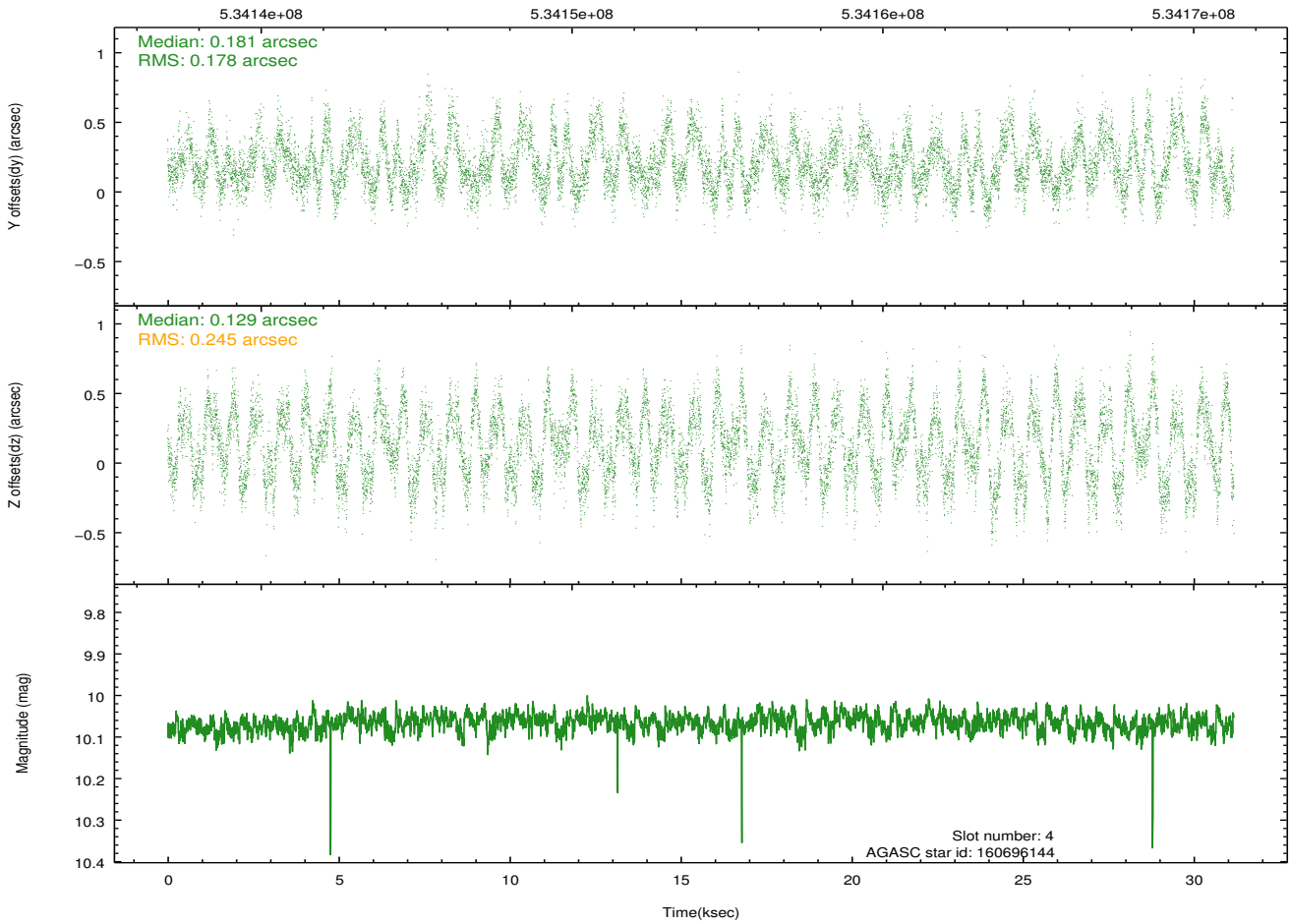
2.4.1 Slot 3



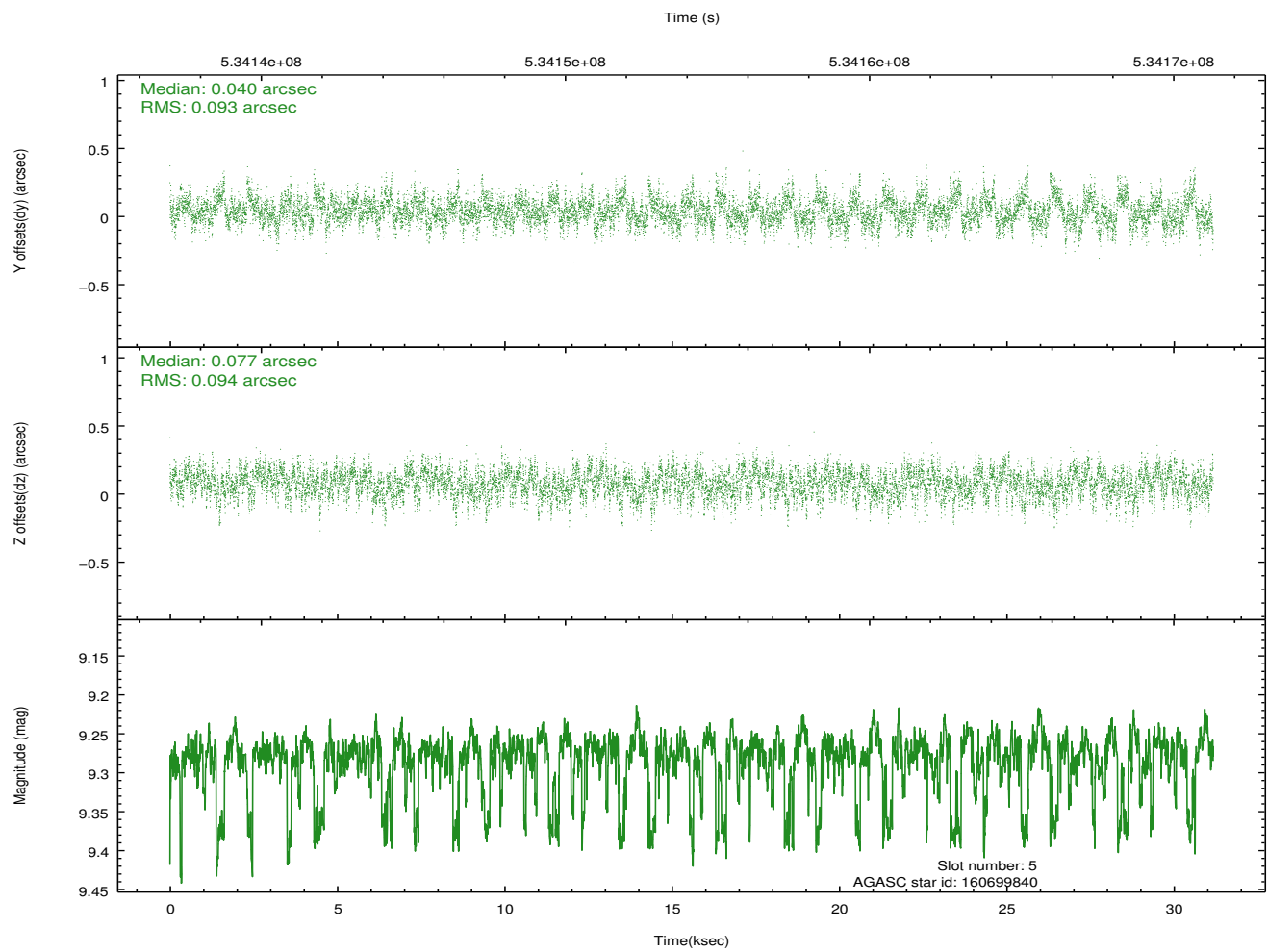
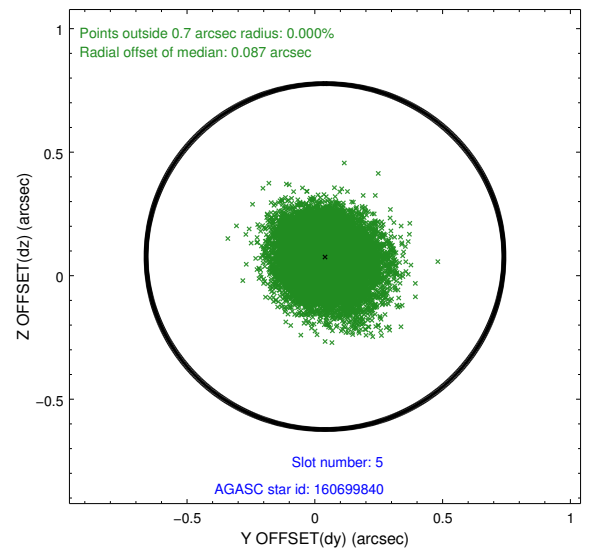
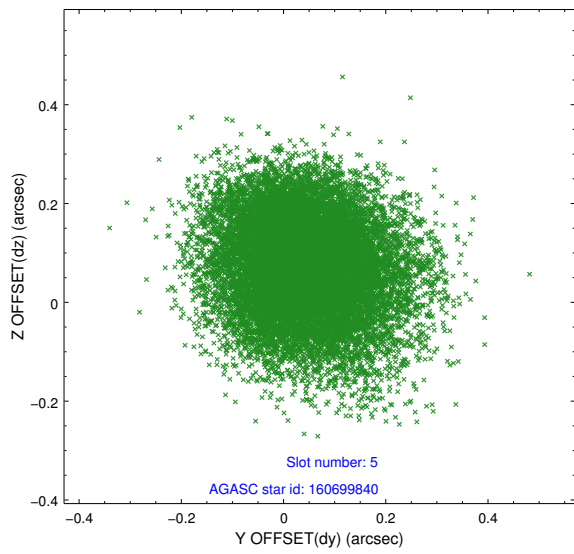
2.4.2 Slot 4



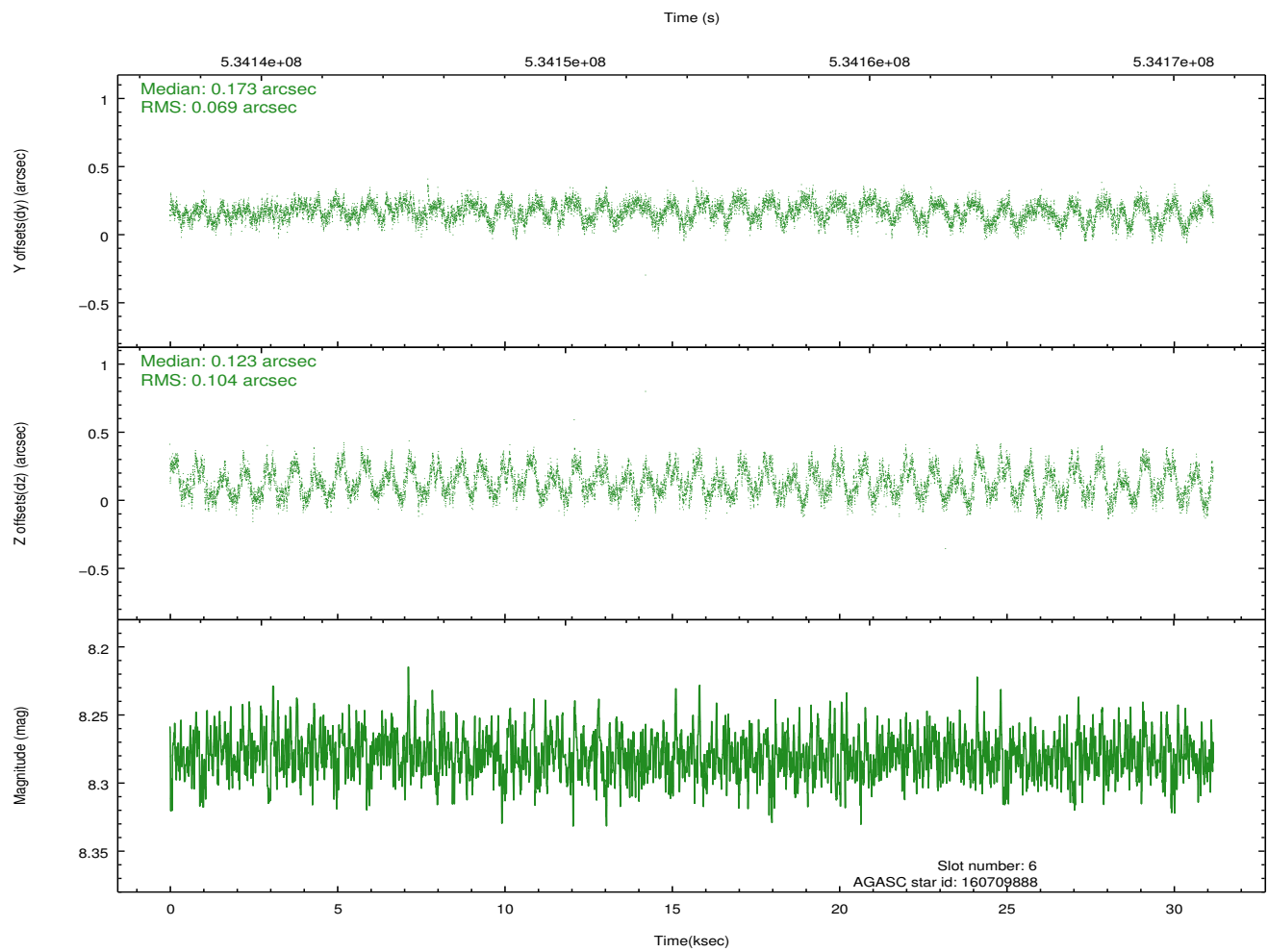
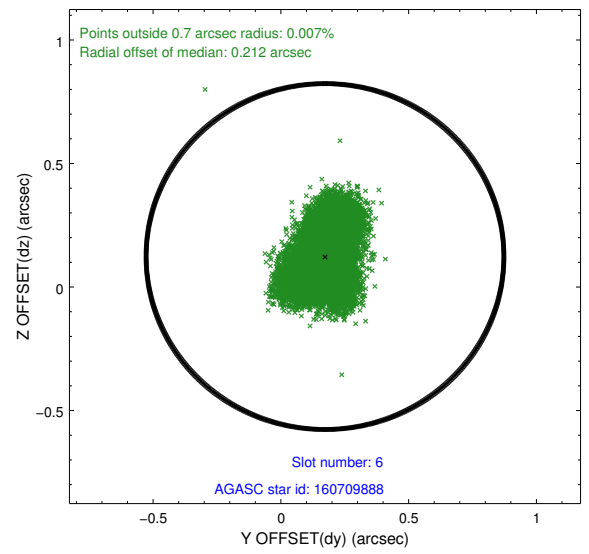
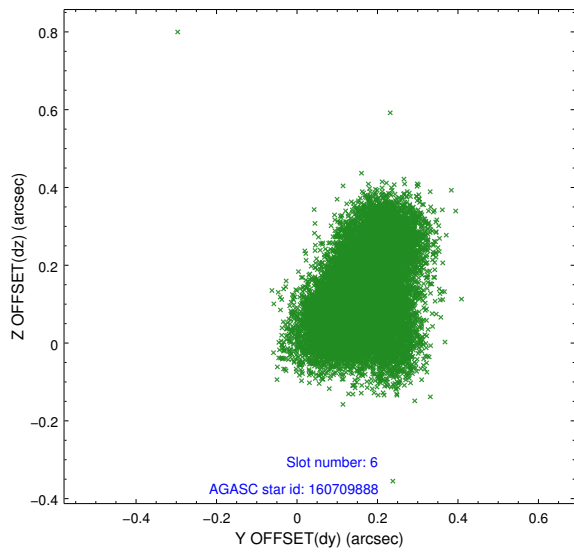
Time (s)



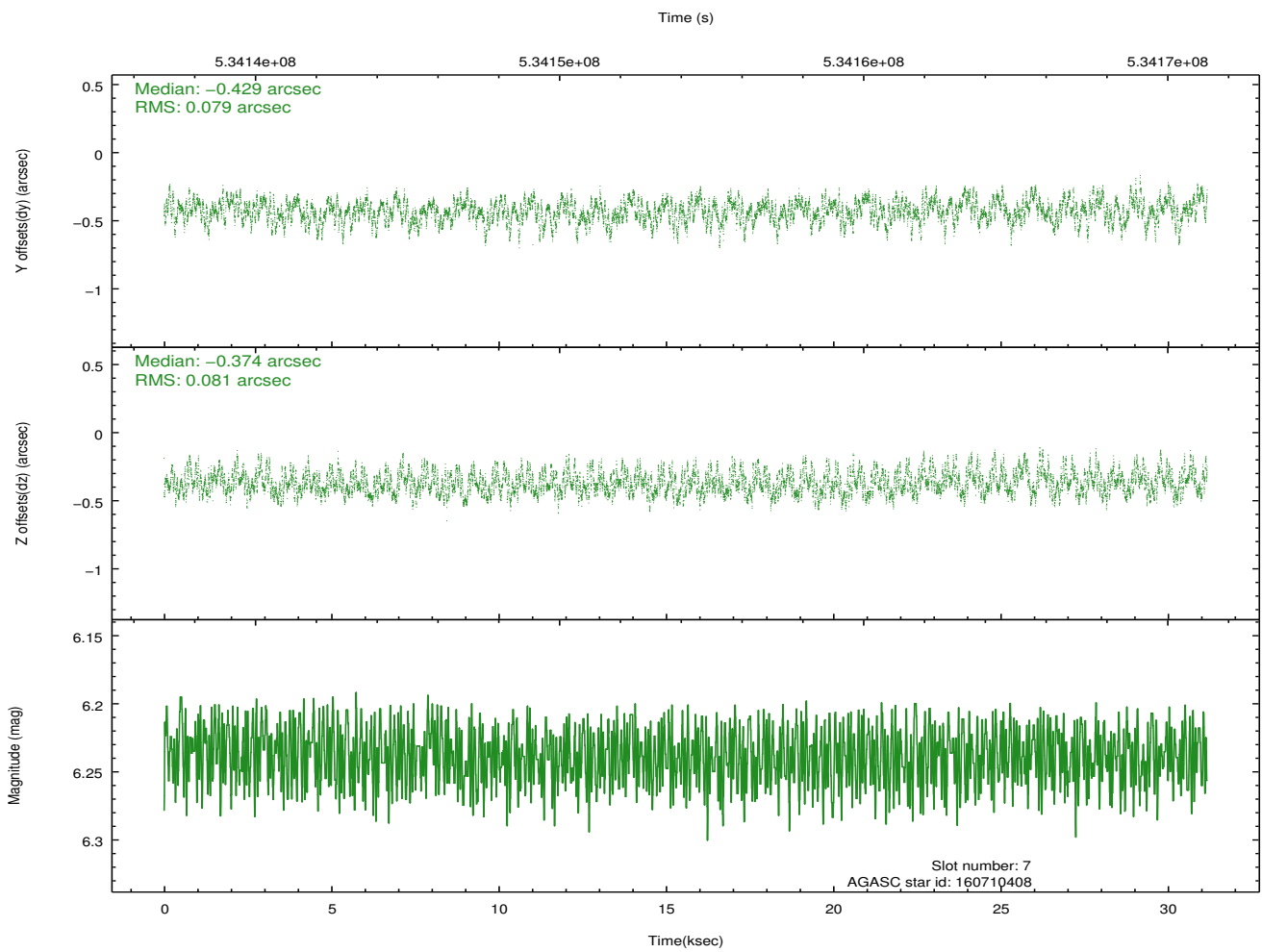
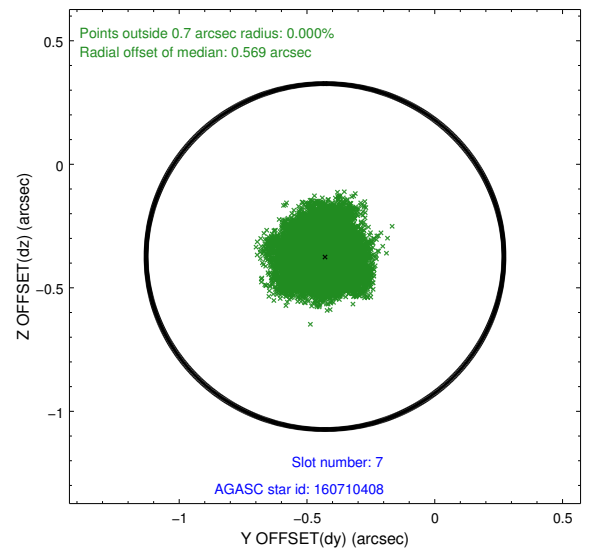
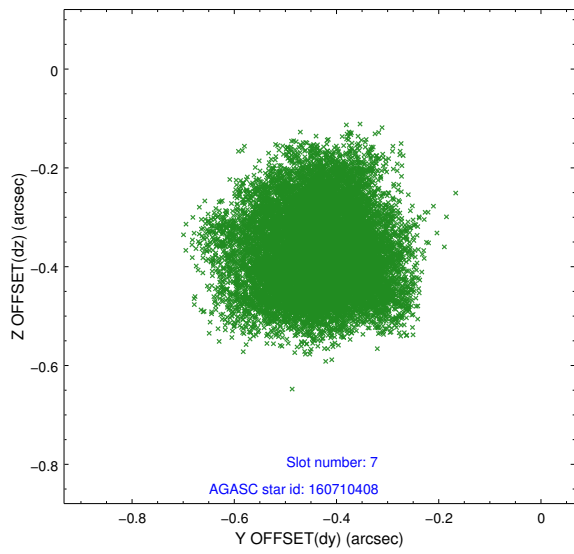
2.4.3 Slot 5



2.4.4 Slot 6

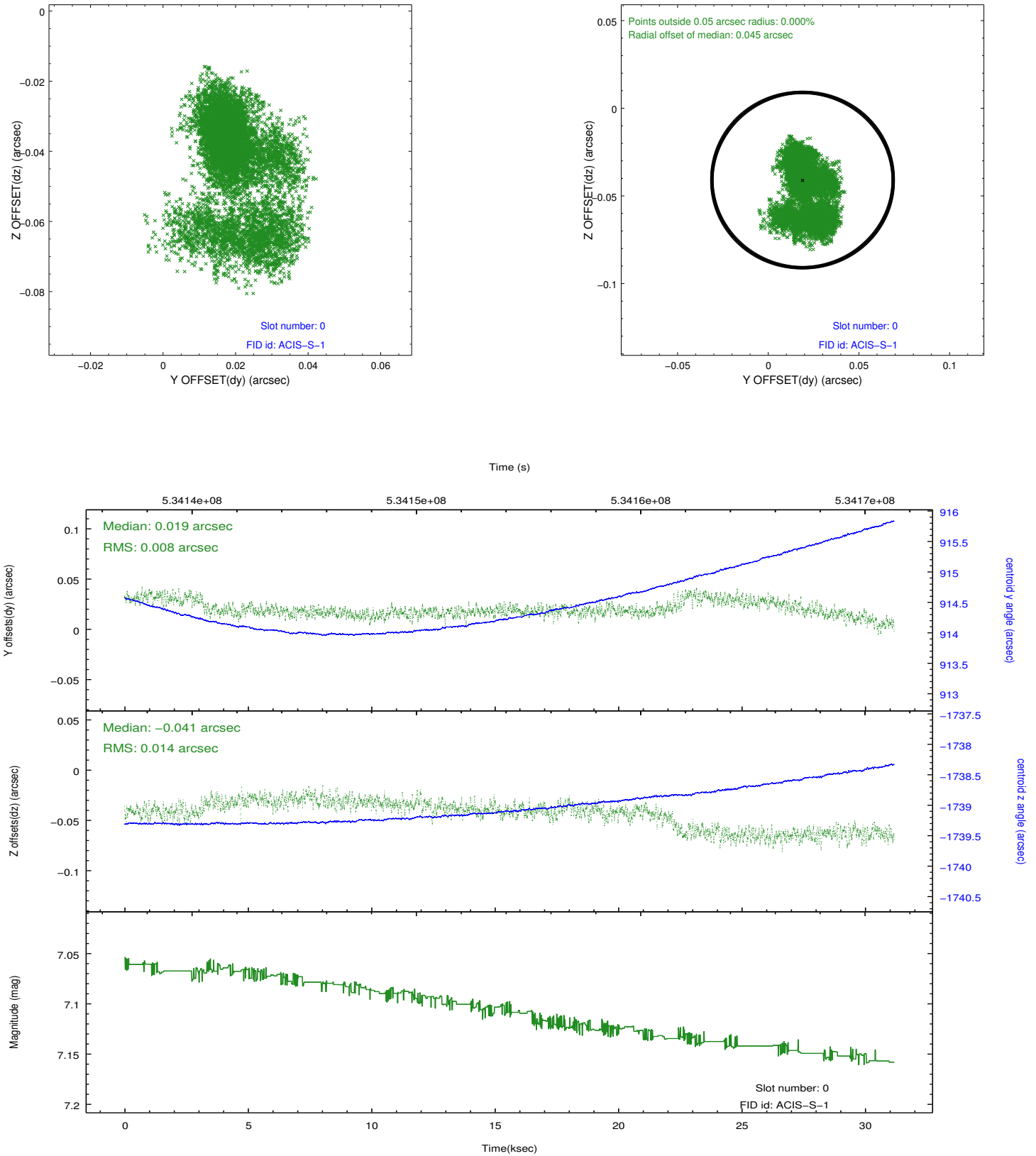


2.4.5 Slot 7

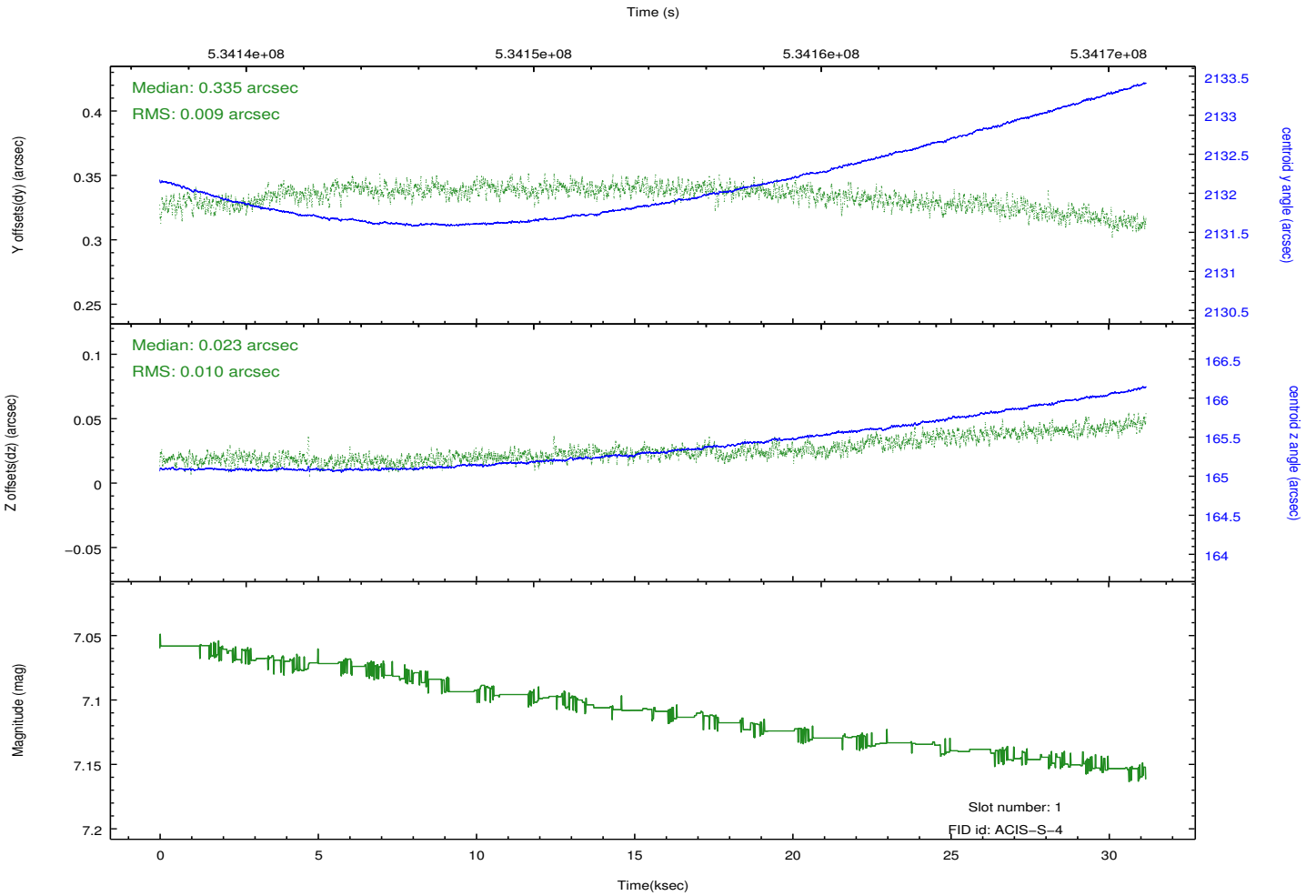
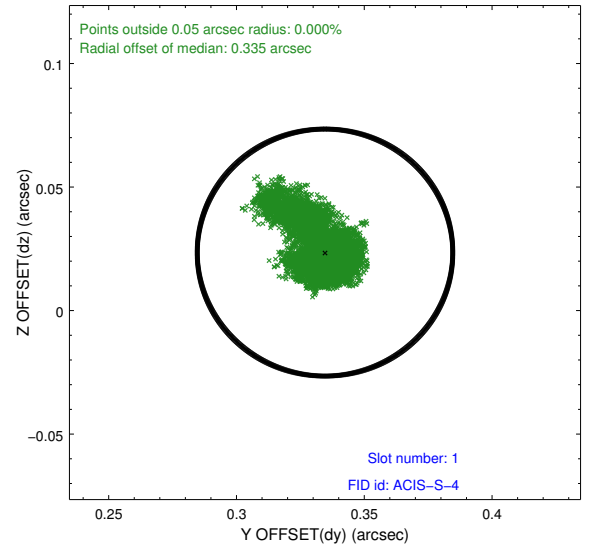
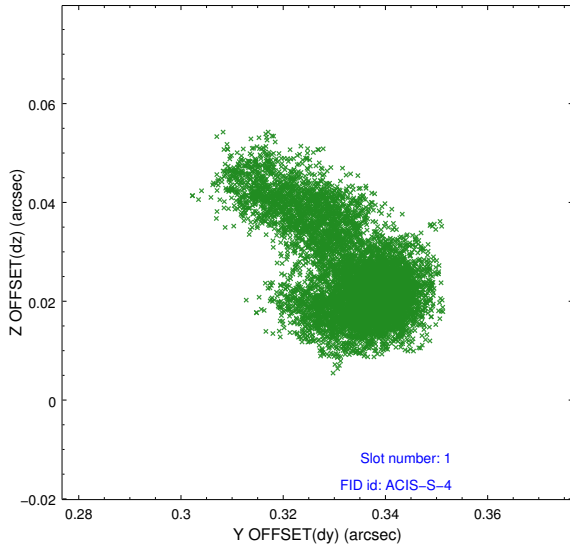


2.5 FID Slots

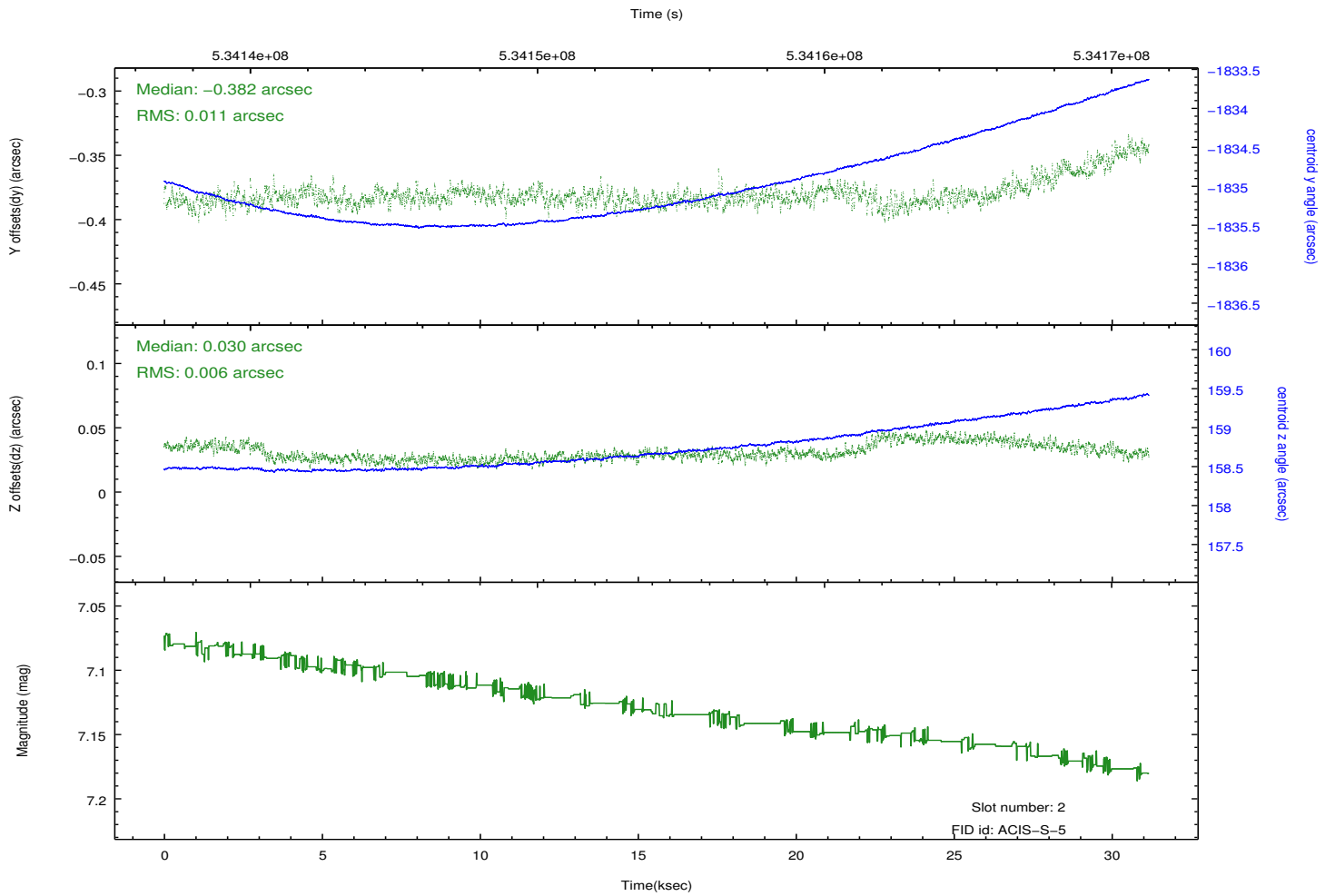
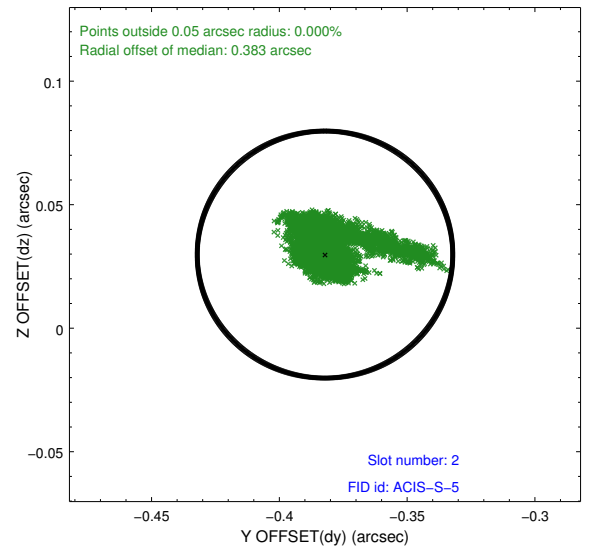
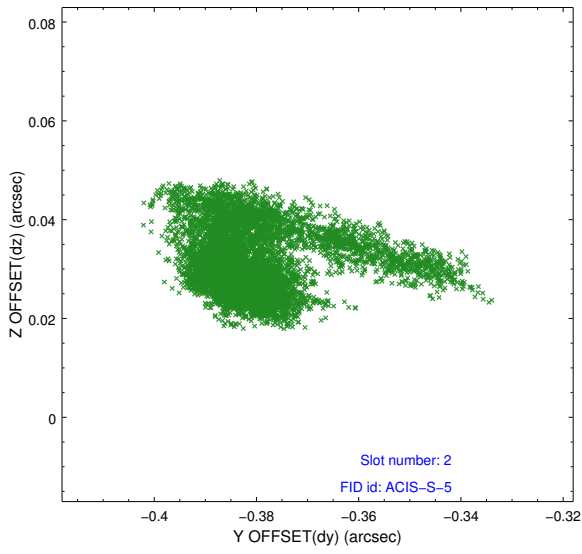
2.5.1 Slot 0



2.5.2 Slot 1



2.5.3 Slot 2



A Summary

A.1 Status

V&V Scientist	Jen Lauer
V&V Date (YYYY-MM-DD)	2014.12.08
V&V Edition	1
V&V Disposition and Status	OK
V&V Charge Time	31.068200238943

A.2 Comments

Joint Proposal: NRAO