

# V&V Reference Report

## L2 ASCDS Version : 10.3.1

Observation 17559 - L2 Version 2  
Chandra X-Ray Center

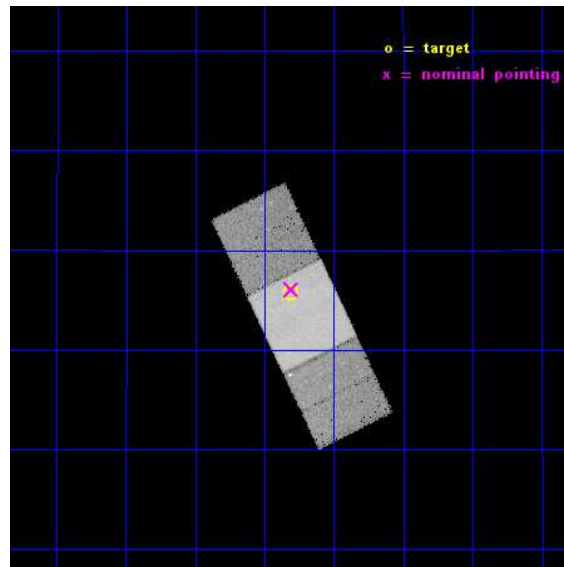
L2 Processing Date : Dec 17 2014

## Contents

<b>1</b>	<b>Front</b>	<b>2</b>
<b>2</b>	<b>OBI</b>	<b>3</b>
2.1	OBI . . . . .	3
2.1.1	Images . . . . .	3
2.1.2	Bias . . . . .	3
2.1.3	Parameters . . . . .	4
2.1.4	Events . . . . .	4
2.2	Compared Parameters . . . . .	5
2.3	Aspect . . . . .	6
2.4	Star Slots . . . . .	9
2.4.1	Slot 3 . . . . .	9
2.4.2	Slot 4 . . . . .	10
2.4.3	Slot 5 . . . . .	11
2.4.4	Slot 7 . . . . .	12
2.5	FID Slots . . . . .	13
2.5.1	Slot 0 . . . . .	13
2.5.2	Slot 1 . . . . .	14
2.5.3	Slot 2 . . . . .	15
<b>A</b>	<b>Summary</b>	<b>16</b>
A.1	Status . . . . .	16
A.2	Comments . . . . .	16

# 1 Front

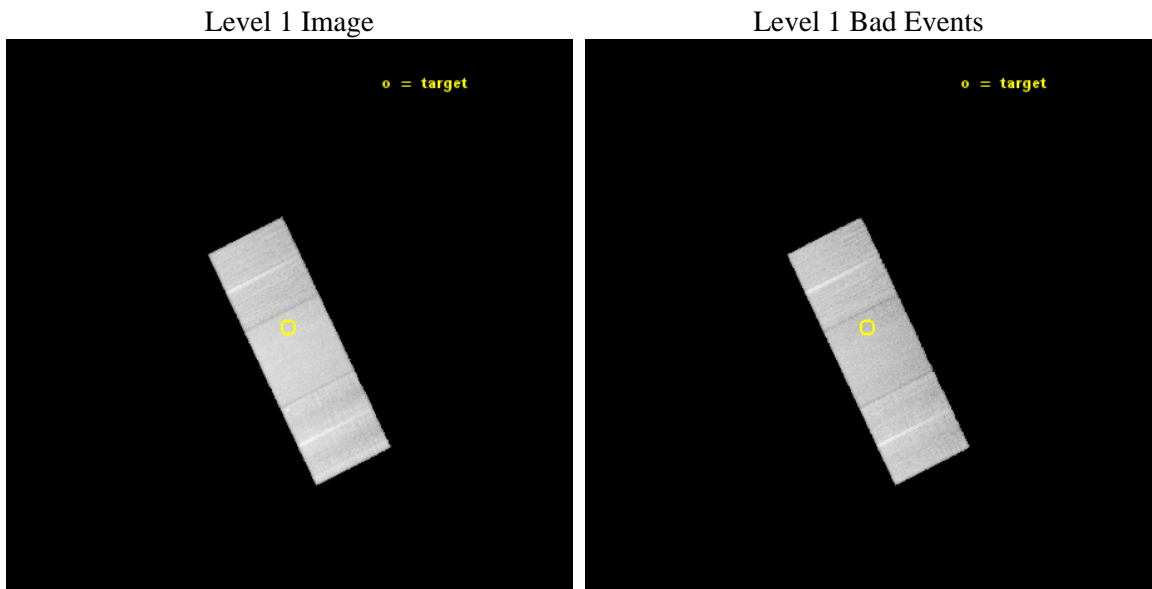
seq_num	401686	Sequence number
obs_id	17559	Observation id
title	A second HLX-1-like object in CXO J122518.6+144545	Proposal title
observer	MSc Marianne Heida	Principal investigator
object	CXO J122518.6+144545	Source name
dtcycle	0	&#160
cycle	P	events from which exps? Prim/Second/Both
ra_targ	186.327917	Observer's specified target RA [deg]
dec_targ	14.762694	Observer's specified target Dec [deg]
ra_nom	186.32666861666	Nominal RA [deg]
dec_nom	14.76799147124	Nominal Dec [deg]
roll_nom	63.935229126283	Nominal Roll [deg]
revision	2	Processing version of data
ontime	40114.000308514	Sum of GTIs [s]
livetime	39589.881362986	Livetime [s]
ontime6	40110.859318197	Sum of GTIs [s]
ontime7	40114.000308514	Sum of GTIs [s]
ontime8	40110.859338164	Sum of GTIs [s]
l2events	172149	Number of level 2 events



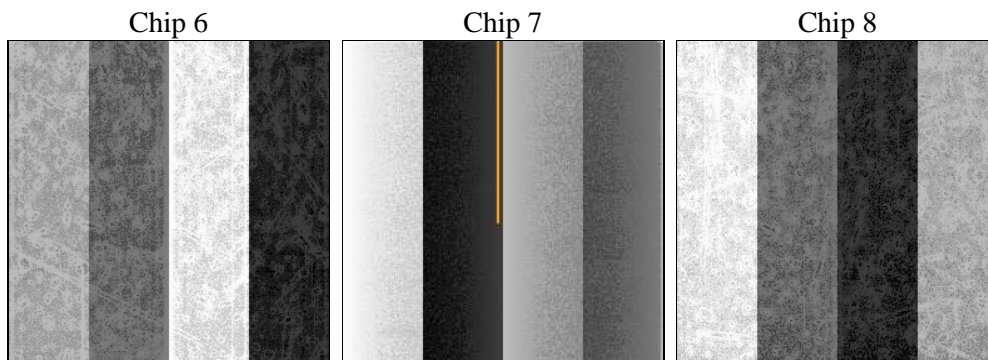
## 2 OBI

### 2.1 OBI

#### 2.1.1 Images



#### 2.1.2 Bias



### 2.1.3 Parameters

obi_num	0	Obi number	sched_exp_time	40000.000000	[s] Scheduled observation exposure time
ascdsver	10.3.1	Processing system revision	ontime	40114.000308514	Sum of GTIs [s]
caldsver	4.6.5	&#160	ontime6	40110.859318197	Sum of GTIs [s]
date	2014-12-17T19:41:03	Date and time of file creation	ontime7	40114.000308514	Sum of GTIs [s]
revision	2	Processing version of data	ontime8	40110.859338164	Sum of GTIs [s]
			l1events	771502	Number of level 1 events

### 2.1.4 Events

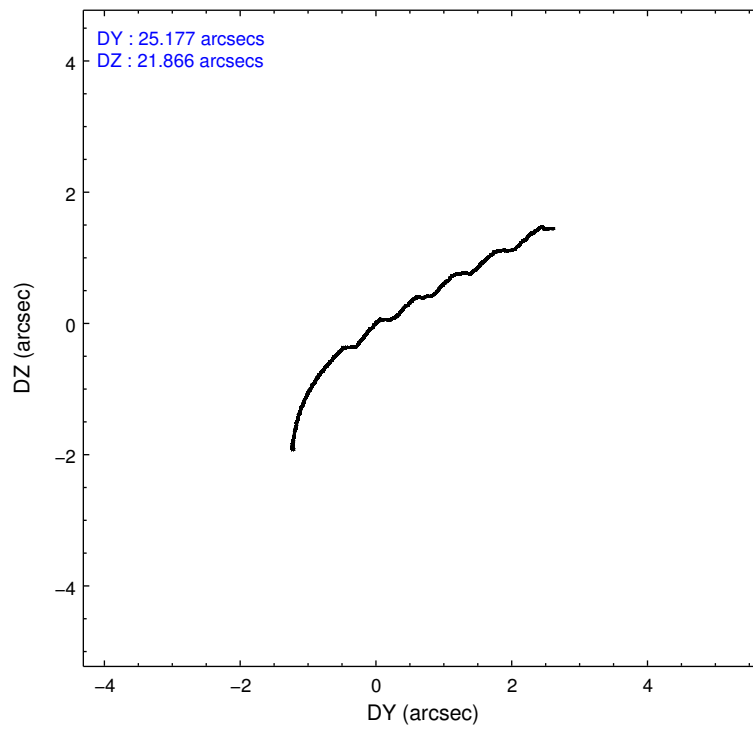
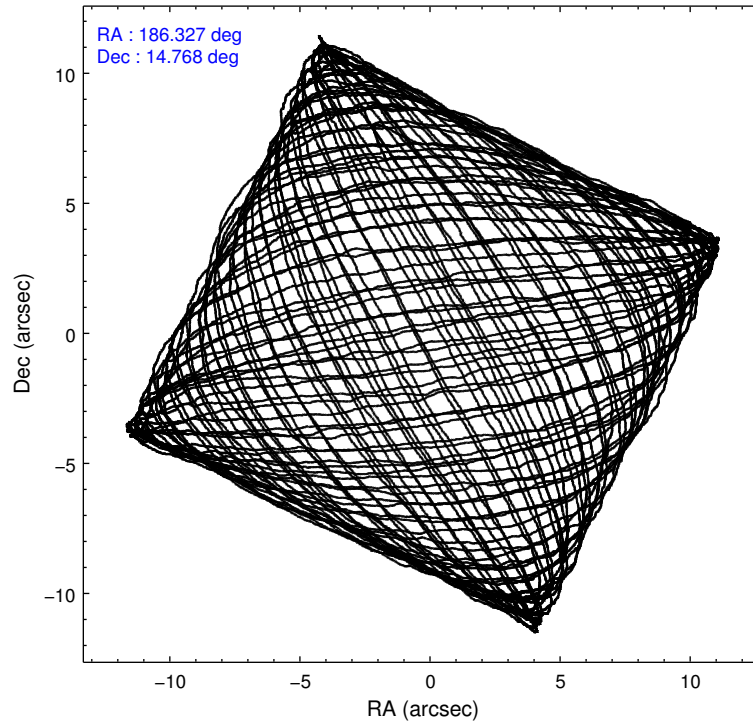
	<b>ccd 6</b>	<b>ccd 7</b>	<b>ccd 8</b>
level 1 events	210255	281150	280097
rejected events	183959	157361	201655
rejected %	<b>87%</b>	<b>55%</b>	<b>71%</b>

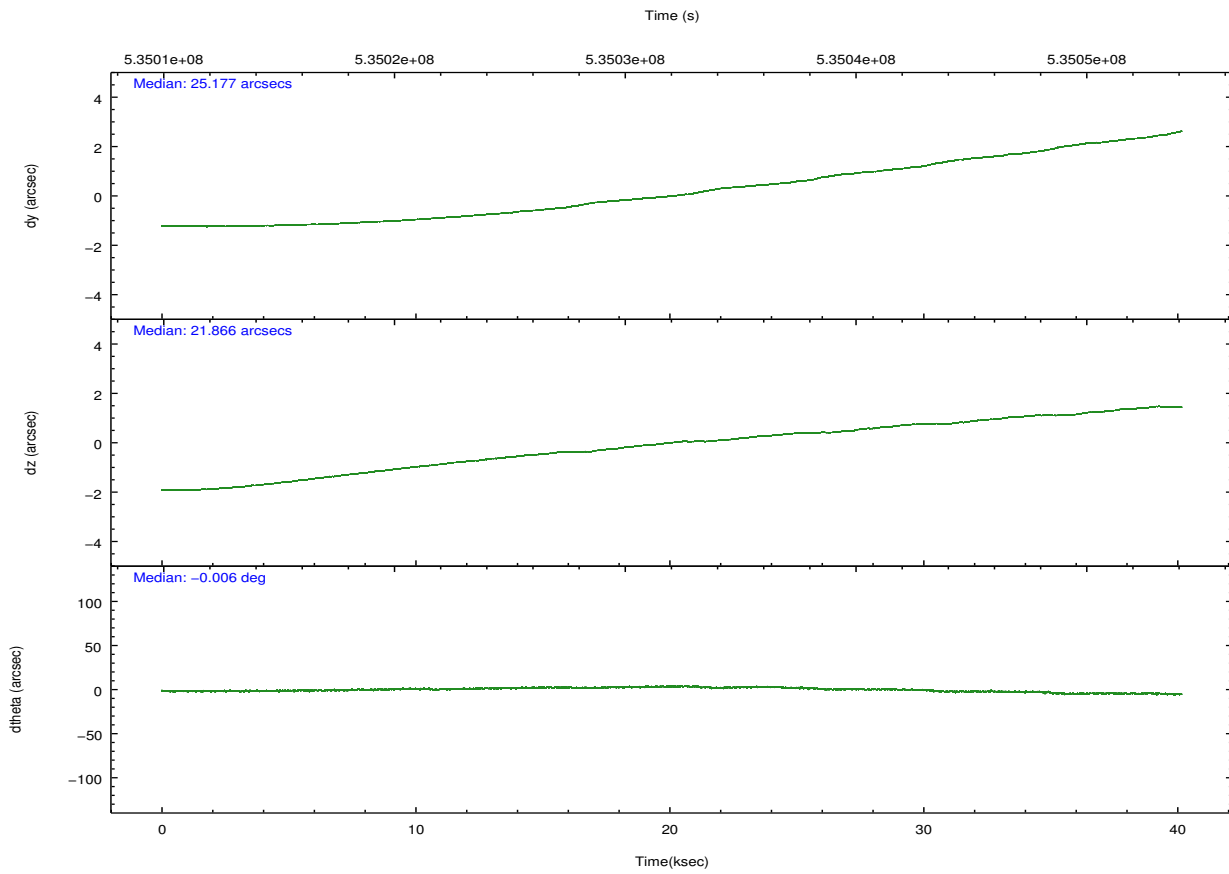
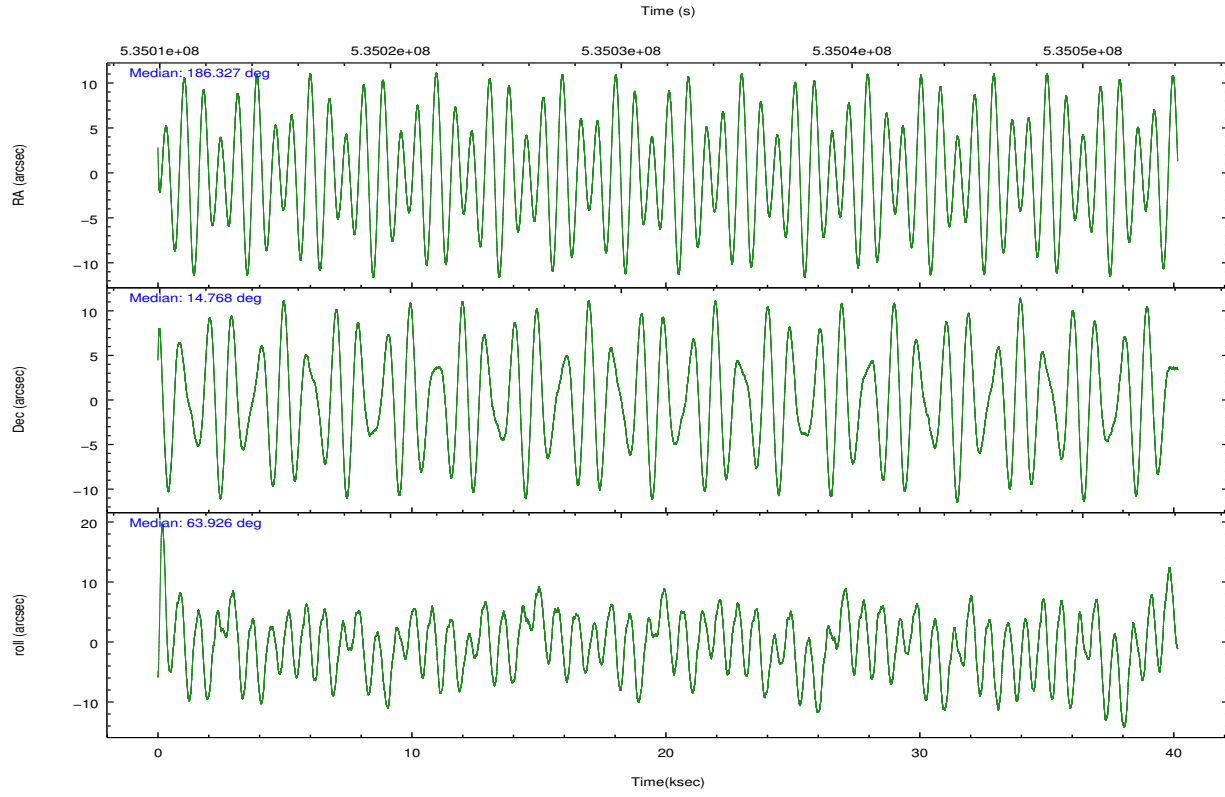
	<b>ccd 6</b>	<b>ccd 7</b>	<b>ccd 8</b>
grade 0 events	9205	11126	23580
	4%	3%	8%
grade 1 events	86	370	211
	0%	0%	0%
grade 2 events	5958	25618	18569
	2%	9%	6%
grade 3 events	2719	10602	7891
	1%	3%	2%
grade 4 events	2607	10468	7564
	1%	3%	2%
grade 5 events	10976	28376	15661
	5%	10%	5%
grade 6 events	5809	65996	20843
	2%	23%	7%
grade 7 events	172895	128594	185778
	82%	45%	66%

## 2.2 Compared Parameters

Parameter	Planned	Actual	Parameter	Planned	Actual
Instrument	ACIS	ACIS	Obspar format version number	7	7
Detector	ACIS-678	ACIS-678	Obspar file type	PREDICTED	ACTUAL
Grating	NONE	NONE	Obspar update status	NONE	UPDATED
Data mode	VFAINT	VFAINT	CCD I0 on	N	N
Observation mode	POINTING	POINTING	CCD I1 on	N	N
[deg] Pointing RA	186.328981	186.3266686166627	CCD I2 on	N	N
[deg] Pointing Dec	14.740639	14.7679914712399	CCD I3 on	N	N
[deg] Pointing Roll	63.778022	63.93522912628286	CCD S0 on	N	N
[mm] SIM focus pos	-0.684267	-0.6828225247311905	CCD S1 on	N	N
[mm] SIM defocus	0	0.001444936568705701	CCD S2 on	O2	Y
[mm] SIM translation stage pos	-190.132523	-190.1400660498719	CCD S3 on	Y	Y
[mm] SIM translation stage offset	0	0.00754346686406393	CCD S4 on	O1	Y
[s] Observation start time (MET)	535012090.184000	535011043.88384	CCD S5 on	N	N
Observation start date	2014-12-15T06:27:03	2014-12-15T06:10:43	Number of optional ACIS chips dropped	0	0
[s] Observation end time (MET)	535052090.184000	535052849.02367	On-chip summing requested	N	N
Observation end date	2014-12-15T17:33:43	2014-12-15T17:47:29	Subarray requested	NONE	NONE
Read mode	TIMED	TIMED	Alternating exposures requested	N	N
			[s] Primary exposure time	0.000000	3.1

## 2.3 Aspect





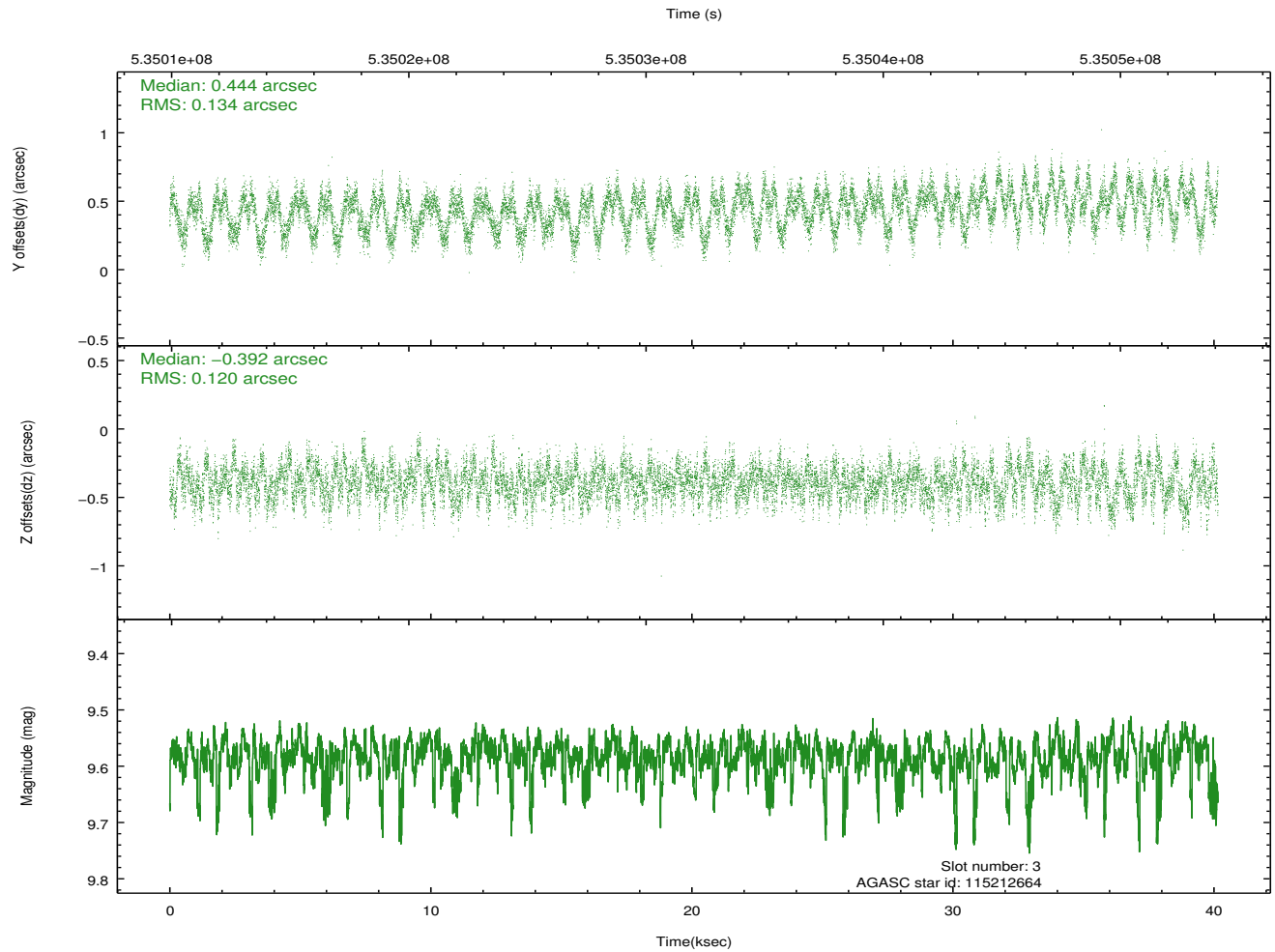
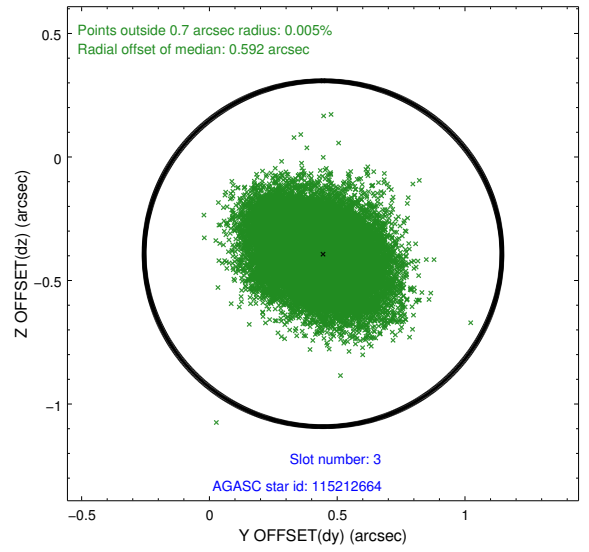
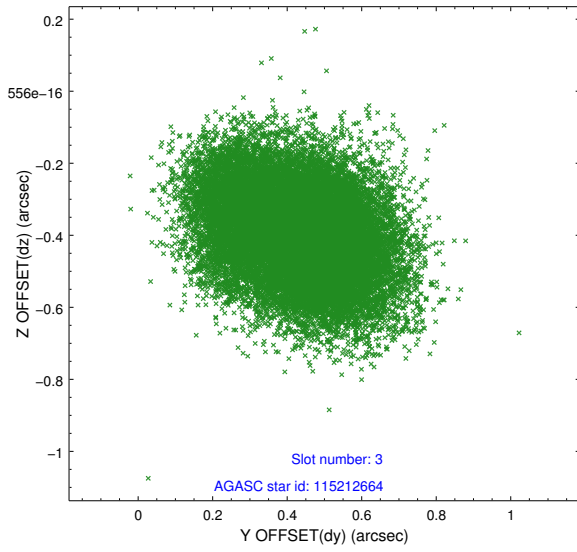
### Slot Statistics

slot	status	used	id	mag	n_pts	med_dy	med_dz	dr1	dr2	ra	dec	mean_y	mean_z
0	FID		ACIS-S-1	7.09	9795	0.077	-0.048	0.021	0.044	0.000000	0.000000	917.49	-1738.95
1	FID		ACIS-S-5	7.13	9795	-0.214	0.026	0.025	0.033	0.000000	0.000000	-1831.82	158.62
2	FID		ACIS-S-6	7.23	9795	0.116	0.035	0.038	0.063	0.000000	0.000000	383.03	802.62
3	GUIDE	used	115212664	9.58	19532	0.444	-0.392	0.195	0.305	186.112214	14.500161	-1110.81	295.30
4	GUIDE	used	115344416	7.91	19586	0.128	-0.241	0.163	0.293	186.624628	14.572004	-88.36	-1191.27
5	GUIDE	used	115349328	8.73	19584	0.153	0.490	0.194	0.321	186.721628	14.043786	-1643.05	-2337.51
6	OMITTED			0.00	0	0.000	0.000	0.000	0.000	0.000000	0.000000	0.00	0.00
7	GUIDE	used	189403320	10.01	19406	-0.687	0.152	0.313	0.748	186.650538	15.117423	1711.11	-401.95

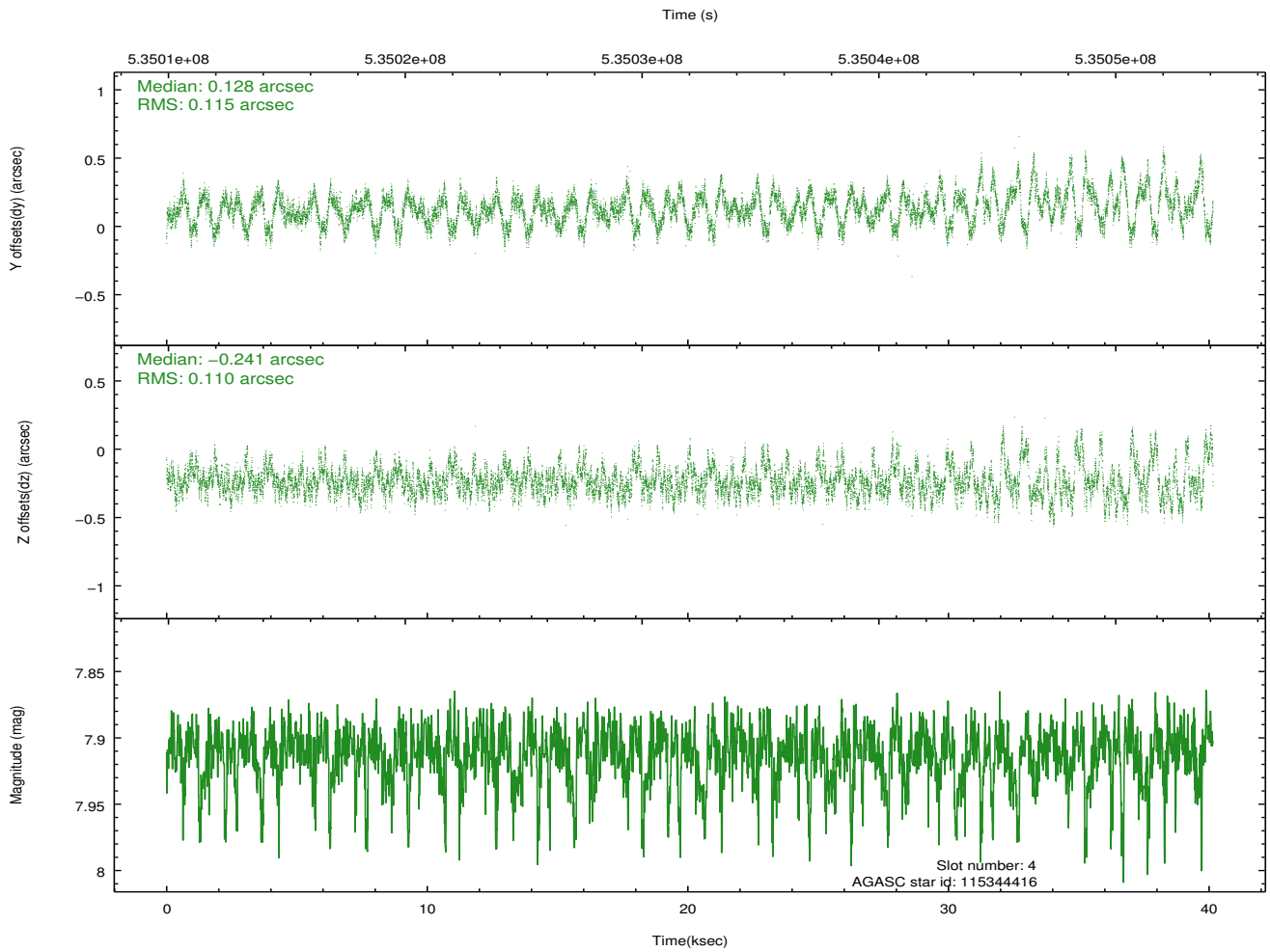
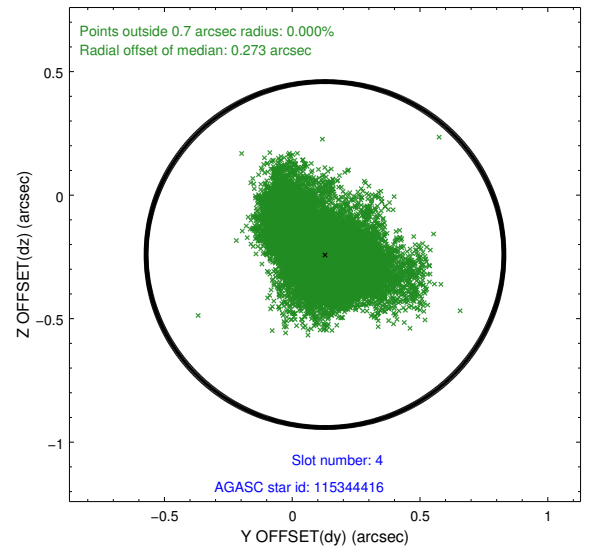
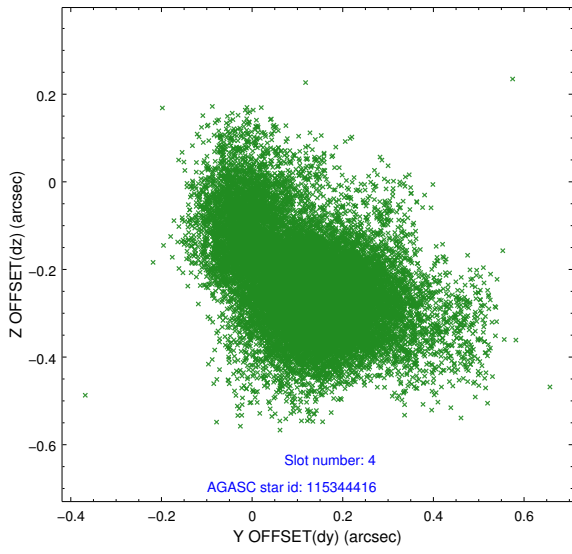
∞

## 2.4 Star Slots

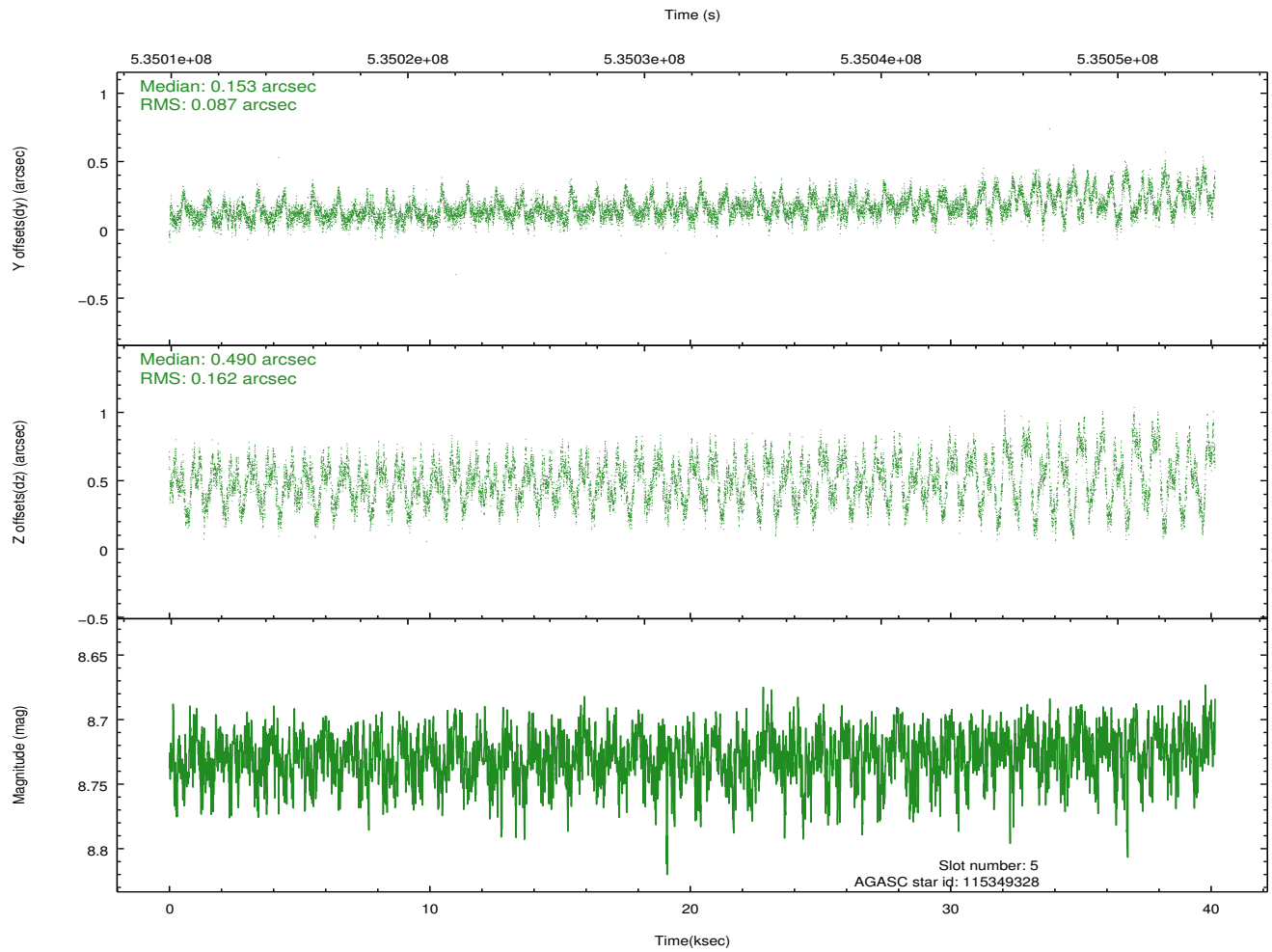
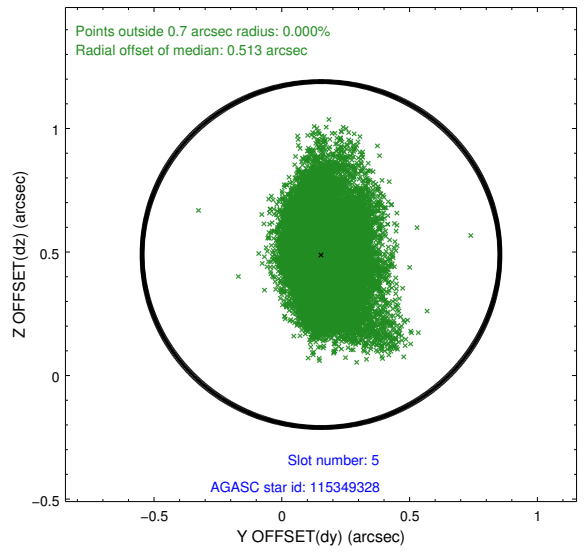
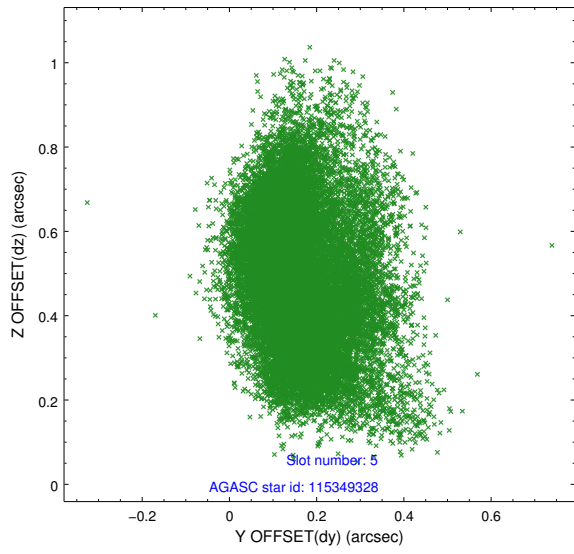
### 2.4.1 Slot 3



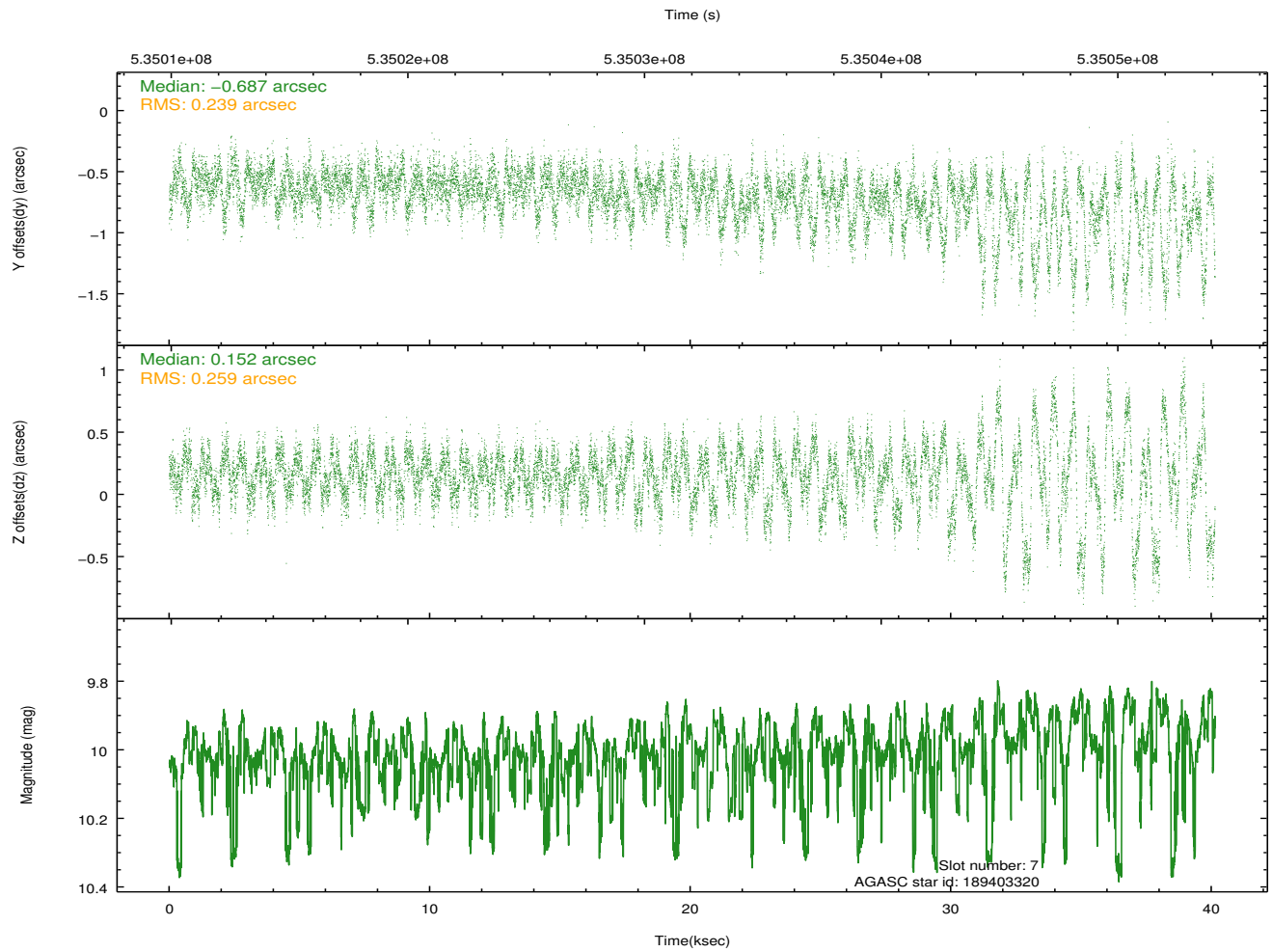
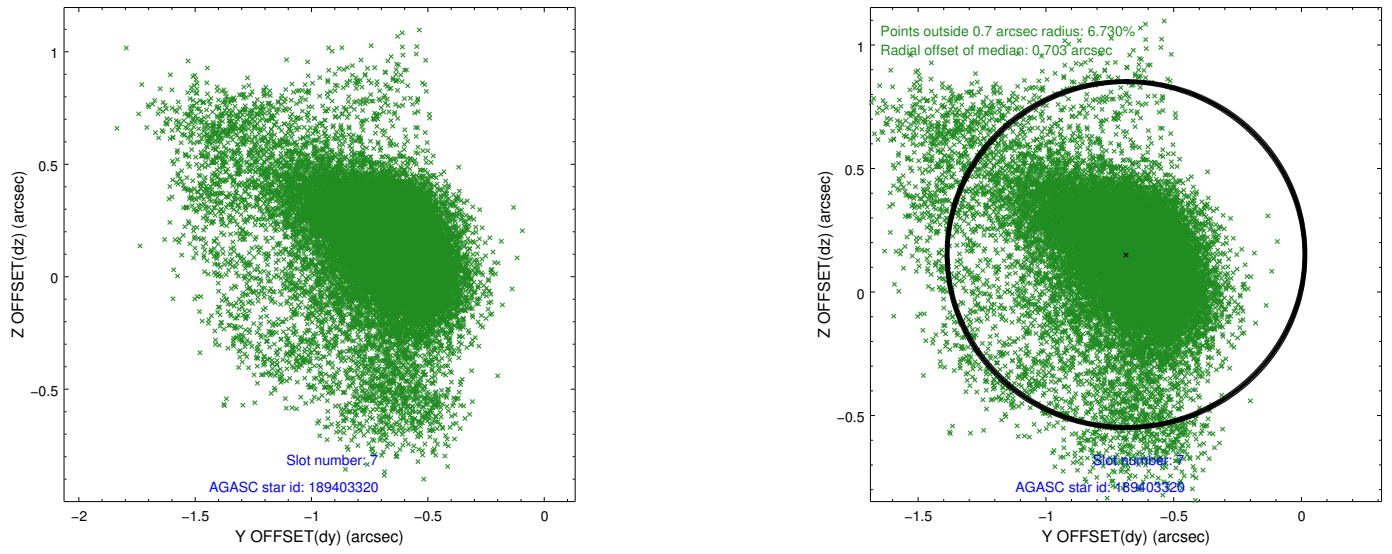
### 2.4.2 Slot 4



### 2.4.3 Slot 5

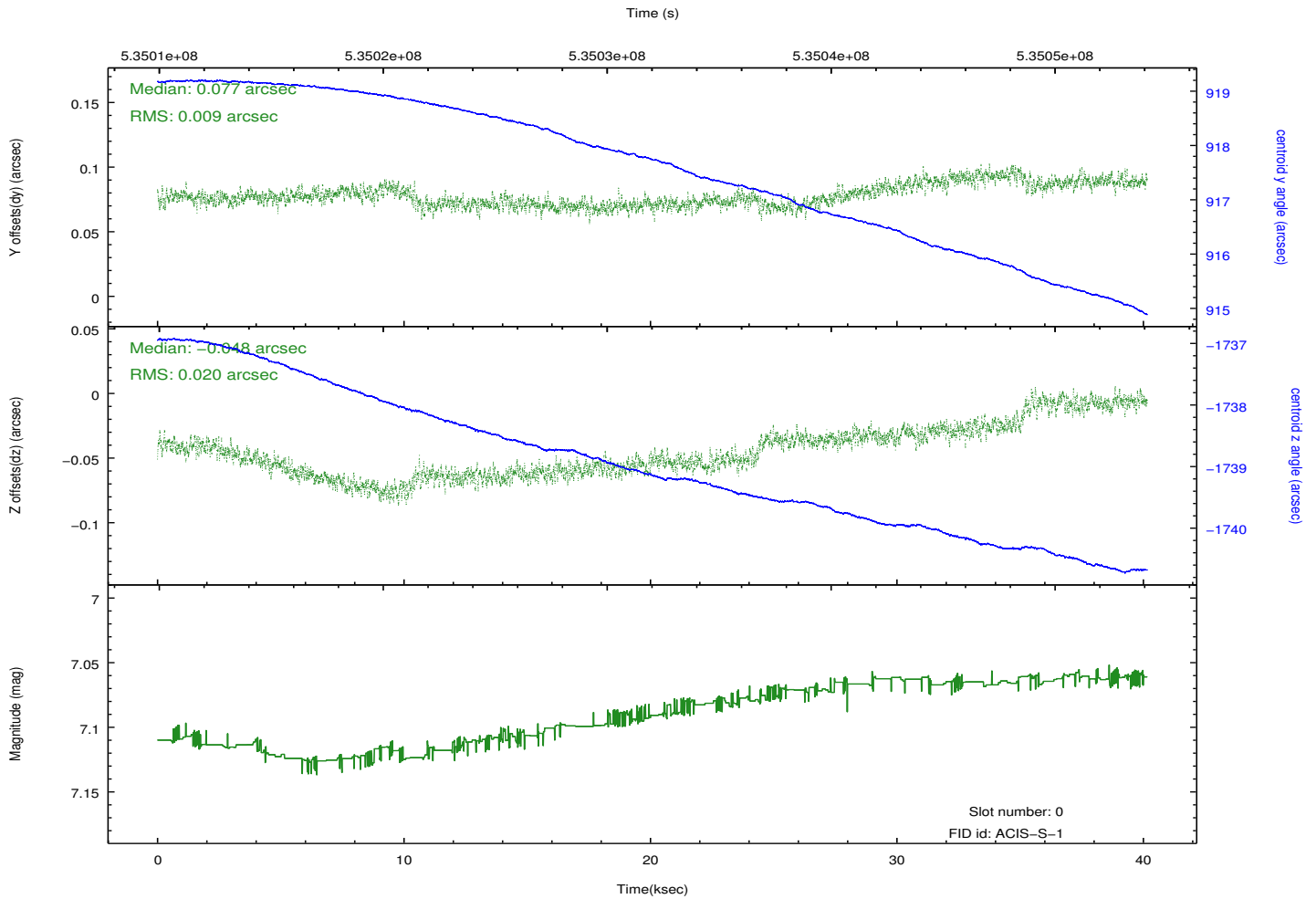
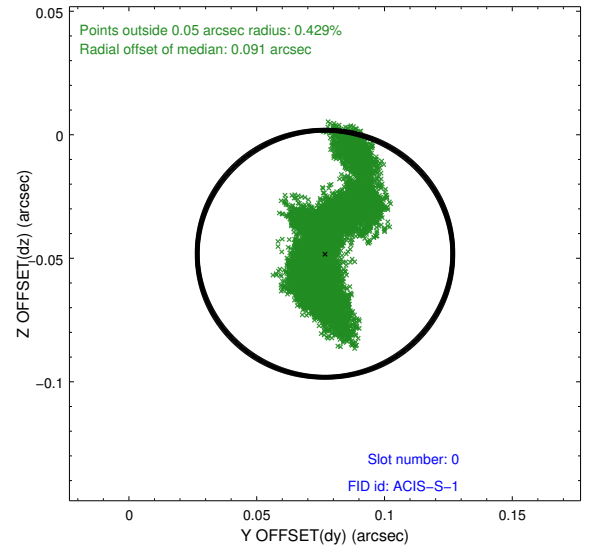
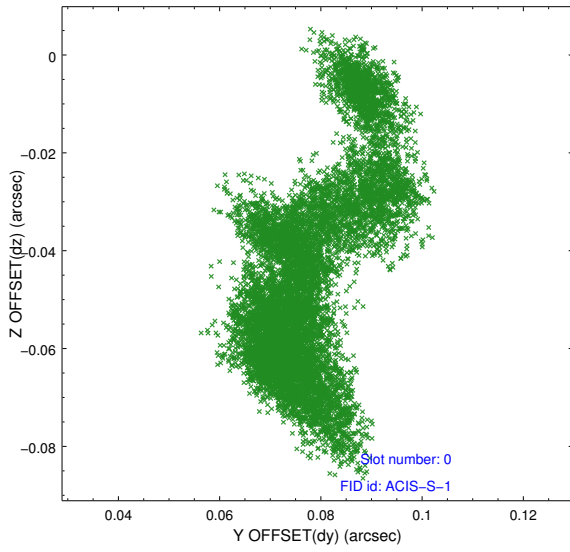


### 2.4.4 Slot 7

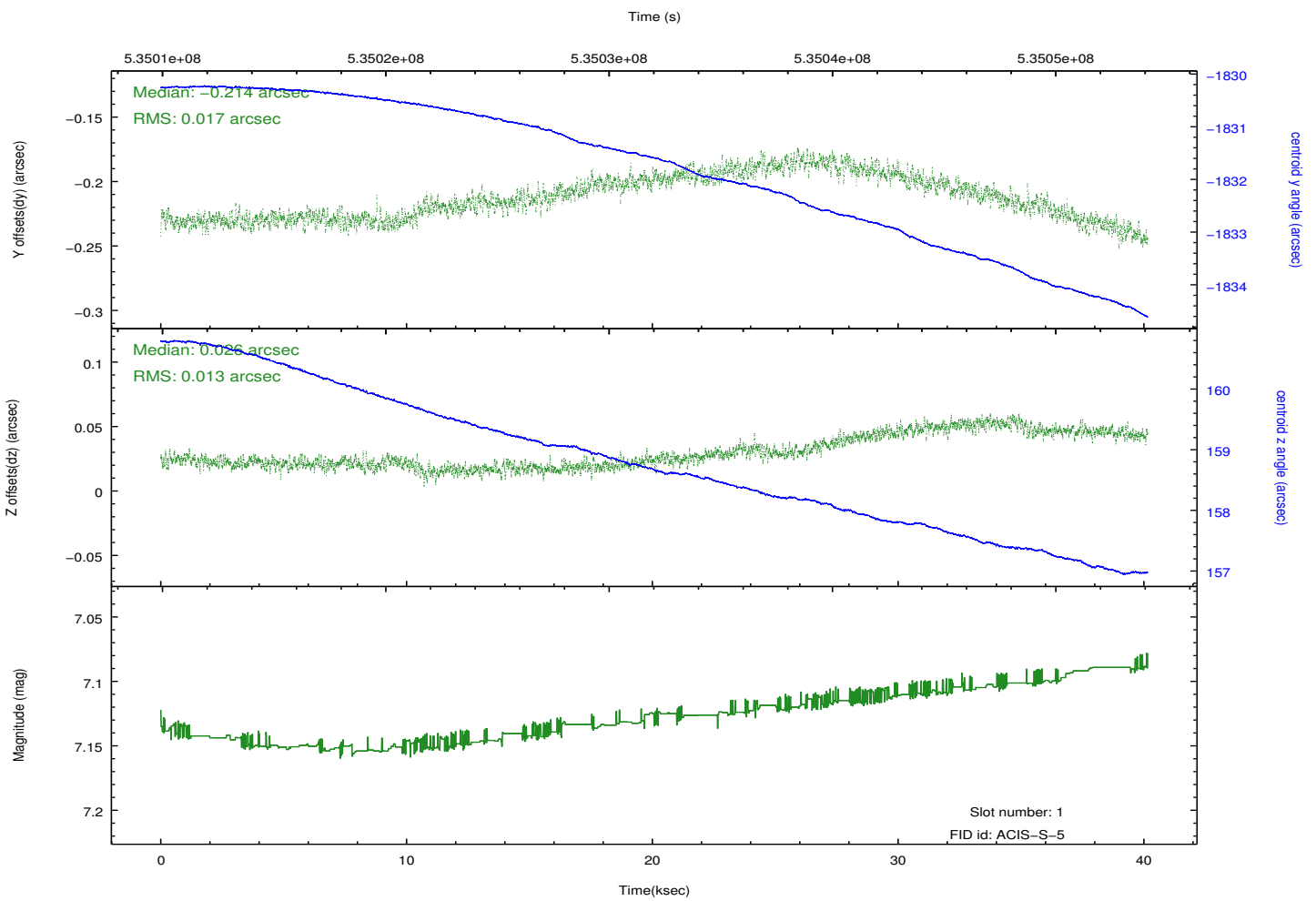
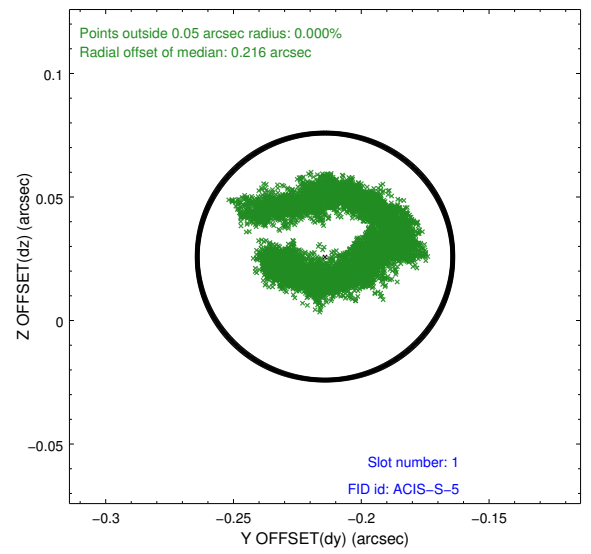
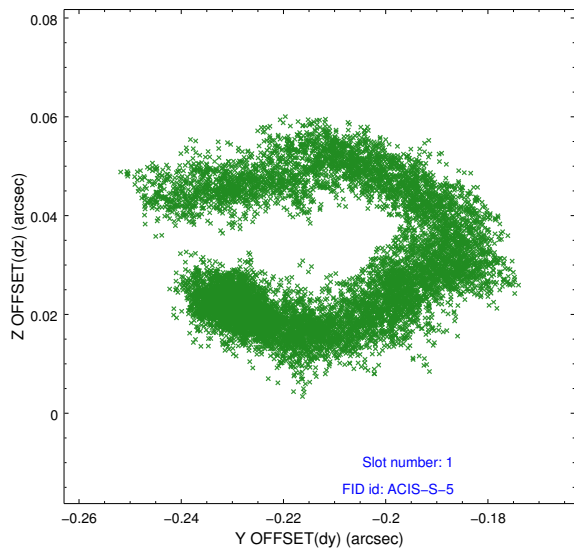


## 2.5 FID Slots

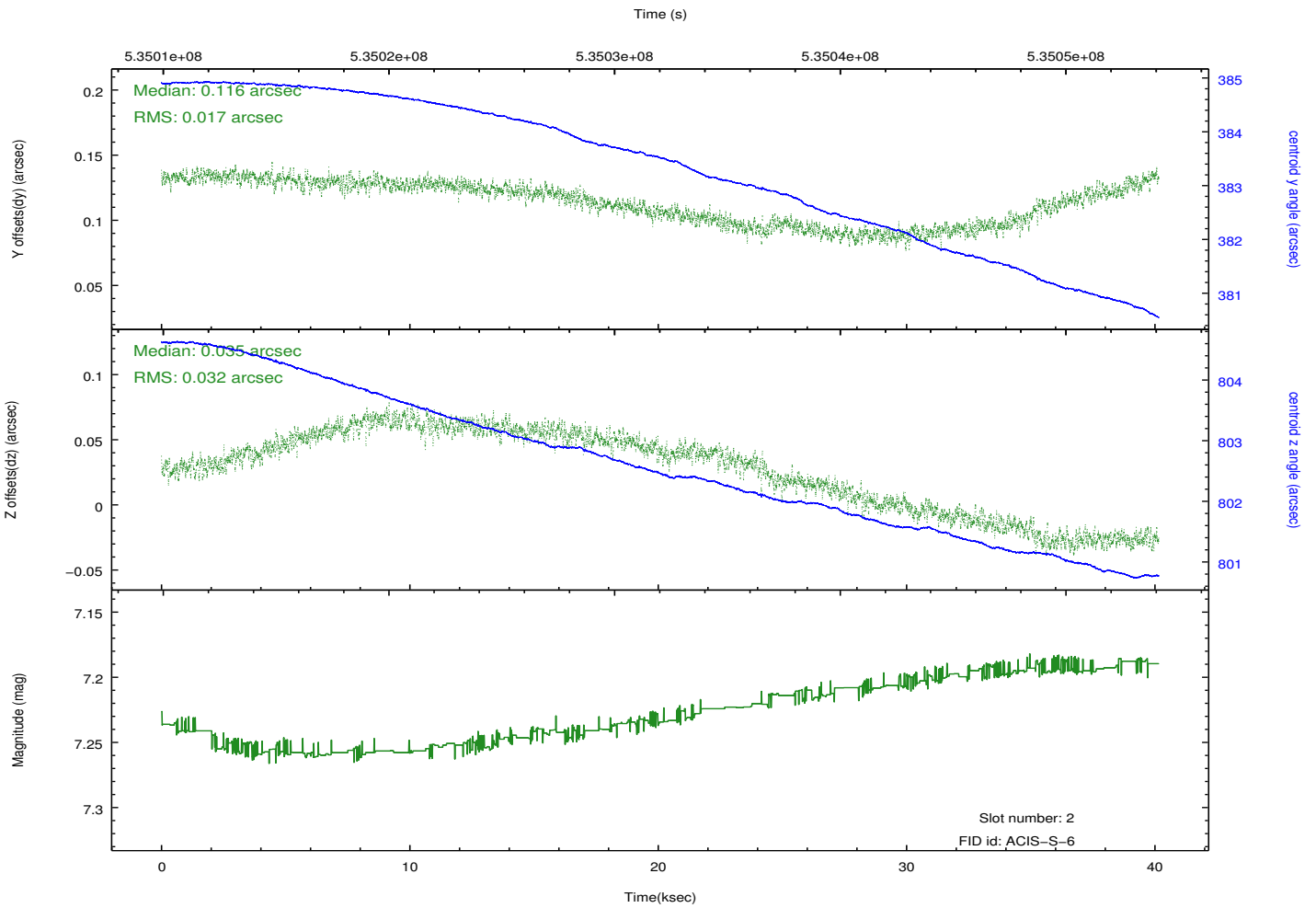
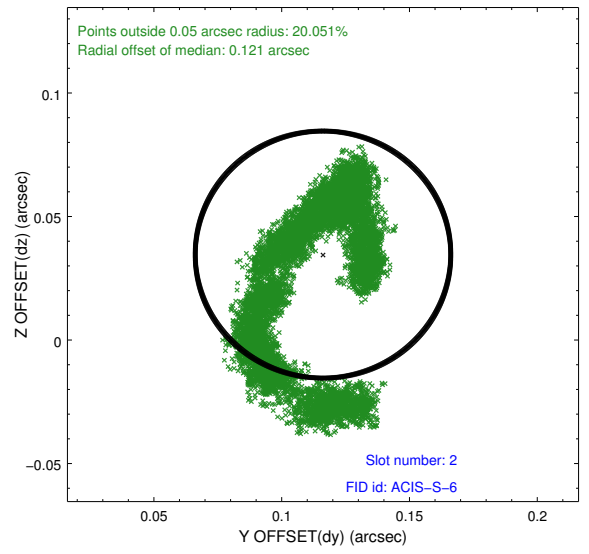
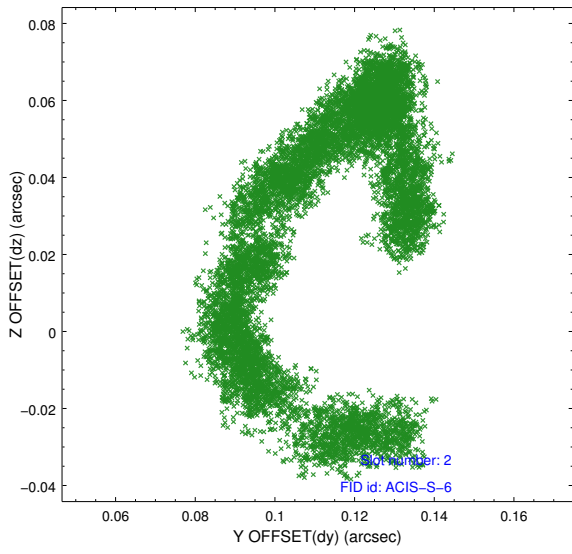
### 2.5.1 Slot 0



## 2.5.2 Slot 1



### 2.5.3 Slot 2



# A Summary

## A.1 Status

V&V Scientist	Jen Lauer
V&V Date (YYYY-MM-DD)	2014.12.17
V&V Edition	1
V&V Disposition and Status	OK
V&V Charge Time	40.114000308514

## A.2 Comments

The guide star in slot 6 was removed from the aspect solution due to poor data quality. The aspect solution is improved by the removal of this guide star from the solution.

=====

Monitor constraint met.