

V&V Reference Report

L2 ASCDS Version : 10.4

Observation 17669 - L2 Version 1
Chandra X-Ray Center

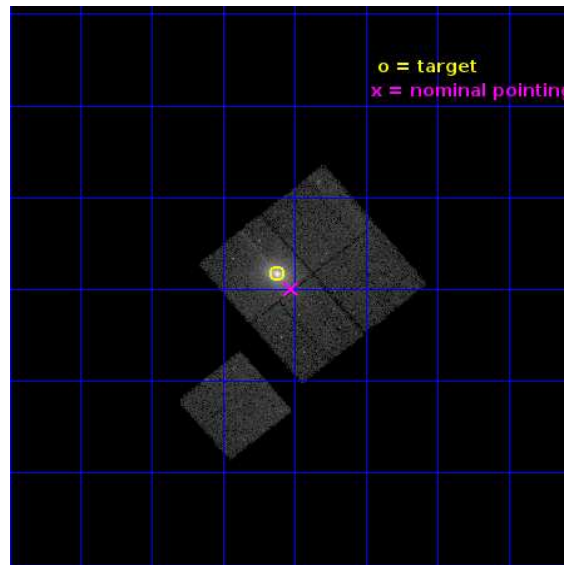
L2 Processing Date : Jun 18 2015

Contents

1	Front	2
2	OBI	3
2.1	OBI	3
2.1.1	Images	3
2.1.2	Bias	3
2.1.3	Parameters	4
2.1.4	Events	4
2.2	Compared Parameters	5
2.3	Aspect	6
2.4	Star Slots	9
2.4.1	Slot 3	9
2.4.2	Slot 4	10
2.4.3	Slot 5	11
2.4.4	Slot 6	12
2.4.5	Slot 7	13
2.5	FID Slots	14
2.5.1	Slot 0	14
2.5.2	Slot 1	15
2.5.3	Slot 2	16
A	Summary	17
A.1	Status	17
A.2	Comments	17

1 Front

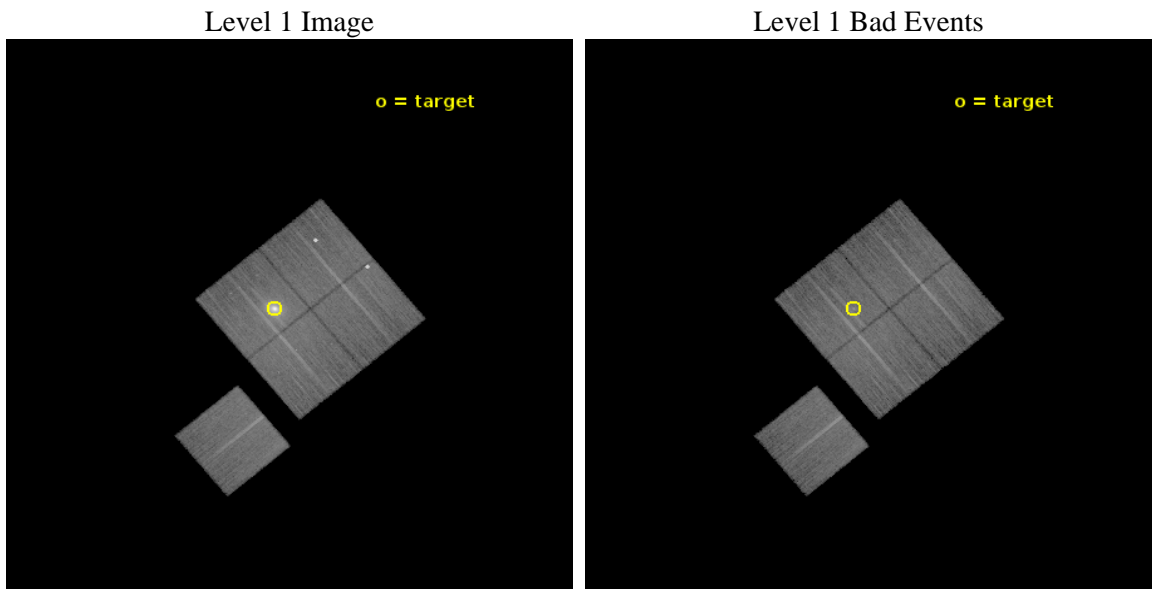
seq_num	801479	Sequence number
obs_id	17669	Observation id
title	The unexpected SZ structure of the extreme cool core in the galaxy cluster RXCJ1504	Proposal title
observer	Dr Simona Giacintucci	Principal investigator
object	RXCJ1504.1-0248	Source name
dtcycle	0	
cycle	P	events from which exps? Prim/Second/Both
ra_targ	226.03125	Observer's specified target RA [deg]
dec_targ	-2.804444	Observer's specified target Dec [deg]
ra_nom	226.00560577798	Nominal RA [deg]
dec_nom	-2.8323167112889	Nominal Dec [deg]
roll_nom	230.20742218132	Nominal Roll [deg]
revision	1	Processing version of data
ontime	29076.965748072	Sum of GTIs [s]
livetime	28697.053784422	Livetime [s]
ontime0	29067.419507027	Sum of GTIs [s]
ontime1	29076.883668065	Sum of GTIs [s]
ontime2	29073.783657908	Sum of GTIs [s]
ontime3	29076.965748072	Sum of GTIs [s]
ontime6	29076.801588058	Sum of GTIs [s]
l2events	150147	Number of level 2 events



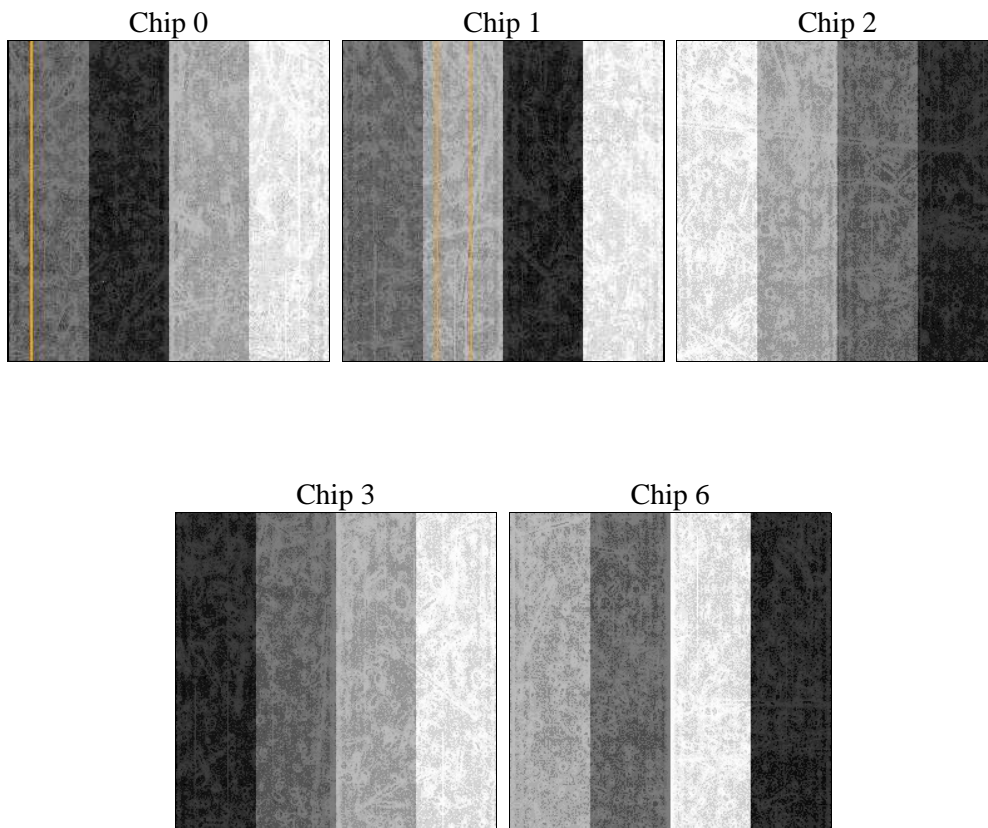
2 OBI

2.1 OBI

2.1.1 Images



2.1.2 Bias



2.1.3 Parameters

obi_num	1	Obi number	sched_exp_time	29000.000000	[s] Scheduled observation exposure time
ascdsver	10.4	Processing system revision	ontime	29076.965748072	Sum of GTIs [s]
caldbver	4.6.7	 	ontime0	29067.419507027	Sum of GTIs [s]
date	2015-06-18T17:11:47	Date and time of file creation	ontime1	29076.883668065	Sum of GTIs [s]
revision	1	Processing version of data	ontime2	29073.783657908	Sum of GTIs [s]
			ontime3	29076.965748072	Sum of GTIs [s]
			ontime6	29076.801588058	Sum of GTIs [s]
			l1events	837478	Number of level 1 events

2.1.4 Events

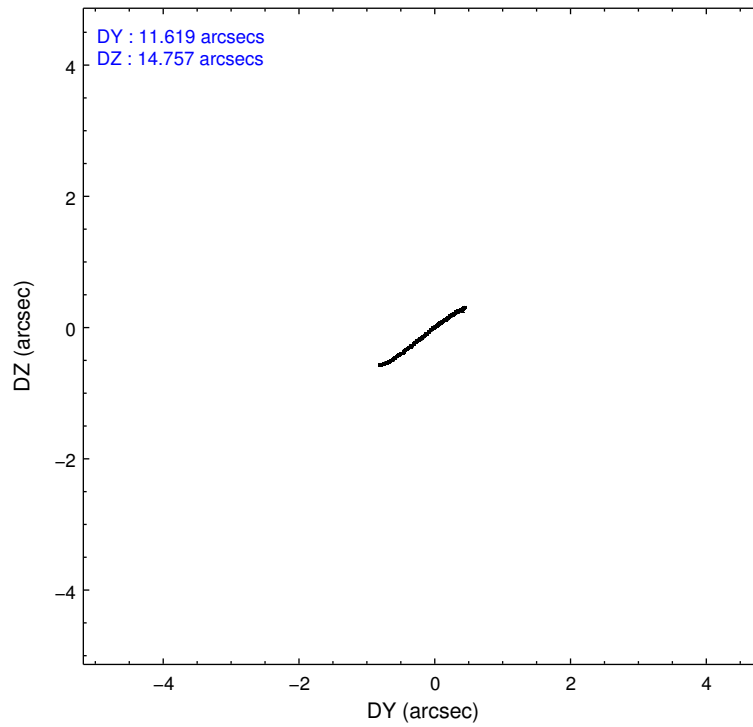
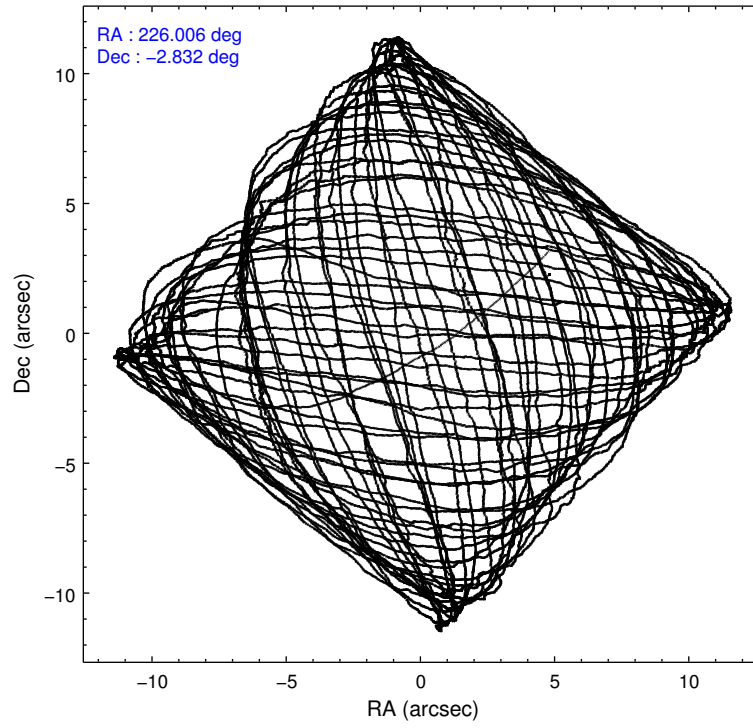
	ccd 0	ccd 1	ccd 2	ccd 3	ccd 6
level 1 events	152804	147907	159574	224653	152540
rejected events	126306	120008	140940	132647	134760
rejected %	82%	81%	88%	59%	88%

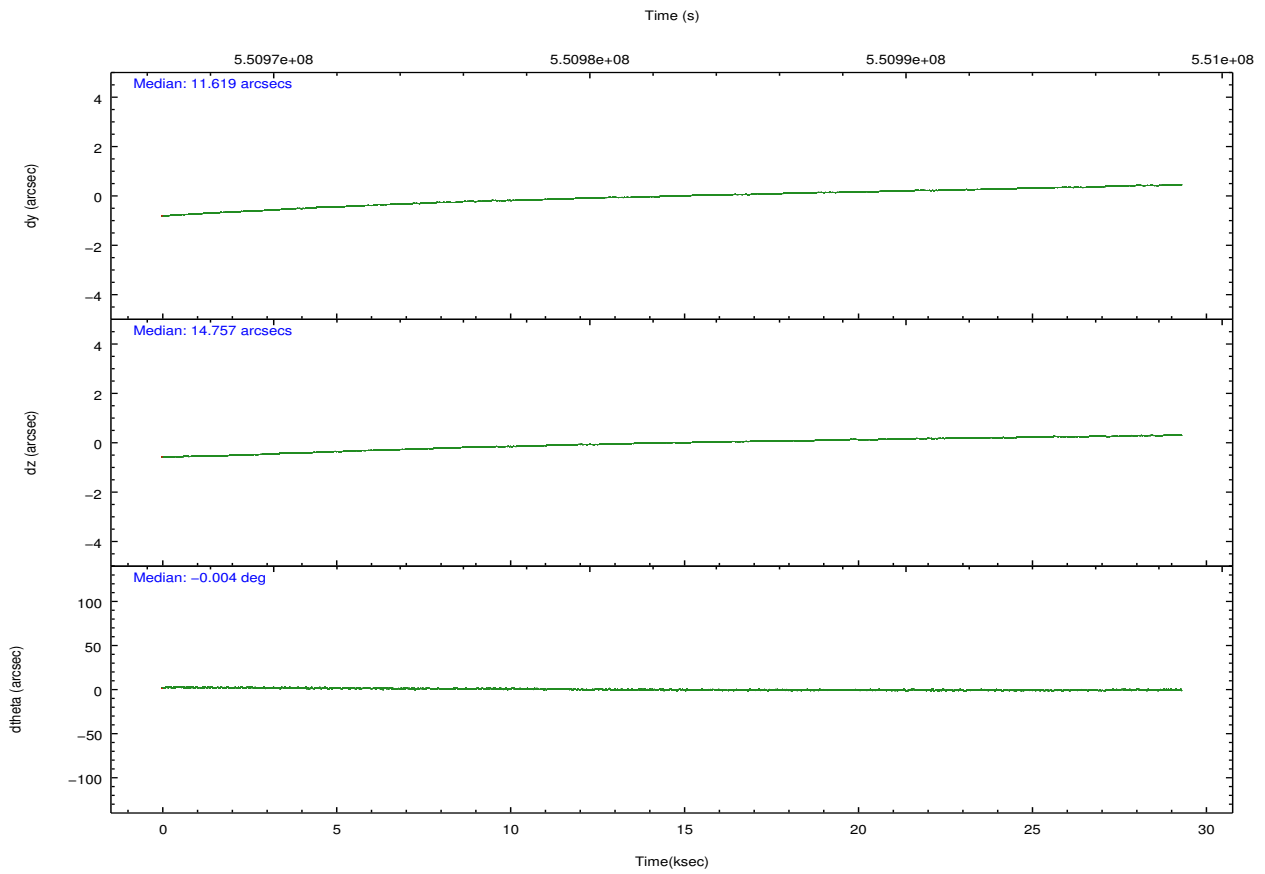
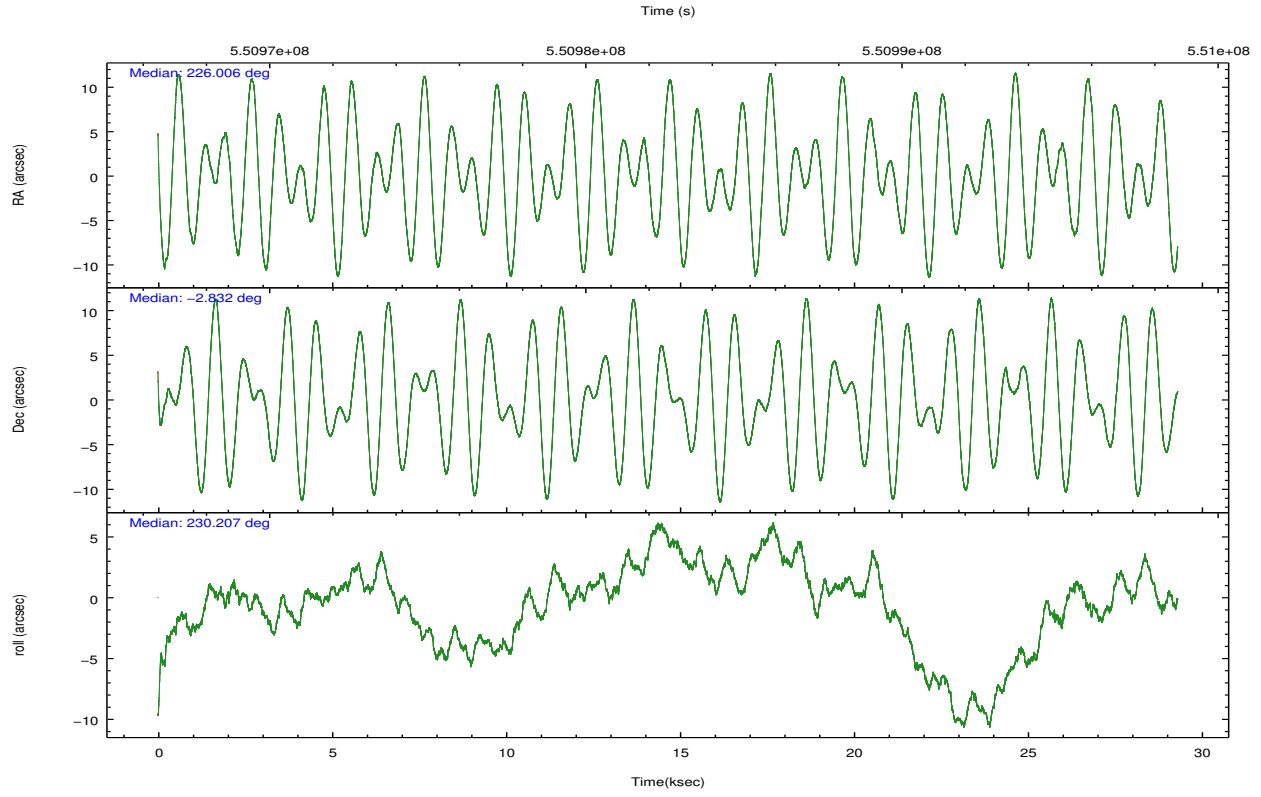
	ccd 0	ccd 1	ccd 2	ccd 3	ccd 6
grade 0 events	15050	15583	7455	66763	5987
	9%	10%	4%	29%	3%
grade 1 events	107	110	83	480	75
	0%	0%	0%	0%	0%
grade 2 events	4342	4398	4262	11311	4038
	2%	2%	2%	5%	2%
grade 3 events	1765	1811	1771	4199	1809
	1%	1%	1%	1%	1%
grade 4 events	1657	1786	1765	4161	1692
	1%	1%	1%	1%	1%
grade 5 events	6637	7113	6149	7900	7395
	4%	4%	3%	3%	4%
grade 6 events	3688	4331	3384	5585	4262
	2%	2%	2%	2%	2%
grade 7 events	119558	112775	134705	124254	127282
	78%	76%	84%	55%	83%

2.2 Compared Parameters

Parameter	Planned	Actual	Parameter	Planned	Actual
Instrument	ACIS	ACIS	Obspar format version number	7	7
Detector	ACIS-01236	ACIS-01236	Obspar file type	PREDICTED	ACTUAL
Grating	NONE	NONE	Obspar update status	NONE	UPDATED
Data mode	VFAINT	VFAINT	CCD I0 on	Y	Y
Observation mode	POINTING	POINTING	CCD I1 on	Y	Y
[deg] Pointing RA	226.010229	226.0056057779788	CCD I2 on	Y	Y
[deg] Pointing Dec	-2.805098	-2.832316711288885	CCD I3 on	Y	Y
[deg] Pointing Roll	229.998971	230.2074221813151	CCD S0 on	N	N
[mm] SIM focus pos	-0.782348	-0.7809083437167272	CCD S1 on	N	N
[mm] SIM defocus	0	0.001439871863259334	CCD S2 on	O1	Y
[mm] SIM translation stage pos	-227.592463	-227.5933067819097	CCD S3 on	N	N
[mm] SIM translation stage offset	-6	-5.999146221020027	CCD S4 on	N	N
[s] Observation start time (MET)	550968225.184000	550967214.65169	CCD S5 on	N	N
Observation start date	2015-06-17T22:42:38	2015-06-17T22:26:54	Number of optional ACIS chips dropped	0	0
[s] Observation end time (MET)	550997225.184000	550998534.0409499	On-chip summing requested	N	N
Observation end date	2015-06-18T06:45:58	2015-06-18T07:08:54	Subarray requested	NONE	NONE
Read mode	TIMED	TIMED	Alternating exposures requested	N	N
			[s] Primary exposure time	0.000000	3.1

2.3 Aspect





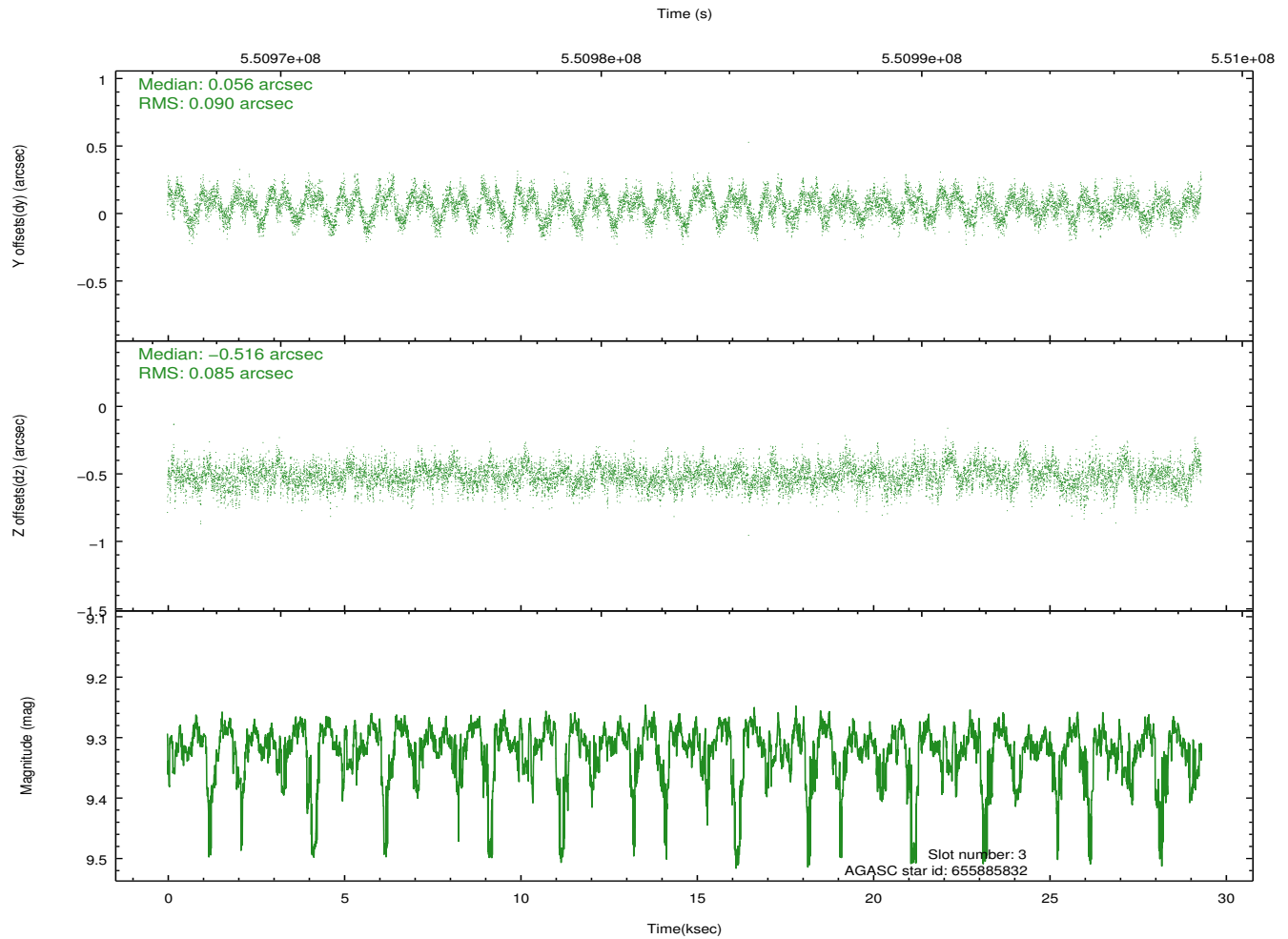
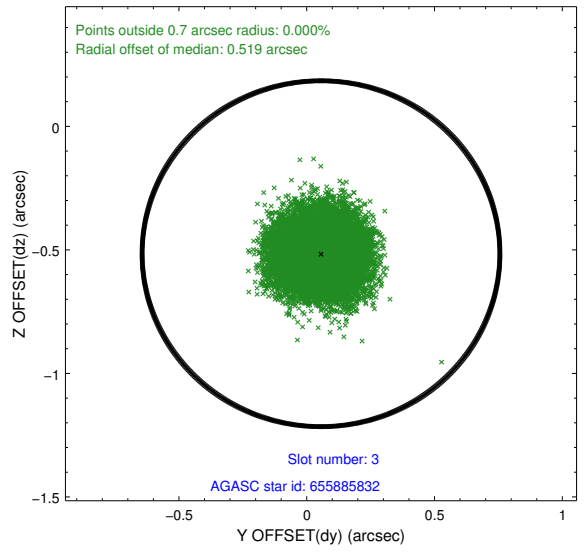
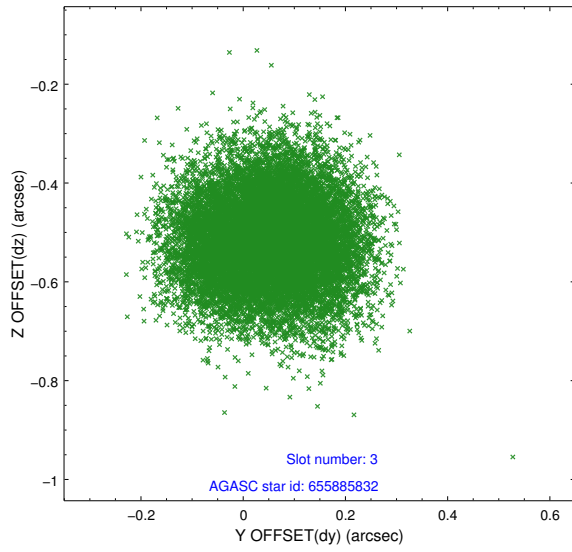
Slot Statistics

slot	status	used	id	mag	n_pts	med_dy	med_dz	dr1	dr2	ra	dec	mean_y	mean_z
0	FID		ACIS-I-1	7.19	7150	0.119	-0.082	0.011	0.019	0.000000	0.000000	928.04	-961.47
1	FID		ACIS-I-5	7.20	7150	-0.296	0.094	0.011	0.019	0.000000	0.000000	-1820.51	936.02
2	FID		ACIS-I-6	7.20	7149	0.084	0.057	0.009	0.015	0.000000	0.000000	393.36	1580.67
3	GUIDE	used	655885832	9.31	14291	0.056	-0.516	0.134	0.208	226.255485	-2.527966	-1330.53	34.28
4	GUIDE	used	655887128	8.55	14291	-0.049	0.088	0.109	0.178	225.259962	-2.869697	1913.32	-1915.98
5	GUIDE	used	655891488	6.98	14299	-0.010	0.063	0.126	0.192	225.686953	-3.031386	1372.71	-366.56
6	GUIDE	used	655887400	8.89	14293	-0.089	0.124	0.102	0.160	225.974634	-2.124539	-1793.91	-1672.56
7	GUIDE	used	655888504	9.25	14289	0.099	0.234	0.113	0.185	226.393678	-2.410162	-1974.95	143.21

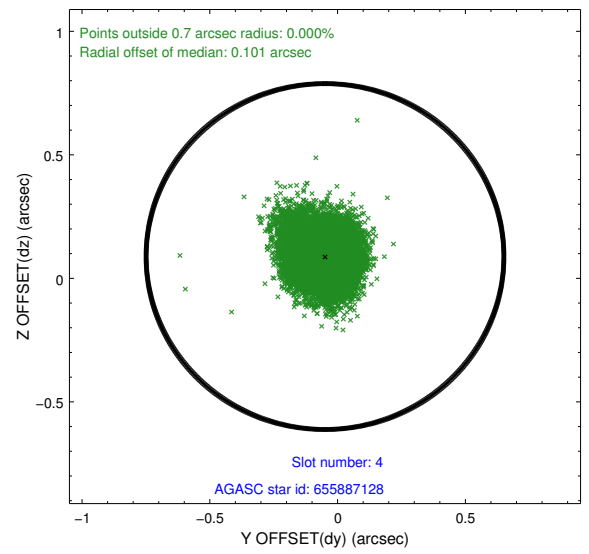
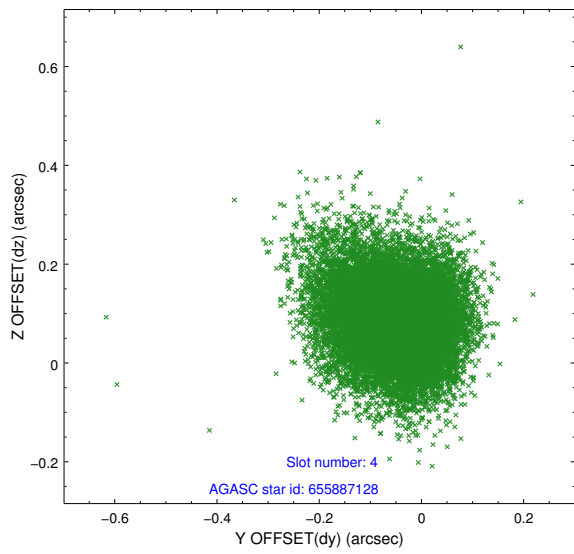
∞

2.4 Star Slots

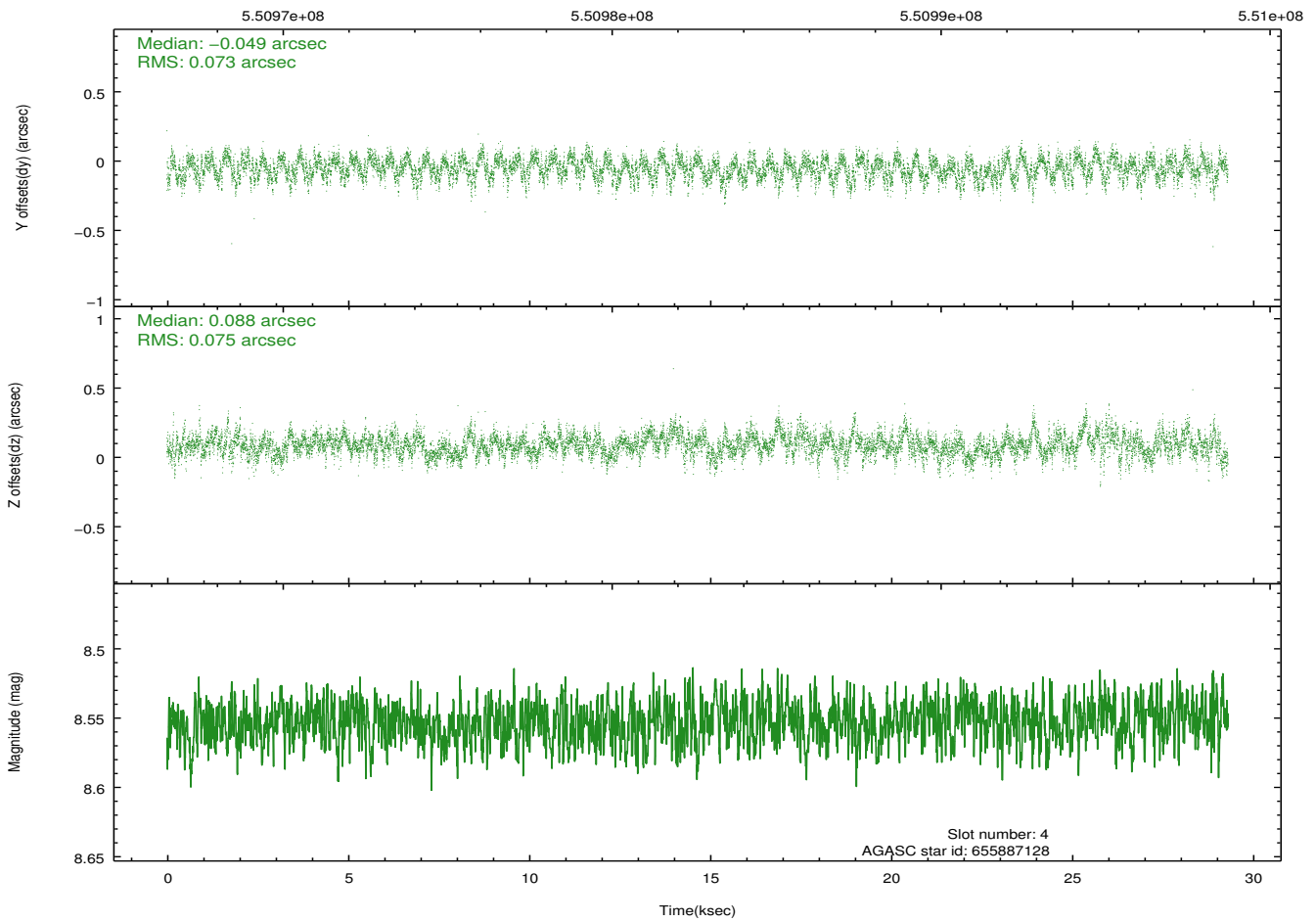
2.4.1 Slot 3



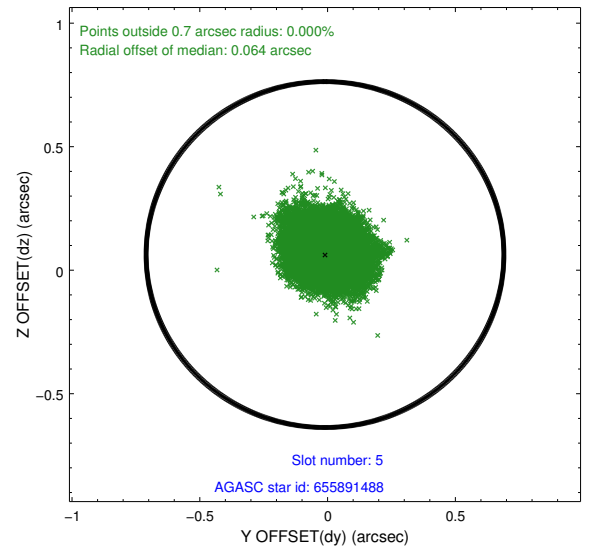
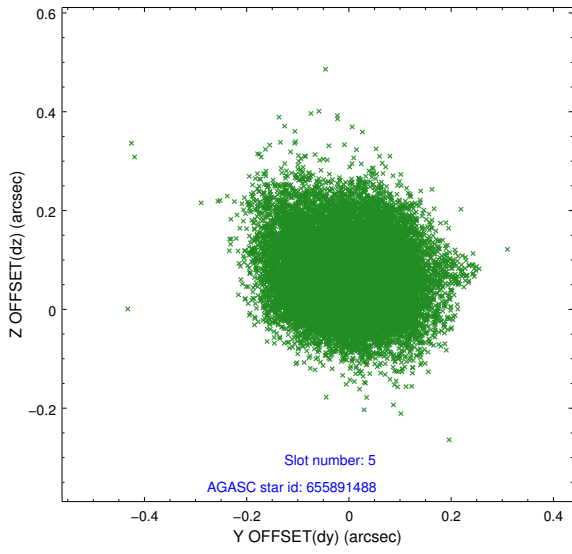
2.4.2 Slot 4



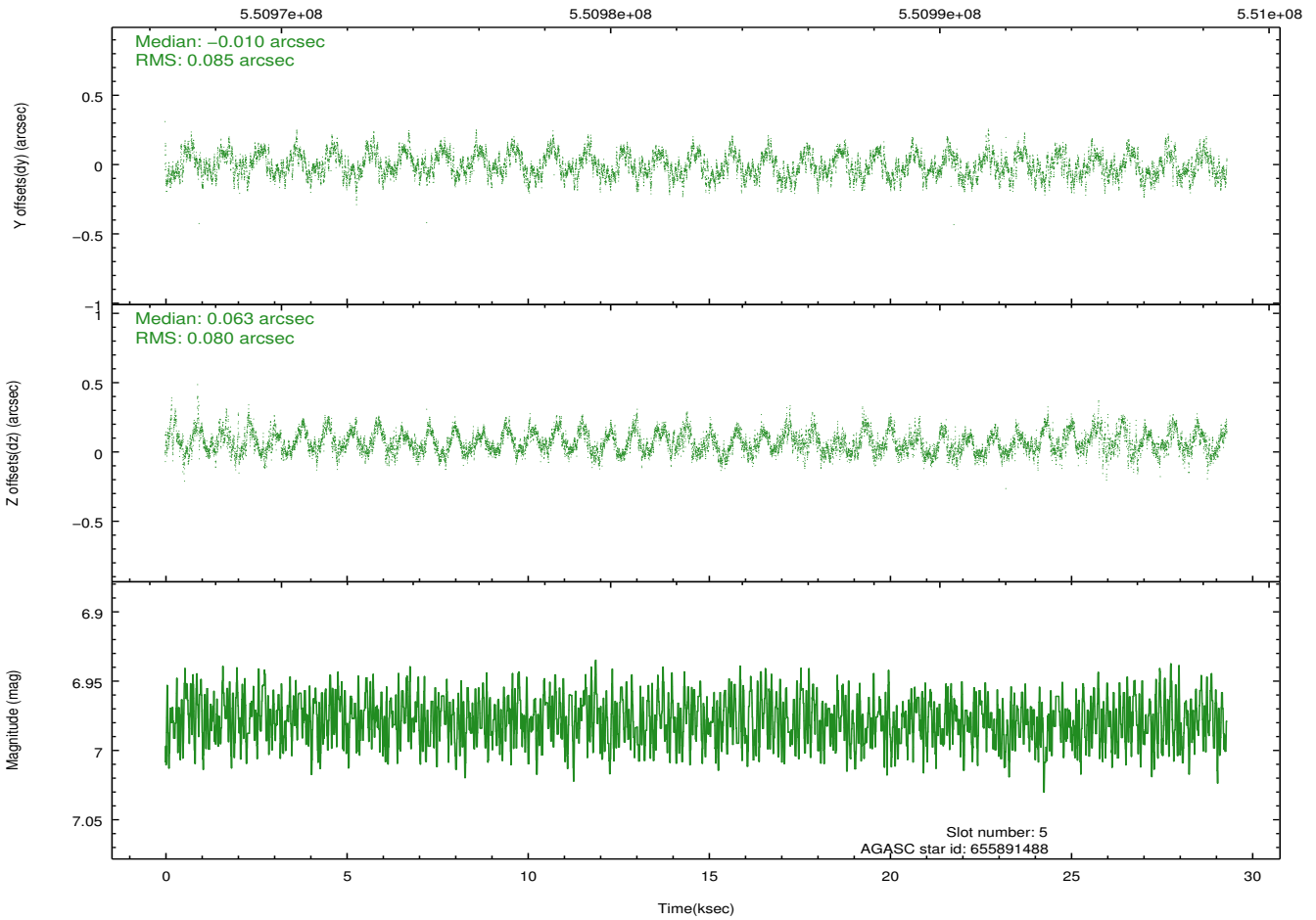
Time (s)



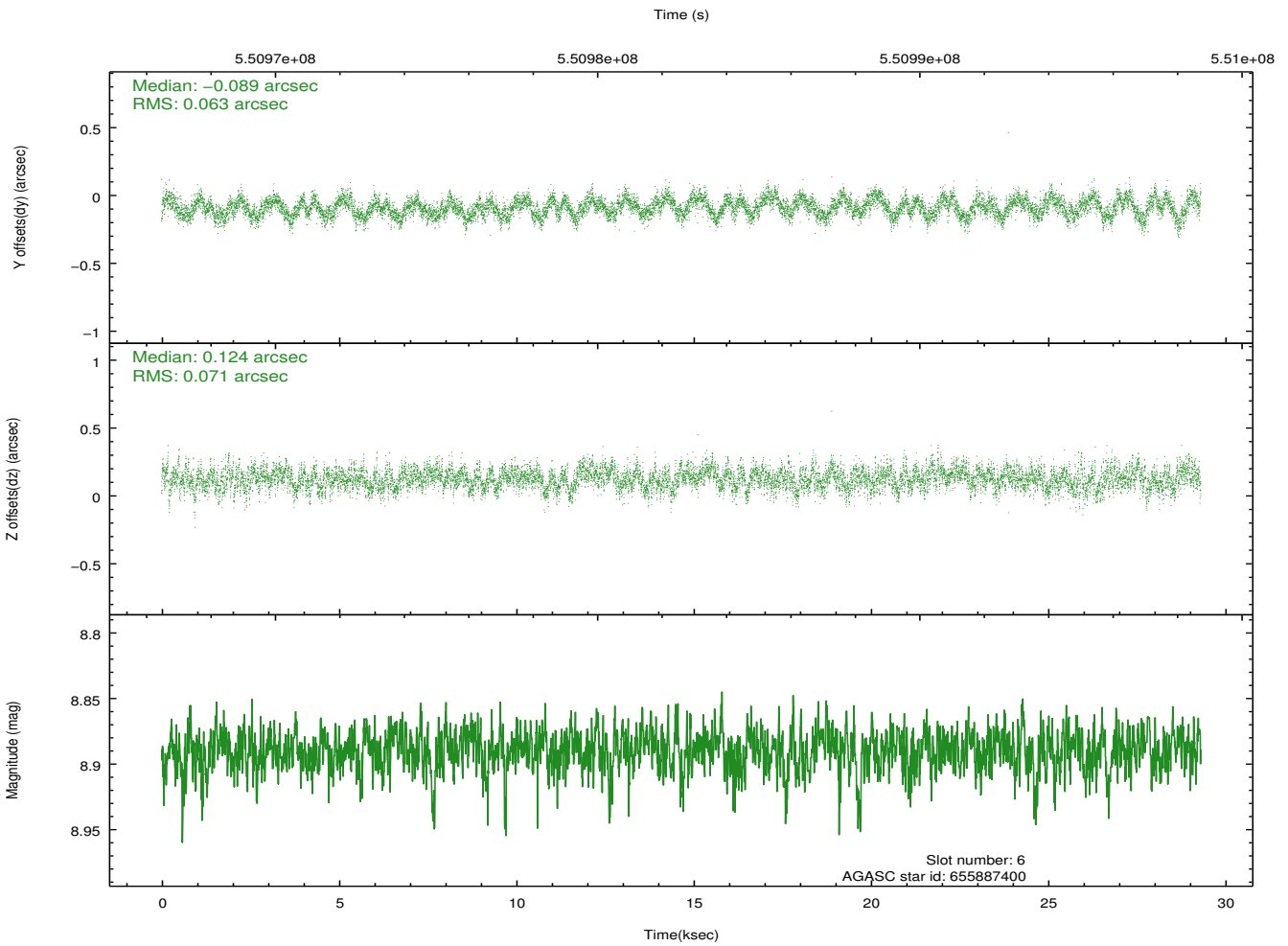
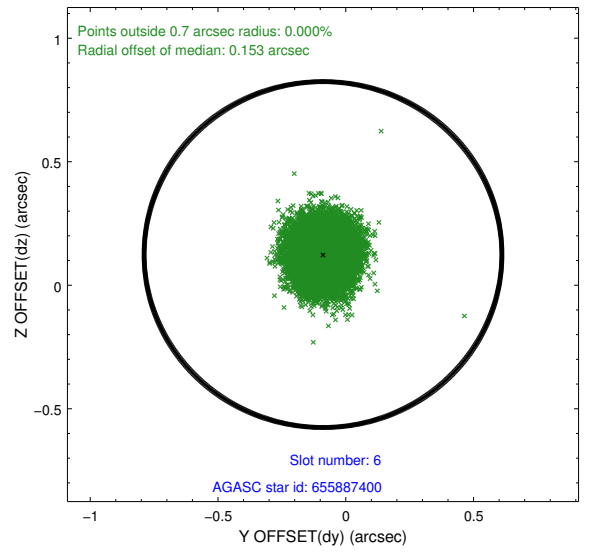
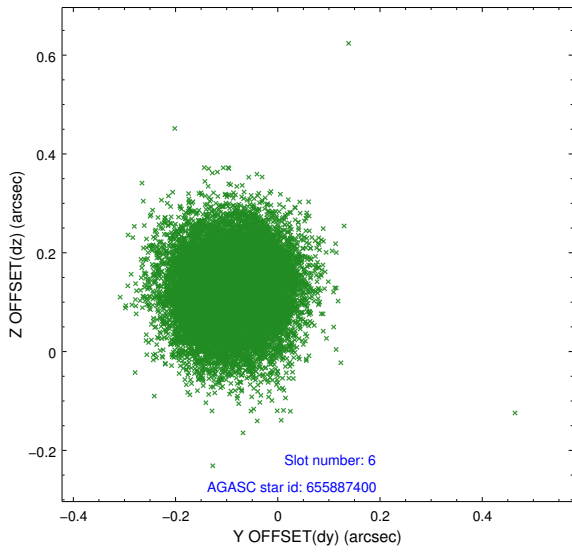
2.4.3 Slot 5



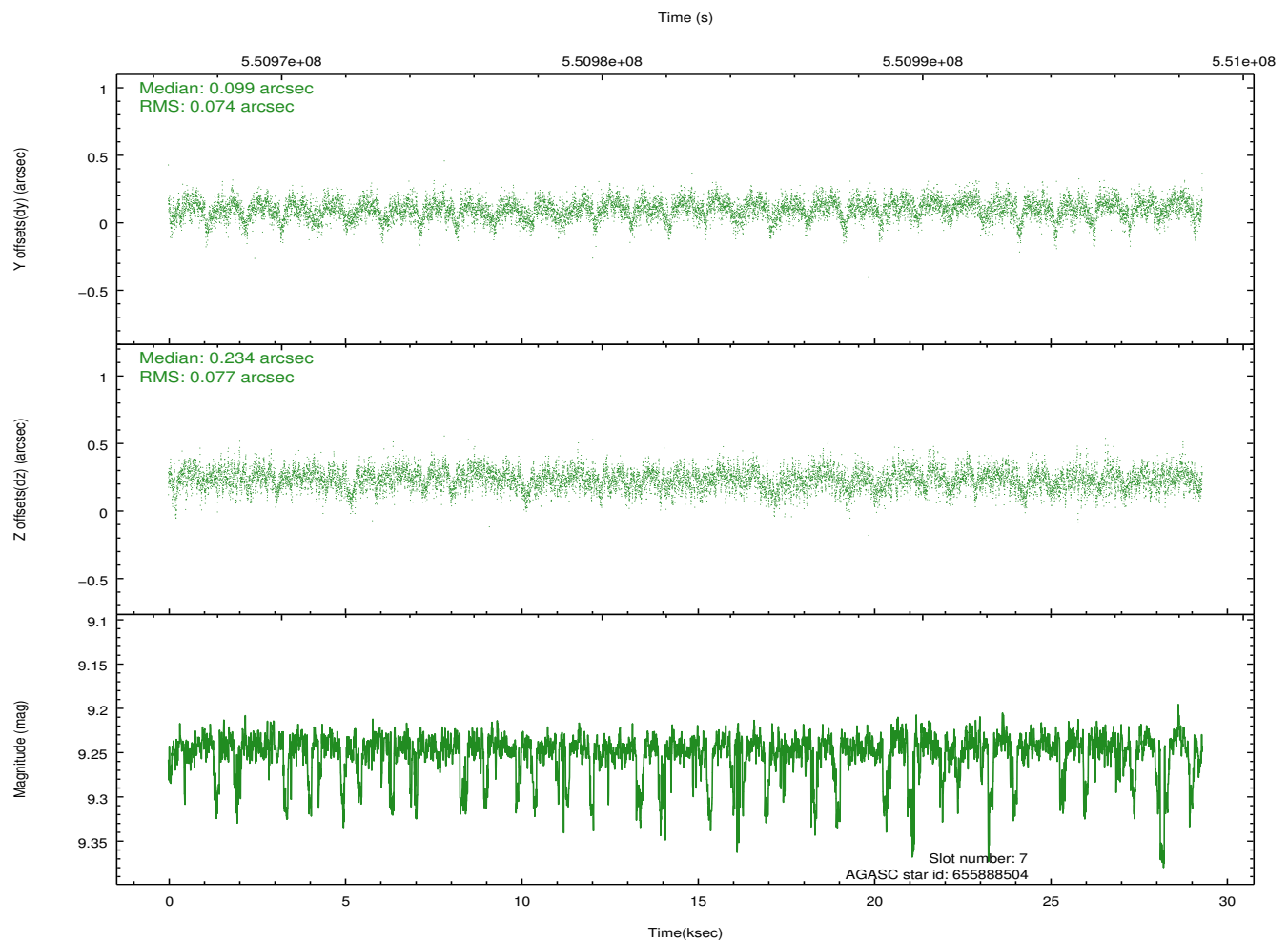
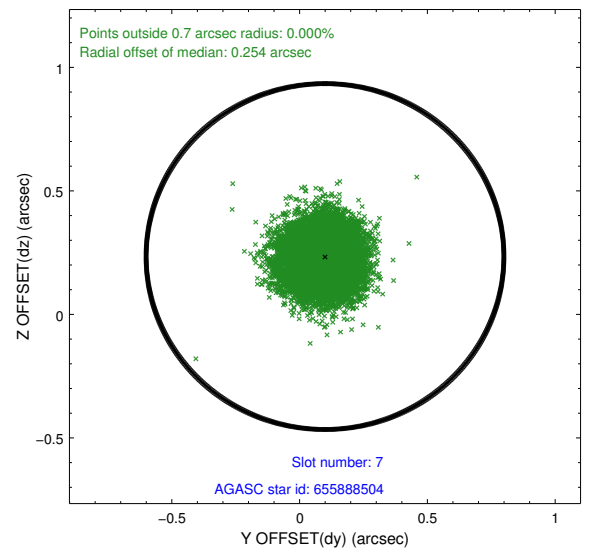
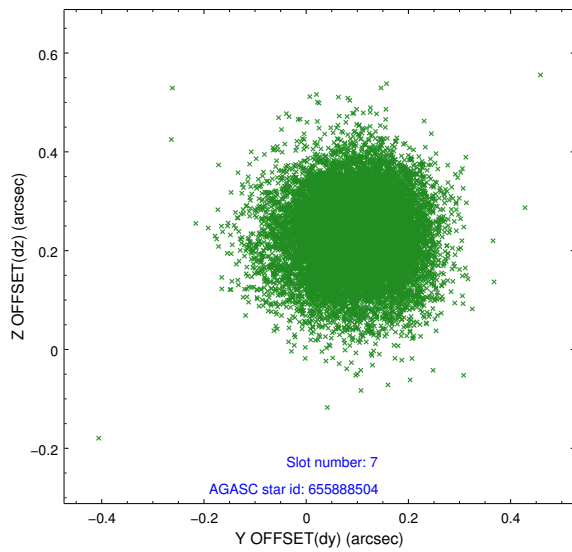
Time (s)



2.4.4 Slot 6

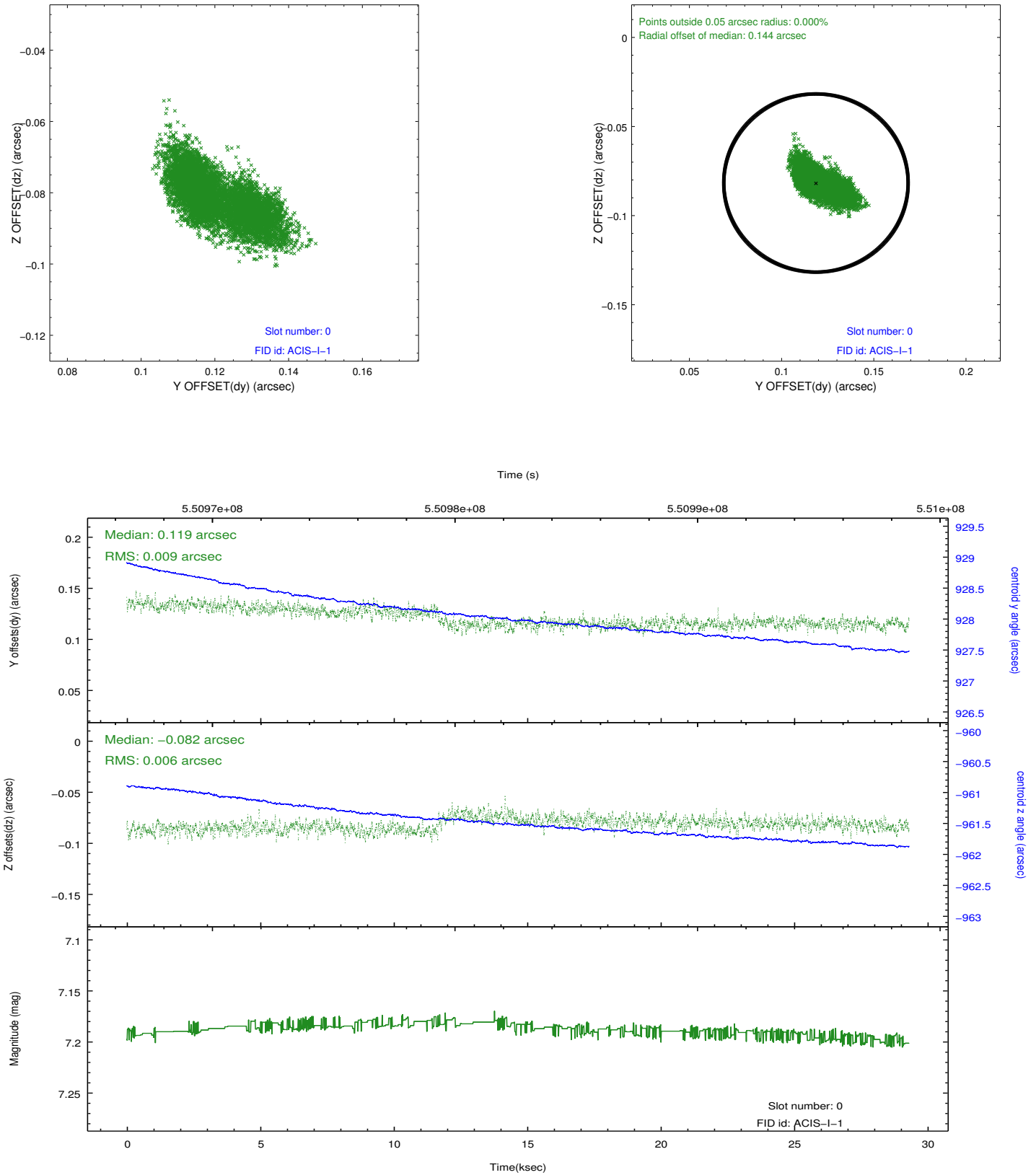


2.4.5 Slot 7

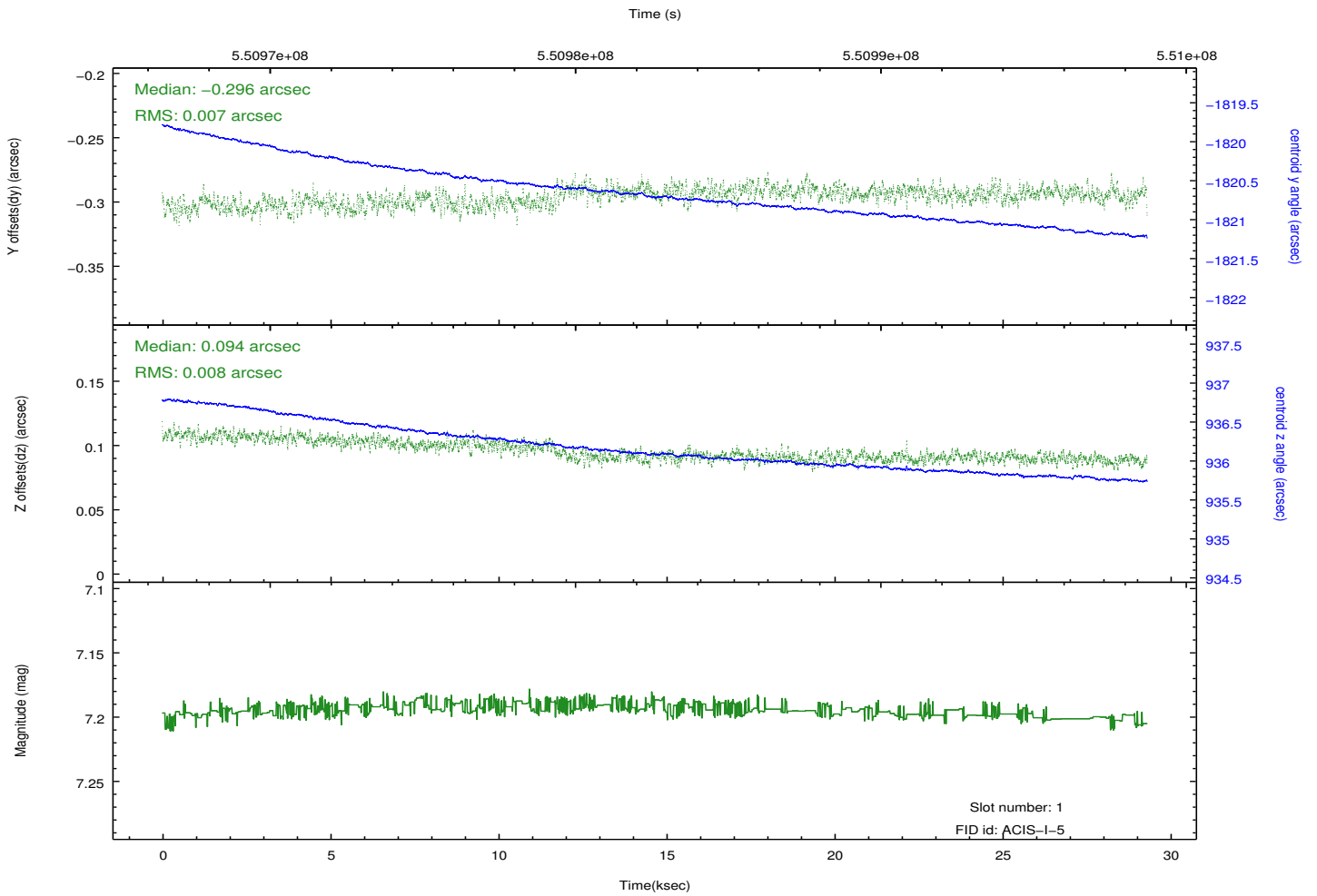
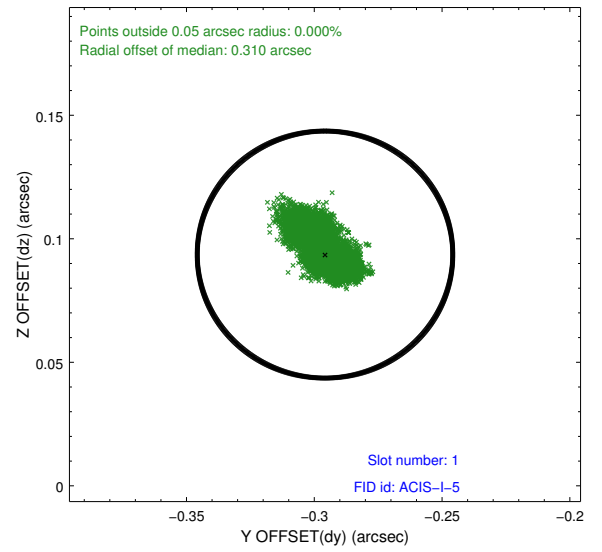
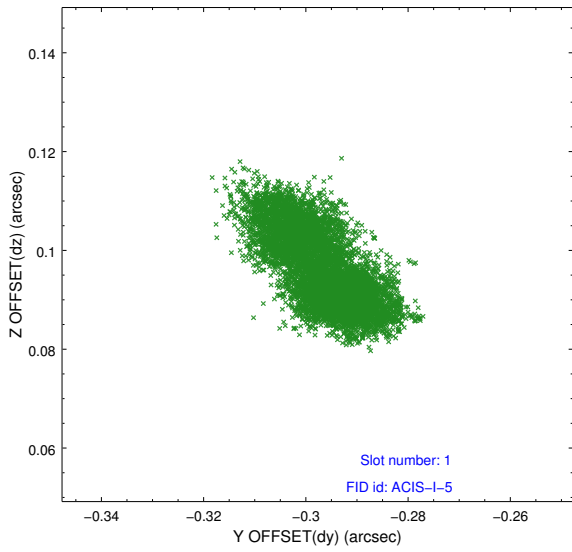


2.5 FID Slots

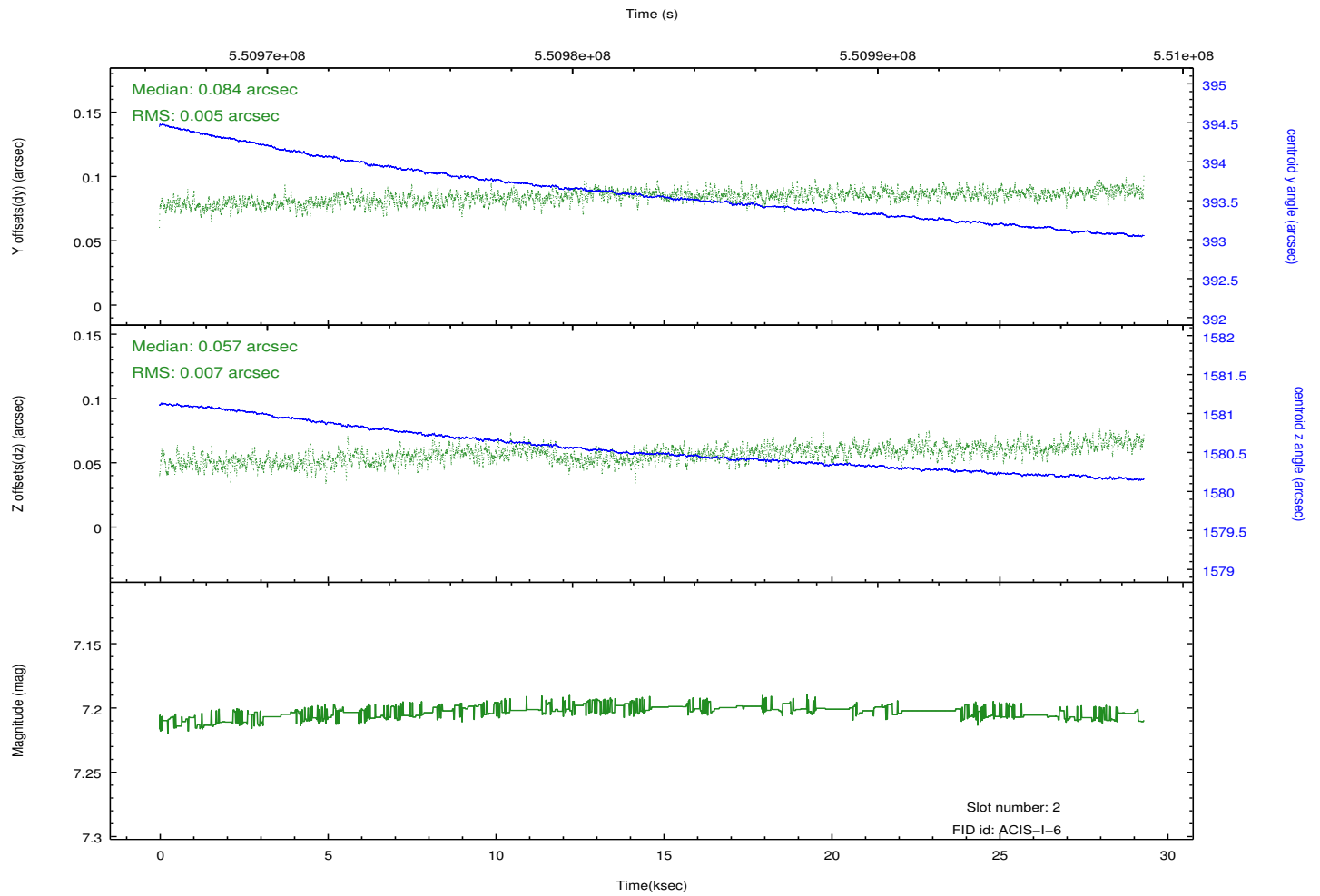
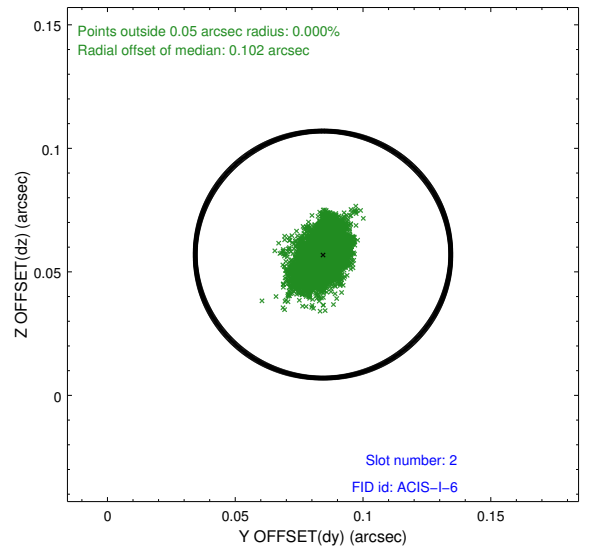
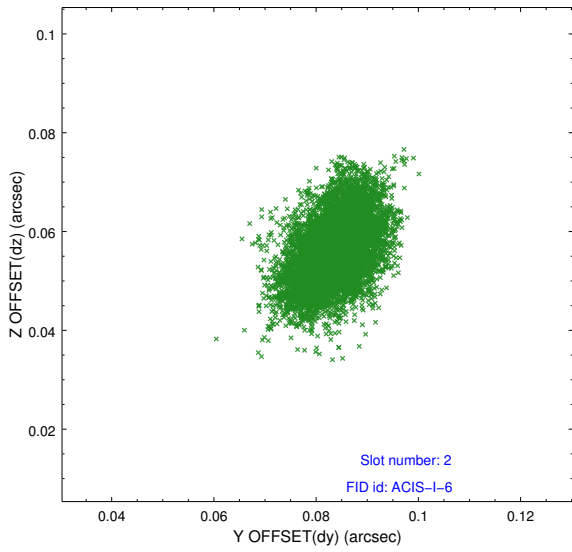
2.5.1 Slot 0



2.5.2 Slot 1



2.5.3 Slot 2



A Summary

A.1 Status

V&V Scientist	Beth Sundheim
V&V Date (YYYY-MM-DD)	2015.06.18
V&V Edition	1
V&V Disposition and Status	OK
V&V Charge Time	29.076965748072

A.2 Comments