

V&V Reference Report

L2 ASCDS Version : 10.4.2.1

Observation 18719 - L2 Version 1
Chandra X-Ray Center

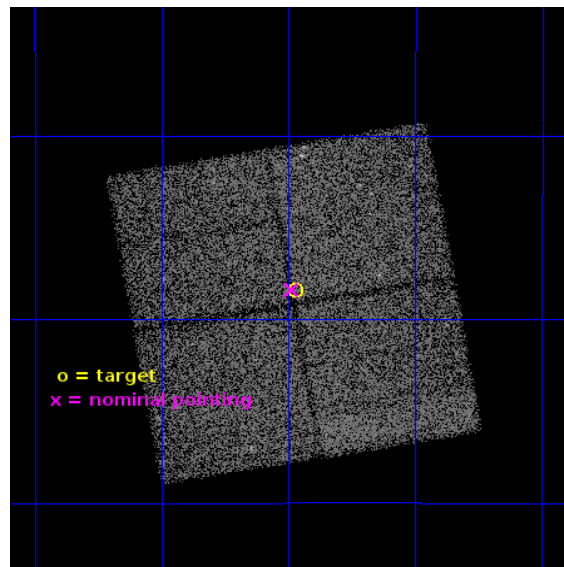
L2 Processing Date : Dec 11 2015

Contents

1	Front	2
2	OBI	3
2.1	OBI	3
2.1.1	Images	3
2.1.2	Bias	3
2.1.3	Parameters	4
2.1.4	Events	4
2.2	Compared Parameters	5
2.3	Aspect	6
2.4	Star Slots	9
2.4.1	Slot 3	9
2.4.2	Slot 4	10
2.4.3	Slot 5	11
2.4.4	Slot 6	12
2.4.5	Slot 7	13
2.5	FID Slots	14
2.5.1	Slot 0	14
2.5.2	Slot 1	15
2.5.3	Slot 2	16
A	Summary	17
A.1	Status	17
A.2	Comments	17

1 Front

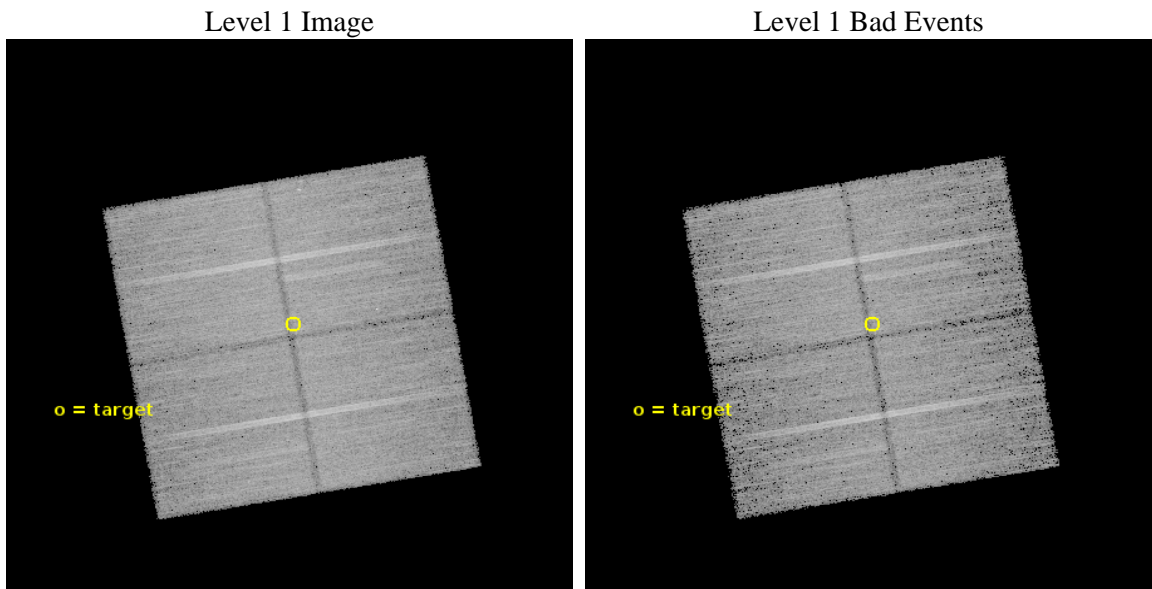
seq_num	901115	Sequence number
obs_id	18719	Observation id
title	The Chandra Deep Field-South: A Peerless Ultradeep Survey for Exploring the Distant X-ray Universe	Proposal title
observer	Prof. William Brandt	Principal investigator
object	Chandra Deep Field-South	Source name
dtcycle	0	
cycle	P	events from which exps? Prim/Second/Both
ra_targ	53.117083	Observer's specified target RA [deg]
dec_targ	-27.807333	Observer's specified target Dec [deg]
ra_nom	53.12207914996	Nominal RA [deg]
dec_nom	-27.806495793646	Nominal Dec [deg]
roll_nom	350.21100498466	Nominal Roll [deg]
revision	1	Processing version of data
ontime	34991.306268692	Sum of GTIs [s]
livetime	34534.119092067	Livetime [s]
ontime0	34994.324229002	Sum of GTIs [s]
ontime1	34988.083068132	Sum of GTIs [s]
ontime2	34994.406309009	Sum of GTIs [s]
ontime3	34991.306268692	Sum of GTIs [s]
l2events	71231	Number of level 2 events



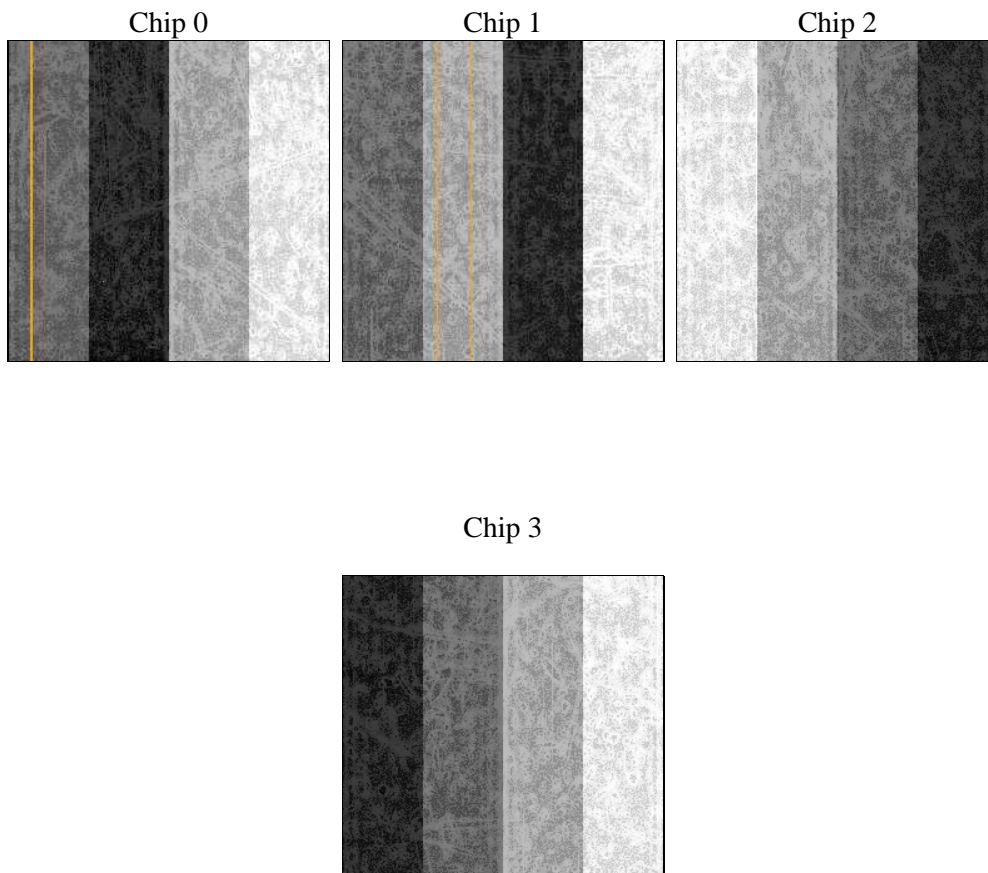
2 OBI

2.1 OBI

2.1.1 Images



2.1.2 Bias



2.1.3 Parameters

obi_num	1	Obi number	sched_exp_time	34908.867000	[s] Scheduled observation exposure time
ascdsver	10.4.2.1	Processing system revision	ontime	34991.306268692	Sum of GTIs [s]
caldsver	4.6.10a	 	ontime0	34994.324229002	Sum of GTIs [s]
date	2015-12-11T14:48:40	Date and time of file creation	ontime1	34988.083068132	Sum of GTIs [s]
revision	1	Processing version of data	ontime2	34994.406309009	Sum of GTIs [s]
			ontime3	34991.306268692	Sum of GTIs [s]
			l1events	735027	Number of level 1 events

2.1.4 Events

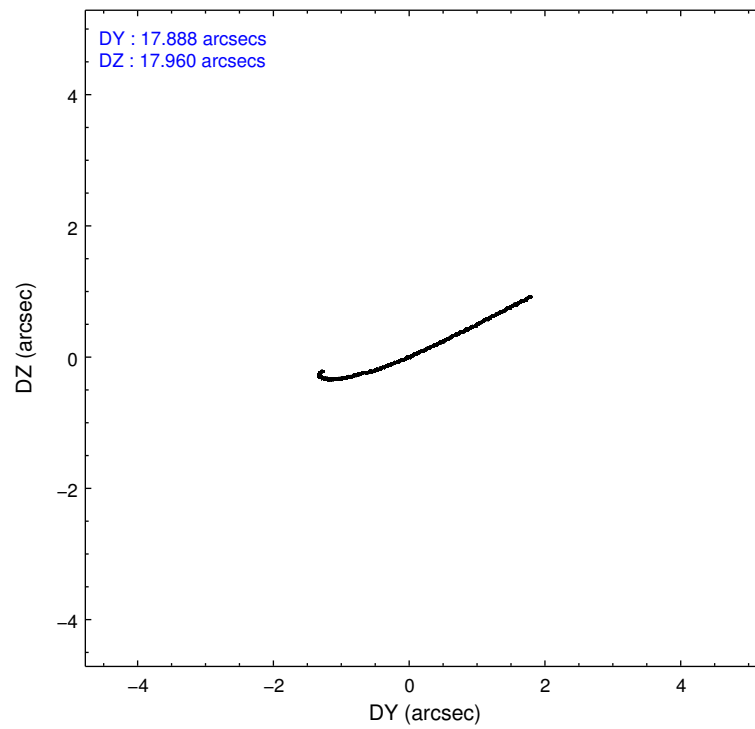
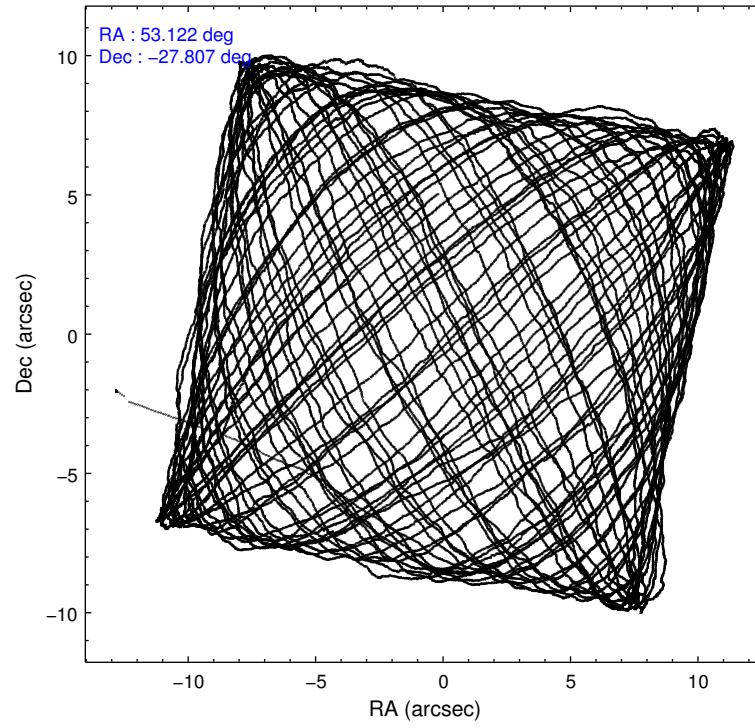
	ccd 0	ccd 1	ccd 2	ccd 3
level 1 events	171291	177695	195688	190353
rejected events	150280	154528	175598	169635
rejected %	87%	86%	89%	89%

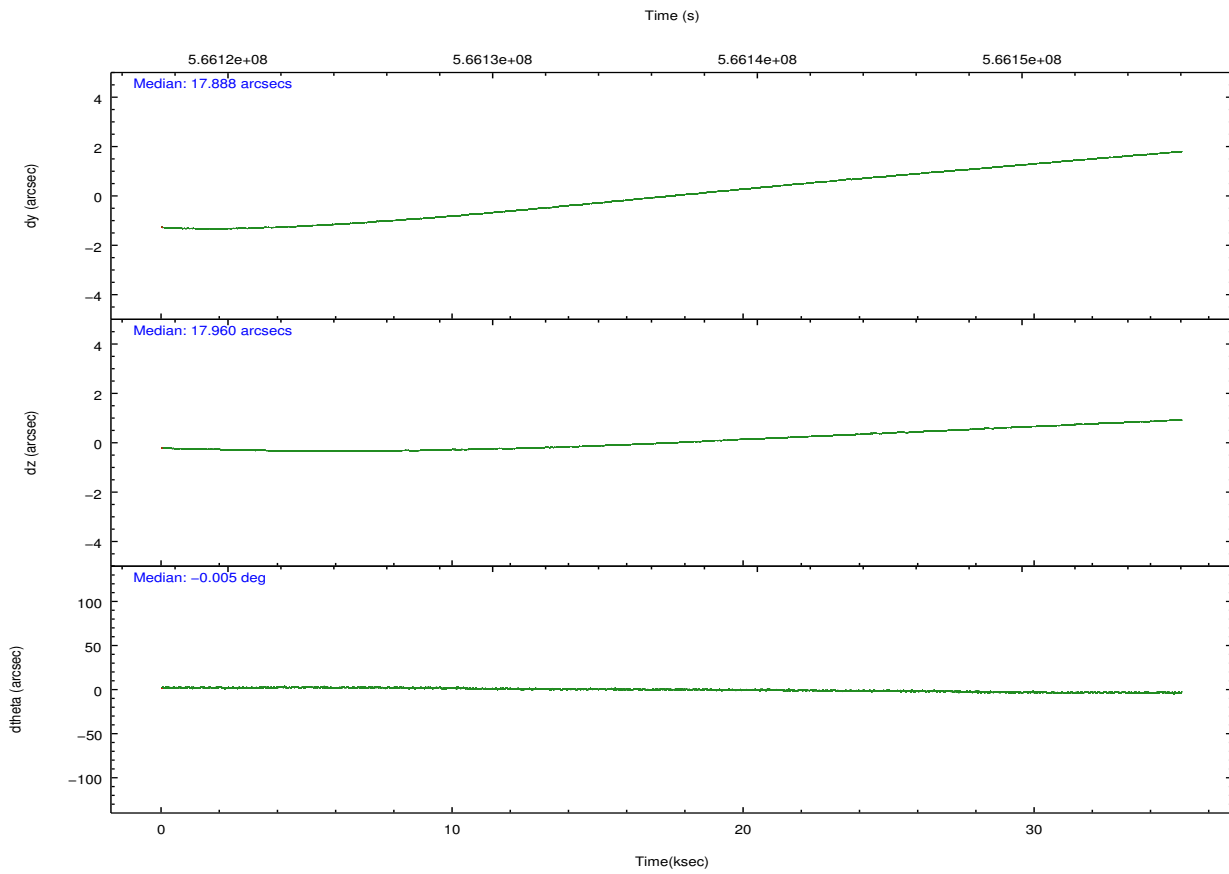
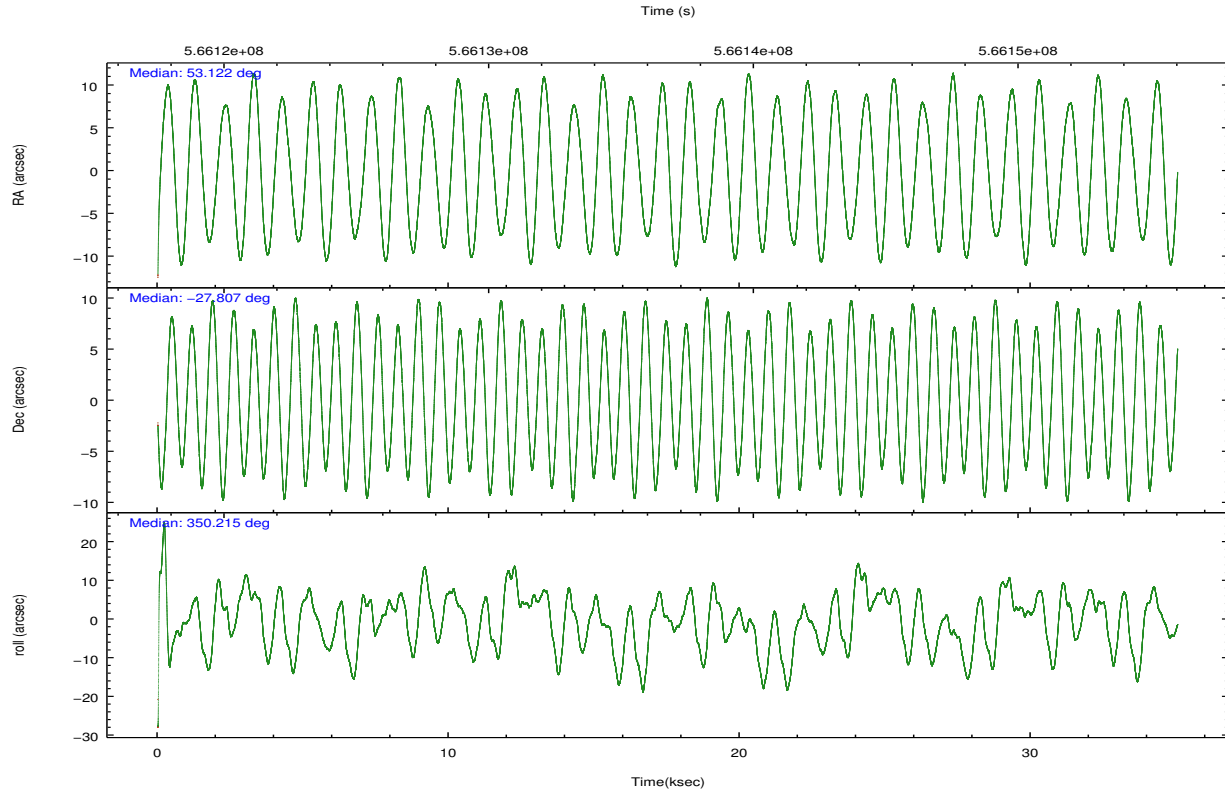
	ccd 0	ccd 1	ccd 2	ccd 3
grade 0 events	6794	7441	6941	7359
	3%	4%	3%	3%
grade 1 events	98	90	99	99
	0%	0%	0%	0%
grade 2 events	5217	6000	4925	4390
	3%	3%	2%	2%
grade 3 events	2225	2193	2057	2309
	1%	1%	1%	1%
grade 4 events	2169	2186	2047	2227
	1%	1%	1%	1%
grade 5 events	8222	8717	7599	9719
	4%	4%	3%	5%
grade 6 events	4609	5348	4121	4436
	2%	3%	2%	2%
grade 7 events	141957	145720	167899	159814
	82%	82%	85%	83%

2.2 Compared Parameters

Parameter	Planned	Actual	Parameter	Planned	Actual
Instrument	ACIS	ACIS	Obspar format version number	7	7
Detector	ACIS-0123	ACIS-0123	Obspar file type	PREDICTED	ACTUAL
Grating	NONE	NONE	Obspar update status	NONE	UPDATED
Data mode	VFAINT	VFAINT	Number of optional ACIS chips dropped	0	0
Observation mode	POINTING	POINTING	On-chip summing requested	N	N
[deg] Pointing RA	53.092842	53.12207914995956	Subarray requested	NONE	NONE
[deg] Pointing Dec	-27.816117	-27.80649579364611	Alternating exposures requested	N	N
[deg] Pointing Roll	349.988692	350.211004984659	[s] Primary exposure time	0.000000	3.1
[mm] SIM focus pos	-0.782348	-0.7809083437167272			
[mm] SIM defocus	0	0.001439871863259334			
[mm] SIM translation stage pos	-233.592463	-233.5874344608287			
[mm] SIM translation stage offset	0	-0.005018542100998502			
[s] Observation start time (MET)	566119395.184000	566117965.77096			
Observation start date	2015-12-10T07:22:07	2015-12-10T06:59:25			
[s] Observation end time (MET)	566154304.184000	566154540.84804			
Observation end date	2015-12-10T17:03:56	2015-12-10T17:09:00			
Read mode	TIMED	TIMED			

2.3 Aspect





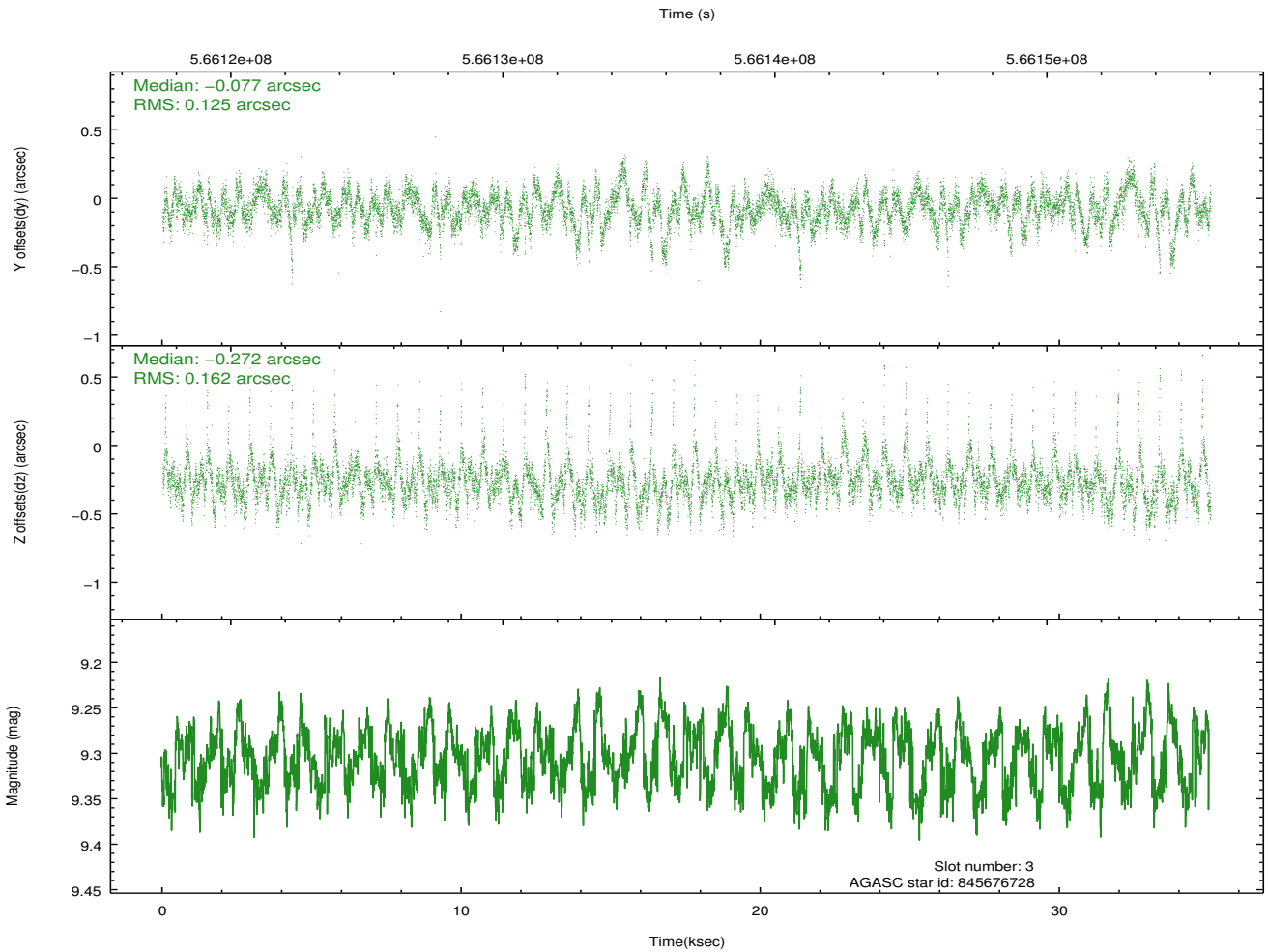
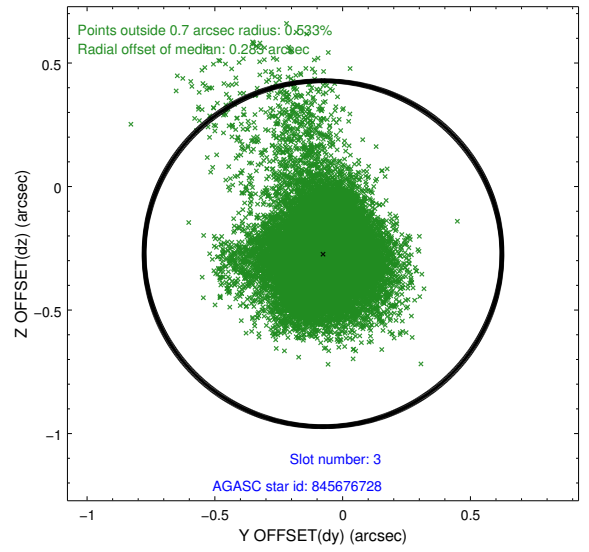
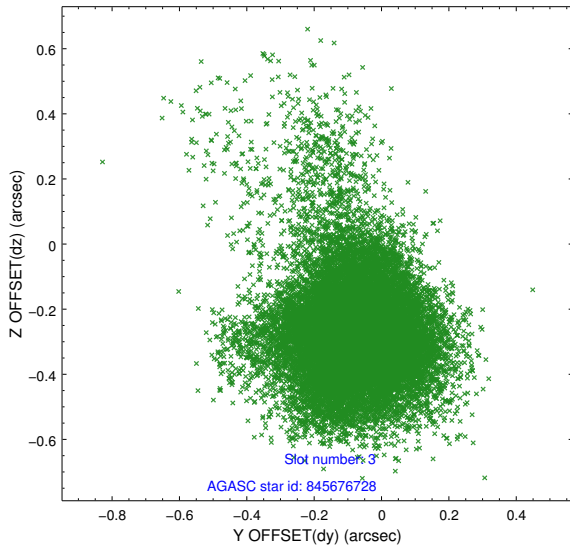
Slot Statistics

slot	status	used	id	mag	n_pts	med_dy	med_dz	dr1	dr2	ra	dec	mean_y	mean_z
0	FID		ACIS-I-1	7.26	8547	0.071	-0.005	0.021	0.032	0.000000	0.000000	921.56	-841.71
1	FID		ACIS-I-5	7.25	8545	-0.354	0.040	0.011	0.017	0.000000	0.000000	-1827.04	1055.67
2	FID		ACIS-I-6	7.27	8546	0.190	0.035	0.018	0.025	0.000000	0.000000	387.06	1700.32
3	GUIDE	used	845676728	9.30	17060	-0.077	-0.272	0.195	0.360	52.877179	-27.664318	-771.52	418.24
4	GUIDE	used	845676936	9.48	17075	0.044	0.029	0.162	0.258	52.843773	-27.880153	-739.16	-364.76
5	GUIDE	used	845683408	9.18	17068	0.267	0.289	0.141	0.227	52.484531	-28.338862	-1569.38	-2192.55
6	GUIDE	used	845807880	8.80	17083	-0.211	0.199	0.103	0.168	53.382027	-27.886093	950.43	-88.75
7	GUIDE	used	845808496	10.14	16869	-0.025	-0.252	0.255	0.423	53.777917	-27.725281	2094.71	695.51

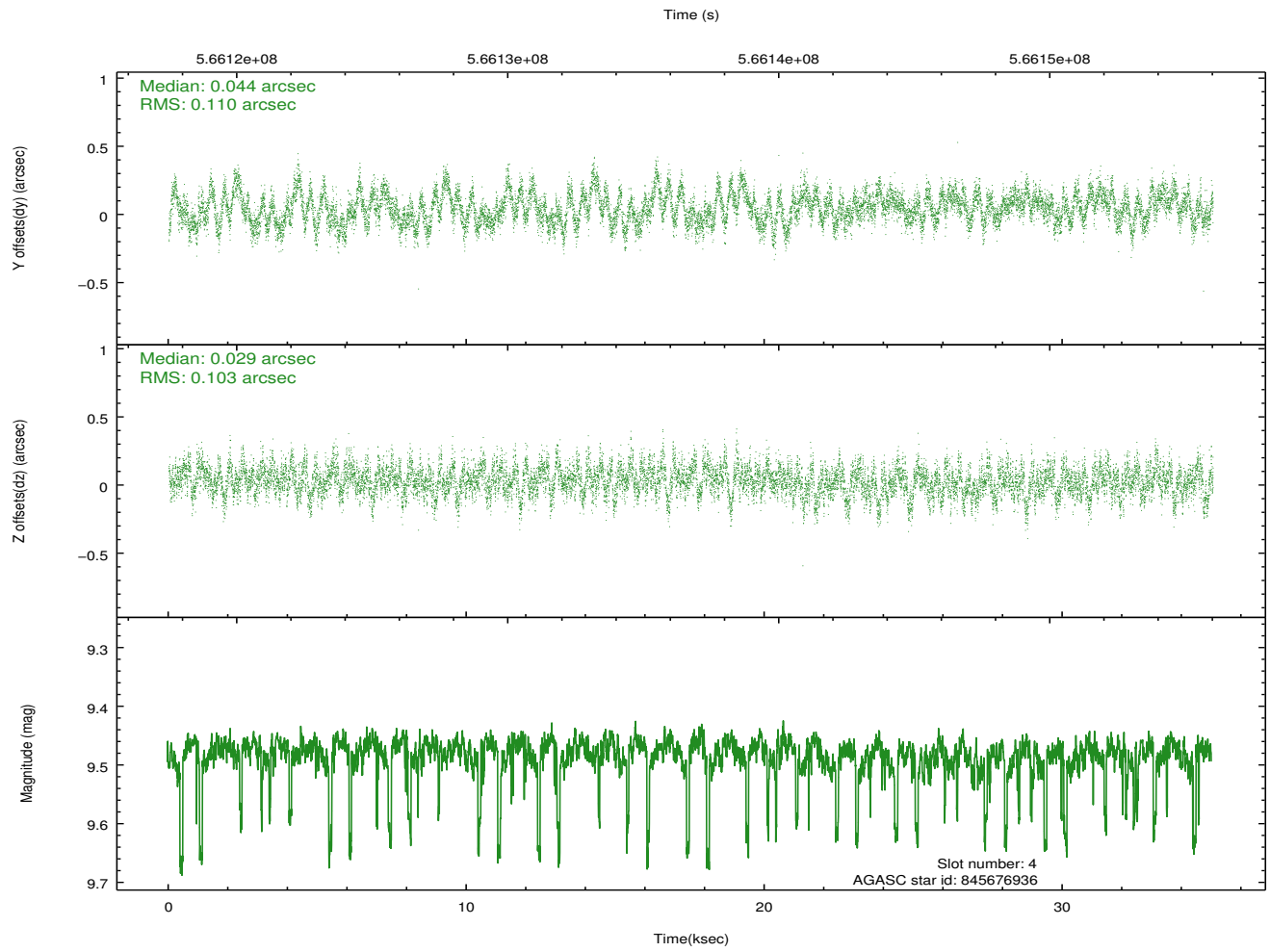
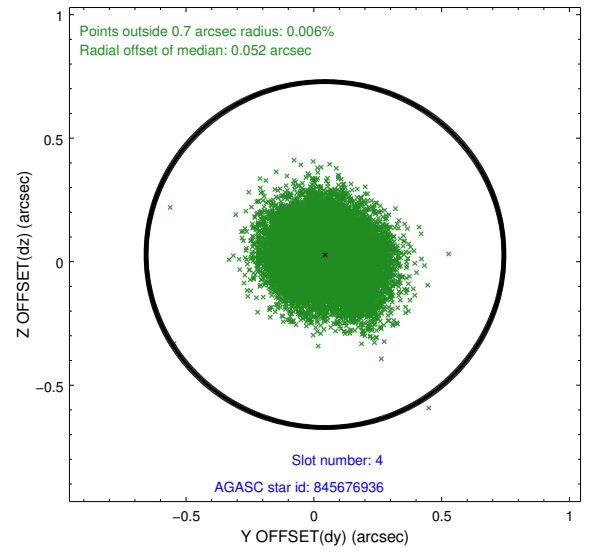
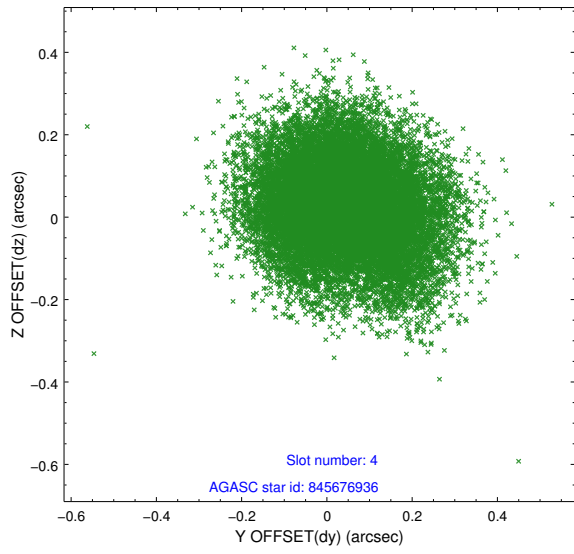
∞

2.4 Star Slots

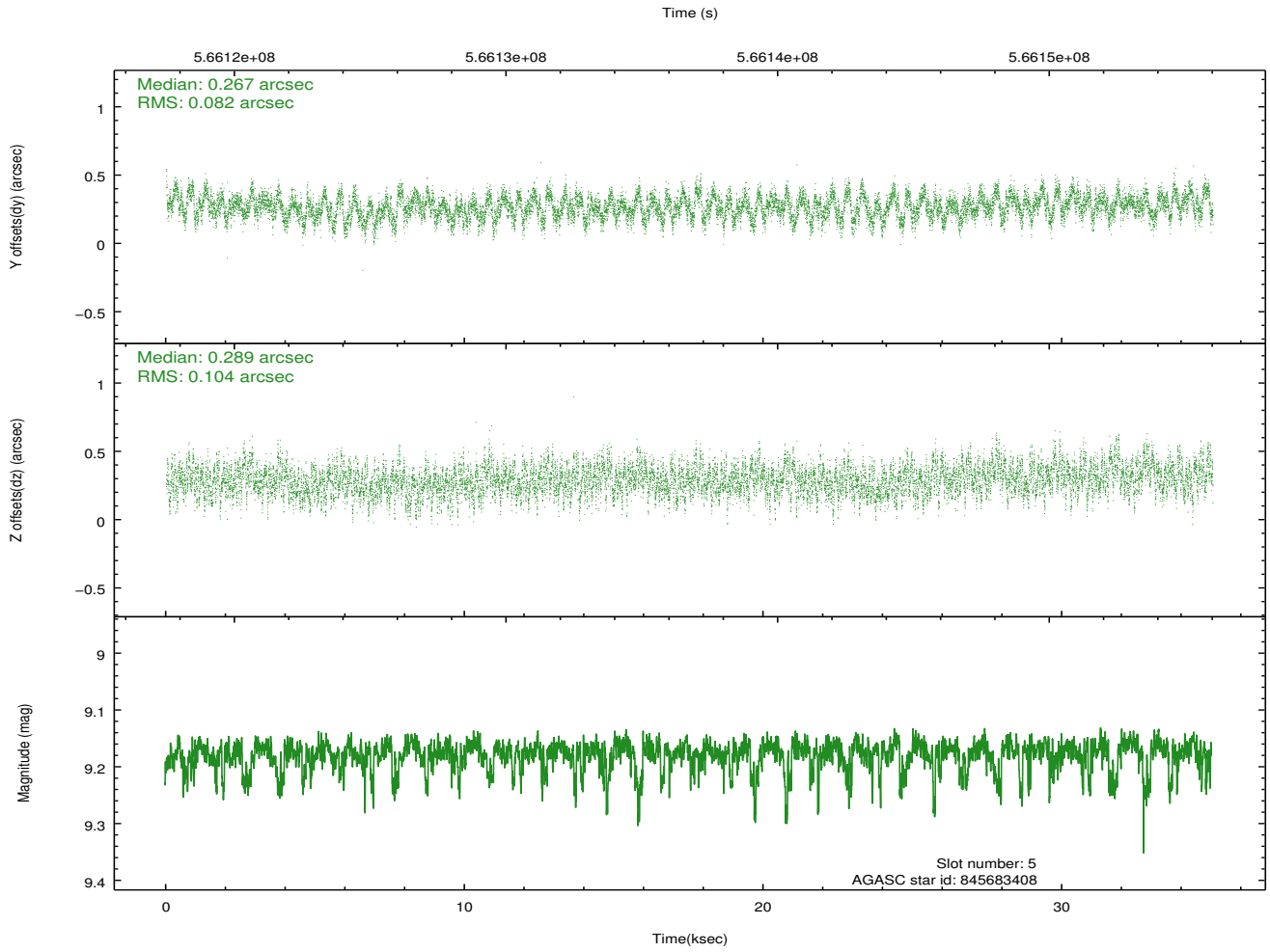
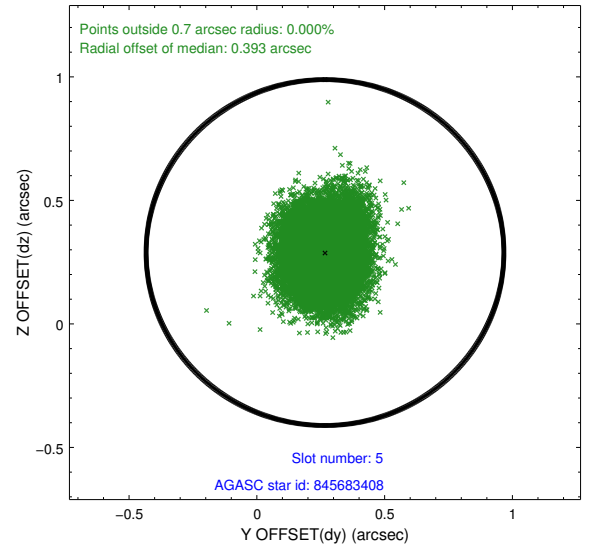
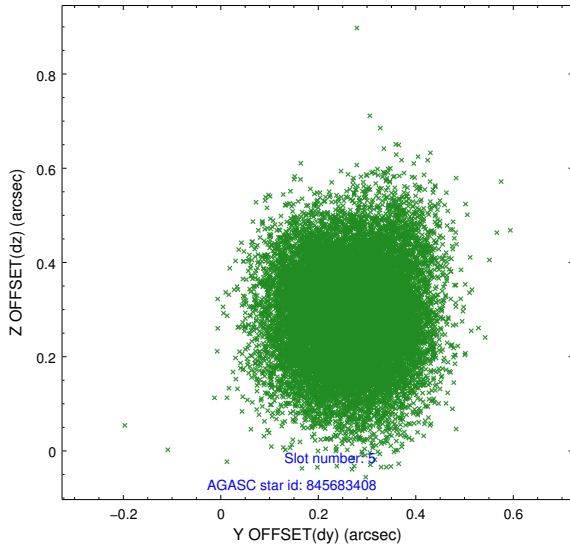
2.4.1 Slot 3



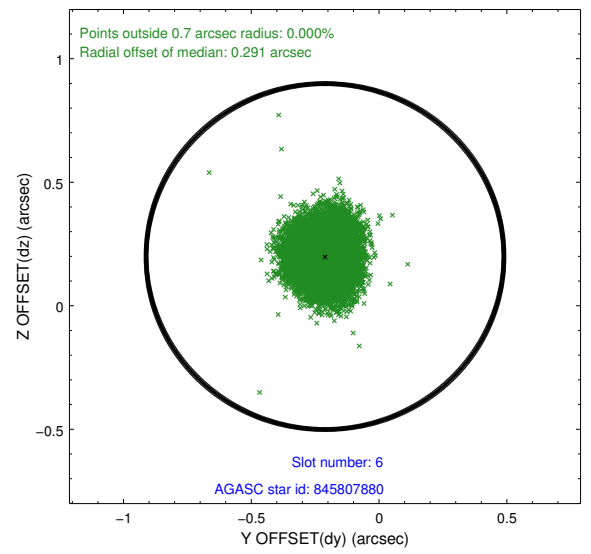
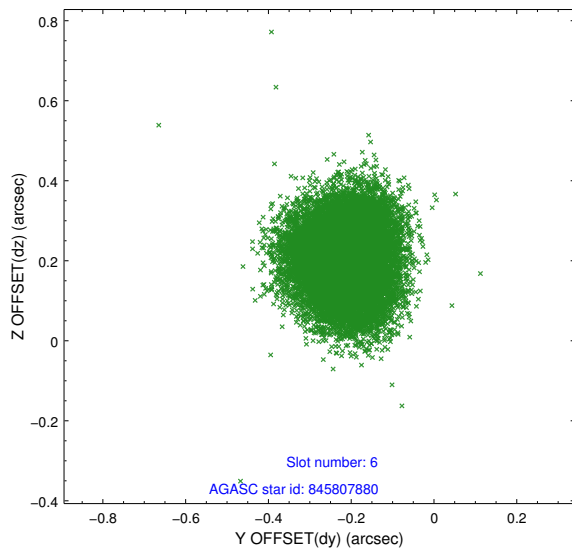
2.4.2 Slot 4



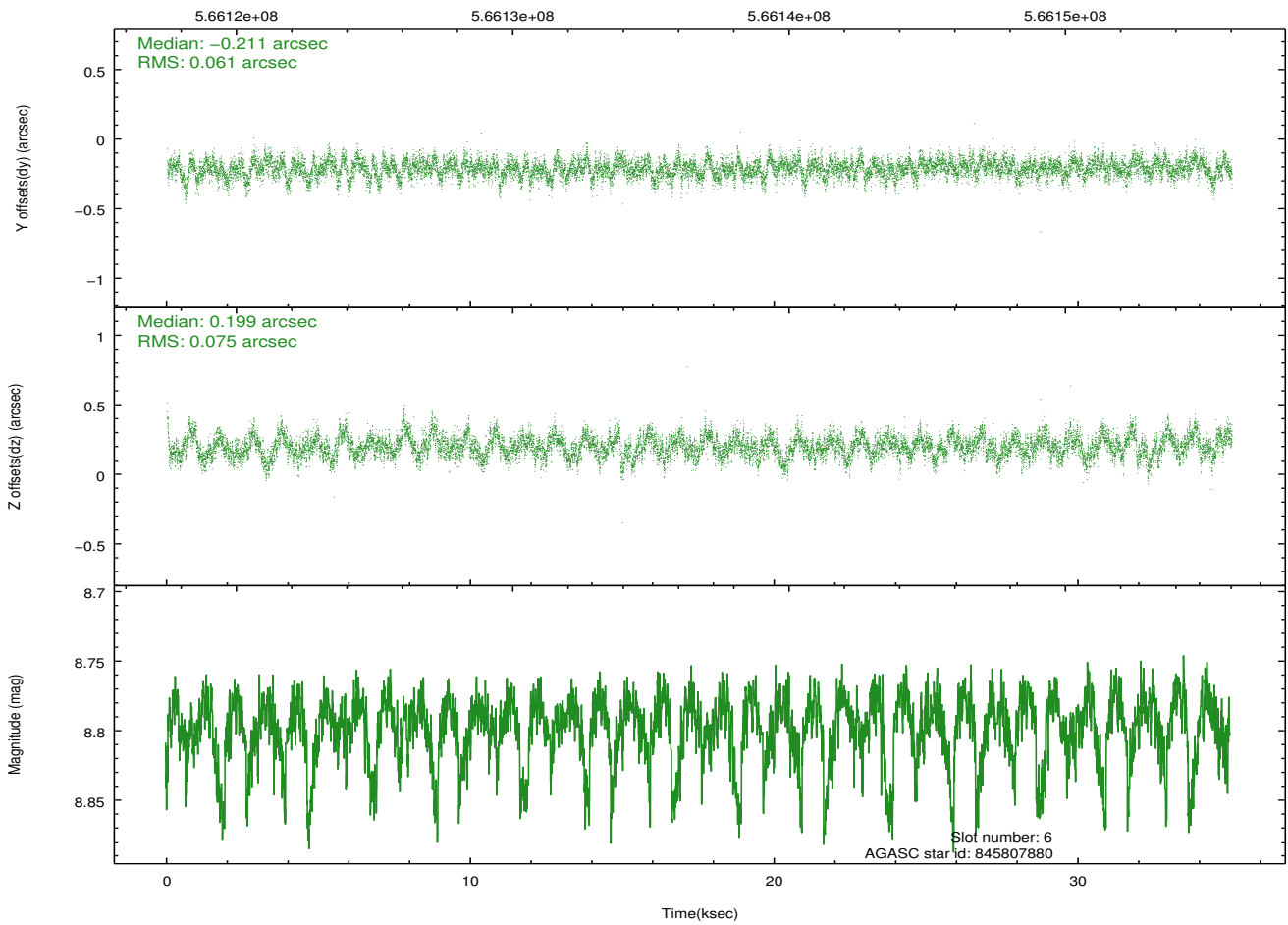
2.4.3 Slot 5



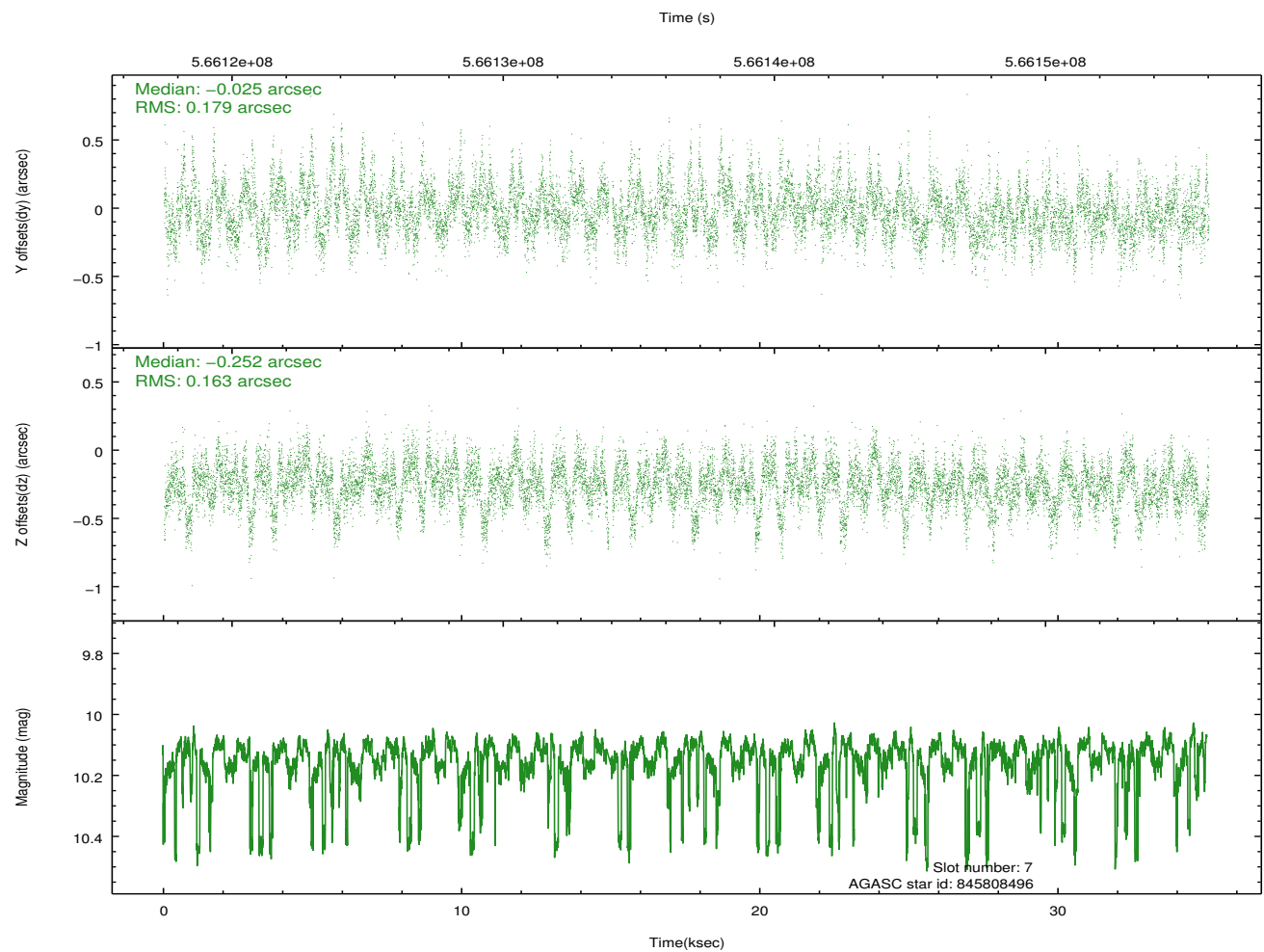
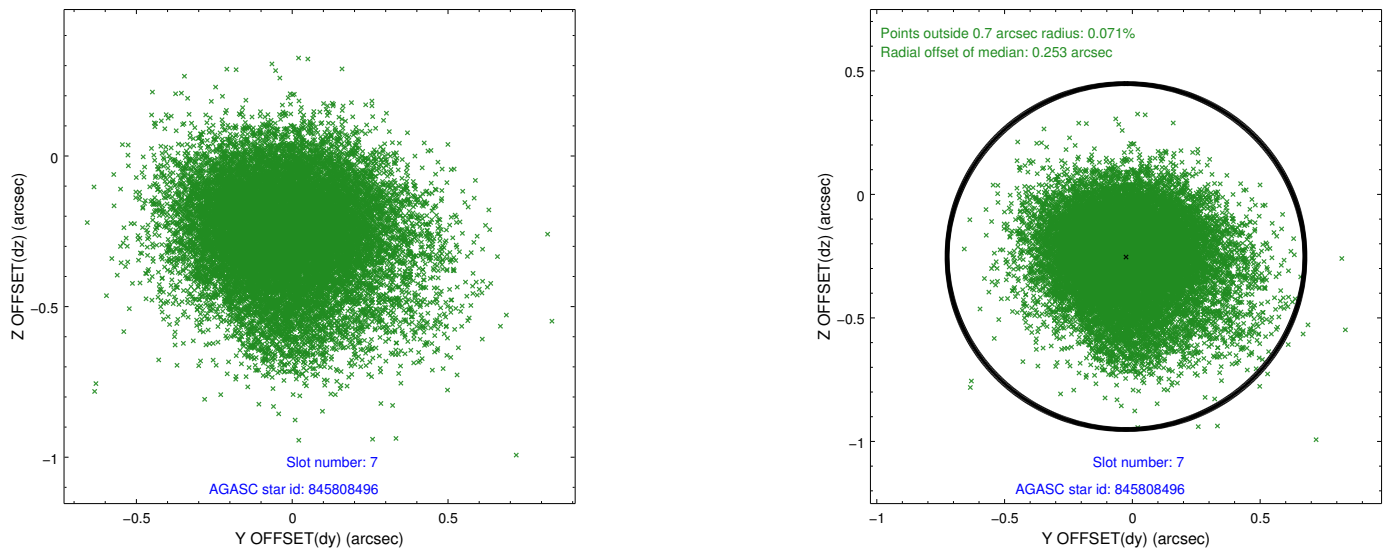
2.4.4 Slot 6



Time (s)

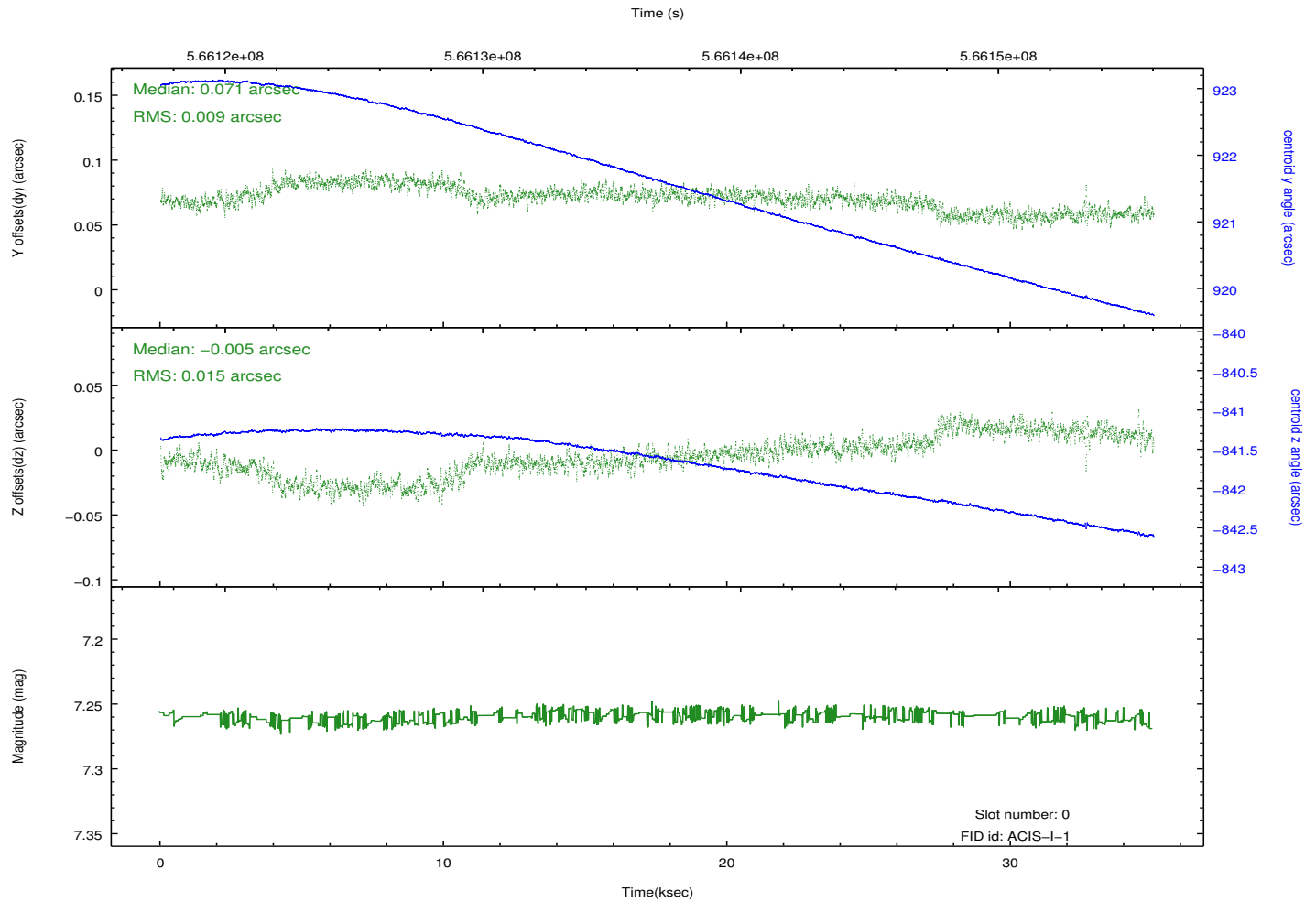
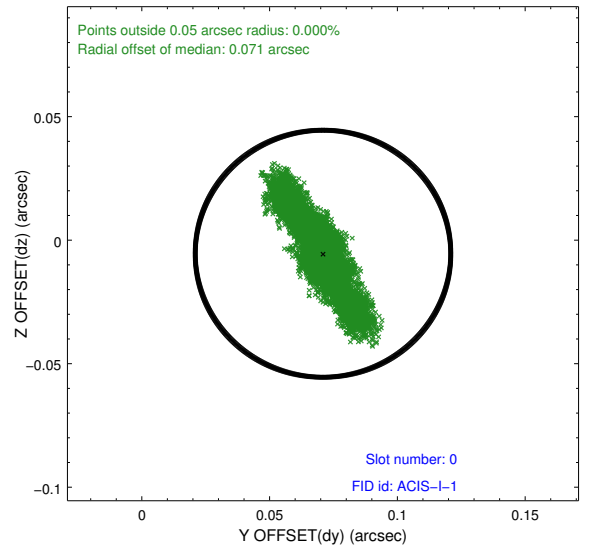
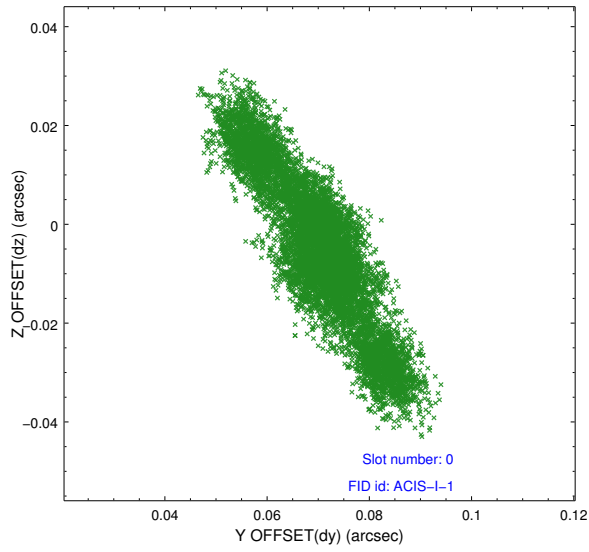


2.4.5 Slot 7

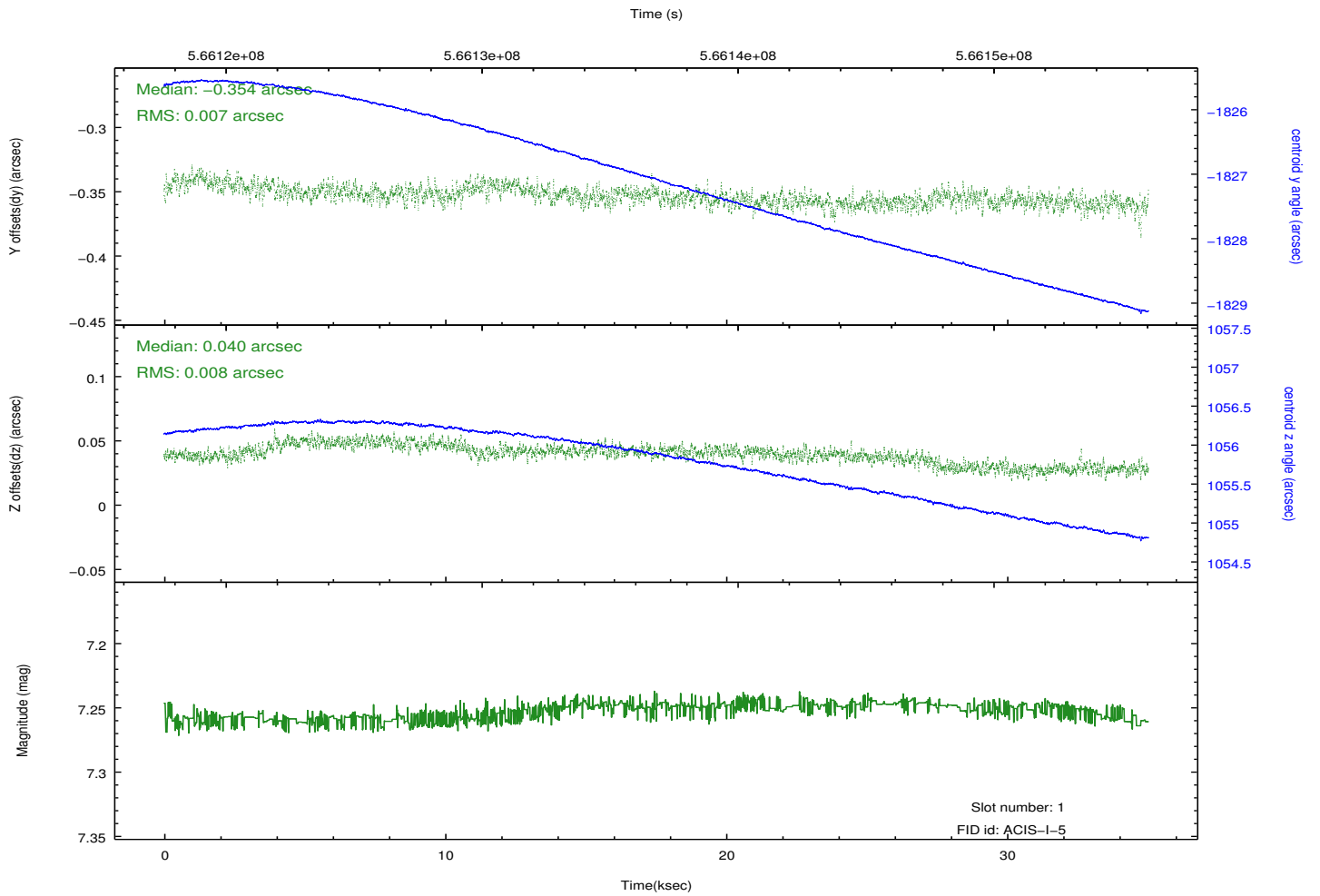
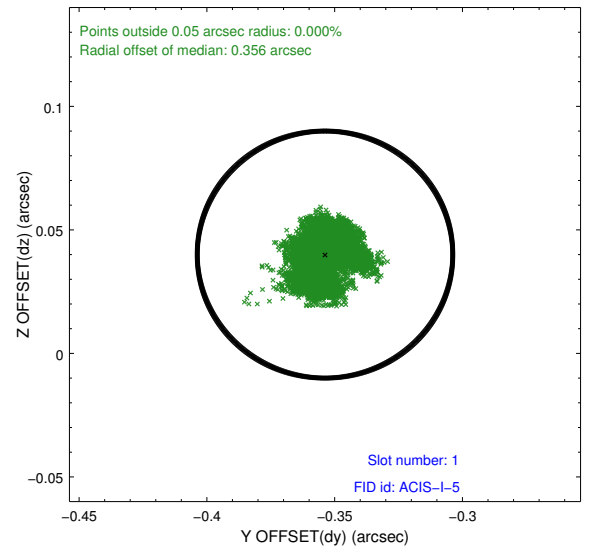
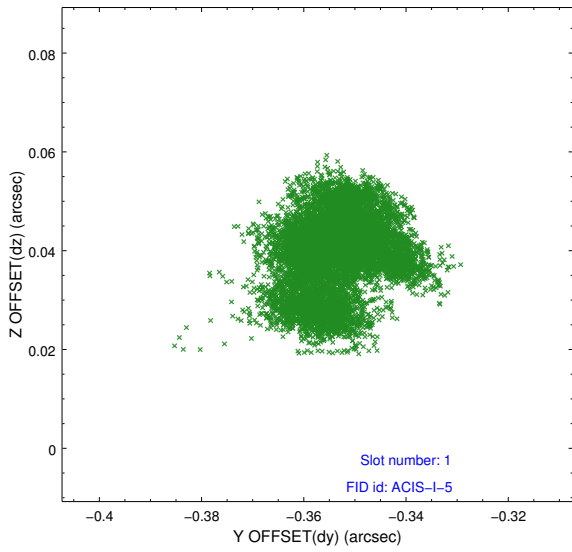


2.5 FID Slots

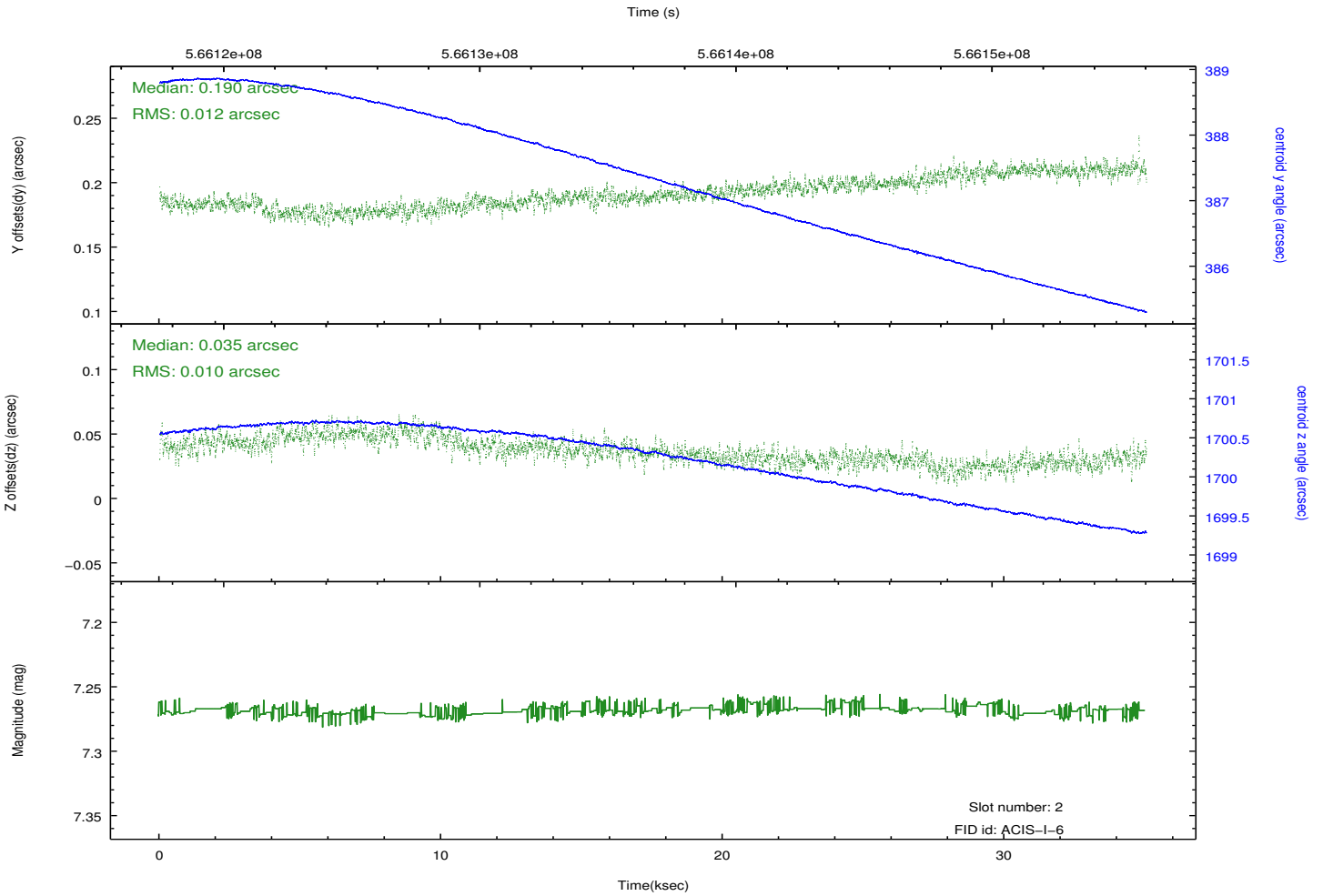
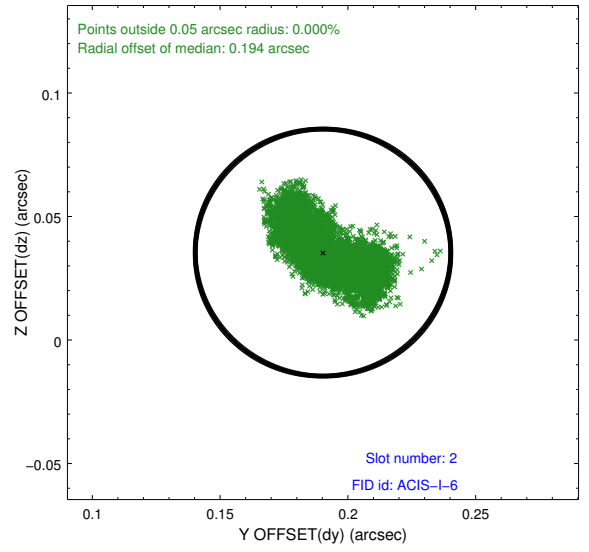
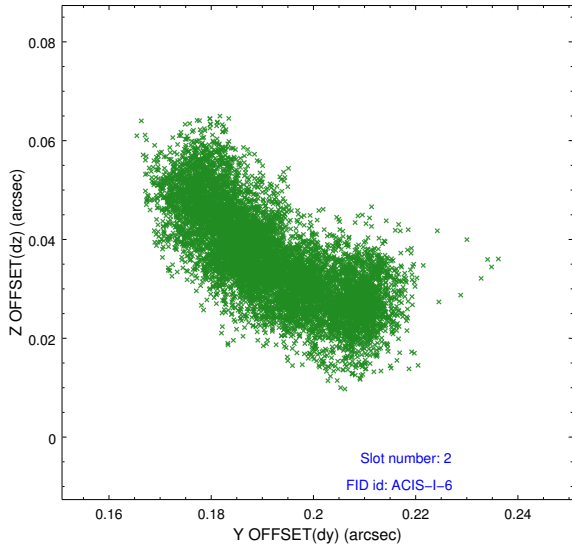
2.5.1 Slot 0



2.5.2 Slot 1



2.5.3 Slot 2



A Summary

A.1 Status

V&V Scientist	Beth Sundheim
V&V Date (YYYY-MM-DD)	2015.12.11
V&V Edition	1
V&V Disposition and Status	OK
V&V Charge Time	34.991306268692

A.2 Comments