

# V&V Reference Report

## L2 ASCDS Version : 8.4.5

Observation 19 - L2 Version 3  
Chandra X-Ray Center

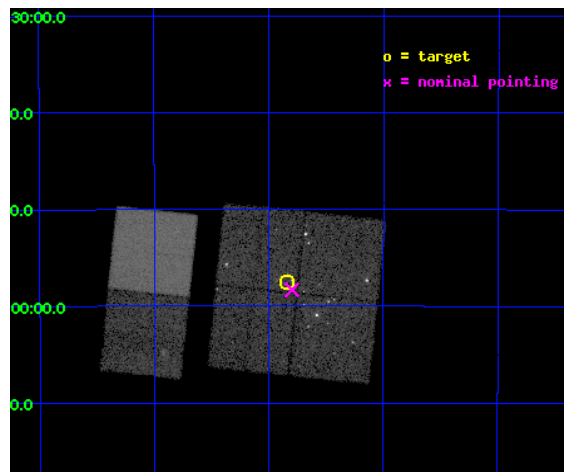
L2 Processing Date : Sep 5 2012

## Contents

<b>1</b>	<b>Front</b>	<b>2</b>
<b>2</b>	<b>OBI</b>	<b>3</b>
2.1	OBI . . . . .	3
2.1.1	Images . . . . .	3
2.1.2	Bias . . . . .	3
2.1.3	Parameters . . . . .	4
2.1.4	Events . . . . .	4
2.2	Compared Parameters . . . . .	5
2.3	Aspect . . . . .	6
2.4	Star Slots . . . . .	9
2.4.1	Slot 3 . . . . .	9
2.4.2	Slot 4 . . . . .	10
2.4.3	Slot 5 . . . . .	11
2.4.4	Slot 6 . . . . .	12
2.4.5	Slot 7 . . . . .	13
2.5	FID Slots . . . . .	14
2.5.1	Slot 0 . . . . .	14
2.5.2	Slot 1 . . . . .	15
2.5.3	Slot 2 . . . . .	16
<b>A</b>	<b>Summary</b>	<b>17</b>
A.1	Status . . . . .	17
A.2	Comments . . . . .	17

# 1 Front

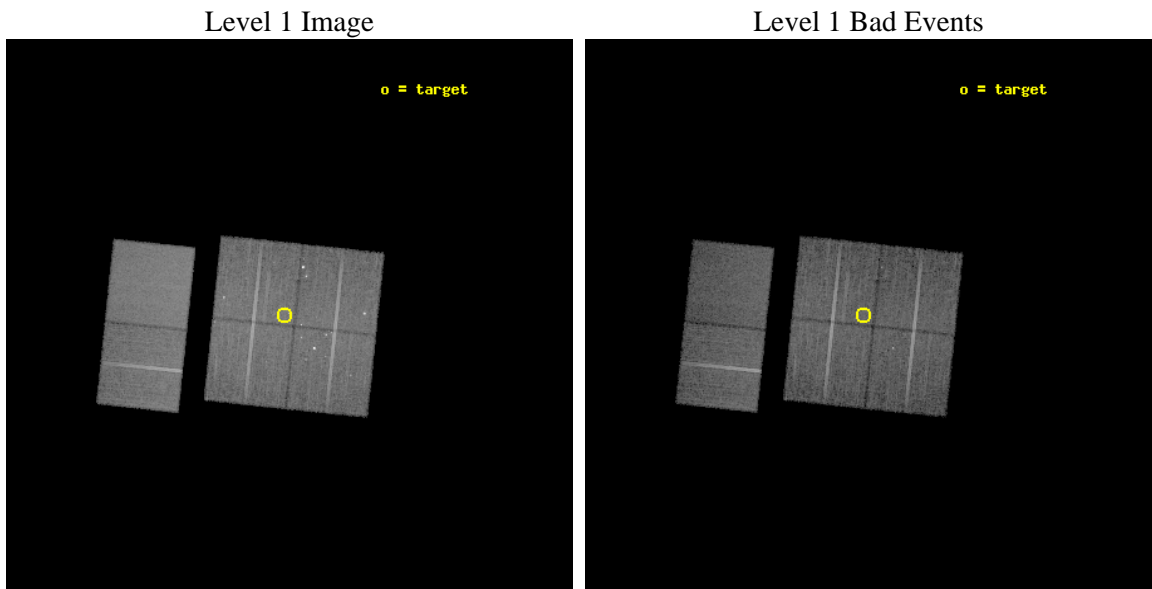
seq_num	200017	Sequence number
obs_id	19	Observation id
title	X-RAYS FROM THE YOUNGEST STARS IN THE CORONA AUSTRALIS CLOUD	Propo
observer	Professor Gordon Garmire	Principal investigator
object	CRA CLOUD CORE	Source name
dtcycle	0	&#160
cycle	P	events from which exps? Prim/Second/Both
ra_targ	285.460833	Observer's specified target RA [deg]
dec_targ	-36.958333	Observer's specified target Dec [deg]
ra_nom	285.44976216224	Nominal RA [deg]
dec_nom	-36.972116857013	Nominal Dec [deg]
roll_nom	276.01236613062	Nominal Roll [deg]
revision	3	Processing version of data
ontime	19957.982100472	Sum of GTIs [s]
livetime	19705.262113862	Livetime [s]
ontime0	19957.858980477	Sum of GTIs [s]
ontime1	19957.90002048	Sum of GTIs [s]
ontime2	19957.941060483	Sum of GTIs [s]
ontime3	19957.982100472	Sum of GTIs [s]
ontime6	19954.823200315	Sum of GTIs [s]
ontime7	19958.023140475	Sum of GTIs [s]
l2events	134173	Number of level 2 events



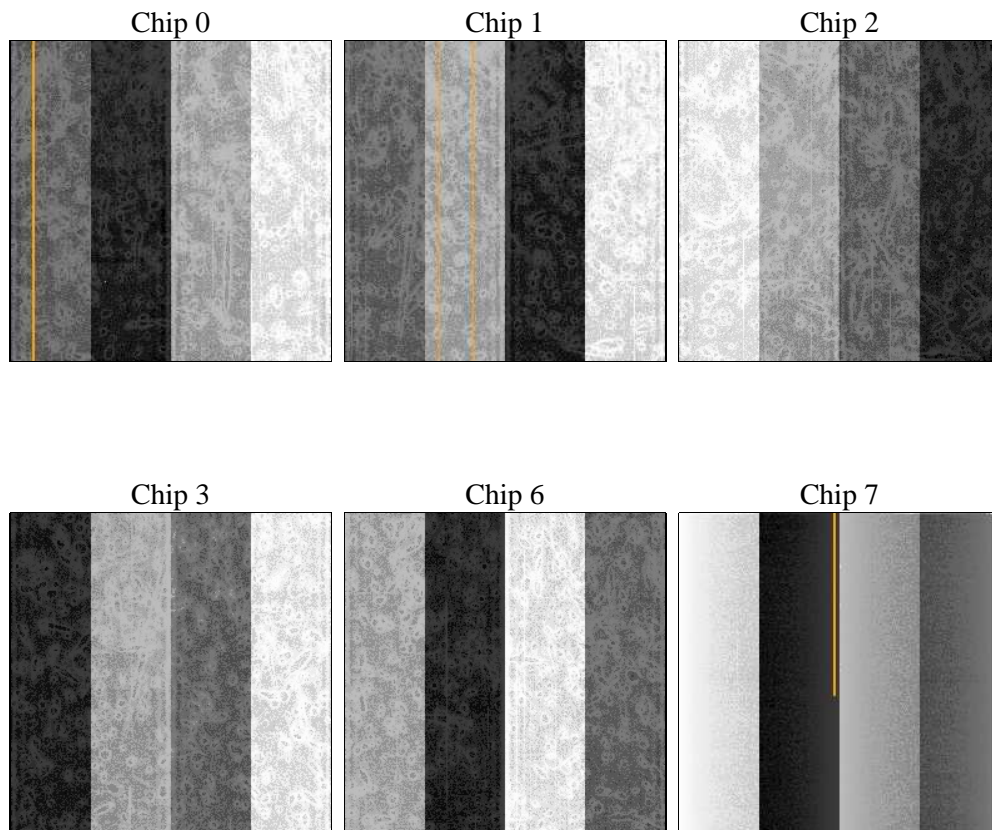
## 2 OBI

### 2.1 OBI

#### 2.1.1 Images



#### 2.1.2 Bias



### 2.1.3 Parameters

obi_num	0	Obi number	sched_exp_time	20000.000000	[s] Scheduled observation exposure time
ascdsver	8.4.5	Processing system revision	ontime	19957.982100472	Sum of GTIs [s]
caldsver	4.5.1.1	&#160	ontime0	19957.858980477	Sum of GTIs [s]
date	2012-09-05T15:45:13	Date and time of file creation	ontime1	19957.90002048	Sum of GTIs [s]
revision	3	Processing version of data	ontime2	19957.941060483	Sum of GTIs [s]
			ontime3	19957.982100472	Sum of GTIs [s]
			ontime6	19954.823200315	Sum of GTIs [s]
			ontime7	19958.023140475	Sum of GTIs [s]
			l1events	754316	Number of level 1 events

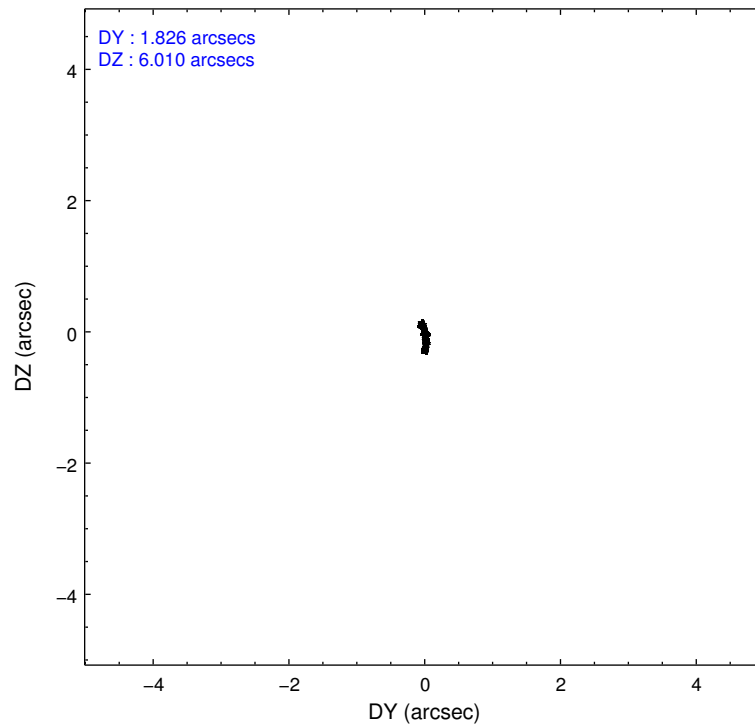
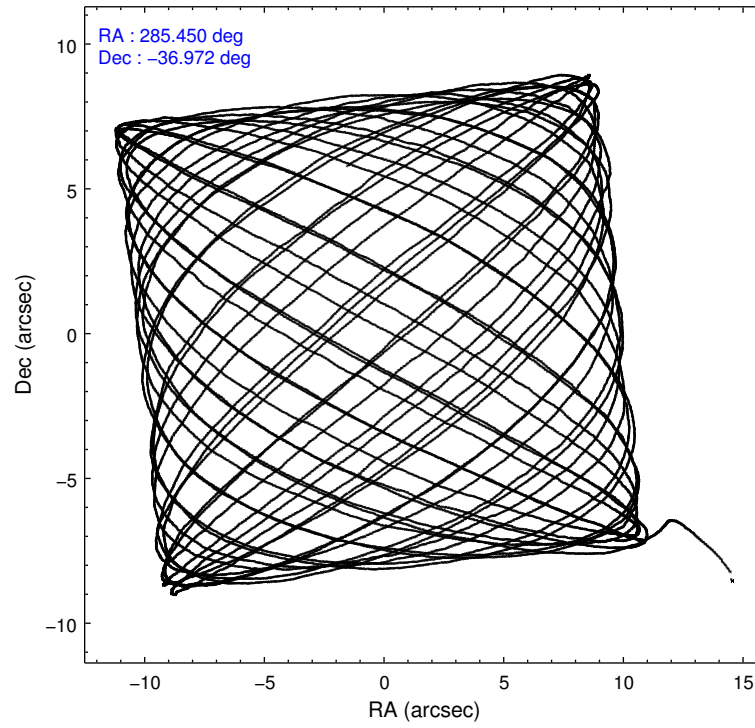
### 2.1.4 Events

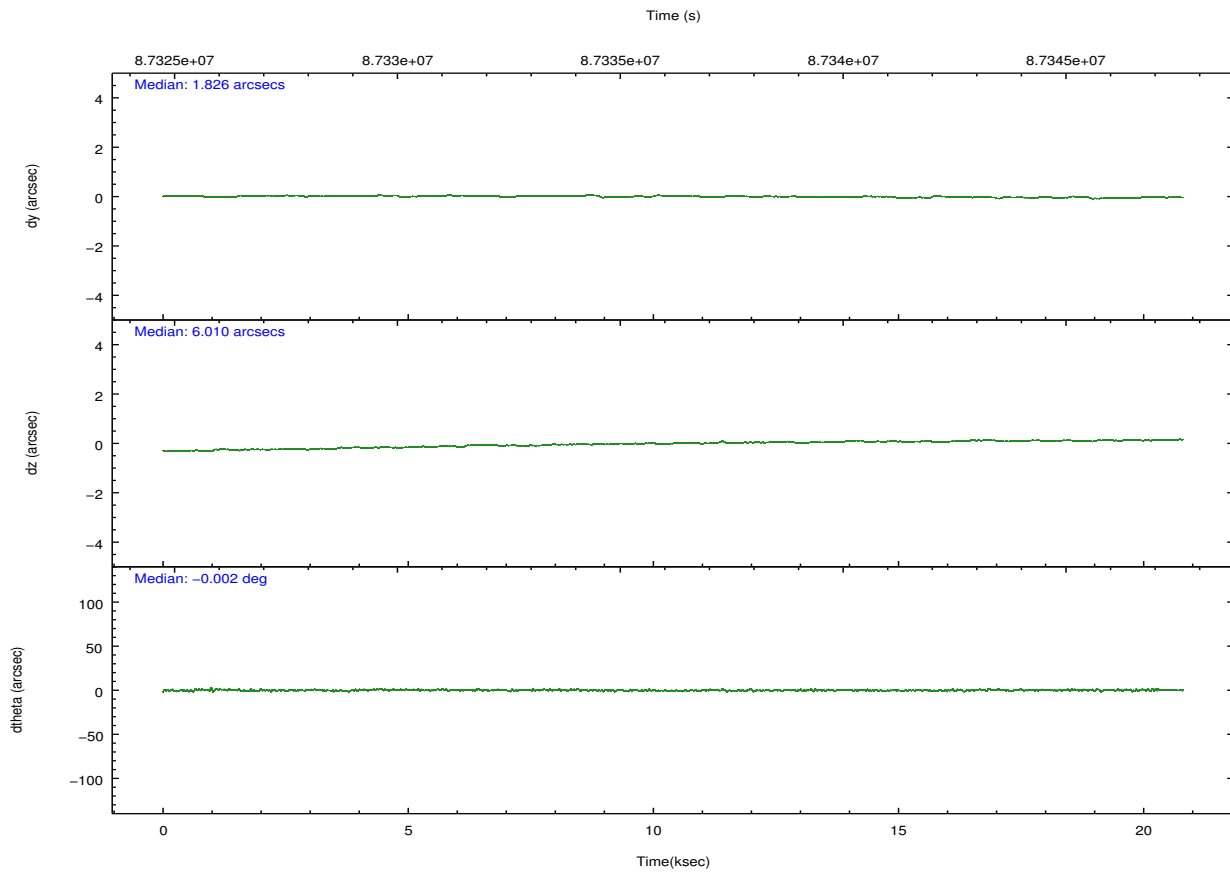
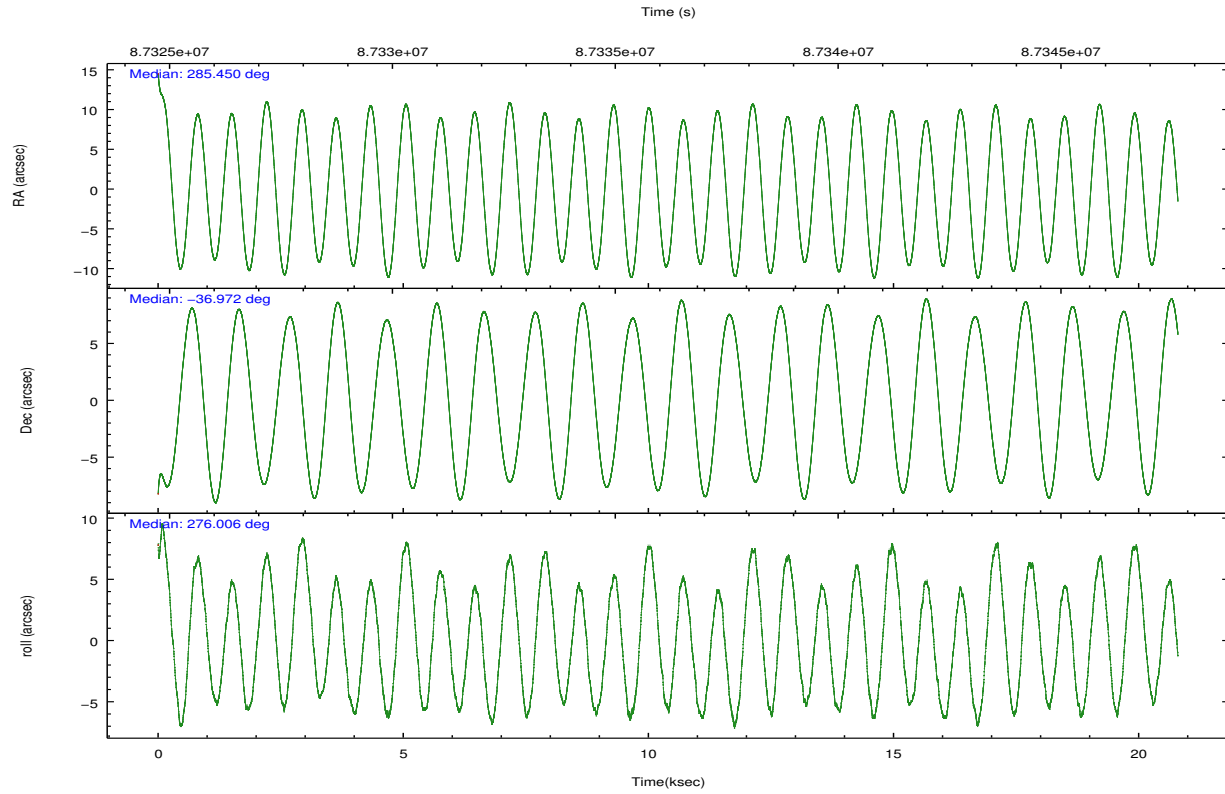
	ccd 0	ccd 1	ccd 2	ccd 3	ccd 6	ccd 7		ccd 0	ccd 1	ccd 2	ccd 3	ccd 6	ccd 7
level 1 events	117788	119681	121869	122301	125680	146997	grade 0 events	12085	13161	5812	6996	5276	5700
rejected events	96296	96394	108698	107379	112375	86152		10%	10%	4%	5%	4%	3%
rejected %	81%	80%	89%	87%	89%	58%	grade 1 events	414	191	59	54	46	130
								0%	0%	0%	0%	0%	0%
							grade 2 events	3645	3704	2739	2776	2632	11904
								3%	3%	2%	2%	2%	8%
							grade 3 events	1676	1828	1234	1342	1409	5637
								1%	1%	1%	1%	1%	3%
							grade 4 events	1523	1732	1206	1394	1320	5405
								1%	1%	0%	1%	1%	3%
							grade 5 events	4233	4473	3954	4390	4904	13886
								3%	3%	3%	3%	3%	9%
							grade 6 events	2567	2862	2183	2419	2670	32210
								2%	2%	1%	1%	2%	21%
							grade 7 events	91645	91730	104682	102930	107423	72125
								77%	76%	85%	84%	85%	49%

## 2.2 Compared Parameters

Parameter	Planned	Actual	Parameter	Planned	Actual
Instrument	ACIS	ACIS	Obspar format version number	7	7
Detector	ACIS-012367	ACIS-012367	Obspar file type	PREDICTED	ACTUAL
Grating	NONE	NONE	Obspar update status	NONE	UPDATED
Data mode	FAINT	FAINT	Number of optional ACIS chips dropped	0	0
Observation mode	POINTING	POINTING	On-chip summing requested	N	N
[deg] Pointing RA	285.429565	285.4497621622447	Subarray requested	NONE	NONE
[deg] Pointing Dec	-36.949815	-36.97211685701303	Alternating exposures requested	N	N
[deg] Pointing Roll	275.791542	276.012366130615	[s] Primary exposure time	0.000000	3.2
[mm] SIM focus pos	-0.782348	-0.7809083437167272			
[mm] SIM defocus	0	0.001439871863259334			
[mm] SIM translation stage pos	-233.592463	-233.5874344608287			
[mm] SIM translation stage offset	0	-0.005018542100998502			
[s] Observation start time (MET)	87326584.184000	87325319.25845499			
Observation start date	2000-10-07T17:22:00	2000-10-07T17:01:59			
[s] Observation end time (MET)	87346584.184000	87347461.30929101			
Observation end date	2000-10-07T22:55:20	2000-10-07T23:11:01			
Read mode	TIMED	TIMED			

## 2.3 Aspect



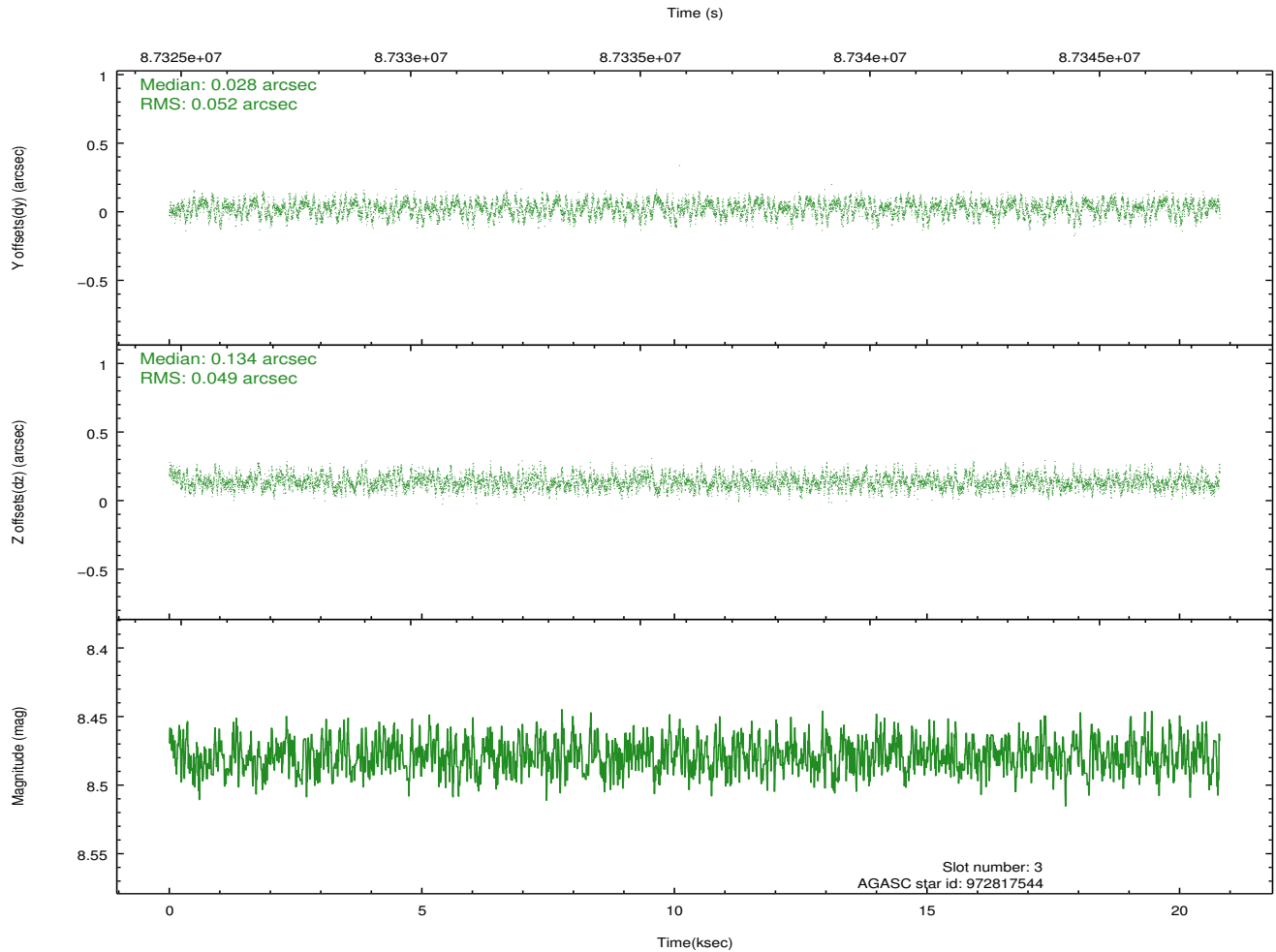
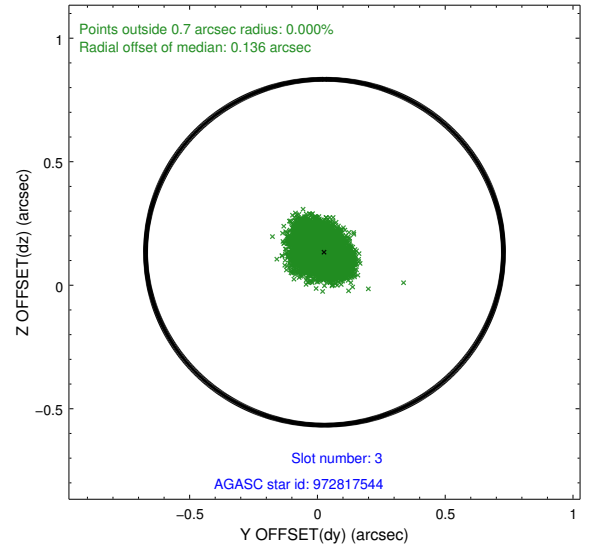
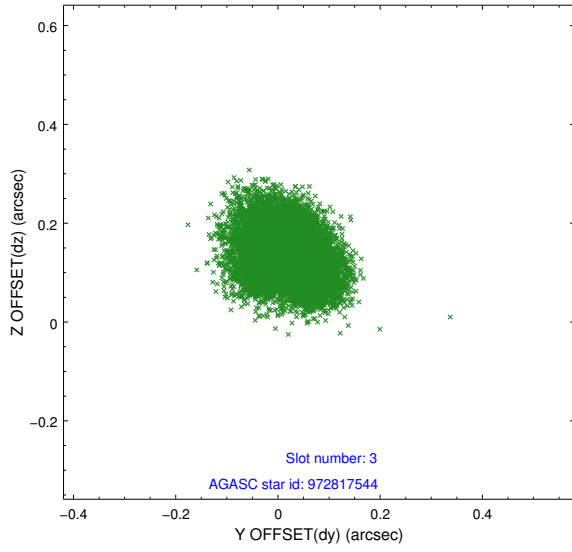


### Slot Statistics

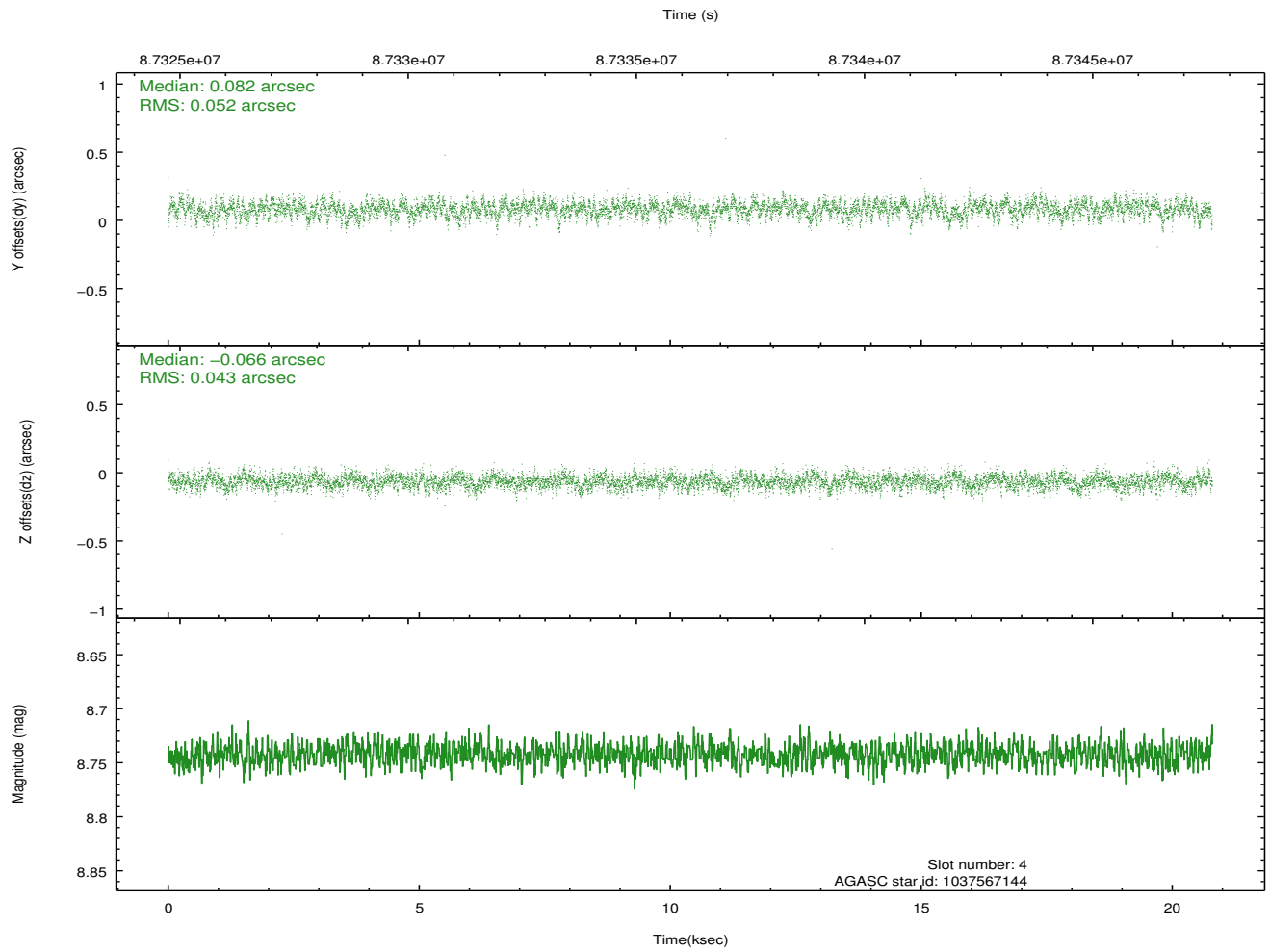
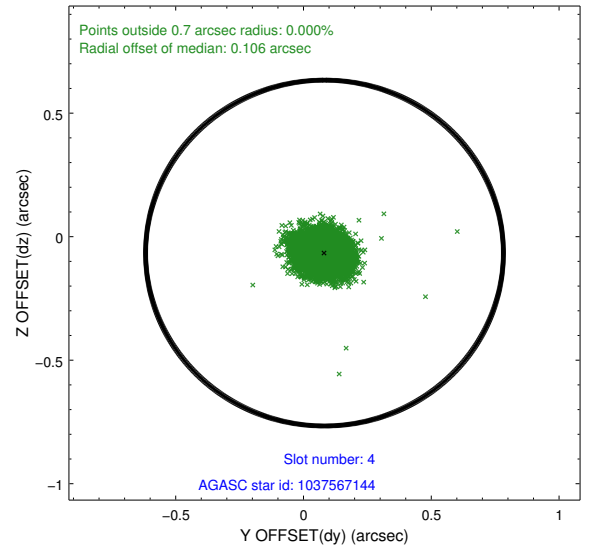
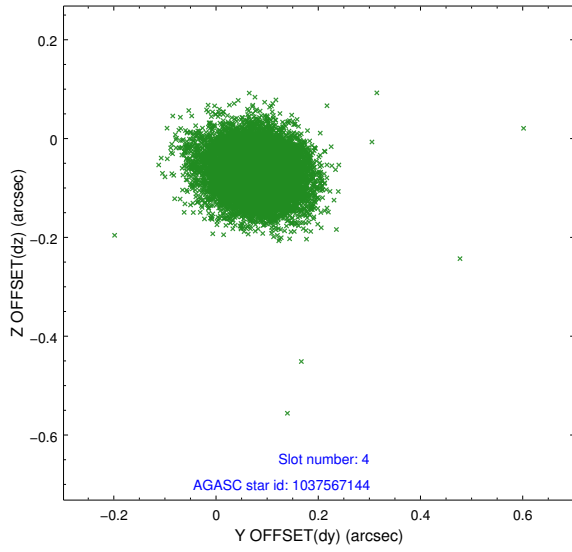
slot	status	id	mag	n_pts	med_dy	med_dz	dr1	dr2	ra	dec	mean_y	mean_z
0	FID	ACIS-I-2	7.15	5073	-0.042	-0.062	0.009	0.017	0.000000	0.000000	-756.21	-835.77
1	FID	ACIS-I-4	7.18	5073	-0.024	0.048	0.006	0.011	0.000000	0.000000	2157.78	1070.43
2	FID	ACIS-I-5	7.23	5074	-0.035	0.083	0.009	0.016	0.000000	0.000000	-1809.81	1068.51
3	GUIDE	972817544	8.48	10142	0.028	0.134	0.078	0.122	286.185059	-36.844707	-149.13	2203.12
4	GUIDE	1037567144	8.74	10143	0.082	-0.066	0.071	0.116	284.940440	-37.605390	2210.43	-1625.83
5	GUIDE	972694616	8.71	10143	-0.183	0.080	0.067	0.110	285.528297	-36.361626	-2078.33	498.43
6	GUIDE	972693800	9.23	10142	-0.133	-0.028	0.079	0.132	285.460080	-36.664658	-1013.43	191.46
7	GUIDE	972692568	9.63	10137	0.208	-0.125	0.082	0.133	285.064965	-37.263950	1021.26	-1153.33

## 2.4 Star Slots

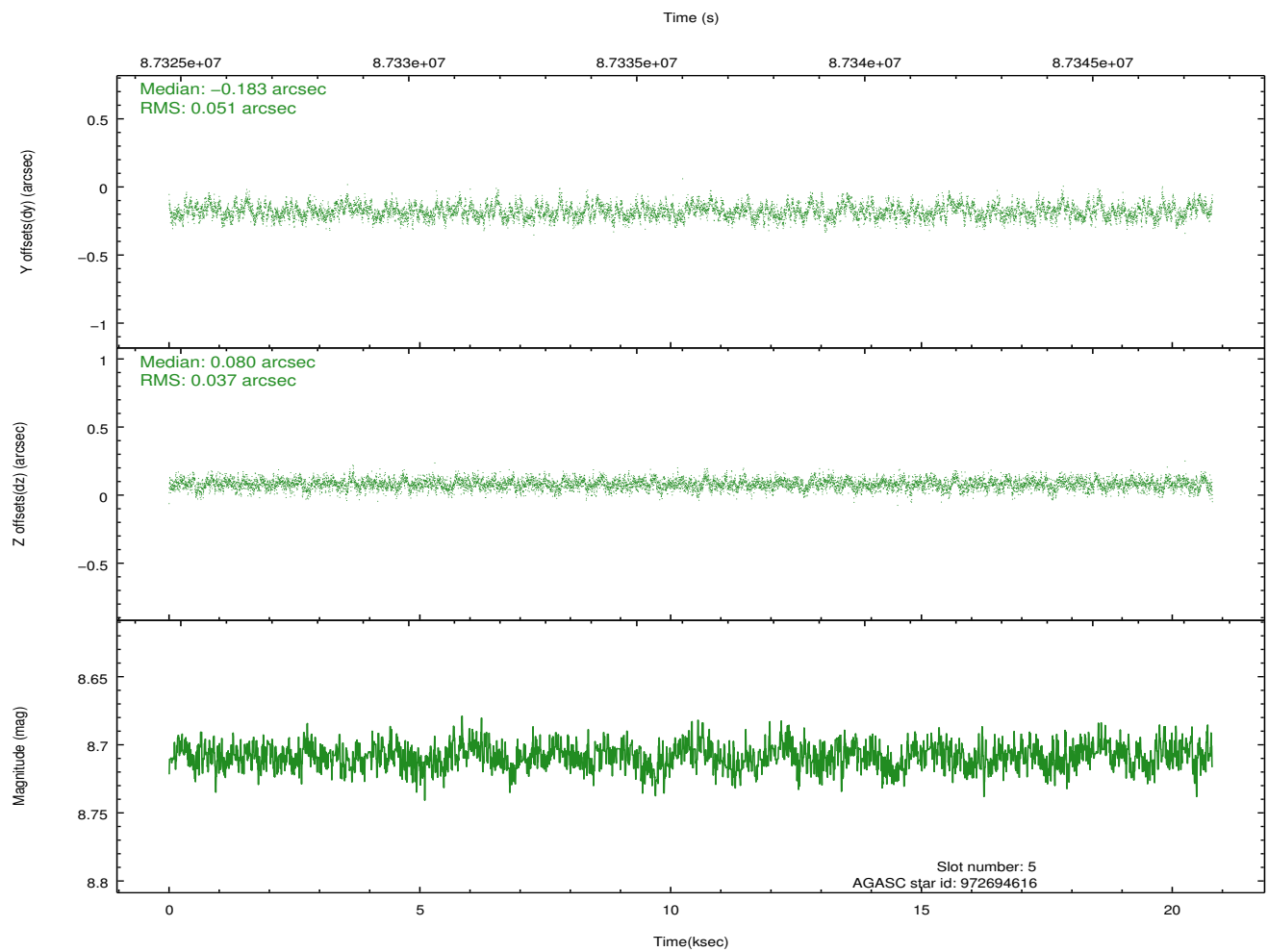
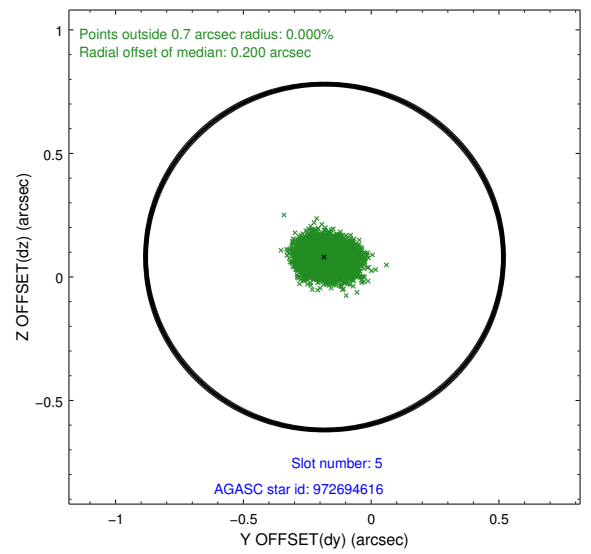
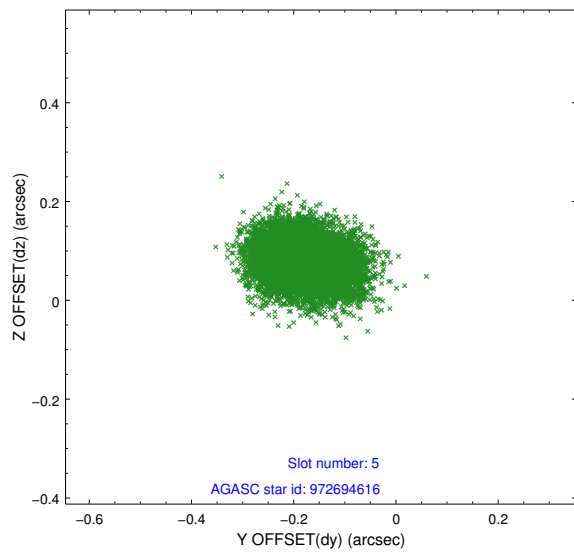
### 2.4.1 Slot 3



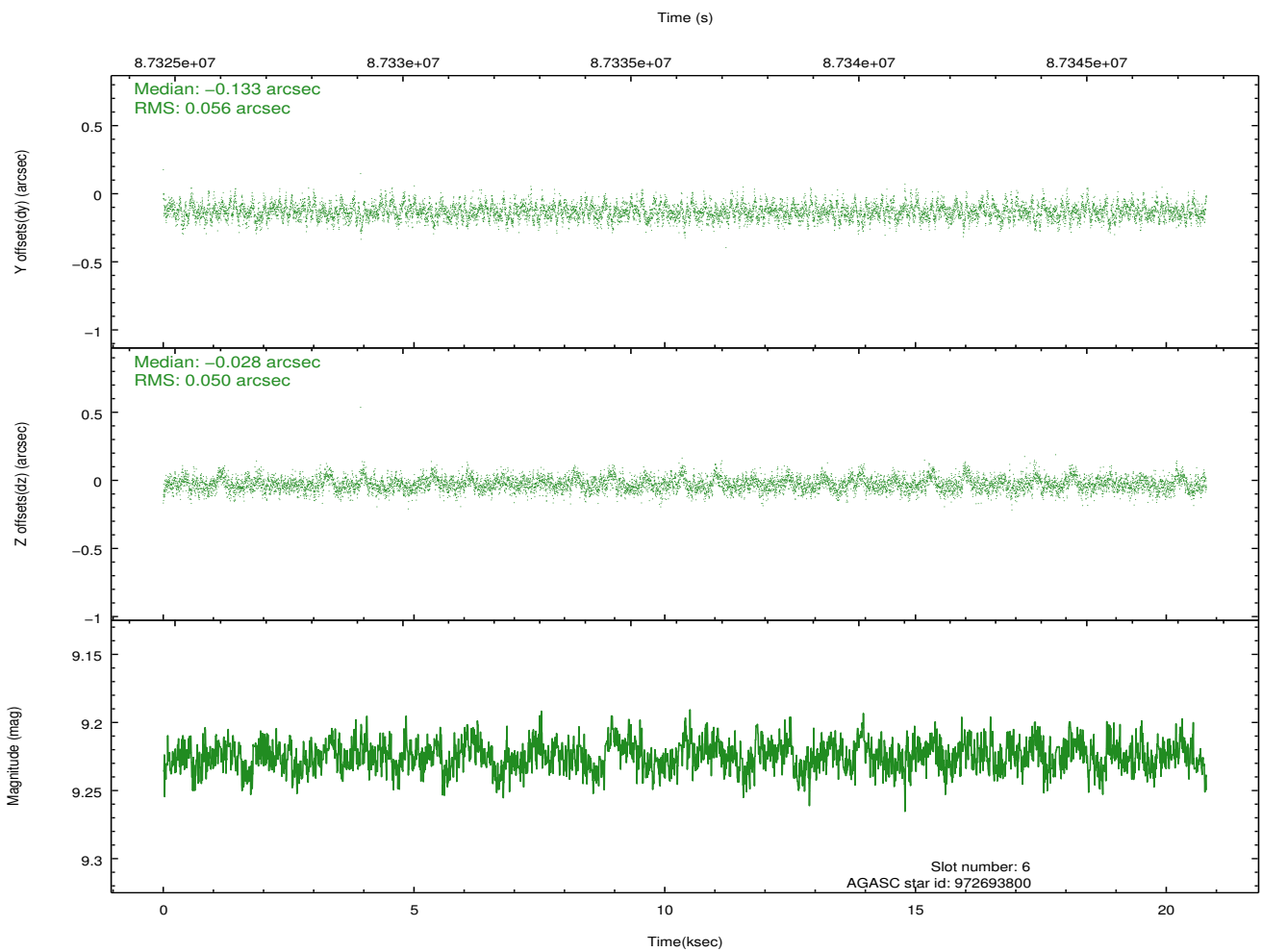
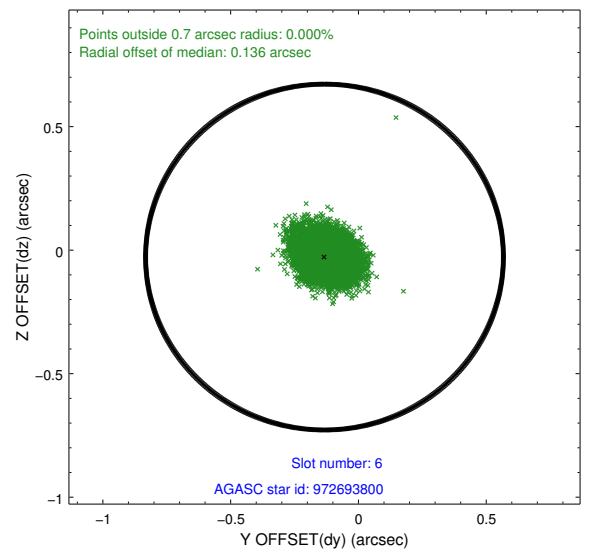
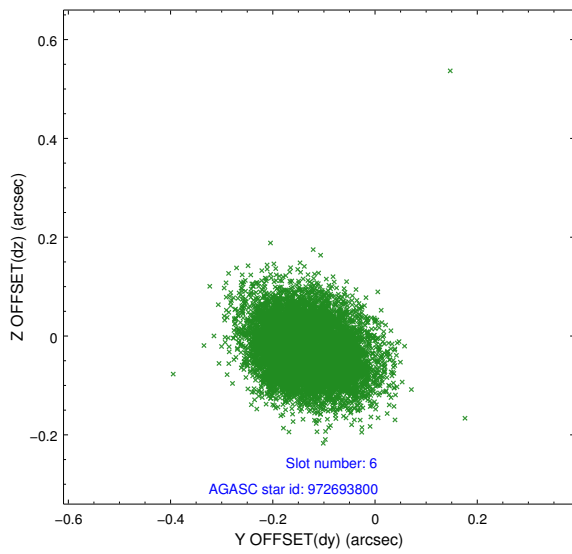
## 2.4.2 Slot 4



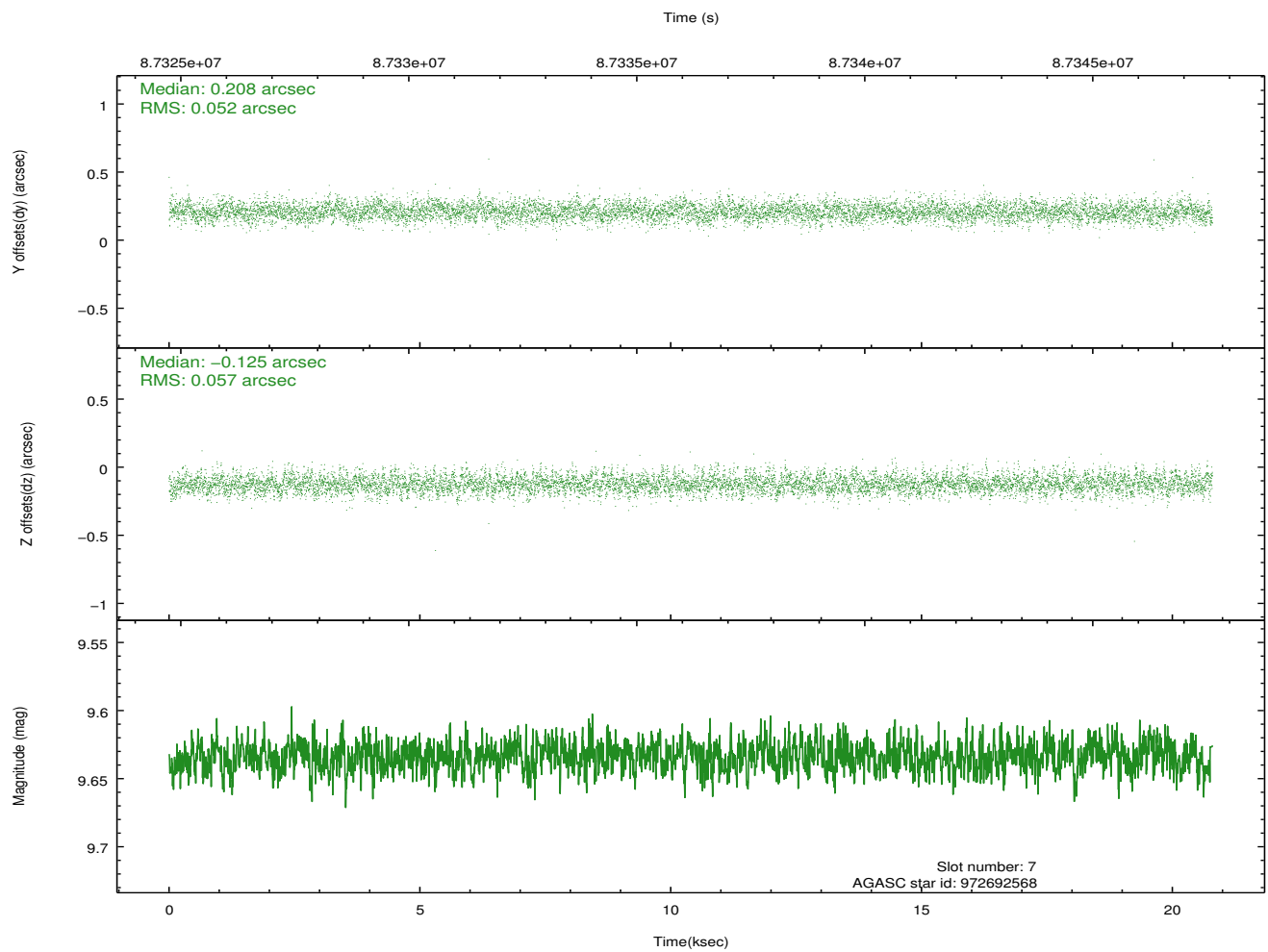
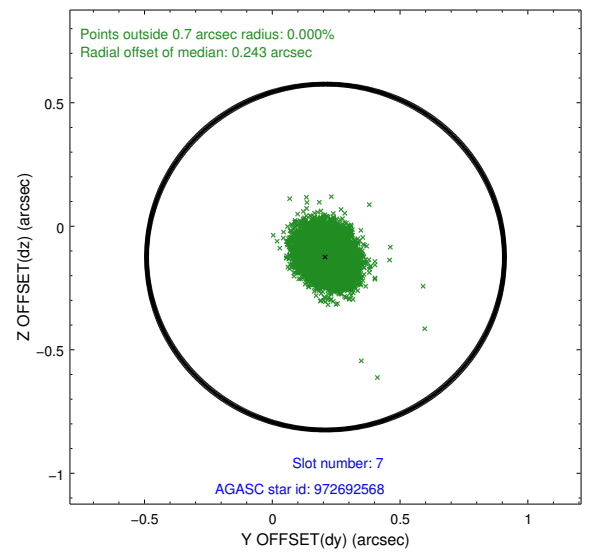
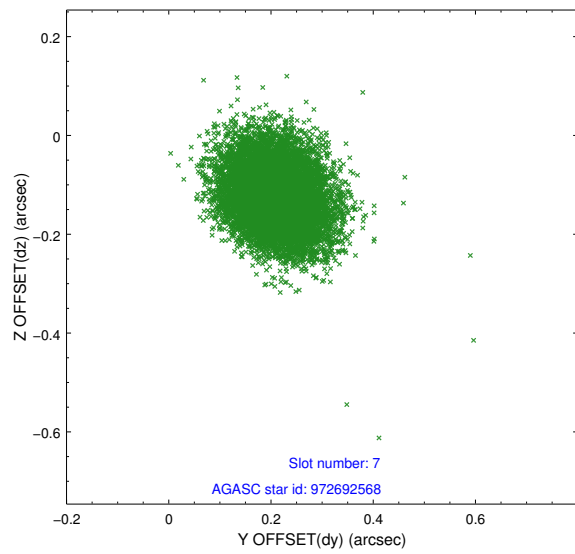
### 2.4.3 Slot 5



## 2.4.4 Slot 6

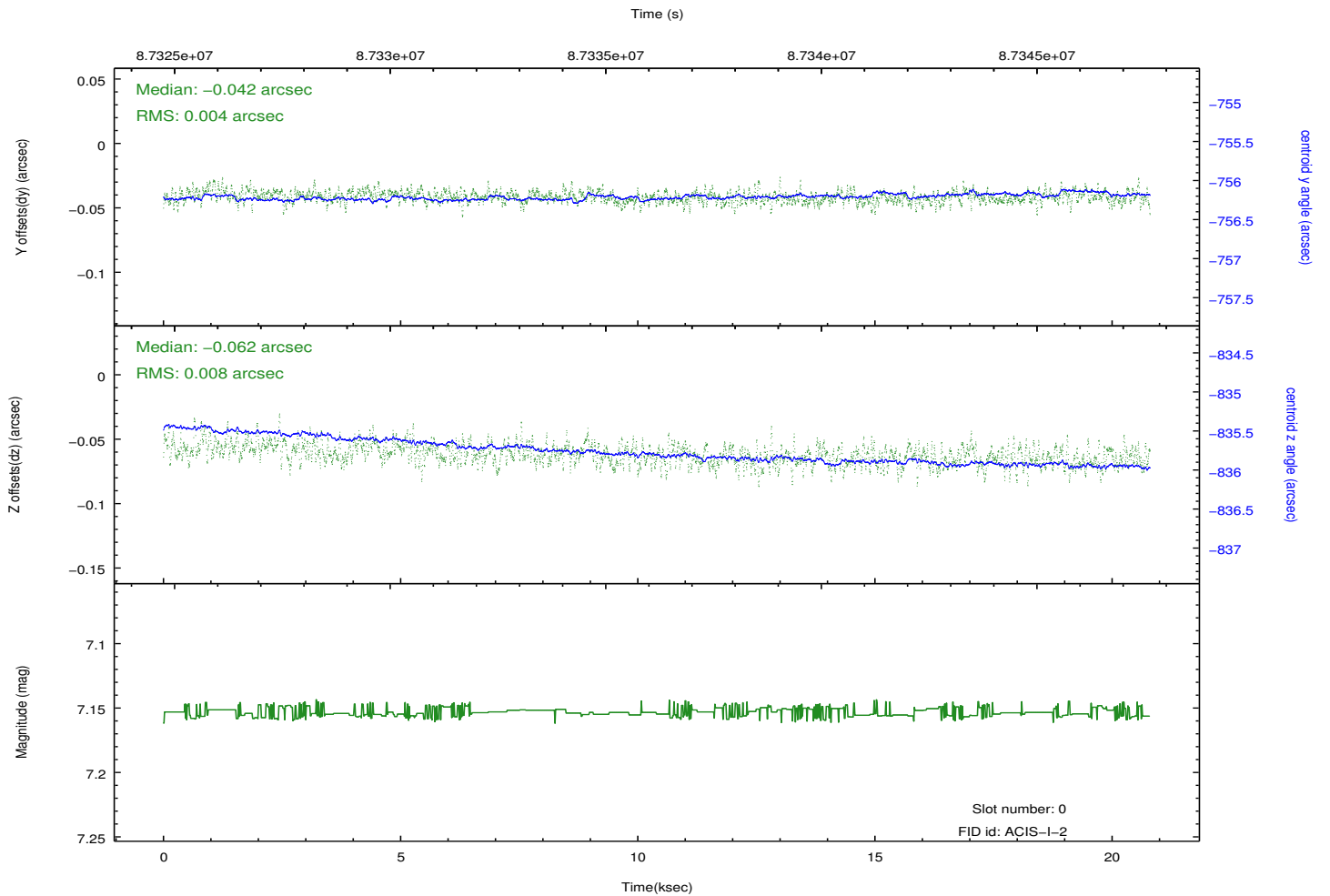
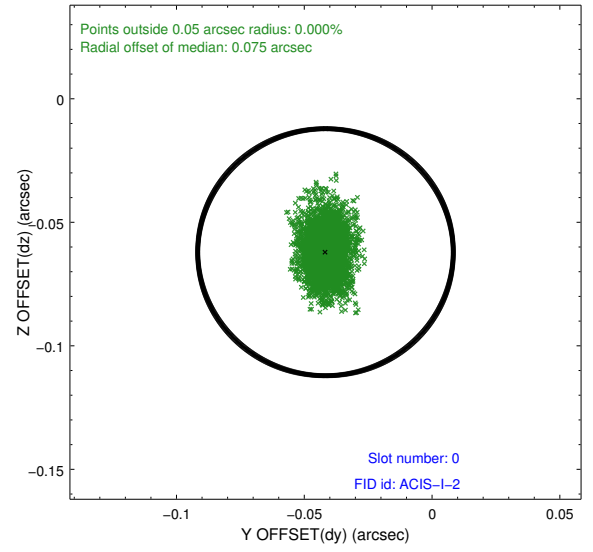
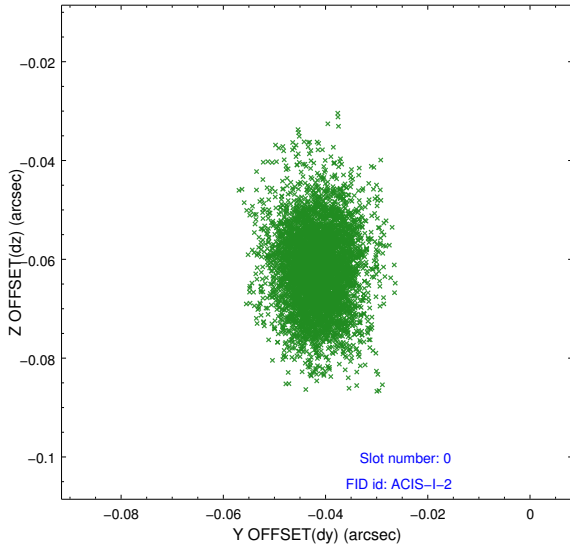


## 2.4.5 Slot 7

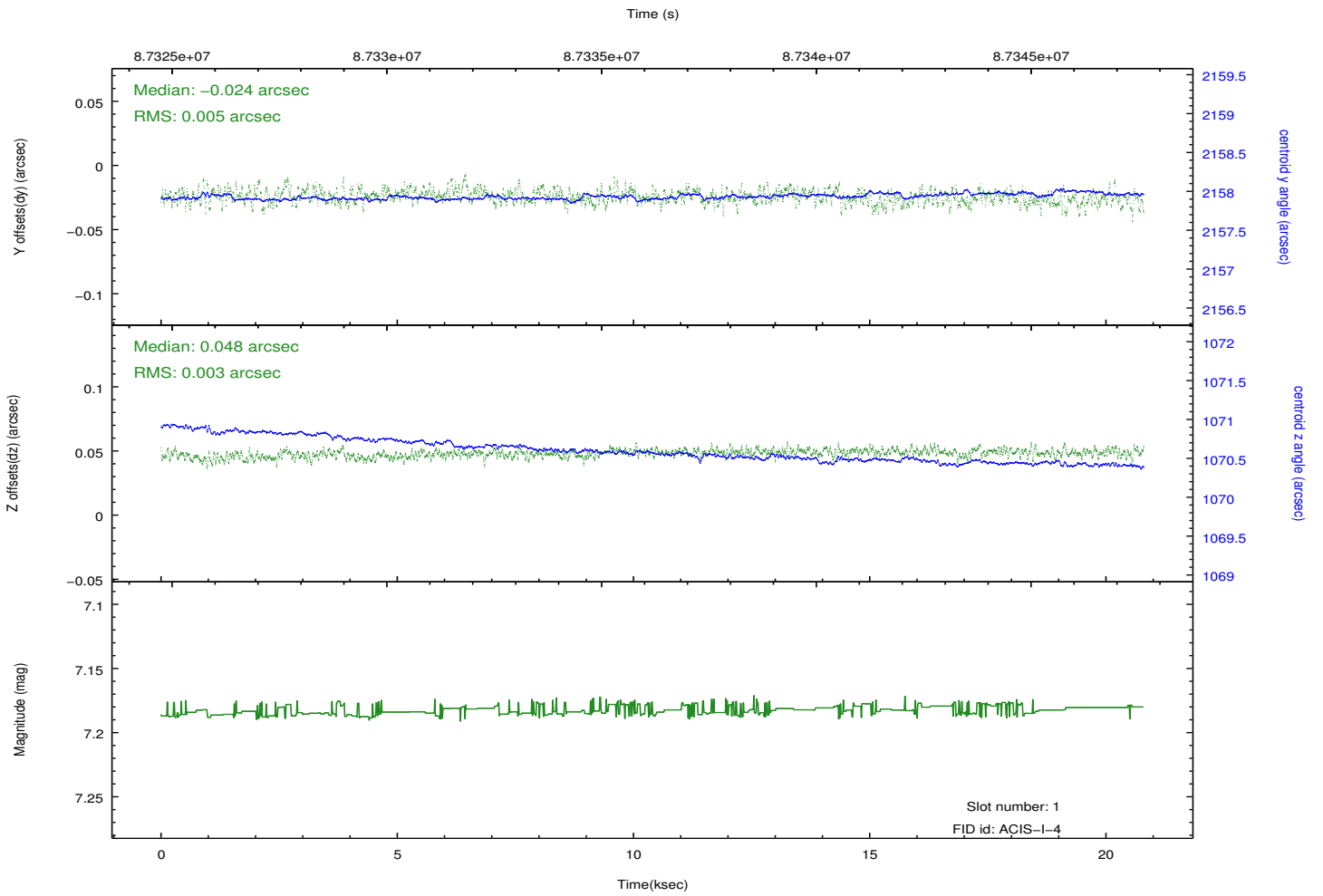
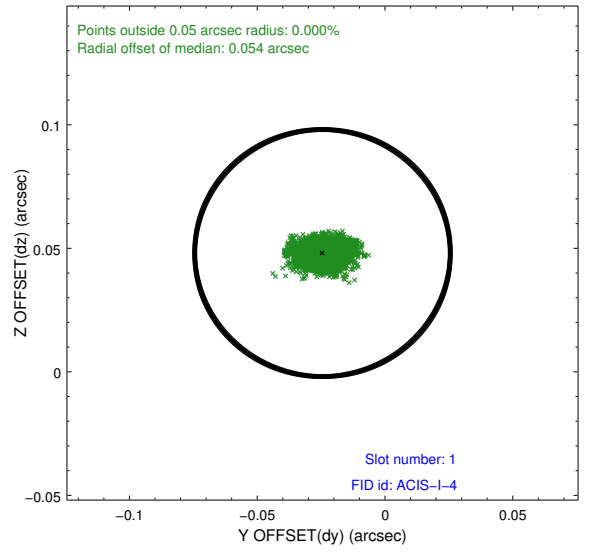
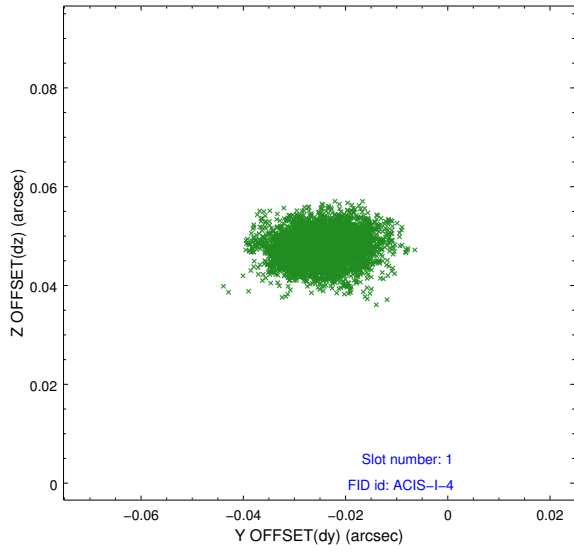


## 2.5 FID Slots

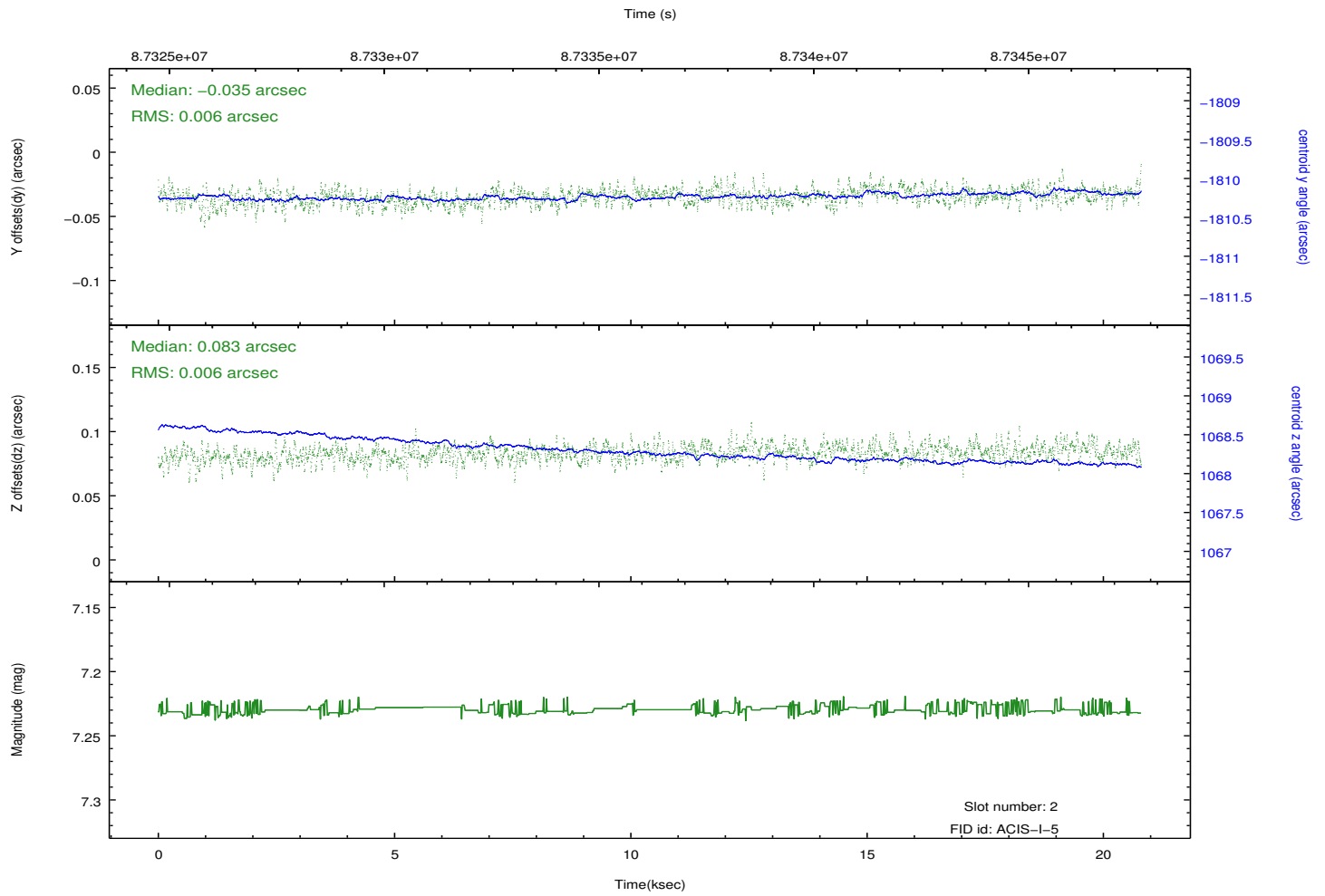
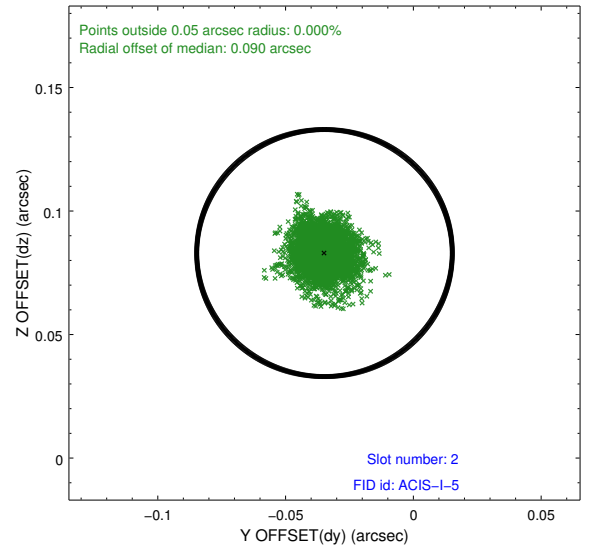
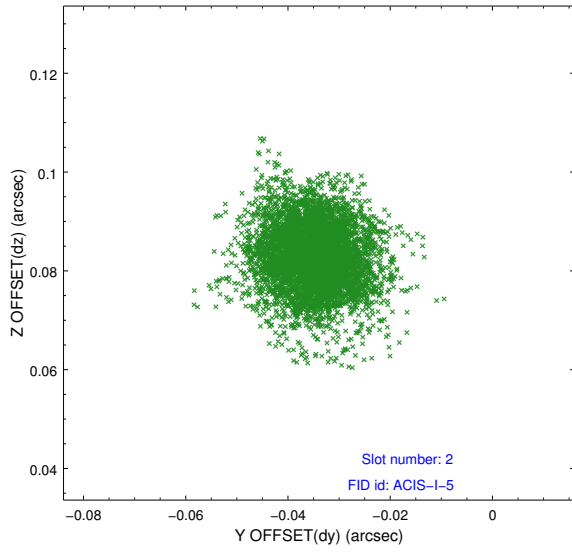
### 2.5.1 Slot 0



## 2.5.2 Slot 1



### 2.5.3 Slot 2



## A Summary

### A.1 Status

V&V Scientist	Jen Lauer
V&V Date (YYYY-MM-DD)	2012.09.14
V&V Edition	1
V&V Disposition and Status	OK
V&V Charge Time	19.958

### A.2 Comments