

V&V Reference Report

L2 ASCDS Version : 8.4.5

Observation 1969 - L2 Version 3
Chandra X-Ray Center

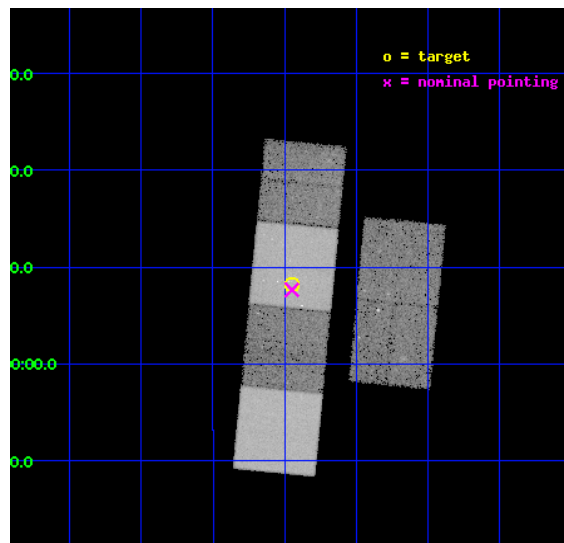
L2 Processing Date : Sep 11 2012

Contents

1	Front	2
2	OBI	3
2.1	OBI	3
2.1.1	Images	3
2.1.2	Bias	3
2.1.3	Parameters	4
2.1.4	Events	4
2.2	Compared Parameters	5
2.3	Aspect	6
2.4	Star Slots	9
2.4.1	Slot 3	9
2.4.2	Slot 4	10
2.4.3	Slot 5	11
2.4.4	Slot 6	12
2.4.5	Slot 7	13
2.5	FID Slots	14
2.5.1	Slot 0	14
2.5.2	Slot 1	15
2.5.3	Slot 2	16
A	Summary	17
A.1	Status	17
A.2	Comments	17

1 Front

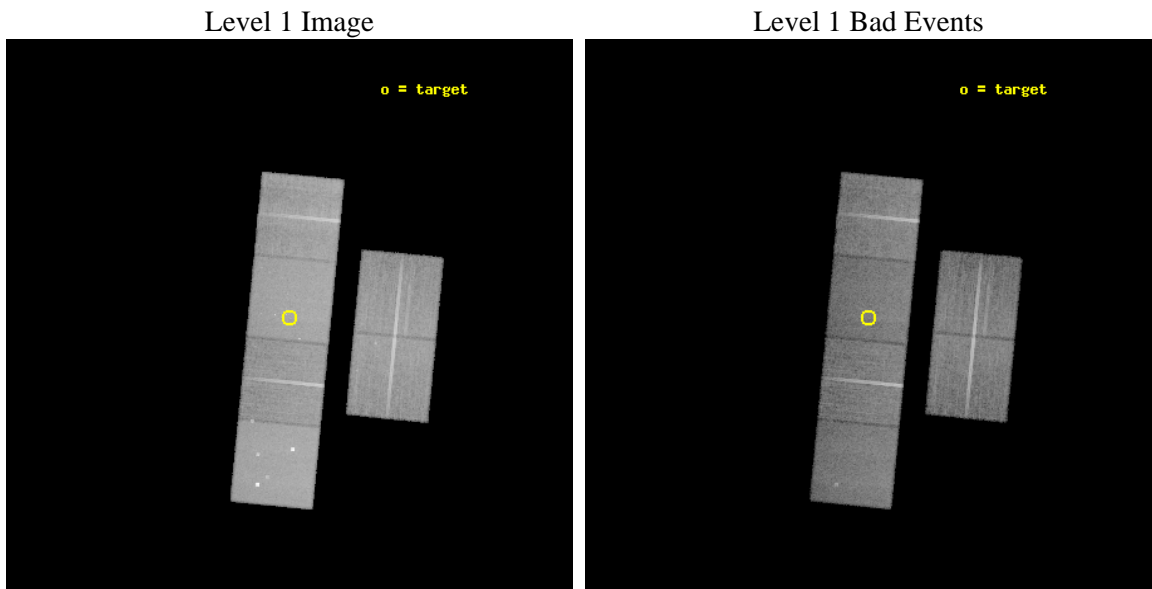
seq_num	500146	Sequence number
obs_id	1969	Observation id
title	CONTINUING CHANDRA OBSERVATIONS OF THE X-RAY SUPERNOVAE SN 1999EM AND SN 1998S	Proposal title
observer	Prof. Walter Lewin	Principal investigator
object	SN 1999EM	Source name
dtcycle	0	
cycle	P	events from which exps? Prim/Second/Both
ra_targ	70.362917	Observer's specified target RA [deg]
dec_targ	-2.862694	Observer's specified target Dec [deg]
ra_nom	70.362099540761	Nominal RA [deg]
dec_nom	-2.8724776568251	Nominal Dec [deg]
roll_nom	275.5608252135	Nominal Roll [deg]
revision	3	Processing version of data
ontime	27072.000025198	Sum of GTIs [s]
livetime	26729.198060077	Livetime [s]
ontime2	27055.79519403	Sum of GTIs [s]
ontime3	27068.759064943	Sum of GTIs [s]
ontime5	27072.000025198	Sum of GTIs [s]
ontime6	27065.51812461	Sum of GTIs [s]
ontime7	27072.000025198	Sum of GTIs [s]
ontime8	27065.51812461	Sum of GTIs [s]
l2events	283398	Number of level 2 events



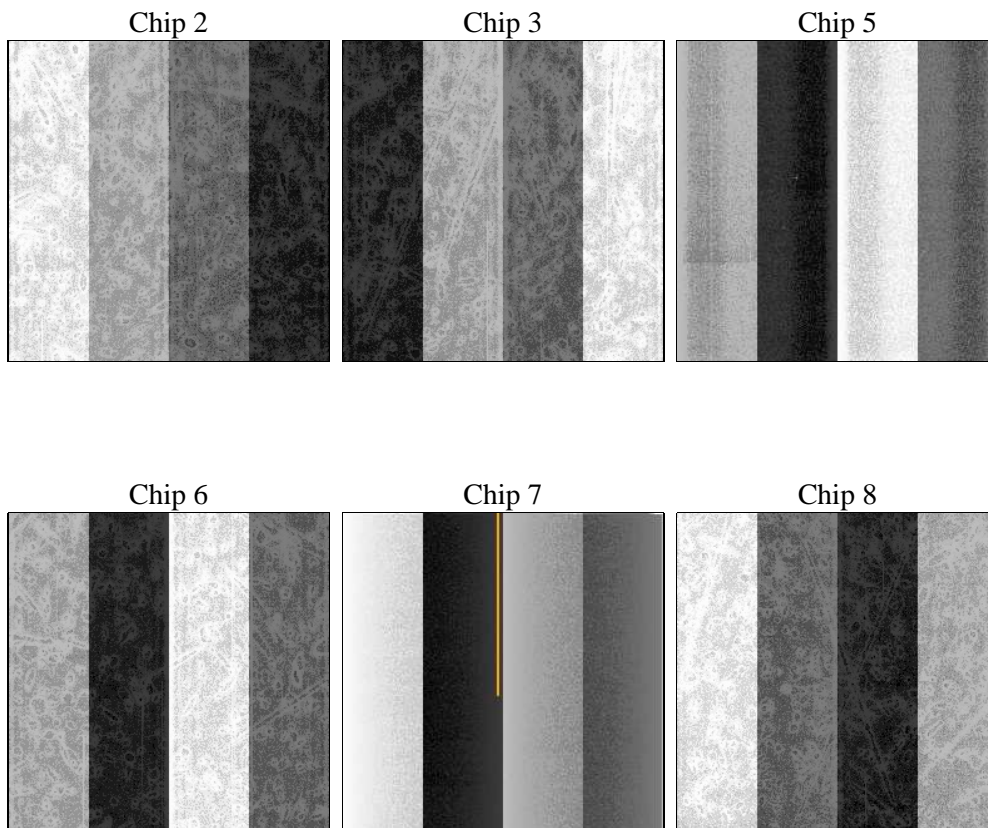
2 OBI

2.1 OBI

2.1.1 Images



2.1.2 Bias



2.1.3 Parameters

obi_num	0	Obi number	sched_exp_time	27000.000000	[s] Scheduled observation exposure time
ascdsver	8.4.5	Processing system revision	ontime	27072.000025198	Sum of GTIs [s]
caldbver	4.5.1.1	 	ontime2	27055.79519403	Sum of GTIs [s]
date	2012-09-11T23:54:31	Date and time of file creation	ontime3	27068.759064943	Sum of GTIs [s]
revision	3	Processing version of data	ontime5	27072.000025198	Sum of GTIs [s]
			ontime6	27065.51812461	Sum of GTIs [s]
			ontime7	27072.000025198	Sum of GTIs [s]
			ontime8	27065.51812461	Sum of GTIs [s]
			l1events	1245909	Number of level 1 events

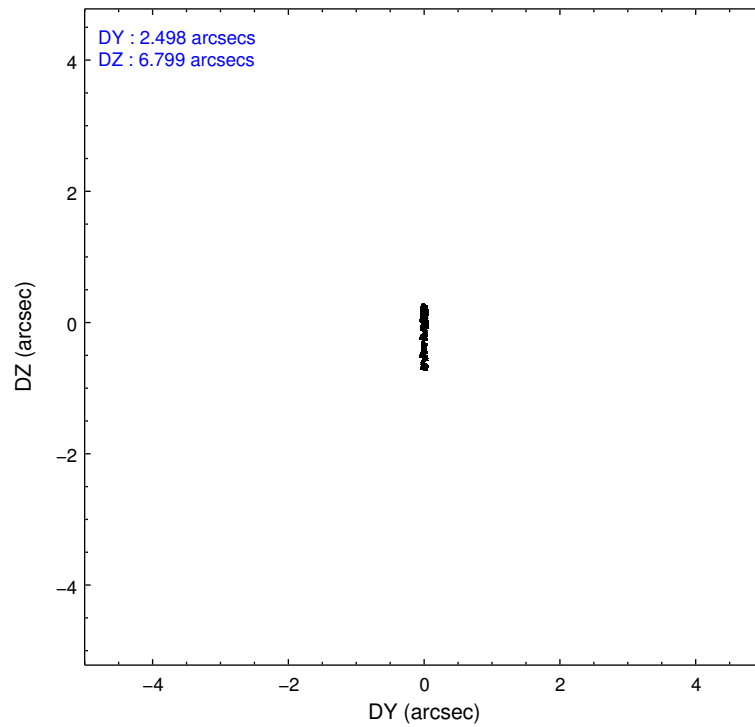
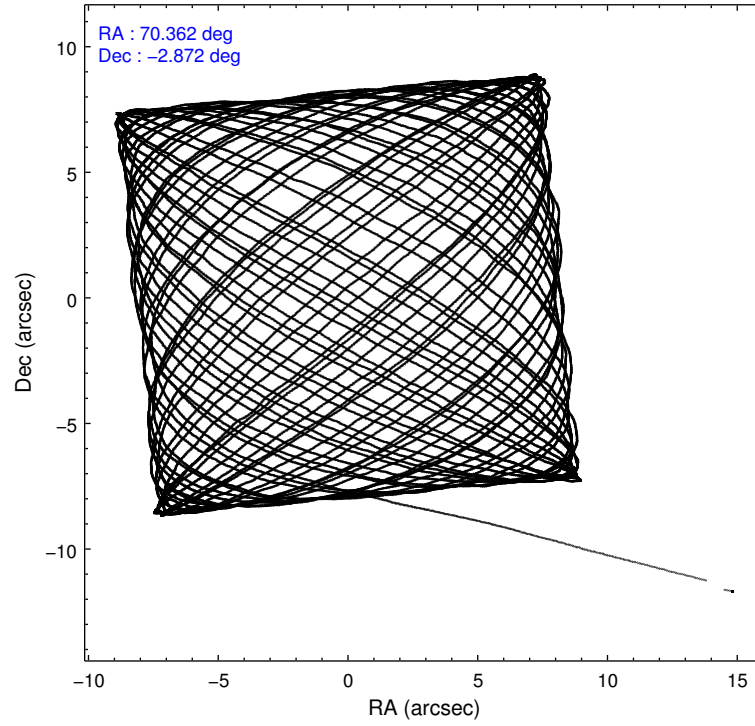
2.1.4 Events

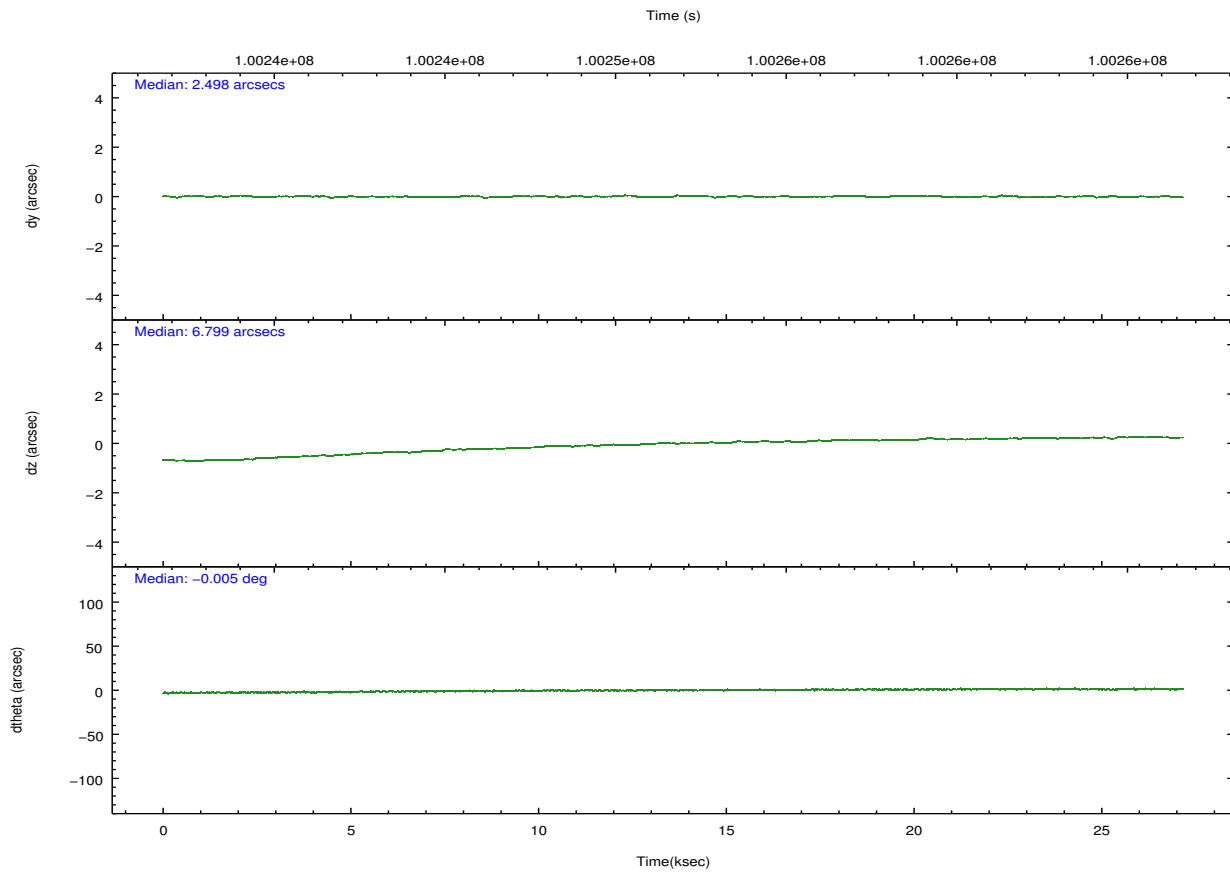
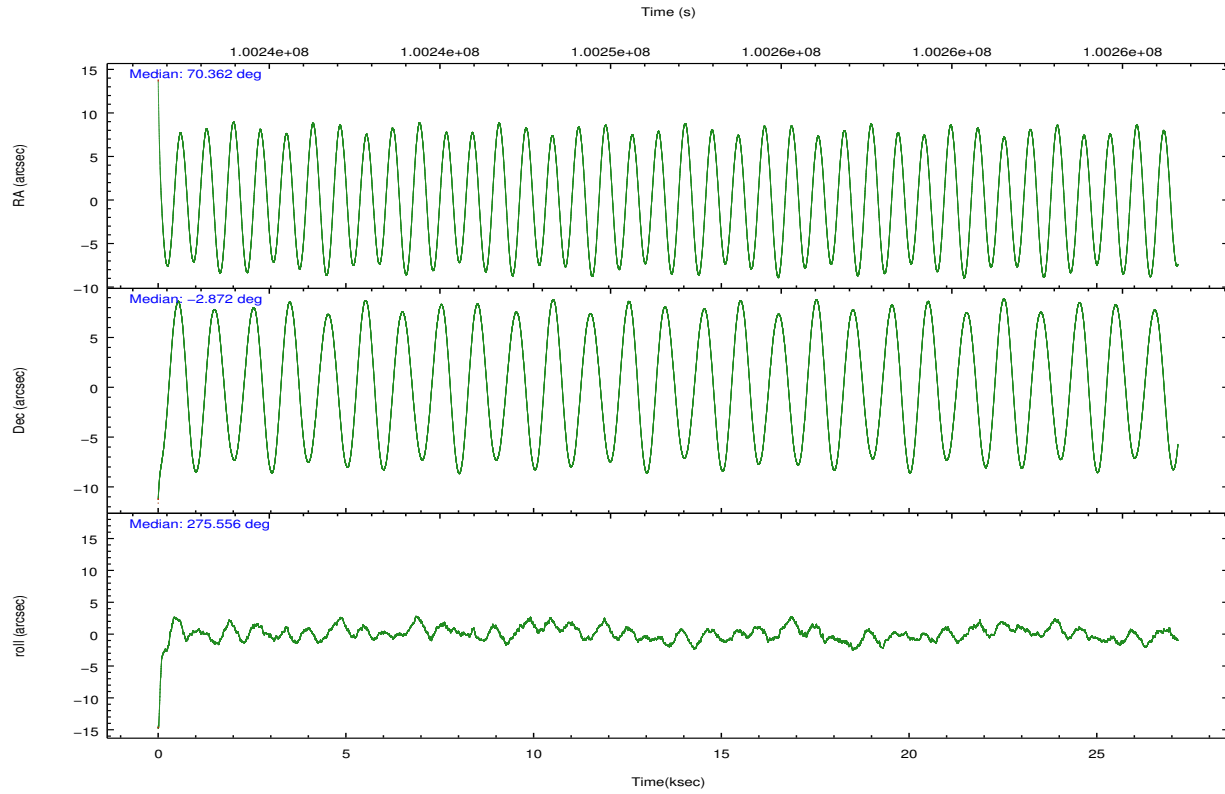
	ccd 2	ccd 3	ccd 5	ccd 6	ccd 7	ccd 8		ccd 2	ccd 3	ccd 5	ccd 6	ccd 7	ccd 8
level 1 events	181612	174021	263786	174295	233032	219163	grade 0 events	8577	8112	20642	8216	10589	13715
rejected events	161566	154775	132849	154290	130779	176184		4%	4%	7%	4%	4%	6%
rejected %	88%	88%	50%	88%	56%	80%	grade 1 events	79	83	548	82	216	126
								0%	0%	0%	0%	0%	0%
							grade 2 events	4288	3756	38540	3973	19715	9222
								2%	2%	14%	2%	8%	4%
							grade 3 events	1907	1922	5717	1931	9311	4644
								1%	1%	2%	1%	3%	2%
							grade 4 events	1812	1825	5330	1920	9287	4323
								0%	1%	2%	1%	3%	1%
							grade 5 events	6169	6863	18459	7302	21756	9228
								3%	3%	6%	4%	9%	4%
							grade 6 events	3471	3638	60743	3970	53375	11088
								1%	2%	23%	2%	22%	5%
							grade 7 events	155309	147822	113807	146901	108783	166817
								85%	84%	43%	84%	46%	76%

2.2 Compared Parameters

Parameter	Planned	Actual	Parameter	Planned	Actual
Instrument	ACIS	ACIS	Obspar format version number	7	7
Detector	ACIS-235678	ACIS-235678	Obspar file type	PREDICTED	ACTUAL
Grating	NONE	NONE	Obspar update status	NONE	UPDATED
Data mode	FAINT	FAINT	Number of optional ACIS chips dropped	0	0
Observation mode	POINTING	POINTING	On-chip summing requested	N	N
[deg] Pointing RA	70.345999	70.36209954076114	Subarray requested	NONE	NONE
[deg] Pointing Dec	-2.850395	-2.872477656825126	Alternating exposures requested	N	N
[deg] Pointing Roll	275.403398	275.5608252134993	[s] Primary exposure time	0.000000	3.2
[mm] SIM focus pos	-0.684267	-0.6828225247311905			
[mm] SIM defocus	0	0.001444936568705701			
[mm] SIM translation stage pos	-190.132523	-190.1400660498719			
[mm] SIM translation stage offset	0	0.00754346686406393			
[s] Observation start time (MET)	100238265.184000	100237219.12711			
Observation start date	2001-03-06T03:56:41	2001-03-06T03:40:19			
[s] Observation end time (MET)	100265265.184000	100266116.44073			
Observation end date	2001-03-06T11:26:41	2001-03-06T11:41:56			
Read mode	TIMED	TIMED			

2.3 Aspect



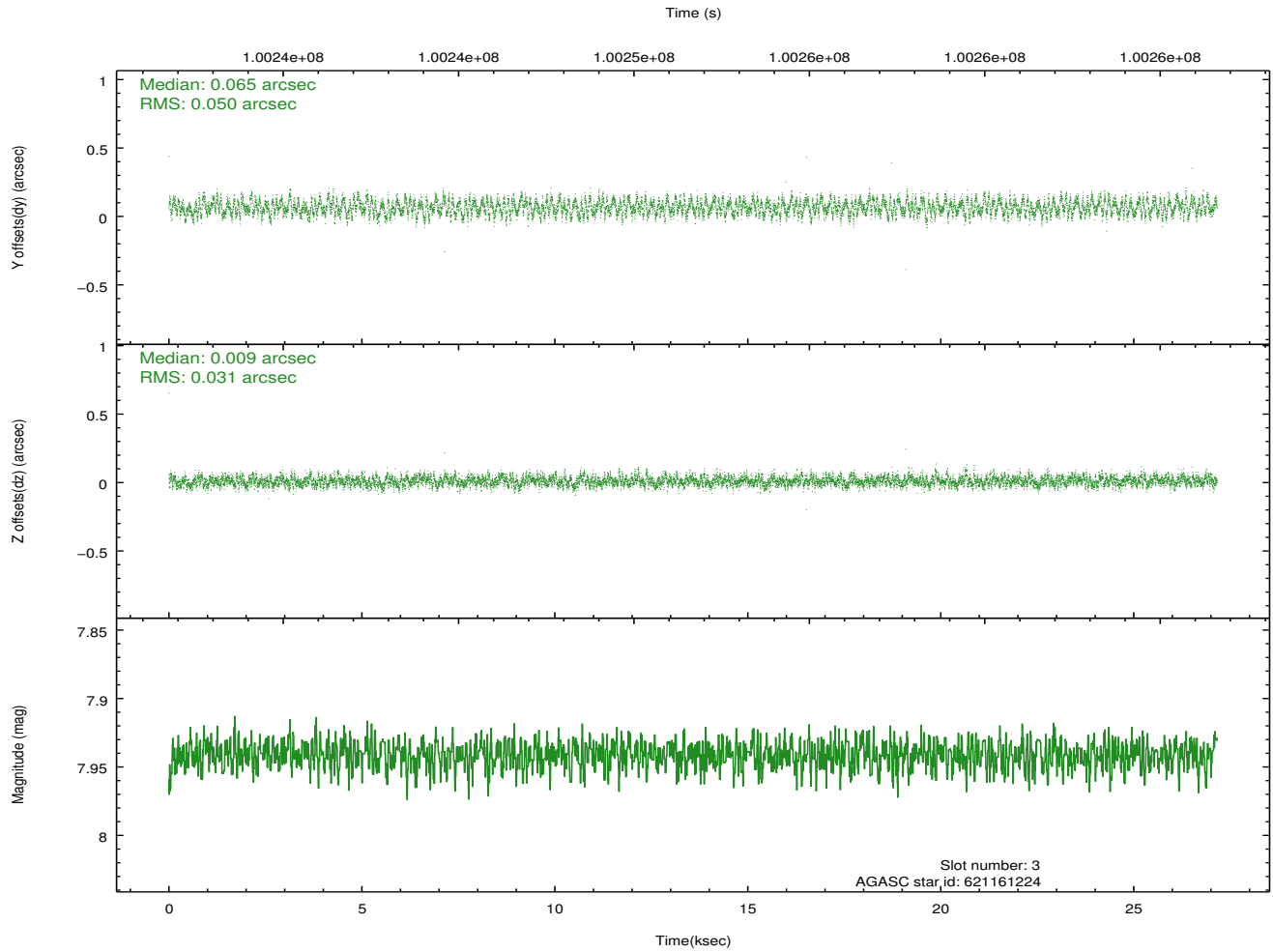
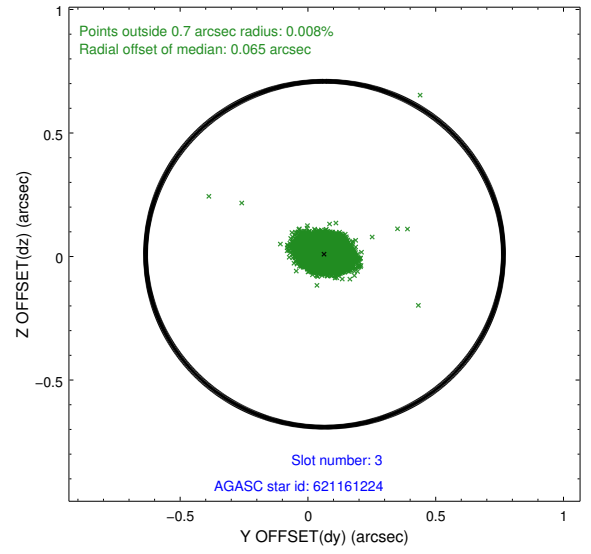
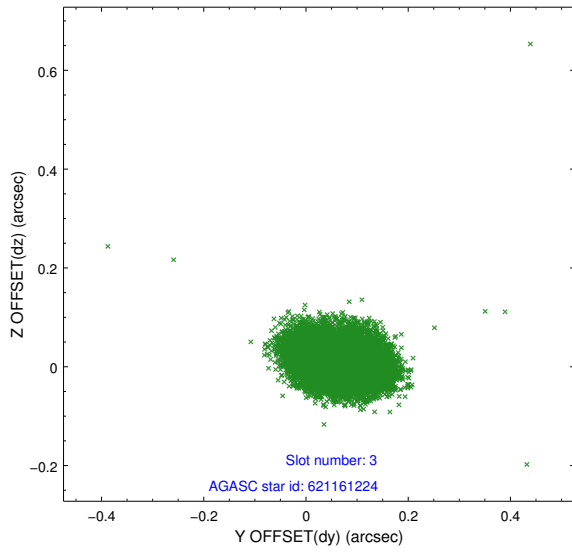


Slot Statistics

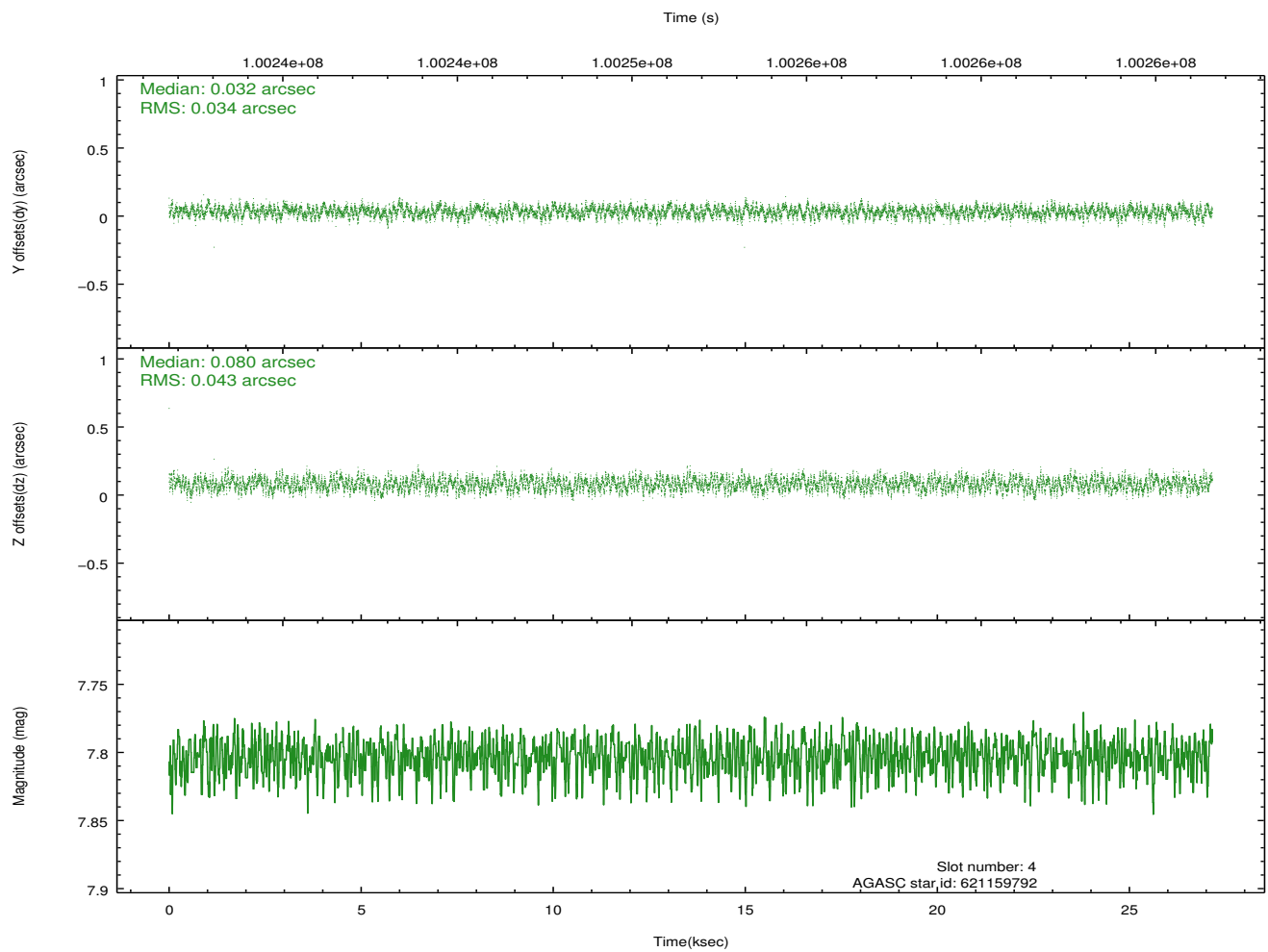
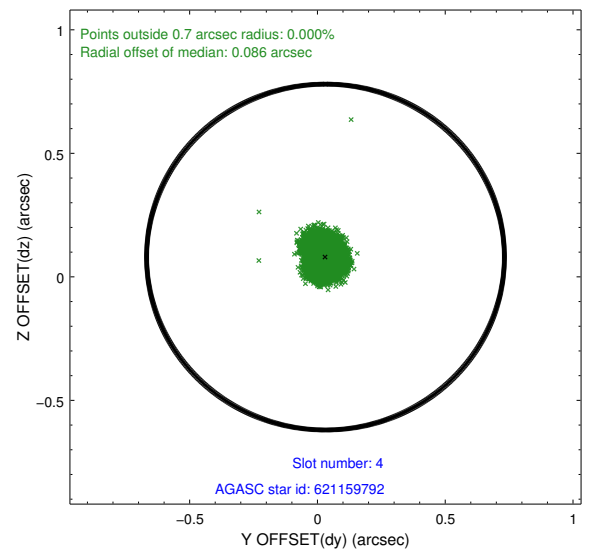
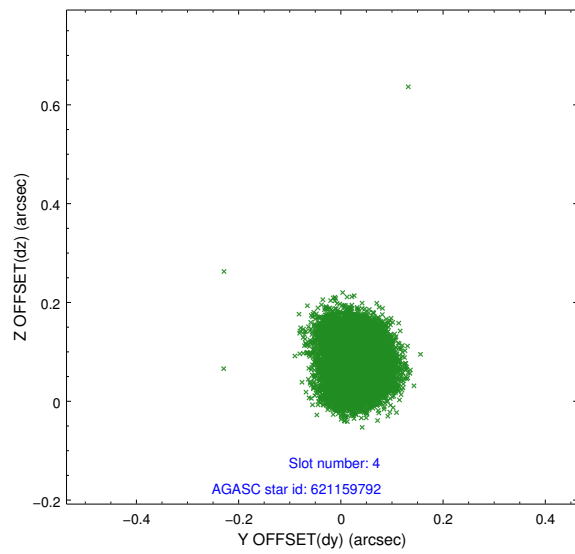
slot	status	id	mag	n_pts	med_dy	med_dz	dr1	dr2	ra	dec	mean_y	mean_z
0	FID	ACIS-S-2	7.11	6624	-0.023	-0.002	0.010	0.016	0.000000	0.000000	-755.13	-1727.87
1	FID	ACIS-S-4	7.20	6621	-0.034	0.012	0.008	0.015	0.000000	0.000000	2158.07	180.56
2	FID	ACIS-S-5	7.23	6620	0.026	-0.001	0.009	0.014	0.000000	0.000000	-1807.82	174.29
3	GUIDE	621161224	7.94	13241	0.065	0.009	0.062	0.099	70.234546	-3.517454	2353.72	-624.60
4	GUIDE	621159792	7.80	13248	0.032	0.080	0.059	0.091	71.027177	-3.166580	1365.15	2330.61
5	GUIDE	621154624	8.98	13242	-0.147	0.012	0.062	0.105	70.402746	-2.451192	-1411.04	338.67
6	GUIDE	621154496	8.63	13245	-0.103	0.155	0.068	0.108	70.732100	-2.663664	-538.03	1445.81
7	GUIDE	621159736	9.43	13235	0.152	-0.257	0.082	0.135	69.932347	-3.381643	1765.13	-1660.07

2.4 Star Slots

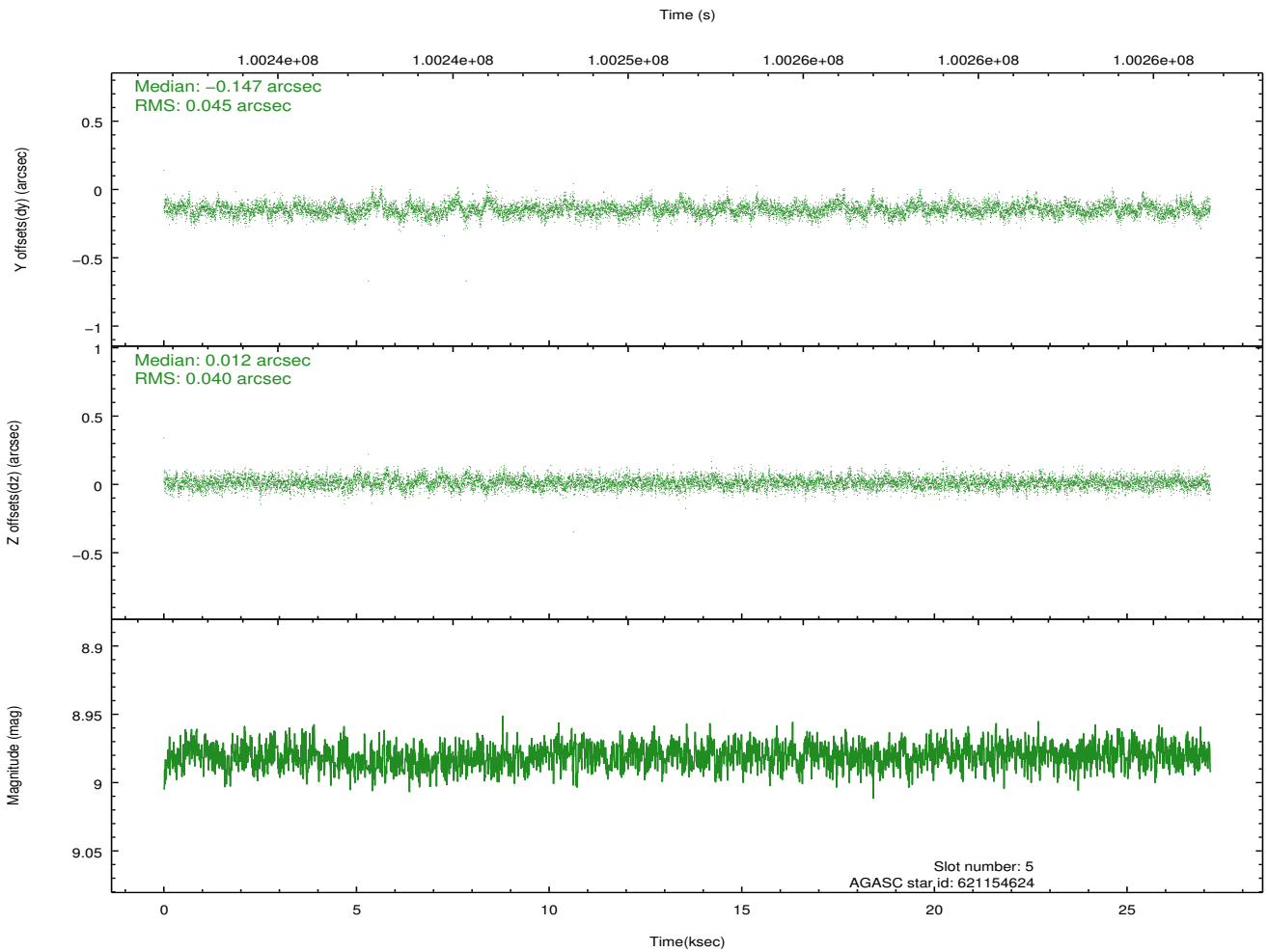
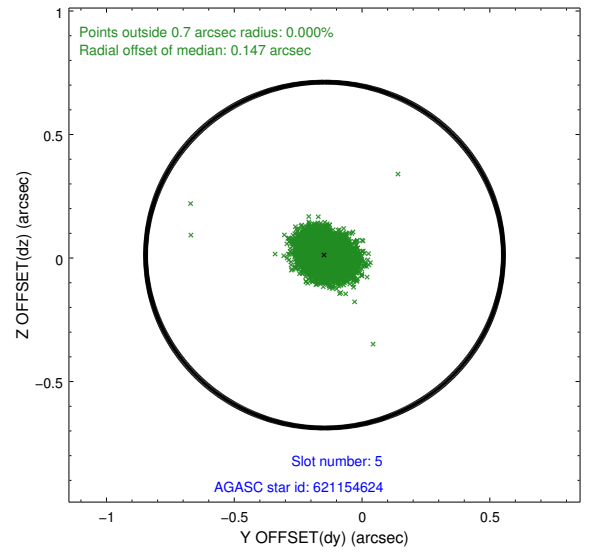
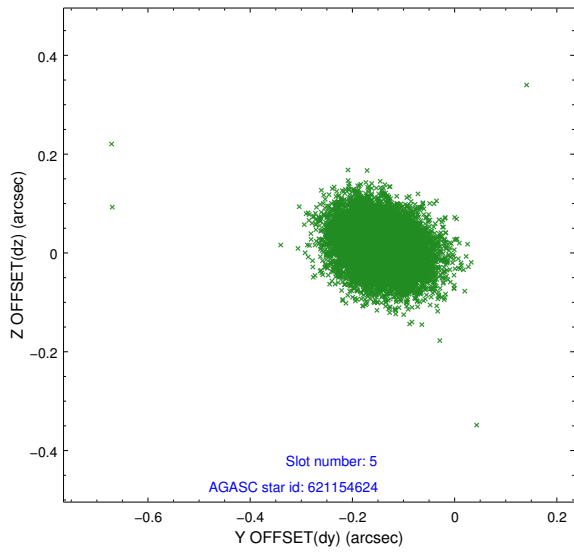
2.4.1 Slot 3



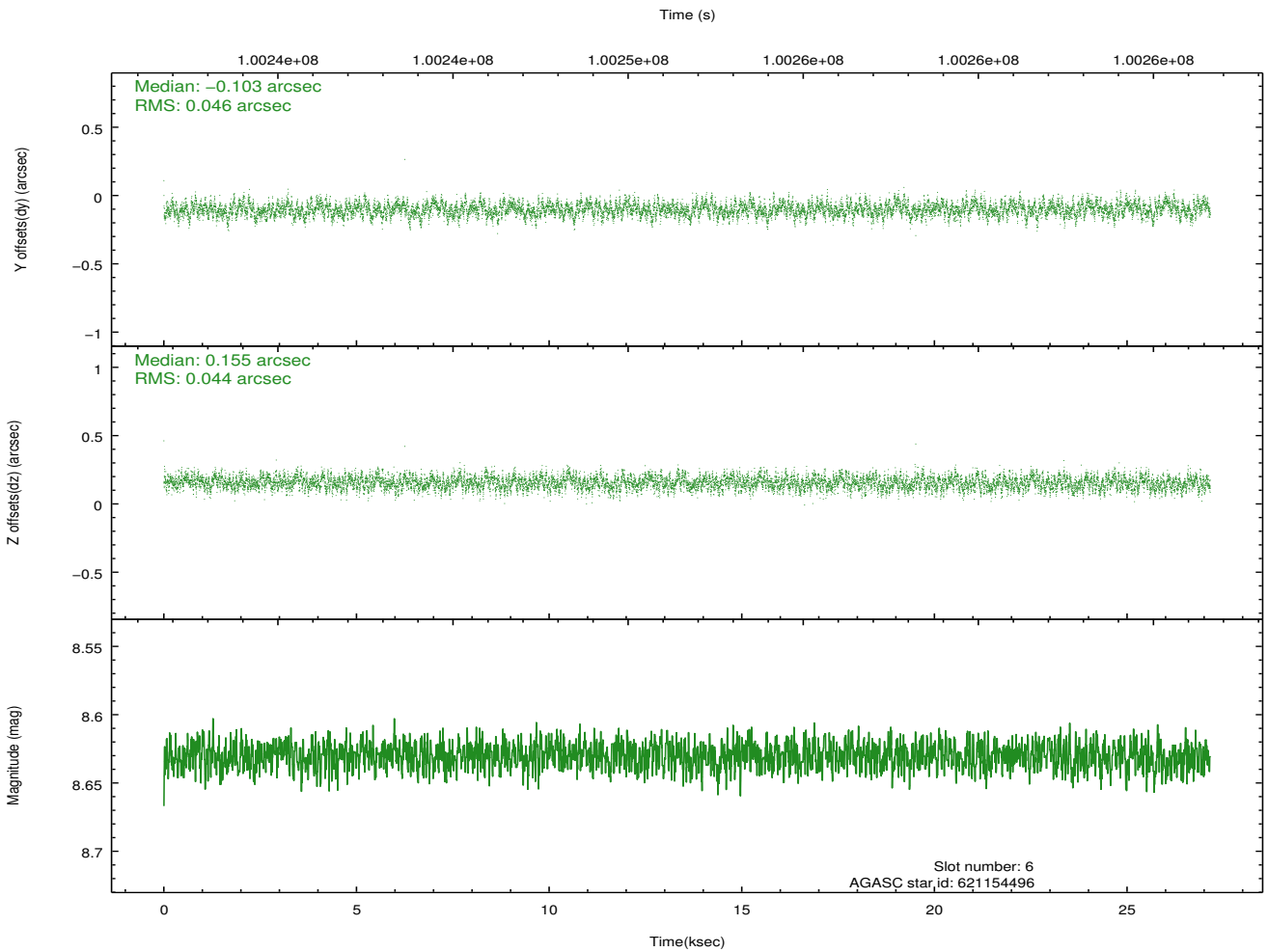
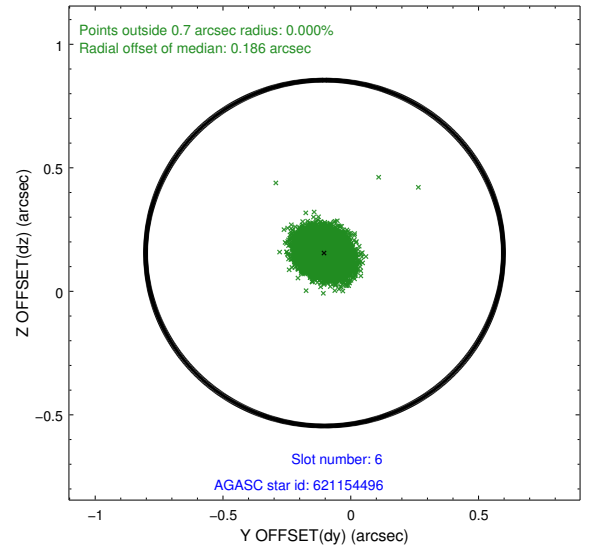
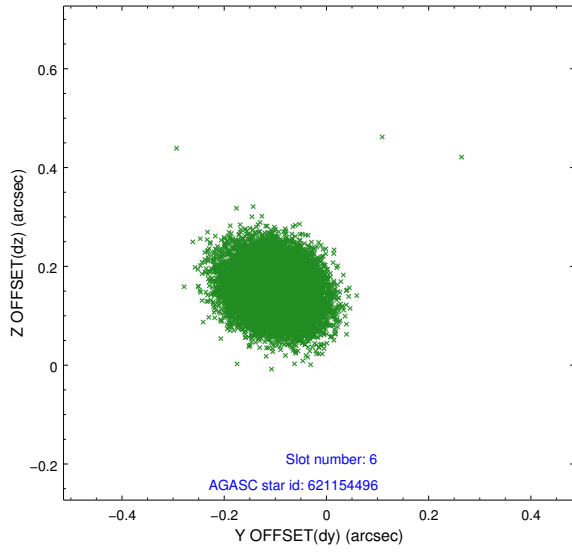
2.4.2 Slot 4



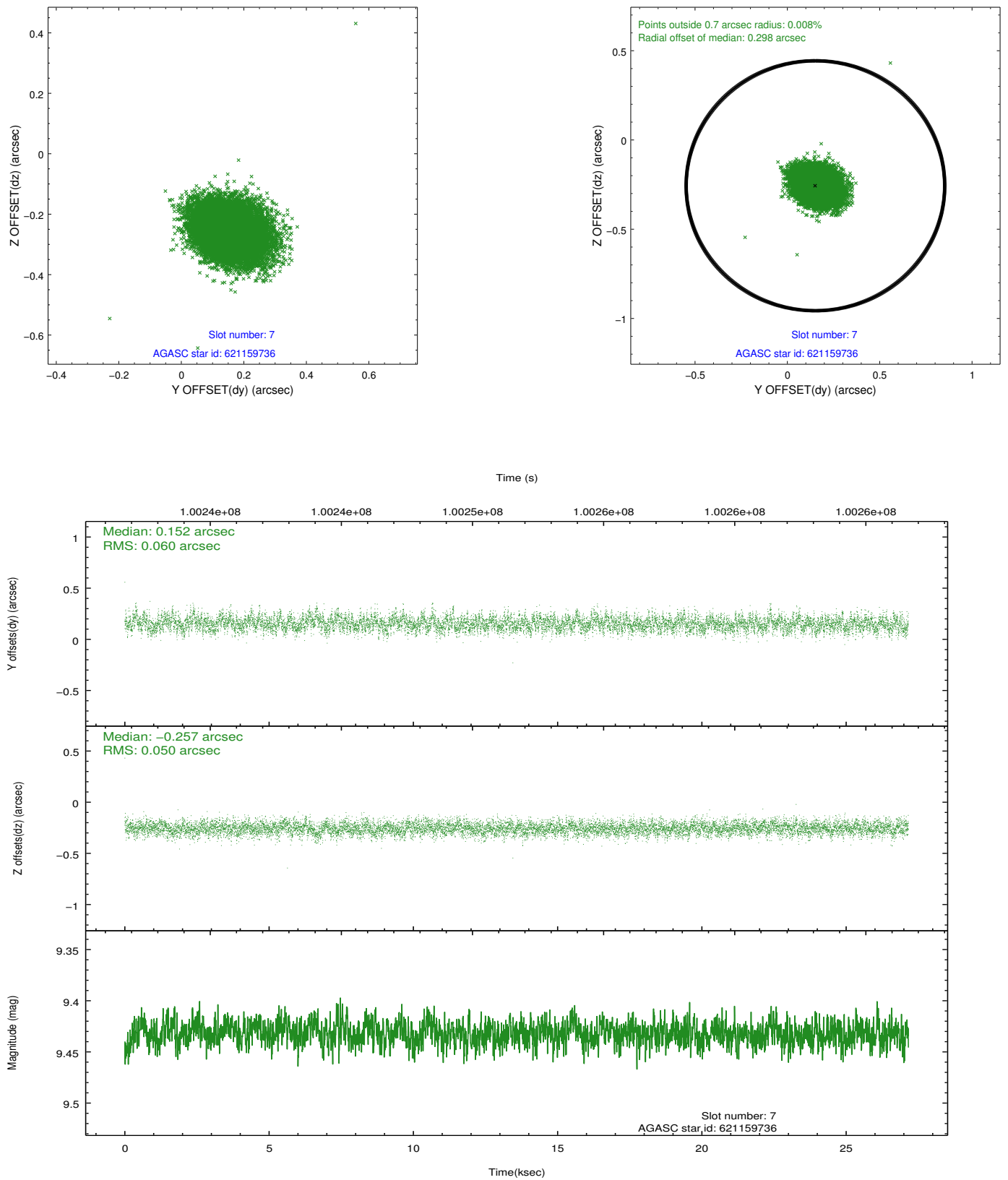
2.4.3 Slot 5



2.4.4 Slot 6

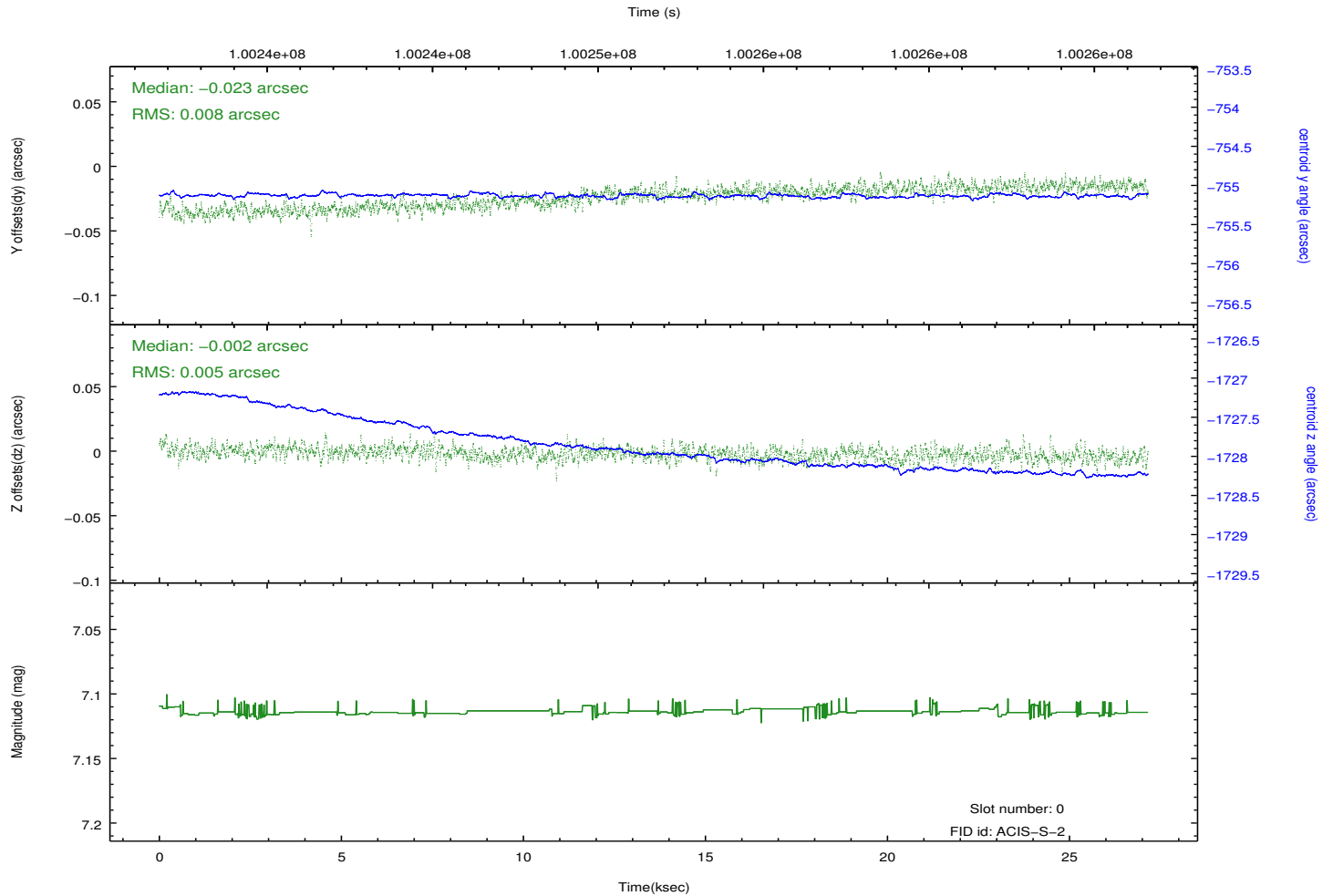
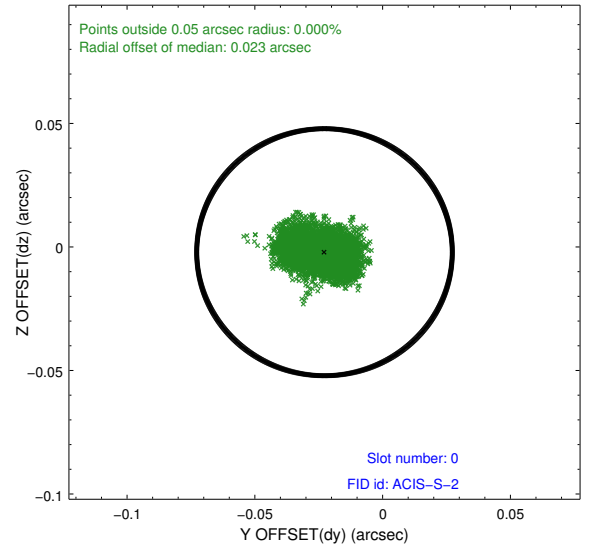
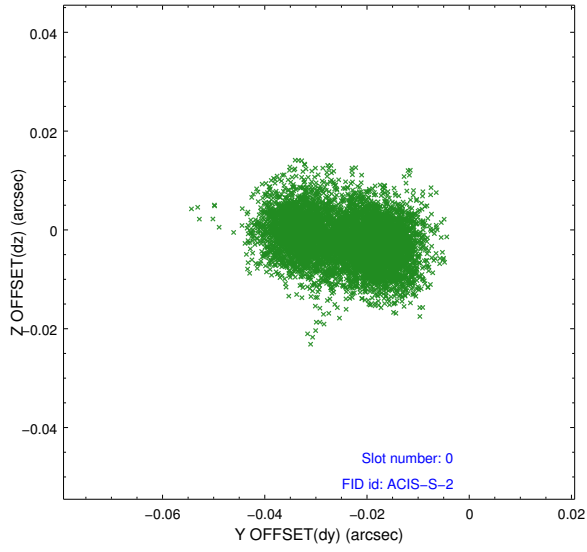


2.4.5 Slot 7

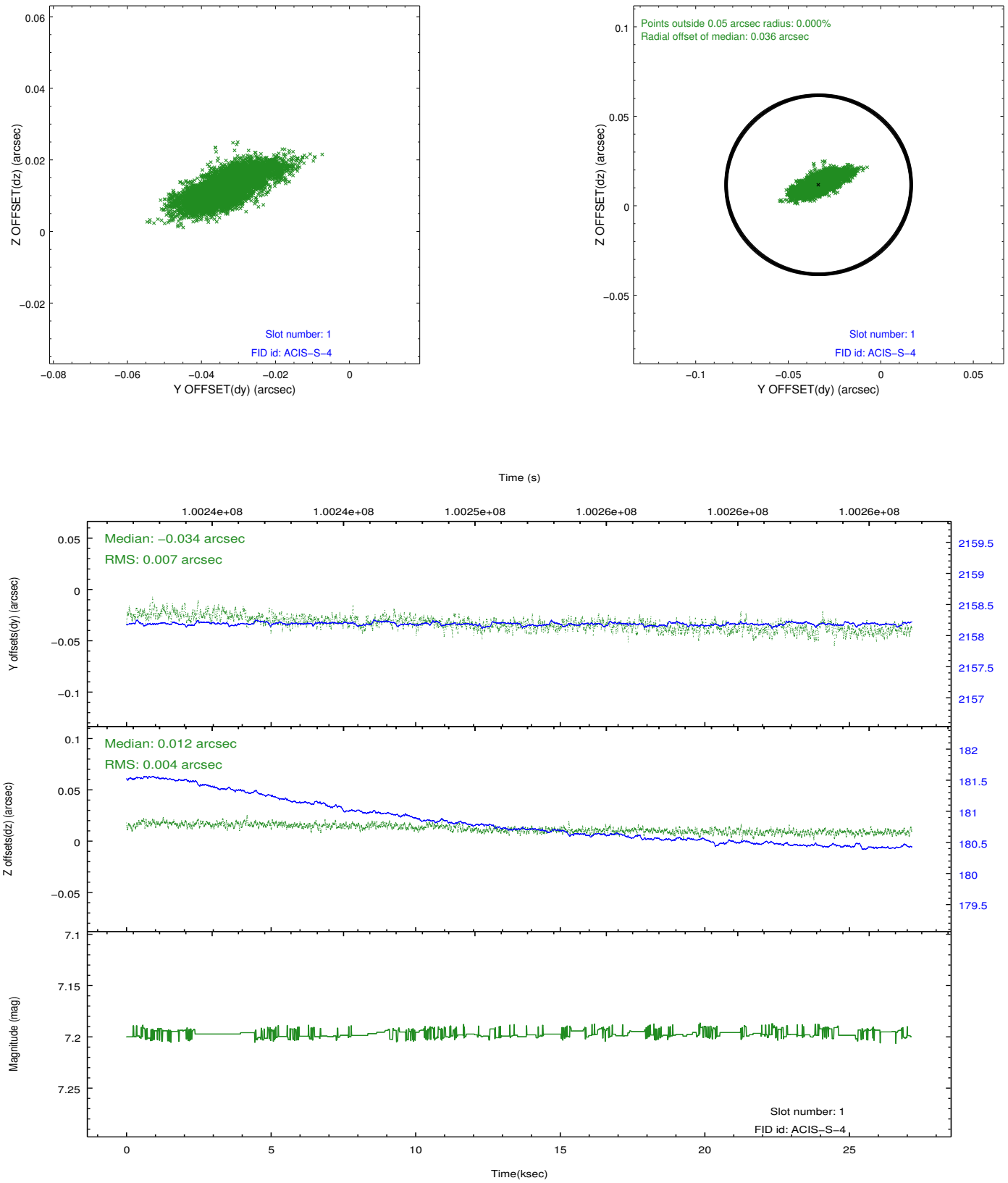


2.5 FID Slots

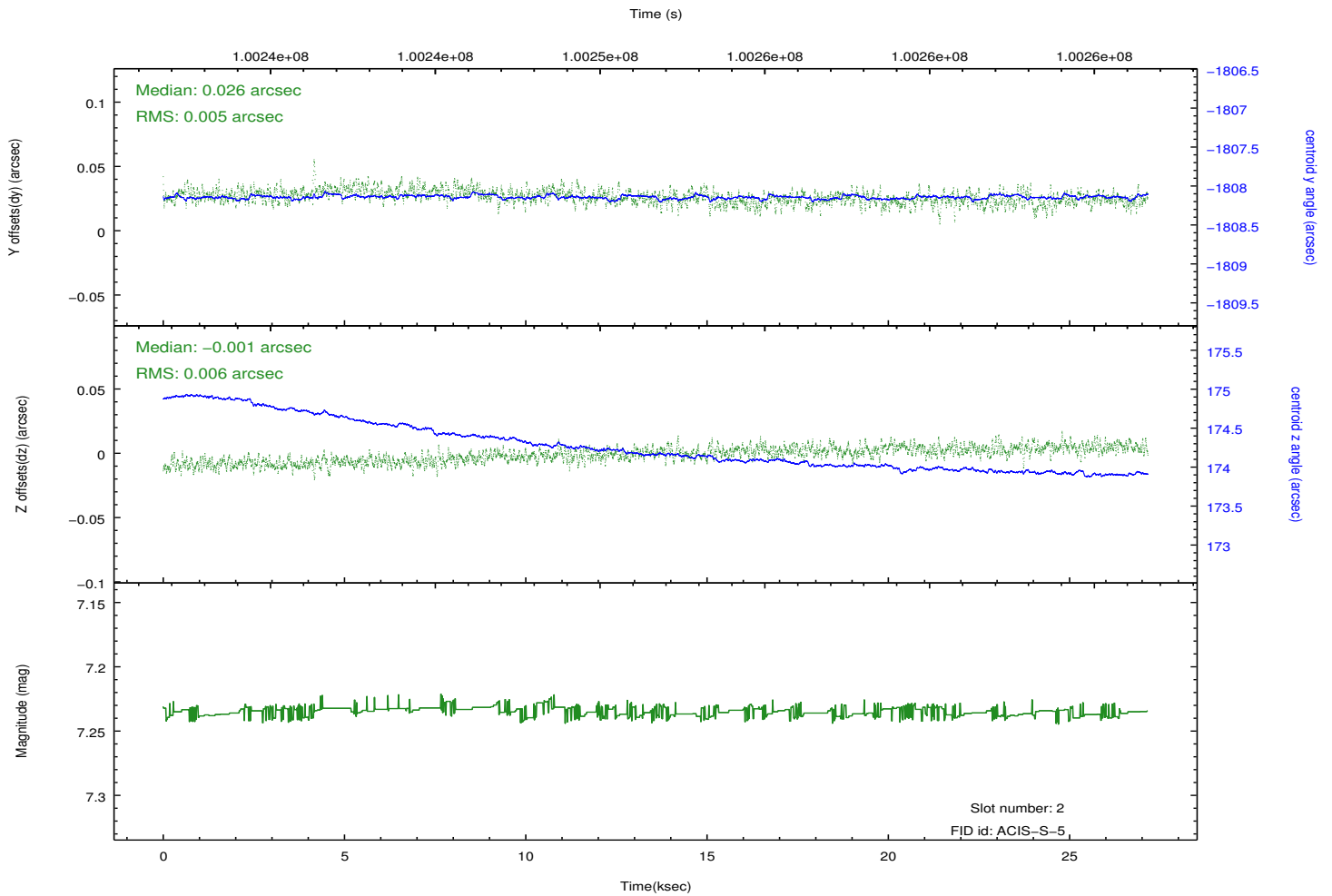
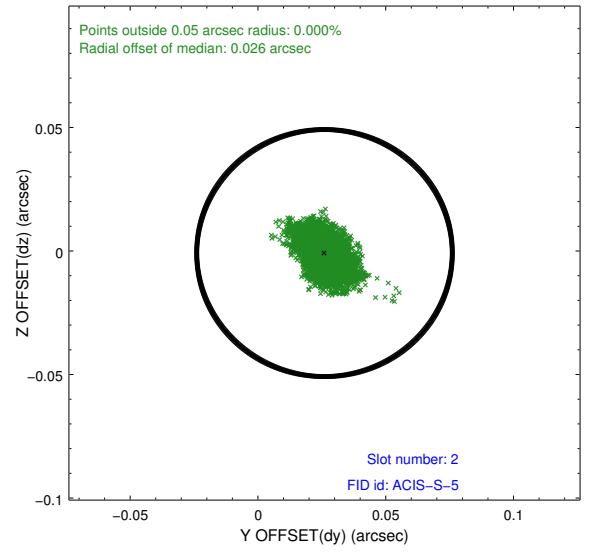
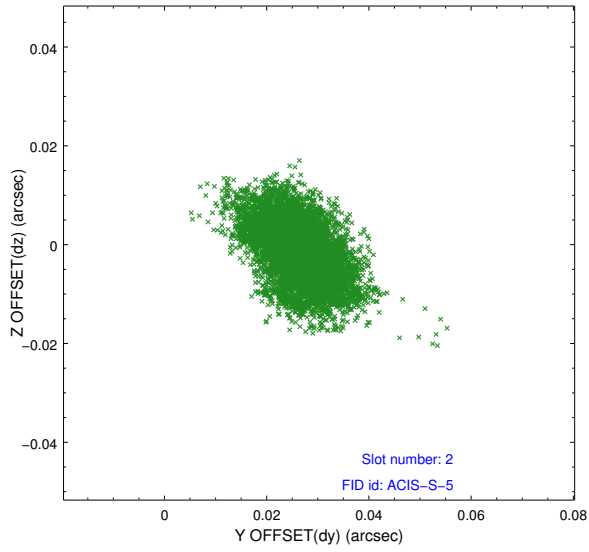
2.5.1 Slot 0



2.5.2 Slot 1



2.5.3 Slot 2



A Summary

A.1 Status

V&V Scientist	Beth Sundheim
V&V Date (YYYY-MM-DD)	2012.09.18
V&V Edition	1
V&V Disposition and Status	OK
V&V Charge Time	27.075

A.2 Comments