

V&V Reference Report

L2 ASCDS Version : 8.4.5

Observation 2059 - L2 Version 3
Chandra X-Ray Center

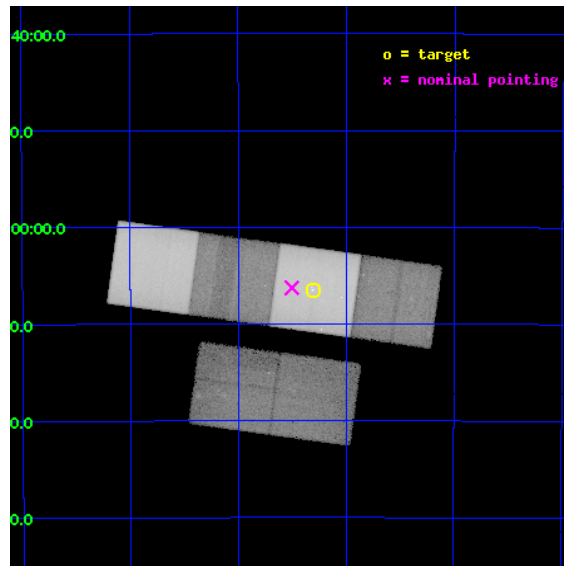
L2 Processing Date : Sep 3 2012

Contents

1	Front	2
2	OBI	3
2.1	OBI	3
2.1.1	Images	3
2.1.2	Bias	3
2.1.3	Parameters	4
2.1.4	Events	4
2.2	Compared Parameters	5
2.3	Aspect	6
2.4	Star Slots	9
2.4.1	Slot 3	9
2.4.2	Slot 4	10
2.4.3	Slot 5	11
2.4.4	Slot 6	12
2.4.5	Slot 7	13
2.5	FID Slots	14
2.5.1	Slot 0	14
2.5.2	Slot 1	15
2.5.3	Slot 2	16
A	Summary	17
A.1	Status	17
A.2	Comments	17

1 Front

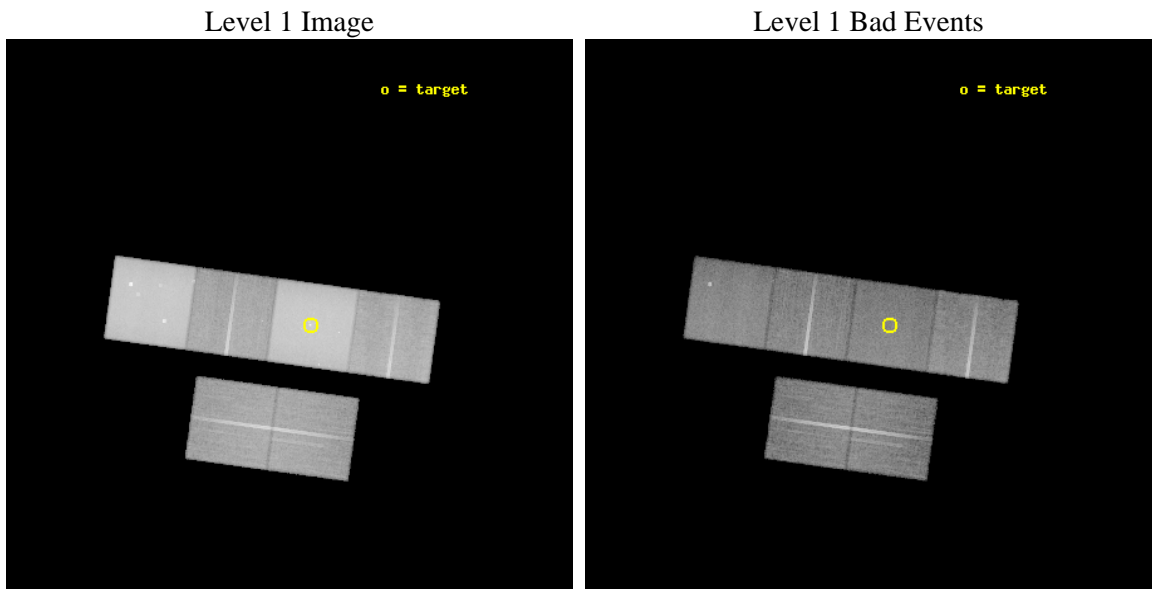
seq_num	600193	Sequence number
obs_id	2059	Observation id
title	THE X-RAY POINT SOURCE POPULATION IN SPIRAL GALAXIES	Proposal titl
observer	Dr Andrea Prestwich	Principal investigator
object	NGC 1291	Source name
dtycycle	0	
cycle	P	events from which exps? Prim/Second/Both
ra_targ	49.32625	Observer's specified target RA [deg]
dec_targ	-41.107778	Observer's specified target Dec [deg]
ra_nom	49.375922452162	Nominal RA [deg]
dec_nom	-41.104515481902	Nominal Dec [deg]
roll_nom	7.8341555753935	Nominal Roll [deg]
revision	3	Processing version of data
ontime	36998.400034443	Sum of GTIs [s]
livetime	36529.904015445	Livetime [s]
ontime2	36991.918054149	Sum of GTIs [s]
ontime3	36998.400034443	Sum of GTIs [s]
ontime5	36998.400034443	Sum of GTIs [s]
ontime6	36991.918054134	Sum of GTIs [s]
ontime7	36998.400034443	Sum of GTIs [s]
ontime8	36995.159064204	Sum of GTIs [s]
l2events	1139515	Number of level 2 events



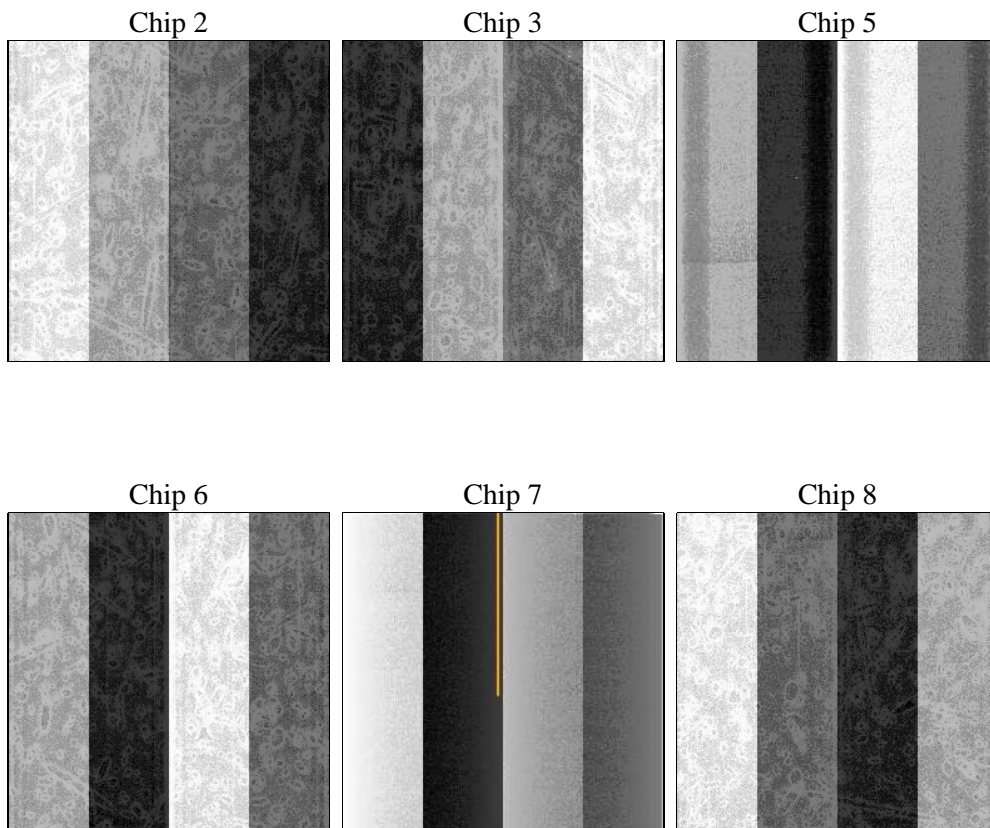
2 OBI

2.1 OBI

2.1.1 Images



2.1.2 Bias



2.1.3 Parameters

obi_num	0	Obi number	sched_exp_time	37247.658000	[s] Scheduled observation exposure time
ascdsver	8.4.5	Processing system revision	ontime	36998.400034443	Sum of GTIs [s]
caldbver	4.5.1.1	 	ontime2	36991.918054149	Sum of GTIs [s]
date	2012-09-03T04:20:10	Date and time of file creation	ontime3	36998.400034443	Sum of GTIs [s]
revision	3	Processing version of data	ontime5	36998.400034443	Sum of GTIs [s]
			ontime6	36991.918054134	Sum of GTIs [s]
			ontime7	36998.400034443	Sum of GTIs [s]
			ontime8	36995.159064204	Sum of GTIs [s]
			l1events	2311796	Number of level 1 events

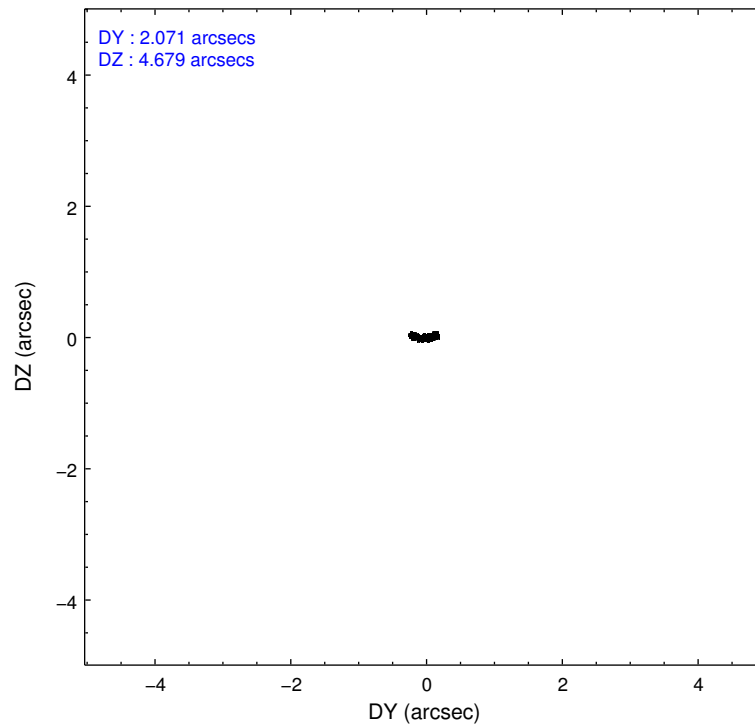
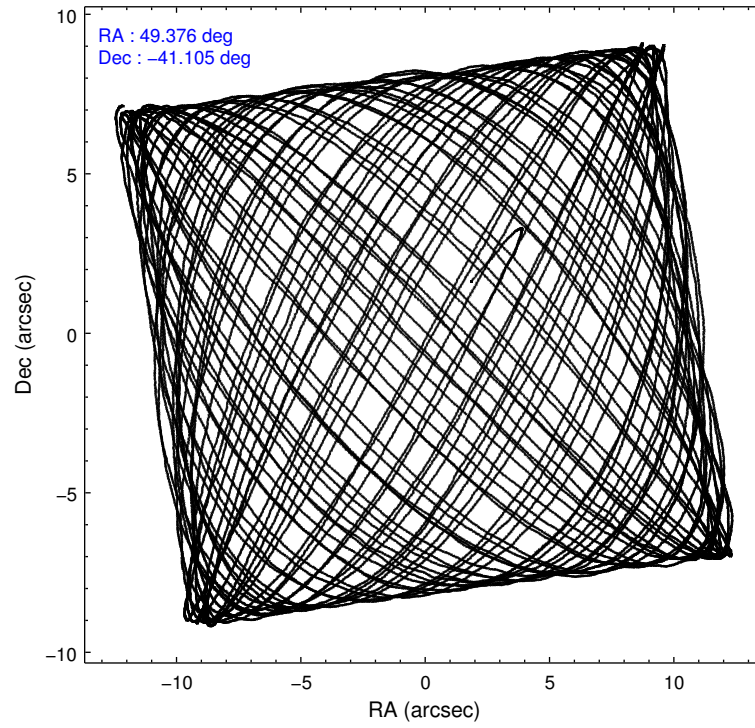
2.1.4 Events

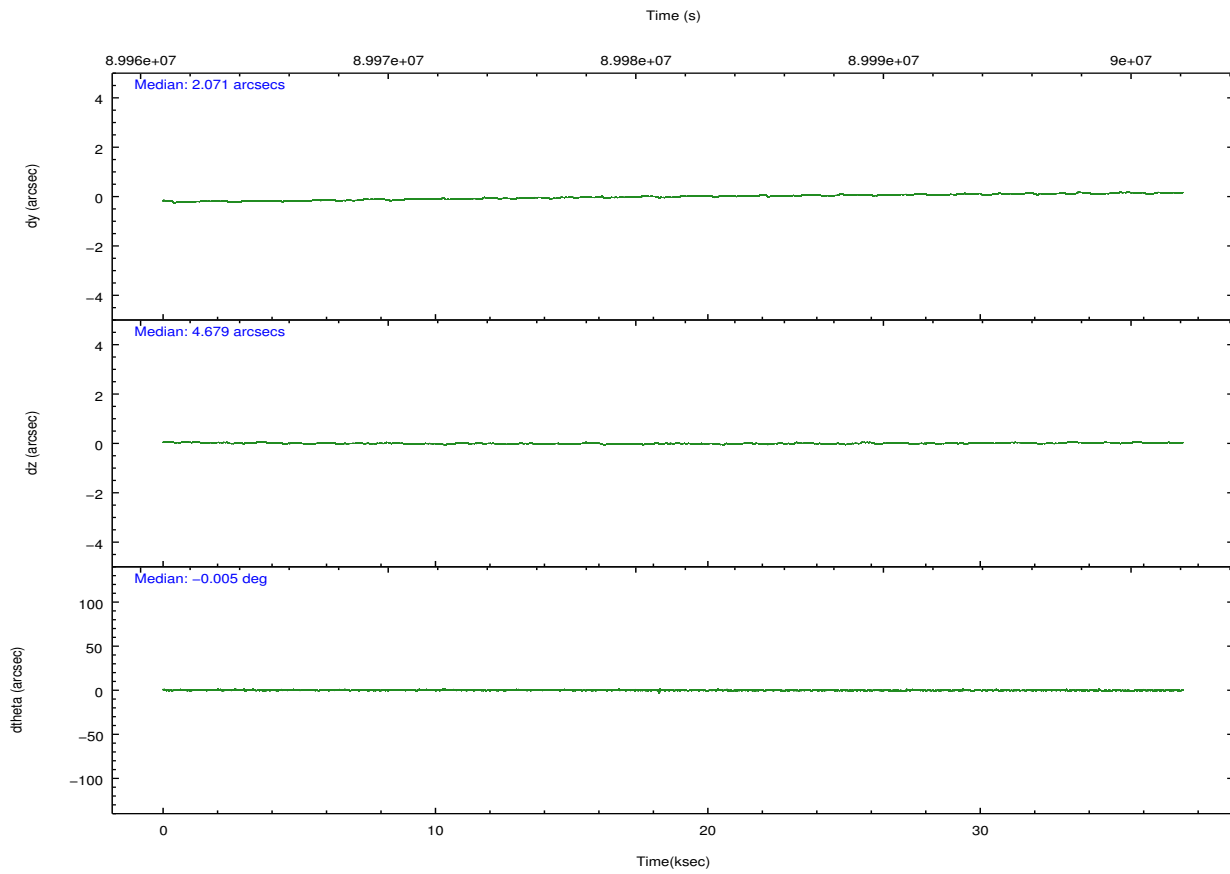
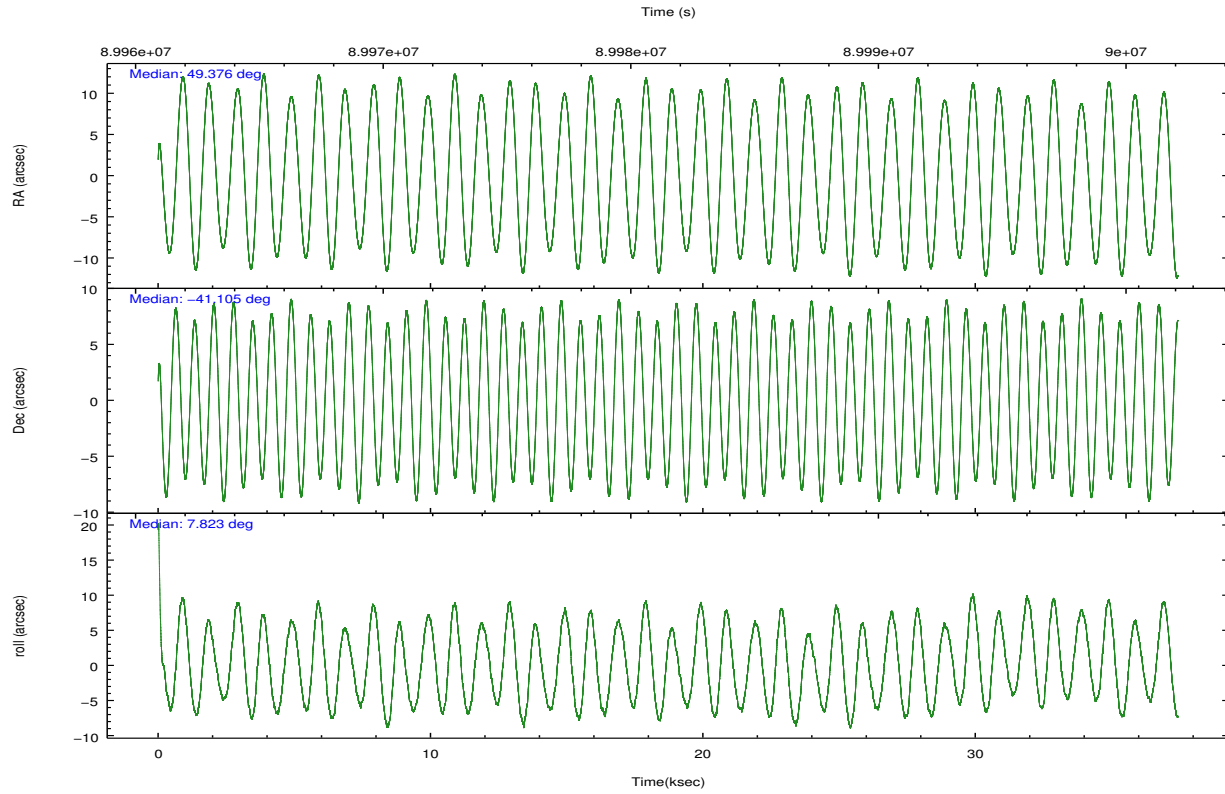
	ccd 2	ccd 3	ccd 5	ccd 6	ccd 7	ccd 8		ccd 2	ccd 3	ccd 5	ccd 6	ccd 7	ccd 8
level 1 events	232898	224164	648271	253646	649291	303526	grade 0 events	26711	26285	77702	45765	58274	49718
rejected events	187753	179442	183697	185096	159314	211528		11%	11%	11%	18%	8%	16%
rejected %	80%	80%	28%	72%	24%	69%	grade 1 events	142	129	1063	204	262	227
								0%	0%	0%	0%	0%	0%
							grade 2 events	8823	8911	128025	11539	87547	17282
								3%	3%	19%	4%	13%	5%
							grade 3 events	2449	2582	28414	2798	38765	5879
								1%	1%	4%	1%	5%	1%
							grade 4 events	2399	2494	28071	2950	38518	5487
								1%	1%	4%	1%	5%	1%
							grade 5 events	6830	7534	26435	8451	26508	10700
								2%	3%	4%	3%	4%	3%
							grade 6 events	4768	4461	202491	5503	267031	13646
								2%	1%	31%	2%	41%	4%
							grade 7 events	180776	171768	156070	176436	132386	200587
								77%	76%	24%	69%	20%	66%

2.2 Compared Parameters

Parameter	Planned	Actual	Parameter	Planned	Actual
Instrument	ACIS	ACIS	Obspar format version number	7	7
Detector	ACIS-235678	ACIS-235678	Obspar file type	PREDICTED	ACTUAL
Grating	NONE	NONE	Obspar update status	NONE	UPDATED
Data mode	FAINT	FAINT	Number of optional ACIS chips dropped	0	0
Observation mode	POINTING	POINTING	On-chip summing requested	N	N
[deg] Pointing RA	49.347443	49.37592245216221	Subarray requested	NONE	NONE
[deg] Pointing Dec	-41.121436	-41.10451548190155	Alternating exposures requested	N	N
[deg] Pointing Roll	7.658793	7.834155575393453	[s] Primary exposure time	0.000000	3.2
[mm] SIM focus pos	-0.684267	-0.6828225247311905			
[mm] SIM defocus	0	0.001444936568705701			
[mm] SIM translation stage pos	-190.132523	-190.1400660498719			
[mm] SIM translation stage offset	0	0.00754346686406393			
[s] Observation start time (MET)	89962978.184000	89962135.958059			
Observation start date	2000-11-07T05:41:54	2000-11-07T05:28:55			
[s] Observation end time (MET)	90000225.184000	90000540.147012			
Observation end date	2000-11-07T16:02:41	2000-11-07T16:09:00			
Read mode	TIMED	TIMED			

2.3 Aspect



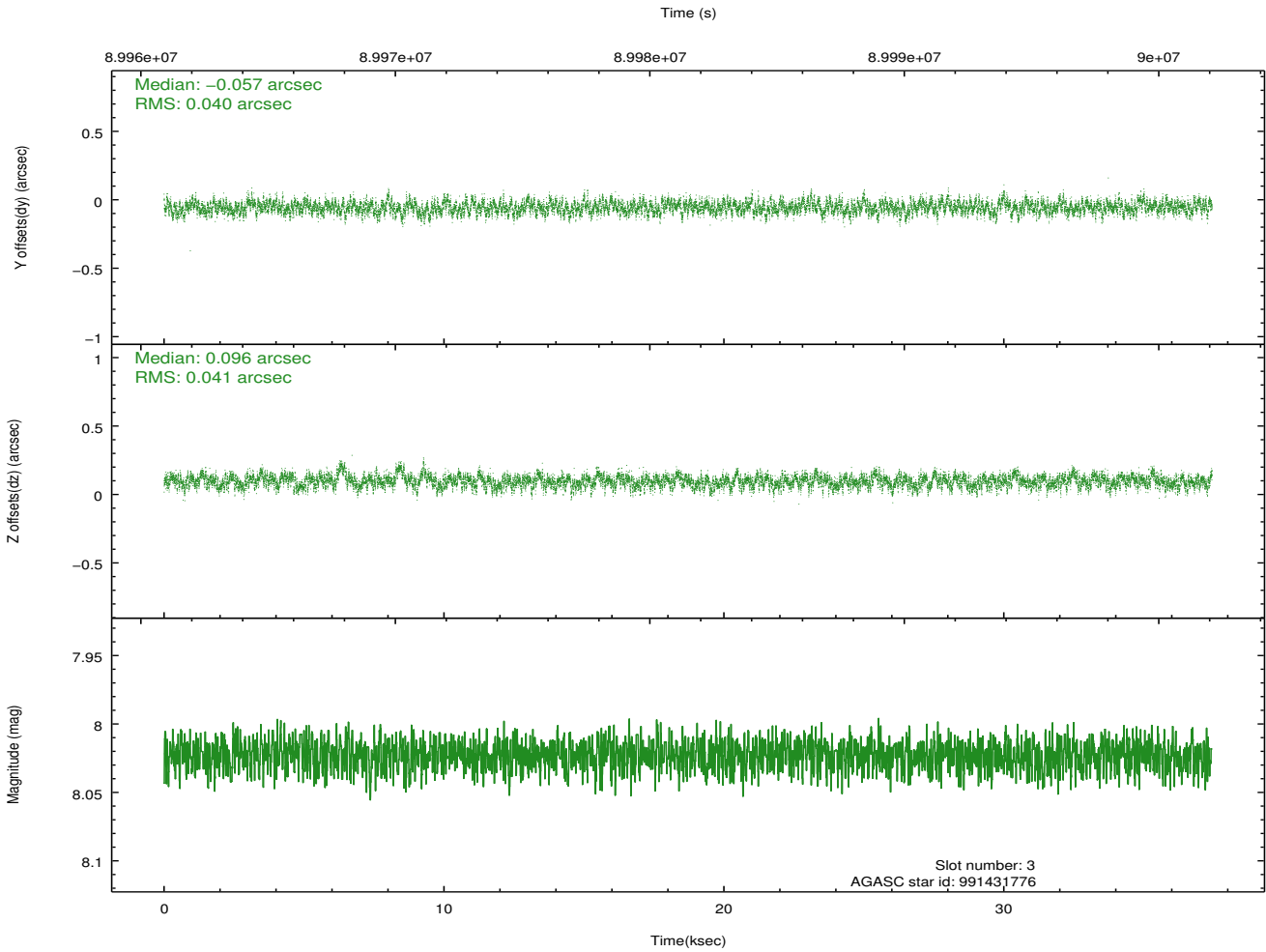
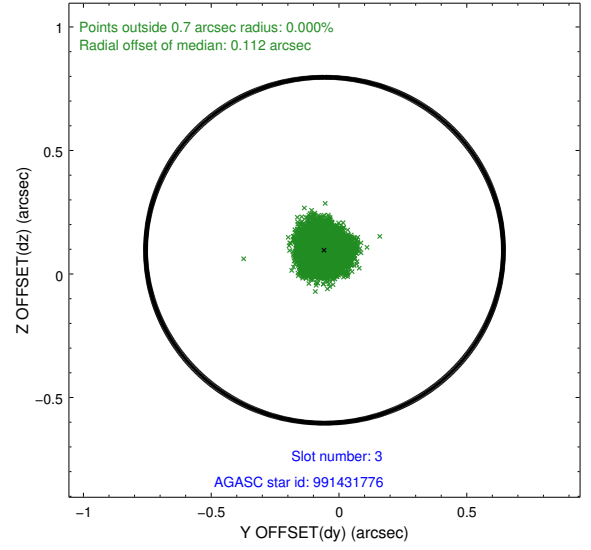
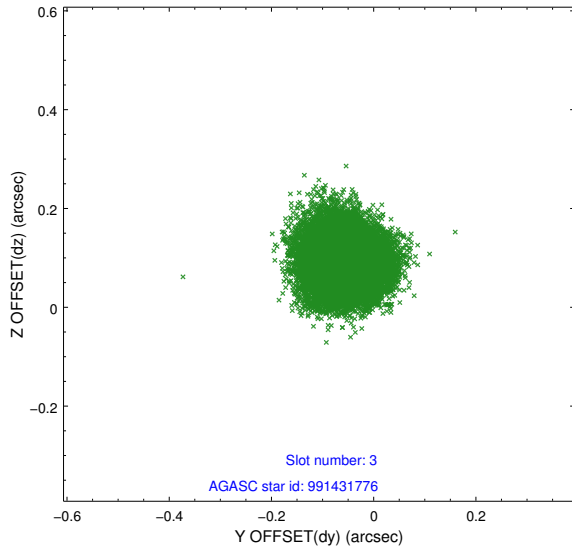


Slot Statistics

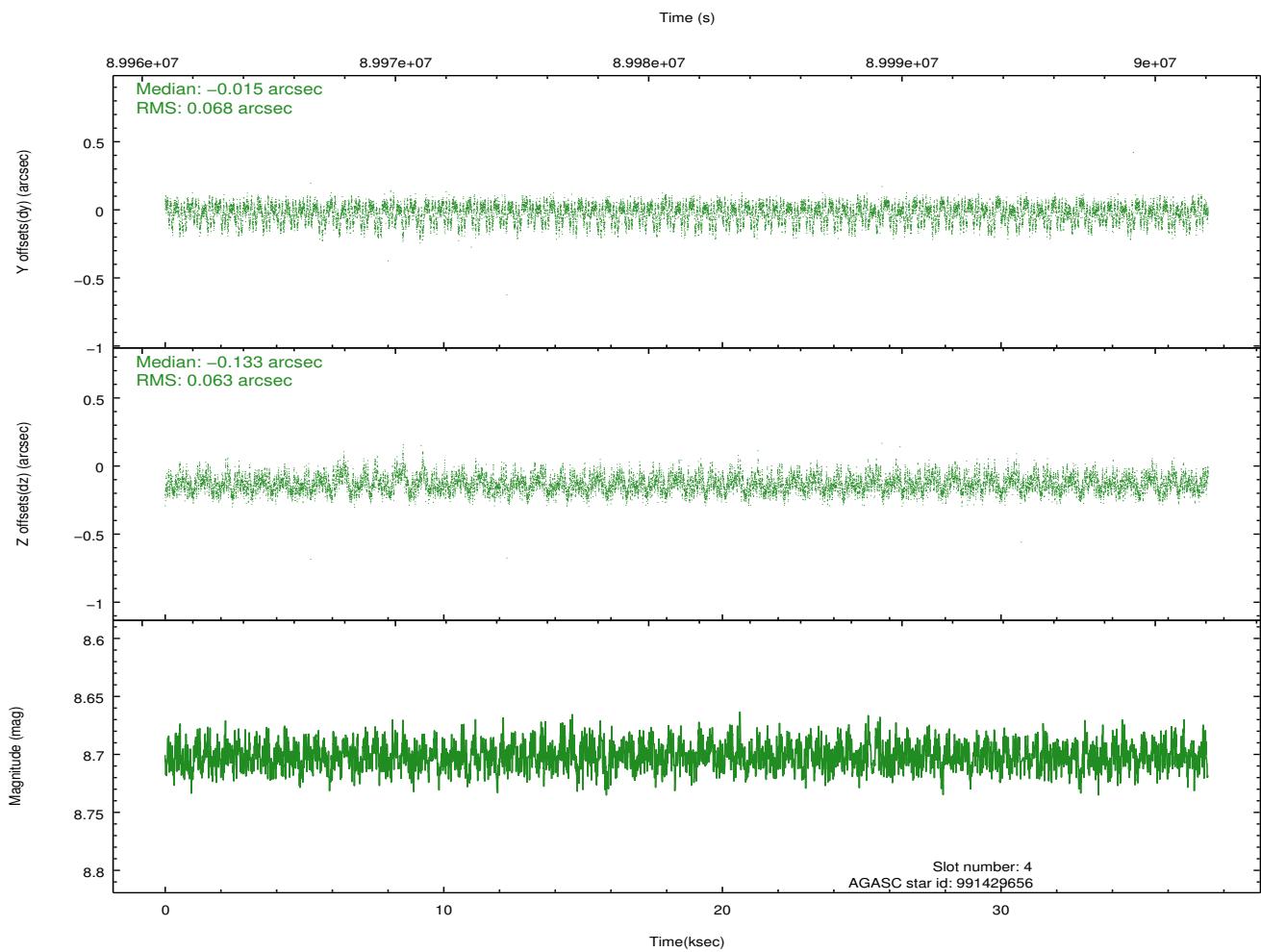
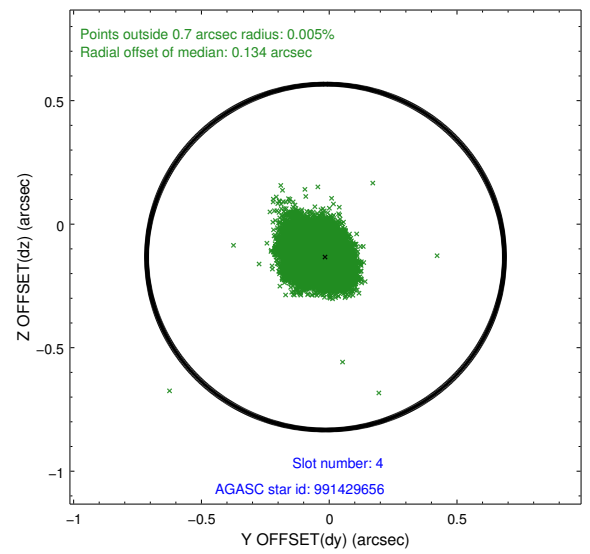
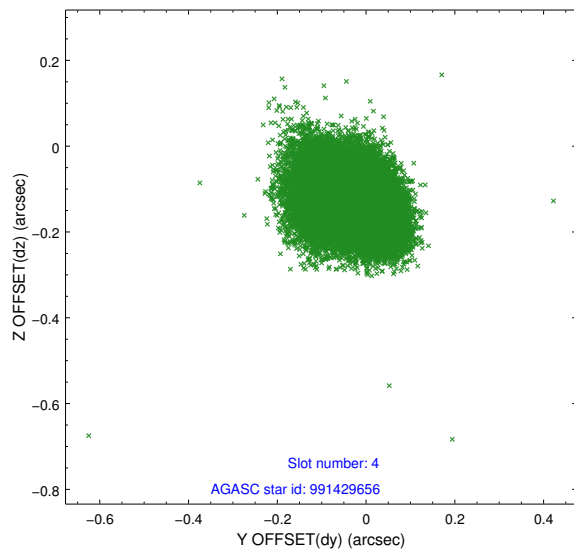
slot	status	id	mag	n_pts	med_dy	med_dz	dr1	dr2	ra	dec	mean_y	mean_z
0	FID	ACIS-S-2	7.11	9132	-0.037	-0.012	0.007	0.011	0.000000	0.000000	-754.69	-1725.80
1	FID	ACIS-S-4	7.20	9132	-0.007	0.021	0.006	0.011	0.000000	0.000000	2158.58	182.72
2	FID	ACIS-S-5	7.24	9132	0.012	-0.000	0.007	0.012	0.000000	0.000000	-1807.47	176.35
3	GUIDE	991431776	8.02	18259	-0.057	0.096	0.061	0.098	48.819128	-41.230215	-1469.63	-202.01
4	GUIDE	991429656	8.70	18254	-0.015	-0.133	0.099	0.158	49.345871	-40.469939	308.46	2324.92
5	GUIDE	992356064	9.13	18259	-0.010	0.054	0.092	0.151	50.056275	-41.711435	1605.14	-2366.23
6	GUIDE	991432392	9.90	18245	0.005	-0.017	0.110	0.182	49.526093	-41.573750	260.95	-1678.56
7	GUIDE	991431272	10.40	18237	0.080	0.015	0.151	0.292	49.440709	-41.283139	173.42	-610.84

2.4 Star Slots

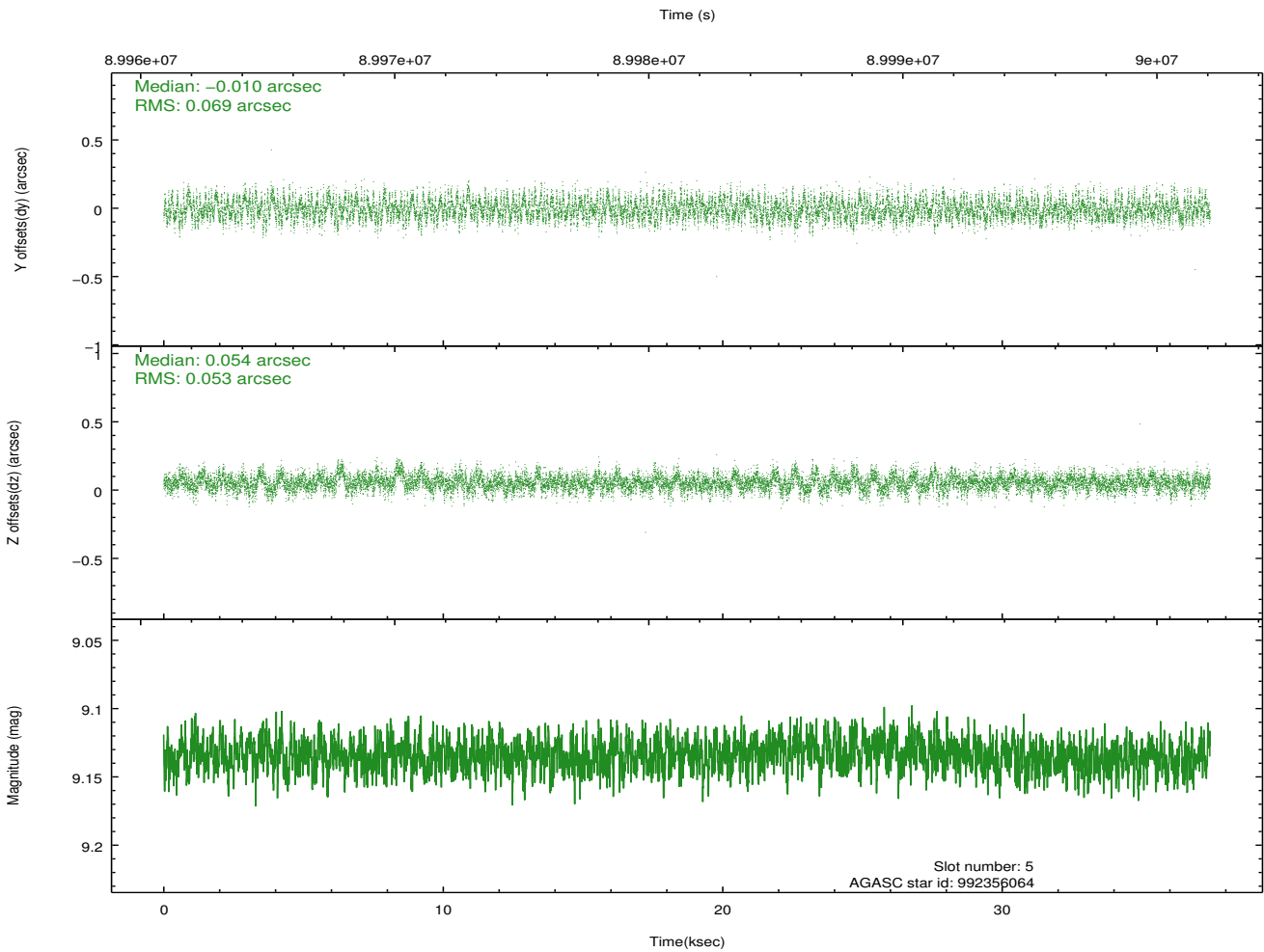
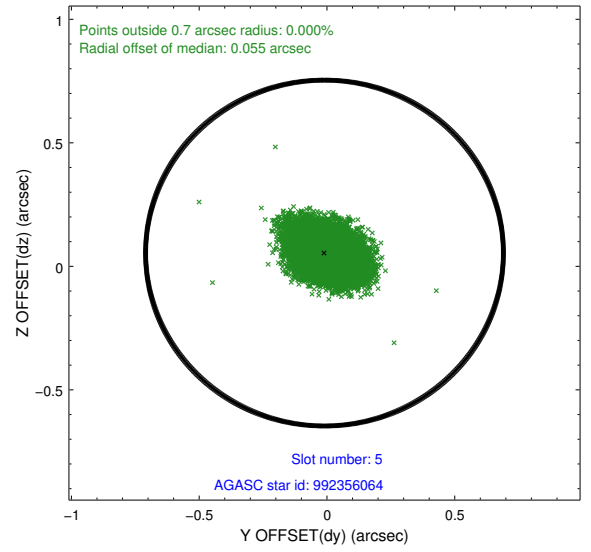
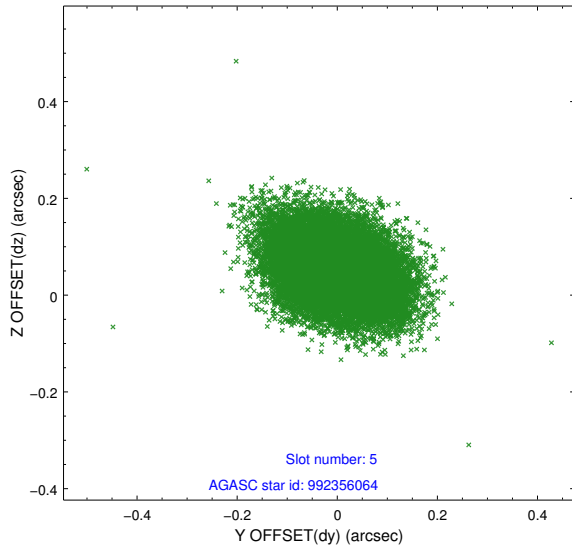
2.4.1 Slot 3



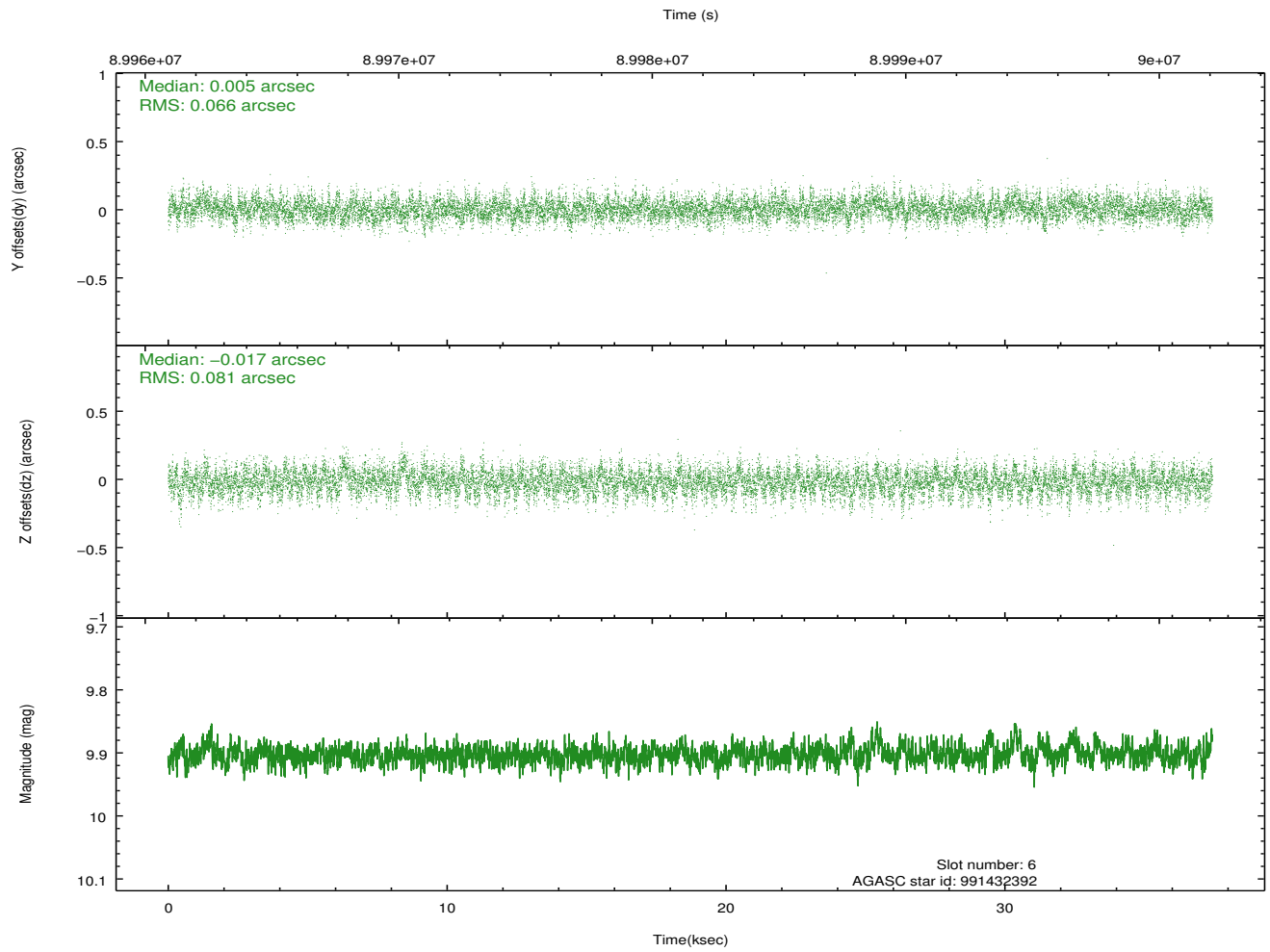
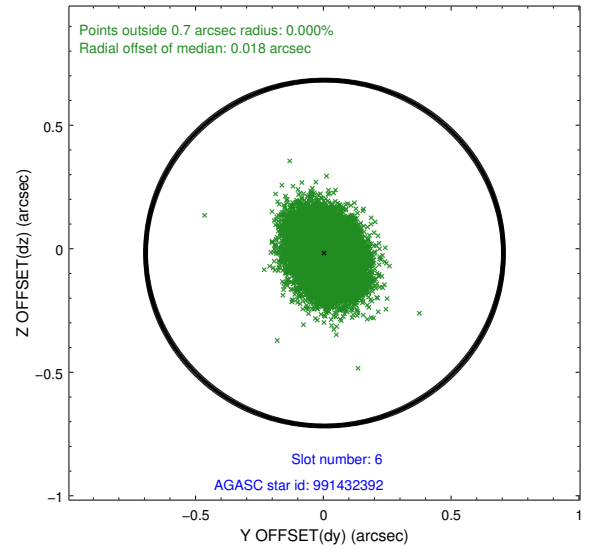
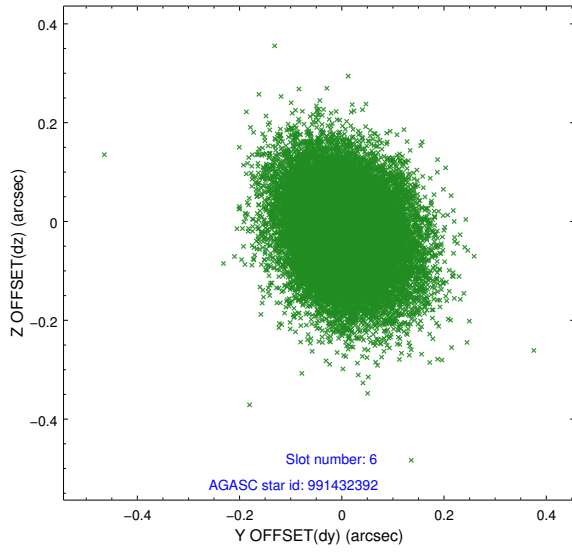
2.4.2 Slot 4



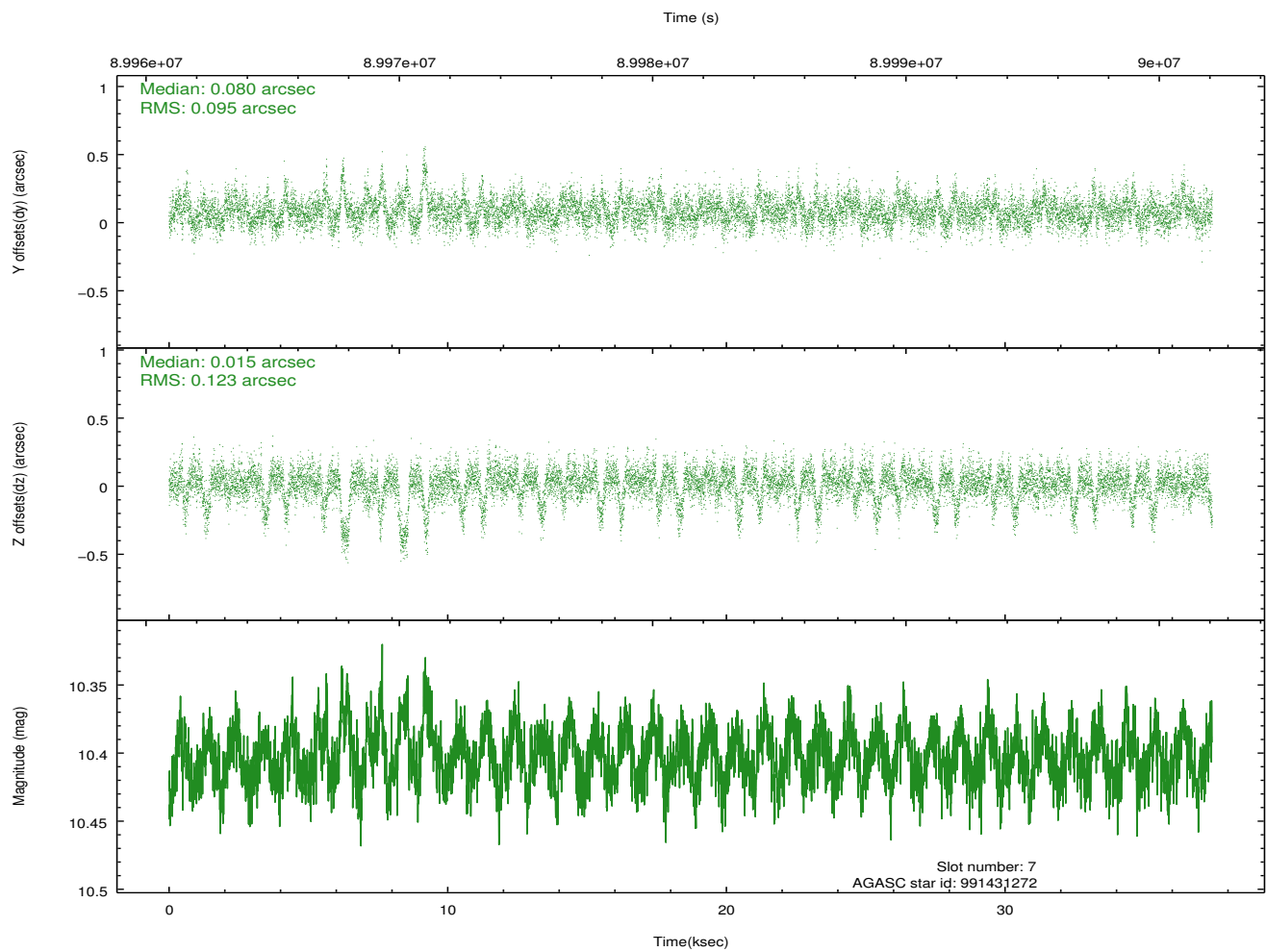
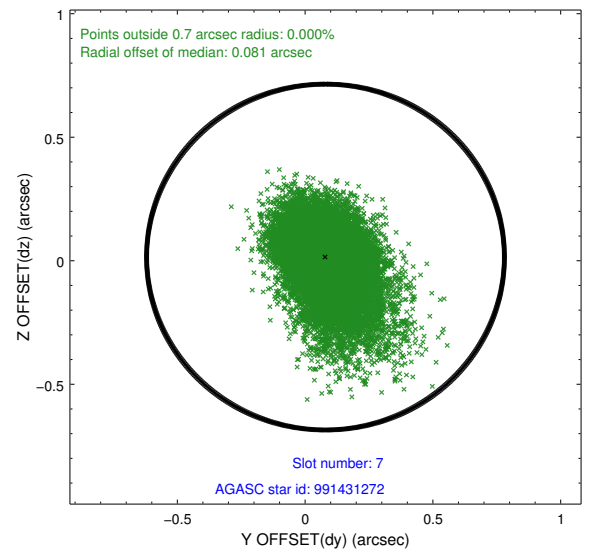
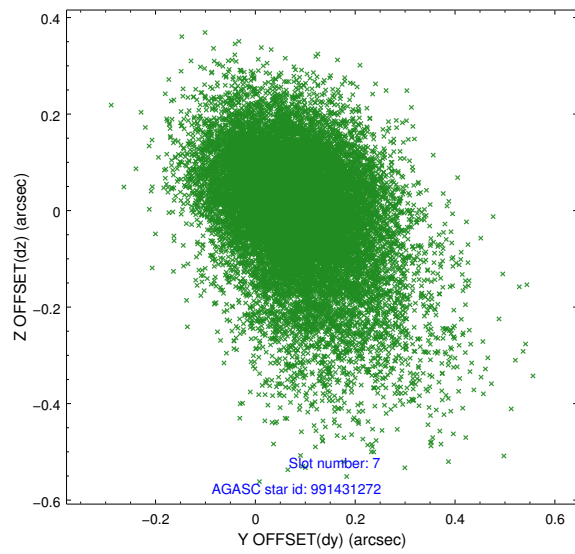
2.4.3 Slot 5



2.4.4 Slot 6

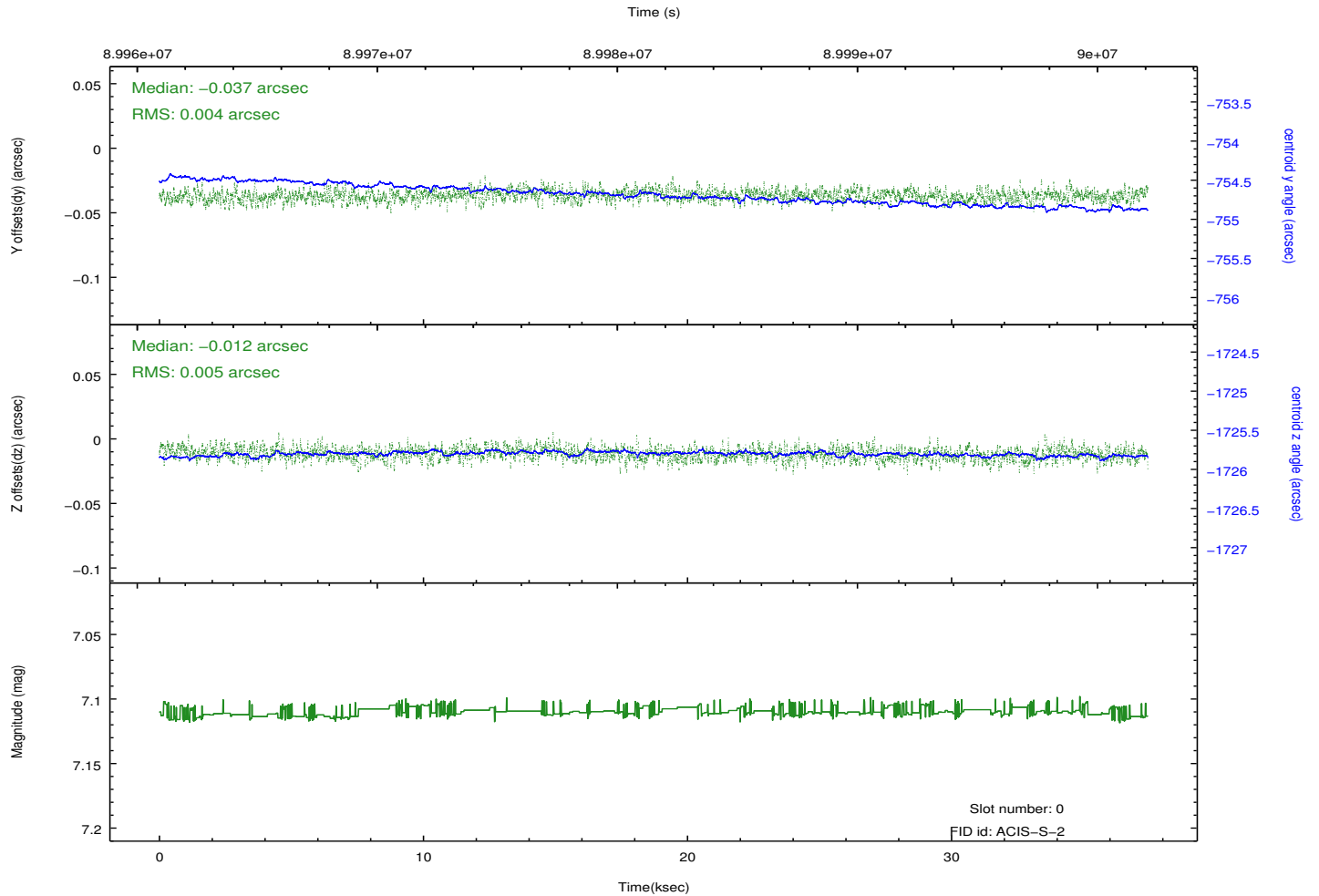
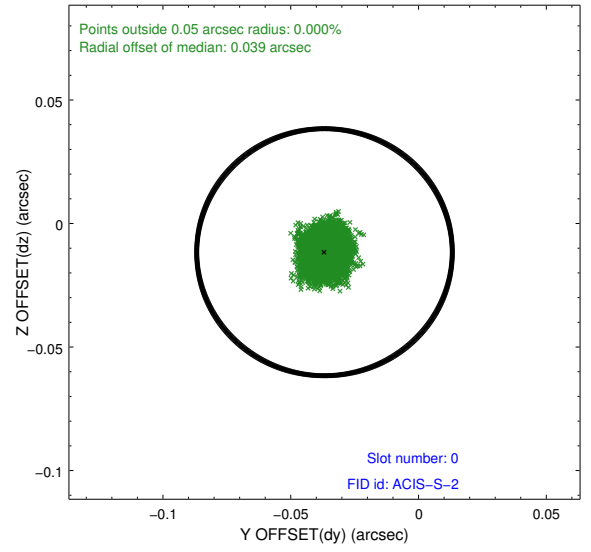
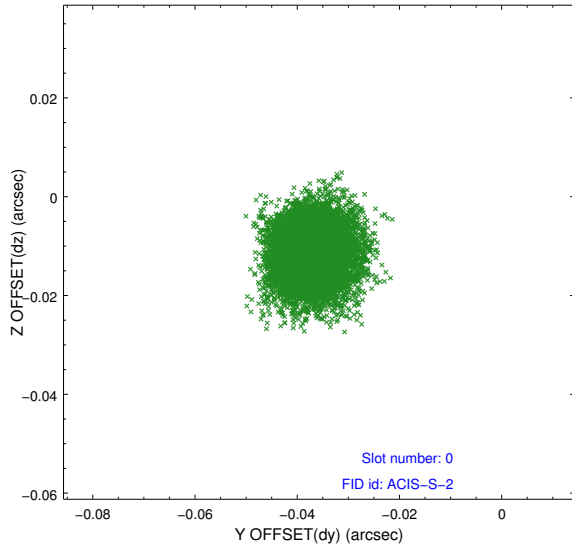


2.4.5 Slot 7

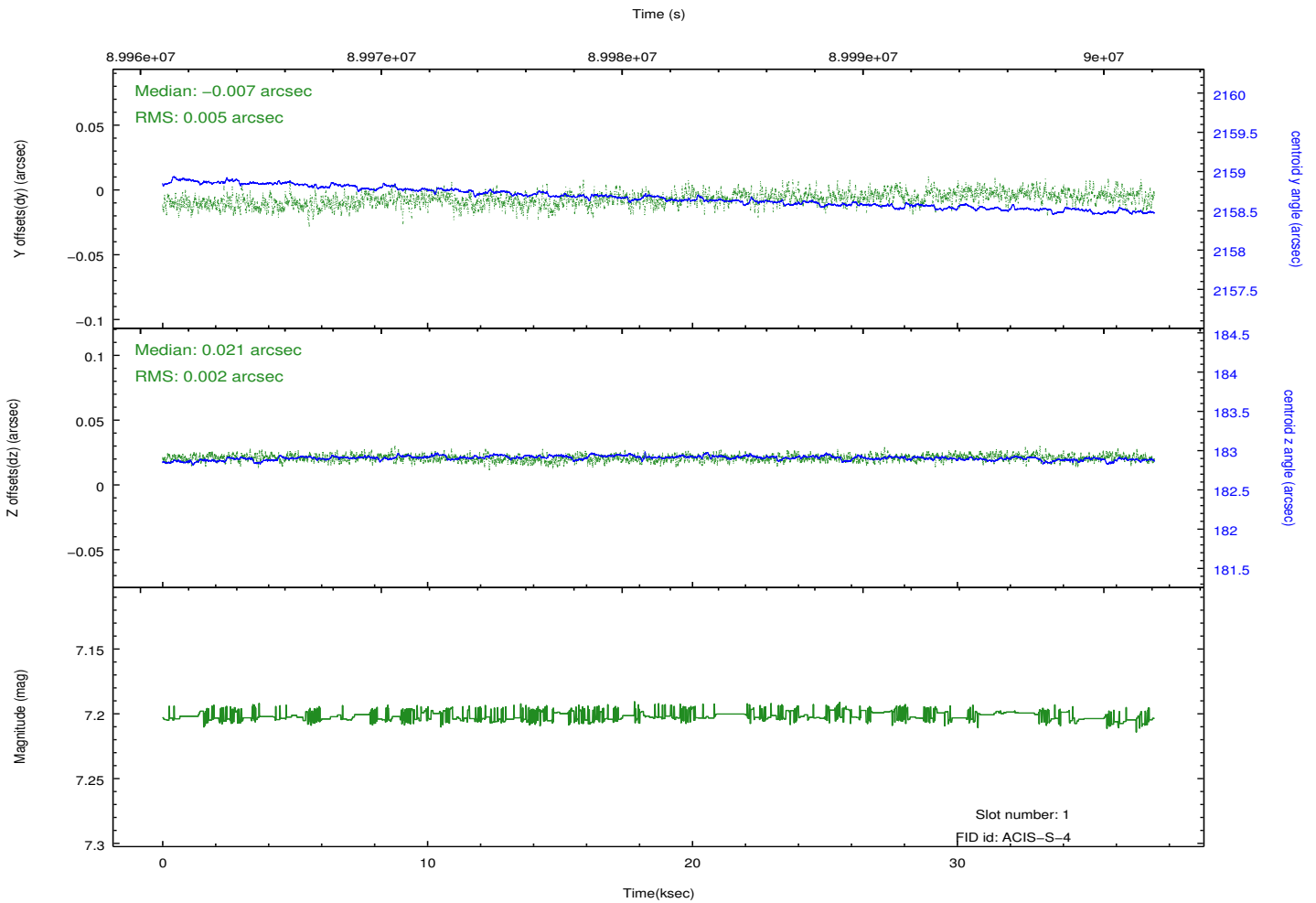
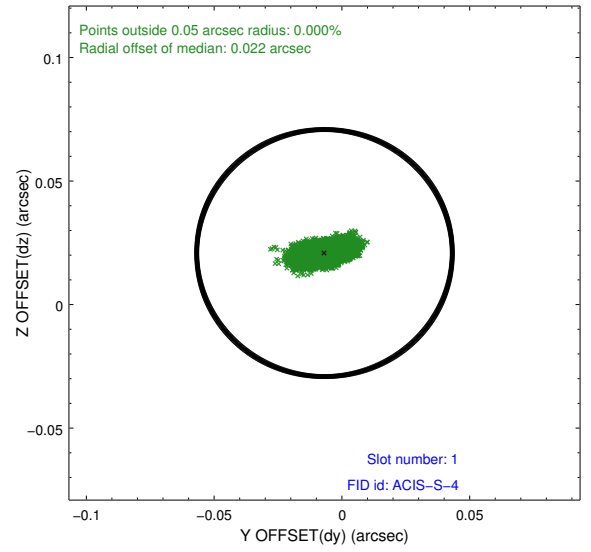
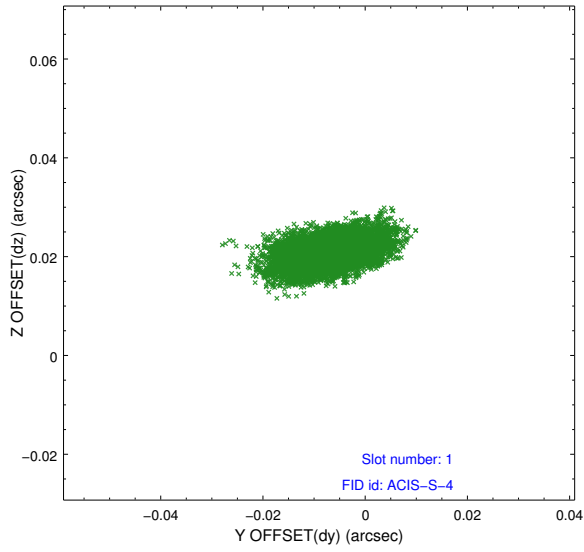


2.5 FID Slots

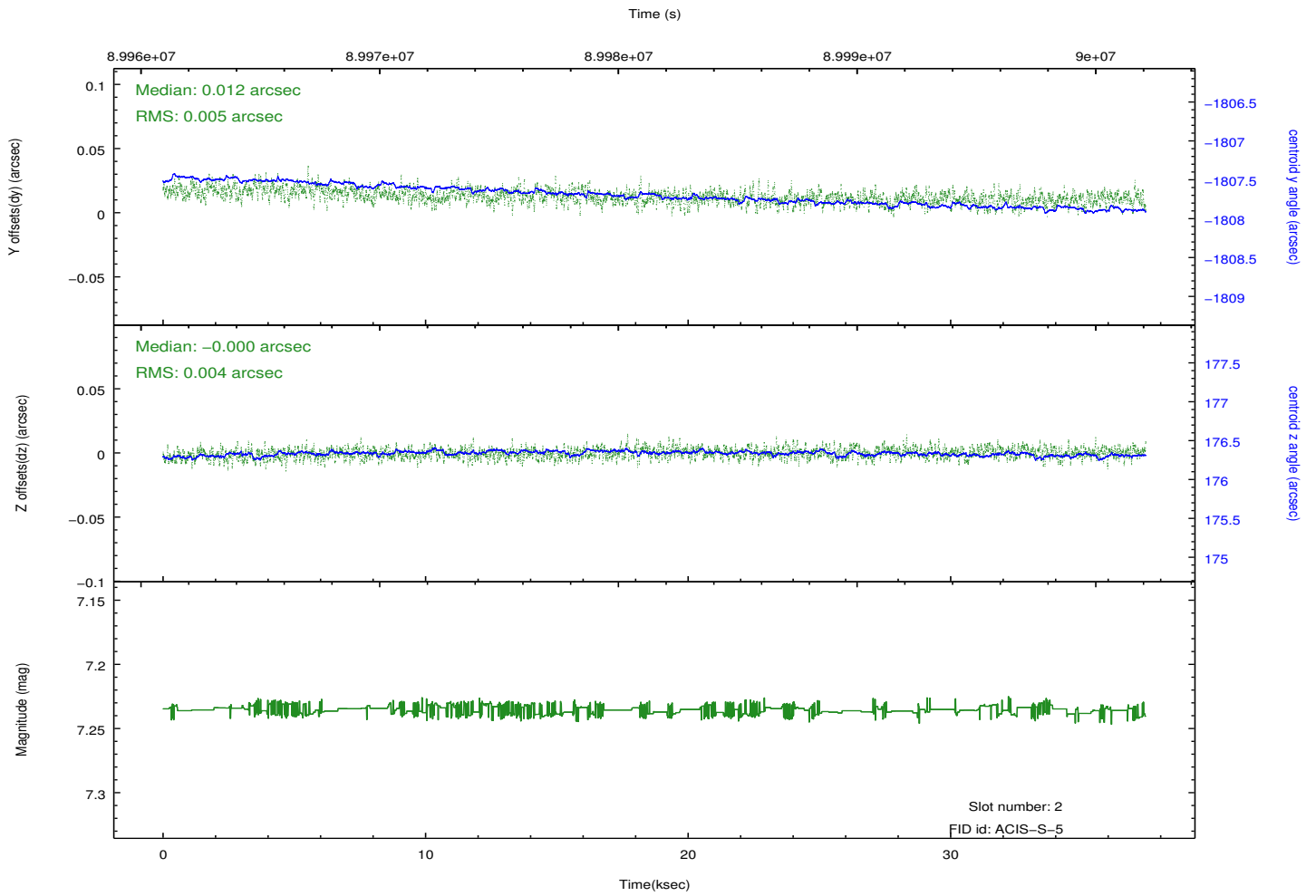
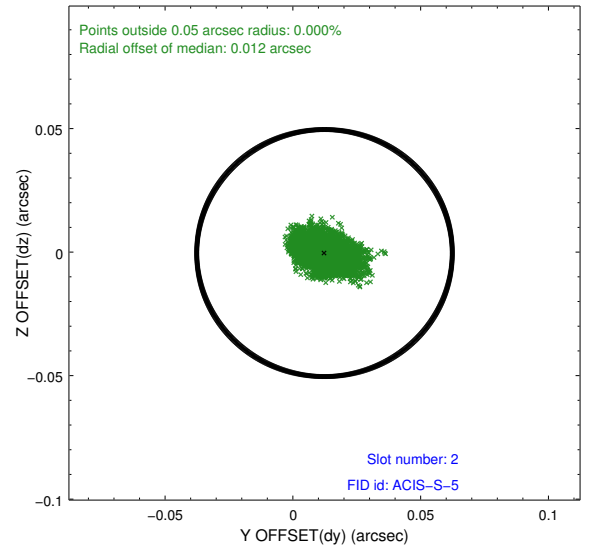
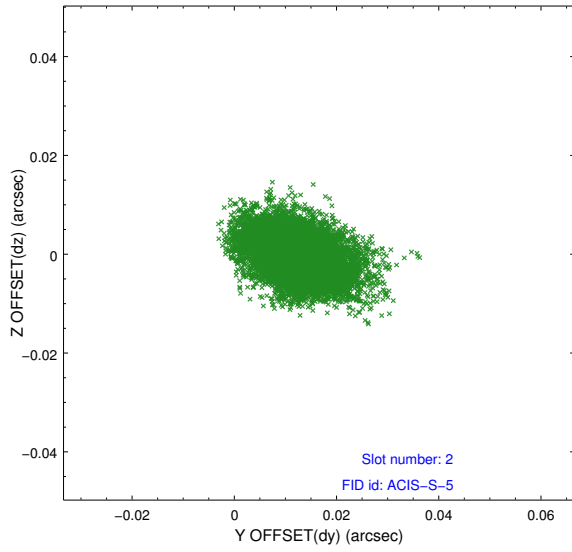
2.5.1 Slot 0



2.5.2 Slot 1



2.5.3 Slot 2



A Summary

A.1 Status

V&V Scientist	Jen Lauer
V&V Date (YYYY-MM-DD)	2012.09.11
V&V Edition	1
V&V Disposition and Status	OK
V&V Charge Time	37.001

A.2 Comments