

V&V Reference Report

L2 ASCDS Version : 8.4.5

Observation 2079 - L2 Version 3
Chandra X-Ray Center

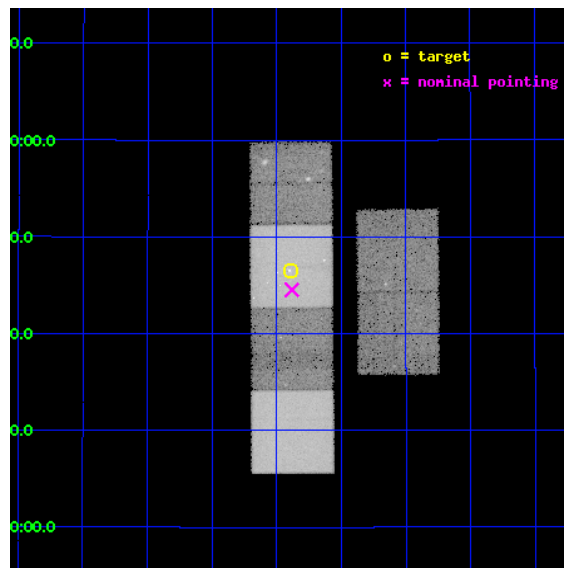
L2 Processing Date : Sep 21 2012

Contents

1	Front	2
2	OBI	3
2.1	OBI	3
2.1.1	Images	3
2.1.2	Bias	3
2.1.3	Parameters	4
2.1.4	Events	4
2.2	Compared Parameters	5
2.3	Aspect	6
2.4	Star Slots	9
2.4.1	Slot 3	9
2.4.2	Slot 4	10
2.4.3	Slot 5	11
2.4.4	Slot 6	12
2.4.5	Slot 7	13
2.5	FID Slots	14
2.5.1	Slot 0	14
2.5.2	Slot 1	15
2.5.3	Slot 2	16
A	Summary	17
A.1	Status	17
A.2	Comments	17

1 Front

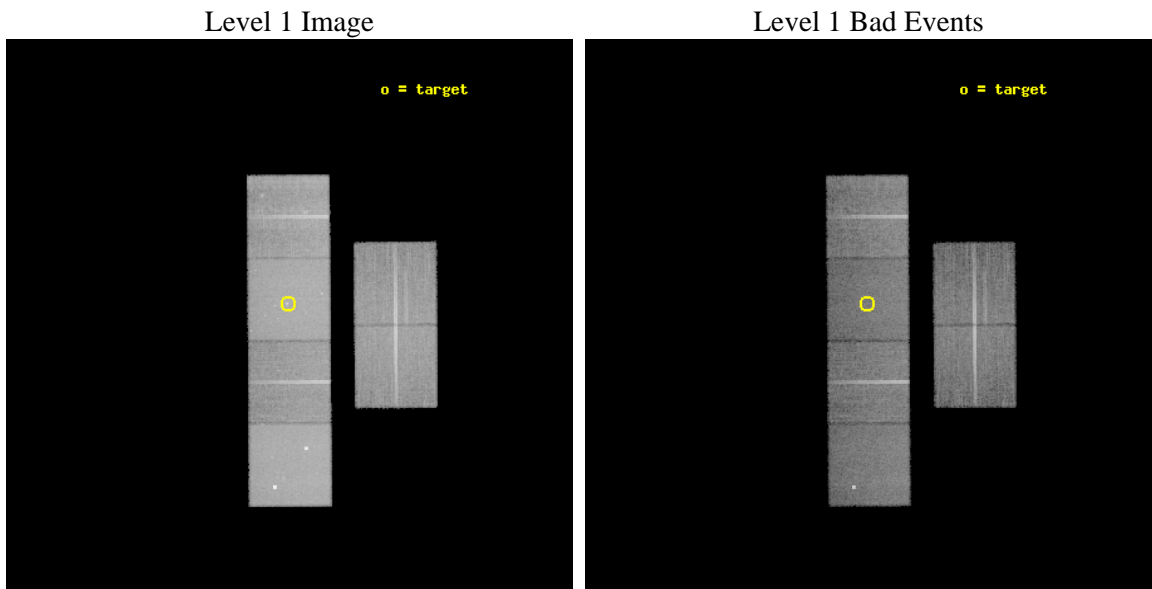
seq_num	600213	Sequence number
obs_id	2079	Observation id
title	GALACTIC WINDS AND COOLING FLOWS IN ELLIPTICAL GALAXIES	Proposal t
observer	Dr. Joel Bregman	Principal investigator
object	NGC 4494	Source name
dtcycle	0	
cycle	P	events from which exps? Prim/Second/Both
ra_targ	187.847917	Observer's specified target RA [deg]
dec_targ	25.775556	Observer's specified target Dec [deg]
ra_nom	187.84566998634	Nominal RA [deg]
dec_nom	25.74231636138	Nominal Dec [deg]
roll_nom	269.58424436651	Nominal Roll [deg]
revision	3	Processing version of data
ontime	25155.200023413	Sum of GTIs [s]
livetime	24836.669734073	Livetime [s]
ontime2	25155.200023413	Sum of GTIs [s]
ontime3	25151.959073156	Sum of GTIs [s]
ontime5	25155.200023413	Sum of GTIs [s]
ontime6	25148.718102902	Sum of GTIs [s]
ontime7	25155.200023413	Sum of GTIs [s]
ontime8	25155.200023413	Sum of GTIs [s]
l2events	345382	Number of level 2 events



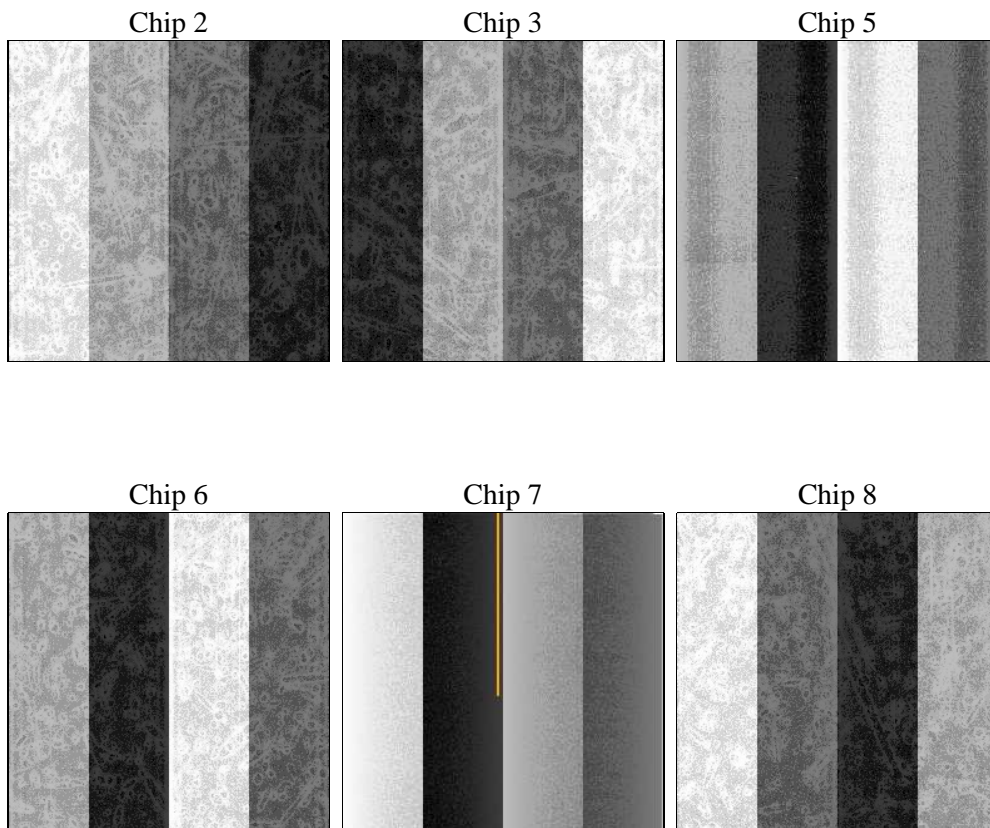
2 OBI

2.1 OBI

2.1.1 Images



2.1.2 Bias



2.1.3 Parameters

obi_num	0	Obi number	sched_exp_time	25000.000000	[s] Scheduled observation exposure time
ascdsver	8.4.5	Processing system revision	ontime	25155.200023413	Sum of GTIs [s]
caldbver	4.5.1.1	 	ontime2	25155.200023413	Sum of GTIs [s]
date	2012-09-21T11:38:50	Date and time of file creation	ontime3	25151.959073156	Sum of GTIs [s]
revision	3	Processing version of data	ontime5	25155.200023413	Sum of GTIs [s]
			ontime6	25148.718102902	Sum of GTIs [s]
			ontime7	25155.200023413	Sum of GTIs [s]
			ontime8	25155.200023413	Sum of GTIs [s]
			l1events	1247940	Number of level 1 events

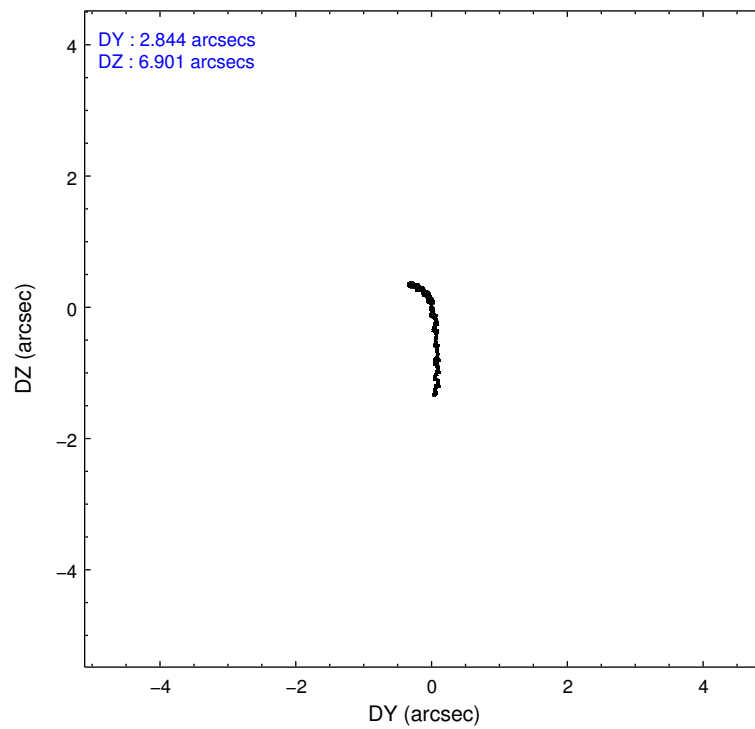
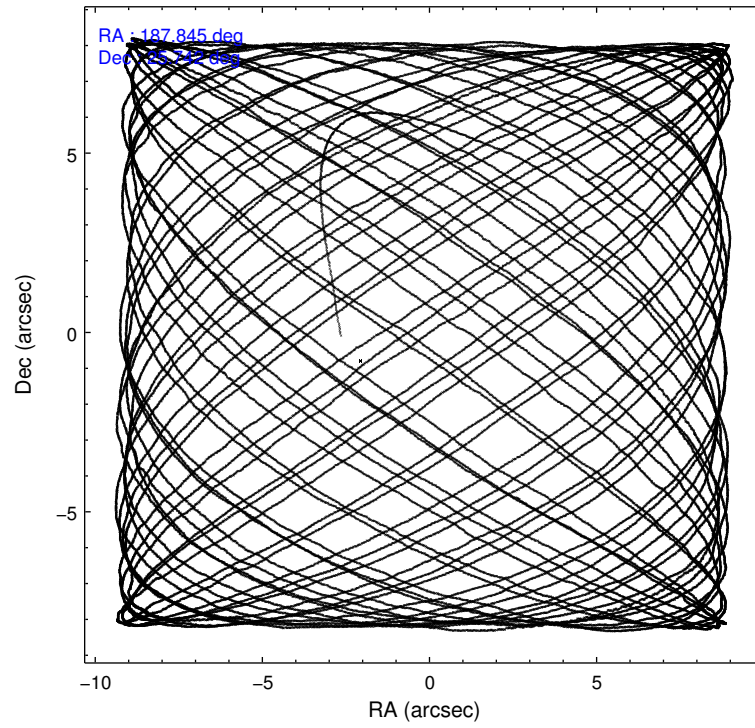
2.1.4 Events

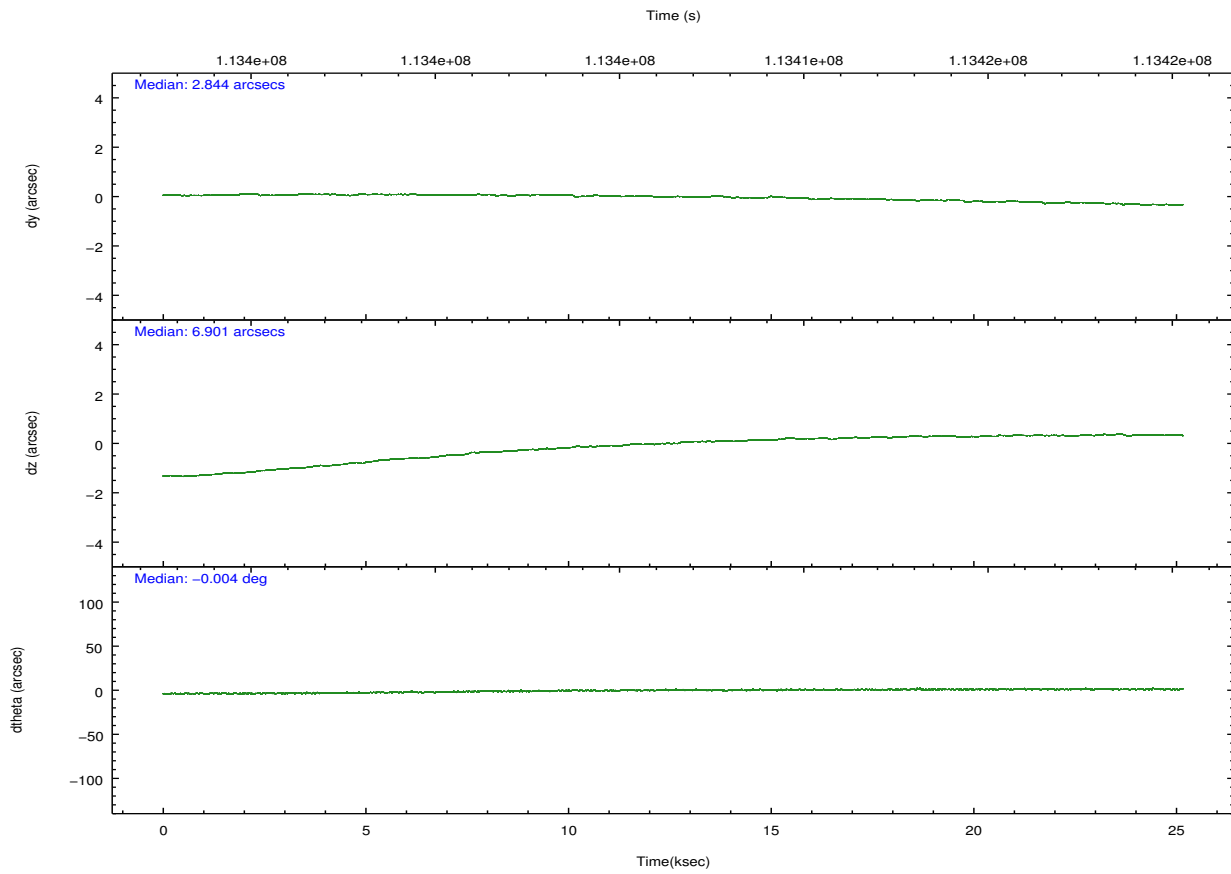
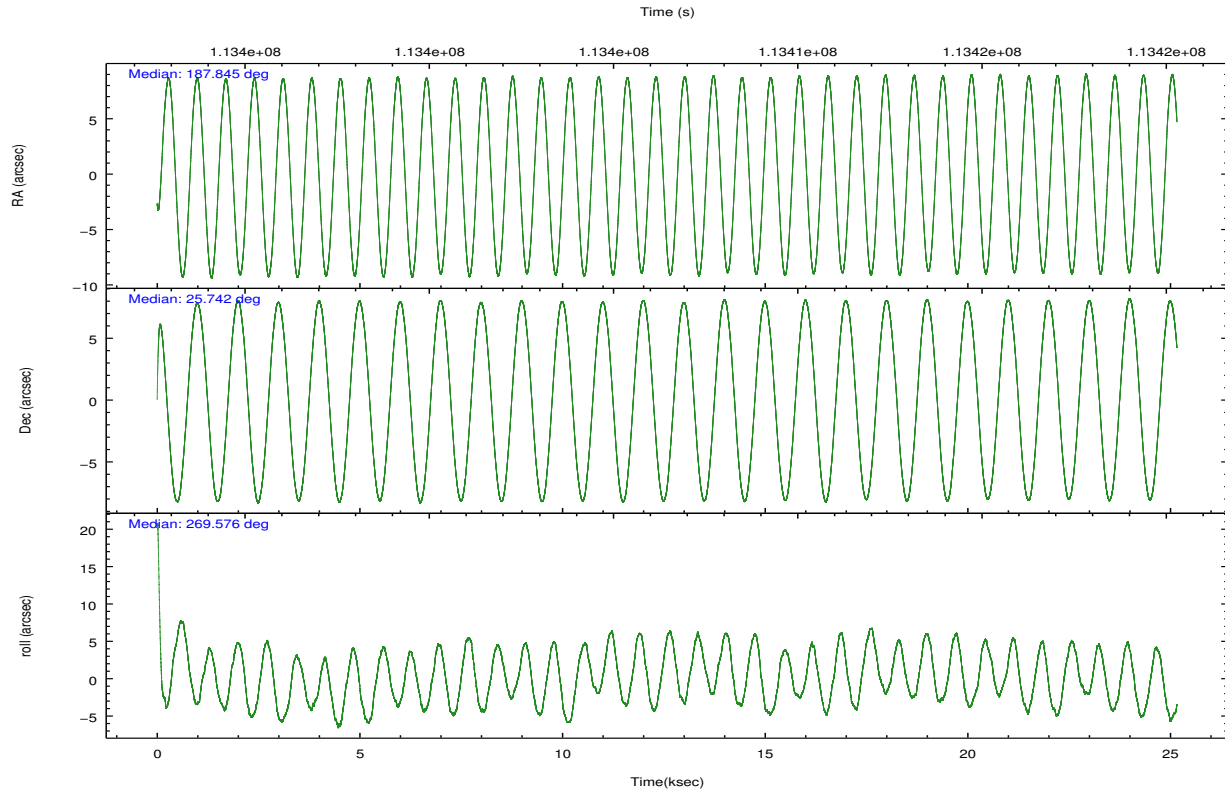
	ccd 2	ccd 3	ccd 5	ccd 6	ccd 7	ccd 8		ccd 2	ccd 3	ccd 5	ccd 6	ccd 7	ccd 8
level 1 events	170774	162437	275723	171239	253848	213919	grade 0 events	9766	9629	21276	11903	14337	18131
rejected events	149515	141560	130160	147119	123151	166252		5%	5%	7%	6%	5%	8%
rejected %	87%	87%	47%	85%	48%	77%	grade 1 events	84	101	2527	91	202	122
								0%	0%	0%	0%	0%	0%
							grade 2 events	4499	4167	40285	4551	24654	10041
								2%	2%	14%	2%	9%	4%
							grade 3 events	1806	1852	7109	1921	11135	4591
								1%	1%	2%	1%	4%	2%
							grade 4 events	1795	1838	6904	1898	11065	4273
								1%	1%	2%	1%	4%	1%
							grade 5 events	5600	6091	18354	7104	20128	8717
								3%	3%	6%	4%	7%	4%
							grade 6 events	3397	3402	70027	3855	69570	10661
								1%	2%	25%	2%	27%	4%
							grade 7 events	143827	135357	109241	139916	102757	157383
								84%	83%	39%	81%	40%	73%

2.2 Compared Parameters

Parameter	Planned	Actual	Parameter	Planned	Actual
Instrument	ACIS	ACIS	Obspar format version number	7	7
Detector	ACIS-235678	ACIS-235678	Obspar file type	PREDICTED	ACTUAL
Grating	NONE	NONE	Obspar update status	NONE	UPDATED
Data mode	FAINT	FAINT	Number of optional ACIS chips dropped	0	0
Observation mode	POINTING	POINTING	On-chip summing requested	N	N
[deg] Pointing RA	187.830409	187.8456699863376	Subarray requested	NONE	NONE
[deg] Pointing Dec	25.765872	25.74231636138036	Alternating exposures requested	N	N
[deg] Pointing Roll	269.434245	269.5842443665079	[s] Primary exposure time	0.000000	3.2
[mm] SIM focus pos	-0.684267	-0.6828225247311905			
[mm] SIM defocus	0	0.001444936568705701			
[mm] SIM translation stage pos	-190.132523	-190.1400660498719			
[mm] SIM translation stage offset	0	0.00754346686406393			
[s] Observation start time (MET)	113394031.184000	113392812.76408			
Observation start date	2001-08-05T10:19:27	2001-08-05T10:00:12			
[s] Observation end time (MET)	113419031.184000	113419989.61515			
Observation end date	2001-08-05T17:16:07	2001-08-05T17:33:09			
Read mode	TIMED	TIMED			

2.3 Aspect



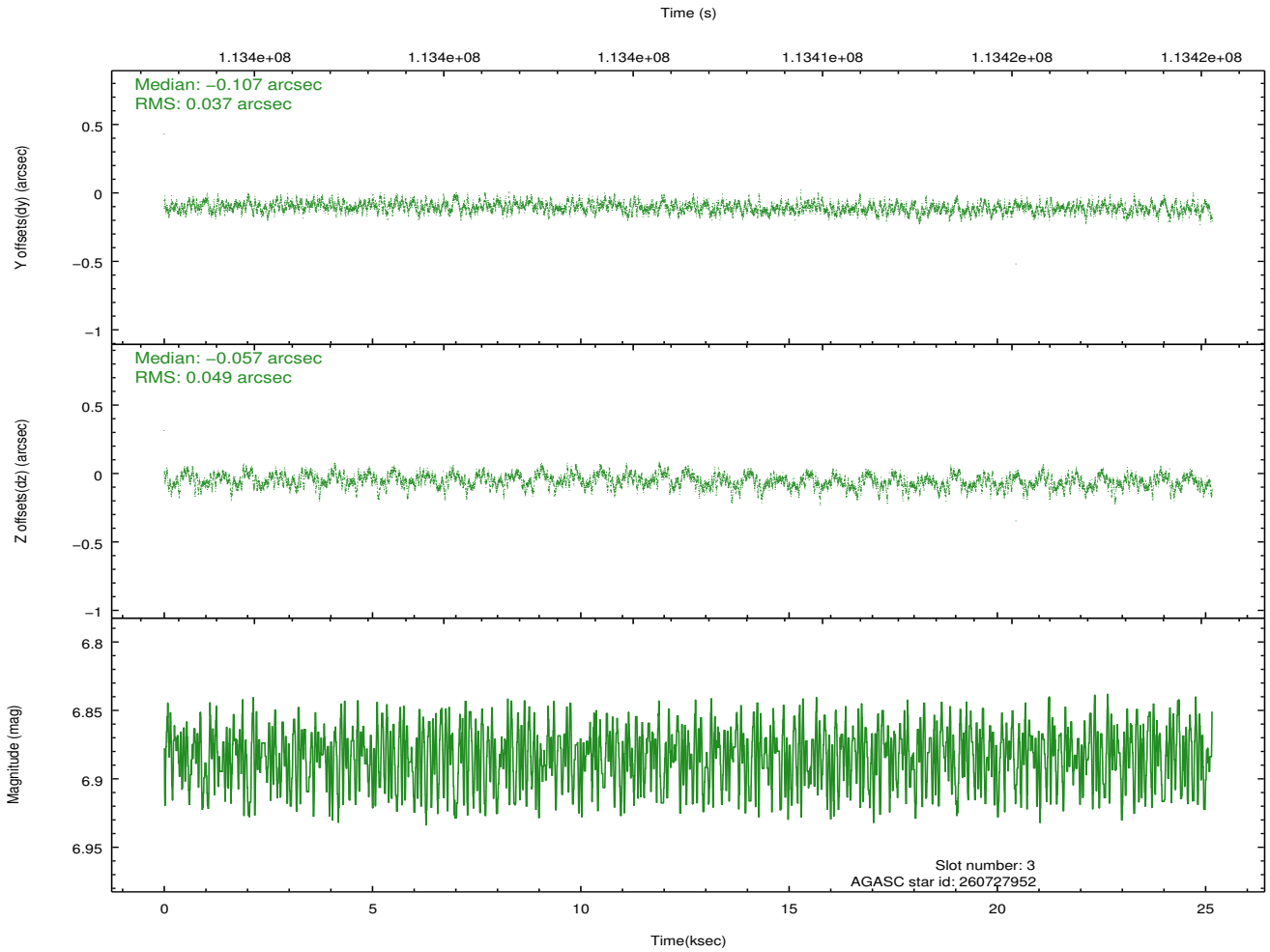
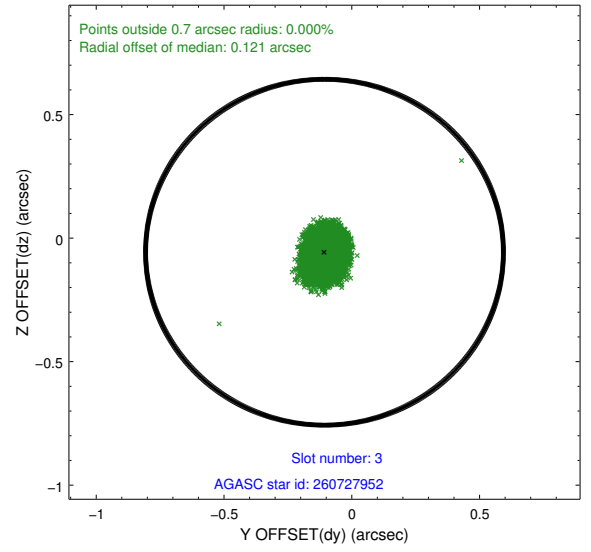
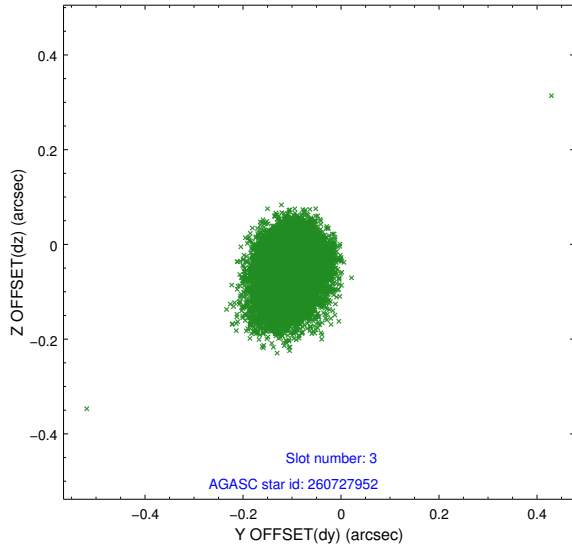


Slot Statistics

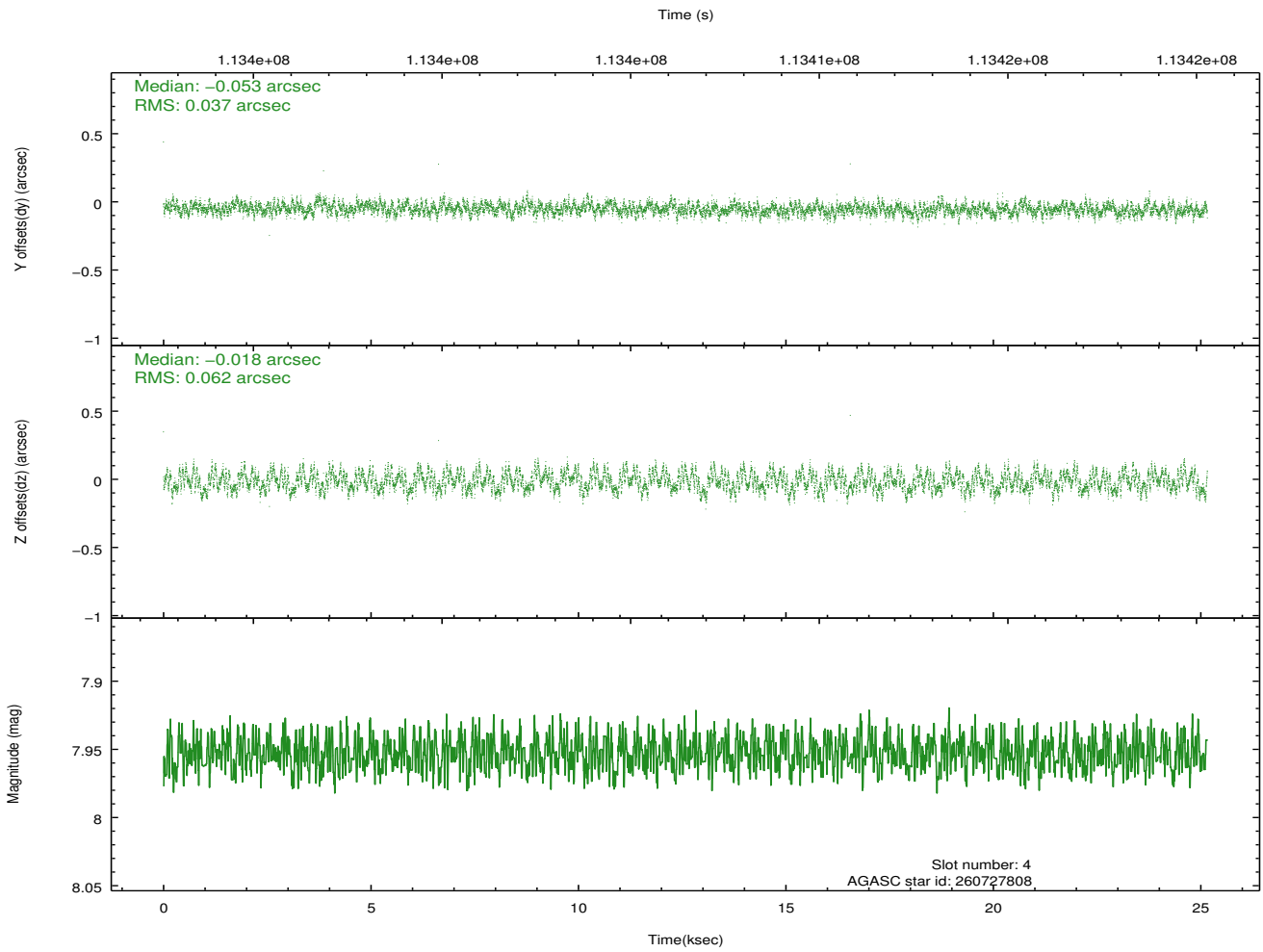
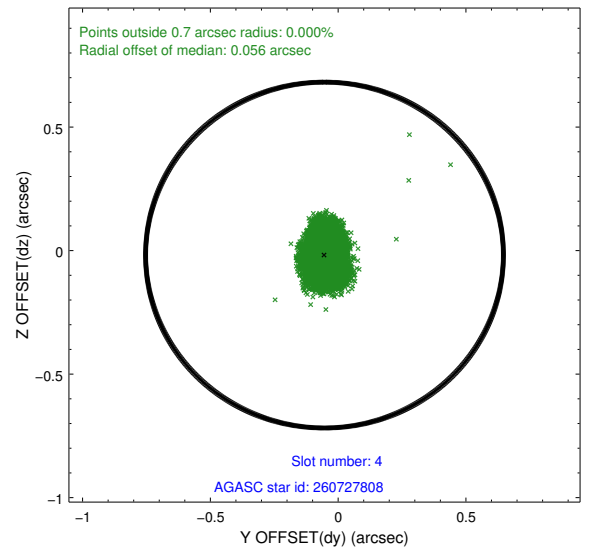
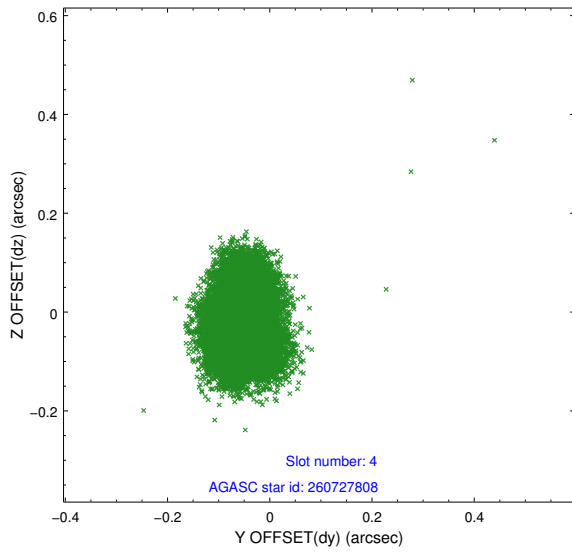
slot	status	id	mag	n_pts	med_dy	med_dz	dr1	dr2	ra	dec	mean_y	mean_z
0	FID	ACIS-S-2	7.11	6137	-0.015	0.006	0.015	0.020	0.000000	0.000000	-755.43	-1727.87
1	FID	ACIS-S-4	7.20	6136	-0.046	0.007	0.011	0.020	0.000000	0.000000	2157.74	180.52
2	FID	ACIS-S-5	7.24	6135	0.032	-0.000	0.013	0.019	0.000000	0.000000	-1808.09	174.28
3	GUIDE	260727952	6.88	12275	-0.107	-0.057	0.065	0.105	187.158984	26.226958	-1643.91	-2184.00
4	GUIDE	260727808	7.95	12274	-0.053	-0.018	0.077	0.122	187.491479	26.120798	-1268.41	-1107.51
5	GUIDE	260718872	9.83	12259	0.232	-0.103	0.172	0.263	187.446779	25.247480	1876.87	-1229.64
6	GUIDE	260717160	9.26	12270	0.044	0.107	0.083	0.134	188.060460	25.970238	-743.63	738.01
7	GUIDE	261097208	8.51	12269	-0.121	0.058	0.102	0.159	188.588563	26.289040	-1915.17	2429.29

2.4 Star Slots

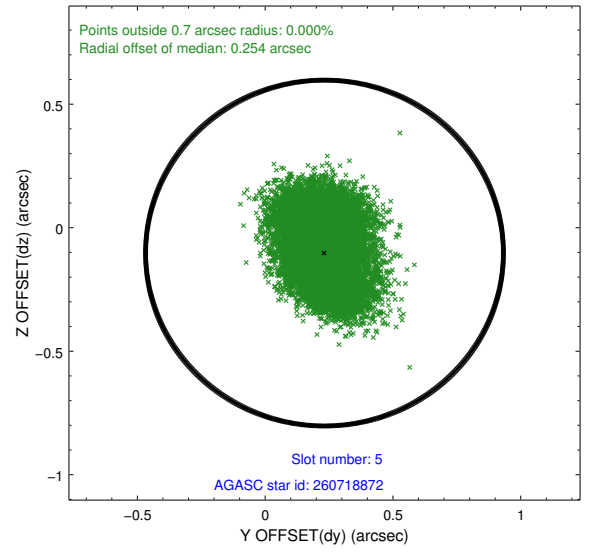
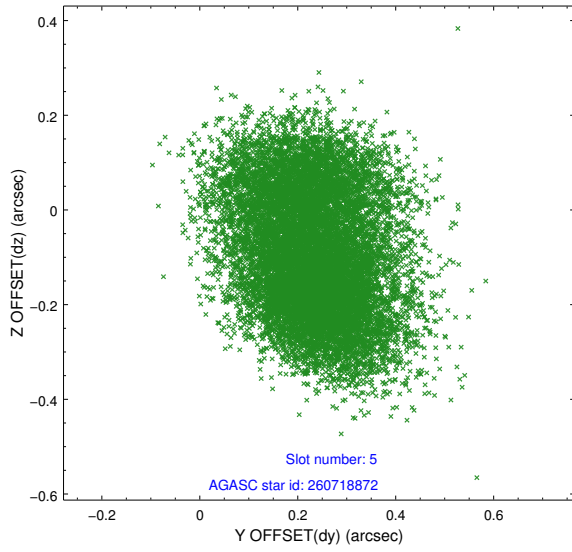
2.4.1 Slot 3



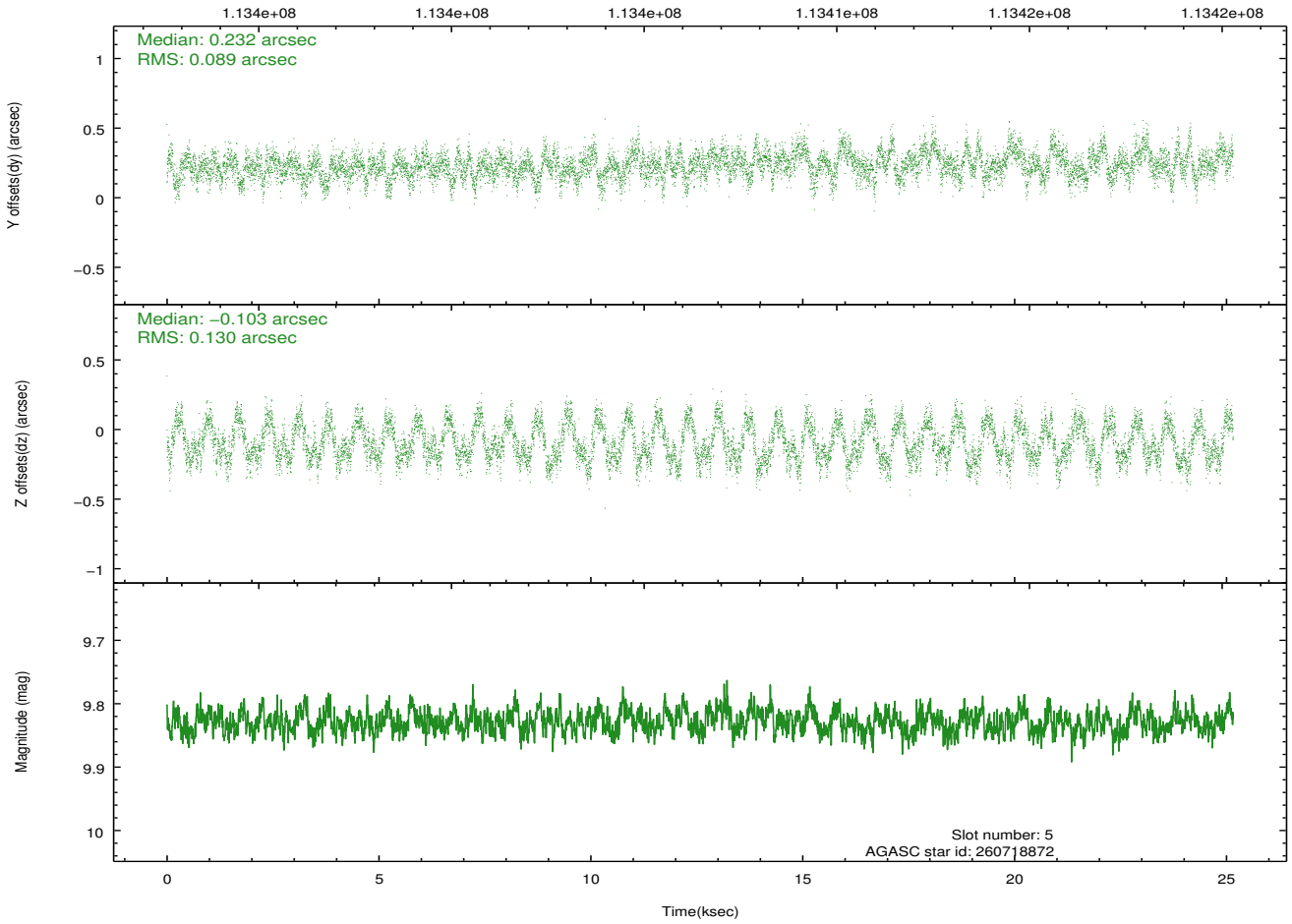
2.4.2 Slot 4



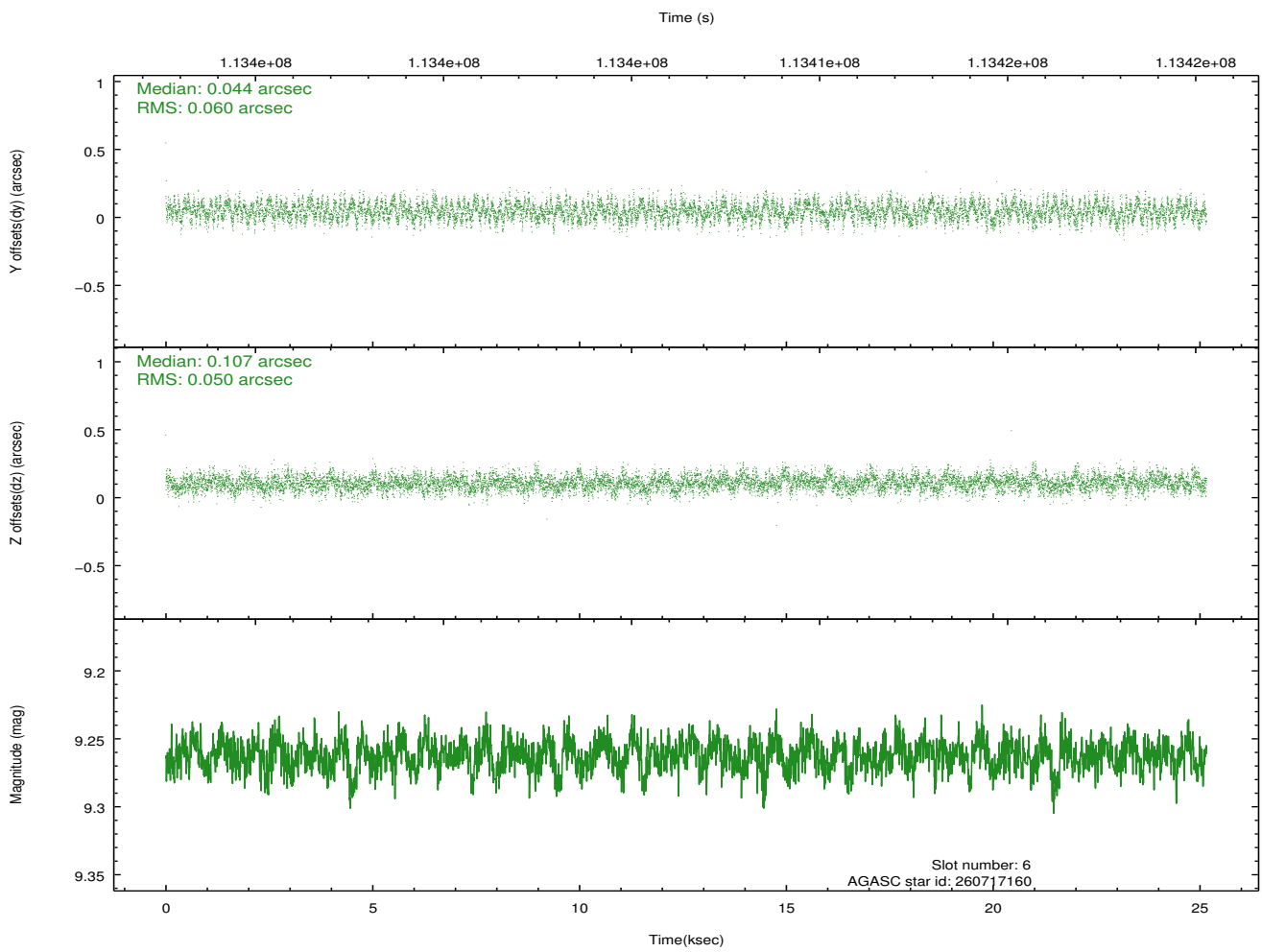
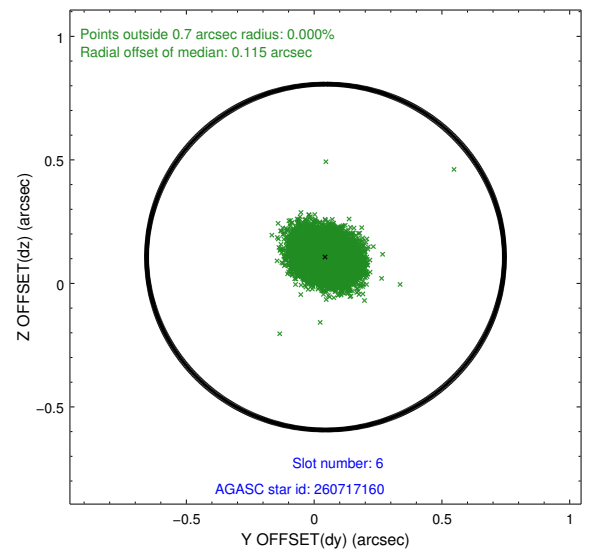
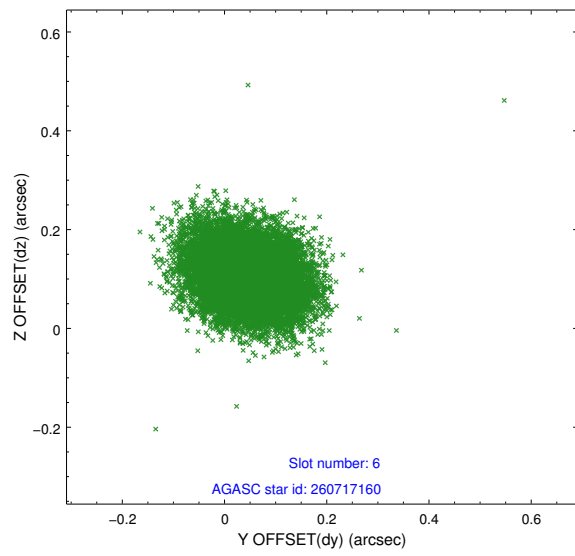
2.4.3 Slot 5



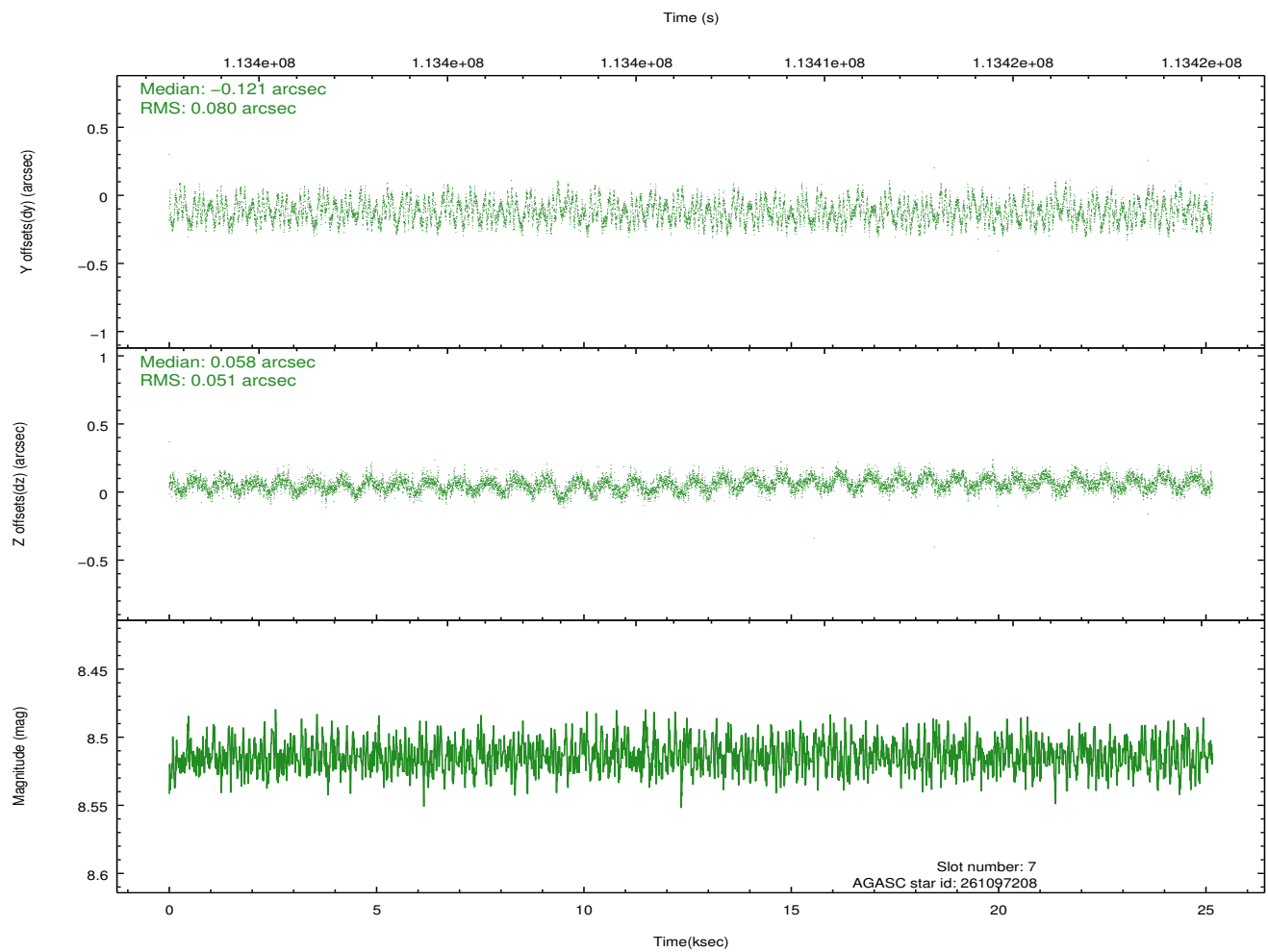
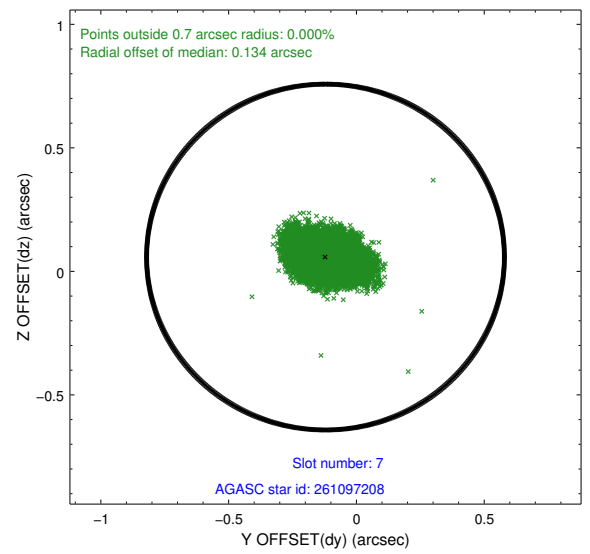
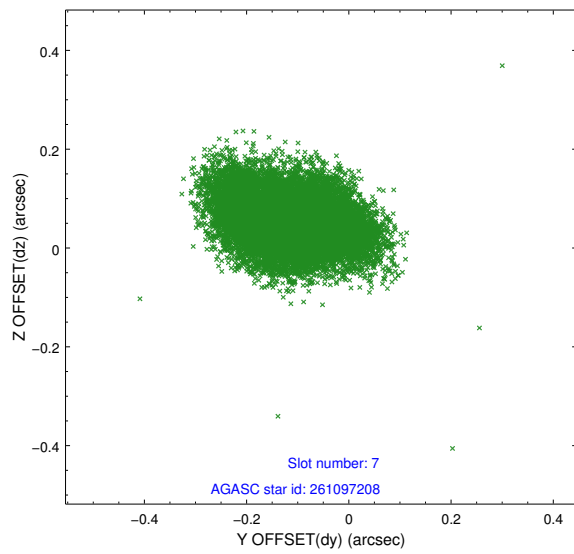
Time (s)



2.4.4 Slot 6

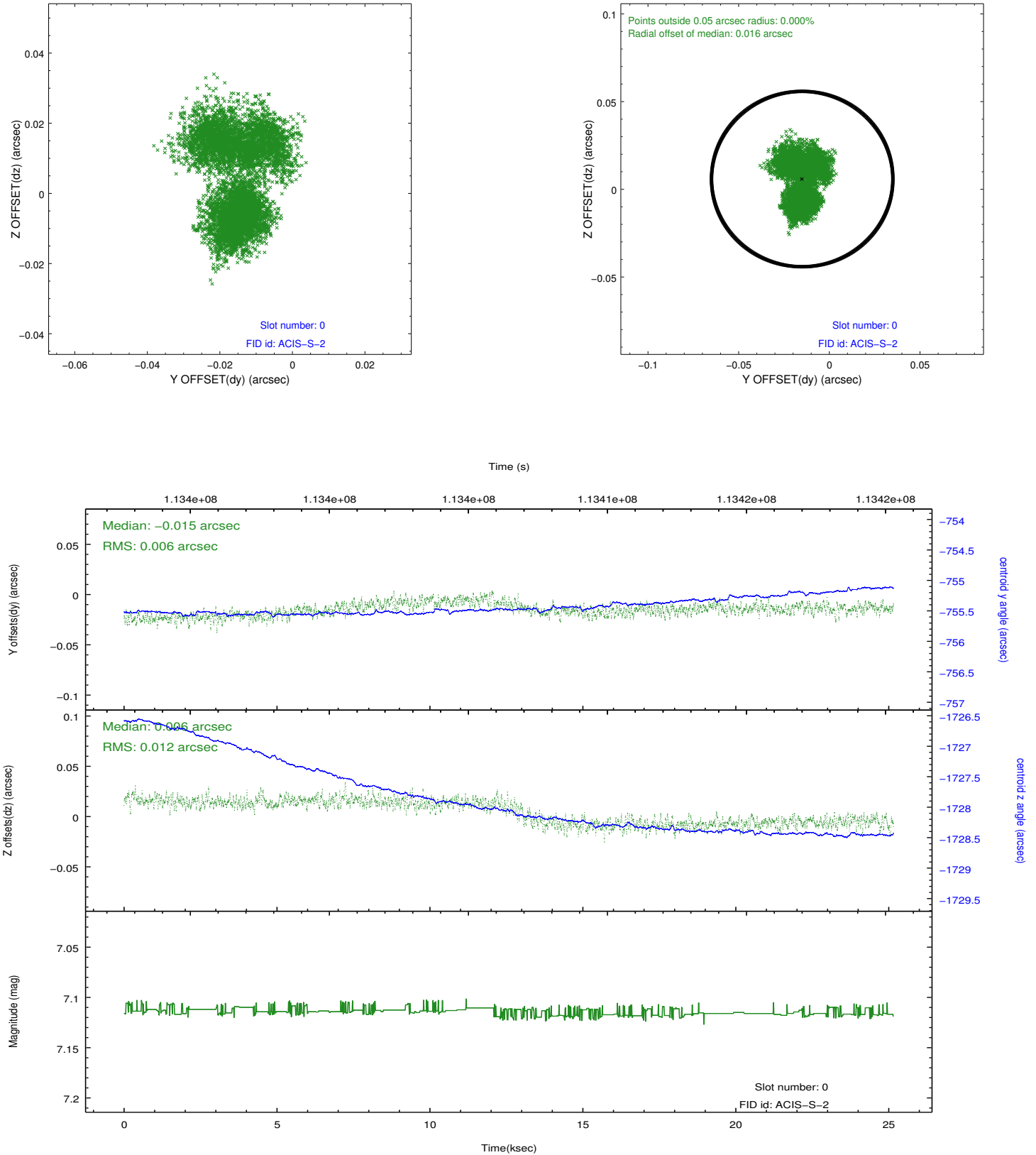


2.4.5 Slot 7

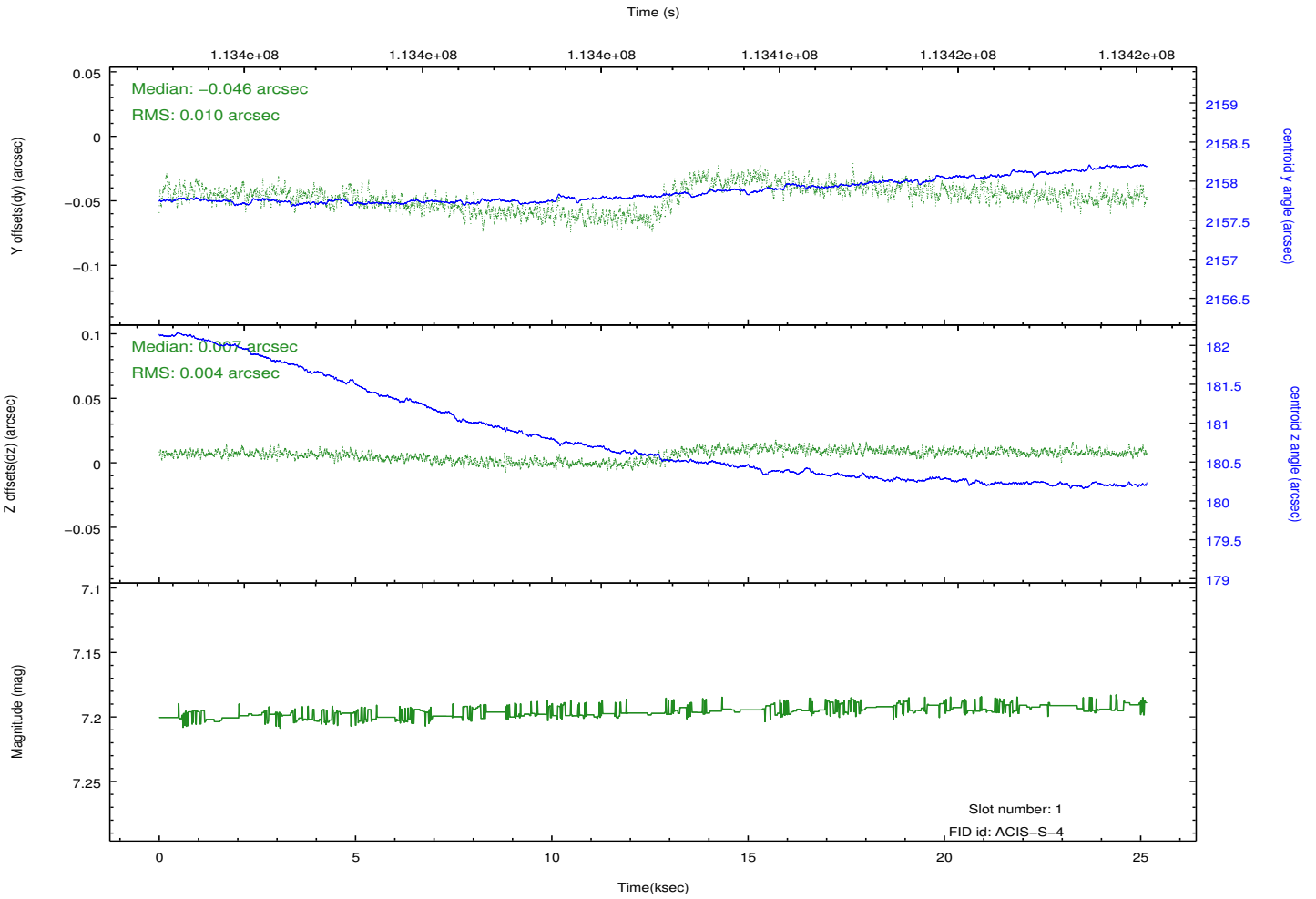
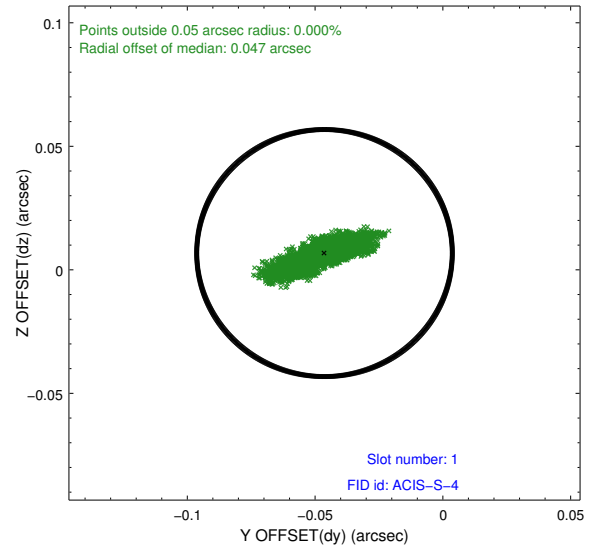
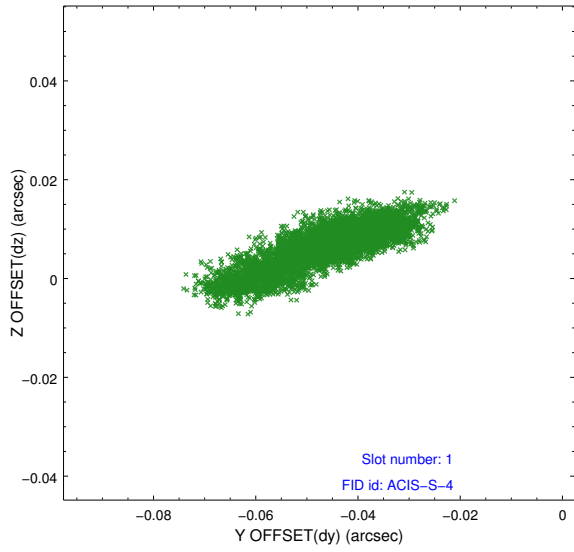


2.5 FID Slots

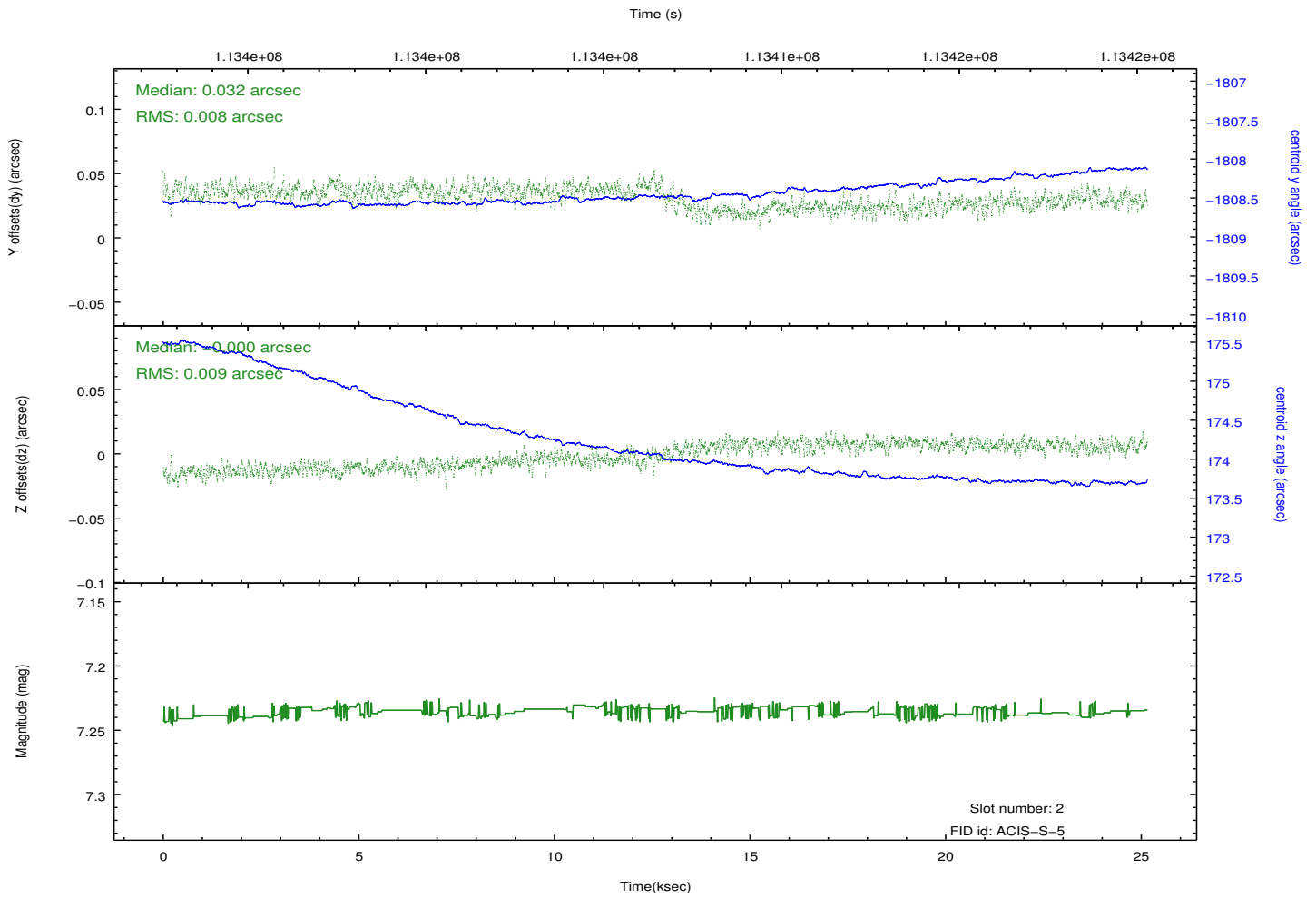
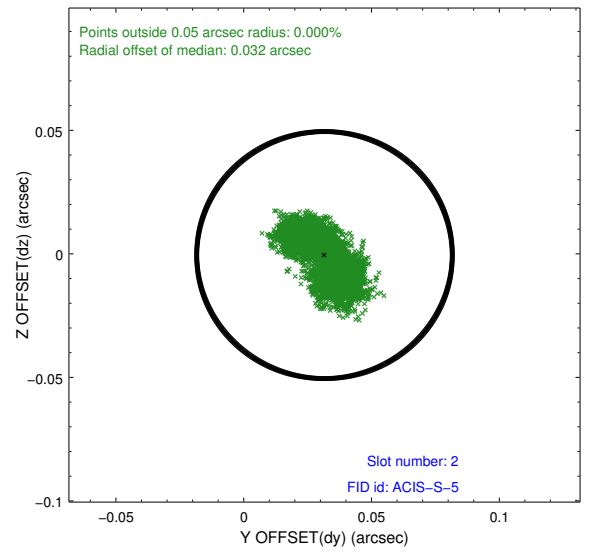
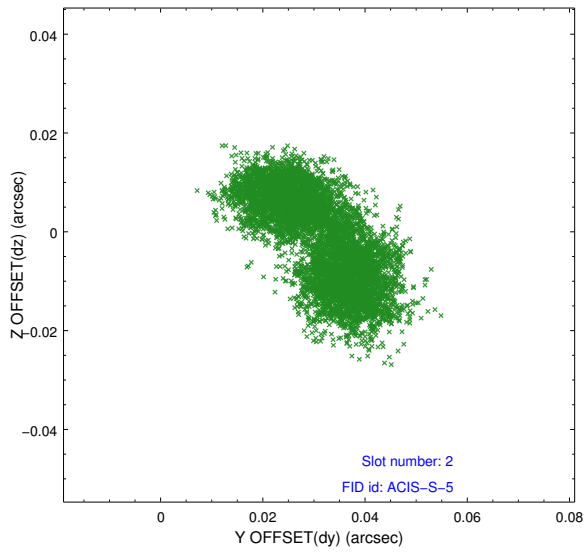
2.5.1 Slot 0



2.5.2 Slot 1



2.5.3 Slot 2



A Summary

A.1 Status

V&V Scientist	Jen Lauer
V&V Date (YYYY-MM-DD)	2012.09.25
V&V Edition	1
V&V Disposition and Status	OK
V&V Charge Time	25.155

A.2 Comments