

V&V Reference Report

L2 ASCDS Version : 8.4.5

Observation 2129 - L2 Version 3
Chandra X-Ray Center

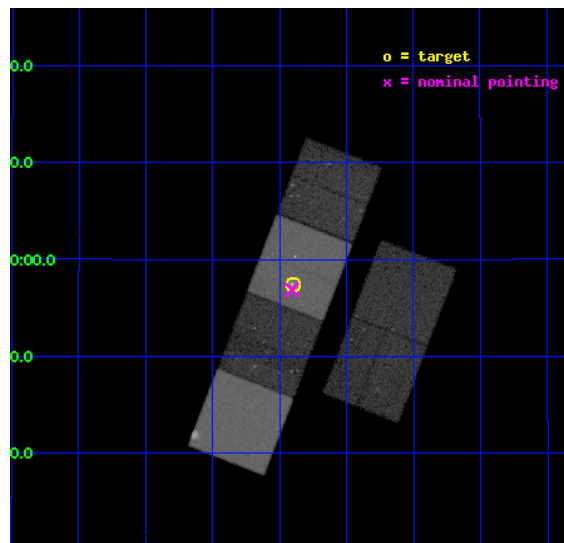
L2 Processing Date : Sep 6 2012

Contents

1	Front	2
2	OBI	3
2.1	OBI	3
2.1.1	Images	3
2.1.2	Bias	3
2.1.3	Parameters	4
2.1.4	Events	4
2.2	Compared Parameters	5
2.3	Aspect	6
2.4	Star Slots	9
2.4.1	Slot 3	9
2.4.2	Slot 4	10
2.4.3	Slot 5	11
2.4.4	Slot 6	12
2.4.5	Slot 7	13
2.5	FID Slots	14
2.5.1	Slot 0	14
2.5.2	Slot 1	15
2.5.3	Slot 2	16
A	Summary	17
A.1	Status	17
A.2	Comments	17

1 Front

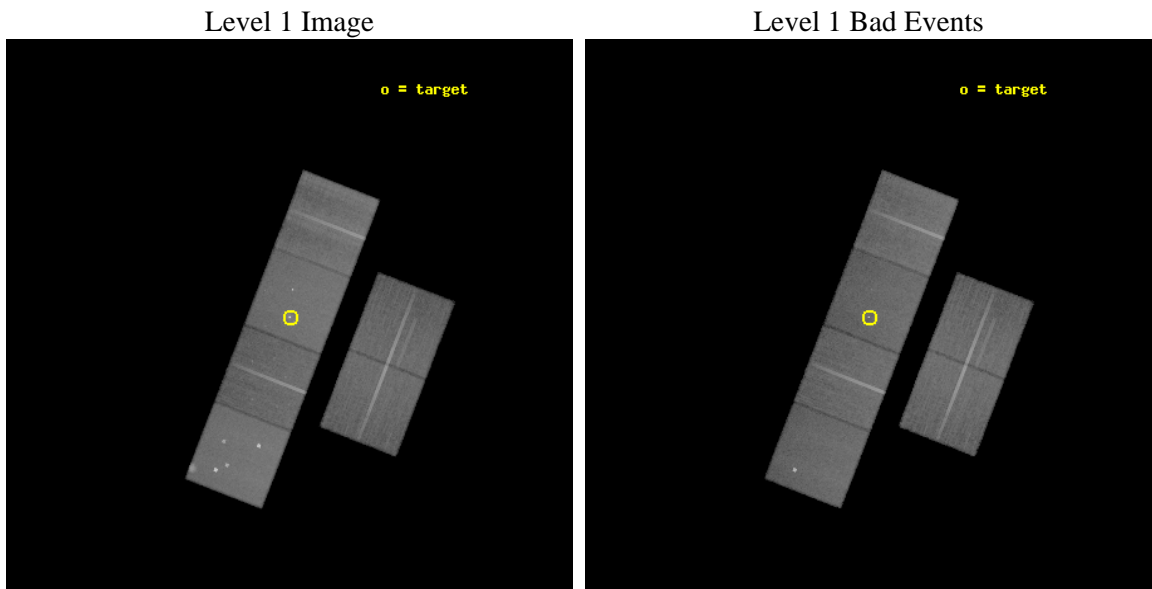
seq_num	700319	Sequence number
obs_id	2129	Observation id
title	INVERSE COMPTON SCATTERING IN QUASAR RADIO LOBES AND THE SPECTRUM OF RELATIVISTIC ELECTRONS	Proposal title
observer	Dr. Gianfranco Brunetti	Principal investigator
object	3C 47	Source name
dtcycle	0	
cycle	P	events from which exps? Prim/Second/Both
ra_targ	24.1	Observer's specified target RA [deg]
dec_targ	20.9575	Observer's specified target Dec [deg]
ra_nom	24.10197885965	Nominal RA [deg]
dec_nom	20.947853804915	Nominal Dec [deg]
roll_nom	291.16585208594	Nominal Roll [deg]
revision	3	Processing version of data
ontime	45094.400041983	Sum of GTIs [s]
livetime	44523.387596063	Livetime [s]
ontime2	45091.159181431	Sum of GTIs [s]
ontime3	45091.159081742	Sum of GTIs [s]
ontime5	45094.400041983	Sum of GTIs [s]
ontime6	45091.159061819	Sum of GTIs [s]
ontime7	45094.400041983	Sum of GTIs [s]
ontime8	45094.400041983	Sum of GTIs [s]
l2events	454878	Number of level 2 events



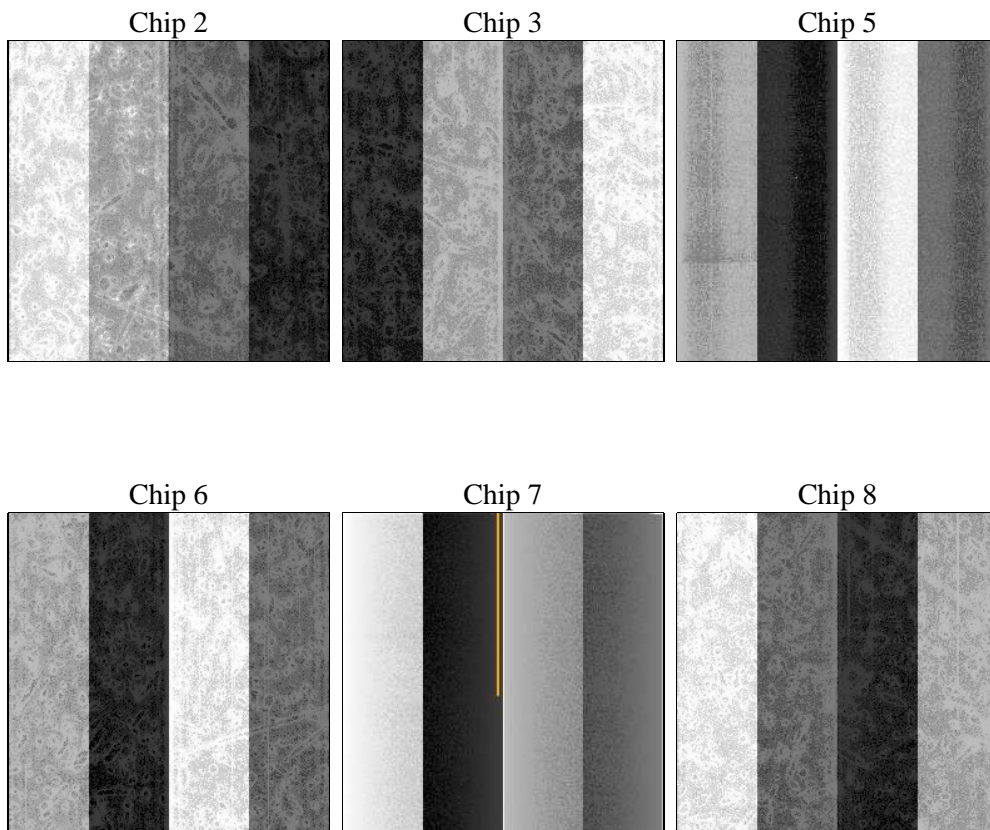
2 OBI

2.1 OBI

2.1.1 Images



2.1.2 Bias



2.1.3 Parameters

obi_num	0	Obi number	sched_exp_time	49600.000000	[s] Scheduled observation exposure time
ascdsver	8.4.5	Processing system revision	ontime	45094.400041983	Sum of GTIs [s]
caldbver	4.5.1.1	 	ontime2	45091.159181431	Sum of GTIs [s]
date	2012-09-06T13:33:42	Date and time of file creation	ontime3	45091.159081742	Sum of GTIs [s]
revision	3	Processing version of data	ontime5	45094.400041983	Sum of GTIs [s]
			ontime6	45091.159061819	Sum of GTIs [s]
			ontime7	45094.400041983	Sum of GTIs [s]
			ontime8	45094.400041983	Sum of GTIs [s]
			l1events	1988348	Number of level 1 events

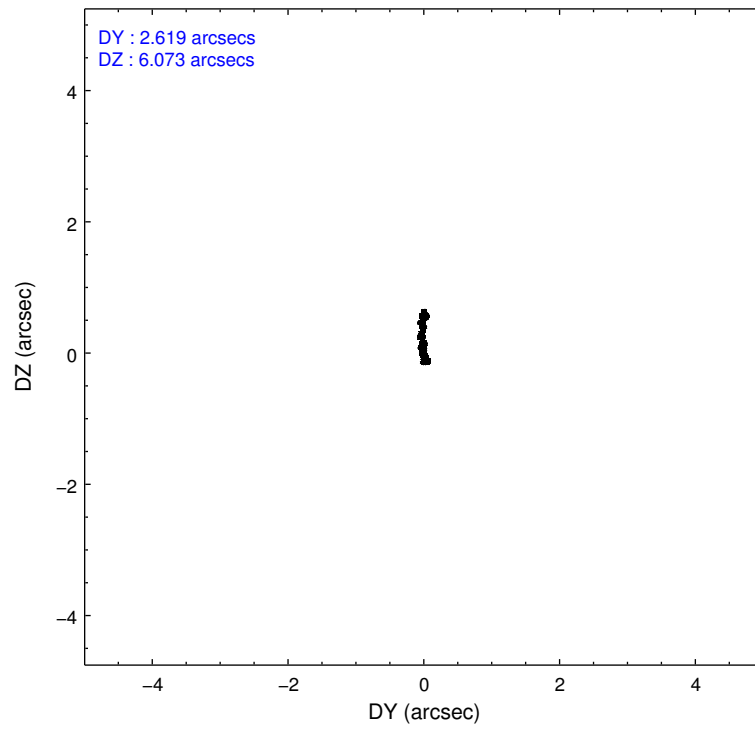
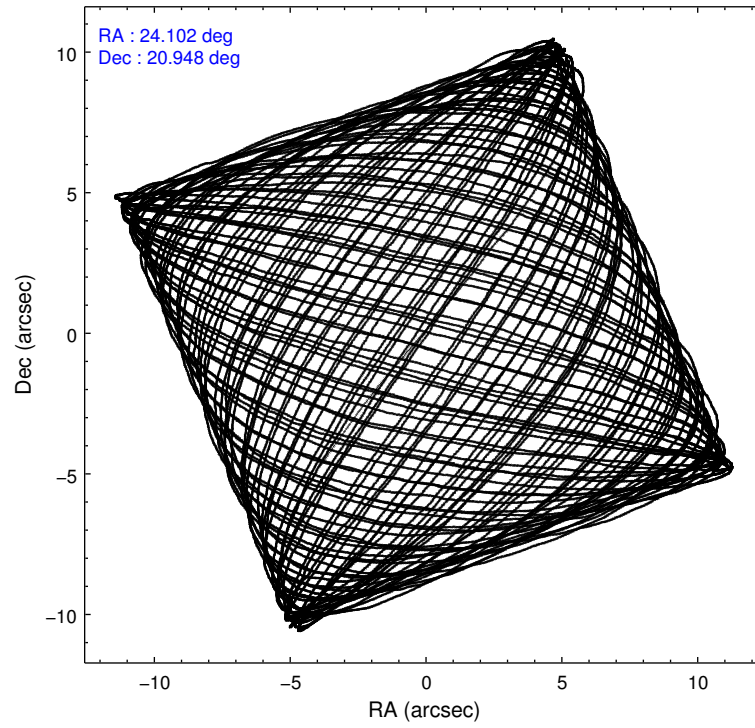
2.1.4 Events

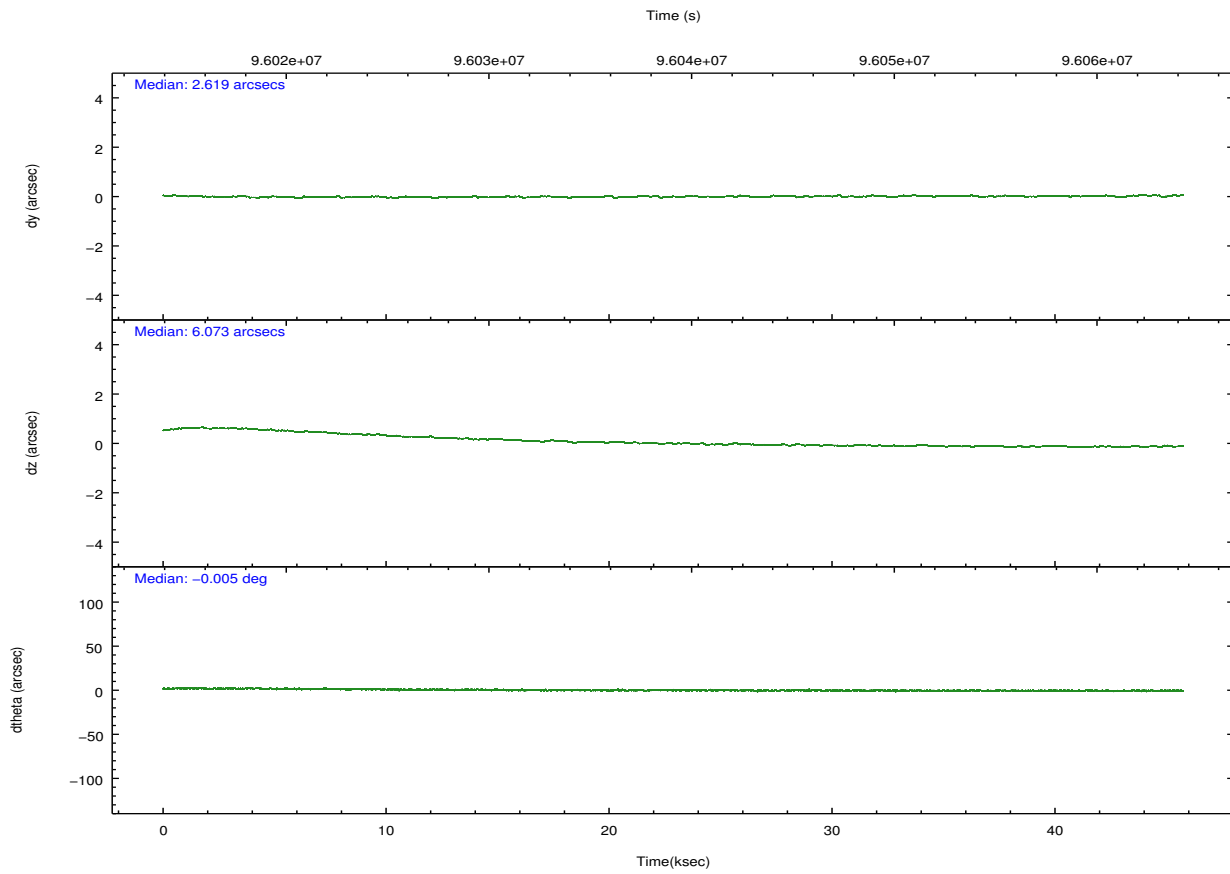
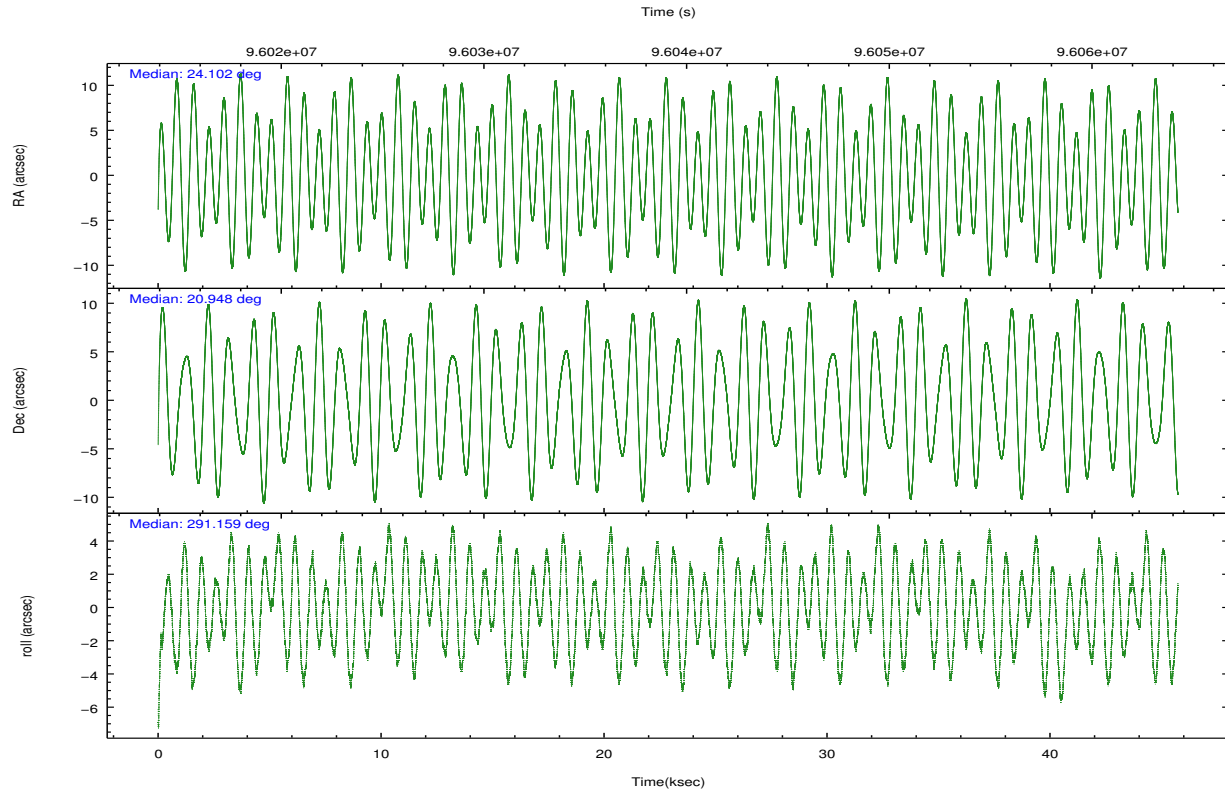
	ccd 2	ccd 3	ccd 5	ccd 6	ccd 7	ccd 8		ccd 2	ccd 3	ccd 5	ccd 6	ccd 7	ccd 8
level 1 events	286659	271008	414798	277836	375097	362950	grade 0 events	14258	13396	34119	14999	18640	29061
rejected events	253849	239584	213041	242980	207831	275526		4%	4%	8%	5%	4%	8%
rejected %	88%	88%	51%	87%	55%	75%	grade 1 events	125	147	446	120	705	237
								0%	0%	0%	0%	0%	0%
							grade 2 events	7099	6561	58200	7140	33342	16747
								2%	2%	14%	2%	8%	4%
							grade 3 events	2836	2945	8602	3189	15287	11230
								0%	1%	2%	1%	4%	3%
							grade 4 events	2919	2883	8005	3059	15044	10135
								1%	1%	1%	1%	4%	2%
							grade 5 events	9405	10250	29016	11397	35149	14545
								3%	3%	6%	4%	9%	4%
							grade 6 events	5701	5644	92845	6471	84964	20253
								1%	2%	22%	2%	22%	5%
							grade 7 events	244316	229182	183565	231461	171966	260742
								85%	84%	44%	83%	45%	71%

2.2 Compared Parameters

Parameter	Planned	Actual	Parameter	Planned	Actual
Instrument	ACIS	ACIS	Obspar format version number	7	7
Detector	ACIS-235678	ACIS-235678	Obspar file type	PREDICTED	ACTUAL
Grating	NONE	NONE	Obspar update status	NONE	UPDATED
Data mode	FAINT	FAINT	Number of optional ACIS chips dropped	0	0
Observation mode	POINTING	POINTING	On-chip summing requested	N	N
[deg] Pointing RA	24.079028	24.10197885964957	Subarray requested	NONE	NONE
[deg] Pointing Dec	20.964790	20.94785380491474	Alternating exposures requested	N	N
[deg] Pointing Roll	291.017433	291.1658520859379	[s] Primary exposure time	0.000000	3.2
[mm] SIM focus pos	-0.684267	-0.6828225247311905			
[mm] SIM defocus	0	0.001444936568705701			
[mm] SIM translation stage pos	-190.132523	-190.1425803651734			
[mm] SIM translation stage offset	0	0.01005778216563158			
[s] Observation start time (MET)	96016800.184000	96015638.589453			
Observation start date	2001-01-16T07:18:56	2001-01-16T07:00:38			
[s] Observation end time (MET)	96066400.184000	96062088.003737			
Observation end date	2001-01-16T21:05:36	2001-01-16T19:54:48			
Read mode	TIMED	TIMED			

2.3 Aspect



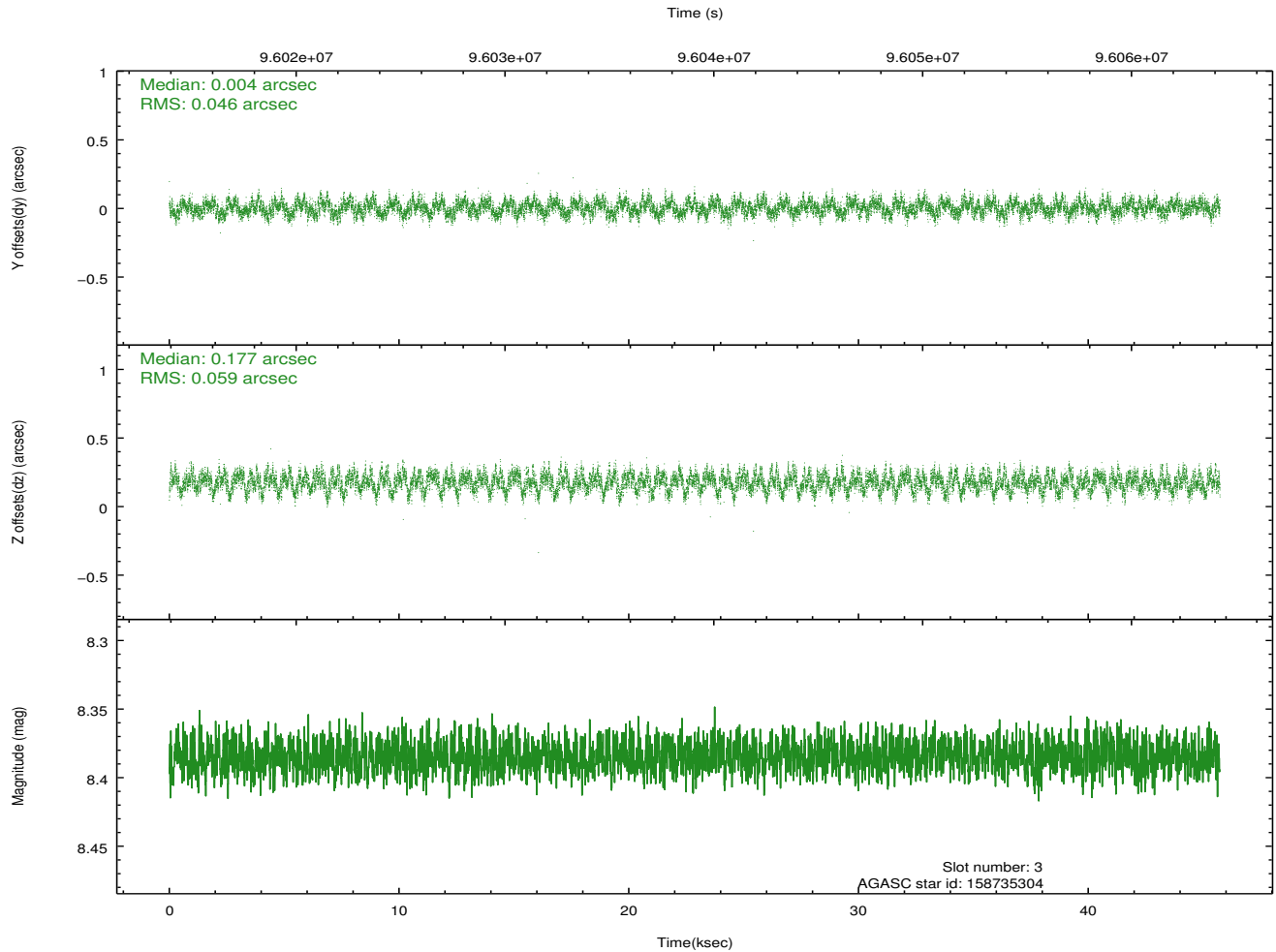
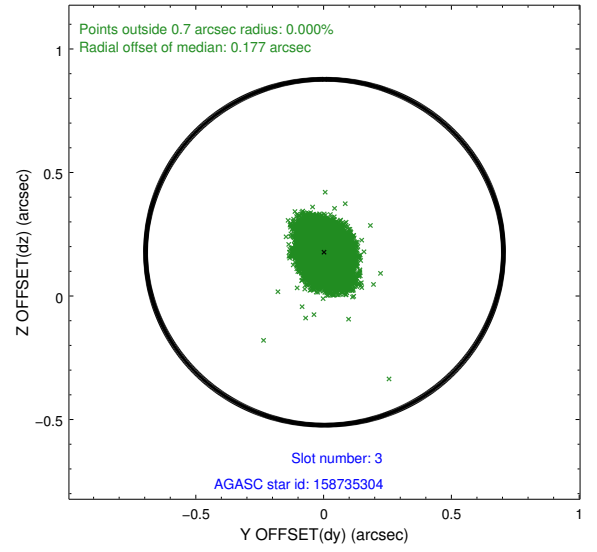
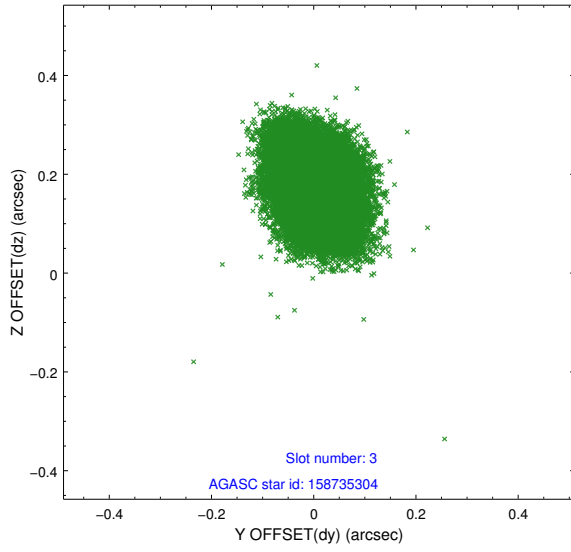


Slot Statistics

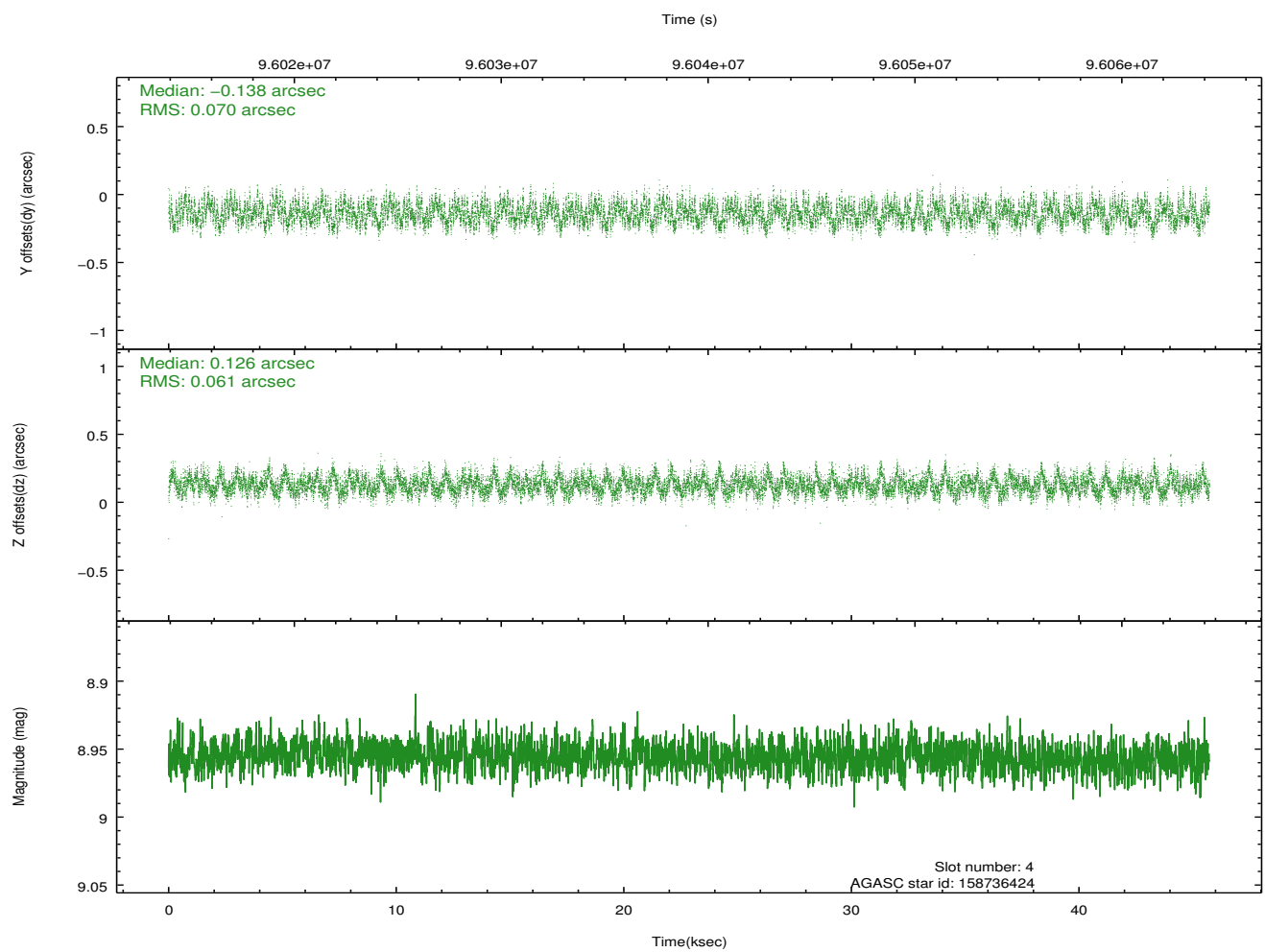
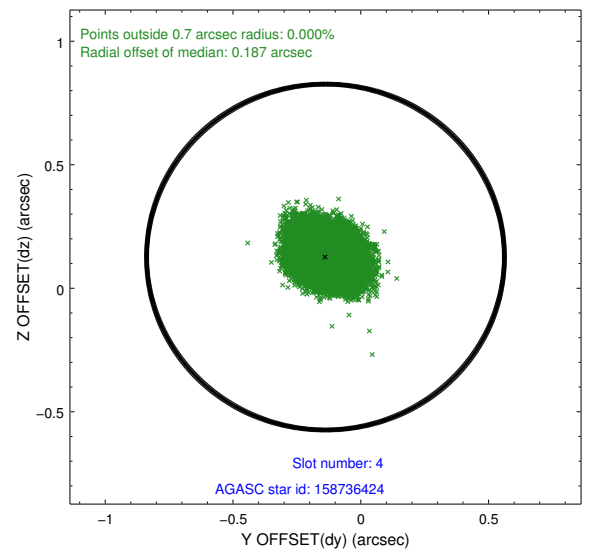
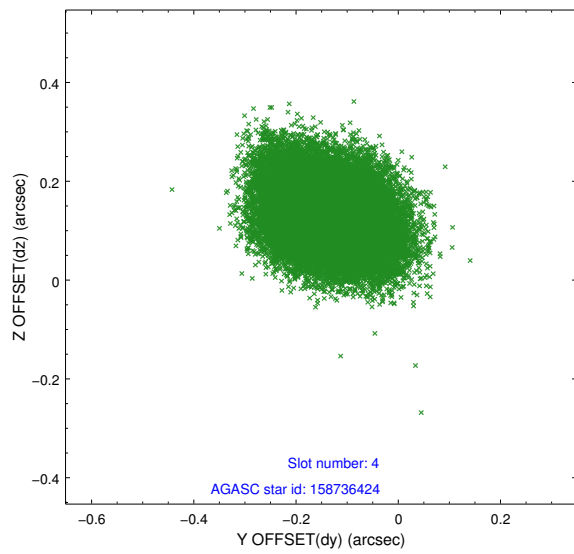
slot	status	id	mag	n_pts	med_dy	med_dz	dr1	dr2	ra	dec	mean_y	mean_z
0	FID	ACIS-S-2	7.11	11154	-0.025	0.017	0.008	0.014	0.000000	0.000000	-755.25	-1727.26
1	FID	ACIS-S-4	7.21	11152	-0.033	0.008	0.007	0.014	0.000000	0.000000	2157.99	181.26
2	FID	ACIS-S-5	7.24	11153	0.027	-0.016	0.007	0.012	0.000000	0.000000	-1808.07	174.85
3	GUIDE	158735304	8.38	22306	0.004	0.177	0.081	0.128	24.483908	21.261111	-510.58	1650.83
4	GUIDE	158736424	8.96	22302	-0.138	0.126	0.101	0.158	24.393339	21.676320	-2015.49	1900.16
5	GUIDE	158736416	8.65	22296	0.203	-0.049	0.073	0.117	24.286827	20.700128	1139.92	311.42
6	GUIDE	157813240	9.01	22304	-0.080	-0.105	0.076	0.122	23.352698	21.152223	-1509.65	-2033.21
7	GUIDE	157811328	8.98	22233	0.011	-0.149	0.082	0.130	23.551617	21.177007	-1350.96	-1378.55

2.4 Star Slots

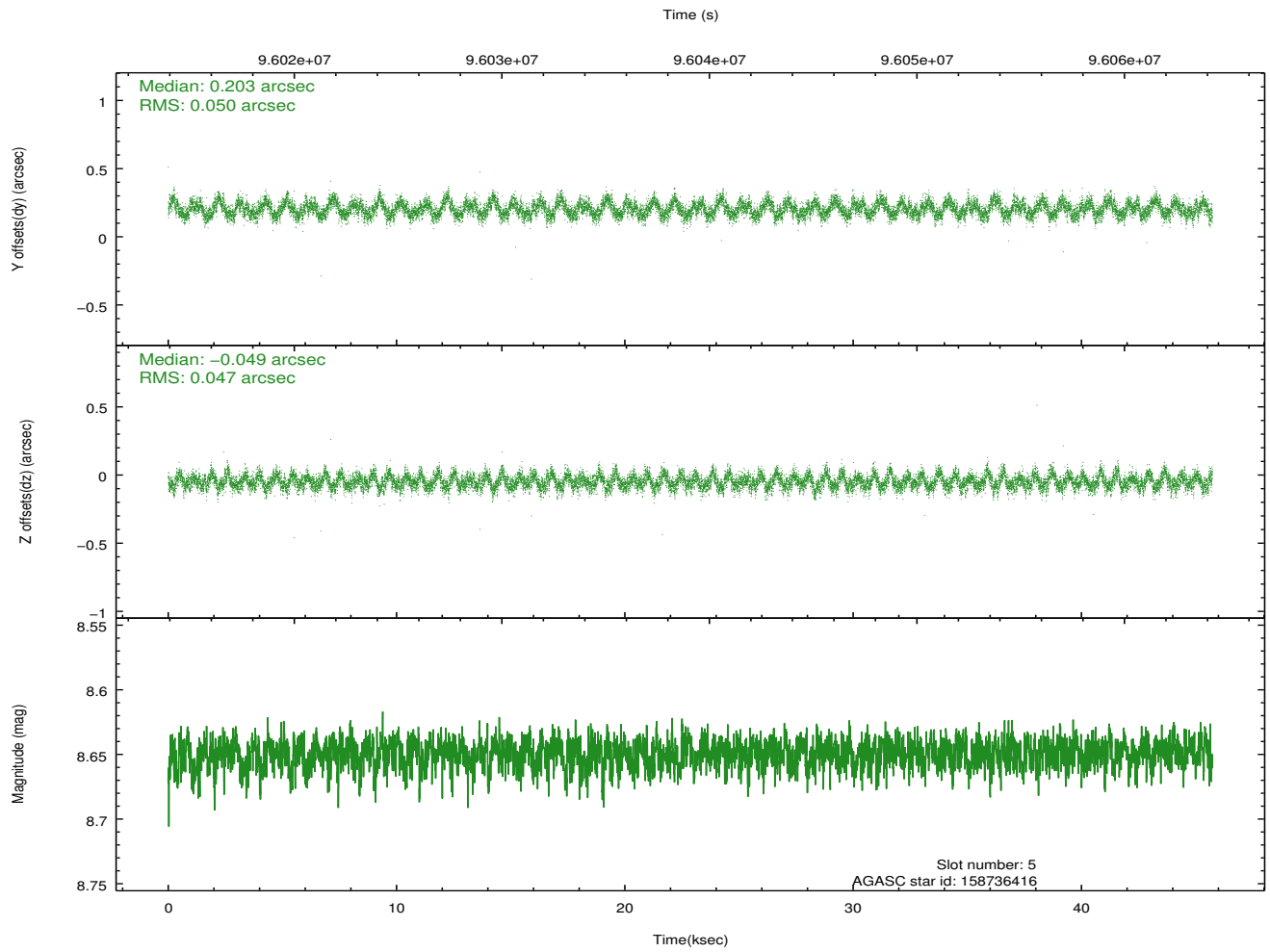
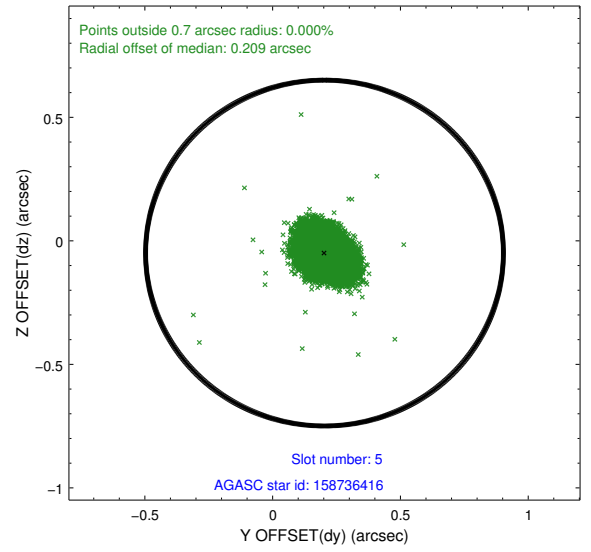
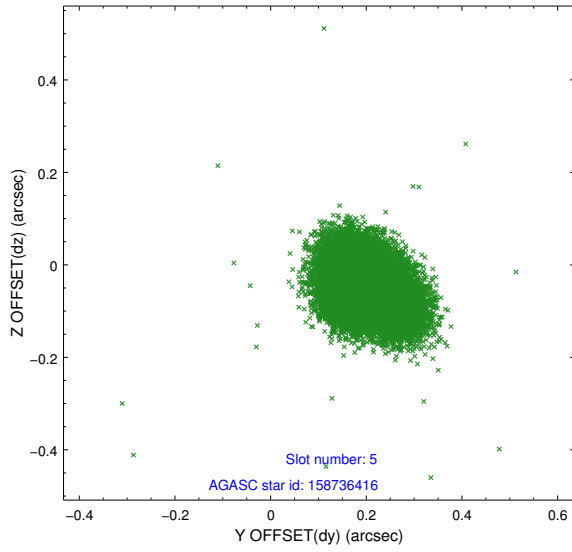
2.4.1 Slot 3



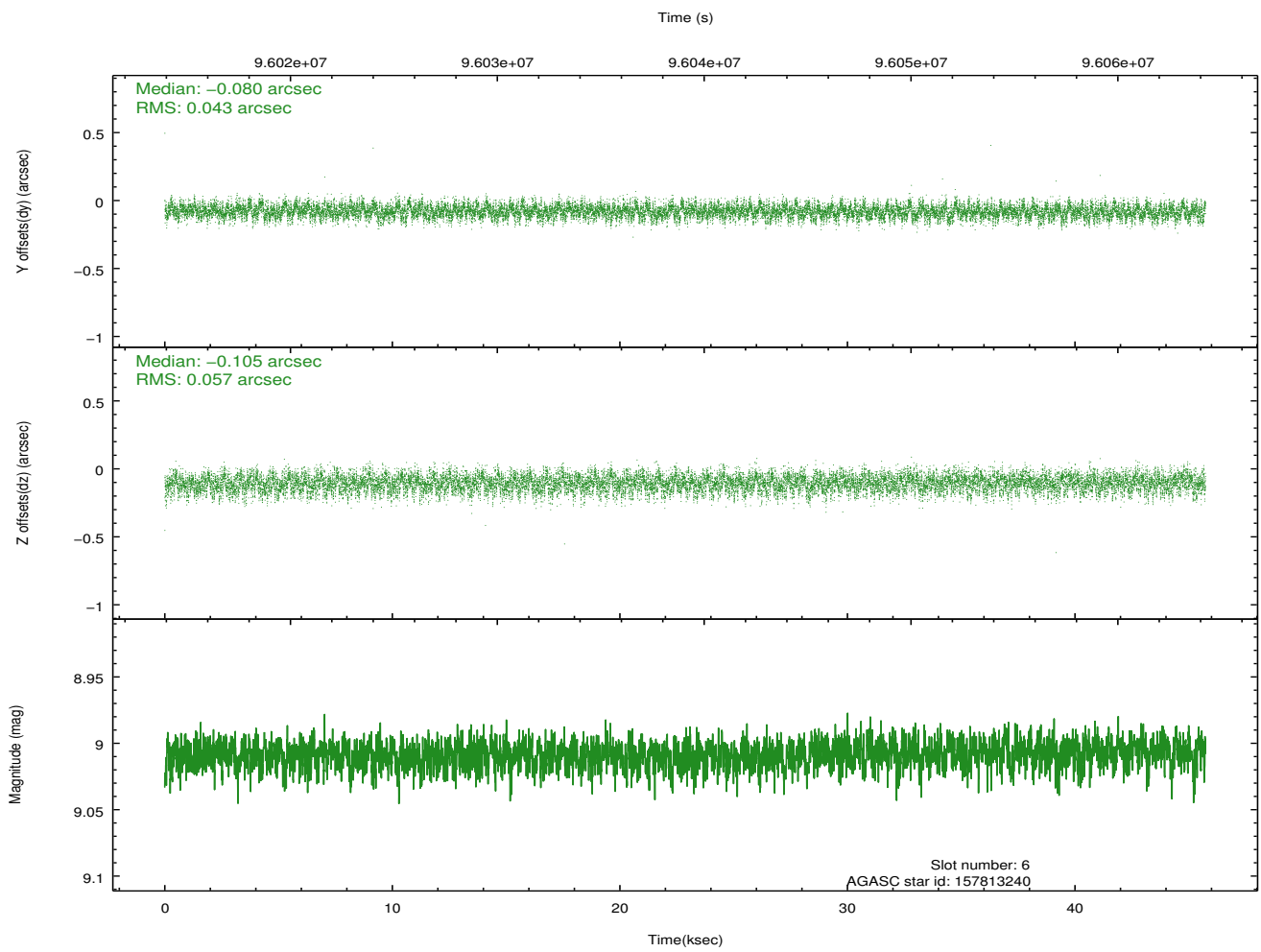
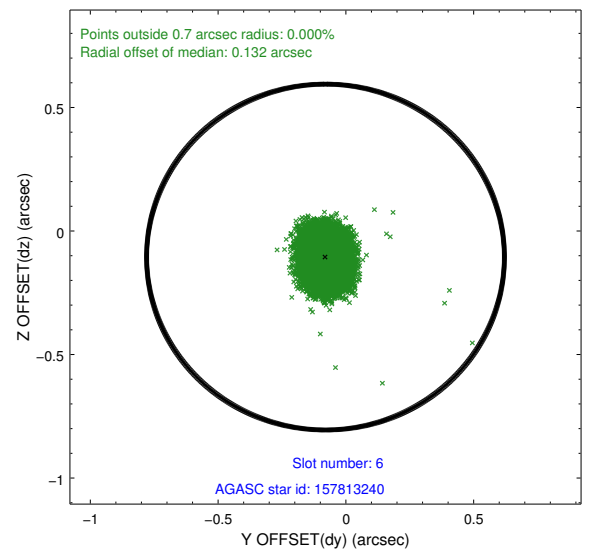
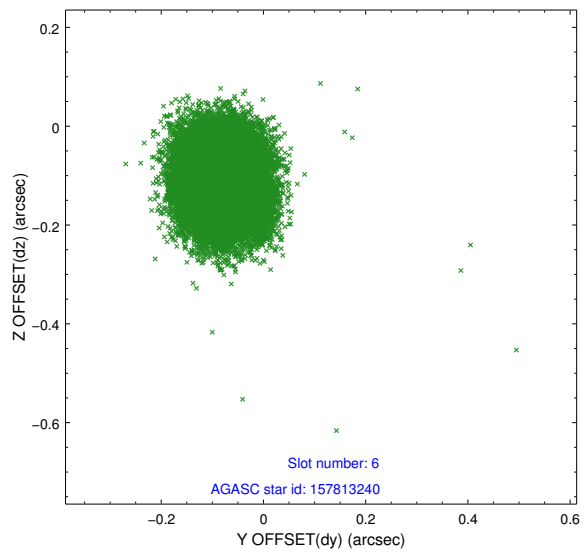
2.4.2 Slot 4



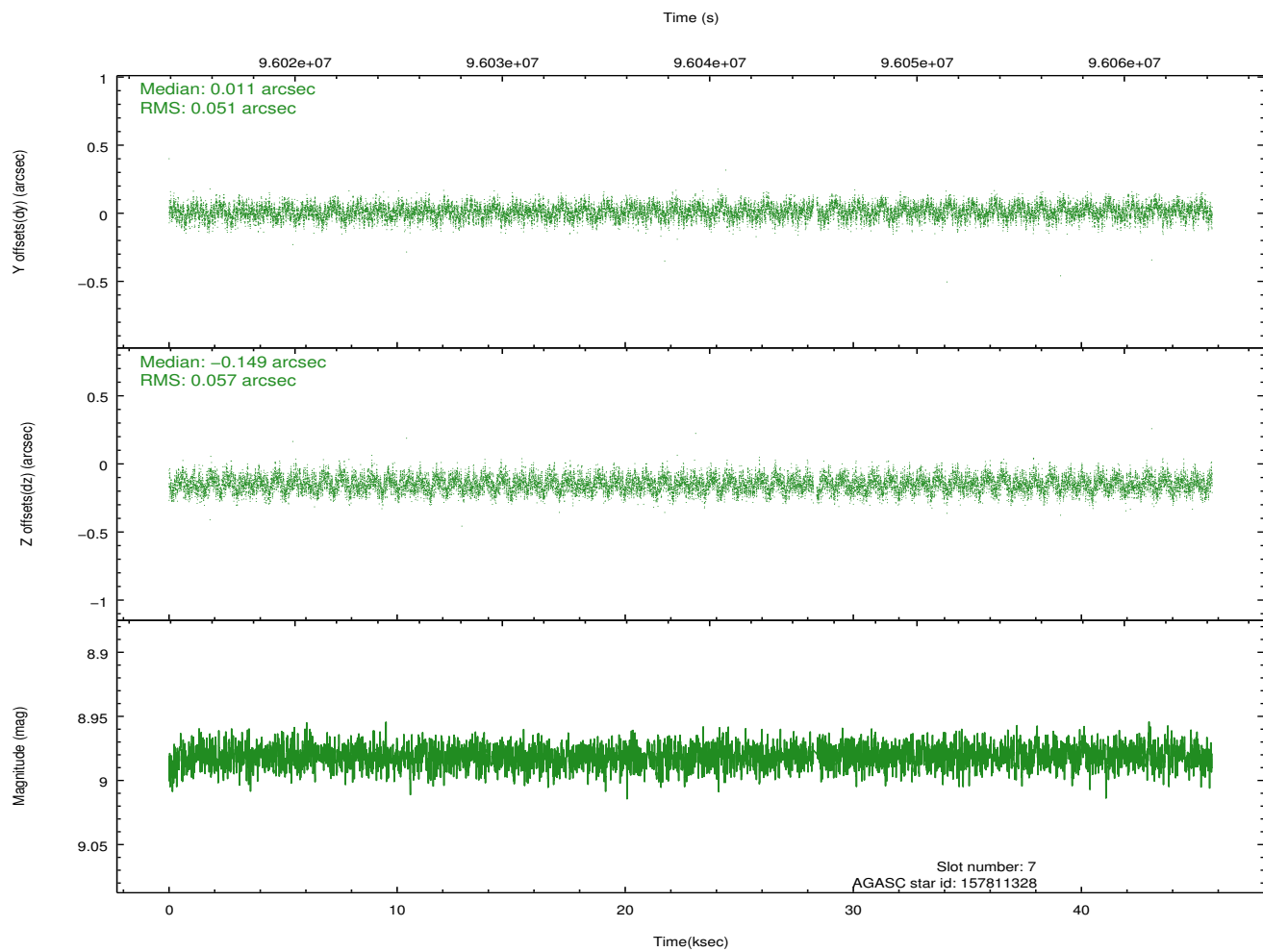
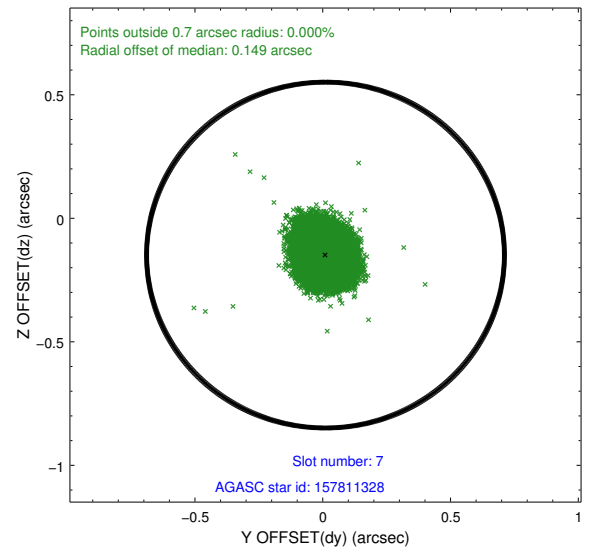
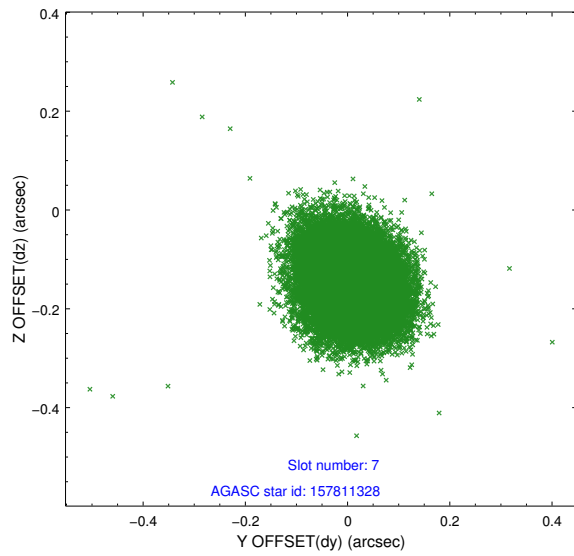
2.4.3 Slot 5



2.4.4 Slot 6

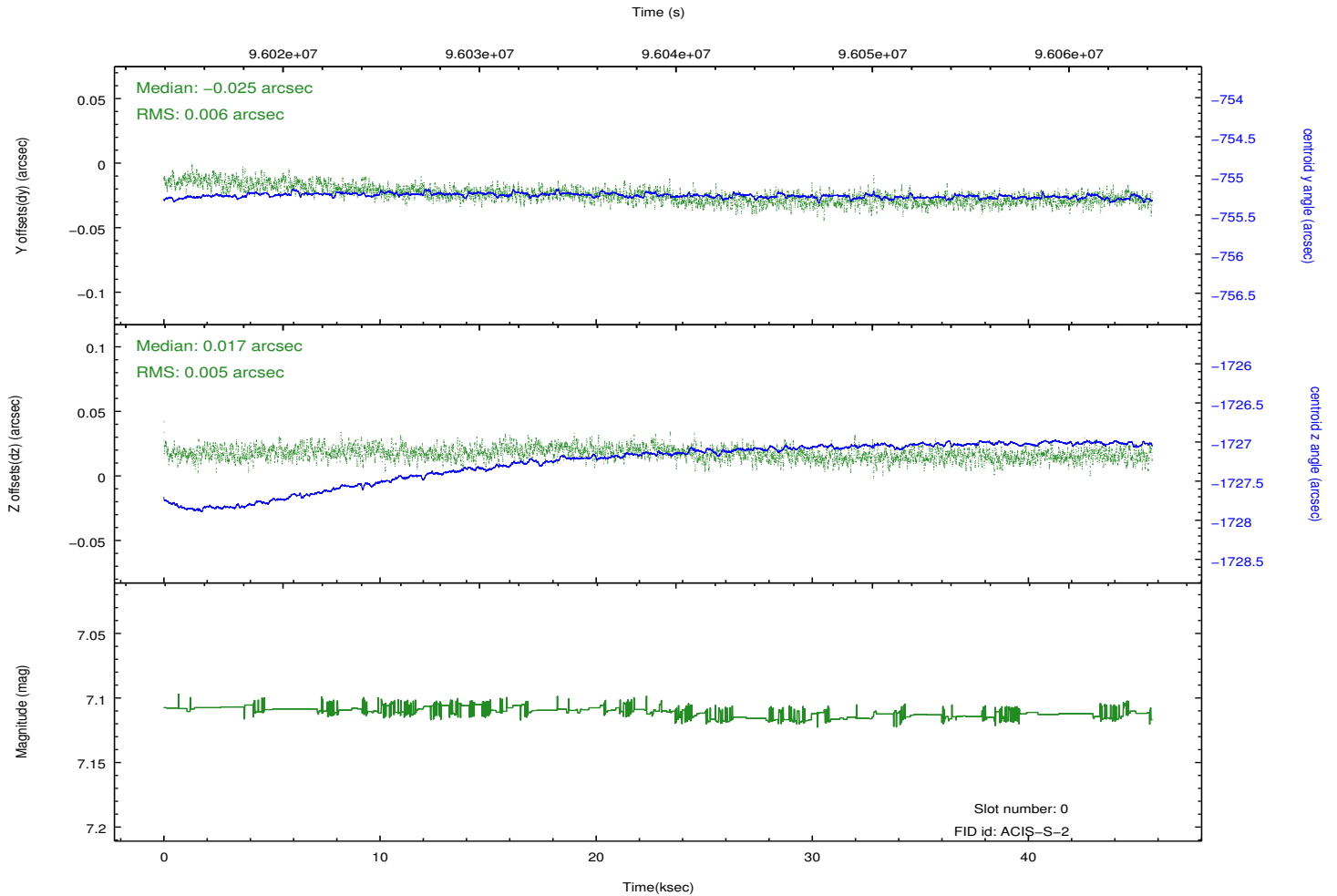
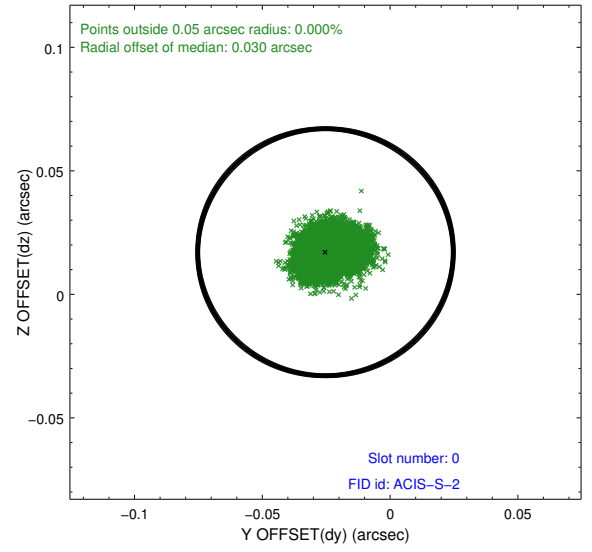
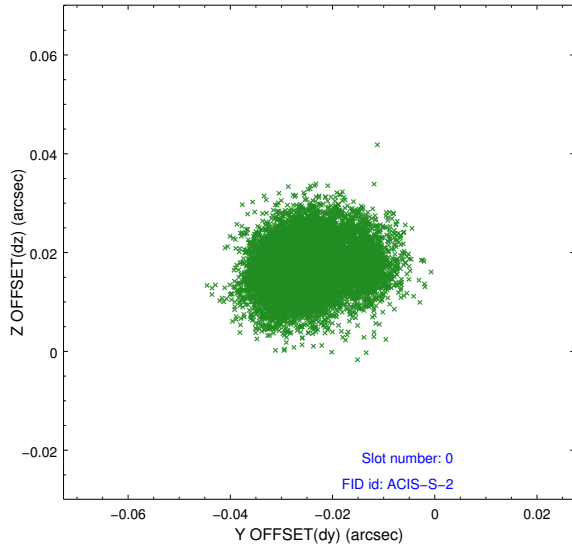


2.4.5 Slot 7

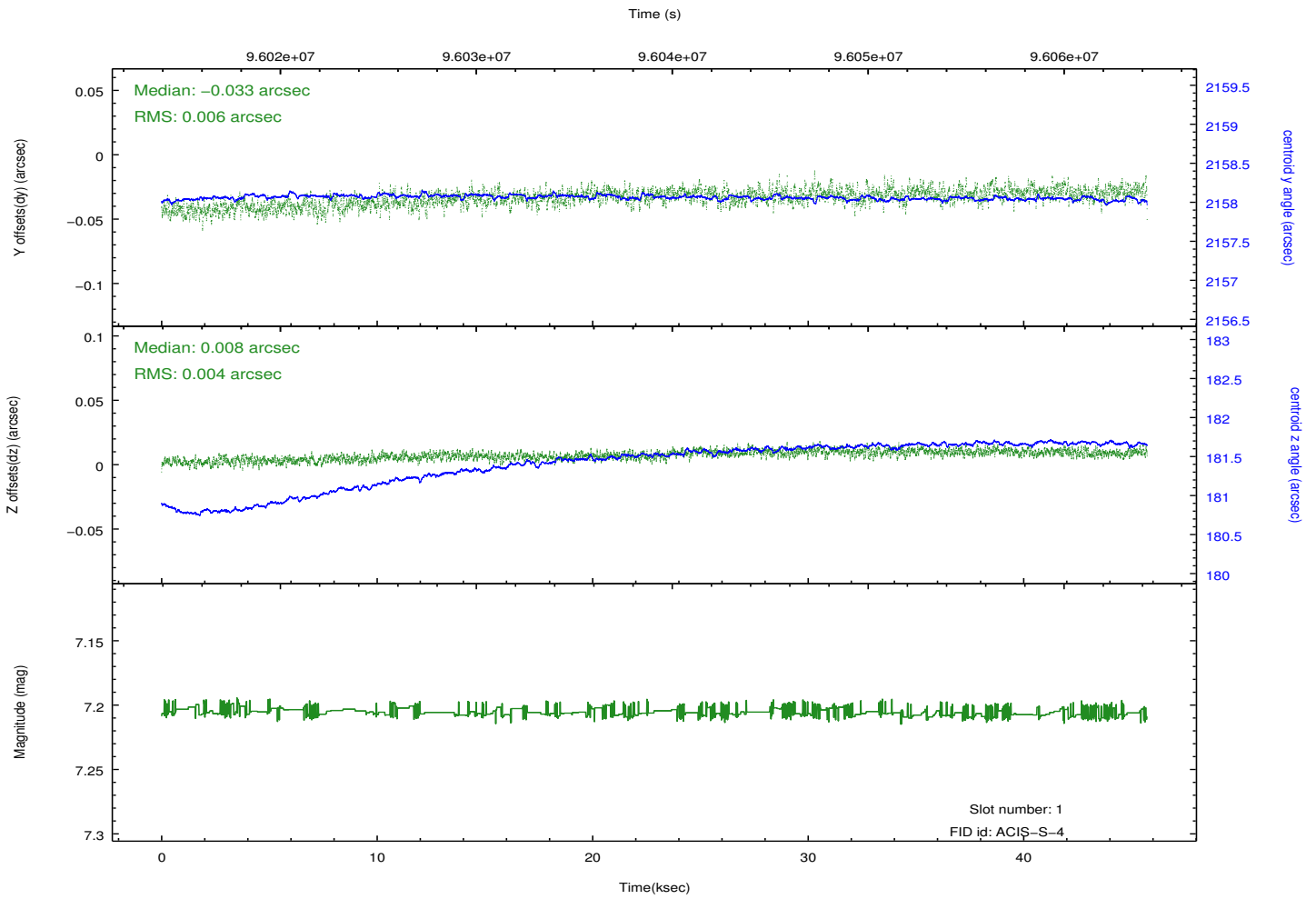
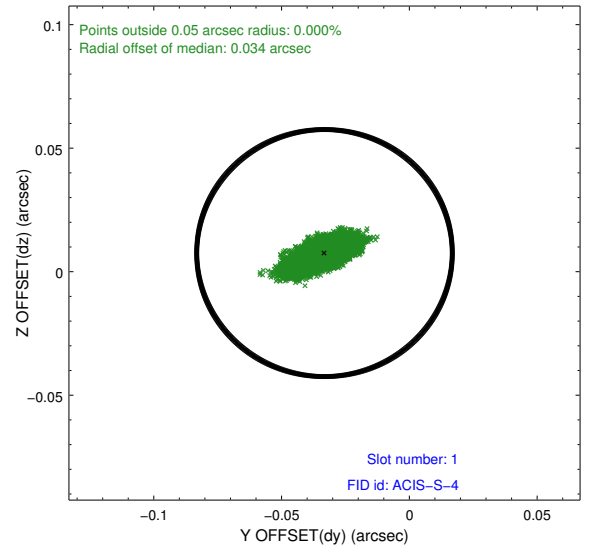
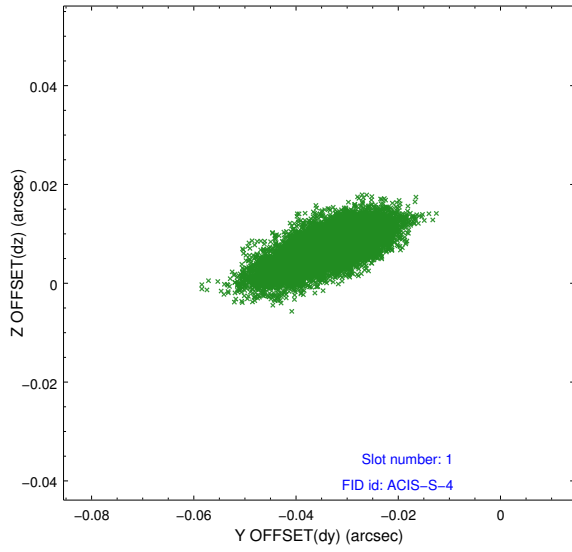


2.5 FID Slots

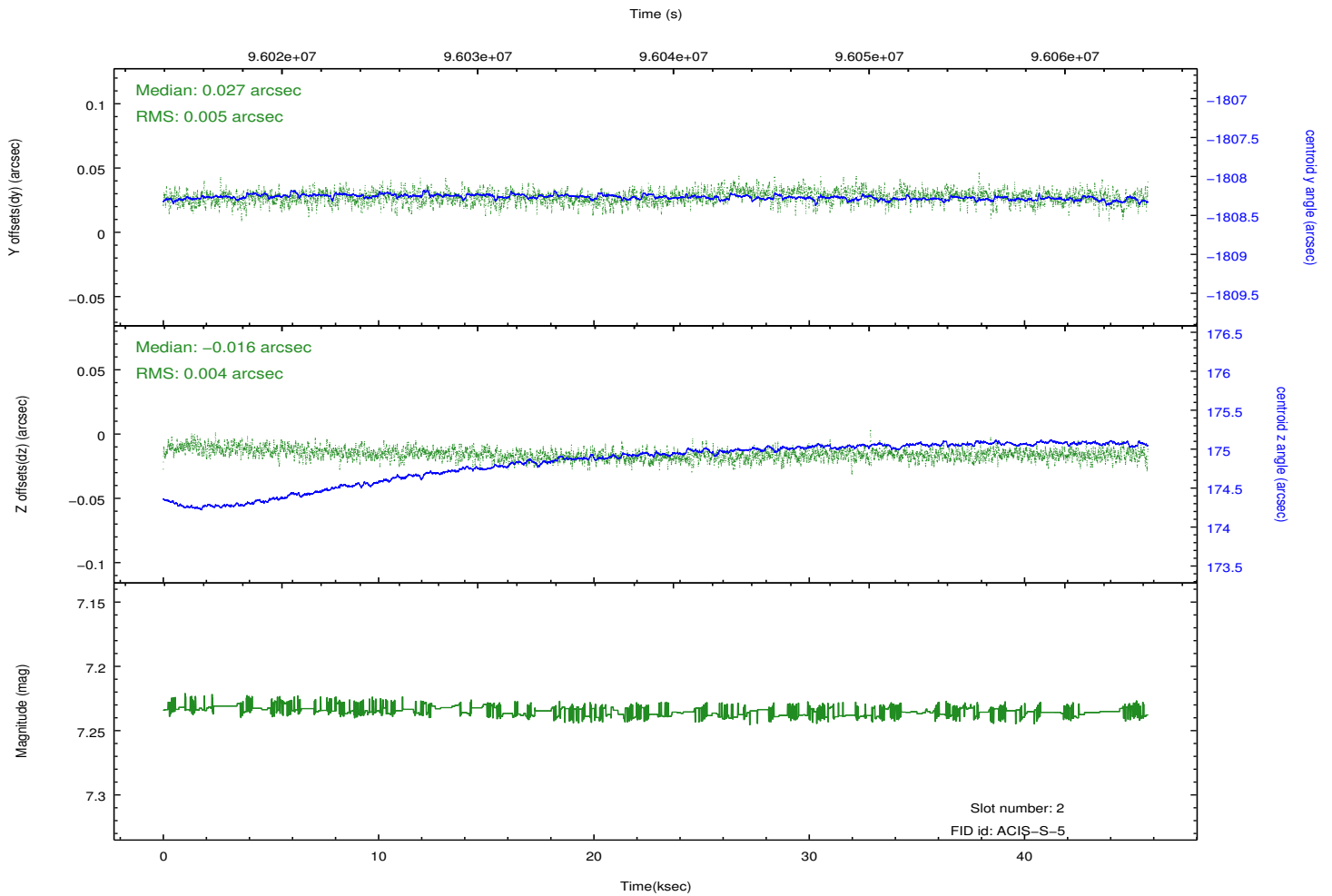
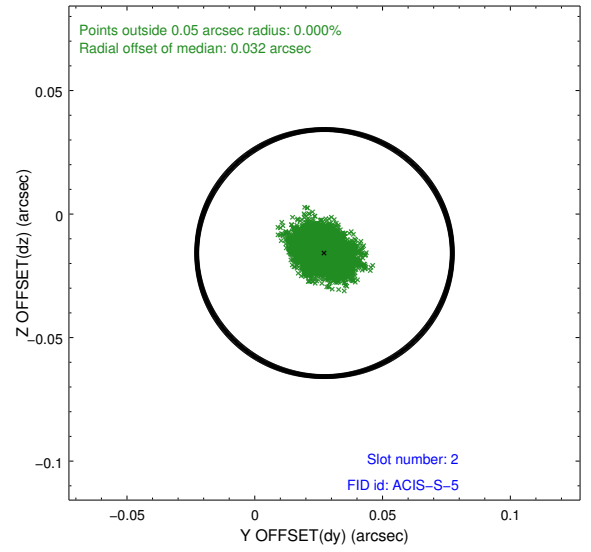
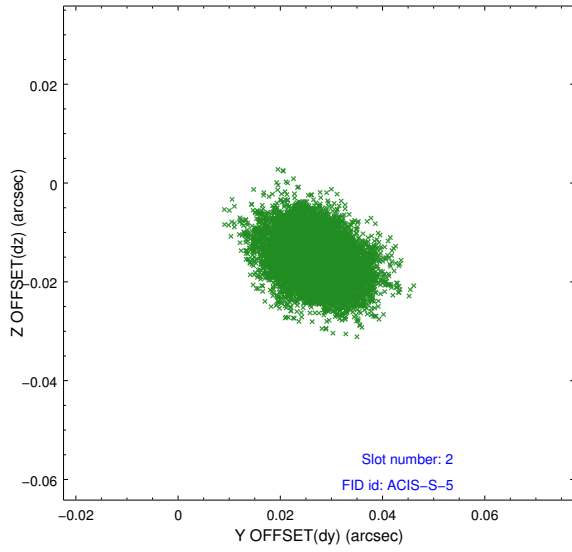
2.5.1 Slot 0



2.5.2 Slot 1



2.5.3 Slot 2



A Summary

A.1 Status

V&V Scientist	Jen Lauer
V&V Date (YYYY-MM-DD)	2012.09.17
V&V Edition	1
V&V Disposition and Status	OK
V&V Charge Time	45.097

A.2 Comments