

V&V Reference Report

L2 ASCDS Version : 8.4.5

Observation 2779 - L2 Version 3
Chandra X-Ray Center

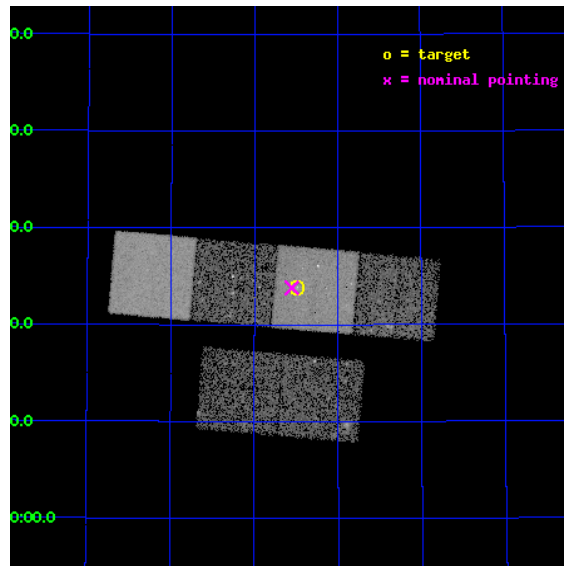
L2 Processing Date : Oct 17 2012

Contents

1	Front	2
2	OBI	3
2.1	OBI	3
2.1.1	Images	3
2.1.2	Bias	3
2.1.3	Parameters	4
2.1.4	Events	4
2.2	Compared Parameters	5
2.3	Aspect	6
2.4	Star Slots	9
2.4.1	Slot 3	9
2.4.2	Slot 4	10
2.4.3	Slot 5	11
2.4.4	Slot 6	12
2.4.5	Slot 7	13
2.5	FID Slots	14
2.5.1	Slot 0	14
2.5.2	Slot 1	15
2.5.3	Slot 2	16
A	Summary	17
A.1	Status	17
A.2	Comments	17

1 Front

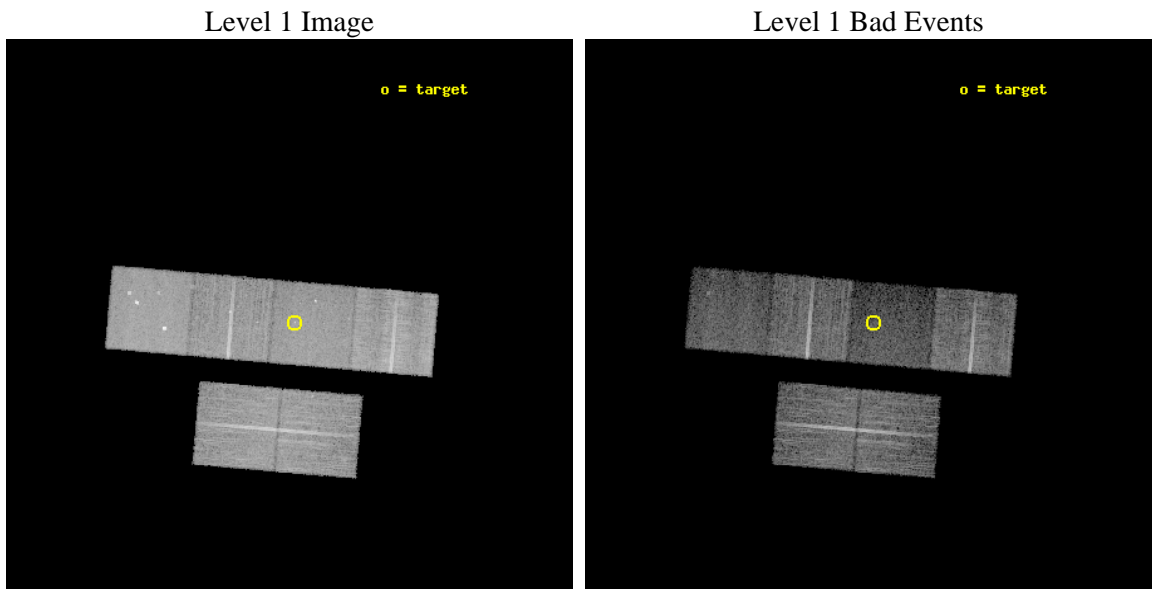
seq_num	500229	Sequence number
obs_id	2779	Observation id
title	NGC5471B: A HYPERNOVA REMNANT CANDIDATE IN M101	Proposal title
observer	Prof. Q. Daniel Wang	Principal investigator
object	NGC5471B	Source name
dtycycle	0	
cycle	P	events from which exps? Prim/Second/Both
ra_targ	211.12125	Observer's specified target RA [deg]
dec_targ	54.398056	Observer's specified target Dec [deg]
ra_nom	211.1377771817	Nominal RA [deg]
dec_nom	54.397143385748	Nominal Dec [deg]
roll_nom	4.9088331082346	Nominal Roll [deg]
revision	3	Processing version of data
ontime	14459.671876699	Sum of GTIs [s]
livetime	14276.574804827	Livetime [s]
ontime2	14459.712916702	Sum of GTIs [s]
ontime3	14459.548756689	Sum of GTIs [s]
ontime5	14459.630836695	Sum of GTIs [s]
ontime6	14459.589796692	Sum of GTIs [s]
ontime7	14459.671876699	Sum of GTIs [s]
ontime8	14459.507716715	Sum of GTIs [s]
l2events	107140	Number of level 2 events



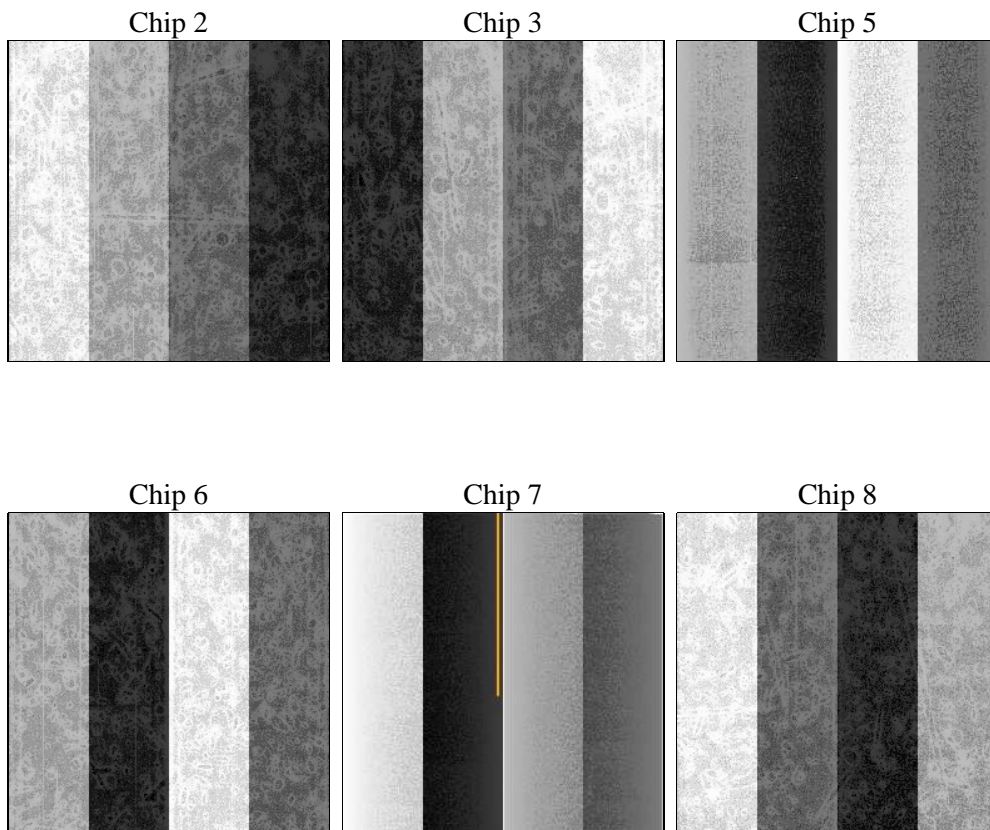
2 OBI

2.1 OBI

2.1.1 Images



2.1.2 Bias



2.1.3 Parameters

obi_num	1	Obi number	sched_exp_time	14500.000000	[s] Scheduled observation exposure time
ascdsver	8.4.5	Processing system revision	ontime	14459.671876699	Sum of GTIs [s]
caldbver	4.5.2	 	ontime2	14459.712916702	Sum of GTIs [s]
date	2012-10-17T00:13:06	Date and time of file creation	ontime3	14459.548756689	Sum of GTIs [s]
revision	3	Processing version of data	ontime5	14459.630836695	Sum of GTIs [s]
			ontime6	14459.589796692	Sum of GTIs [s]
			ontime7	14459.671876699	Sum of GTIs [s]
			ontime8	14459.507716715	Sum of GTIs [s]
			l1events	484447	Number of level 1 events

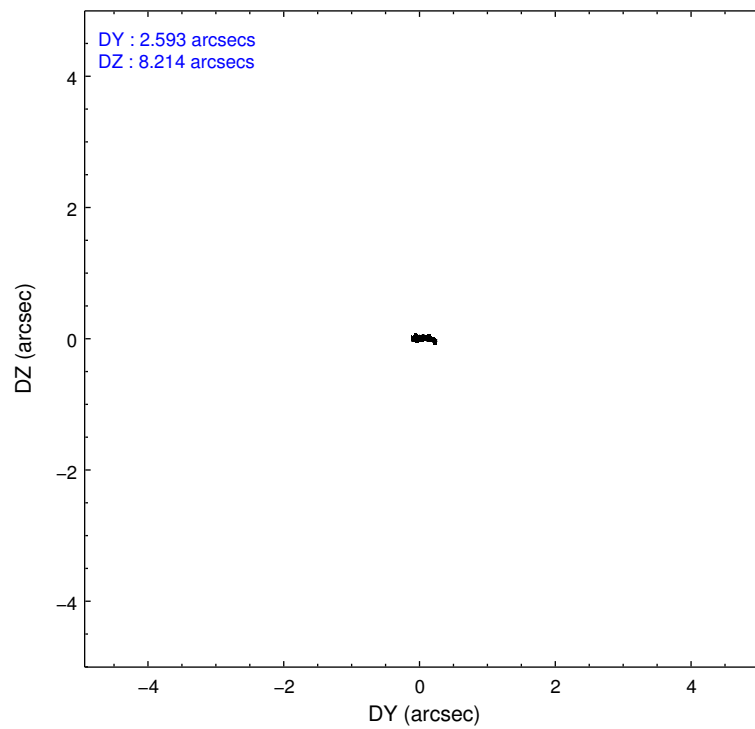
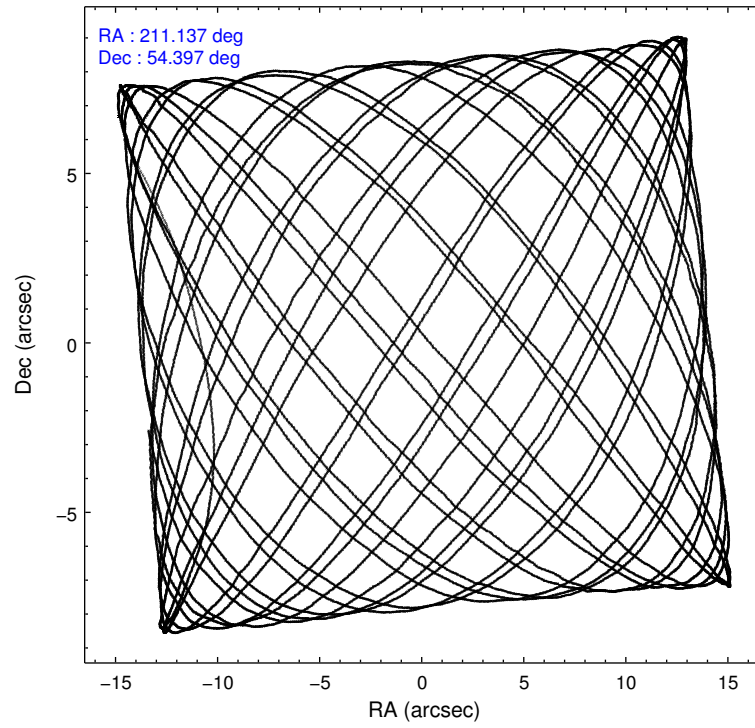
2.1.4 Events

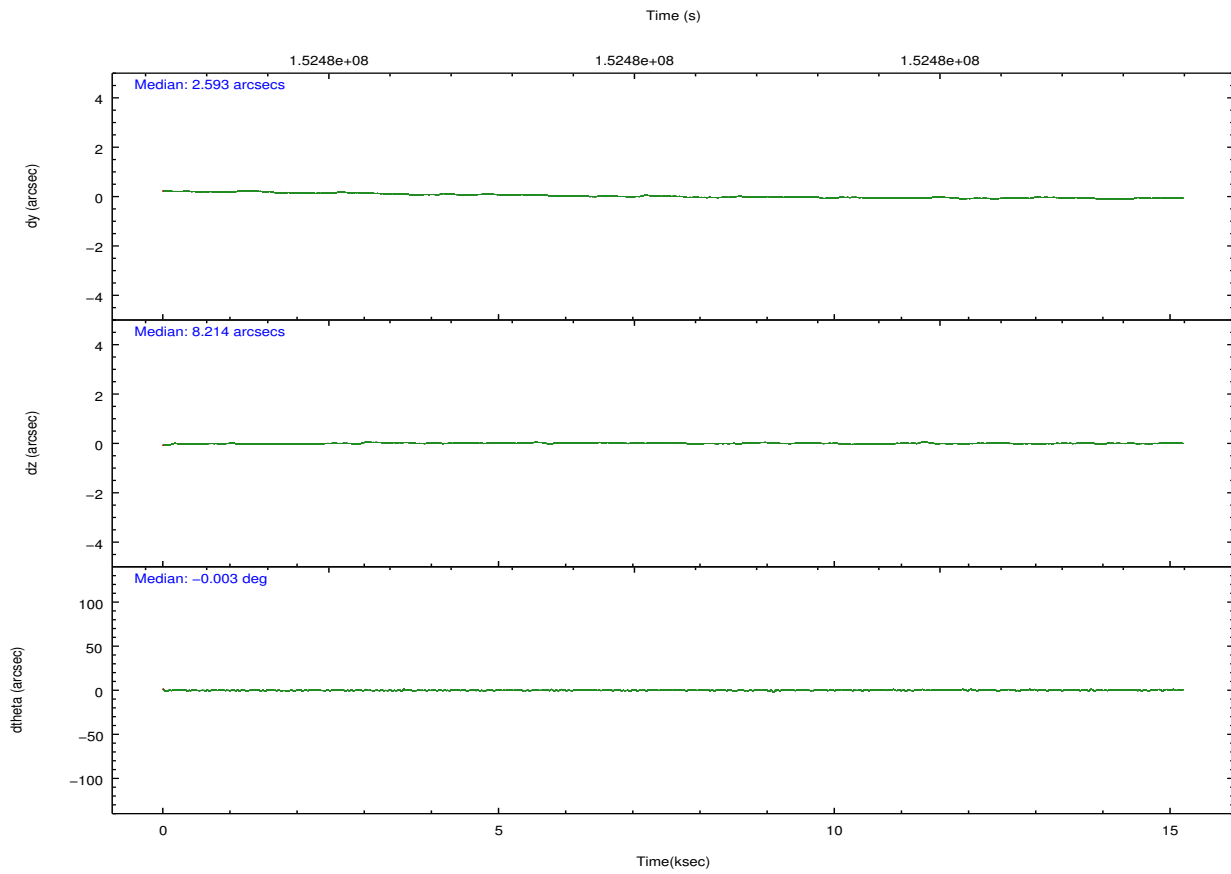
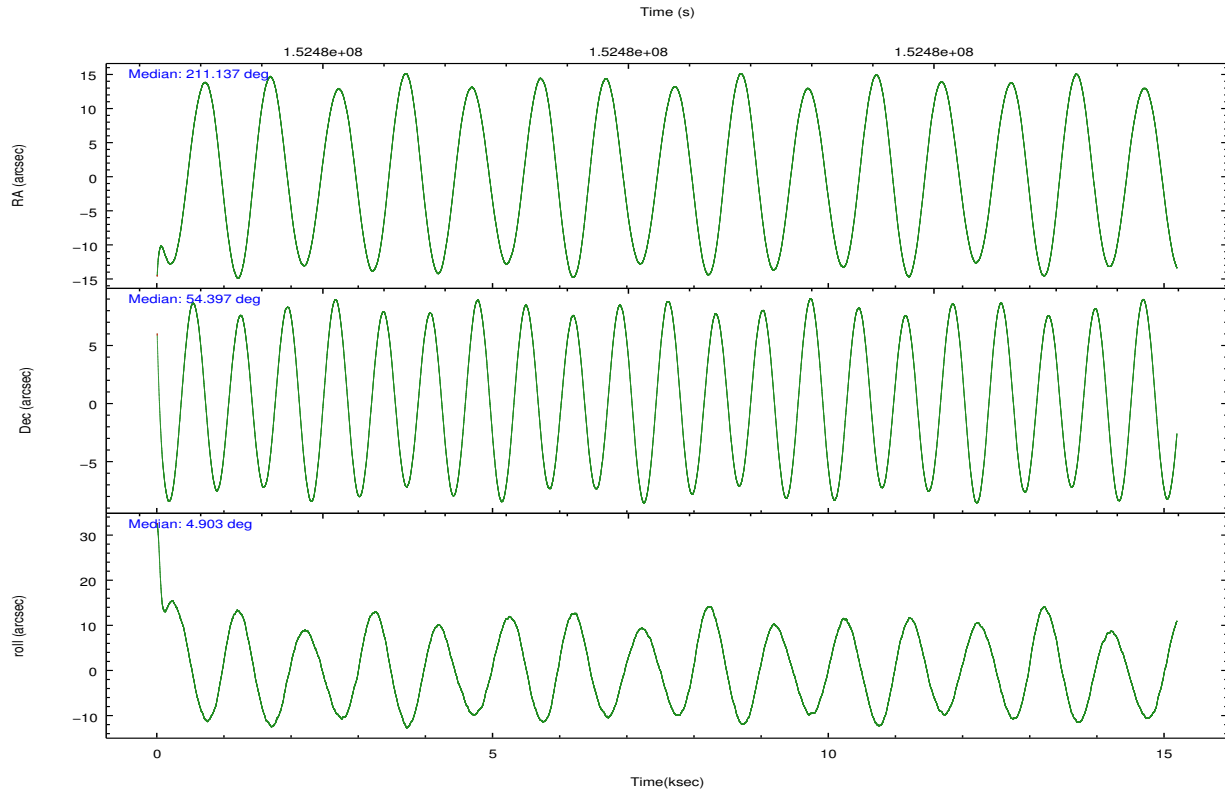
	ccd 2	ccd 3	ccd 5	ccd 6	ccd 7	ccd 8		ccd 2	ccd 3	ccd 5	ccd 6	ccd 7	ccd 8
level 1 events	78396	74215	92521	73962	70679	94674	grade 0 events	2787	2924	8729	3323	4356	7316
rejected events	71276	67131	41092	65758	33698	70406		3%	3%	9%	4%	6%	7%
rejected %	90%	90%	44%	88%	47%	74%	grade 1 events	45	38	82	41	63	61
								0%	0%	0%	0%	0%	0%
							grade 2 events	1653	1435	14308	1685	7775	4862
								2%	1%	15%	2%	11%	5%
							grade 3 events	738	767	2465	844	3690	2981
								0%	1%	2%	1%	5%	3%
							grade 4 events	774	788	2325	856	3564	2758
								0%	1%	2%	1%	5%	2%
							grade 5 events	1986	2285	7354	2356	7278	3458
								2%	3%	7%	3%	10%	3%
							grade 6 events	1171	1175	23623	1502	17607	6359
								1%	1%	25%	2%	24%	6%
							grade 7 events	69242	64803	33635	63355	26346	66879
								88%	87%	36%	85%	37%	70%

2.2 Compared Parameters

Parameter	Planned	Actual	Parameter	Planned	Actual
Instrument	ACIS	ACIS	Obspar format version number	7	7
Detector	ACIS-235678	ACIS-235678	Obspar file type	PREDICTED	ACTUAL
Grating	NONE	NONE	Obspar update status	NONE	UPDATED
Data mode	VFAINT	VFAINT	Number of optional ACIS chips dropped	0	0
Observation mode	POINTING	POINTING	On-chip summing requested	N	N
[deg] Pointing RA	211.099808	211.1377771817024	Subarray requested	NONE	NONE
[deg] Pointing Dec	54.381283	54.39714338574777	Alternating exposures requested	N	N
[deg] Pointing Roll	4.783067	4.908833108234577	[s] Primary exposure time	0.000000	3.2
[mm] SIM focus pos	-0.684267	-0.6828225247311905			
[mm] SIM defocus	0	0.001444936568705701			
[mm] SIM translation stage pos	-190.132523	-190.1425803651734			
[mm] SIM translation stage offset	0	0.01005778216563158			
[s] Observation start time (MET)	152473731.184000	152472513.23414			
Observation start date	2002-10-31T17:47:47	2002-10-31T17:28:33			
[s] Observation end time (MET)	152488231.184000	152488653.39731			
Observation end date	2002-10-31T21:49:27	2002-10-31T21:57:33			
Read mode	TIMED	TIMED			

2.3 Aspect



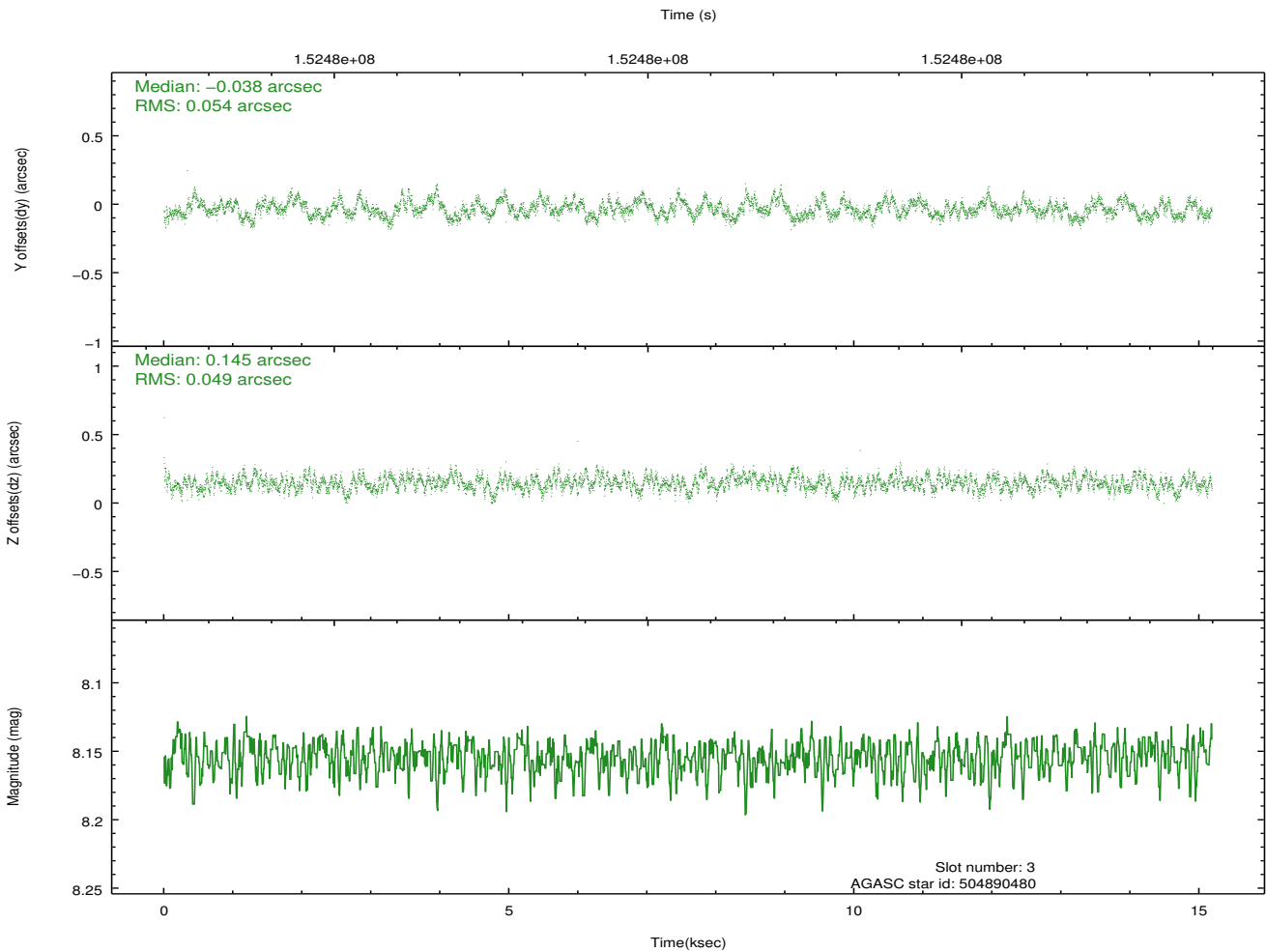
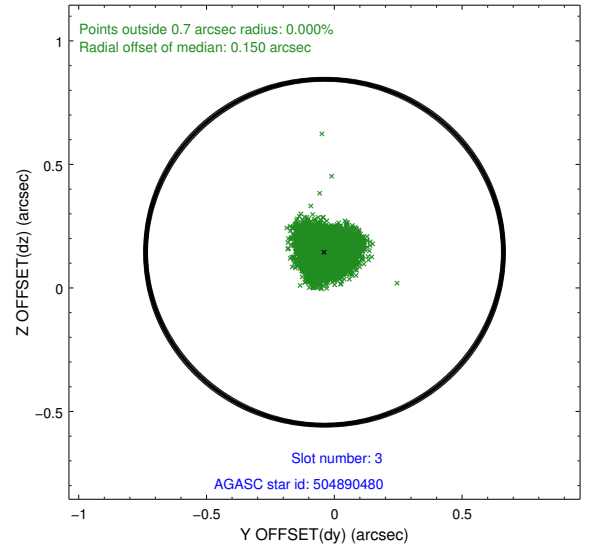
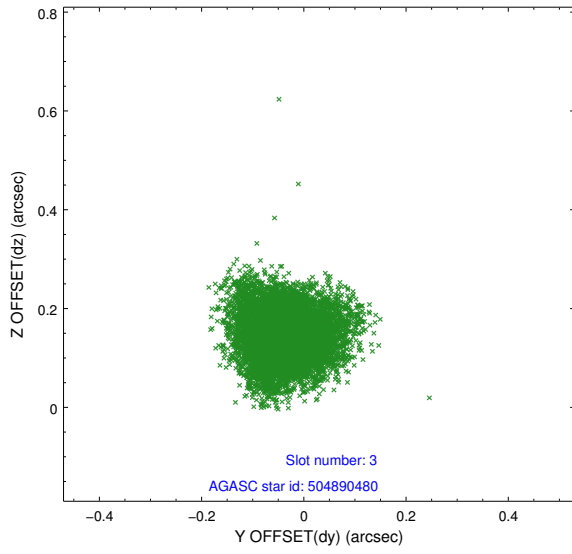


Slot Statistics

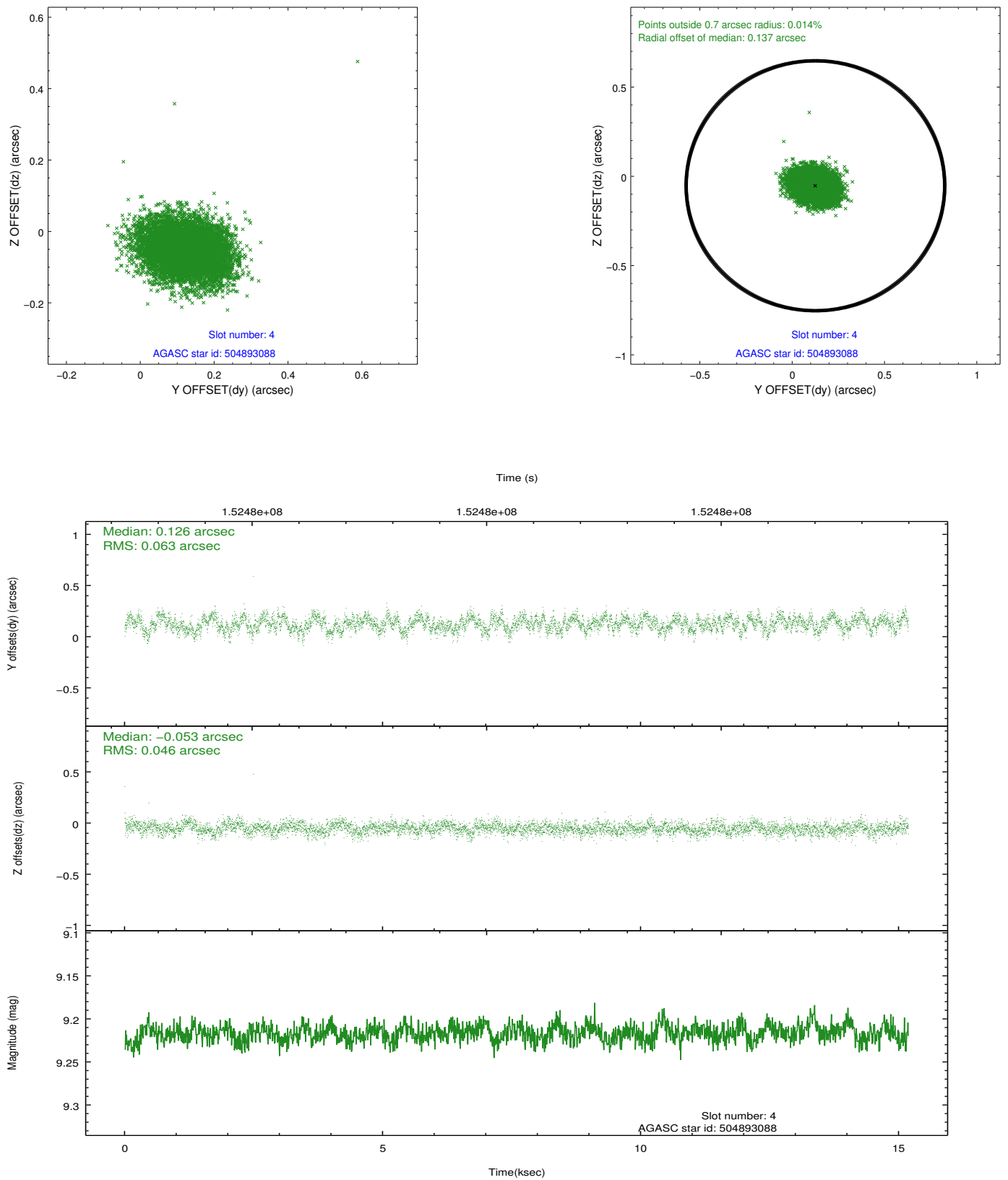
slot	status	id	mag	n_pts	med_dy	med_dz	dr1	dr2	ra	dec	mean_y	mean_z
0	FID	ACIS-S-2	7.11	3705	-0.008	-0.001	0.007	0.011	0.000000	0.000000	-755.28	-1729.35
1	FID	ACIS-S-4	7.20	3705	-0.029	0.004	0.006	0.010	0.000000	0.000000	2157.86	178.80
2	FID	ACIS-S-5	7.24	3704	0.005	0.006	0.007	0.013	0.000000	0.000000	-1807.71	172.85
3	GUIDE	504890480	8.15	7408	-0.038	0.145	0.078	0.123	210.132463	53.768436	-2232.89	-2013.27
4	GUIDE	504893088	9.22	7405	0.126	-0.053	0.082	0.133	210.351715	54.364955	-1566.80	80.09
5	GUIDE	504894408	9.27	7408	-0.038	0.148	0.079	0.128	211.942794	54.047749	1677.33	-1334.12
6	GUIDE	504890776	9.26	7400	-0.051	0.037	0.099	0.167	211.095934	54.816966	123.97	1563.59
7	GUIDE	505292416	9.32	7403	0.005	-0.274	0.111	0.174	210.920759	55.040479	-169.37	2396.29

2.4 Star Slots

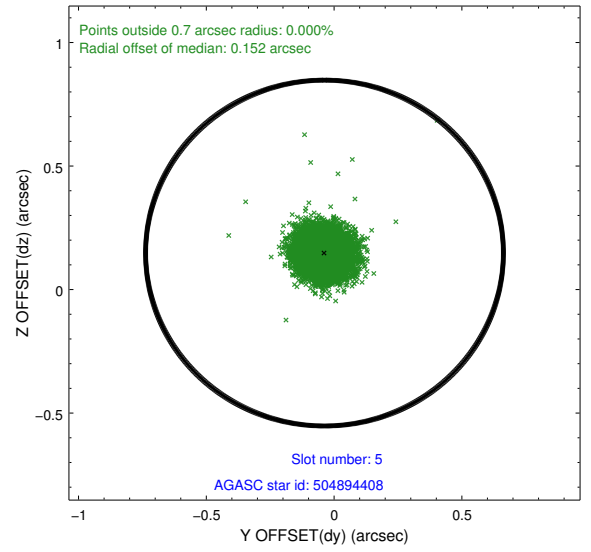
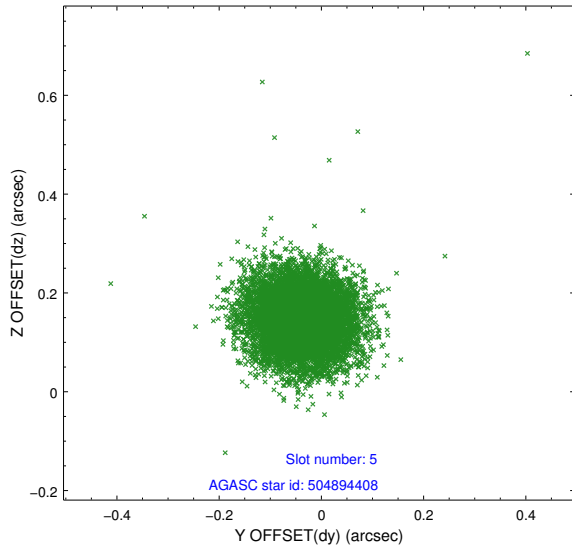
2.4.1 Slot 3



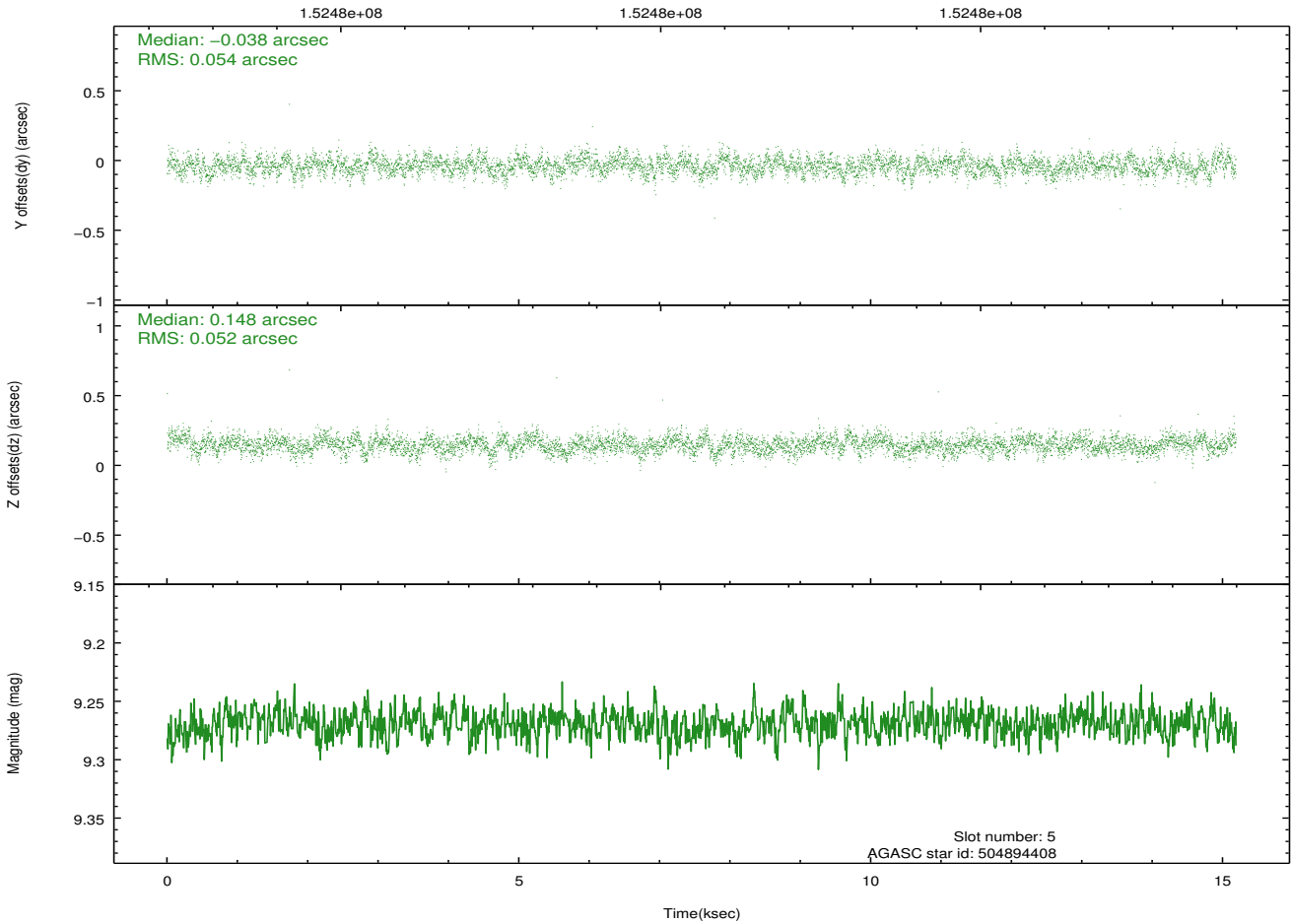
2.4.2 Slot 4



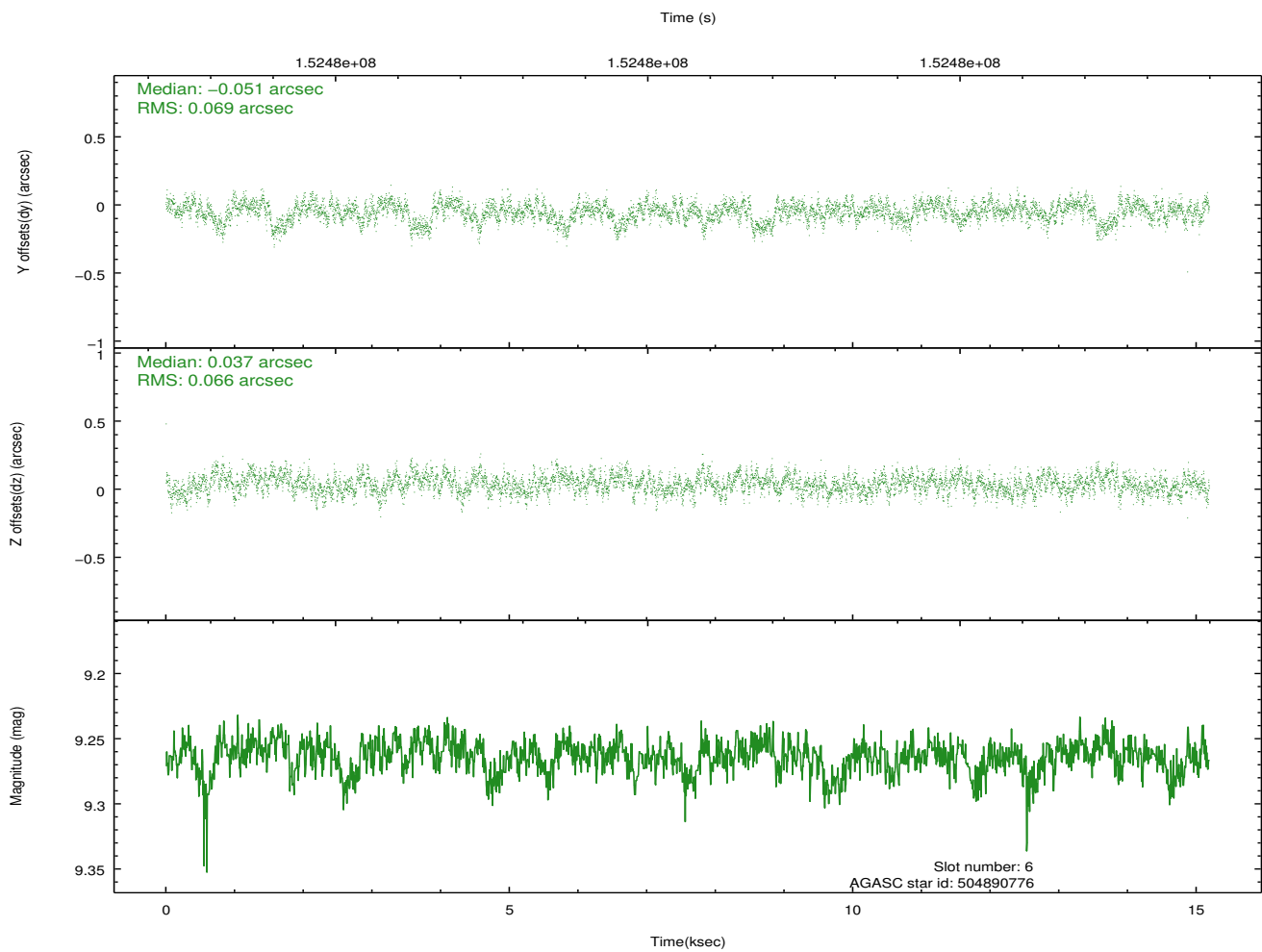
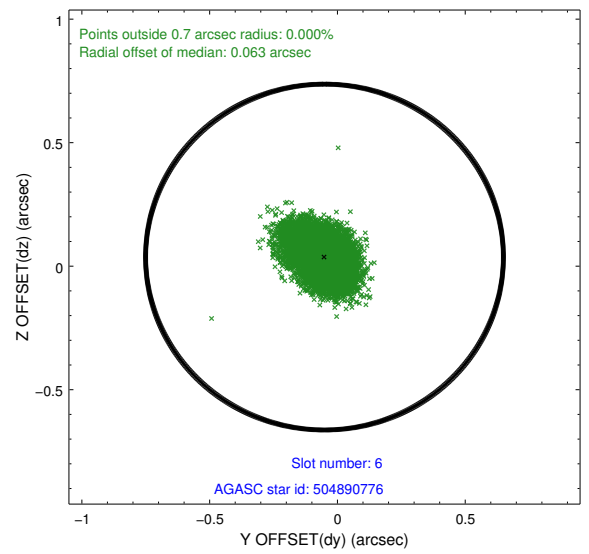
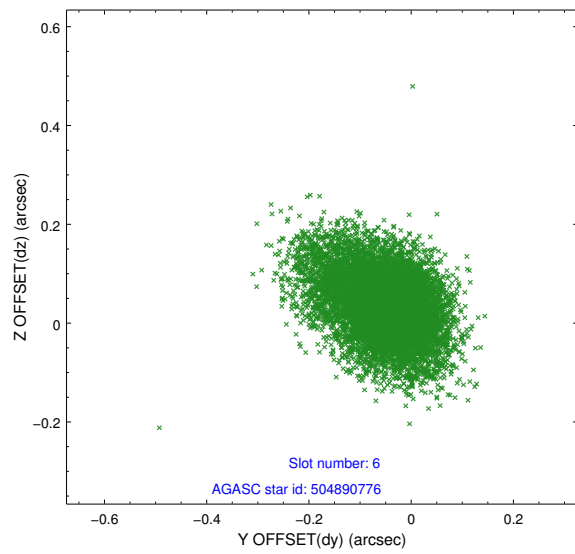
2.4.3 Slot 5



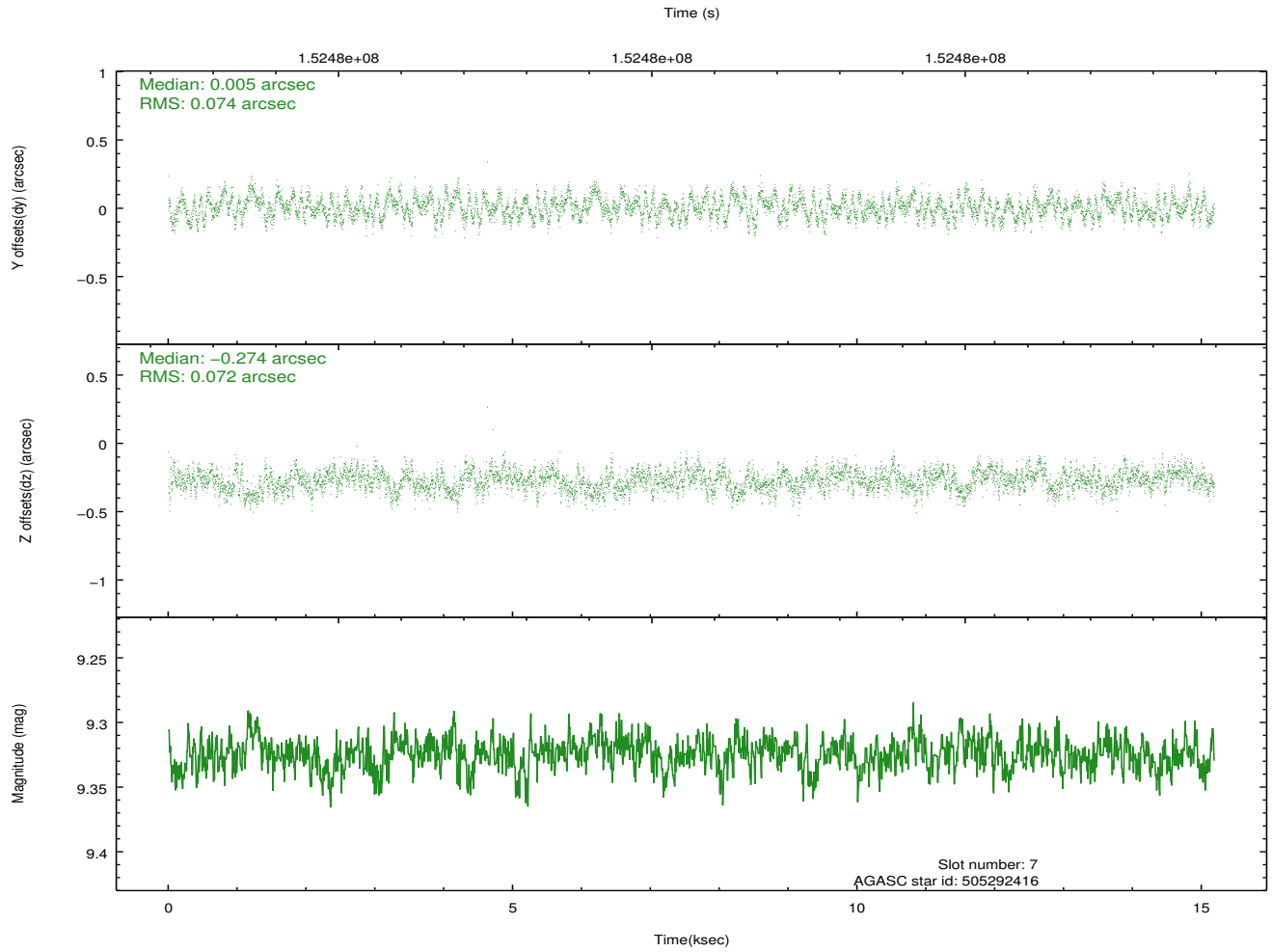
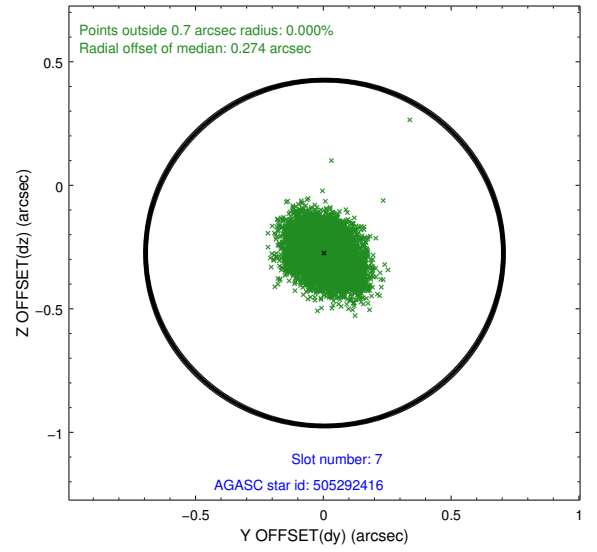
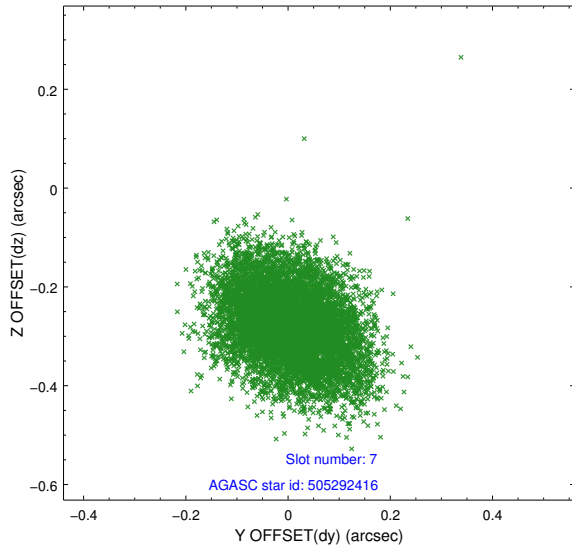
Time (s)



2.4.4 Slot 6

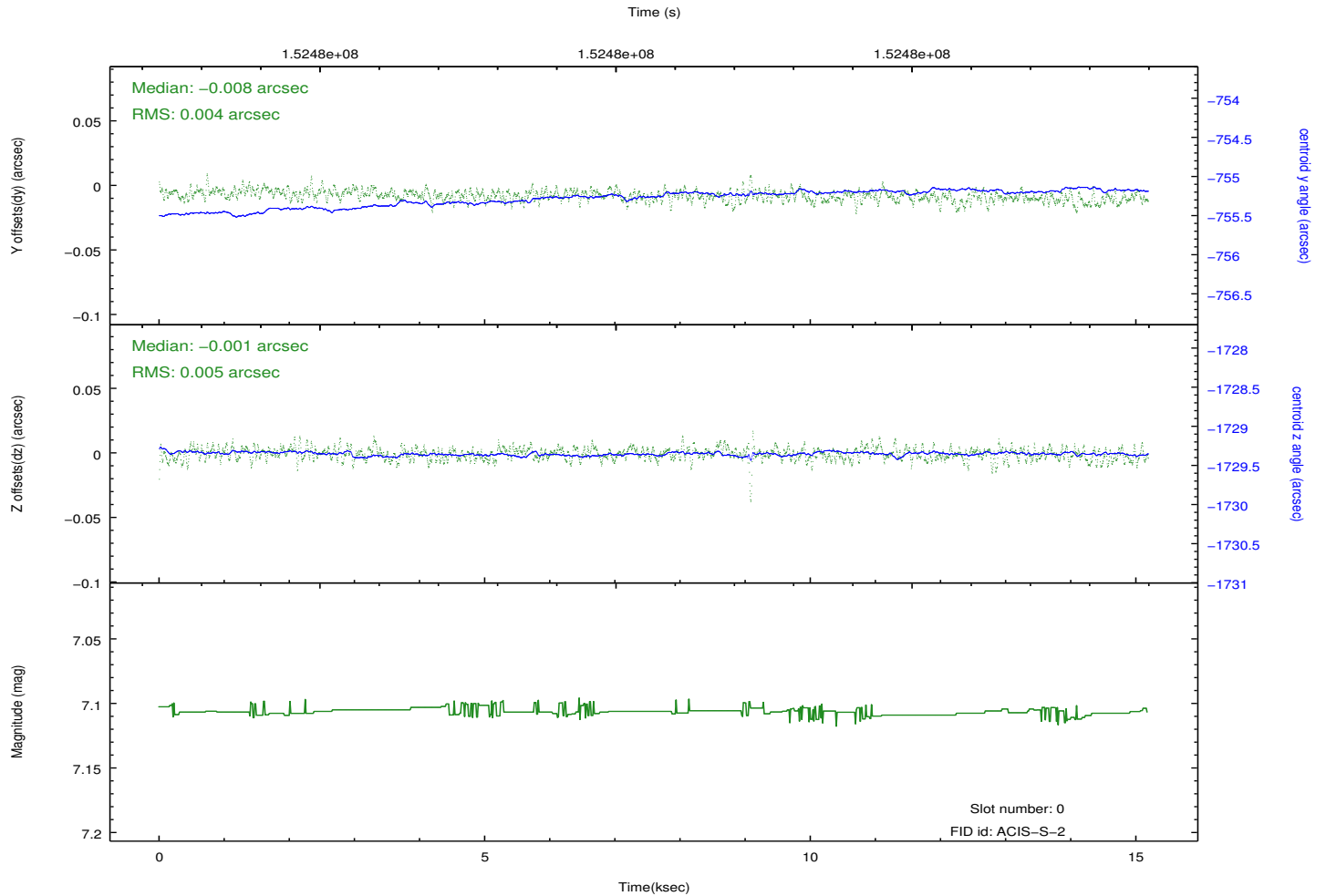
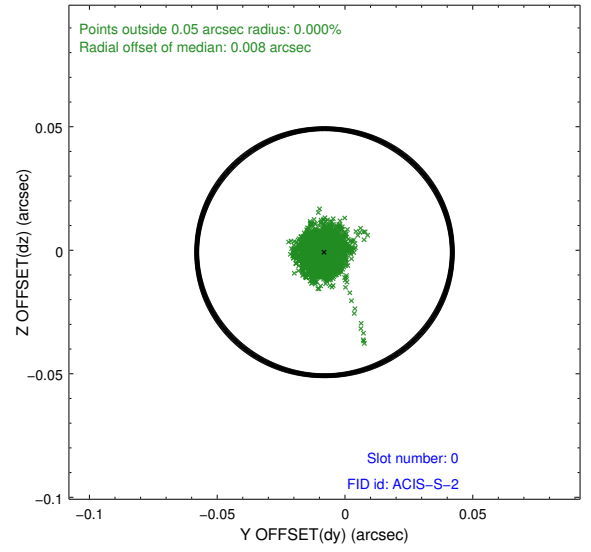
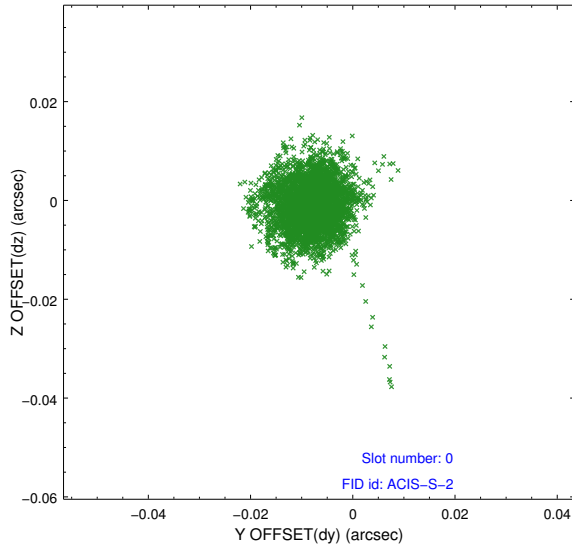


2.4.5 Slot 7

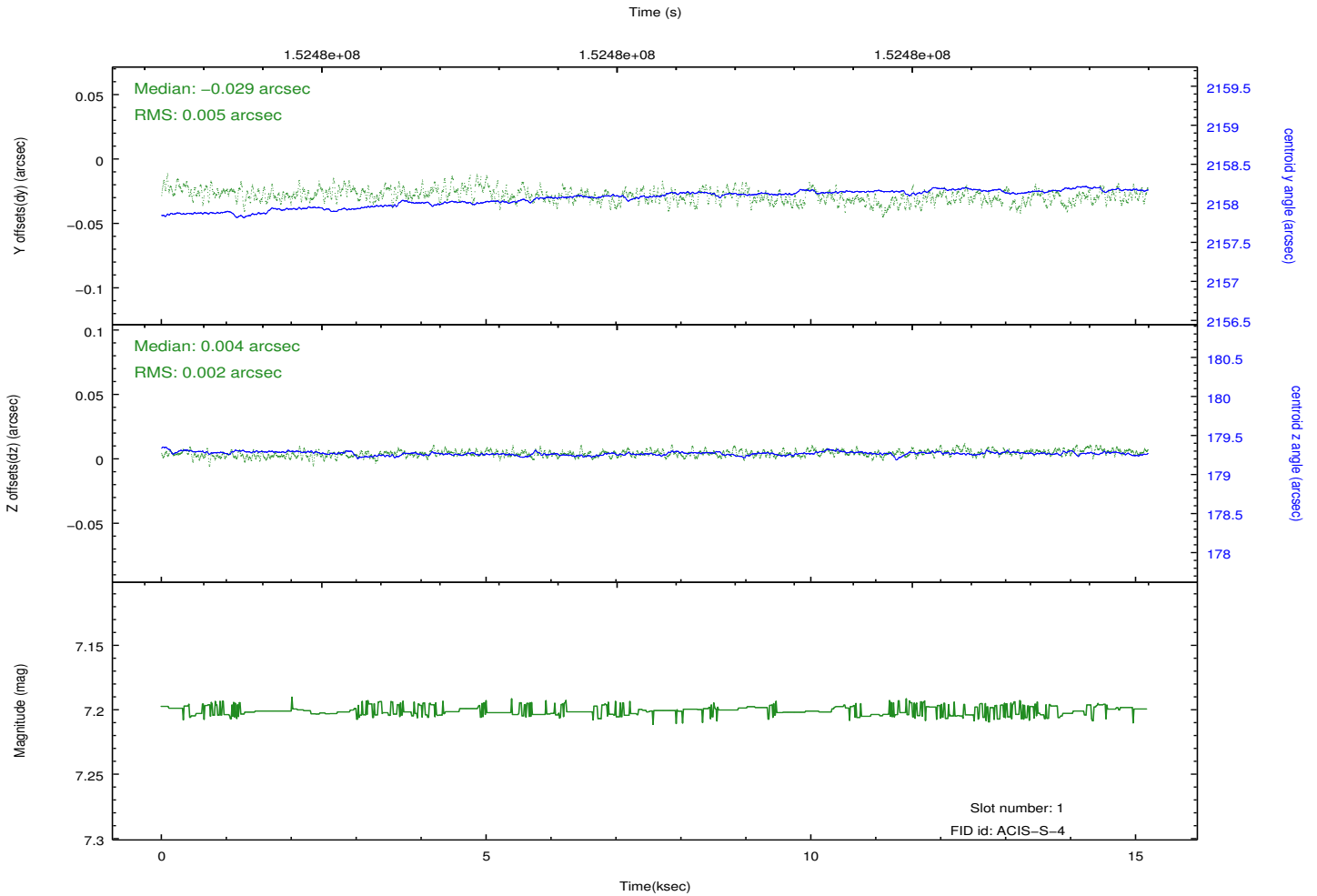
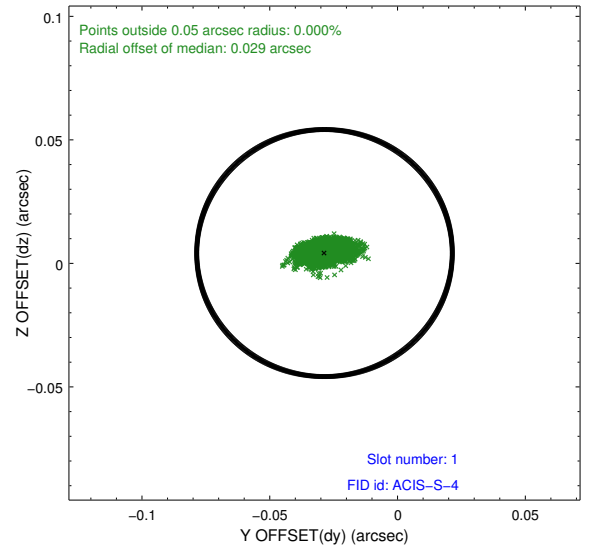
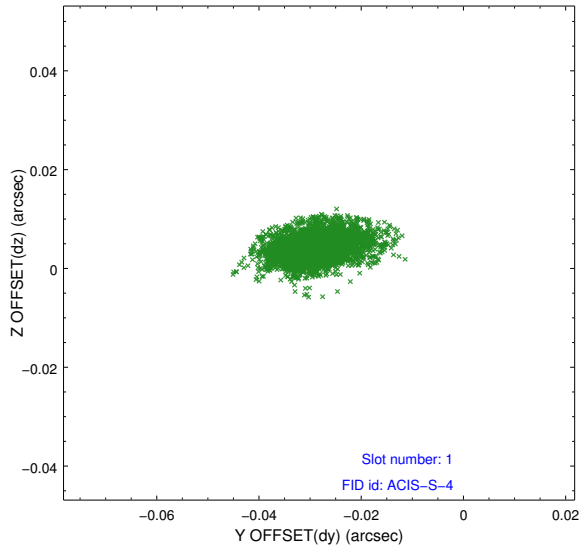


2.5 FID Slots

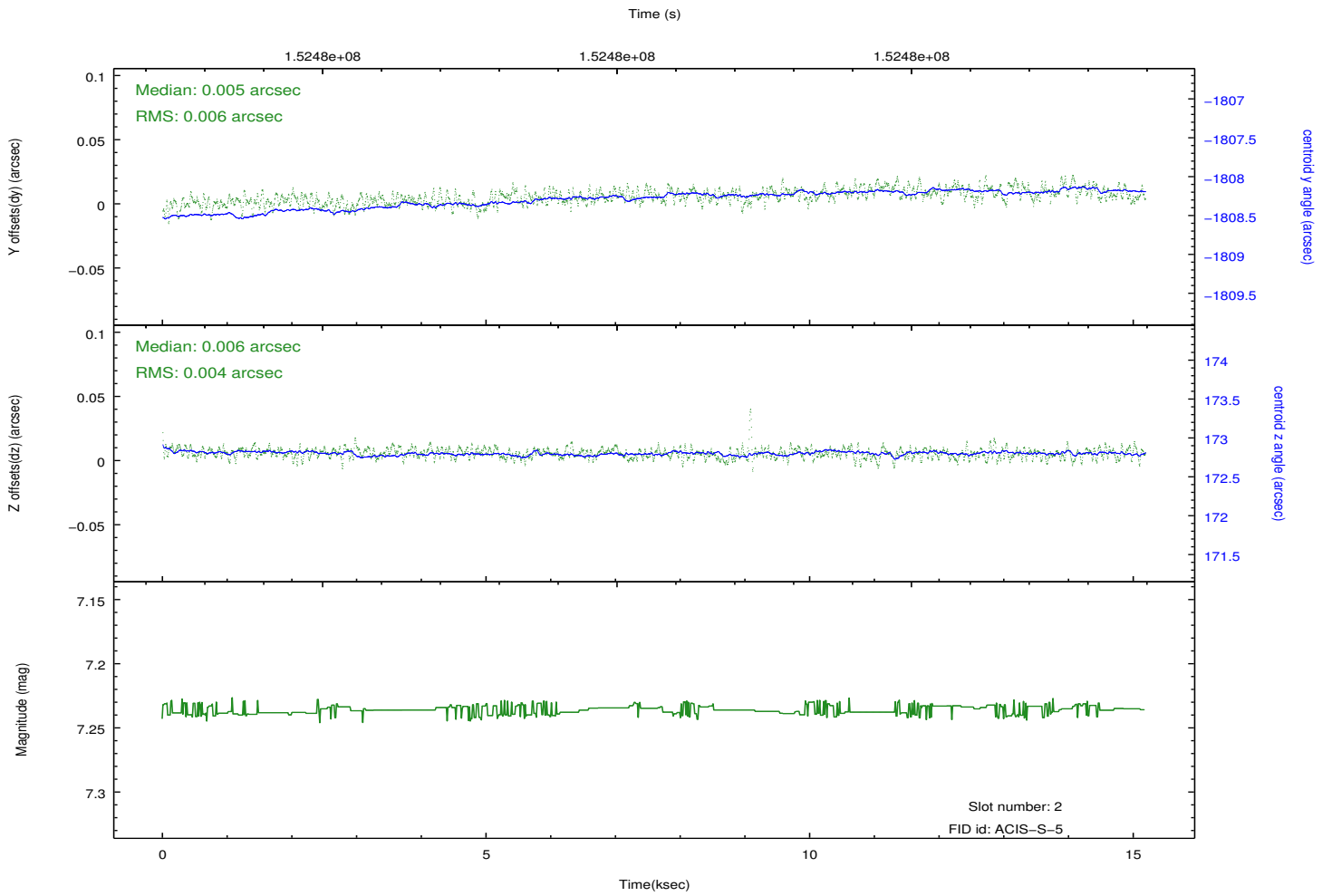
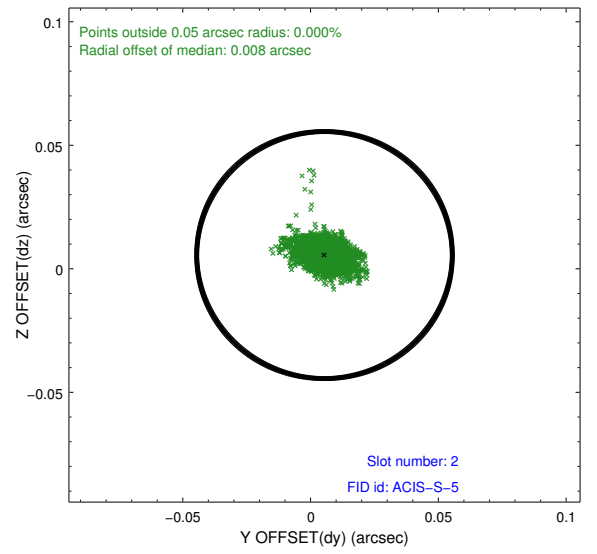
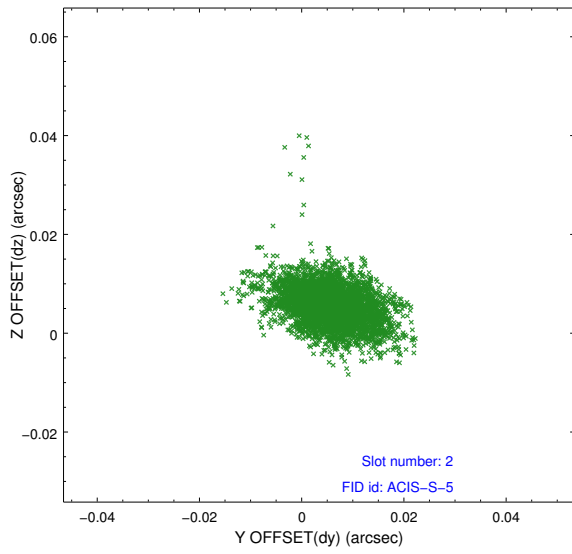
2.5.1 Slot 0



2.5.2 Slot 1



2.5.3 Slot 2



A Summary

A.1 Status

V&V Scientist	Jen Lauer
V&V Date (YYYY-MM-DD)	2012.10.25
V&V Edition	1
V&V Disposition and Status	OK
V&V Charge Time	14.46

A.2 Comments