

V&V Reference Report

L2 ASCDS Version : 8.4.5

Observation 2809 - L2 Version 3
Chandra X-Ray Center

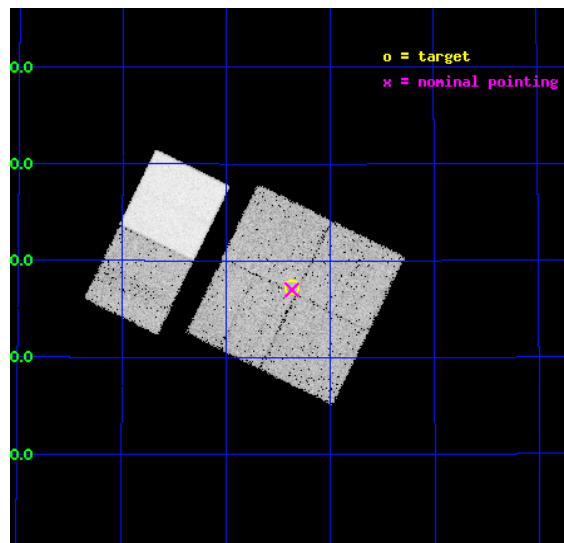
L2 Processing Date : Oct 18 2012

Contents

1	Front	2
2	OBI	3
2.1	OBI	3
2.1.1	Images	3
2.1.2	Bias	3
2.1.3	Parameters	4
2.1.4	Events	4
2.2	Compared Parameters	5
2.3	Aspect	6
2.4	Star Slots	9
2.4.1	Slot 3	9
2.4.2	Slot 4	10
2.4.3	Slot 5	11
2.4.4	Slot 6	12
2.4.5	Slot 7	13
2.5	FID Slots	14
2.5.1	Slot 0	14
2.5.2	Slot 1	15
2.5.3	Slot 2	16
A	Summary	17
A.1	Status	17
A.2	Comments	17

1 Front

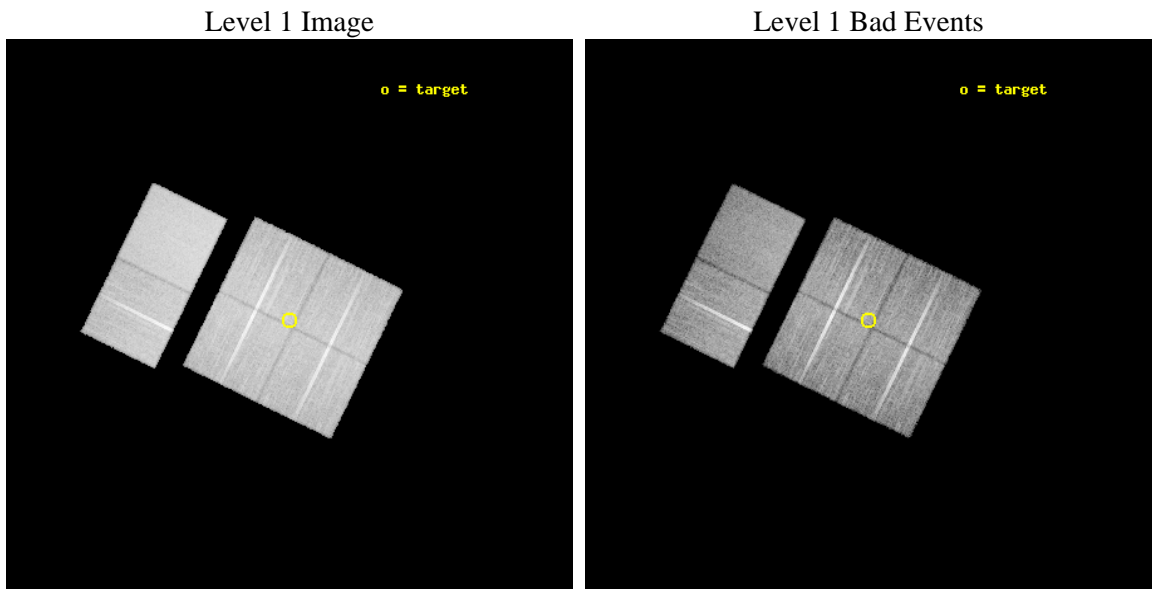
seq_num	500259	Sequence number
obs_id	2809	Observation id
title	A CHANDRA SURVEY FOR COMPACT OBJECTS IN SUPERNOVA REMNANTS	Proposa
observer	Prof. Shrinivas Kulkarni	Principal investigator
object	G084.2-0.8	Source name
dtycycle	0	
cycle	P	events from which exps? Prim/Second/Both
ra_targ	313.341667	Observer's specified target RA [deg]
dec_targ	43.455	Observer's specified target Dec [deg]
ra_nom	313.34200982341	Nominal RA [deg]
dec_nom	43.450377954629	Nominal Dec [deg]
roll_nom	296.11931072482	Nominal Roll [deg]
revision	3	Processing version of data
ontime	24931.199907124	Sum of GTIs [s]
livetime	24615.506042134	Livetime [s]
ontime0	24931.199907124	Sum of GTIs [s]
ontime1	24931.199907124	Sum of GTIs [s]
ontime2	24931.199907124	Sum of GTIs [s]
ontime3	24931.199907124	Sum of GTIs [s]
ontime6	24931.199907124	Sum of GTIs [s]
ontime7	24931.199907124	Sum of GTIs [s]
l2events	162745	Number of level 2 events



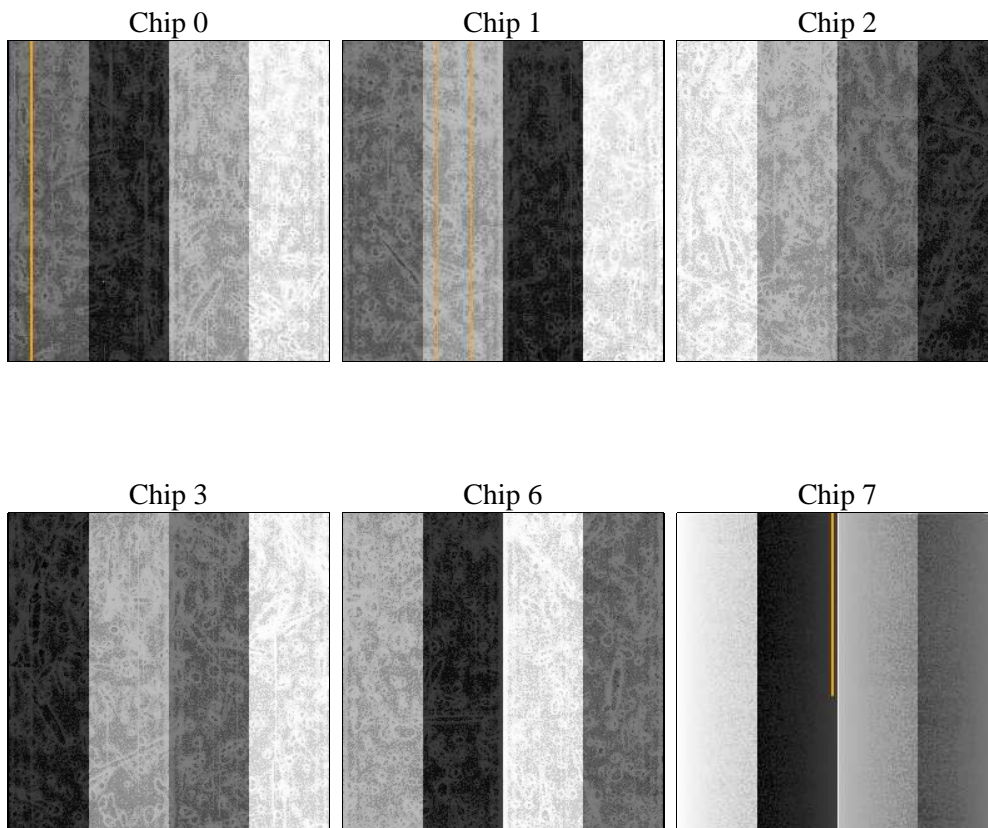
2 OBI

2.1 OBI

2.1.1 Images



2.1.2 Bias



2.1.3 Parameters

obi_num	0	Obi number	sched_exp_time	25000.000000	[s] Scheduled observation exposure time
ascdsver	8.4.5	Processing system revision	ontime	24931.199907124	Sum of GTIs [s]
caldbver	4.5.2	 	ontime0	24931.199907124	Sum of GTIs [s]
date	2012-10-18T03:47:42	Date and time of file creation	ontime1	24931.199907124	Sum of GTIs [s]
revision	3	Processing version of data	ontime2	24931.199907124	Sum of GTIs [s]
			ontime3	24931.199907124	Sum of GTIs [s]
			ontime6	24931.199907124	Sum of GTIs [s]
			ontime7	24931.199907124	Sum of GTIs [s]
			l1events	969108	Number of level 1 events

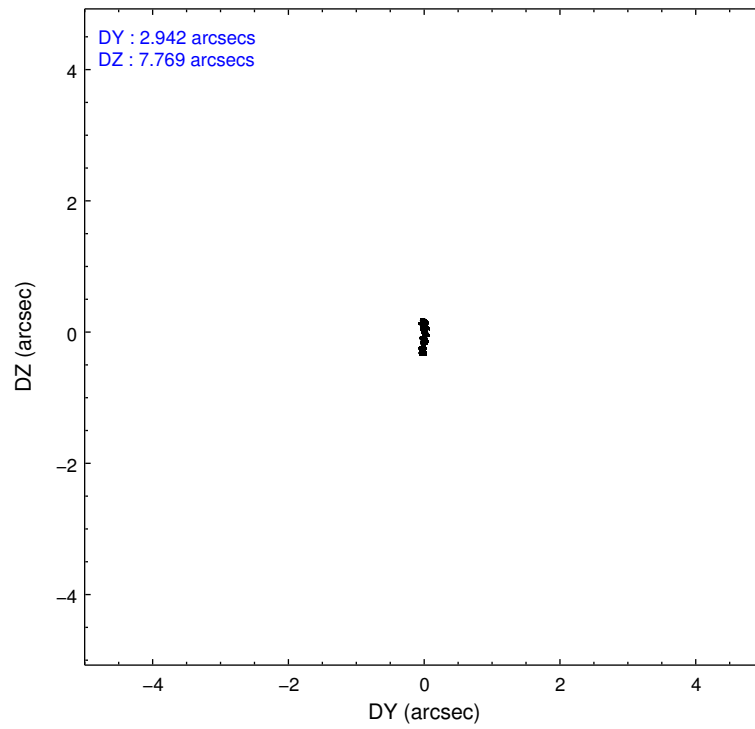
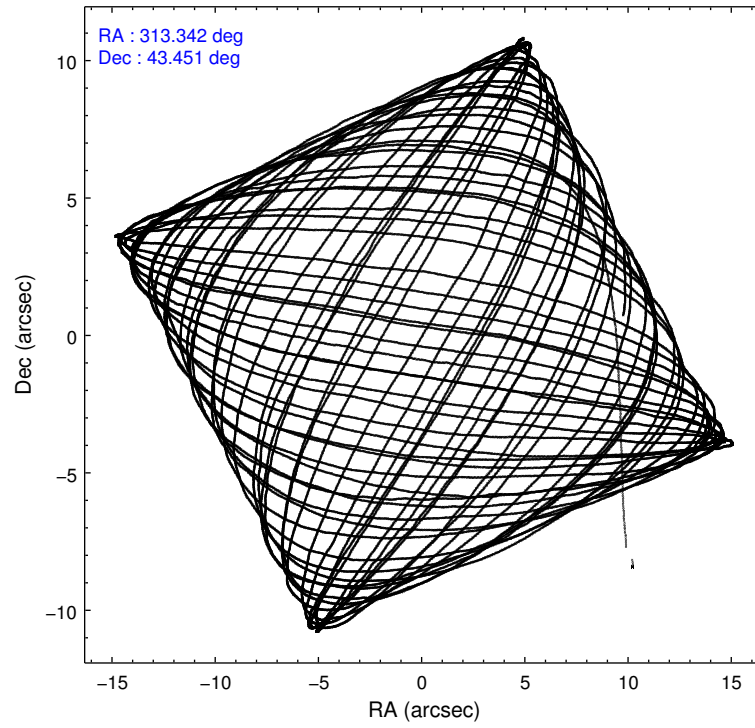
2.1.4 Events

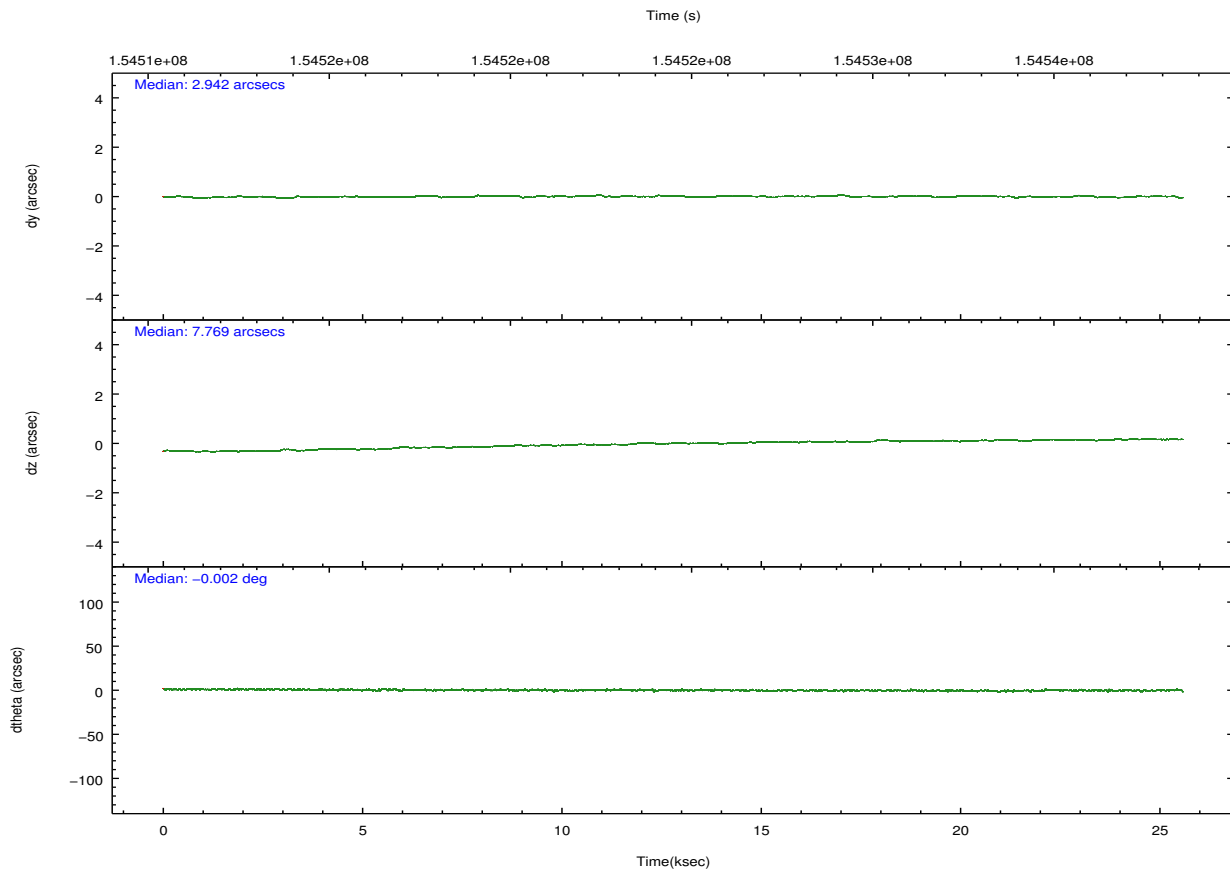
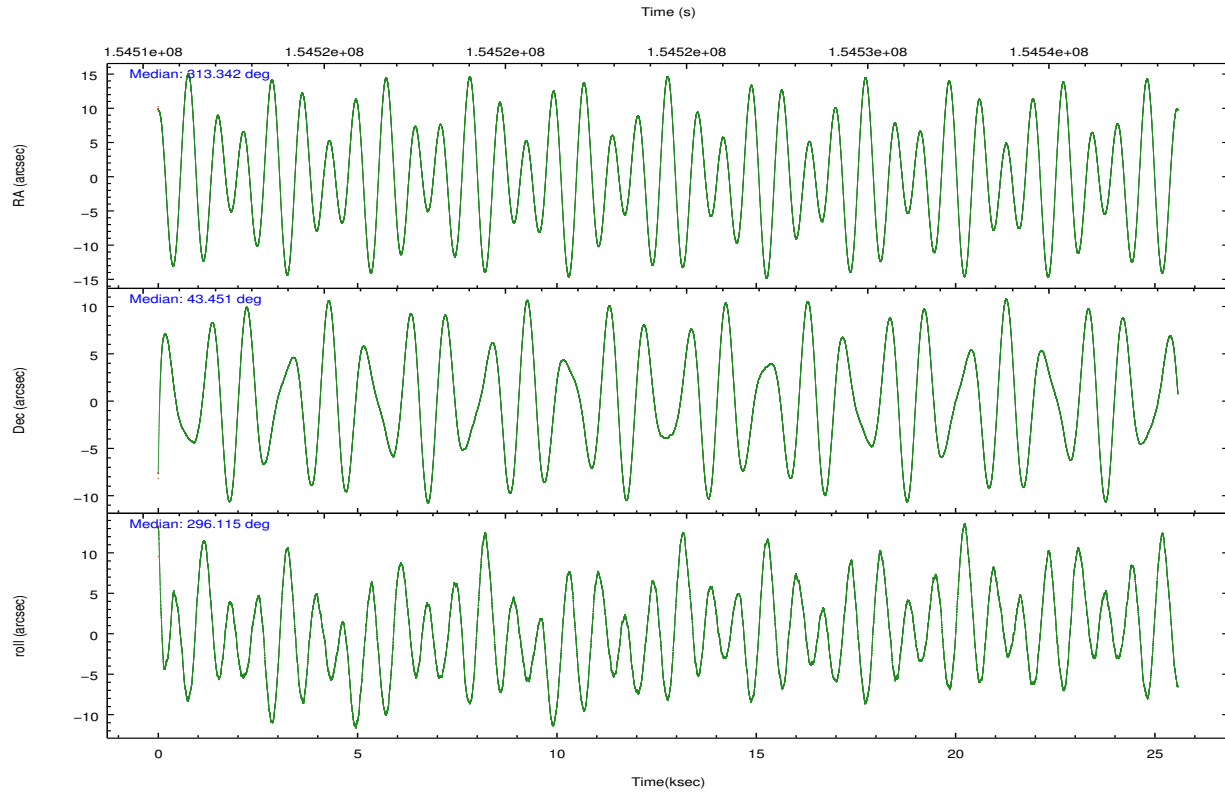
	ccd 0	ccd 1	ccd 2	ccd 3	ccd 6	ccd 7		ccd 0	ccd 1	ccd 2	ccd 3	ccd 6	ccd 7
level 1 events	144421	145184	158105	156302	160545	204551	grade 0 events	8242	7948	9449	7876	7308	7384
rejected events	125578	125482	138449	138359	142007	121008		5%	5%	5%	5%	4%	3%
rejected %	86%	86%	87%	88%	88%	59%	grade 1 events	76	72	109	83	86	207
								0%	0%	0%	0%	0%	0%
							grade 2 events	3816	4174	3640	3316	3854	16375
								2%	2%	2%	2%	2%	8%
							grade 3 events	1939	1940	1766	1742	1791	7397
								1%	1%	1%	1%	1%	3%
							grade 4 events	1672	1942	1786	1838	1858	7584
								1%	1%	1%	1%	1%	3%
							grade 5 events	5994	6363	5658	6776	6972	19466
								4%	4%	3%	4%	4%	9%
							grade 6 events	3176	3700	3017	3176	3731	44814
								2%	2%	1%	2%	2%	21%
							grade 7 events	119506	119045	132680	131495	134945	101324
								82%	81%	83%	84%	84%	49%

2.2 Compared Parameters

Parameter	Planned	Actual	Parameter	Planned	Actual
Instrument	ACIS	ACIS	Obspar format version number	7	7
Detector	ACIS-012367	ACIS-012367	Obspar file type	PREDICTED	ACTUAL
Grating	NONE	NONE	Obspar update status	NONE	UPDATED
Data mode	FAINT	FAINT	Number of optional ACIS chips dropped	0	0
Observation mode	POINTING	POINTING	On-chip summing requested	N	N
[deg] Pointing RA	313.310606	313.3420098234129	Subarray requested	NONE	NONE
[deg] Pointing Dec	43.465544	43.45037795462853	Alternating exposures requested	N	N
[deg] Pointing Roll	295.932222	296.1193107248163	[s] Primary exposure time	0.000000	3.2
[mm] SIM focus pos	-0.782348	-0.7809083437167272			
[mm] SIM defocus	0	0.001439871863259334			
[mm] SIM translation stage pos	-233.592463	-233.5874344608287			
[mm] SIM translation stage offset	0	-0.005018542100998502			
[s] Observation start time (MET)	154512272.184000	154511115.31895			
Observation start date	2002-11-24T08:03:28	2002-11-24T07:45:15			
[s] Observation end time (MET)	154537272.184000	154537974.93257			
Observation end date	2002-11-24T15:00:08	2002-11-24T15:12:54			
Read mode	TIMED	TIMED			

2.3 Aspect



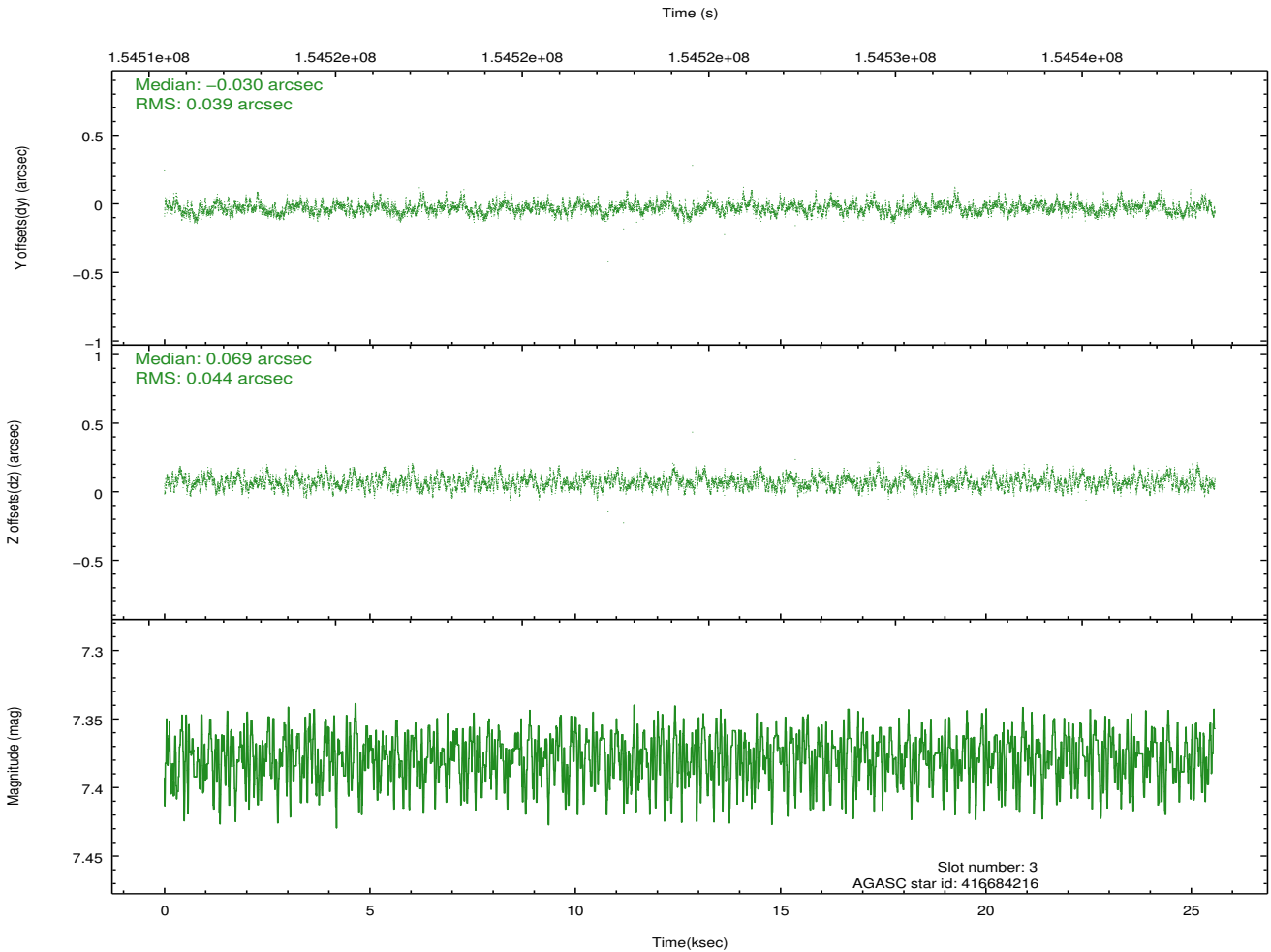
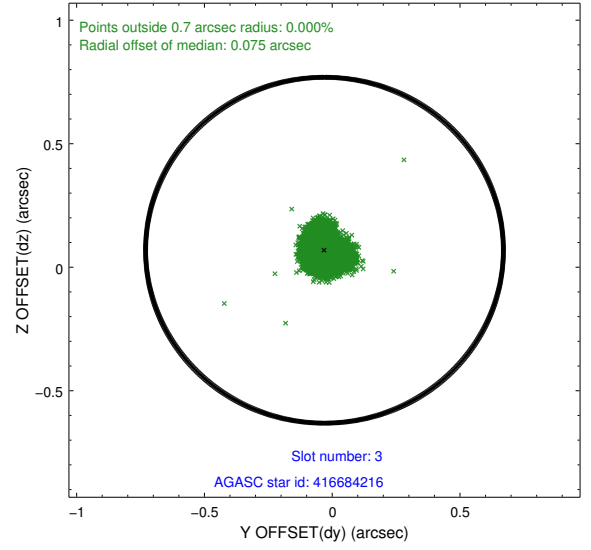
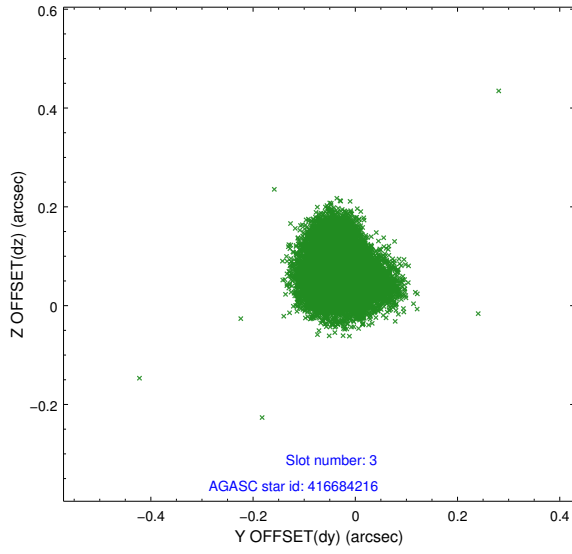


Slot Statistics

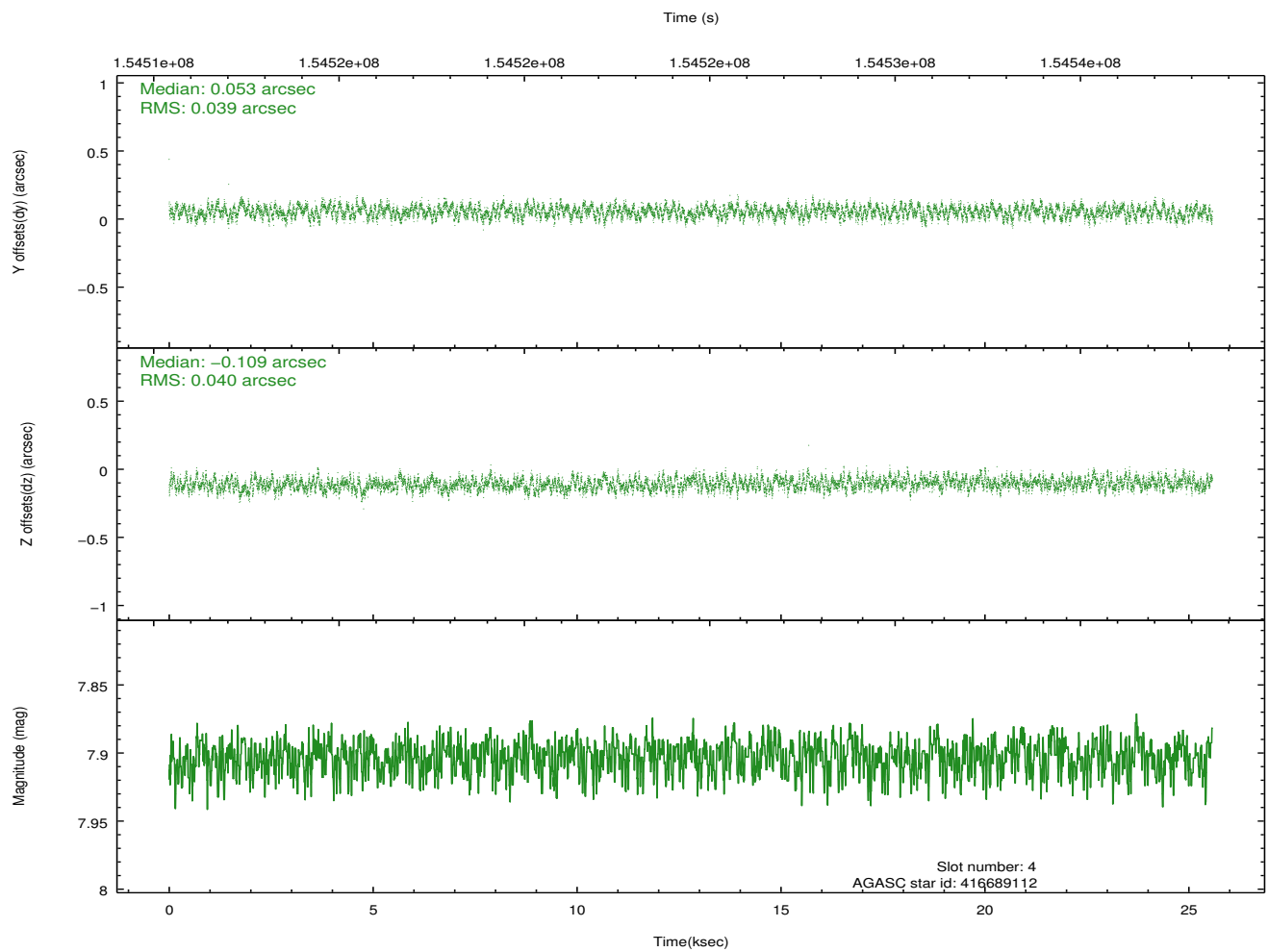
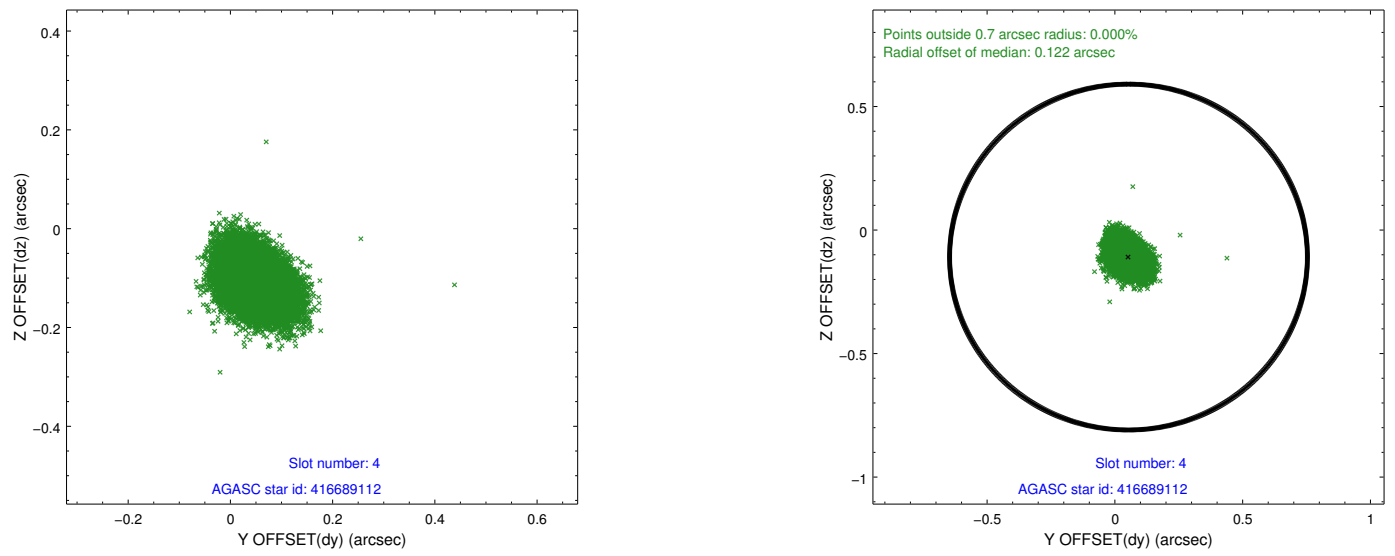
slot	status	id	mag	n_pts	med_dy	med_dz	dr1	dr2	ra	dec	mean_y	mean_z
0	FID	ACIS-I-1	7.25	6240	-0.057	-0.010	0.012	0.020	0.000000	0.000000	936.79	-831.15
1	FID	ACIS-I-4	7.19	6238	0.055	0.058	0.009	0.014	0.000000	0.000000	2157.02	1068.66
2	FID	ACIS-I-5	7.23	6237	-0.096	0.023	0.008	0.013	0.000000	0.000000	-1811.09	1066.62
3	GUIDE	416684216	7.38	12477	-0.030	0.069	0.063	0.100	314.048312	43.424312	969.81	1672.82
4	GUIDE	416689112	7.90	12479	0.053	-0.109	0.060	0.096	313.819394	43.790478	-476.76	1701.64
5	GUIDE	416683648	9.75	12471	-0.125	0.061	0.101	0.165	312.881043	44.014553	-2265.86	-135.33
6	GUIDE	416682032	9.68	12462	0.054	-0.023	0.092	0.152	313.097525	43.153245	766.38	-995.42
7	GUIDE	416680112	9.39	12474	0.048	-0.002	0.092	0.148	313.112548	43.227624	543.28	-842.00

2.4 Star Slots

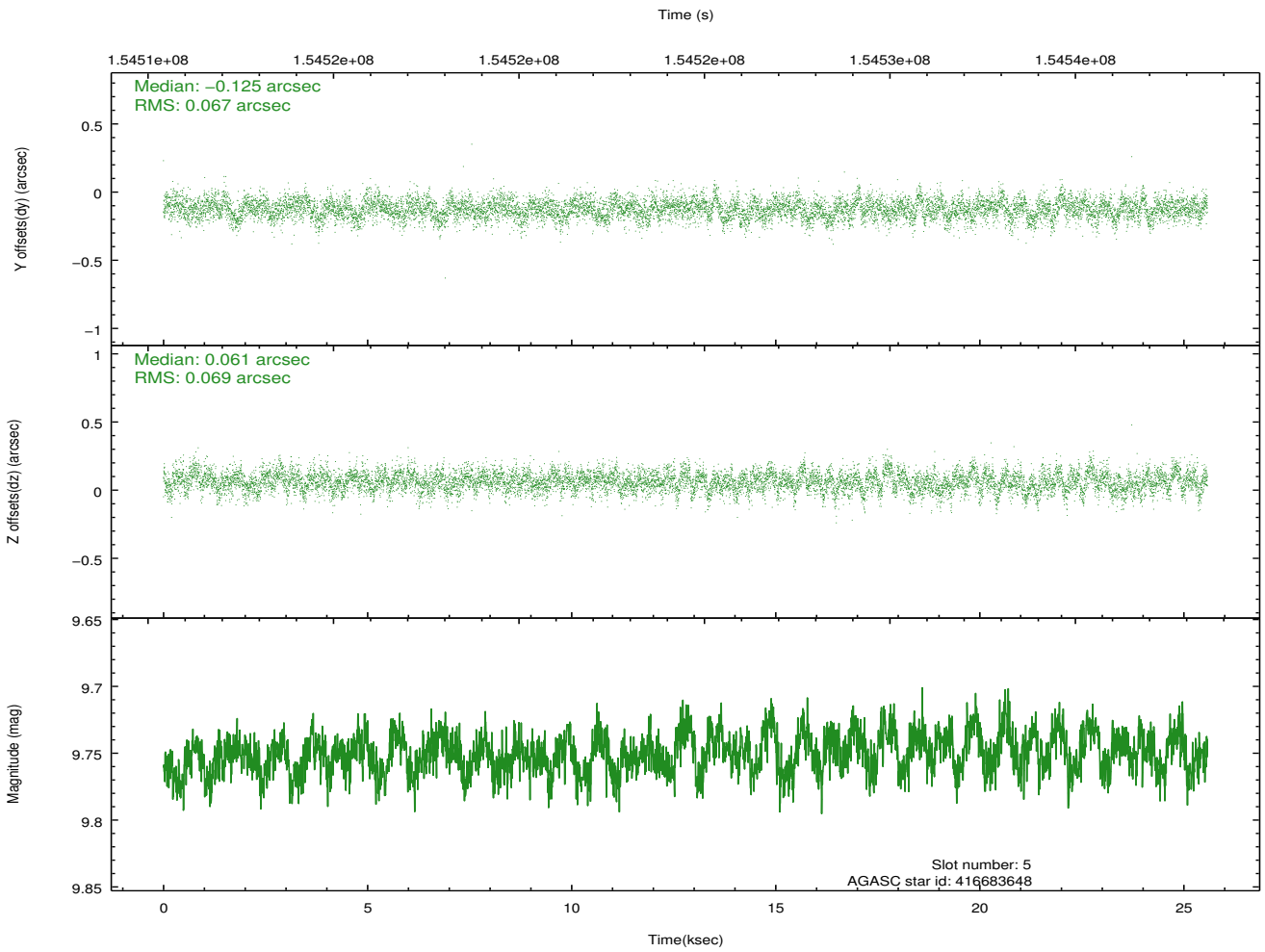
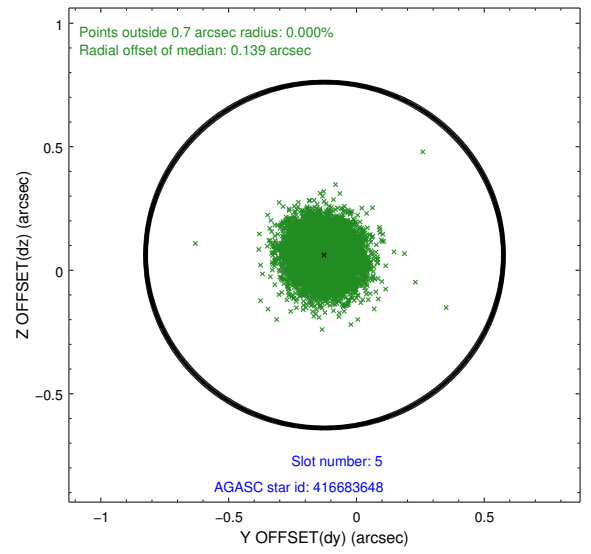
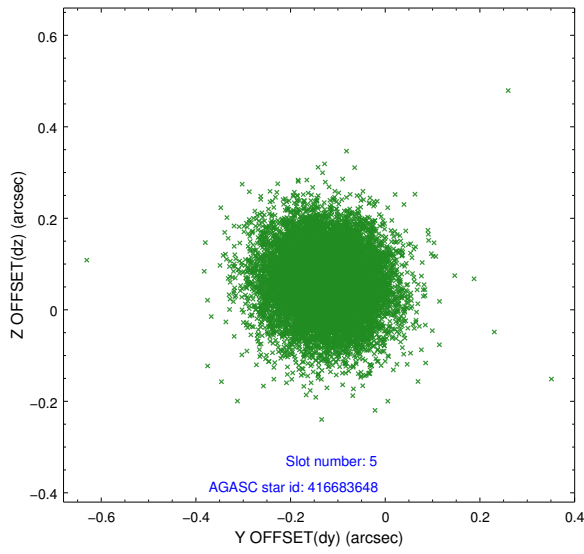
2.4.1 Slot 3



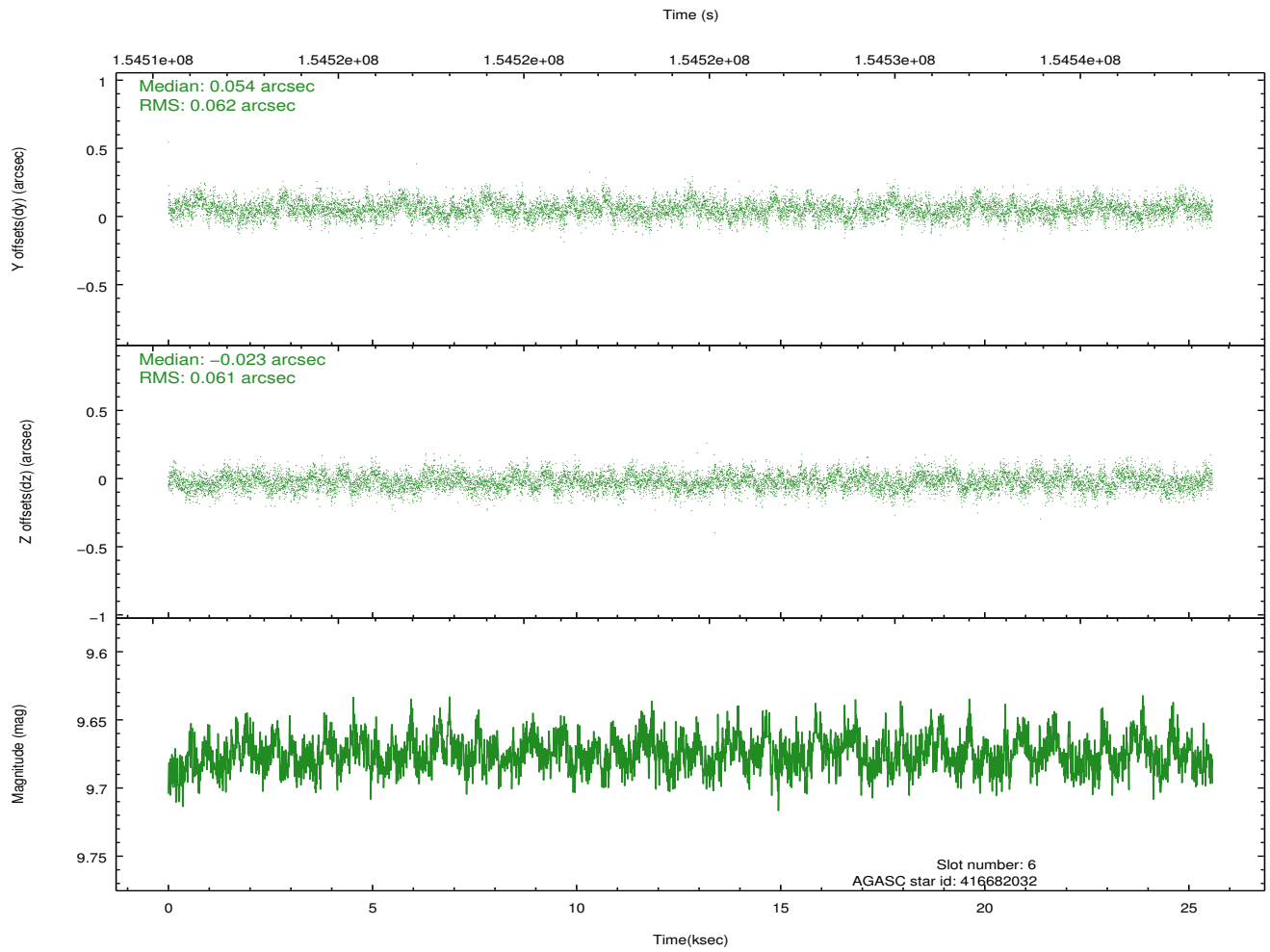
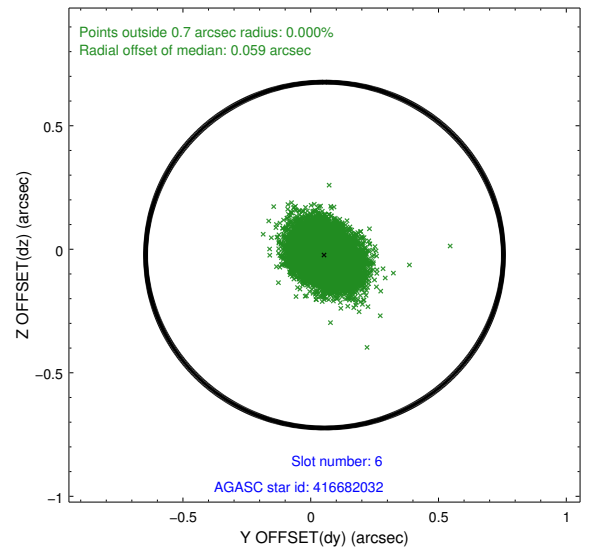
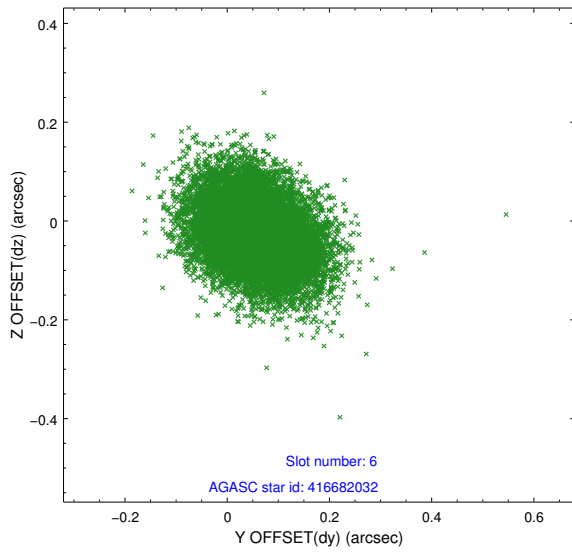
2.4.2 Slot 4



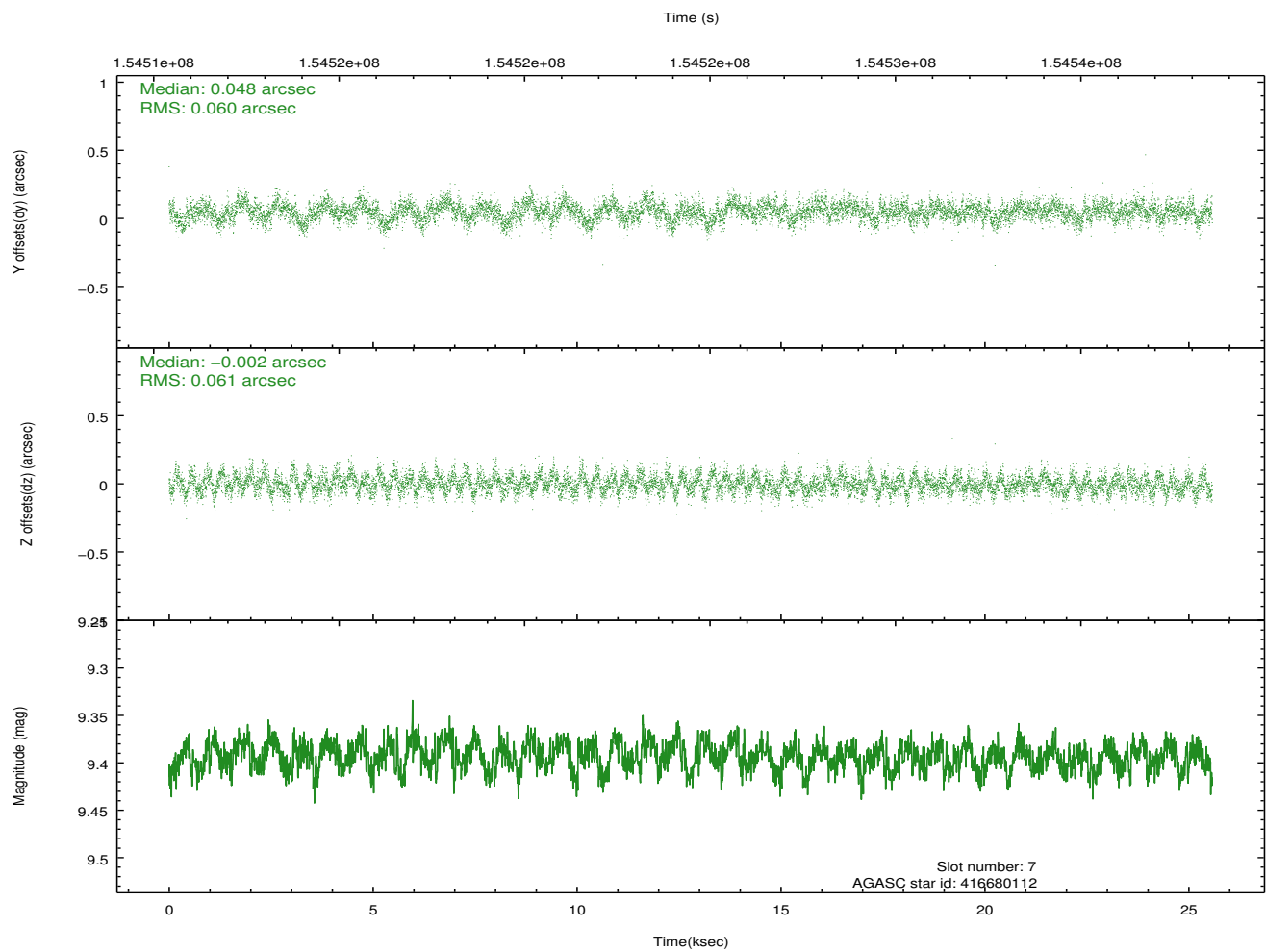
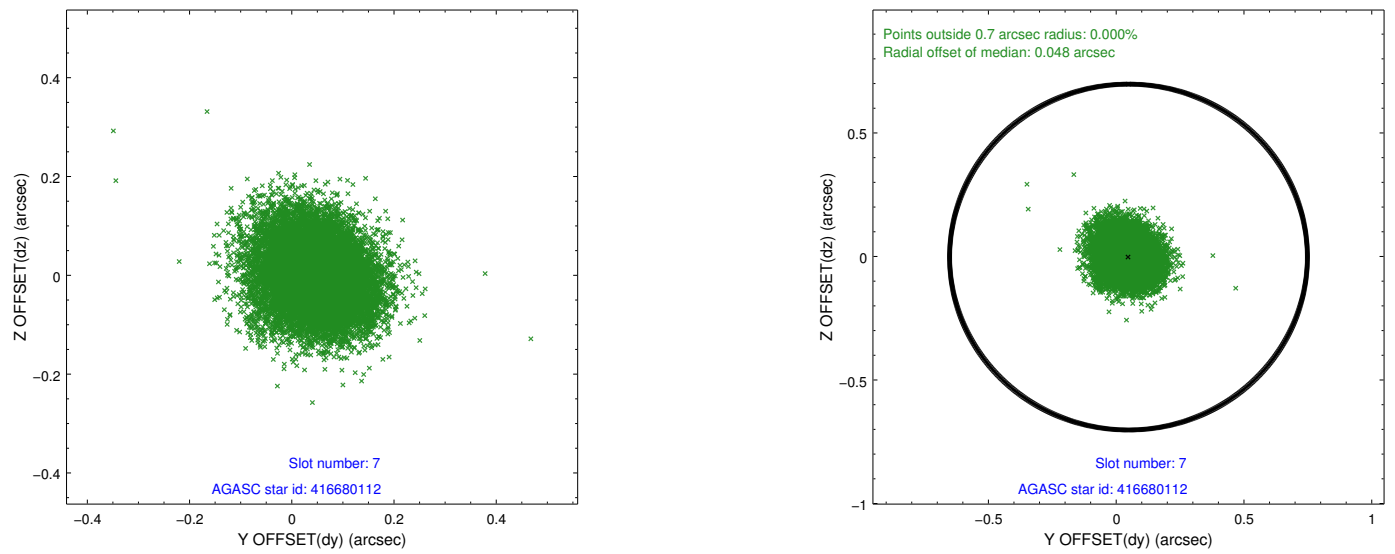
2.4.3 Slot 5



2.4.4 Slot 6

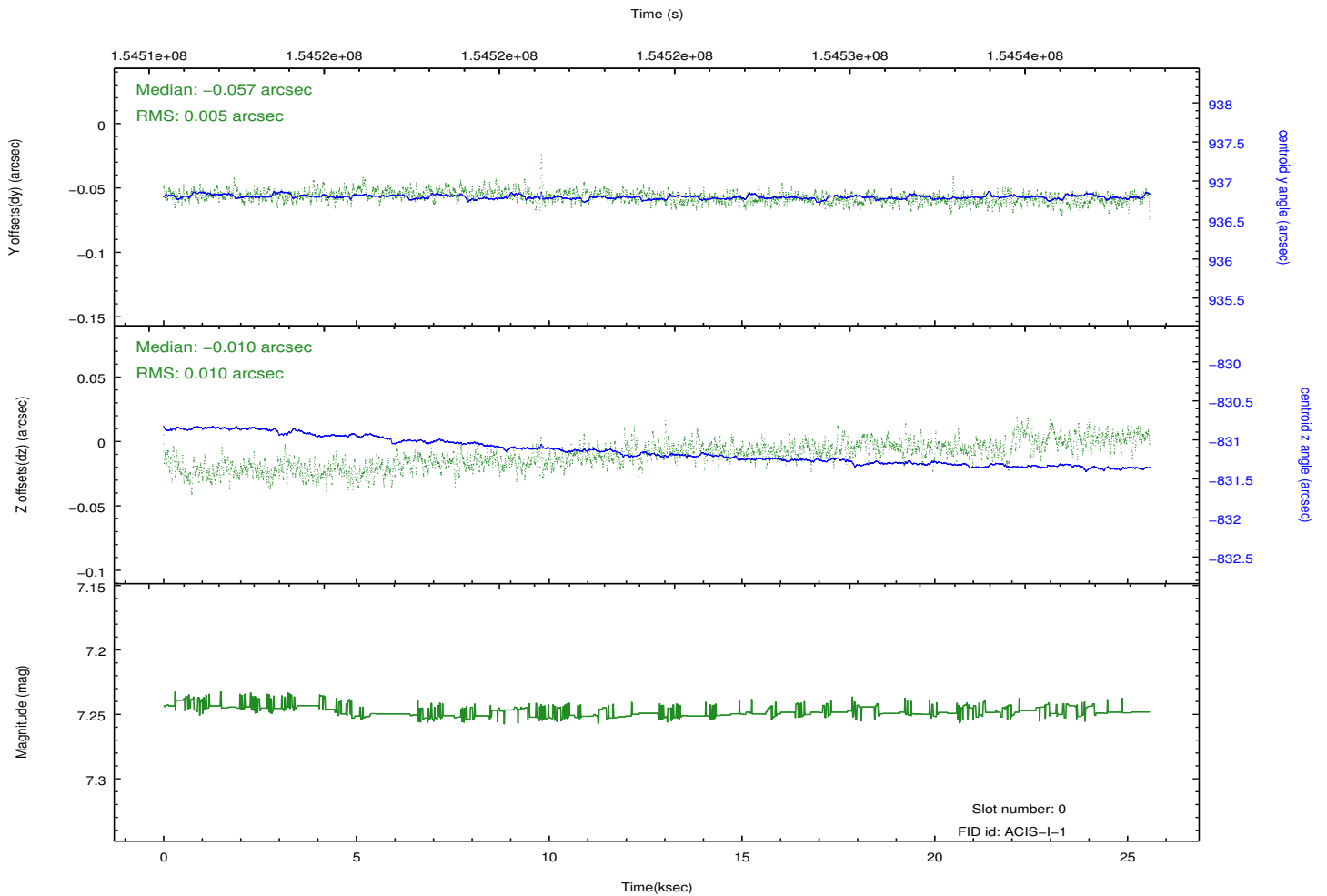
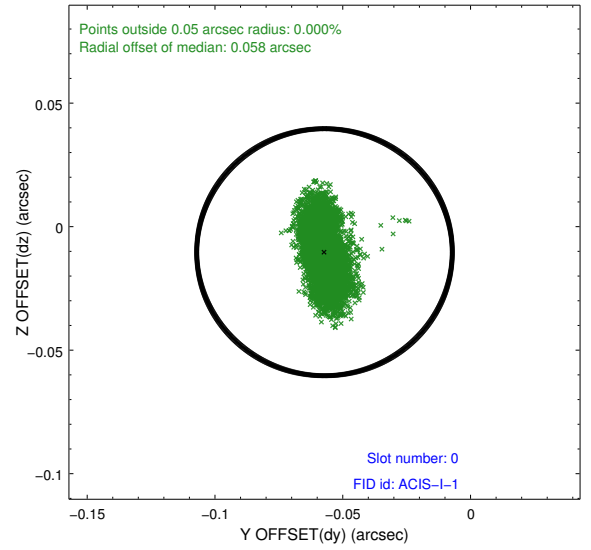
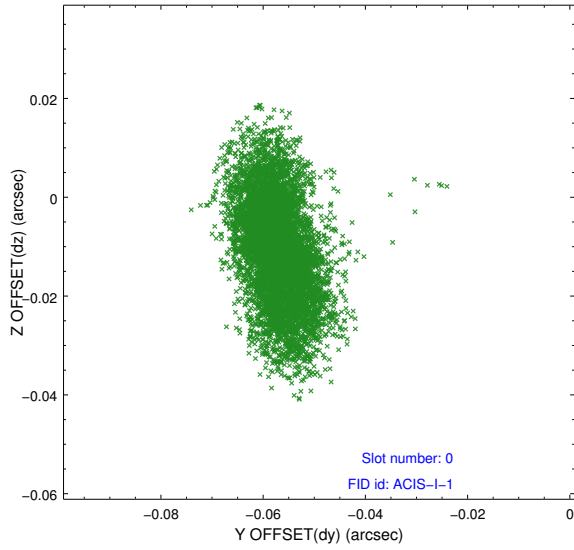


2.4.5 Slot 7

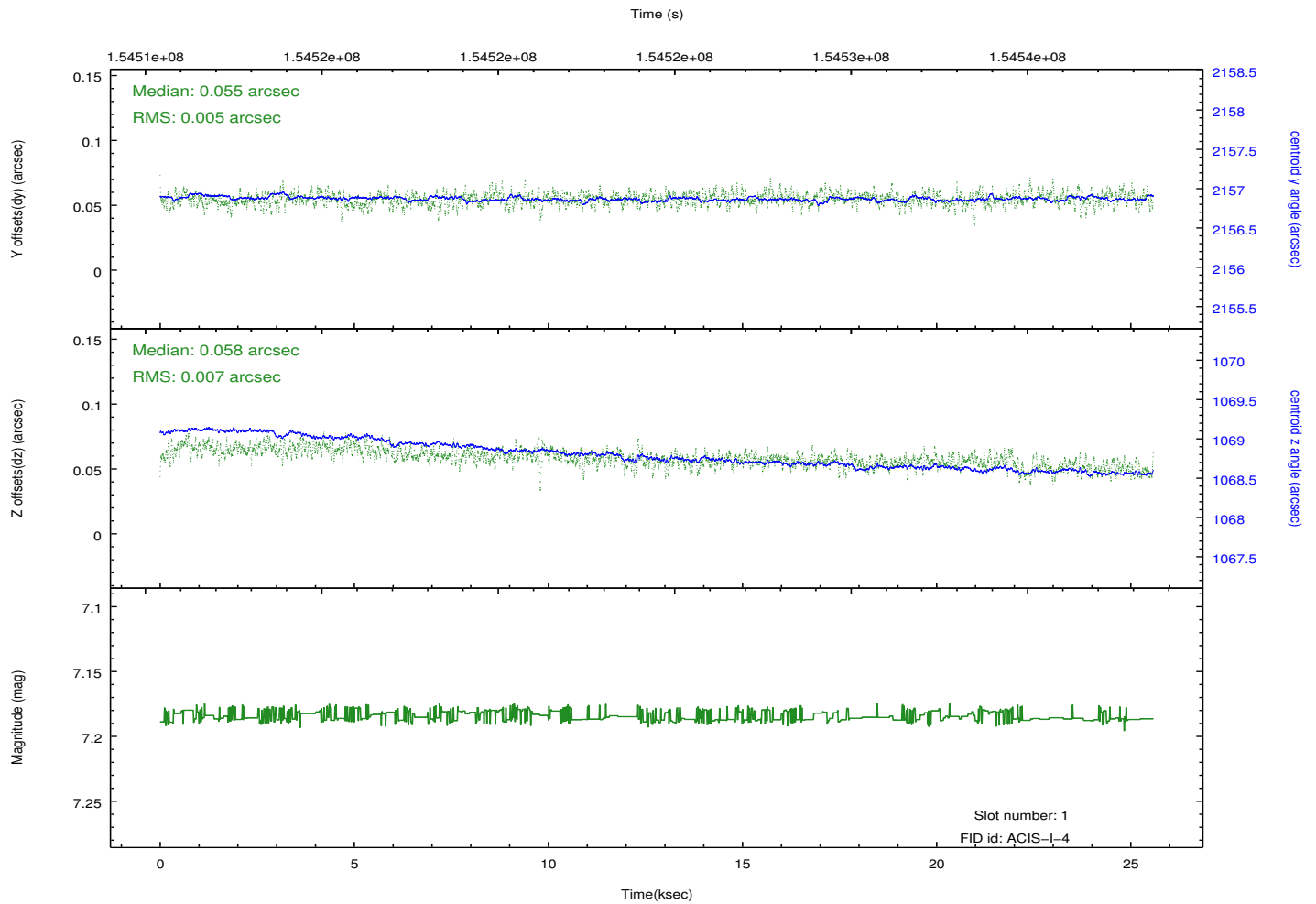
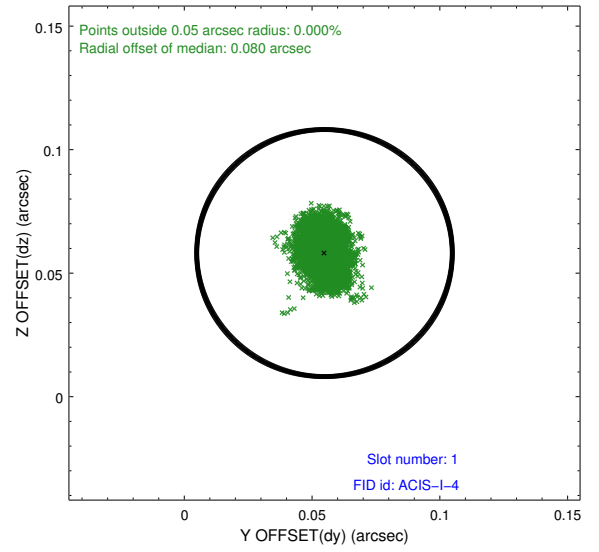
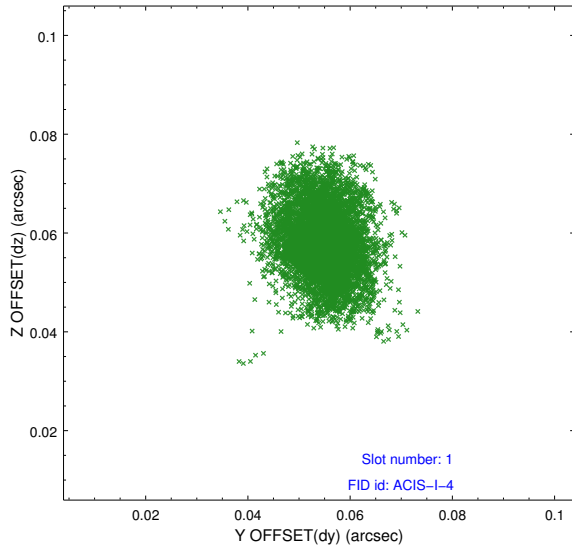


2.5 FID Slots

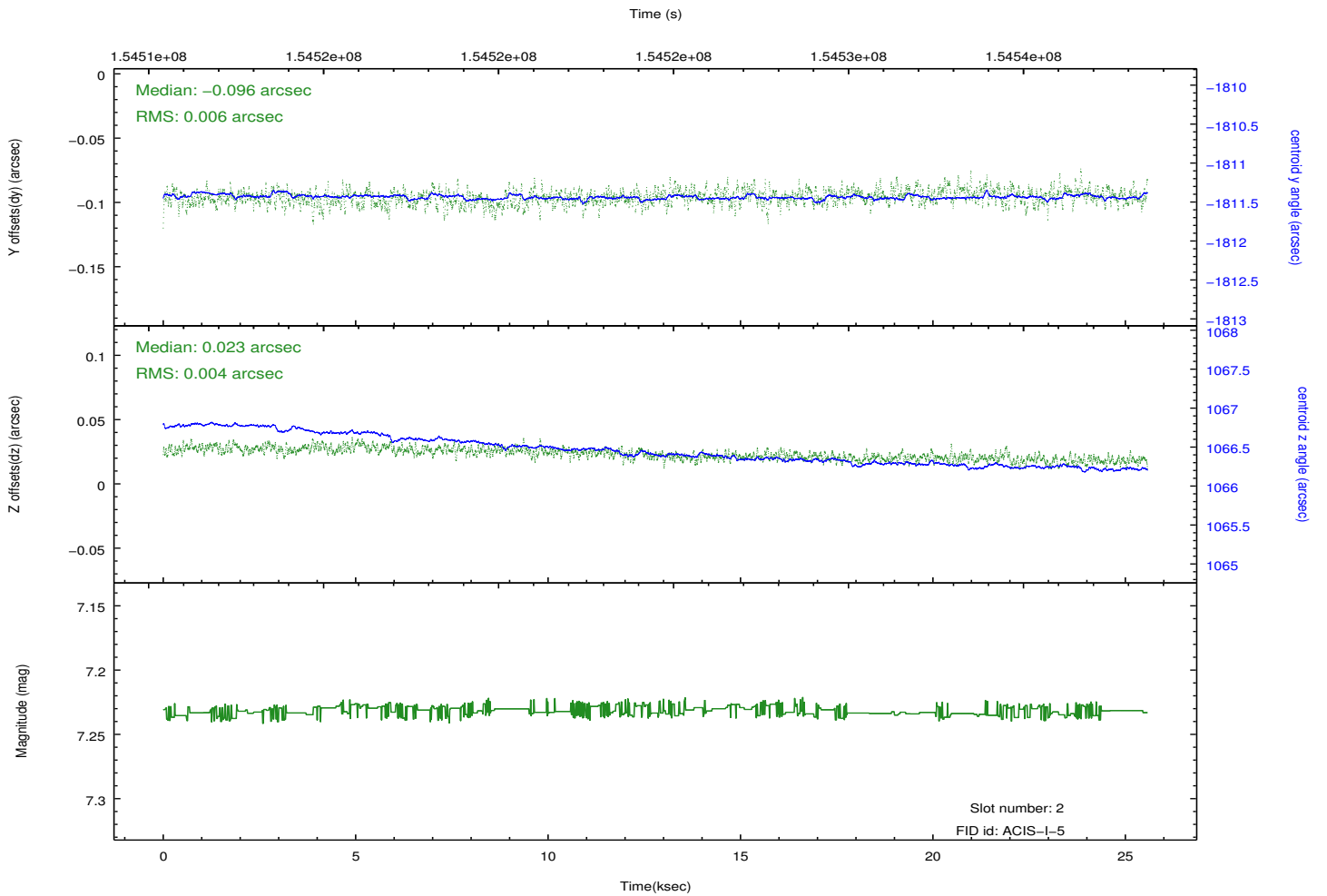
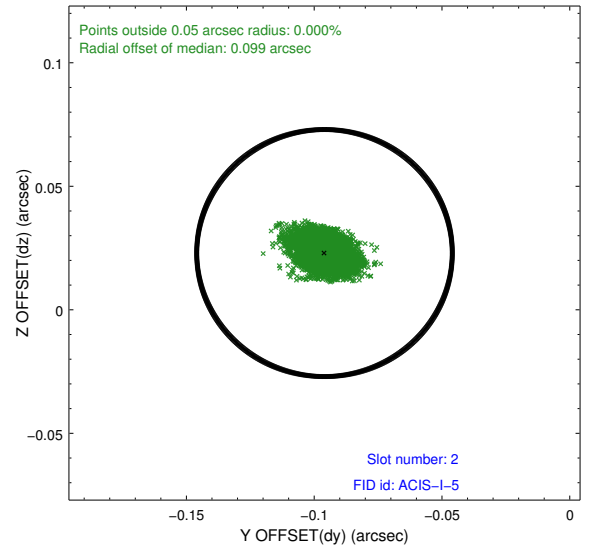
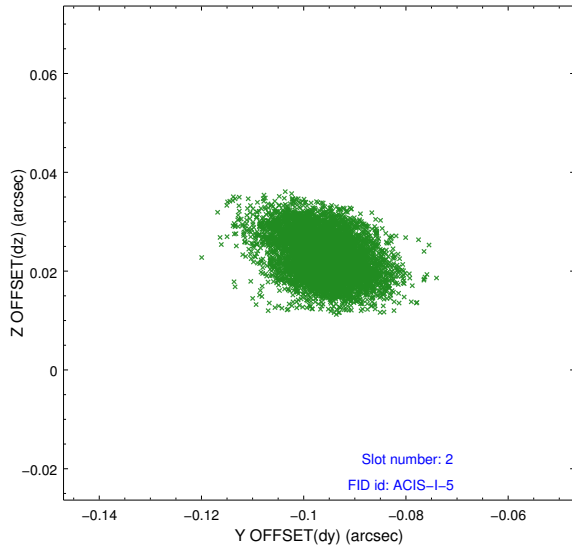
2.5.1 Slot 0



2.5.2 Slot 1



2.5.3 Slot 2



A Summary

A.1 Status

V&V Scientist	Jen Lauer
V&V Date (YYYY-MM-DD)	2012.10.28
V&V Edition	1
V&V Disposition and Status	OK
V&V Charge Time	24.934

A.2 Comments