

V&V Reference Report

L2 ASCDS Version : 8.4.5

Observation 2859 - L2 Version 3
Chandra X-Ray Center

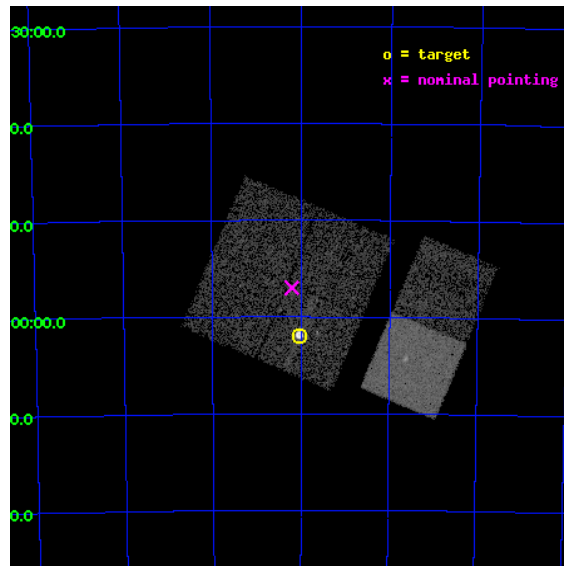
L2 Processing Date : Oct 9 2012

Contents

1	Front	2
2	OBI	3
2.1	OBI	3
2.1.1	Images	3
2.1.2	Bias	3
2.1.3	Parameters	4
2.1.4	Events	4
2.2	Compared Parameters	5
2.3	Aspect	6
2.4	Star Slots	9
2.4.1	Slot 3	9
2.4.2	Slot 4	10
2.4.3	Slot 5	11
2.4.4	Slot 6	12
2.4.5	Slot 7	13
2.5	FID Slots	14
2.5.1	Slot 0	14
2.5.2	Slot 1	15
2.5.3	Slot 2	16
A	Summary	17
A.1	Status	17
A.2	Comments	17

1 Front

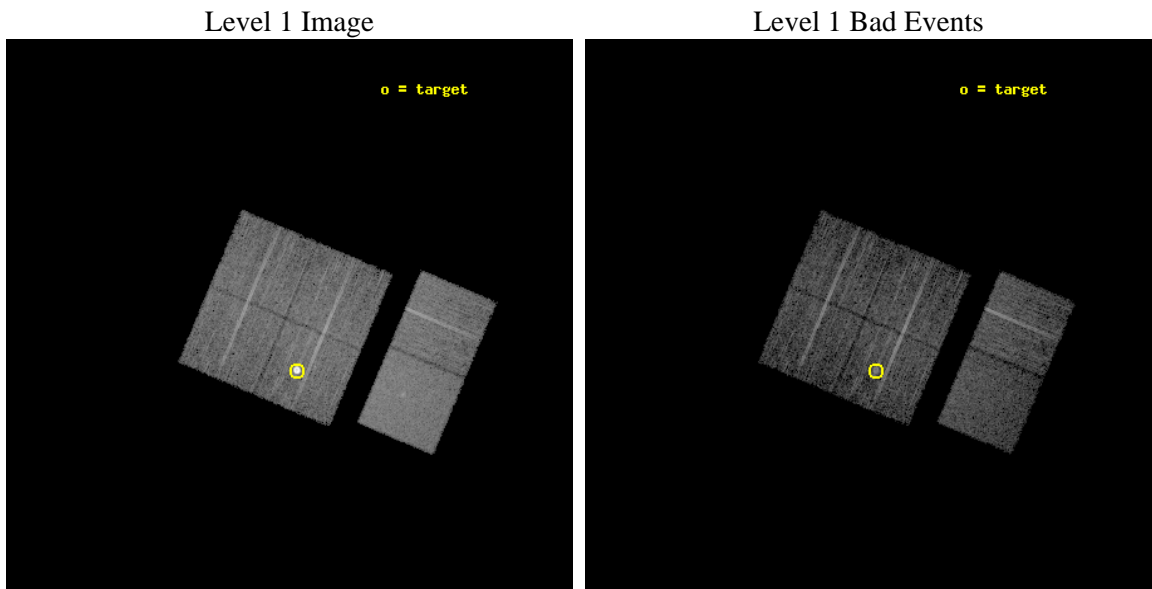
seq_num	590248	Sequence number
obs_id	2859	Observation id
title	AO3B ACIS-I CALIBRATION OBSERVATIONS OF E0102-72	Proposal title
observer	Dr. CXC Calibration	Principal investigator
object	E0102-72.3 [Chip I3, T=120, Offsets=-4,2,0]	Source name
dtcycle	0	
cycle	P	events from which exps? Prim/Second/Both
ra_targ	16.01	Observer's specified target RA [deg]
dec_targ	-72.032028	Observer's specified target Dec [deg]
ra_nom	16.050872089172	Nominal RA [deg]
dec_nom	-71.949823575137	Nominal Dec [deg]
roll_nom	112.94715148079	Nominal Roll [deg]
revision	3	Processing version of data
ontime	7657.5999714732	Sum of GTIs [s]
livetime	7560.6348297813	Livetime [s]
ontime0	7657.5999714732	Sum of GTIs [s]
ontime1	7657.5999714732	Sum of GTIs [s]
ontime2	7657.5999714732	Sum of GTIs [s]
ontime3	7657.5999714732	Sum of GTIs [s]
ontime6	7657.5999714732	Sum of GTIs [s]
ontime7	7657.5999714732	Sum of GTIs [s]
l2events	76430	Number of level 2 events



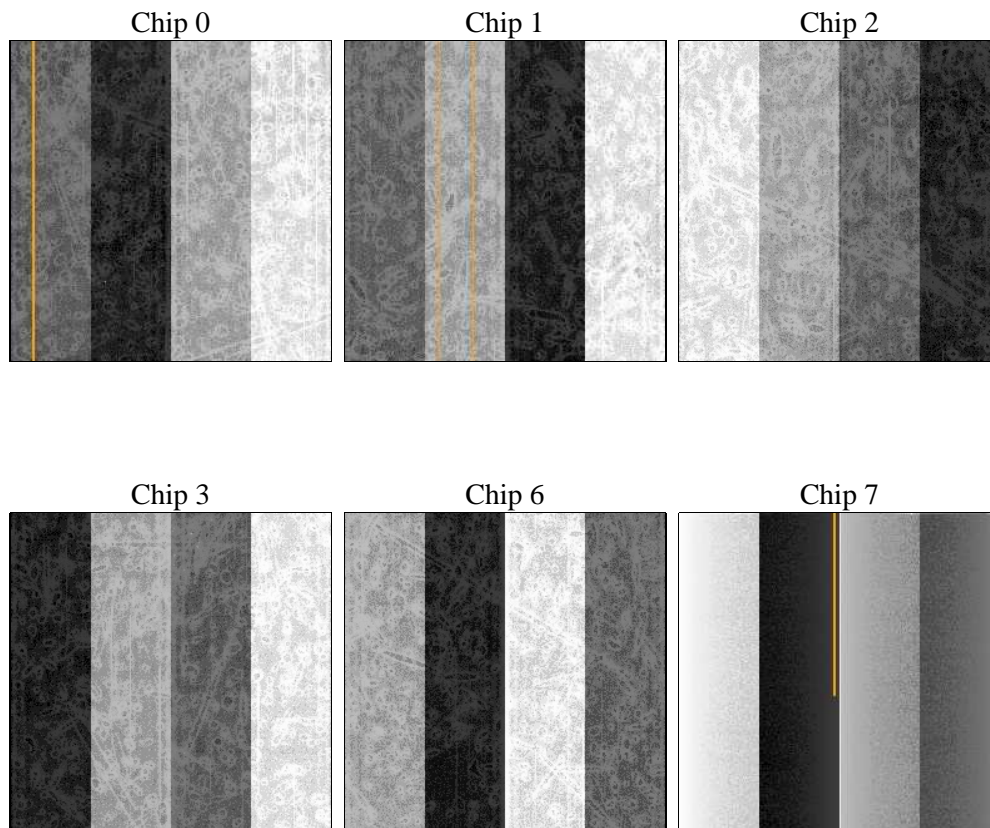
2 OBI

2.1 OBI

2.1.1 Images



2.1.2 Bias



2.1.3 Parameters

obi_num	0	Obi number	sched_exp_time	7900.000000	[s] Scheduled observation exposure time
ascdsver	8.4.5	Processing system revision	ontime	7657.5999714732	Sum of GTIs [s]
caldbver	4.5.2	 	ontime0	7657.5999714732	Sum of GTIs [s]
date	2012-10-10T00:53:51	Date and time of file creation	ontime1	7657.5999714732	Sum of GTIs [s]
revision	3	Processing version of data	ontime2	7657.5999714732	Sum of GTIs [s]
			ontime3	7657.5999714732	Sum of GTIs [s]
			ontime6	7657.5999714732	Sum of GTIs [s]
			ontime7	7657.5999714732	Sum of GTIs [s]
			l1events	334492	Number of level 1 events

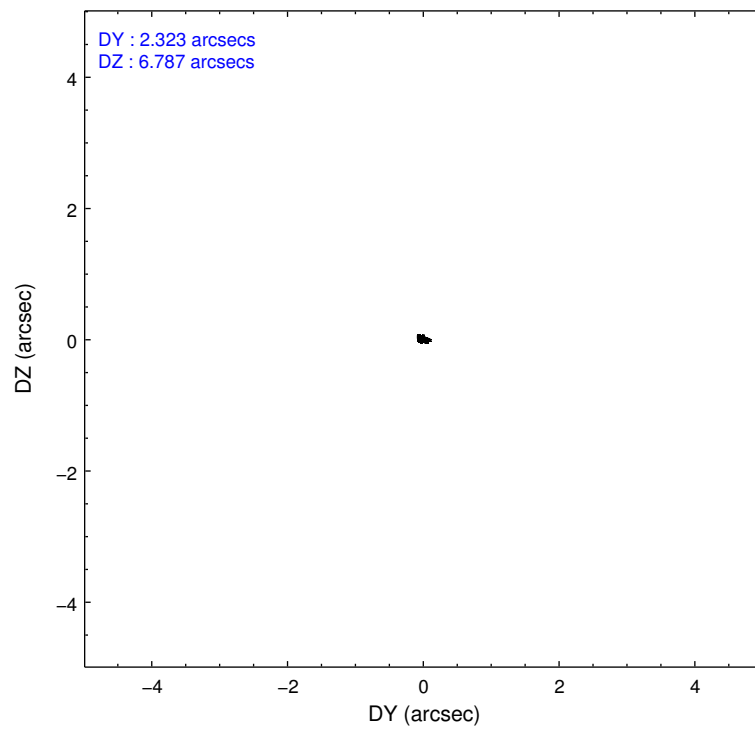
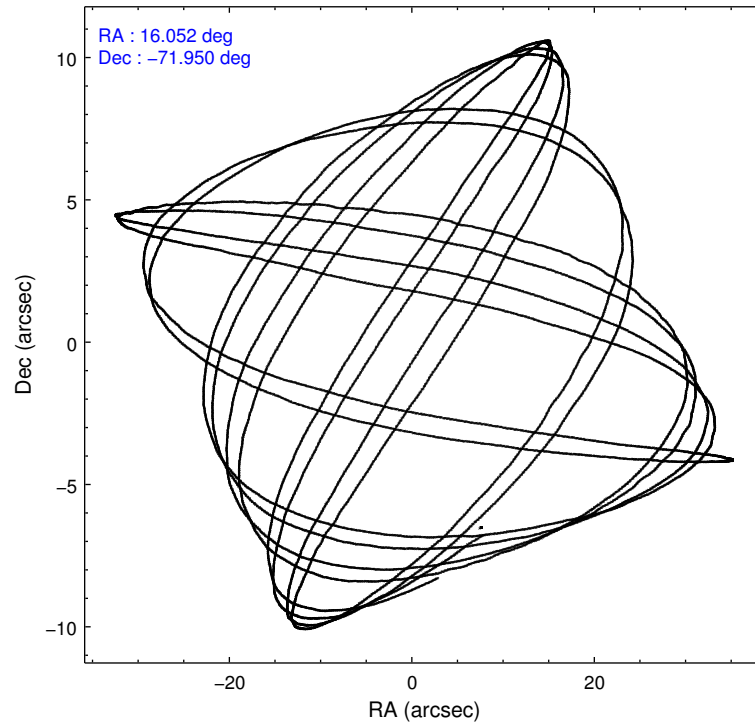
2.1.4 Events

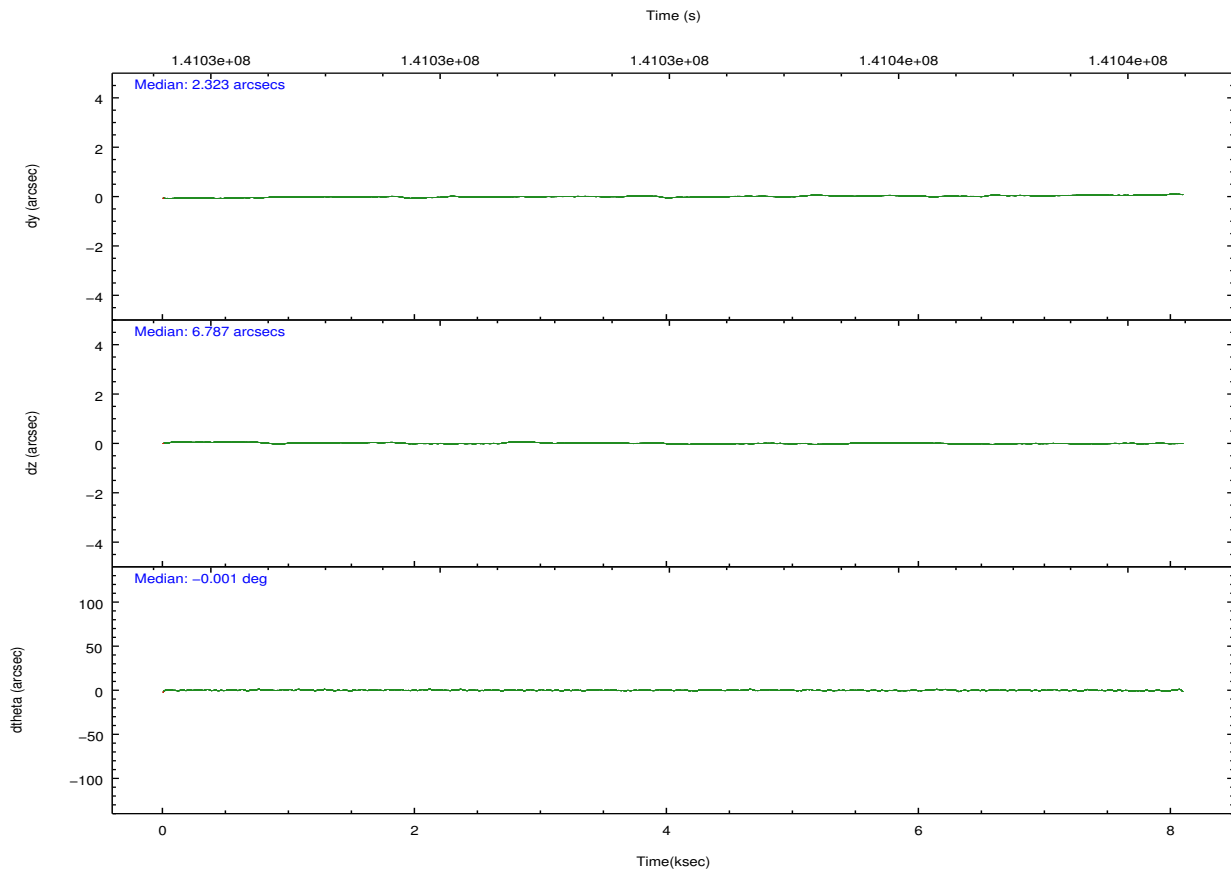
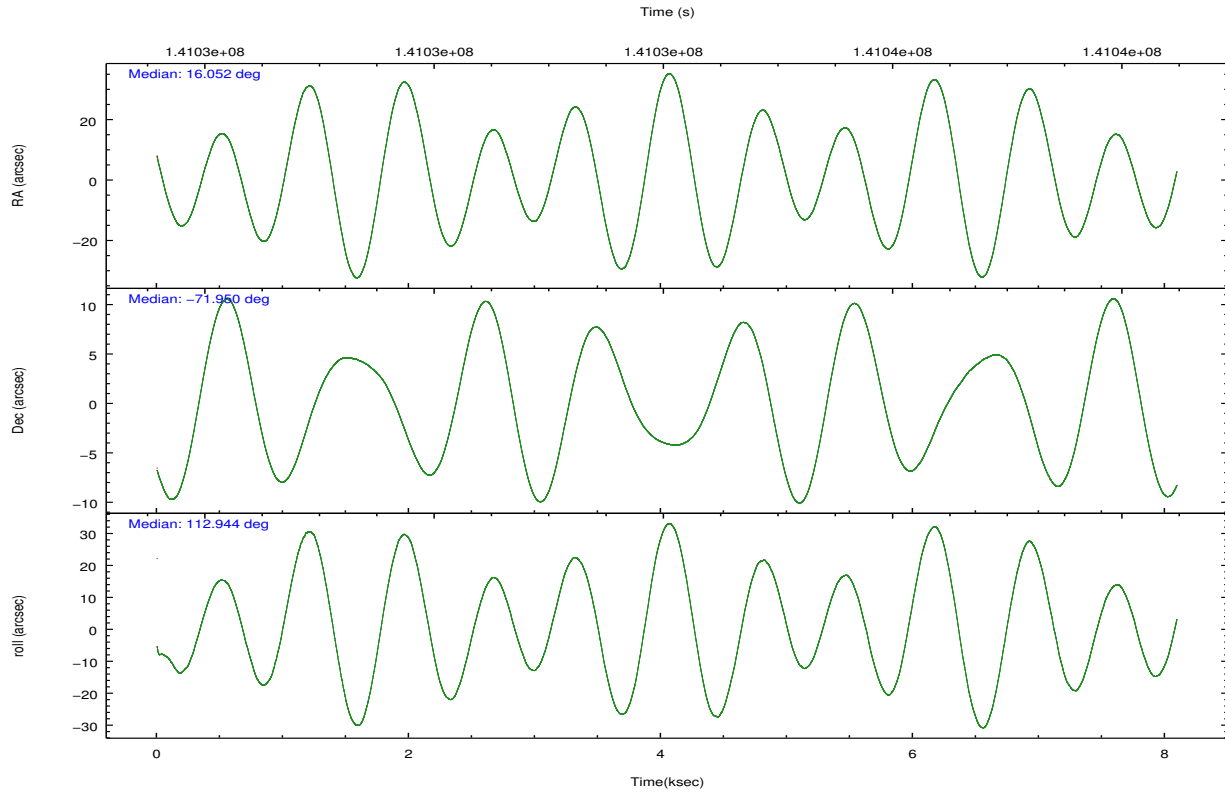
	ccd 0	ccd 1	ccd 2	ccd 3	ccd 6	ccd 7		ccd 0	ccd 1	ccd 2	ccd 3	ccd 6	ccd 7
level 1 events	46325	43934	49046	75477	54219	65491	grade 0 events	2440	2541	2486	25353	2485	2679
rejected events	40423	37879	43159	44053	48205	38184		5%	5%	5%	33%	4%	4%
rejected %	87%	86%	87%	58%	88%	58%	grade 1 events	23	24	18	249	22	50
								0%	0%	0%	0%	0%	0%
							grade 2 events	1320	1224	1217	2987	1236	5428
								2%	2%	2%	3%	2%	8%
							grade 3 events	570	580	540	950	534	2452
								1%	1%	1%	1%	0%	3%
							grade 4 events	527	573	542	980	514	2522
								1%	1%	1%	1%	0%	3%
							grade 5 events	1775	1958	1745	2037	2257	6401
								3%	4%	3%	2%	4%	9%
							grade 6 events	1051	1140	1107	1179	1252	14239
								2%	2%	2%	1%	2%	21%
							grade 7 events	38619	35894	41391	41742	45919	31720
								83%	81%	84%	55%	84%	48%

2.2 Compared Parameters

Parameter	Planned	Actual	Parameter	Planned	Actual
Instrument	ACIS	ACIS	Obspar format version number	7	7
Detector	ACIS-012367	ACIS-012367	Obspar file type	PREDICTED	ACTUAL
Grating	NONE	NONE	Obspar update status	NONE	UPDATED
Data mode	FAINT	FAINT	Number of optional ACIS chips dropped	0	0
Observation mode	POINTING	POINTING	On-chip summing requested	N	N
[deg] Pointing RA	16.121848	16.05087208917176	Subarray requested	NONE	NONE
[deg] Pointing Dec	-71.966194	-71.94982357513695	Alternating exposures requested	N	N
[deg] Pointing Roll	112.805956	112.9471514807939	[s] Primary exposure time	0.000000	3.2
[s] Window start time (MET)	139276864.184000	139276864.184000			
[s] Window stop time (MET)	141782464.184000	141782464.184000			
[mm] SIM focus pos	-0.782348	-0.7809083437167272			
[mm] SIM defocus	0	0.001439871863259334			
[mm] SIM translation stage pos	-233.592463	-233.5874344608287			
[mm] SIM translation stage offset	0	-0.005018542100998502			
[s] Observation start time (MET)	141030183.184000	141029807.38708			
Observation start date	2002-06-21T07:01:59	2002-06-21T06:56:47			
[s] Observation end time (MET)	141038083.184000	141038217.51243			
Observation end date	2002-06-21T09:13:39	2002-06-21T09:16:57			
Read mode	TIMED	TIMED			

2.3 Aspect



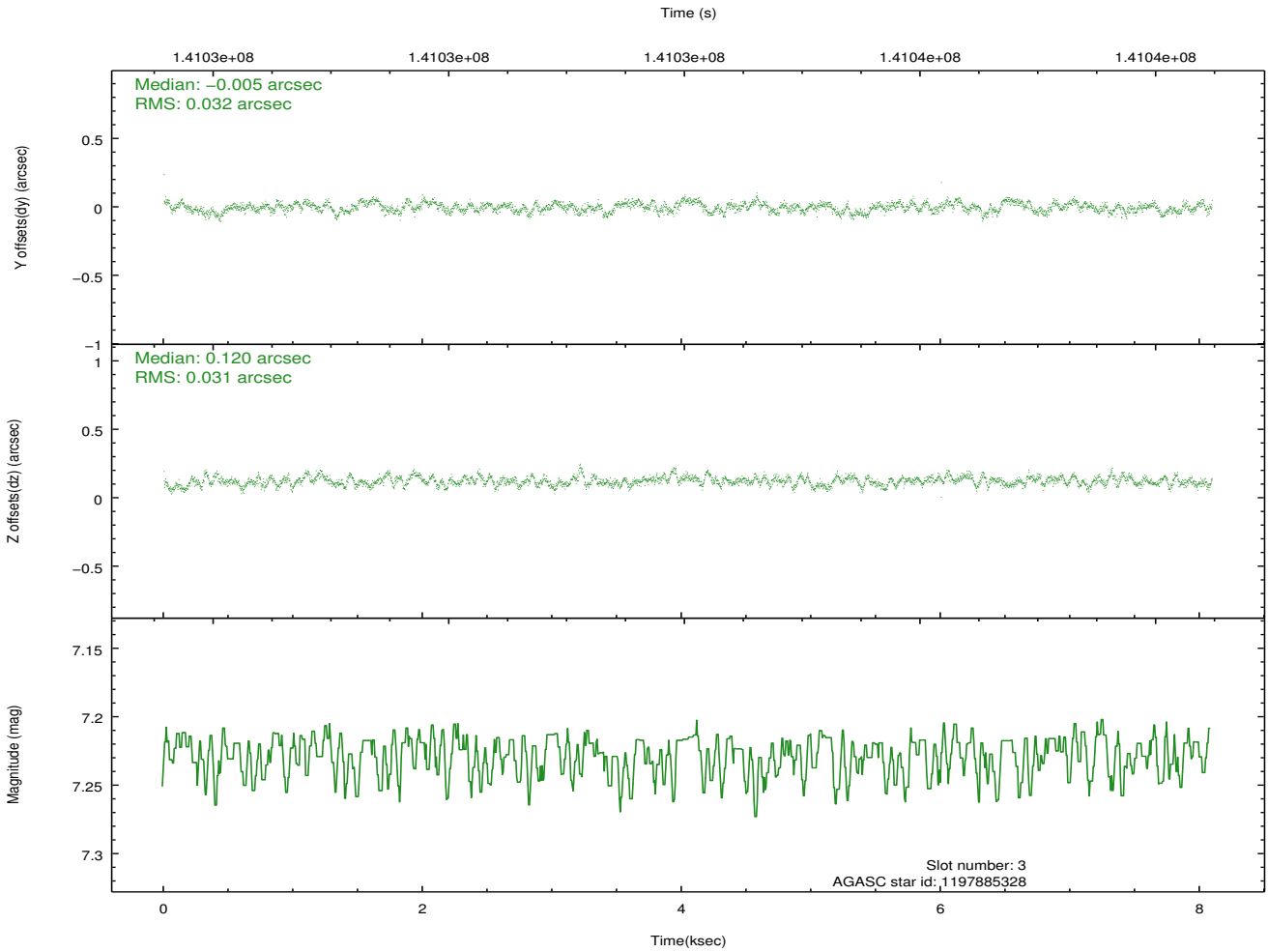
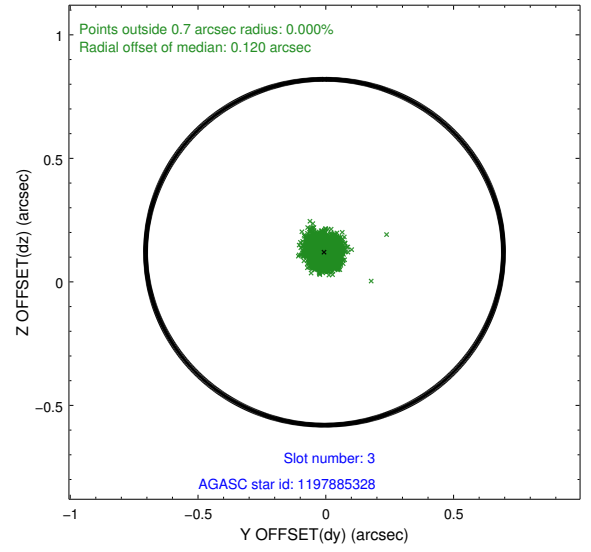
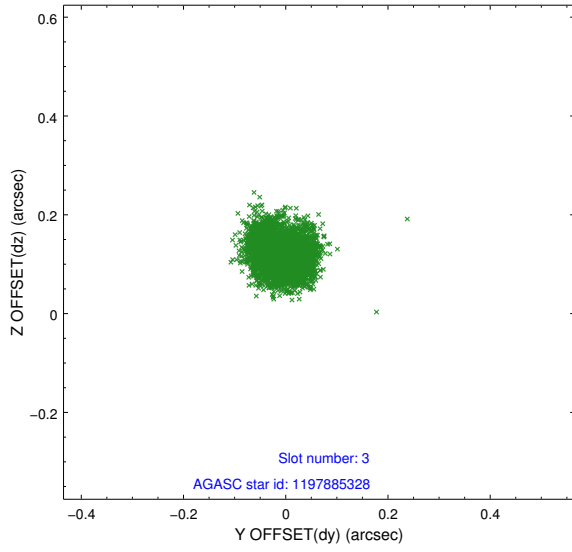


Slot Statistics

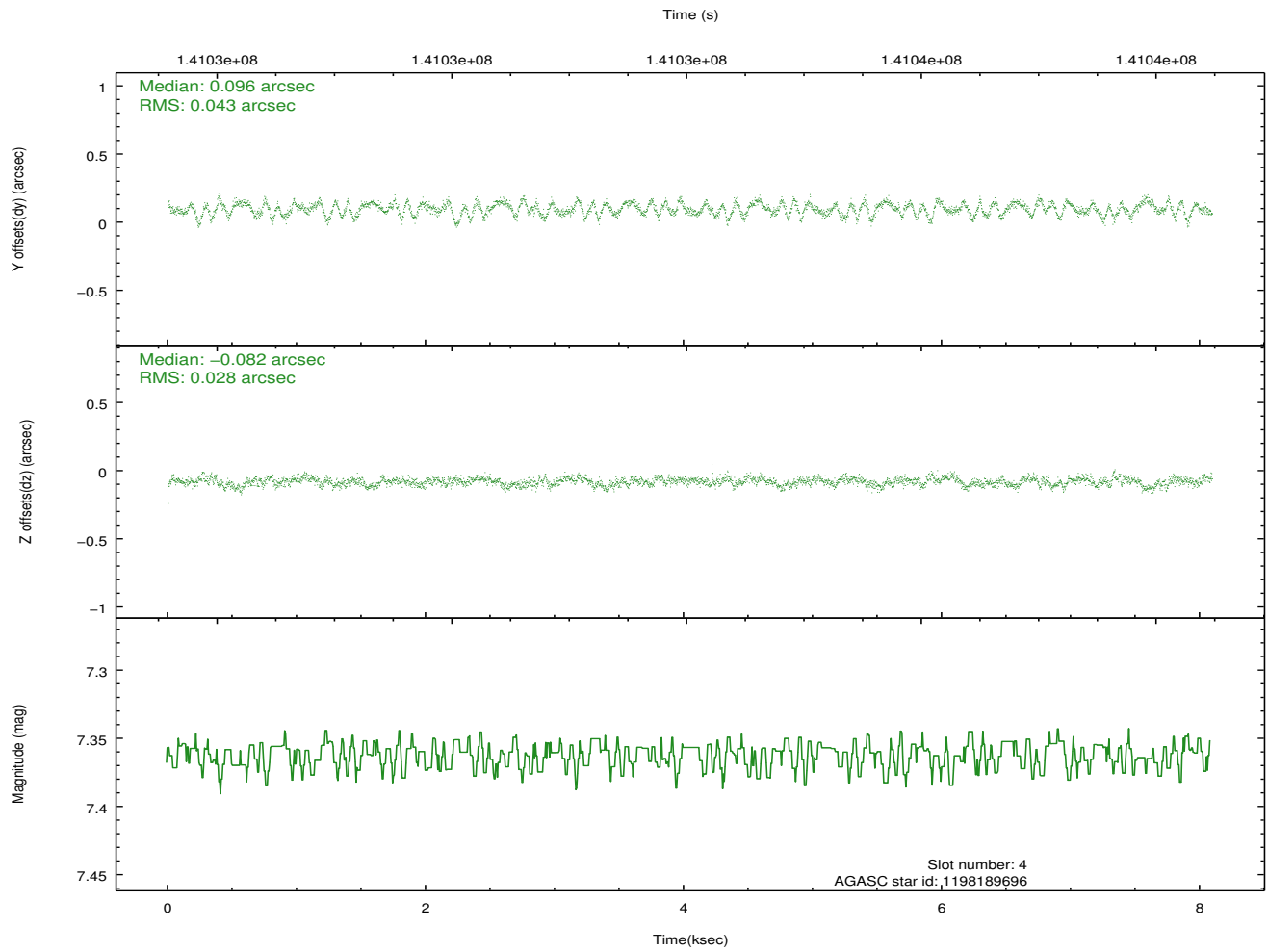
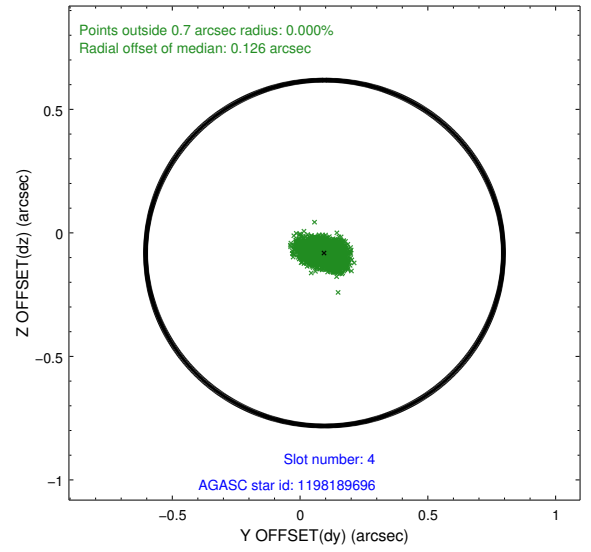
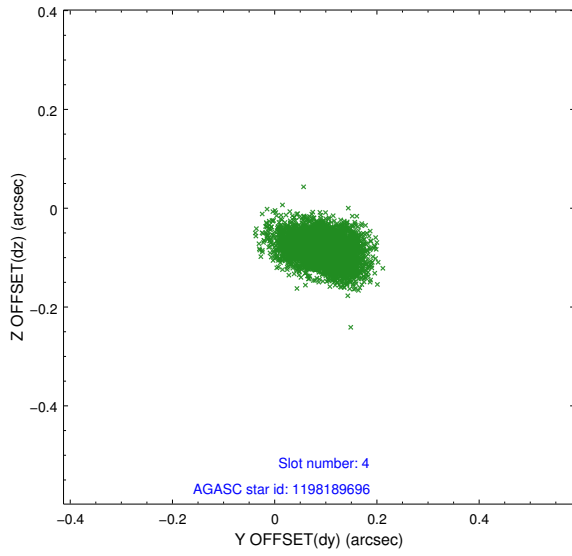
slot	status	id	mag	n_pts	med_dy	med_dz	dr1	dr2	ra	dec	mean_y	mean_z
0	FID	ACIS-I-1	7.24	1975	-0.006	0.016	0.006	0.011	0.000000	0.000000	937.46	-830.18
1	FID	ACIS-I-5	7.24	1975	-0.046	0.046	0.006	0.010	0.000000	0.000000	-1810.26	1067.06
2	FID	ACIS-I-6	7.26	1975	-0.039	0.008	0.006	0.010	0.000000	0.000000	402.28	1712.25
3	GUIDE	1197885328	7.23	3949	-0.005	0.120	0.048	0.076	16.283090	-71.733943	700.83	-491.01
4	GUIDE	1198189696	7.36	3949	0.096	-0.082	0.054	0.088	15.223750	-72.697522	-2060.03	1910.17
5	GUIDE	1197750936	7.57	3948	-0.065	-0.117	0.059	0.093	15.387940	-71.549550	1702.16	192.69
6	GUIDE	1197884712	8.30	3948	0.051	-0.032	0.064	0.107	16.087398	-72.252690	-934.89	435.38
7	GUIDE	1197878768	9.62	3947	-0.074	0.111	0.101	0.164	16.656786	-71.304581	1954.52	-1490.16

2.4 Star Slots

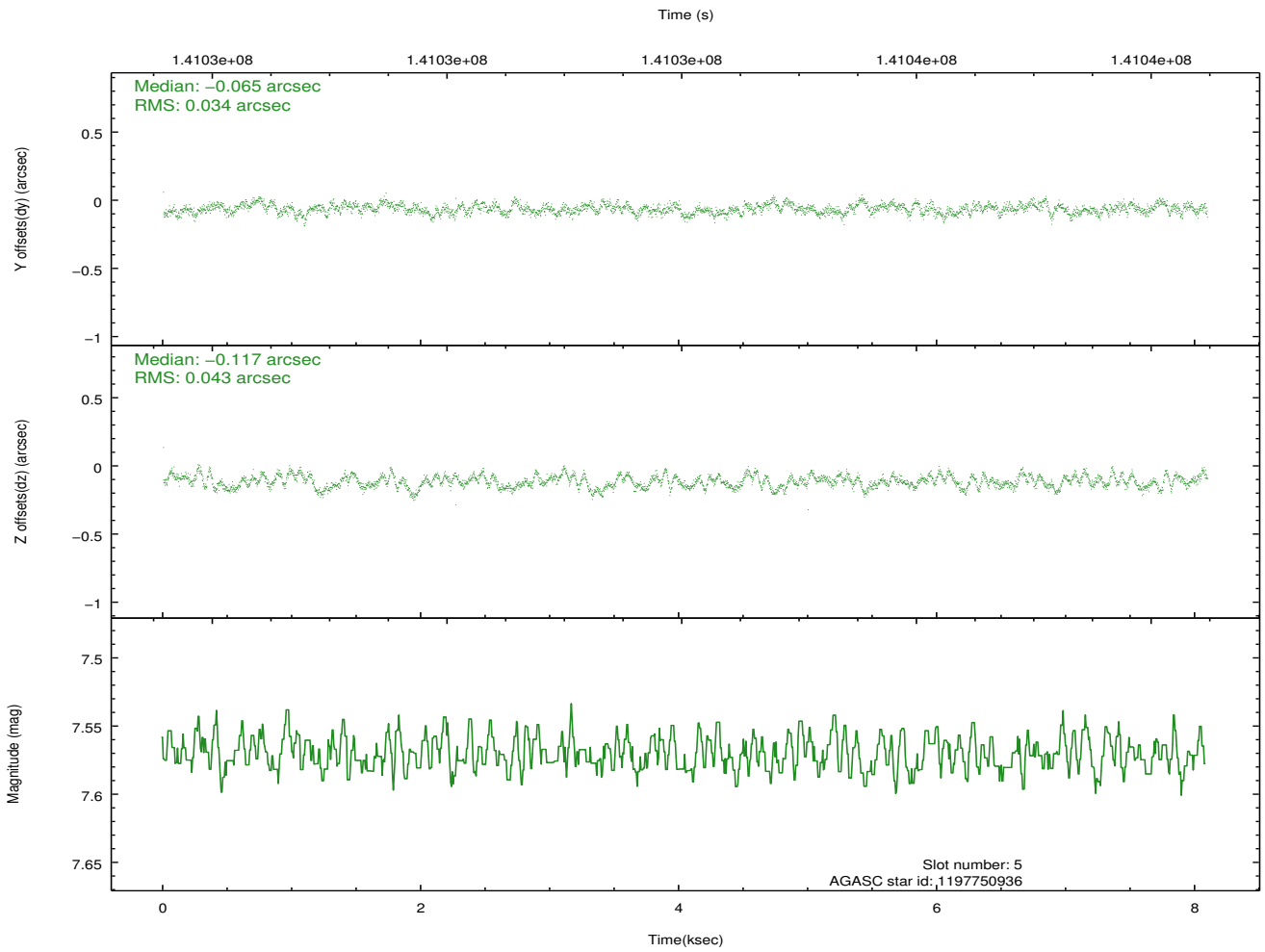
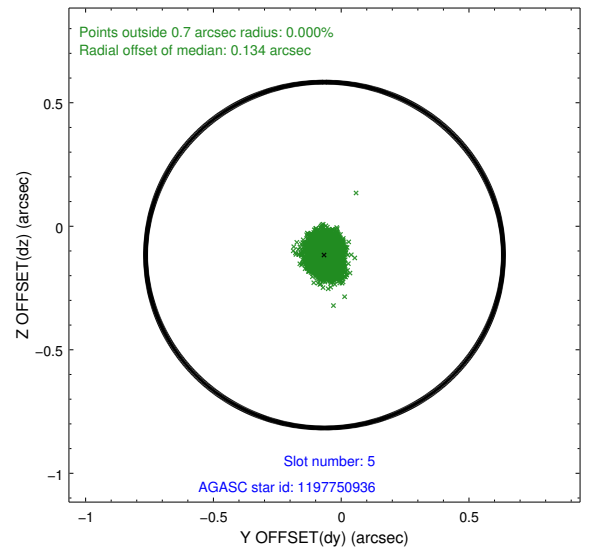
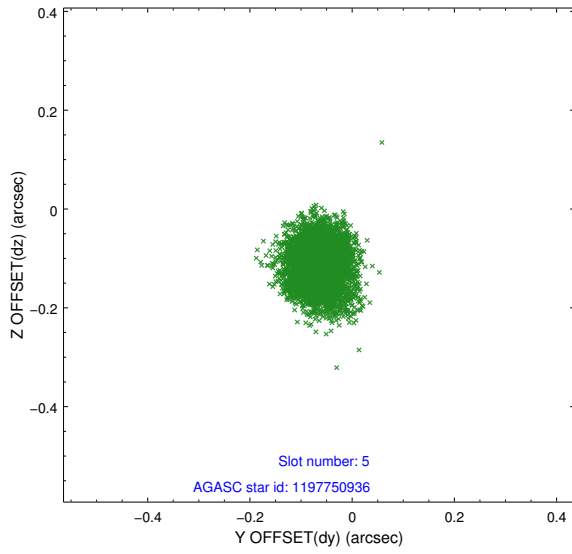
2.4.1 Slot 3



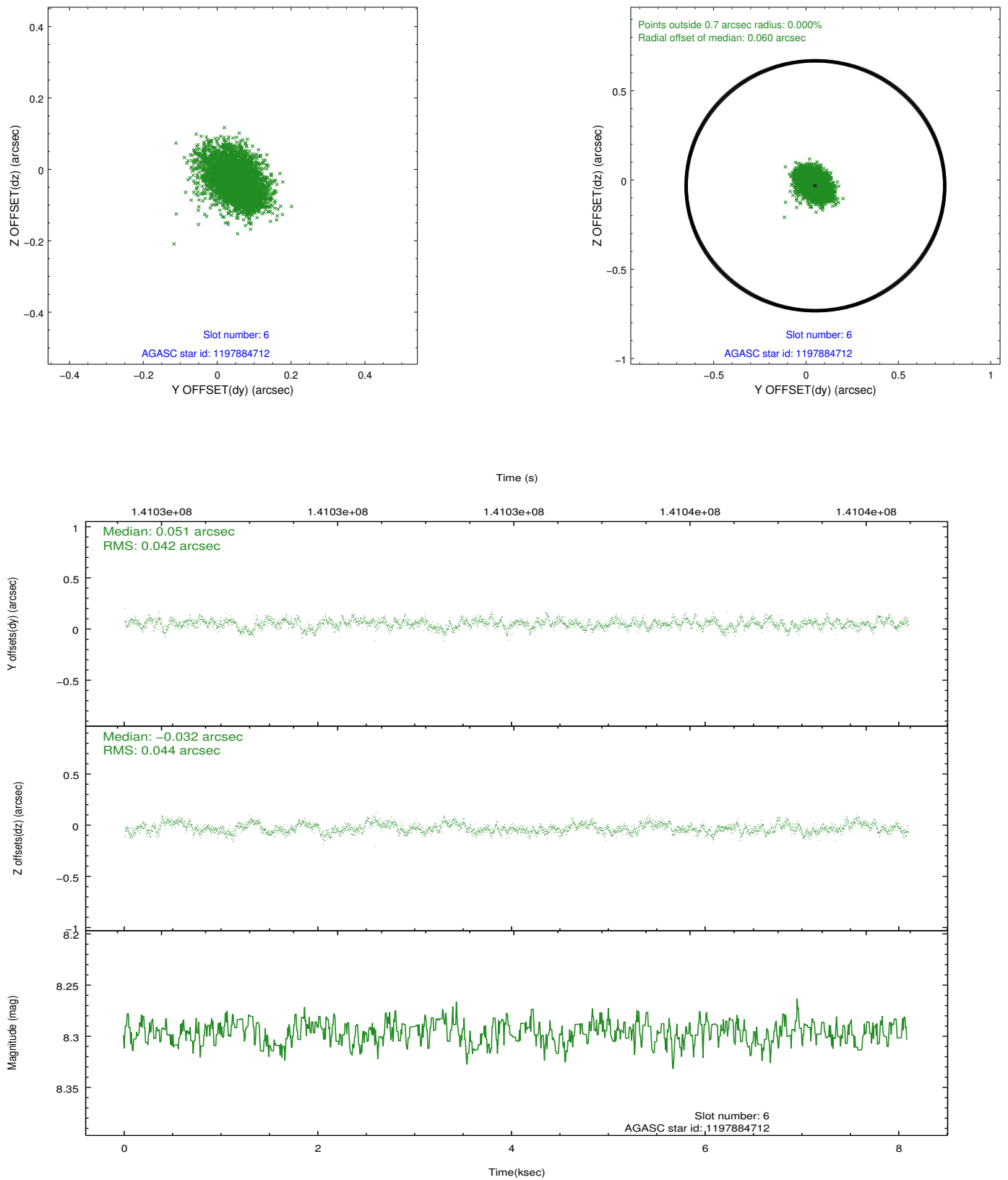
2.4.2 Slot 4



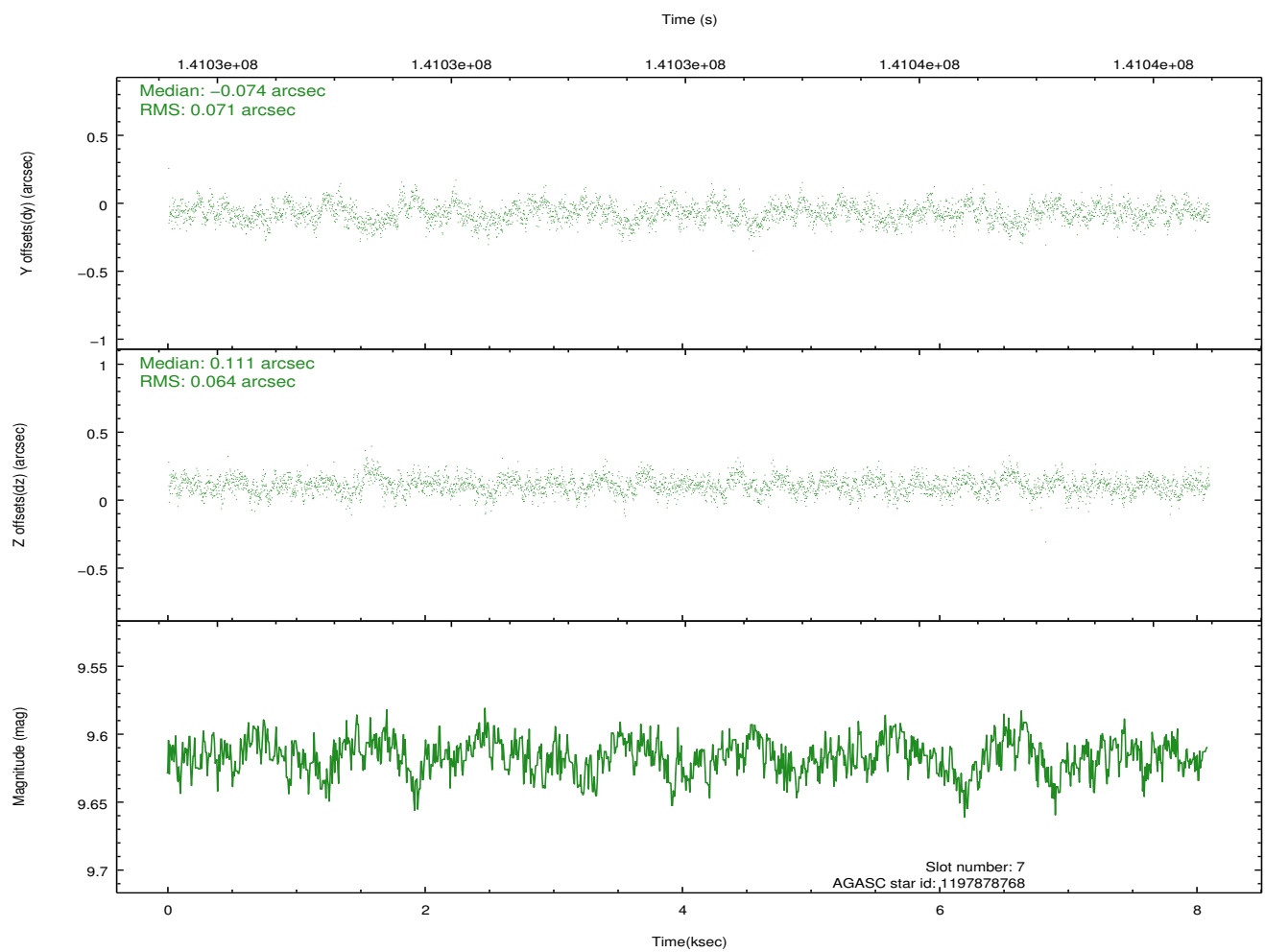
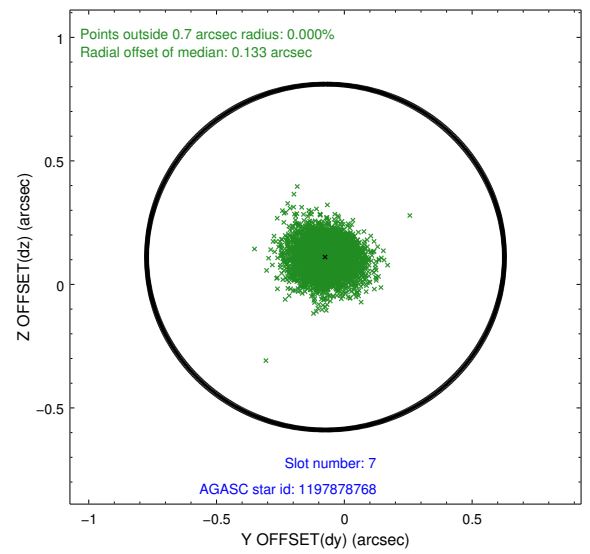
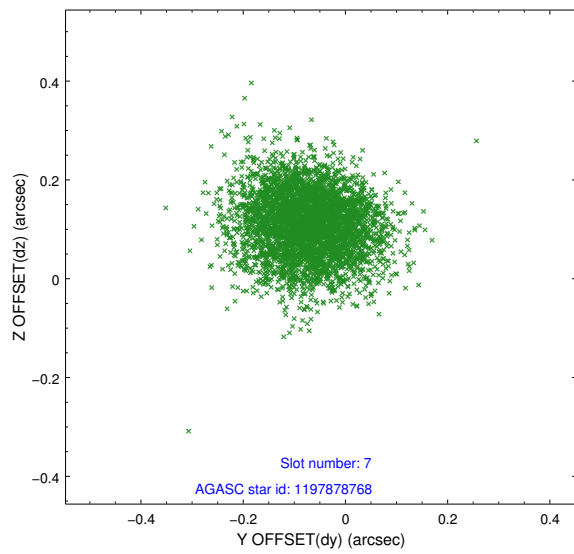
2.4.3 Slot 5



2.4.4 Slot 6

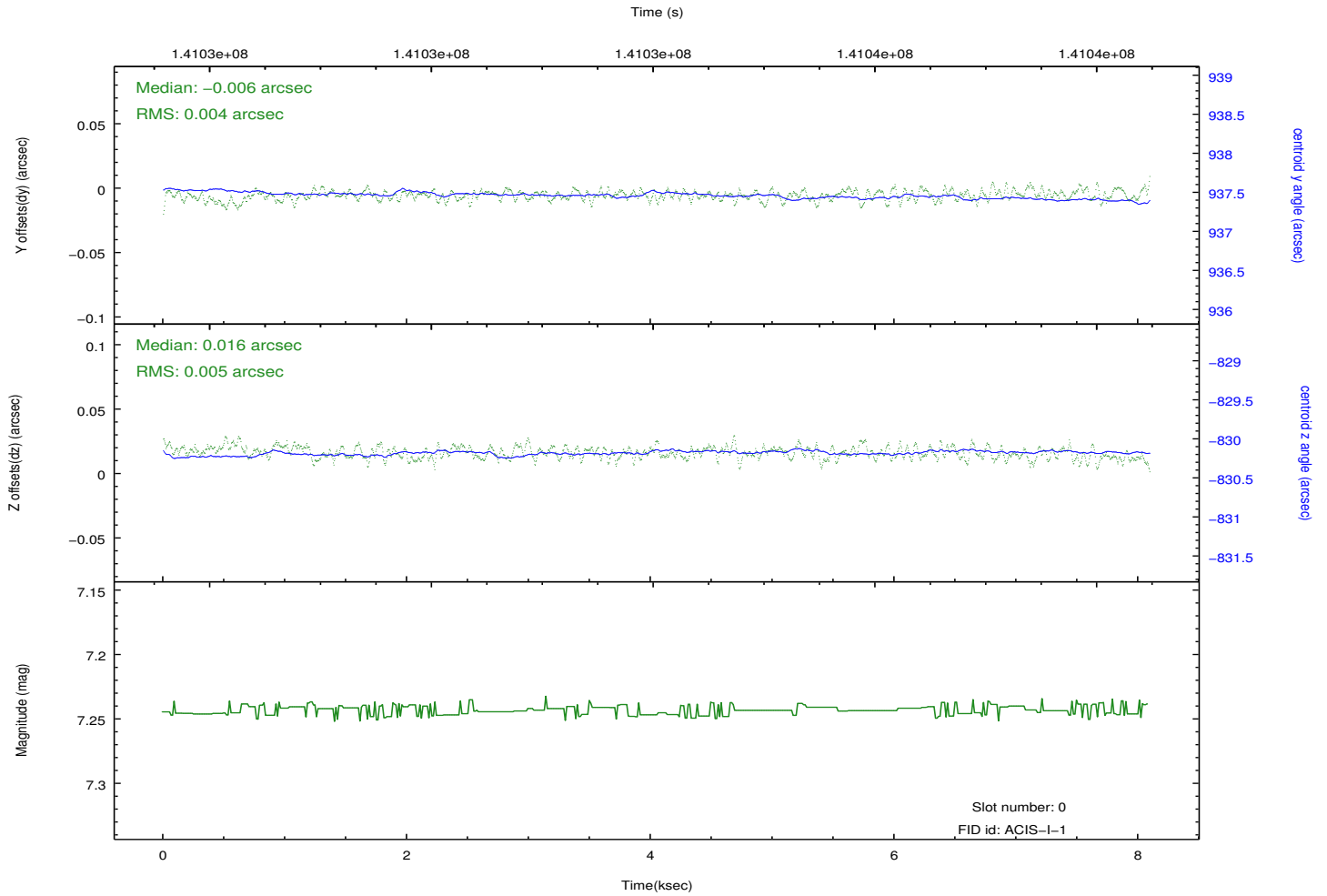
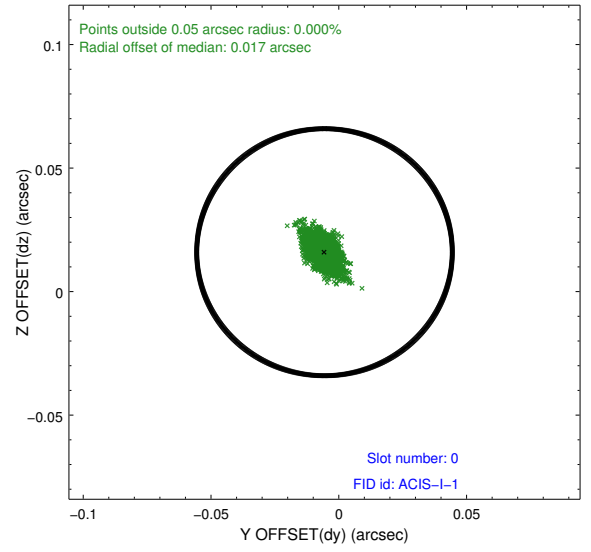
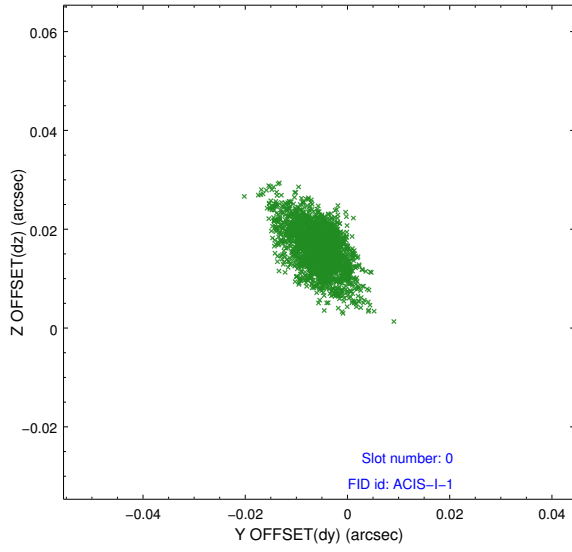


2.4.5 Slot 7

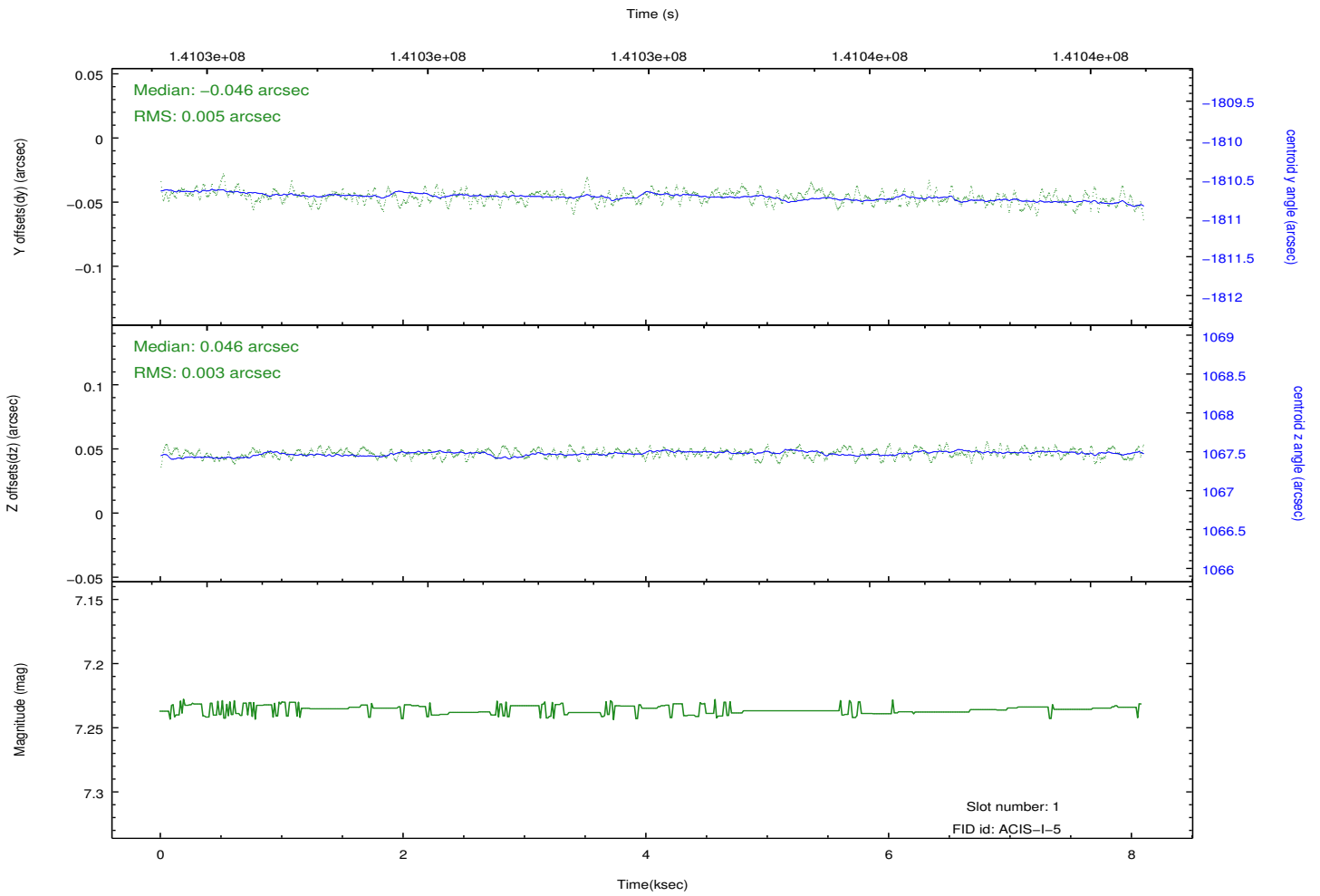
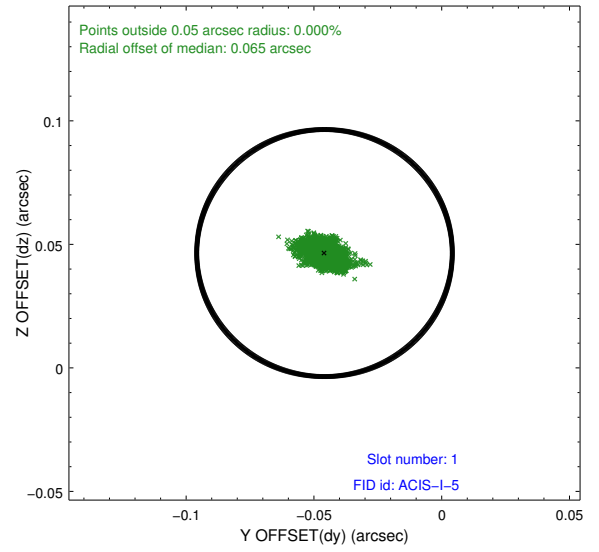
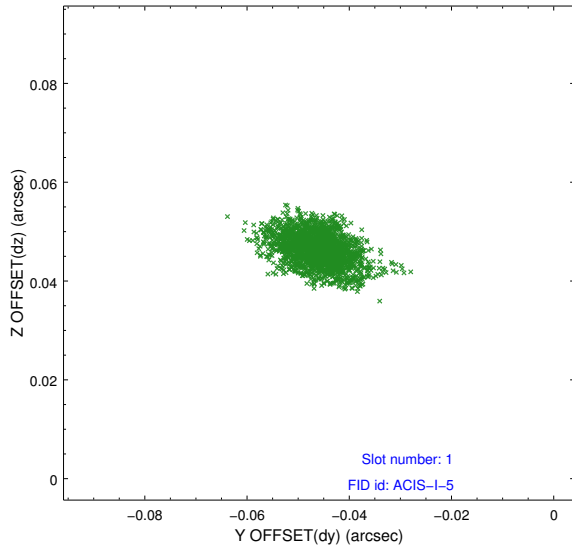


2.5 FID Slots

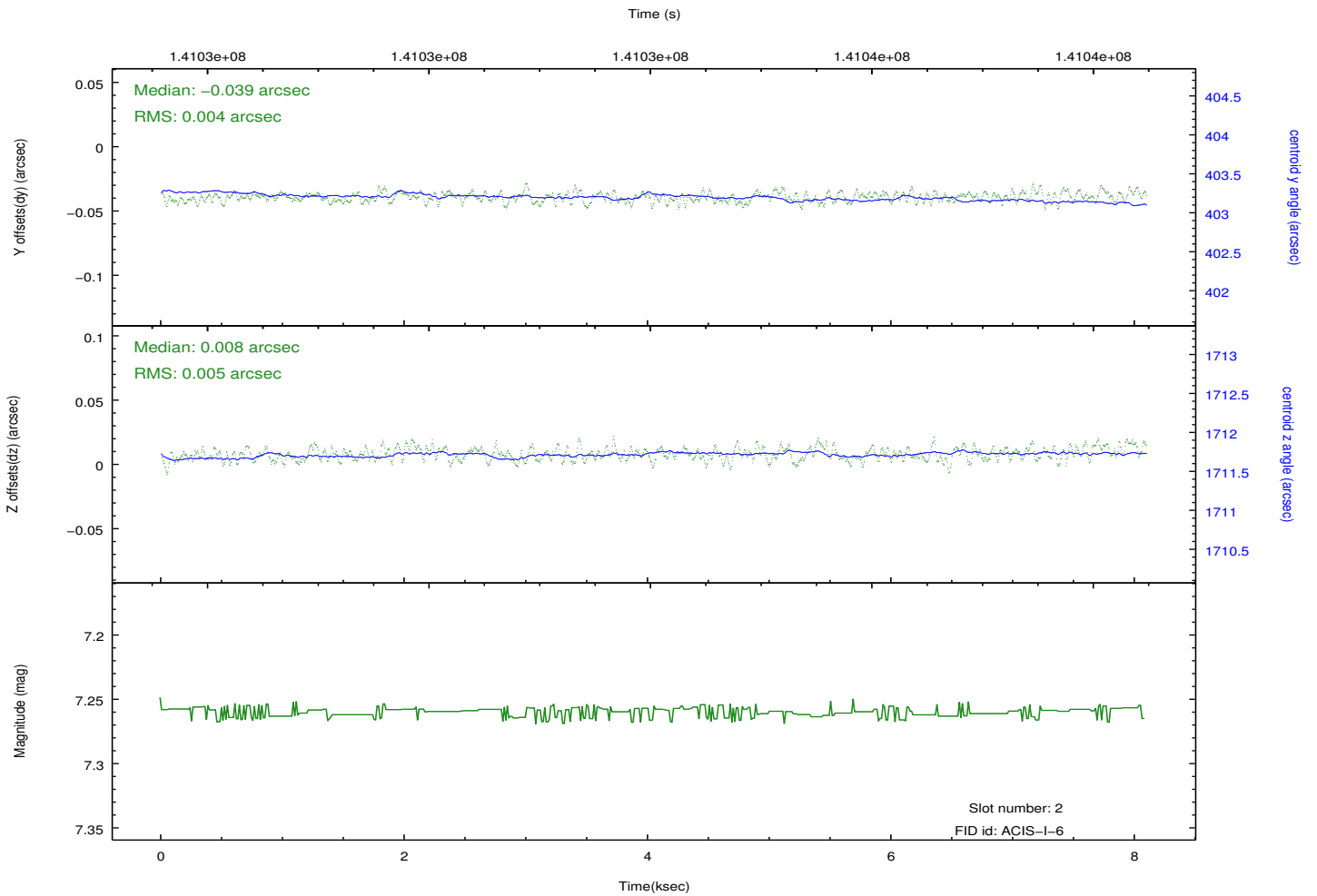
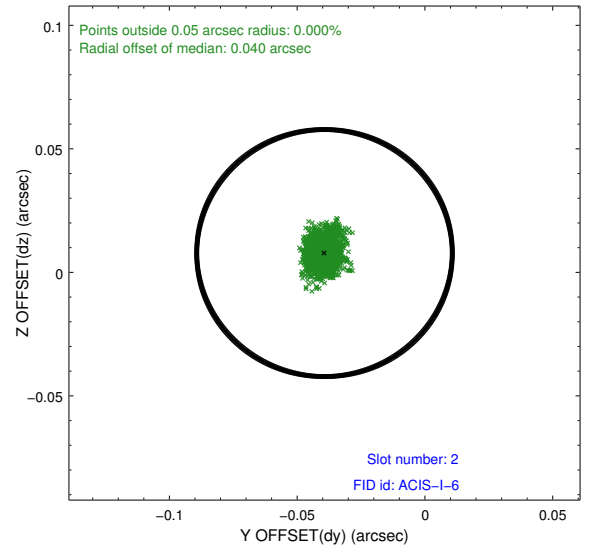
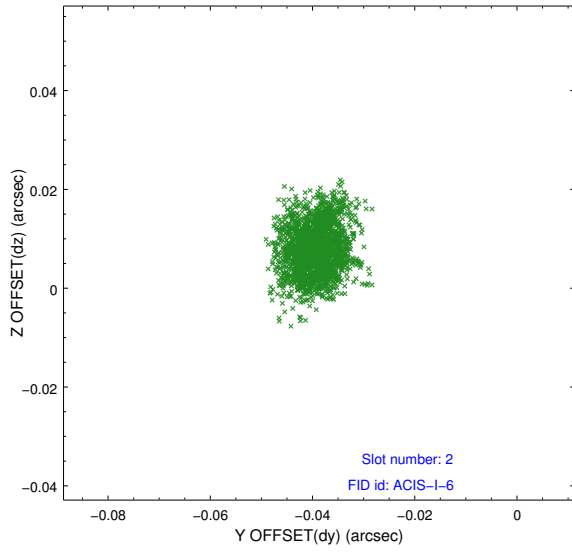
2.5.1 Slot 0



2.5.2 Slot 1



2.5.3 Slot 2



A Summary

A.1 Status

V&V Scientist	Jen Lauer
V&V Date (YYYY-MM-DD)	2012.10.19
V&V Edition	1
V&V Disposition and Status	OK
V&V Charge Time	7.66

A.2 Comments

Window constraint satisfied.