

V&V Reference Report

L2 ASCDS Version : 8.4.5

Observation 2879 - L2 Version 3
Chandra X-Ray Center

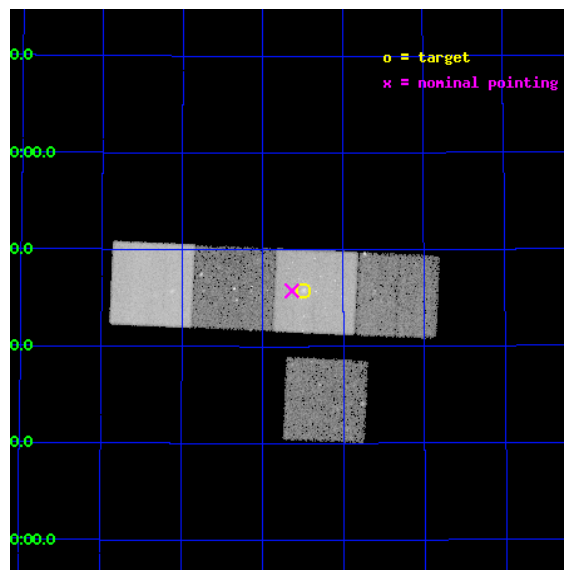
L2 Processing Date : Oct 17 2012

Contents

1	Front	2
2	OBI	3
2.1	OBI	3
2.1.1	Images	3
2.1.2	Bias	3
2.1.3	Parameters	4
2.1.4	Events	4
2.2	Compared Parameters	5
2.3	Aspect	6
2.4	Star Slots	9
2.4.1	Slot 3	9
2.4.2	Slot 4	10
2.4.3	Slot 5	11
2.4.4	Slot 6	12
2.4.5	Slot 7	13
2.5	FID Slots	14
2.5.1	Slot 0	14
2.5.2	Slot 1	15
2.5.3	Slot 2	16
A	Summary	17
A.1	Status	17
A.2	Comments	17

1 Front

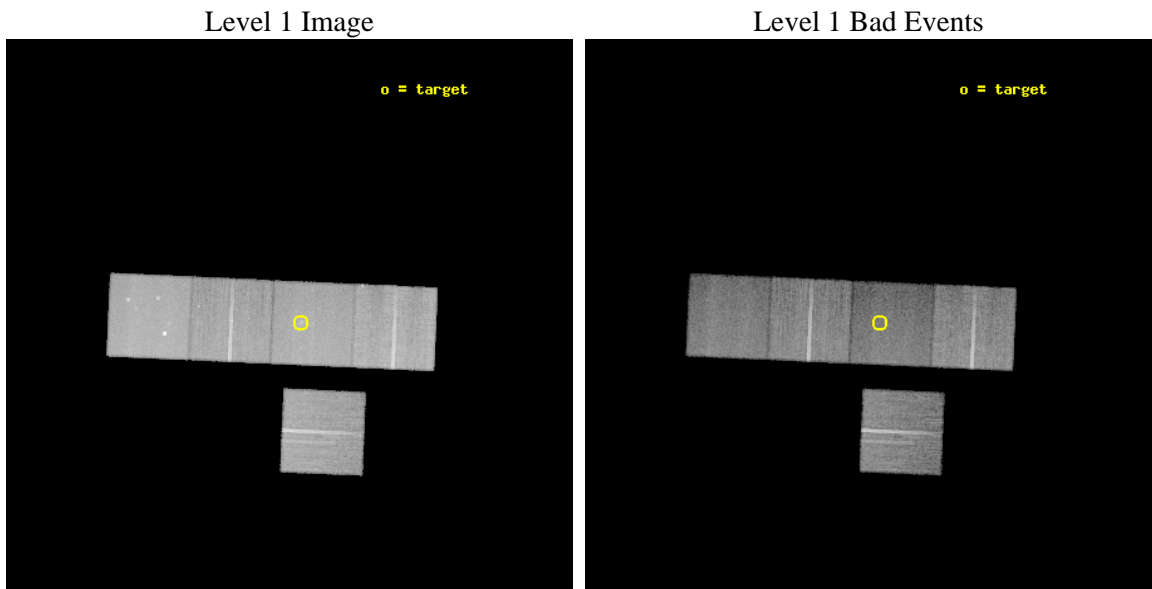
seq_num	600216	Sequence number
obs_id	2879	Observation id
title	RESOLVING THE X-RAY BINARY POPULATION IN EARLY-TYPE GALAXIES	Propo
observer	Dr. CRAIG SARAZIN	Principal investigator
object	NGC5866 (M102)	Source name
dtcycle	0	
cycle	P	events from which exps? Prim/Second/Both
ra_targ	226.6225	Observer's specified target RA [deg]
dec_targ	55.763694	Observer's specified target Dec [deg]
ra_nom	226.65938067197	Nominal RA [deg]
dec_nom	55.762873599434	Nominal Dec [deg]
roll_nom	2.5436164177457	Nominal Roll [deg]
revision	3	Processing version of data
ontime	34180.59993425	Sum of GTIs [s]
livetime	33734.005232718	Livetime [s]
ontime3	34177.458944082	Sum of GTIs [s]
ontime5	34180.59993425	Sum of GTIs [s]
ontime6	34174.317983896	Sum of GTIs [s]
ontime7	34180.59993425	Sum of GTIs [s]
ontime8	34177.45896405	Sum of GTIs [s]
l2events	246609	Number of level 2 events



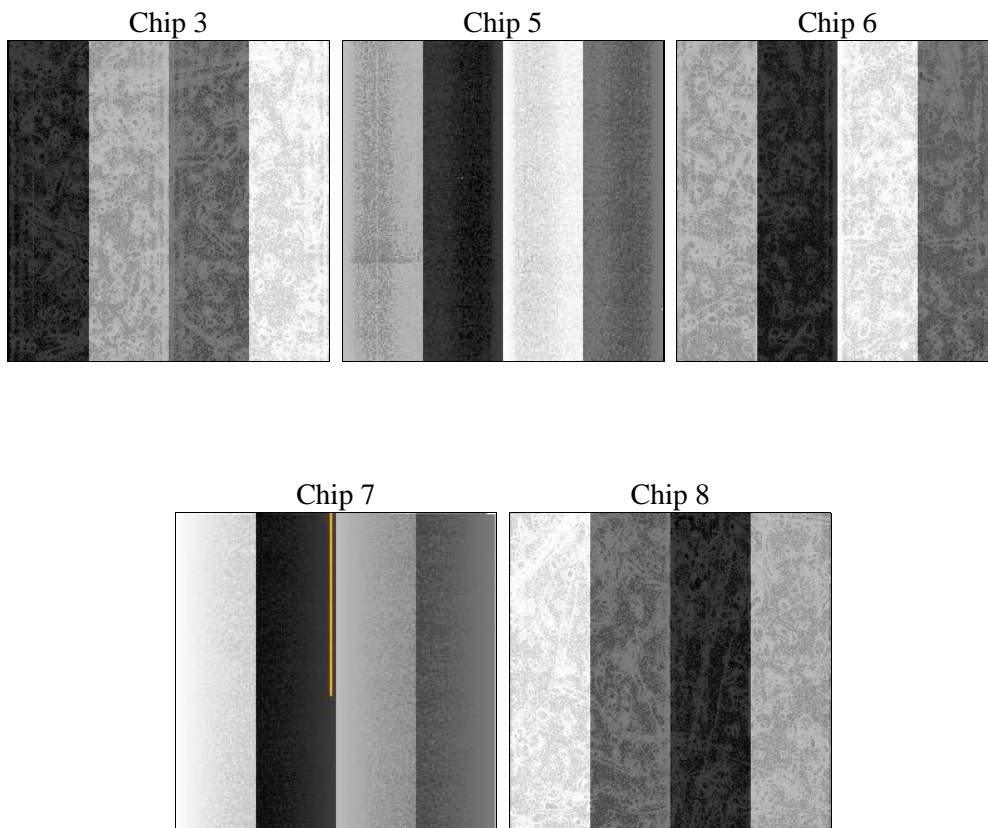
2 OBI

2.1 OBI

2.1.1 Images



2.1.2 Bias



2.1.3 Parameters

obi_num	1	Obi number	sched_exp_time	34000.000000	[s] Scheduled observation exposure time
ascdsver	8.4.5	Processing system revision	ontime	34180.59993425	Sum of GTIs [s]
caldbver	4.5.2	 	ontime3	34177.458944082	Sum of GTIs [s]
date	2012-10-17T12:10:26	Date and time of file creation	ontime5	34180.59993425	Sum of GTIs [s]
revision	3	Processing version of data	ontime6	34174.317983896	Sum of GTIs [s]
			ontime7	34180.59993425	Sum of GTIs [s]
			ontime8	34177.45896405	Sum of GTIs [s]
			l1events	1005499	Number of level 1 events

2.1.4 Events

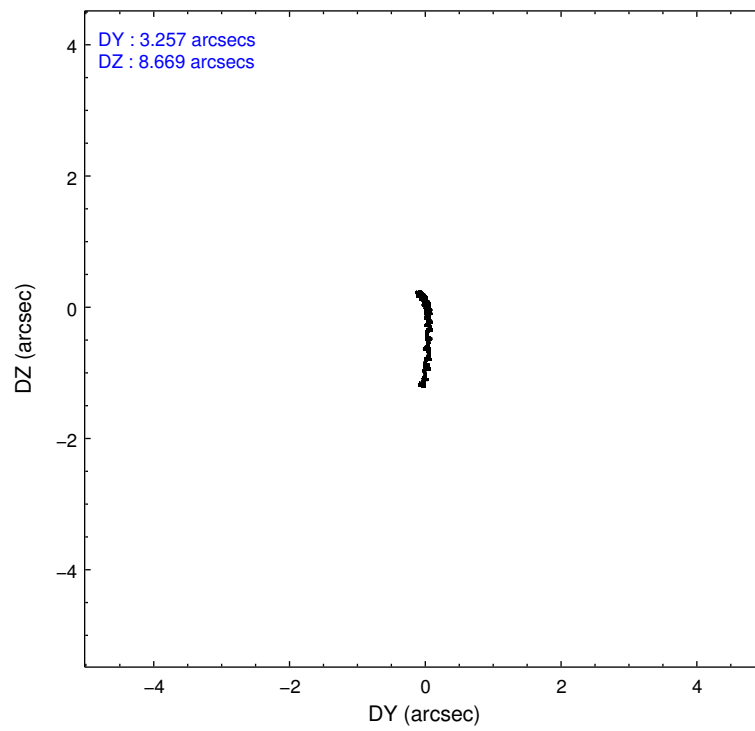
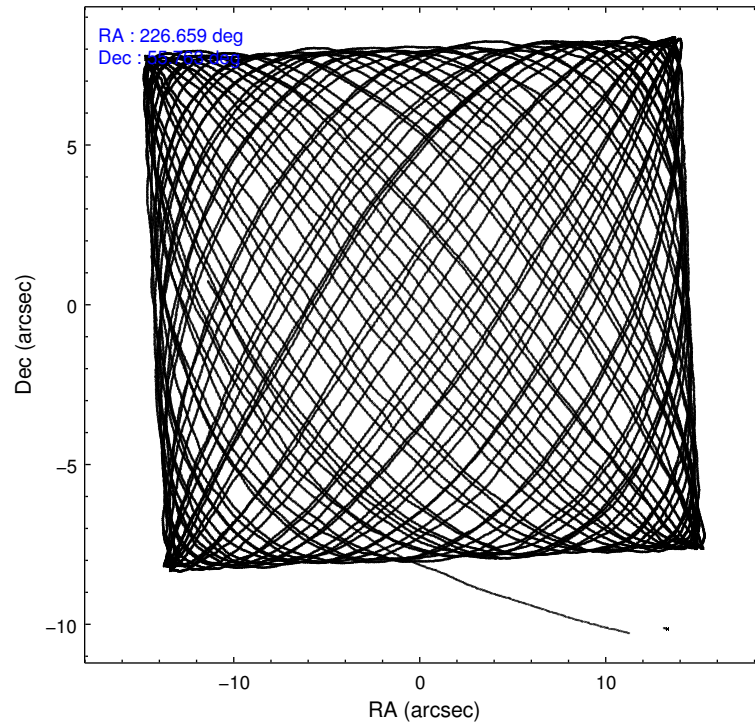
	ccd 3	ccd 5	ccd 6	ccd 7	ccd 8
level 1 events	173823	233620	179093	194751	224212
rejected events	157450	116610	160118	104192	176016
rejected %	90%	49%	89%	53%	78%

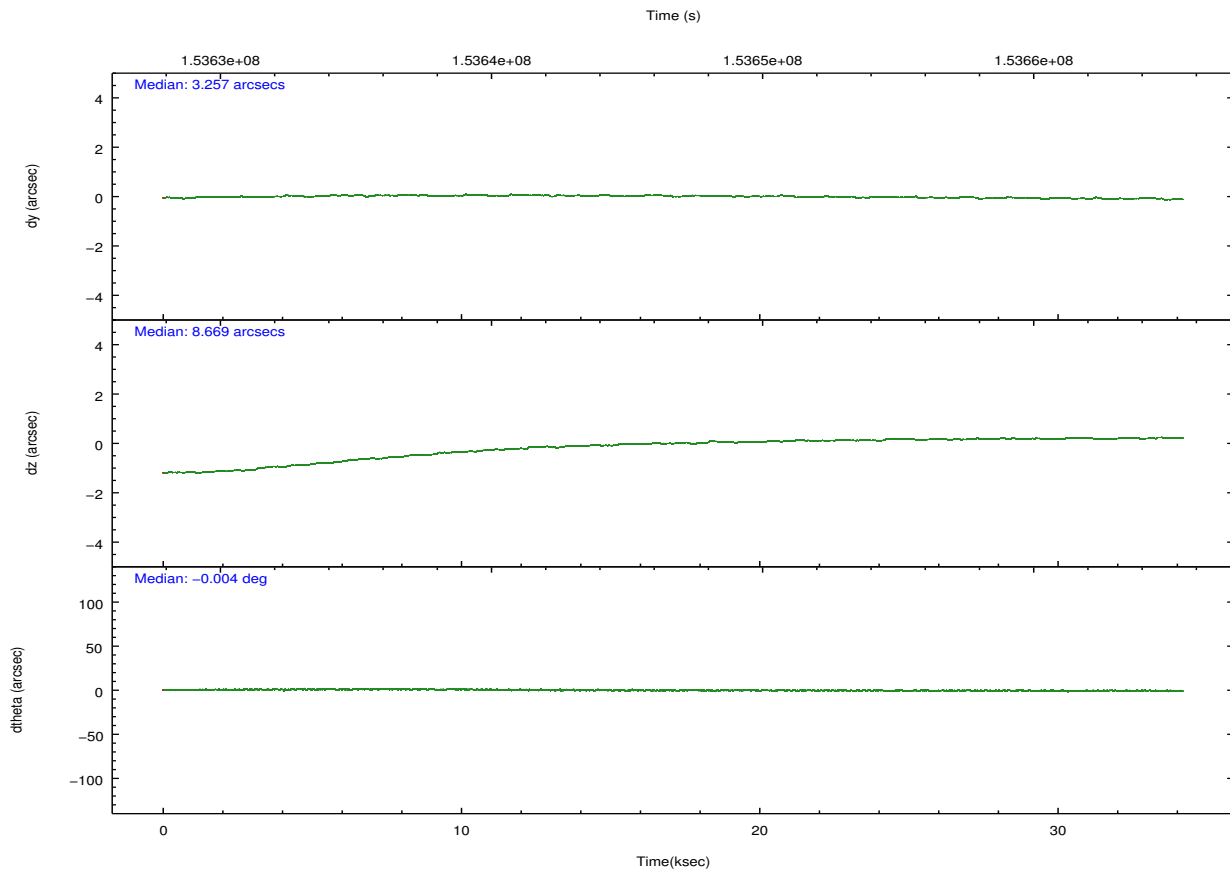
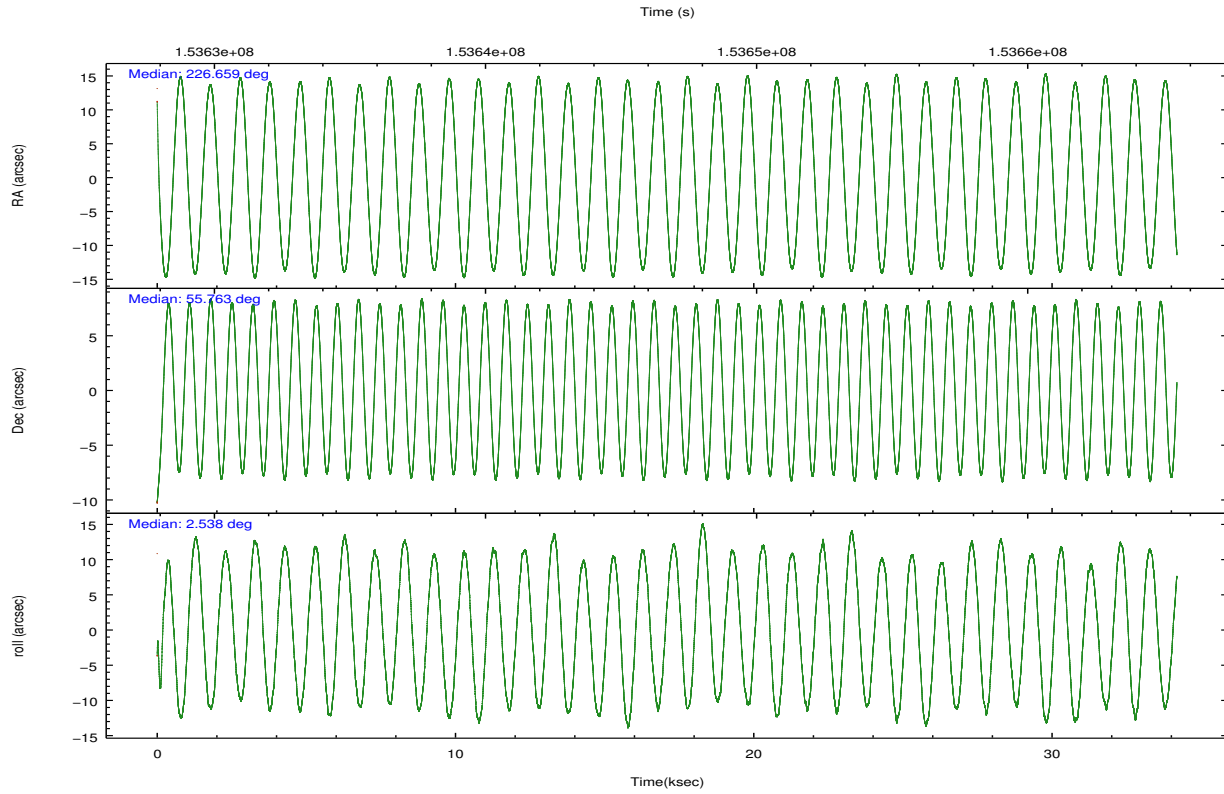
	ccd 3	ccd 5	ccd 6	ccd 7	ccd 8
grade 0 events	5951	15124	7320	9865	15251
	3%	6%	4%	5%	6%
grade 1 events	82	281	88	164	152
	0%	0%	0%	0%	0%
grade 2 events	3484	32234	3930	18098	10589
	2%	13%	2%	9%	4%
grade 3 events	2019	5860	2096	8865	5180
	1%	2%	1%	4%	2%
grade 4 events	1847	5521	1993	8741	4830
	1%	2%	1%	4%	2%
grade 5 events	6604	19335	6879	20293	9571
	3%	8%	3%	10%	4%
grade 6 events	3173	59074	3761	45603	12682
	1%	25%	2%	23%	5%
grade 7 events	150663	96191	153026	83122	165957
	86%	41%	85%	42%	74%

2.2 Compared Parameters

Parameter	Planned	Actual	Parameter	Planned	Actual
Instrument	ACIS	ACIS	Obspar format version number	7	7
Detector	ACIS-35678	ACIS-35678	Obspar file type	PREDICTED	ACTUAL
Grating	NONE	NONE	Obspar update status	NONE	UPDATED
Data mode	VFAINT	VFAINT	Number of optional ACIS chips dropped	0	0
Observation mode	POINTING	POINTING	On-chip summing requested	N	N
[deg] Pointing RA	226.618948	226.6593806719747	Subarray requested	NONE	NONE
[deg] Pointing Dec	55.747930	55.76287359943397	Alternating exposures requested	N	N
[deg] Pointing Roll	2.420408	2.543616417745687	[s] Primary exposure time	0.000000	3.1
[mm] SIM focus pos	-0.684267	-0.6828225247311905			
[mm] SIM defocus	0	0.001444936568705701			
[mm] SIM translation stage pos	-190.132523	-190.1425803651734			
[mm] SIM translation stage offset	0	0.01005778216563158			
[s] Observation start time (MET)	153629786.184000	153628658.95723			
Observation start date	2002-11-14T02:55:22	2002-11-14T02:37:38			
[s] Observation end time (MET)	153663786.184000	153664803.53373			
Observation end date	2002-11-14T12:22:02	2002-11-14T12:40:03			
Read mode	TIMED	TIMED			

2.3 Aspect





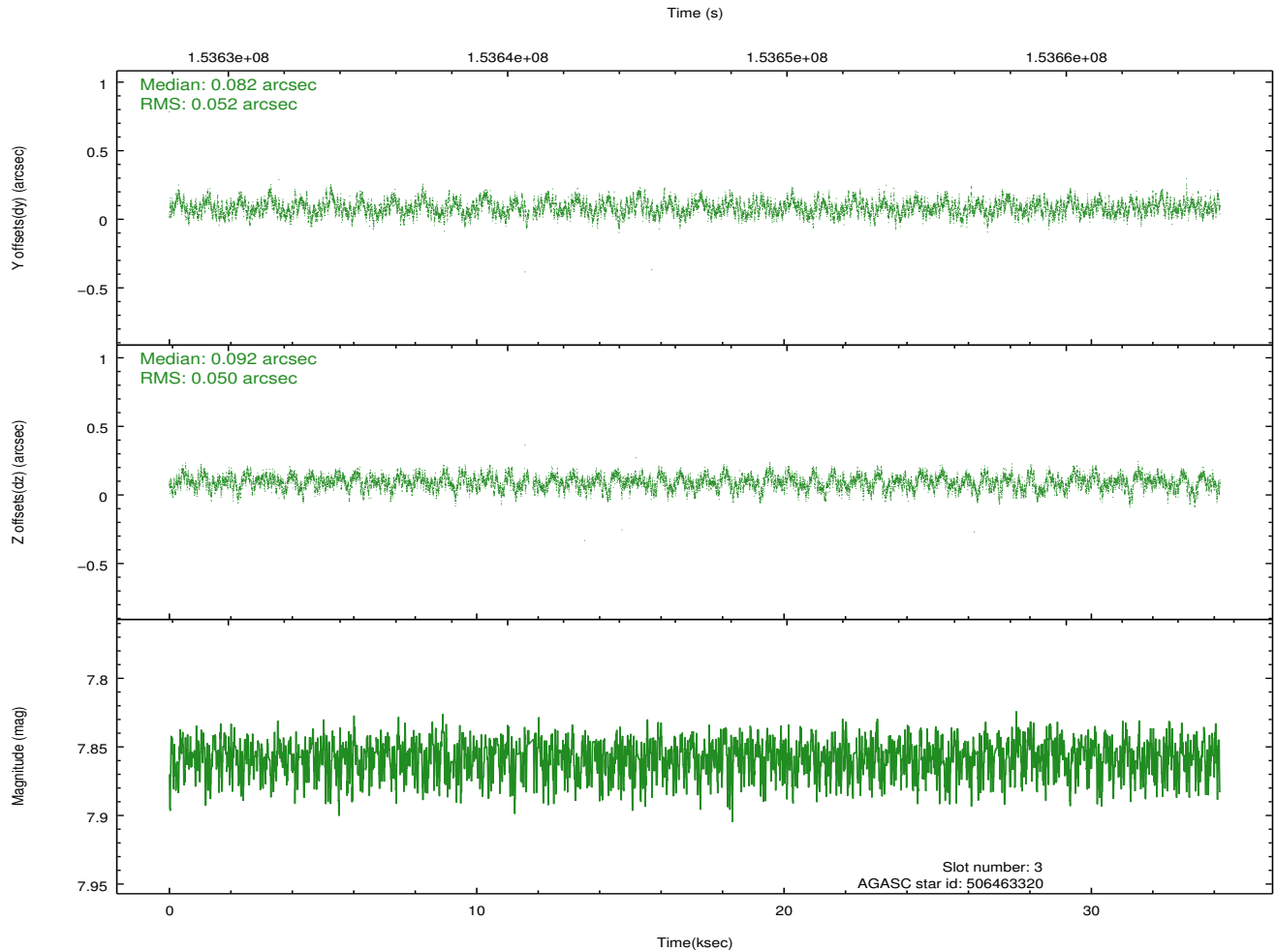
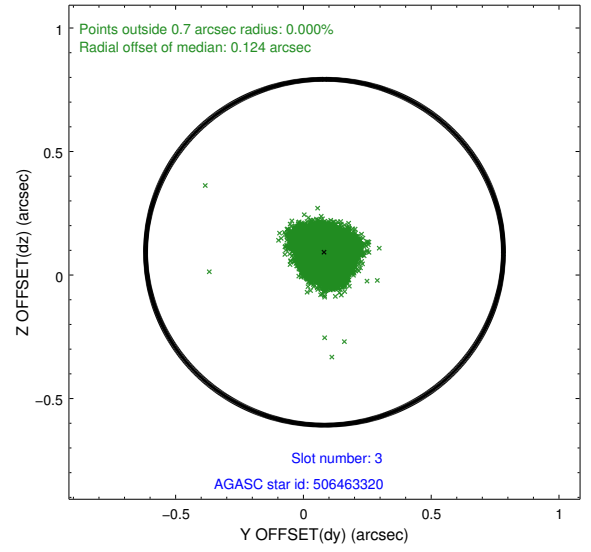
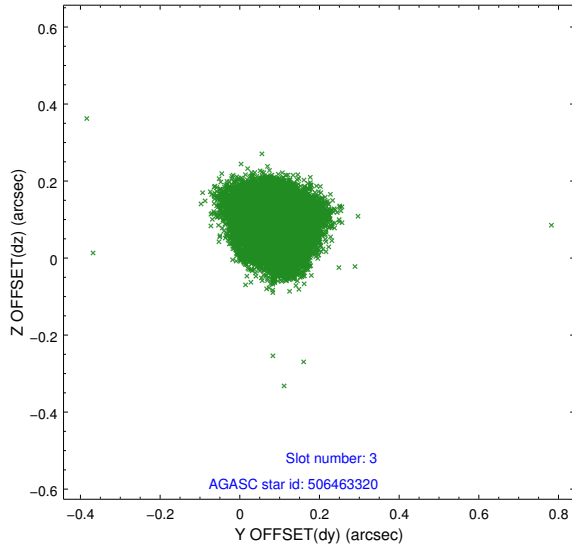
Slot Statistics

slot	status	id	mag	n_pts	med_dy	med_dz	dr1	dr2	ra	dec	mean_y	mean_z
0	FID	ACIS-S-2	7.11	8338	-0.017	-0.012	0.009	0.016	0.000000	0.000000	-755.92	-1729.63
1	FID	ACIS-S-4	7.20	8337	0.015	0.011	0.007	0.014	0.000000	0.000000	2157.37	178.82
2	FID	ACIS-S-5	7.24	8338	-0.030	0.010	0.008	0.013	0.000000	0.000000	-1808.71	172.55
3	GUIDE	506463320	7.86	16615	0.082	0.092	0.079	0.121	226.349027	55.677313	-556.96	-229.61
4	GUIDE	506463912	9.59	16667	0.114	-0.182	0.136	0.216	225.721331	56.369086	-1692.22	2321.31
5	GUIDE	507380816	8.99	16671	-0.031	0.076	0.077	0.123	226.866183	55.265818	434.47	-1754.14
6	GUIDE	507381088	9.47	16662	-0.046	-0.116	0.087	0.140	227.169262	55.814749	1123.54	197.67
7	GUIDE	507382224	8.48	16674	-0.124	0.132	0.065	0.105	227.706518	55.422449	2172.29	-1246.70

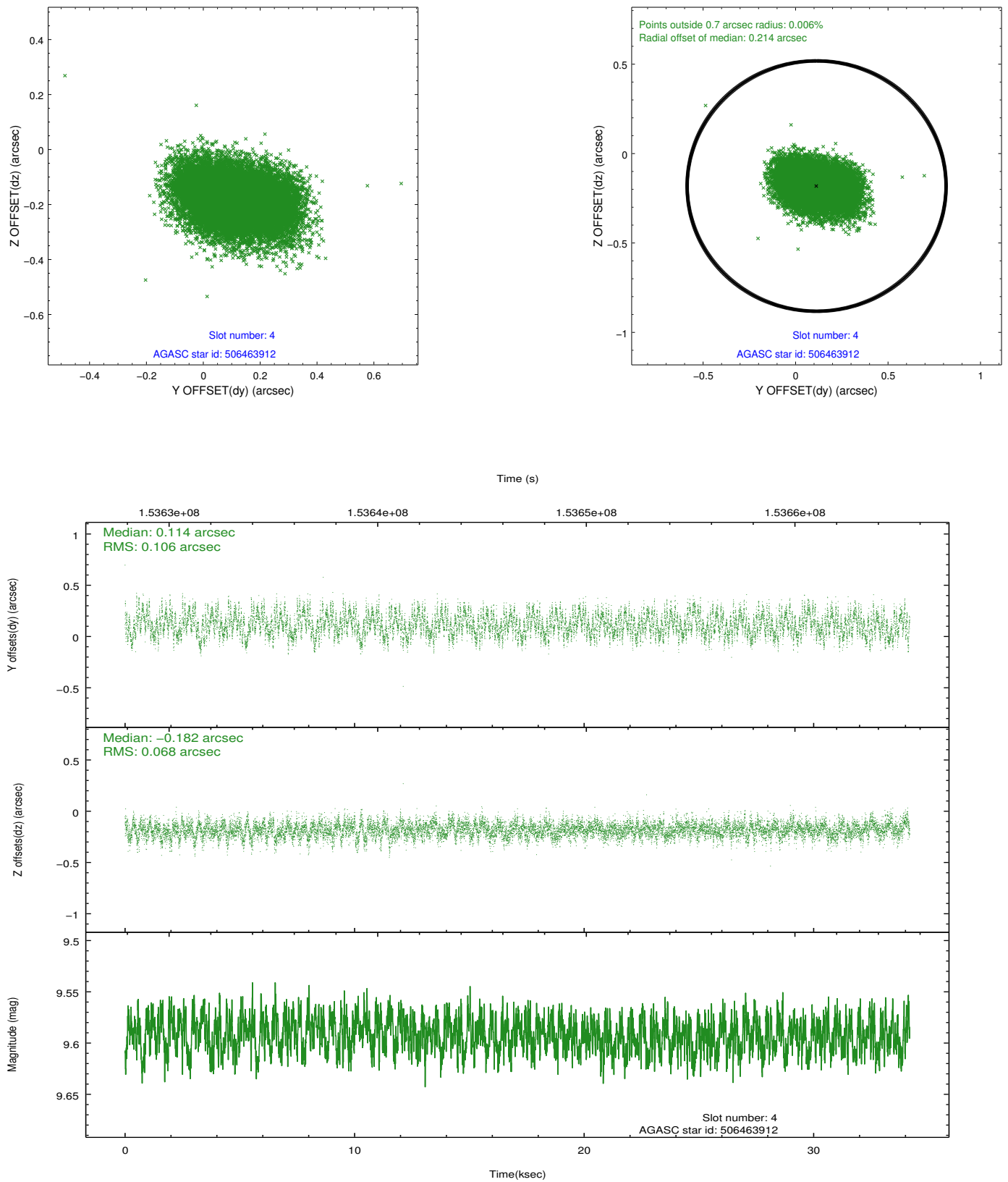
∞

2.4 Star Slots

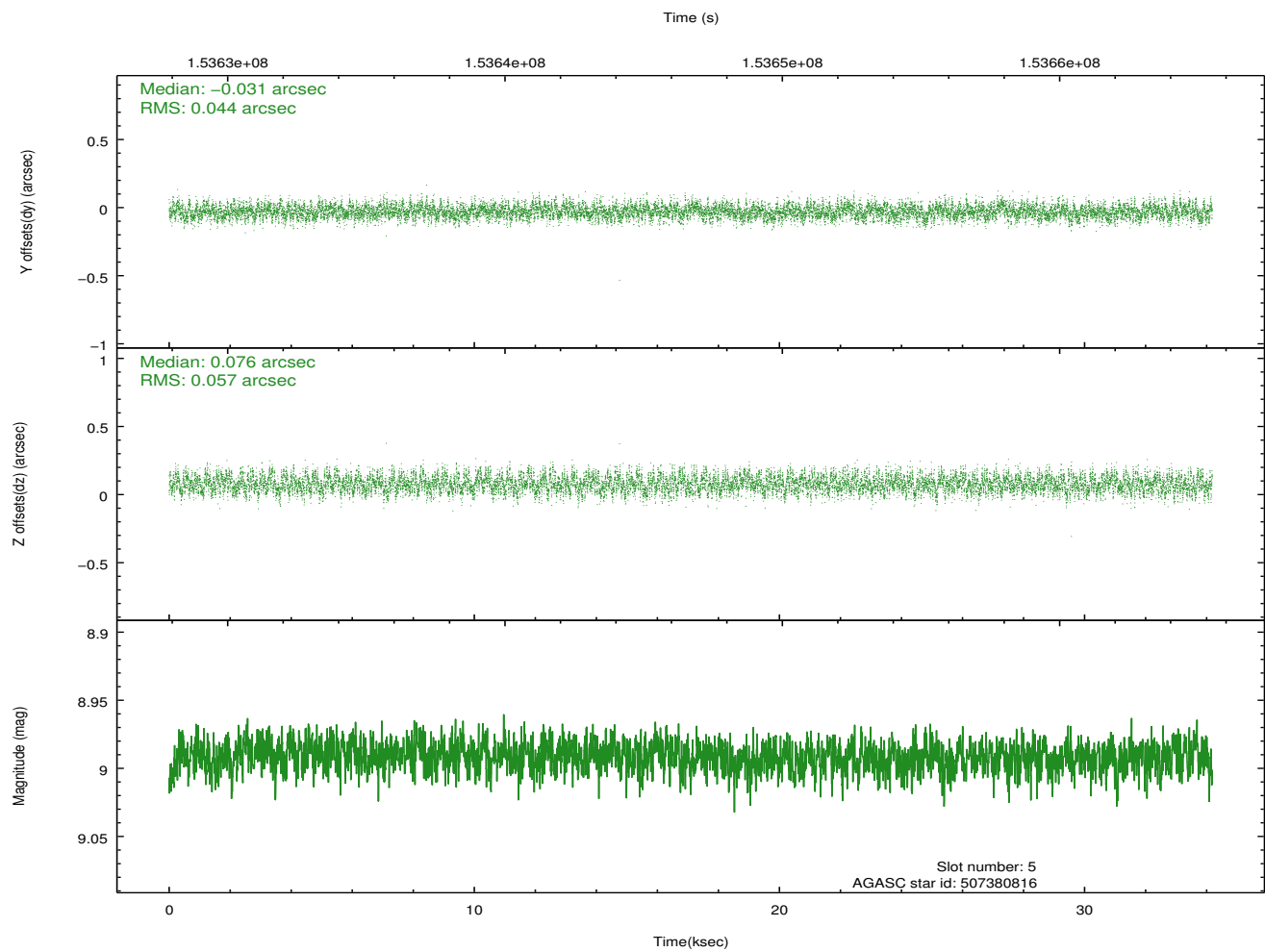
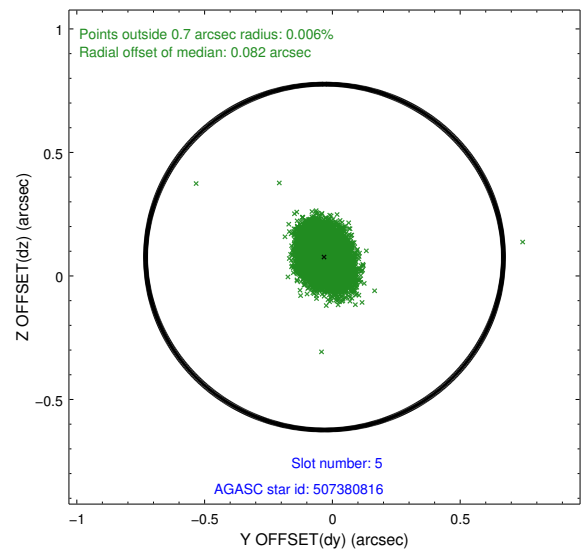
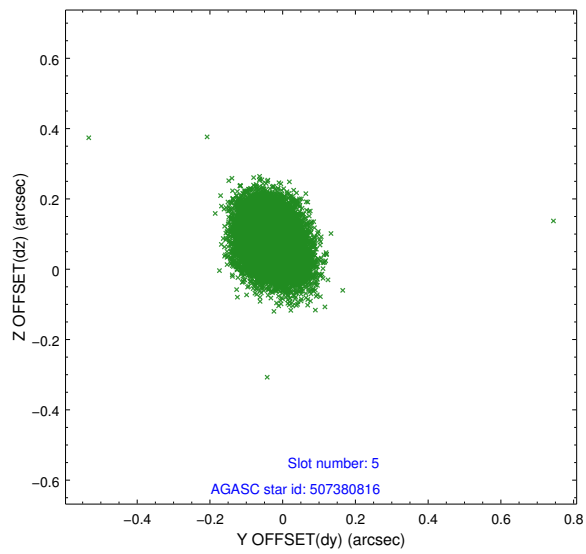
2.4.1 Slot 3



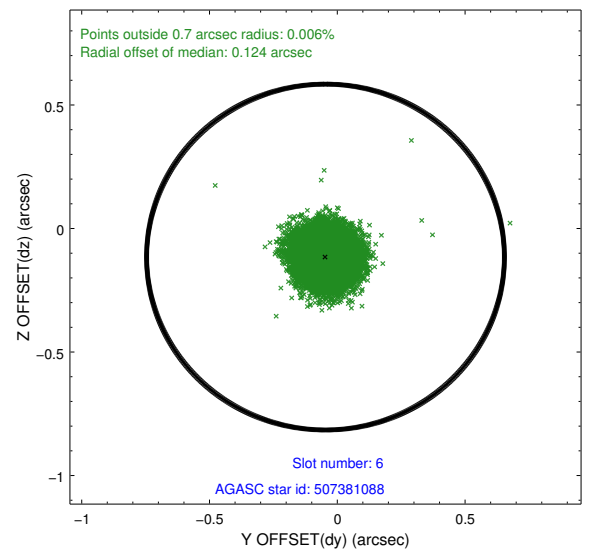
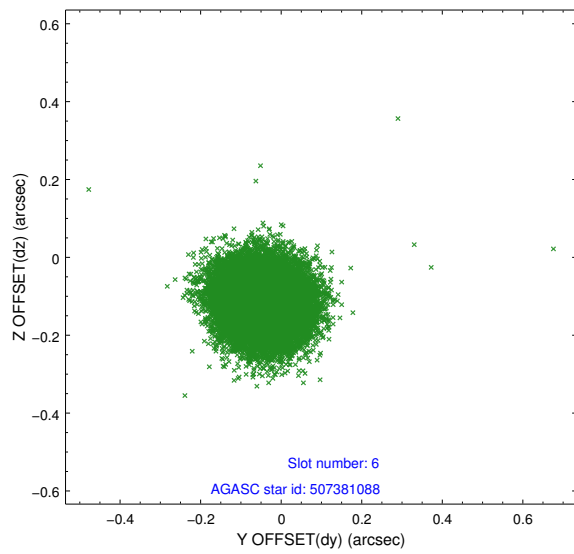
2.4.2 Slot 4



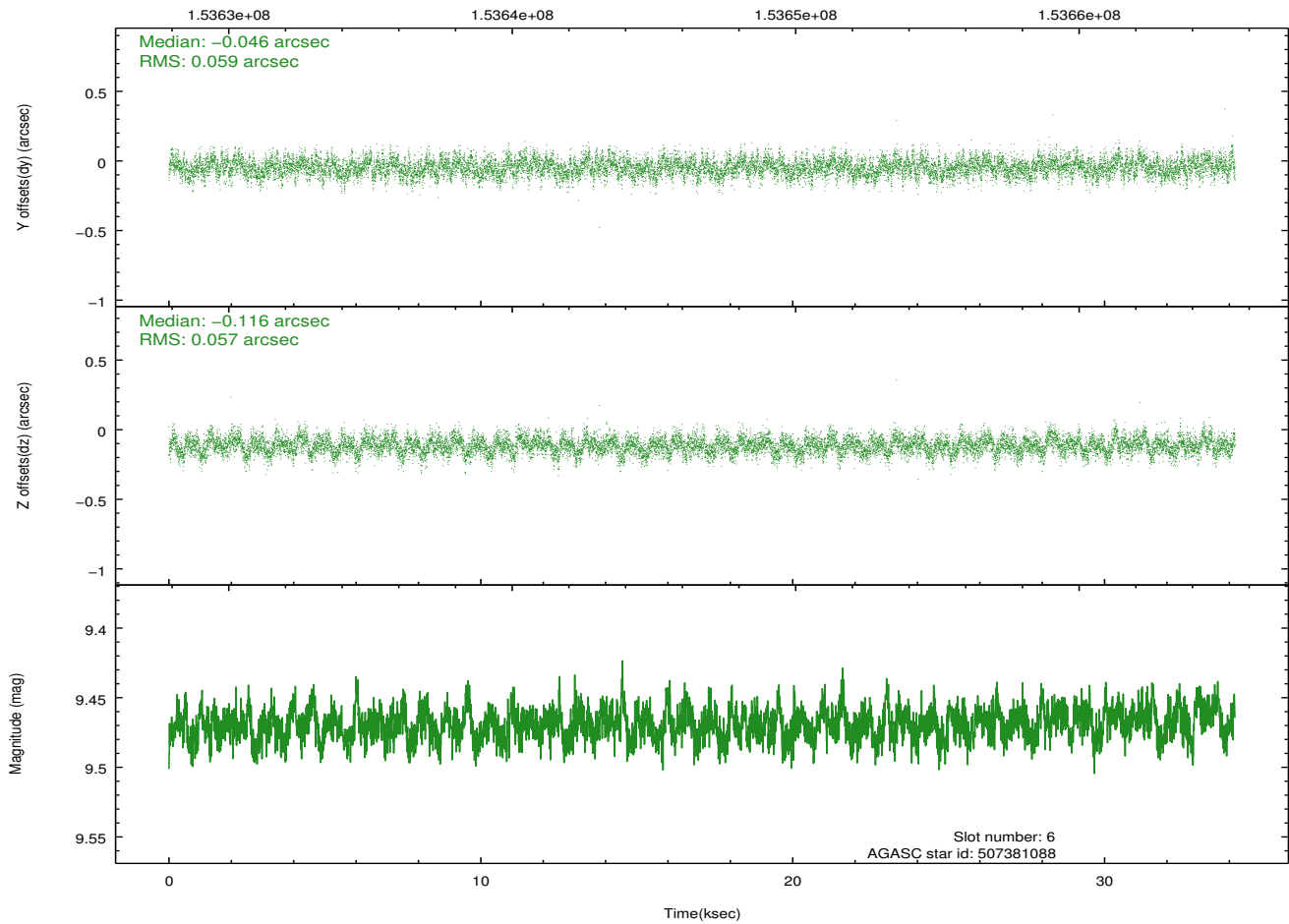
2.4.3 Slot 5



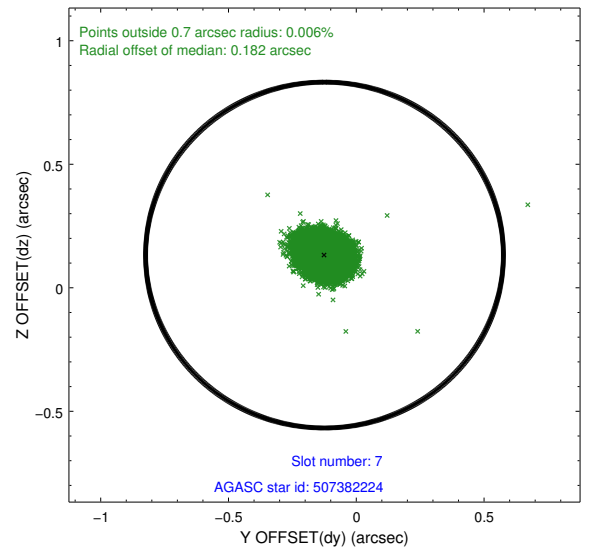
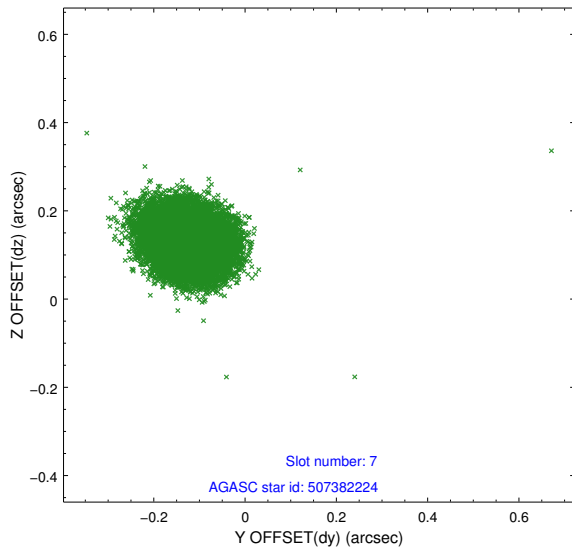
2.4.4 Slot 6



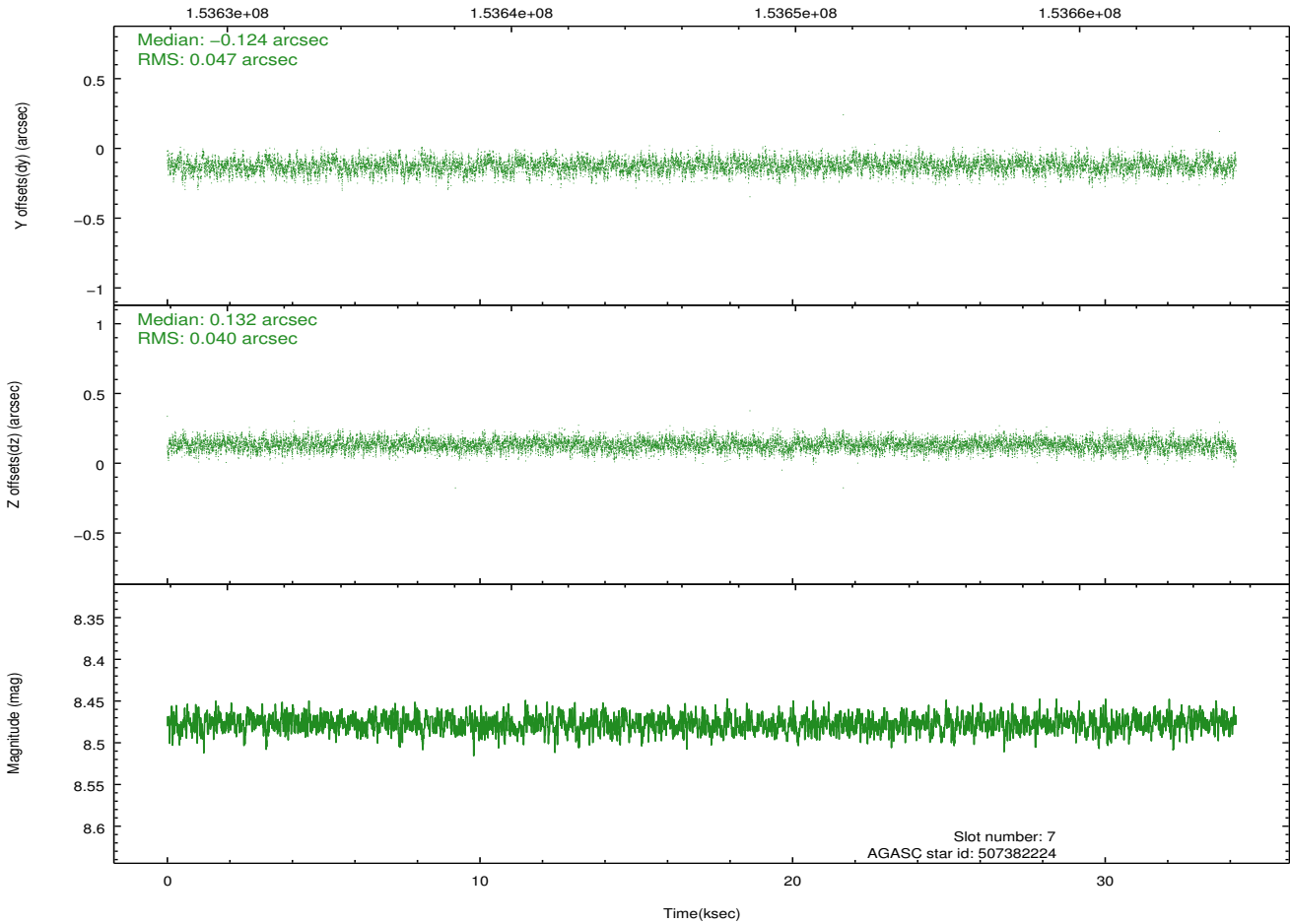
Time (s)



2.4.5 Slot 7

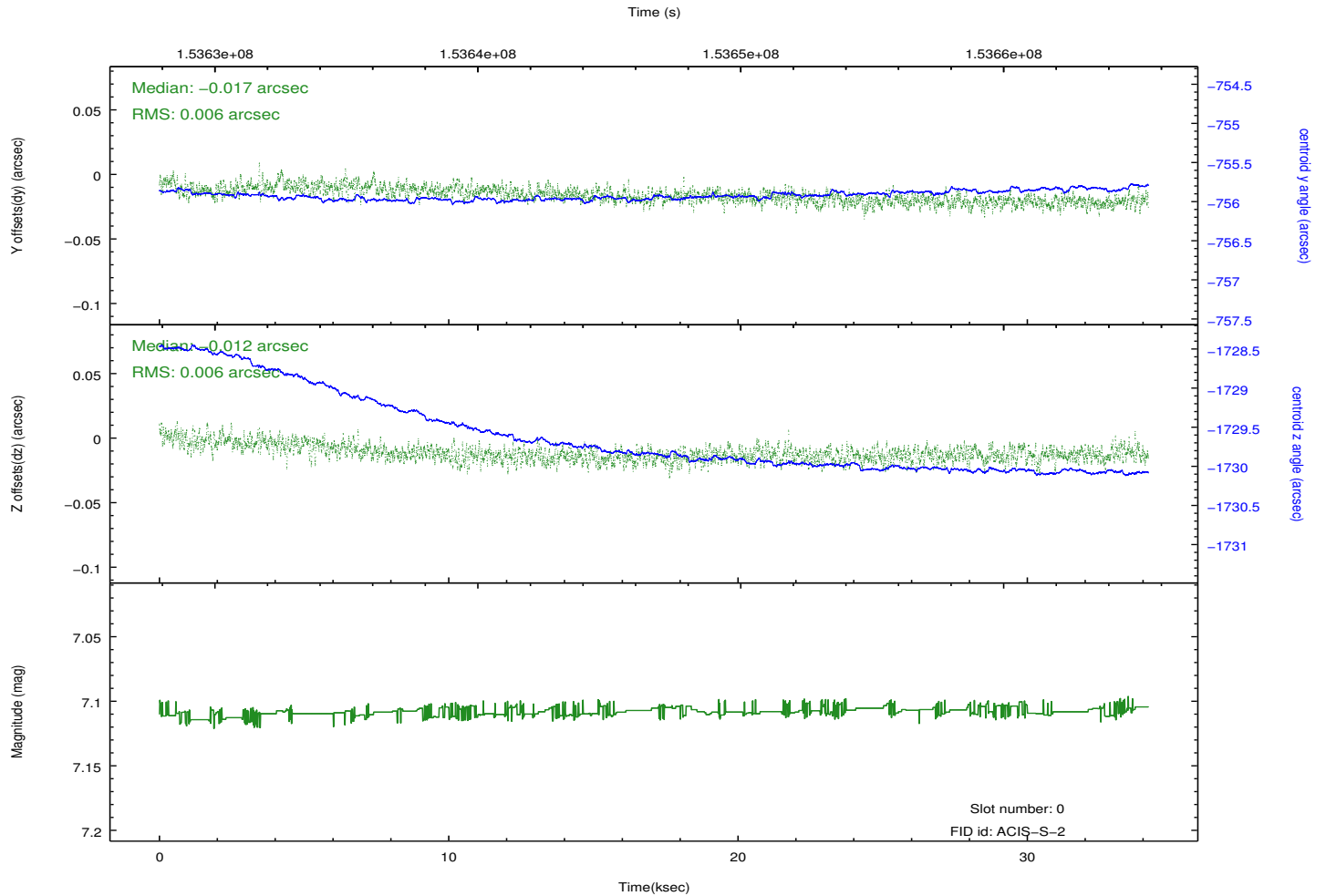
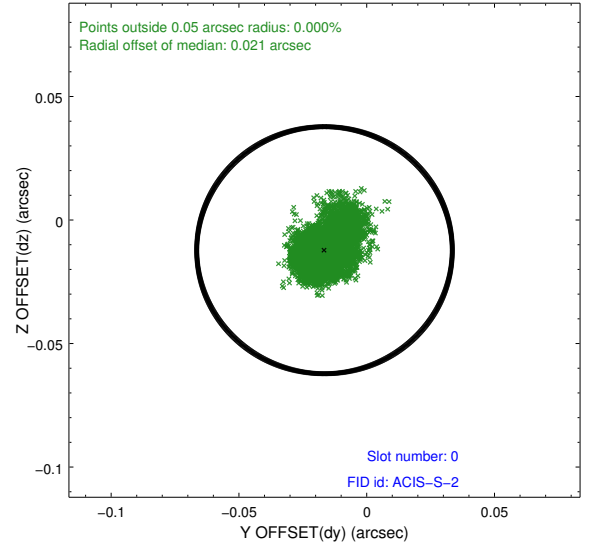
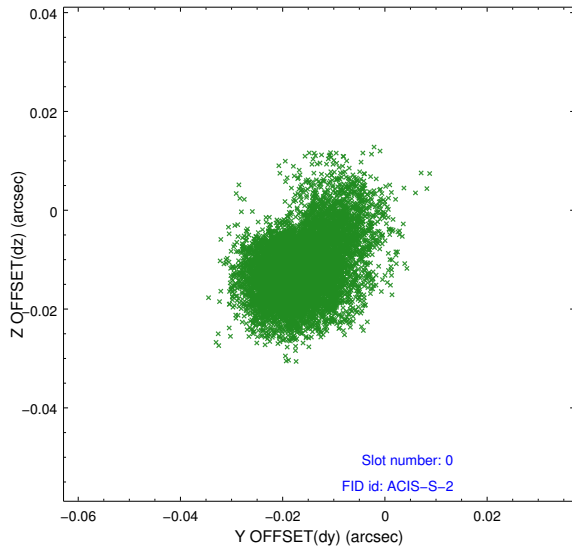


Time (s)

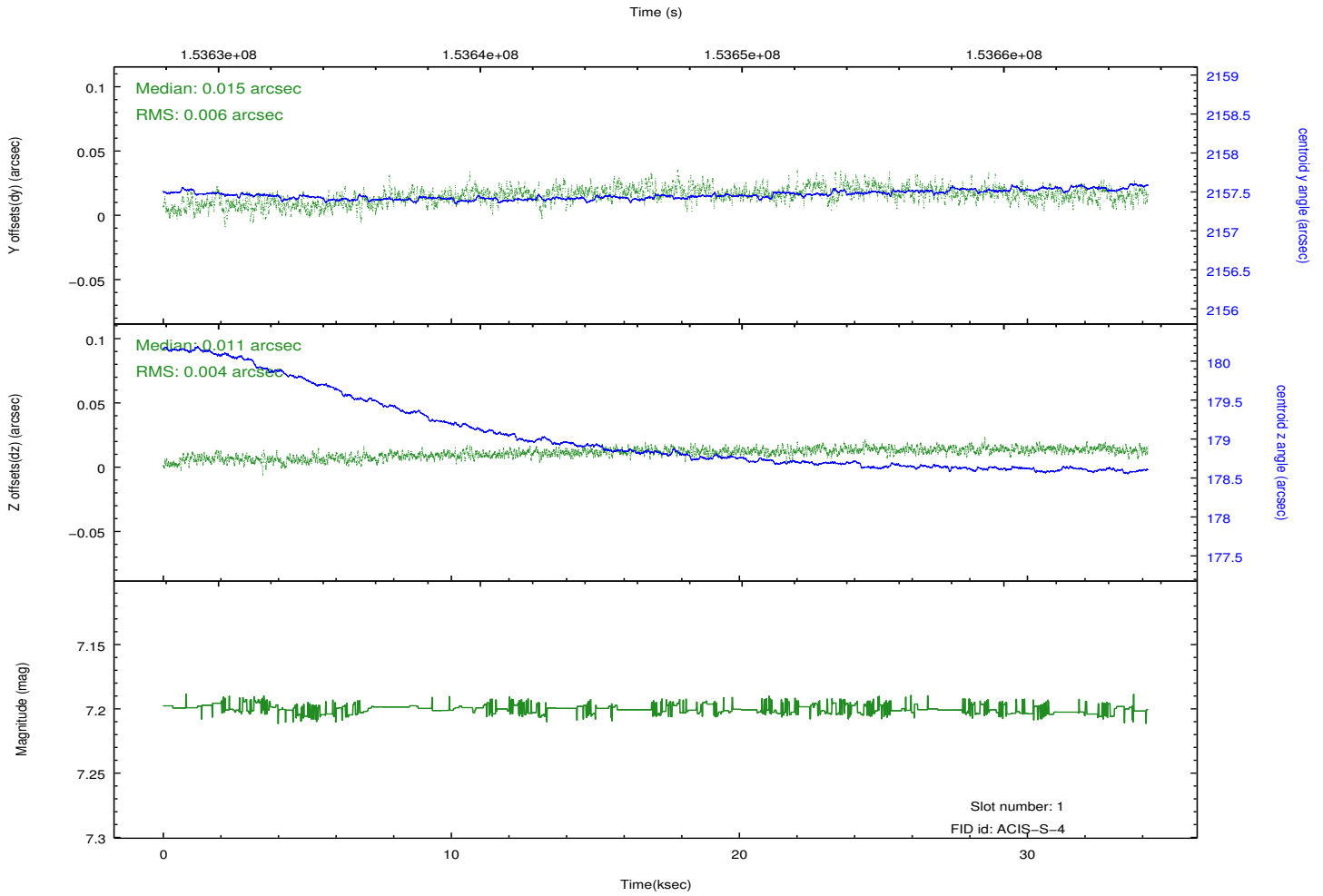
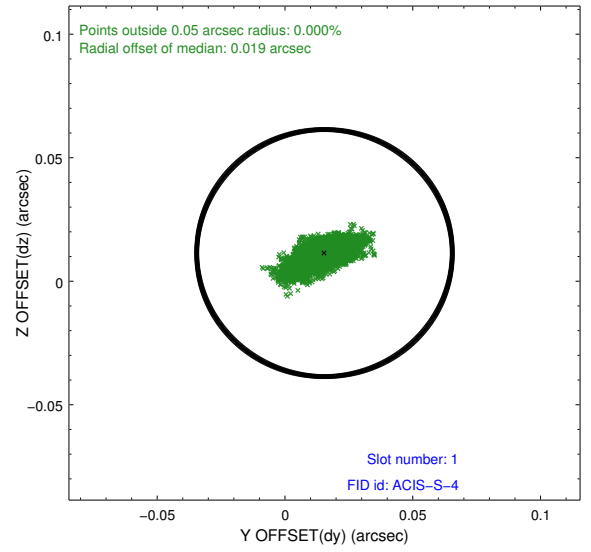
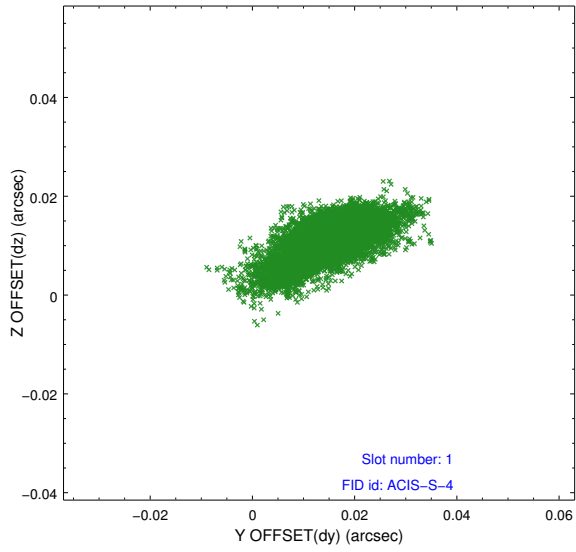


2.5 FID Slots

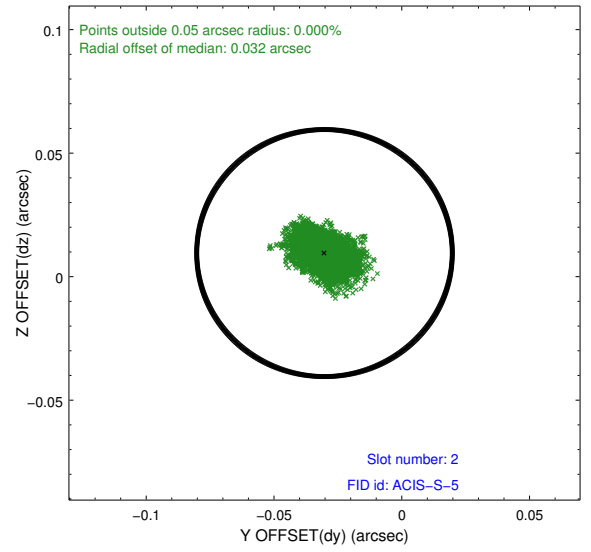
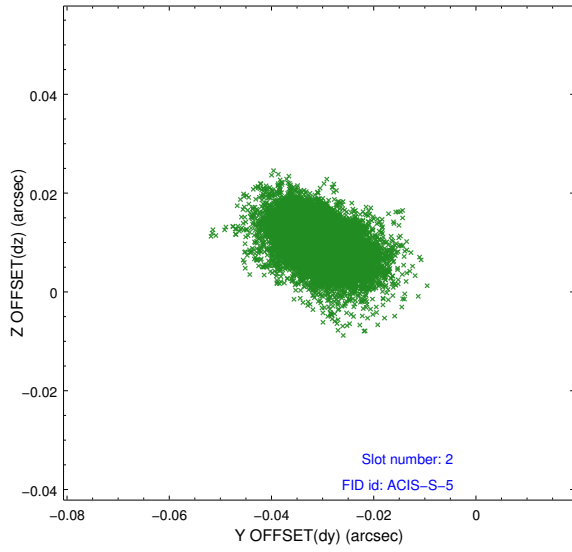
2.5.1 Slot 0



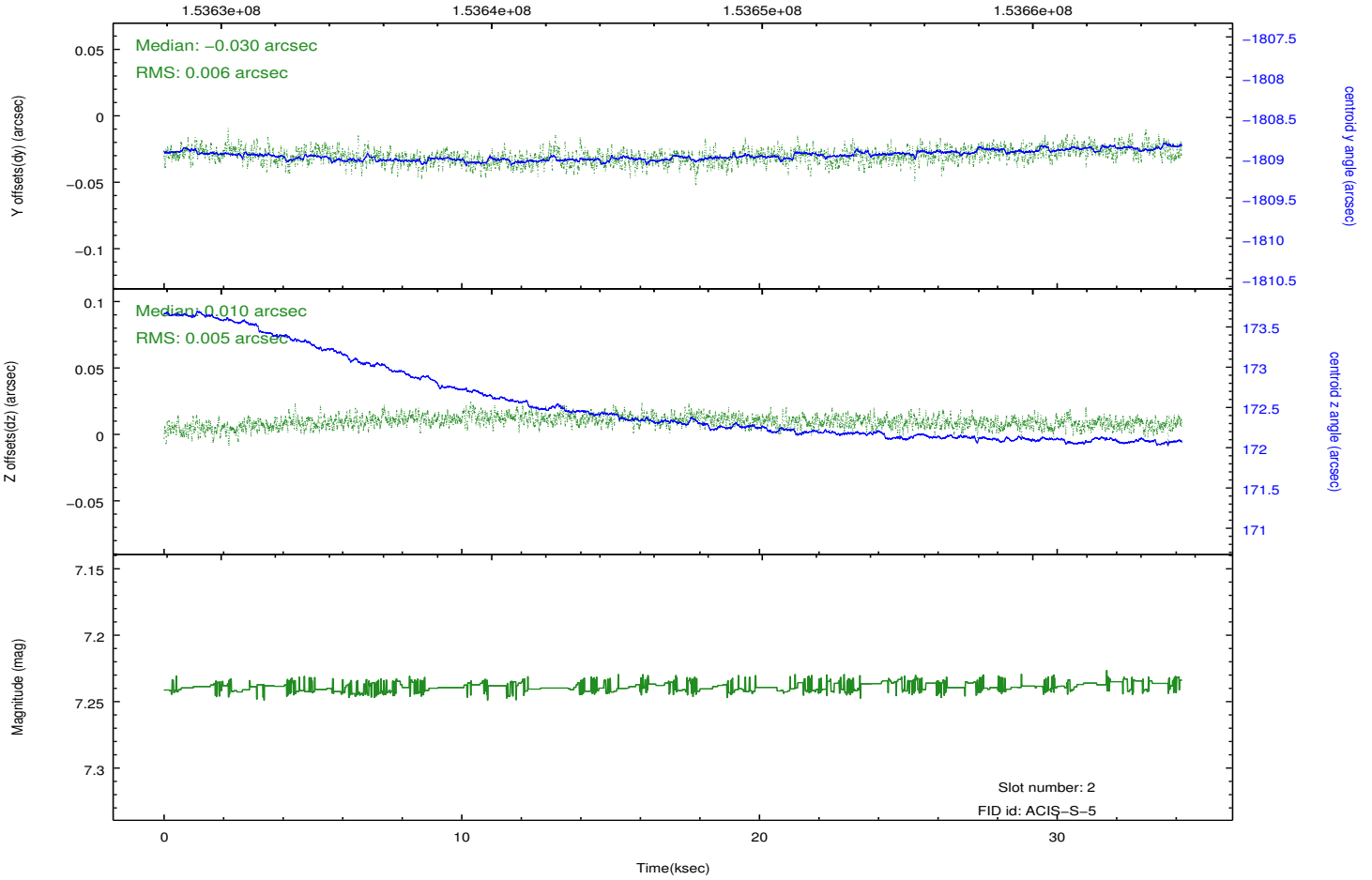
2.5.2 Slot 1



2.5.3 Slot 2



Time (s)



A Summary

A.1 Status

V&V Scientist	Jen Lauer
V&V Date (YYYY-MM-DD)	2012.10.26
V&V Edition	1
V&V Disposition and Status	OK
V&V Charge Time	34.18

A.2 Comments