

V&V Reference Report

L2 ASCDS Version : 8.4.5

Observation 2919 - L2 Version 3
Chandra X-Ray Center

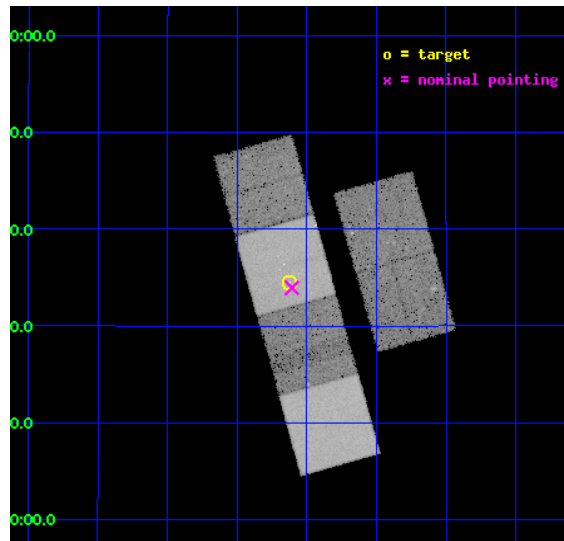
L2 Processing Date : Oct 10 2012

Contents

1	Front	2
2	OBI	3
2.1	OBI	3
2.1.1	Images	3
2.1.2	Bias	3
2.1.3	Parameters	4
2.1.4	Events	4
2.2	Compared Parameters	5
2.3	Aspect	6
2.4	Star Slots	9
2.4.1	Slot 3	9
2.4.2	Slot 4	10
2.4.3	Slot 5	11
2.4.4	Slot 6	12
2.4.5	Slot 7	13
2.5	FID Slots	14
2.5.1	Slot 0	14
2.5.2	Slot 1	15
2.5.3	Slot 2	16
A	Summary	17
A.1	Status	17
A.2	Comments	17

1 Front

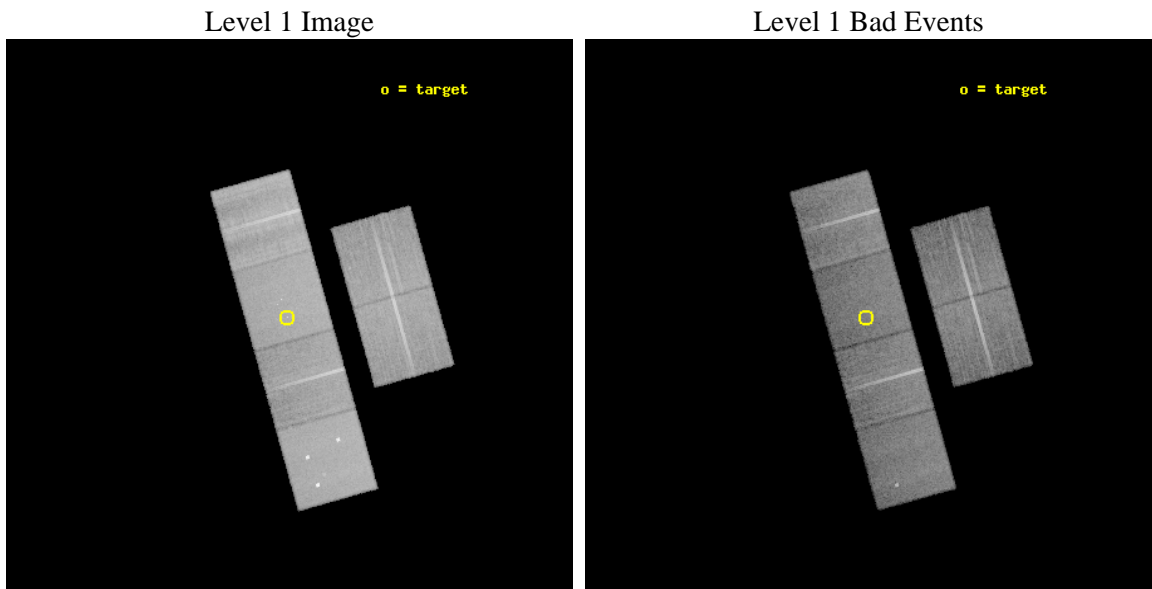
seq_num	600256	Sequence number
obs_id	2919	Observation id
title	FURTHER PROBING THE NATURE OF SUPER-LUMINOUS X-RAY SOURCES IN NEARBY GALAXIES	Proposal title
observer	Dr Timothy Roberts	Principal investigator
object	NGC 3628 X-2	Source name
dtcycle	0	
cycle	P	events from which exps? Prim/Second/Both
ra_targ	170.15625	Observer's specified target RA [deg]
dec_targ	13.574444	Observer's specified target Dec [deg]
ra_nom	170.15192139153	Nominal RA [deg]
dec_nom	13.565713728901	Nominal Dec [deg]
roll_nom	254.32245401388	Nominal Roll [deg]
revision	3	Processing version of data
ontime	22763.441130161	Sum of GTIs [s]
livetime	22475.196732073	Livetime [s]
ontime2	22763.482170165	Sum of GTIs [s]
ontime3	22760.077069789	Sum of GTIs [s]
ontime5	22763.400090158	Sum of GTIs [s]
ontime6	22763.359050155	Sum of GTIs [s]
ontime7	22763.441130161	Sum of GTIs [s]
ontime8	22763.276970178	Sum of GTIs [s]
l2events	252075	Number of level 2 events



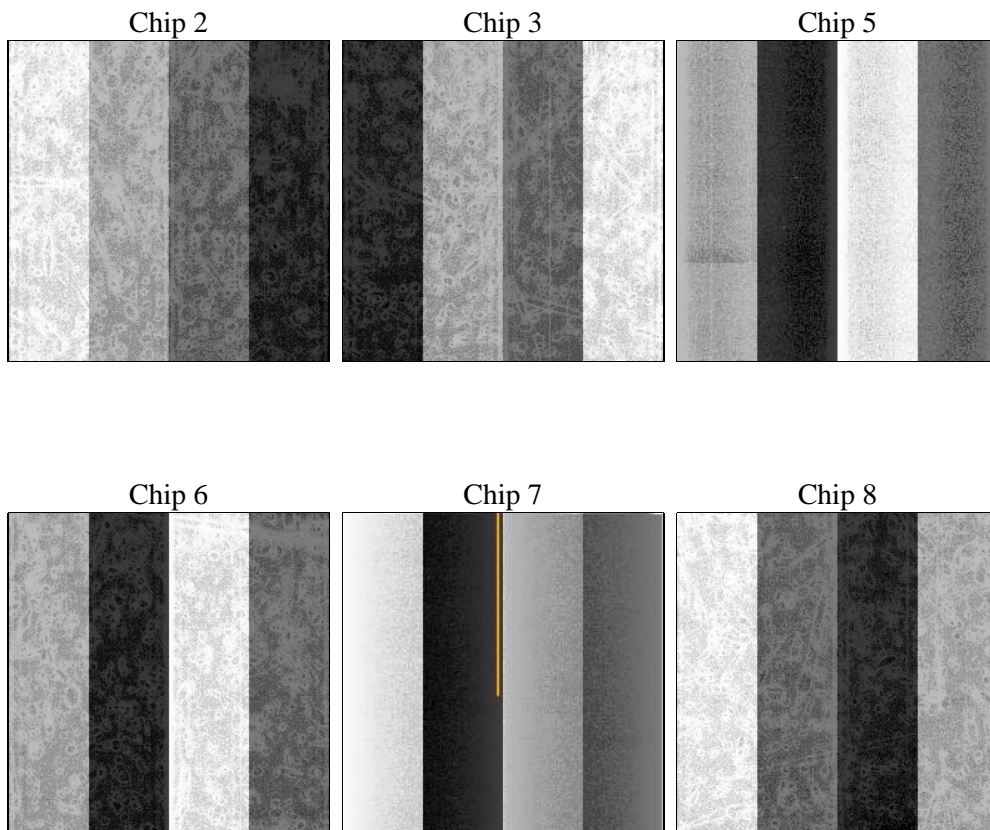
2 OBI

2.1 OBI

2.1.1 Images



2.1.2 Bias



2.1.3 Parameters

obi_num	0	Obi number	sched_exp_time	22800.000000	[s] Scheduled observation exposure time
ascdsver	8.4.5	Processing system revision	ontime	22763.441130161	Sum of GTIs [s]
caldbver	4.5.2	 	ontime2	22763.482170165	Sum of GTIs [s]
date	2012-10-10T04:26:14	Date and time of file creation	ontime3	22760.077069789	Sum of GTIs [s]
revision	3	Processing version of data	ontime5	22763.400090158	Sum of GTIs [s]
			ontime6	22763.359050155	Sum of GTIs [s]
			ontime7	22763.441130161	Sum of GTIs [s]
			ontime8	22763.276970178	Sum of GTIs [s]
			l1events	1149392	Number of level 1 events

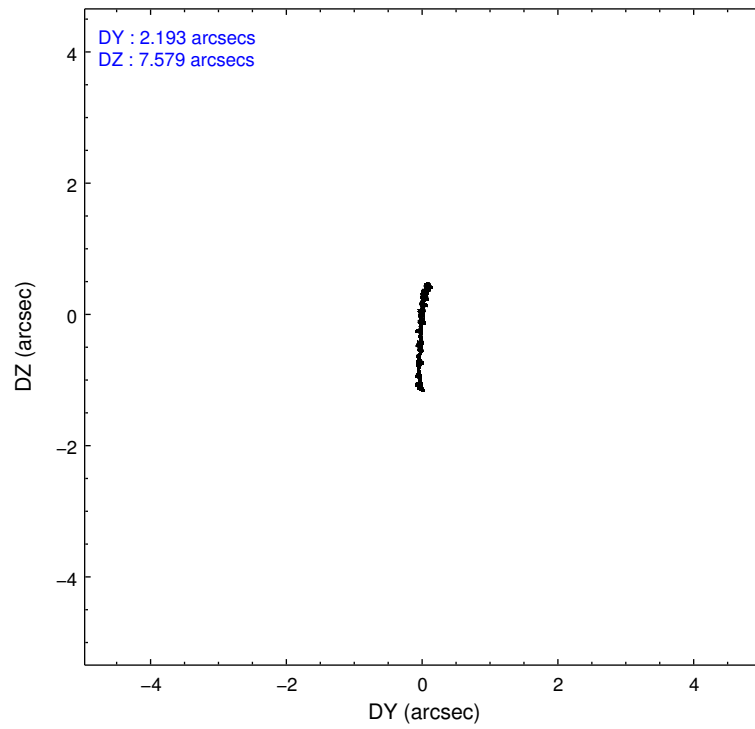
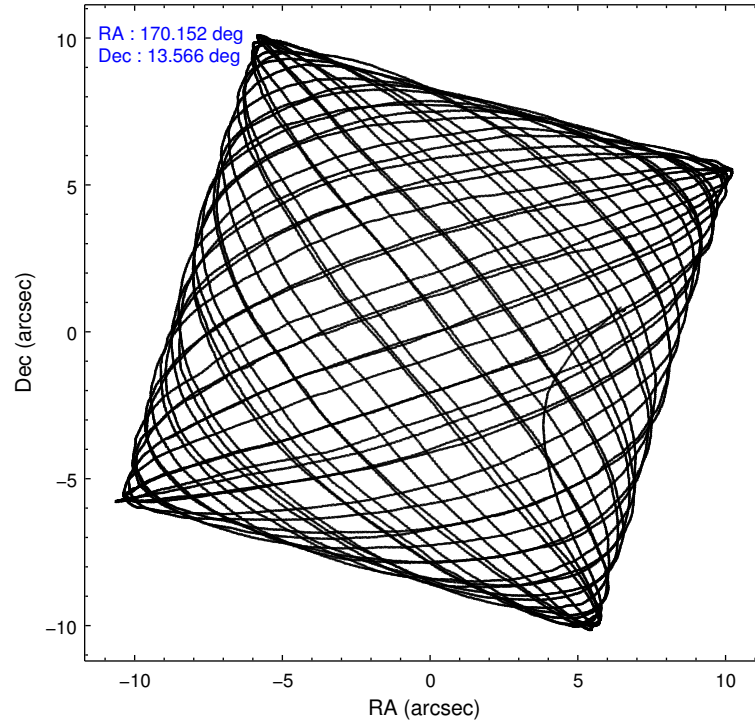
2.1.4 Events

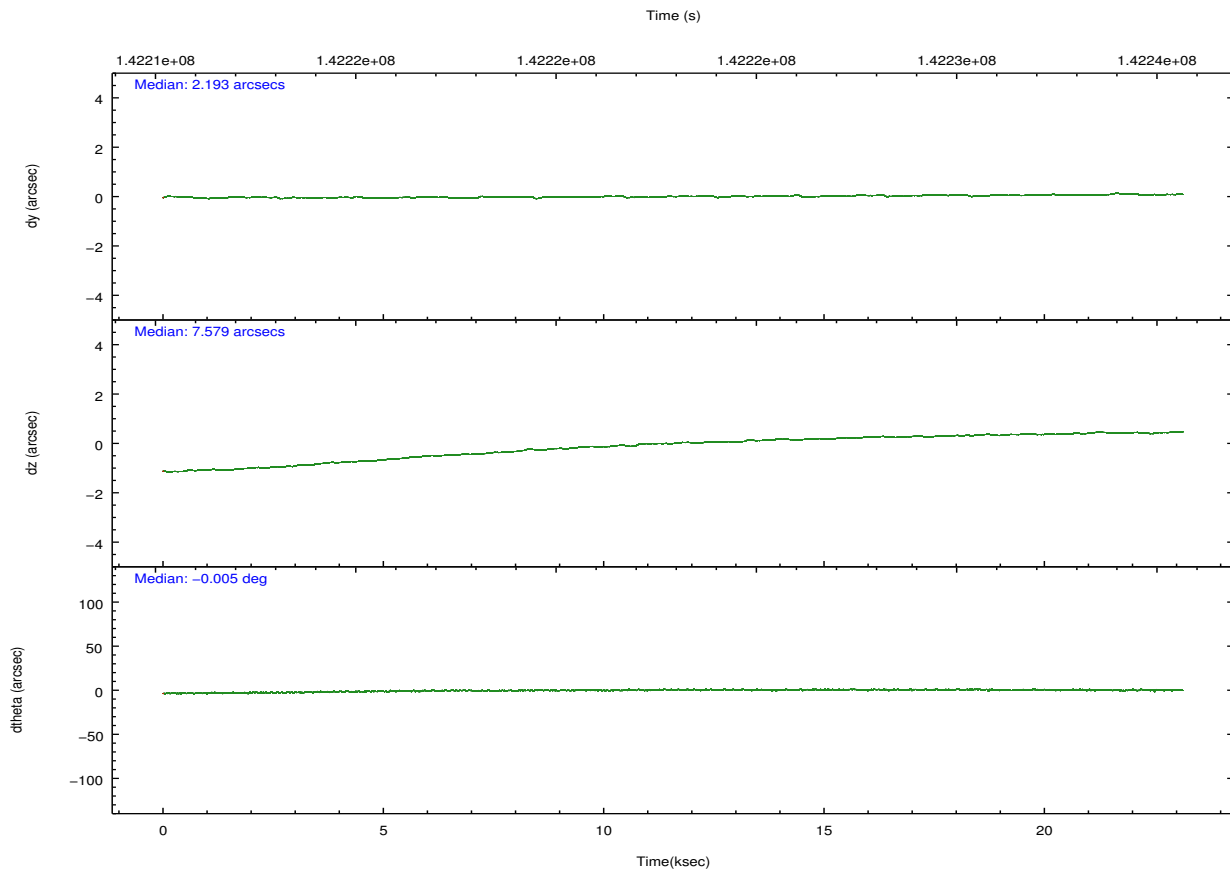
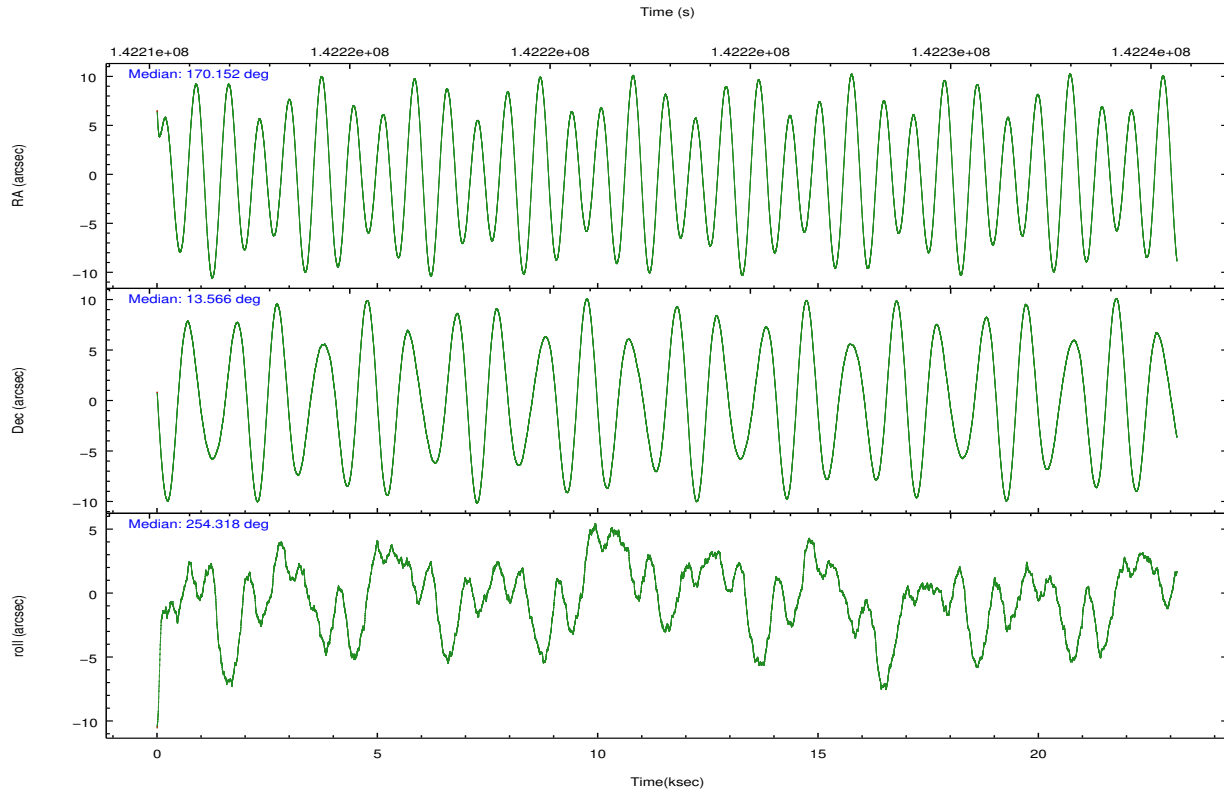
	ccd 2	ccd 3	ccd 5	ccd 6	ccd 7	ccd 8		ccd 2	ccd 3	ccd 5	ccd 6	ccd 7	ccd 8
level 1 events	165745	158672	230429	161650	203589	229307	grade 0 events	9089	8118	16916	8149	8458	24788
rejected events	144662	138634	122408	141195	117365	157184		5%	5%	7%	5%	4%	10%
rejected %	87%	87%	53%	87%	57%	68%	grade 1 events	99	64	1080	78	205	214
								0%	0%	0%	0%	0%	0%
							grade 2 events	4887	4577	29888	4605	17266	11594
								2%	2%	12%	2%	8%	5%
							grade 3 events	1620	1642	4440	1754	7660	11322
								0%	1%	1%	1%	3%	4%
							grade 4 events	1725	1773	4378	1762	7858	10270
								1%	1%	1%	1%	3%	4%
							grade 5 events	5524	6179	16622	6634	19634	8832
								3%	3%	7%	4%	9%	3%
							grade 6 events	3765	3930	52416	4188	44997	14158
								2%	2%	22%	2%	22%	6%
							grade 7 events	139036	132389	104689	134480	97511	148129
								83%	83%	45%	83%	47%	64%

2.2 Compared Parameters

Parameter	Planned	Actual	Parameter	Planned	Actual
Instrument	ACIS	ACIS	Obspar format version number	7	7
Detector	ACIS-235678	ACIS-235678	Obspar file type	PREDICTED	ACTUAL
Grating	NONE	NONE	Obspar update status	NONE	UPDATED
Data mode	FAINT	FAINT	Number of optional ACIS chips dropped	0	0
Observation mode	POINTING	POINTING	On-chip summing requested	N	N
[deg] Pointing RA	170.144627	170.1519213915291	Subarray requested	NONE	NONE
[deg] Pointing Dec	13.592021	13.56571372890079	Alternating exposures requested	N	N
[deg] Pointing Roll	254.167542	254.3224540138772	[s] Primary exposure time	0.000000	3.2
[mm] SIM focus pos	-0.684267	-0.6828225247311905			
[mm] SIM defocus	0	0.001444936568705701			
[mm] SIM translation stage pos	-190.132523	-190.1425803651734			
[mm] SIM translation stage offset	0	0.01005778216563158			
[s] Observation start time (MET)	142211689.184000	142210659.19799			
Observation start date	2002-07-04T23:13:45	2002-07-04T22:57:39			
[s] Observation end time (MET)	142234489.184000	142236120.71153			
Observation end date	2002-07-05T05:33:45	2002-07-05T06:02:00			
Read mode	TIMED	TIMED			

2.3 Aspect



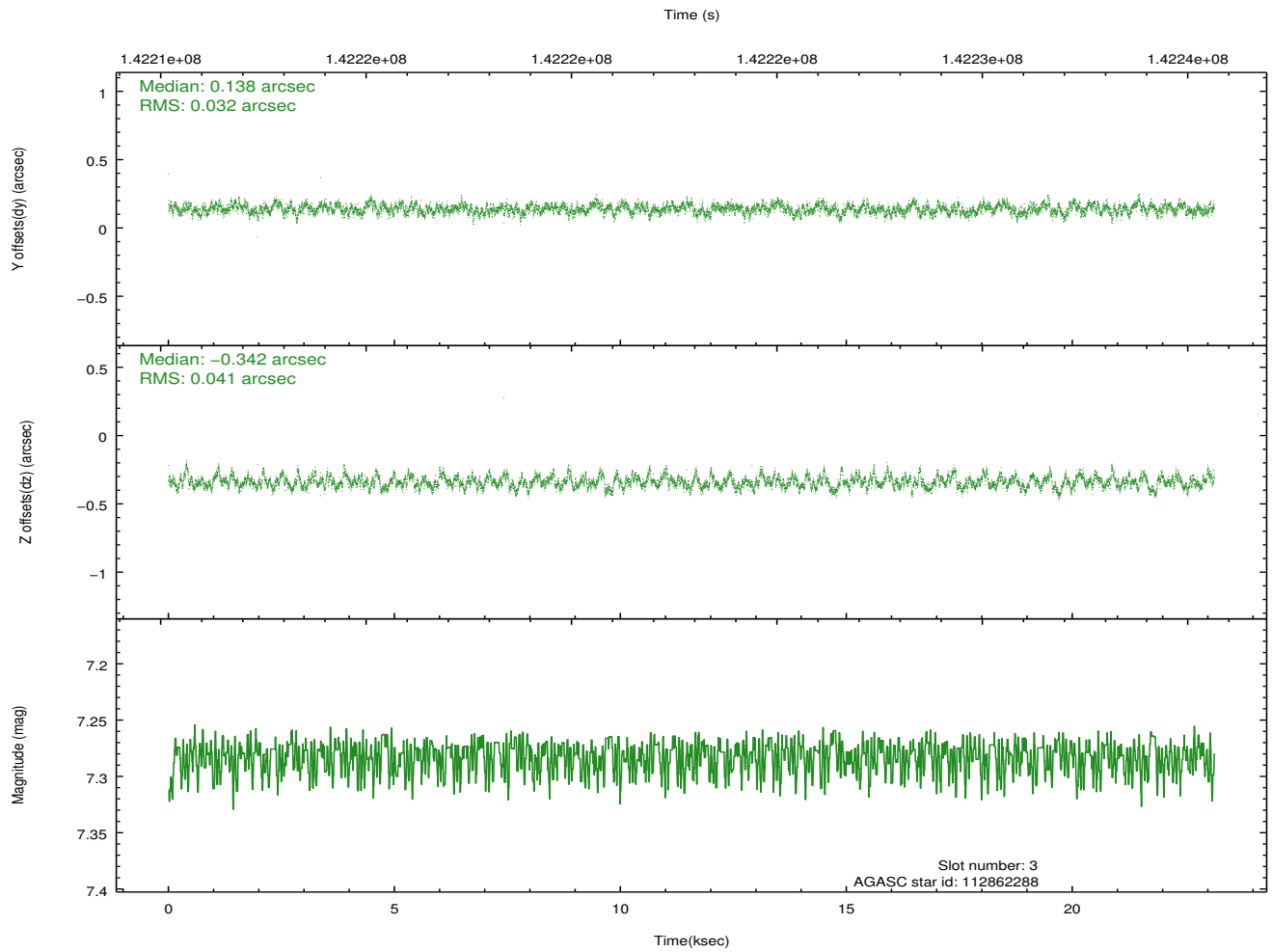
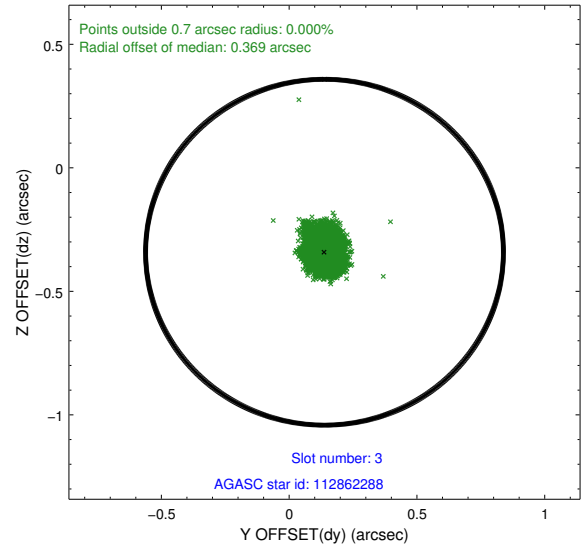
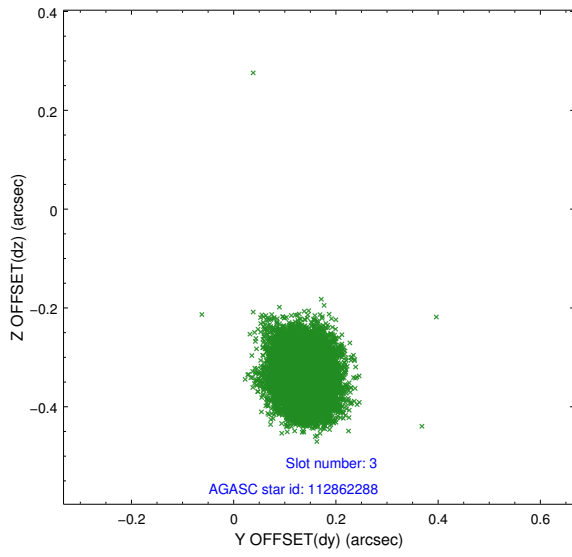


Slot Statistics

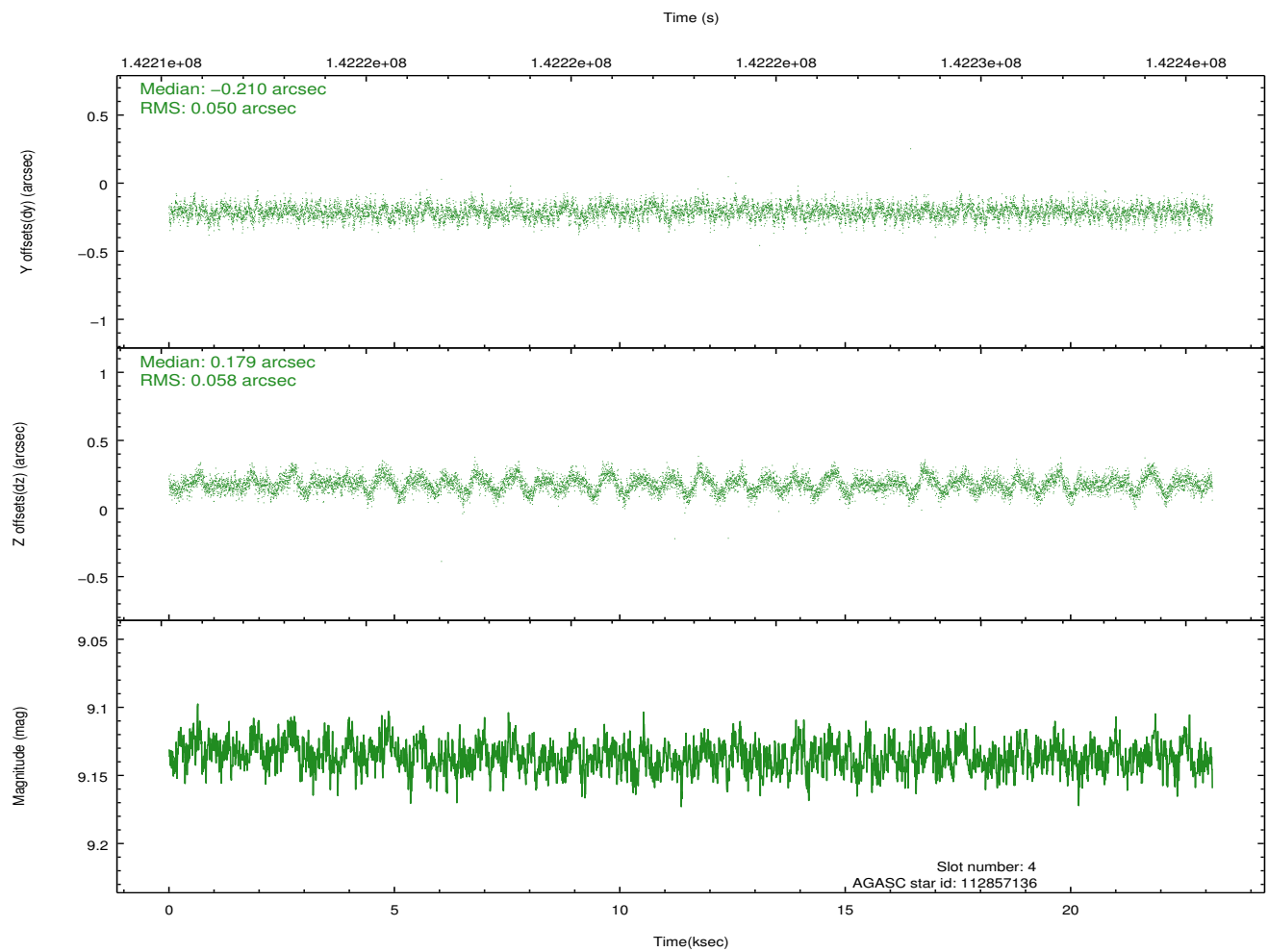
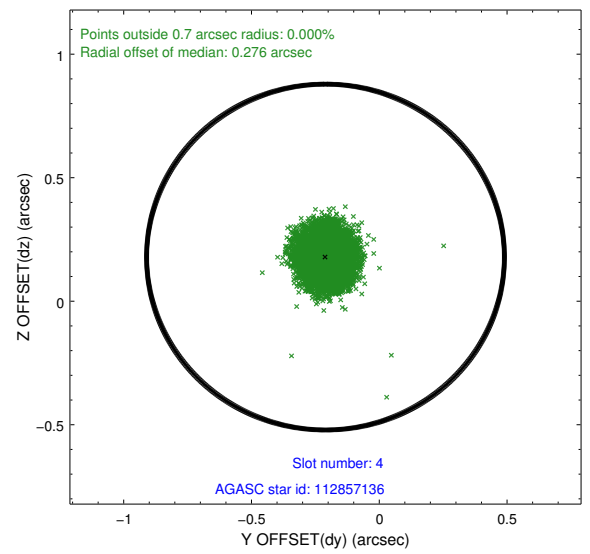
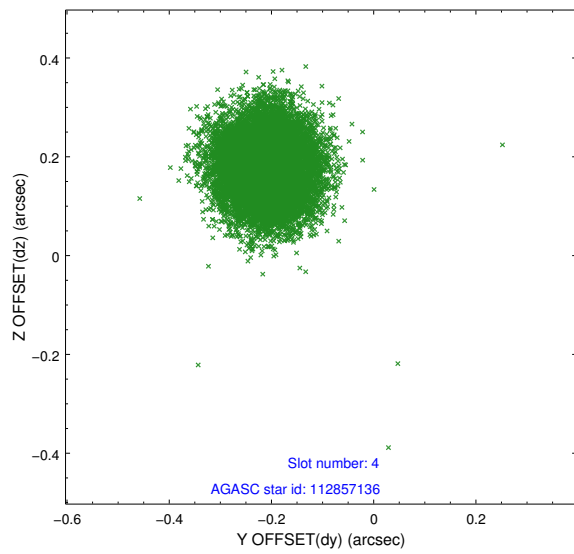
slot	status	id	mag	n_pts	med_dy	med_dz	dr1	dr2	ra	dec	mean_y	mean_z
0	FID	ACIS-S-1	7.18	5644	0.036	-0.043	0.019	0.024	0.000000	0.000000	941.23	-1724.23
1	FID	ACIS-S-5	7.24	5644	-0.011	0.042	0.010	0.023	0.000000	0.000000	-1807.71	173.29
2	FID	ACIS-S-6	7.35	5645	-0.047	0.011	0.027	0.039	0.000000	0.000000	406.59	817.36
3	GUIDE	112862288	7.28	11283	0.138	-0.342	0.055	0.091	169.777560	13.390753	1047.29	-1039.22
4	GUIDE	112857136	9.14	11276	-0.210	0.179	0.082	0.130	170.586186	13.944462	-1642.92	1138.07
5	GUIDE	112862424	9.42	11281	-0.056	0.126	0.077	0.125	170.459633	13.475243	102.81	1176.09
6	GUIDE	112857720	9.38	11280	-0.008	-0.062	0.094	0.154	169.841312	13.775016	-344.75	-1199.83
7	GUIDE	112862568	9.61	11276	0.136	0.098	0.117	0.190	170.030630	13.021719	2084.49	175.97

2.4 Star Slots

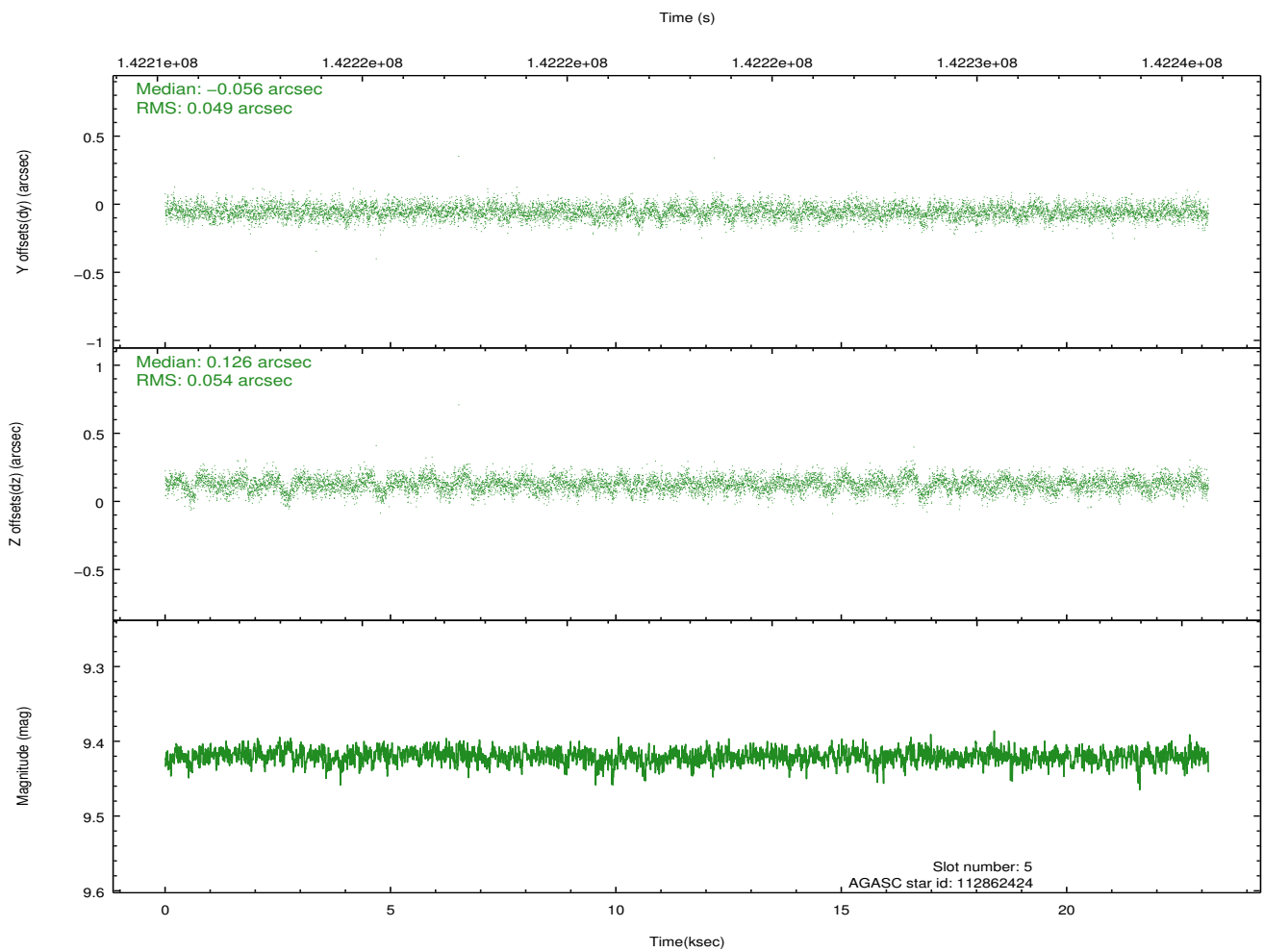
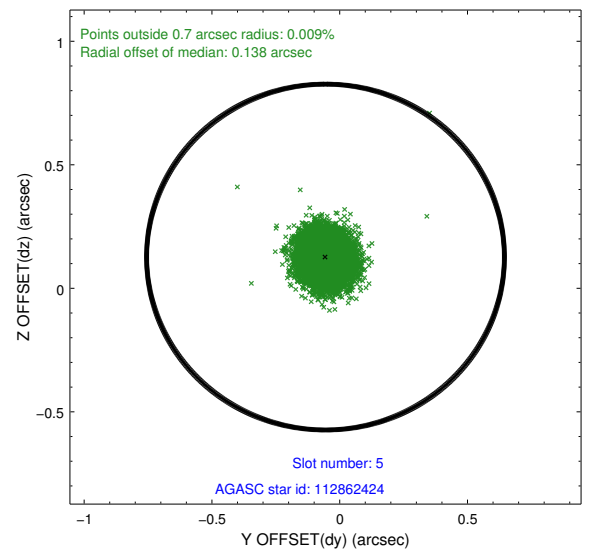
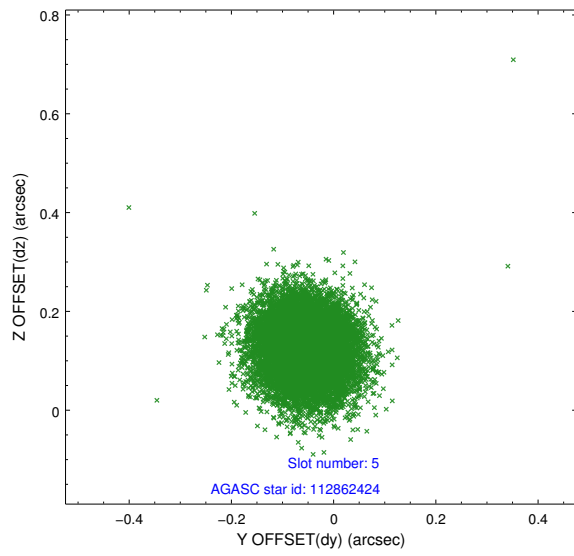
2.4.1 Slot 3



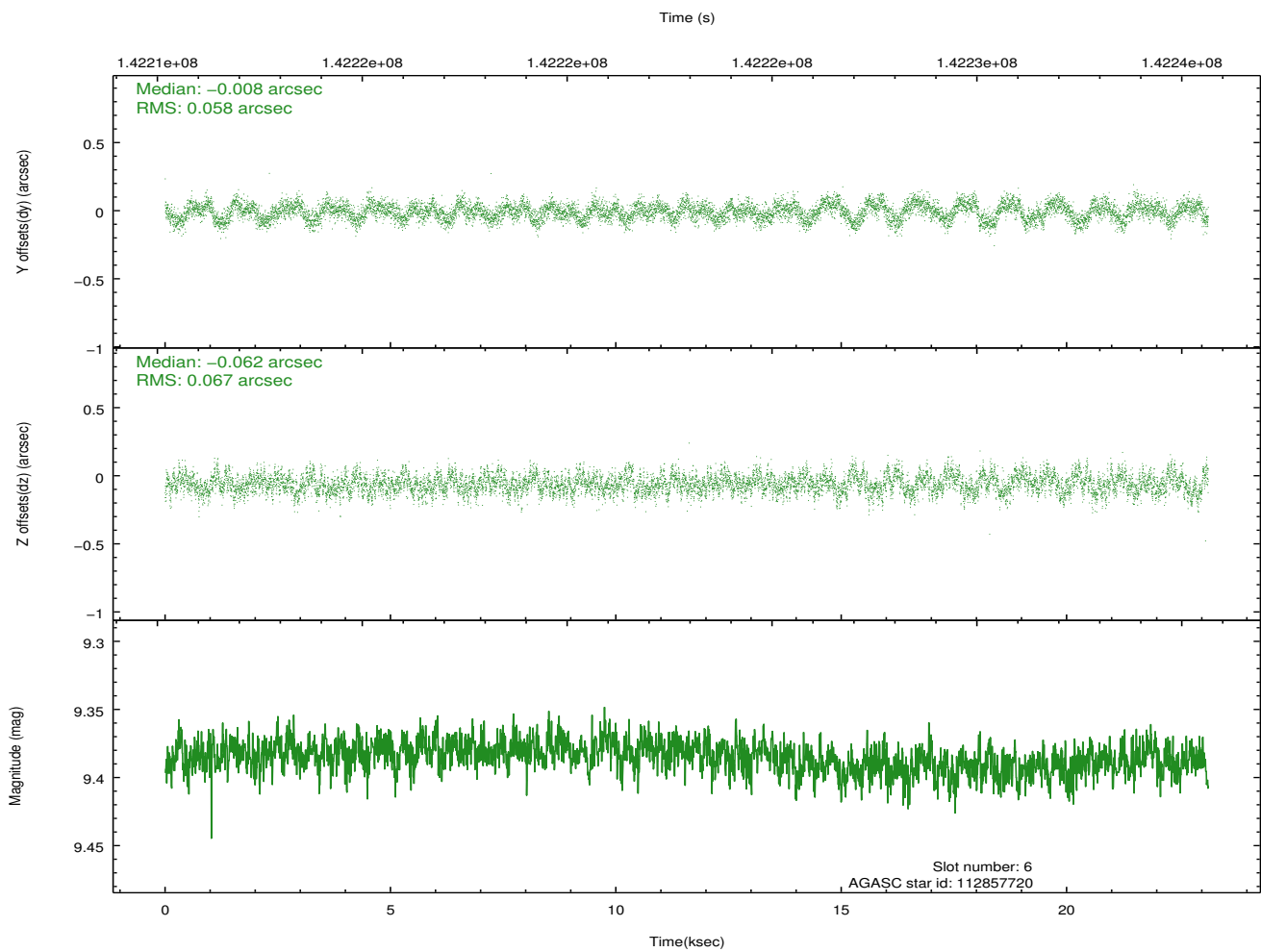
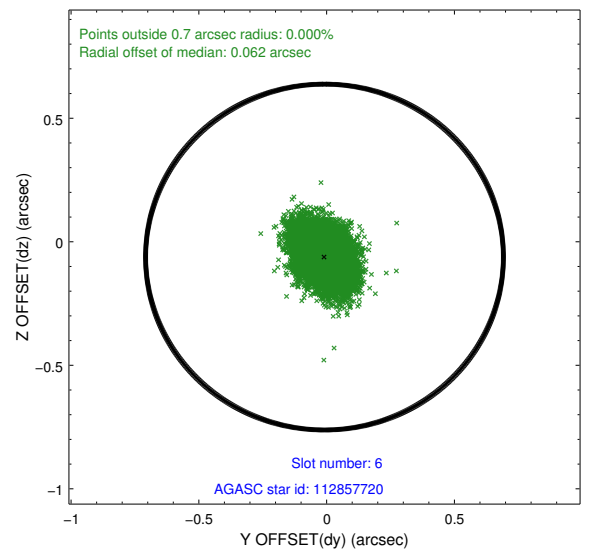
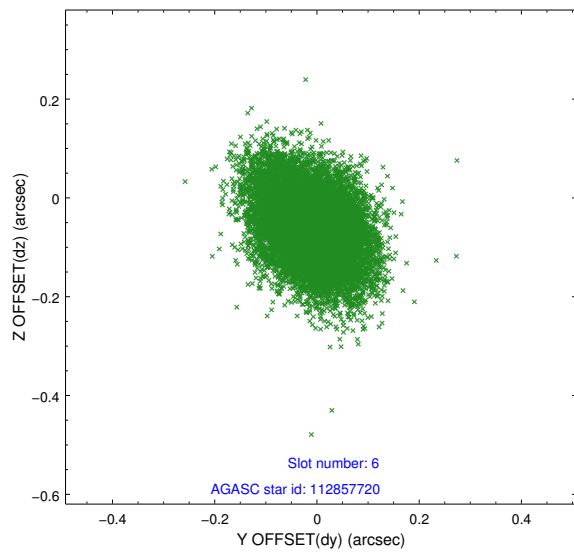
2.4.2 Slot 4



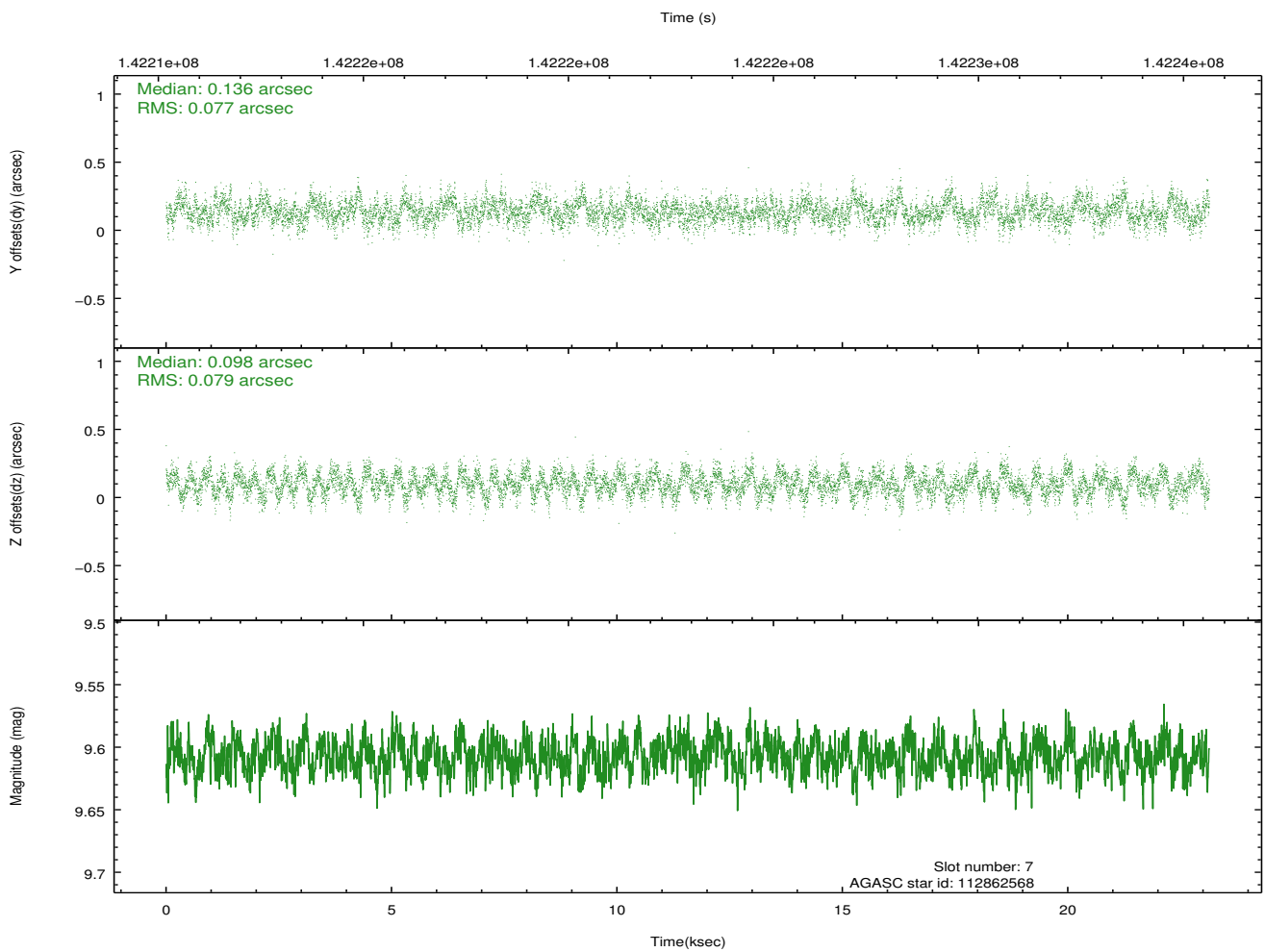
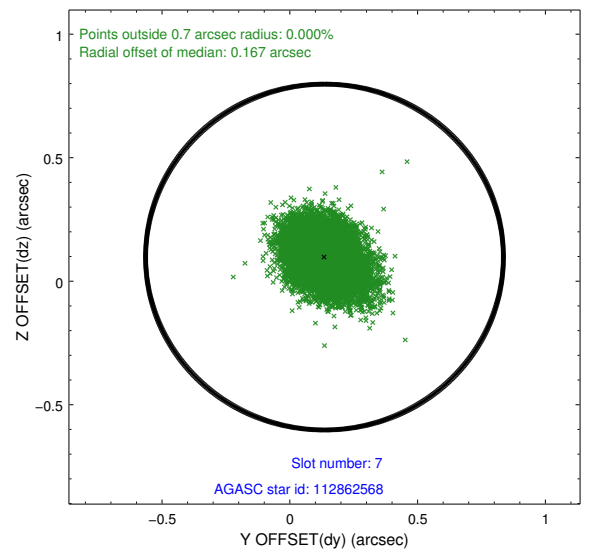
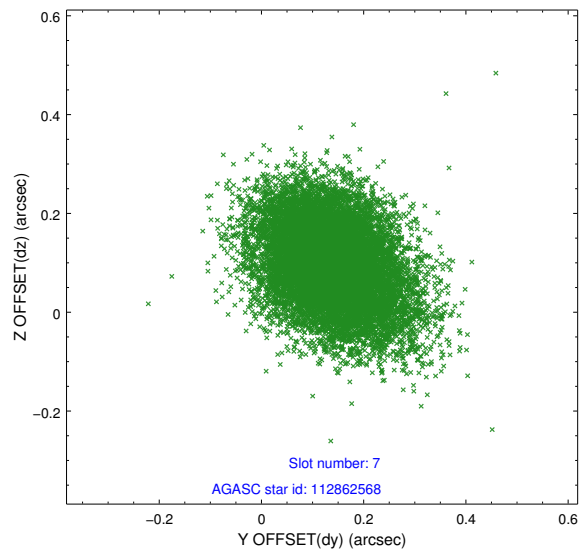
2.4.3 Slot 5



2.4.4 Slot 6

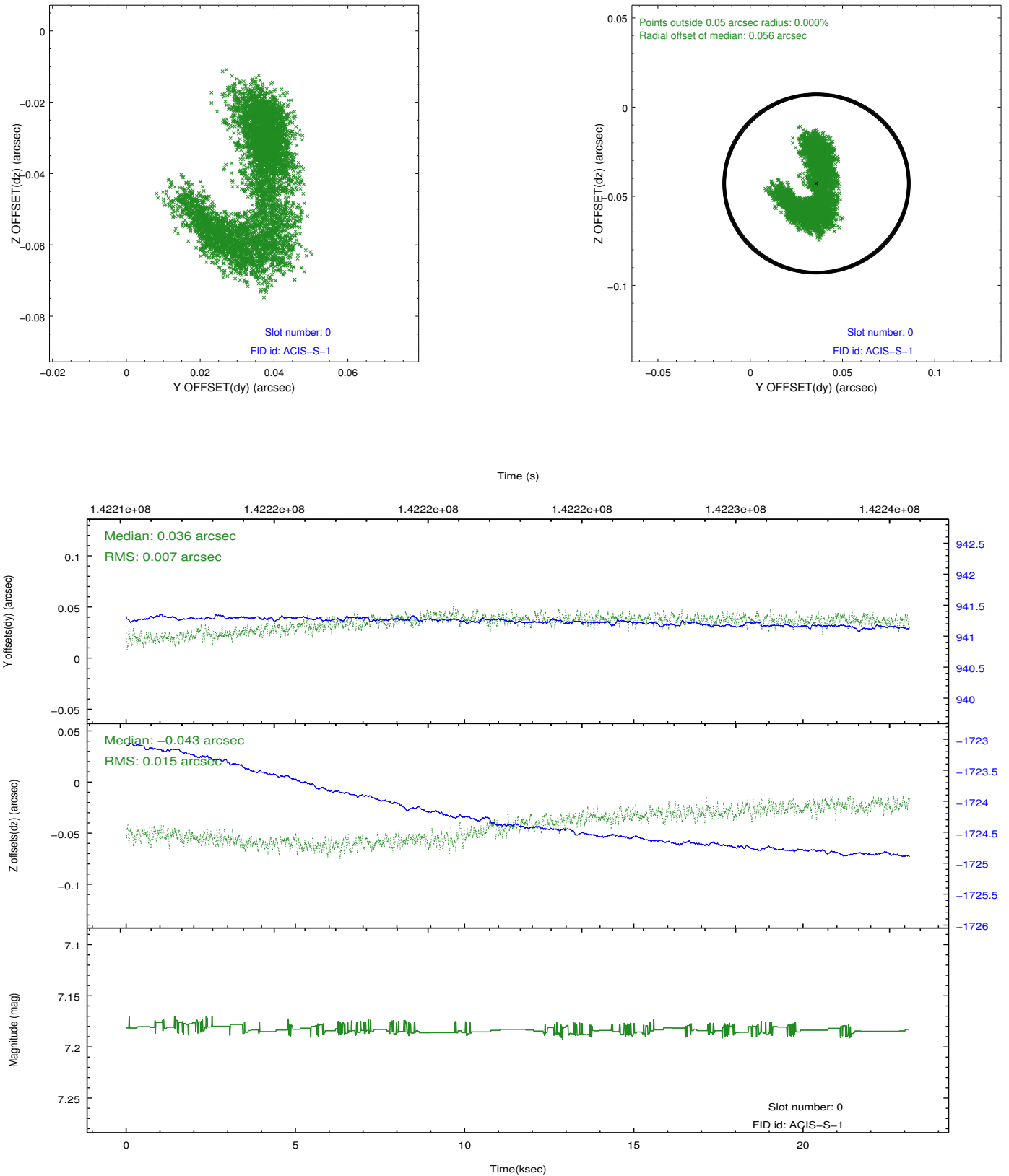


2.4.5 Slot 7

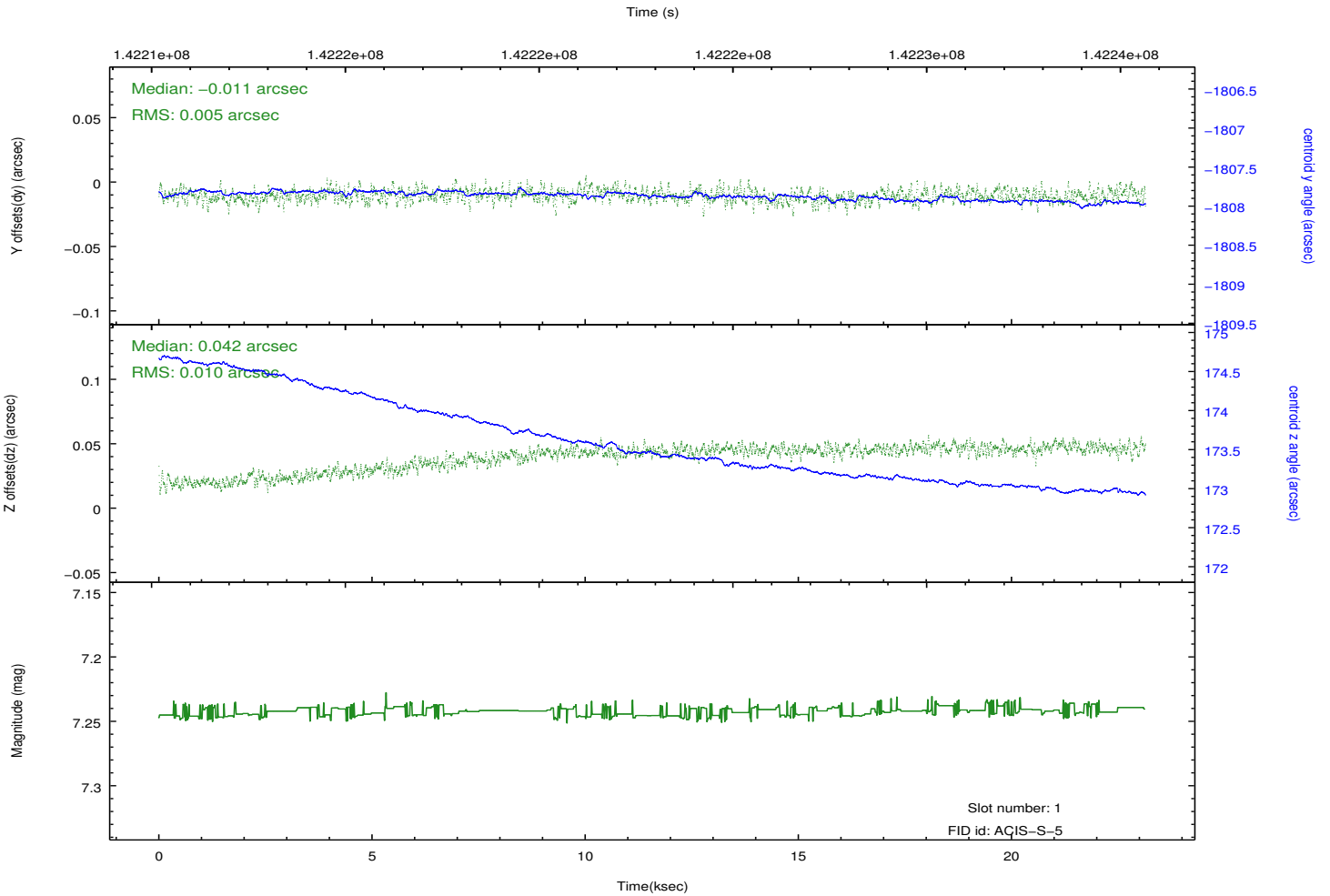
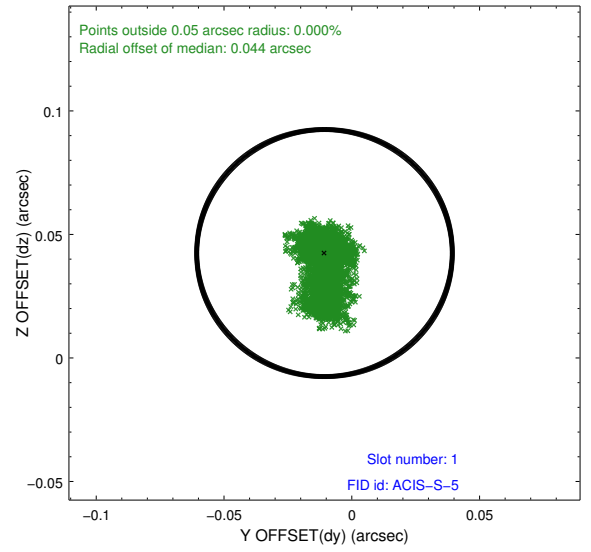
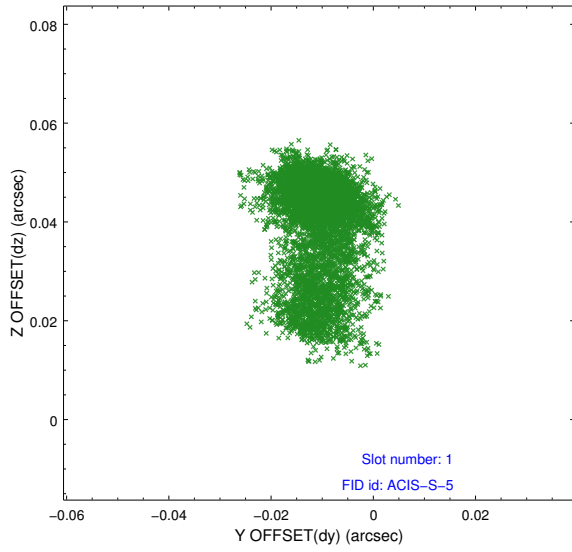


2.5 FID Slots

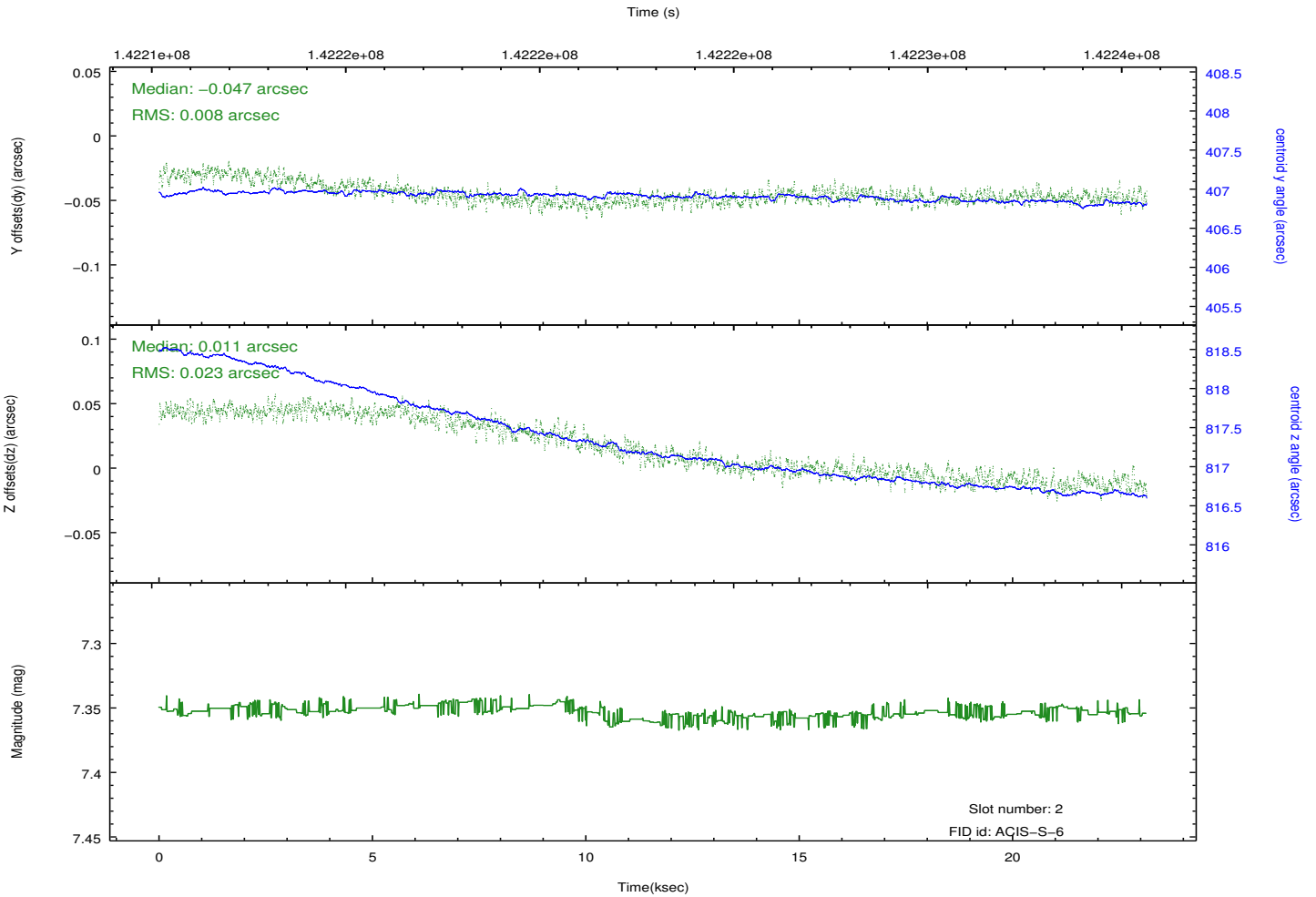
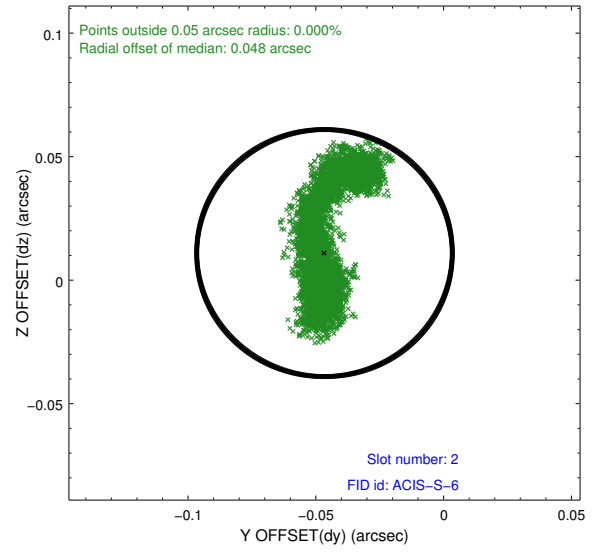
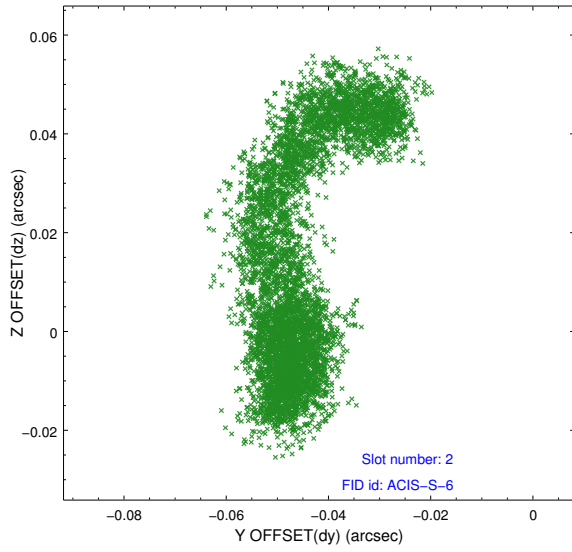
2.5.1 Slot 0



2.5.2 Slot 1



2.5.3 Slot 2



A Summary

A.1 Status

V&V Scientist	Jen Lauer
V&V Date (YYYY-MM-DD)	2012.10.19
V&V Edition	1
V&V Disposition and Status	OK
V&V Charge Time	22.764

A.2 Comments