

V&V Reference Report

L2 ASCDS Version : 8.4.5

Observation 2939 - L2 Version 4
Chandra X-Ray Center

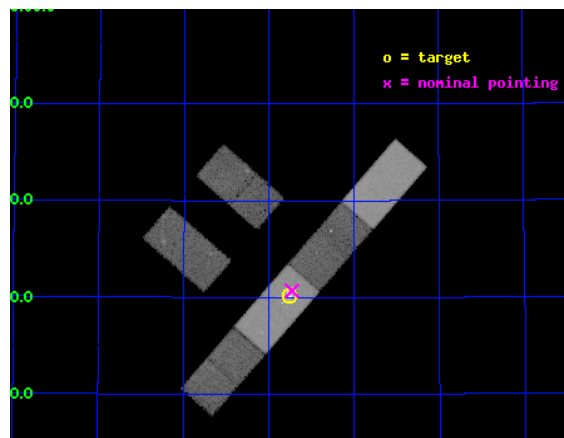
L2 Processing Date : Oct 21 2012

Contents

1	Front	2
2	OBI	3
2.1	OBI	3
2.1.1	Images	3
2.1.2	Bias	3
2.1.3	Parameters	4
2.1.4	Events	4
2.2	Compared Parameters	5
2.3	Aspect	6
2.4	Star Slots	9
2.4.1	Slot 3	9
2.4.2	Slot 4	10
2.4.3	Slot 5	11
2.4.4	Slot 6	12
2.4.5	Slot 7	13
2.5	FID Slots	14
2.5.1	Slot 0	14
2.5.2	Slot 1	15
2.5.3	Slot 2	16
A	Summary	17
A.1	Status	17
A.2	Comments	17

1 Front

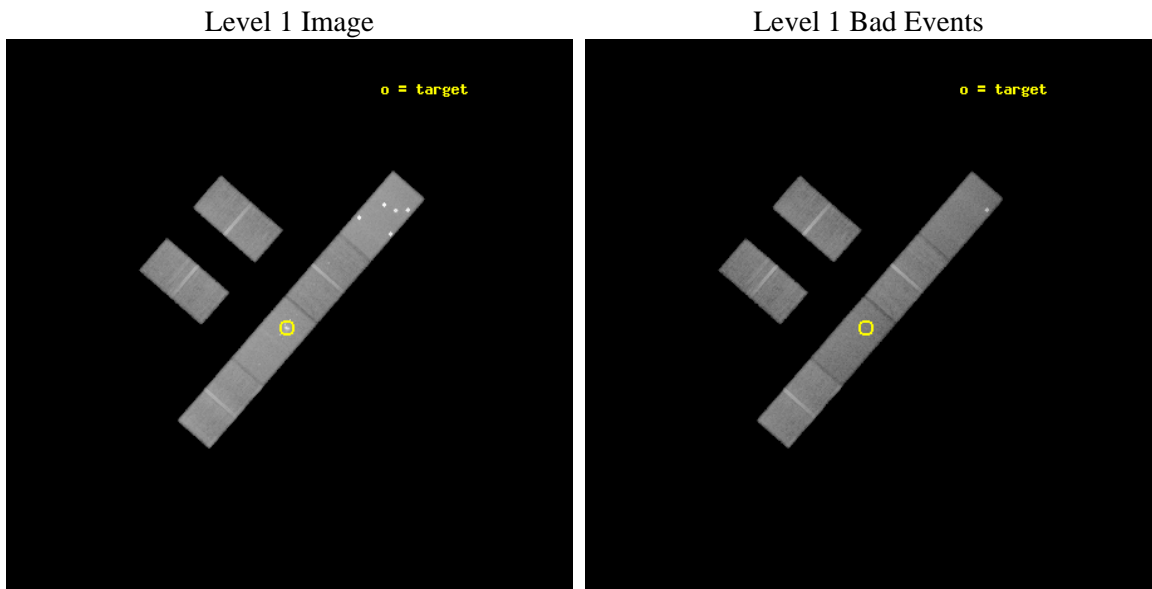
seq_num	600276	Sequence number
obs_id	2939	Observation id
title	CHANDRA OBSERVATIONS OF THE X-RAY LUMINOUS STARBURST GALAXY NGC3310	
observer	Dr Andreas Zezas	Principal investigator
object	NGC 3310	Source name
dtcycle	0	
cycle	P	events from which exps? Prim/Second/Both
ra_targ	159.69125	Observer's specified target RA [deg]
dec_targ	53.503333	Observer's specified target Dec [deg]
ra_nom	159.68290441066	Nominal RA [deg]
dec_nom	53.511601734667	Nominal Dec [deg]
roll_nom	131.07635383396	Nominal Roll [deg]
revision	4	Processing version of data
ontime	48231.000319421	Sum of GTIs [s]
livetime	47155.847007647	Livetime [s]
ontime2	48229.159319282	Sum of GTIs [s]
ontime3	48231.000319421	Sum of GTIs [s]
ontime5	48231.000319421	Sum of GTIs [s]
ontime6	48229.159319252	Sum of GTIs [s]
ontime7	48231.000319421	Sum of GTIs [s]
ontime8	48229.159319252	Sum of GTIs [s]
l2events	274592	Number of level 2 events



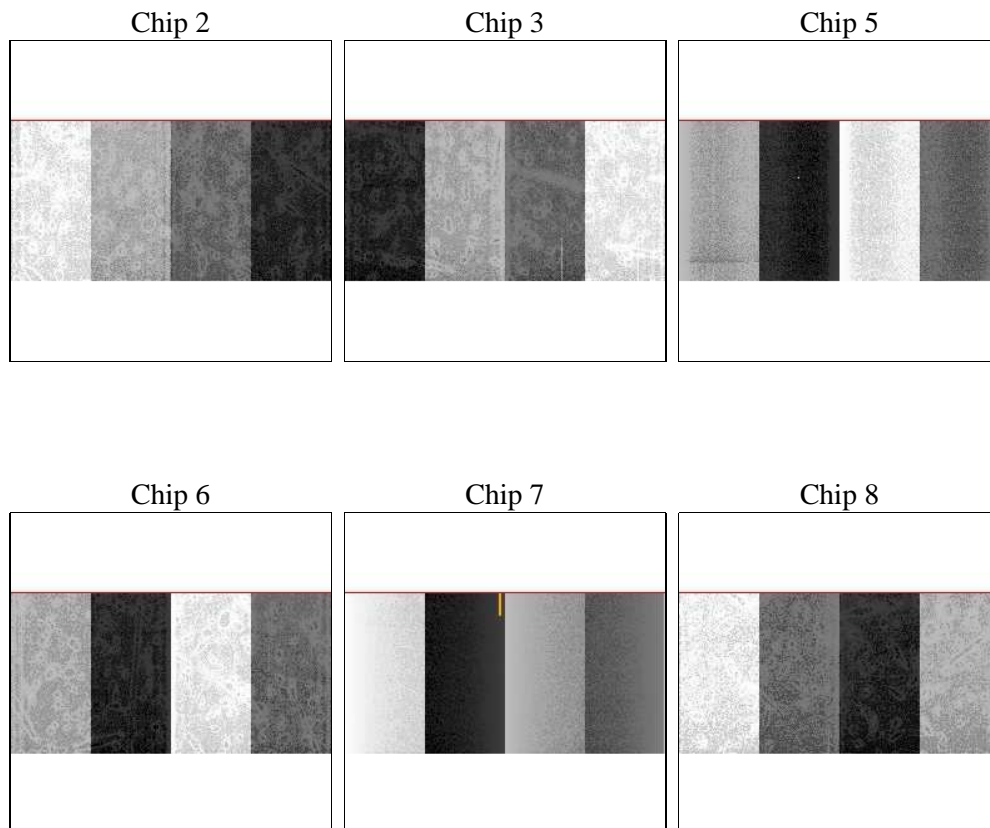
2 OBI

2.1 OBI

2.1.1 Images



2.1.2 Bias



2.1.3 Parameters

obi_num	0	Obi number	sched_exp_time	48000.000000	[s] Scheduled observation exposure time
ascdsver	8.4.5	Processing system revision	ontime	48231.000319421	Sum of GTIs [s]
caldbver	4.5.2	 	ontime2	48229.159319282	Sum of GTIs [s]
date	2012-10-21T08:14:26	Date and time of file creation	ontime3	48231.000319421	Sum of GTIs [s]
revision	4	Processing version of data	ontime5	48231.000319421	Sum of GTIs [s]
			ontime6	48229.159319252	Sum of GTIs [s]
			ontime7	48231.000319421	Sum of GTIs [s]
			ontime8	48229.159319252	Sum of GTIs [s]
			l1events	1240015	Number of level 1 events

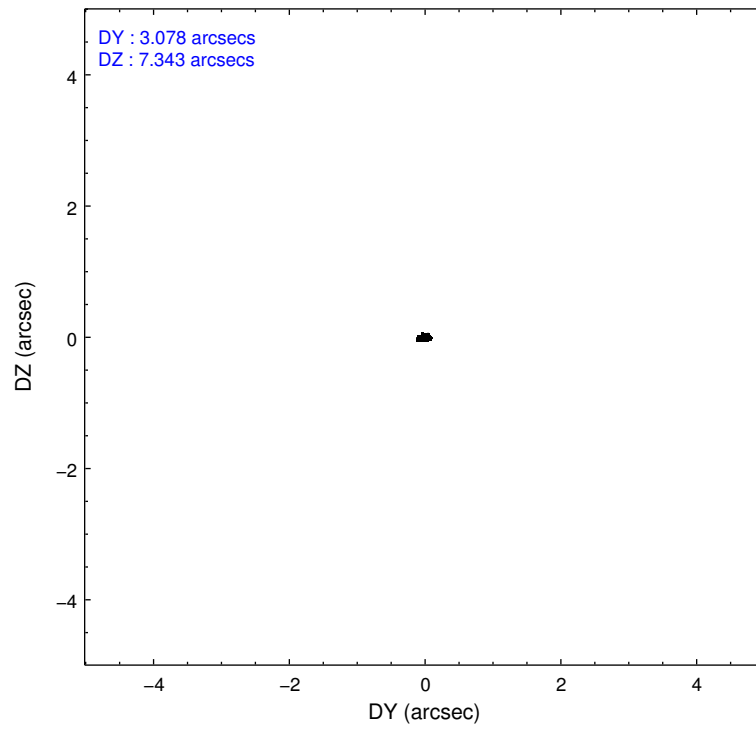
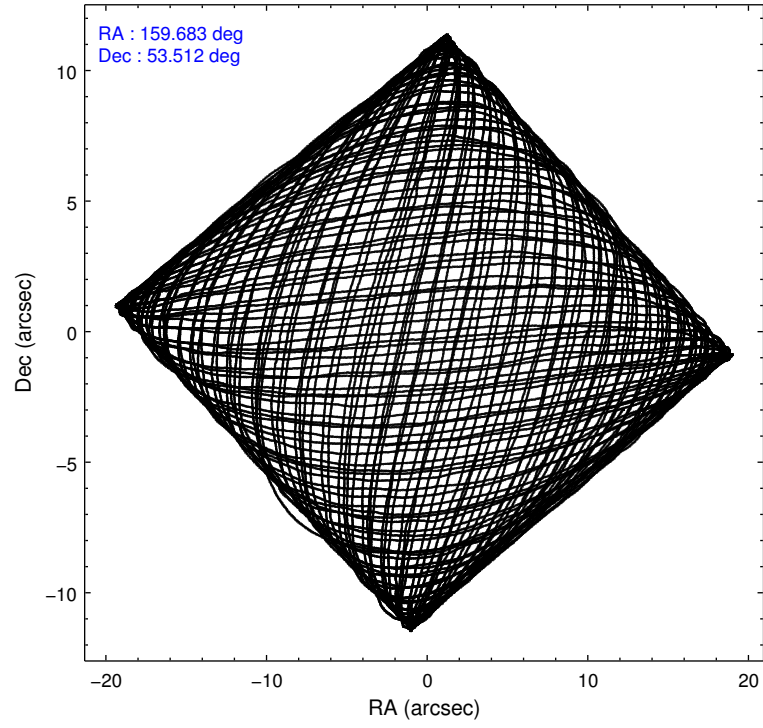
2.1.4 Events

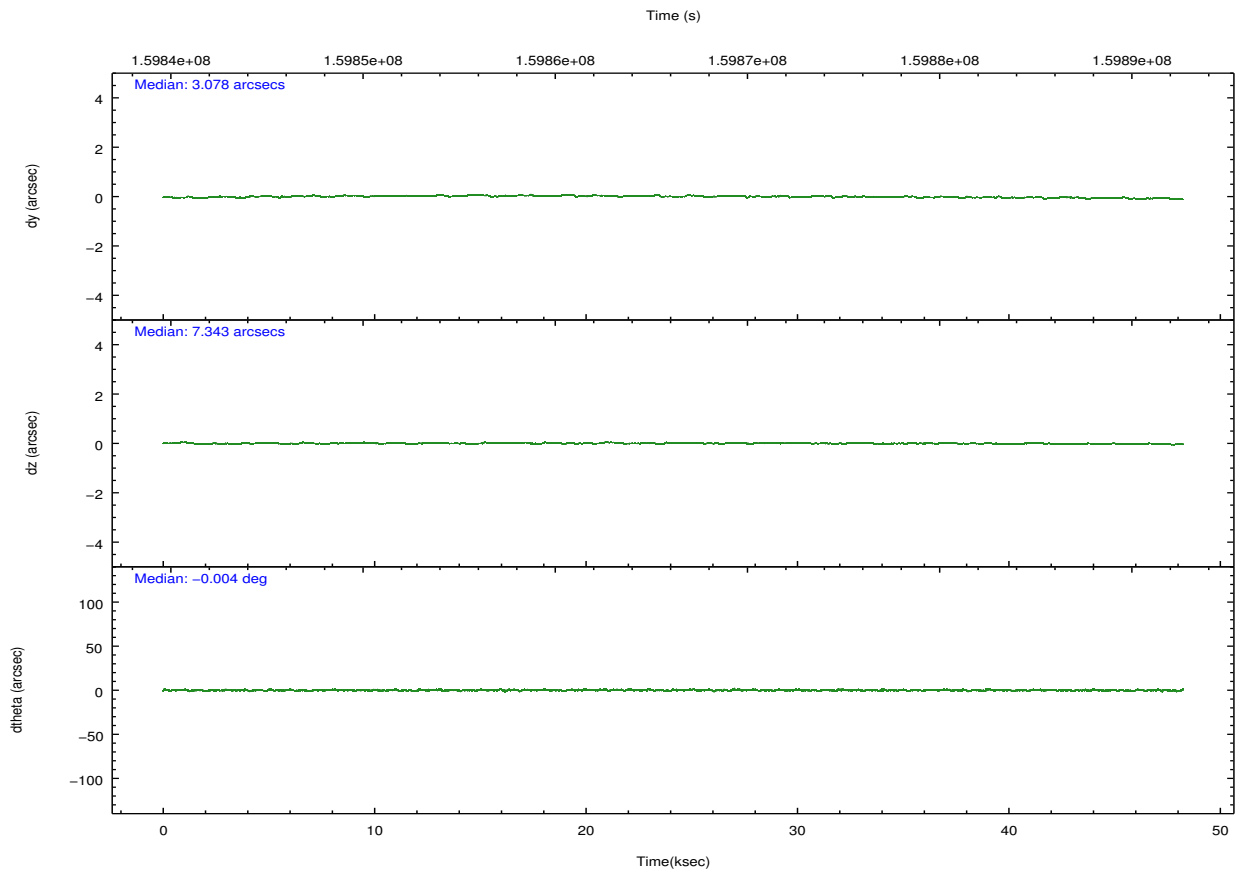
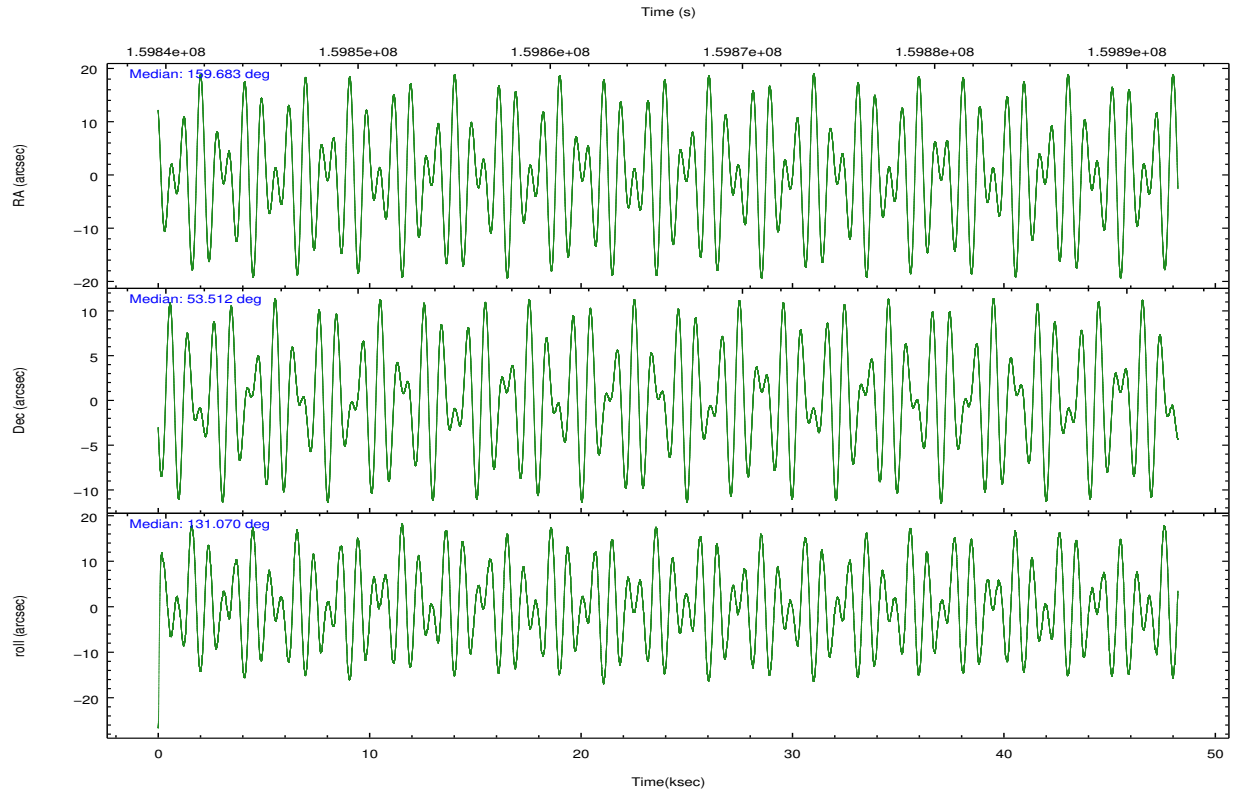
	ccd 2	ccd 3	ccd 5	ccd 6	ccd 7	ccd 8		ccd 2	ccd 3	ccd 5	ccd 6	ccd 7	ccd 8
level 1 events	169617	155981	318517	164446	226912	204542	grade 0 events	8375	7906	98143	8186	14776	12916
rejected events	150422	137478	122958	144398	117109	163807		4%	5%	30%	4%	6%	6%
rejected %	88%	88%	38%	87%	51%	80%	grade 1 events	63	75	3789	52	210	90
								0%	0%	1%	0%	0%	0%
							grade 2 events	3601	3370	32278	3911	23047	8716
								2%	2%	10%	2%	10%	4%
							grade 3 events	2081	2137	5965	2221	10799	4476
								1%	1%	1%	1%	4%	2%
							grade 4 events	2140	2022	5751	2185	10776	4210
								1%	1%	1%	1%	4%	2%
							grade 5 events	5929	6271	16630	6707	19576	8548
								3%	4%	5%	4%	8%	4%
							grade 6 events	3080	3129	53963	3632	50807	10514
								1%	2%	16%	2%	22%	5%
							grade 7 events	144348	131071	101998	137552	96921	155072
								85%	84%	32%	83%	42%	75%

2.2 Compared Parameters

Parameter	Planned	Actual	Parameter	Planned	Actual
Instrument	ACIS	ACIS	Obspar format version number	7	7
Detector	ACIS-235678	ACIS-235678	Obspar file type	PREDICTED	ACTUAL
Grating	NONE	NONE	Obspar update status	NONE	UPDATED
Data mode	FAINT	FAINT	Number of optional ACIS chips dropped	0	0
Observation mode	POINTING	POINTING	On-chip summing requested	N	N
[deg] Pointing RA	159.726378	159.6829044106552	Subarray requested	CUSTOM	1/2
[deg] Pointing Dec	53.503132	53.51160173466744	Subarray start row	257	257
[deg] Pointing Roll	130.884771	131.0763538339643	Subarray row count	512	512
[mm] SIM focus pos	-0.684267	-0.6828225247311905	Alternating exposures requested	N	N
[mm] SIM defocus	0	0.001444936568705701	[s] Primary exposure time	0.000000	1.8
[mm] SIM translation stage pos	-190.132523	-190.1400660498719			
[mm] SIM translation stage offset	0	0.00754346686406393			
[s] Observation start time (MET)	159842247.184000	159841259.55409			
Observation start date	2003-01-25T00:36:23	2003-01-25T00:20:59			
[s] Observation end time (MET)	159890247.184000	159890619.45615			
Observation end date	2003-01-25T13:56:23	2003-01-25T14:03:39			
Read mode	TIMED	TIMED			

2.3 Aspect



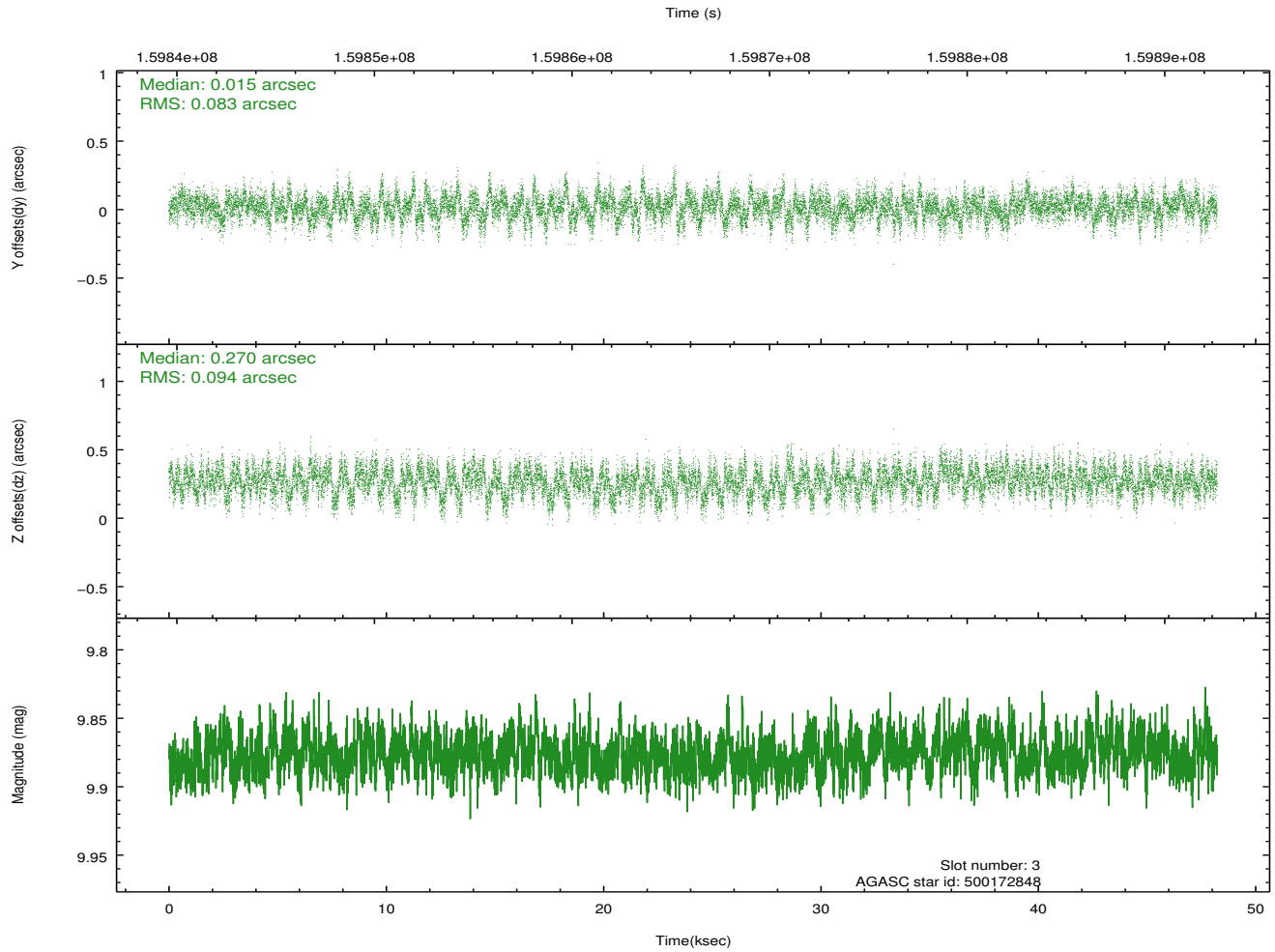
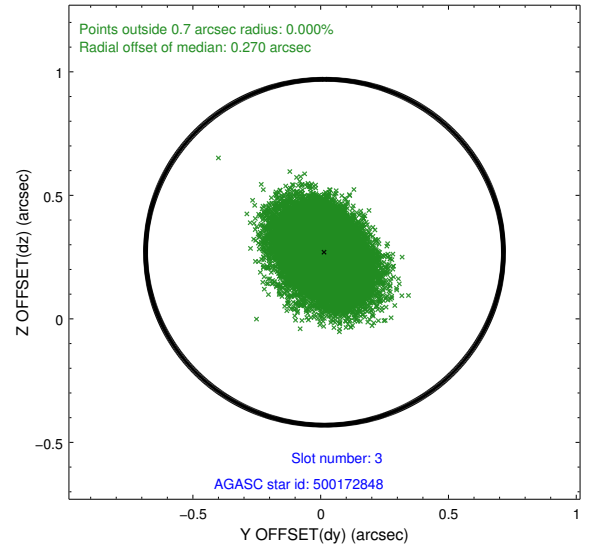
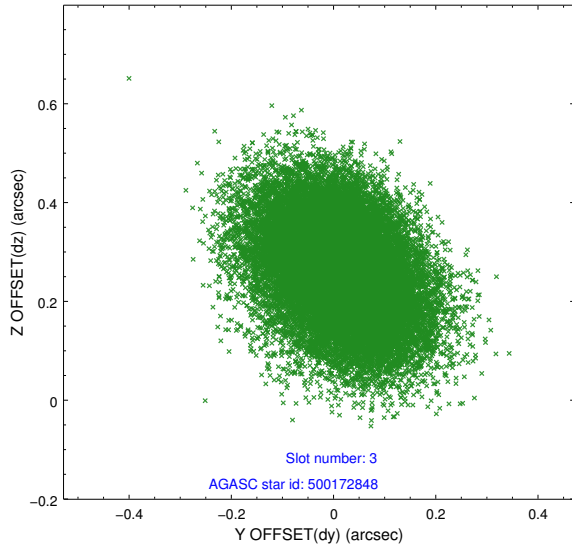


Slot Statistics

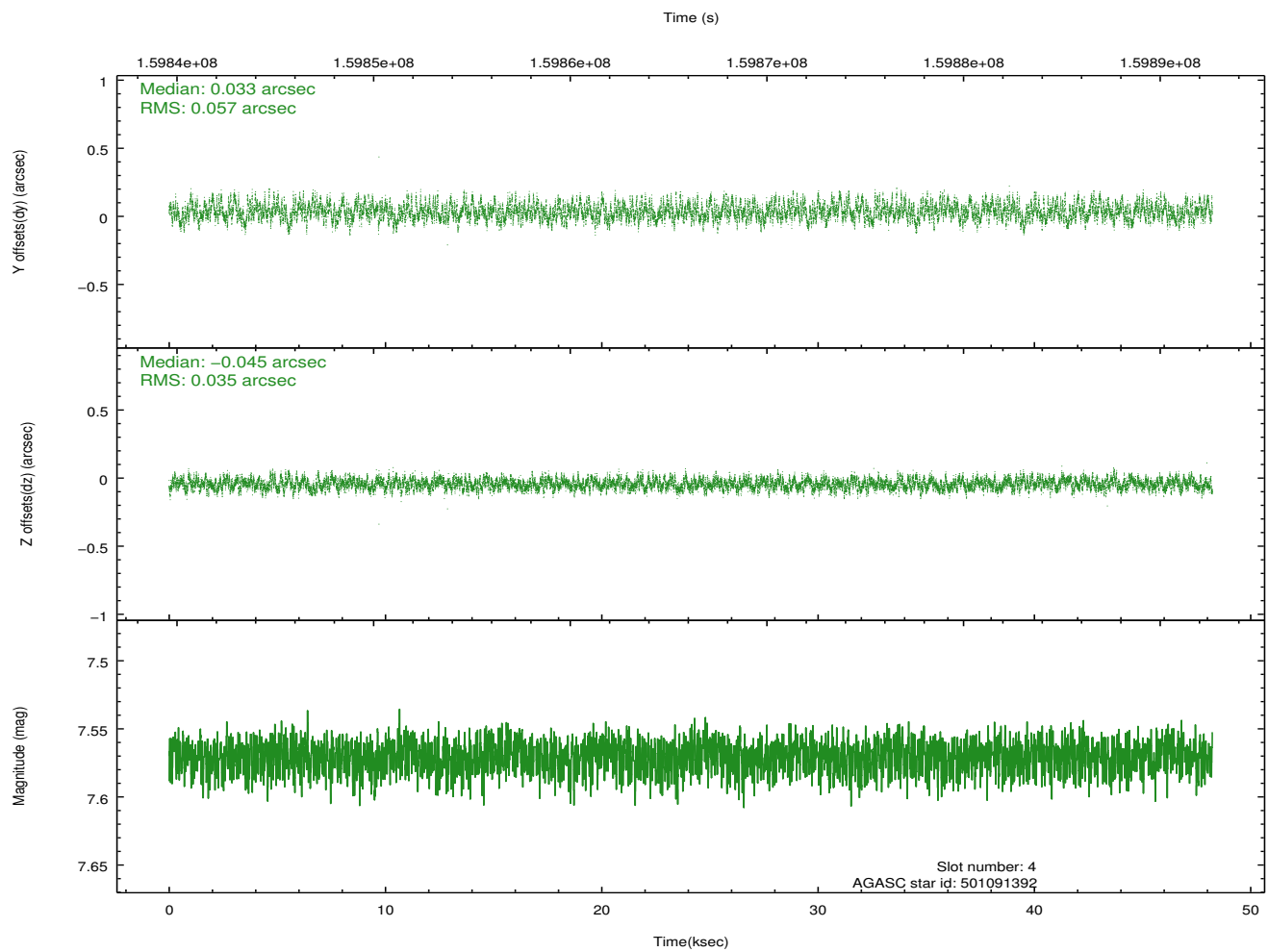
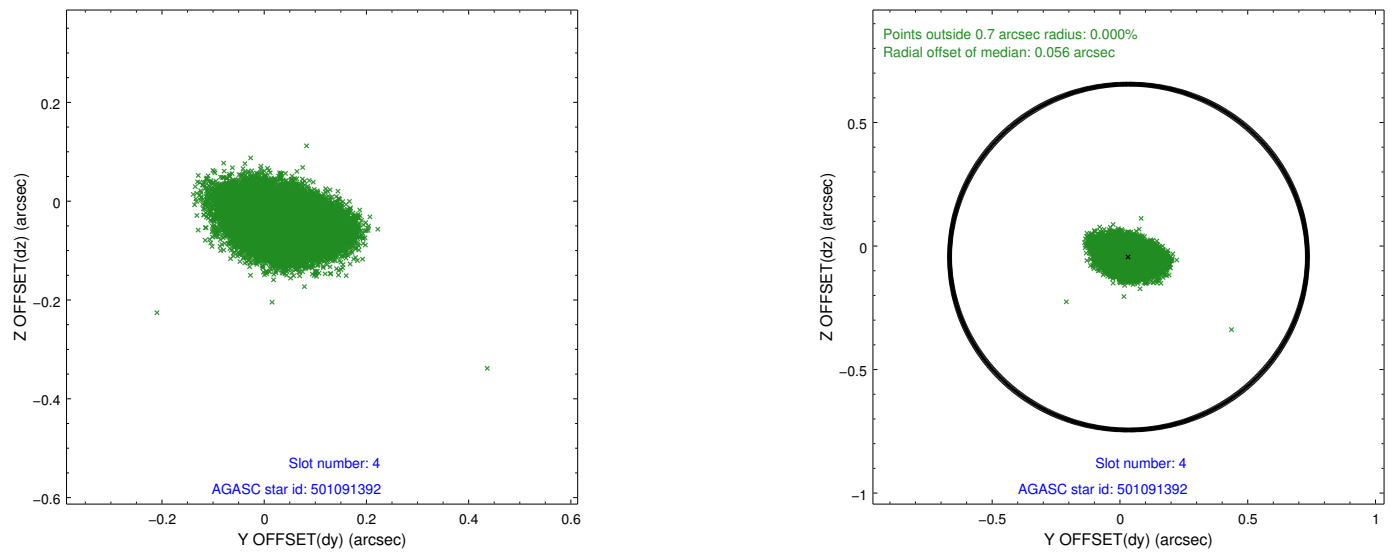
slot	status	id	mag	n_pts	med_dy	med_dz	dr1	dr2	ra	dec	mean_y	mean_z
0	FID	ACIS-S-2	7.12	11764	-0.020	-0.012	0.008	0.012	0.000000	0.000000	-755.73	-1728.53
1	FID	ACIS-S-4	7.20	11762	0.008	0.013	0.007	0.012	0.000000	0.000000	2157.57	180.00
2	FID	ACIS-S-5	7.24	11765	-0.019	0.008	0.007	0.012	0.000000	0.000000	-1808.60	173.64
3	GUIDE	500172848	9.88	23508	0.015	0.270	0.134	0.219	159.746038	54.092437	1577.11	-1419.31
4	GUIDE	501091392	7.57	23528	0.033	-0.045	0.071	0.117	160.324146	52.970595	-2293.25	271.60
5	GUIDE	501092928	7.78	23526	-0.088	-0.028	0.069	0.111	160.280177	53.627423	-432.09	-1189.55
6	GUIDE	500177128	7.86	23527	0.046	-0.049	0.063	0.102	158.210933	53.586826	2373.41	2228.96
7	GUIDE	500171560	10.03	22976	-0.008	-0.148	0.146	0.235	158.370452	53.405557	1660.00	2412.04

2.4 Star Slots

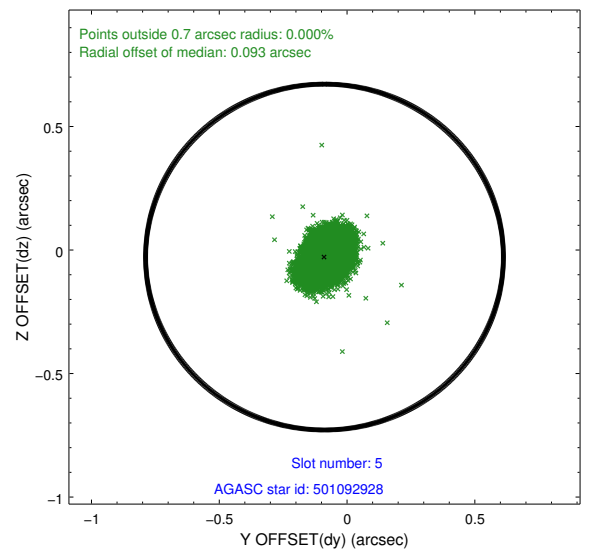
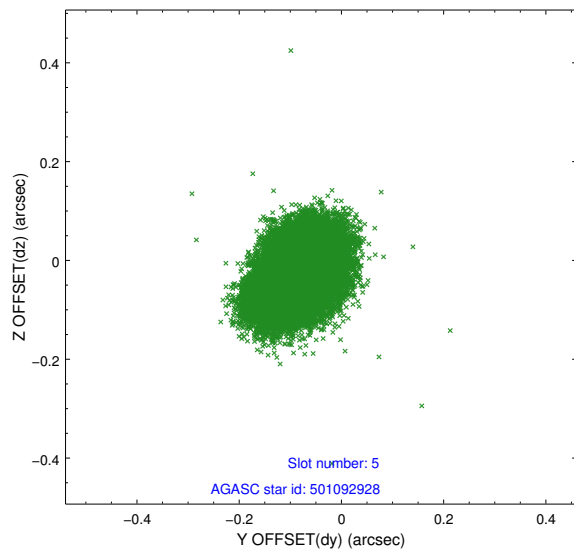
2.4.1 Slot 3



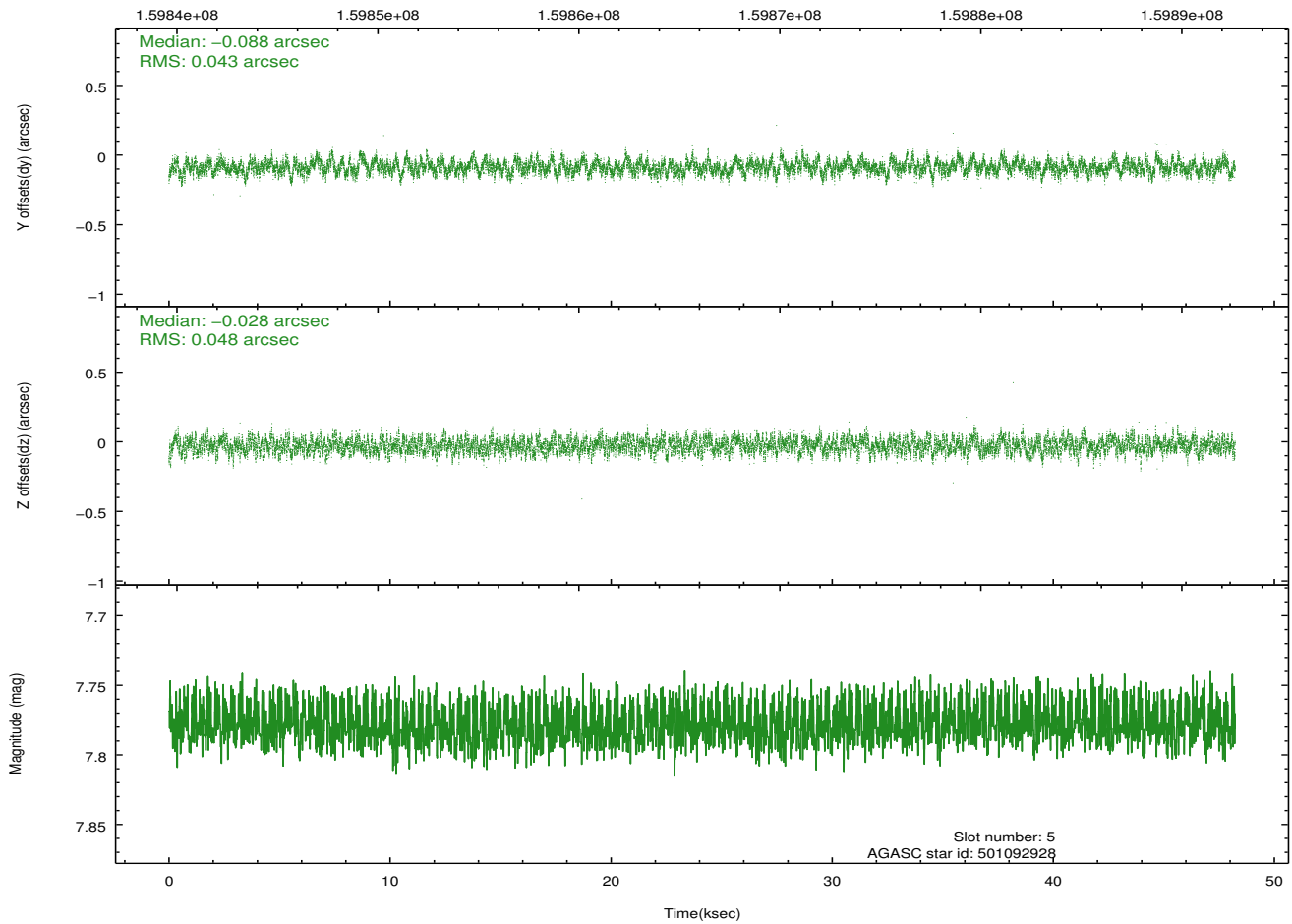
2.4.2 Slot 4



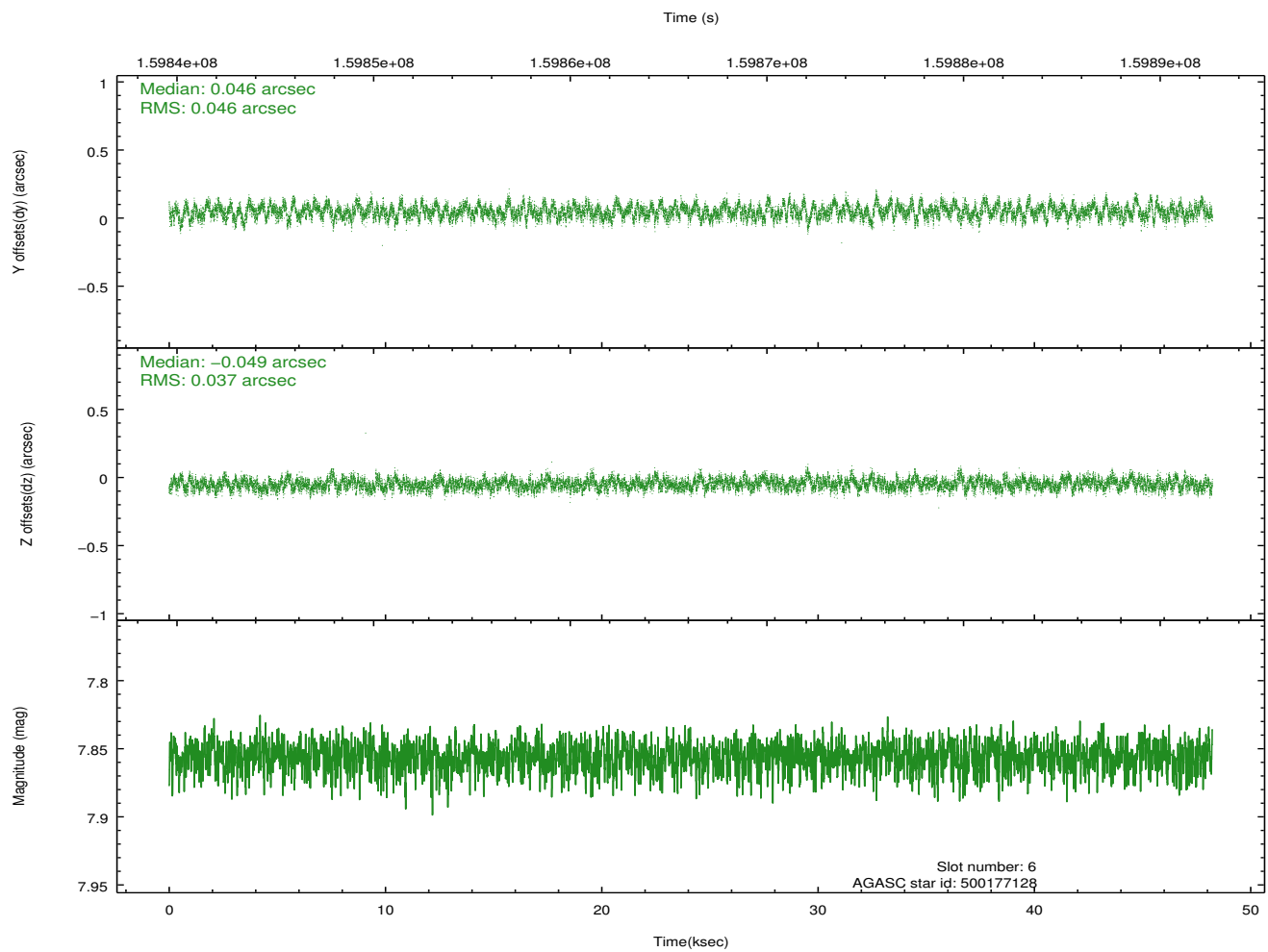
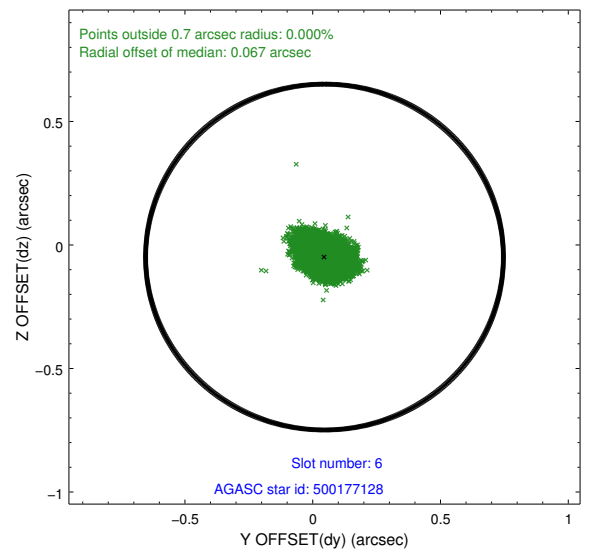
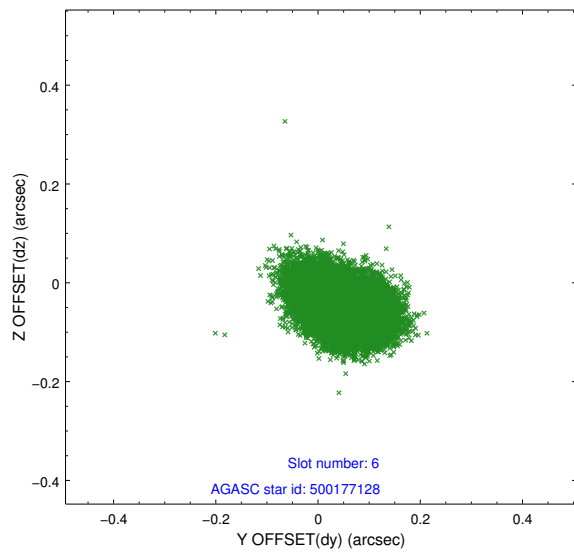
2.4.3 Slot 5



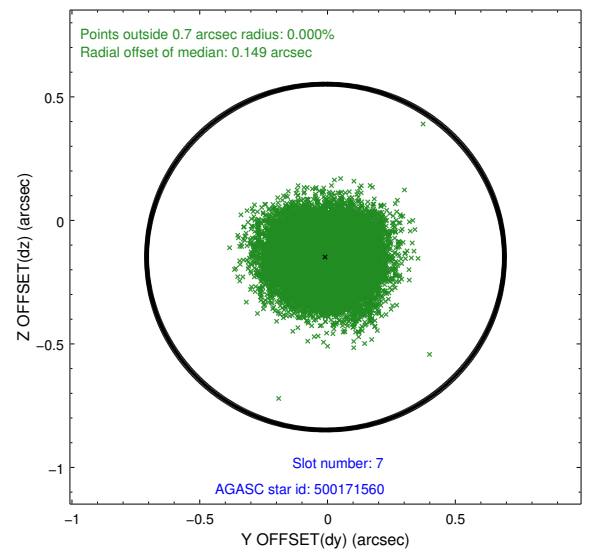
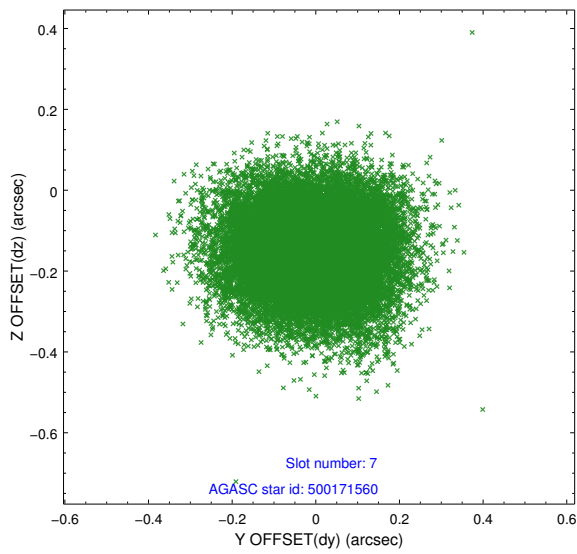
Time (s)



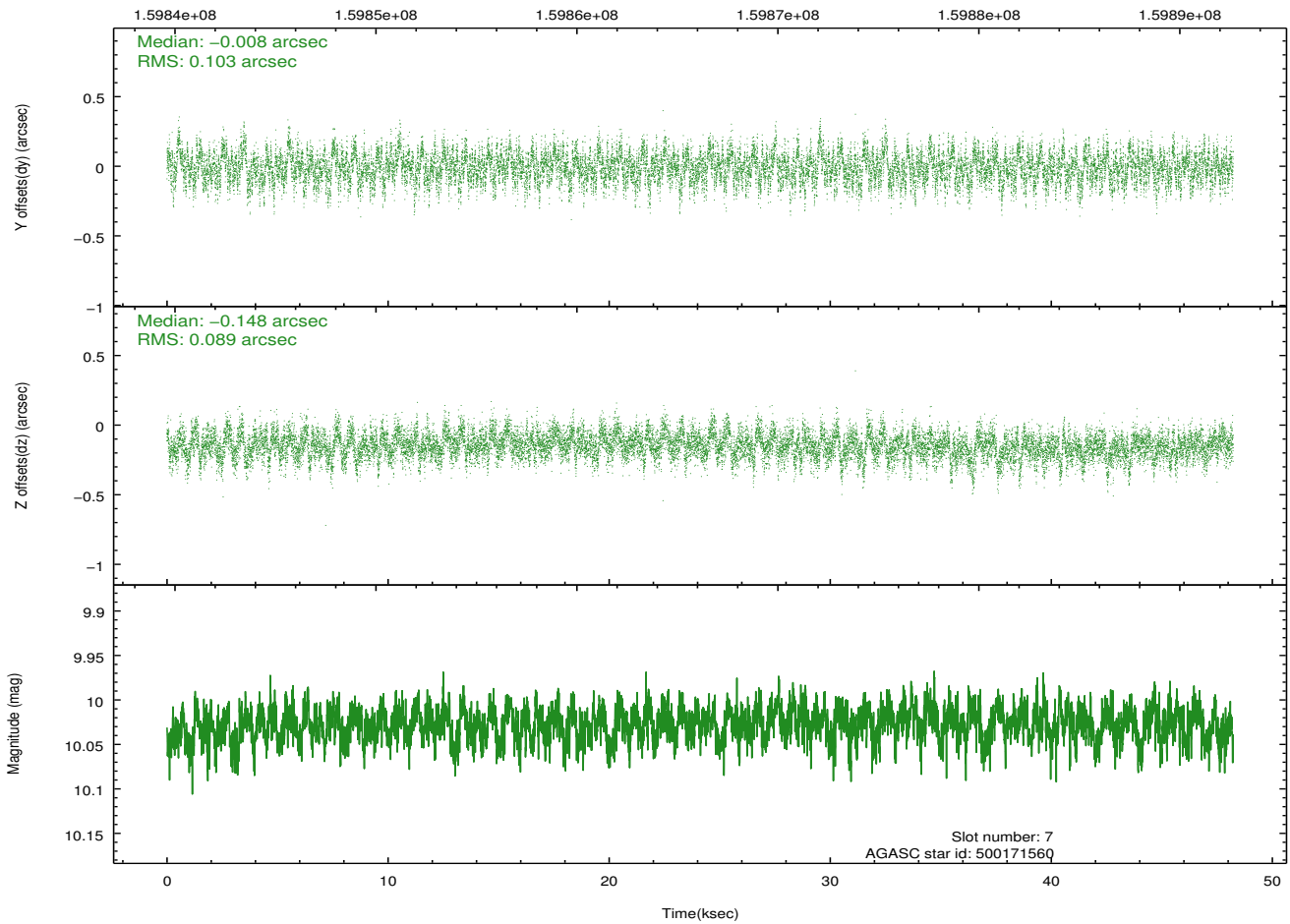
2.4.4 Slot 6



2.4.5 Slot 7

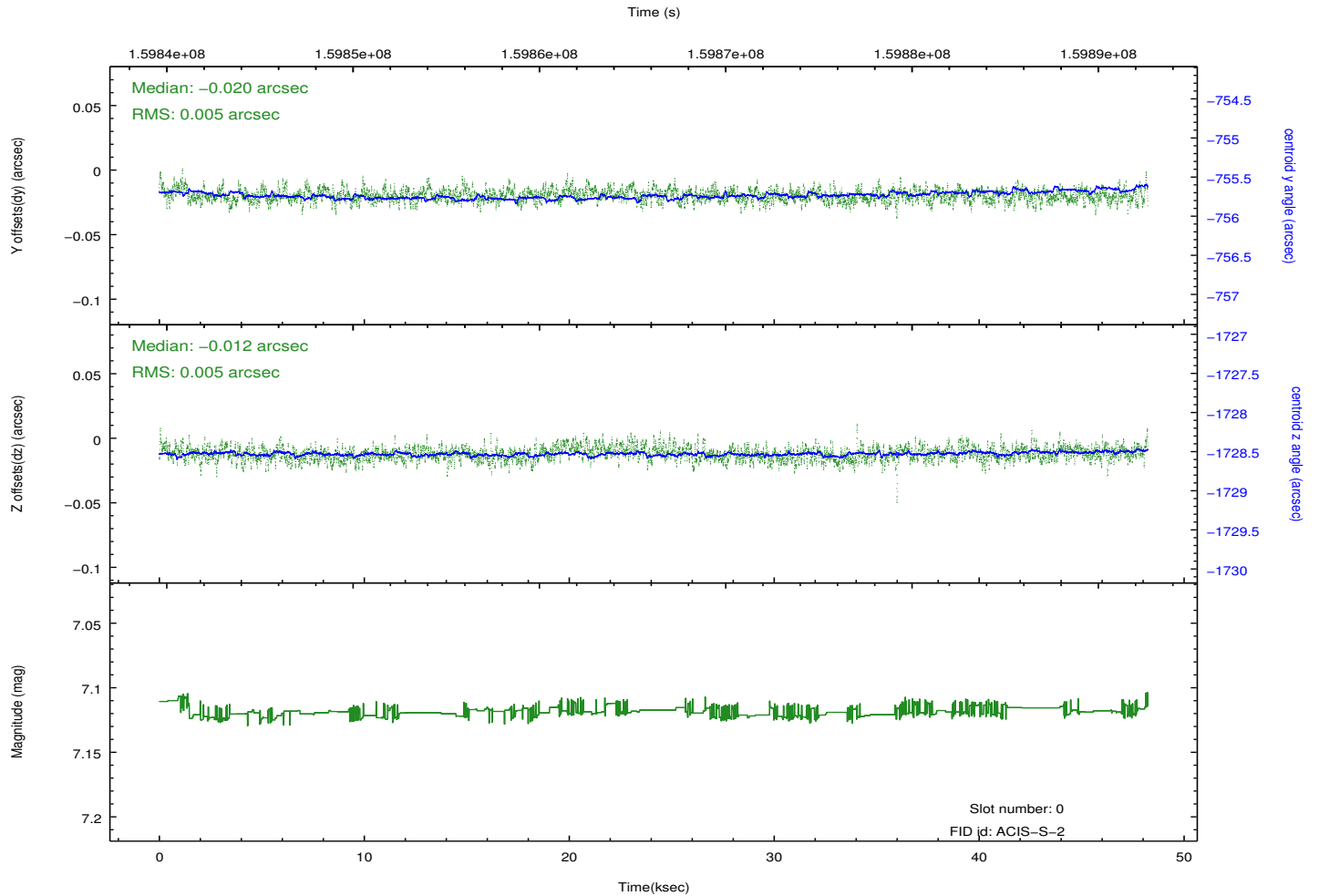
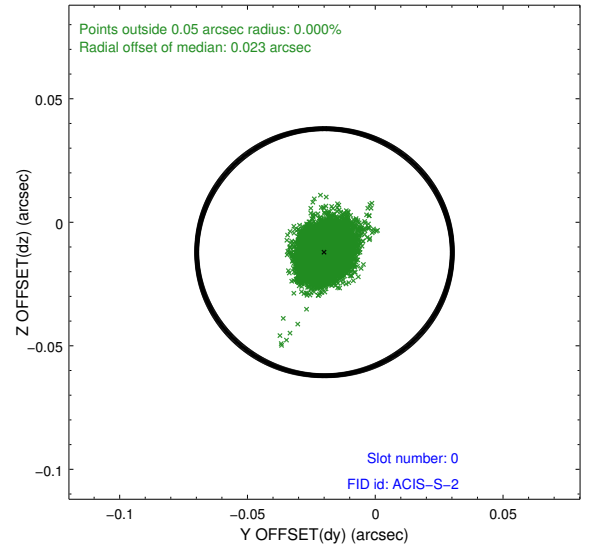
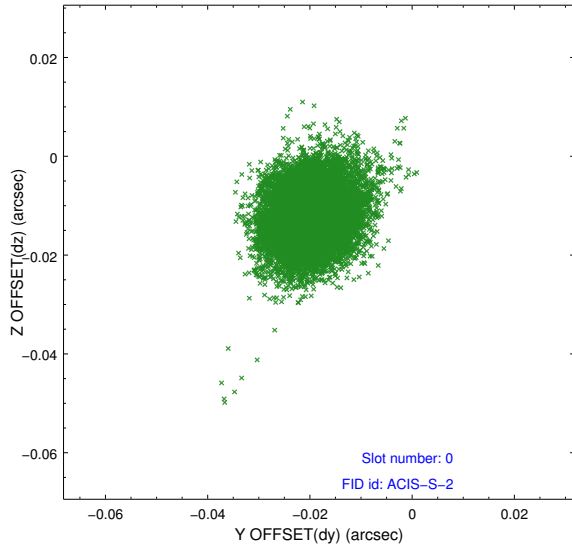


Time (s)

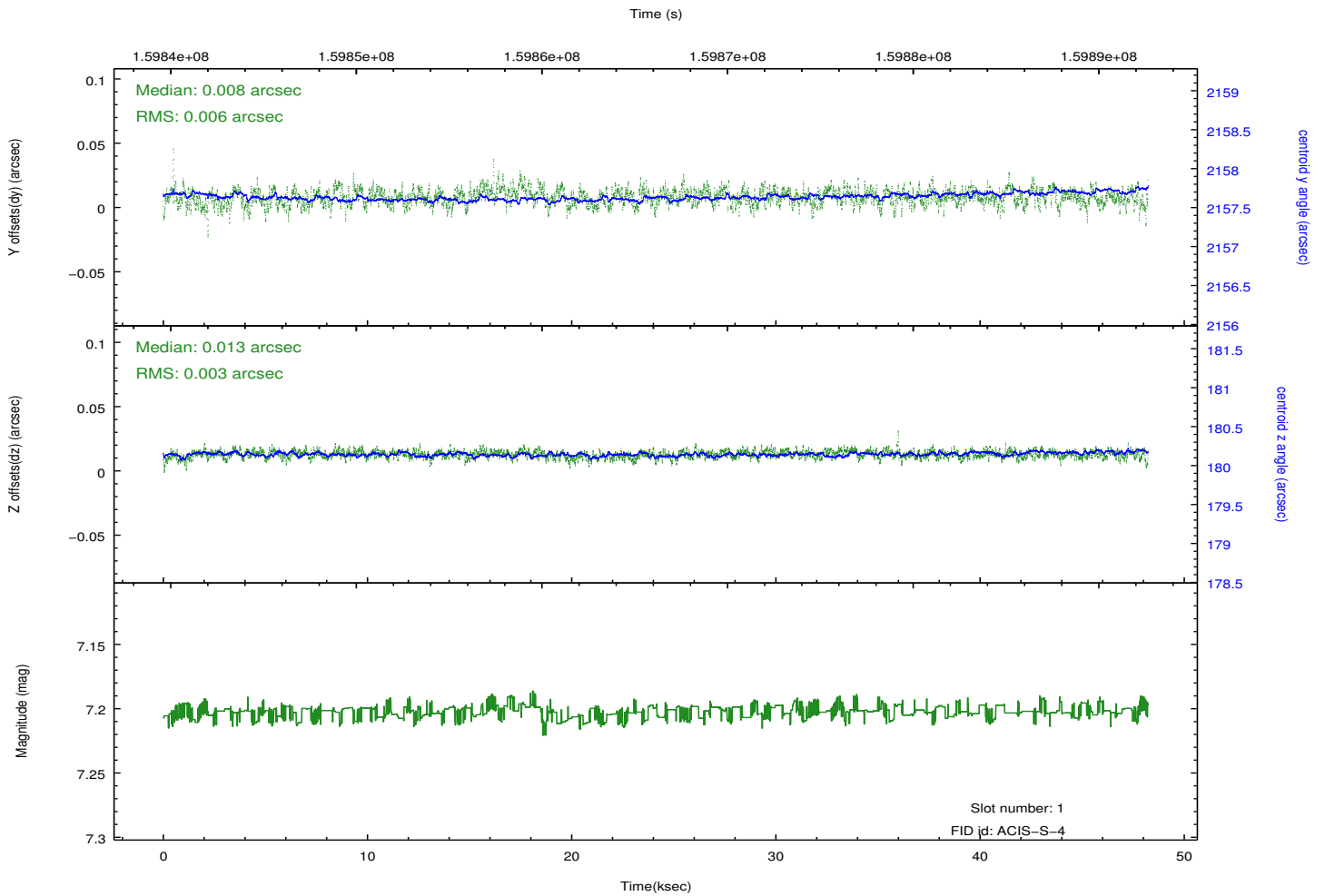
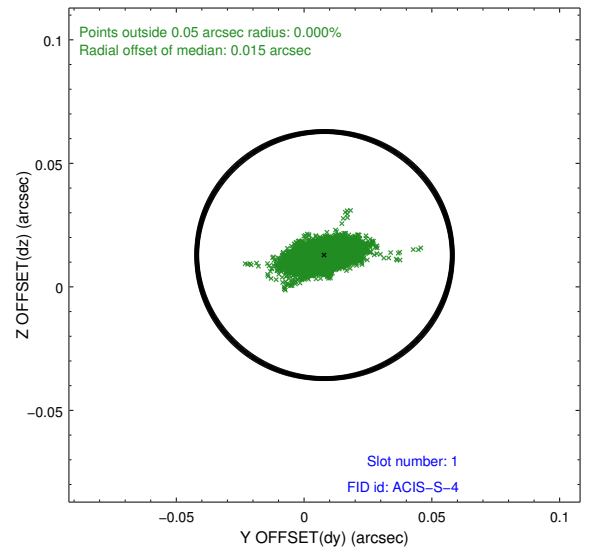
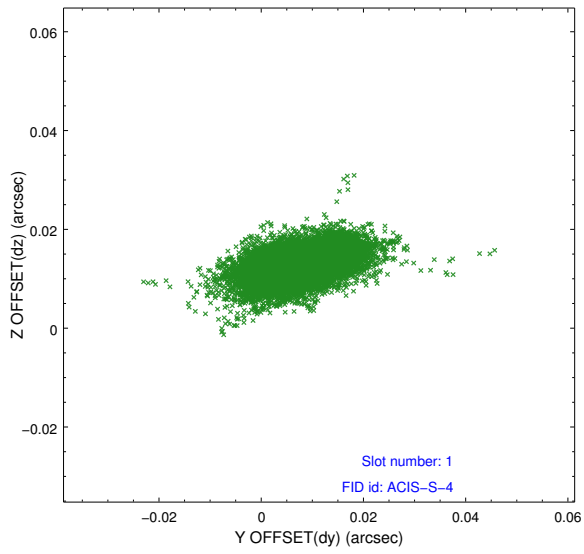


2.5 FID Slots

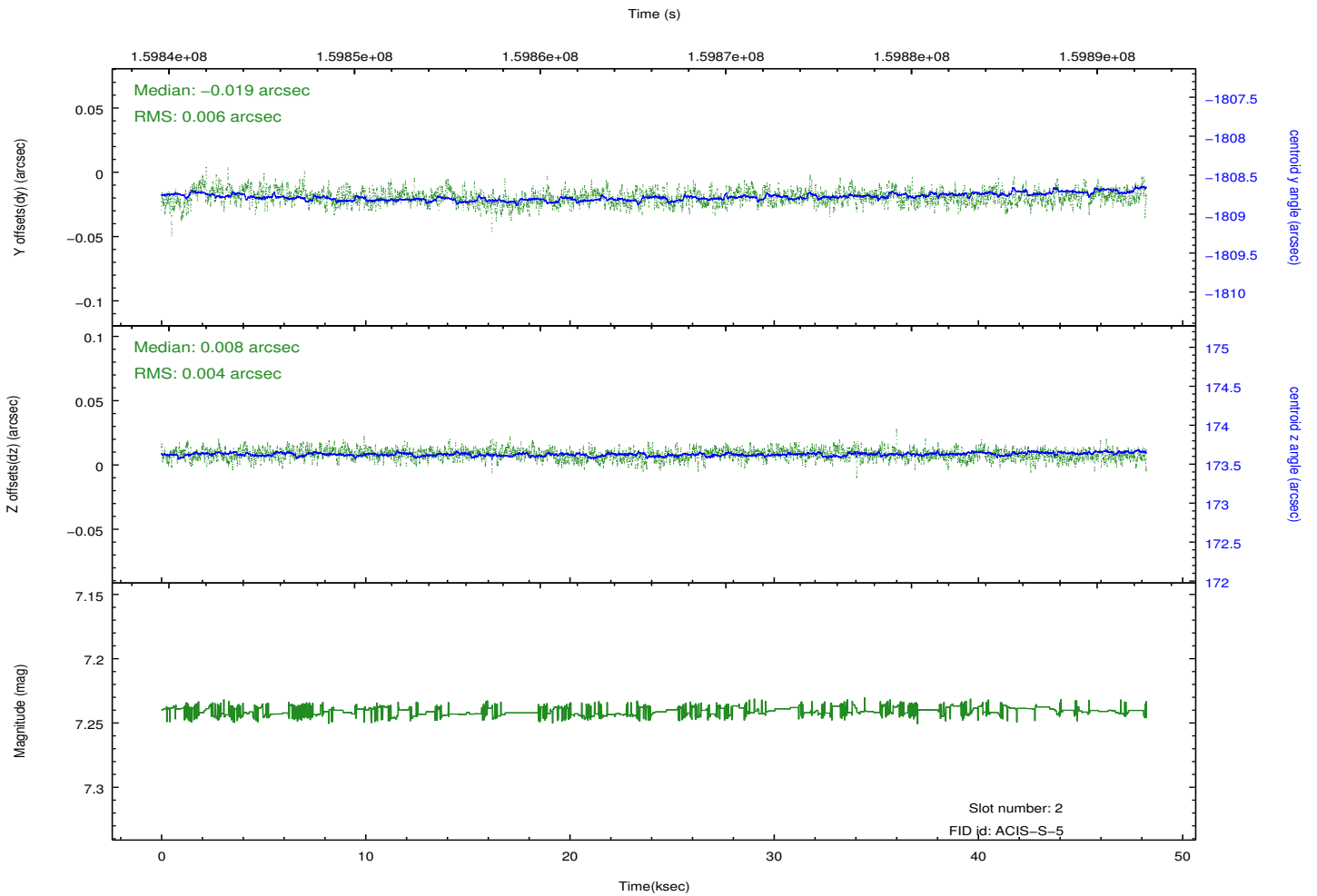
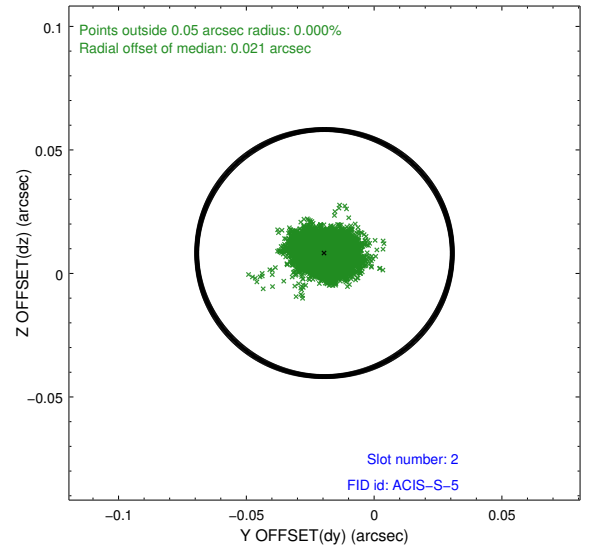
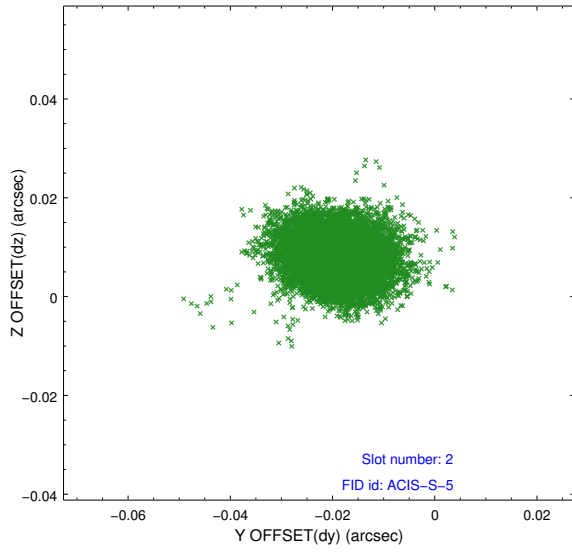
2.5.1 Slot 0



2.5.2 Slot 1



2.5.3 Slot 2



A Summary

A.1 Status

V&V Scientist	Jen Lauer
V&V Date (YYYY-MM-DD)	2012.11.01
V&V Edition	1
V&V Disposition and Status	OK
V&V Charge Time	48.228

A.2 Comments