

V&V Reference Report

L2 ASCDS Version : 8.4.5

Observation 2959 - L2 Version 3
Chandra X-Ray Center

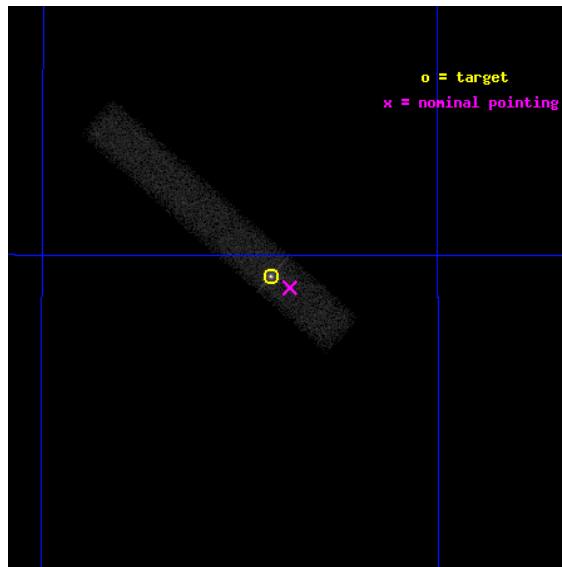
L2 Processing Date : Oct 12 2012

Contents

1	Front	2
2	OBI	3
2.1	OBI	3
2.1.1	Images	3
2.1.2	Bias	3
2.1.3	Parameters	4
2.1.4	Events	4
2.2	Compared Parameters	5
2.3	Aspect	6
2.4	Star Slots	9
2.4.1	Slot 3	9
2.4.2	Slot 4	10
2.4.3	Slot 5	11
2.4.4	Slot 6	12
2.4.5	Slot 7	13
2.5	FID Slots	14
2.5.1	Slot 0	14
2.5.2	Slot 1	15
2.5.3	Slot 2	16
A	Summary	17
A.1	Status	17
A.2	Comments	17

1 Front

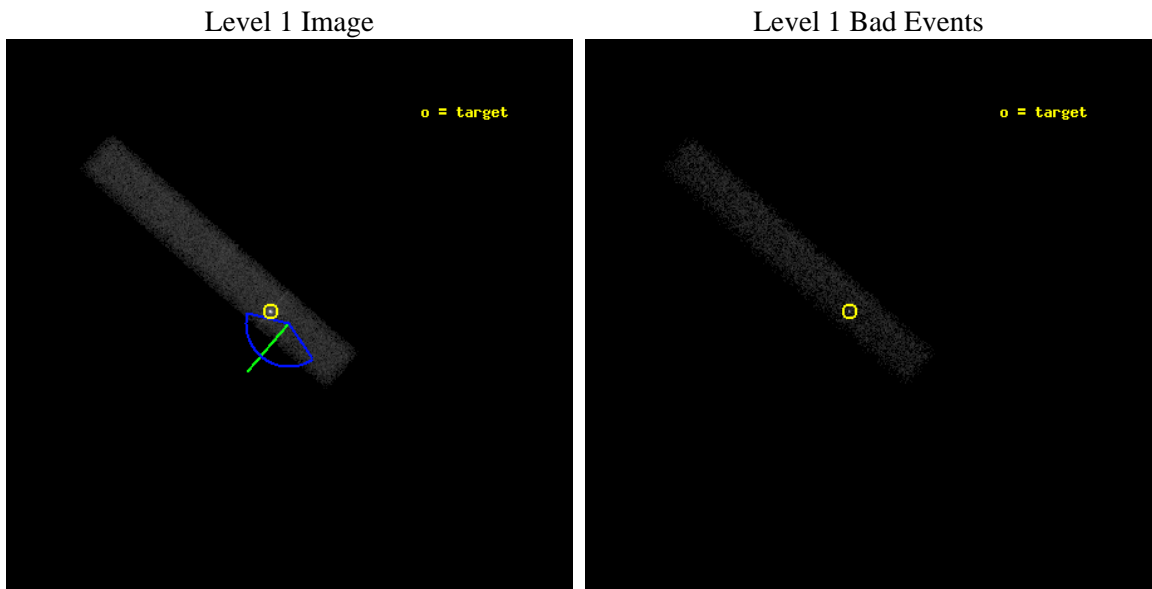
seq_num	700398	Sequence number
obs_id	2959	Observation id
title	THE PHYSICS OF X-RAY/OPTICAL JETS	Proposal title
observer	Prof. Meg Urry	Principal investigator
object	3C371.0	Source name
dtycle	0	
cycle	P	events from which exps? Prim/Second/Both
ra_targ	271.710833	Observer's specified target RA [deg]
dec_targ	69.824472	Observer's specified target Dec [deg]
ra_nom	271.68678536654	Nominal RA [deg]
dec_nom	69.819473732229	Nominal Dec [deg]
roll_nom	221.25815660203	Nominal Roll [deg]
revision	3	Processing version of data
ontime	40858.400608808	Sum of GTIs [s]
livetime	37056.412668971	Livetime [s]
ontime7	40858.400608808	Sum of GTIs [s]
l2events	42315	Number of level 2 events



2 OBI

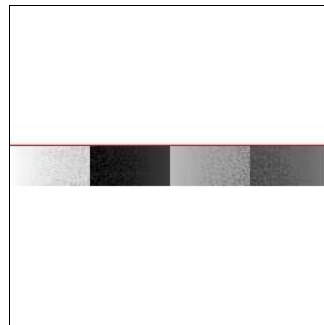
2.1 OBI

2.1.1 Images



2.1.2 Bias

Chip 7



2.1.3 Parameters

obi_num	0	Obi number	sched_exp_time	40000.000000	[s] Scheduled observation exposure time
ascdsver	8.4.5	Processing system revision	ontime	40858.400608808	Sum of GTIs [s]
caldbver	4.5.2	 	ontime7	40858.400608808	Sum of GTIs [s]
date	2012-10-11T23:32:31	Date and time of file creation	l1events	66382	Number of level 1 events
revision	3	Processing version of data			

2.1.4 Events

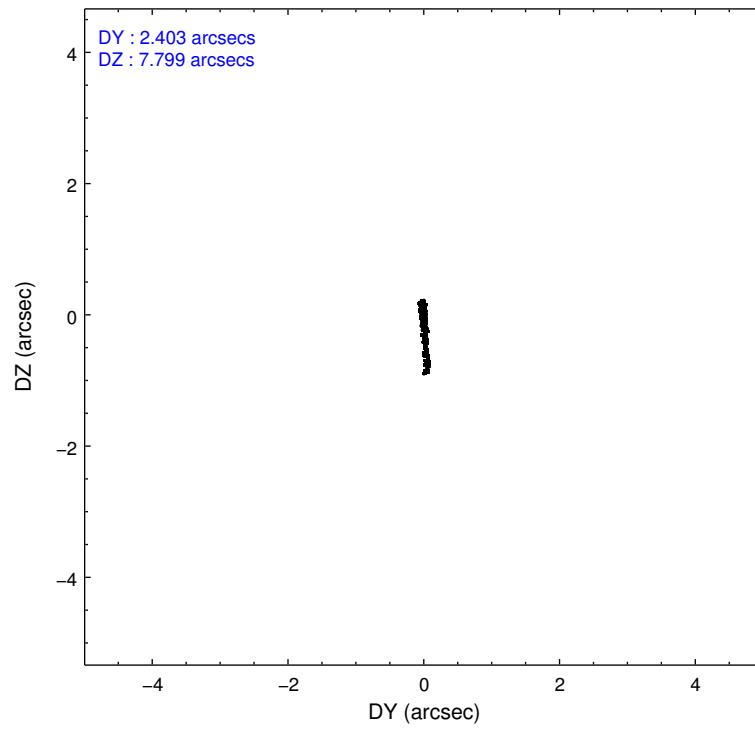
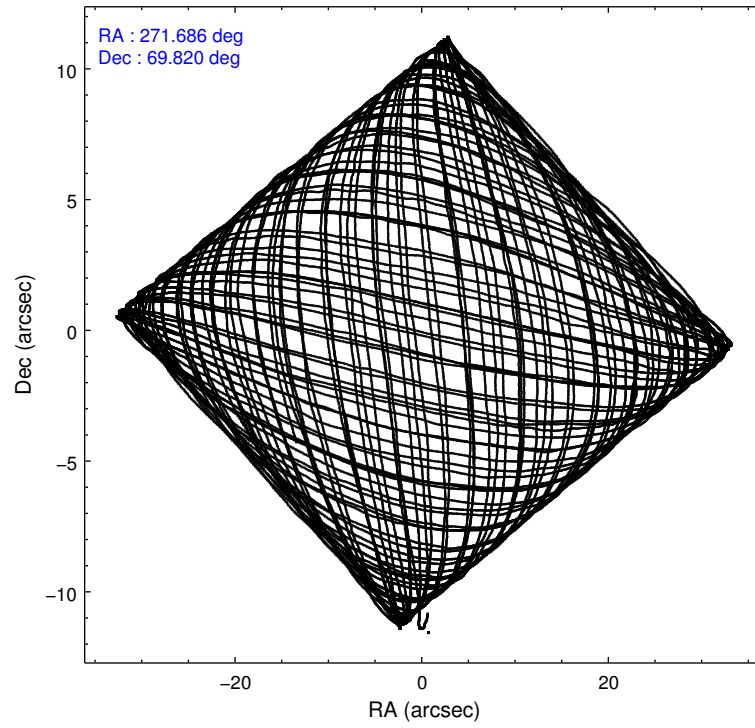
	ccd 7
level 1 events	66382
rejected events	23285
rejected %	35%

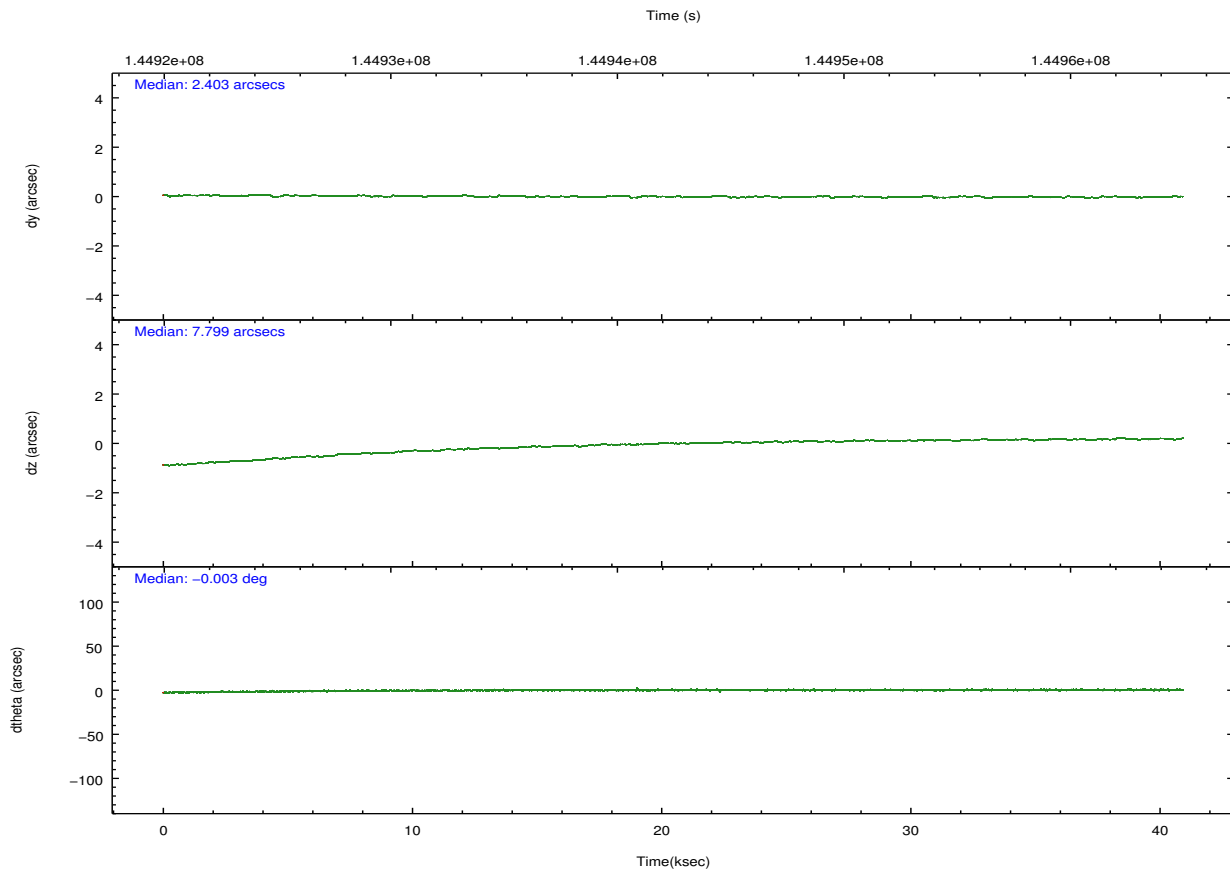
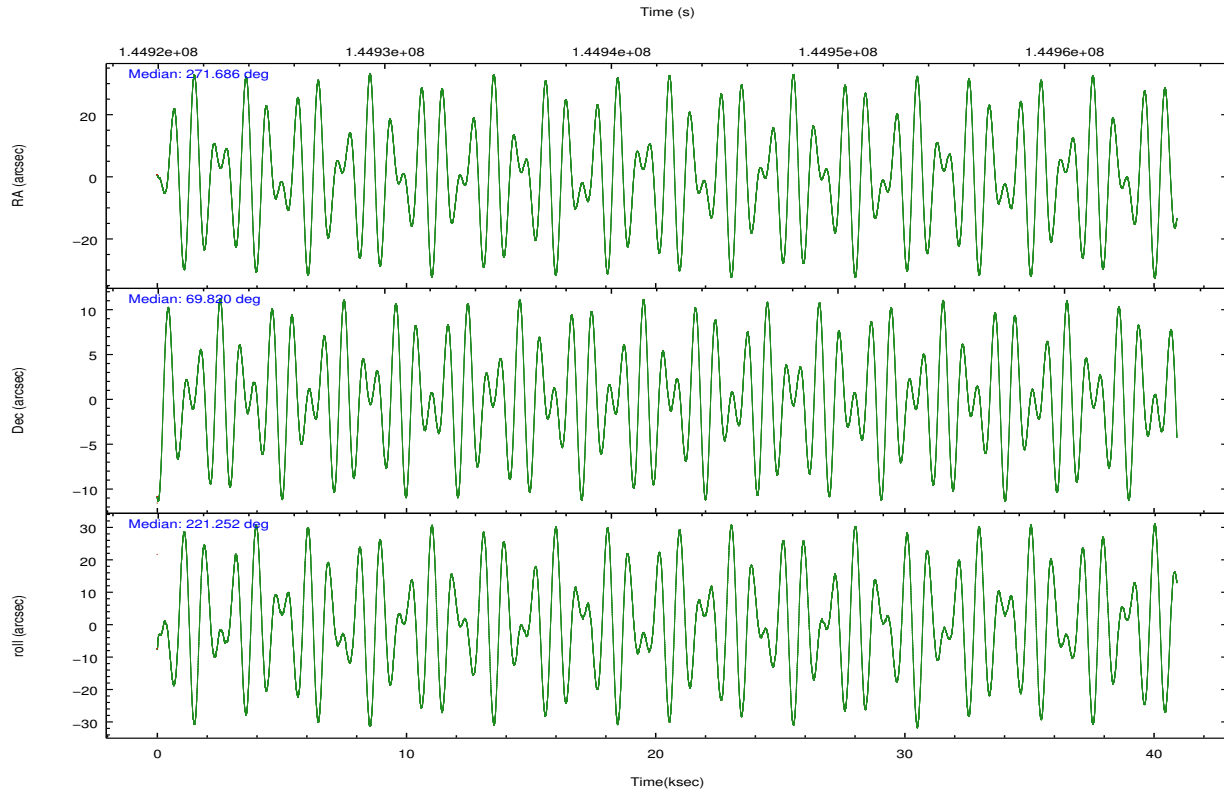
	ccd 7
grade 0 events	9382
	14%
grade 1 events	157
	0%
grade 2 events	9642
	14%
grade 3 events	5218
	7%
grade 4 events	5208
	7%
grade 5 events	4414
	6%
grade 6 events	13647
	20%
grade 7 events	18714
	28%

2.2 Compared Parameters

Parameter	Planned	Actual	Parameter	Planned	Actual
Instrument	ACIS	ACIS	Obspar format version number	7	7
Detector	ACIS-7	ACIS-7	Obspar file type	PREDICTED	ACTUAL
Grating	NONE	NONE	Obspar update status	NONE	UPDATED
Data mode	FAINT	FAINT	Number of optional ACIS chips dropped	0	0
Observation mode	POINTING	POINTING	On-chip summing requested	N	N
[deg] Pointing RA	271.711211	271.686785366539	Subarray requested	CUSTOM	1/8
[deg] Pointing Dec	69.845356	69.81947373222866	Subarray start row	449	449
[deg] Pointing Roll	221.078595	221.2581566020336	Subarray row count	128	128
[deg] Roll angle	215.000000	215.000000	Alternating exposures requested	N	N
[deg] Roll tolerance	69.000000	69.000000	[s] Primary exposure time	0.000000	0.4
Roll constraint allows 180D rotation	N	N			
[mm] SIM focus pos	-0.684267	-0.6828225247311905			
[mm] SIM defocus	0	0.001444936568705701			
[mm] SIM translation stage pos	-190.132523	-190.1400660498719			
[mm] SIM translation stage offset	0	0.00754346686406393			
[s] Observation start time (MET)	144922917.184000	144921589.55939			
Observation start date	2002-08-05T08:20:53	2002-08-05T07:59:49			
[s] Observation end time (MET)	144962917.184000	144963660.17362			
Observation end date	2002-08-05T19:27:33	2002-08-05T19:41:00			
Read mode	TIMED	TIMED			

2.3 Aspect



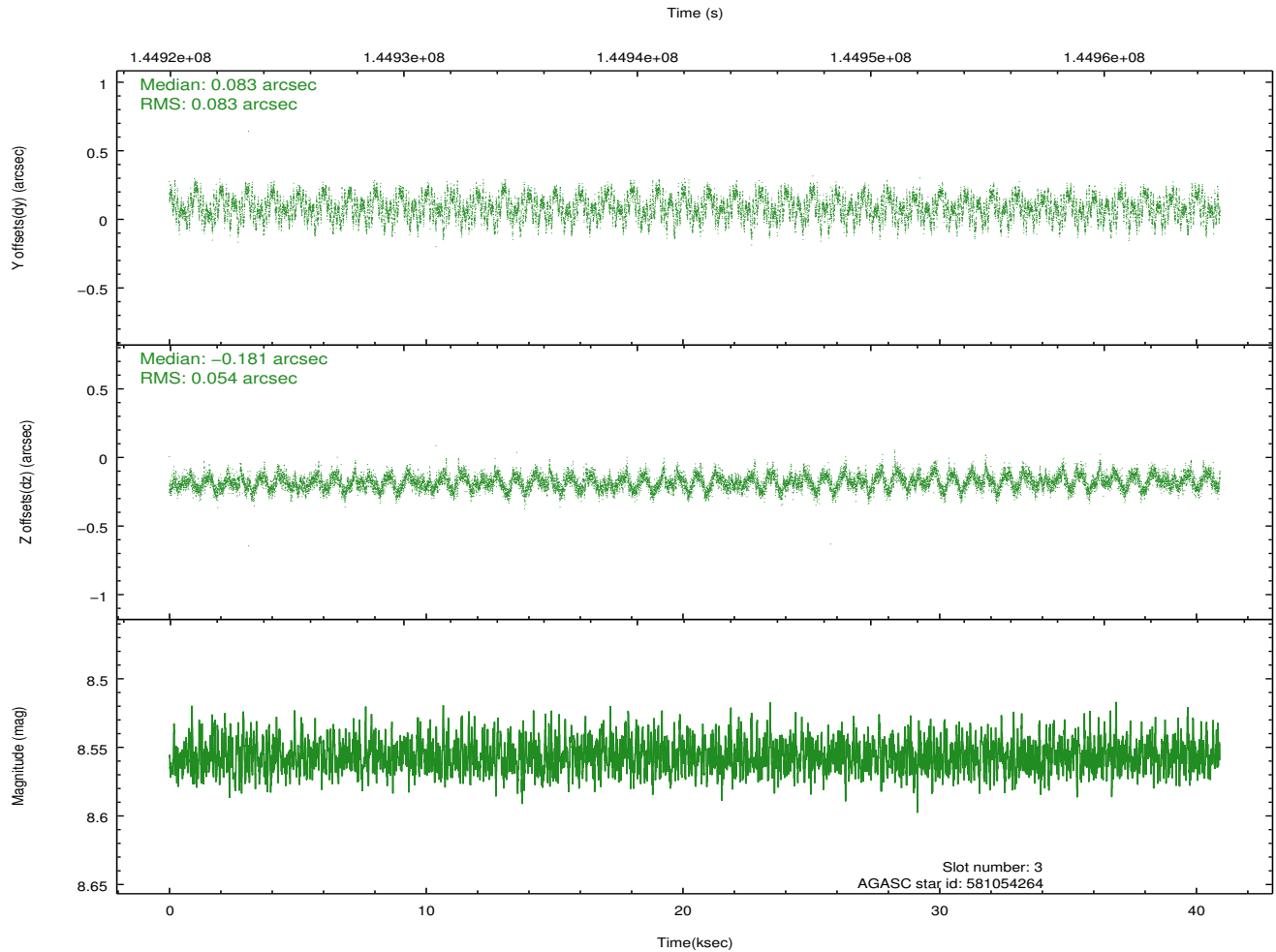
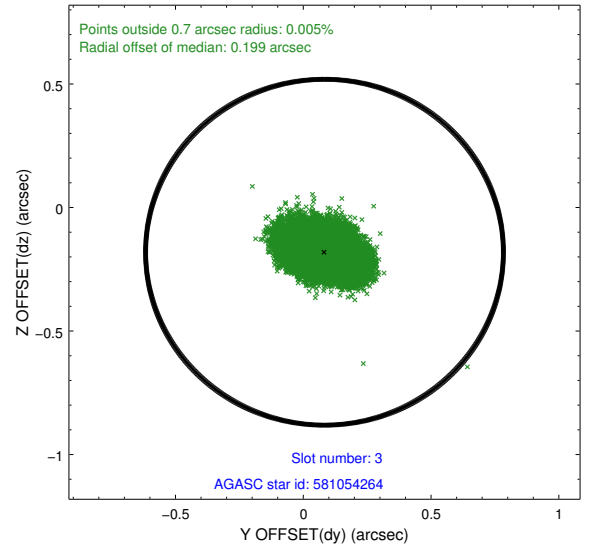
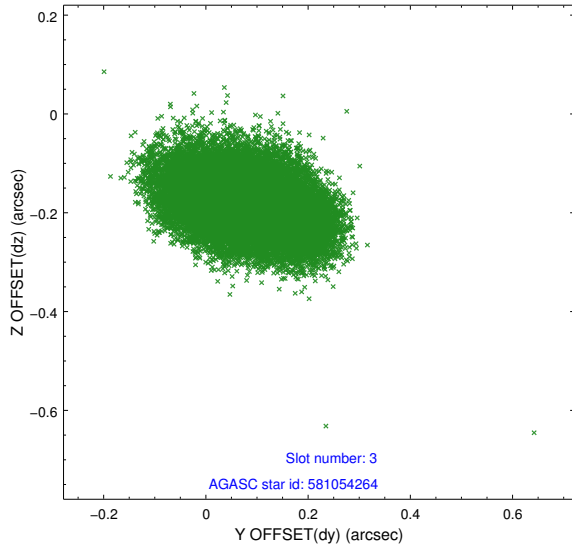


Slot Statistics

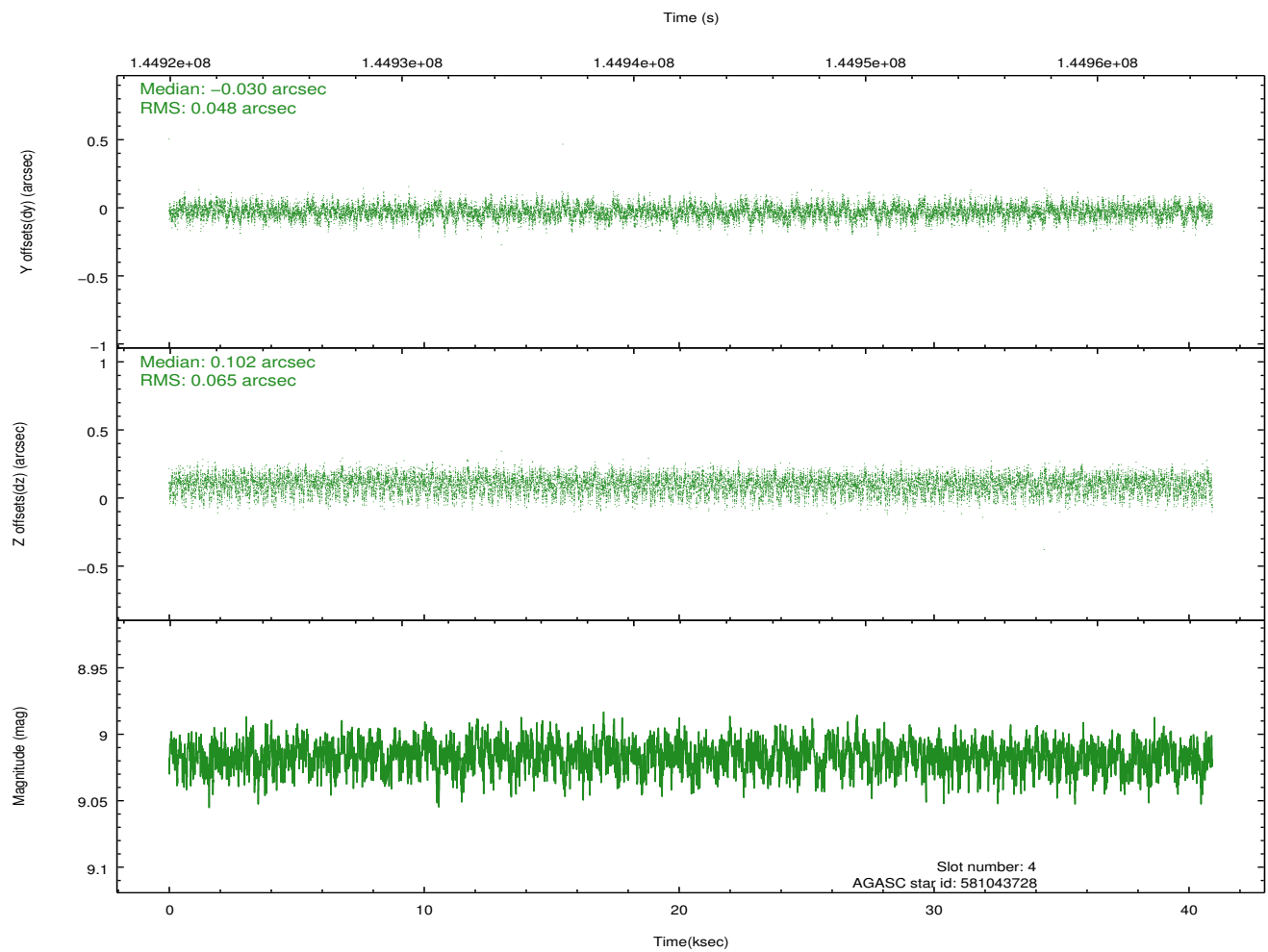
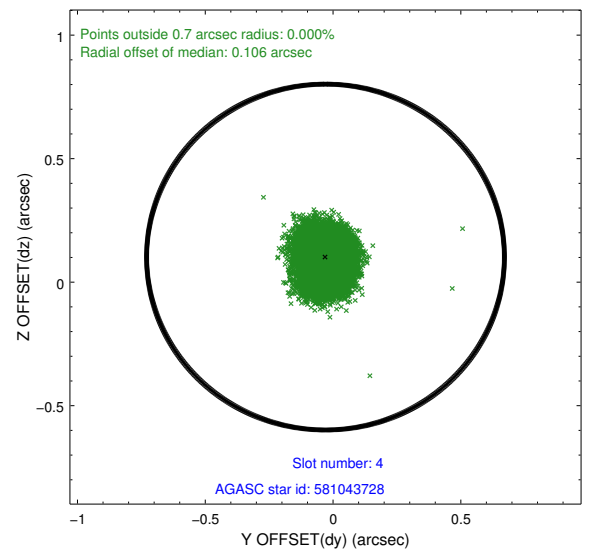
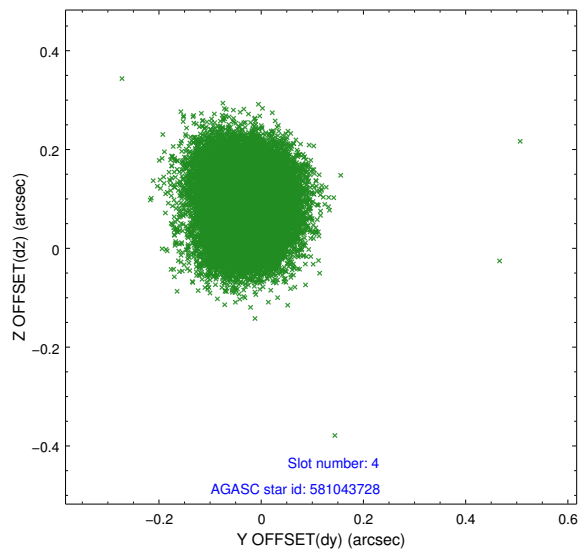
slot	status	id	mag	n_pts	med_dy	med_dz	dr1	dr2	ra	dec	mean_y	mean_z
0	FID	ACIS-S-2	7.11	9982	-0.012	0.005	0.008	0.014	0.000000	0.000000	-755.06	-1728.85
1	FID	ACIS-S-4	7.20	9982	-0.035	0.005	0.006	0.011	0.000000	0.000000	2158.21	179.60
2	FID	ACIS-S-5	7.24	9981	0.017	-0.000	0.009	0.015	0.000000	0.000000	-1807.84	173.31
3	GUIDE	581054264	8.56	19958	0.083	-0.181	0.108	0.169	274.169642	69.709637	-2032.23	2338.75
4	GUIDE	581043728	9.02	19959	-0.030	0.102	0.087	0.137	271.628136	70.656913	-1844.71	-2266.27
5	GUIDE	581046272	8.98	19955	-0.024	0.050	0.092	0.150	270.458712	70.238027	210.56	-2077.87
6	GUIDE	581049688	9.13	19949	0.003	0.031	0.077	0.125	270.210496	70.112394	739.37	-1947.96
7	GUIDE	580532760	9.02	19955	-0.034	0.005	0.076	0.122	271.207670	69.013167	2456.50	1831.19

2.4 Star Slots

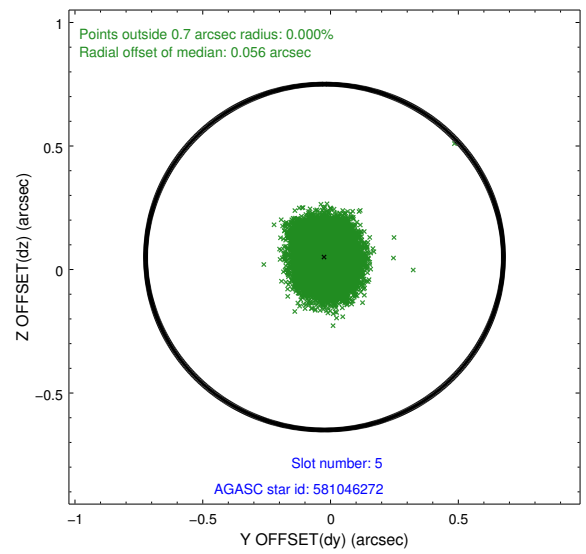
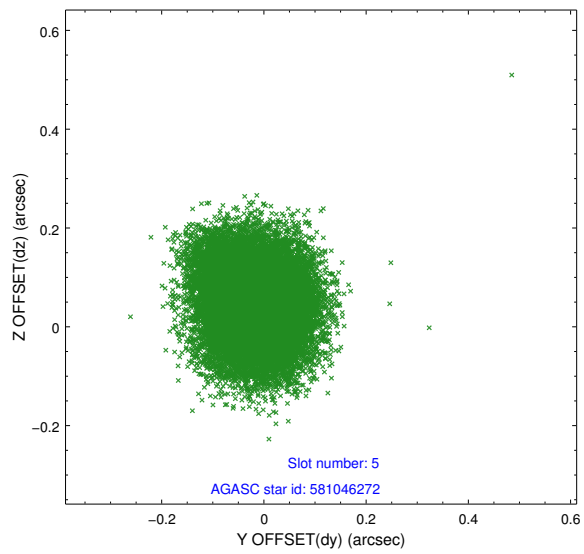
2.4.1 Slot 3



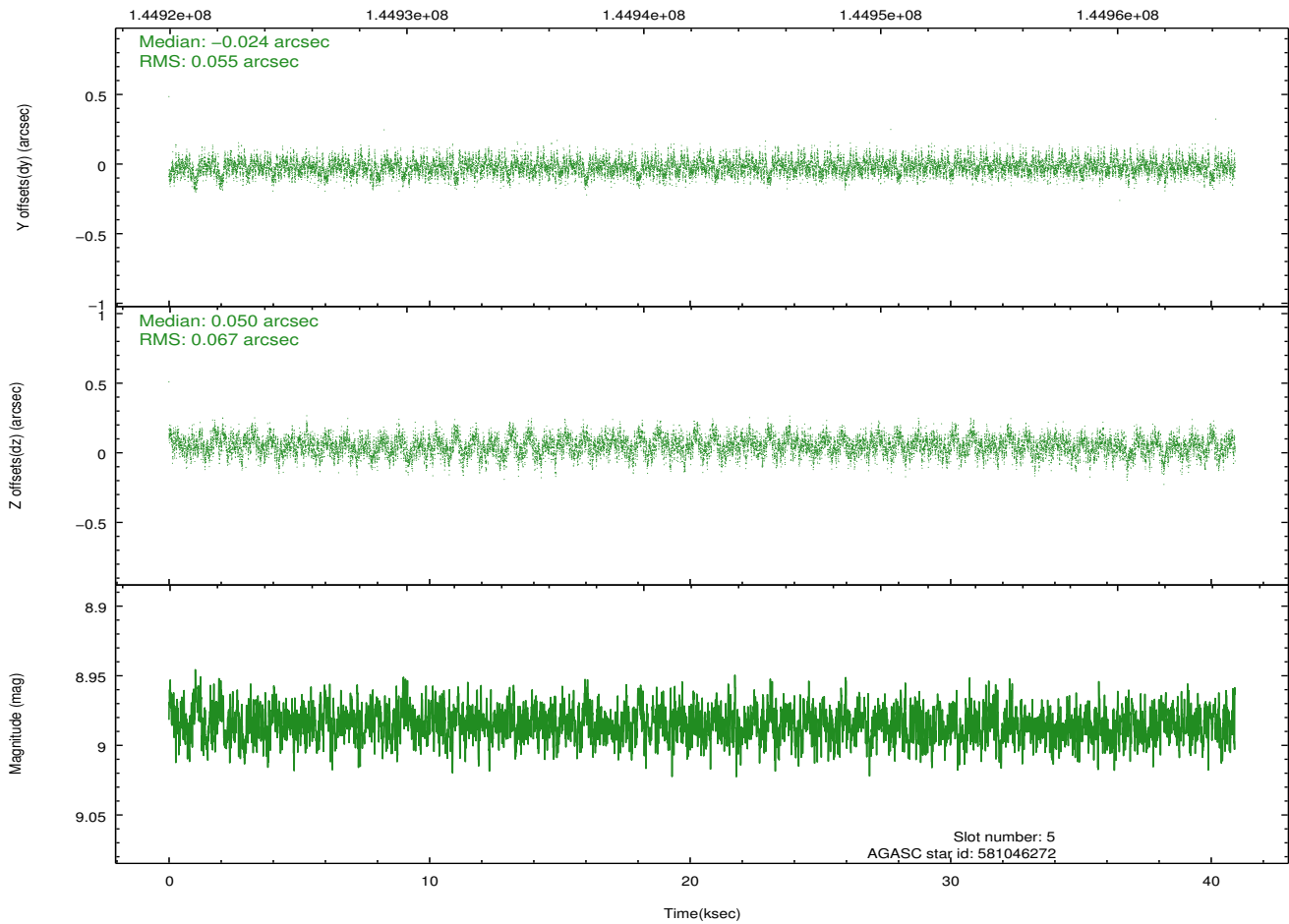
2.4.2 Slot 4



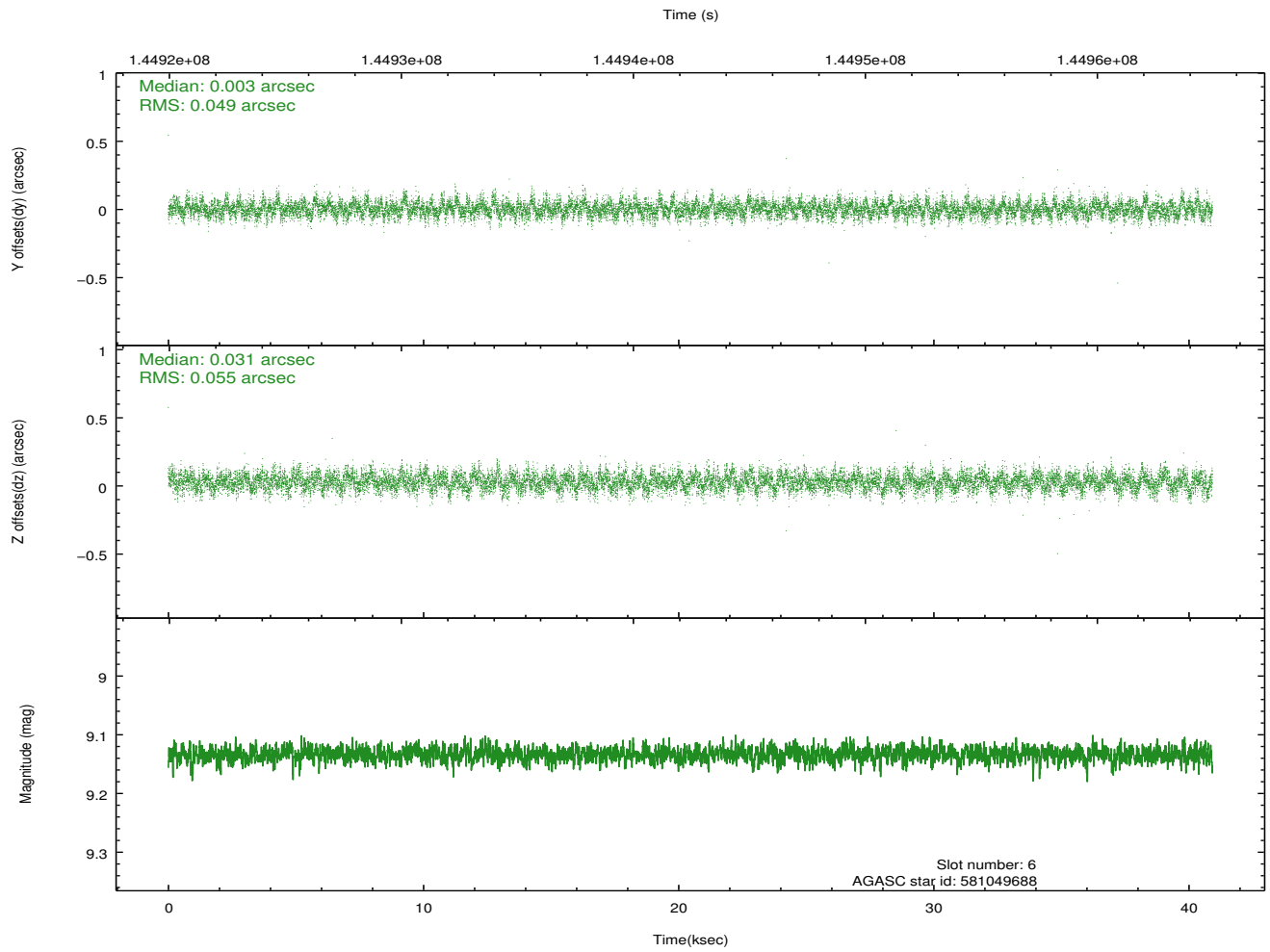
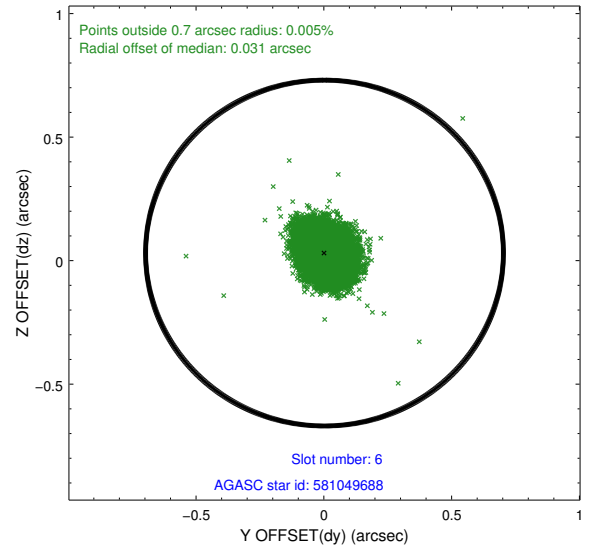
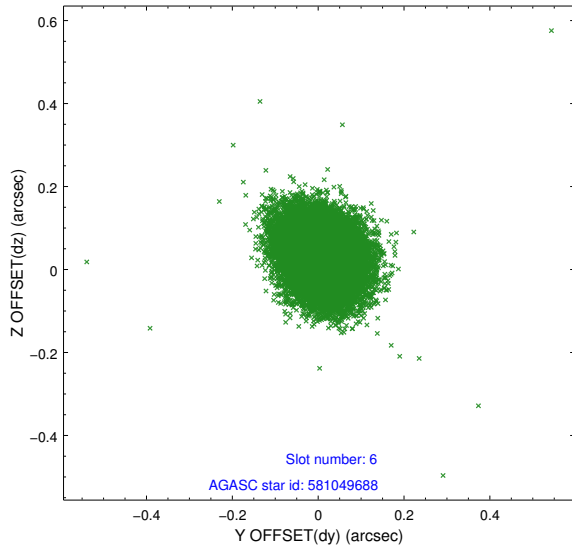
2.4.3 Slot 5



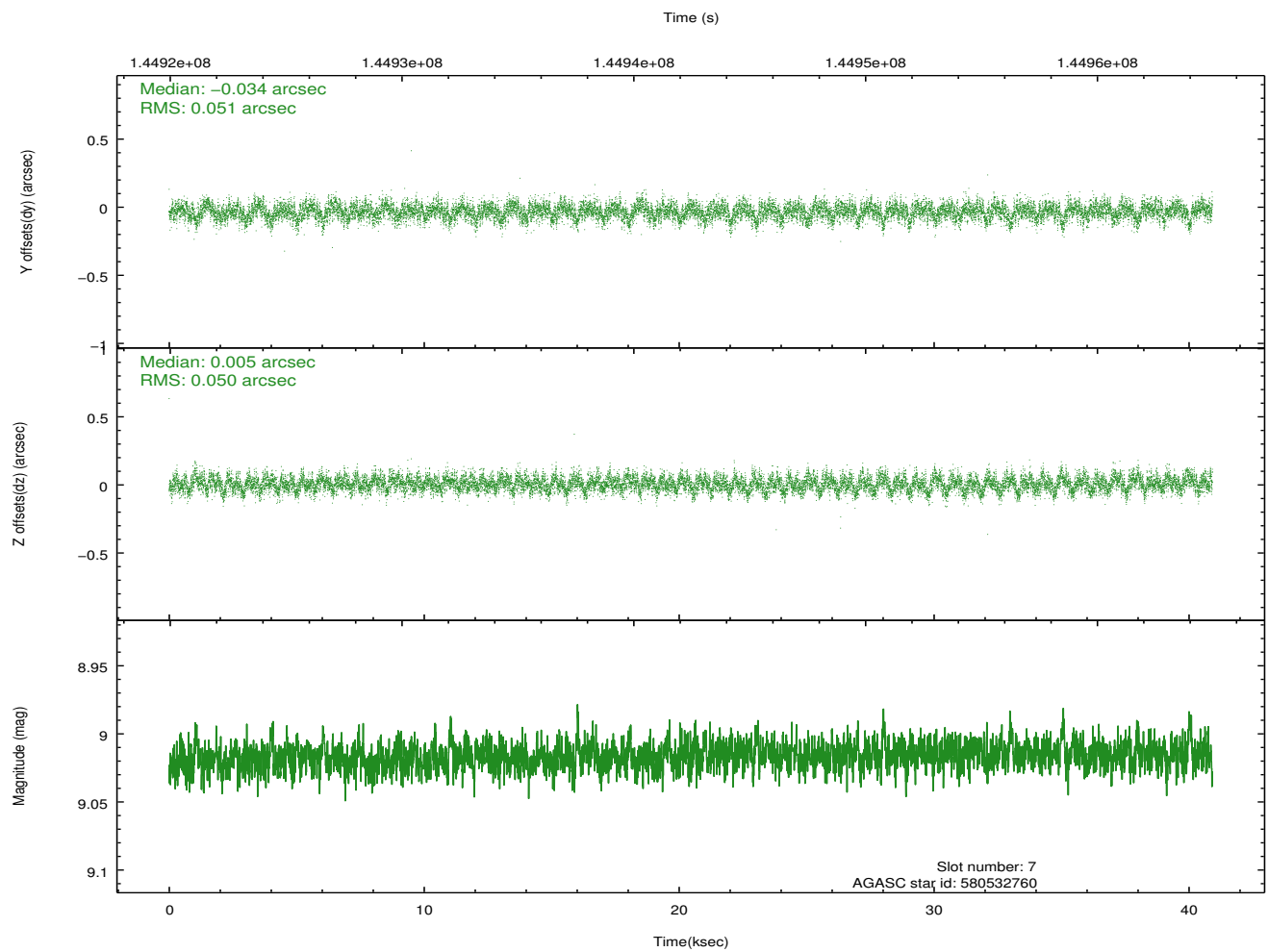
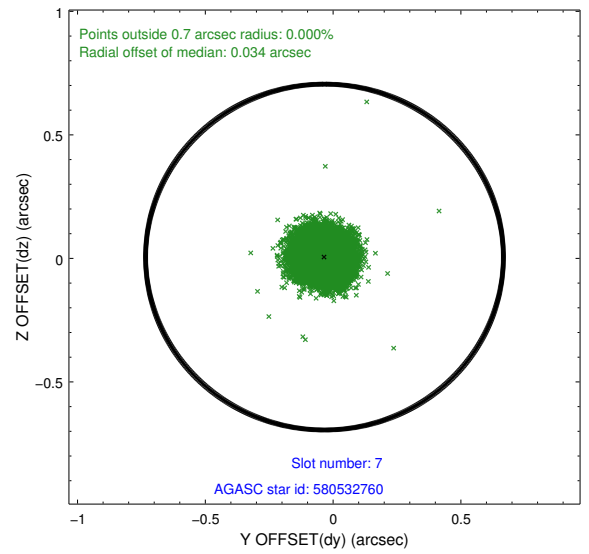
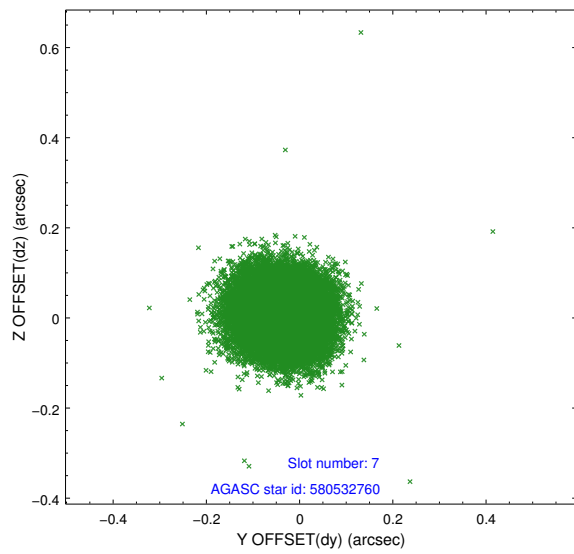
Time (s)



2.4.4 Slot 6

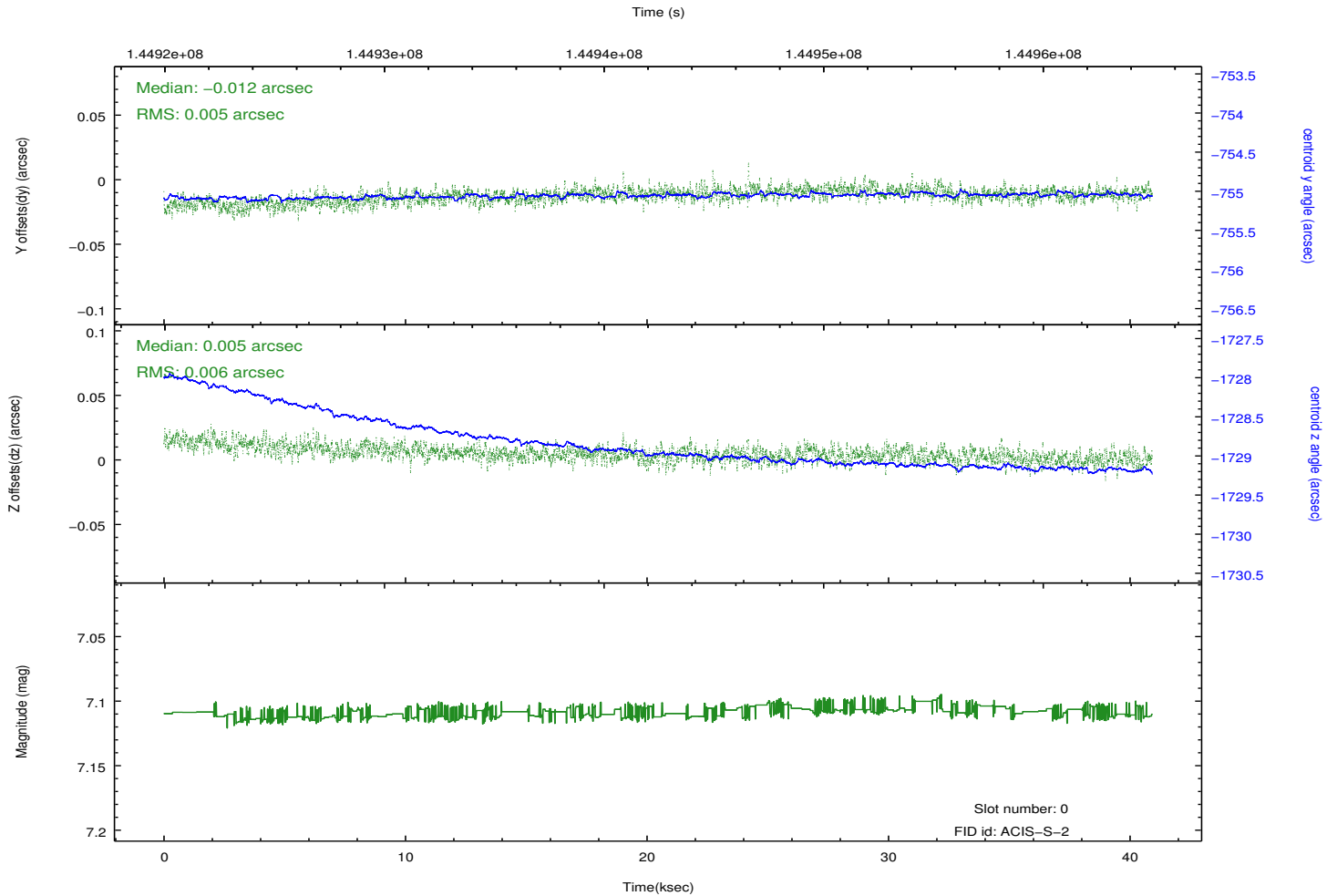
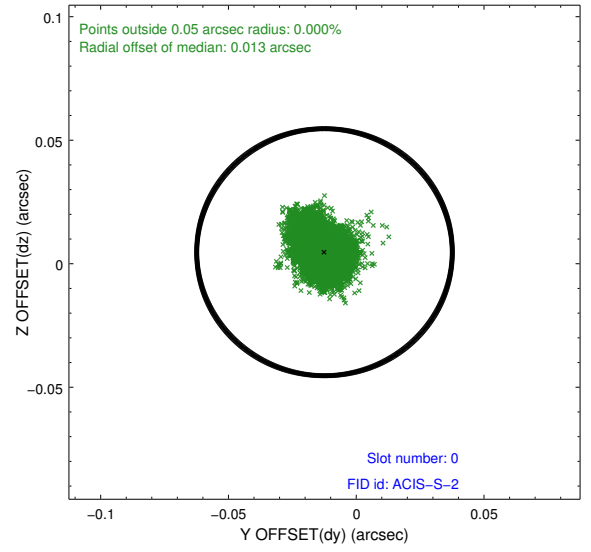
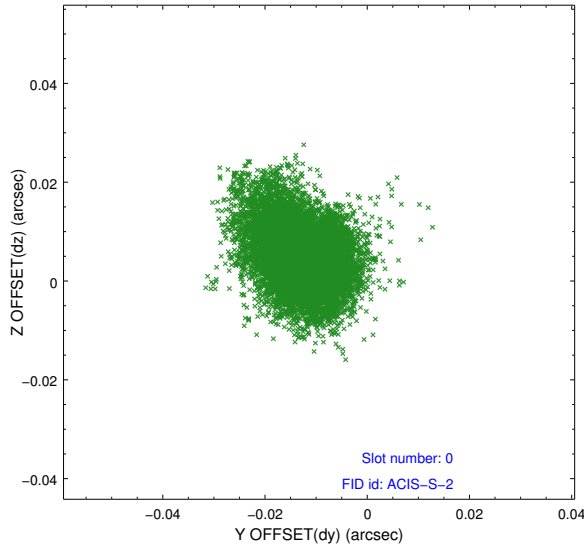


2.4.5 Slot 7

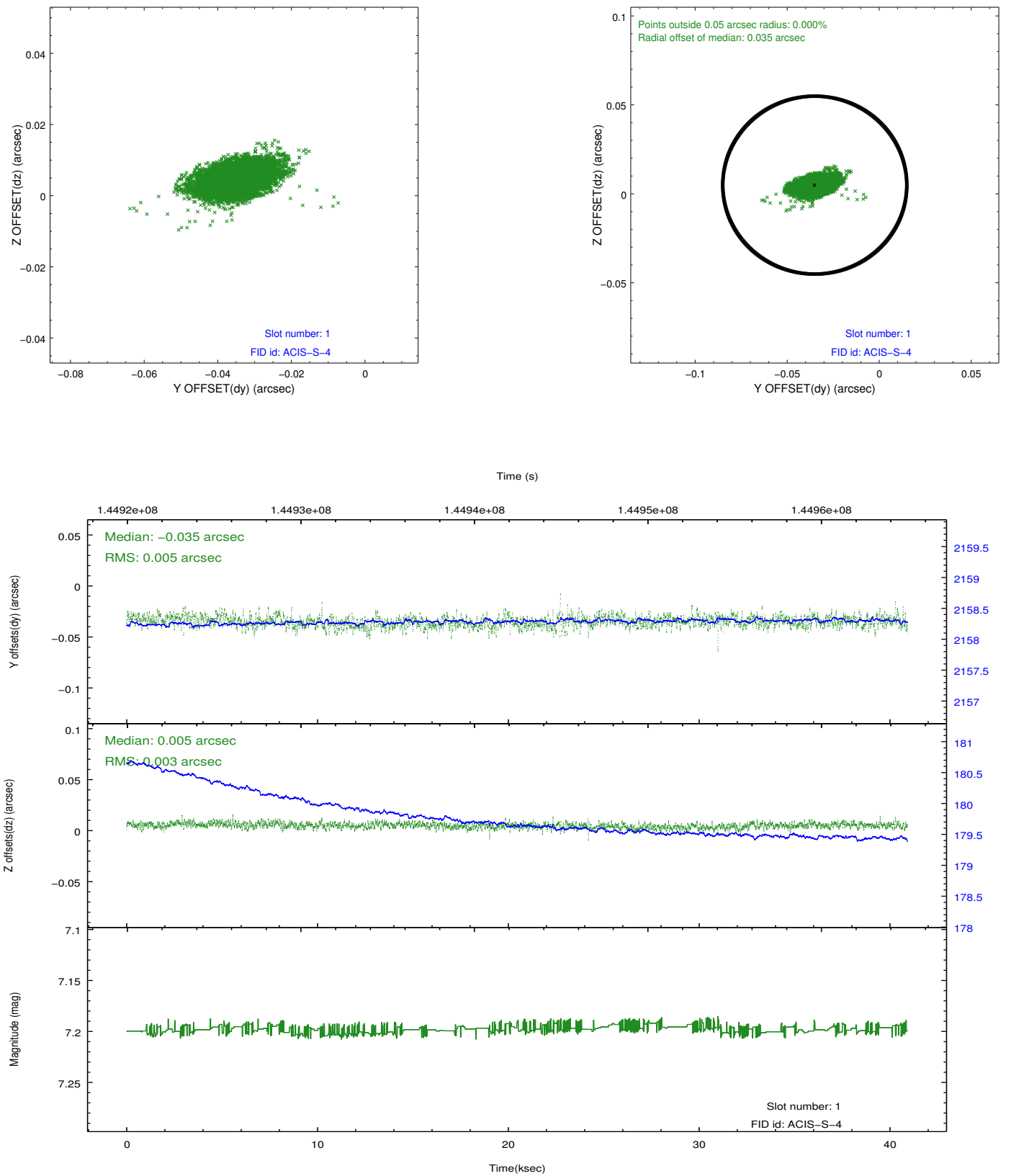


2.5 FID Slots

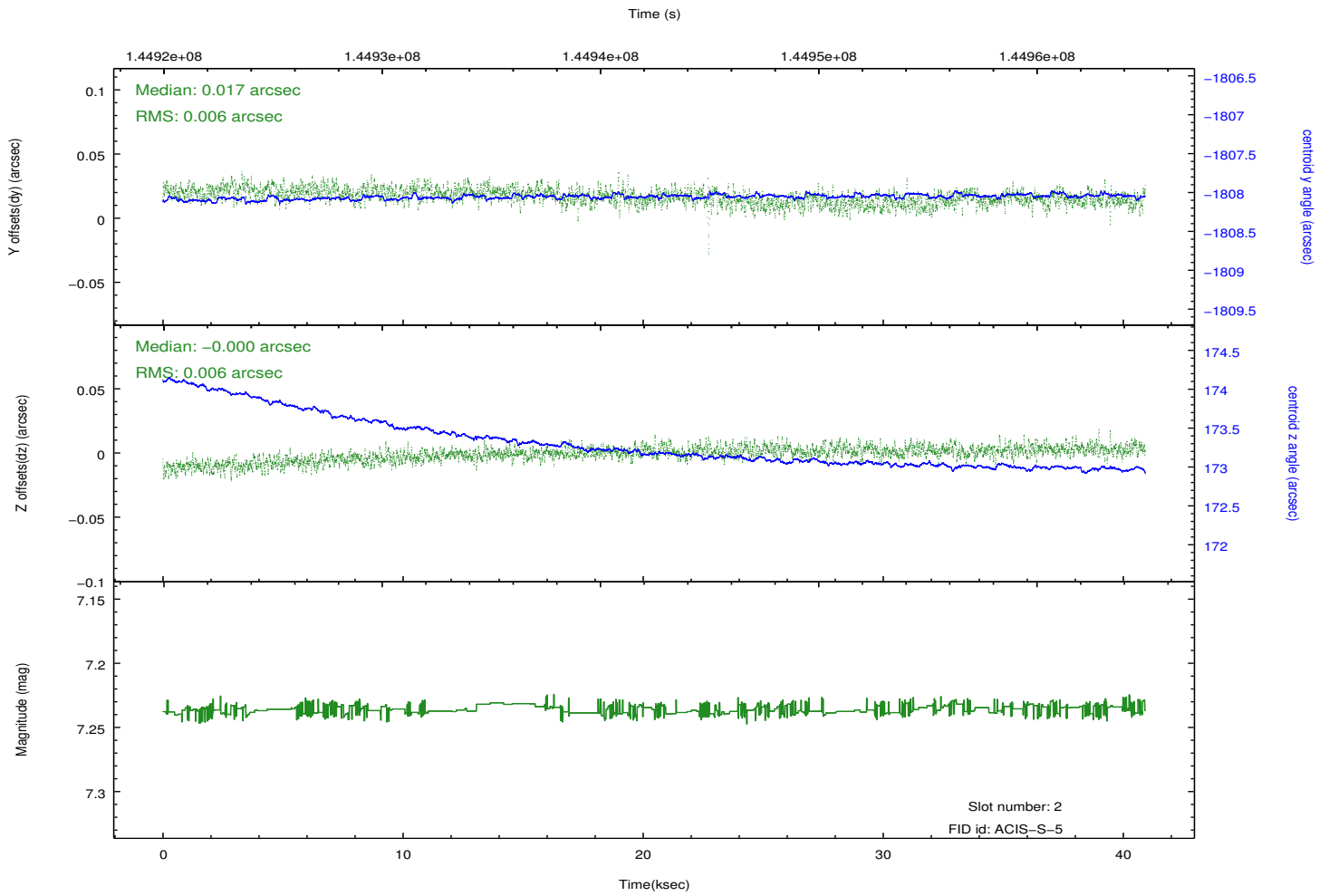
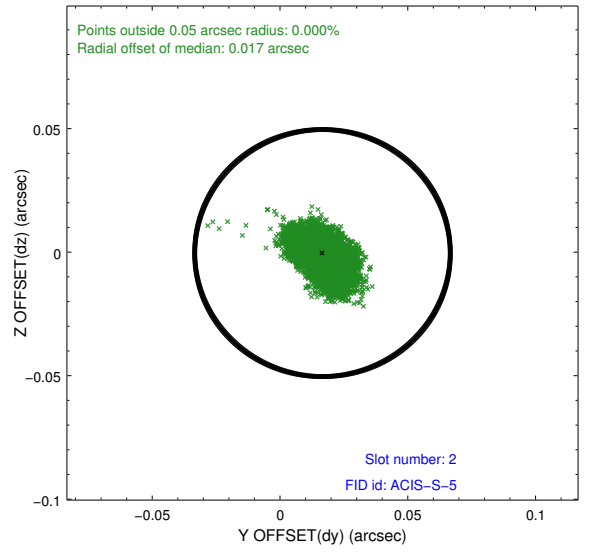
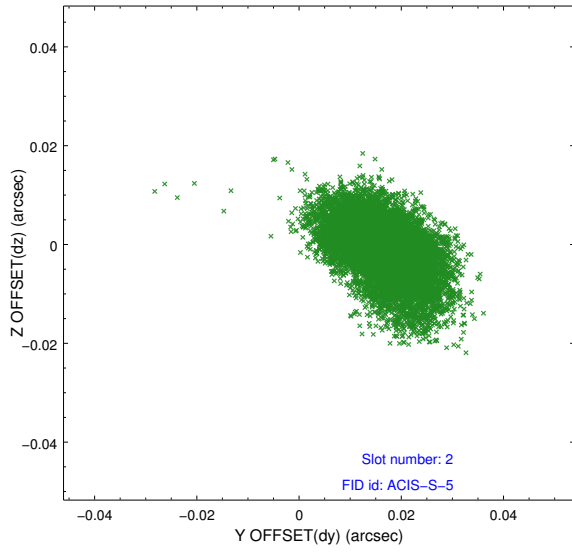
2.5.1 Slot 0



2.5.2 Slot 1



2.5.3 Slot 2



A Summary

A.1 Status

V&V Scientist	Beth Sundheim
V&V Date (YYYY-MM-DD)	2012.10.22
V&V Edition	1
V&V Disposition and Status	OK
V&V Charge Time	40.858

A.2 Comments

Joint proposal with HST.

Roll preference met.