

V&V Reference Report

L2 ASCDS Version : 8.4.5

Observation 3059 - L2 Version 3
Chandra X-Ray Center

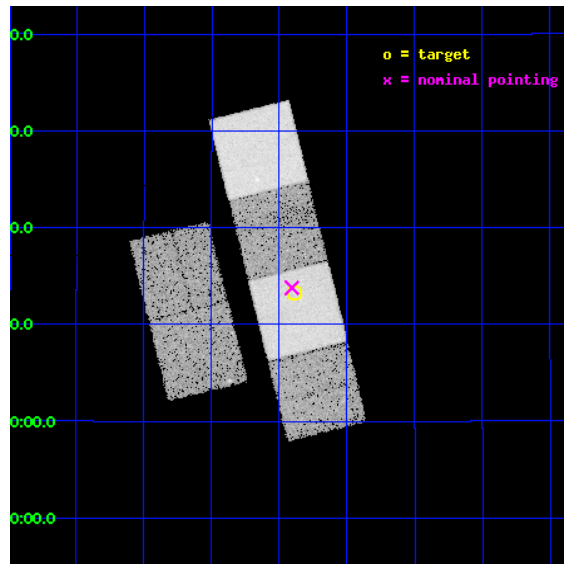
L2 Processing Date : Oct 17 2012

Contents

1	Front	2
2	OBI	3
2.1	OBI	3
2.1.1	Images	3
2.1.2	Bias	3
2.1.3	Parameters	4
2.1.4	Events	4
2.2	Compared Parameters	5
2.3	Aspect	6
2.4	Star Slots	9
2.4.1	Slot 3	9
2.4.2	Slot 4	10
2.4.3	Slot 5	11
2.4.4	Slot 6	12
2.4.5	Slot 7	13
2.5	FID Slots	14
2.5.1	Slot 0	14
2.5.2	Slot 1	15
2.5.3	Slot 2	16
A	Summary	17
A.1	Status	17
A.2	Comments	17

1 Front

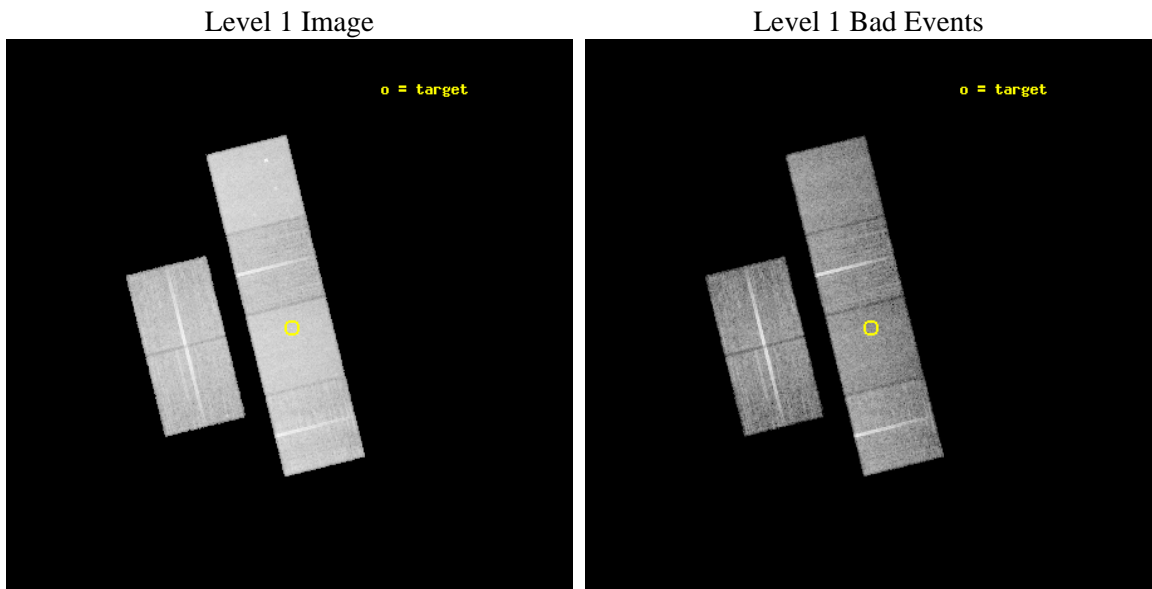
seq_num	700498	Sequence number
obs_id	3059	Observation id
title	X-RAY STUDIES OF HIGH REDSHIFT RADIO GALAXIES	Proposal title
observer	Dr. Chris Carilli	Principal investigator
object	0828+193	Source name
dtcycle	0	
cycle	P	events from which exps? Prim/Second/Both
ra_targ	127.7225	Observer's specified target RA [deg]
dec_targ	19.221	Observer's specified target Dec [deg]
ra_nom	127.72665832662	Nominal RA [deg]
dec_nom	19.229809252359	Nominal Dec [deg]
roll_nom	76.089633060564	Nominal Roll [deg]
revision	3	Processing version of data
ontime	19220.497297615	Sum of GTIs [s]
livetime	18977.115787638	Livetime [s]
ontime2	19220.497297615	Sum of GTIs [s]
ontime3	19214.015317291	Sum of GTIs [s]
ontime5	19220.497297615	Sum of GTIs [s]
ontime6	19220.497297615	Sum of GTIs [s]
ontime7	19220.497297615	Sum of GTIs [s]
ontime8	19220.497297615	Sum of GTIs [s]
l2events	192102	Number of level 2 events



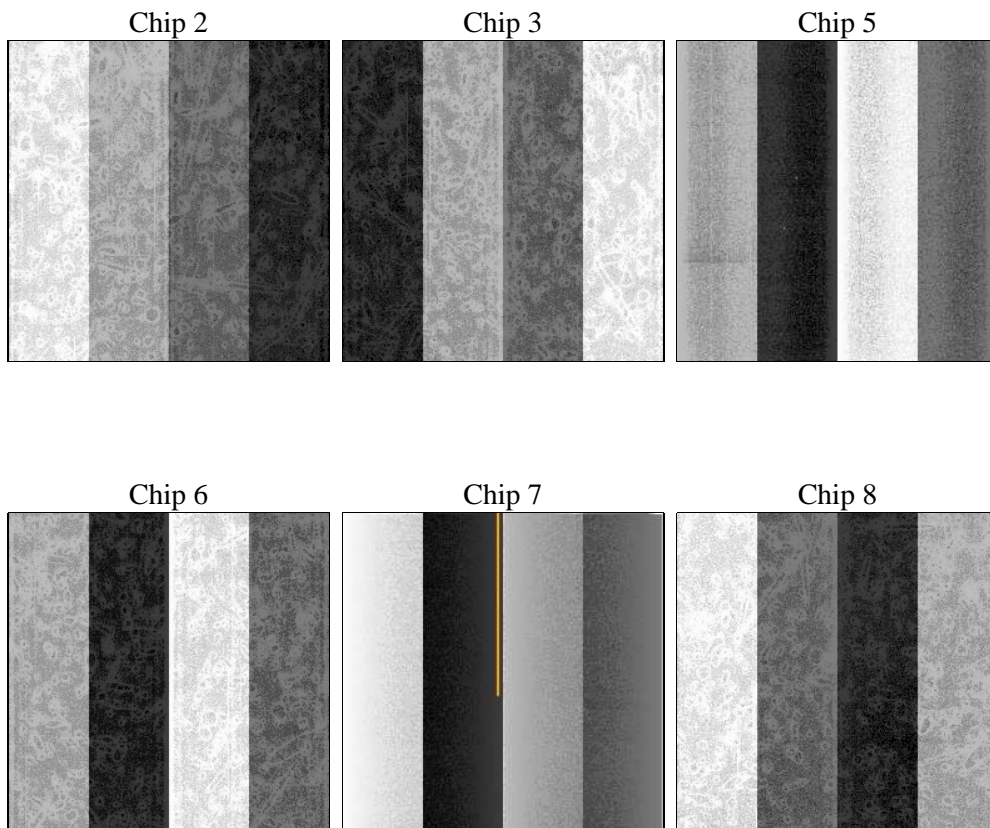
2 OBI

2.1 OBI

2.1.1 Images



2.1.2 Bias



2.1.3 Parameters

obi_num	0	Obi number	sched_exp_time	19300.000000	[s] Scheduled observation exposure time
ascdsver	8.4.5	Processing system revision	ontime	19220.497297615	Sum of GTIs [s]
caldbver	4.5.2	 	ontime2	19220.497297615	Sum of GTIs [s]
date	2012-10-17T11:12:58	Date and time of file creation	ontime3	19214.015317291	Sum of GTIs [s]
revision	3	Processing version of data	ontime5	19220.497297615	Sum of GTIs [s]
			ontime6	19220.497297615	Sum of GTIs [s]
			ontime7	19220.497297615	Sum of GTIs [s]
			ontime8	19220.497297615	Sum of GTIs [s]
			l1events	803329	Number of level 1 events

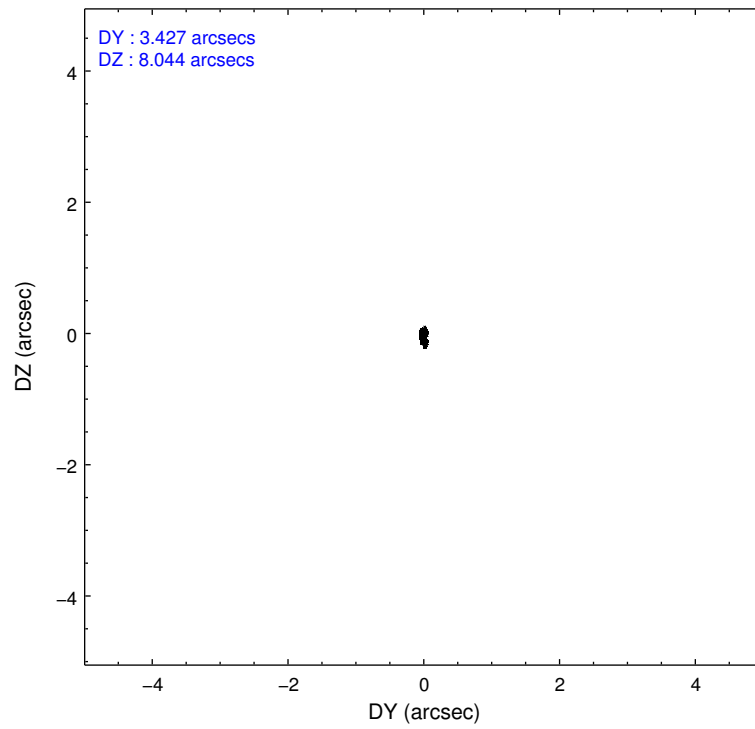
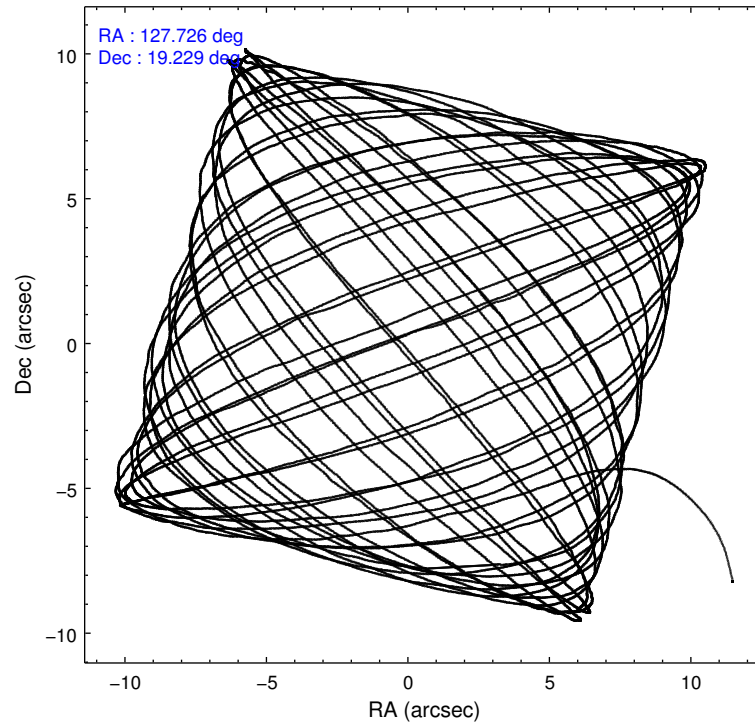
2.1.4 Events

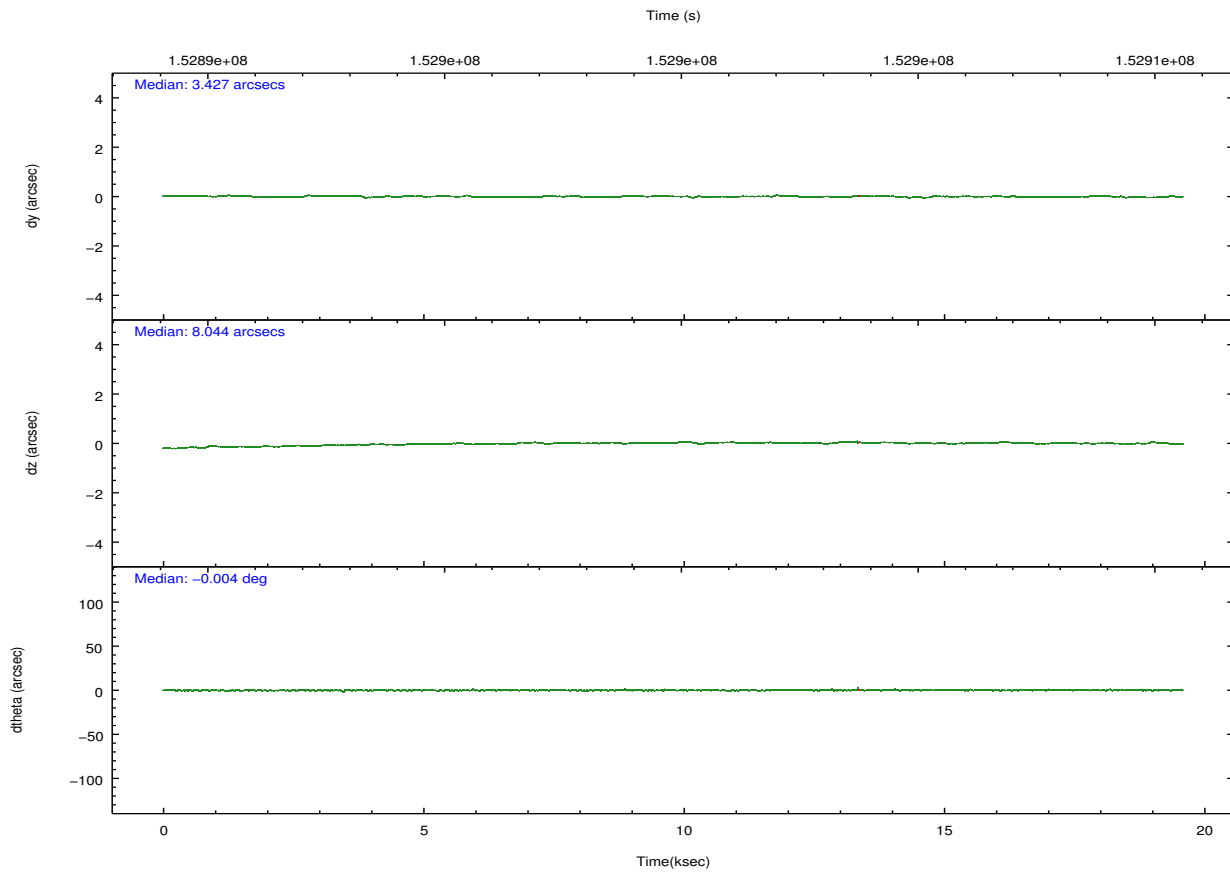
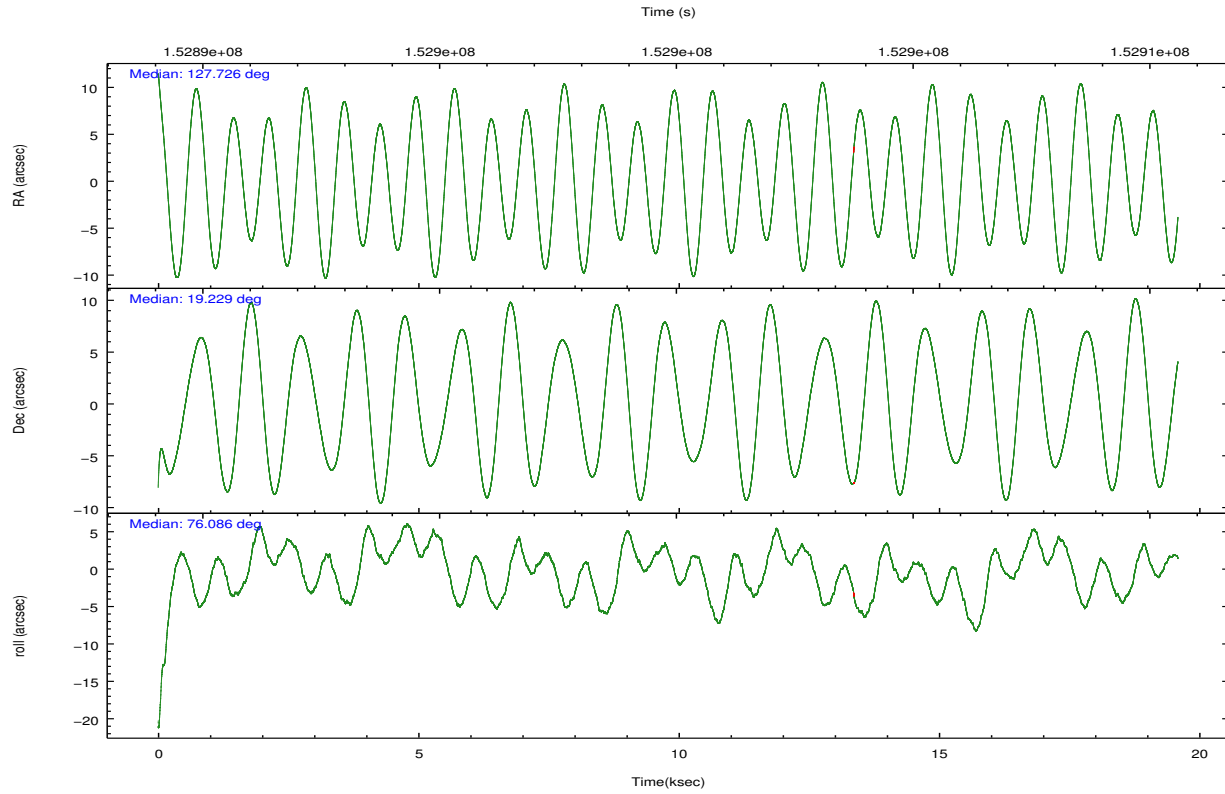
	ccd 2	ccd 3	ccd 5	ccd 6	ccd 7	ccd 8		ccd 2	ccd 3	ccd 5	ccd 6	ccd 7	ccd 8
level 1 events	113069	108903	170231	112553	156079	142494	grade 0 events	5878	5767	6921	5739	6421	9546
rejected events	99923	95736	90478	98439	88381	112780		5%	5%	4%	5%	4%	6%
rejected %	88%	87%	53%	87%	56%	79%	grade 1 events	81	61	240	55	138	108
								0%	0%	0%	0%	0%	0%
							grade 2 events	2504	2477	23406	2922	13025	6328
								2%	2%	13%	2%	8%	4%
							grade 3 events	1319	1324	3447	1376	5911	3218
								1%	1%	2%	1%	3%	2%
							grade 4 events	1285	1311	3444	1356	5906	2895
								1%	1%	2%	1%	3%	2%
							grade 5 events	4392	4697	12138	4990	14188	6622
								3%	4%	7%	4%	9%	4%
							grade 6 events	2165	2299	42583	2725	36467	7768
								1%	2%	25%	2%	23%	5%
							grade 7 events	95445	90967	78052	93390	74023	106009
								84%	83%	45%	82%	47%	74%

2.2 Compared Parameters

Parameter	Planned	Actual	Parameter	Planned	Actual
Instrument	ACIS	ACIS	Obspar format version number	7	7
Detector	ACIS-235678	ACIS-235678	Obspar file type	PREDICTED	ACTUAL
Grating	NONE	NONE	Obspar update status	NONE	UPDATED
Data mode	FAINT	FAINT	Number of optional ACIS chips dropped	0	0
Observation mode	POINTING	POINTING	On-chip summing requested	N	N
[deg] Pointing RA	127.735033	127.7266583266179	Subarray requested	NONE	NONE
[deg] Pointing Dec	19.203769	19.22980925235867	Alternating exposures requested	N	N
[deg] Pointing Roll	75.930253	76.08963306056413	[s] Primary exposure time	0.000000	3.2
[mm] SIM focus pos	-0.684267	-0.6828225247311905			
[mm] SIM defocus	0	0.001444936568705701			
[mm] SIM translation stage pos	-190.132523	-190.1400660498719			
[mm] SIM translation stage offset	0	0.00754346686406393			
[s] Observation start time (MET)	152890311.184000	152889291.57647			
Observation start date	2002-11-05T13:30:47	2002-11-05T13:14:51			
[s] Observation end time (MET)	152909611.184000	152910271.27735			
Observation end date	2002-11-05T18:52:27	2002-11-05T19:04:31			
Read mode	TIMED	TIMED			

2.3 Aspect



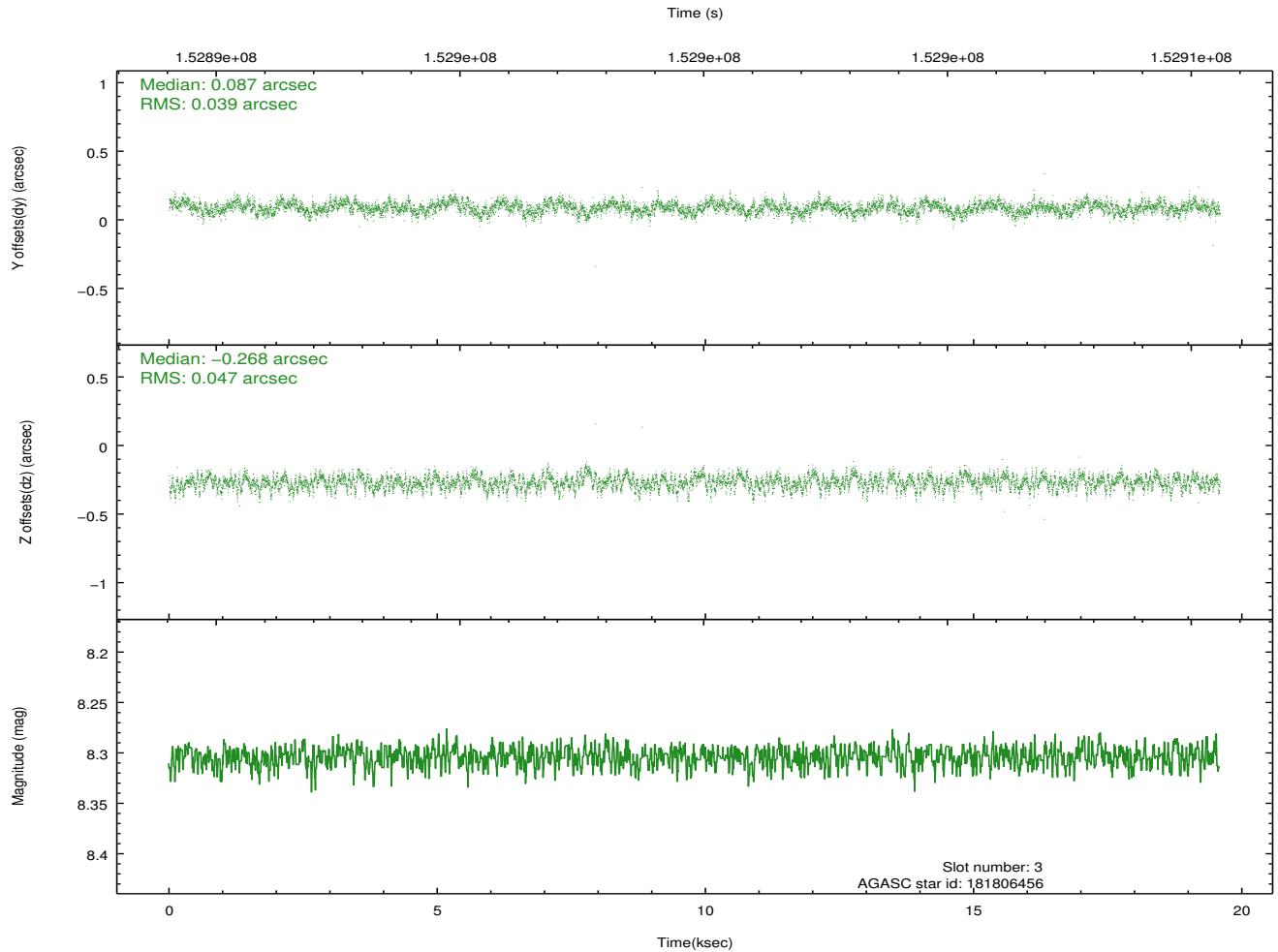
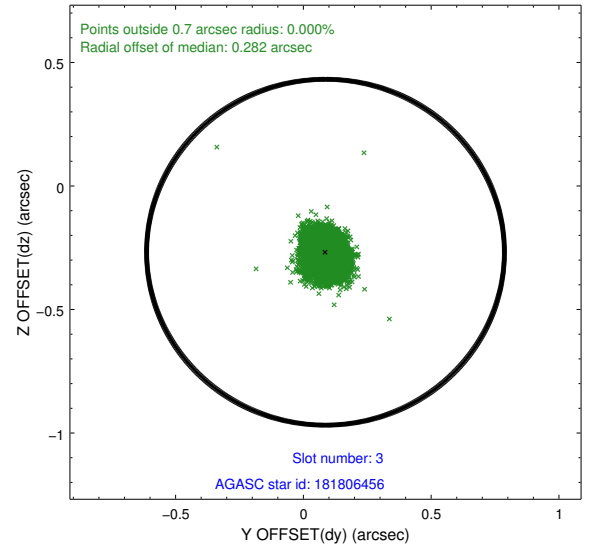
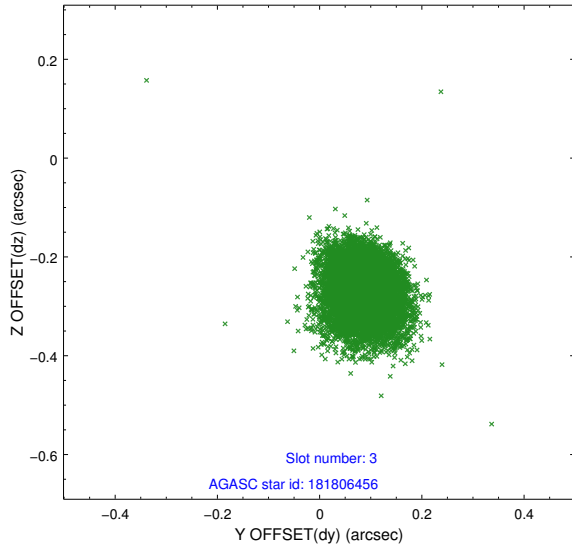


Slot Statistics

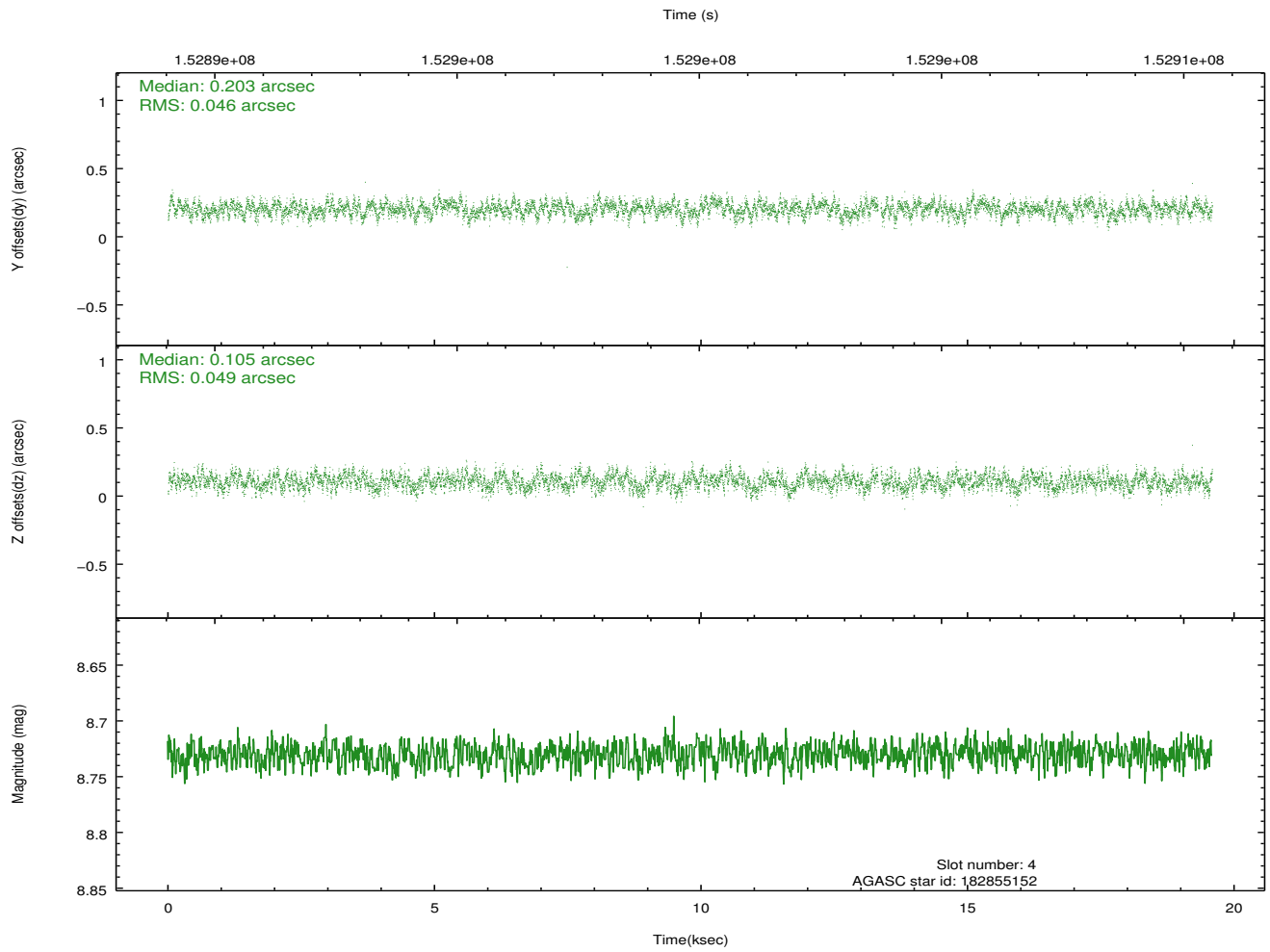
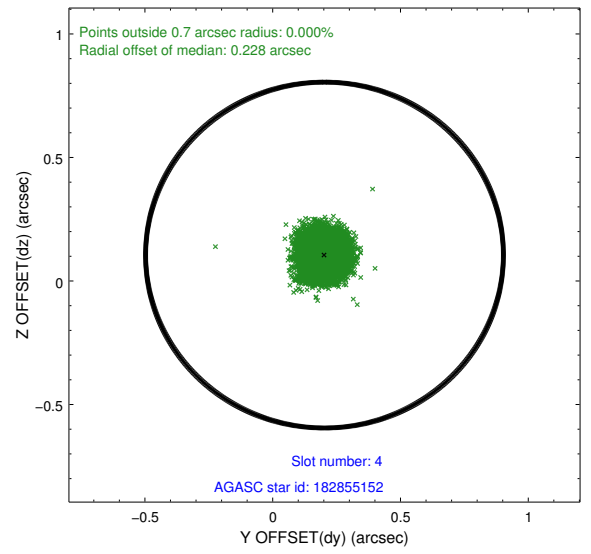
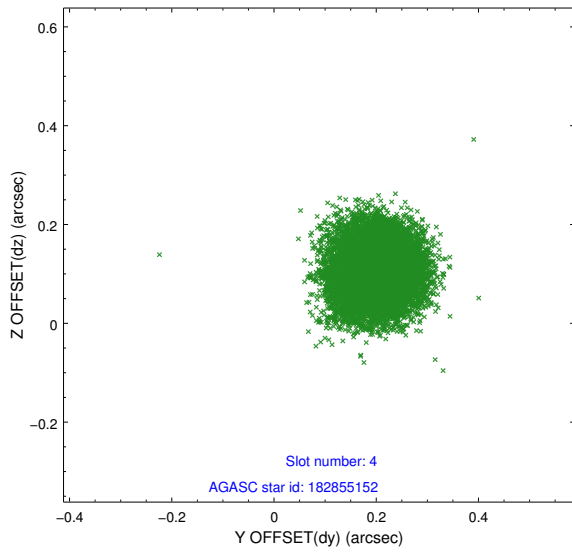
slot	status	id	mag	n_pts	med_dy	med_dz	dr1	dr2	ra	dec	mean_y	mean_z
0	FID	ACIS-S-1	7.19	4768	0.038	0.004	0.007	0.012	0.000000	0.000000	939.95	-1724.86
1	FID	ACIS-S-4	7.20	4767	-0.027	-0.017	0.006	0.011	0.000000	0.000000	2157.44	179.05
2	FID	ACIS-S-5	7.24	4766	-0.038	0.026	0.006	0.010	0.000000	0.000000	-1808.71	172.98
3	GUIDE	181806456	8.30	9530	0.087	-0.268	0.064	0.105	127.629228	18.942971	-996.38	120.35
4	GUIDE	182855152	8.73	9527	0.203	0.105	0.072	0.113	128.075990	18.603787	-1809.34	-1653.84
5	GUIDE	181275496	9.65	9523	0.185	-0.021	0.087	0.143	127.684205	18.680730	-1866.78	-290.53
6	GUIDE	182862704	9.35	9527	-0.179	0.025	0.081	0.129	128.030143	19.574387	1539.78	-646.88
7	GUIDE	182859448	9.35	9519	-0.295	0.160	0.119	0.200	128.562655	19.537479	1856.28	-2430.36

2.4 Star Slots

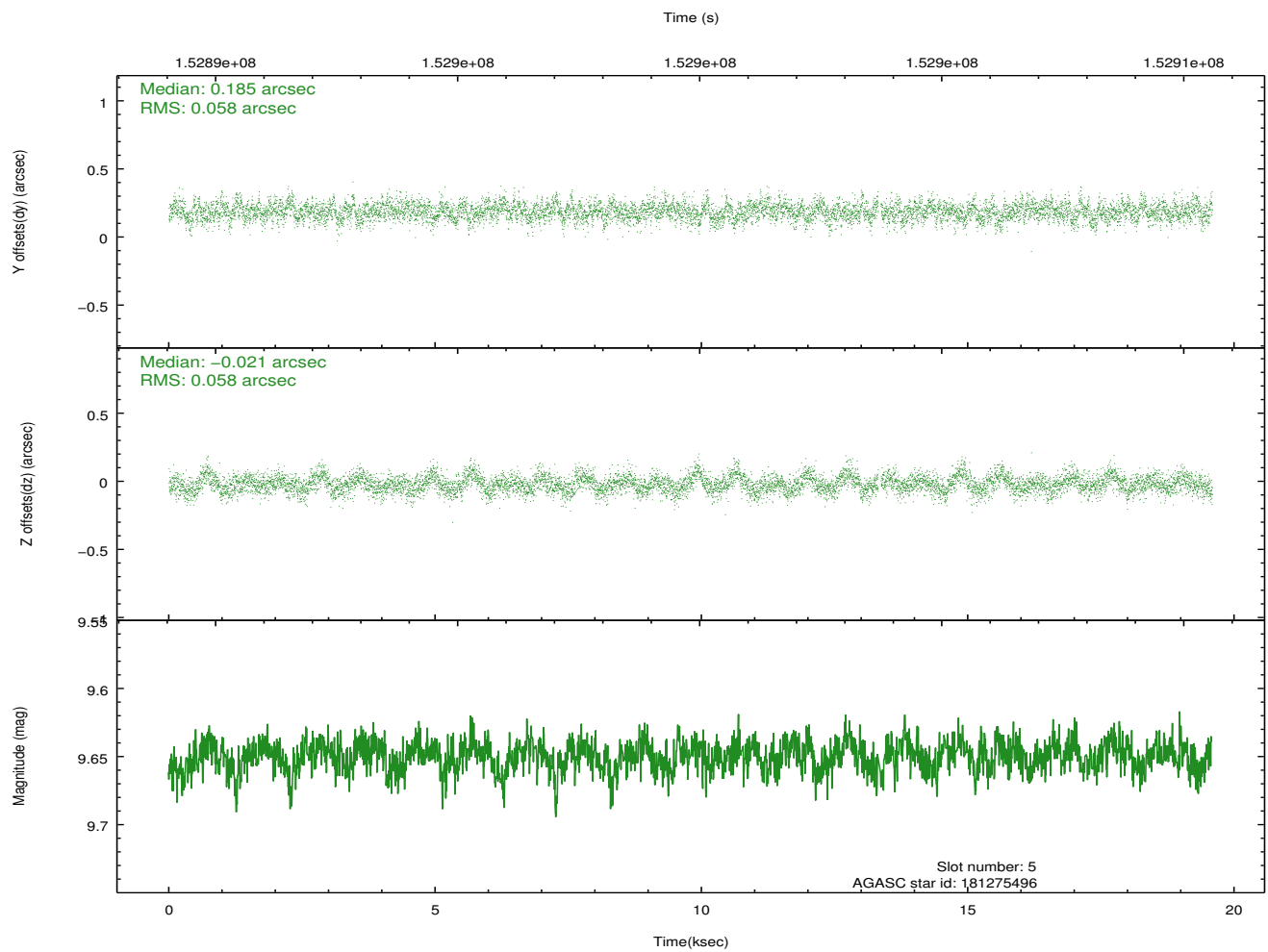
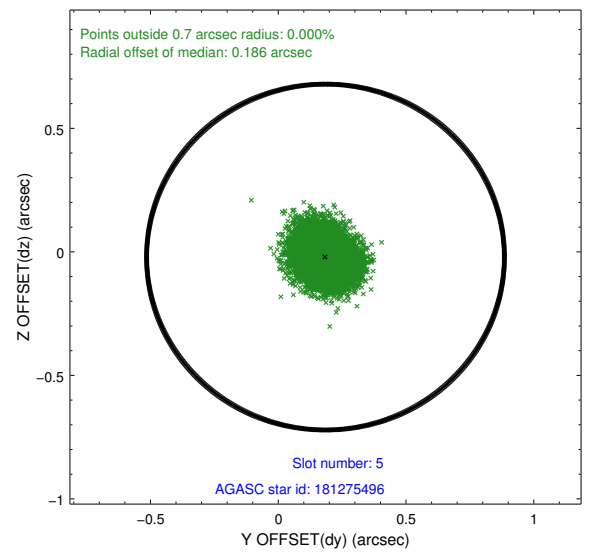
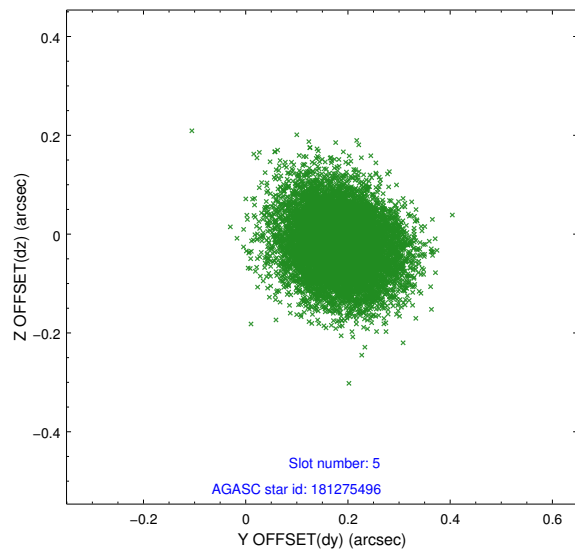
2.4.1 Slot 3



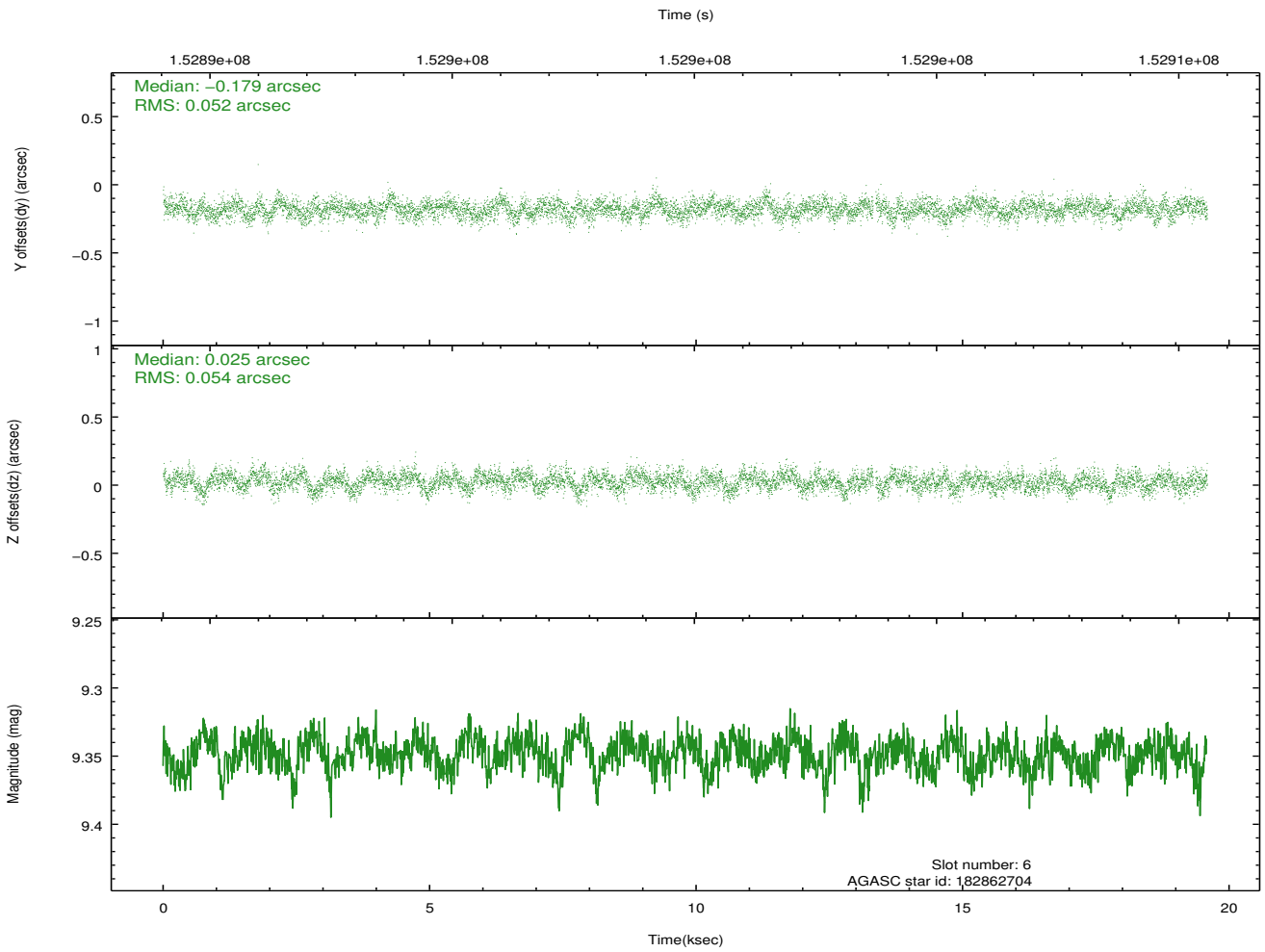
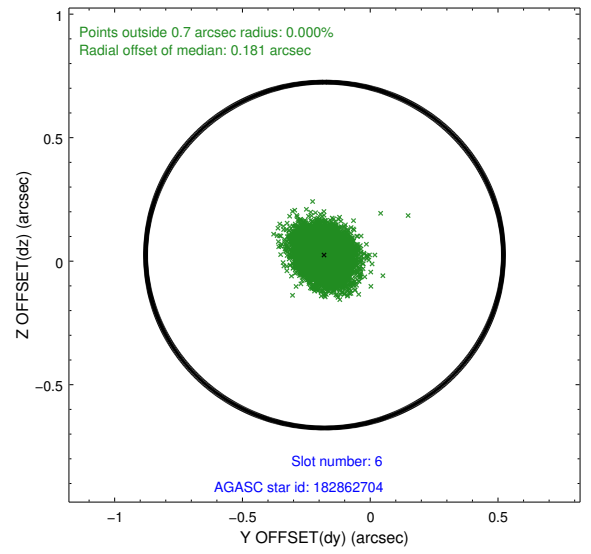
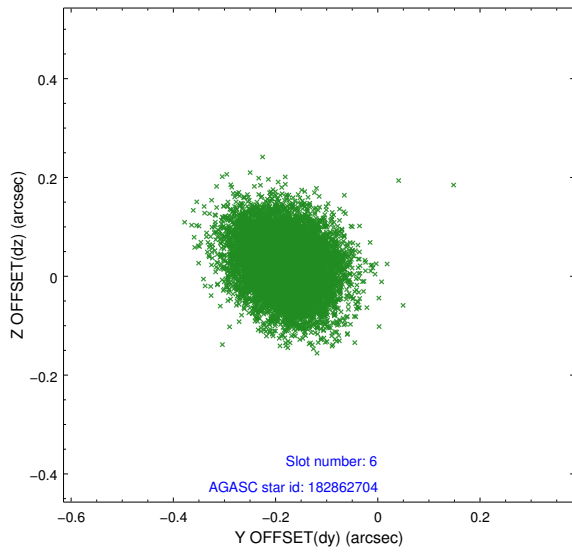
2.4.2 Slot 4



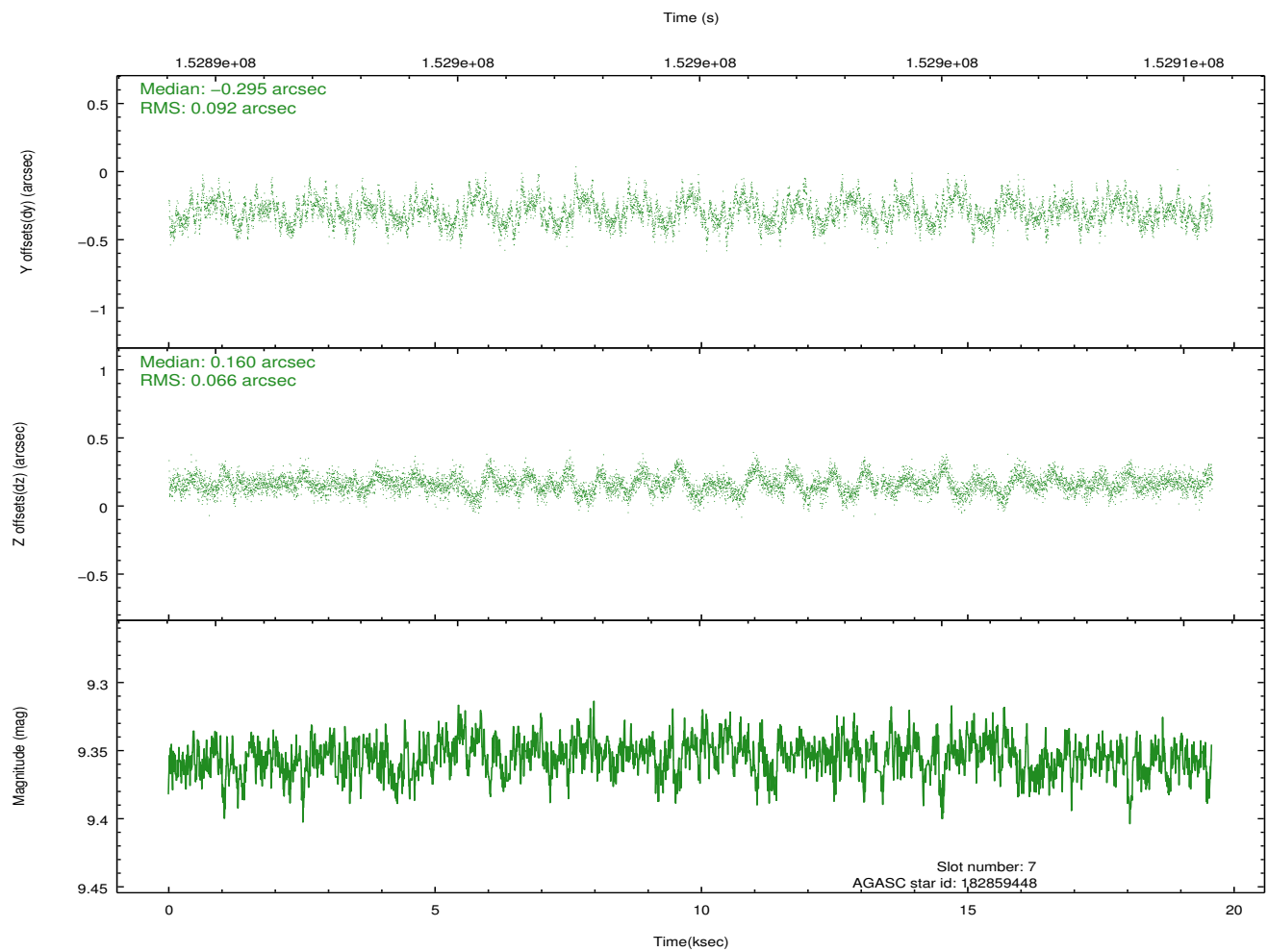
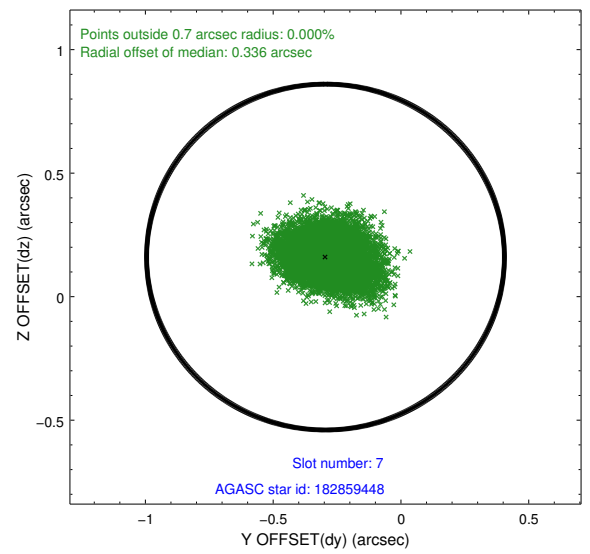
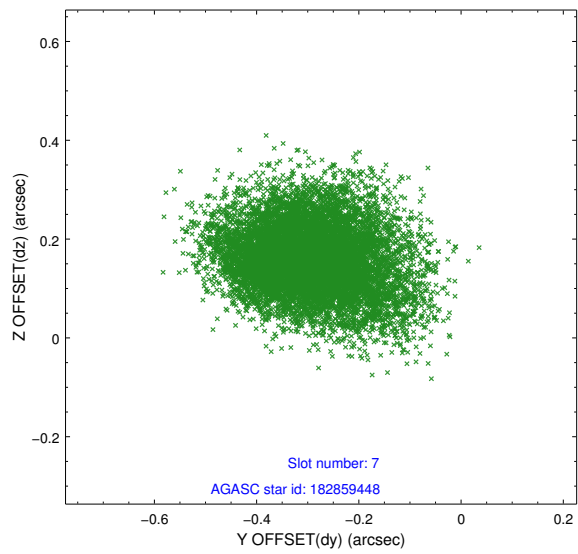
2.4.3 Slot 5



2.4.4 Slot 6

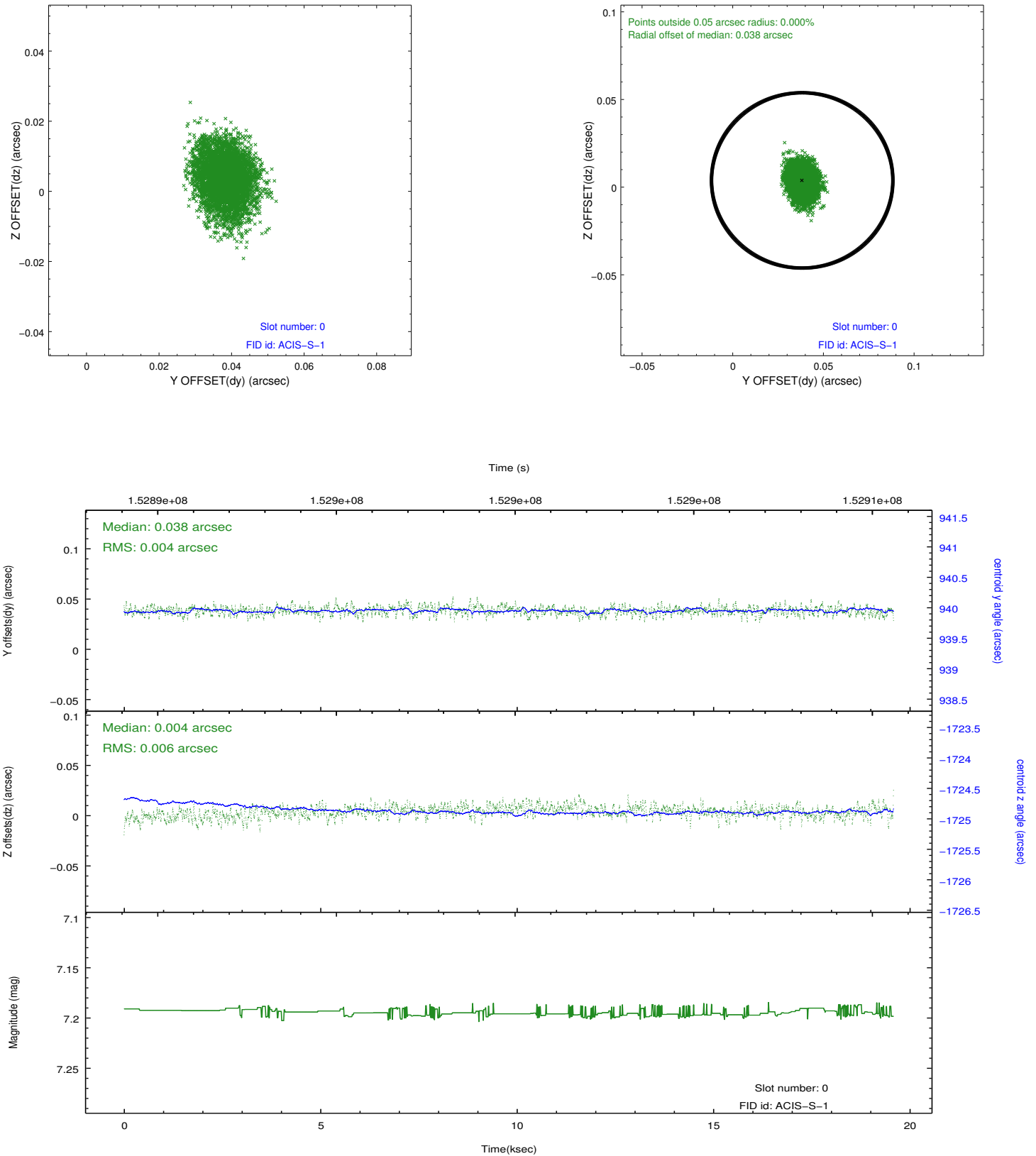


2.4.5 Slot 7

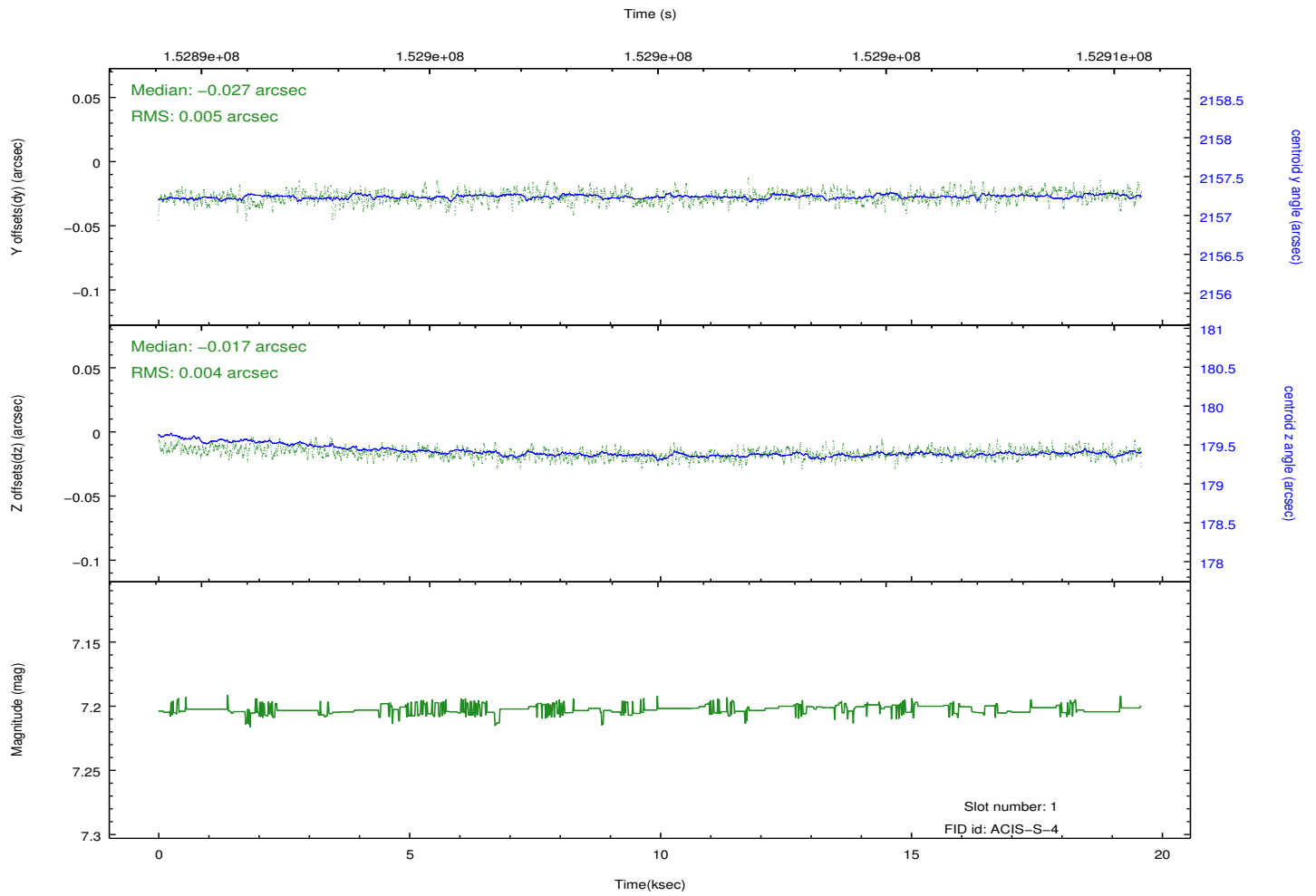
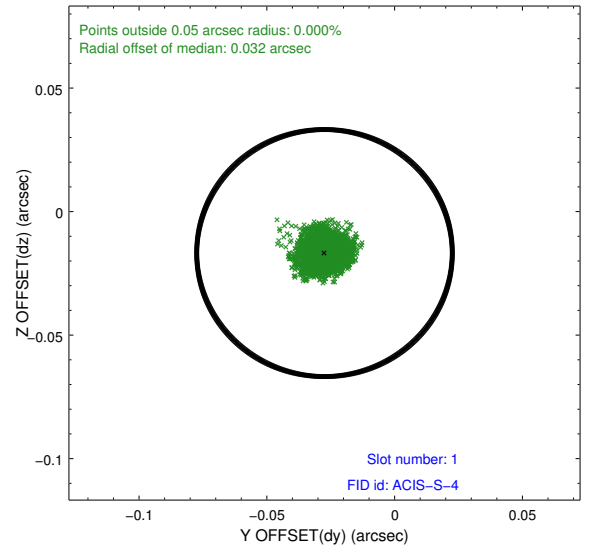
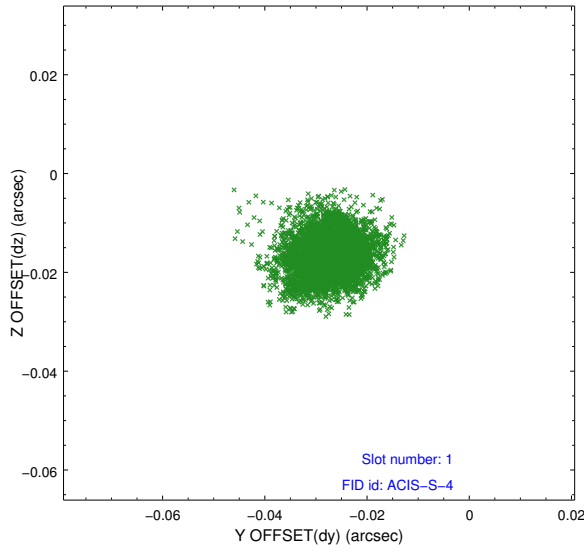


2.5 FID Slots

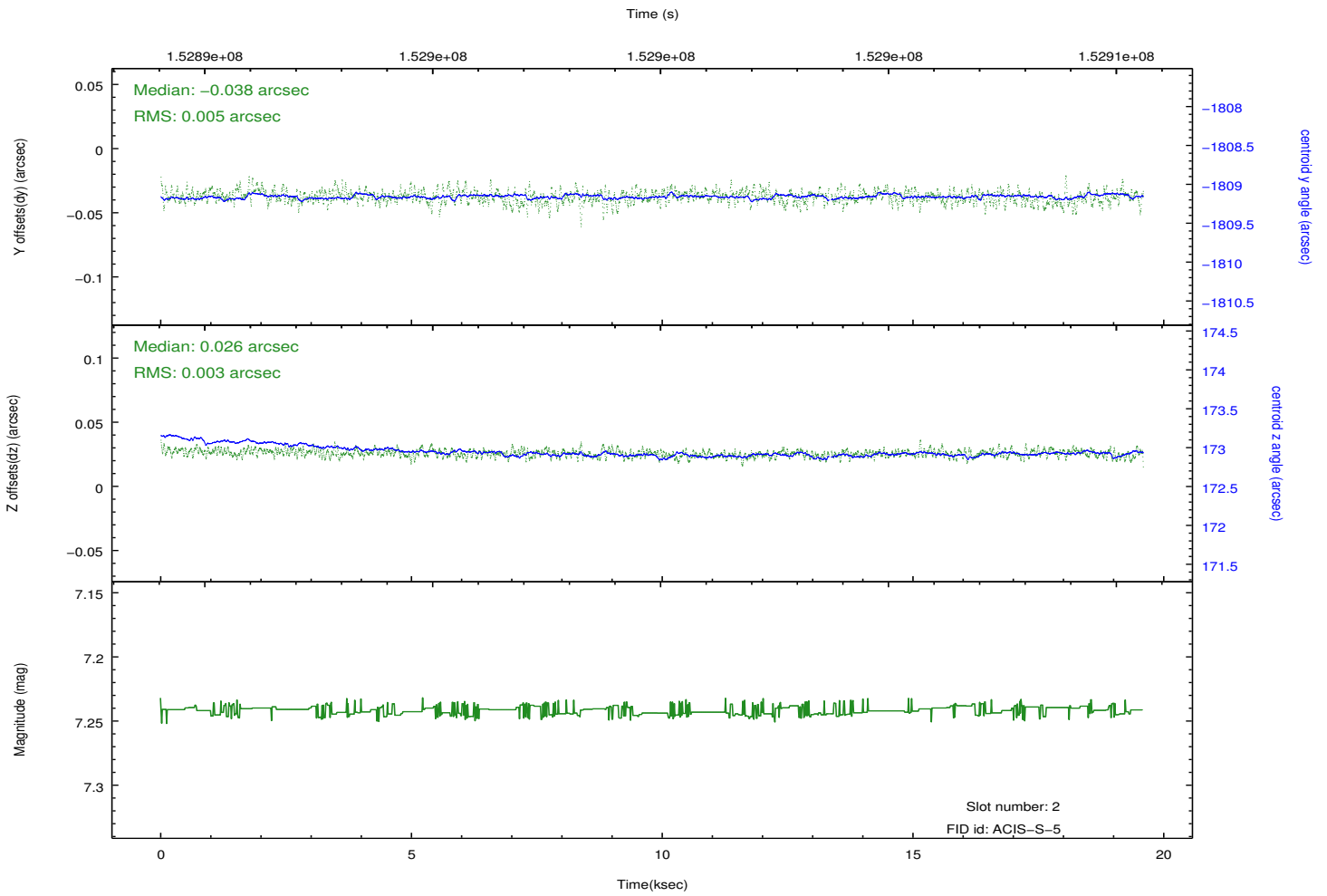
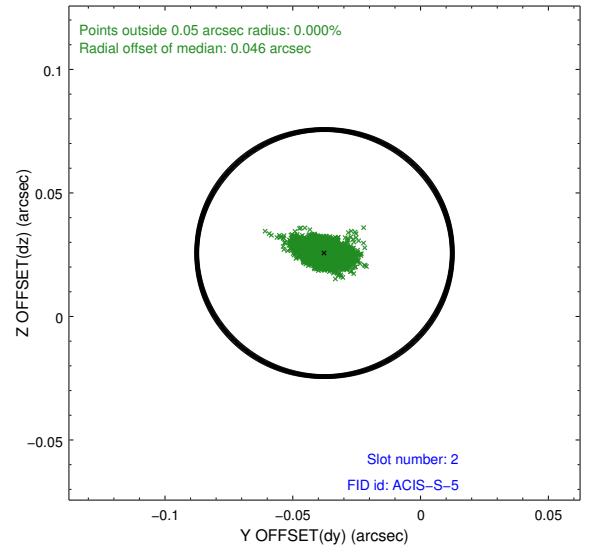
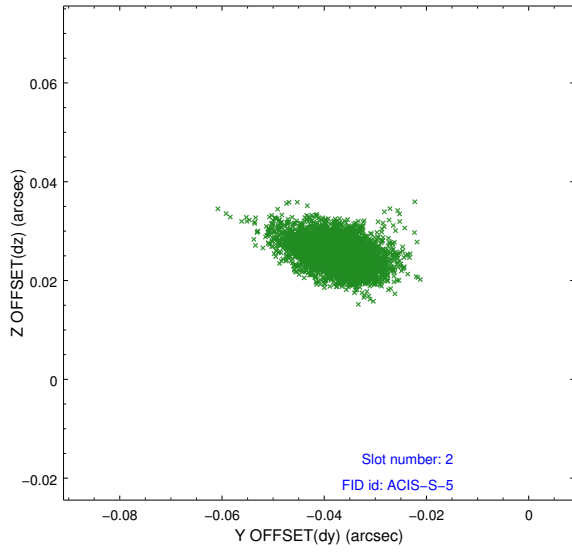
2.5.1 Slot 0



2.5.2 Slot 1



2.5.3 Slot 2



A Summary

A.1 Status

V&V Scientist	Jen Lauer
V&V Date (YYYY-MM-DD)	2012.10.26
V&V Edition	1
V&V Disposition and Status	OK
V&V Charge Time	19.212

A.2 Comments