

V&V Reference Report

L2 ASCDS Version : 8.4.5

Observation 3279 - L2 Version 3
Chandra X-Ray Center

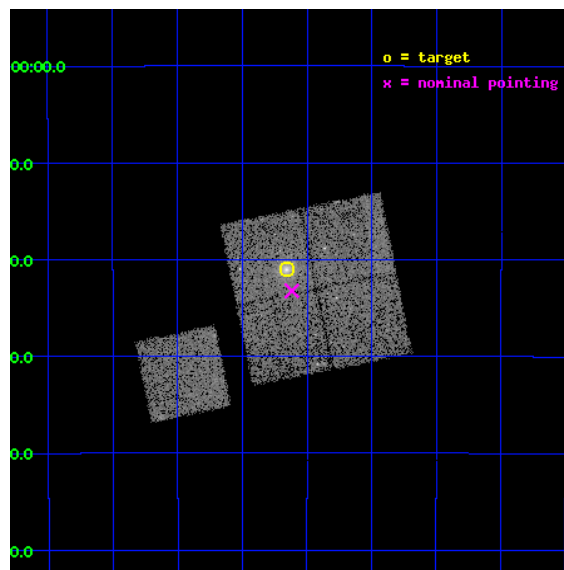
L2 Processing Date : Oct 10 2012

Contents

1	Front	2
2	OBI	3
2.1	OBI	3
2.1.1	Images	3
2.1.2	Bias	3
2.1.3	Parameters	4
2.1.4	Events	4
2.2	Compared Parameters	5
2.3	Aspect	6
2.4	Star Slots	9
2.4.1	Slot 3	9
2.4.2	Slot 4	10
2.4.3	Slot 5	11
2.4.4	Slot 6	12
2.4.5	Slot 7	13
2.5	FID Slots	14
2.5.1	Slot 0	14
2.5.2	Slot 1	15
2.5.3	Slot 2	16
A	Summary	17
A.1	Status	17
A.2	Comments	17

1 Front

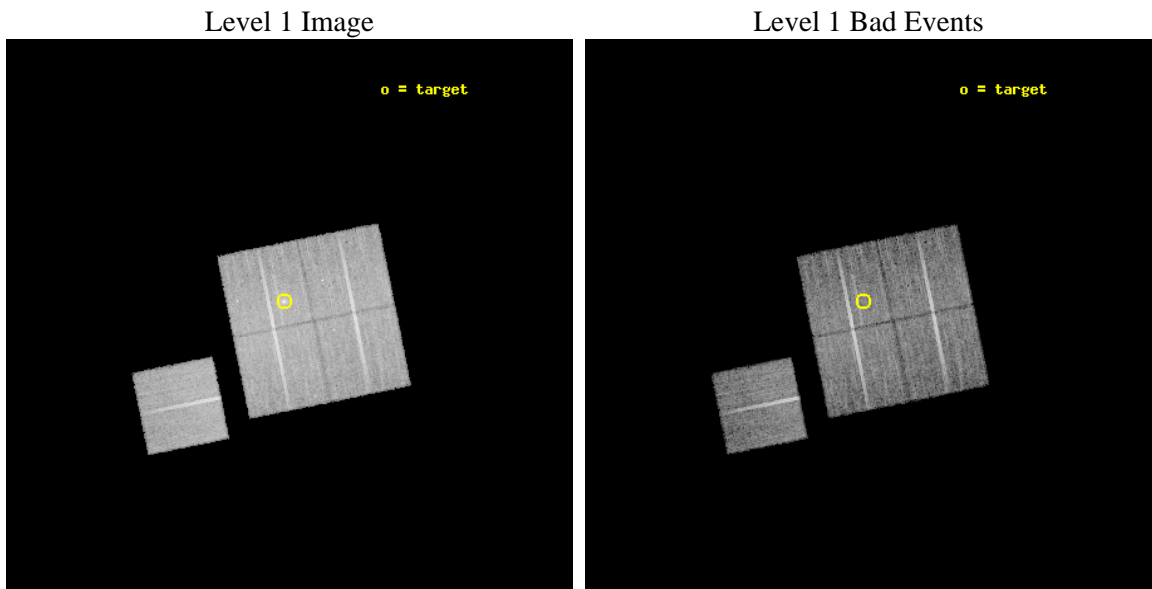
seq_num	800279	Sequence number
obs_id	3279	Observation id
title	MACS: THE X-RAY PROPERTIES OF THE MOST MASSIVE GALAXY CLUSTERS AT Z>0.3	Proposal title
observer	Dr. Harald Ebeling	Principal investigator
object	MACSJ1427.6-2521	Source name
dtcycle	0	
cycle	P	events from which exps? Prim/Second/Both
ra_targ	216.914583	Observer's specified target RA [deg]
dec_targ	-25.350833	Observer's specified target Dec [deg]
ra_nom	216.90421799346	Nominal RA [deg]
dec_nom	-25.387307087961	Nominal Dec [deg]
roll_nom	258.543530367	Nominal Roll [deg]
revision	3	Processing version of data
ontime	17149.158996761	Sum of GTIs [s]
livetime	16925.092609441	Livetime [s]
ontime0	17149.158976853	Sum of GTIs [s]
ontime1	17146.018026531	Sum of GTIs [s]
ontime2	17149.158976853	Sum of GTIs [s]
ontime3	17149.158996761	Sum of GTIs [s]
ontime6	17152.299966991	Sum of GTIs [s]
l2events	44627	Number of level 2 events



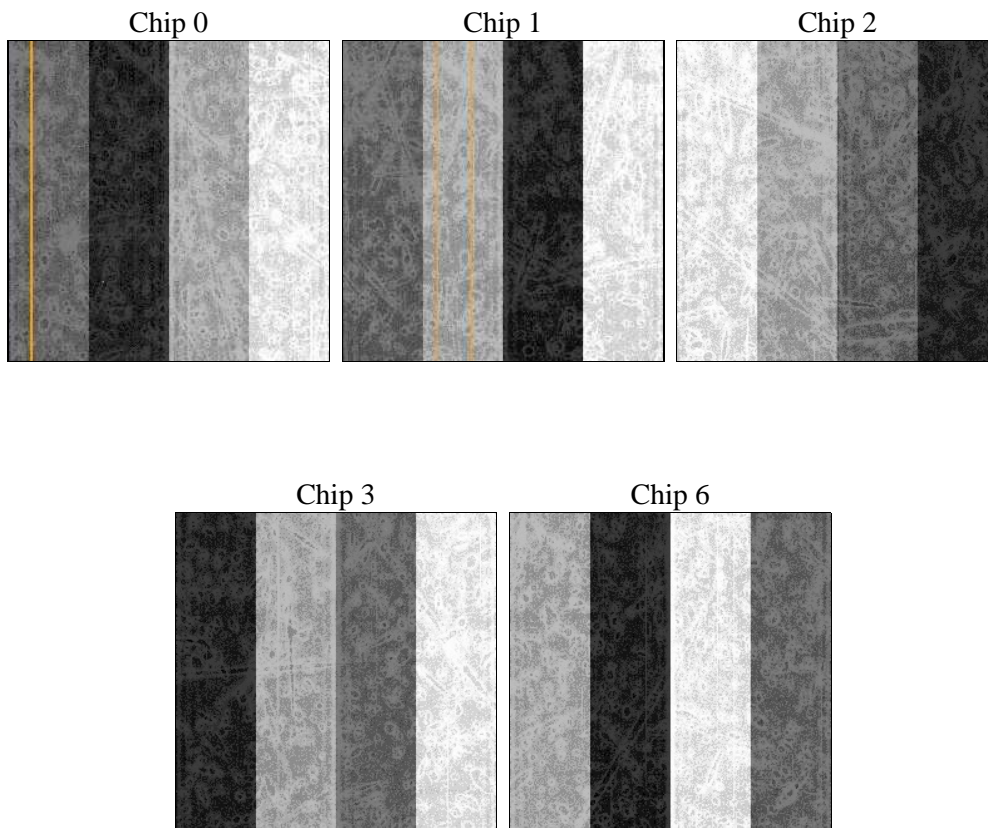
2 OBI

2.1 OBI

2.1.1 Images



2.1.2 Bias



2.1.3 Parameters

obi_num	0	Obi number	sched_exp_time	17000.000000	[s] Scheduled observation exposure time
ascdsver	8.4.5	Processing system revision	ontime	17149.158996761	Sum of GTIs [s]
caldbver	4.5.2	 	ontime0	17149.158976853	Sum of GTIs [s]
date	2012-10-10T03:34:56	Date and time of file creation	ontime1	17146.018026531	Sum of GTIs [s]
revision	3	Processing version of data	ontime2	17149.158976853	Sum of GTIs [s]
			ontime3	17149.158996761	Sum of GTIs [s]
			ontime6	17152.299966991	Sum of GTIs [s]
			l1events	486578	Number of level 1 events

2.1.4 Events

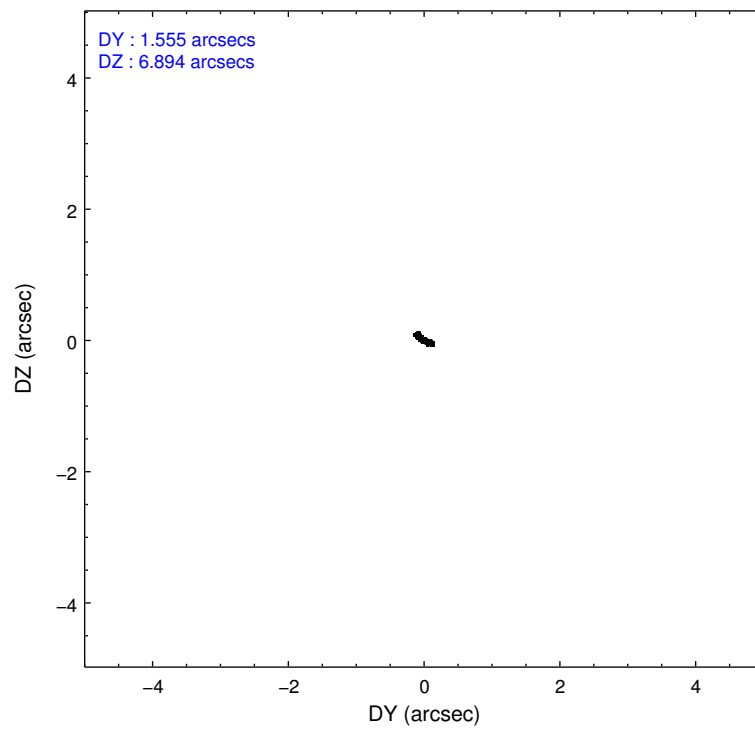
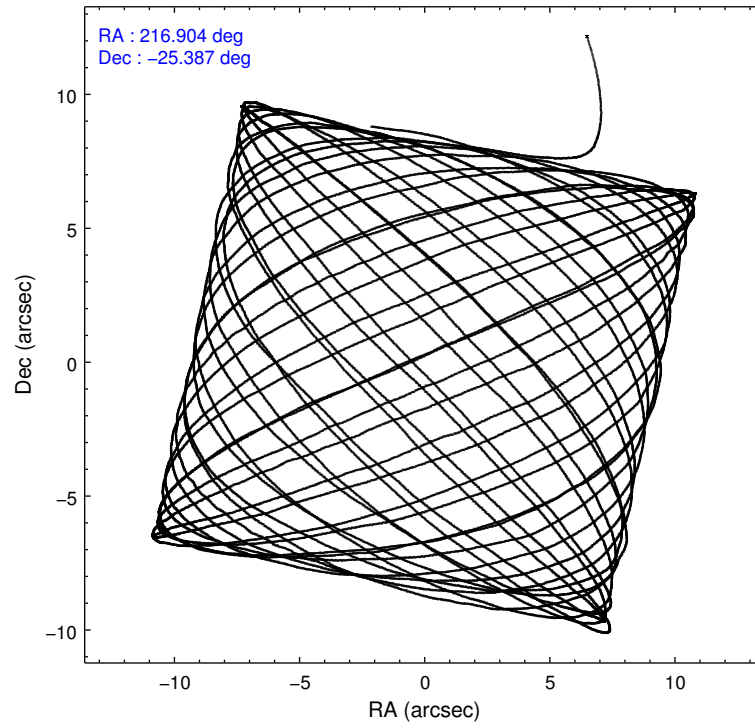
	ccd 0	ccd 1	ccd 2	ccd 3	ccd 6
level 1 events	91314	92805	101921	101809	98729
rejected events	81572	81809	92288	88779	88958
rejected %	89%	88%	90%	87%	90%

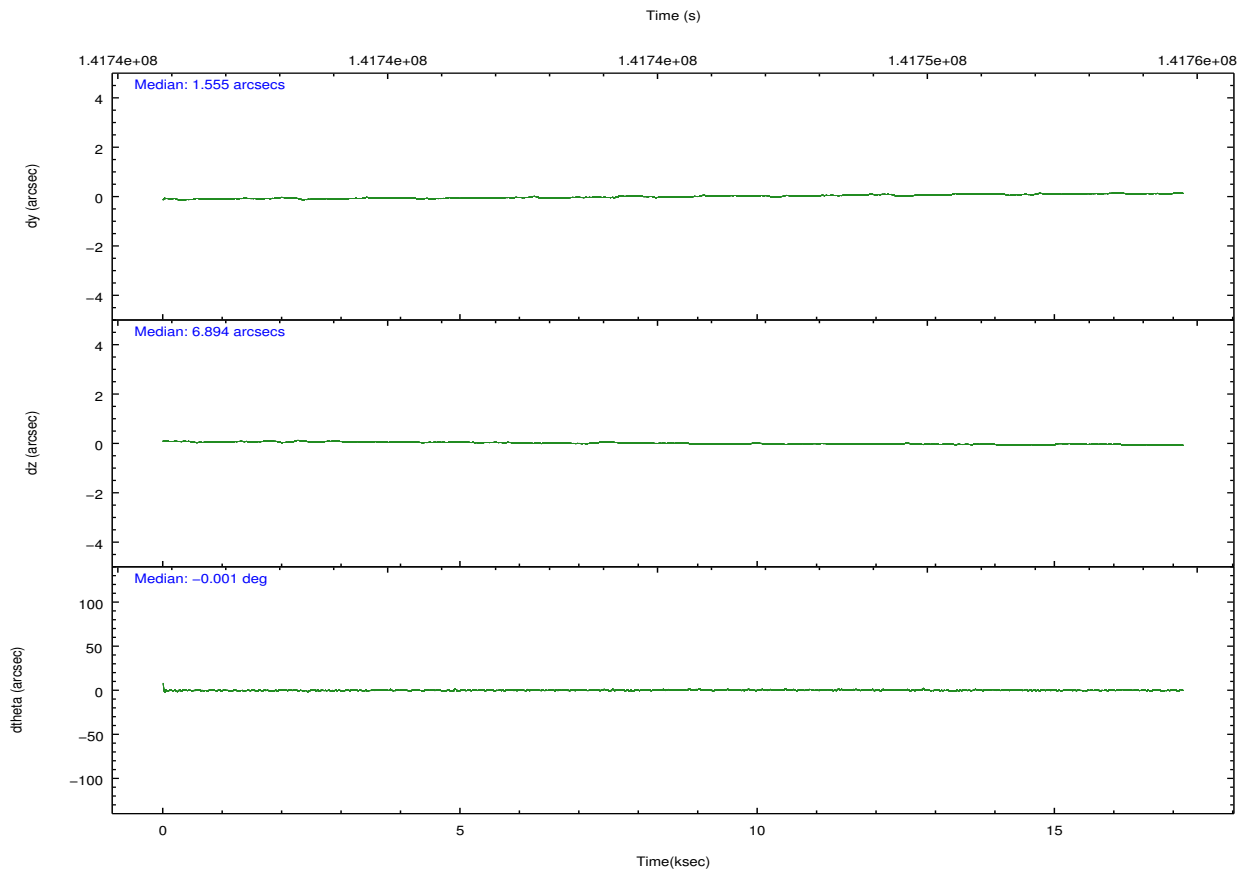
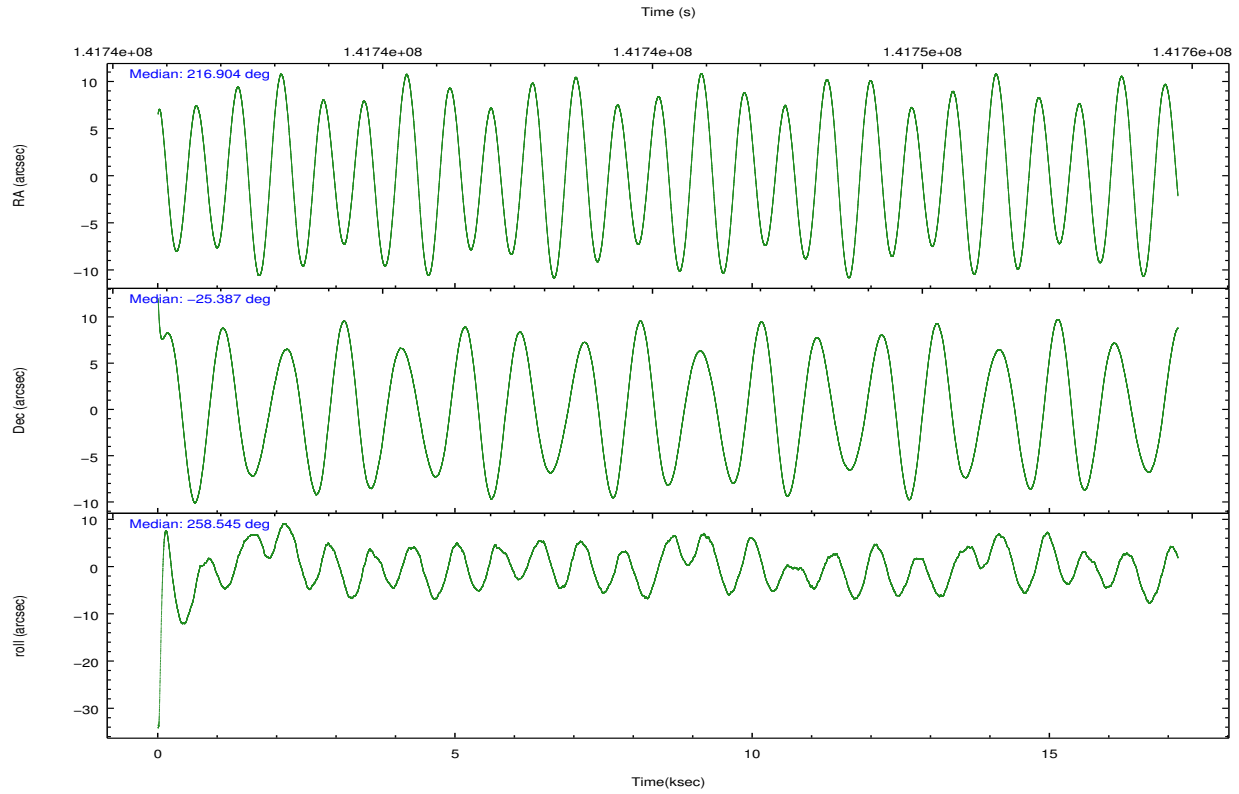
	ccd 0	ccd 1	ccd 2	ccd 3	ccd 6
grade 0 events	3621	4346	3658	6591	3570
	3%	4%	3%	6%	3%
grade 1 events	41	45	29	60	31
	0%	0%	0%	0%	0%
grade 2 events	2153	2198	2205	2283	2032
	2%	2%	2%	2%	2%
grade 3 events	1099	1288	1031	1165	1130
	1%	1%	1%	1%	1%
grade 4 events	1026	1235	993	1126	1115
	1%	1%	0%	1%	1%
grade 5 events	3169	3531	3046	3488	3584
	3%	3%	2%	3%	3%
grade 6 events	1885	1975	1784	1917	1968
	2%	2%	1%	1%	1%
grade 7 events	78320	78187	89175	85179	85299
	85%	84%	87%	83%	86%

2.2 Compared Parameters

Parameter	Planned	Actual	Parameter	Planned	Actual
Instrument	ACIS	ACIS	Obspar format version number	7	7
Detector	ACIS-01236	ACIS-01236	Obspar file type	PREDICTED	ACTUAL
Grating	NONE	NONE	Obspar update status	NONE	UPDATED
Data mode	VFAINT	VFAINT	Number of optional ACIS chips dropped	0	0
Observation mode	POINTING	POINTING	On-chip summing requested	N	N
[deg] Pointing RA	216.894472	216.9042179934628	Subarray requested	NONE	NONE
[deg] Pointing Dec	-25.361378	-25.38730708796053	Alternating exposures requested	N	N
[deg] Pointing Roll	258.330711	258.5435303670026	[s] Primary exposure time	0.000000	3.1
[mm] SIM focus pos	-0.782348	-0.7809083437167272			
[mm] SIM defocus	0	0.001439871863259334			
[mm] SIM translation stage pos	-227.742463	-227.734108438797			
[mm] SIM translation stage offset	-5.85	-5.858344564132665			
[s] Observation start time (MET)	141736868.184000	141735719.79101			
Observation start date	2002-06-29T11:20:04	2002-06-29T11:01:59			
[s] Observation end time (MET)	141753868.184000	141754662.30429			
Observation end date	2002-06-29T16:03:24	2002-06-29T16:17:42			
Read mode	TIMED	TIMED			

2.3 Aspect



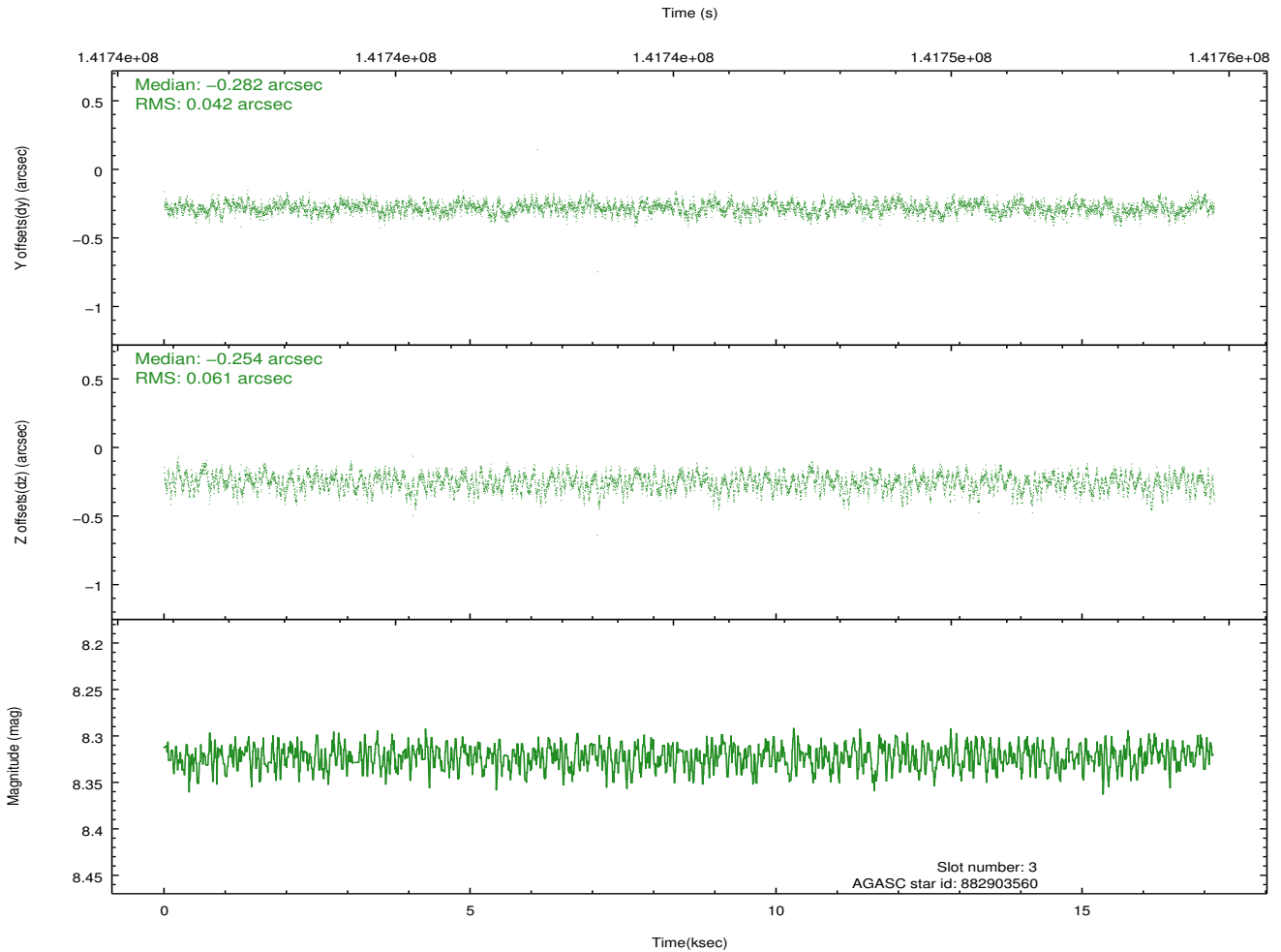
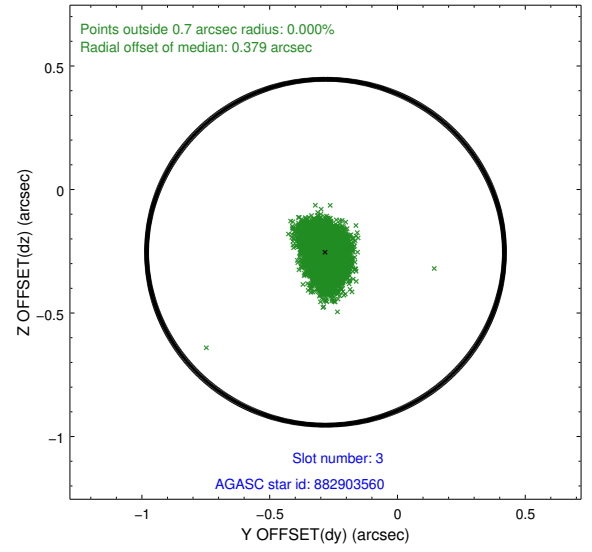
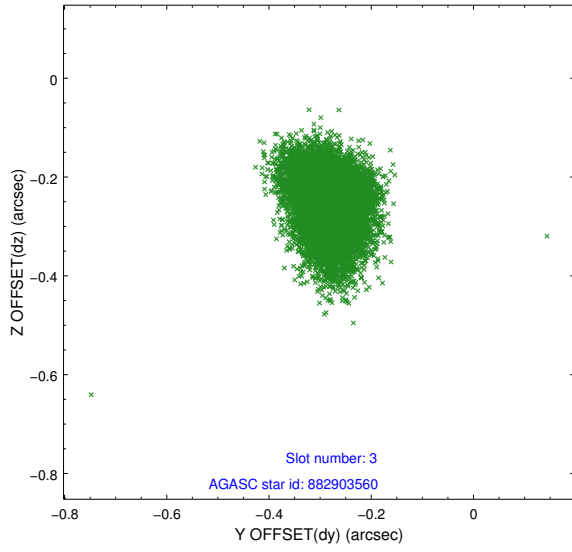


Slot Statistics

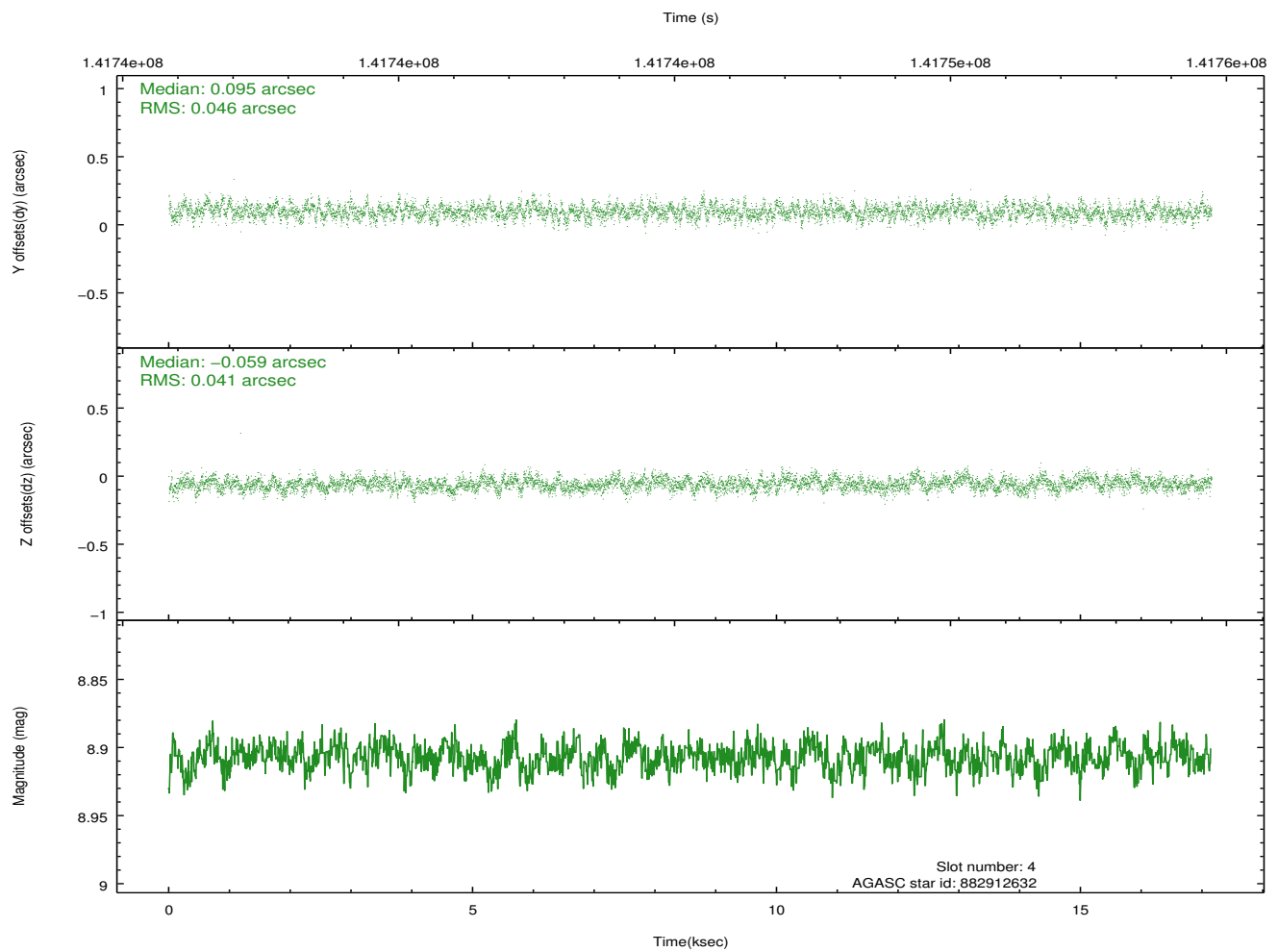
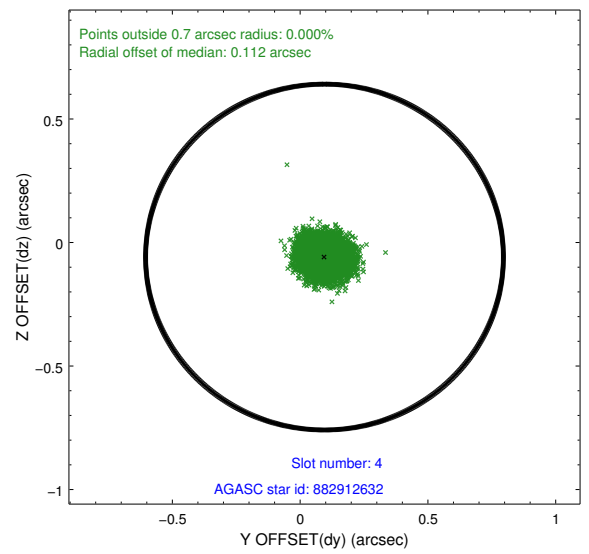
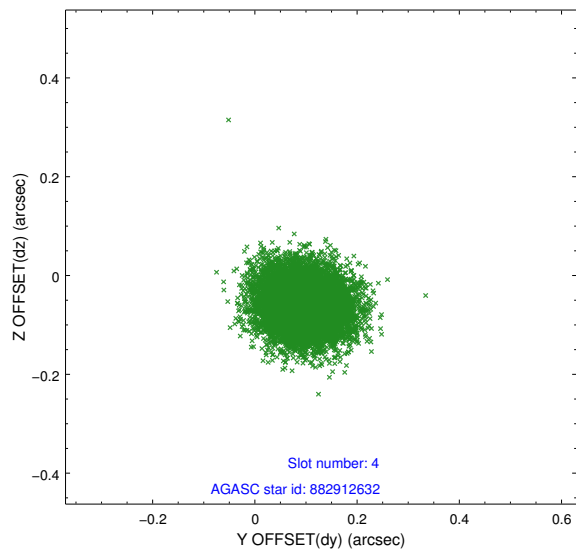
slot	status	id	mag	n_pts	med_dy	med_dz	dr1	dr2	ra	dec	mean_y	mean_z
0	FID	ACIS-I-1	7.25	4185	0.052	0.007	0.007	0.012	0.000000	0.000000	938.19	-950.54
1	FID	ACIS-I-5	7.23	4185	-0.131	0.085	0.006	0.011	0.000000	0.000000	-1809.92	946.93
2	FID	ACIS-I-6	7.25	4184	-0.012	-0.022	0.007	0.011	0.000000	0.000000	403.47	1591.56
3	GUIDE	882903560	8.32	8366	-0.282	-0.254	0.077	0.126	216.363435	-24.581956	-2393.38	-2268.95
4	GUIDE	882912632	8.91	8362	0.095	-0.059	0.067	0.107	216.917283	-25.888697	1843.92	456.79
5	GUIDE	882911592	9.61	8362	0.108	0.142	0.109	0.174	217.181708	-25.965748	1944.02	1351.76
6	GUIDE	882908584	9.55	8338	0.171	0.053	0.131	0.262	216.716105	-25.804330	1679.31	-242.53
7	GUIDE	882901352	9.56	8341	-0.093	0.111	0.117	0.183	217.467987	-24.849734	-2178.76	1464.03

2.4 Star Slots

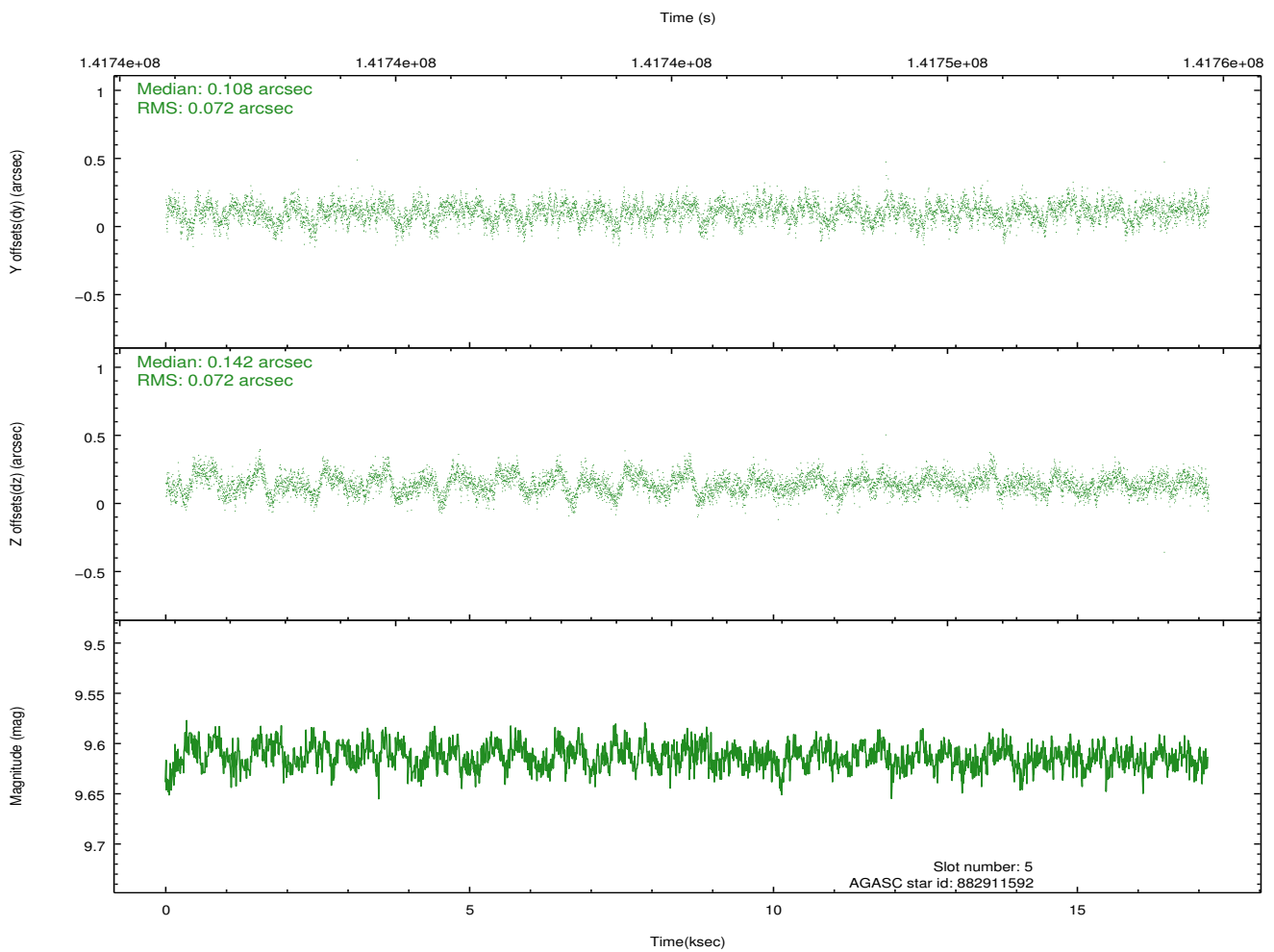
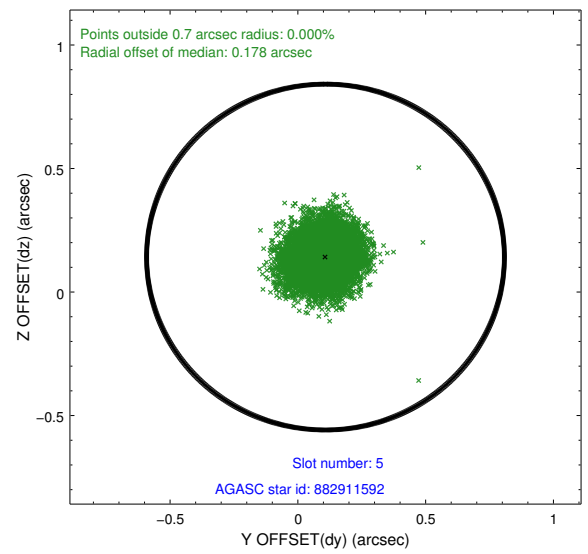
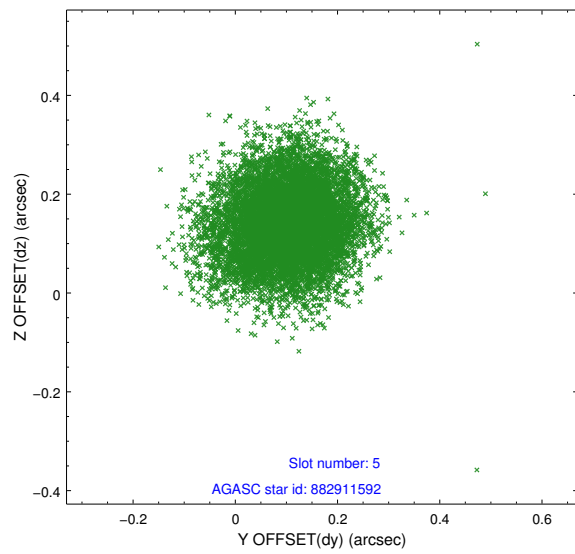
2.4.1 Slot 3



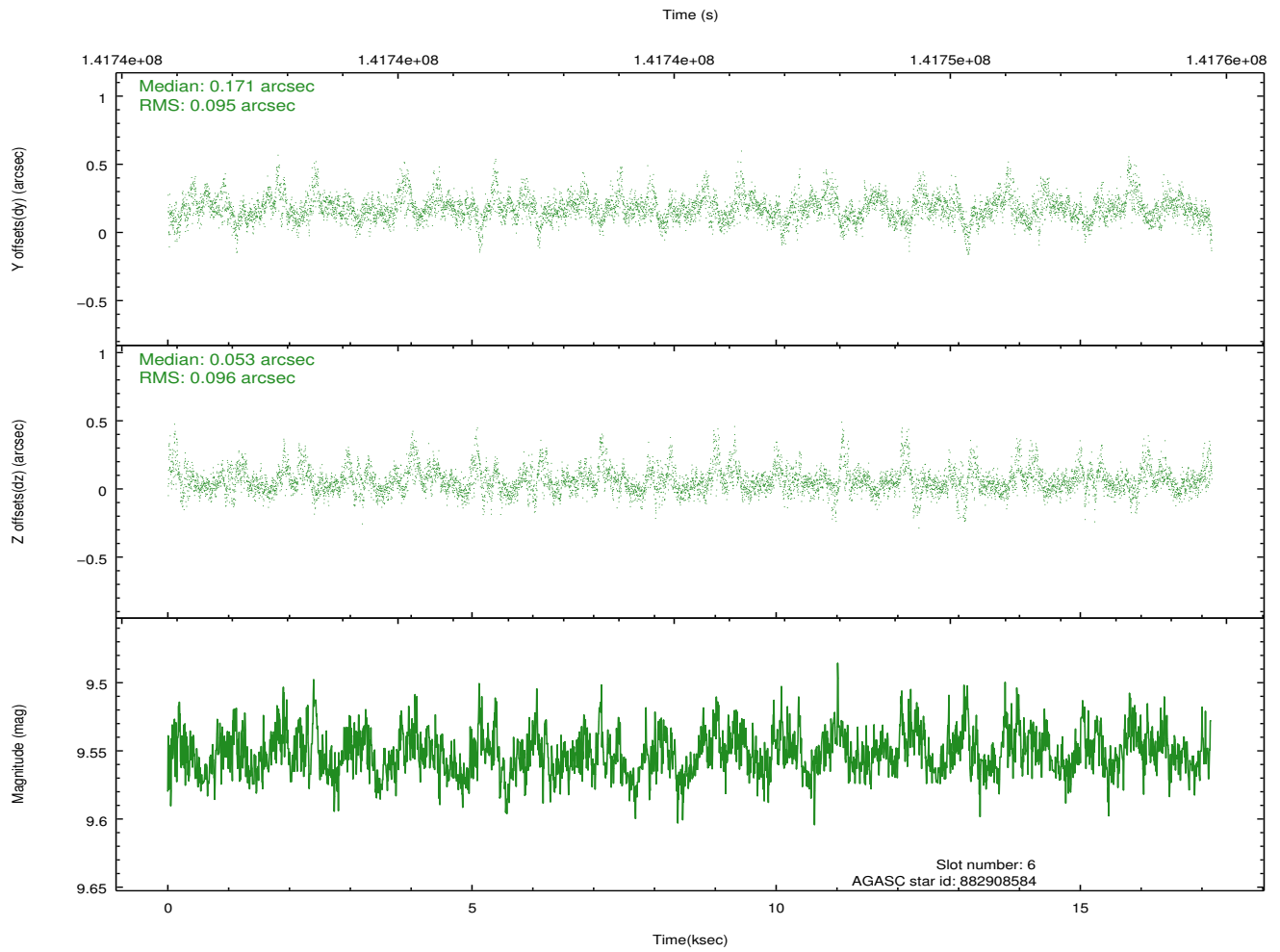
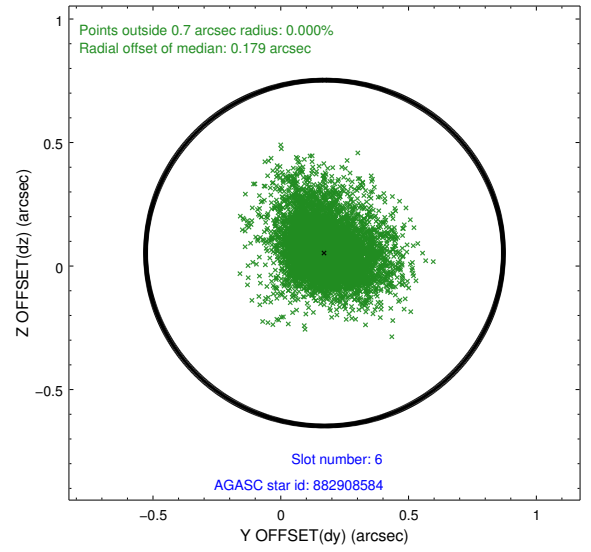
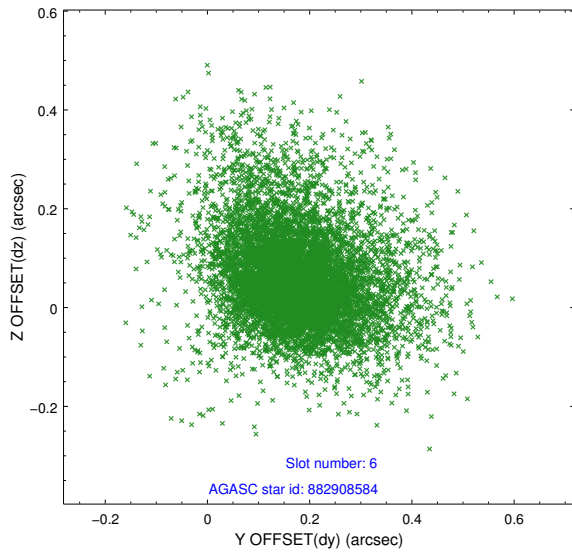
2.4.2 Slot 4



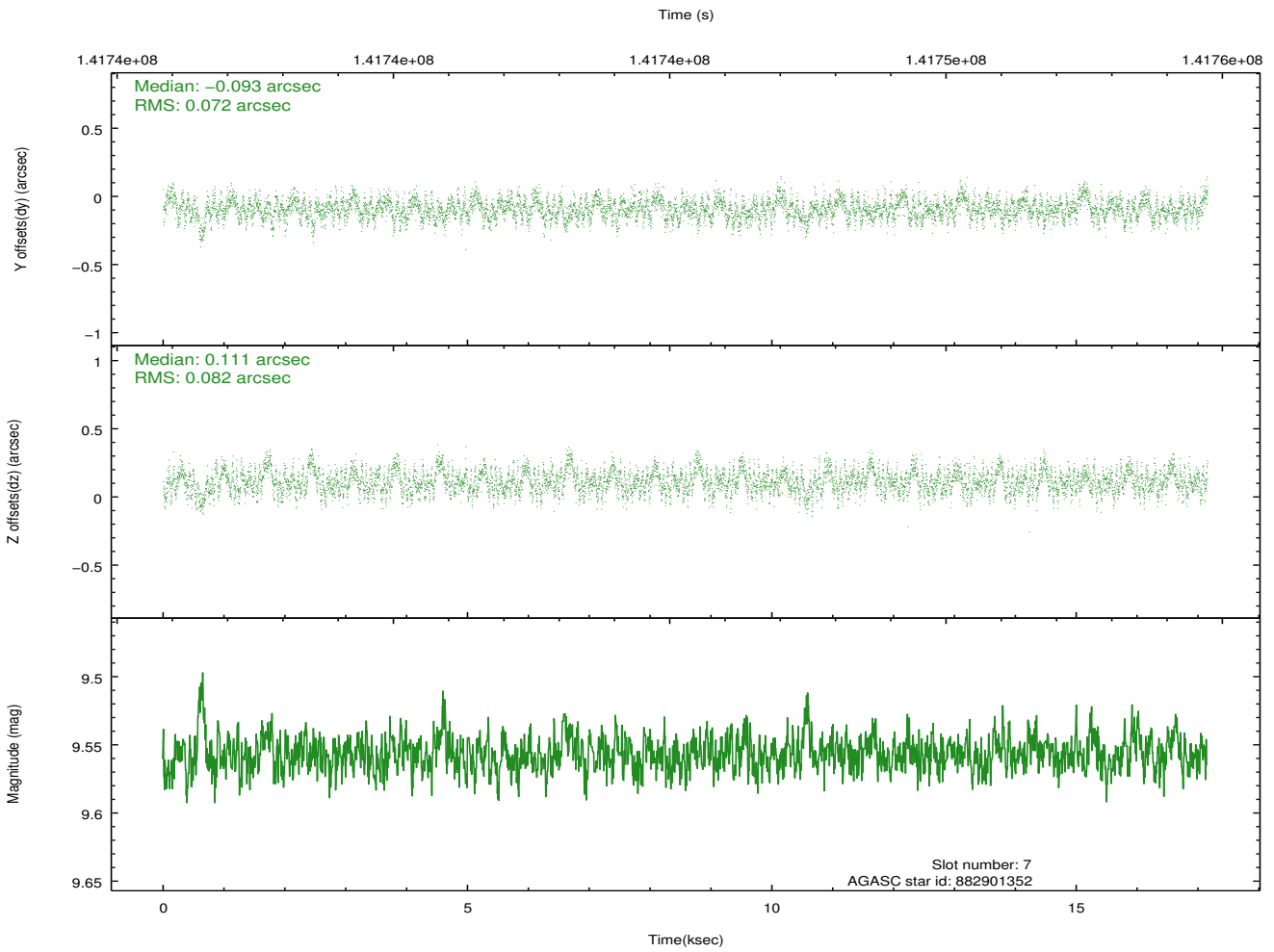
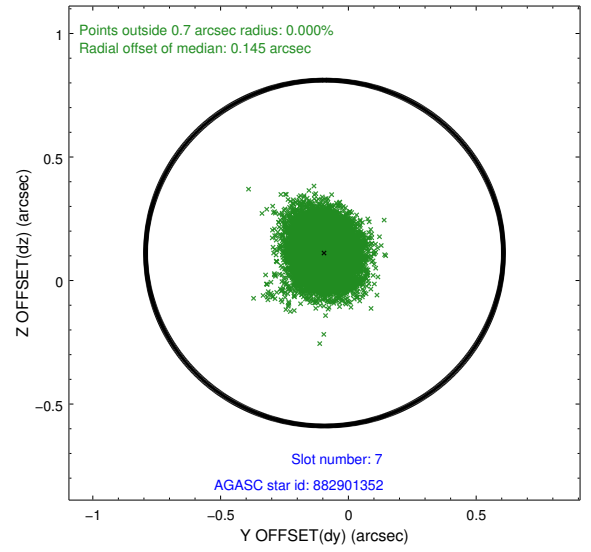
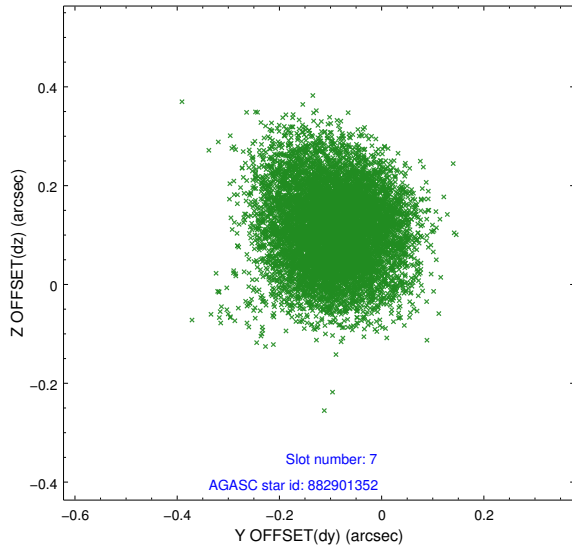
2.4.3 Slot 5



2.4.4 Slot 6

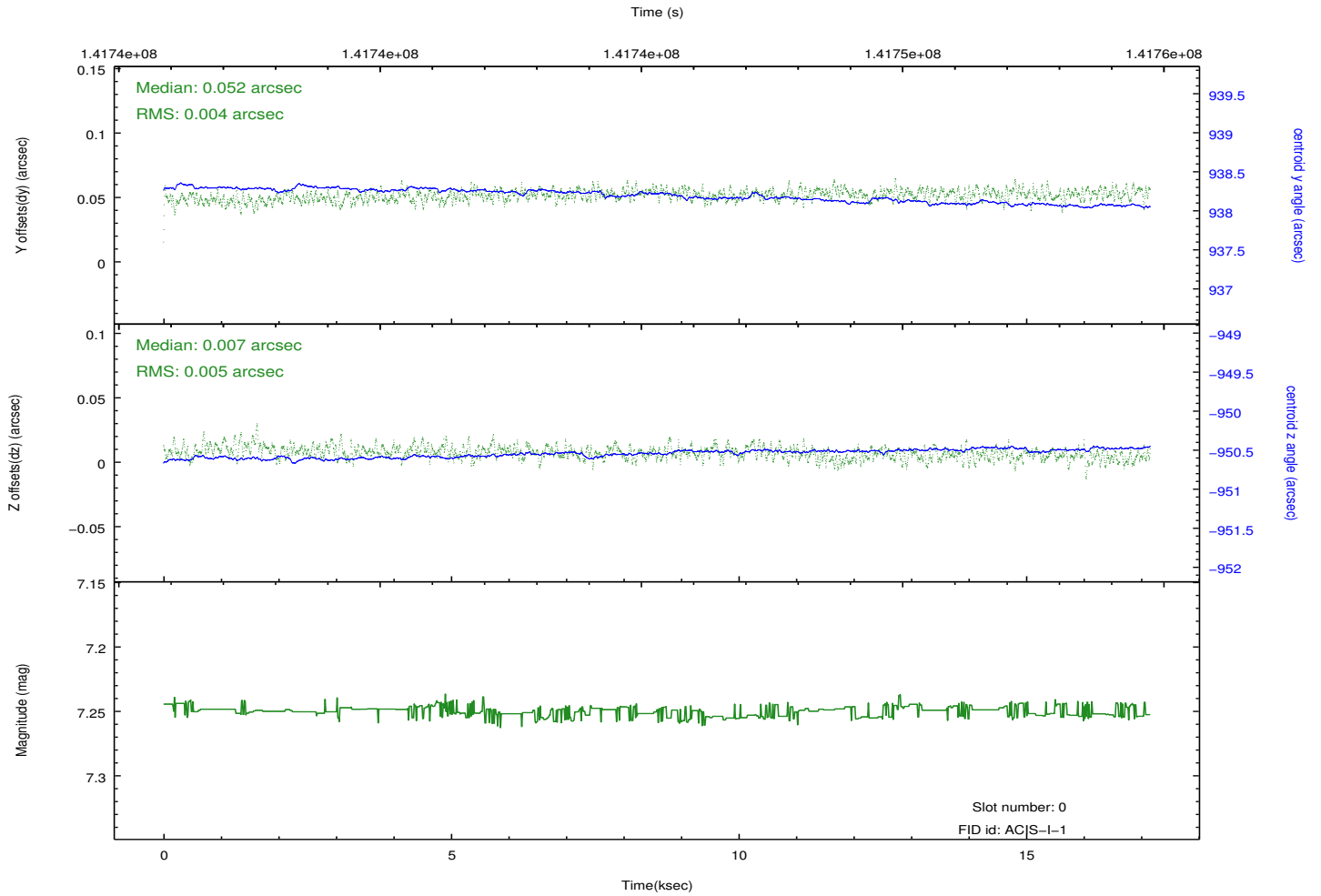
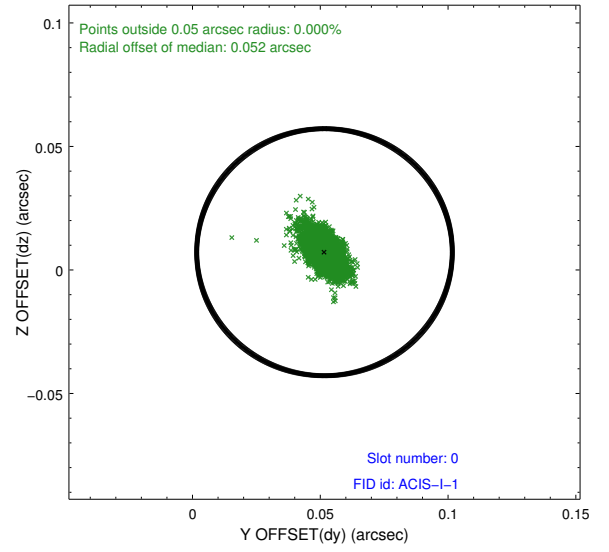
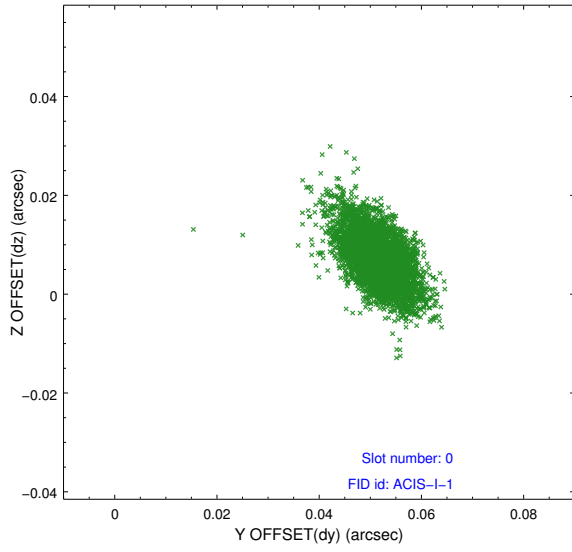


2.4.5 Slot 7

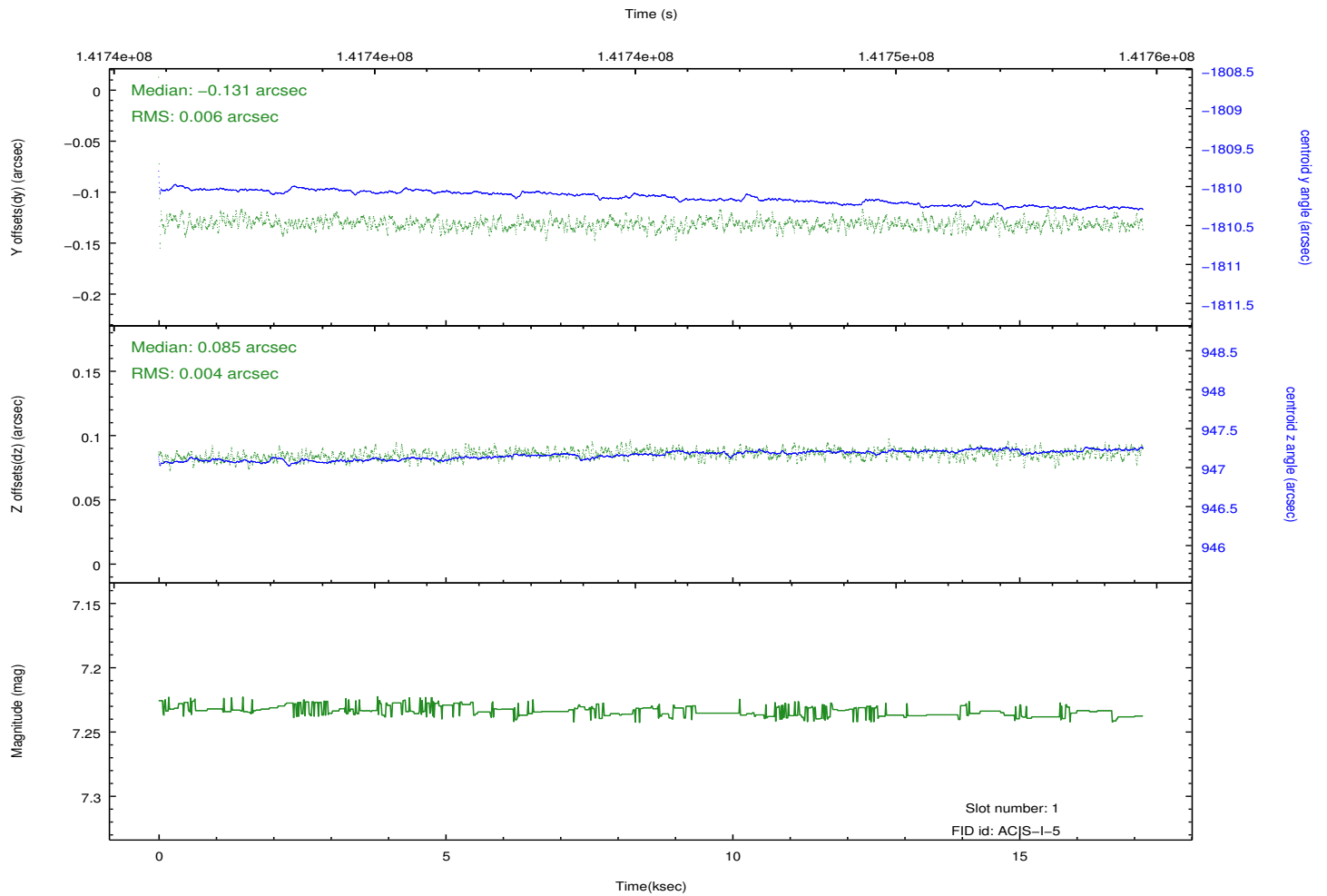
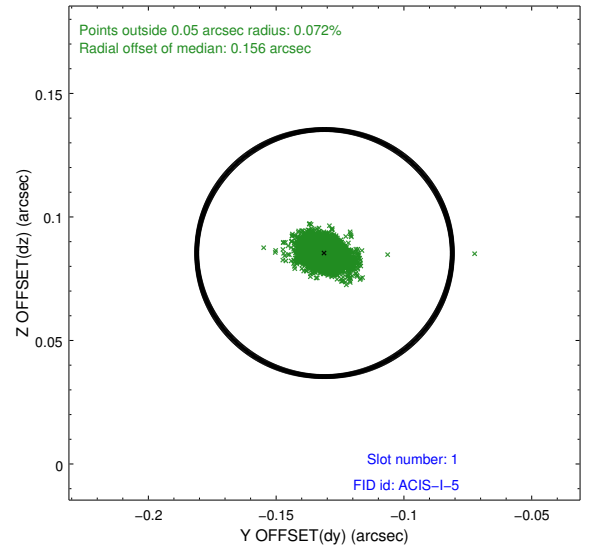
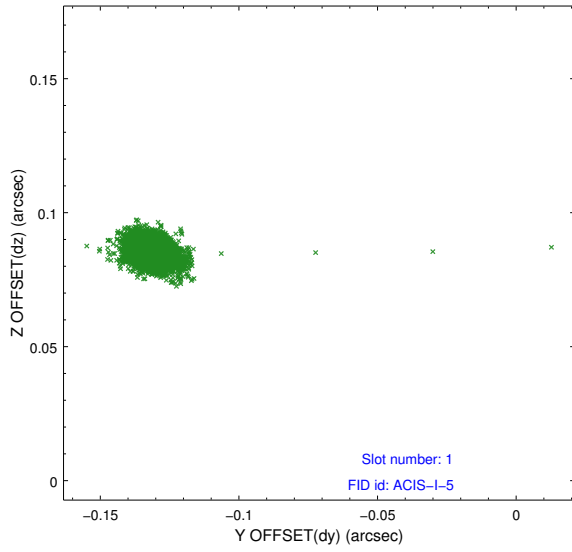


2.5 FID Slots

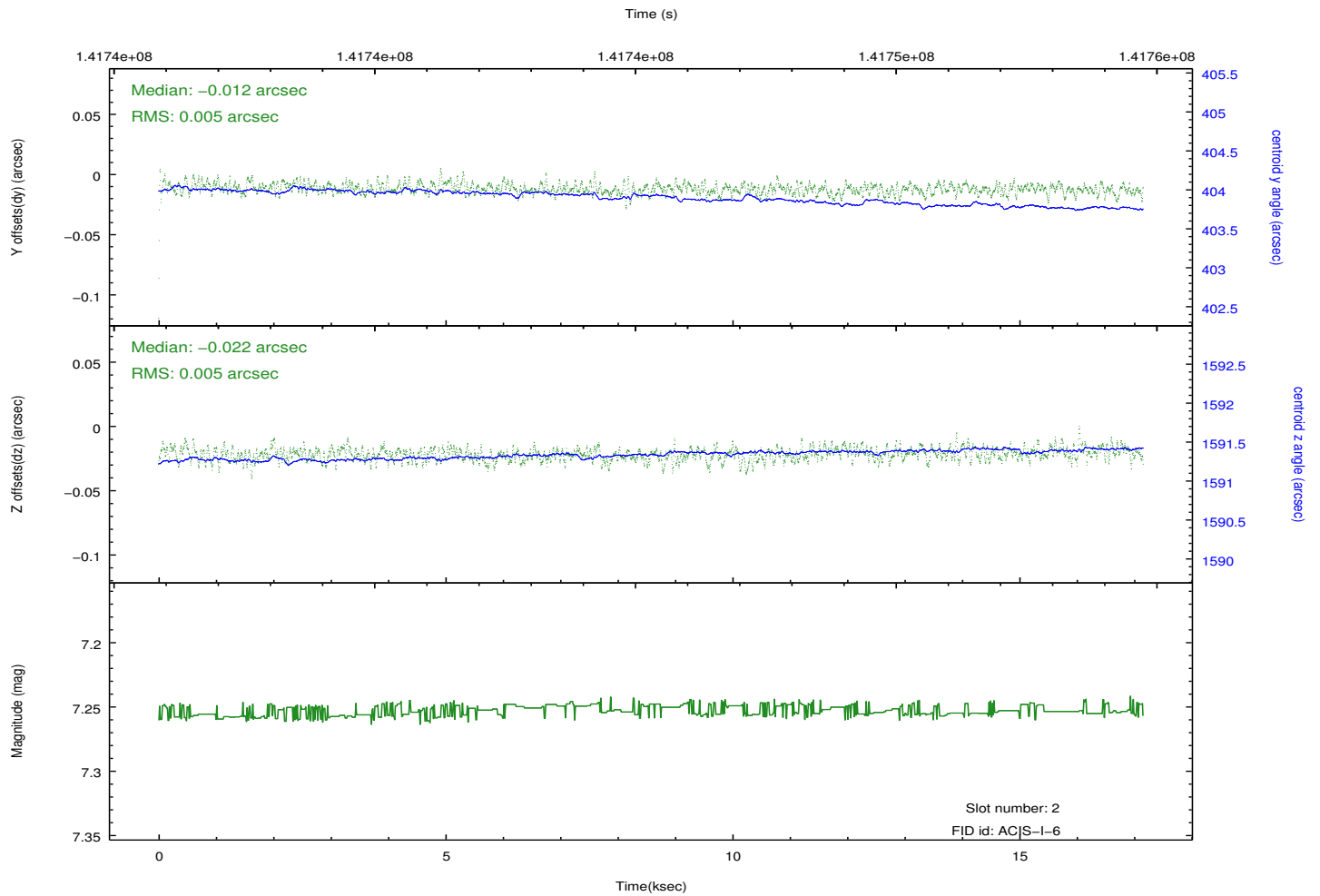
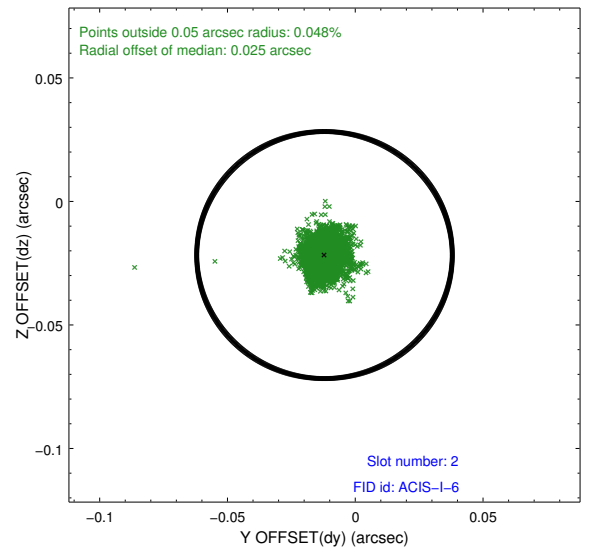
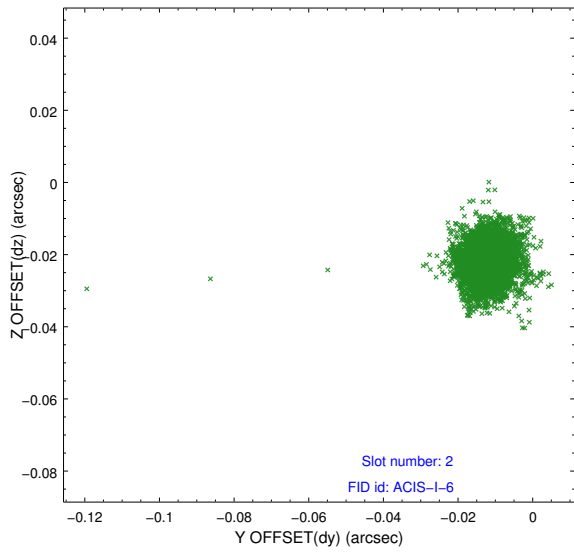
2.5.1 Slot 0



2.5.2 Slot 1



2.5.3 Slot 2



A Summary

A.1 Status

V&V Scientist	Beth Sundheim
V&V Date (YYYY-MM-DD)	2012.10.19
V&V Edition	1
V&V Disposition and Status	OK
V&V Charge Time	17.149

A.2 Comments