

V&V Reference Report

L2 ASCDS Version : 8.4.5

Observation 3479 - L2 Version 3
Chandra X-Ray Center

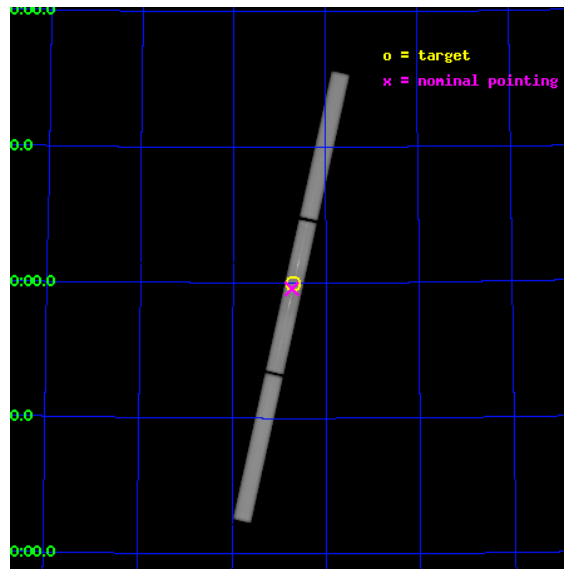
L2 Processing Date : Oct 15 2012

Contents

1	Front	2
2	OBI	3
2.1	OBI	3
2.1.1	Images	3
2.1.2	Parameters	4
2.1.3	Events	4
2.2	Compared Parameters	5
2.3	Aspect	6
2.4	Star Slots	9
2.4.1	Slot 3	9
2.4.2	Slot 4	10
2.4.3	Slot 5	11
2.4.4	Slot 6	12
2.4.5	Slot 7	13
2.5	FID Slots	14
2.5.1	Slot 0	14
2.5.2	Slot 1	15
2.5.3	Slot 2	16
3	Gratings	17
3.1	LETG Arm	17
A	Summary	19
A.1	Status	19
A.2	Comments	19

1 Front

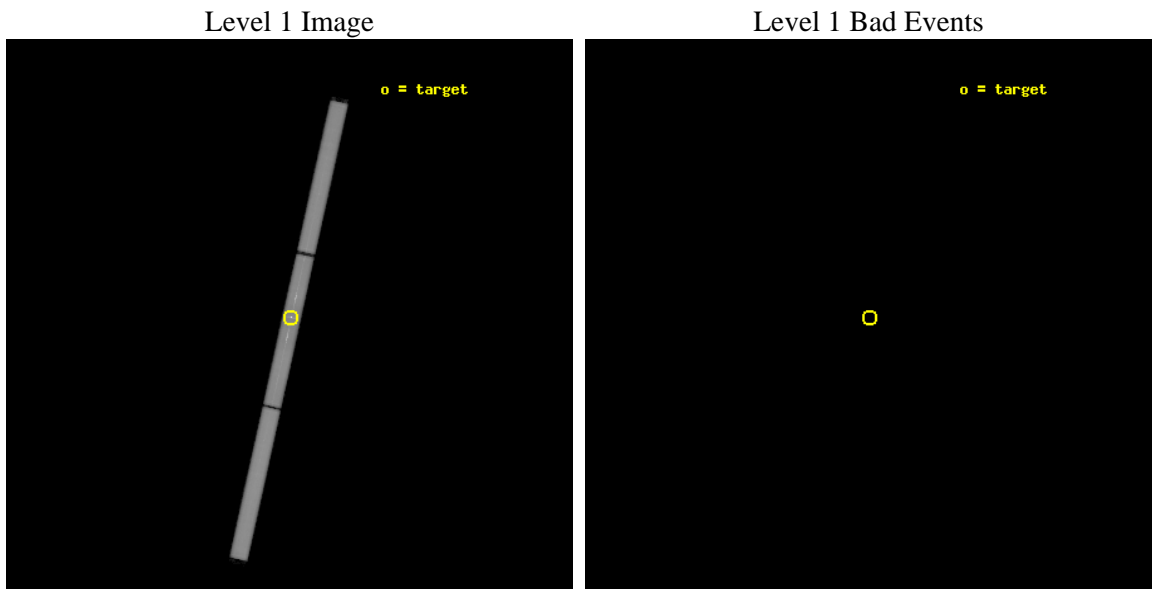
seq_num	290227	Sequence number
obs_id	3479	Observation id
title	SUPPLEMENTAL CALIBRATION OBSERVATIONS OF CAPELLA	Proposal title
observer	Dr. CXC Calibration	Principal investigator
object	CAPELLA	Source name
ra_targ	79.17625	Observer's specified target RA [deg]
dec_targ	45.997889	Observer's specified target Dec [deg]
ra_nom	79.182742020345	Nominal RA [deg]
dec_nom	45.978086954423	Nominal Dec [deg]
roll_nom	102.50906686147	Nominal Roll [deg]
revision	3	Processing version of data
ontime	30379.207508385	[s]
livetime	27449.40852818	Ontime multiplied by DTCOR
l2events	3428824	Number of level 2 events



2 OBI

2.1 OBI

2.1.1 Images



2.1.2 Parameters

obi_num	4	Obi number	sched_exp_time	30218.546000	[s] Scheduled observation exposure time
ascdsver	8.4.5	Processing system revision	ontime	30379.207508385	[s]
caldbver	4.5.2	 	l1events	4101700	Number of level 1 events
date	2012-10-15T13:20:55	Date and time of file creation			
revision	3	Processing version of data			

2.1.3 Events

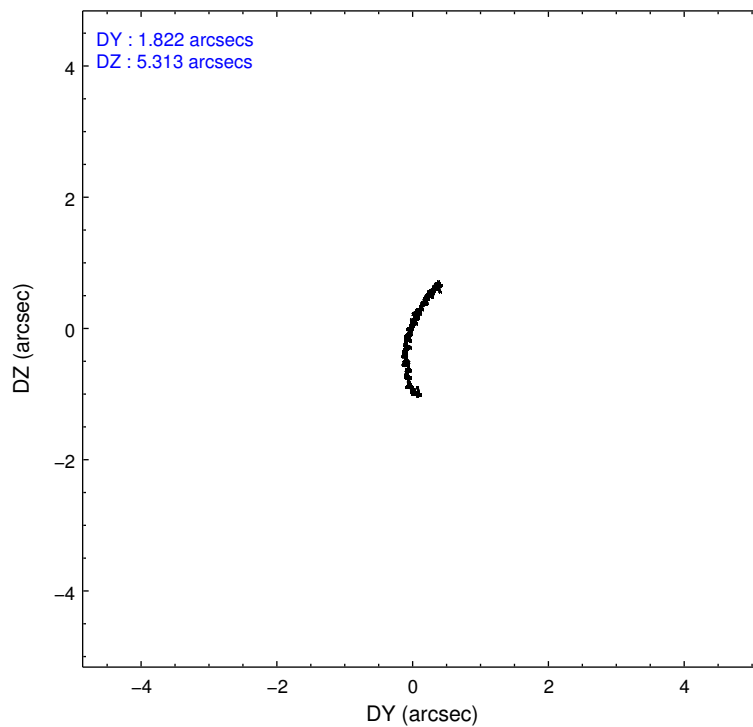
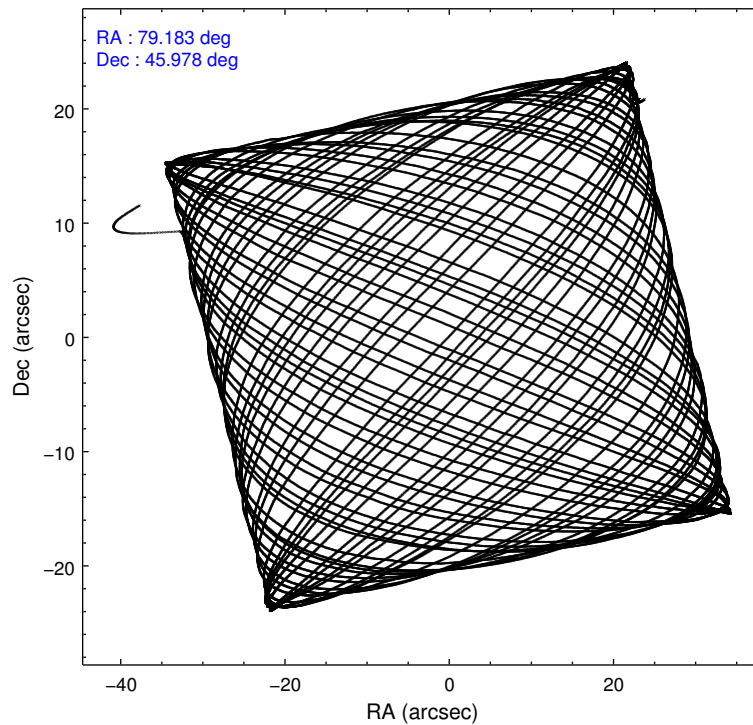
Level 1 Events

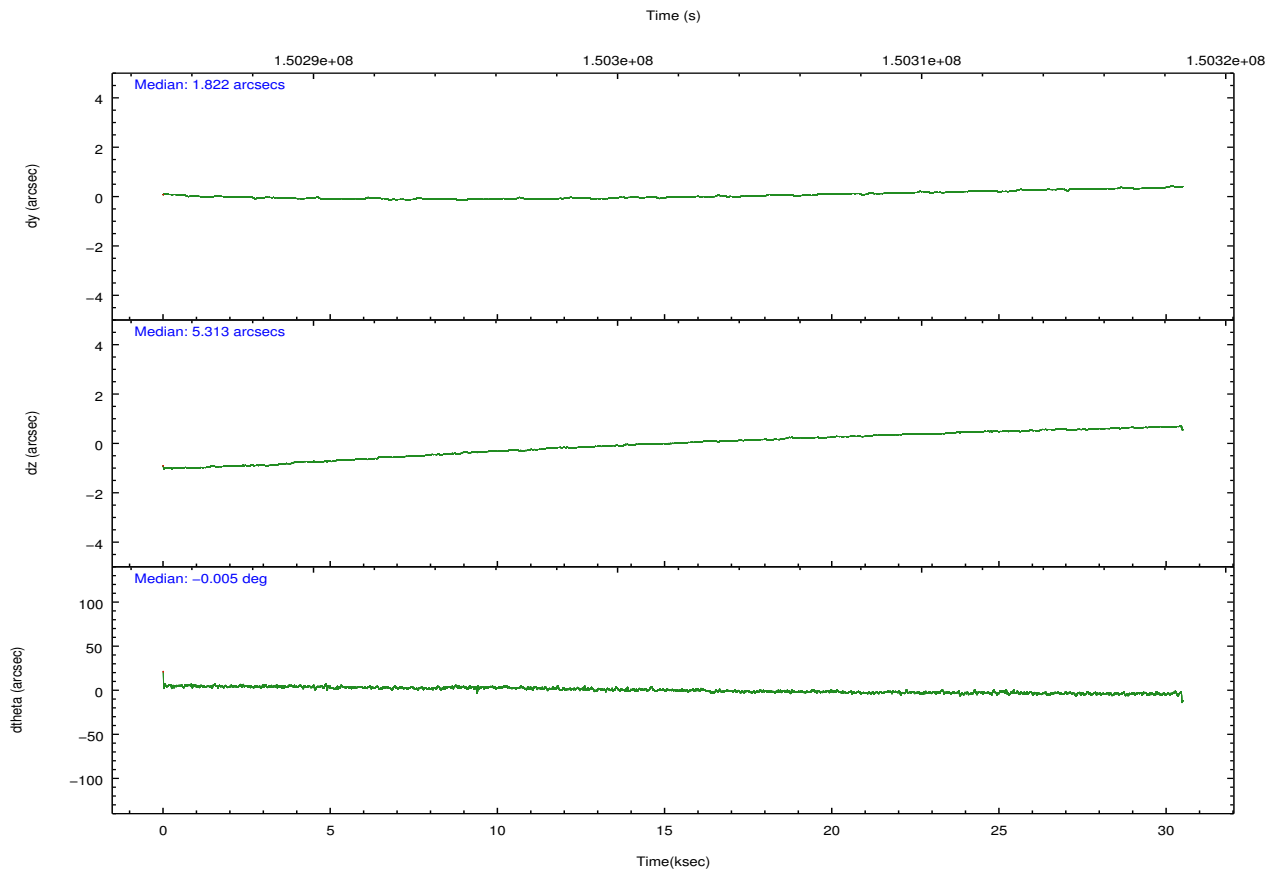
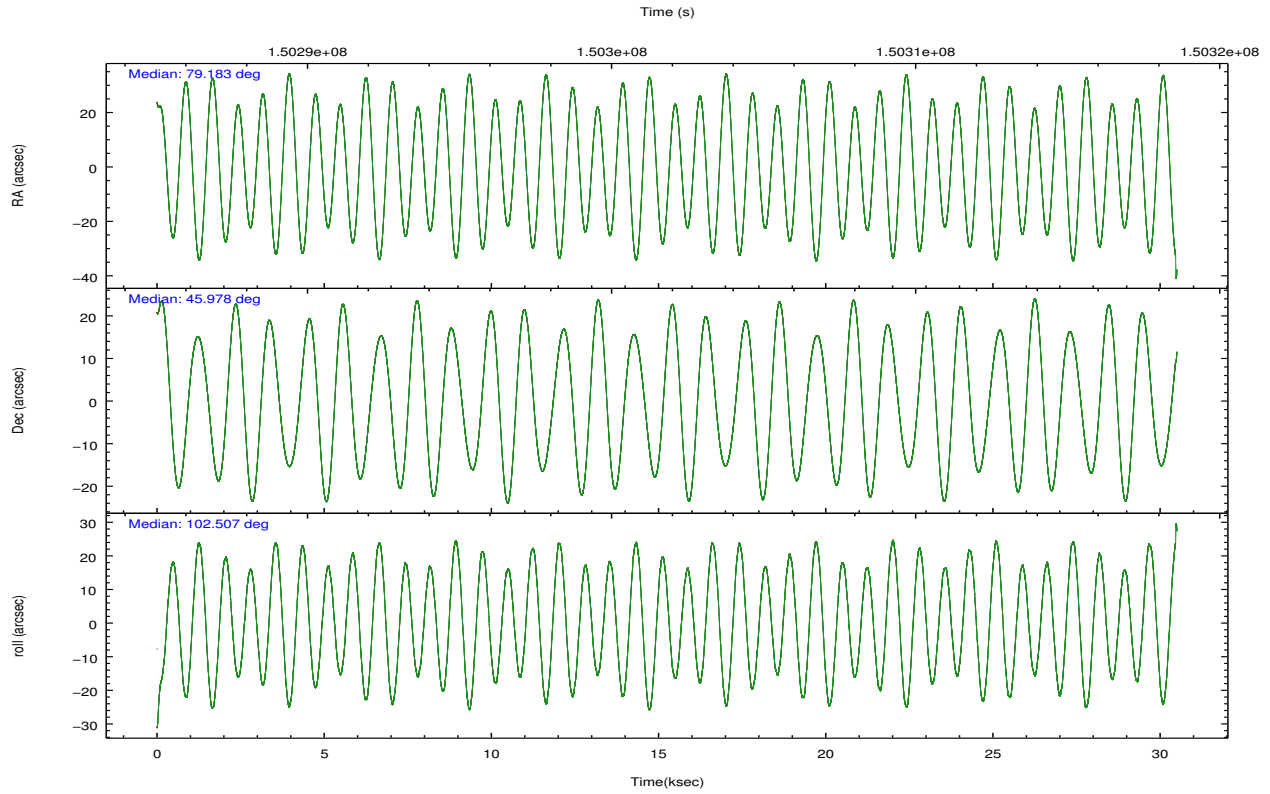
	segment 1	segment 2	segment 3
level 1 events	1456847	1366857	1277996
rejected events	30286	28537	27411
rejected %	2%	2%	2%

2.2 Compared Parameters

Parameter	Planned	Actual	Parameter	Planned	Actual
Instrument	HRC	HRC	Obspar format version number	7	7
Detector	HRC-S	HRC-S	Obspar file type	PREDICTED	ACTUAL
Grating	LETG	LETG	Obspar update status	NONE	UPDATED
Data mode	OBSERVING	OBSERVING			
Observation mode	POINTING	POINTING			
[deg] Pointing RA	79.212006	79.18274202034526			
[deg] Pointing Dec	45.957965	45.97808695442328			
[deg] Pointing Roll	102.420695	102.509066861474			
[mm] SIM focus pos	-1.429586	-1.428180813131781			
[mm] SIM defocus	0.1037507710433287	0.1051558262725154			
[mm] SIM translation stage pos	250.455976	250.466033080201			
[mm] SIM translation stage offset	0	-0.01005468664627074			
[s] Observation start time (MET)	150286740.184000	150285782.24339			
Observation start date	2002-10-06T10:17:56	2002-10-06T10:03:02			
[s] Observation end time (MET)	150316959.184000	150318609.91975			
Observation end date	2002-10-06T18:41:35	2002-10-06T19:10:09			

2.3 Aspect



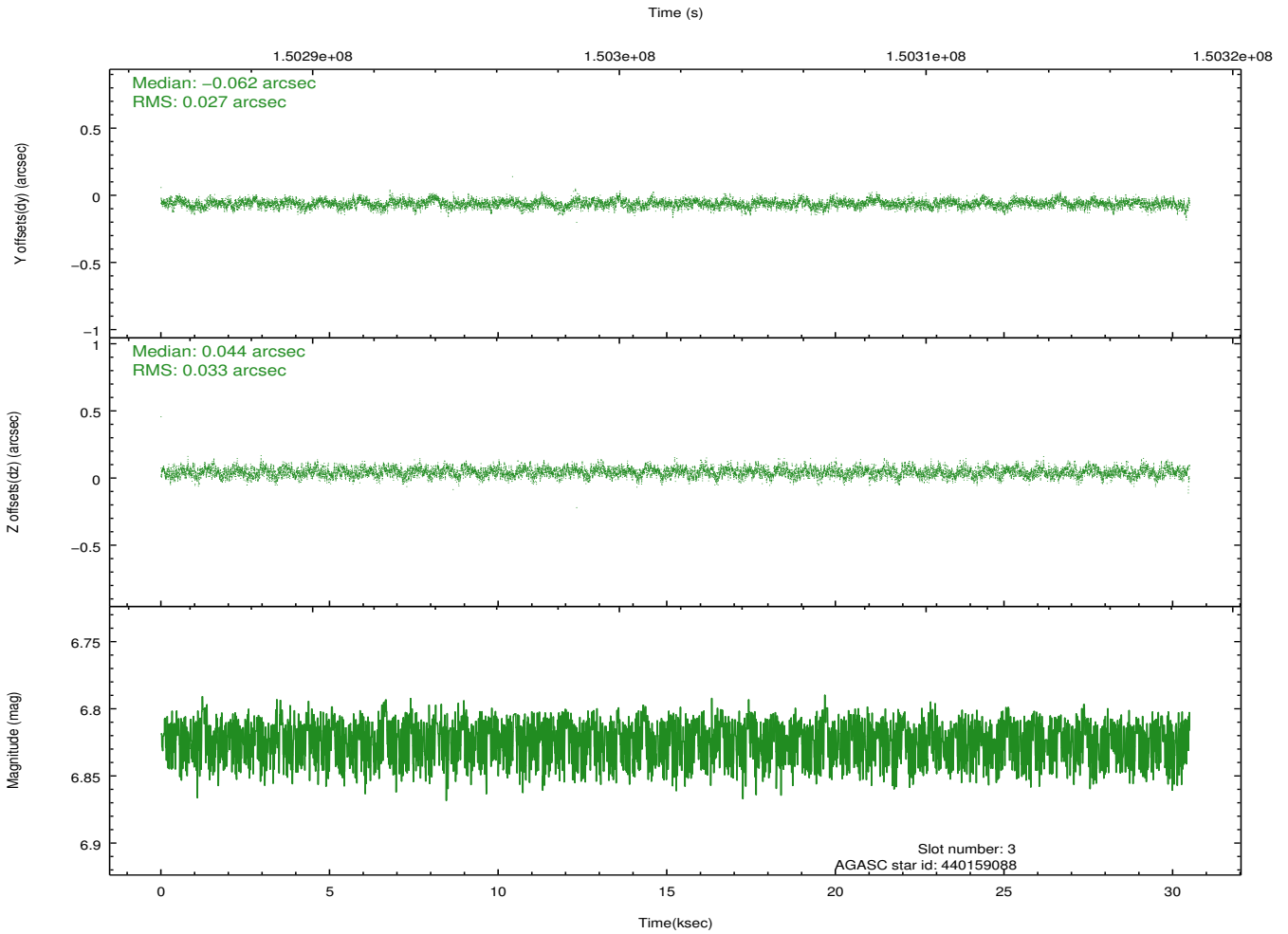
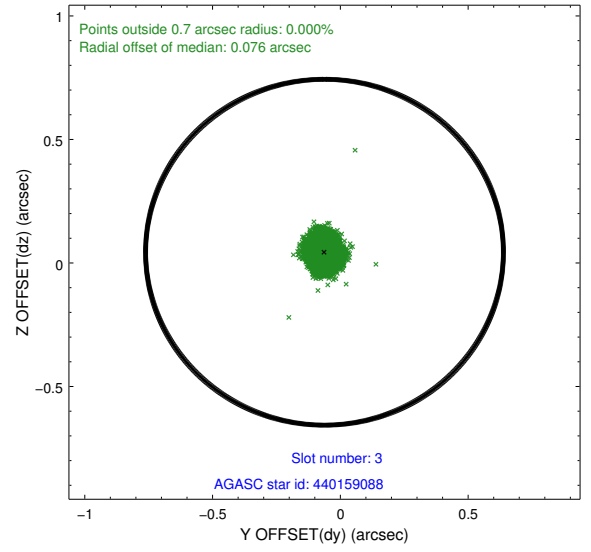
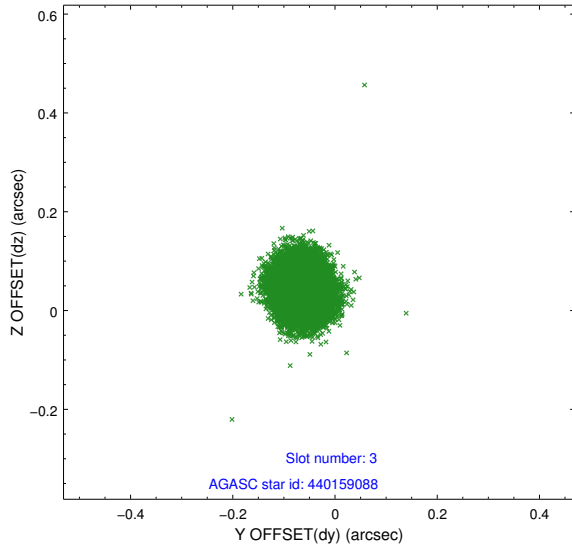


Slot Statistics

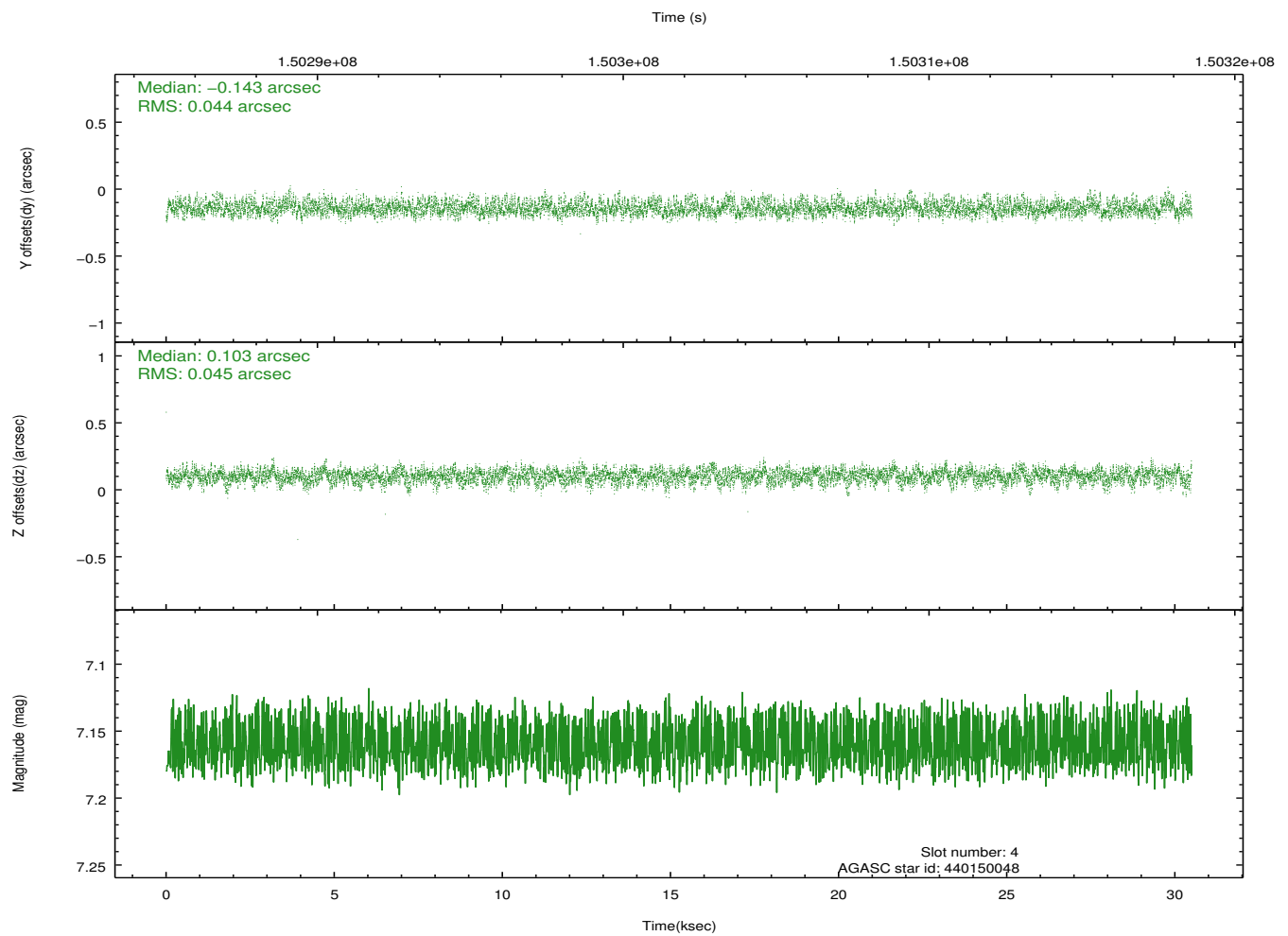
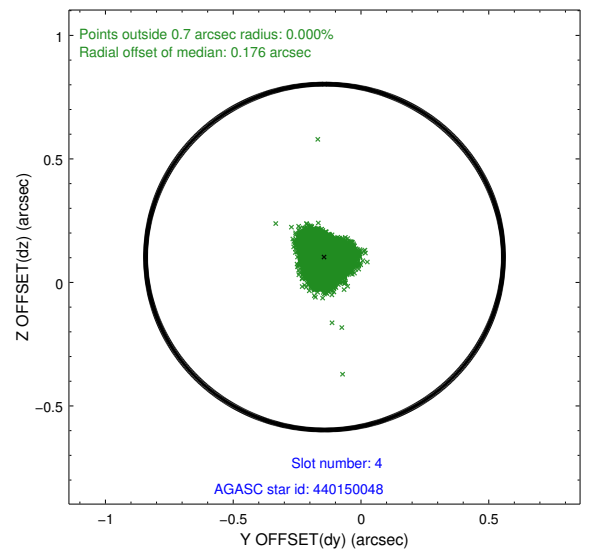
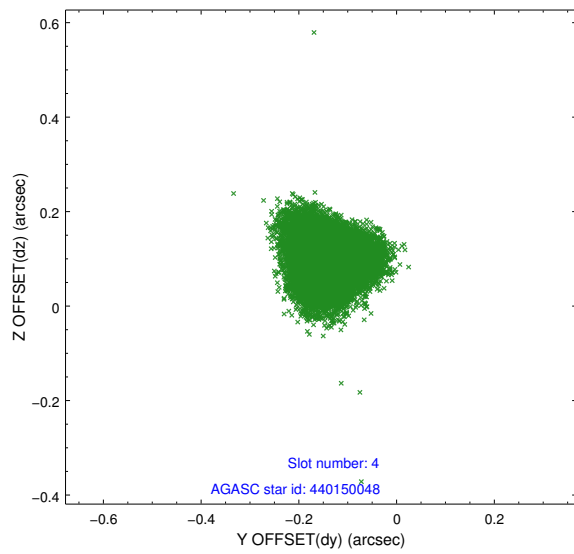
slot	status	id	mag	n_pts	med_dy	med_dz	dr1	dr2	ra	dec	mean_y	mean_z
0	FID	HRC-S-1	7.00	7434	0.108	-0.163	0.018	0.027	0.000000	0.000000	-1155.91	-453.80
1	FID	HRC-S-3	7.01	7430	0.143	-0.043	0.015	0.026	0.000000	0.000000	-1158.77	575.78
2	FID	HRC-S-4	6.94	7429	0.136	-0.091	0.013	0.027	0.000000	0.000000	1242.21	578.48
3	GUIDE	440159088	6.82	14876	-0.062	0.044	0.045	0.073	79.453034	46.128063	468.59	-718.71
4	GUIDE	440150048	7.16	14876	-0.143	0.103	0.068	0.105	79.112838	46.416060	1662.59	-113.84
5	GUIDE	440158344	7.92	14876	0.140	-0.154	0.058	0.092	79.344888	45.394991	-2052.13	107.93
6	GUIDE	438437960	8.52	14874	-0.045	-0.153	0.057	0.092	78.069023	46.438843	2319.44	2392.95
7	GUIDE	440145944	9.09	14872	0.112	0.161	0.077	0.126	80.083717	45.428844	-2322.87	-1743.09

2.4 Star Slots

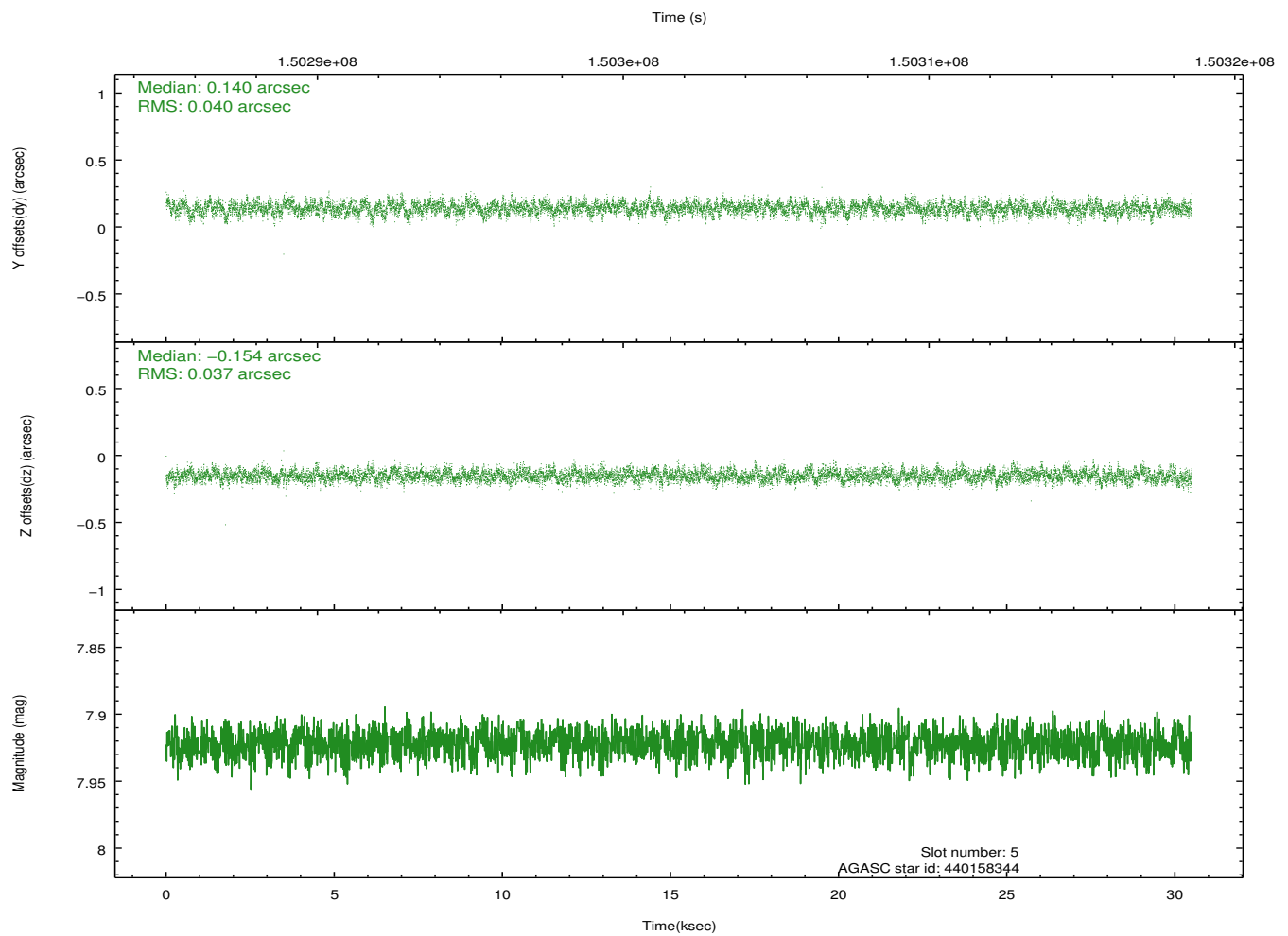
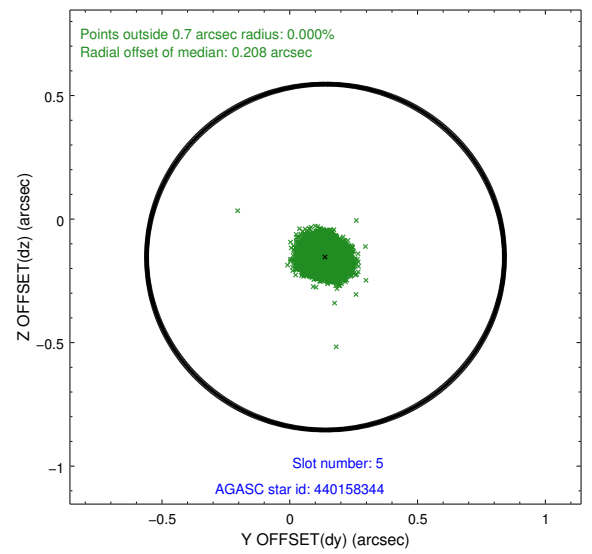
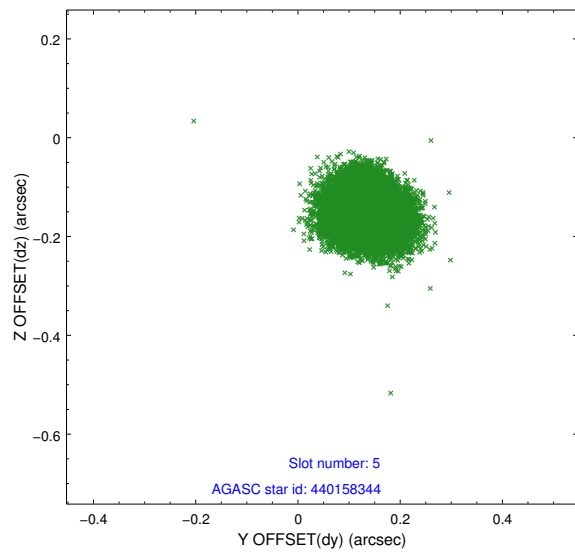
2.4.1 Slot 3



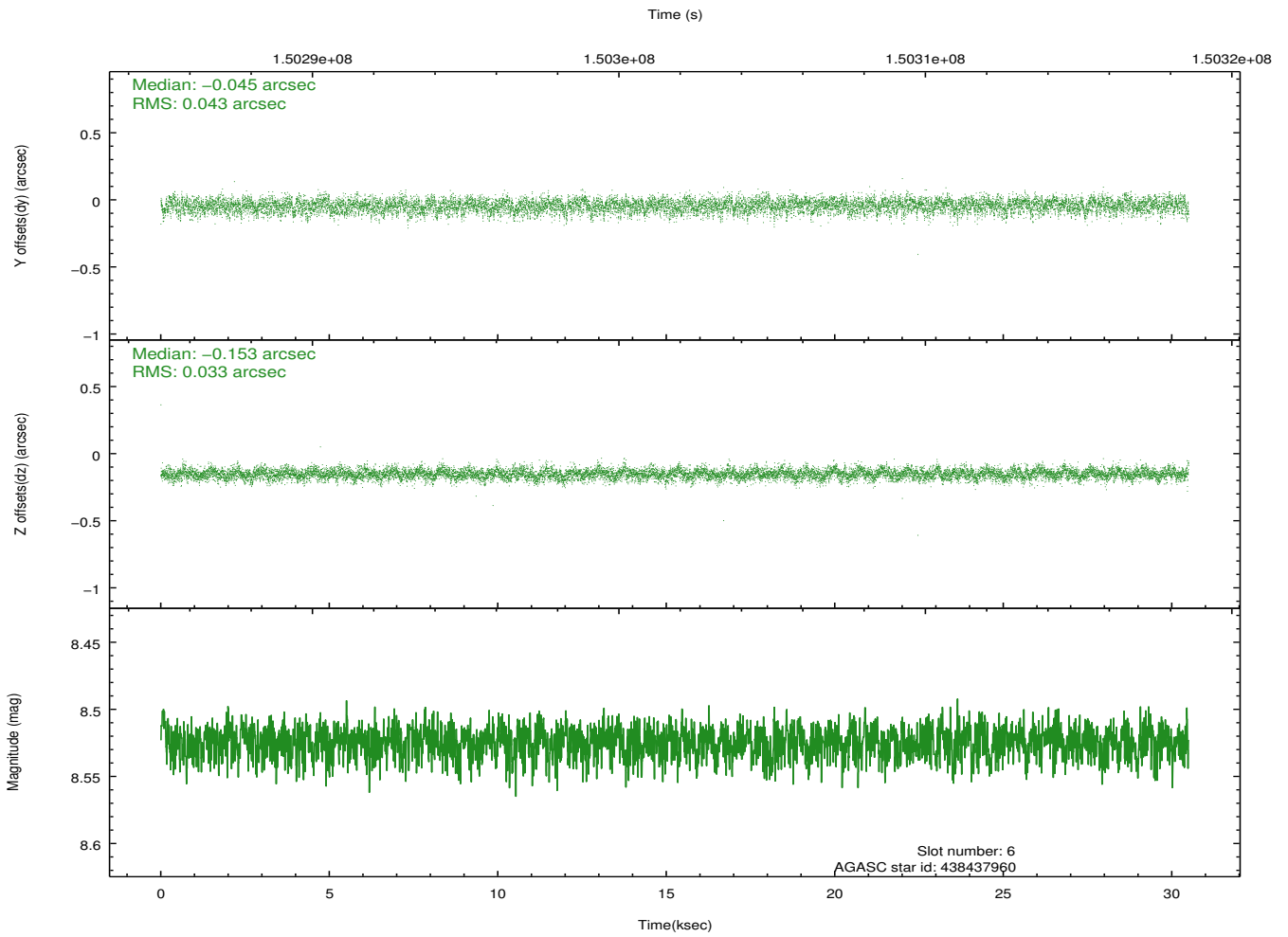
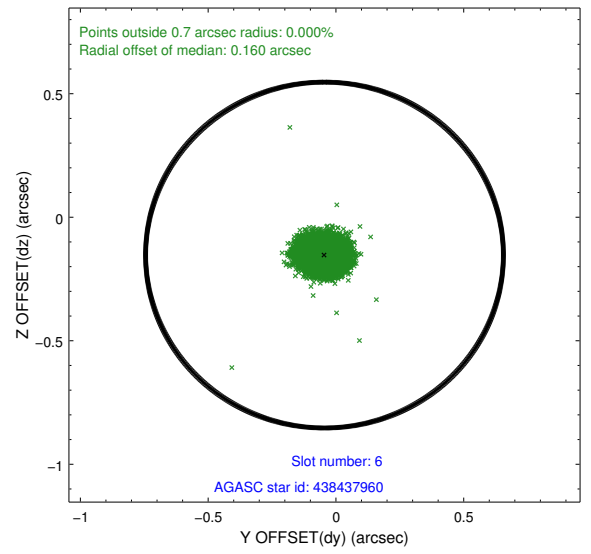
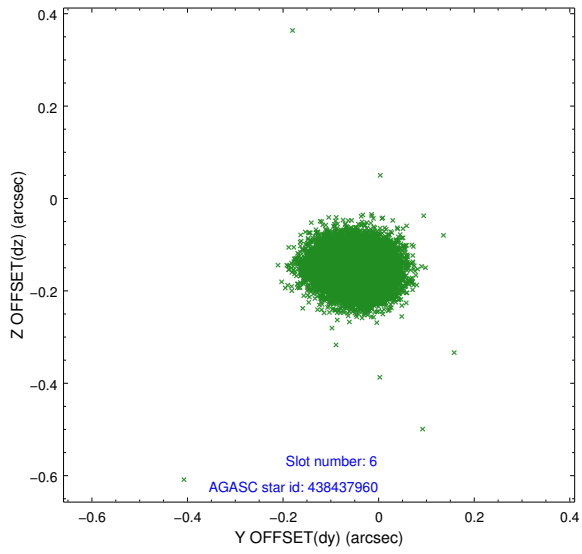
2.4.2 Slot 4



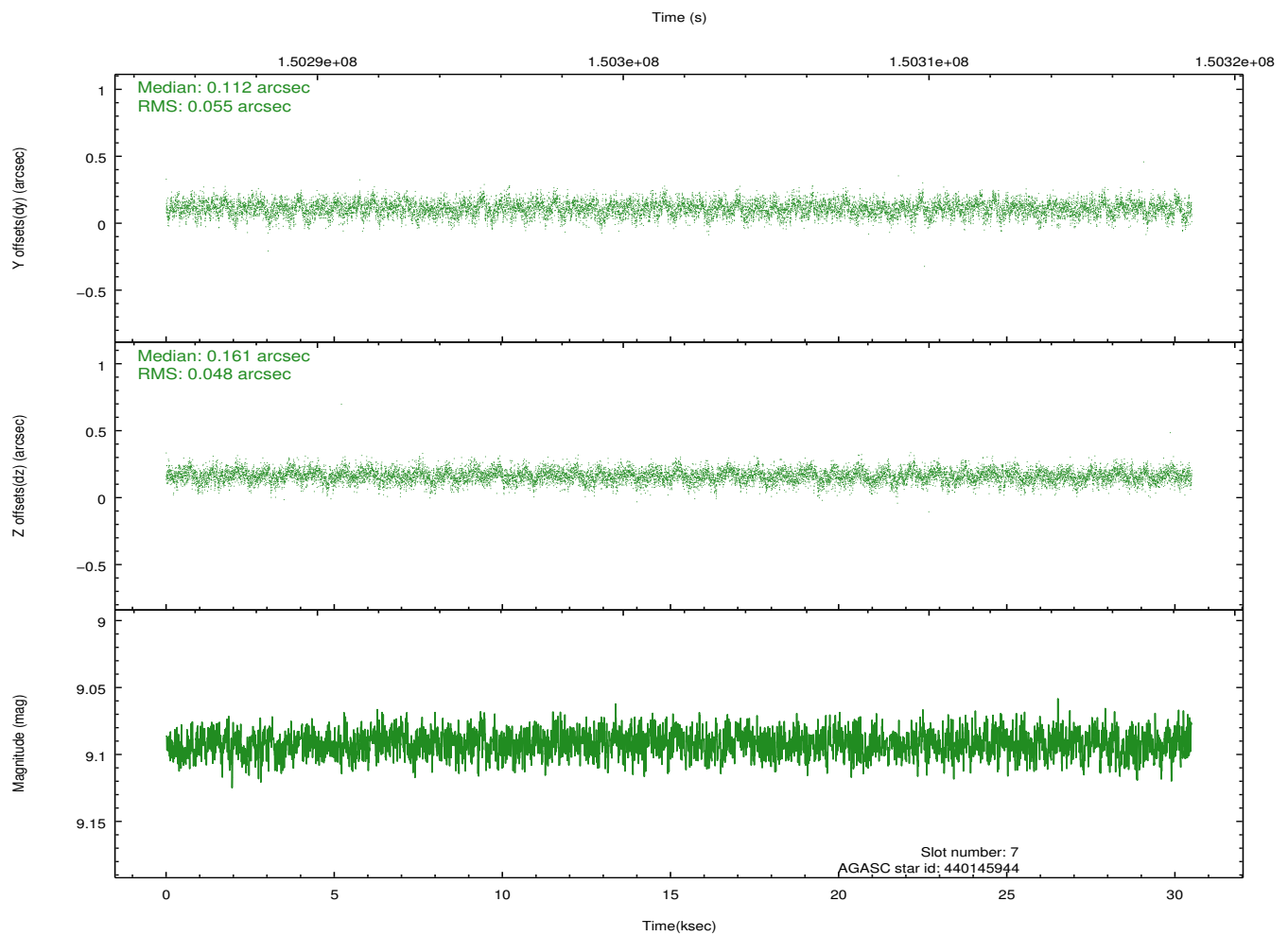
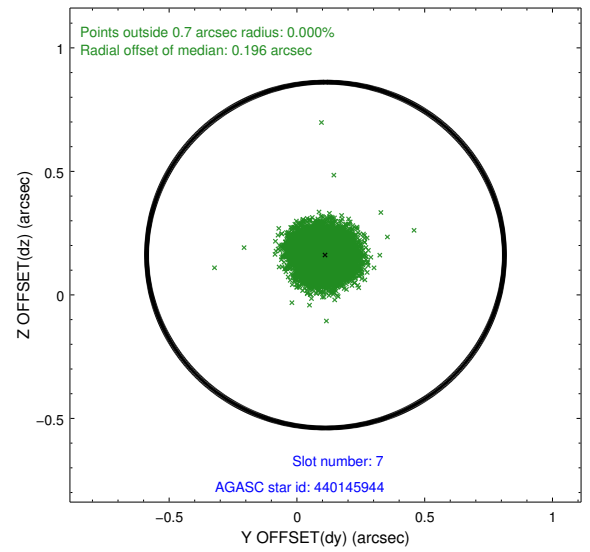
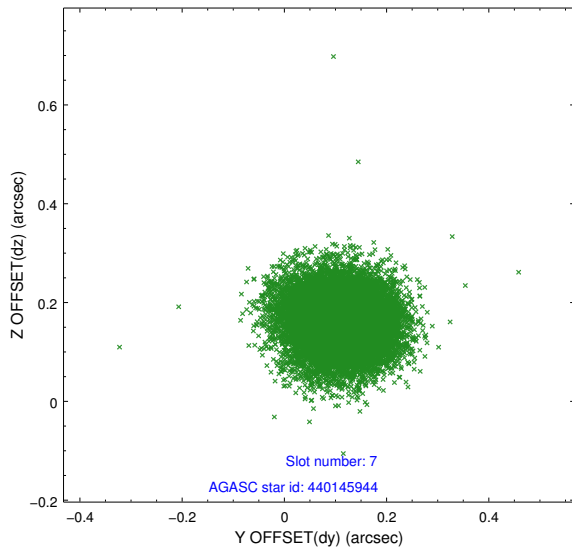
2.4.3 Slot 5



2.4.4 Slot 6

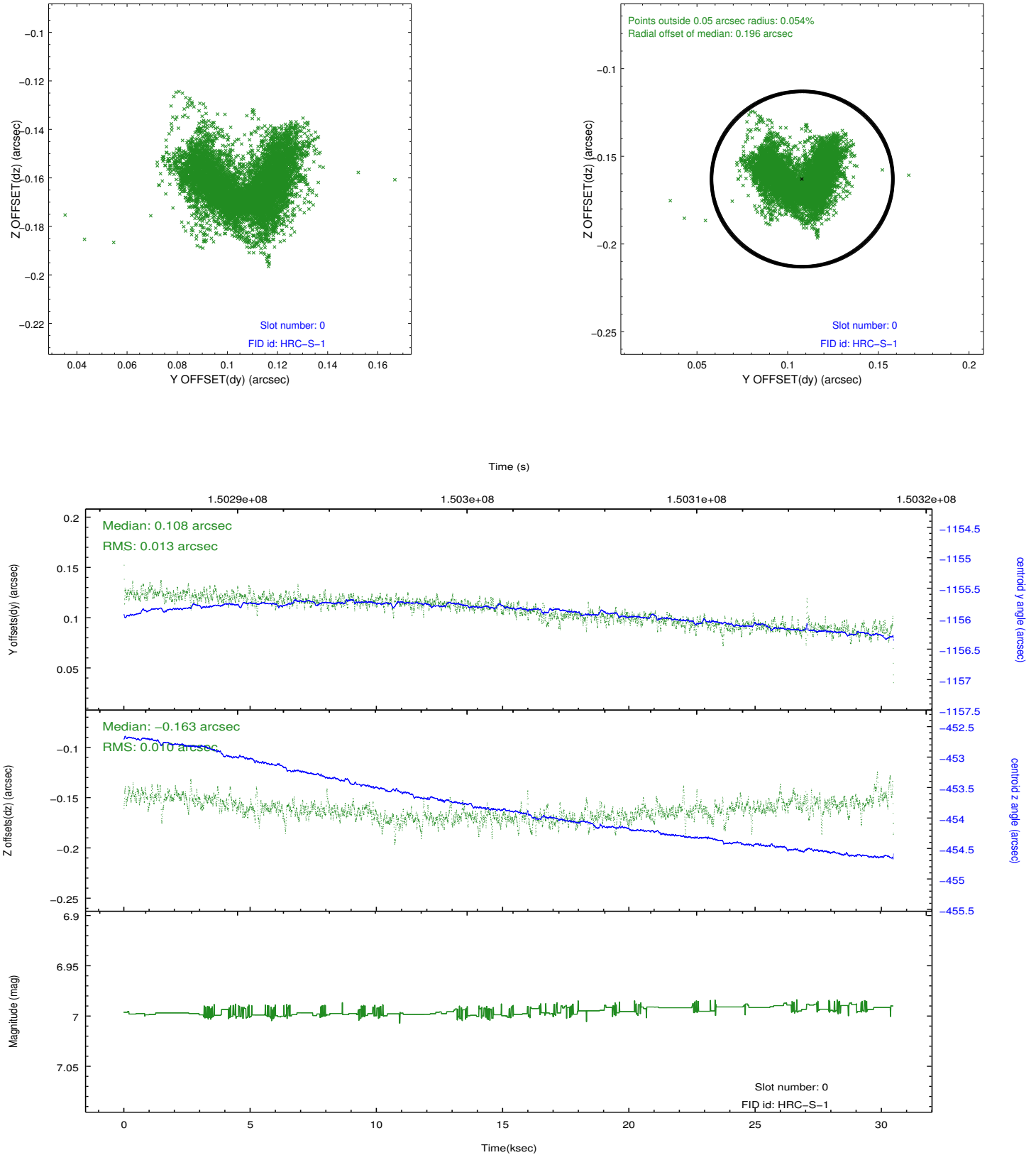


2.4.5 Slot 7

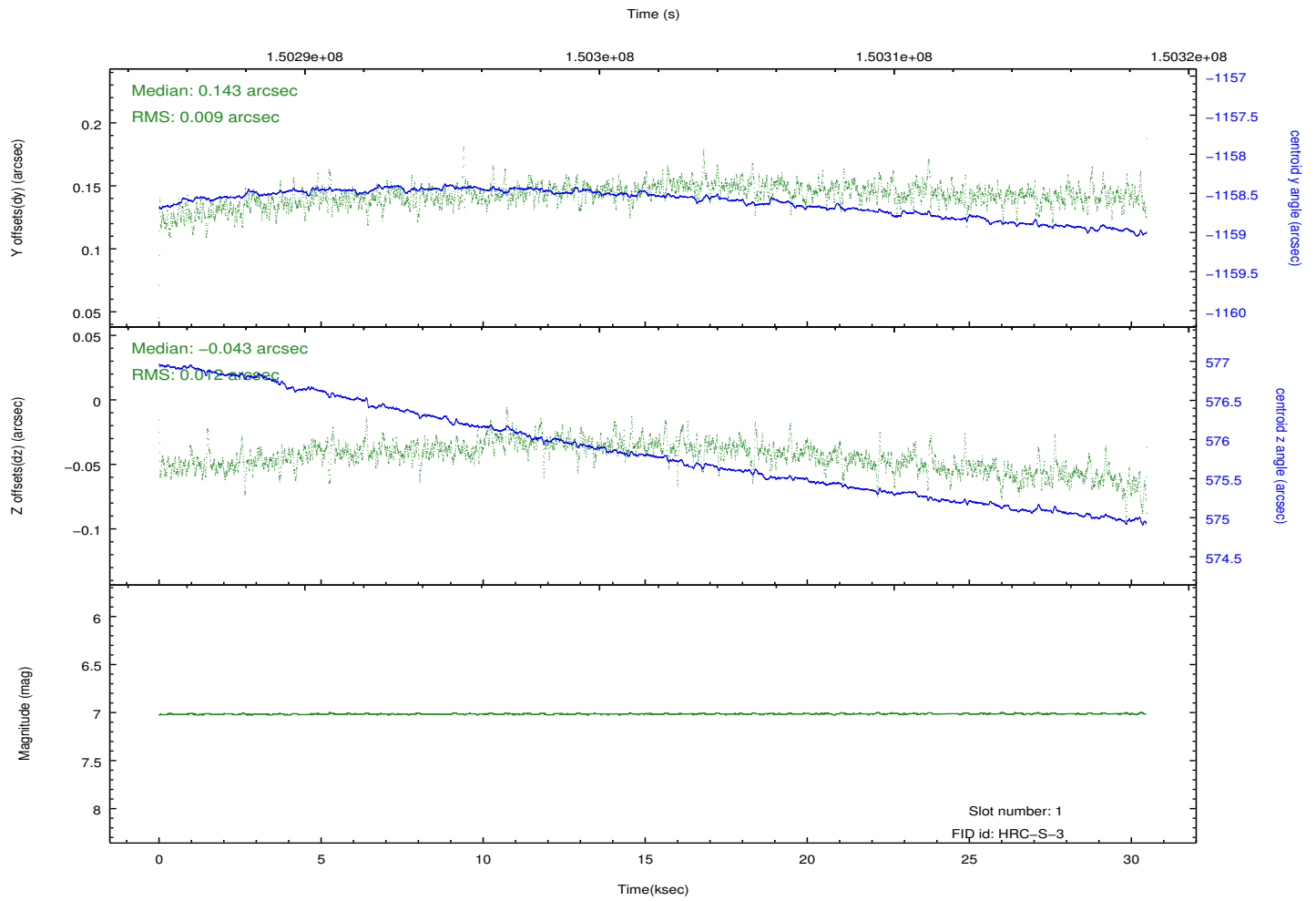
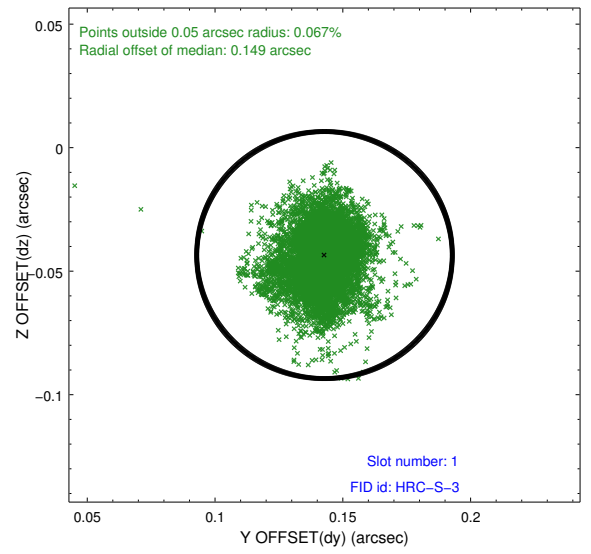
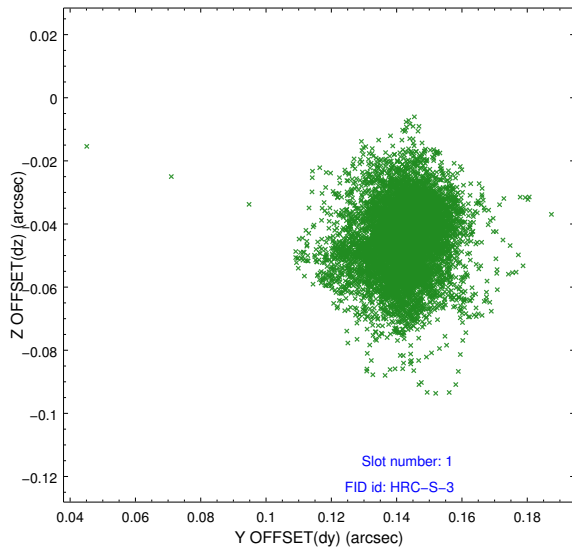


2.5 FID Slots

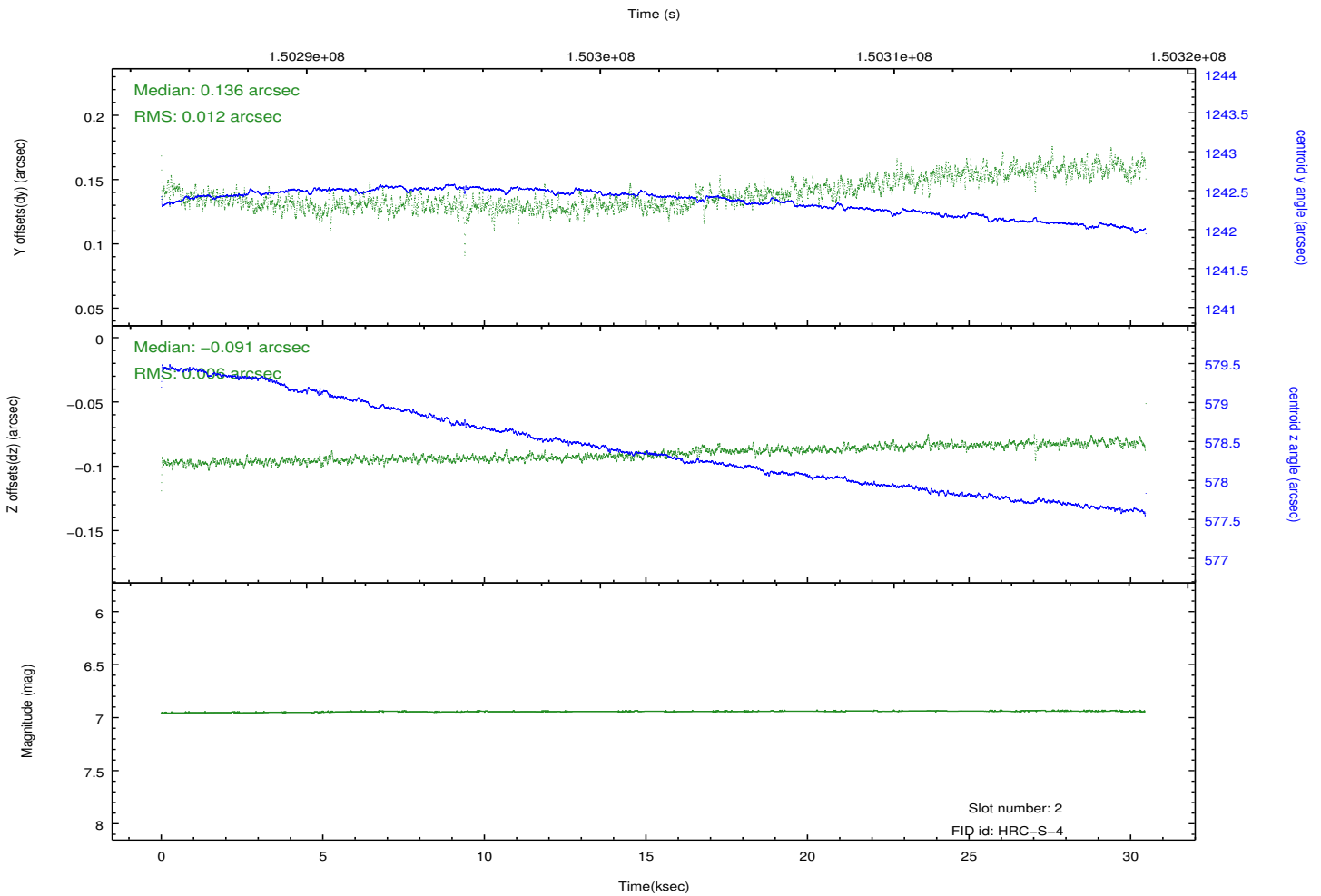
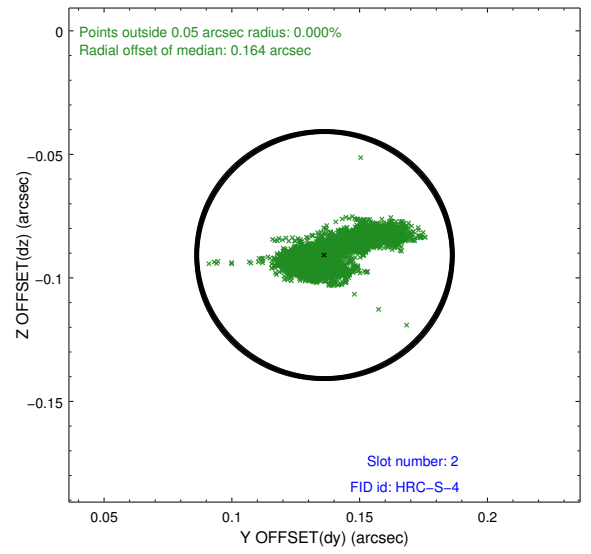
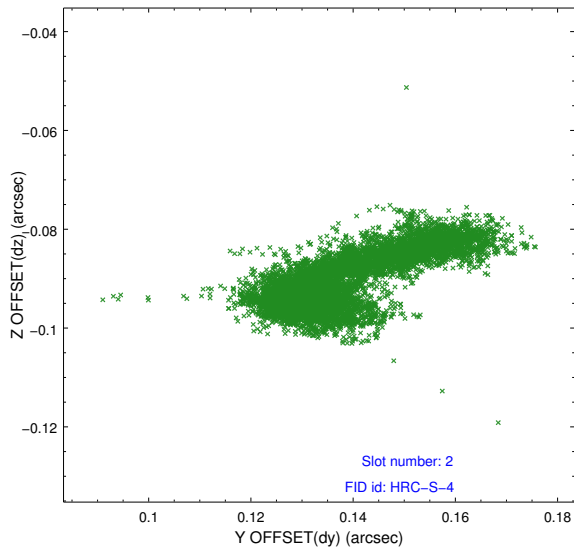
2.5.1 Slot 0



2.5.2 Slot 1

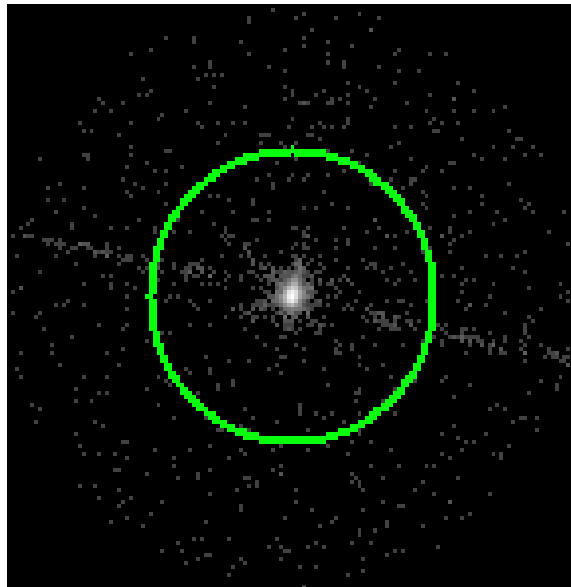


2.5.3 Slot 2

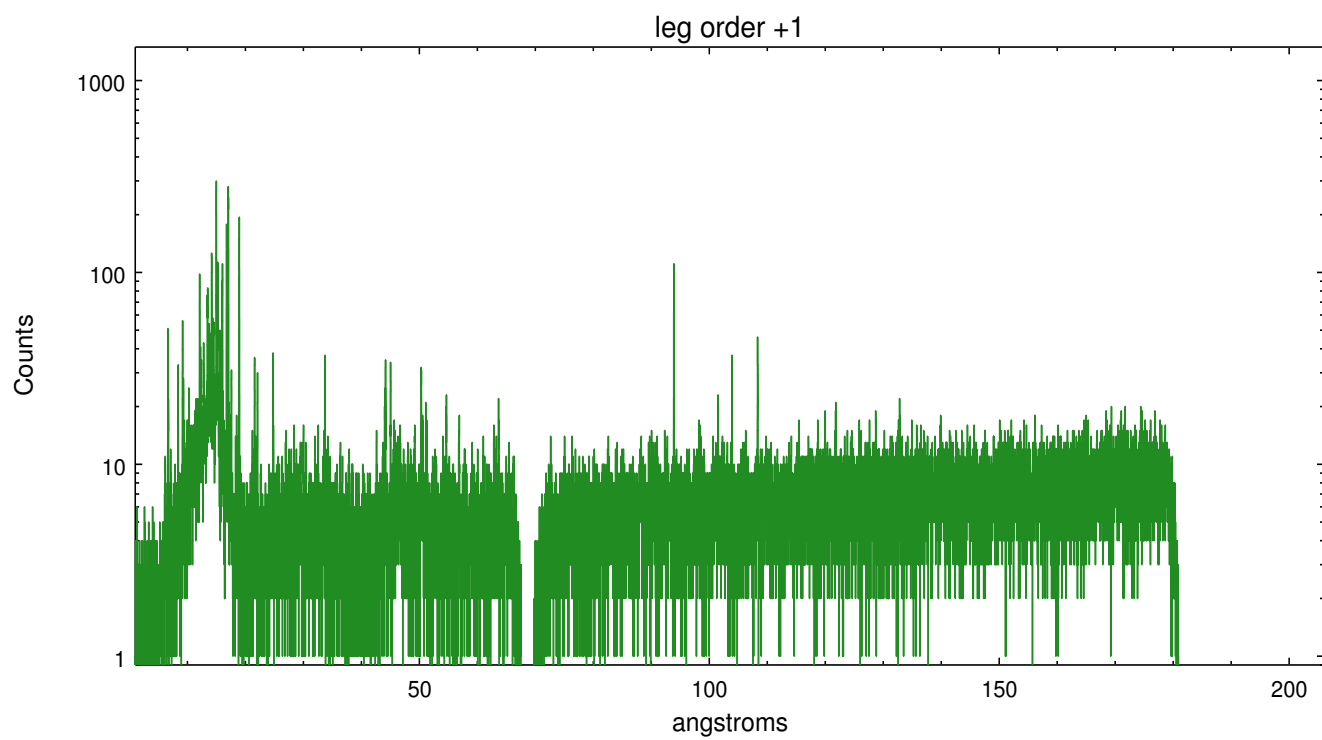
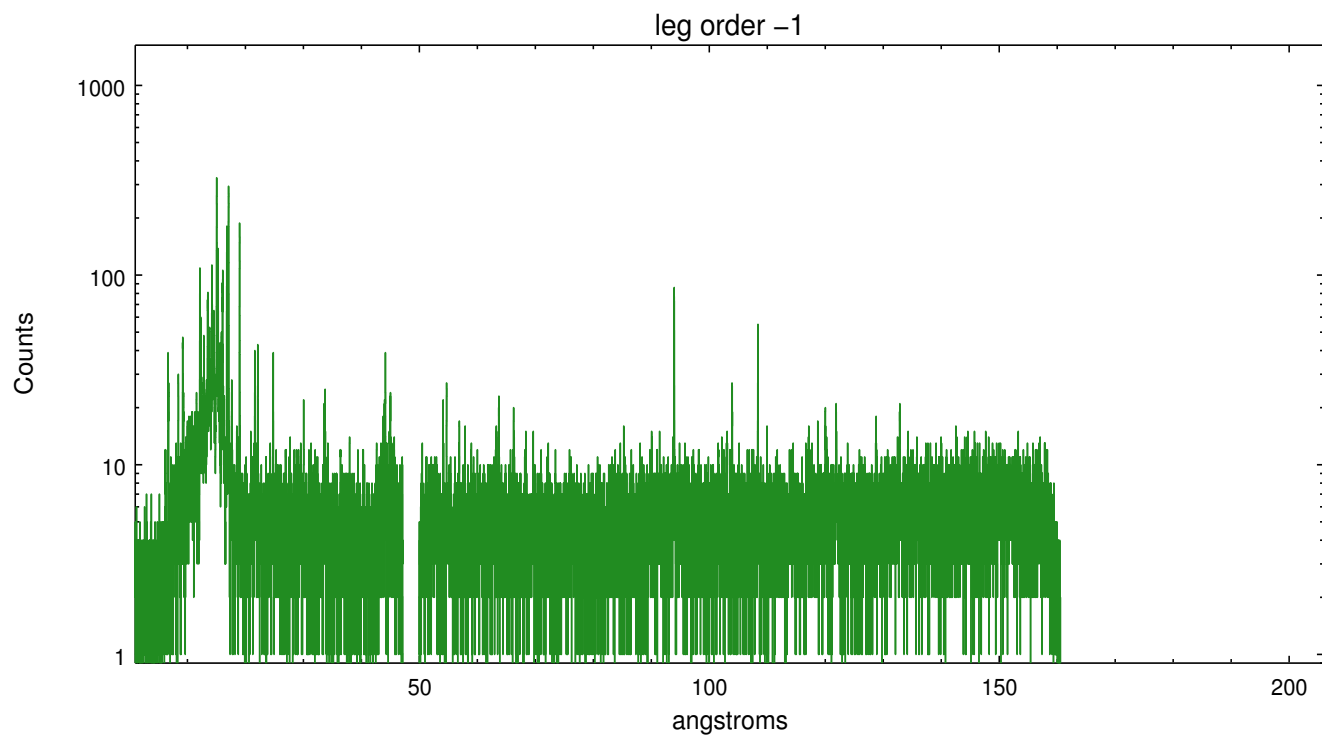


3 Gratings

3.1 LETG Arm



LETG Zero Order



A Summary

A.1 Status

V&V Scientist	Joy Nichols
V&V Date (YYYY-MM-DD)	2012.10.26
V&V Edition	1
V&V Disposition and Status	OK
V&V Charge Time	30.379

A.2 Comments

High radiation environment during last approximately 3 ks of this observation resulted in a saturated count rate during this period. The DTF reflects this situation.