

# V&V Reference Report

## L2 ASCDS Version : 8.4.5

Observation 3509 - L2 Version 3  
Chandra X-Ray Center

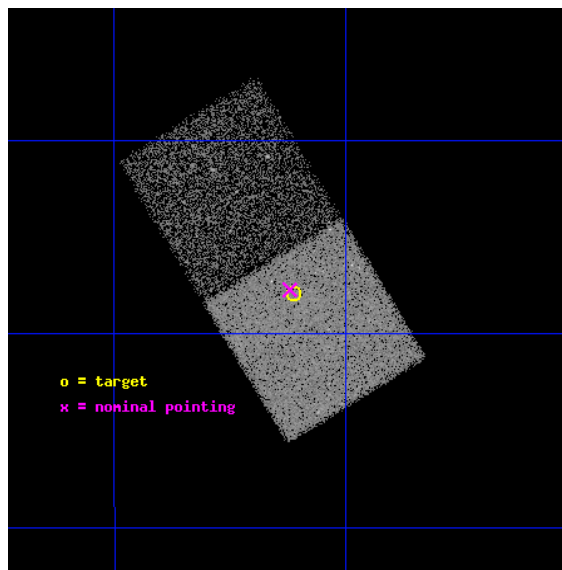
L2 Processing Date : Oct 29 2012

## Contents

<b>1</b>	<b>Front</b>	<b>2</b>
<b>2</b>	<b>OBI</b>	<b>3</b>
2.1	OBI . . . . .	3
2.1.1	Images . . . . .	3
2.1.2	Bias . . . . .	3
2.1.3	Parameters . . . . .	4
2.1.4	Events . . . . .	4
2.2	Compared Parameters . . . . .	5
2.3	Aspect . . . . .	6
2.4	Star Slots . . . . .	9
2.4.1	Slot 3 . . . . .	9
2.4.2	Slot 4 . . . . .	10
2.4.3	Slot 5 . . . . .	11
2.4.4	Slot 6 . . . . .	12
2.4.5	Slot 7 . . . . .	13
2.5	FID Slots . . . . .	14
2.5.1	Slot 0 . . . . .	14
2.5.2	Slot 1 . . . . .	15
2.5.3	Slot 2 . . . . .	16
<b>A</b>	<b>Summary</b>	<b>17</b>
A.1	Status . . . . .	17
A.2	Comments . . . . .	17

# 1 Front

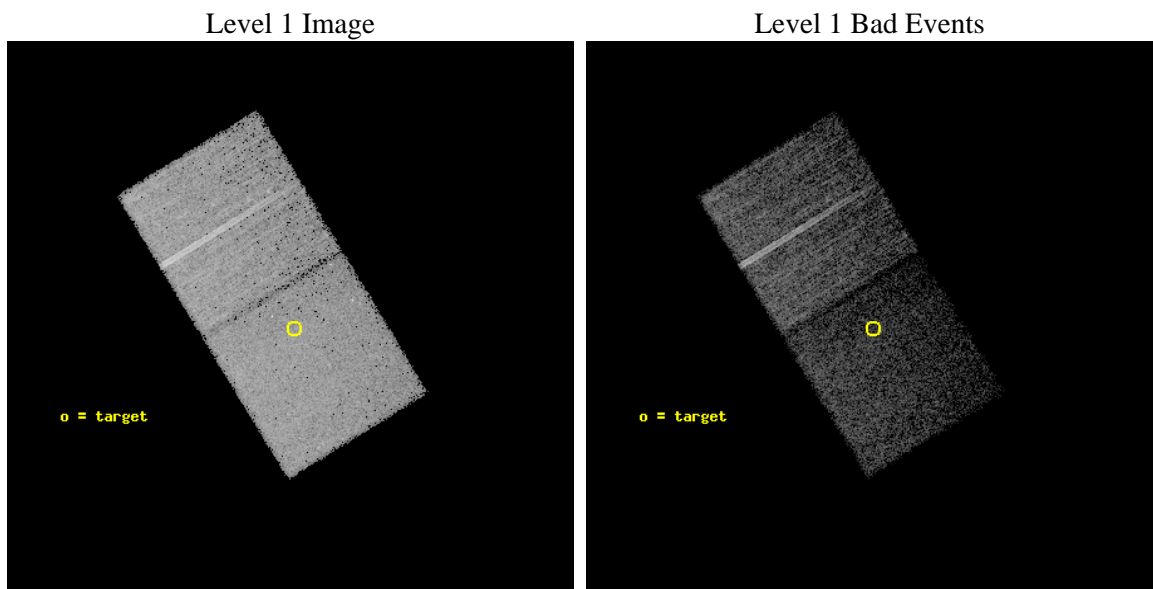
seq_num	400262	Sequence number
obs_id	3509	Observation id
title	NEUTRON STARS IN QUIESCENCE	Proposal title
observer	Dr. Stephen Murray	Principal investigator
object	A1744-361	Source name
dtcycle	0	&#160
cycle	P	events from which exps? Prim/Second/Both
ra_targ	267.055833	Observer's specified target RA [deg]
dec_targ	-36.131389	Observer's specified target Dec [deg]
ra_nom	267.06021220411	Nominal RA [deg]
dec_nom	-36.128848125939	Nominal Dec [deg]
roll_nom	58.550173543925	Nominal Roll [deg]
revision	3	Processing version of data
ontime	16010.617694944	Sum of GTIs [s]
livetime	15794.548274548	Livetime [s]
ontime6	16007.535674691	Sum of GTIs [s]
ontime7	16010.617694944	Sum of GTIs [s]
l2events	54531	Number of level 2 events



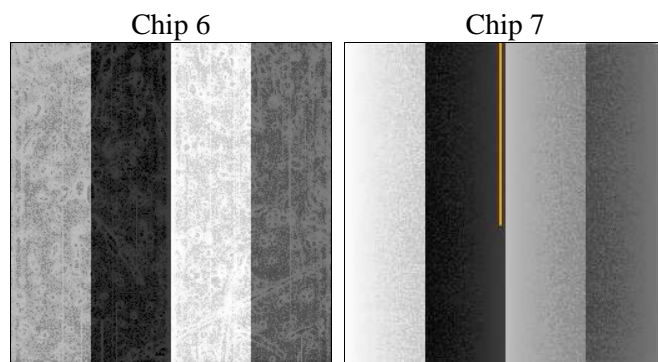
## 2 OBI

### 2.1 OBI

#### 2.1.1 Images



#### 2.1.2 Bias



### 2.1.3 Parameters

obi_num	0	Obi number	sched_exp_time	15500.000000	[s] Scheduled observation exposure time
ascdsver	8.4.5	Processing system revision	ontime	16010.617694944	Sum of GTIs [s]
caldbver	4.5.2	&#160	ontime6	16007.535674691	Sum of GTIs [s]
date	2012-10-29T04:26:43	Date and time of file creation	ontime7	16010.617694944	Sum of GTIs [s]
revision	3	Processing version of data	l1events	201109	Number of level 1 events

### 2.1.4 Events

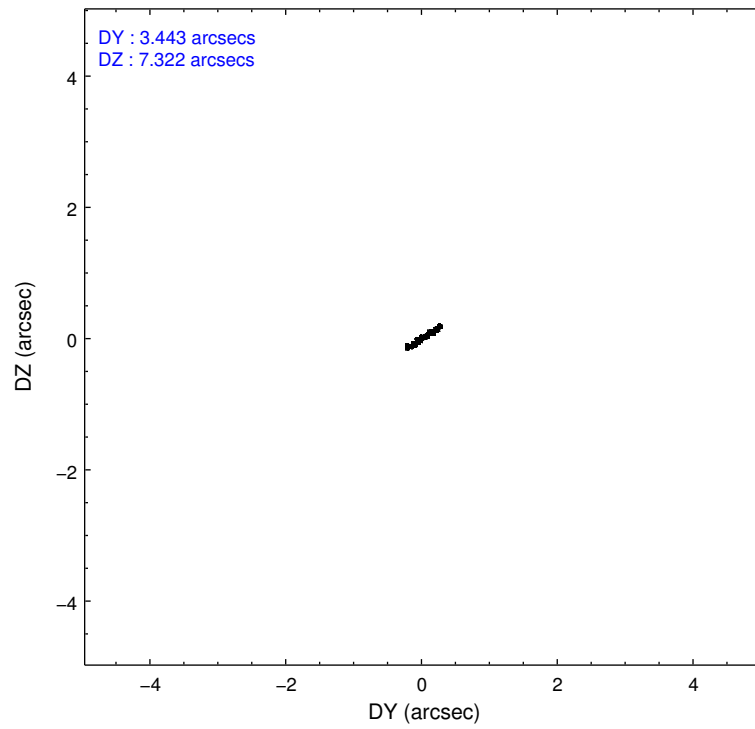
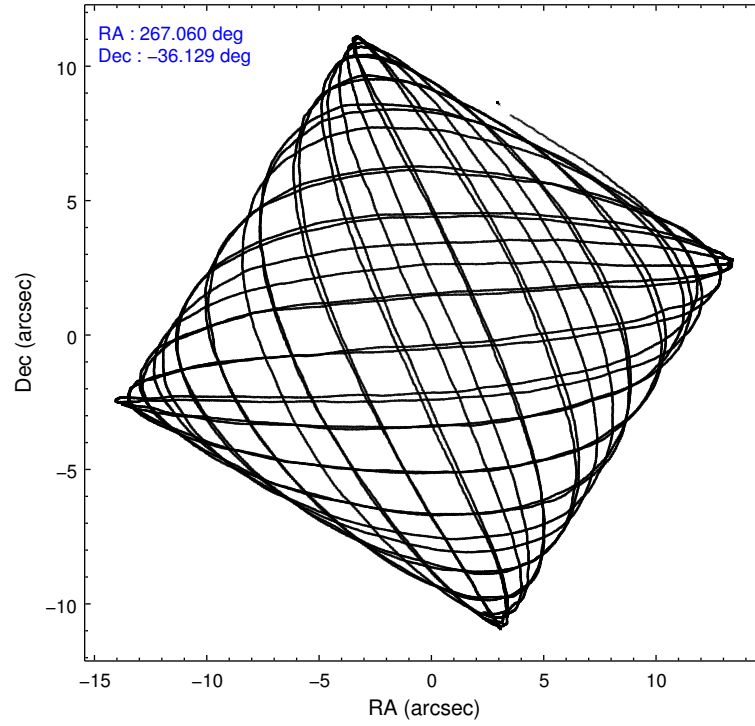
	ccd 6	ccd 7
level 1 events	104757	96352
rejected events	92483	51404
rejected %	88%	53%

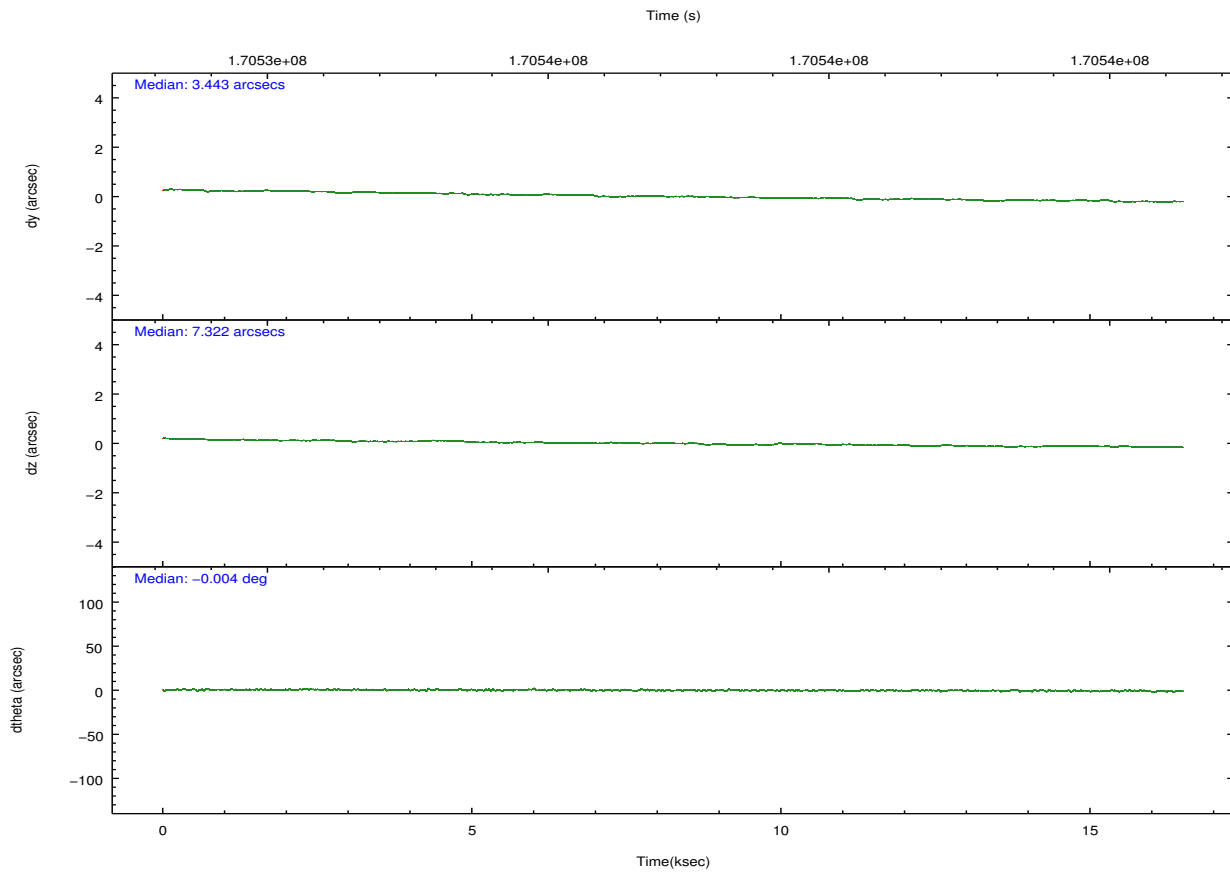
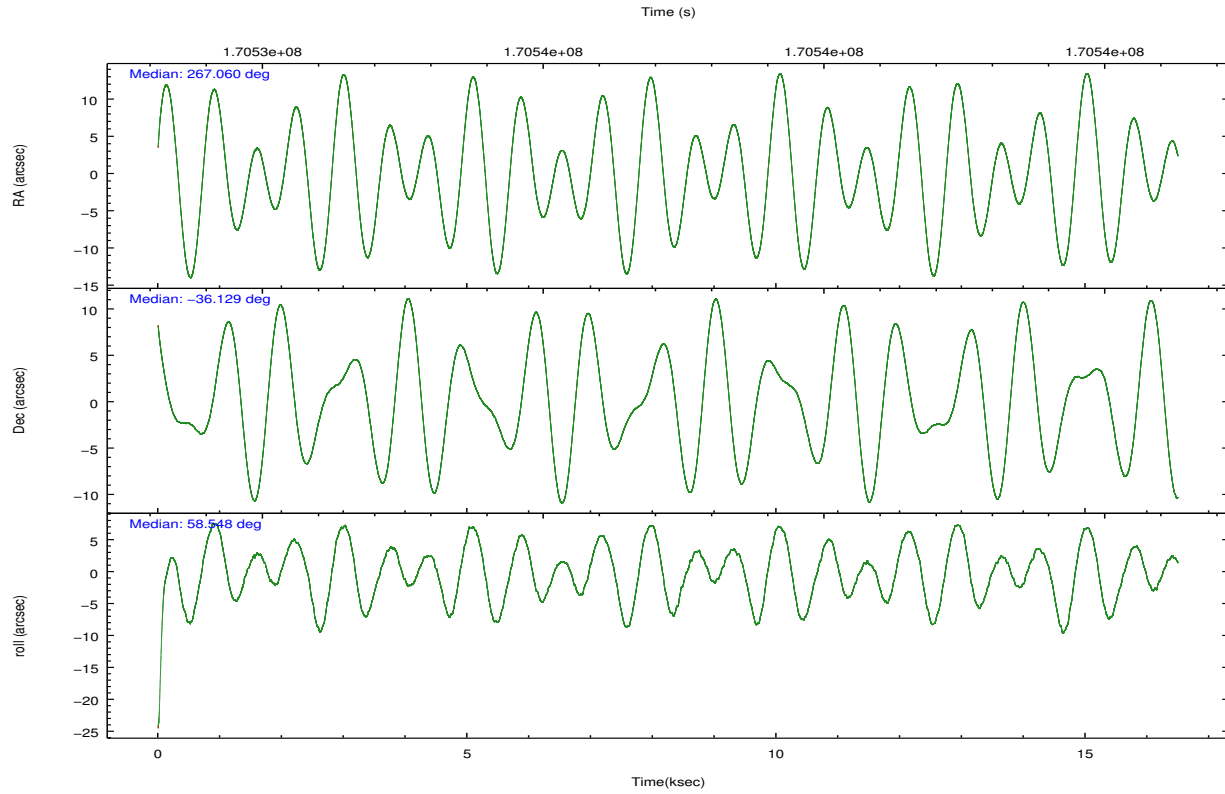
	ccd 6	ccd 7
grade 0 events	5379	4865
	5%	5%
grade 1 events	44	74
	0%	0%
grade 2 events	2742	8889
	2%	9%
grade 3 events	1124	4129
	1%	4%
grade 4 events	1041	4172
	0%	4%
grade 5 events	3367	9865
	3%	10%
grade 6 events	1990	22903
	1%	23%
grade 7 events	89070	41455
	85%	43%

## 2.2 Compared Parameters

Parameter	Planned	Actual	Parameter	Planned	Actual
Instrument	ACIS	ACIS	Obspar format version number	7	7
Detector	ACIS-67	ACIS-67	Obspar file type	PREDICTED	ACTUAL
Grating	NONE	NONE	Obspar update status	NONE	UPDATED
Data mode	VFAINT	VFAINT	Number of optional ACIS chips dropped	0	0
Observation mode	POINTING	POINTING	On-chip summing requested	N	N
[deg] Pointing RA	267.059803	267.0602122041062	Subarray requested	NONE	NONE
[deg] Pointing Dec	-36.156064	-36.12884812593932	Alternating exposures requested	N	N
[deg] Pointing Roll	58.393315	58.55017354392527	[s] Primary exposure time	0.000000	3
[mm] SIM focus pos	-0.684267	-0.6828225247311905			
[mm] SIM defocus	0	0.001444936568705701			
[mm] SIM translation stage pos	-190.132523	-190.1400660498719			
[mm] SIM translation stage offset	0	0.00754346686406393			
[s] Observation start time (MET)	170529979.184000	170528615.71722			
Observation start date	2003-05-28T17:25:15	2003-05-28T17:03:35			
[s] Observation end time (MET)	170545479.184000	170547008.318			
Observation end date	2003-05-28T21:43:35	2003-05-28T22:10:08			
Read mode	TIMED	TIMED			

## 2.3 Aspect



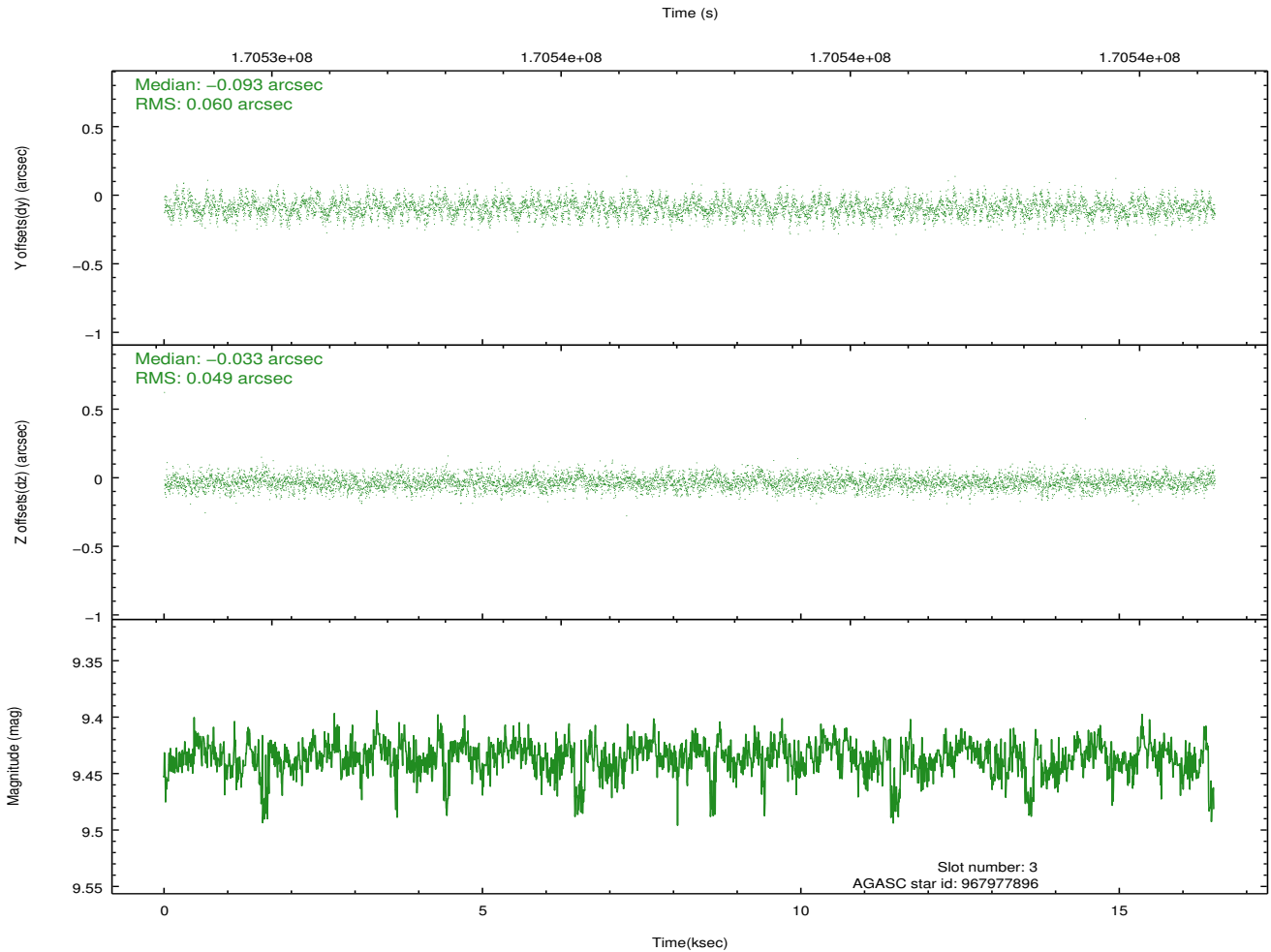
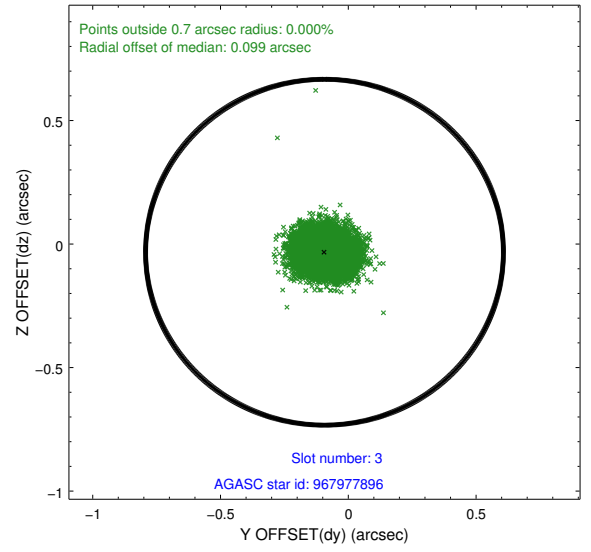
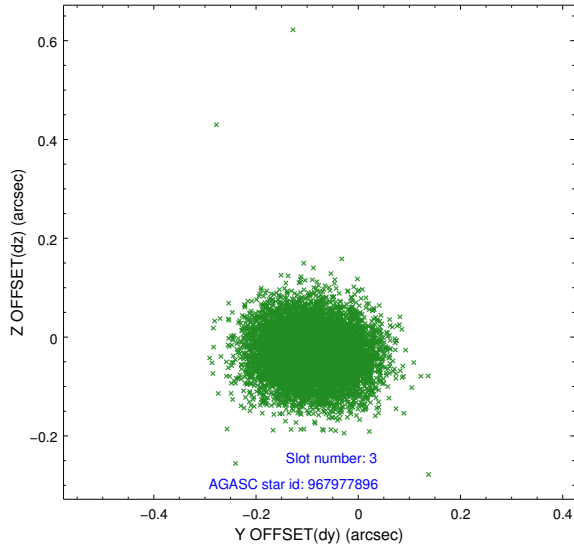


### Slot Statistics

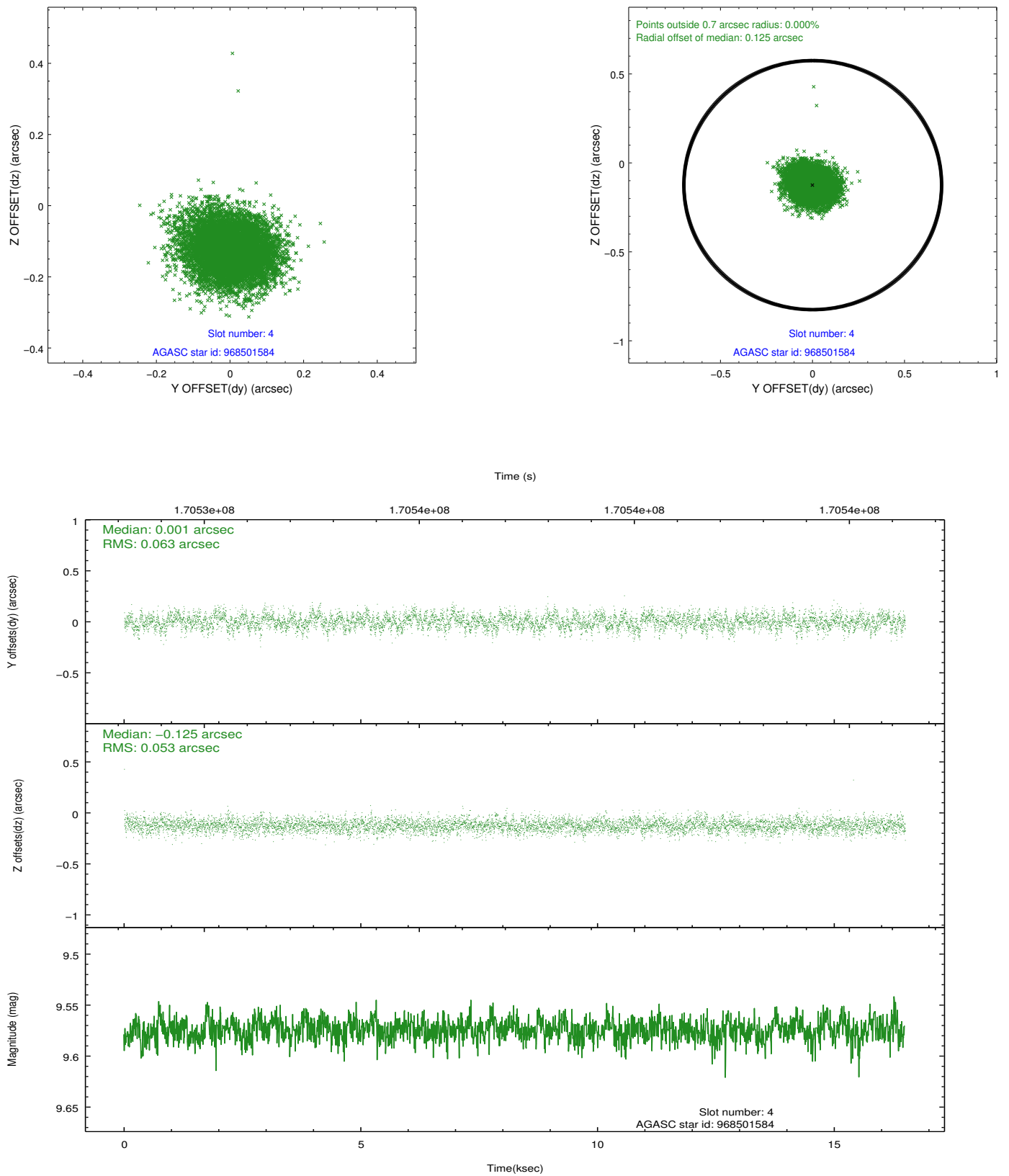
slot	status	id	mag	n_pts	med_dy	med_dz	dr1	dr2	ra	dec	mean_y	mean_z
0	FID	ACIS-S-1	7.19	4024	0.037	-0.051	0.009	0.015	0.000000	0.000000	939.91	-1724.20
1	FID	ACIS-S-2	7.11	4024	-0.059	0.016	0.007	0.012	0.000000	0.000000	-755.94	-1728.91
2	FID	ACIS-S-4	7.20	4024	-0.004	0.041	0.007	0.011	0.000000	0.000000	2157.05	179.76
3	GUIDE	967977896	9.43	8044	-0.093	-0.033	0.083	0.133	266.967297	-35.404609	2161.61	1649.21
4	GUIDE	968501584	9.57	8043	0.001	-0.125	0.087	0.144	266.998581	-35.722059	1237.21	971.55
5	GUIDE	968503504	8.60	8046	0.080	-0.008	0.061	0.100	266.716766	-36.547676	-1721.83	105.40
6	GUIDE	968639336	8.67	8044	-0.088	0.145	0.076	0.118	267.813813	-35.890844	1958.24	-1376.53
7	GUIDE	968500640	8.92	8046	0.100	0.022	0.066	0.108	266.522838	-36.659039	-2358.04	369.46

## 2.4 Star Slots

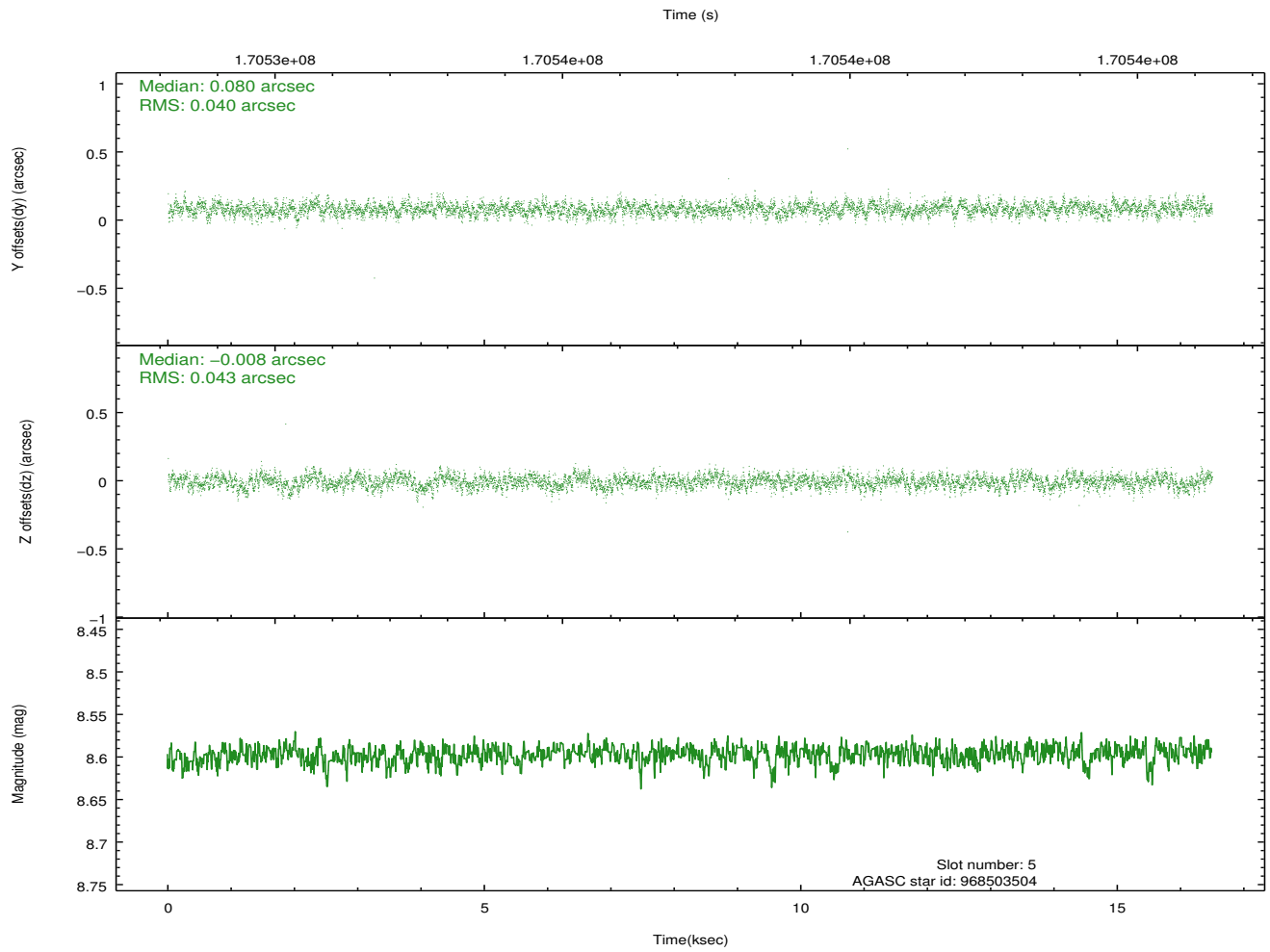
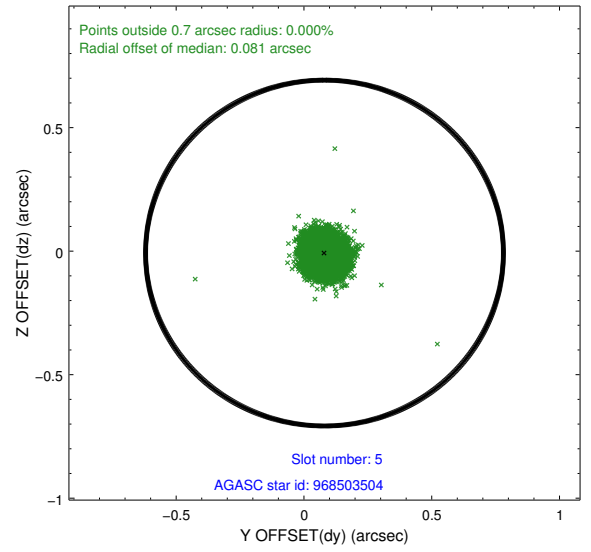
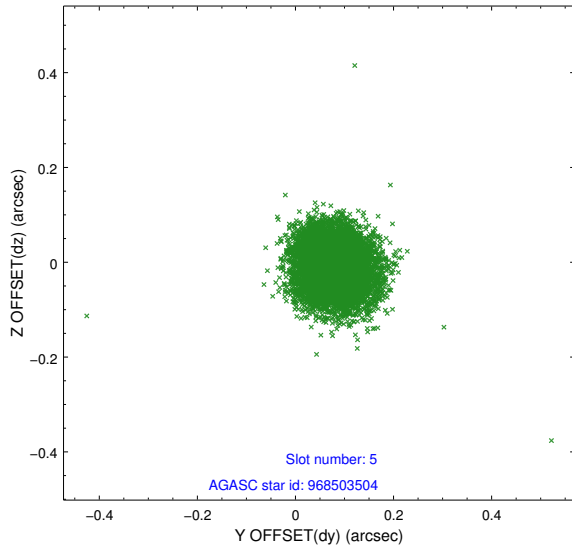
### 2.4.1 Slot 3



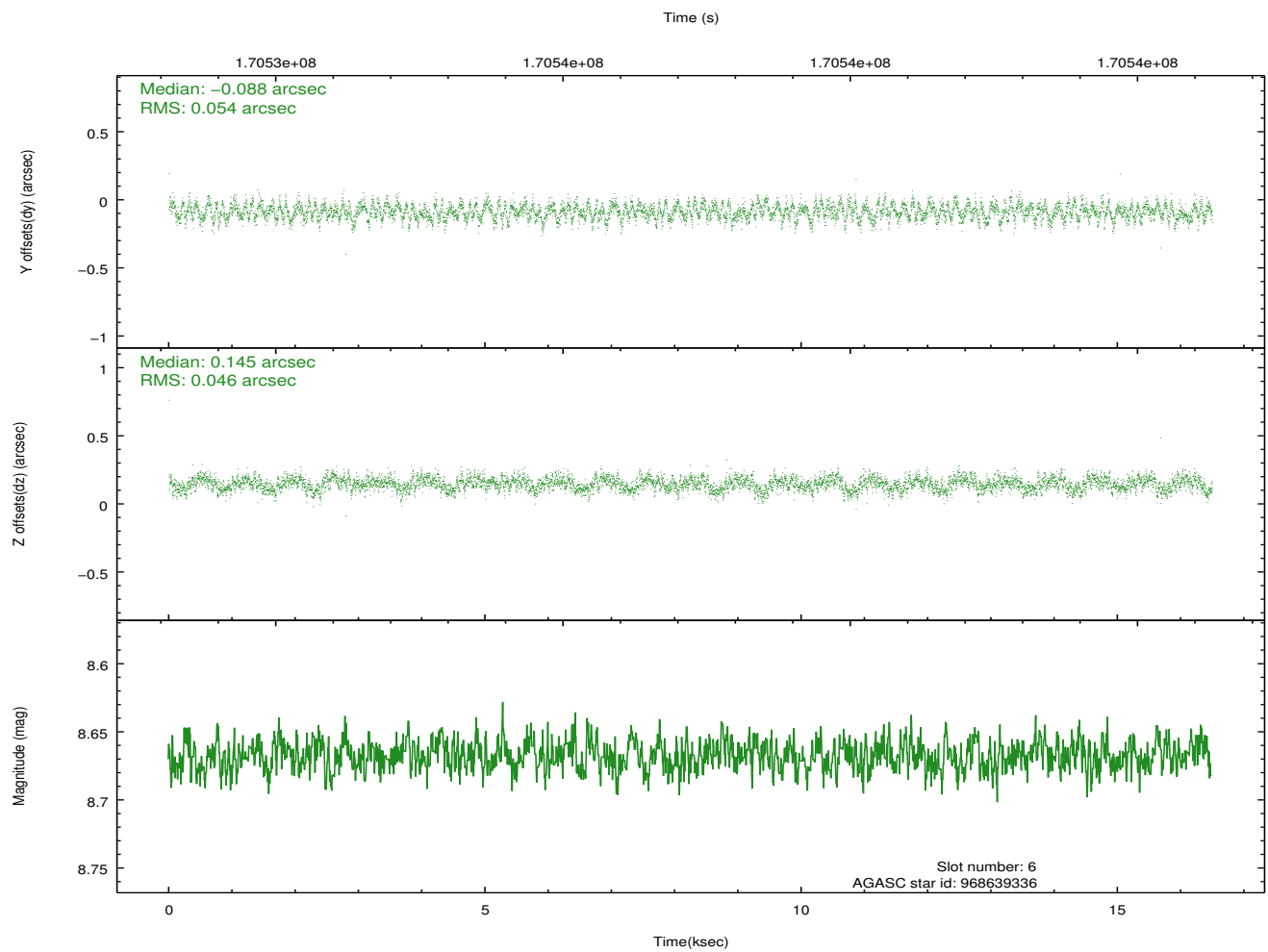
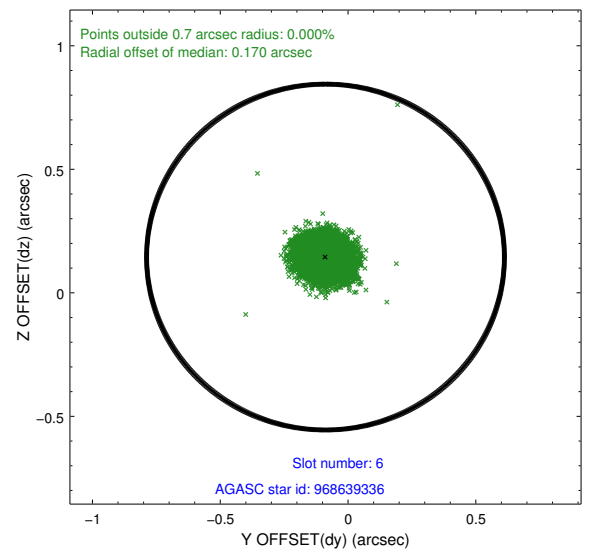
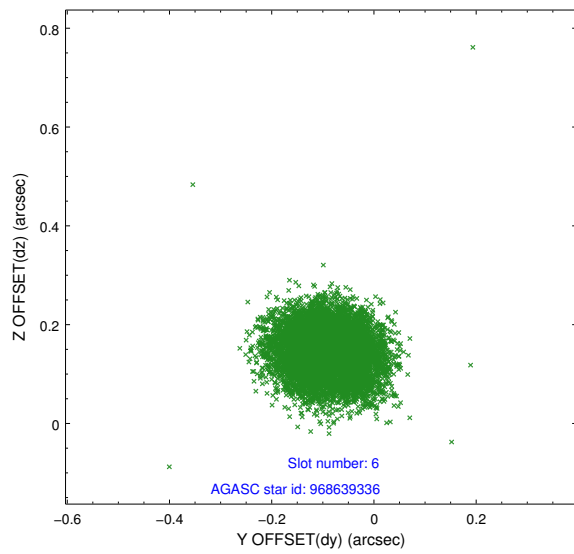
## 2.4.2 Slot 4



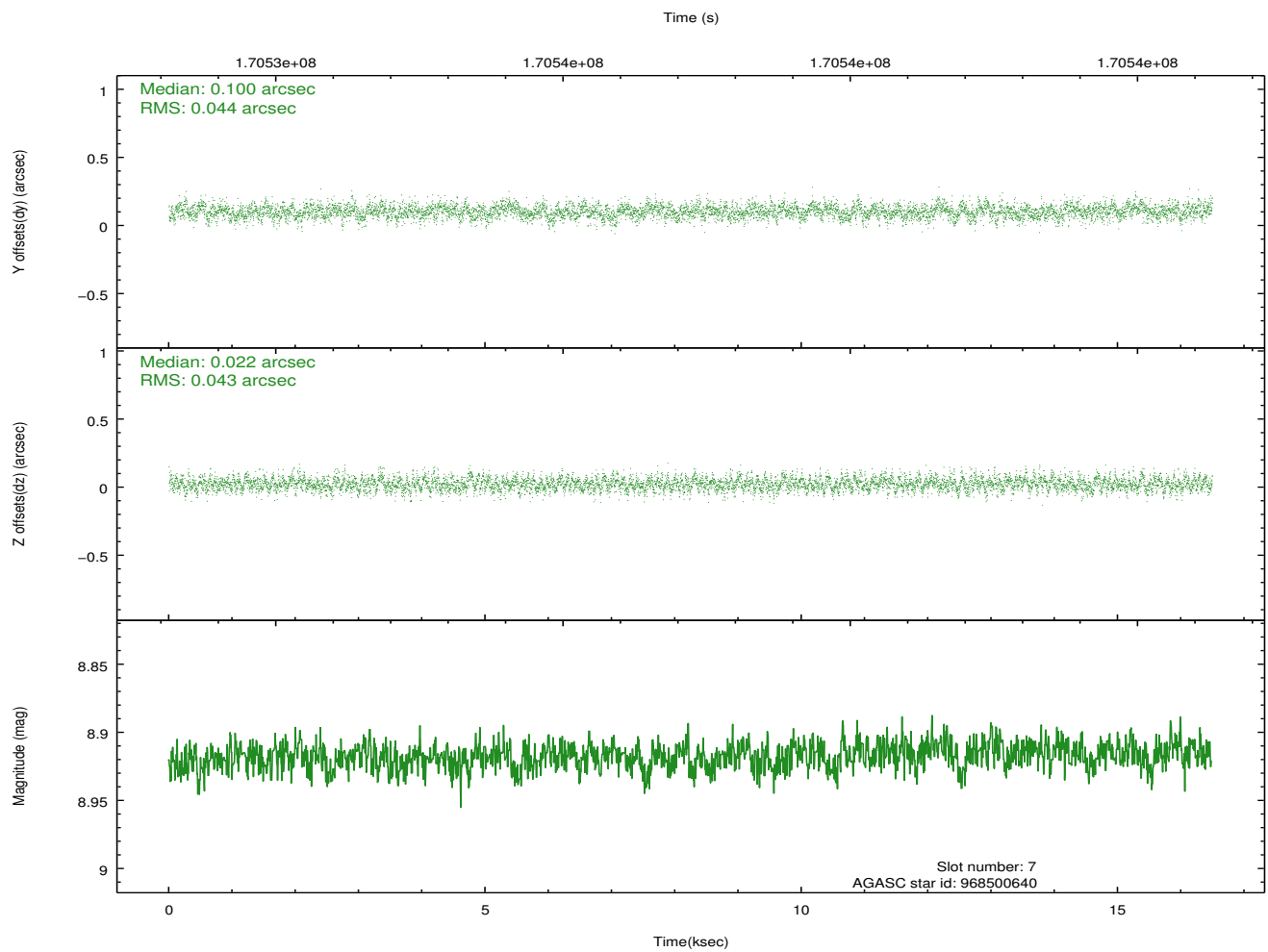
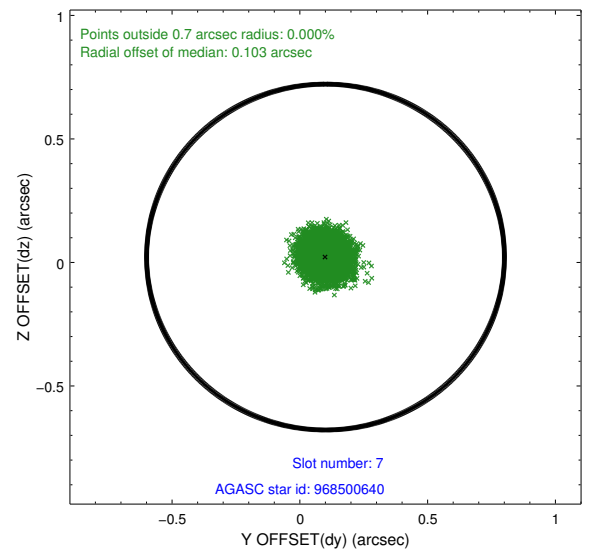
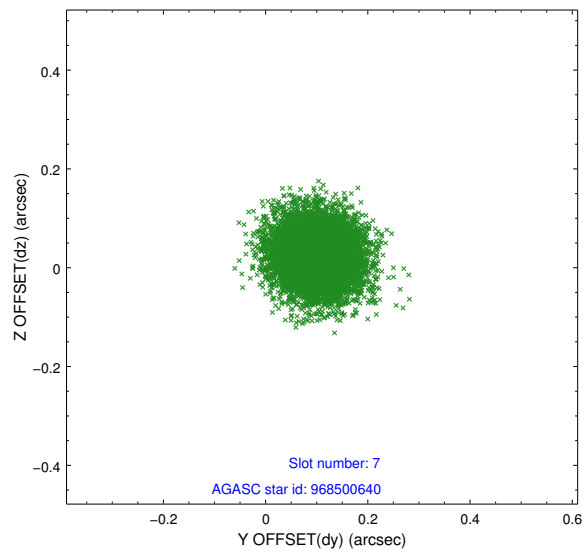
### 2.4.3 Slot 5



## 2.4.4 Slot 6

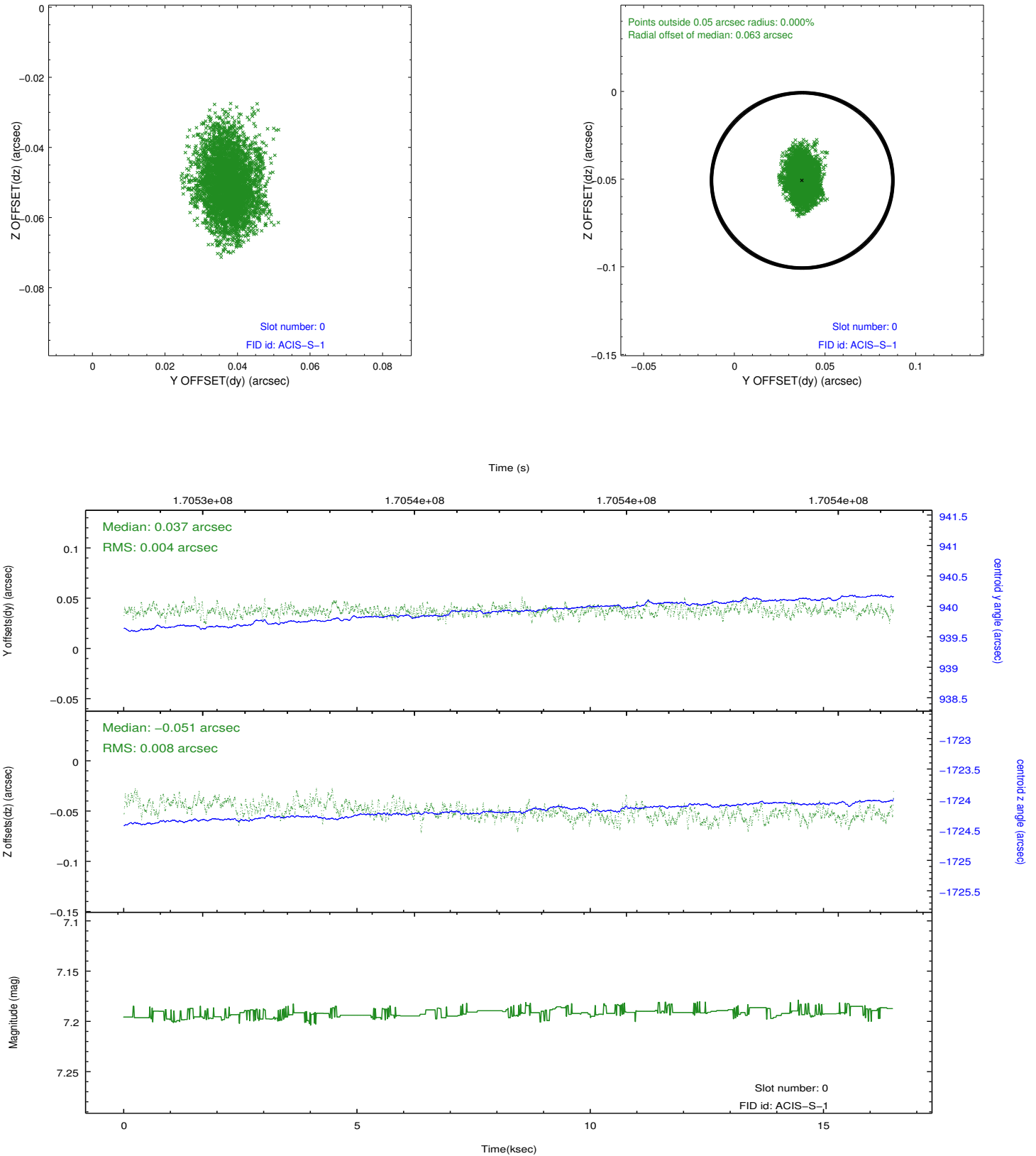


## 2.4.5 Slot 7

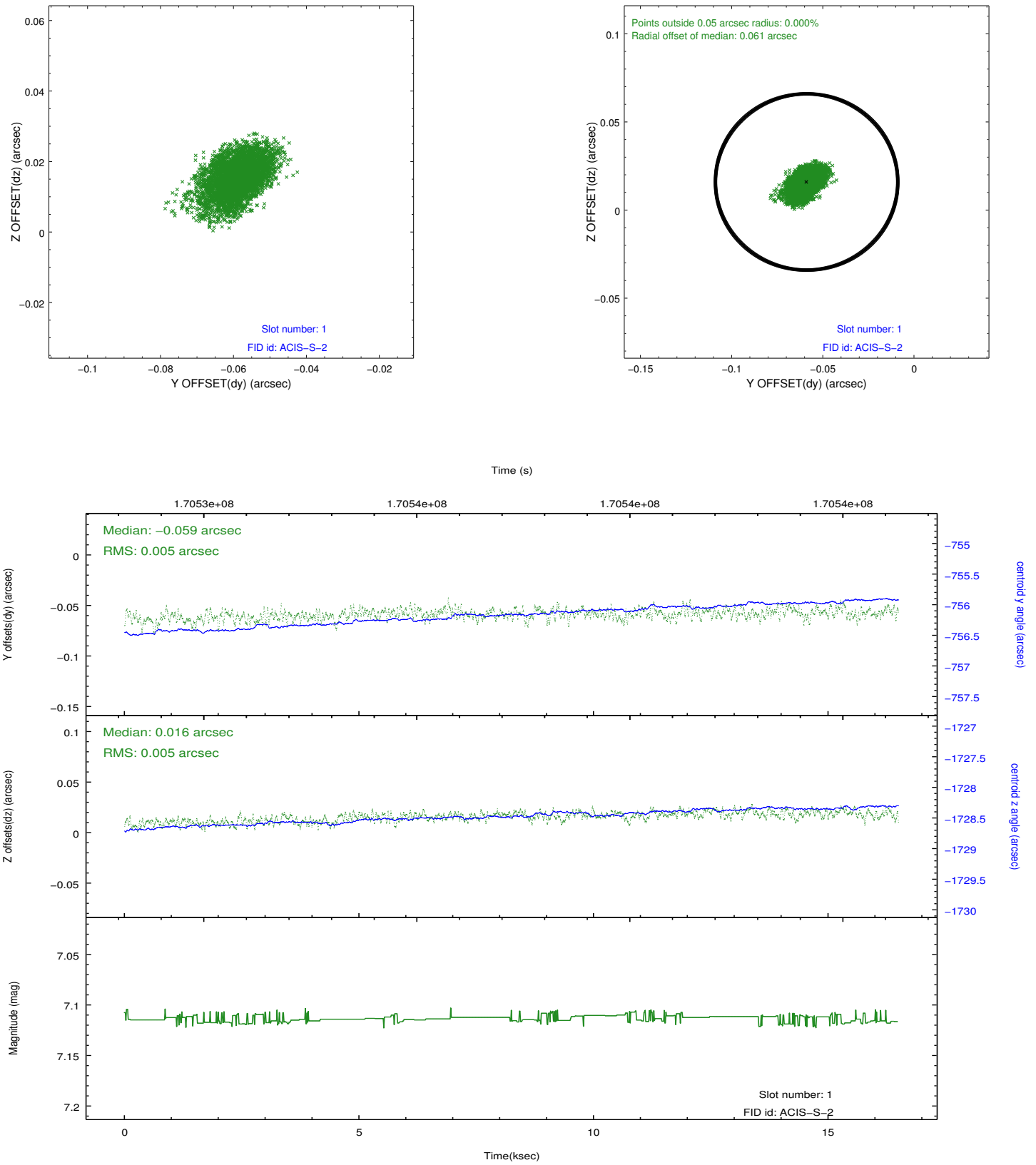


## 2.5 FID Slots

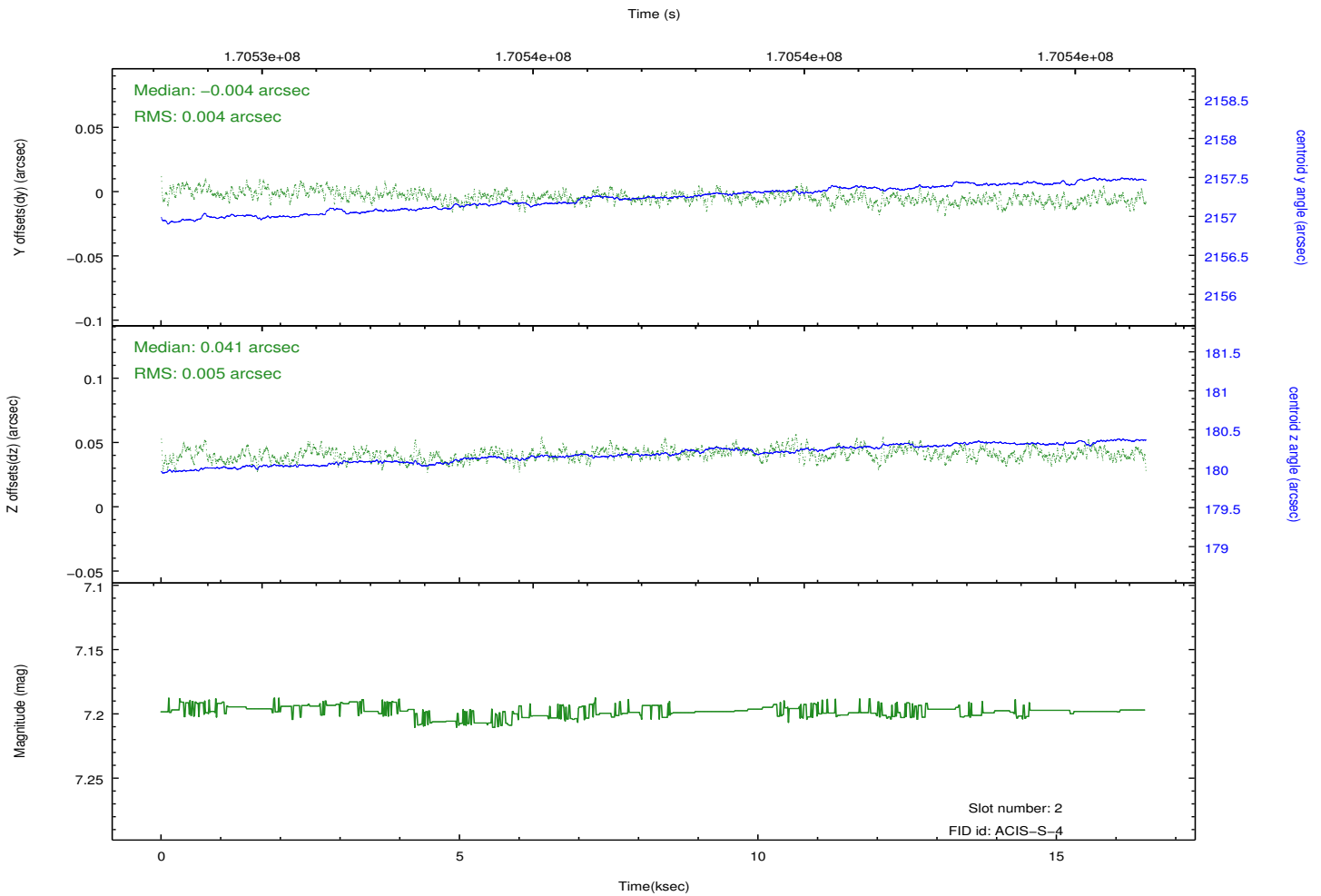
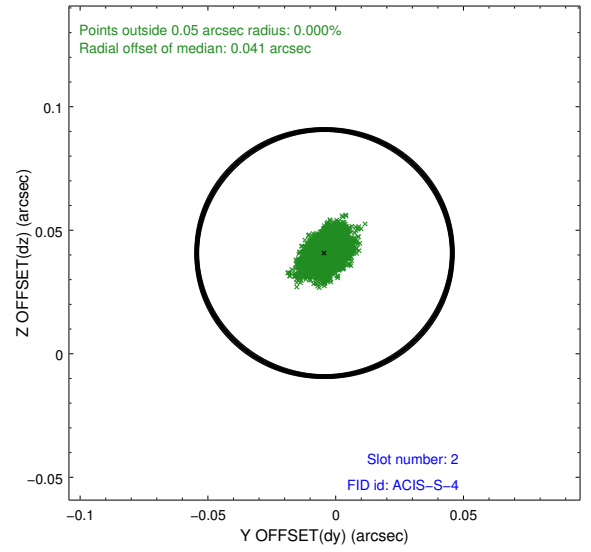
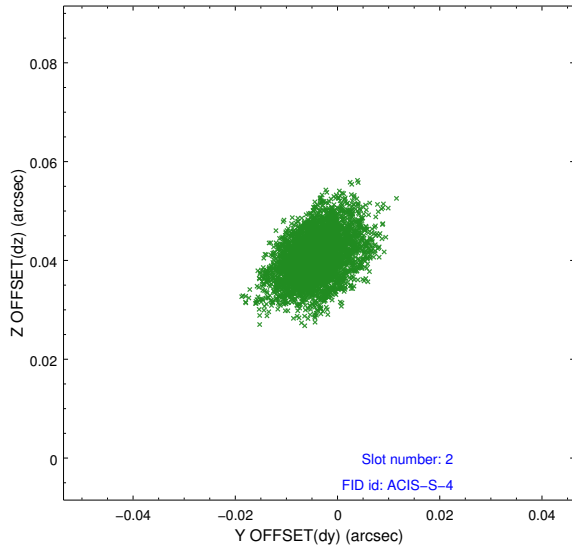
### 2.5.1 Slot 0



## 2.5.2 Slot 1



### 2.5.3 Slot 2



# A Summary

## A.1 Status

V&V Scientist	Jen Lauer
V&V Date (YYYY-MM-DD)	2012.11.15
V&V Edition	1
V&V Disposition and Status	OK
V&V Charge Time	15.95

## A.2 Comments

Charge time for this ObsId remains at previous value of 15.95 ks although with the current processing the charge time would have been 16.01 ksec.