

V&V Reference Report

L2 ASCDS Version : 8.4.5

Observation 3549 - L2 Version 3
Chandra X-Ray Center

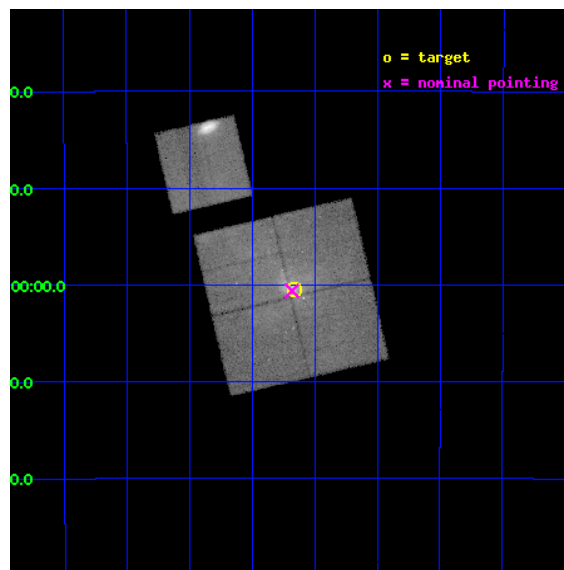
L2 Processing Date : Oct 29 2012

Contents

1	Front	2
2	OBI	3
2.1	OBI	3
2.1.1	Images	3
2.1.2	Bias	3
2.1.3	Parameters	4
2.1.4	Events	4
2.2	Compared Parameters	5
2.3	Aspect	6
2.4	Star Slots	9
2.4.1	Slot 3	9
2.4.2	Slot 4	10
2.4.3	Slot 5	11
2.4.4	Slot 6	12
2.4.5	Slot 7	13
2.5	FID Slots	14
2.5.1	Slot 0	14
2.5.2	Slot 1	15
2.5.3	Slot 2	16
A	Summary	17
A.1	Status	17
A.2	Comments	17

1 Front

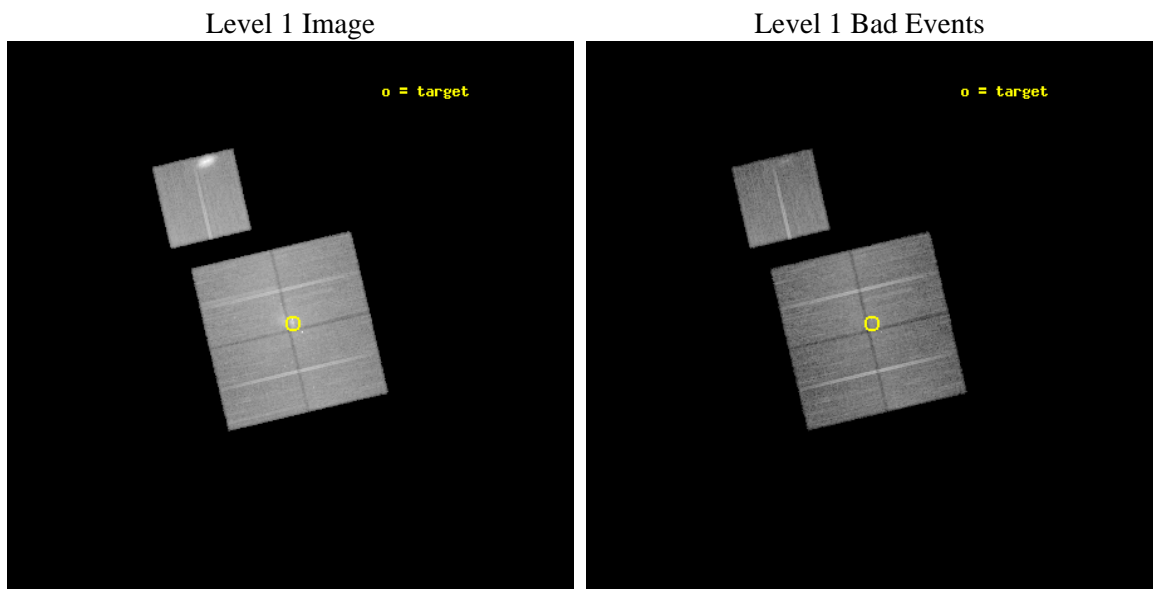
seq_num	600294	Sequence number
obs_id	3549	Observation id
title	X-RAY MONITORING OF SAGITTARIUS A* AND THE GALACTIC CENTER	Proposa
observer	Professor Gordon Garmire	Principal investigator
object	SGR A*	Source name
dtcycle	0	
cycle	P	events from which exps? Prim/Second/Both
ra_targ	266.416667	Observer's specified target RA [deg]
dec_targ	-29.007778	Observer's specified target Dec [deg]
ra_nom	266.42095070643	Nominal RA [deg]
dec_nom	-29.010521736579	Nominal Dec [deg]
roll_nom	346.82015030735	Nominal Roll [deg]
revision	3	Processing version of data
ontime	25116.199951679	Sum of GTIs [s]
livetime	24788.038309032	Livetime [s]
ontime0	25116.199951679	Sum of GTIs [s]
ontime1	25116.199951679	Sum of GTIs [s]
ontime2	25116.199951679	Sum of GTIs [s]
ontime3	25116.199951679	Sum of GTIs [s]
ontime6	25116.199951679	Sum of GTIs [s]
l2events	271013	Number of level 2 events



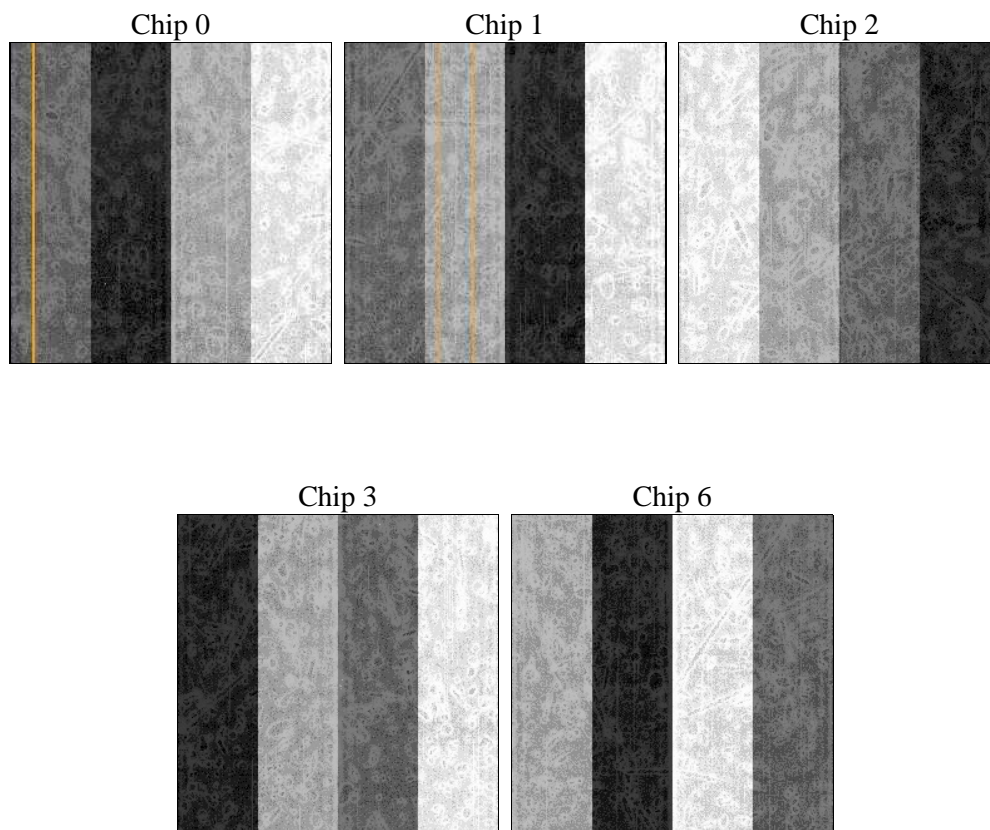
2 OBI

2.1 OBI

2.1.1 Images



2.1.2 Bias



2.1.3 Parameters

obi_num	0	Obi number	sched_exp_time	25000.000000	[s] Scheduled observation exposure time
ascdsver	8.4.5	Processing system revision	ontime	25116.199951679	Sum of GTIs [s]
caldbver	4.5.2	 	ontime0	25116.199951679	Sum of GTIs [s]
date	2012-10-29T18:14:31	Date and time of file creation	ontime1	25116.199951679	Sum of GTIs [s]
revision	3	Processing version of data	ontime2	25116.199951679	Sum of GTIs [s]
			ontime3	25116.199951679	Sum of GTIs [s]
			ontime6	25116.199951679	Sum of GTIs [s]
			l1events	1091822	Number of level 1 events

2.1.4 Events

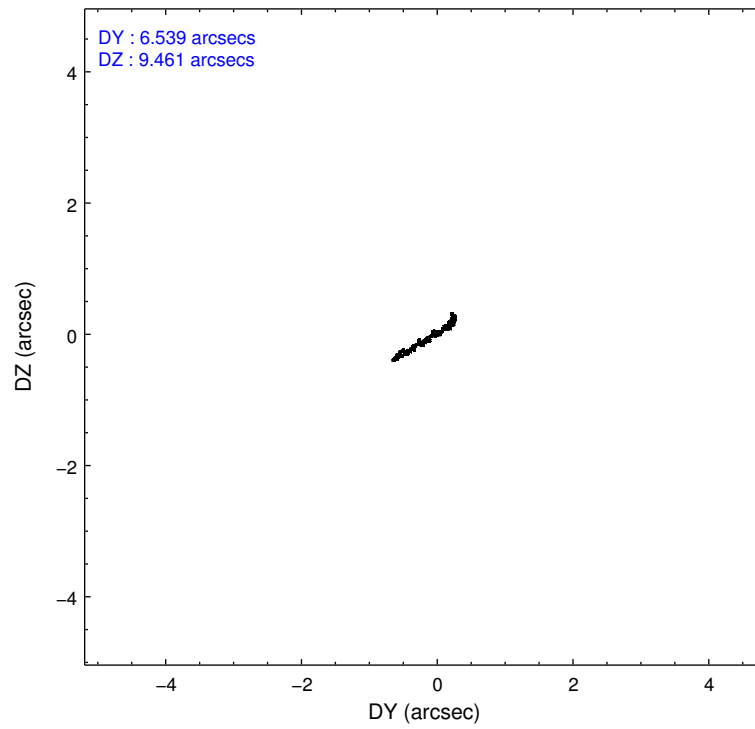
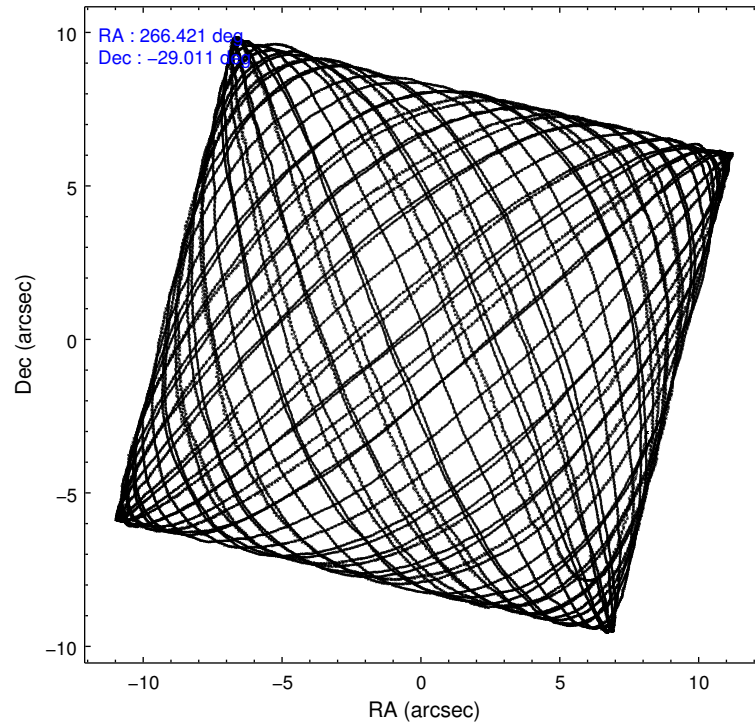
	ccd 0	ccd 1	ccd 2	ccd 3	ccd 6
level 1 events	182257	192835	238990	219191	258549
rejected events	135971	145854	169624	162481	168311
rejected %	74%	75%	70%	74%	65%

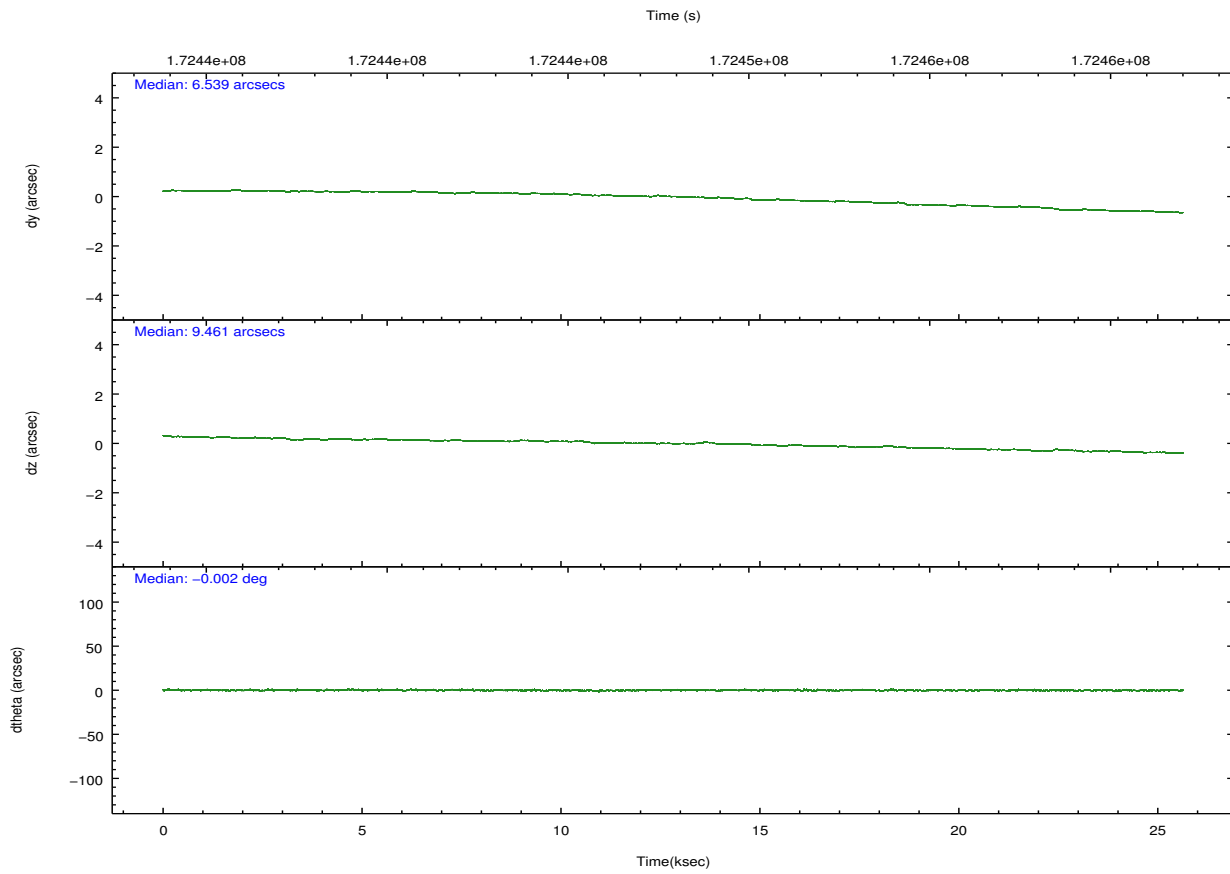
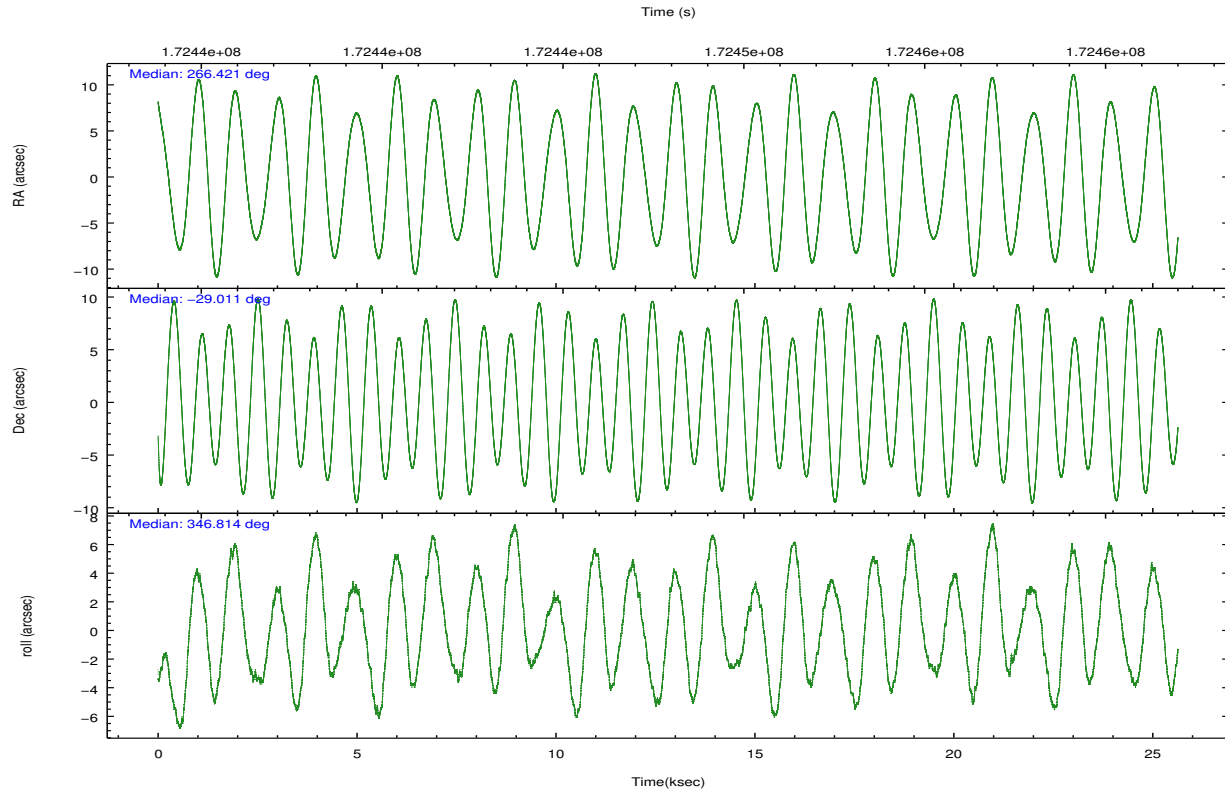
	ccd 0	ccd 1	ccd 2	ccd 3	ccd 6
grade 0 events	24485	23492	41393	32308	51289
	13%	12%	17%	14%	19%
grade 1 events	134	161	309	250	282
	0%	0%	0%	0%	0%
grade 2 events	9999	10163	12627	10146	17082
	5%	5%	5%	4%	6%
grade 3 events	2668	3015	3579	3409	5238
	1%	1%	1%	1%	2%
grade 4 events	2757	2924	4258	3443	5120
	1%	1%	1%	1%	1%
grade 5 events	5854	6380	6153	6710	6875
	3%	3%	2%	3%	2%
grade 6 events	6380	7391	7519	7408	11519
	3%	3%	3%	3%	4%
grade 7 events	129980	139309	163152	155517	161144
	71%	72%	68%	70%	62%

2.2 Compared Parameters

Parameter	Planned	Actual	Parameter	Planned	Actual
Instrument	ACIS	ACIS	Obspar format version number	7	7
Detector	ACIS-01236	ACIS-01236	Obspar file type	PREDICTED	ACTUAL
Grating	NONE	NONE	Obspar update status	NONE	UPDATED
Data mode	FAINT	FAINT	Number of optional ACIS chips dropped	0	0
Observation mode	POINTING	POINTING	On-chip summing requested	N	N
[deg] Pointing RA	266.391003	266.4209507064269	Subarray requested	NONE	NONE
[deg] Pointing Dec	-29.018535	-29.01052173657943	Alternating exposures requested	N	N
[deg] Pointing Roll	346.596939	346.820150307355	[s] Primary exposure time	0.000000	3.1
[mm] SIM focus pos	-0.782348	-0.7809083437167272			
[mm] SIM defocus	0	0.001439871863259334			
[mm] SIM translation stage pos	-233.592463	-233.5874344608287			
[mm] SIM translation stage offset	0	-0.005018542100998502			
[s] Observation start time (MET)	172435719.184000	172434535.64813			
Observation start date	2003-06-19T18:47:35	2003-06-19T18:28:55			
[s] Observation end time (MET)	172460719.184000	172461298.91176			
Observation end date	2003-06-20T01:44:15	2003-06-20T01:54:58			
Read mode	TIMED	TIMED			

2.3 Aspect



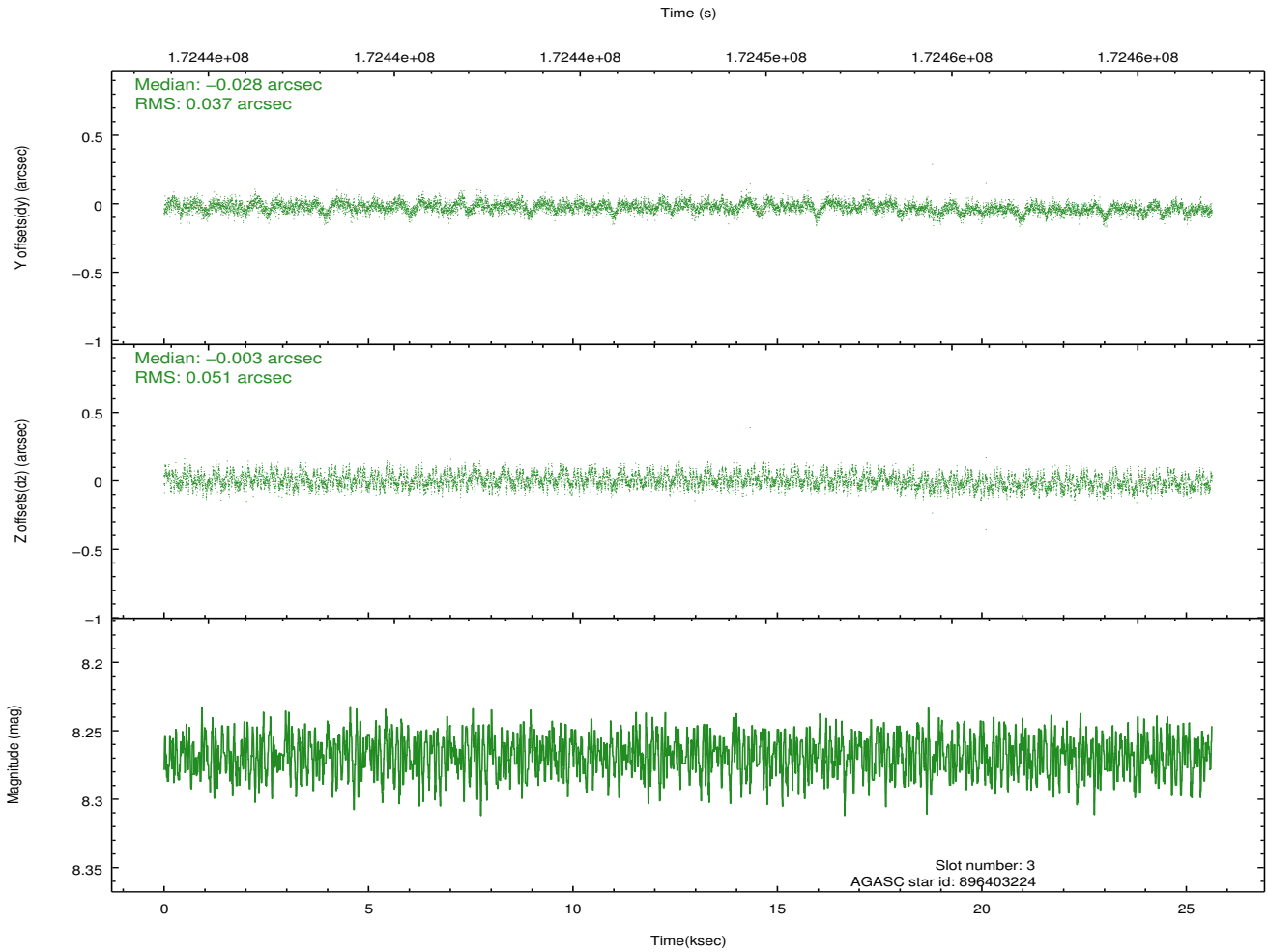
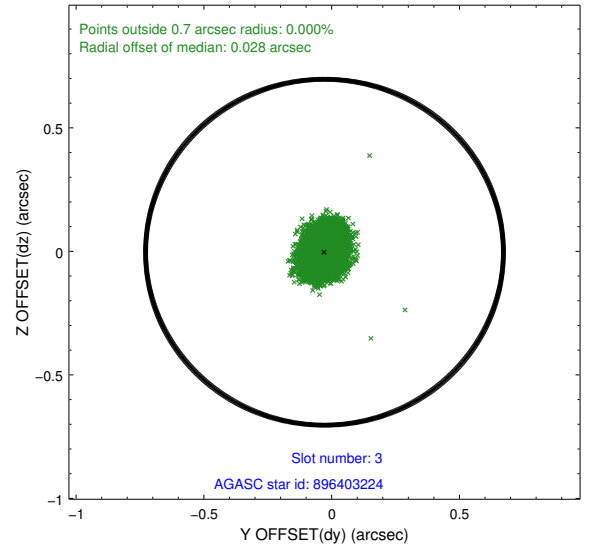
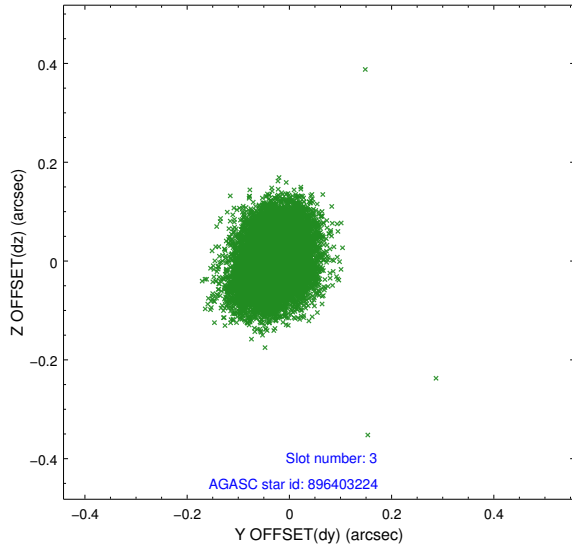


Slot Statistics

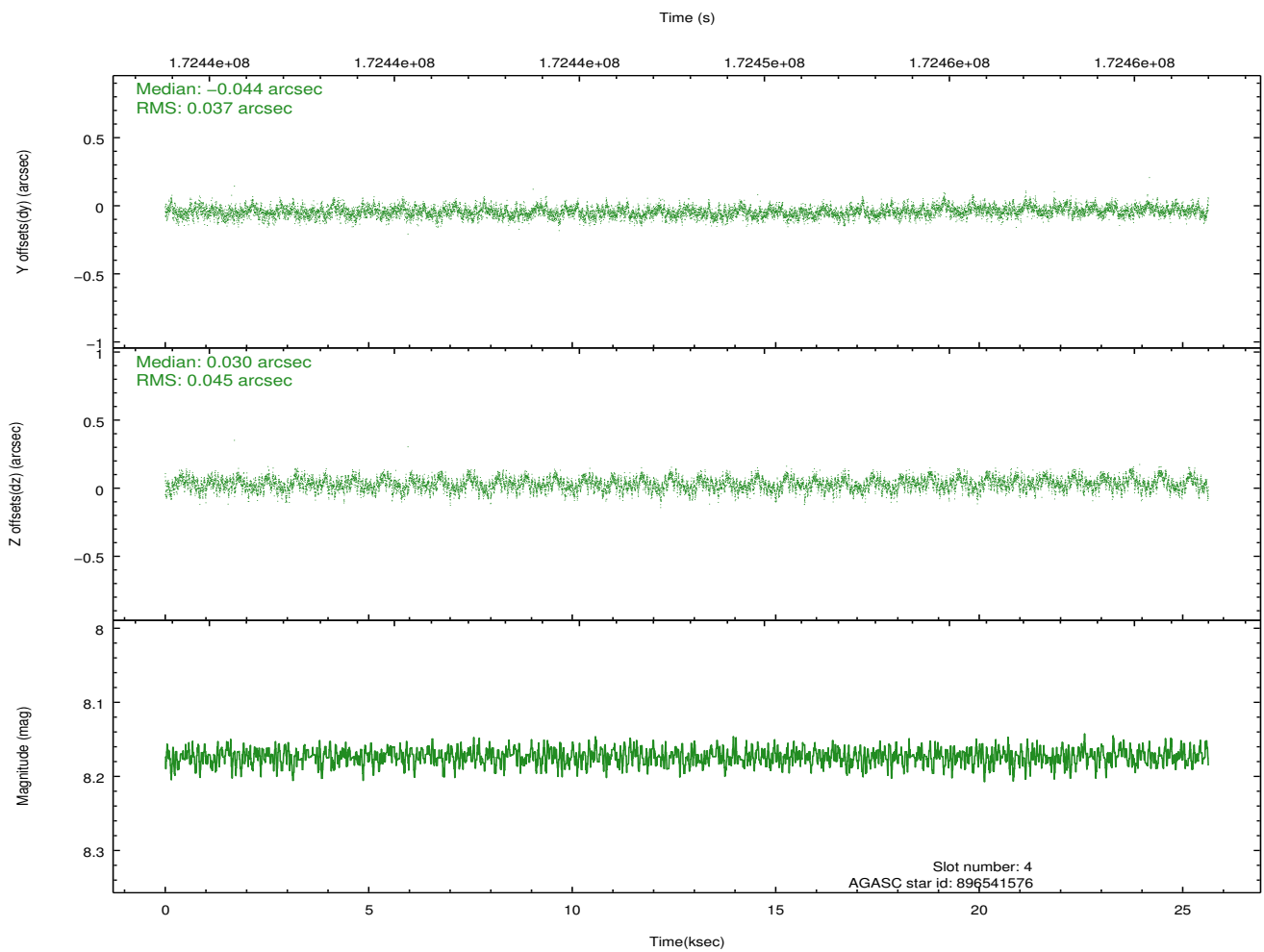
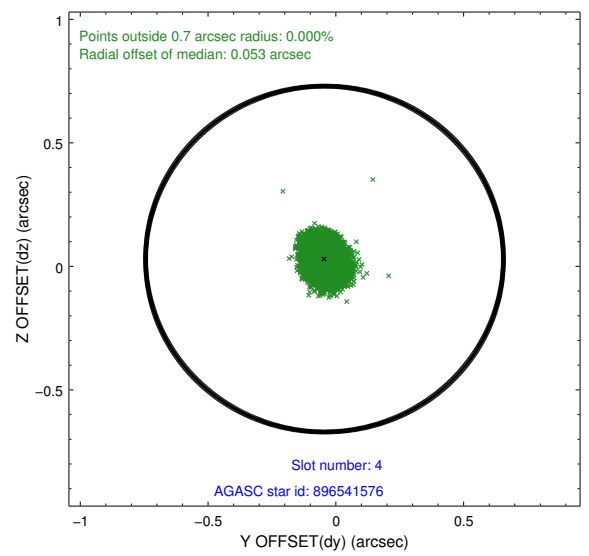
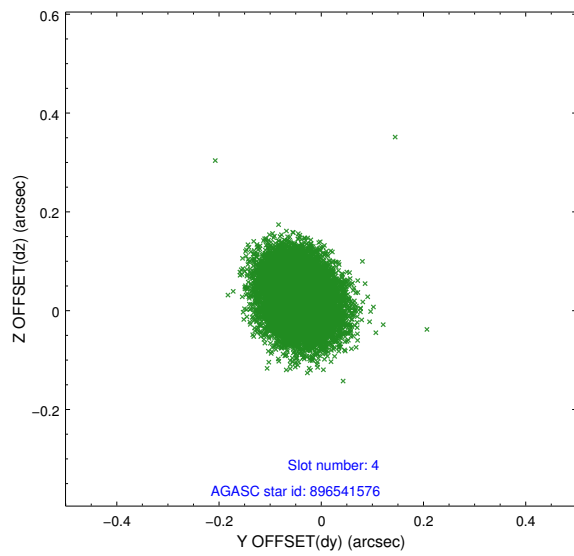
slot	status	id	mag	n_pts	med_dy	med_dz	dr1	dr2	ra	dec	mean_y	mean_z
0	FID	ACIS-I-1	7.24	6252	-0.014	0.049	0.011	0.018	0.000000	0.000000	933.24	-832.84
1	FID	ACIS-I-5	7.24	6252	-0.119	0.025	0.011	0.022	0.000000	0.000000	-1814.93	1064.55
2	FID	ACIS-I-6	7.26	6252	0.042	-0.004	0.008	0.014	0.000000	0.000000	398.70	1709.17
3	GUIDE	896403224	8.27	12504	-0.028	-0.003	0.068	0.109	265.612825	-29.438915	-2020.24	-2045.70
4	GUIDE	896541576	8.17	12502	-0.044	0.030	0.063	0.100	267.051055	-28.762912	1814.18	1372.64
5	GUIDE	896544560	9.02	12499	0.158	-0.028	0.080	0.134	265.902975	-28.371895	-2042.41	1903.18
6	GUIDE	896539920	8.79	12497	-0.015	0.062	0.079	0.129	266.848347	-29.638887	1910.65	-1842.90
7	GUIDE	896538840	8.91	12499	-0.070	-0.063	0.088	0.144	266.920426	-28.466925	1170.65	2316.28

2.4 Star Slots

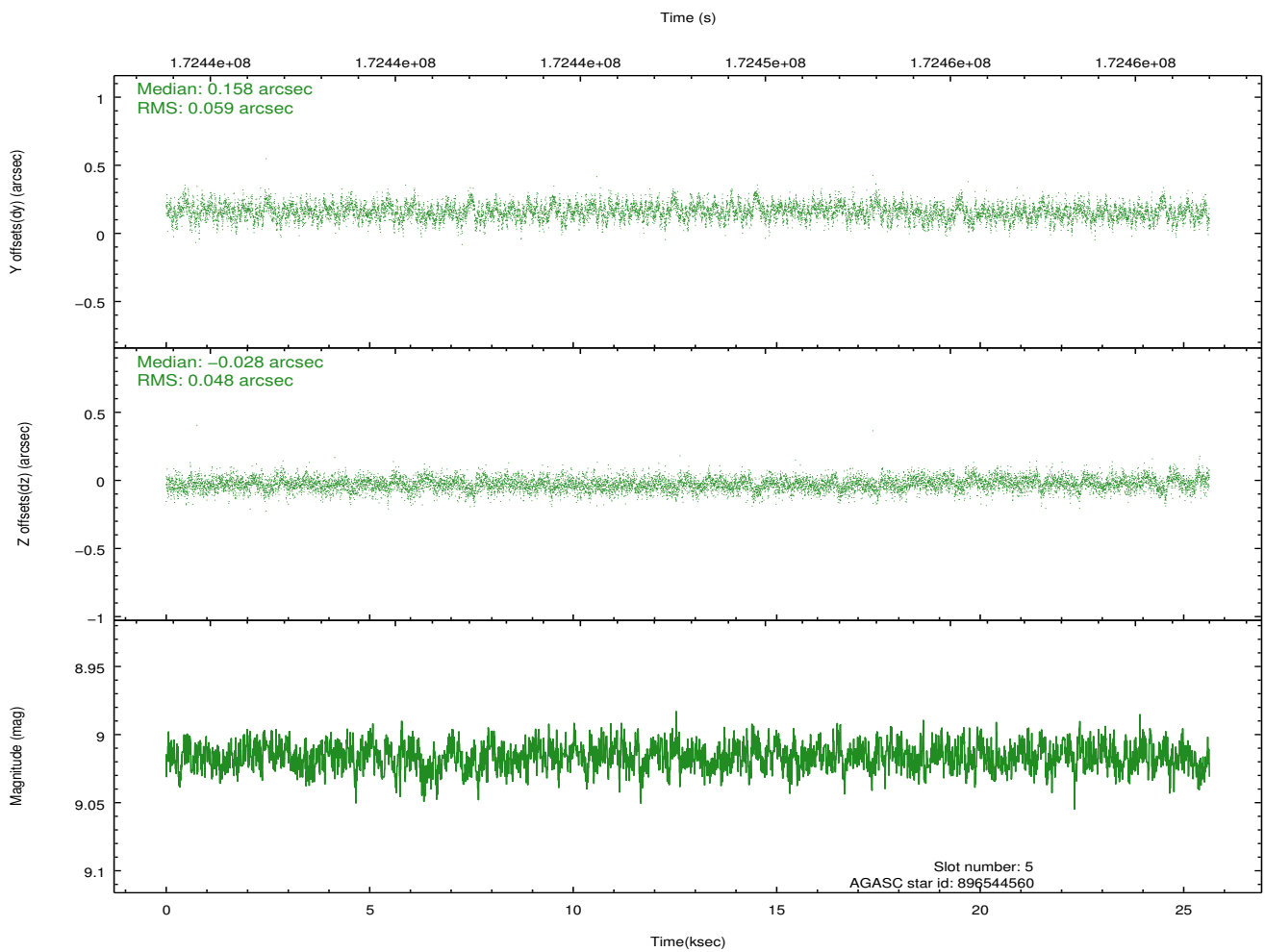
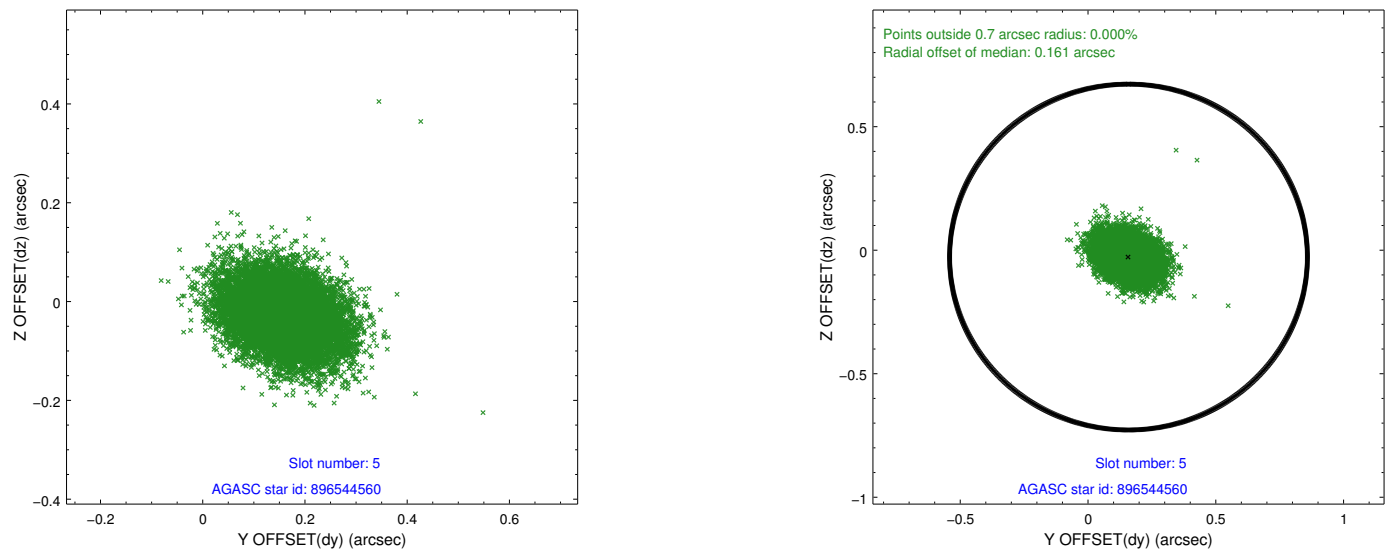
2.4.1 Slot 3



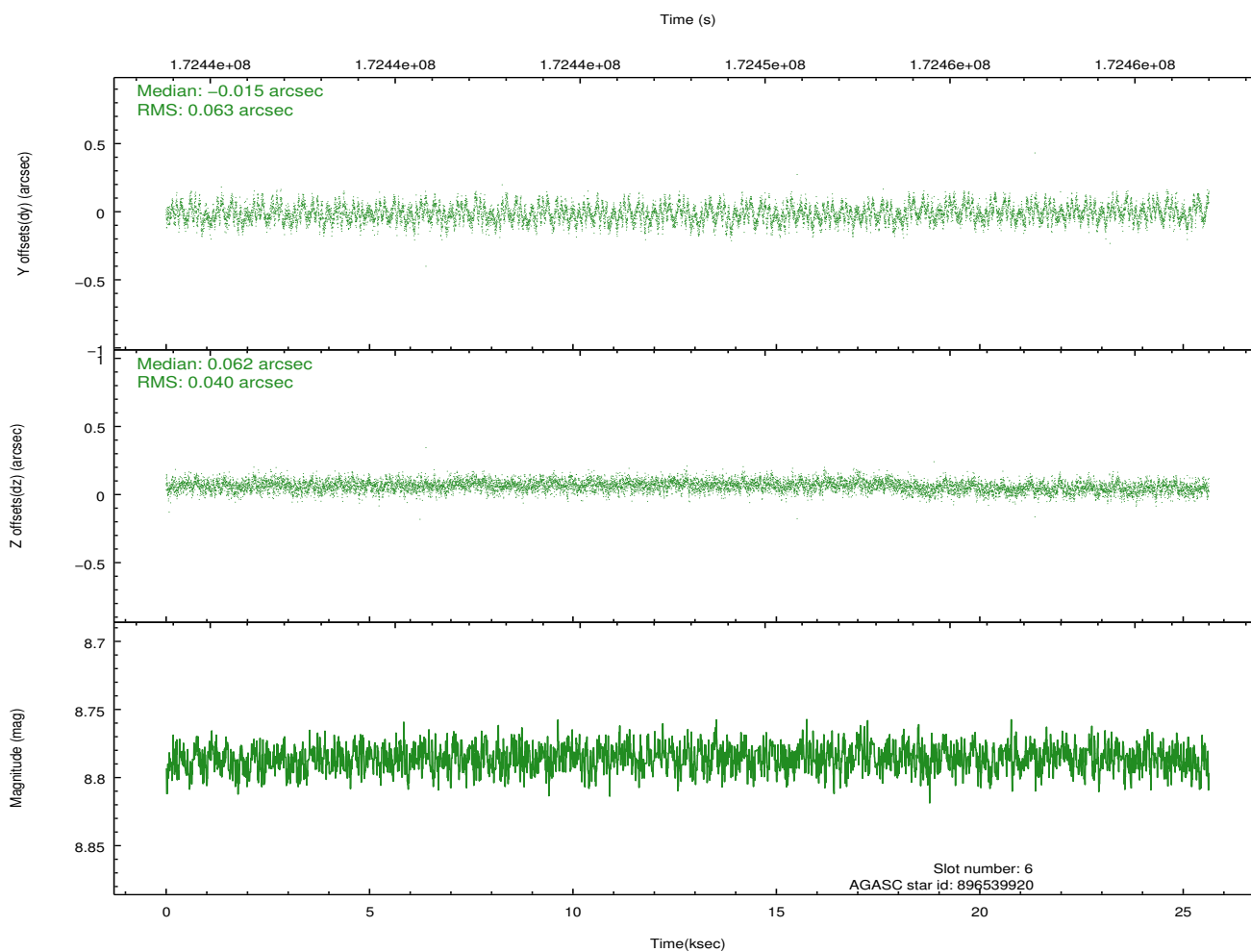
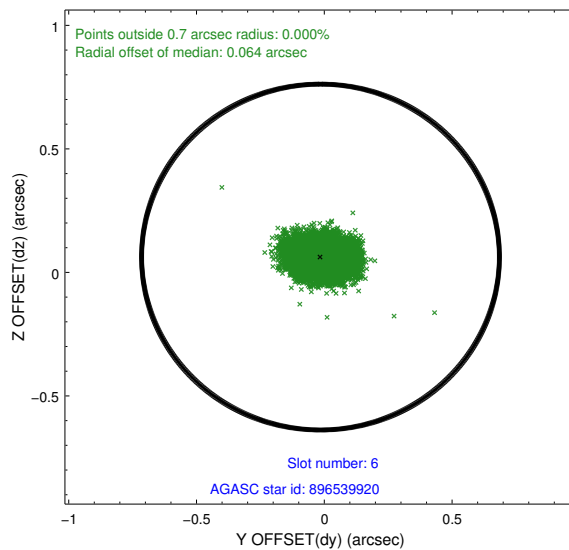
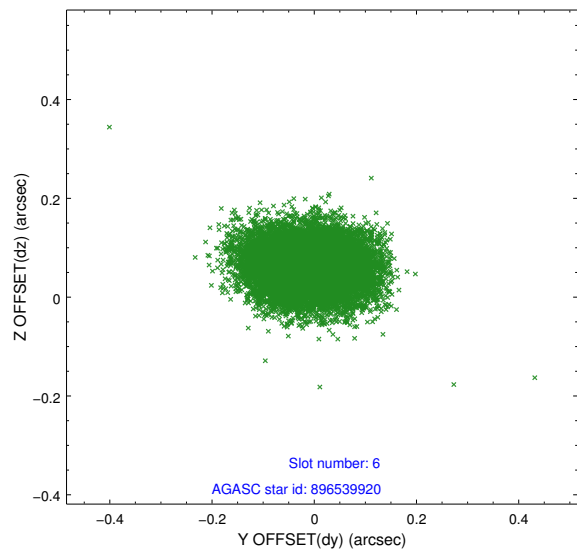
2.4.2 Slot 4



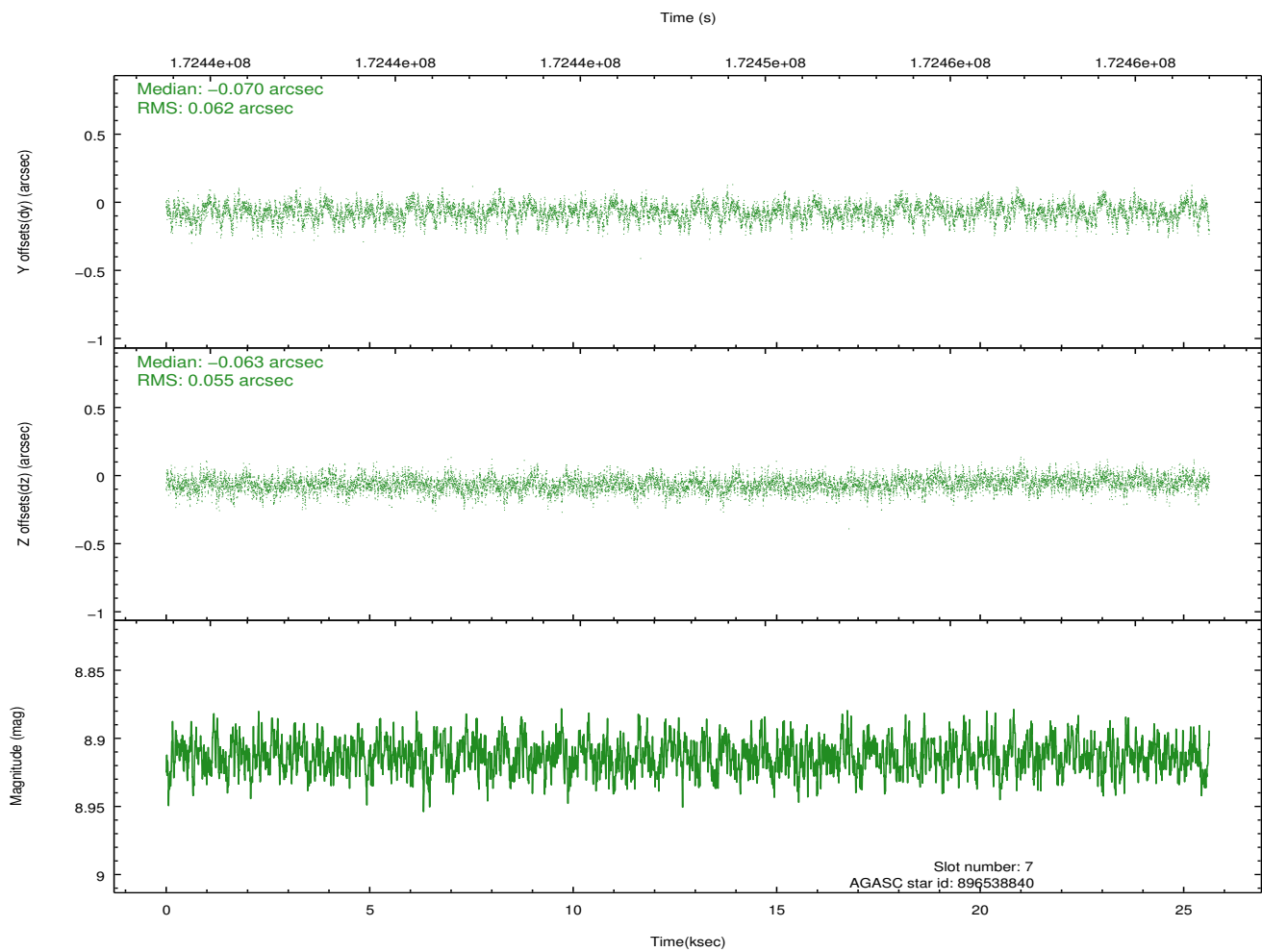
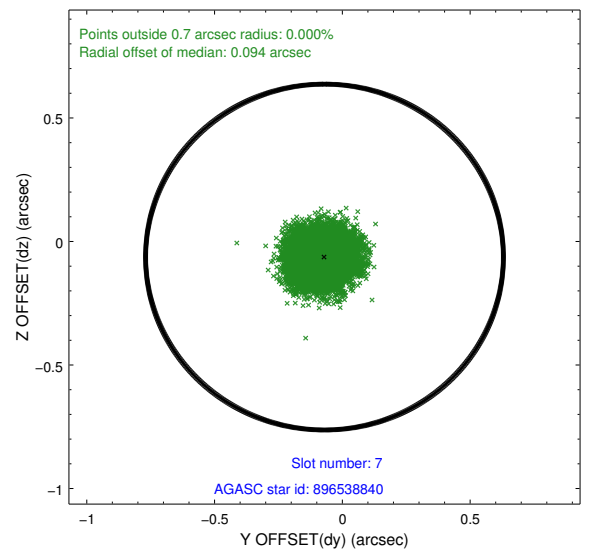
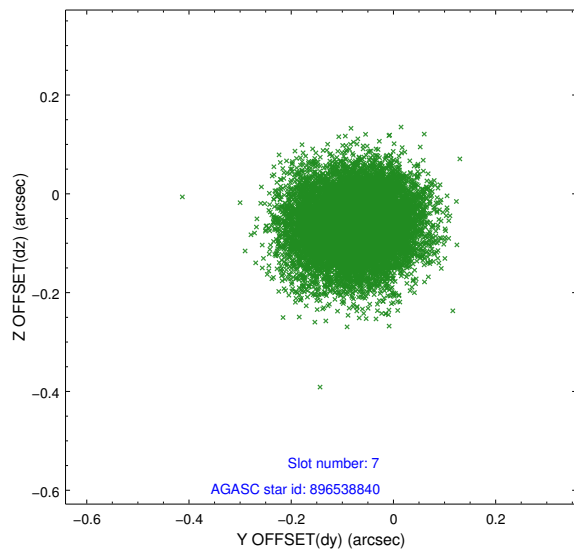
2.4.3 Slot 5



2.4.4 Slot 6

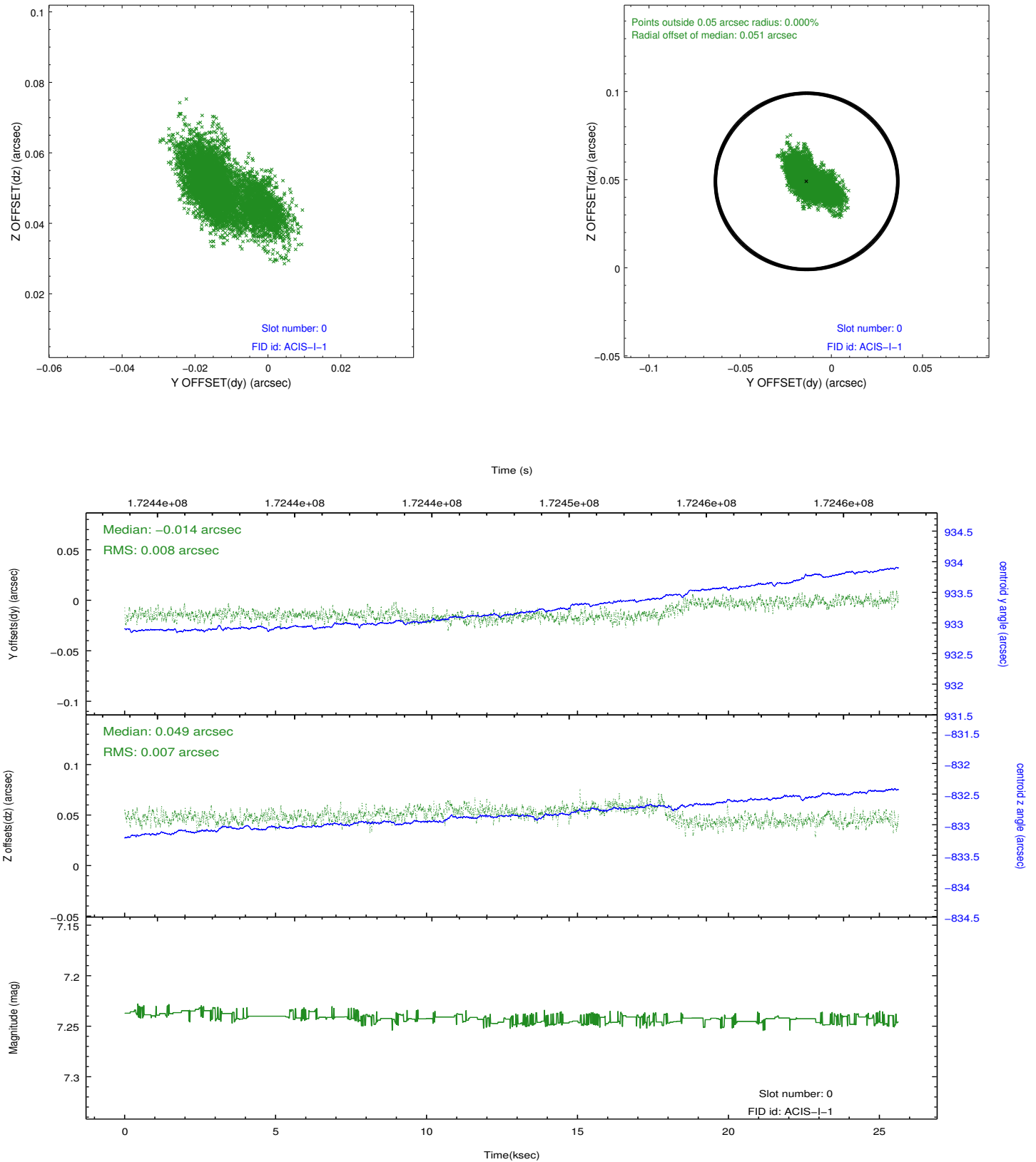


2.4.5 Slot 7

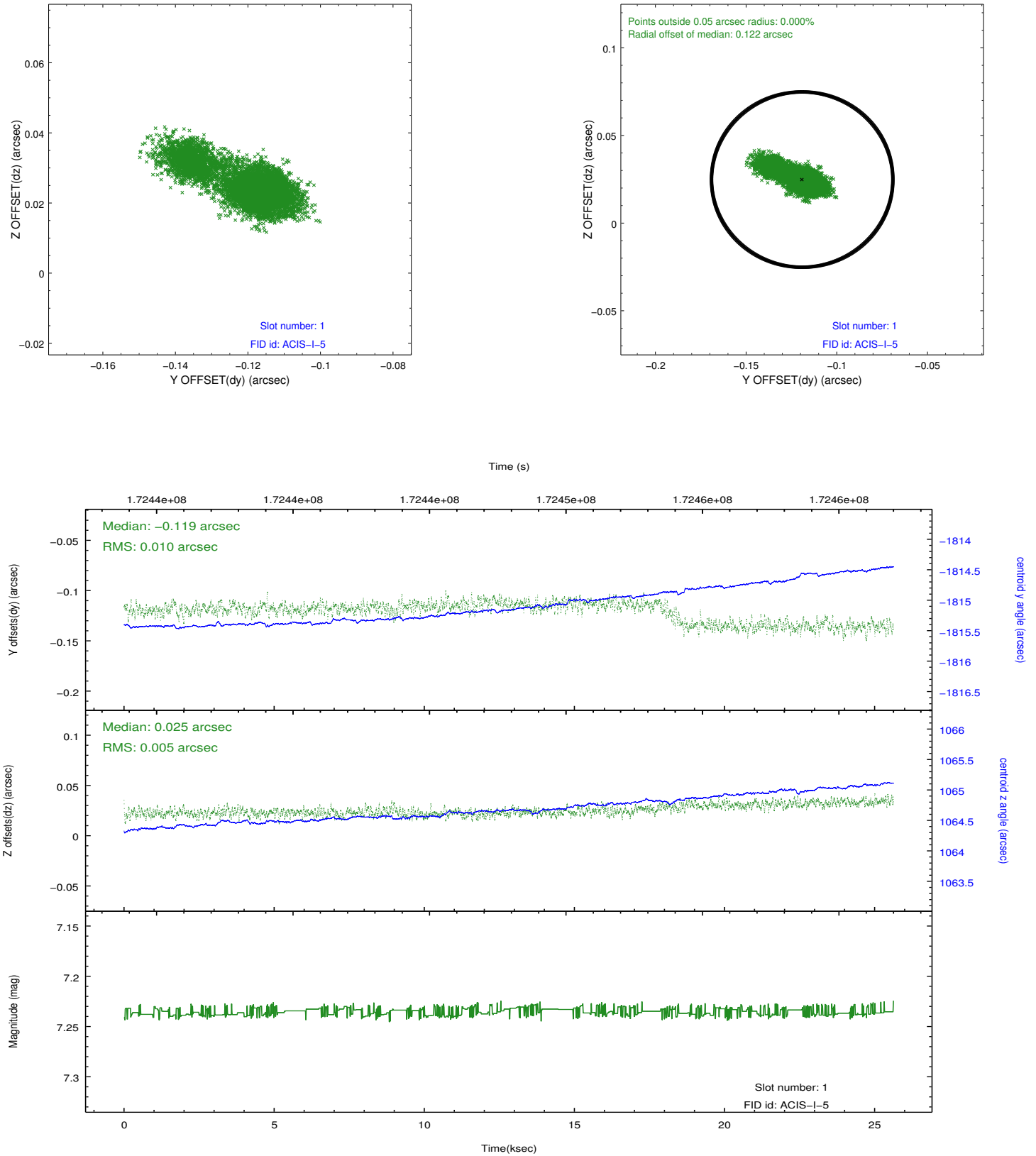


2.5 FID Slots

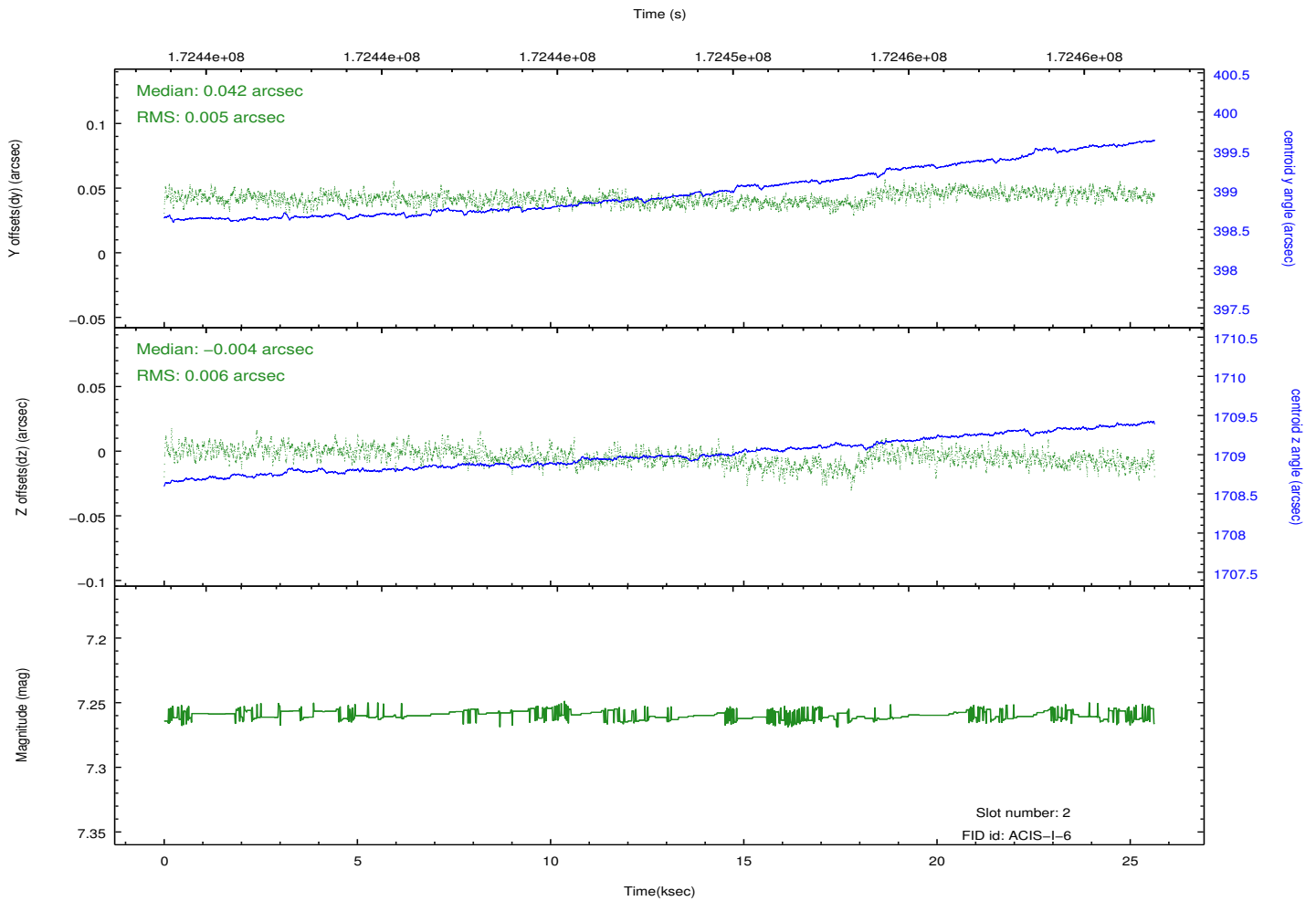
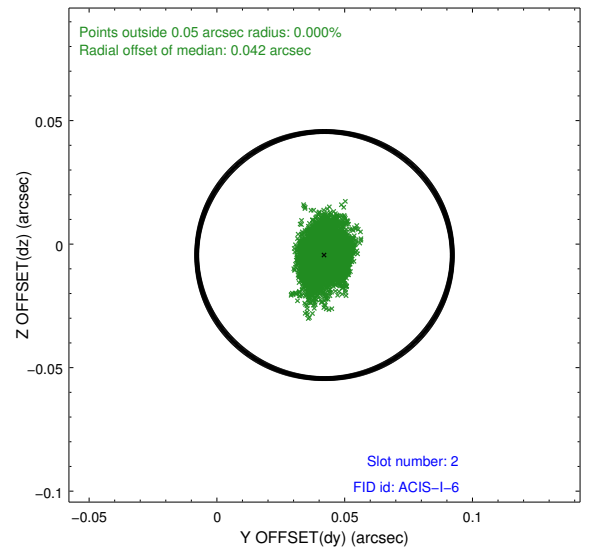
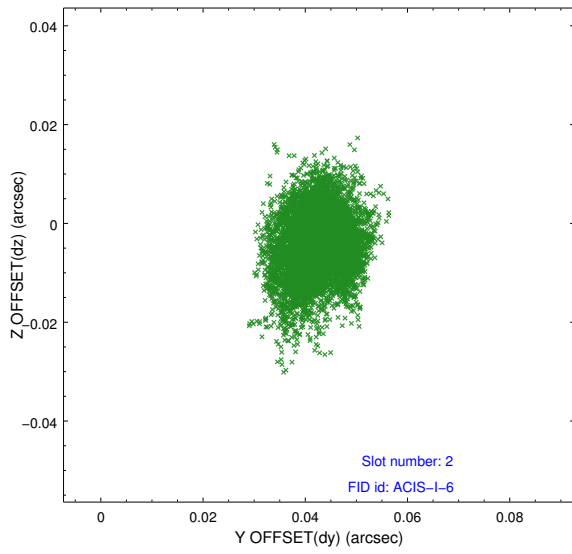
2.5.1 Slot 0



2.5.2 Slot 1



2.5.3 Slot 2



A Summary

A.1 Status

V&V Scientist	Jen Lauer
V&V Date (YYYY-MM-DD)	2012.11.15
V&V Edition	1
V&V Disposition and Status	OK
V&V Charge Time	25.119

A.2 Comments