

# V&V Reference Report

## L2 ASCDS Version : 8.4.5

Observation 3569 - L2 Version 3  
Chandra X-Ray Center

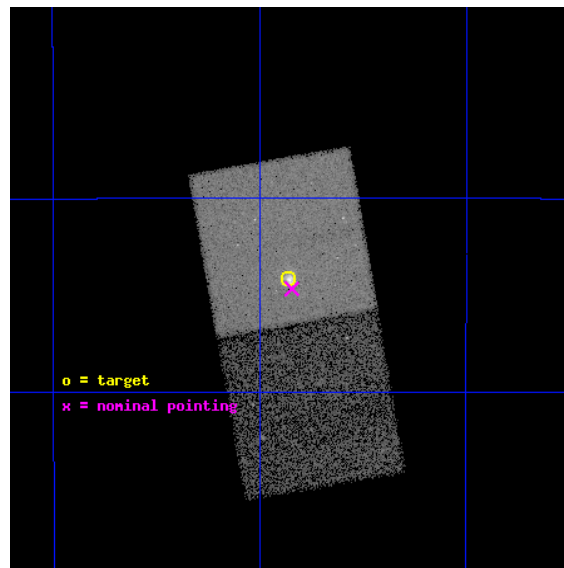
L2 Processing Date : Oct 28 2012

## Contents

<b>1</b>	<b>Front</b>	<b>2</b>
<b>2</b>	<b>OBI</b>	<b>3</b>
2.1	OBI . . . . .	3
2.1.1	Images . . . . .	3
2.1.2	Bias . . . . .	3
2.1.3	Parameters . . . . .	4
2.1.4	Events . . . . .	4
2.2	Compared Parameters . . . . .	5
2.3	Aspect . . . . .	6
2.4	Star Slots . . . . .	9
2.4.1	Slot 3 . . . . .	9
2.4.2	Slot 4 . . . . .	10
2.4.3	Slot 5 . . . . .	11
2.4.4	Slot 6 . . . . .	12
2.4.5	Slot 7 . . . . .	13
2.5	FID Slots . . . . .	14
2.5.1	Slot 0 . . . . .	14
2.5.2	Slot 1 . . . . .	15
2.5.3	Slot 2 . . . . .	16
<b>A</b>	<b>Summary</b>	<b>17</b>
A.1	Status . . . . .	17
A.2	Comments . . . . .	17

# 1 Front

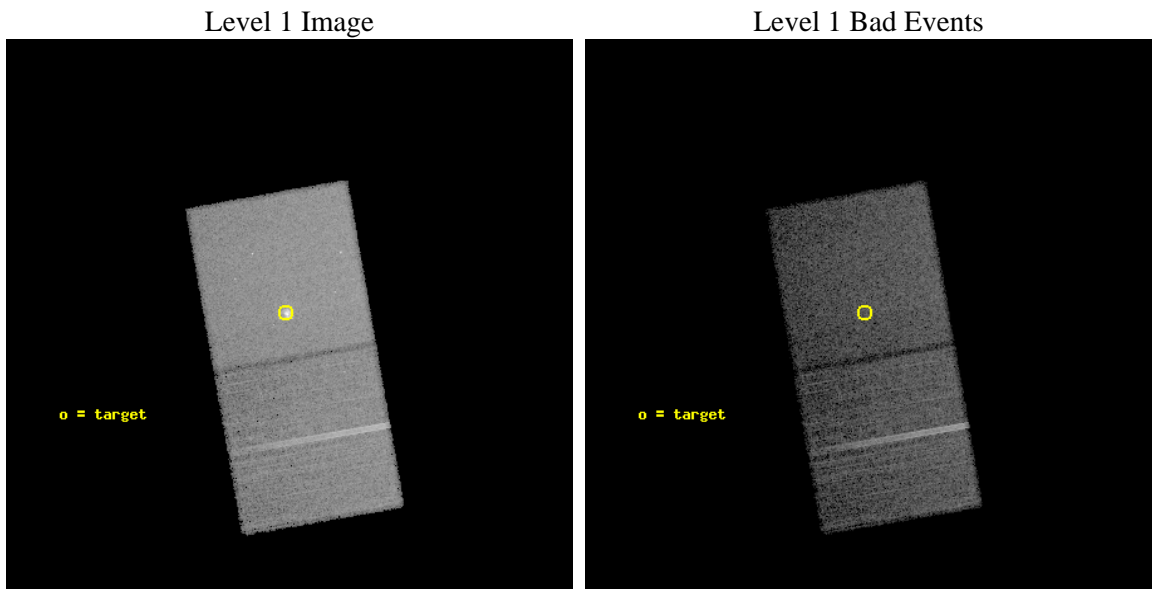
seq_num	700631	Sequence number
obs_id	3569	Observation id
title	NGC 4569 LINEAR	Proposal title
observer	Dr. Stephen Murray	Principal investigator
object	NGC 3256	Source name
dtycycle	0	&#160
cycle	P	events from which exps? Prim/Second/Both
ra_targ	156.965833	Observer's specified target RA [deg]
dec_targ	-43.902417	Observer's specified target Dec [deg]
ra_nom	156.96123285303	Nominal RA [deg]
dec_nom	-43.911462512936	Nominal Dec [deg]
roll_nom	259.98363091045	Nominal Roll [deg]
revision	3	Processing version of data
ontime	27579.0	Sum of GTIs [s]
livetime	27206.810827875	Livetime [s]
ontime6	27579.0	Sum of GTIs [s]
ontime7	27579.0	Sum of GTIs [s]
l2events	122011	Number of level 2 events



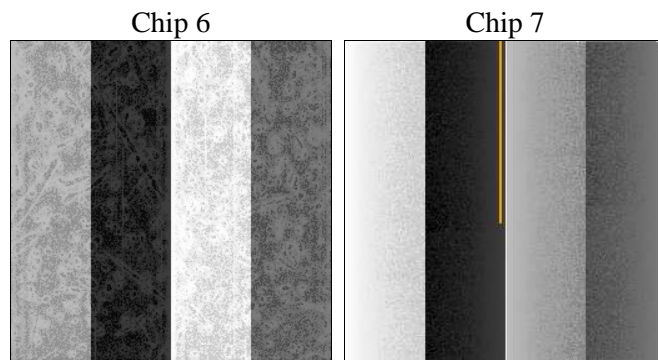
## 2 OBI

### 2.1 OBI

#### 2.1.1 Images



#### 2.1.2 Bias



### 2.1.3 Parameters

obi_num	0	Obi number	sched_exp_time	27192.000000	[s] Scheduled observation exposure time
ascdsver	8.4.5	Processing system revision	ontime	27579.0	Sum of GTIs [s]
caldbver	4.5.2	&#160	ontime6	27579.0	Sum of GTIs [s]
date	2012-10-28T13:31:50	Date and time of file creation	ontime7	27579.0	Sum of GTIs [s]
revision	3	Processing version of data	l1events	426965	Number of level 1 events

### 2.1.4 Events

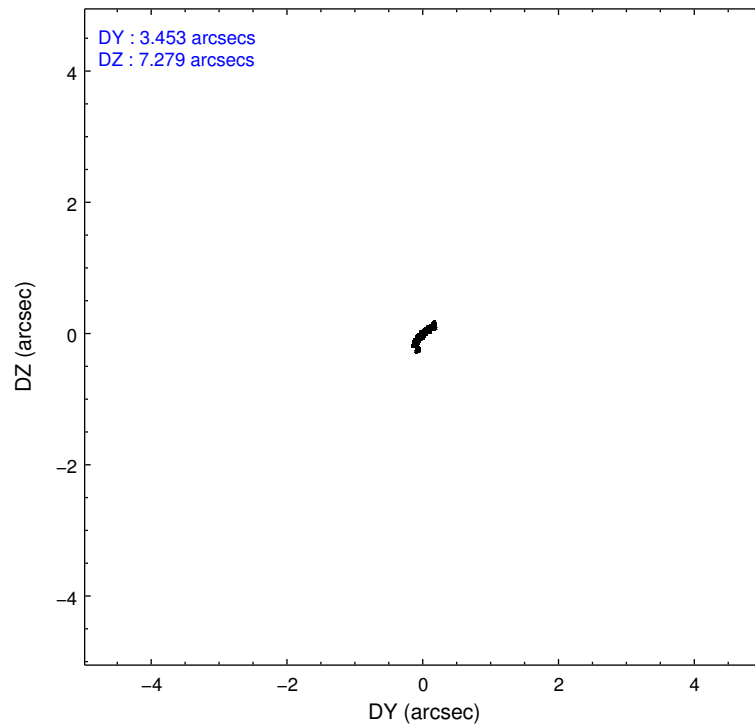
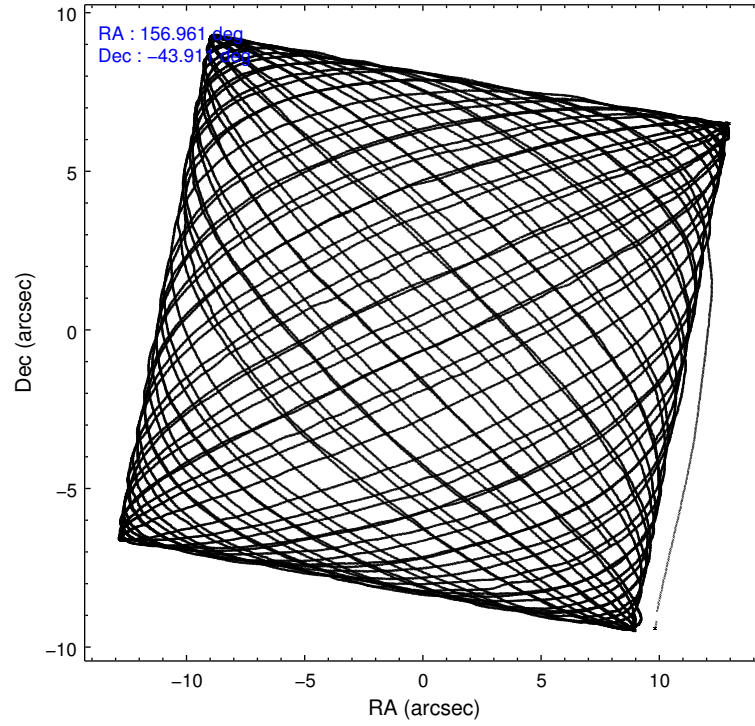
	ccd 6	ccd 7
level 1 events	183461	243504
rejected events	161671	138290
rejected %	88%	56%

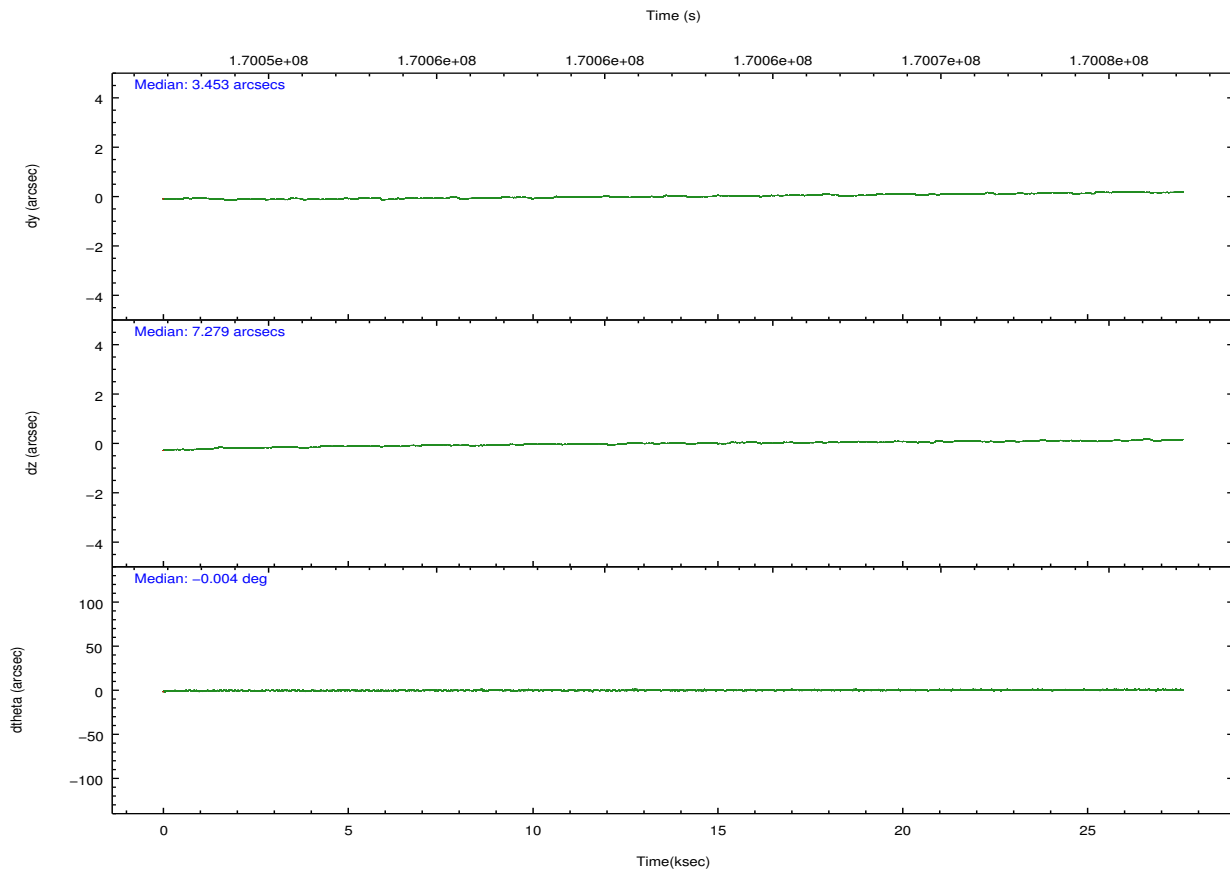
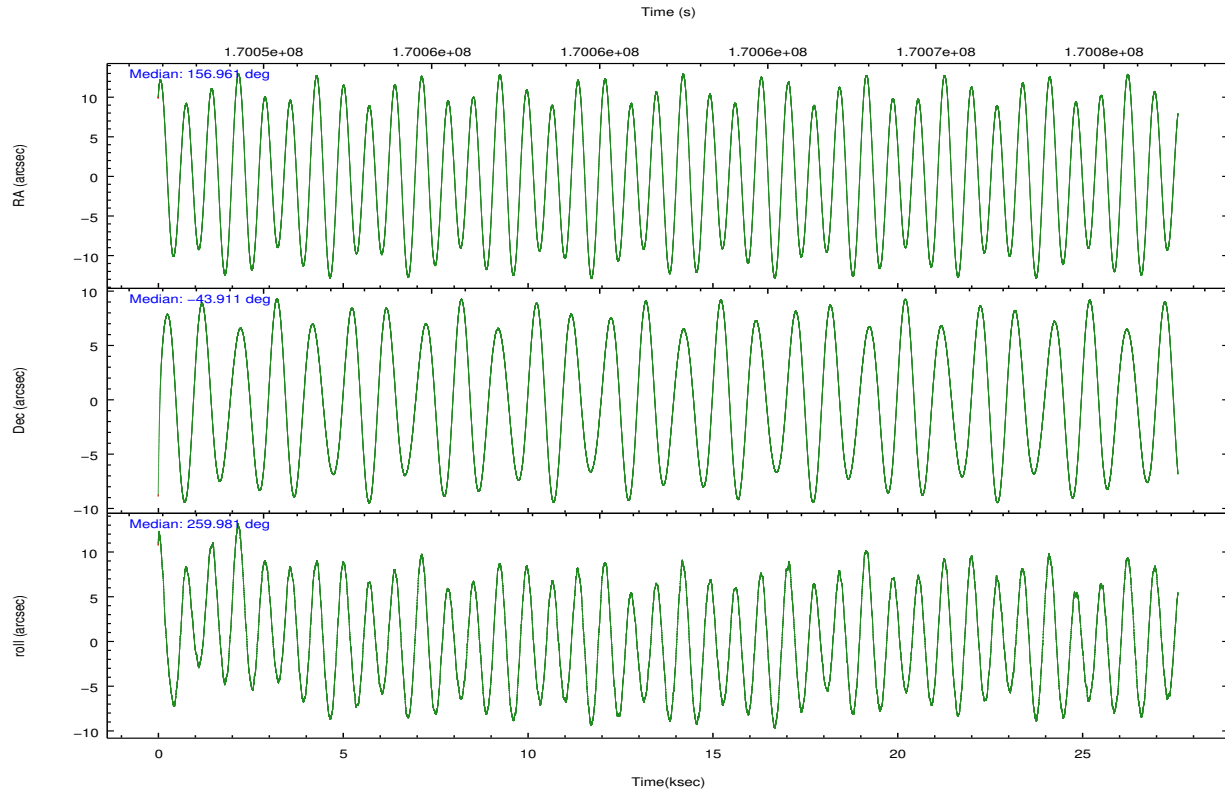
	ccd 6	ccd 7
grade 0 events	9134	11763
	4%	4%
grade 1 events	85	212
	0%	0%
grade 2 events	4201	21219
	2%	8%
grade 3 events	2113	9691
	1%	3%
grade 4 events	2164	9734
	1%	3%
grade 5 events	8007	22372
	4%	9%
grade 6 events	4279	53295
	2%	21%
grade 7 events	153478	115218
	83%	47%

## 2.2 Compared Parameters

Parameter	Planned	Actual	Parameter	Planned	Actual
Instrument	ACIS	ACIS	Obspar format version number	7	7
Detector	ACIS-67	ACIS-67	Obspar file type	PREDICTED	ACTUAL
Grating	NONE	NONE	Obspar update status	NONE	UPDATED
Data mode	VFAINT	VFAINT	Number of optional ACIS chips dropped	0	0
Observation mode	POINTING	POINTING	On-chip summing requested	N	N
[deg] Pointing RA	156.947819	156.9612328530305	Subarray requested	NONE	NONE
[deg] Pointing Dec	-43.886033	-43.91146251293632	Alternating exposures requested	N	N
[deg] Pointing Roll	259.817704	259.9836309104548	[s] Primary exposure time	0.000000	3
[mm] SIM focus pos	-0.684267	-0.6828225247311905			
[mm] SIM defocus	0	0.001444936568705701			
[mm] SIM translation stage pos	-190.132523	-190.1425803651734			
[mm] SIM translation stage offset	0	0.01005778216563158			
[s] Observation start time (MET)	170048627.184000	170047551.93431			
Observation start date	2003-05-23T03:42:43	2003-05-23T03:25:51			
[s] Observation end time (MET)	170075819.184000	170076824.91055			
Observation end date	2003-05-23T11:15:55	2003-05-23T11:33:44			
Read mode	TIMED	TIMED			

## 2.3 Aspect



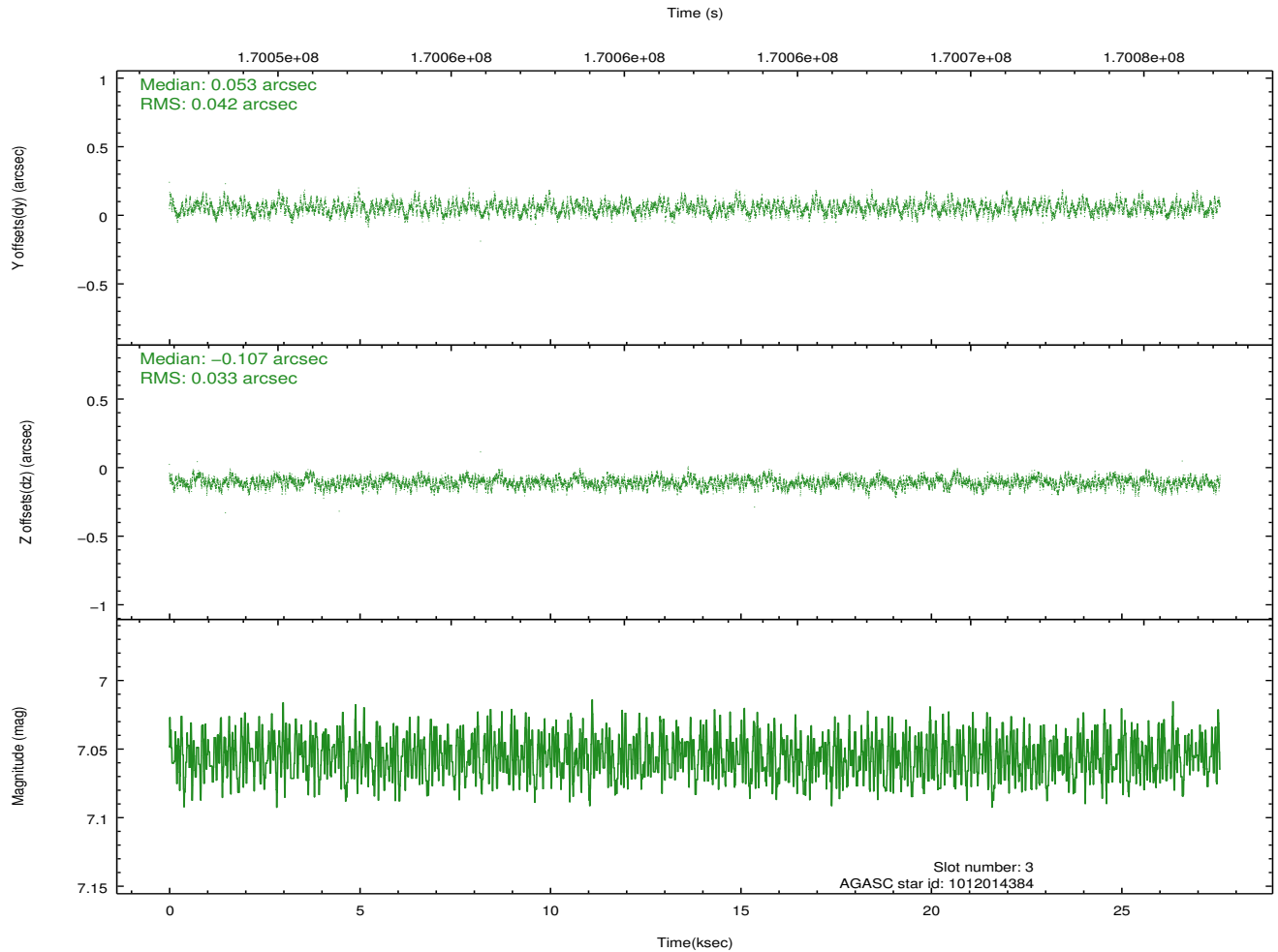
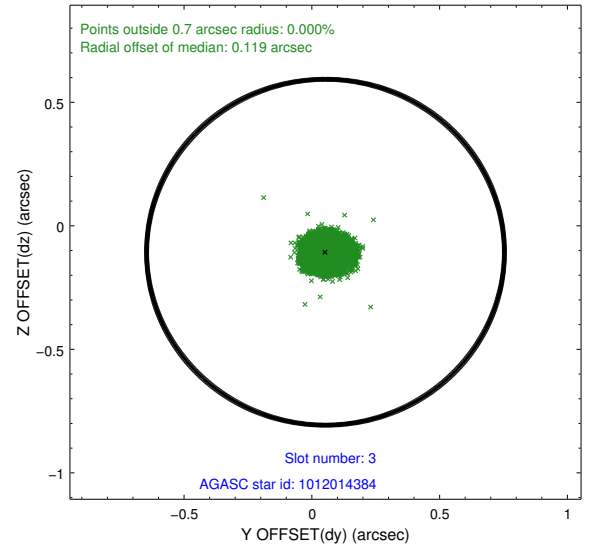
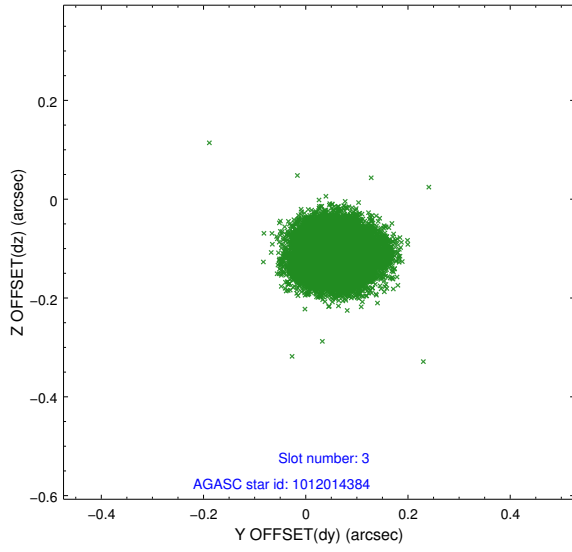


### Slot Statistics

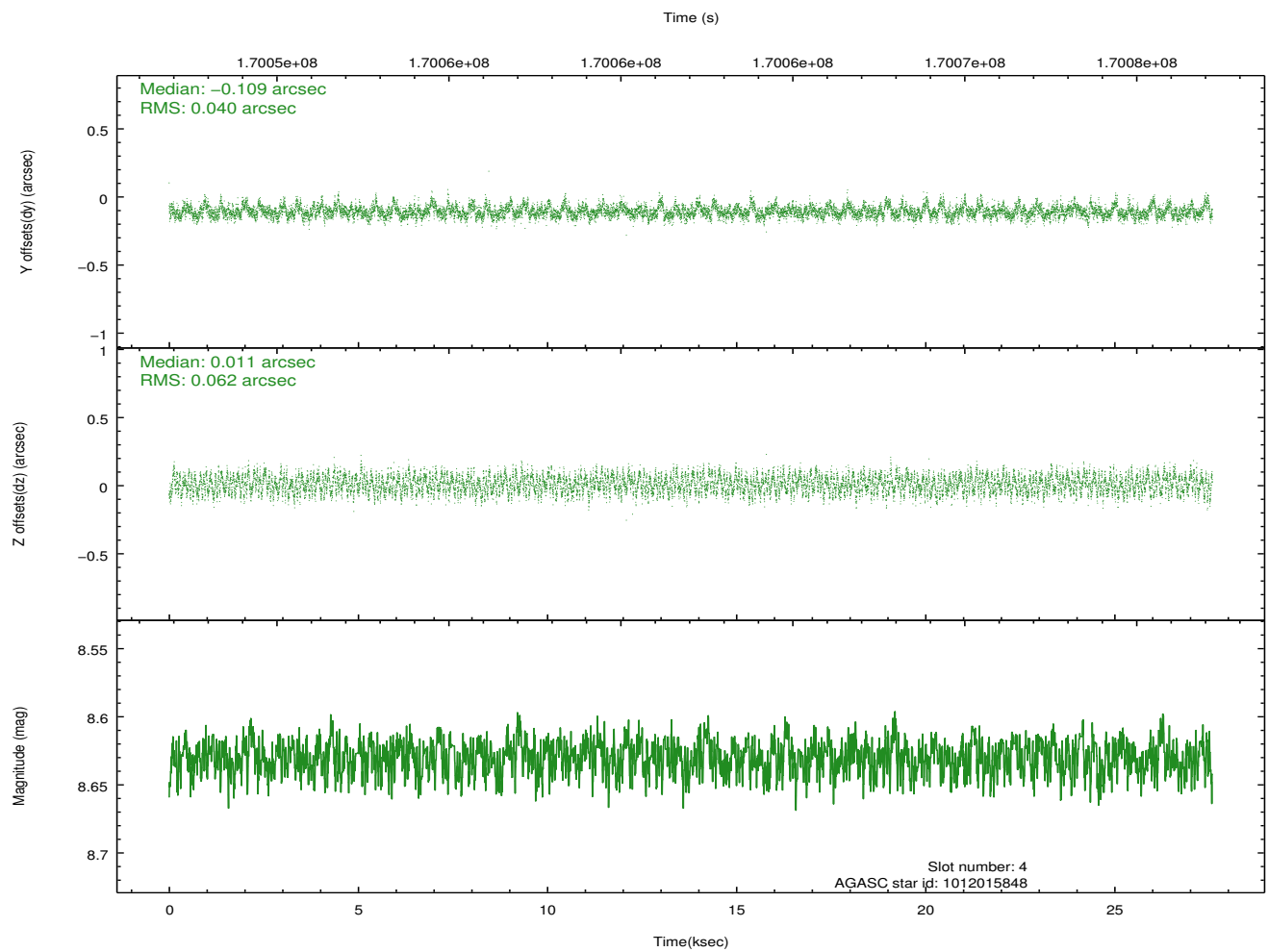
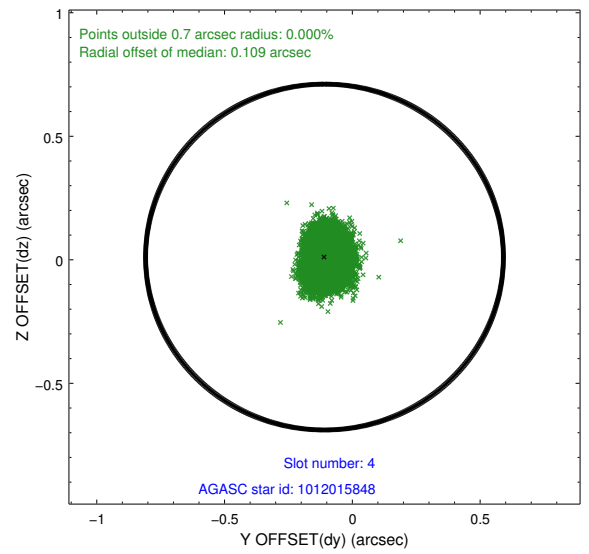
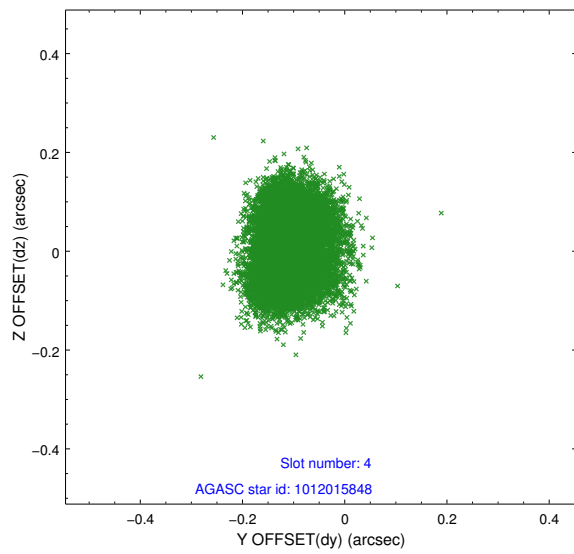
slot	status	id	mag	n_pts	med_dy	med_dz	dr1	dr2	ra	dec	mean_y	mean_z
0	FID	ACIS-S-2	7.12	6728	-0.016	-0.005	0.007	0.012	0.000000	0.000000	-756.13	-1728.39
1	FID	ACIS-S-4	7.20	6728	0.020	0.009	0.006	0.012	0.000000	0.000000	2157.13	180.02
2	FID	ACIS-S-5	7.24	6724	-0.035	0.005	0.008	0.015	0.000000	0.000000	-1808.88	173.78
3	GUIDE	1012014384	7.06	13452	0.053	-0.107	0.058	0.090	156.922596	-44.342264	1628.56	226.57
4	GUIDE	1012015848	8.63	13456	-0.109	0.011	0.080	0.124	156.259270	-43.459488	-1185.40	-2040.93
5	GUIDE	1012021624	7.79	13453	0.017	-0.006	0.079	0.124	156.050924	-44.038227	962.52	-2185.47
6	GUIDE	1012025440	9.14	13451	0.066	0.141	0.089	0.139	156.542398	-44.472818	2266.38	-651.02
7	GUIDE	1012017064	7.11	13456	-0.036	-0.037	0.066	0.111	157.176692	-43.838343	-272.71	554.67

## 2.4 Star Slots

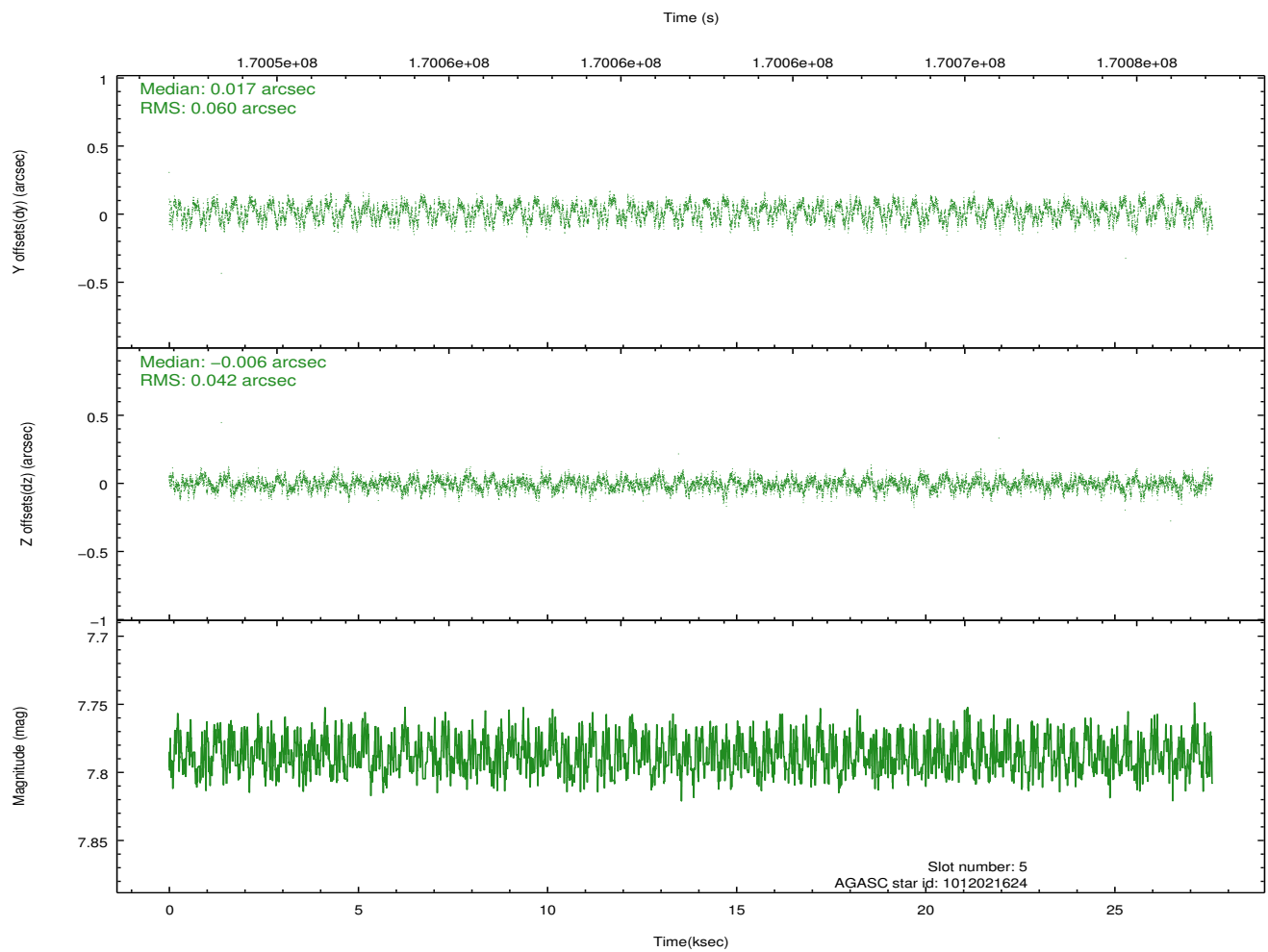
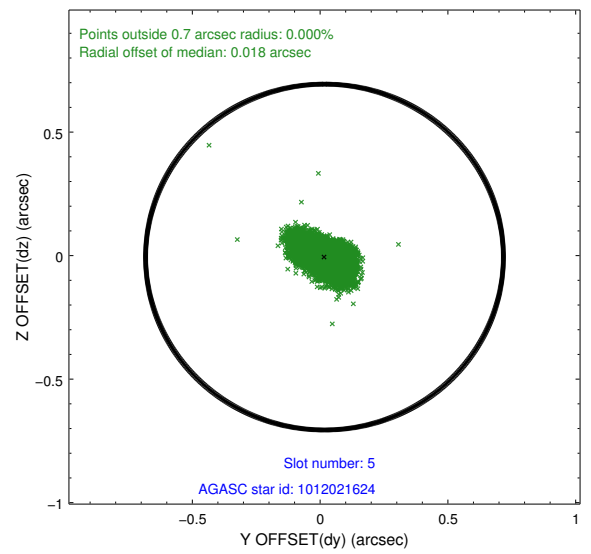
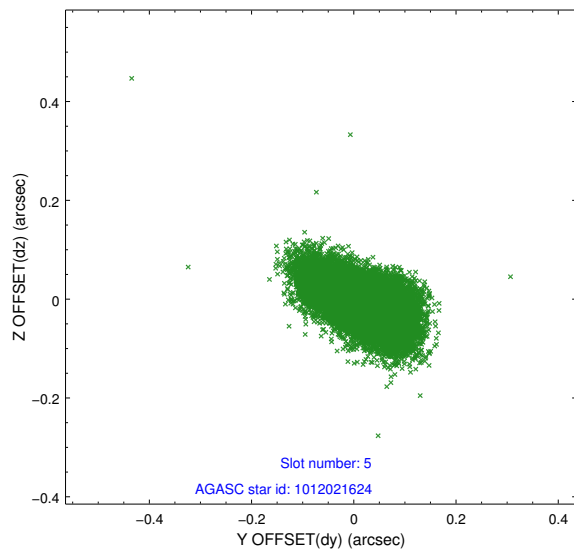
### 2.4.1 Slot 3



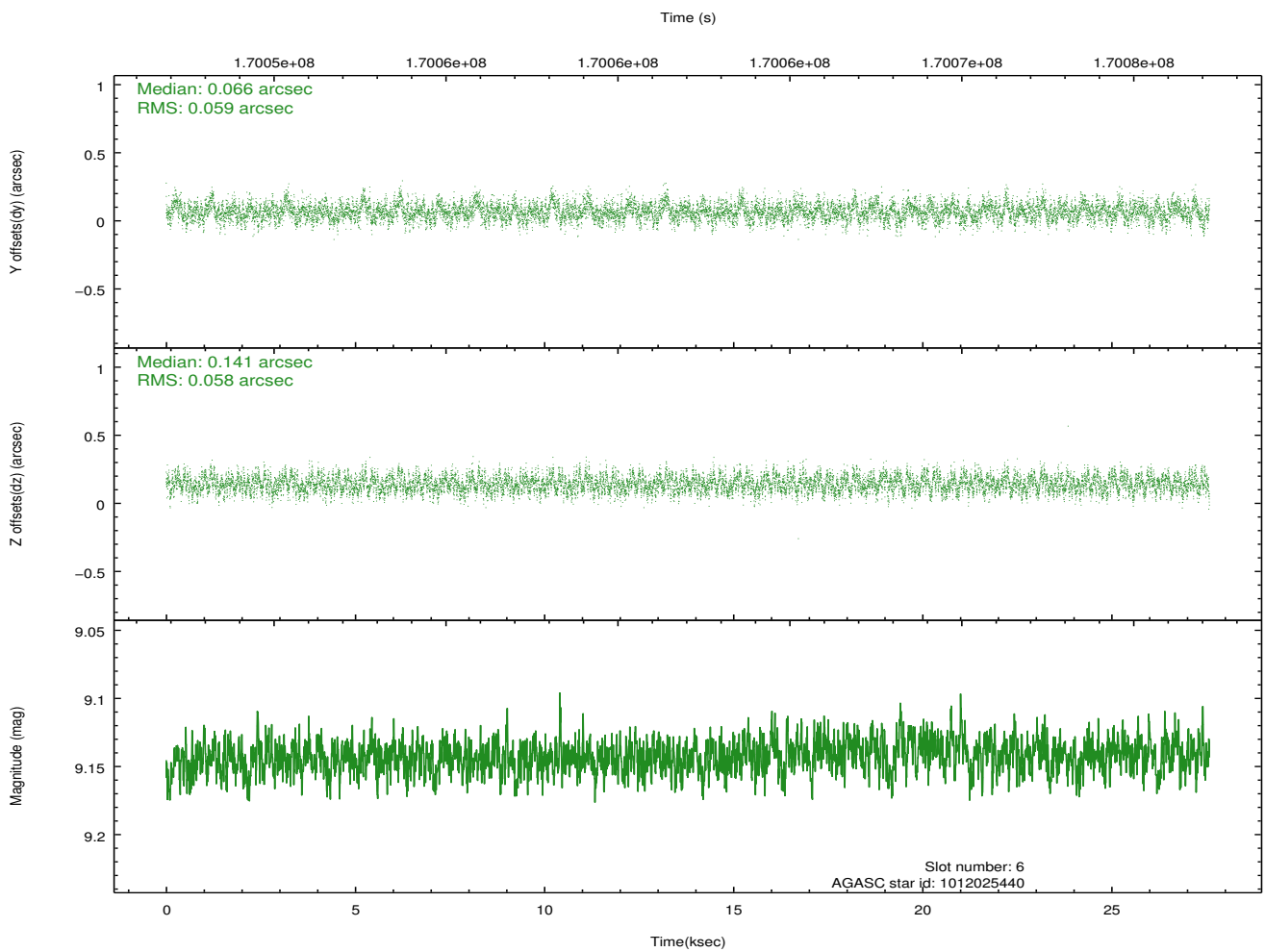
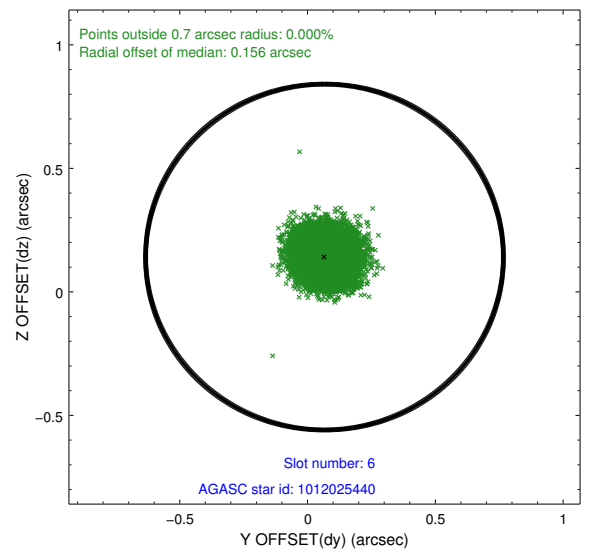
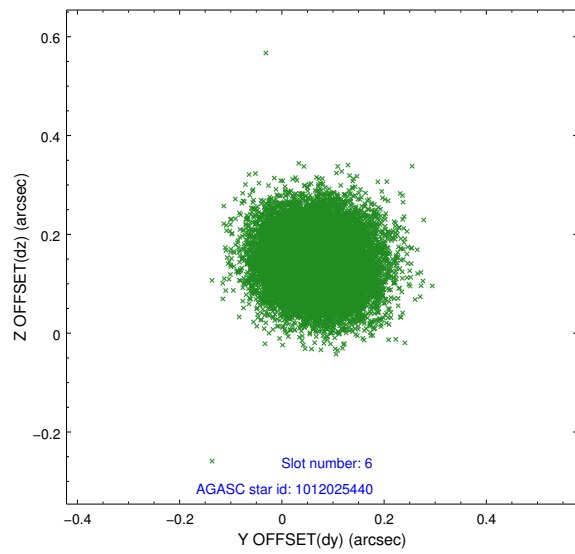
## 2.4.2 Slot 4



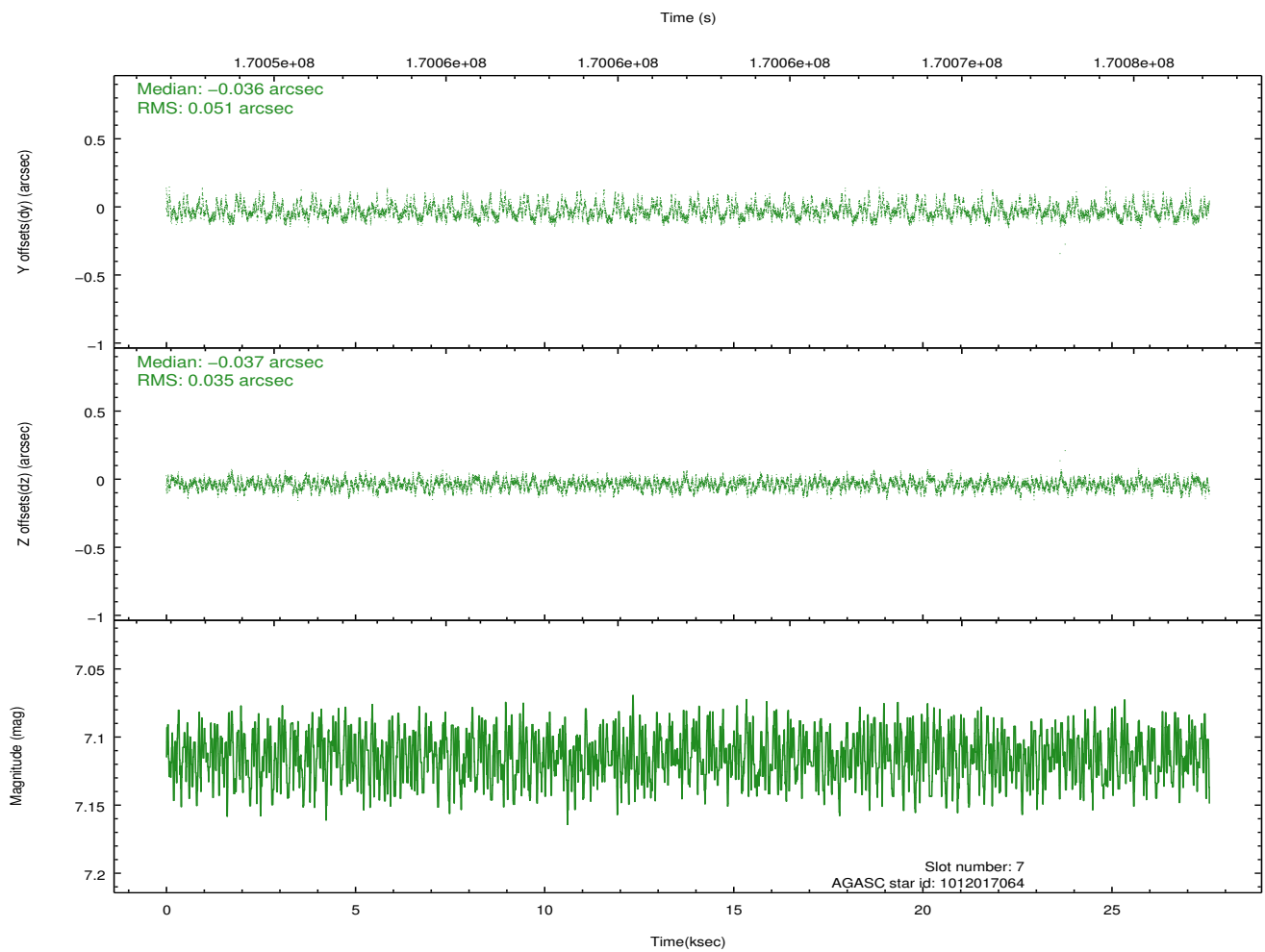
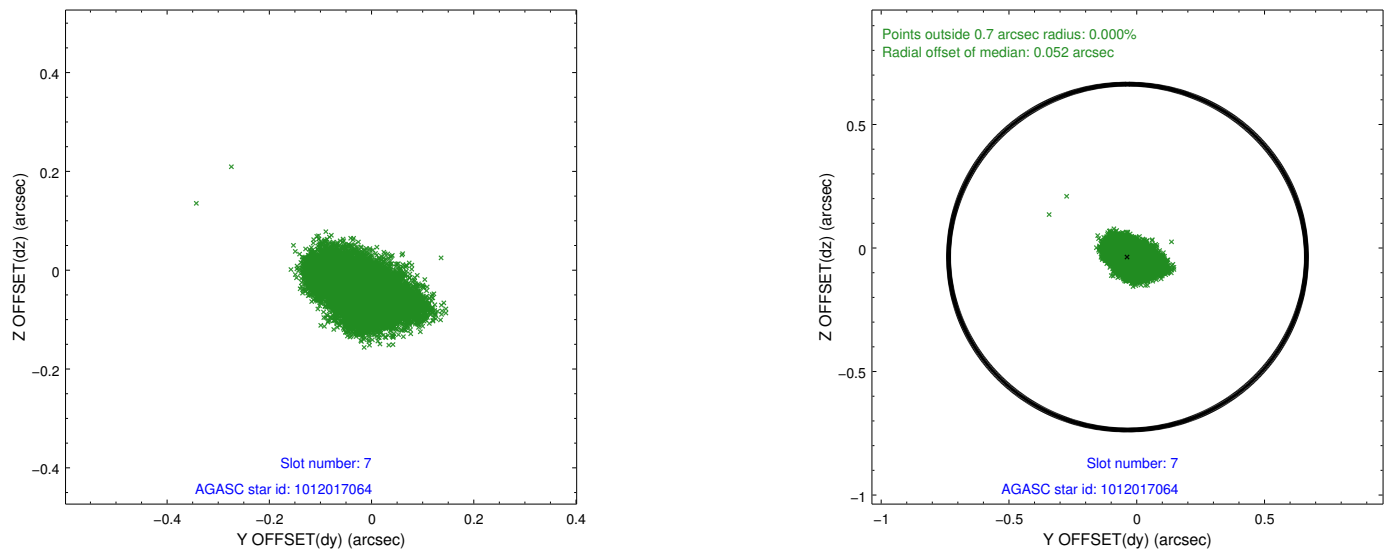
### 2.4.3 Slot 5



## 2.4.4 Slot 6

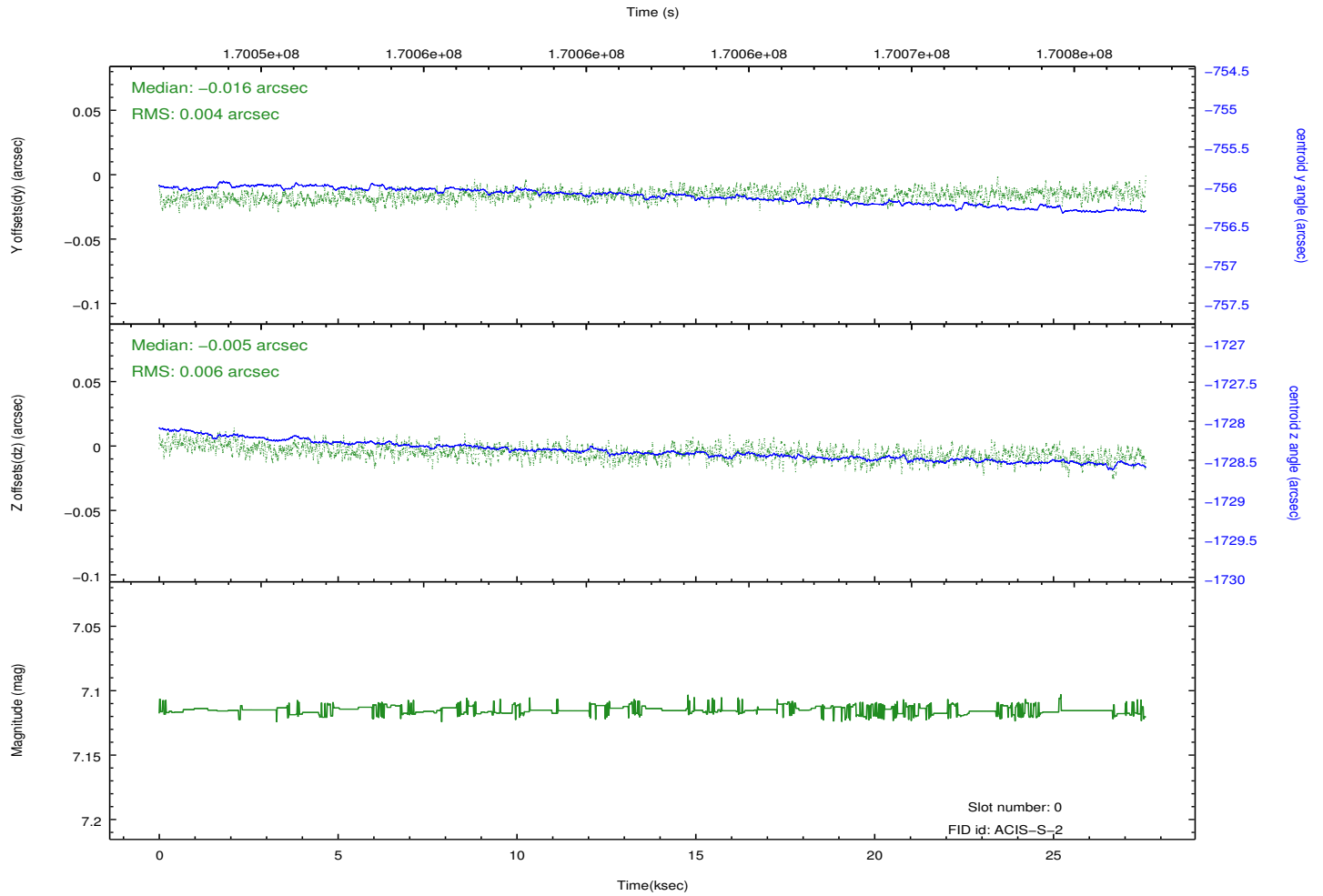
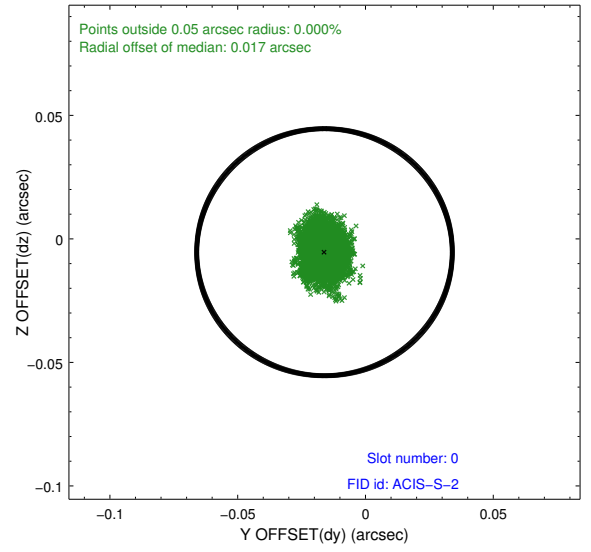
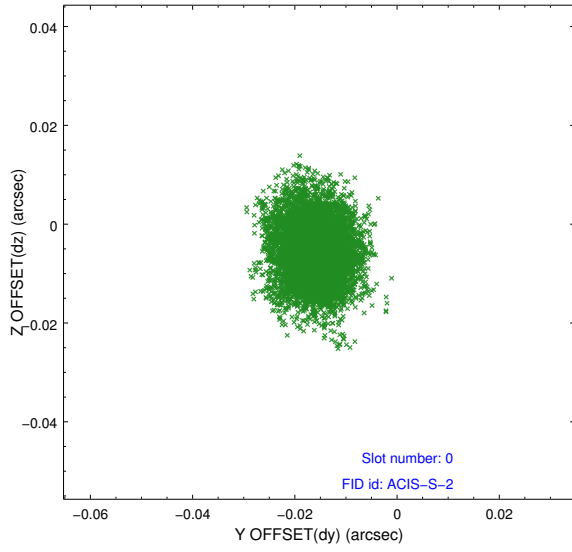


## 2.4.5 Slot 7

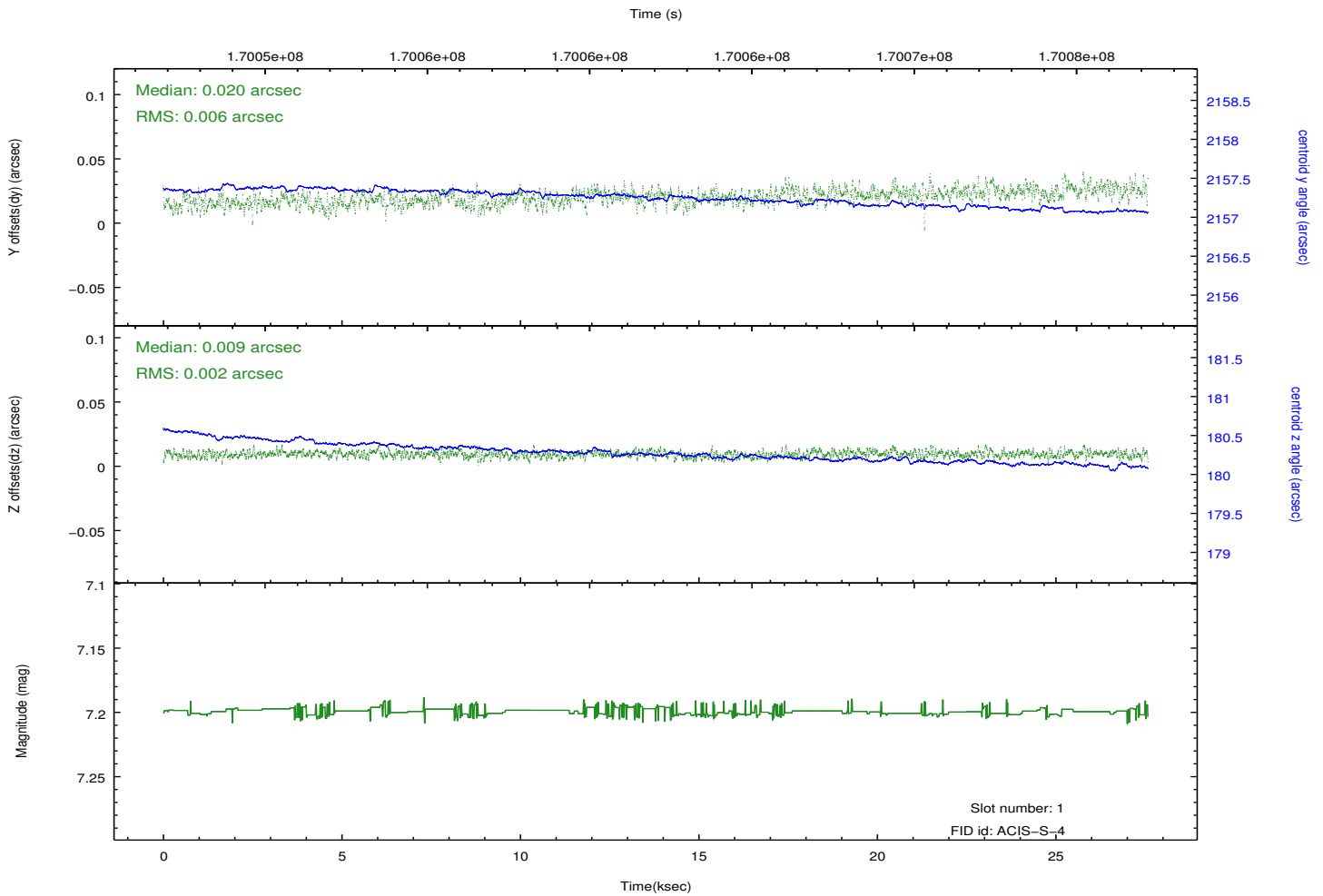
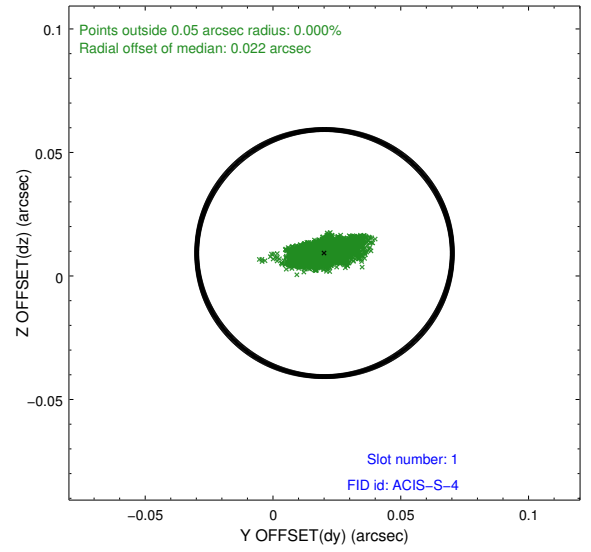
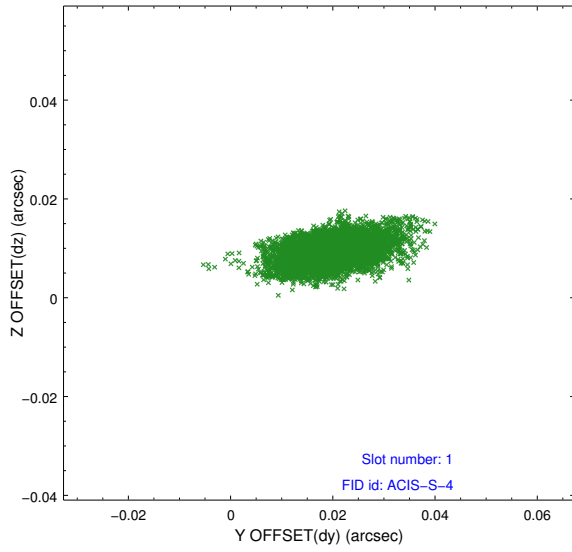


## 2.5 FID Slots

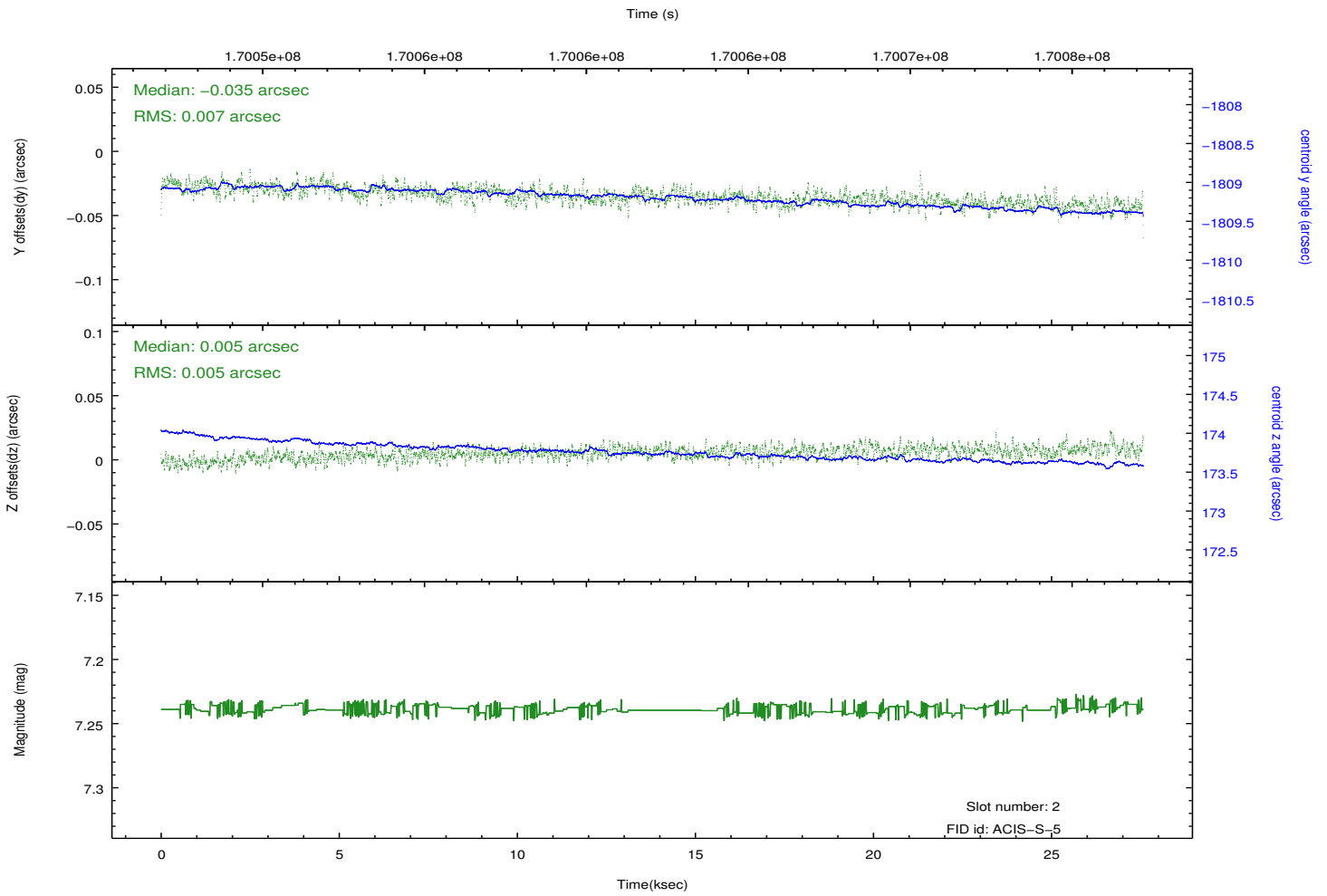
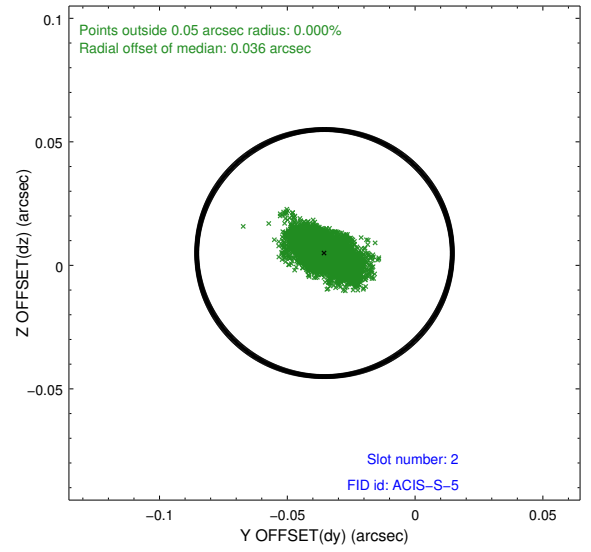
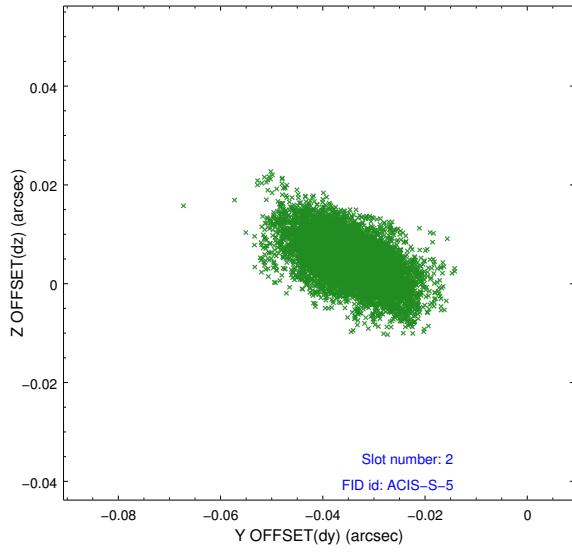
### 2.5.1 Slot 0



## 2.5.2 Slot 1



### 2.5.3 Slot 2



# A Summary

## A.1 Status

V&V Scientist	Jen Lauer
V&V Date (YYYY-MM-DD)	2012.11.15
V&V Edition	1
V&V Disposition and Status	OK
V&V Charge Time	27.579

## A.2 Comments