

V&V Reference Report

L2 ASCDS Version : 8.4.5

Observation 3669 - L2 Version 3
Chandra X-Ray Center

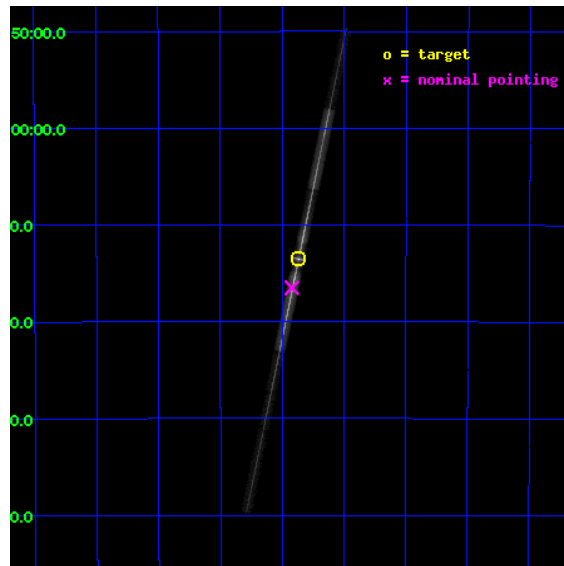
L2 Processing Date : Oct 9 2012

Contents

1	Front	2
2	OBI	3
2.1	OBI	3
2.1.1	Images	3
2.1.2	Bias	3
2.1.3	Parameters	4
2.1.4	Events	4
2.2	Compared Parameters	5
2.3	Aspect	6
2.4	Star Slots	9
2.4.1	Slot 3	9
2.4.2	Slot 4	10
2.4.3	Slot 5	11
2.4.4	Slot 6	12
2.4.5	Slot 7	13
2.5	FID Slots	14
2.5.1	Slot 0	14
2.5.2	Slot 1	15
2.5.3	Slot 2	16
3	Gratings	17
3.1	LETG Arm	17
A	Summary	19
A.1	Status	19
A.2	Comments	19

1 Front

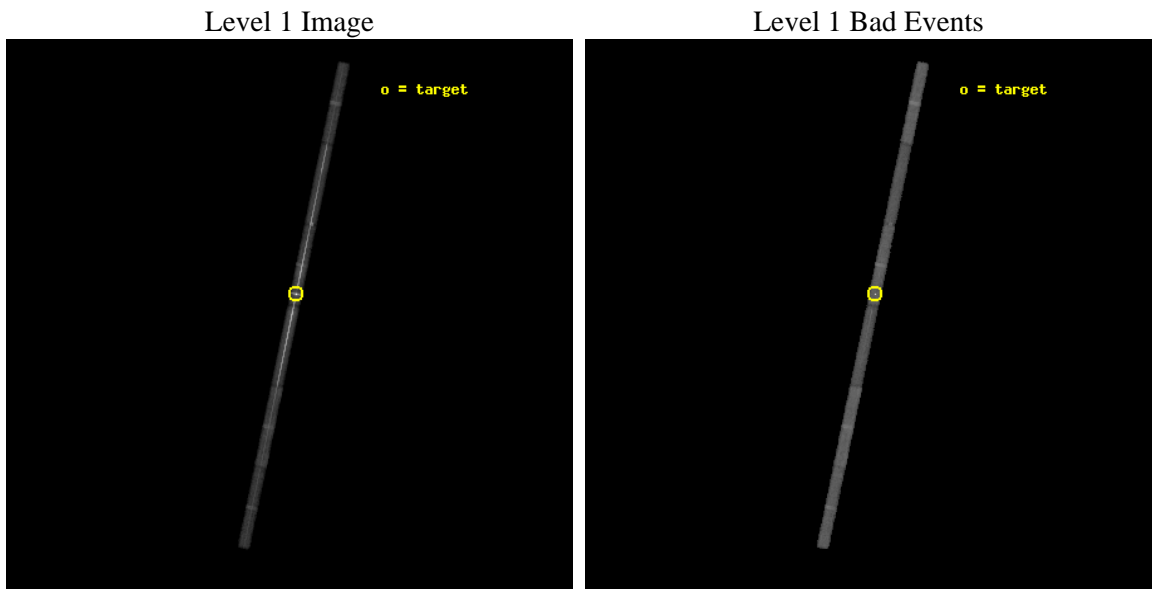
seq_num	790081	Sequence number
obs_id	3669	Observation id
title	INVESTIGATING THE CONTAMINATION BUILD-UP ON ACIS	Proposal title
observer	Dr. CXC Calibration	Principal investigator
object	PKS2155-304	Source name
dtycycle	0	
cycle	P	events from which exps? Prim/Second/Both
ra_targ	329.716667	Observer's specified target RA [deg]
dec_targ	-30.225556	Observer's specified target Dec [deg]
ra_nom	329.73048490919	Nominal RA [deg]
dec_nom	-30.27511010983	Nominal Dec [deg]
roll_nom	101.81043775212	Nominal Roll [deg]
revision	3	Processing version of data
ontime	44915.985286653	Sum of GTIs [s]
livetime	42428.464996029	Livetime [s]
ontime4	44916.108406663	Sum of GTIs [s]
ontime5	44915.285316557	Sum of GTIs [s]
ontime6	44915.985286653	Sum of GTIs [s]
ontime7	44916.06736666	Sum of GTIs [s]
ontime8	44915.94424665	Sum of GTIs [s]
ontime9	44916.644246697	Sum of GTIs [s]
l2events	690250	Number of level 2 events



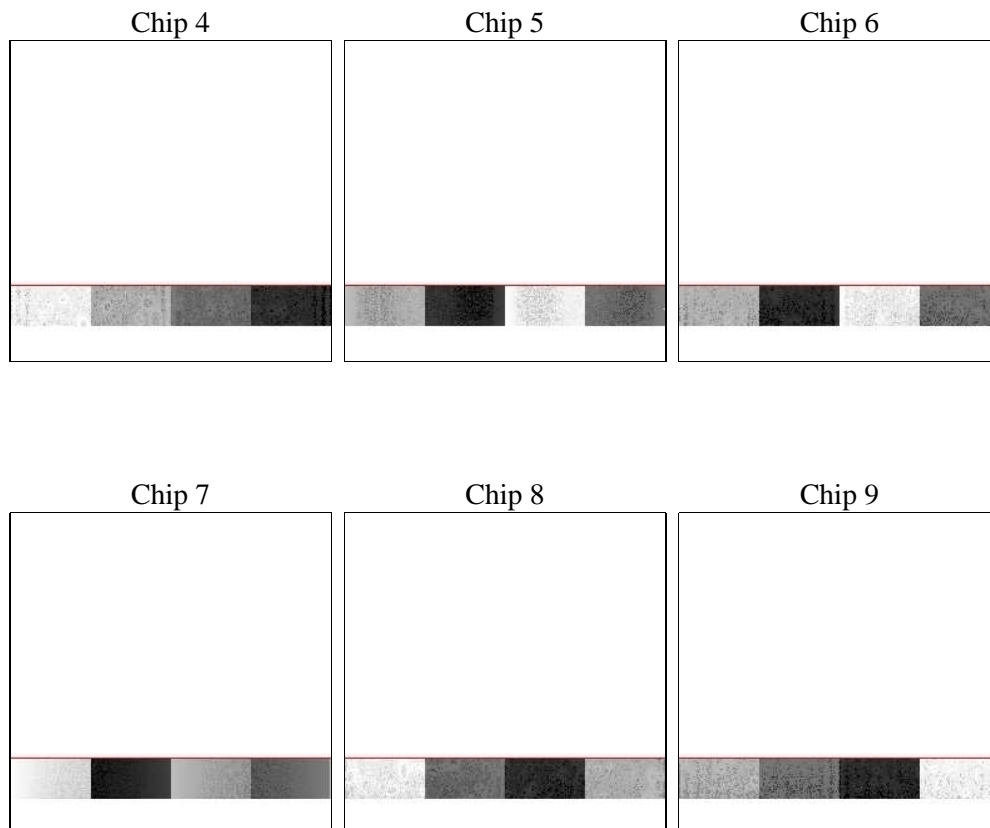
2 OBI

2.1 OBI

2.1.1 Images



2.1.2 Bias



2.1.3 Parameters

obi_num	0	Obi number	sched_exp_time	45147.563000	[s] Scheduled observation exposure time
ascdsver	8.4.5	Processing system revision	ontime	44915.985286653	Sum of GTIs [s]
caldbver	4.5.2	 	ontime4	44916.108406663	Sum of GTIs [s]
date	2012-10-09T05:03:22	Date and time of file creation	ontime5	44915.285316557	Sum of GTIs [s]
revision	3	Processing version of data	ontime6	44915.985286653	Sum of GTIs [s]
			ontime7	44916.067366666	Sum of GTIs [s]
			ontime8	44915.94424665	Sum of GTIs [s]
			ontime9	44916.644246697	Sum of GTIs [s]
			l1events	996467	Number of level 1 events

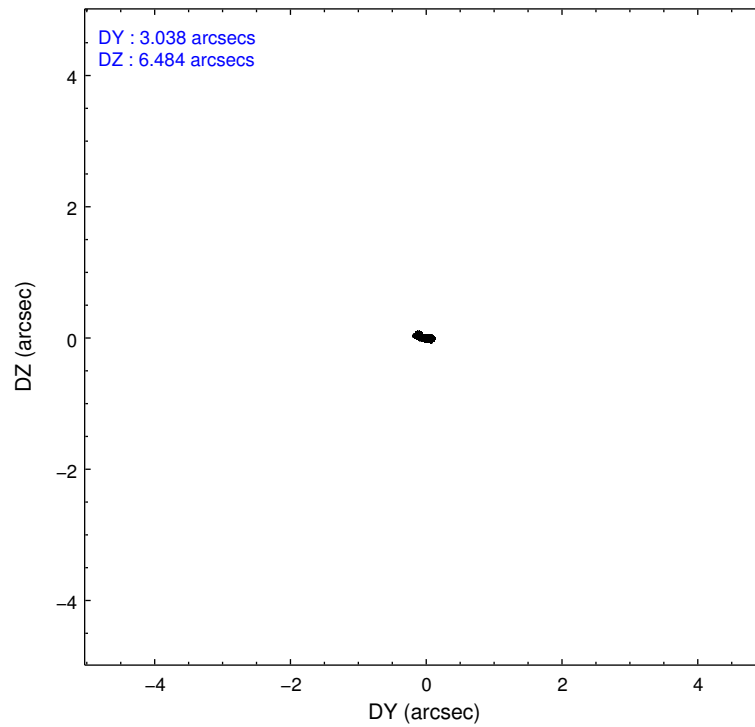
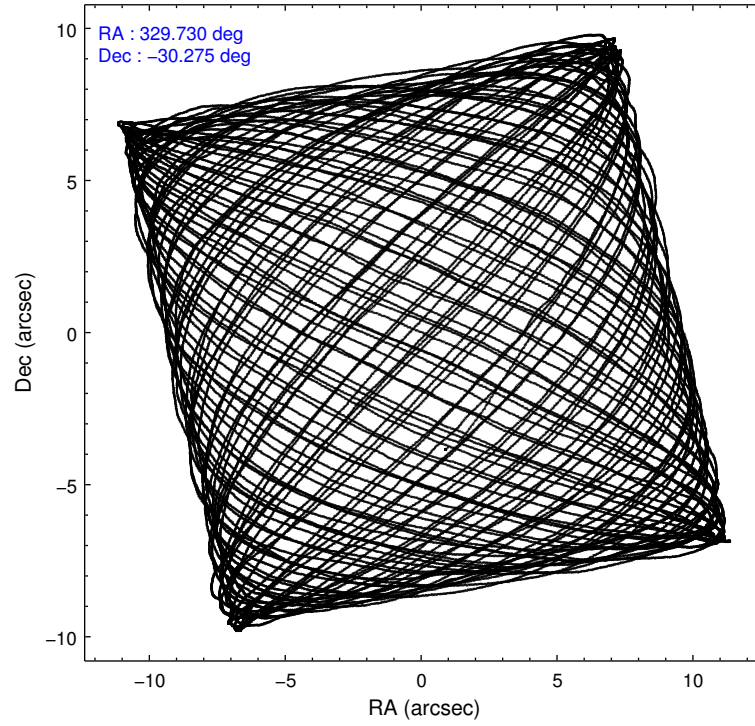
2.1.4 Events

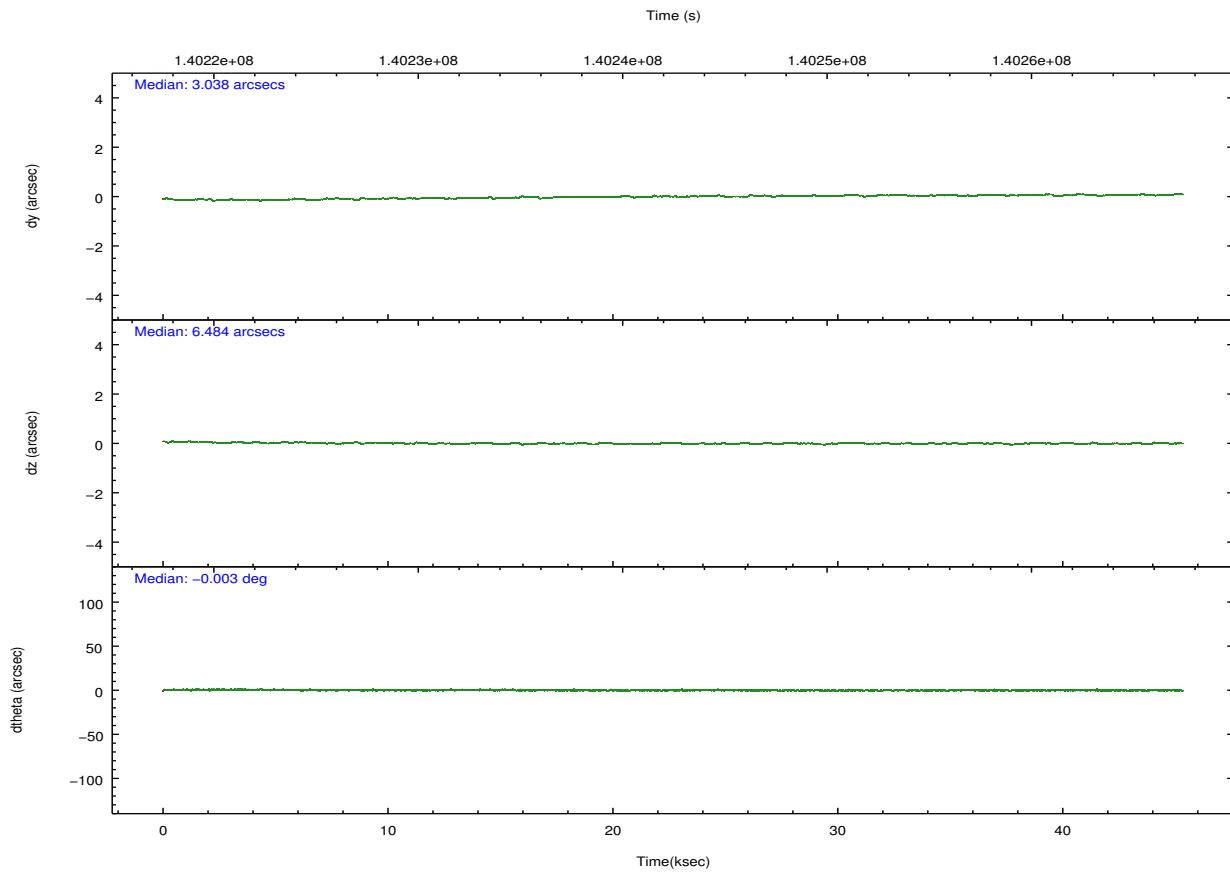
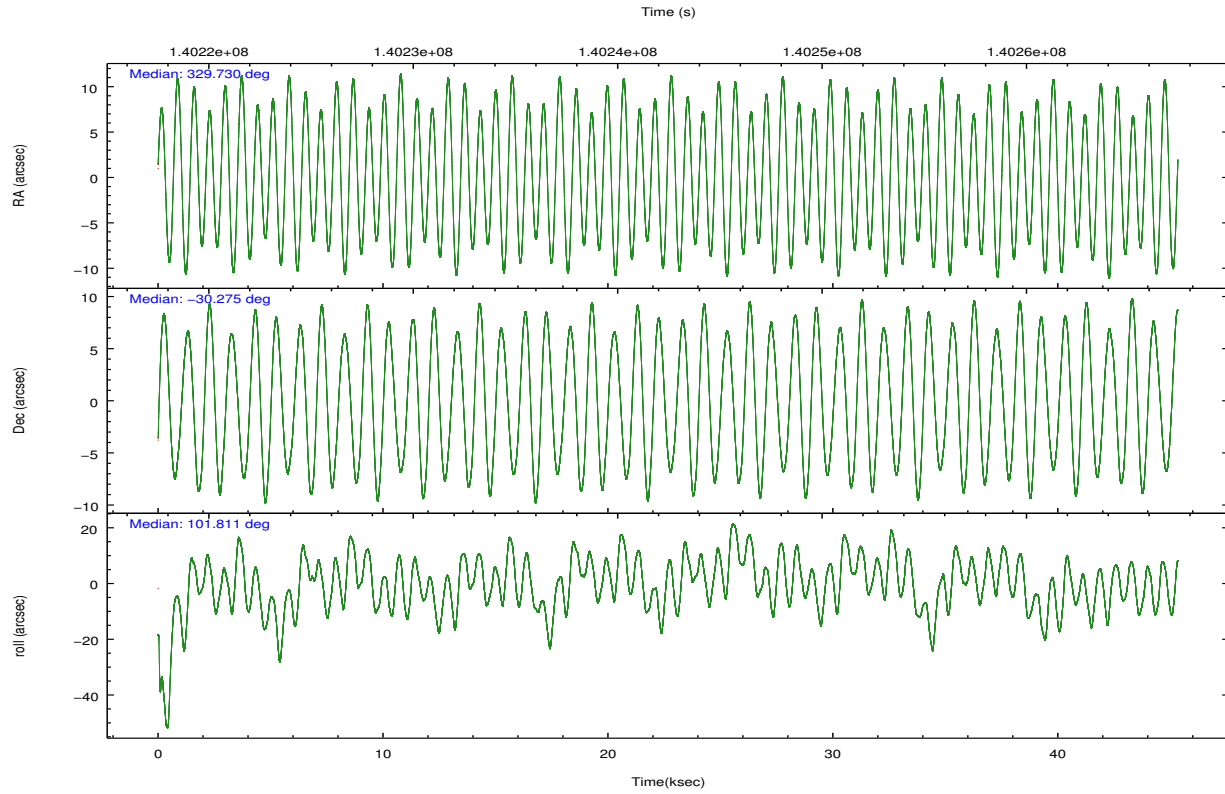
	ccd 4	ccd 5	ccd 6	ccd 7	ccd 8	ccd 9		ccd 4	ccd 5	ccd 6	ccd 7	ccd 8	ccd 9
level 1 events	61111	132337	382040	294427	77881	48671	grade 0 events	7633	53140	231685	77553	14033	6380
rejected events	48932	27926	74940	29146	53674	38228		12%	40%	60%	26%	18%	13%
rejected %	80%	21%	19%	9%	68%	78%	grade 1 events	16	471	16391	210	22	14
								0%	0%	4%	0%	0%	0%
							grade 2 events	1632	20368	36571	68837	3069	1212
								2%	15%	9%	23%	3%	2%
							grade 3 events	987	7871	13348	31921	1932	1003
								1%	5%	3%	10%	2%	2%
							grade 4 events	940	8031	13466	31138	1738	933
								1%	6%	3%	10%	2%	1%
							grade 5 events	1325	5126	10639	6057	1864	1424
								2%	3%	2%	2%	2%	2%
							grade 6 events	987	15005	12034	55838	3435	916
								1%	11%	3%	18%	4%	1%
							grade 7 events	47591	22325	47906	22873	51788	36789
								77%	16%	12%	7%	66%	75%

2.2 Compared Parameters

Parameter	Planned	Actual	Parameter	Planned	Actual
Instrument	ACIS	ACIS	Obspar format version number	7	7
Detector	ACIS-456789	ACIS-456789	Obspar file type	PREDICTED	ACTUAL
Grating	LETG	LETG	Obspar update status	NONE	UPDATED
Data mode	FAINT	FAINT	Number of optional ACIS chips dropped	0	0
Observation mode	POINTING	POINTING	On-chip summing requested	N	N
[deg] Pointing RA	329.751818	329.7304849091935	Subarray requested	CUSTOM	1/8
[deg] Pointing Dec	-30.295191	-30.27511010982959	Subarray start row	113	113
[deg] Pointing Roll	101.664575	101.8104377521234	Subarray row count	128	128
[s] Window start time (MET)	140054464.184000	140054464.184000	Alternating exposures requested	N	N
[s] Window stop time (MET)	143683264.184000	143683264.184000	[s] Primary exposure time	0.000000	0.7
[mm] SIM focus pos	-0.684267	-0.6828225247311905			
[mm] SIM defocus	0	0.001444936568705701			
[mm] SIM translation stage pos	-182.132523	-182.1370004450064			
[mm] SIM translation stage offset	-8	-7.995522138001405			
[s] Observation start time (MET)	140219985.184000	140219519.22893			
Observation start date	2002-06-11T21:58:41	2002-06-11T21:51:59			
[s] Observation end time (MET)	140265133.184000	140265447.94331			
Observation end date	2002-06-12T10:31:09	2002-06-12T10:37:27			
Read mode	TIMED	TIMED			

2.3 Aspect



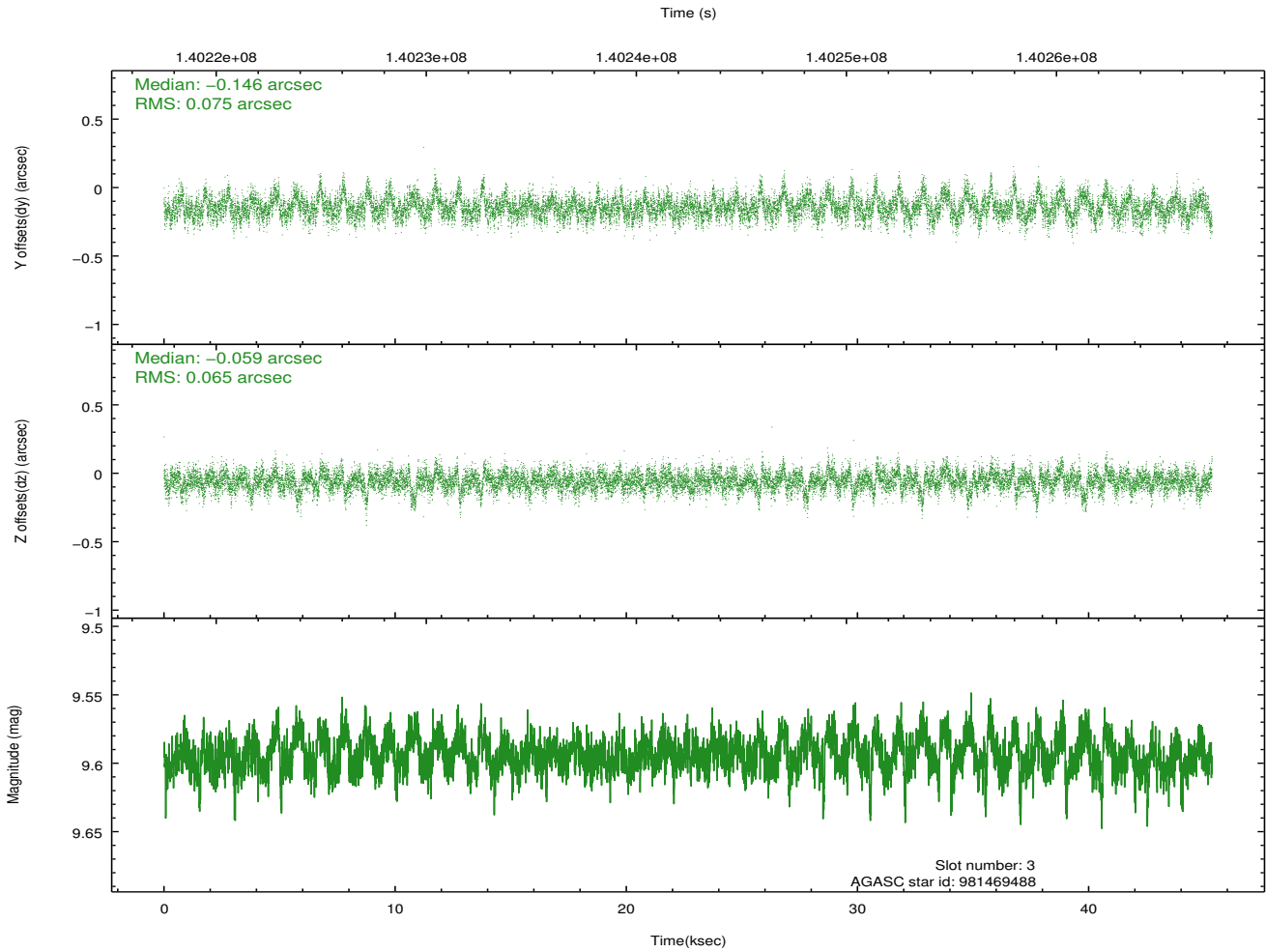
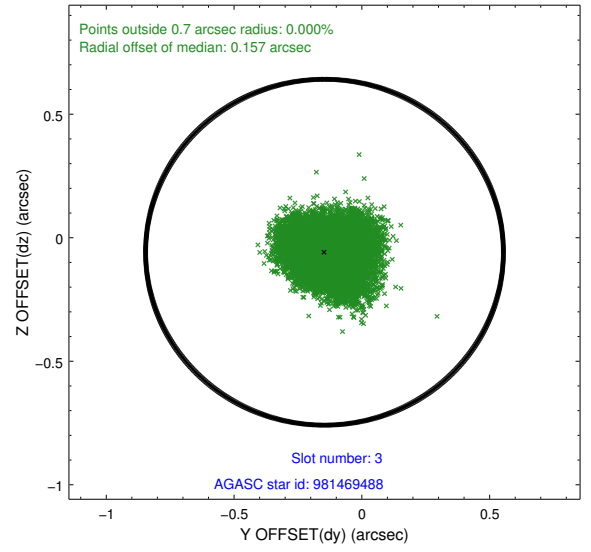
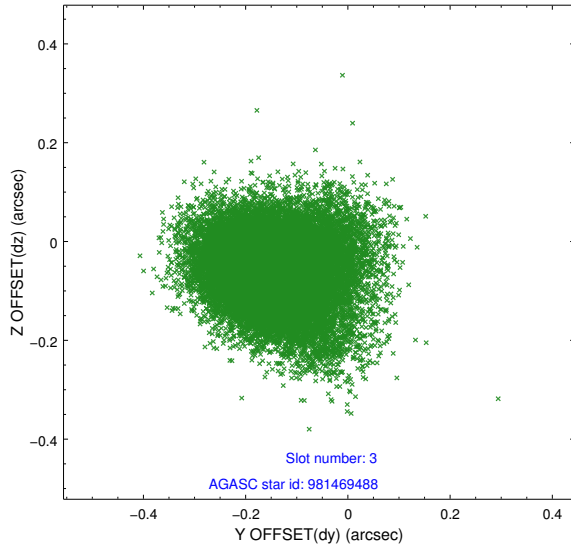


Slot Statistics

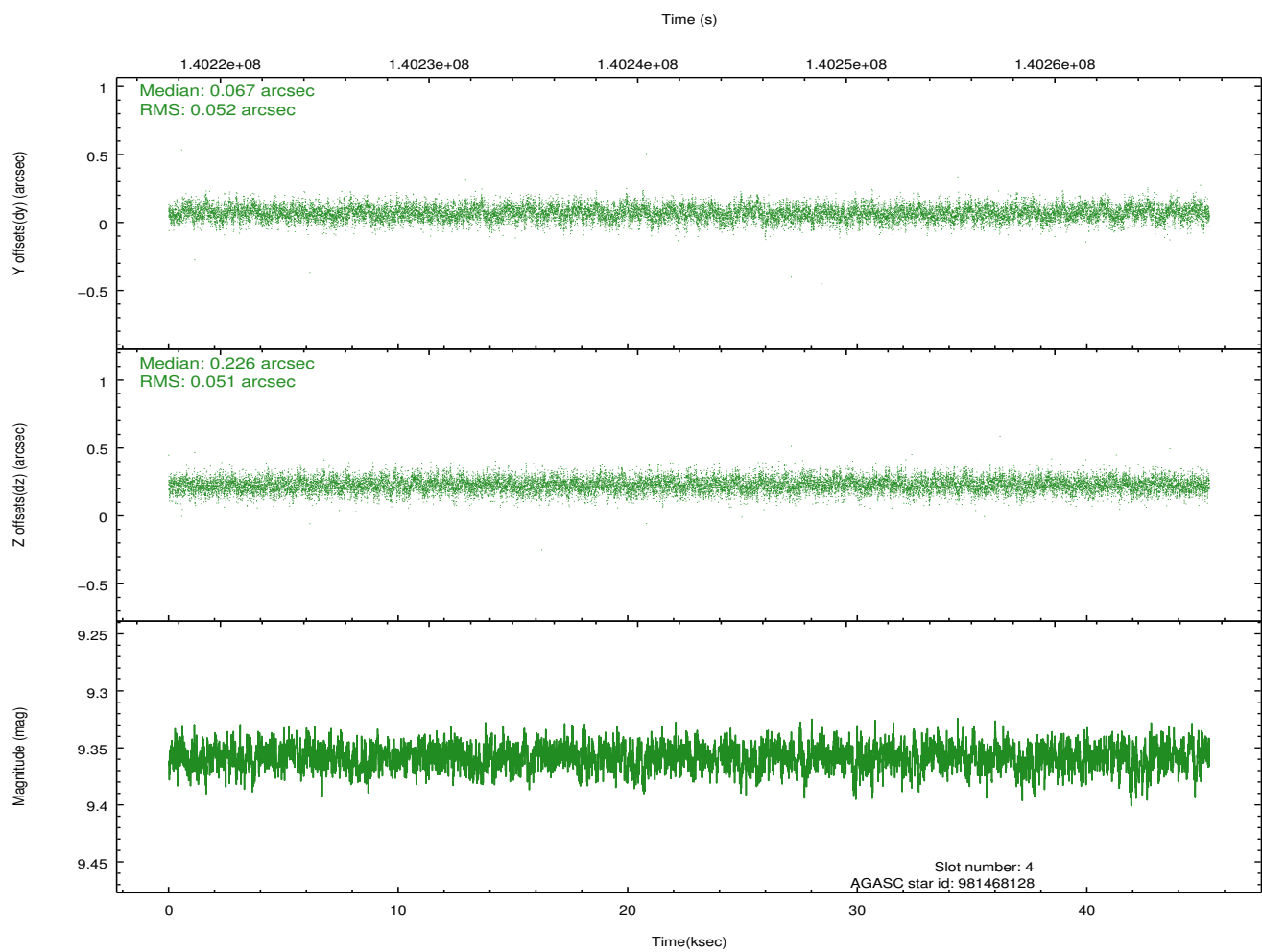
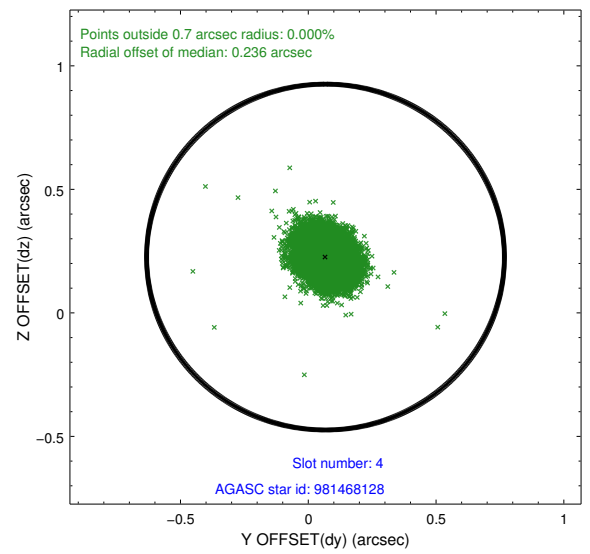
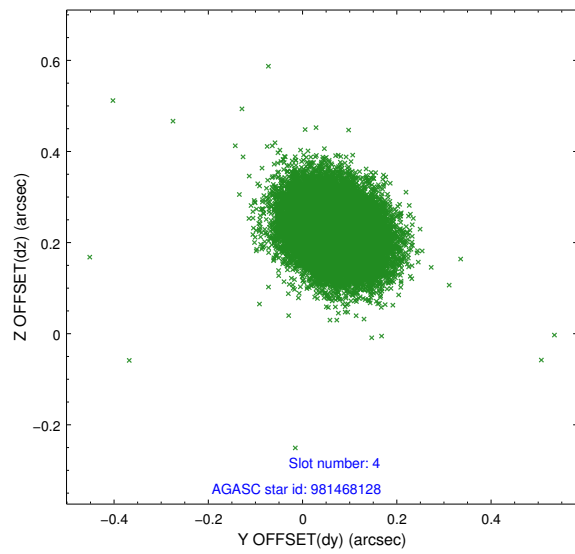
slot	status	id	mag	n_pts	med_dy	med_dz	dr1	dr2	ra	dec	mean_y	mean_z
0	FID	ACIS-S-2	7.09	11057	-0.040	-0.104	0.007	0.011	0.000000	0.000000	-755.15	-1892.45
1	FID	ACIS-S-4	7.18	11056	0.050	0.047	0.006	0.011	0.000000	0.000000	2158.24	16.13
2	FID	ACIS-S-5	7.23	11058	-0.041	0.065	0.007	0.011	0.000000	0.000000	-1807.98	9.86
3	GUIDE	981469488	9.59	22103	-0.146	-0.059	0.103	0.179	329.261199	-30.045155	1186.74	1315.47
4	GUIDE	981468128	9.36	22104	0.067	0.226	0.077	0.126	329.756350	-30.158334	479.16	-113.66
5	GUIDE	981607880	10.34	21951	0.247	0.144	0.136	0.221	330.223475	-30.497699	-1013.11	-1285.17
6	GUIDE	981478152	9.39	22098	-0.021	-0.068	0.100	0.172	329.415589	-30.057192	1048.78	852.50
7	GUIDE	912276032	9.61	22096	-0.153	-0.236	0.122	0.199	329.395967	-29.803466	1956.04	730.46

2.4 Star Slots

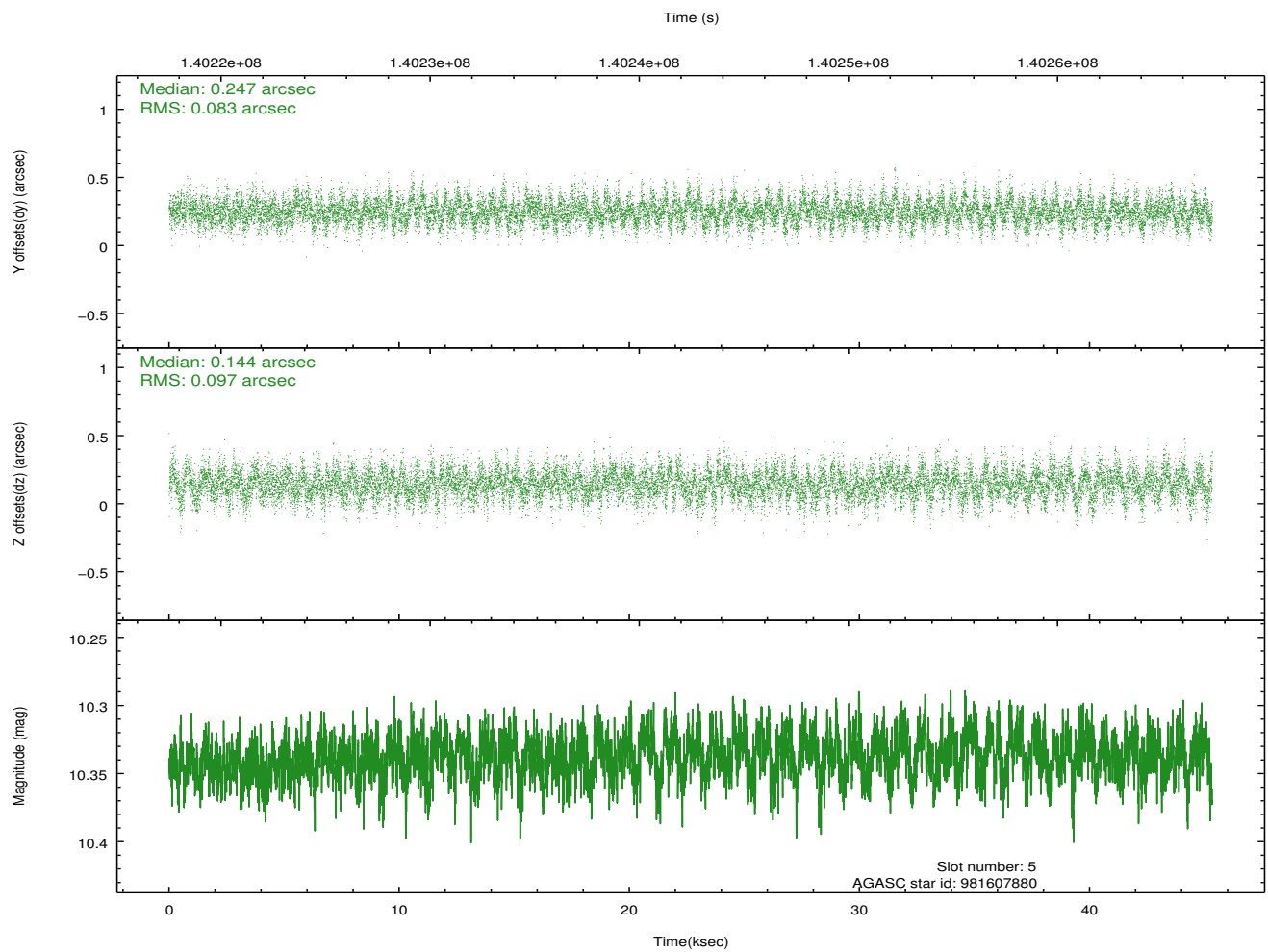
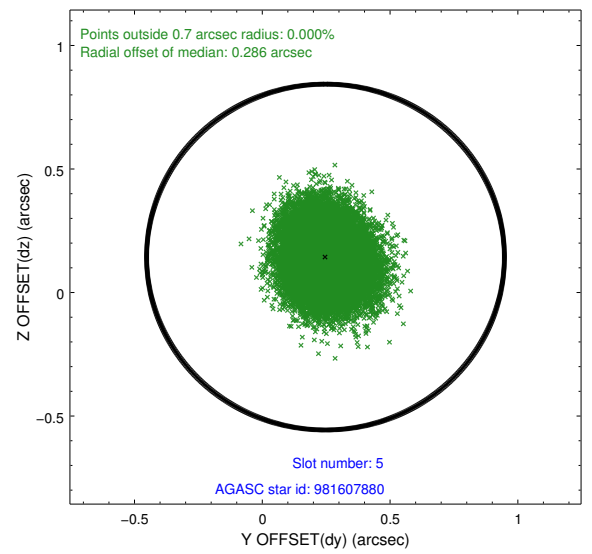
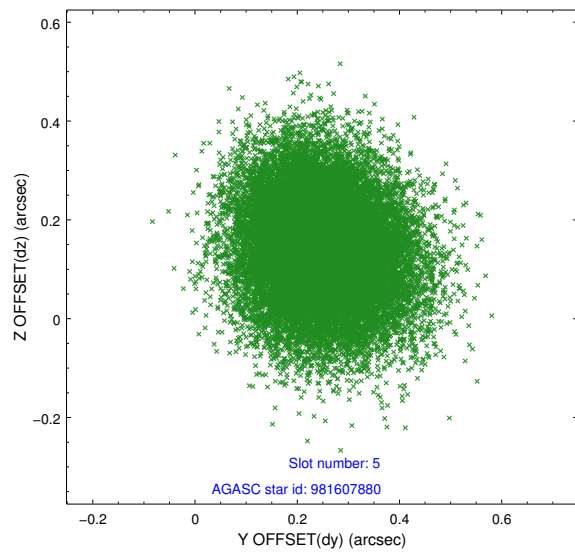
2.4.1 Slot 3



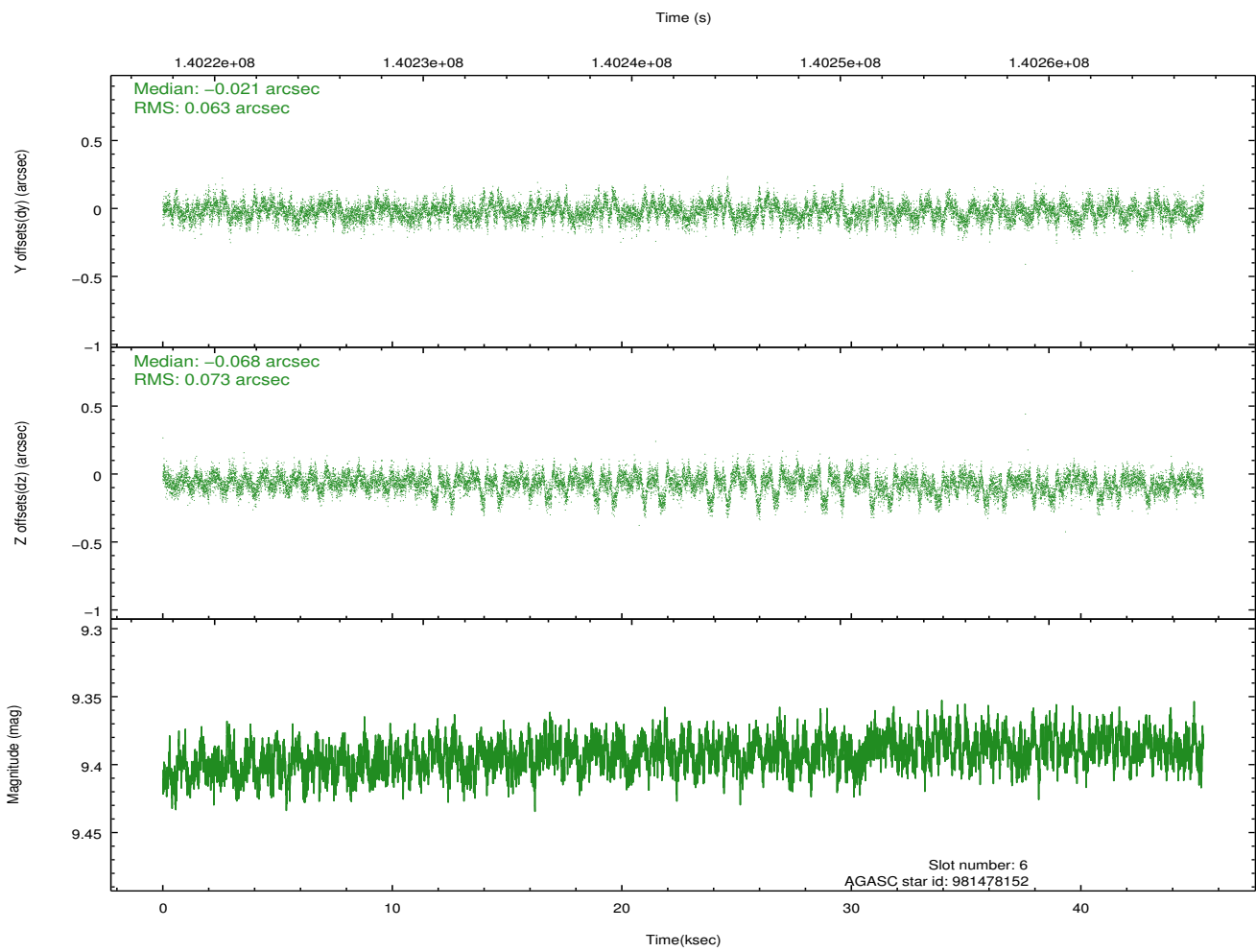
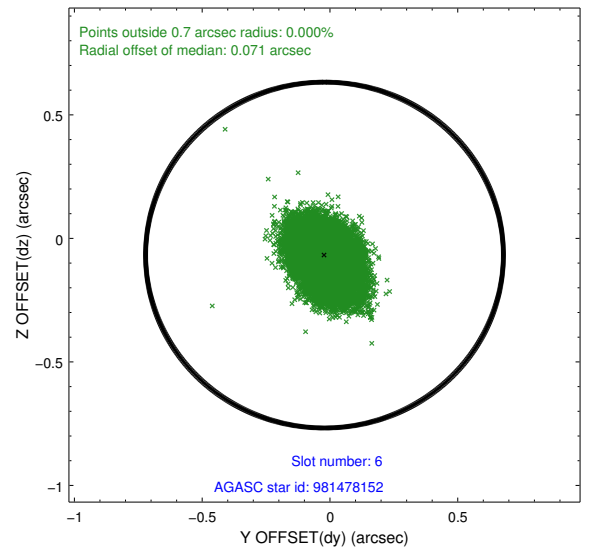
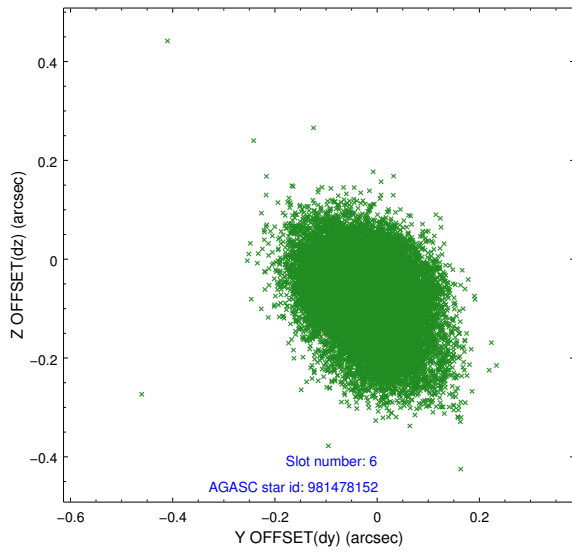
2.4.2 Slot 4



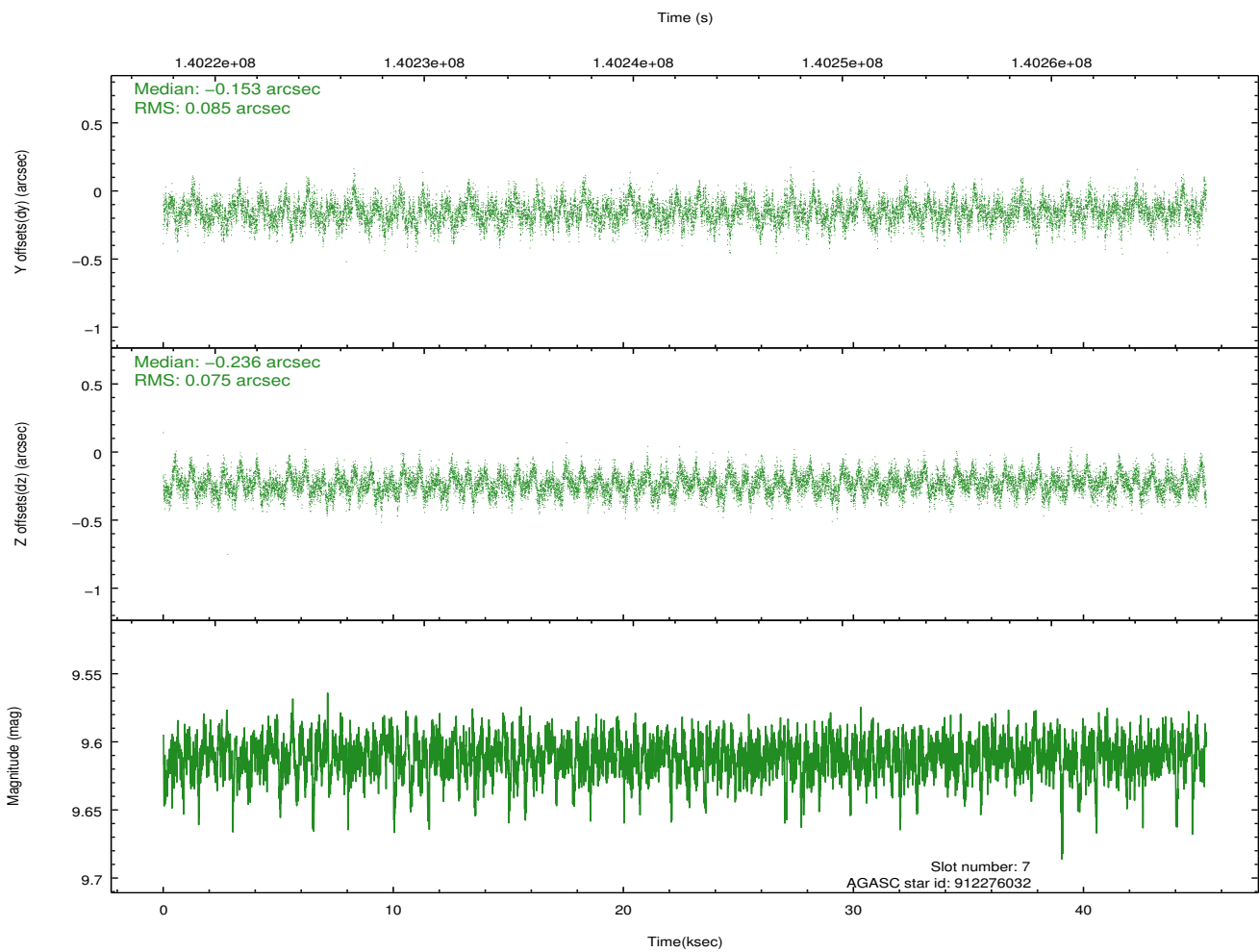
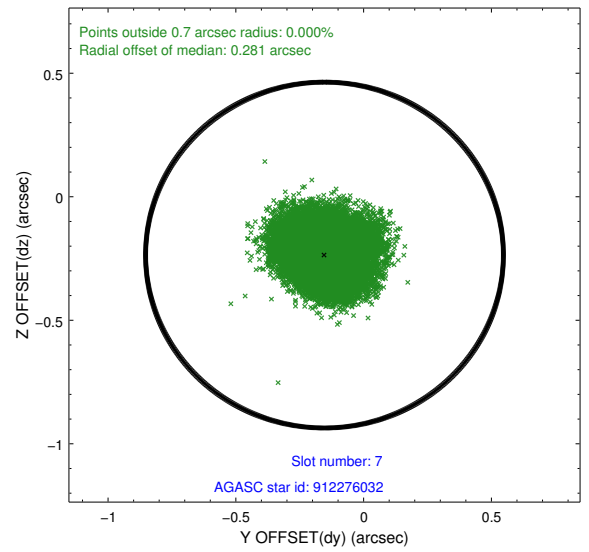
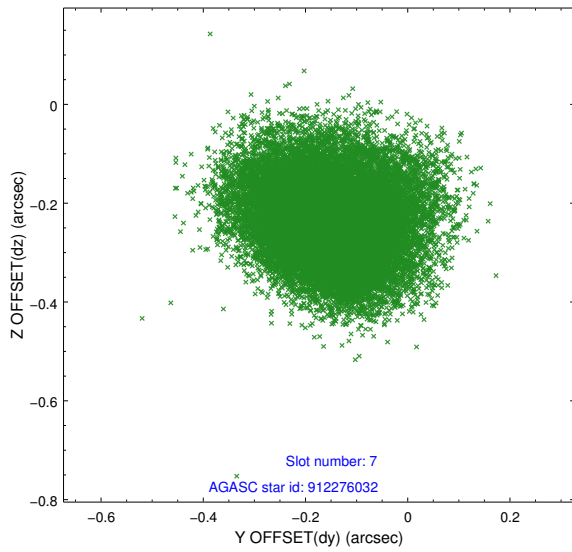
2.4.3 Slot 5



2.4.4 Slot 6

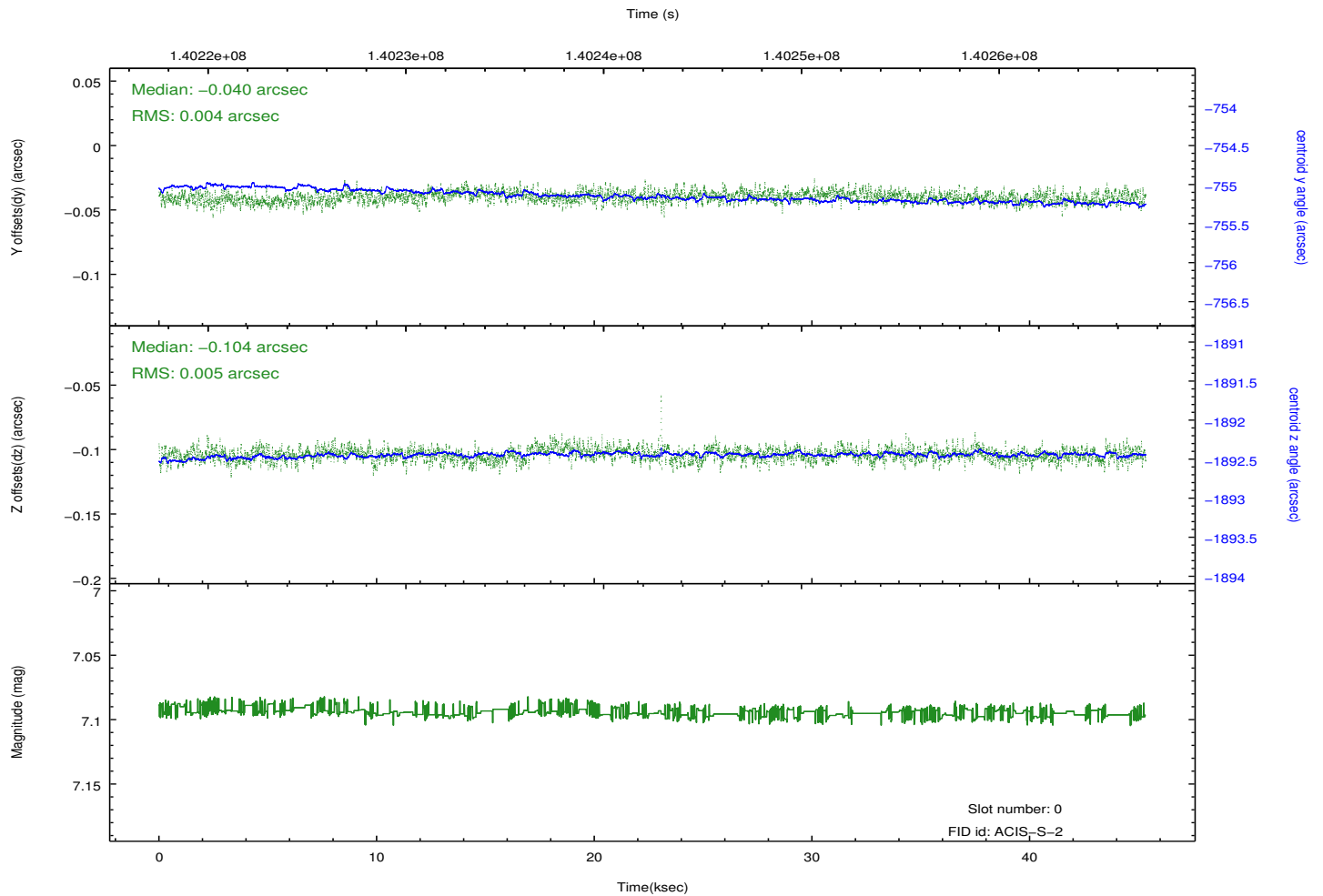
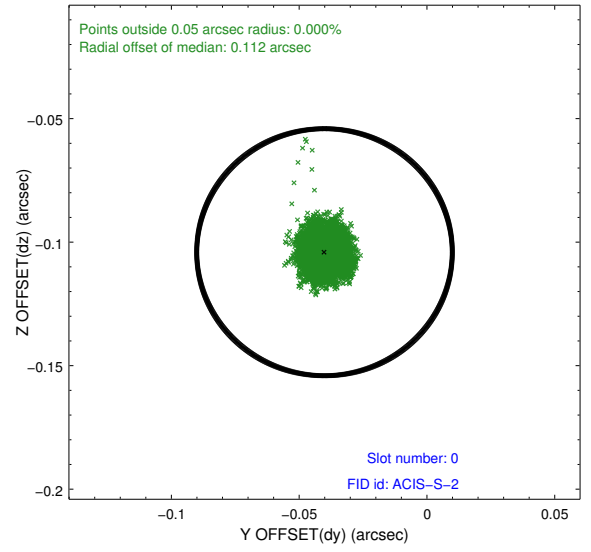
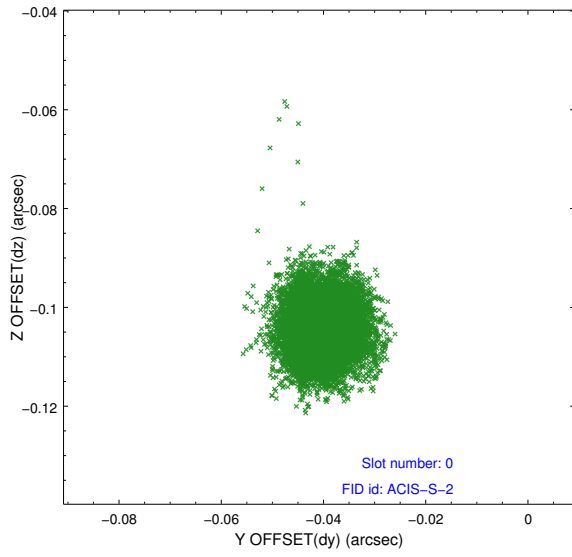


2.4.5 Slot 7

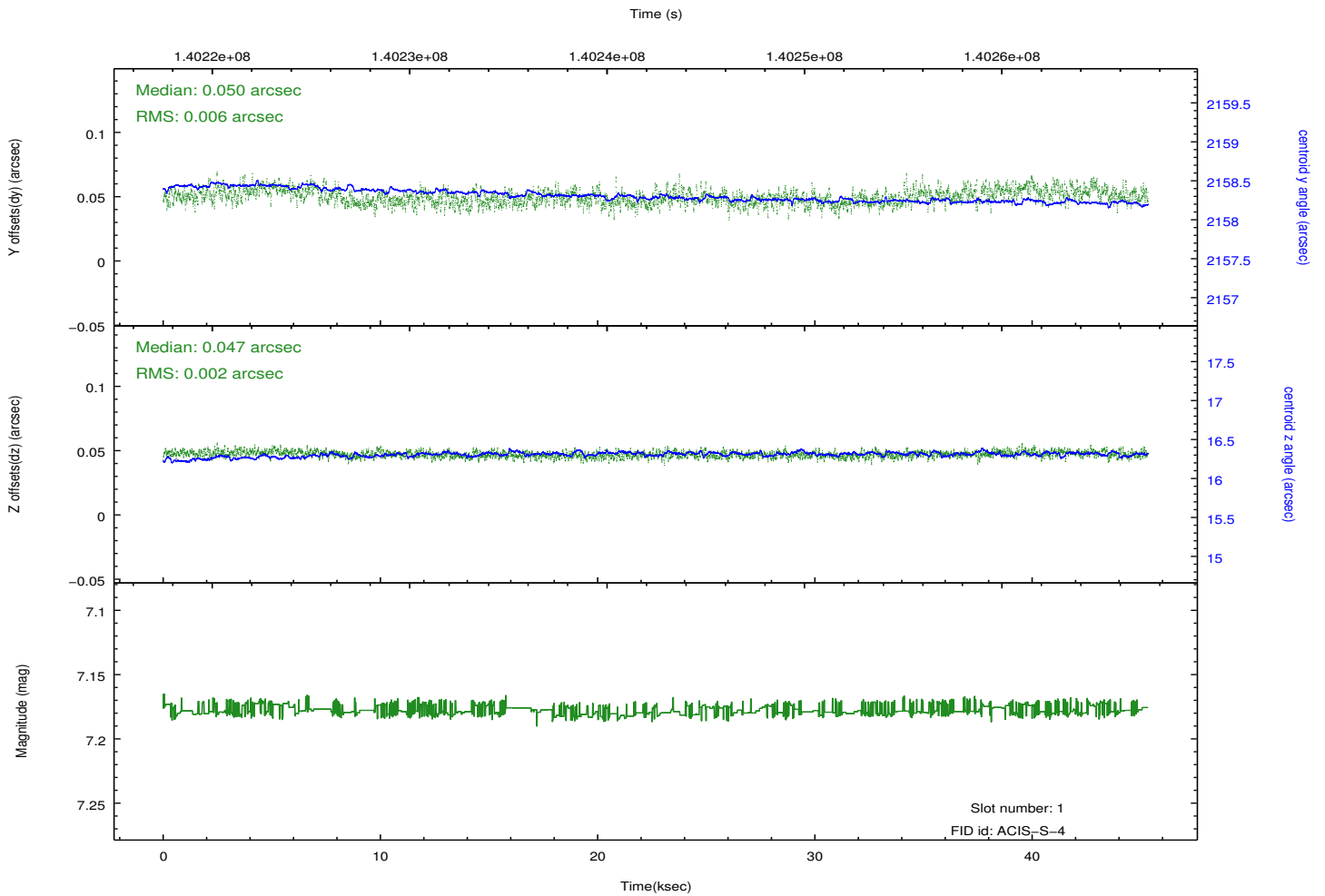
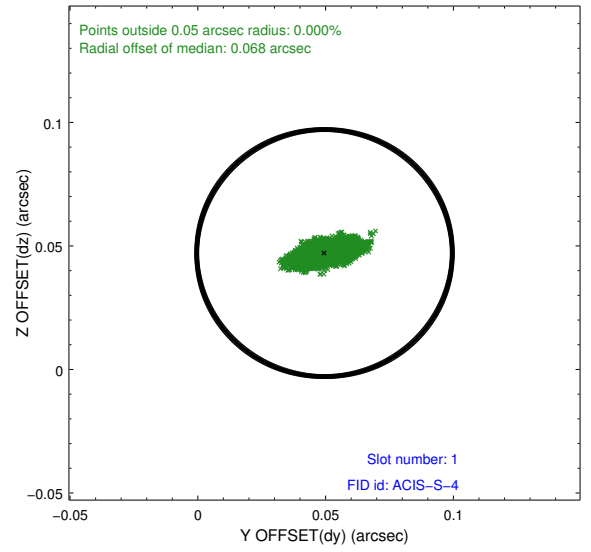
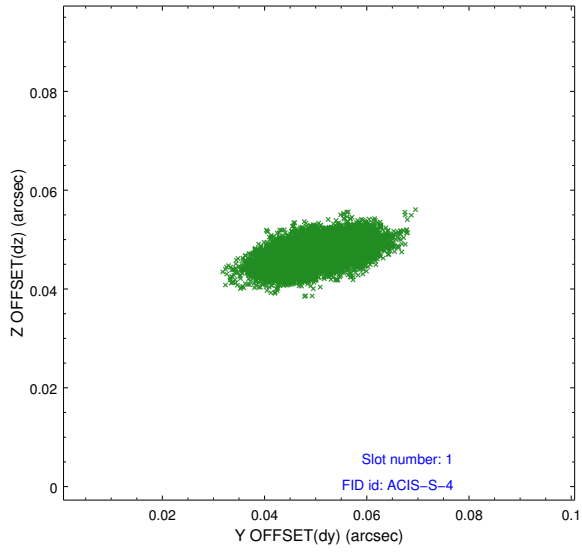


2.5 FID Slots

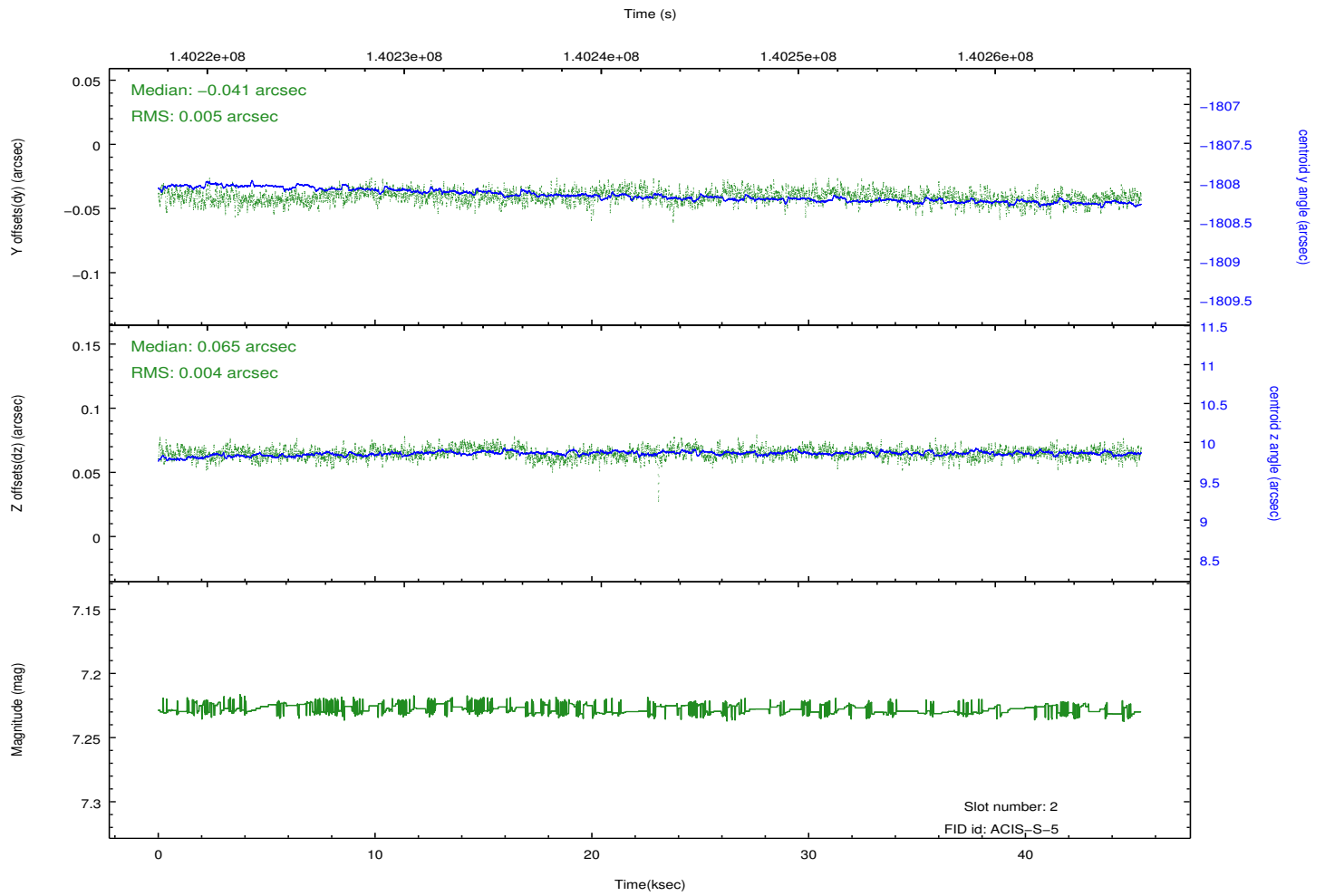
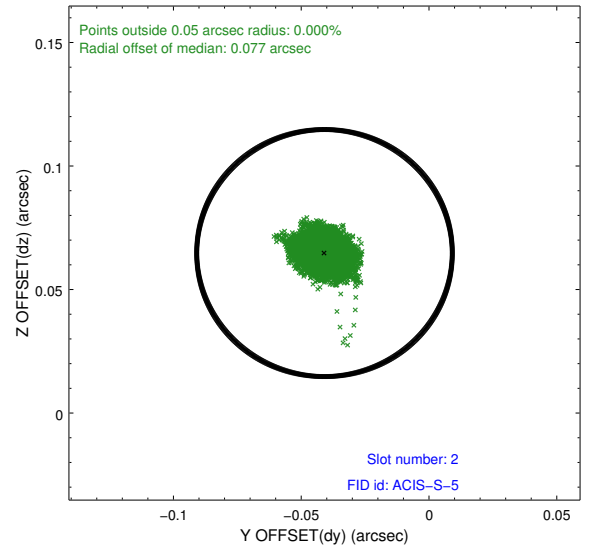
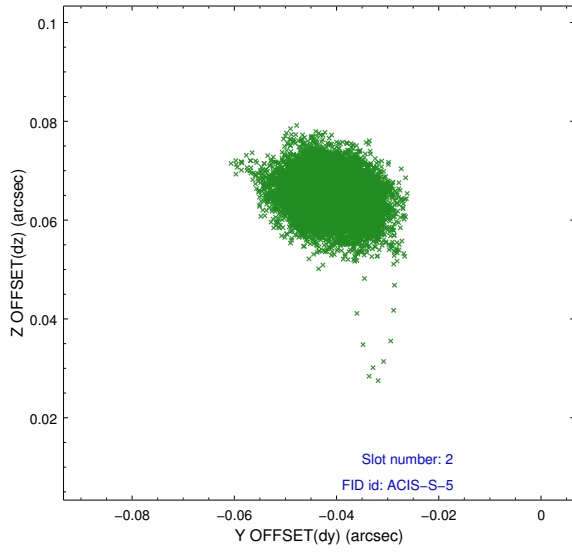
2.5.1 Slot 0



2.5.2 Slot 1

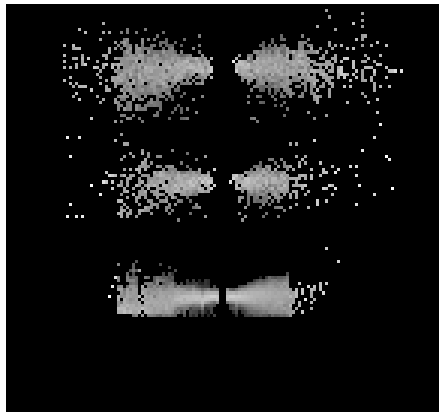


2.5.3 Slot 2

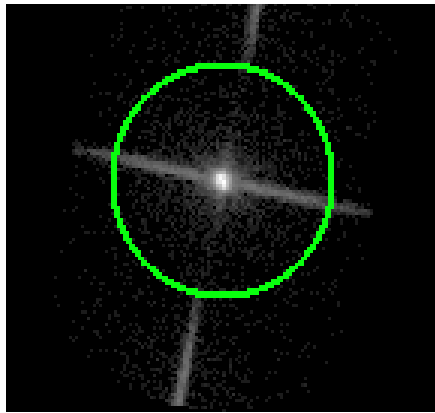


3 Gratings

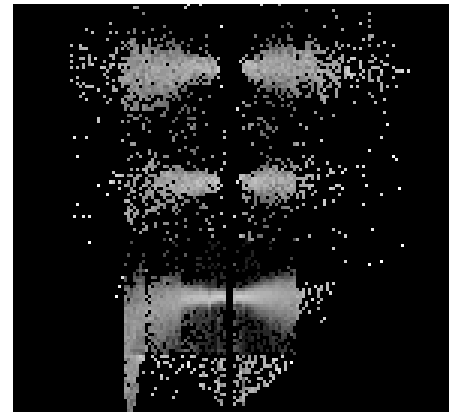
3.1 LETG Arm



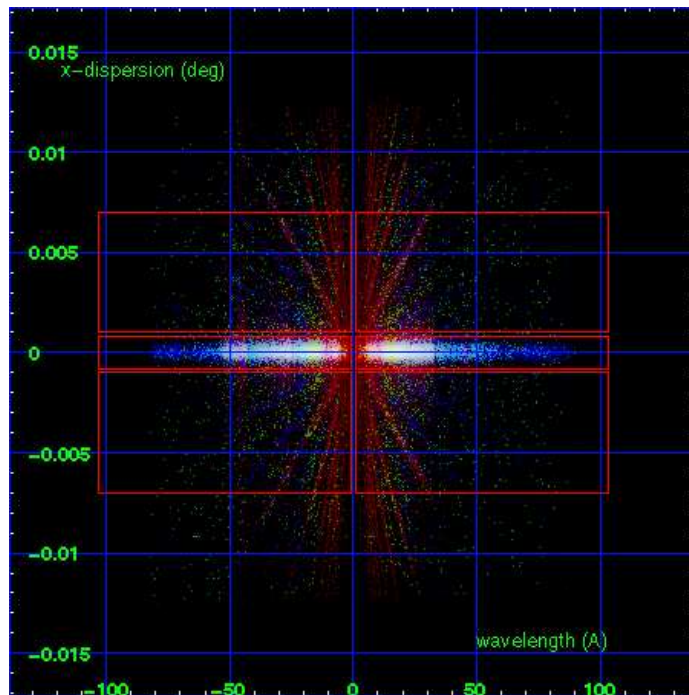
LETG Order Sort 123



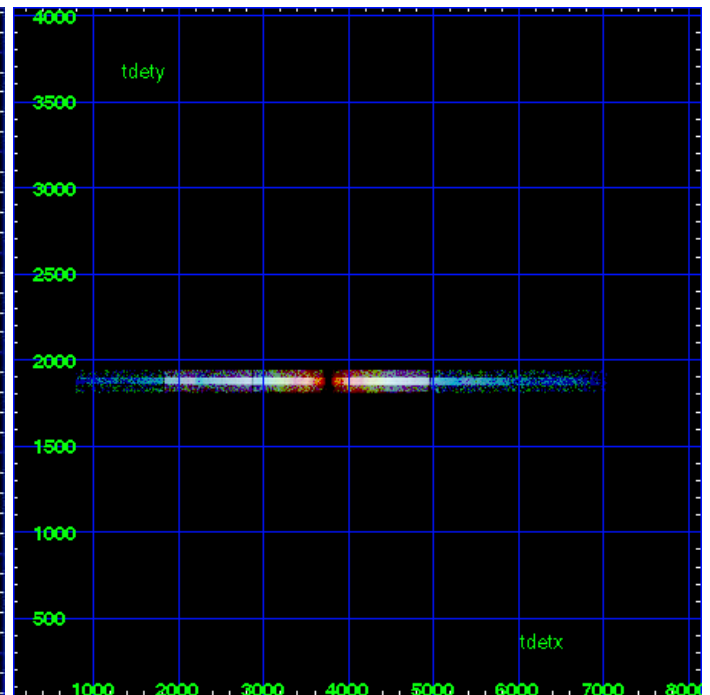
LETG Zero Order



LETG Order Sort ALL

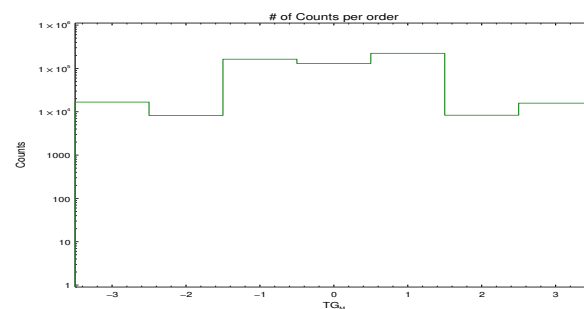


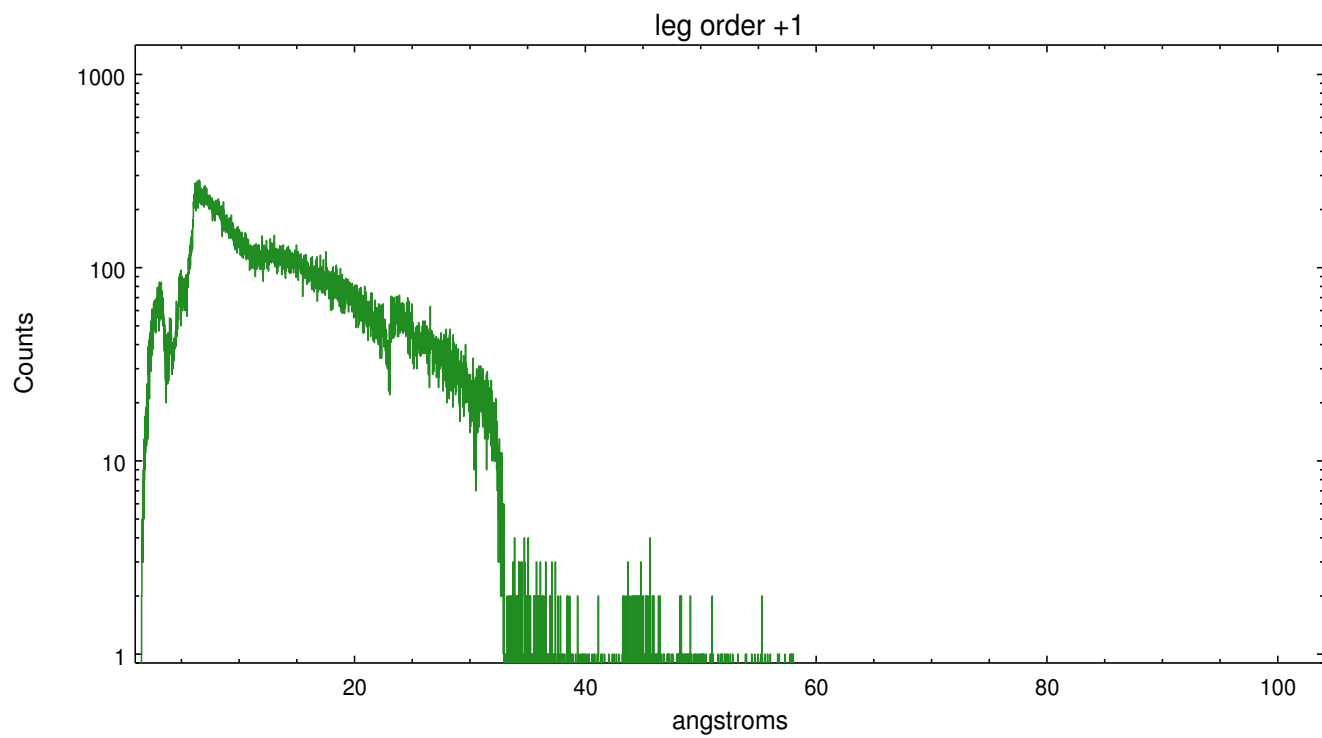
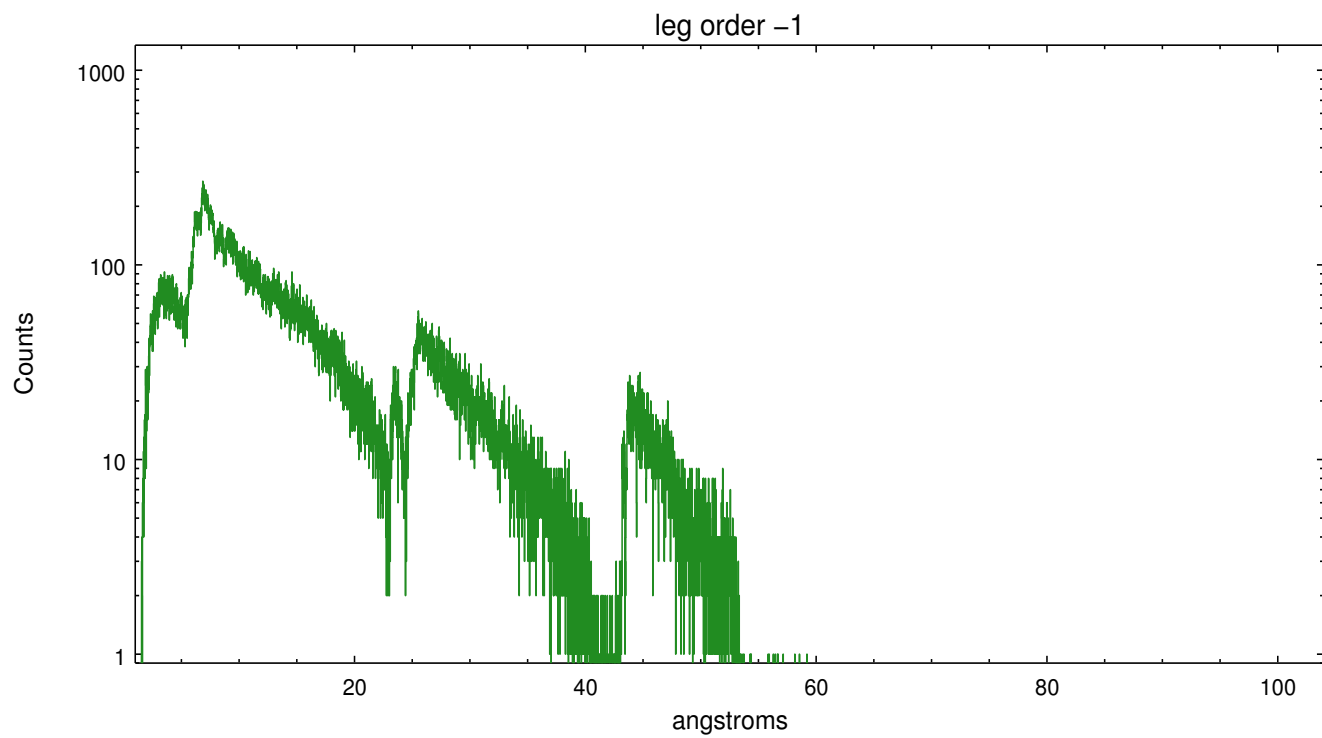
Spot Image LETG



Full Detector LETG

	order -3	order -2	order -1	order 0	order 1	order 2	order 3
Events	16703	8234	163306	130194	223066	8308	15788





A Summary

A.1 Status

V&V Scientist	David Huenemoerder
V&V Date (YYYY-MM-DD)	2013.01.25
V&V Edition	1
V&V Disposition and Status	OK
V&V Charge Time	44.916

A.2 Comments