

V&V Reference Report

L2 ASCDS Version : 8.4.5

Observation 379 - L2 Version 4
Chandra X-Ray Center

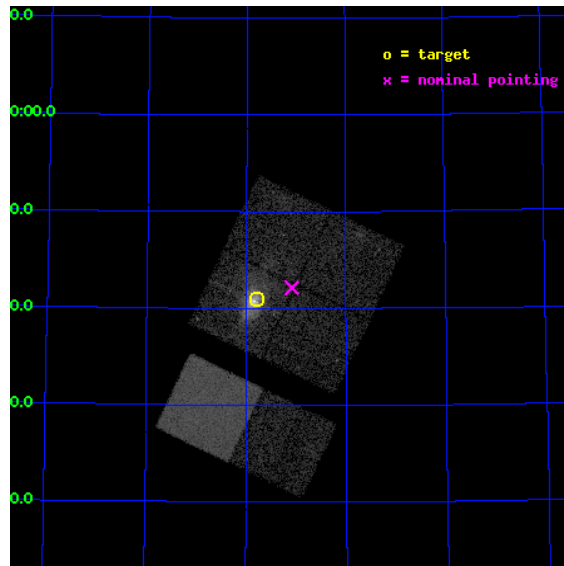
L2 Processing Date : Aug 24 2012

Contents

1	Front	2
2	OBI	3
2.1	OBI	3
2.1.1	Images	3
2.1.2	Bias	3
2.1.3	Parameters	4
2.1.4	Events	4
2.2	Compared Parameters	5
2.3	Aspect	6
2.4	Star Slots	9
2.4.1	Slot 3	9
2.4.2	Slot 4	10
2.4.3	Slot 5	11
2.4.4	Slot 6	12
2.4.5	Slot 7	13
2.5	FID Slots	14
2.5.1	Slot 0	14
2.5.2	Slot 1	15
2.5.3	Slot 2	16
A	Summary	17
A.1	Status	17
A.2	Comments	17

1 Front

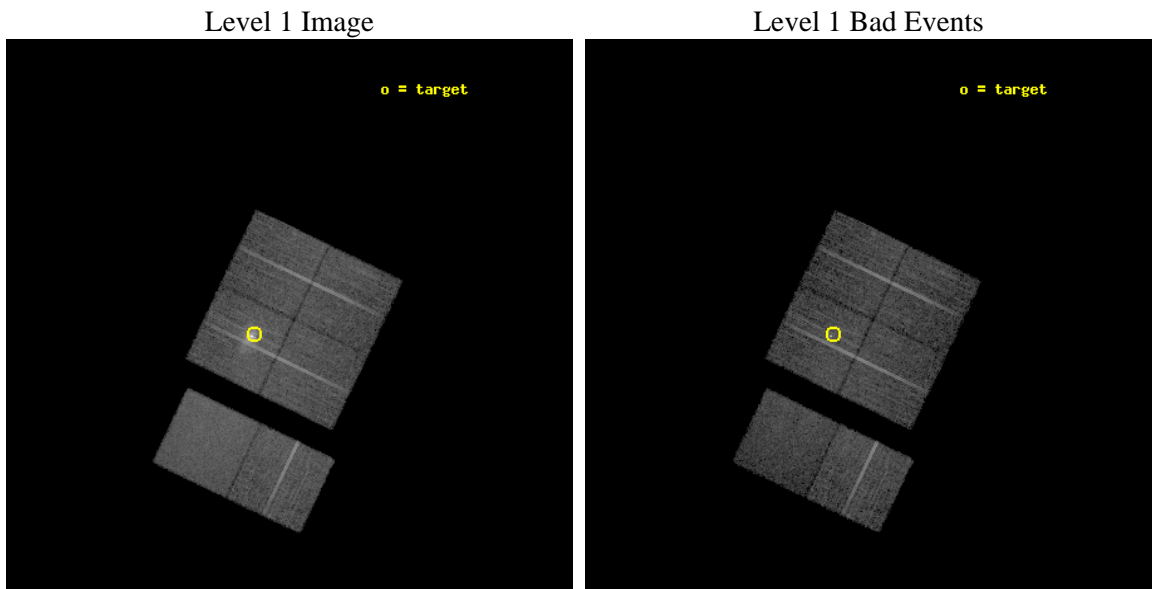
seq_num	700051	Sequence number
obs_id	379	Observation id
title	THE ORIGIN OF HARD X-RAYS FROM M82	Proposal title
observer	Dr. Stephen Murray	Principal investigator
object	M82	Source name
dtcycle	0	
cycle	P	events from which exps? Prim/Second/Both
ra_targ	148.945833	Observer's specified target RA [deg]
dec_targ	69.682778	Observer's specified target Dec [deg]
ra_nom	148.7713367469	Nominal RA [deg]
dec_nom	69.702364317017	Nominal Dec [deg]
roll_nom	205.59865597116	Nominal Roll [deg]
revision	4	Processing version of data
ontime	9049.6000084132	Sum of GTIs [s]
livetime	8935.0085240917	Livetime [s]
ontime0	9049.6000084132	Sum of GTIs [s]
ontime1	9049.6000084132	Sum of GTIs [s]
ontime2	9049.6000084132	Sum of GTIs [s]
ontime3	9049.6000084132	Sum of GTIs [s]
ontime6	9049.6000084132	Sum of GTIs [s]
ontime7	9049.6000084132	Sum of GTIs [s]
l2events	92732	Number of level 2 events



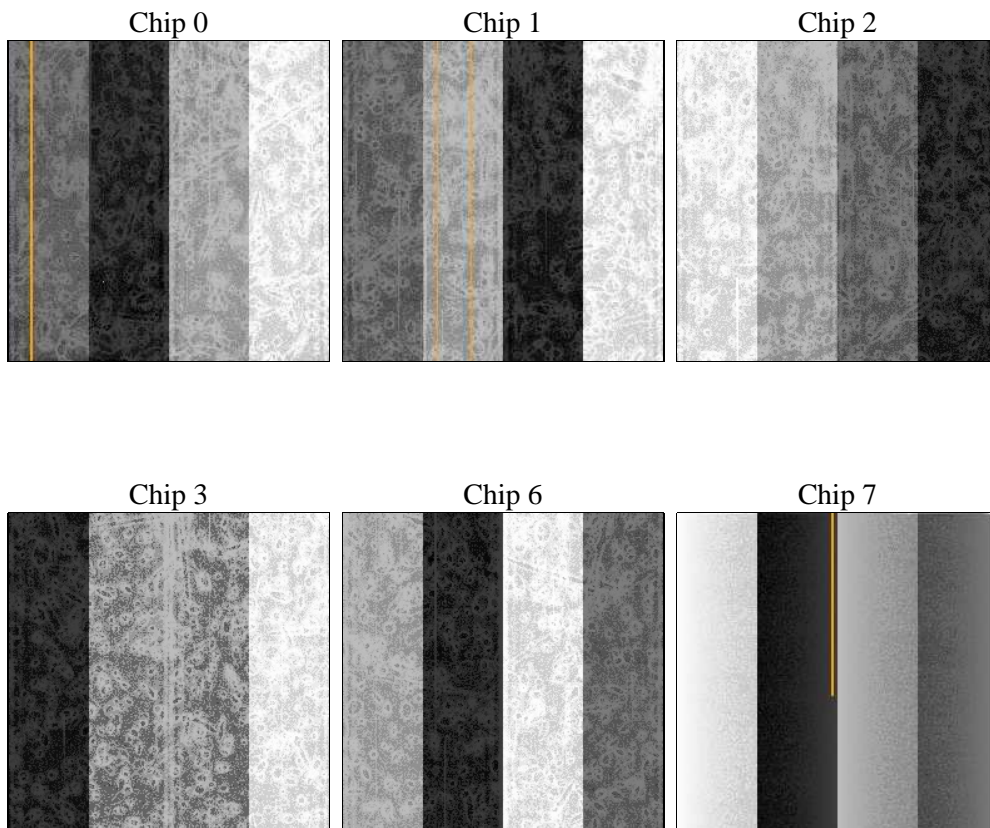
2 OBI

2.1 OBI

2.1.1 Images



2.1.2 Bias



2.1.3 Parameters

obi_num	0	Obi number	sched_exp_time	10000.000000	[s] Scheduled observation exposure time
ascdsver	8.4.5	Processing system revision	ontime	9049.6000084132	Sum of GTIs [s]
caldbver	4.5.1.1	 	ontime0	9049.6000084132	Sum of GTIs [s]
date	2012-08-24T12:50:00	Date and time of file creation	ontime1	9049.6000084132	Sum of GTIs [s]
revision	4	Processing version of data	ontime2	9049.6000084132	Sum of GTIs [s]
			ontime3	9049.6000084132	Sum of GTIs [s]
			ontime6	9049.6000084132	Sum of GTIs [s]
			ontime7	9049.6000084132	Sum of GTIs [s]
			l1events	438759	Number of level 1 events

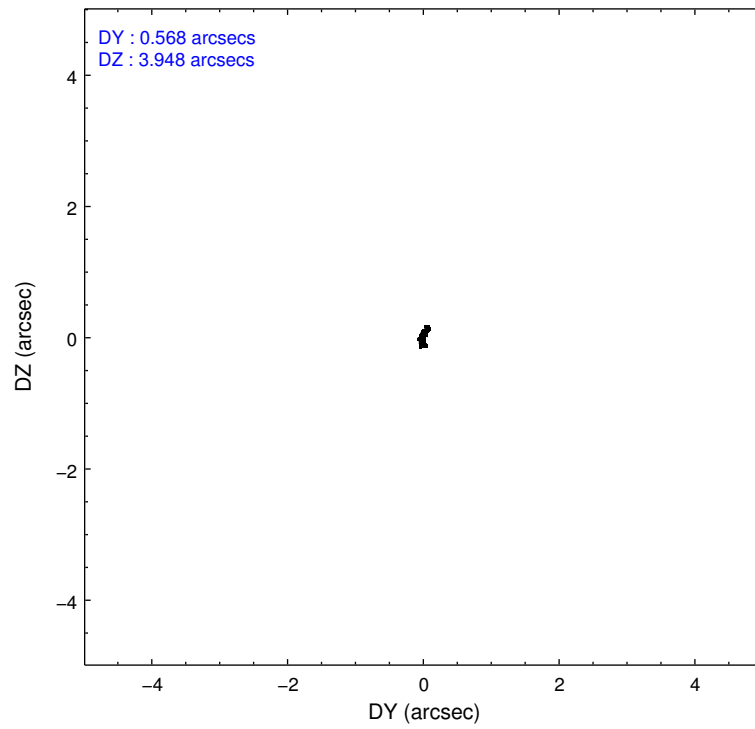
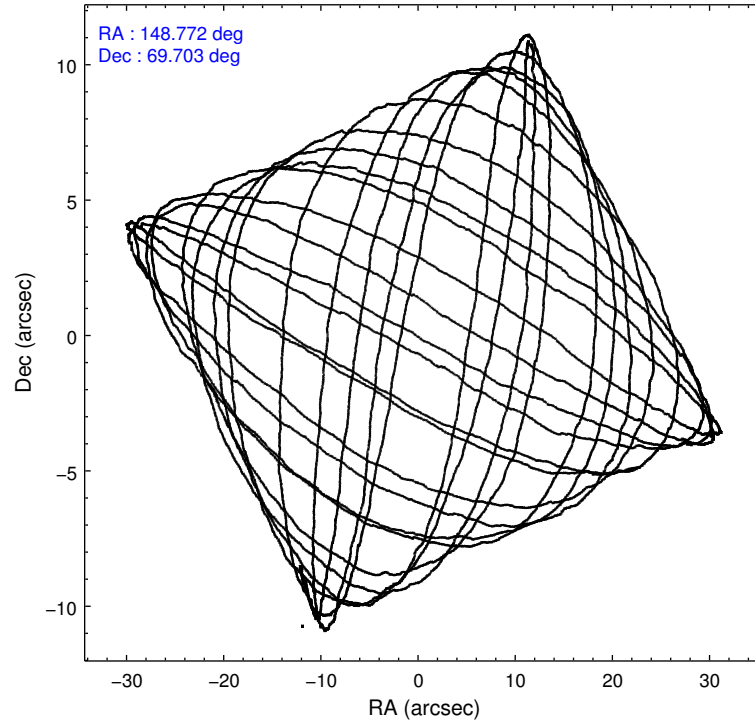
2.1.4 Events

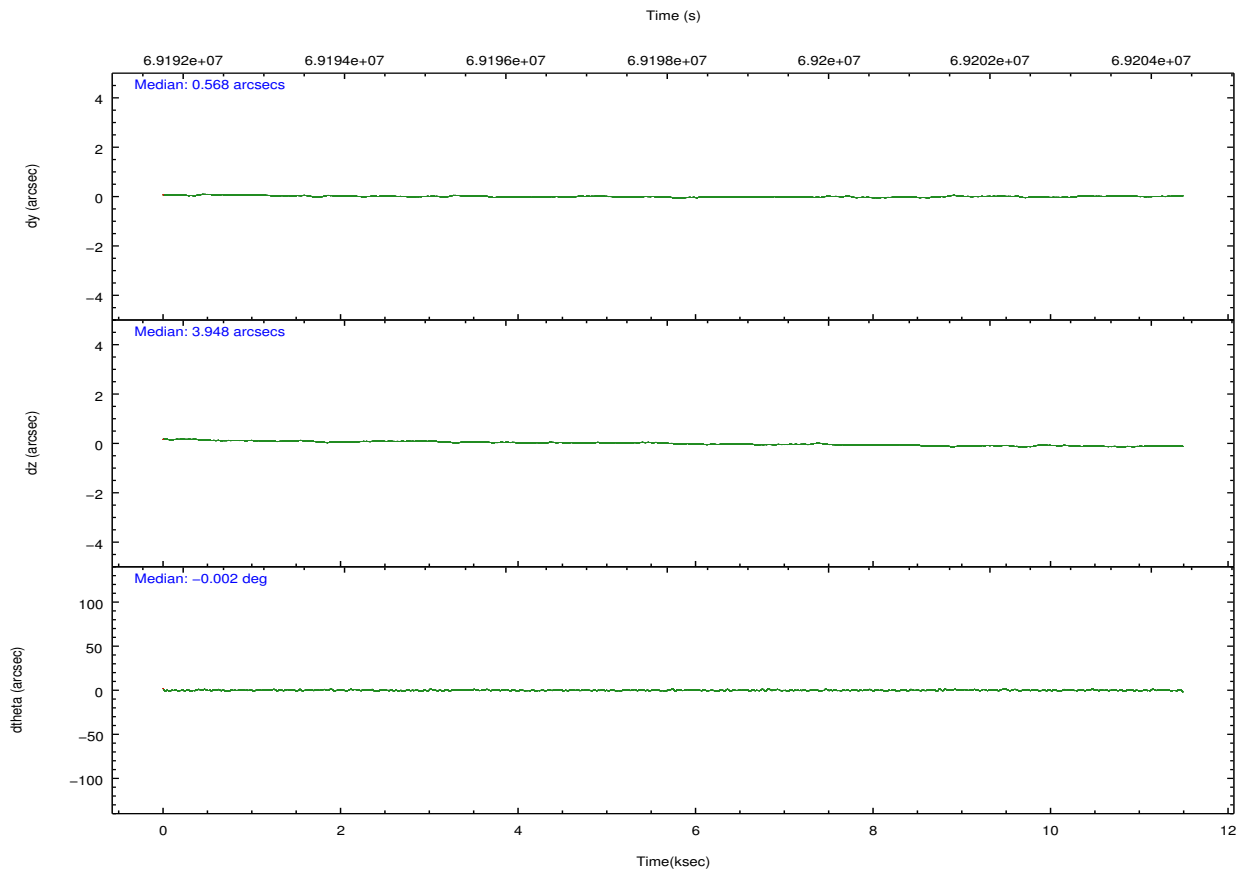
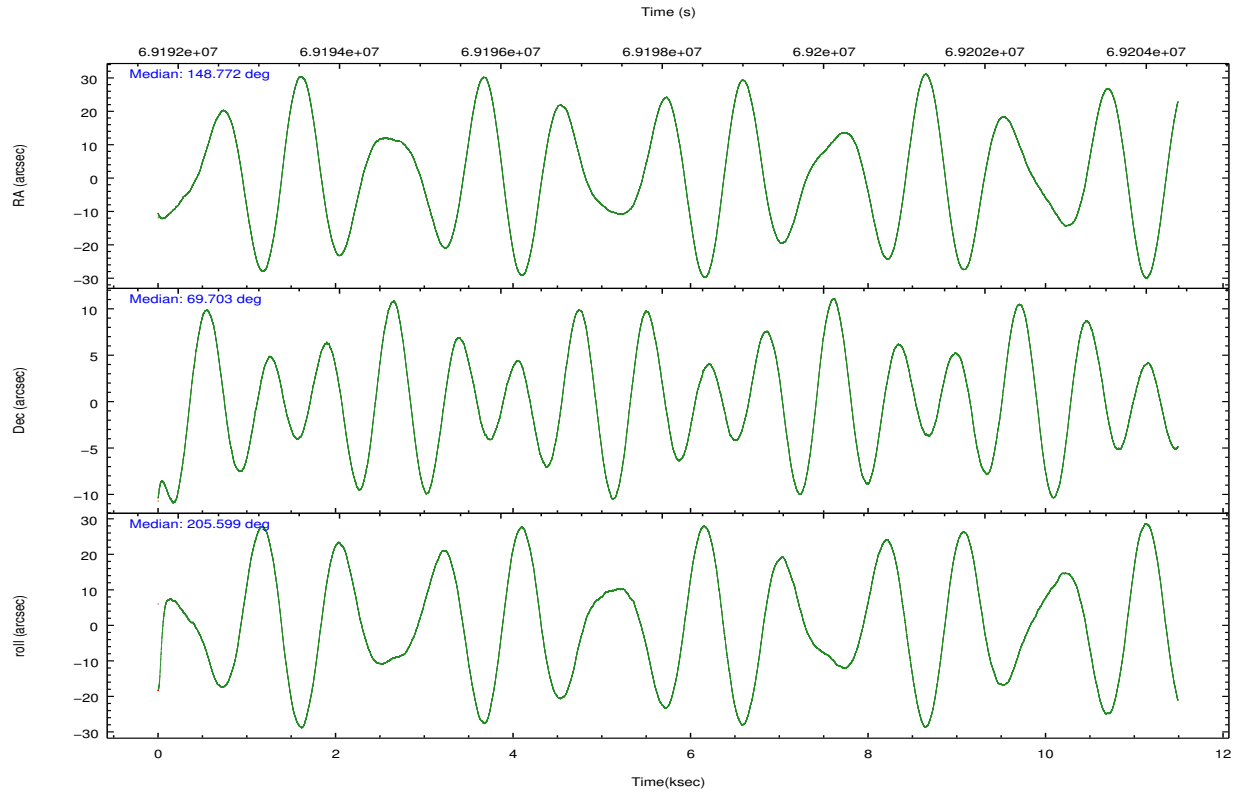
	ccd 0	ccd 1	ccd 2	ccd 3	ccd 6	ccd 7		ccd 0	ccd 1	ccd 2	ccd 3	ccd 6	ccd 7
level 1 events	59996	62951	67126	102377	69281	77028	grade 0 events	3441	4087	2980	27003	2738	3253
rejected events	52381	54364	60093	65216	62476	44244		5%	6%	4%	26%	3%	4%
rejected %	87%	86%	89%	63%	90%	57%	grade 1 events	41	32	40	996	24	69
								0%	0%	0%	0%	0%	0%
							grade 2 events	1485	1513	1483	4476	1368	6364
								2%	2%	2%	4%	1%	8%
							grade 3 events	771	846	728	1696	677	3101
								1%	1%	1%	1%	0%	4%
							grade 4 events	697	778	715	1703	717	3004
								1%	1%	1%	1%	1%	3%
							grade 5 events	2071	2113	1971	3043	2501	7432
								3%	3%	2%	2%	3%	9%
							grade 6 events	1224	1372	1134	2311	1308	17082
								2%	2%	1%	2%	1%	22%
							grade 7 events	50266	52210	58075	61149	59948	36723
								83%	82%	86%	59%	86%	47%

2.2 Compared Parameters

Parameter	Planned	Actual	Parameter	Planned	Actual
Instrument	ACIS	ACIS	Obspar format version number	7	7
Detector	ACIS-012367	ACIS-012367	Obspar file type	PREDICTED	ACTUAL
Grating	NONE	NONE	Obspar update status	NONE	UPDATED
Data mode	VFAINT	VFAINT	Number of optional ACIS chips dropped	0	0
Observation mode	POINTING	POINTING	On-chip summing requested	N	N
[deg] Pointing RA	148.817015	148.7713367469041	Subarray requested	NONE	NONE
[deg] Pointing Dec	69.725084	69.70236431701733	Alternating exposures requested	N	N
[deg] Pointing Roll	205.347150	205.5986559711642	[s] Primary exposure time	0.000000	3.2
[mm] SIM focus pos	-0.782348	-0.7809083437167272			
[mm] SIM defocus	0	0.001439871863259334			
[mm] SIM translation stage pos	-233.592463	-233.5874344608287			
[mm] SIM translation stage offset	0	-0.005018542100998502			
[s] Observation start time (MET)	69192816.184000	69191845.762096			
Observation start date	2000-03-11T20:12:32	2000-03-11T19:57:25			
[s] Observation end time (MET)	69202816.184000	69204716.17506599			
Observation end date	2000-03-11T22:59:12	2000-03-11T23:31:56			
Read mode	TIMED	TIMED			

2.3 Aspect



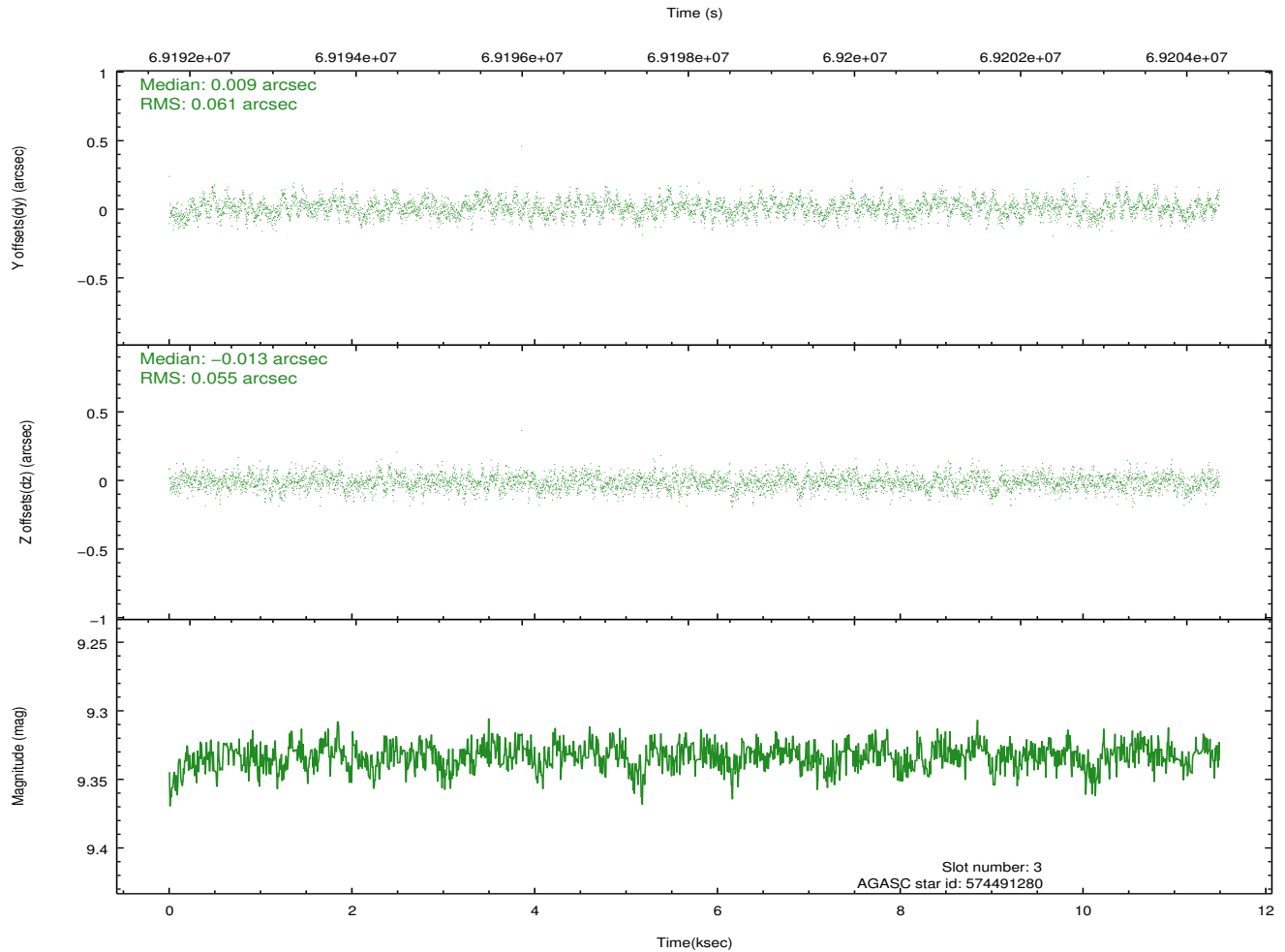
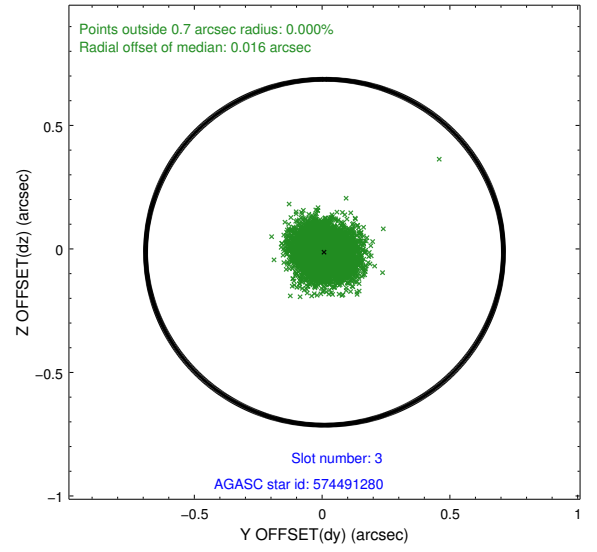
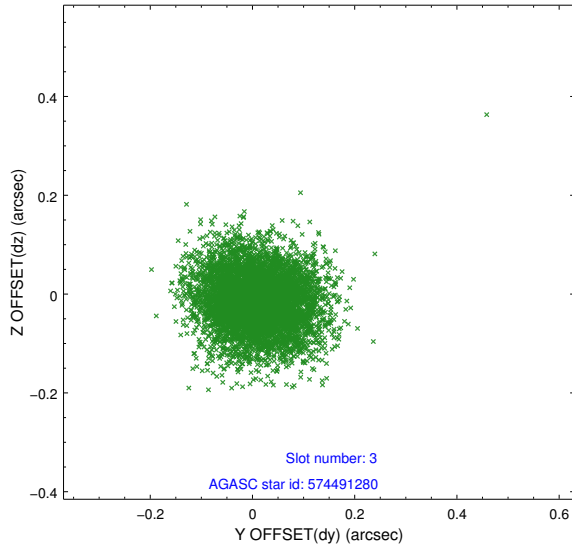


Slot Statistics

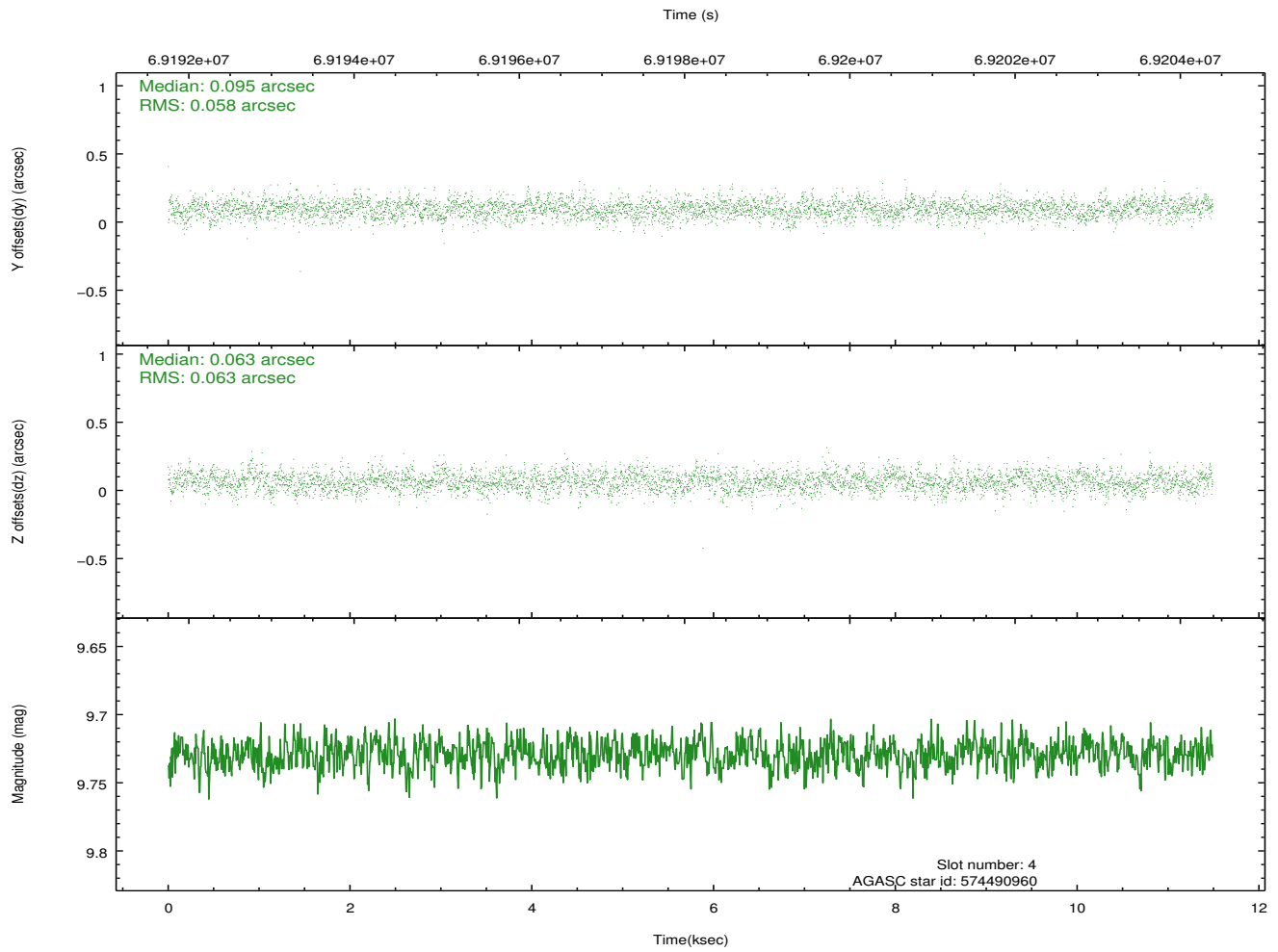
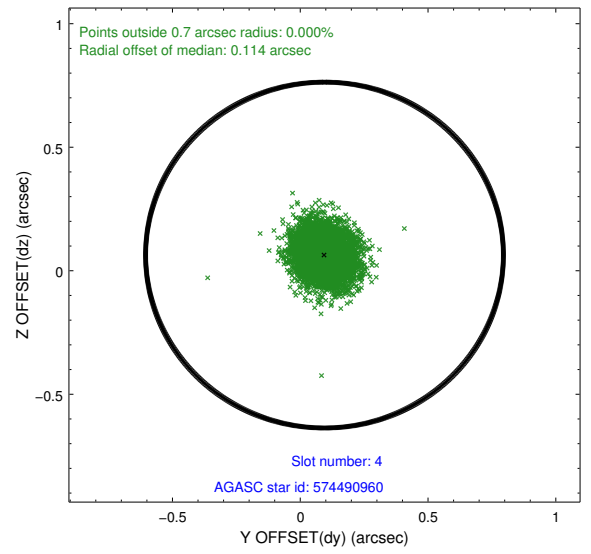
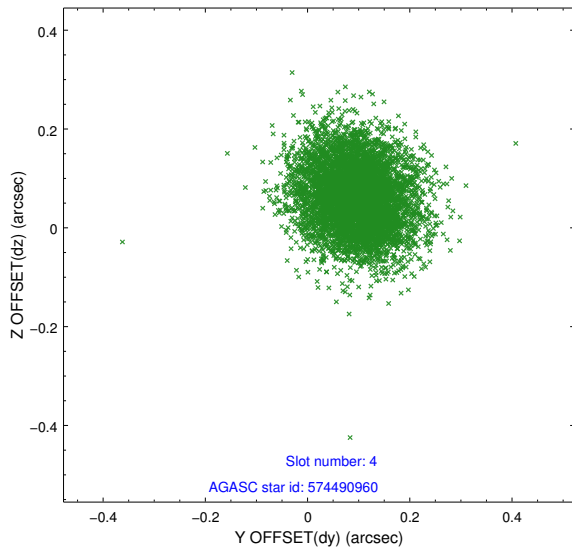
slot	status	id	mag	n_pts	med_dy	med_dz	dr1	dr2	ra	dec	mean_y	mean_z
0	FID	ACIS-I-3	7.44	2803	0.019	0.168	0.009	0.015	0.000000	0.000000	56.73	-960.32
1	FID	ACIS-I-4	7.20	2803	-0.035	-0.072	0.007	0.011	0.000000	0.000000	2159.23	1072.22
2	FID	ACIS-I-5	7.23	2802	-0.083	-0.026	0.008	0.014	0.000000	0.000000	-1808.22	1070.65
3	GUIDE	574491280	9.33	5602	0.009	-0.013	0.087	0.141	148.611567	69.450135	659.43	783.24
4	GUIDE	574490960	9.73	5604	0.095	0.063	0.091	0.150	148.185918	69.658768	815.57	-125.56
5	GUIDE	574886464	9.82	5604	-0.103	-0.050	0.097	0.157	149.898674	70.203982	-1933.65	-1003.87
6	GUIDE	574886288	9.85	5602	-0.069	0.003	0.094	0.151	149.952718	70.139627	-1898.88	-765.64
7	GUIDE	574491712	9.91	5600	0.068	-0.003	0.122	0.197	147.262590	69.570889	1992.93	-356.80

2.4 Star Slots

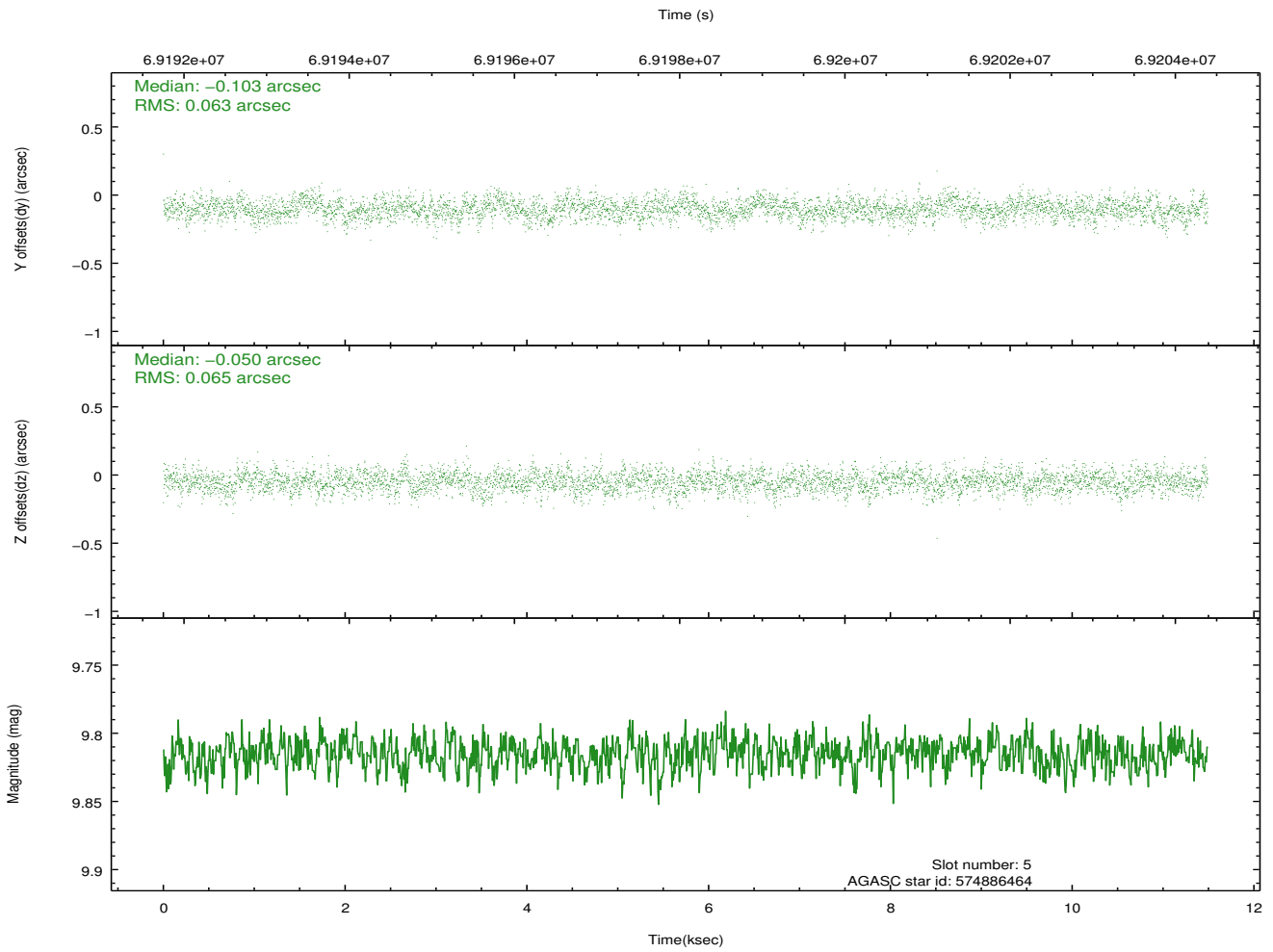
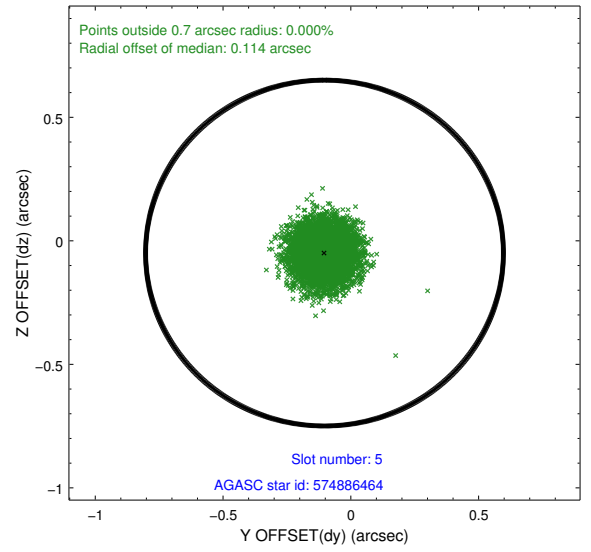
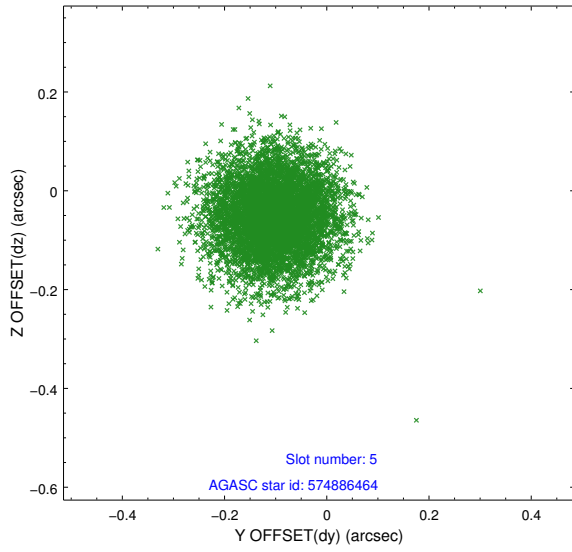
2.4.1 Slot 3



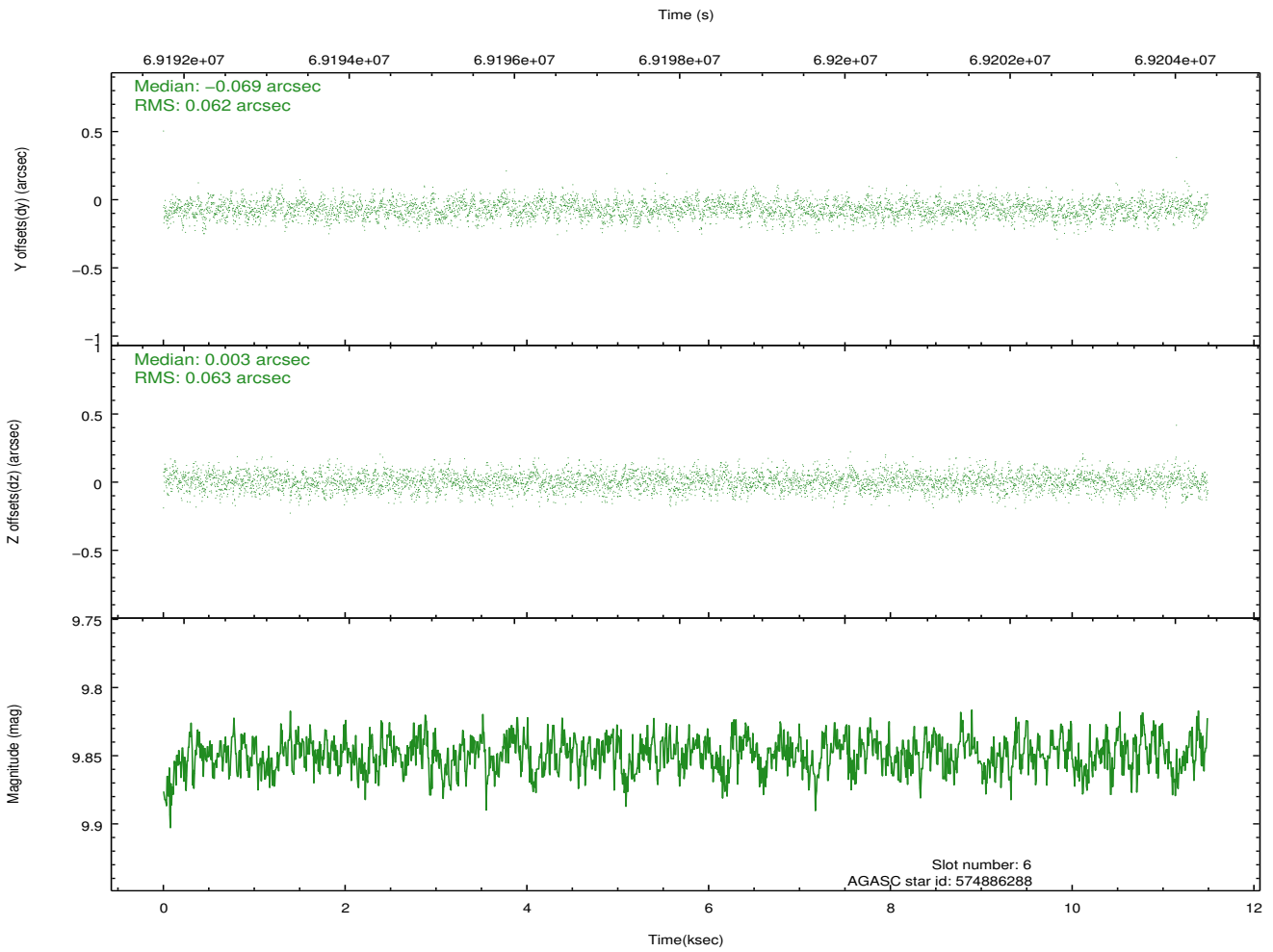
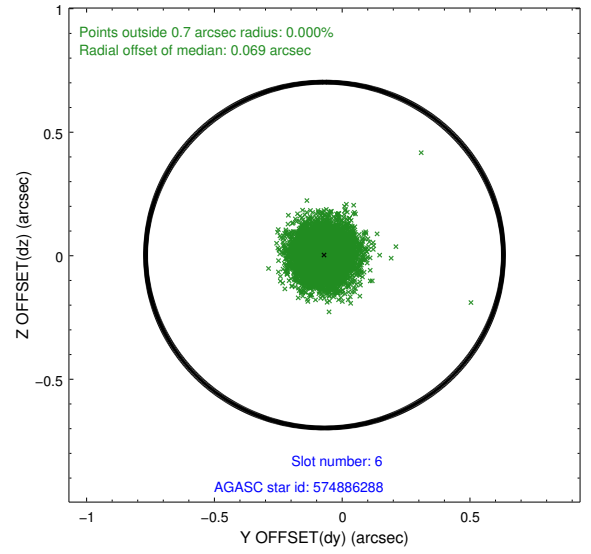
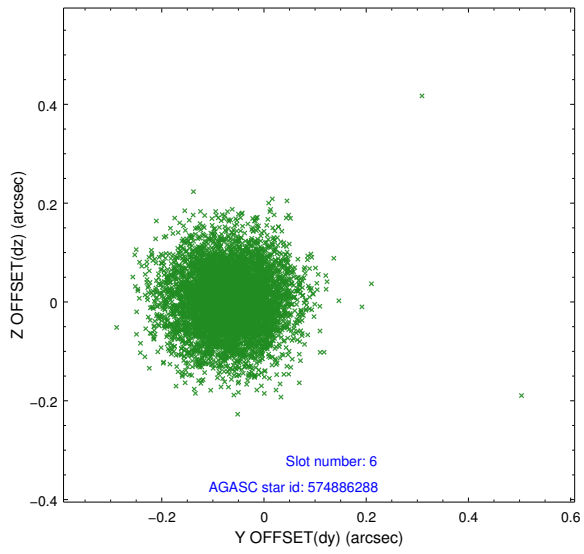
2.4.2 Slot 4



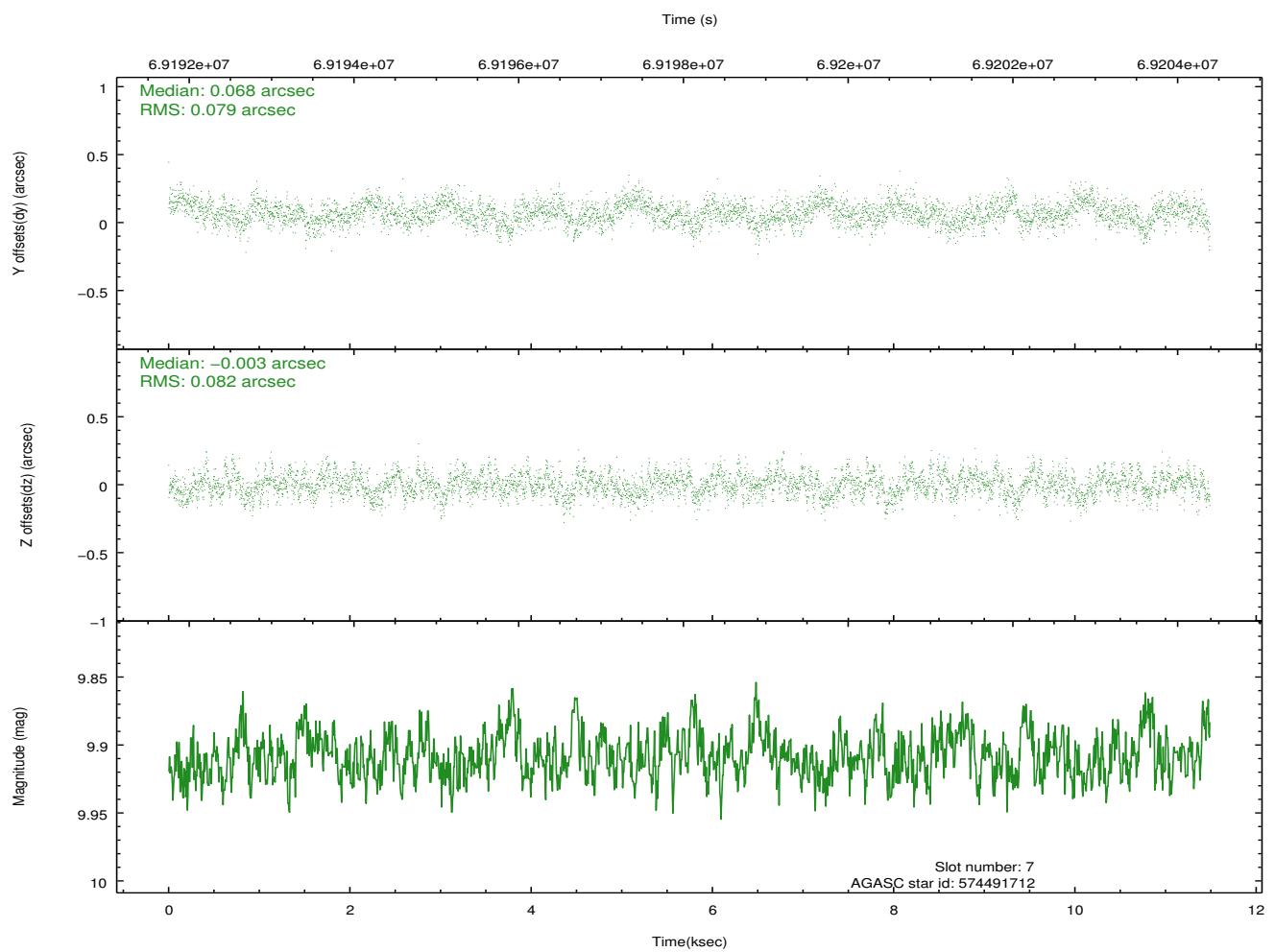
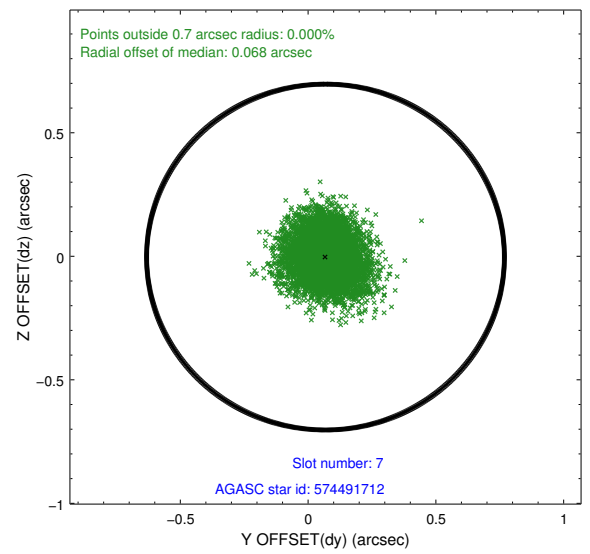
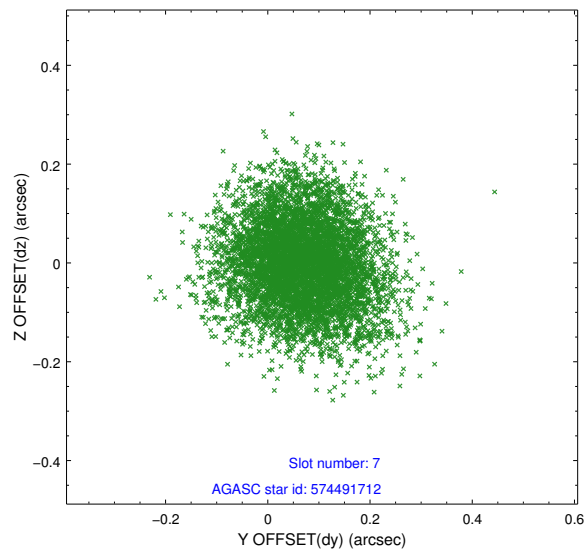
2.4.3 Slot 5



2.4.4 Slot 6

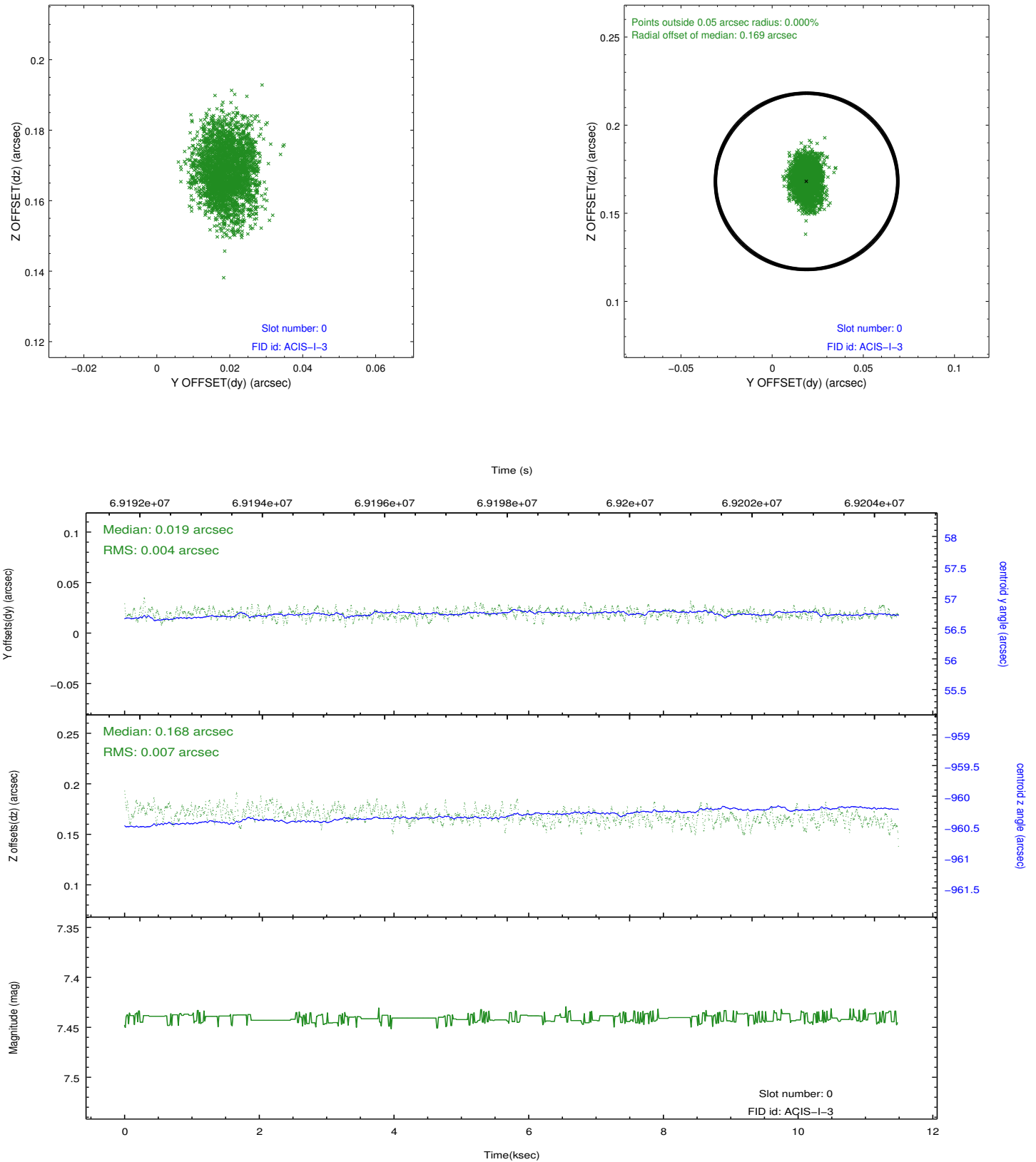


2.4.5 Slot 7

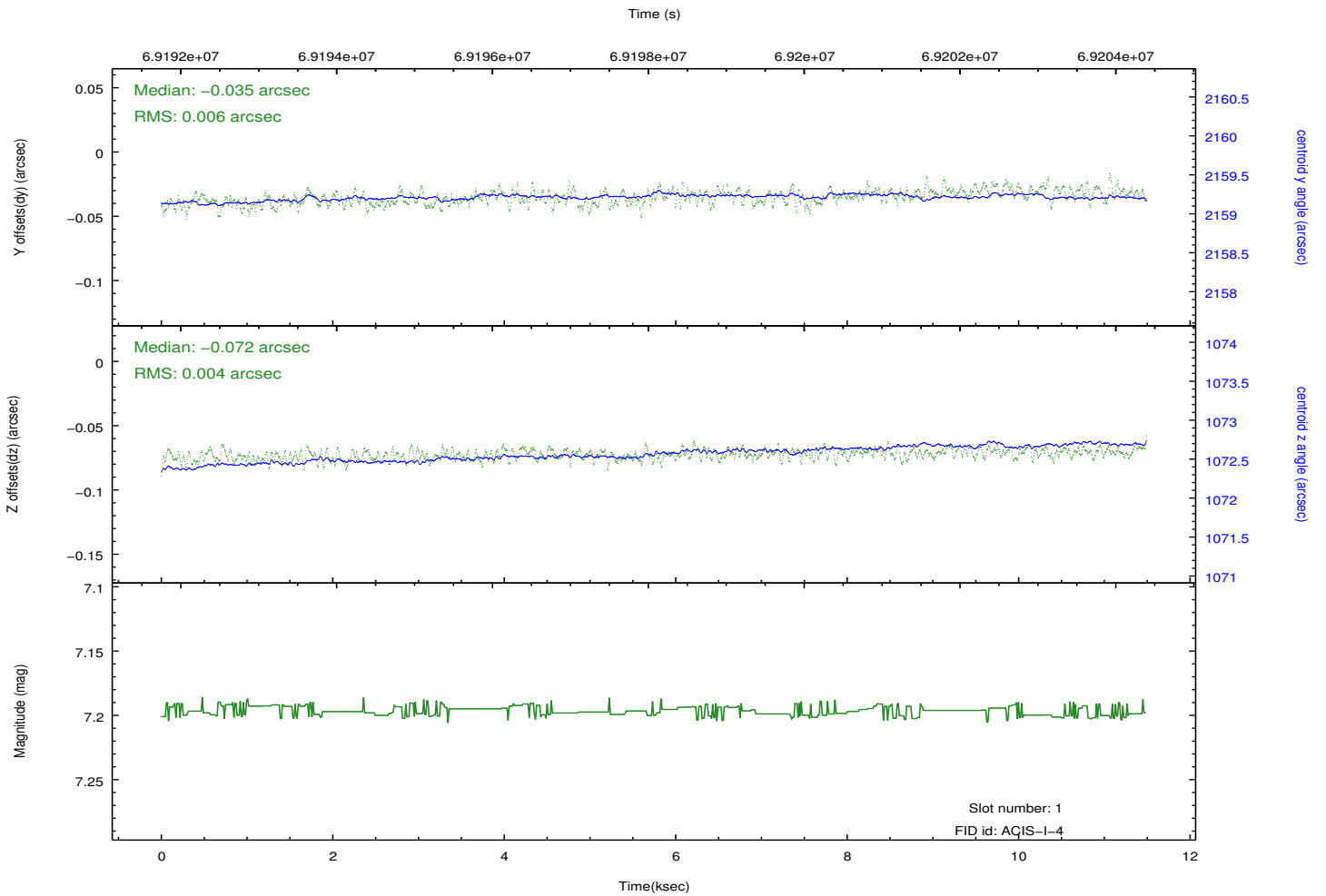
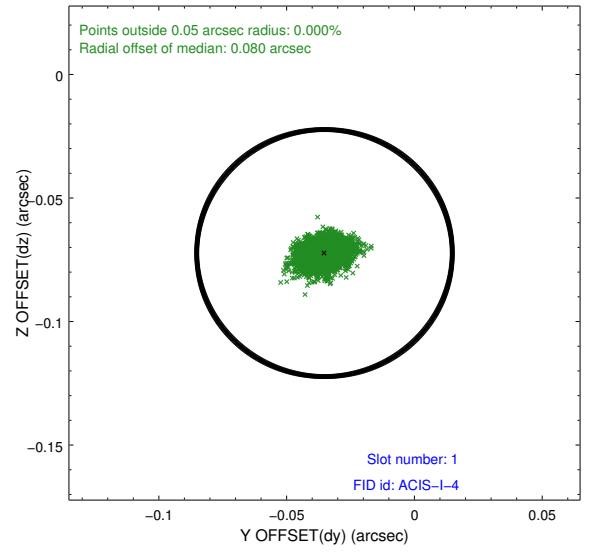
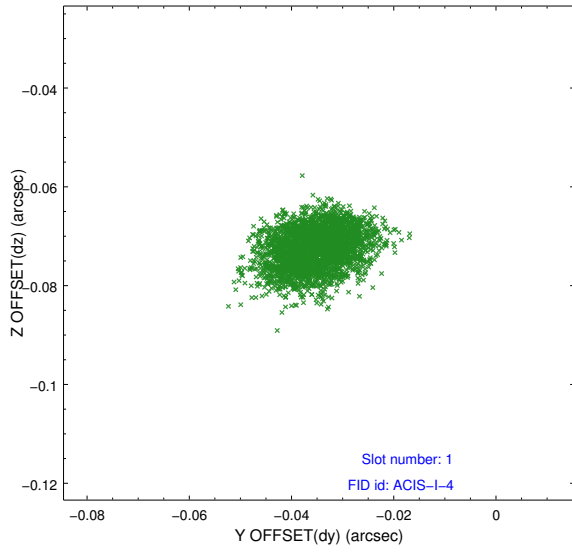


2.5 FID Slots

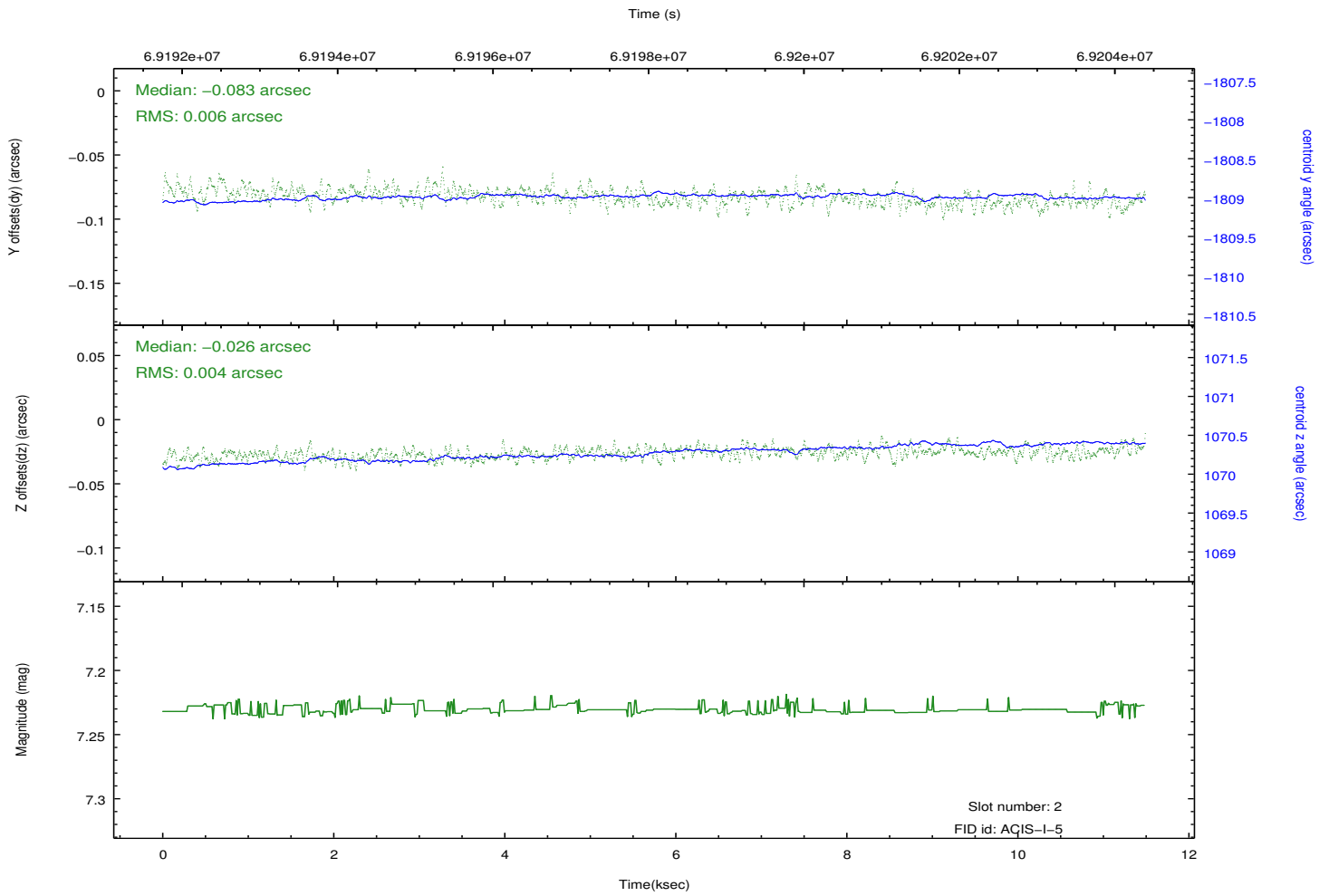
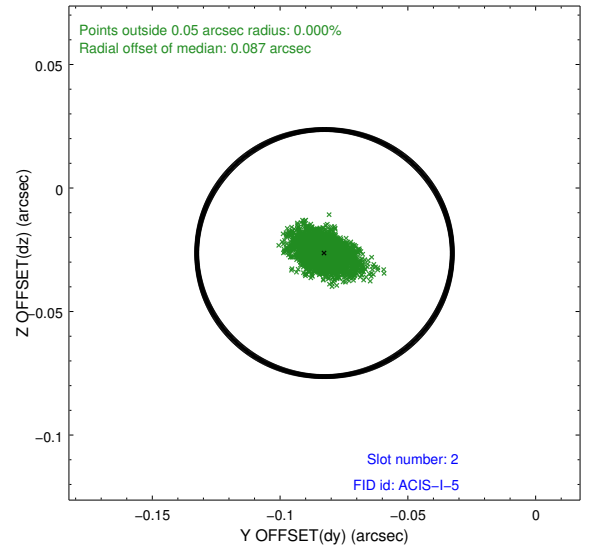
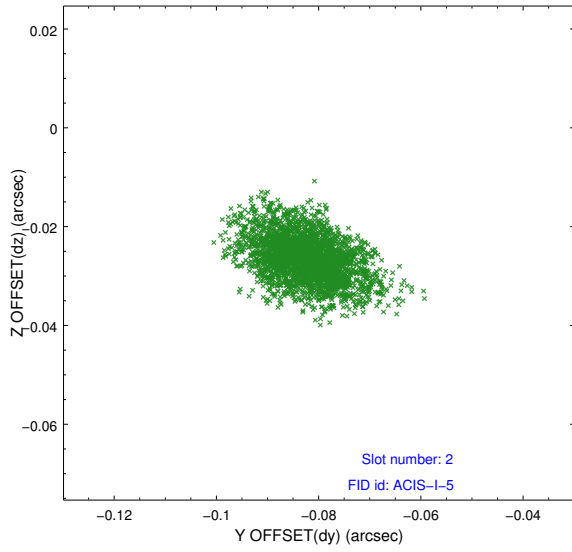
2.5.1 Slot 0



2.5.2 Slot 1



2.5.3 Slot 2



A Summary

A.1 Status

V&V Scientist	Jen Lauer
V&V Date (YYYY-MM-DD)	2012.08.27
V&V Edition	1
V&V Disposition and Status	OK
V&V Charge Time	9.046

A.2 Comments