

# V&V Reference Report

## L2 ASCDS Version : 8.4.5

Observation 3819 - L2 Version 3  
Chandra X-Ray Center

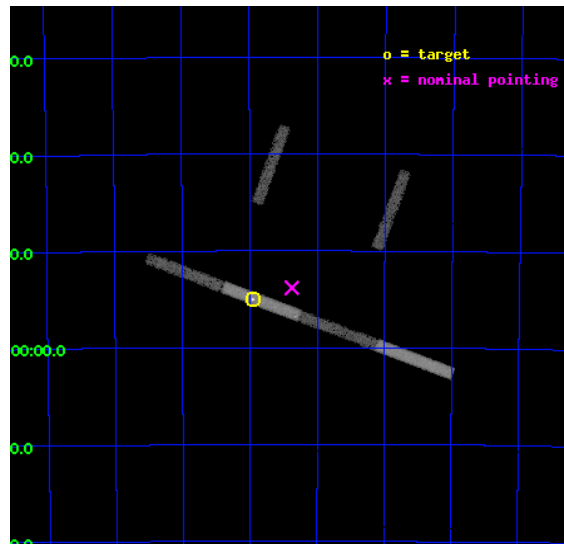
L2 Processing Date : Nov 2 2012

## Contents

<b>1</b>	<b>Front</b>	<b>2</b>
<b>2</b>	<b>OBI</b>	<b>3</b>
2.1	OBI . . . . .	3
2.1.1	Images . . . . .	3
2.1.2	Bias . . . . .	3
2.1.3	Parameters . . . . .	4
2.1.4	Events . . . . .	4
2.2	Compared Parameters . . . . .	5
2.3	Aspect . . . . .	6
2.4	Star Slots . . . . .	9
2.4.1	Slot 3 . . . . .	9
2.4.2	Slot 4 . . . . .	10
2.4.3	Slot 5 . . . . .	11
2.4.4	Slot 6 . . . . .	12
2.4.5	Slot 7 . . . . .	13
2.5	FID Slots . . . . .	14
2.5.1	Slot 0 . . . . .	14
2.5.2	Slot 1 . . . . .	15
2.5.3	Slot 2 . . . . .	16
<b>A</b>	<b>Summary</b>	<b>17</b>
A.1	Status . . . . .	17
A.2	Comments . . . . .	17

# 1 Front

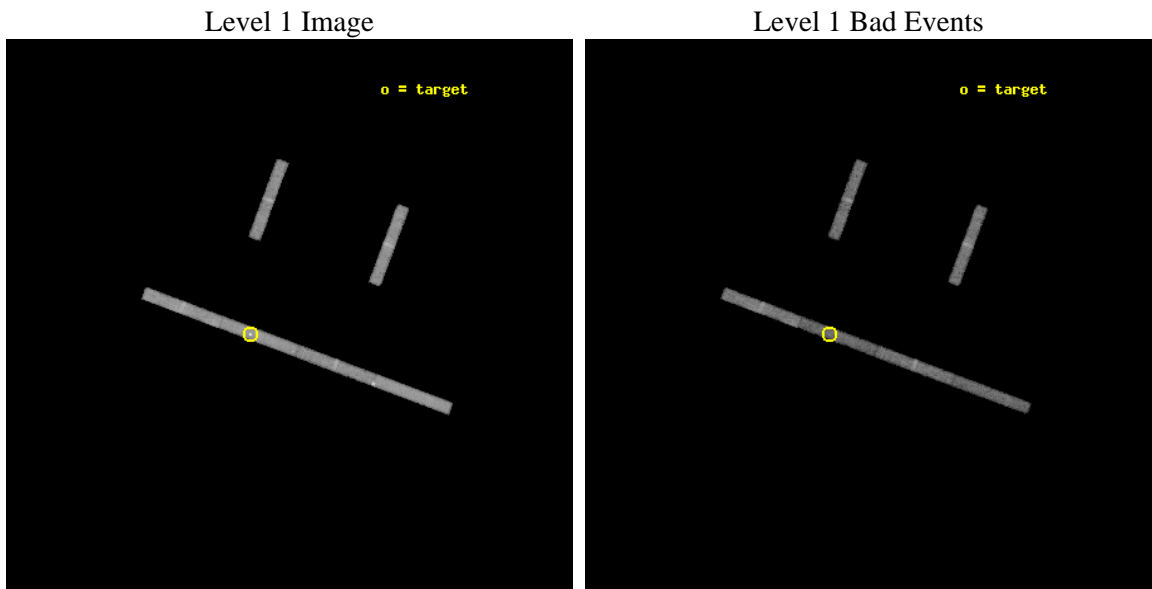
seq_num	400306	Sequence number
obs_id	3819	Observation id
title	QUIESCENT EMISSION FROM TRANSIENT ACCRETION-POWERED PULSARS	Propos
observer	PROF. LARS BILDSTEN	Principal investigator
object	A1118-616	Source name
dtcycle	0	&#160
cycle	P	events from which exps? Prim/Second/Both
ra_targ	170.238333	Observer's specified target RA [deg]
dec_targ	-61.91675	Observer's specified target Dec [deg]
ra_nom	170.09387628015	Nominal RA [deg]
dec_nom	-61.897012335196	Nominal Dec [deg]
roll_nom	200.46342535635	Nominal Roll [deg]
revision	3	Processing version of data
ontime	19605.353505731	Sum of GTIs [s]
livetime	18519.577153745	Livetime [s]
ontime2	19605.353505731	Sum of GTIs [s]
ontime3	19606.0945158	Sum of GTIs [s]
ontime5	19605.353505731	Sum of GTIs [s]
ontime6	19605.353505731	Sum of GTIs [s]
ontime7	19605.353505731	Sum of GTIs [s]
ontime8	19605.353505731	Sum of GTIs [s]
l2events	38995	Number of level 2 events



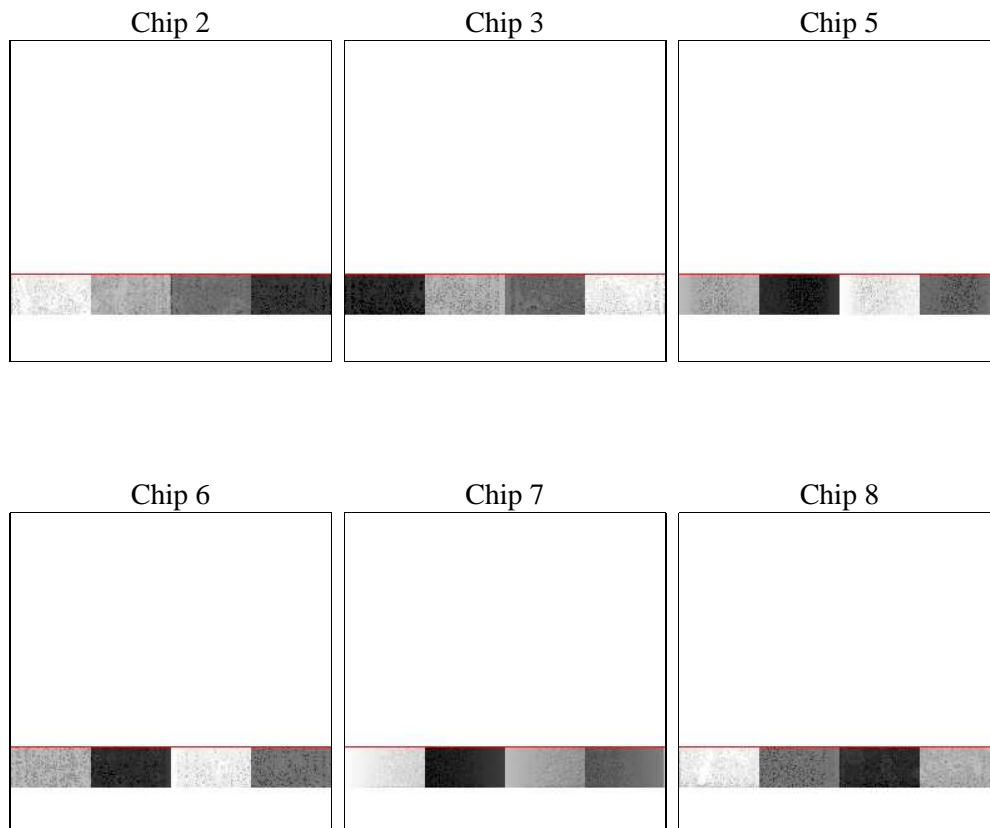
## 2 OBI

### 2.1 OBI

#### 2.1.1 Images



#### 2.1.2 Bias



### 2.1.3 Parameters

obi_num	1	Obi number	sched_exp_time	19100.000000	[s] Scheduled observation exposure time
ascdsver	8.4.5	Processing system revision	ontime	19605.353505731	Sum of GTIs [s]
caldbver	4.5.2	&#160	ontime2	19605.353505731	Sum of GTIs [s]
date	2012-11-02T15:58:58	Date and time of file creation	ontime3	19606.0945158	Sum of GTIs [s]
revision	3	Processing version of data	ontime5	19605.353505731	Sum of GTIs [s]
			ontime6	19605.353505731	Sum of GTIs [s]
			ontime7	19605.353505731	Sum of GTIs [s]
			ontime8	19605.353505731	Sum of GTIs [s]
			l1events	149733	Number of level 1 events

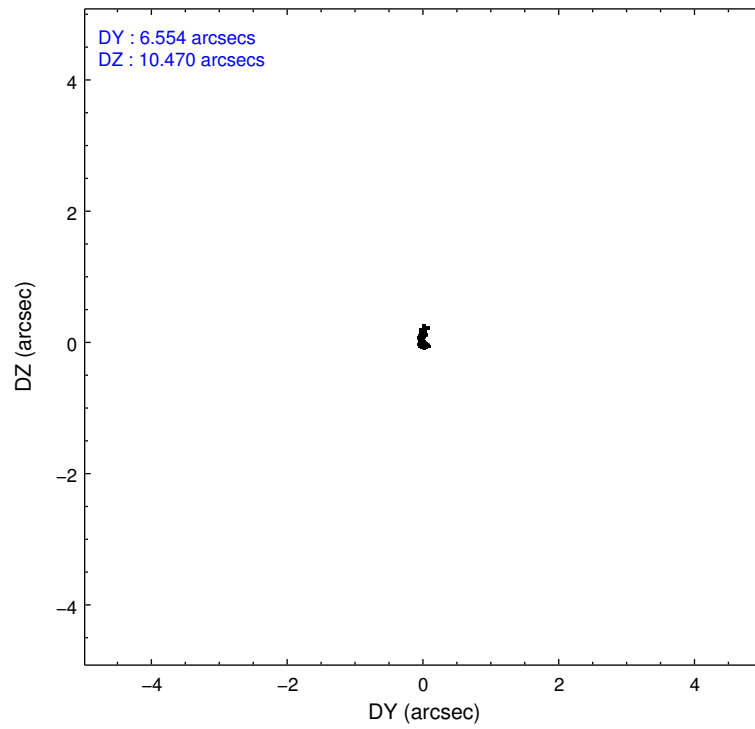
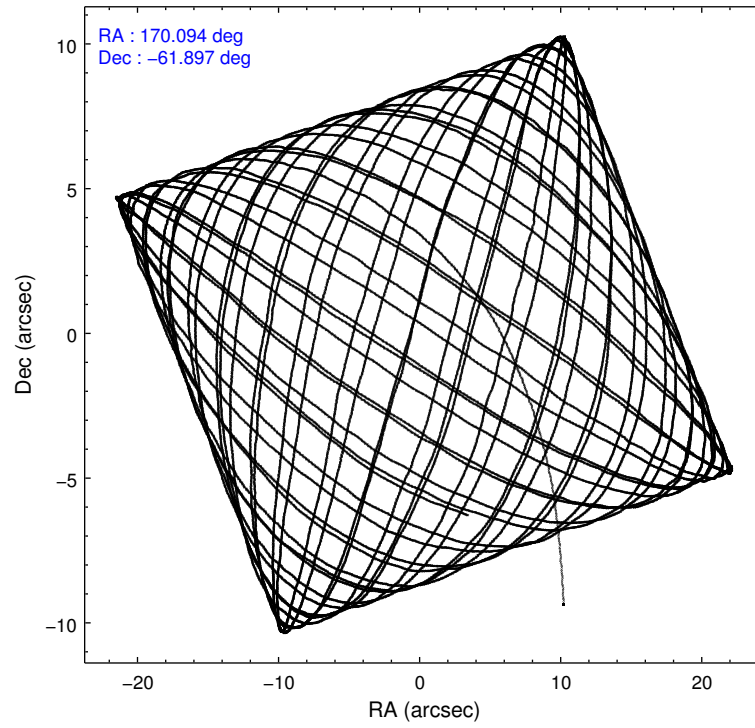
### 2.1.4 Events

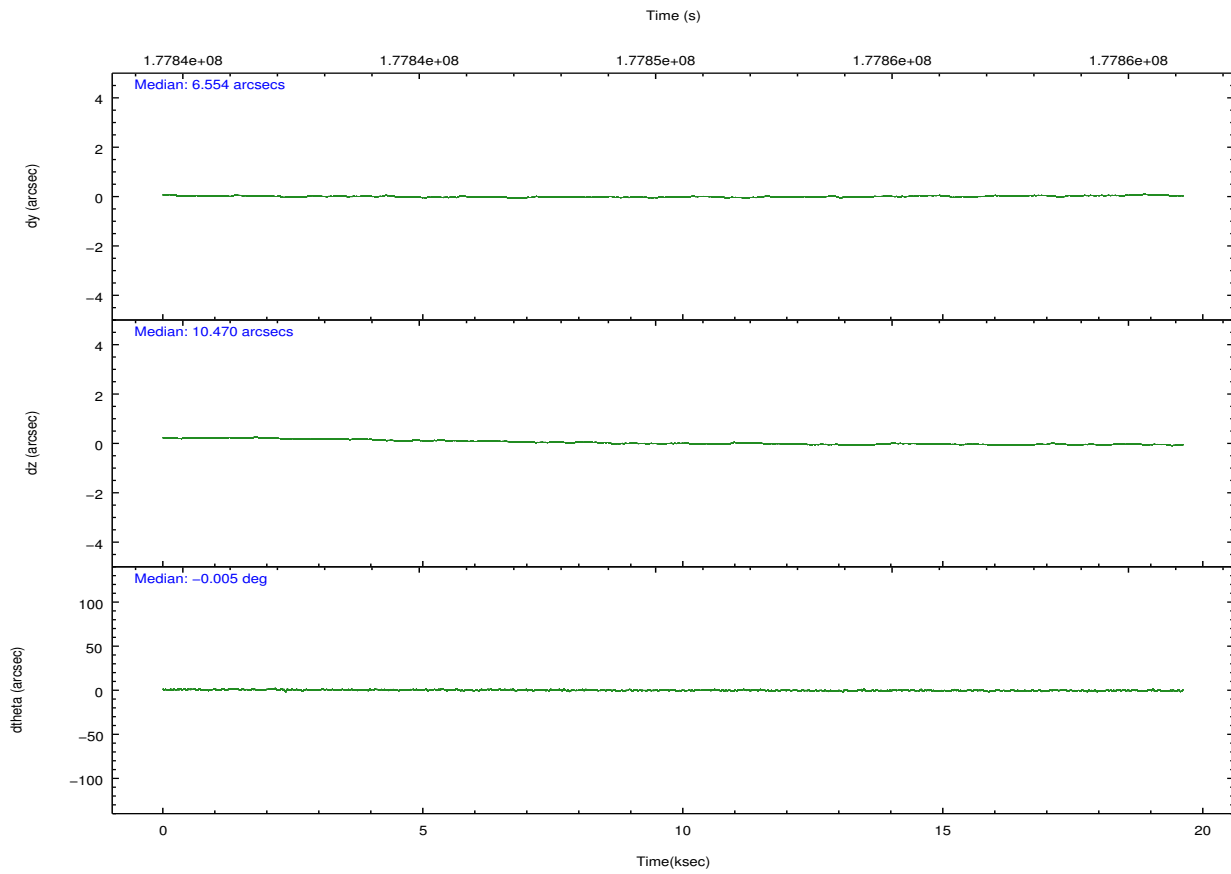
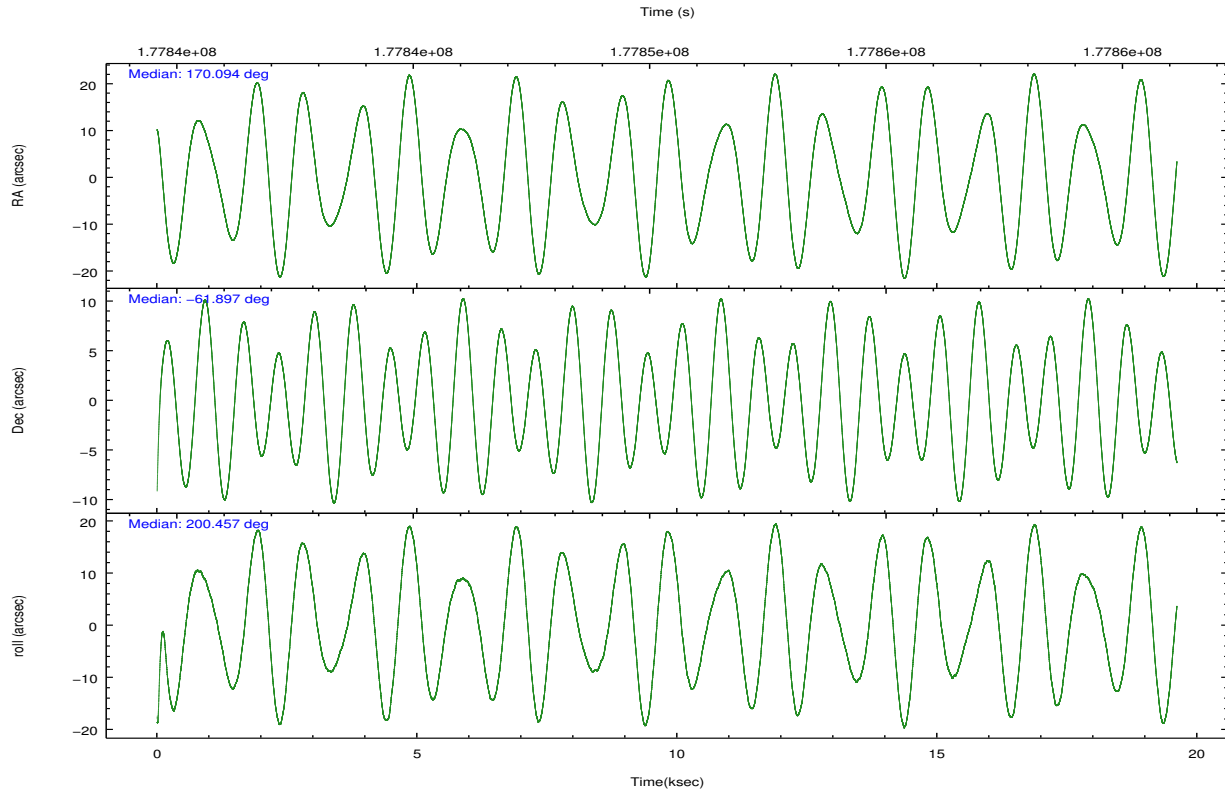
	ccd 2	ccd 3	ccd 5	ccd 6	ccd 7	ccd 8		ccd 2	ccd 3	ccd 5	ccd 6	ccd 7	ccd 8
level 1 events	22792	19701	28293	20711	29143	29093	grade 0 events	1044	977	2807	1092	2295	1661
rejected events	20118	17221	12581	18107	12401	23483		4%	4%	9%	5%	7%	5%
rejected %	88%	87%	44%	87%	42%	80%	grade 1 events	7	5	27	3	29	4
								0%	0%	0%	0%	0%	0%
							grade 2 events	482	406	3633	388	3539	1071
								2%	2%	12%	1%	12%	3%
							grade 3 events	381	385	1320	391	1777	680
								1%	1%	4%	1%	6%	2%
							grade 4 events	353	365	1376	317	1785	665
								1%	1%	4%	1%	6%	2%
							grade 5 events	605	612	2090	644	2044	868
								2%	3%	7%	3%	7%	2%
							grade 6 events	414	347	6582	416	7348	1533
								1%	1%	23%	2%	25%	5%
							grade 7 events	19506	16604	10458	17460	10326	22611
								85%	84%	36%	84%	35%	77%

## 2.2 Compared Parameters

Parameter	Planned	Actual	Parameter	Planned	Actual
Instrument	ACIS	ACIS	Obspar format version number	7	7
Detector	ACIS-235678	ACIS-235678	Obspar file type	PREDICTED	ACTUAL
Grating	NONE	NONE	Obspar update status	NONE	UPDATED
Data mode	FAINT	FAINT	Number of optional ACIS chips dropped	0	0
Observation mode	POINTING	POINTING	On-chip summing requested	N	N
[deg] Pointing RA	170.130150	170.0938762801525	Subarray requested	CUSTOM	1/8
[deg] Pointing Dec	-61.875767	-61.89701233519648	Subarray start row	150	150
[deg] Pointing Roll	200.338815	200.4634253563534	Subarray row count	128	128
[mm] SIM focus pos	-0.684267	-0.6828225247311905	Alternating exposures requested	N	N
[mm] SIM defocus	0	0.001444936568705701	[s] Primary exposure time	0.000000	0.7
[mm] SIM translation stage pos	-190.132523	-190.1400660498719			
[mm] SIM translation stage offset	0	0.00754346686406393			
[s] Observation start time (MET)	177841077.184000	177839936.41605			
Observation start date	2003-08-21T08:16:53	2003-08-21T07:58:56			
[s] Observation end time (MET)	177860177.184000	177861899.09199			
Observation end date	2003-08-21T13:35:13	2003-08-21T14:04:59			
Read mode	TIMED	TIMED			

## 2.3 Aspect



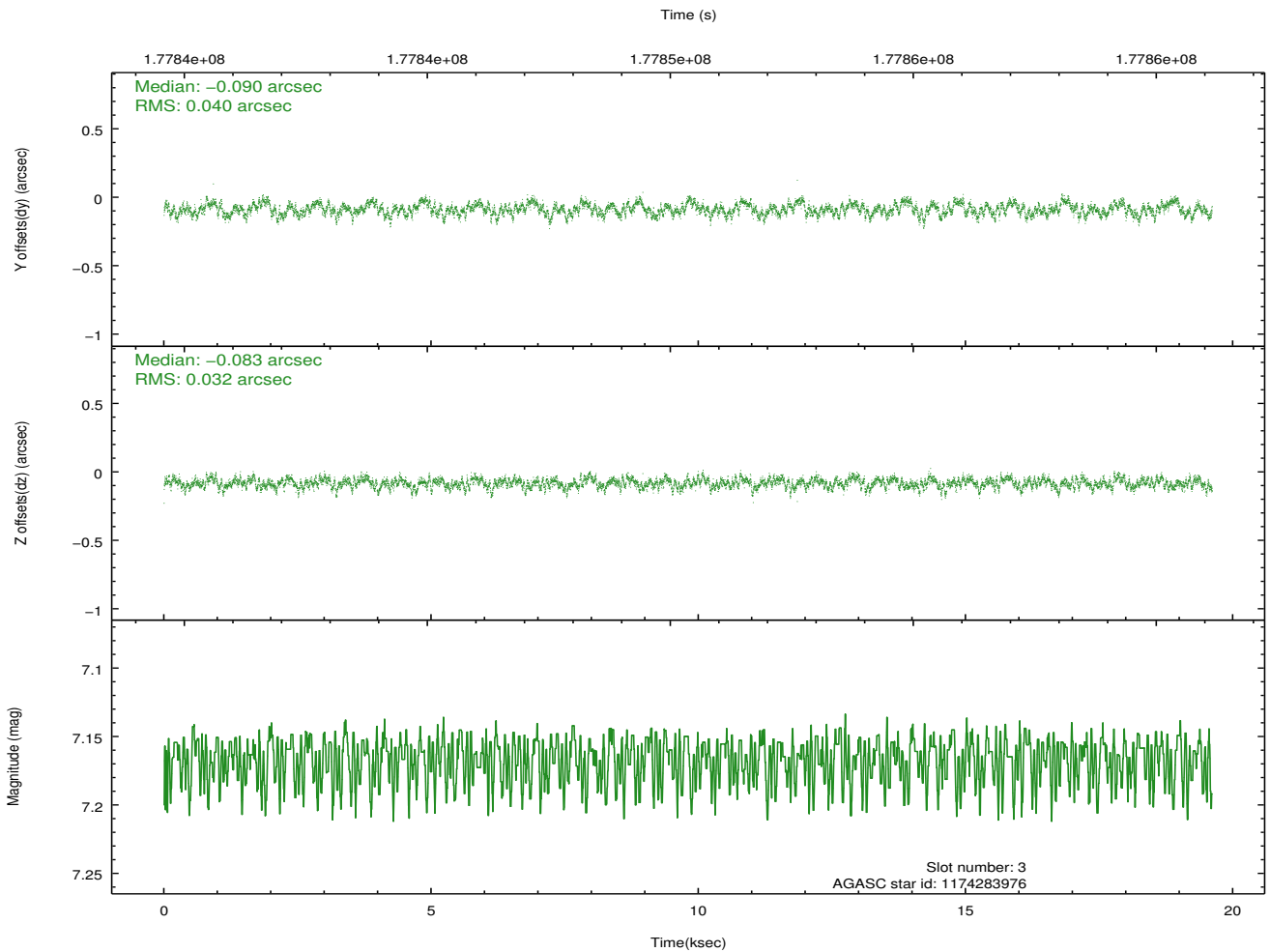
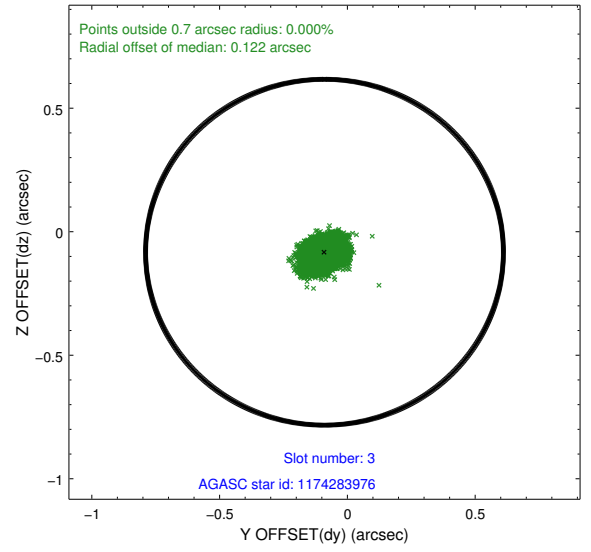
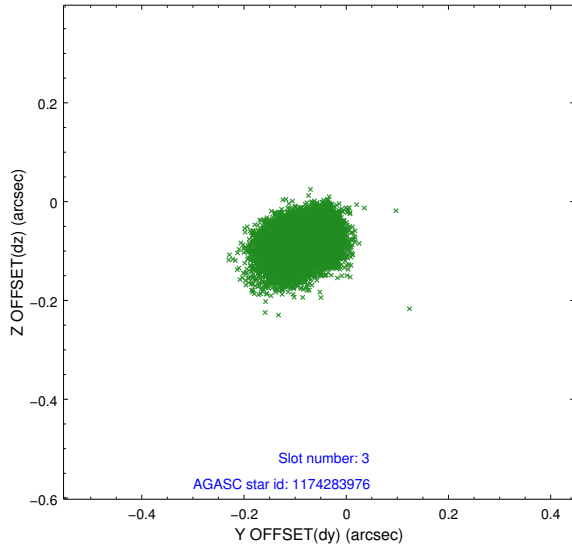


### Slot Statistics

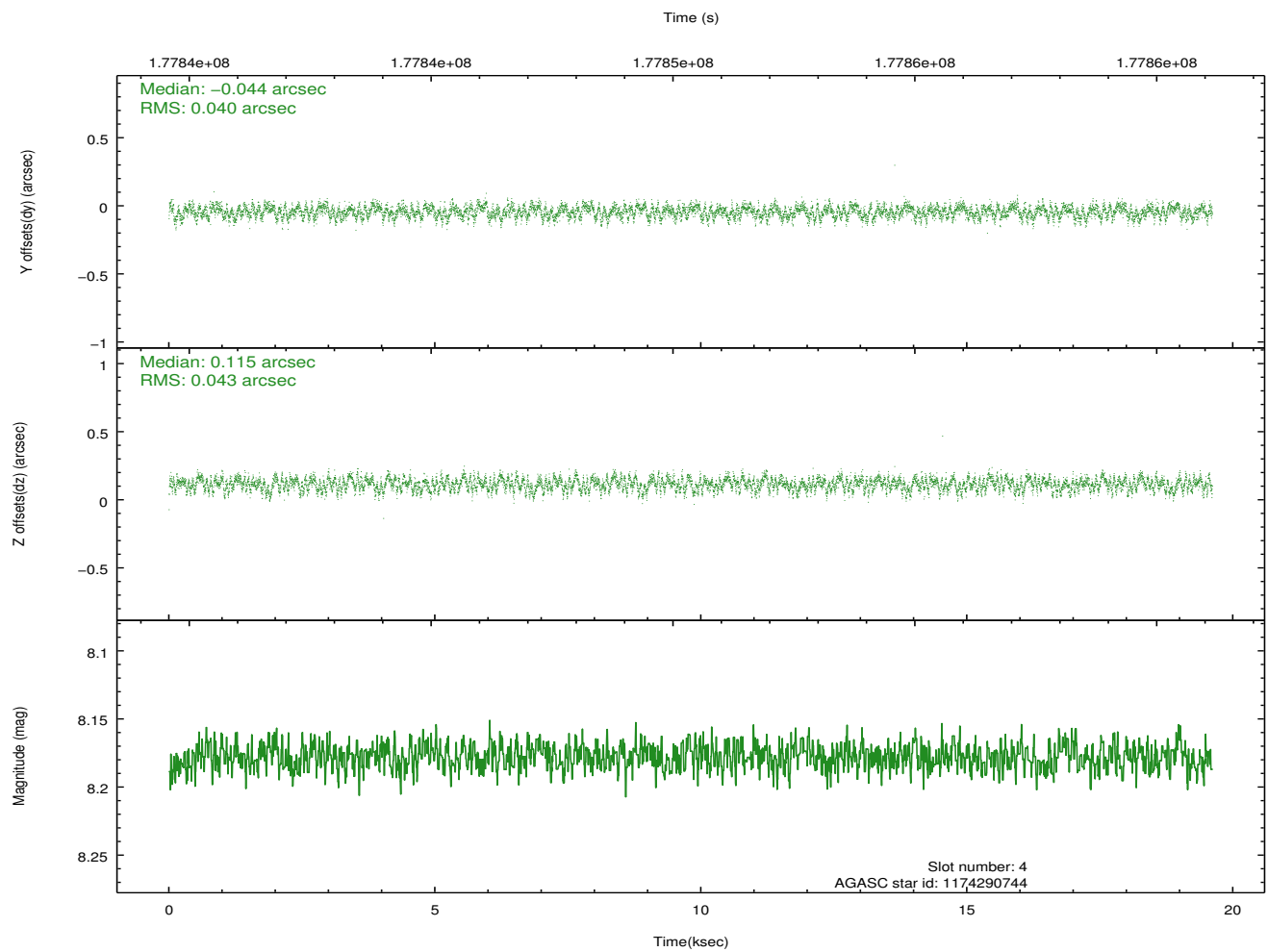
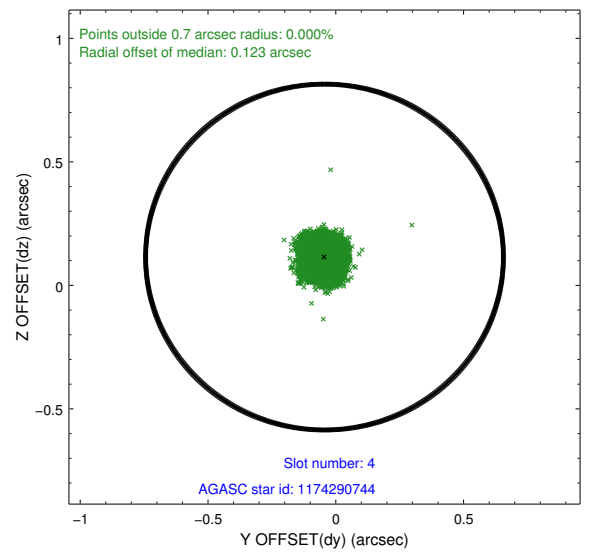
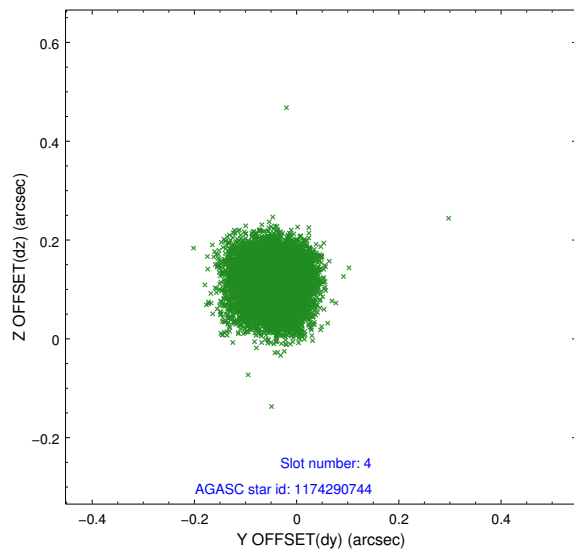
slot	status	id	mag	n_pts	med_dy	med_dz	dr1	dr2	ra	dec	mean_y	mean_z
0	FID	ACIS-S-1	7.18	4782	0.041	-0.014	0.007	0.013	0.000000	0.000000	936.76	-1727.43
1	FID	ACIS-S-2	7.10	4779	-0.037	0.012	0.008	0.014	0.000000	0.000000	-759.12	-1732.13
2	FID	ACIS-S-5	7.23	4779	-0.027	0.009	0.007	0.012	0.000000	0.000000	-1812.53	169.99
3	GUIDE	1174283976	7.16	9559	-0.090	-0.083	0.055	0.087	170.390254	-61.226219	-1234.76	-2035.34
4	GUIDE	1174290744	8.18	9559	-0.044	0.115	0.064	0.098	171.197974	-61.558775	-2108.18	-419.72
5	GUIDE	1174800184	7.78	9560	-0.103	-0.064	0.054	0.086	170.745254	-62.407221	-295.60	2155.12
6	GUIDE	1174277600	8.62	9561	0.161	-0.044	0.078	0.124	168.590455	-61.587206	2123.03	-1860.82
7	GUIDE	1174805272	9.25	9557	0.074	0.077	0.091	0.146	170.397032	-62.374213	206.34	1838.38

## 2.4 Star Slots

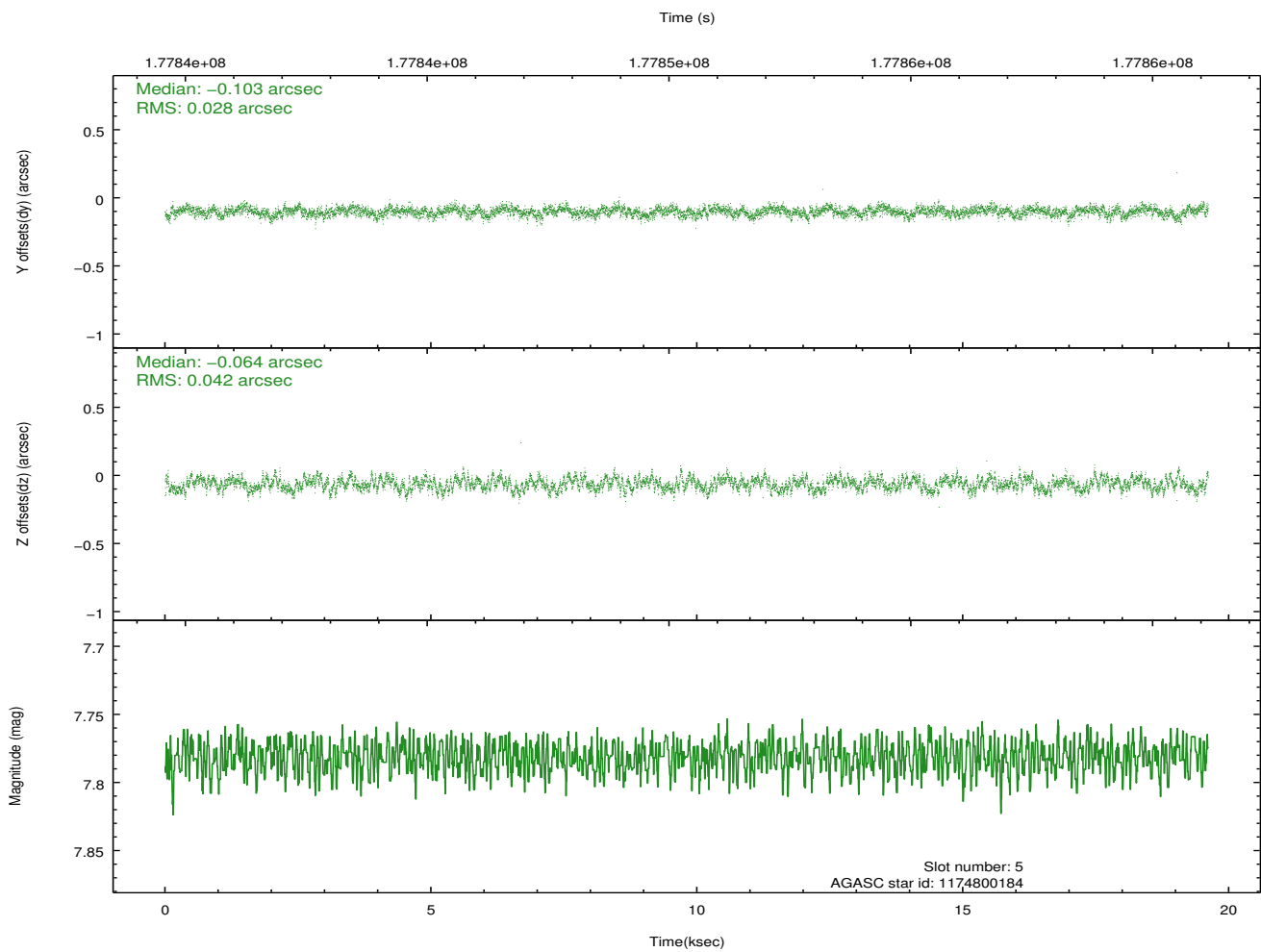
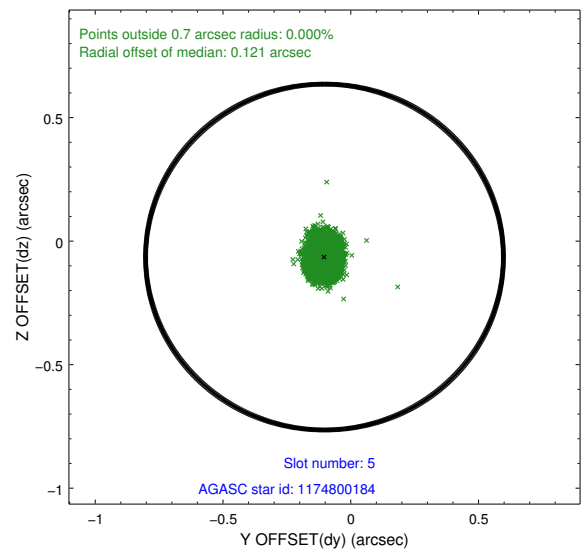
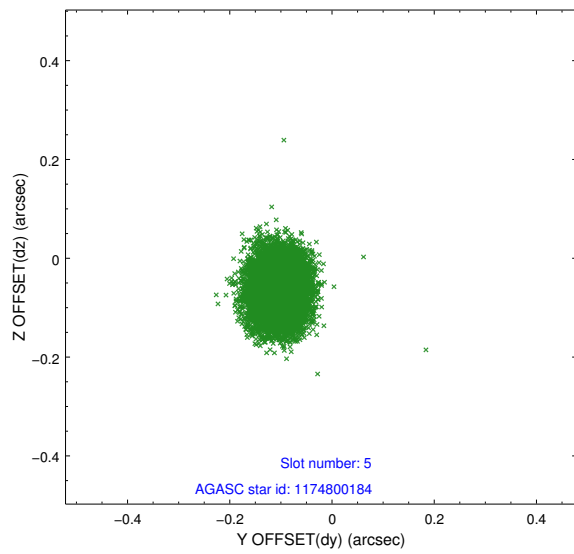
### 2.4.1 Slot 3



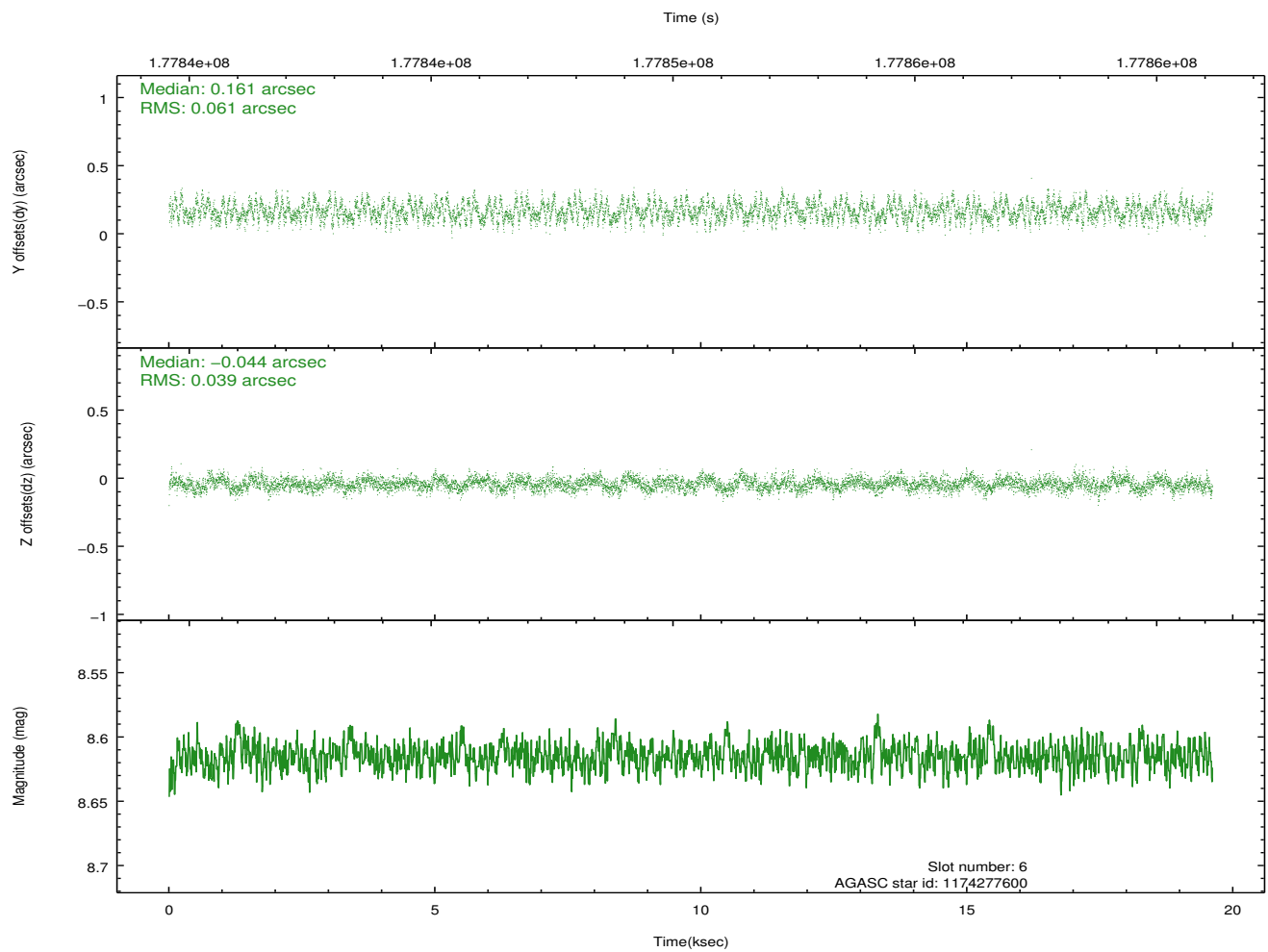
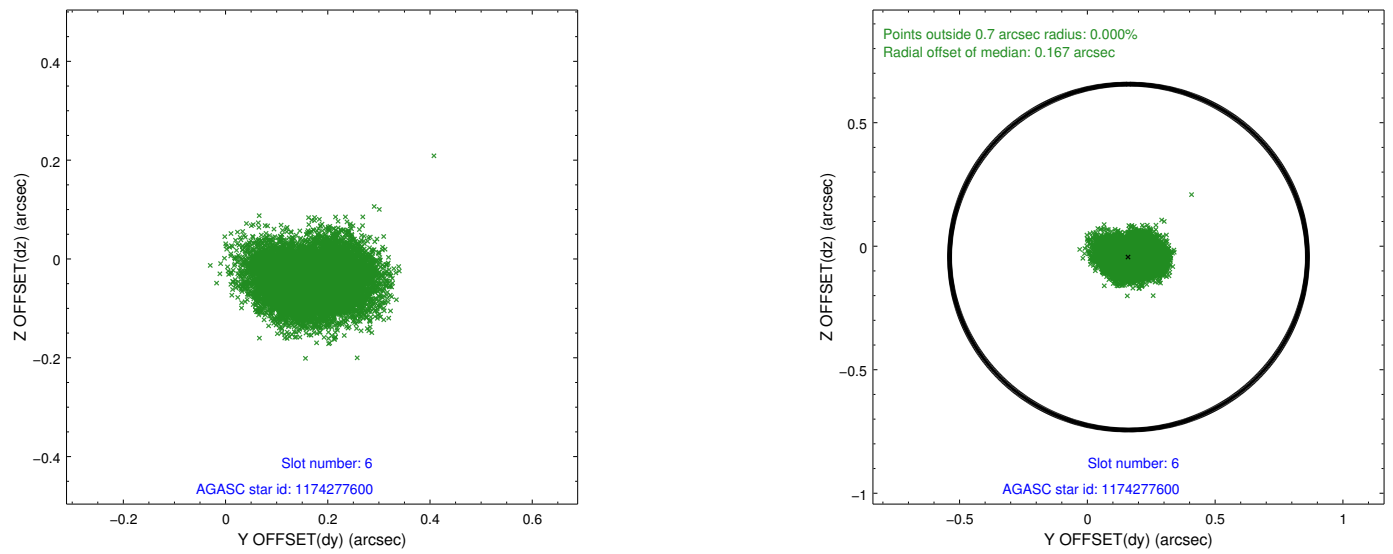
## 2.4.2 Slot 4



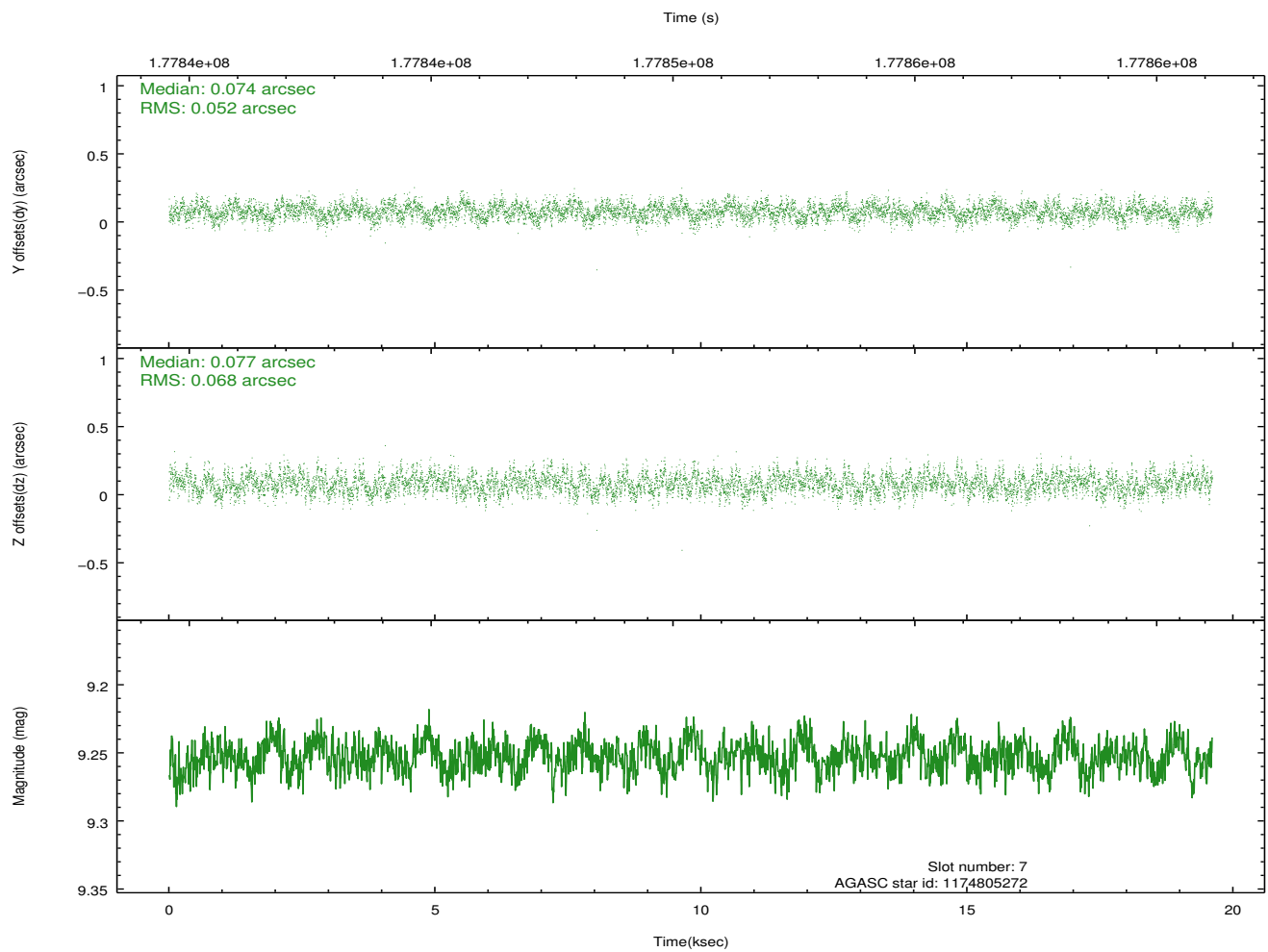
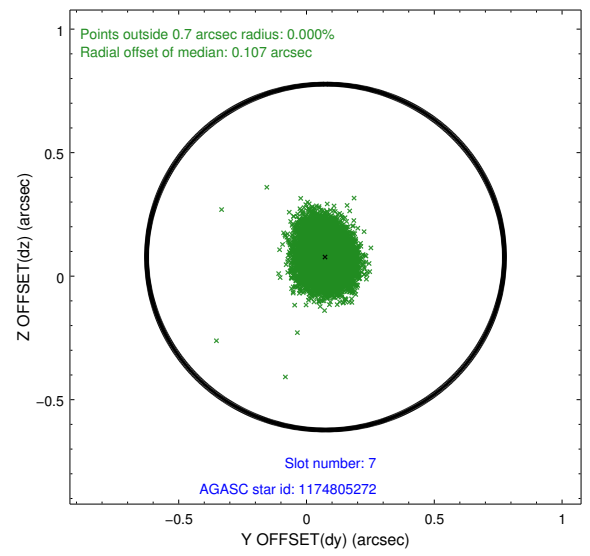
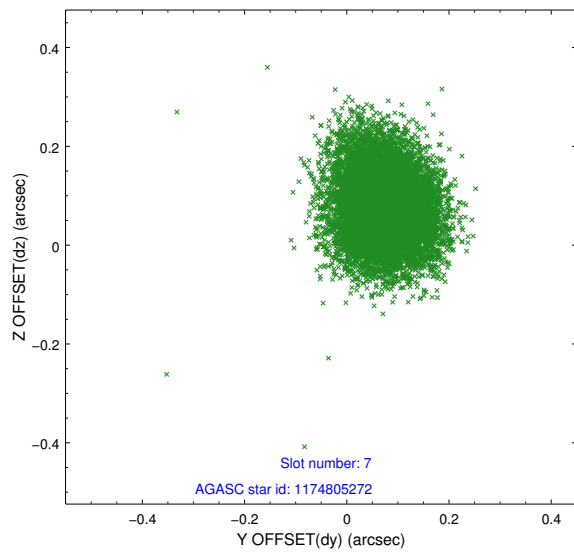
### 2.4.3 Slot 5



## 2.4.4 Slot 6

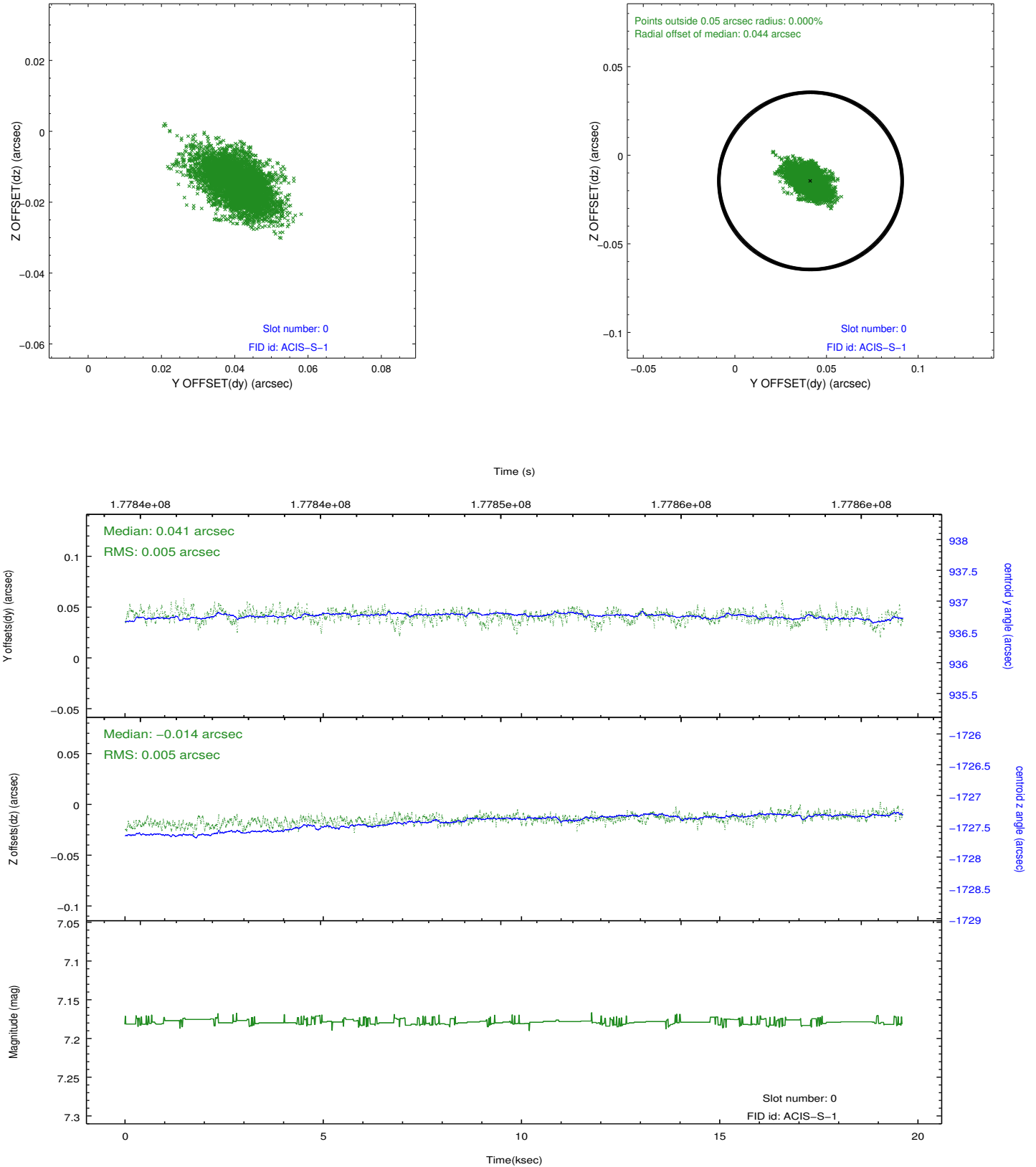


## 2.4.5 Slot 7

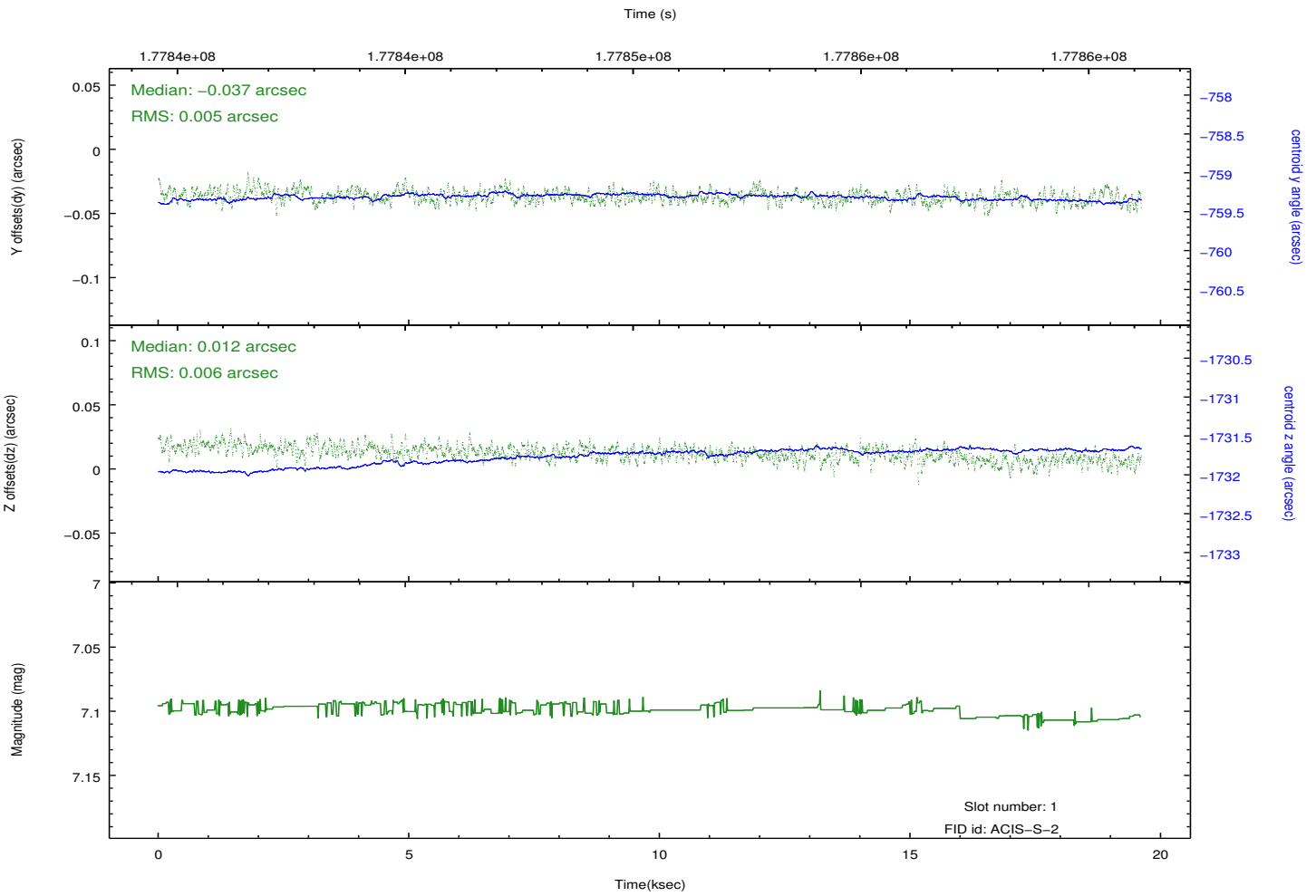
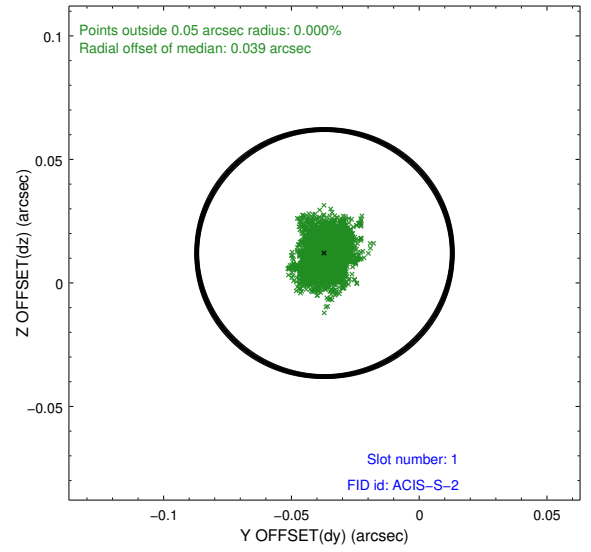
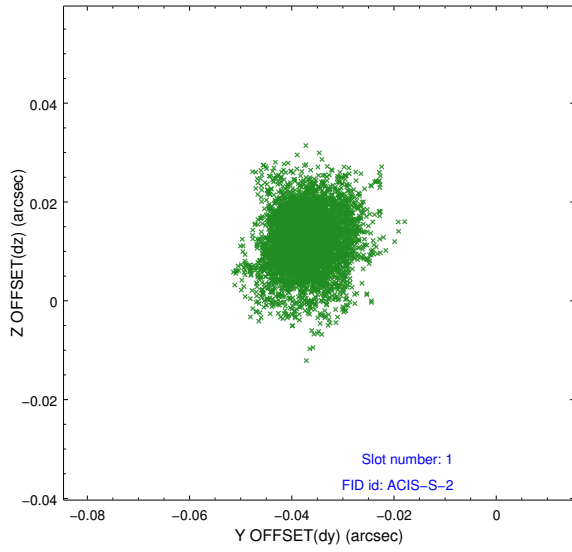


## 2.5 FID Slots

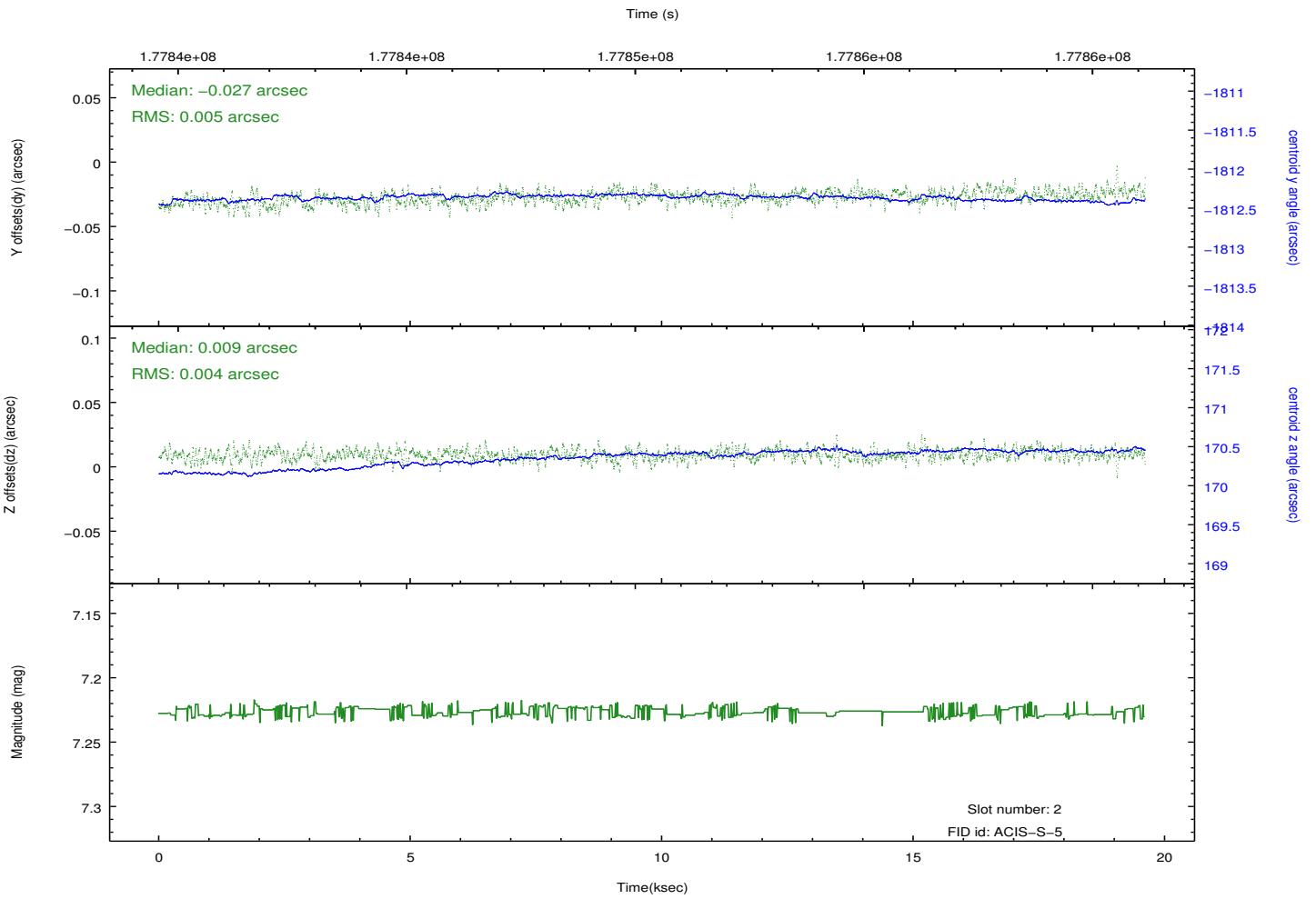
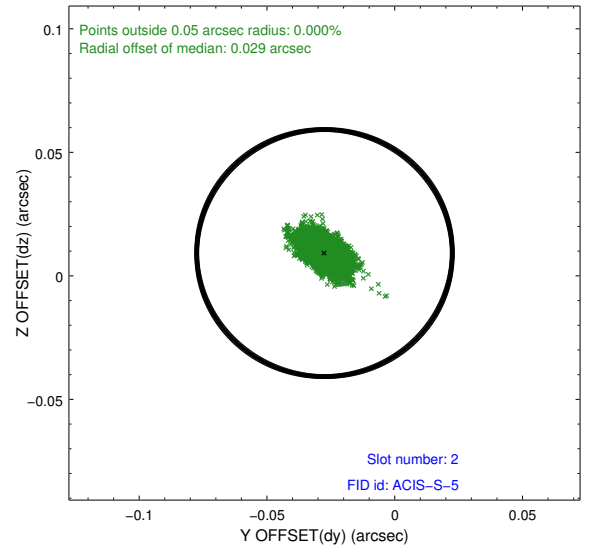
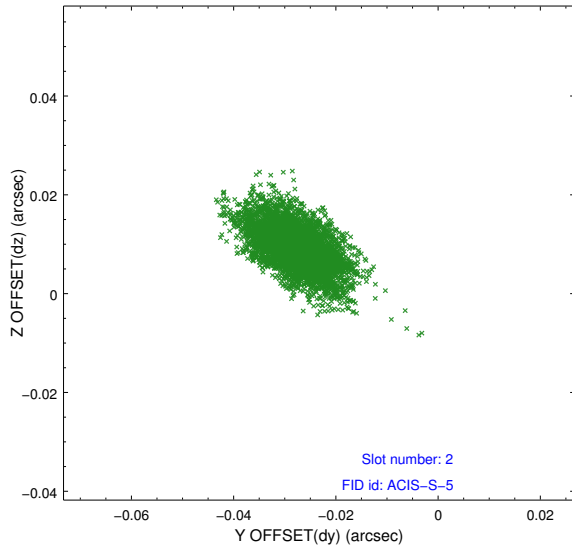
### 2.5.1 Slot 0



## 2.5.2 Slot 1



### 2.5.3 Slot 2



# A Summary

## A.1 Status

V&V Scientist	Beth Sundheim
V&V Date (YYYY-MM-DD)	2012.11.16
V&V Edition	1
V&V Disposition and Status	OK
V&V Charge Time	19.605

## A.2 Comments