

# V&V Reference Report

## L2 ASCDS Version : 8.4.5

Observation 3829 - L2 Version 3  
Chandra X-Ray Center

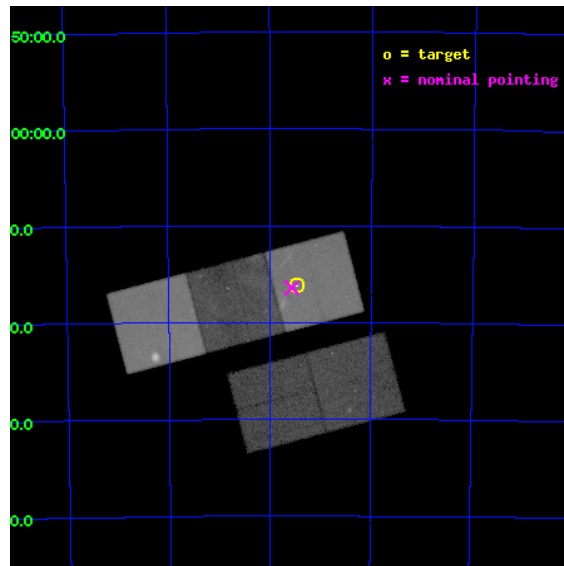
L2 Processing Date : Nov 14 2012

## Contents

<b>1</b>	<b>Front</b>	<b>2</b>
<b>2</b>	<b>OBI</b>	<b>3</b>
2.1	OBI . . . . .	3
2.1.1	Images . . . . .	3
2.1.2	Bias . . . . .	3
2.1.3	Parameters . . . . .	4
2.1.4	Events . . . . .	4
2.2	Compared Parameters . . . . .	5
2.3	Aspect . . . . .	6
2.4	Star Slots . . . . .	9
2.4.1	Slot 3 . . . . .	9
2.4.2	Slot 4 . . . . .	10
2.4.3	Slot 5 . . . . .	11
2.4.4	Slot 6 . . . . .	12
2.4.5	Slot 7 . . . . .	13
2.5	FID Slots . . . . .	14
2.5.1	Slot 0 . . . . .	14
2.5.2	Slot 1 . . . . .	15
2.5.3	Slot 2 . . . . .	16
<b>A</b>	<b>Summary</b>	<b>17</b>
A.1	Status . . . . .	17
A.2	Comments . . . . .	17

# 1 Front

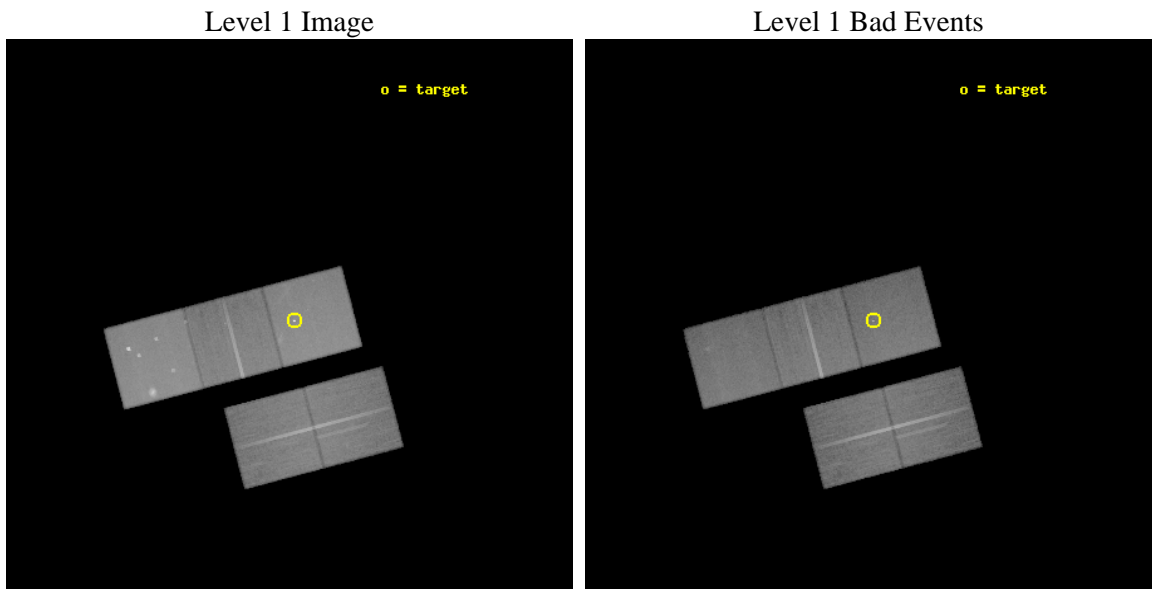
seq_num	500308	Sequence number
obs_id	3829	Observation id
title	MONITORING THE BIRTH OF SUPERNOVA REMNANT SNR1987A	Proposal title
observer	Prof. David Burrows	Principal investigator
object	SNR1987A	Source name
dtcycle	0	&#160
cycle	P	events from which exps? Prim/Second/Both
ra_targ	83.866667	Observer's specified target RA [deg]
dec_targ	-69.26975	Observer's specified target Dec [deg]
ra_nom	83.891435291561	Nominal RA [deg]
dec_nom	-69.273800679752	Nominal Dec [deg]
roll_nom	345.31757202483	Nominal Roll [deg]
revision	3	Processing version of data
ontime	49658.858934253	Sum of GTIs [s]
livetime	49010.029383957	Livetime [s]
ontime2	49652.577013791	Sum of GTIs [s]
ontime3	49655.717974037	Sum of GTIs [s]
ontime5	49658.858934253	Sum of GTIs [s]
ontime6	49661.999904484	Sum of GTIs [s]
ontime7	49658.858934253	Sum of GTIs [s]
l2events	567553	Number of level 2 events



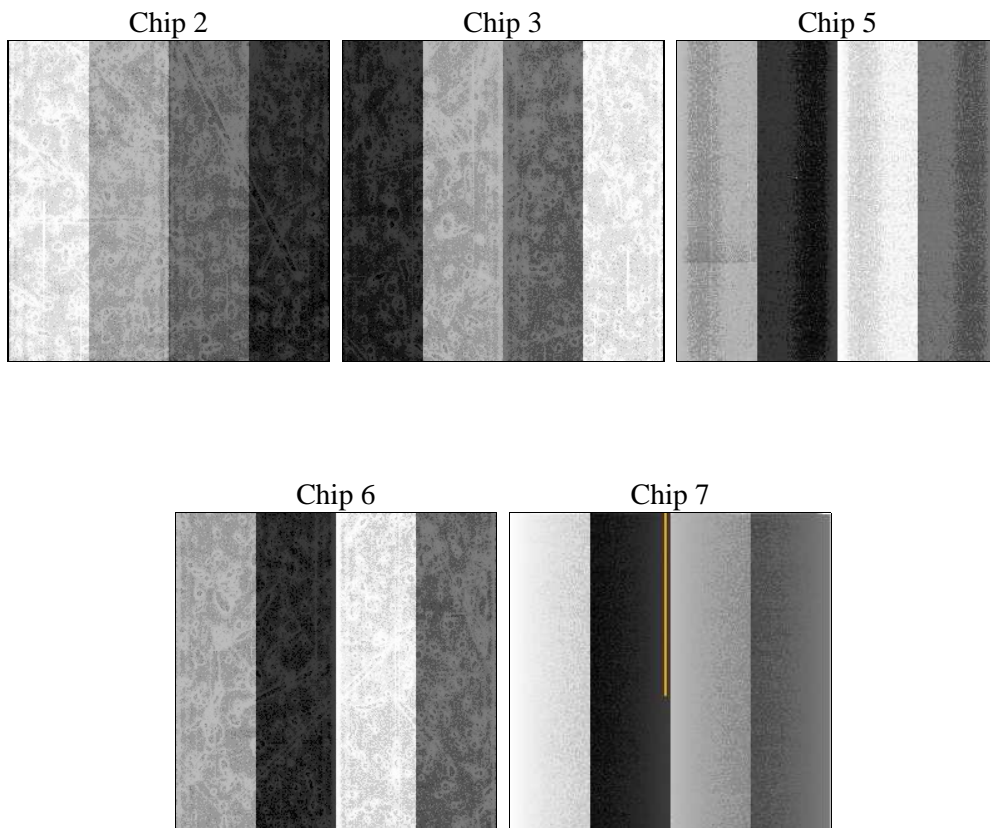
## 2 OBI

### 2.1 OBI

#### 2.1.1 Images



#### 2.1.2 Bias



### 2.1.3 Parameters

obi_num	2	Obi number	sched_exp_time	49500.000000	[s] Scheduled observation exposure time
ascdsver	8.4.5	Processing system revision	ontime	49658.858934253	Sum of GTIs [s]
caldbver	4.5.2	&#160	ontime2	49652.577013791	Sum of GTIs [s]
date	2012-11-14T08:06:13	Date and time of file creation	ontime3	49655.717974037	Sum of GTIs [s]
revision	3	Processing version of data	ontime5	49658.858934253	Sum of GTIs [s]
			ontime6	49661.999904484	Sum of GTIs [s]
			ontime7	49658.858934253	Sum of GTIs [s]
			l1events	1943926	Number of level 1 events

### 2.1.4 Events

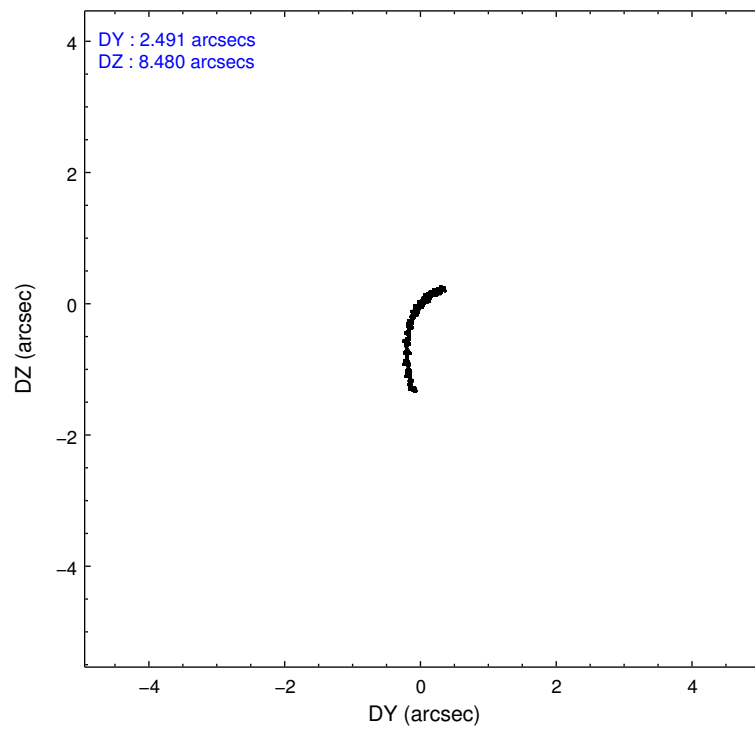
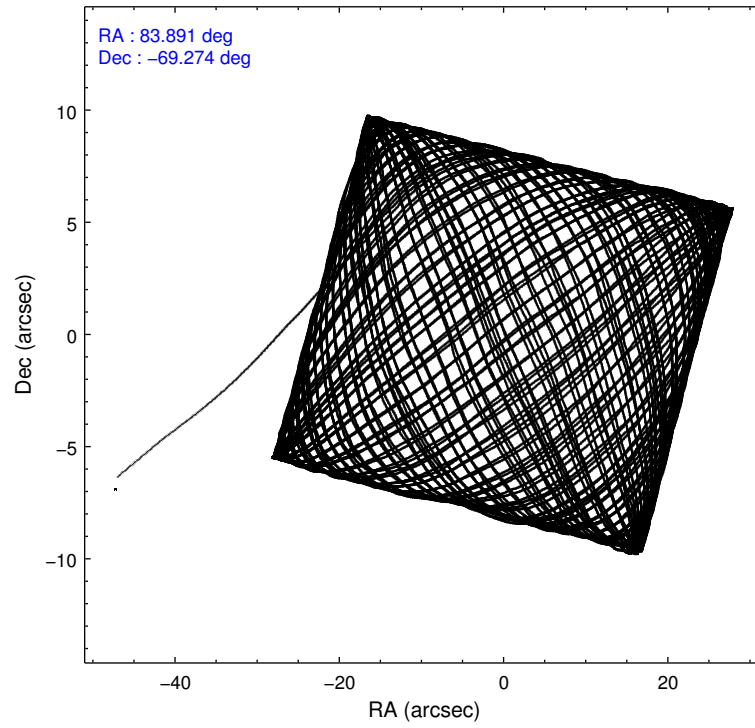
	ccd 2	ccd 3	ccd 5	ccd 6	ccd 7
level 1 events	319675	314364	504905	343362	461620
rejected events	275500	270358	252165	288179	250135
rejected %	86%	86%	49%	83%	54%

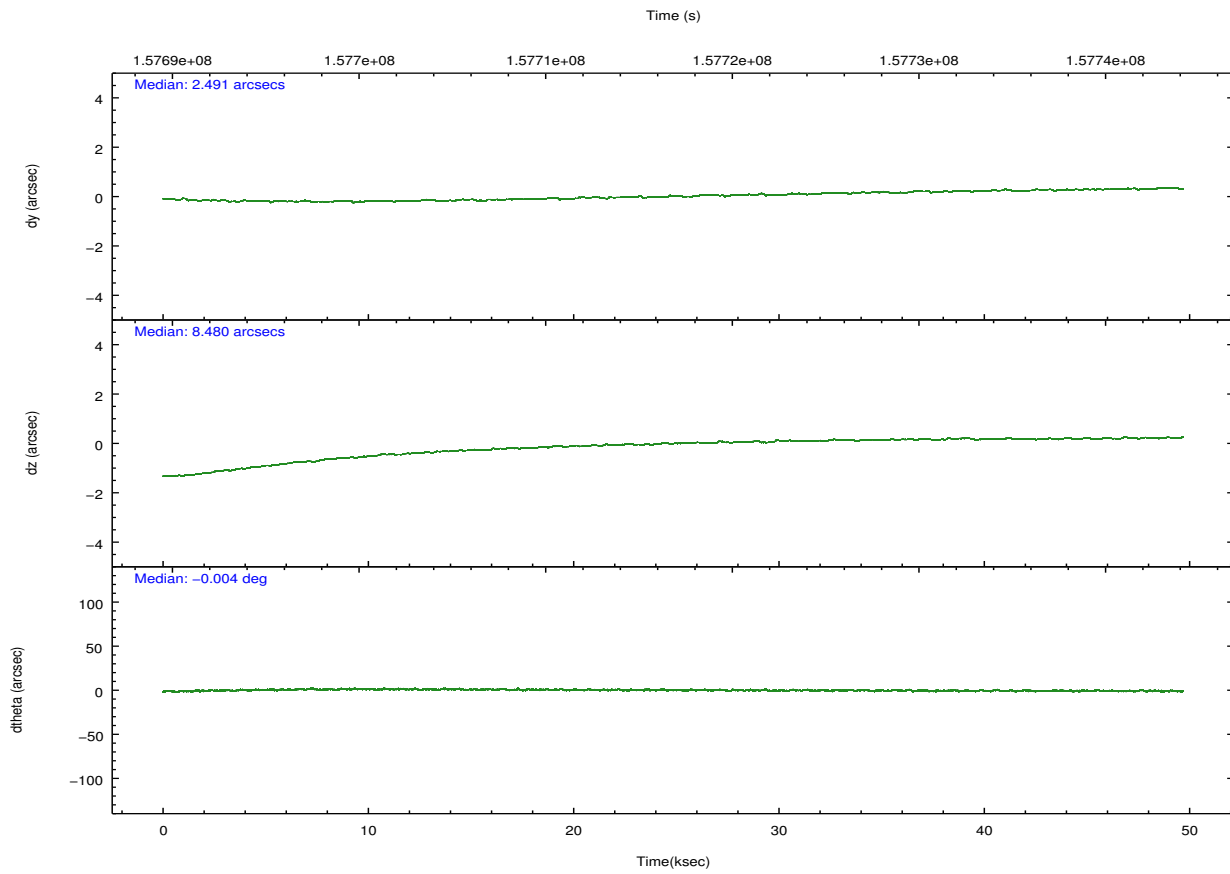
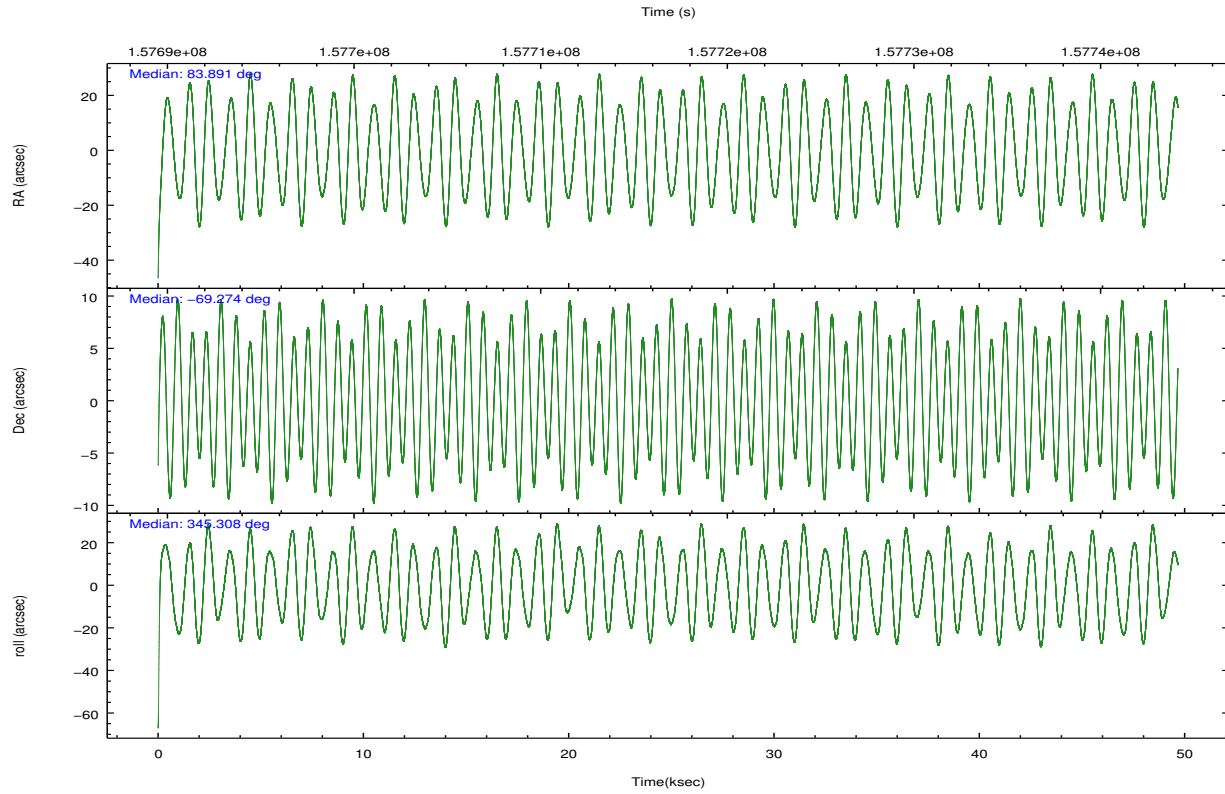
	ccd 2	ccd 3	ccd 5	ccd 6	ccd 7
grade 0 events	22887	22602	42174	30548	27627
	7%	7%	8%	8%	5%
grade 1 events	204	201	886	179	562
	0%	0%	0%	0%	0%
grade 2 events	7778	7469	72927	8986	43994
	2%	2%	14%	2%	9%
grade 3 events	3805	3778	12153	4091	20025
	1%	1%	2%	1%	4%
grade 4 events	3808	3860	11887	4000	19796
	1%	1%	2%	1%	4%
grade 5 events	11724	13633	35237	14470	41000
	3%	4%	6%	4%	8%
grade 6 events	6082	6475	114355	7780	100712
	1%	2%	22%	2%	21%
grade 7 events	263387	256346	215286	273308	207904
	82%	81%	42%	79%	45%

## 2.2 Compared Parameters

Parameter	Planned	Actual	Parameter	Planned	Actual
Instrument	ACIS	ACIS	Obspar format version number	7	7
Detector	ACIS-23567	ACIS-23567	Obspar file type	PREDICTED	ACTUAL
Grating	NONE	NONE	Obspar update status	NONE	UPDATED
Data mode	FAINT	FAINT	Number of optional ACIS chips dropped	0	0
Observation mode	POINTING	POINTING	On-chip summing requested	N	N
[deg] Pointing RA	83.817520	83.89143529156139	Subarray requested	NONE	NONE
[deg] Pointing Dec	-69.281330	-69.27380067975156	Alternating exposures requested	N	N
[deg] Pointing Roll	345.091814	345.3175720248271	[s] Primary exposure time	0.000000	3.1
[mm] SIM focus pos	-0.684267	-0.6828225247311905			
[mm] SIM defocus	0	0.001444936568705701			
[mm] SIM translation stage pos	-190.132523	-190.1400660498719			
[mm] SIM translation stage offset	0	0.00754346686406393			
[s] Observation start time (MET)	157692158.184000	157691107.73914			
Observation start date	2002-12-31T03:21:34	2002-12-31T03:05:07			
[s] Observation end time (MET)	157741658.184000	157742257.29128			
Observation end date	2002-12-31T17:06:34	2002-12-31T17:17:37			
Read mode	TIMED	TIMED			

## 2.3 Aspect



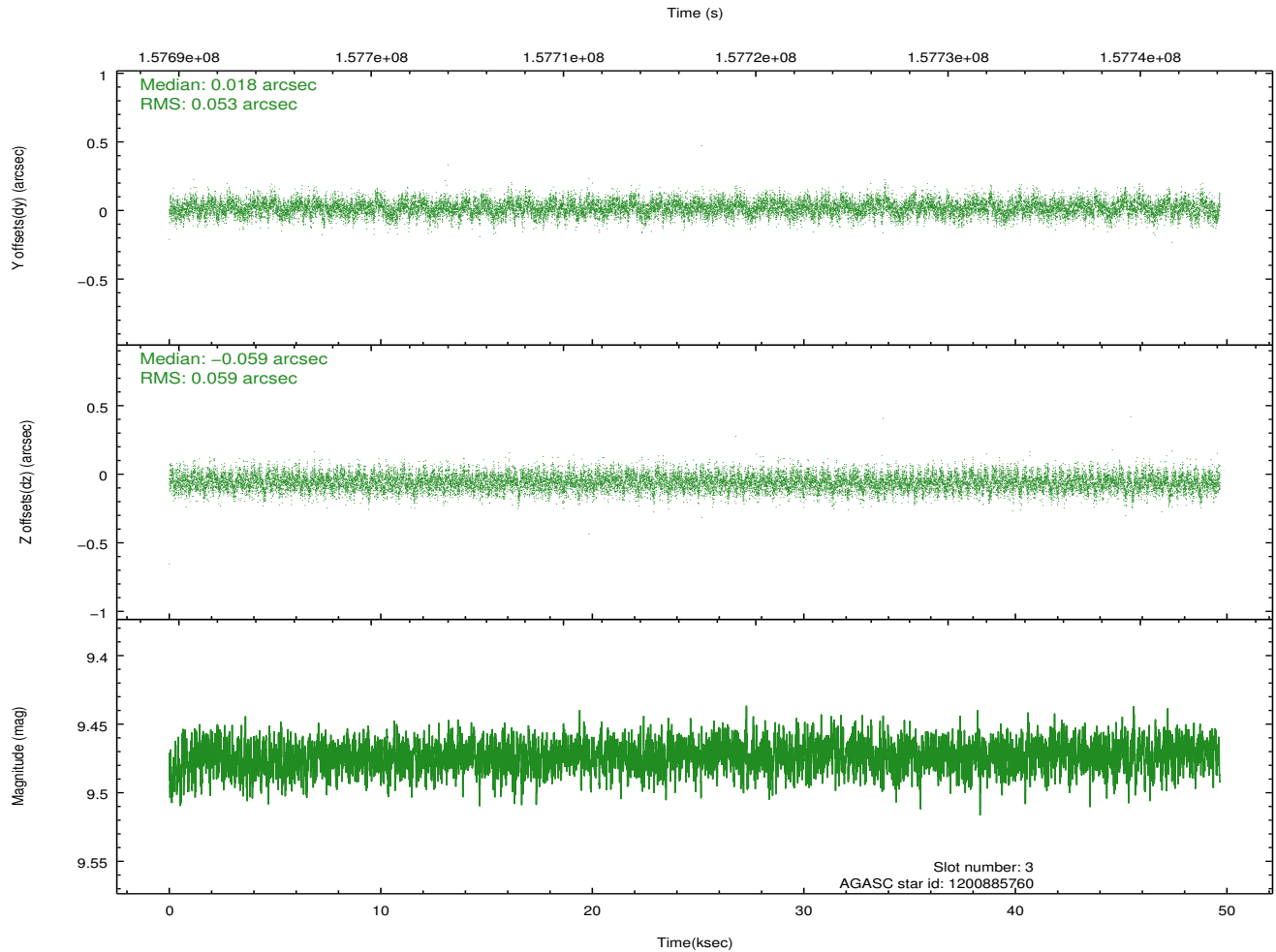
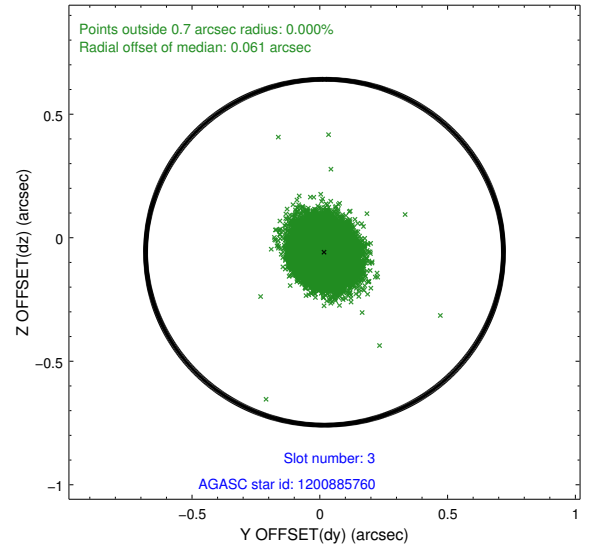
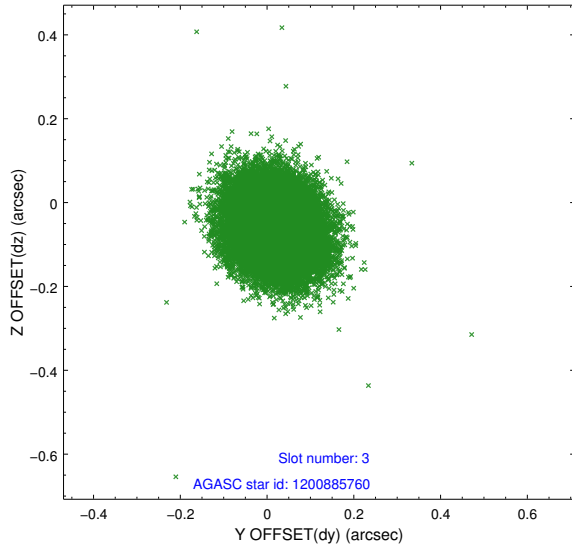


### Slot Statistics

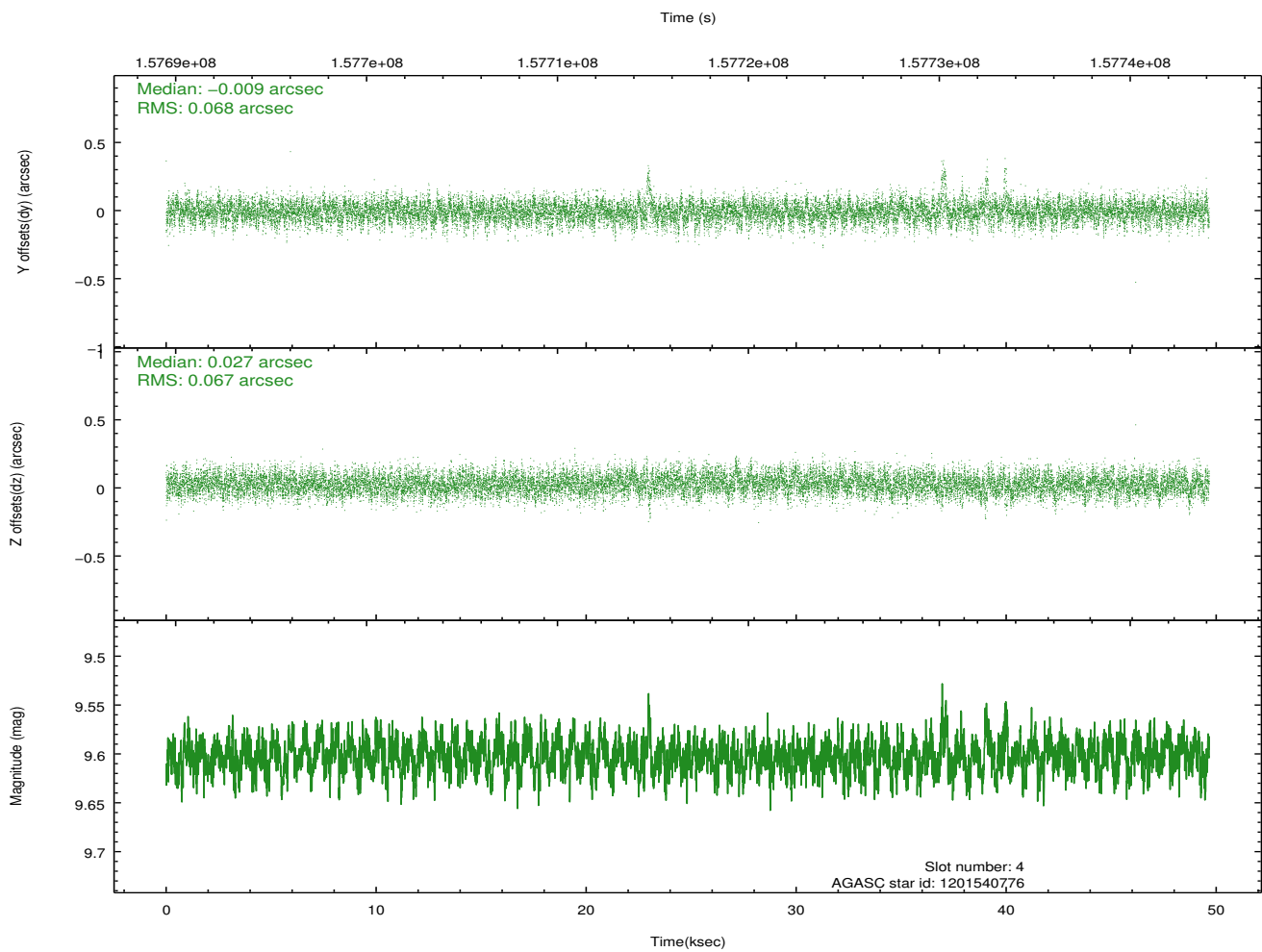
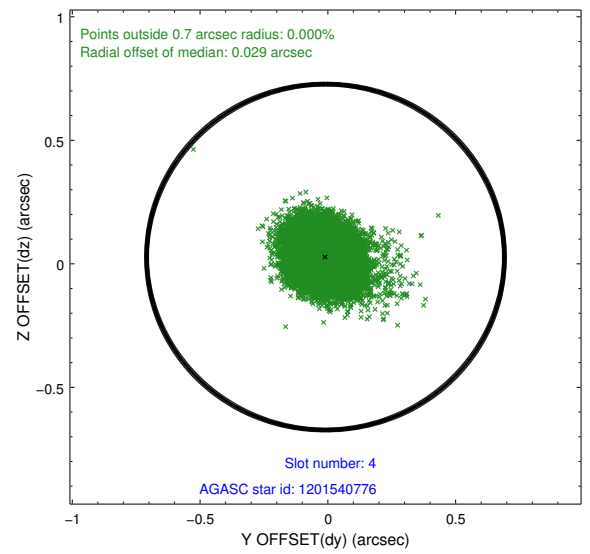
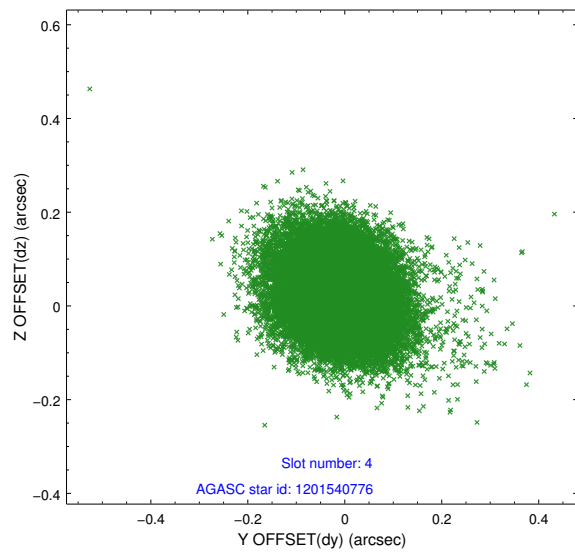
slot	status	id	mag	n_pts	med_dy	med_dz	dr1	dr2	ra	dec	mean_y	mean_z
0	FID	ACIS-S-2	7.11	12113	-0.022	-0.009	0.008	0.014	0.000000	0.000000	-755.18	-1729.51
1	FID	ACIS-S-4	7.20	12112	-0.007	0.013	0.011	0.018	0.000000	0.000000	2158.13	179.00
2	FID	ACIS-S-5	7.24	12113	-0.004	0.005	0.010	0.018	0.000000	0.000000	-1808.01	172.66
3	GUIDE	1200885760	9.47	24212	0.018	-0.059	0.084	0.137	83.723637	-68.777667	-584.64	1720.71
4	GUIDE	1201540776	9.60	24095	-0.009	0.027	0.099	0.164	85.107945	-69.858480	2085.20	-1611.84
5	GUIDE	1200884224	10.02	24200	0.033	-0.151	0.153	0.261	83.314443	-68.577335	-1290.57	2276.17
6	GUIDE	1201410616	9.35	24218	0.017	0.124	0.109	0.176	82.516808	-69.784406	-1092.56	-2182.67
7	GUIDE	1201542944	9.94	24197	-0.067	0.060	0.114	0.185	84.538615	-70.001893	1527.26	-2282.87

## 2.4 Star Slots

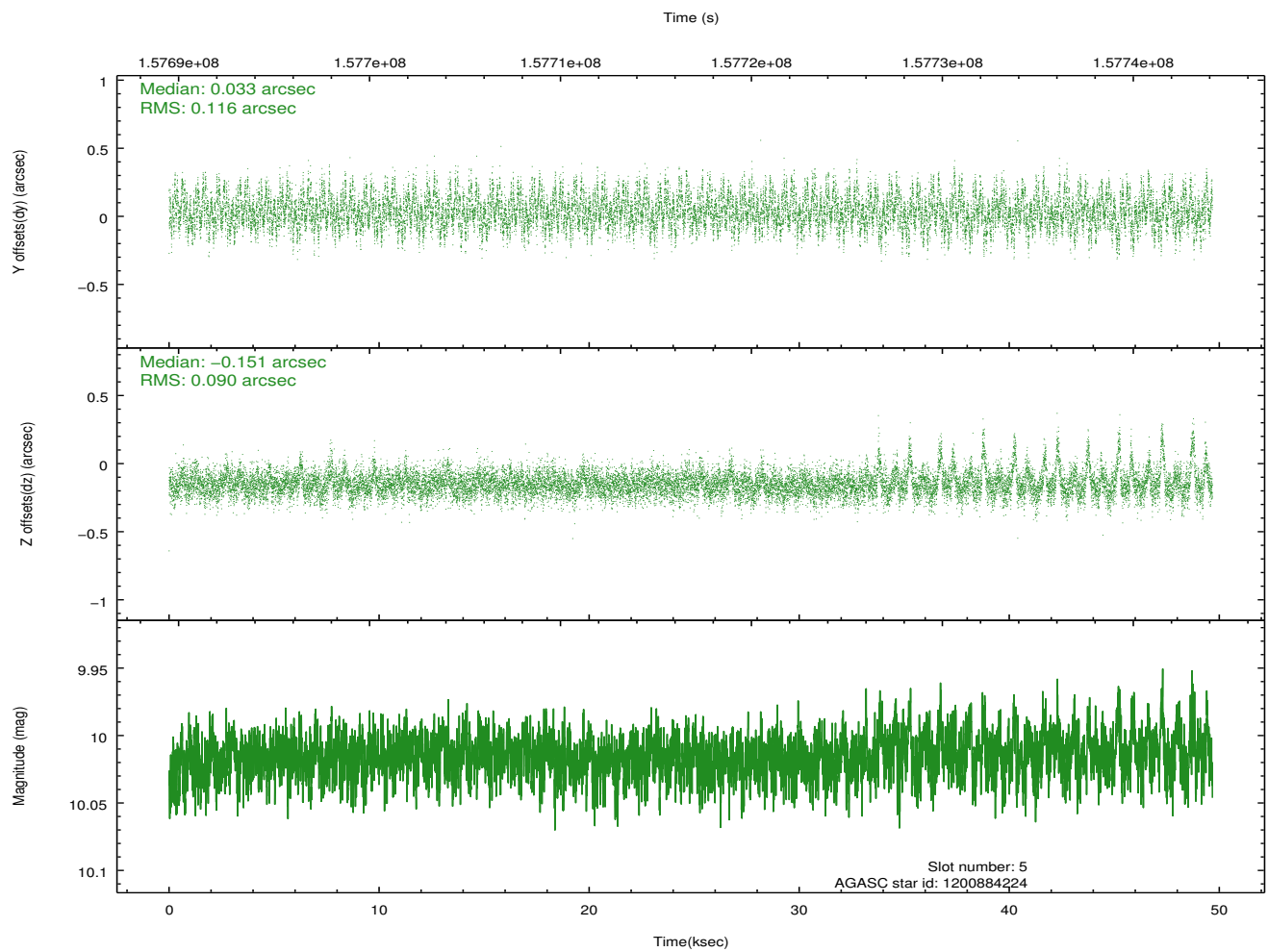
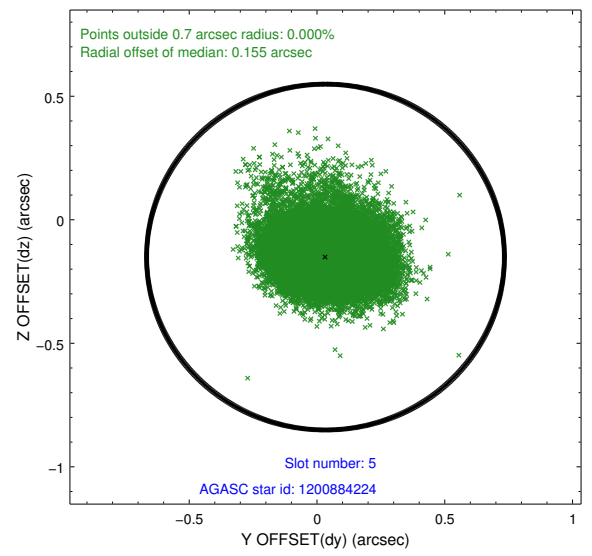
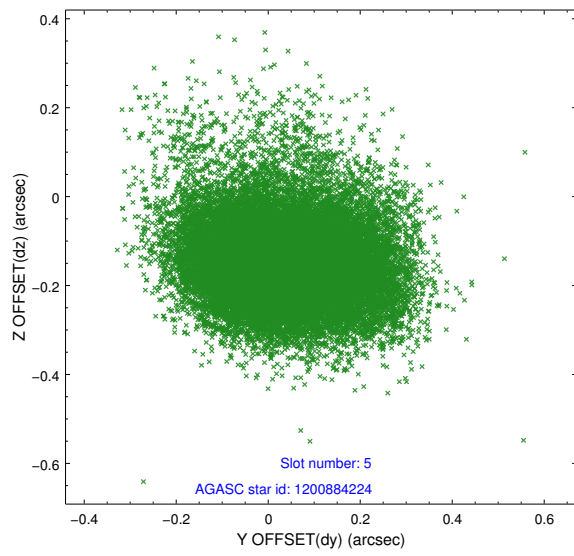
### 2.4.1 Slot 3



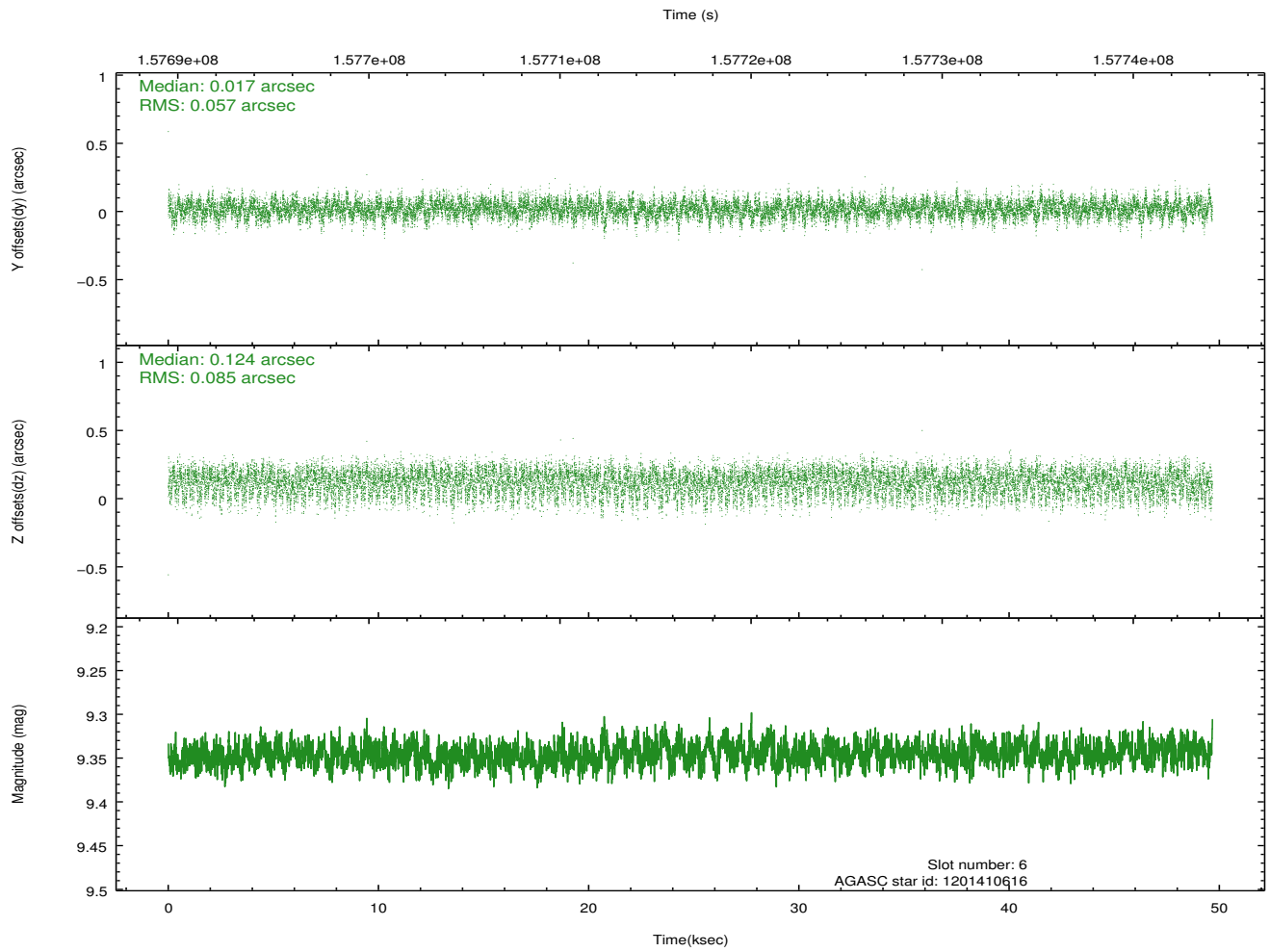
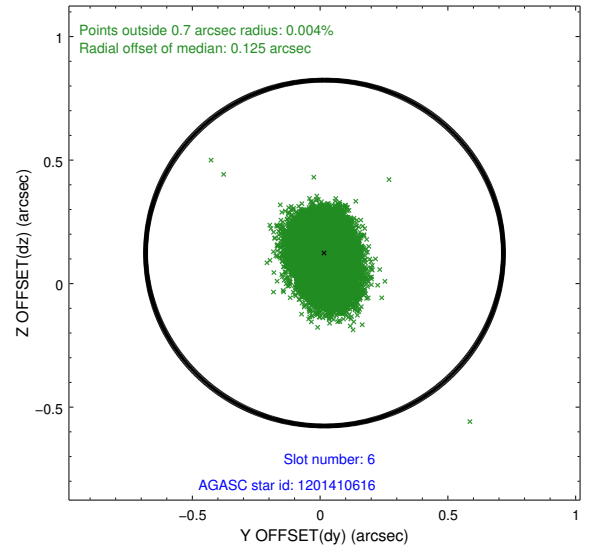
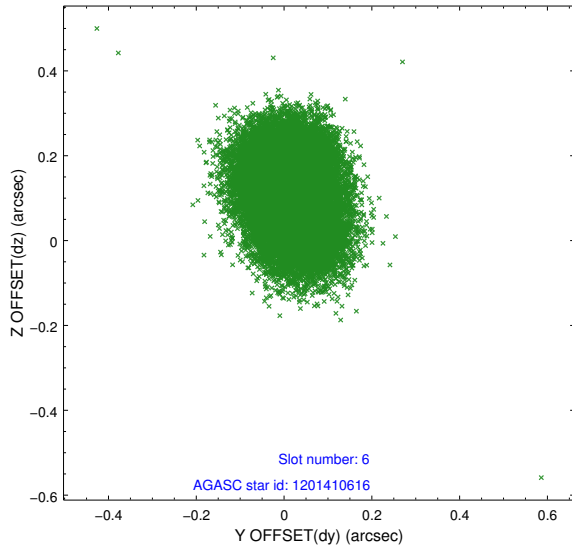
## 2.4.2 Slot 4



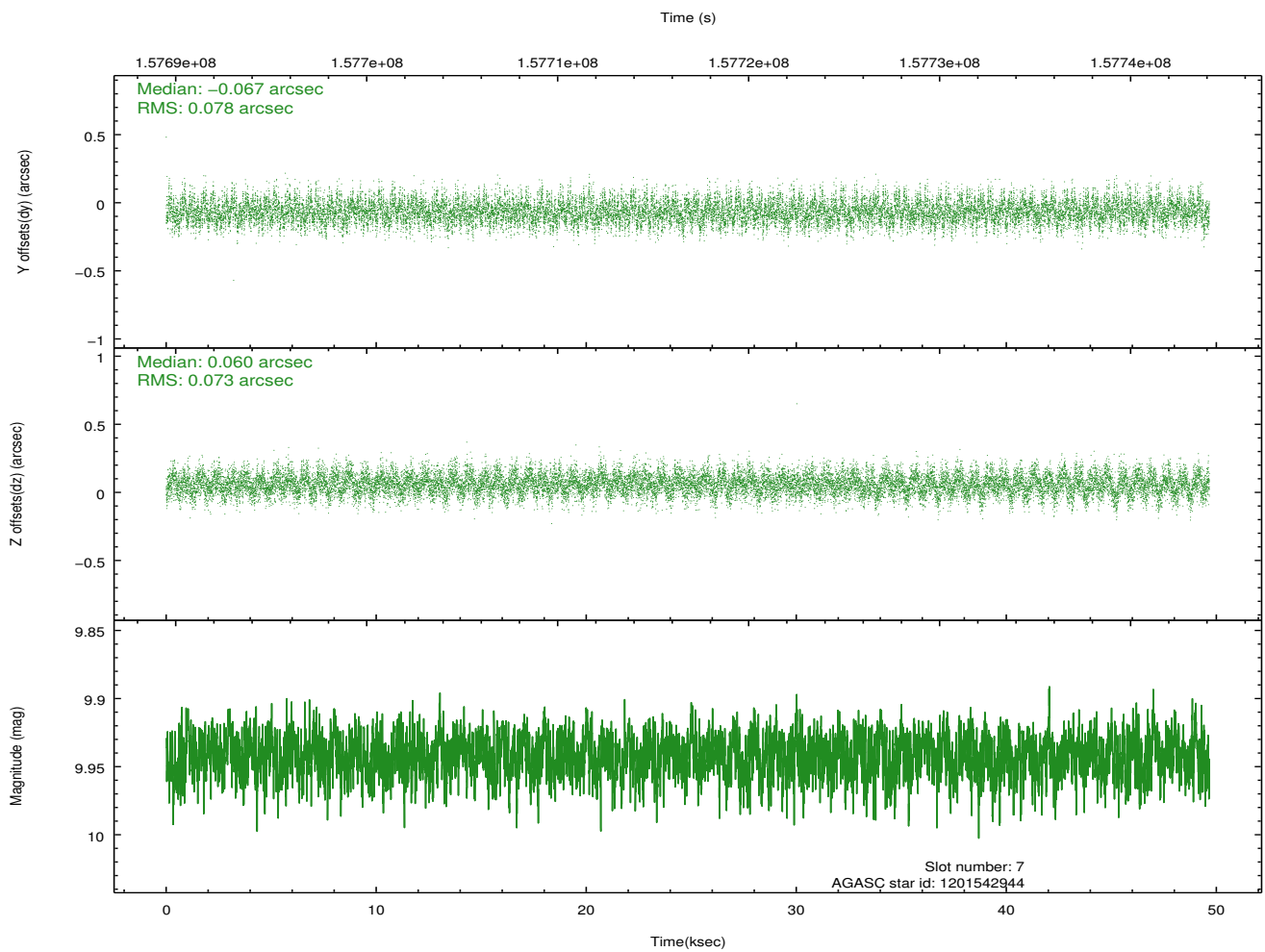
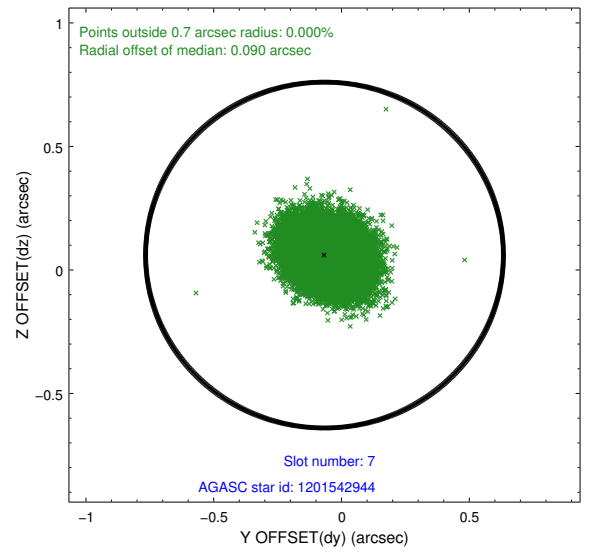
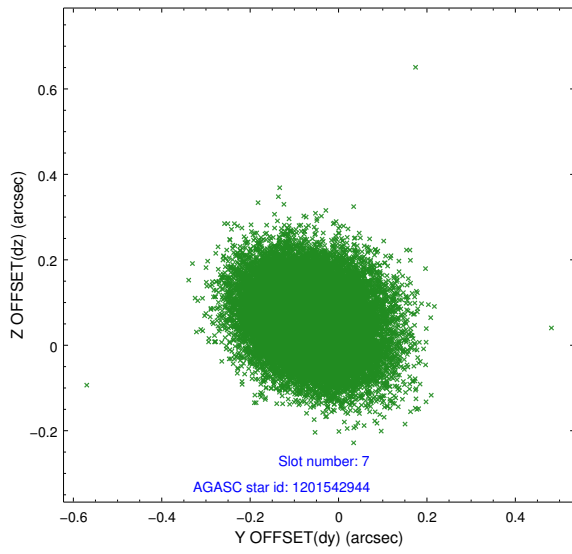
### 2.4.3 Slot 5



## 2.4.4 Slot 6

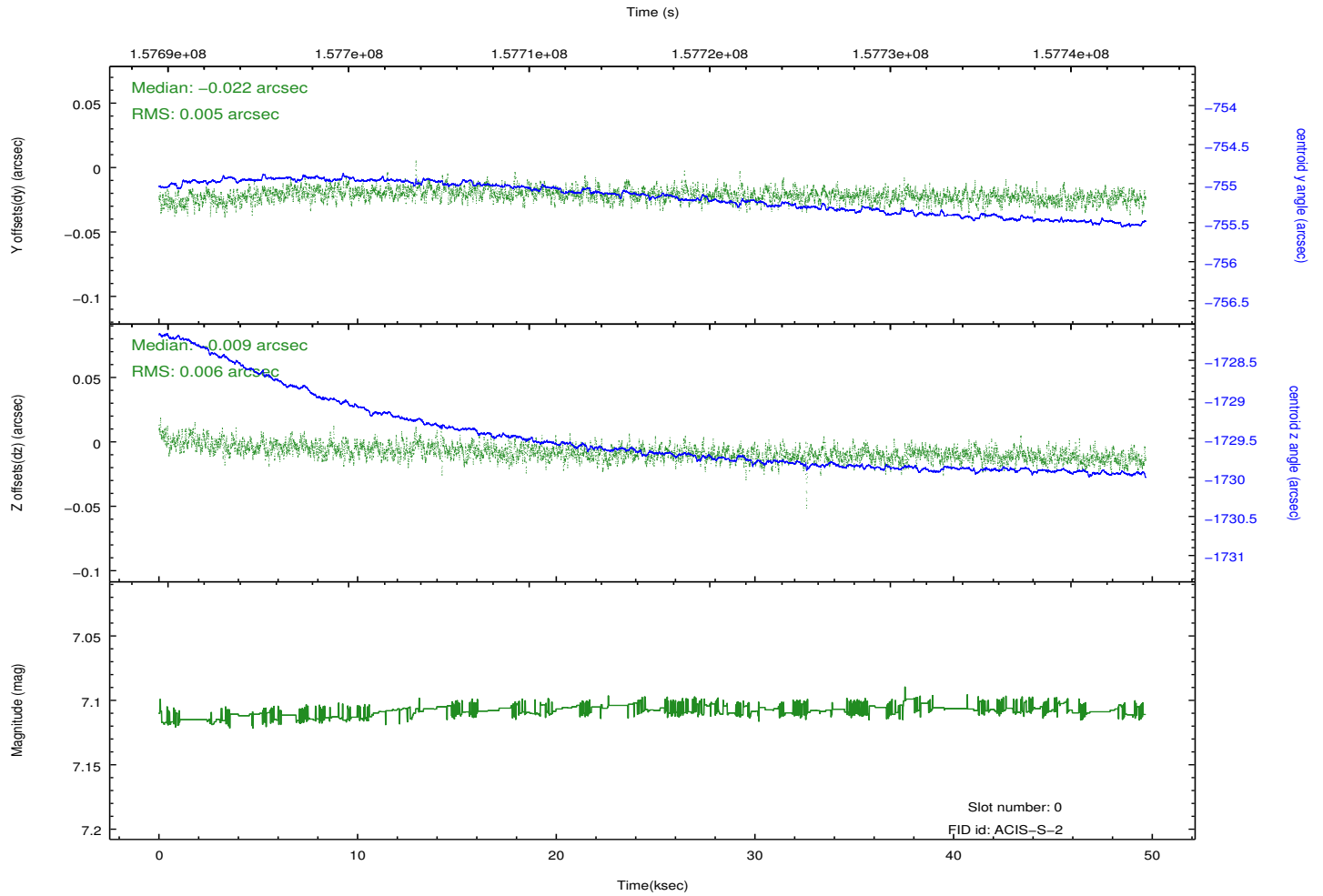
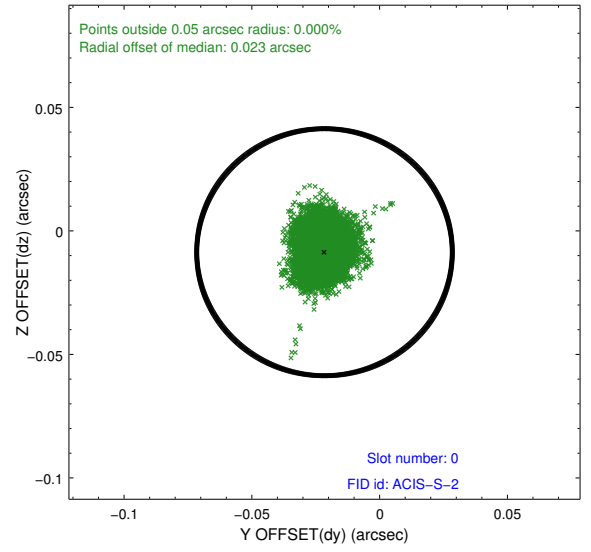
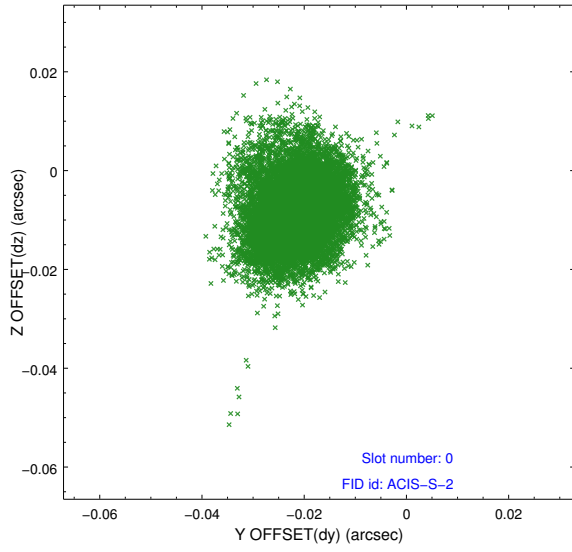


## 2.4.5 Slot 7

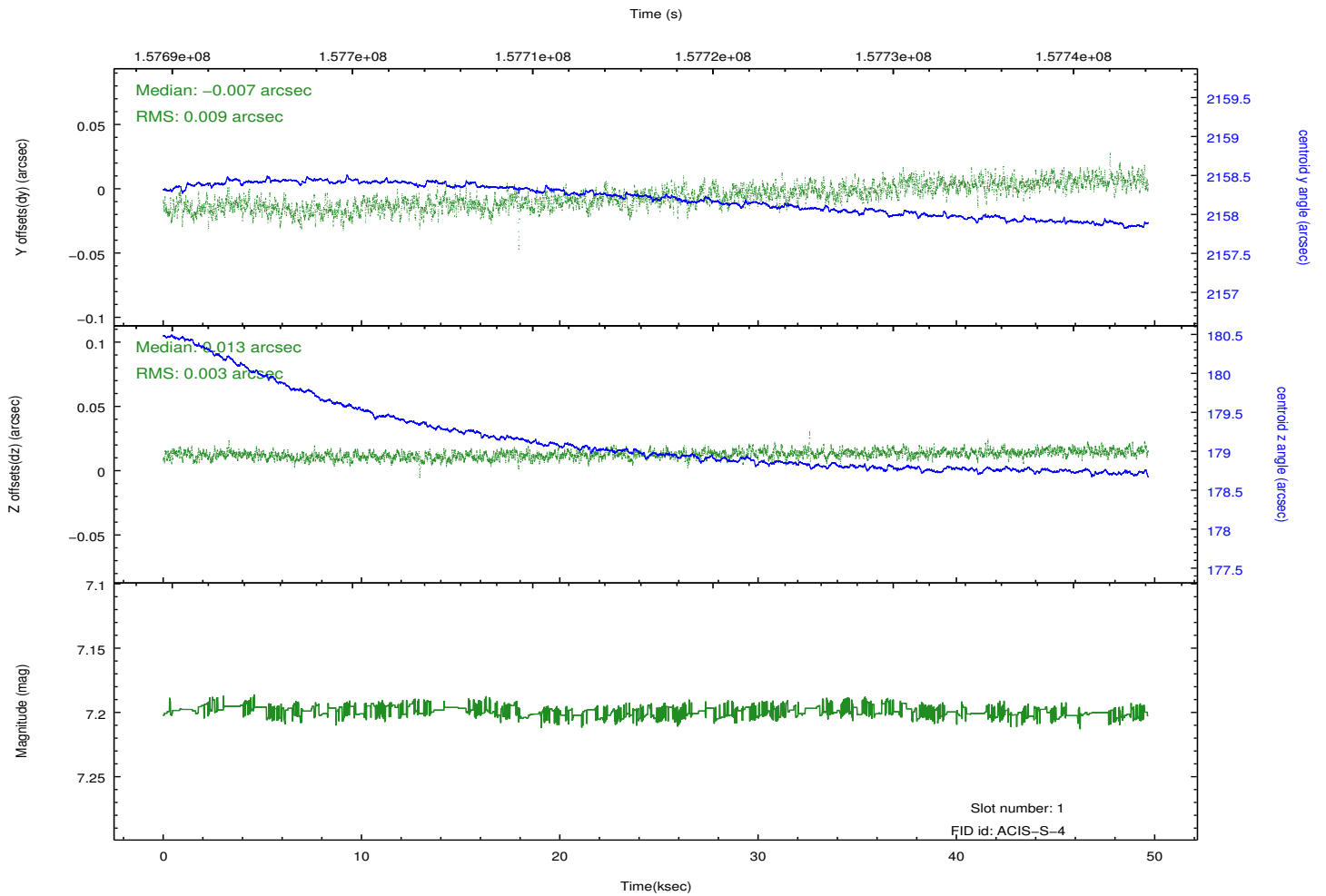
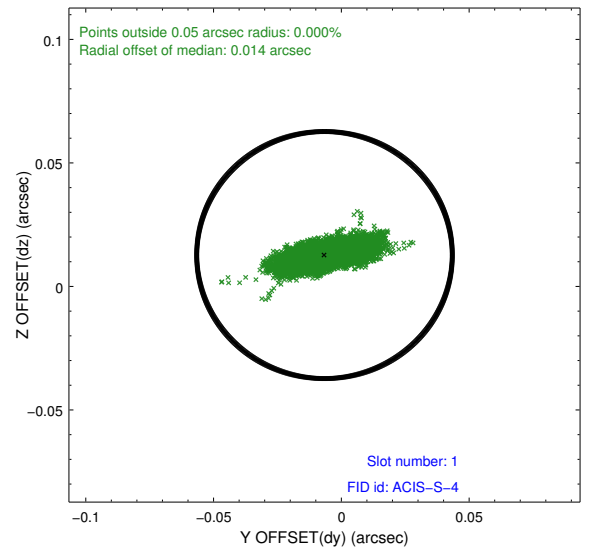
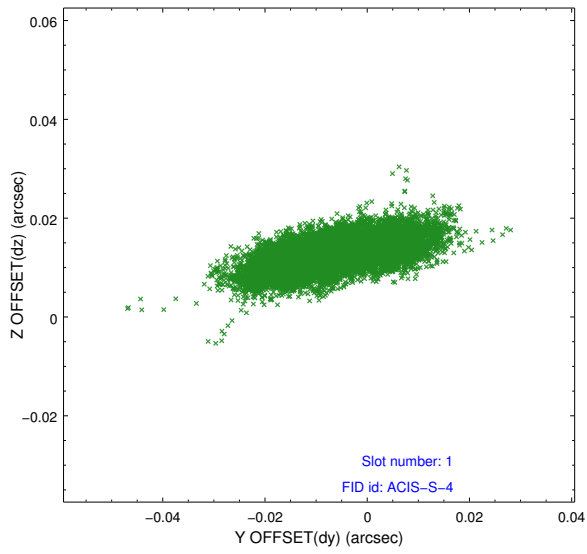


## 2.5 FID Slots

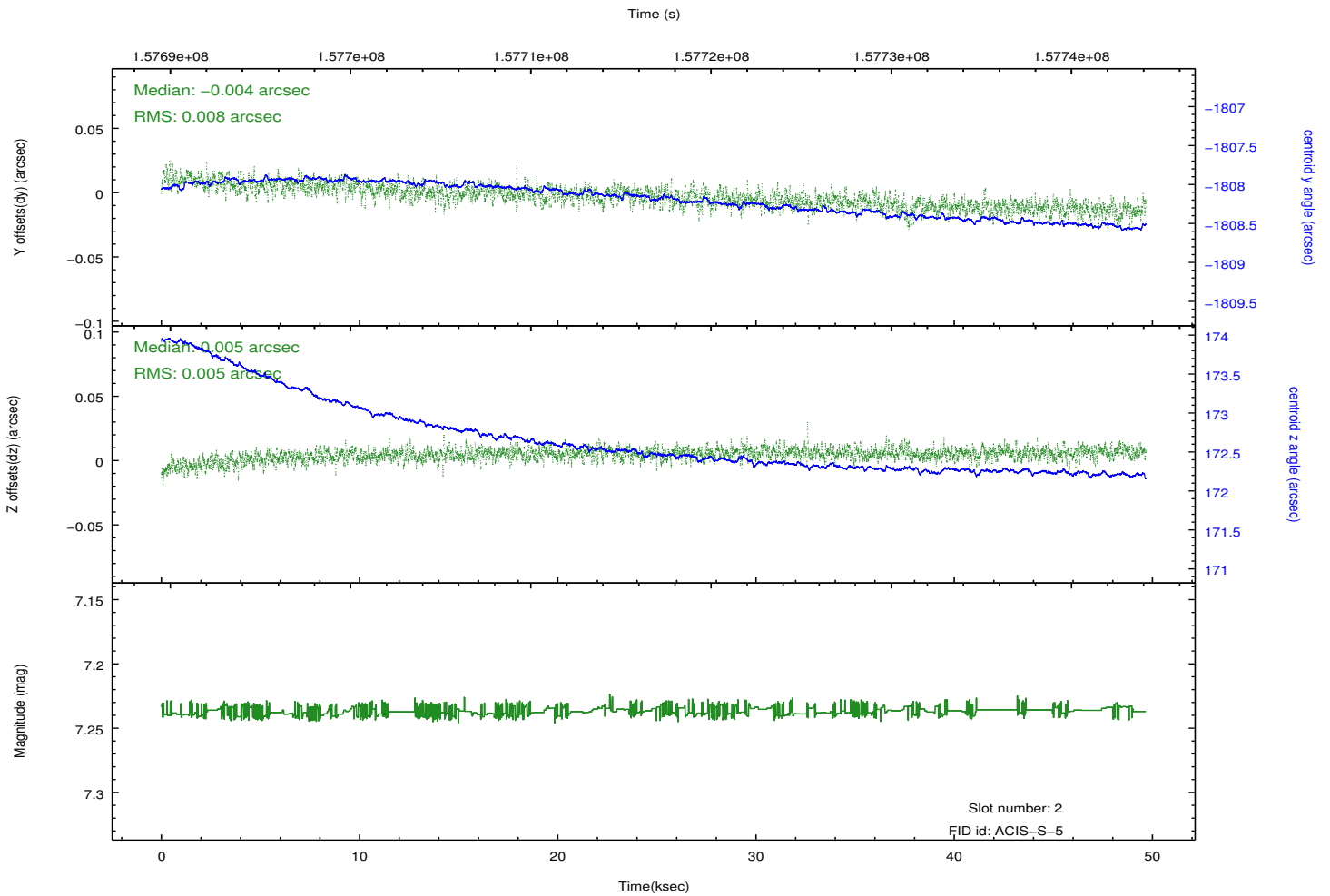
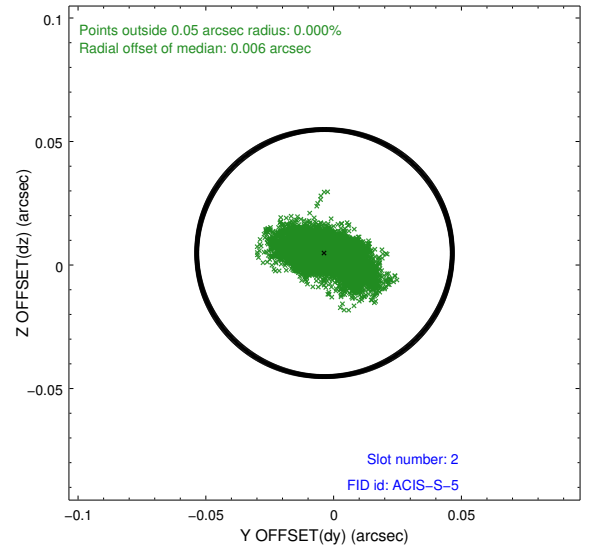
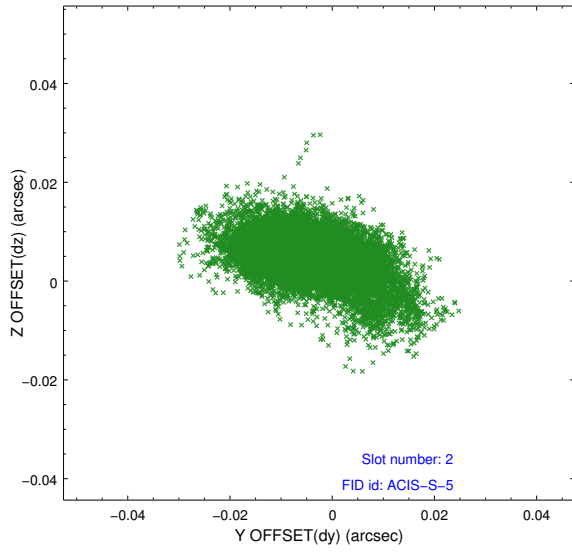
### 2.5.1 Slot 0



## 2.5.2 Slot 1



### 2.5.3 Slot 2



# A Summary

## A.1 Status

V&V Scientist	Jen Lauer
V&V Date (YYYY-MM-DD)	2012.12.14
V&V Edition	1
V&V Disposition and Status	OK
V&V Charge Time	49.658

## A.2 Comments

Monitor constraint met.