

V&V Reference Report

L2 ASCDS Version : 8.4.5

Observation 3909 - L2 Version 3
Chandra X-Ray Center

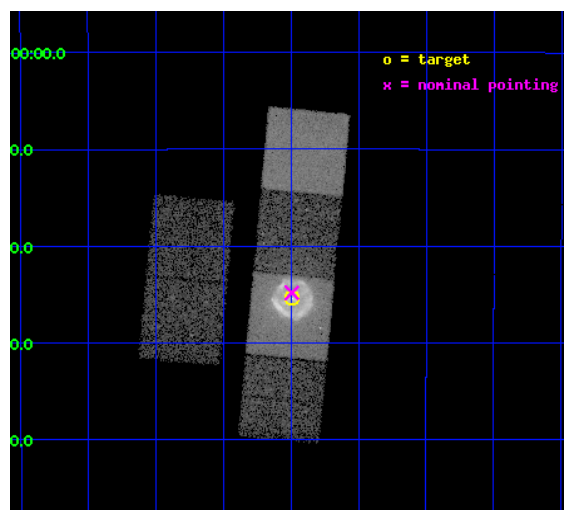
L2 Processing Date : Oct 27 2012

Contents

1	Front	2
2	OBI	3
2.1	OBI	3
2.1.1	Images	3
2.1.2	Bias	3
2.1.3	Parameters	4
2.1.4	Events	4
2.2	Compared Parameters	5
2.3	Aspect	6
2.4	Star Slots	9
2.4.1	Slot 3	9
2.4.2	Slot 4	10
2.4.3	Slot 5	11
2.4.4	Slot 6	12
2.4.5	Slot 7	13
2.5	FID Slots	14
2.5.1	Slot 0	14
2.5.2	Slot 1	15
2.5.3	Slot 2	16
A	Summary	17
A.1	Status	17
A.2	Comments	17

1 Front

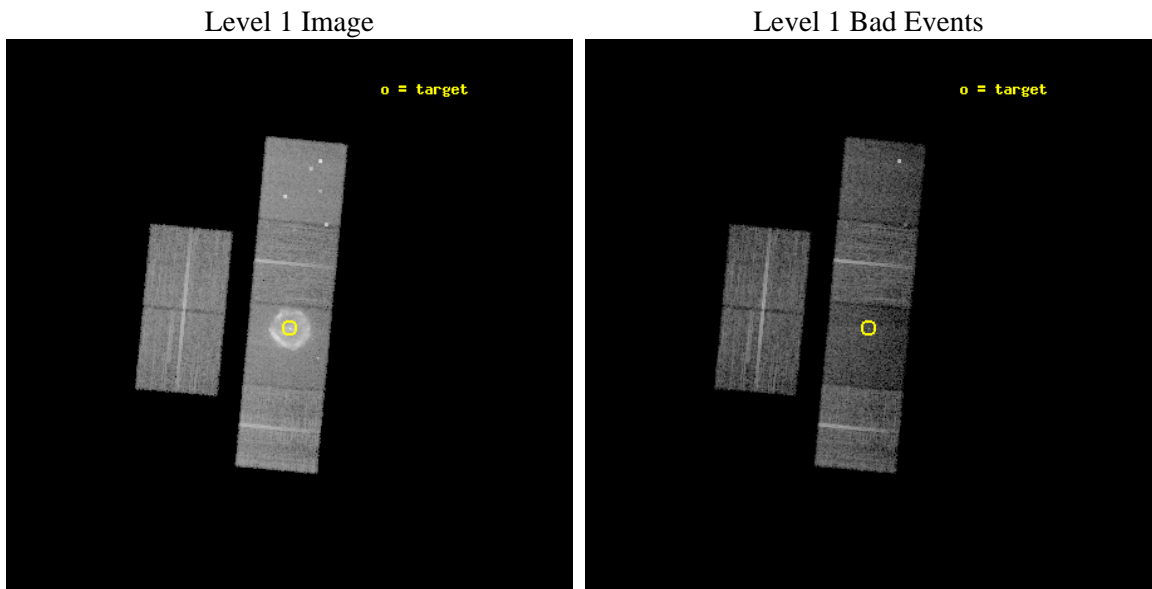
seq_num	500388	Sequence number
obs_id	3909	Observation id
title	THE DYNAMICS OF THE PULSAR WIND NEBULA IN G11.2-0.3	Proposal title
observer	Dr. Mallory Roberts	Principal investigator
object	G11.2-0.3	Source name
dtcycle	0	
cycle	P	events from which exps? Prim/Second/Both
ra_targ	272.8725	Observer's specified target RA [deg]
dec_targ	-19.423611	Observer's specified target Dec [deg]
ra_nom	272.8733024845	Nominal RA [deg]
dec_nom	-19.413988962383	Nominal Dec [deg]
roll_nom	95.387690928678	Nominal Roll [deg]
revision	3	Processing version of data
ontime	13961.599947989	Sum of GTIs [s]
livetime	13784.809762781	Livetime [s]
ontime2	13961.599947989	Sum of GTIs [s]
ontime3	13961.599947989	Sum of GTIs [s]
ontime5	13961.599947989	Sum of GTIs [s]
ontime6	13961.599947989	Sum of GTIs [s]
ontime7	13961.599947989	Sum of GTIs [s]
ontime8	13961.599947989	Sum of GTIs [s]
l2events	173938	Number of level 2 events



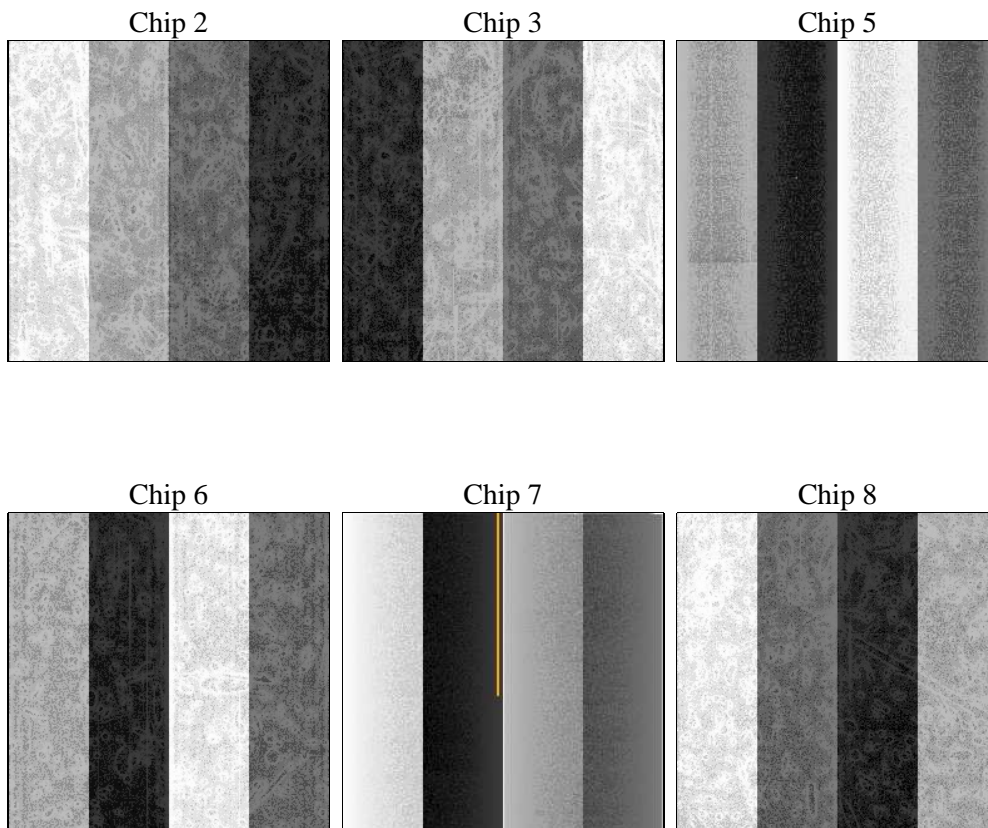
2 OBI

2.1 OBI

2.1.1 Images



2.1.2 Bias



2.1.3 Parameters

obi_num	1	Obi number	sched_exp_time	14000.000000	[s] Scheduled observation exposure time
ascdsver	8.4.5	Processing system revision	ontime	13961.599947989	Sum of GTIs [s]
caldbver	4.5.2	 	ontime2	13961.599947989	Sum of GTIs [s]
date	2012-10-27T17:28:54	Date and time of file creation	ontime3	13961.599947989	Sum of GTIs [s]
revision	3	Processing version of data	ontime5	13961.599947989	Sum of GTIs [s]
			ontime6	13961.599947989	Sum of GTIs [s]
			ontime7	13961.599947989	Sum of GTIs [s]
			ontime8	13961.599947989	Sum of GTIs [s]
			l1events	507133	Number of level 1 events

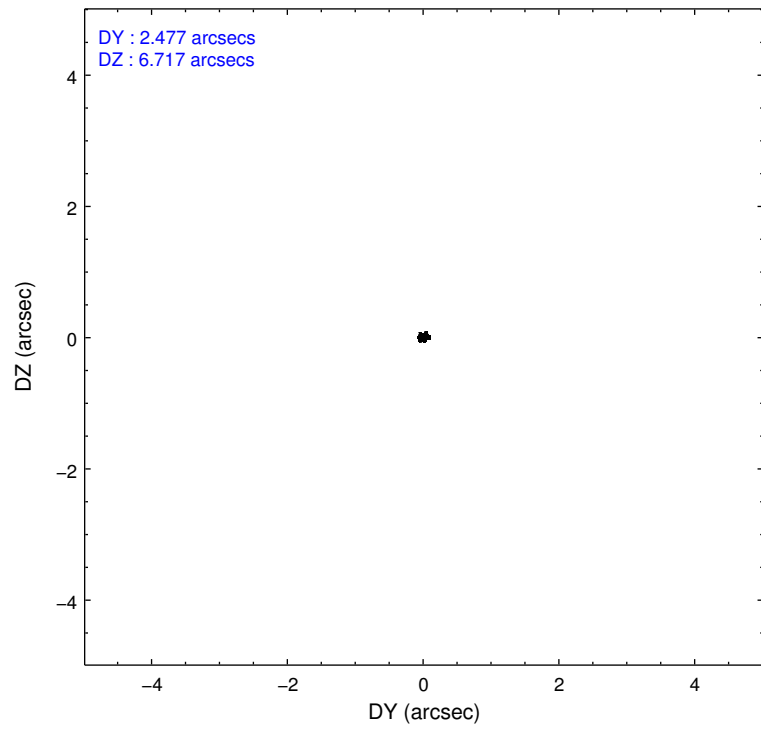
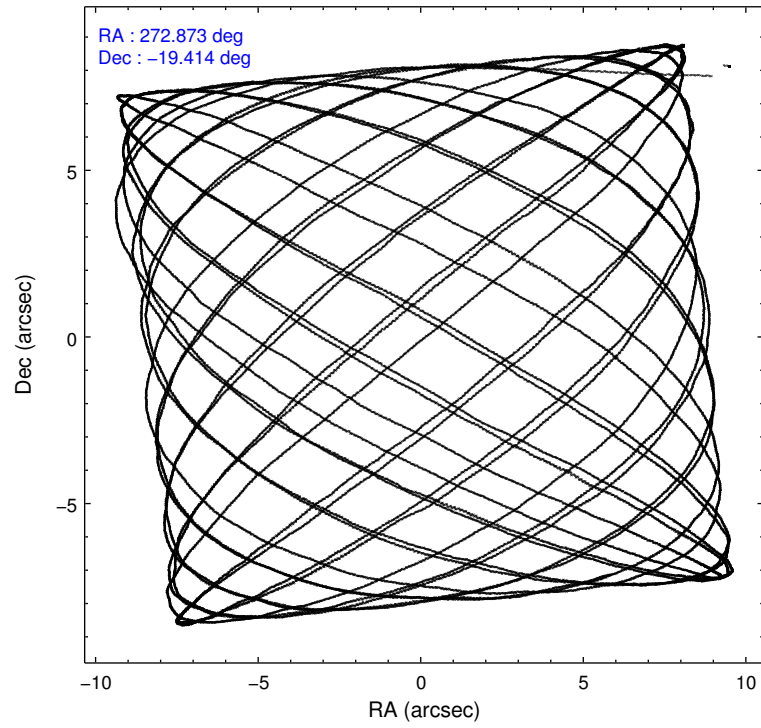
2.1.4 Events

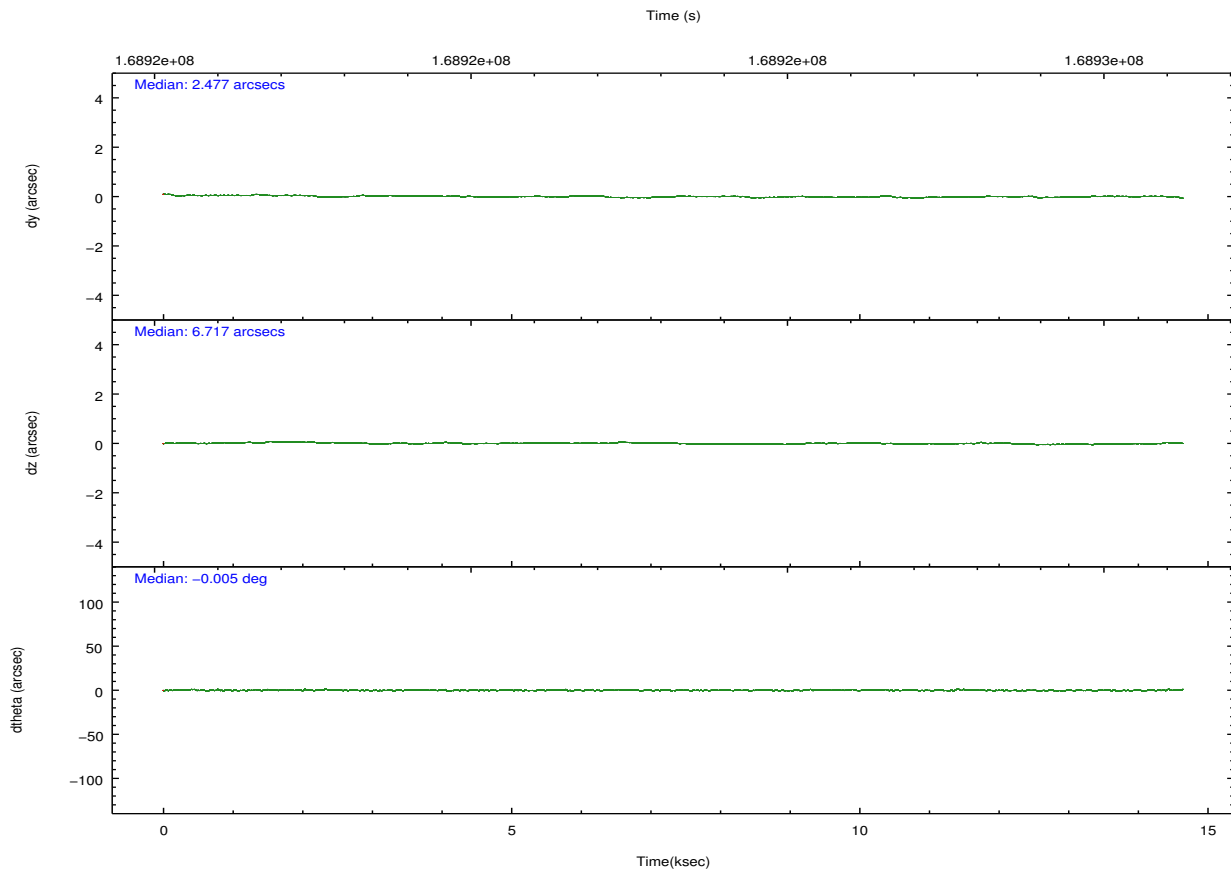
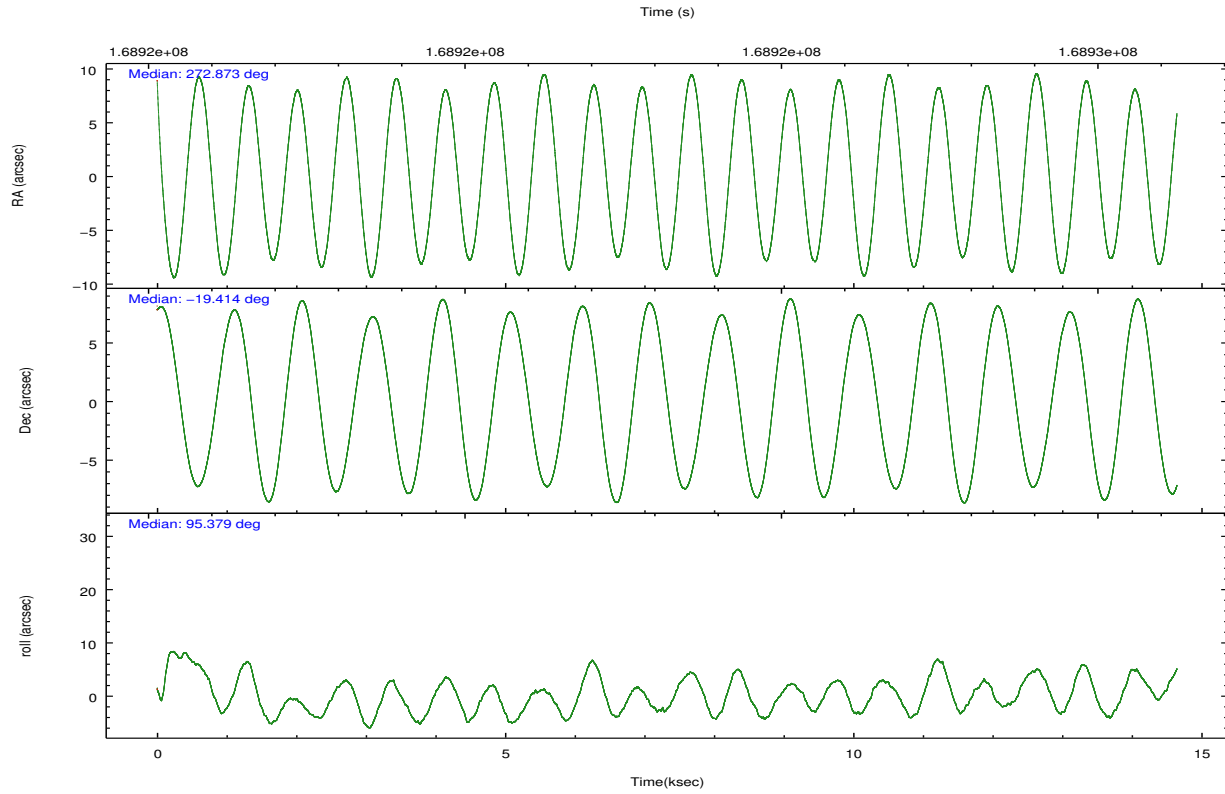
	ccd 2	ccd 3	ccd 5	ccd 6	ccd 7	ccd 8		ccd 2	ccd 3	ccd 5	ccd 6	ccd 7	ccd 8
level 1 events	67773	64515	85119	69414	138077	82235	grade 0 events	3330	3117	7190	5582	22324	5943
rejected events	60317	57457	38537	58986	31381	62958		4%	4%	8%	8%	16%	7%
rejected %	88%	89%	45%	84%	22%	76%	grade 1 events	41	34	112	47	78	59
								0%	0%	0%	0%	0%	0%
							grade 2 events	1617	1343	14395	1793	27033	4228
								2%	2%	16%	2%	19%	5%
							grade 3 events	711	791	2216	860	12283	1997
								1%	1%	2%	1%	8%	2%
							grade 4 events	719	730	2032	788	11824	1936
								1%	1%	2%	1%	8%	2%
							grade 5 events	1782	2076	6914	2158	7178	3271
								2%	3%	8%	3%	5%	3%
							grade 6 events	1082	1080	20764	1407	33256	5175
								1%	1%	24%	2%	24%	6%
							grade 7 events	58491	55344	31496	56779	24101	59626
								86%	85%	37%	81%	17%	72%

2.2 Compared Parameters

Parameter	Planned	Actual	Parameter	Planned	Actual
Instrument	ACIS	ACIS	Obspar format version number	7	7
Detector	ACIS-235678	ACIS-235678	Obspar file type	PREDICTED	ACTUAL
Grating	NONE	NONE	Obspar update status	NONE	UPDATED
Data mode	VFAINT	VFAINT	Number of optional ACIS chips dropped	0	0
Observation mode	POINTING	POINTING	On-chip summing requested	N	N
[deg] Pointing RA	272.890378	272.873302484503	Subarray requested	NONE	NONE
[deg] Pointing Dec	-19.435959	-19.41398896238309	Alternating exposures requested	N	N
[deg] Pointing Roll	95.236740	95.38769092867778	[s] Primary exposure time	0.000000	3.2
[mm] SIM focus pos	-0.684267	-0.6828225247311905			
[mm] SIM defocus	0	0.001444936568705701			
[mm] SIM translation stage pos	-190.132523	-190.1400660498719			
[mm] SIM translation stage offset	0	0.00754346686406393			
[s] Observation start time (MET)	168916512.184000	168915324.58637			
Observation start date	2003-05-10T01:14:08	2003-05-10T00:55:24			
[s] Observation end time (MET)	168930512.184000	168931092.67453			
Observation end date	2003-05-10T05:07:28	2003-05-10T05:18:12			
Read mode	TIMED	TIMED			

2.3 Aspect



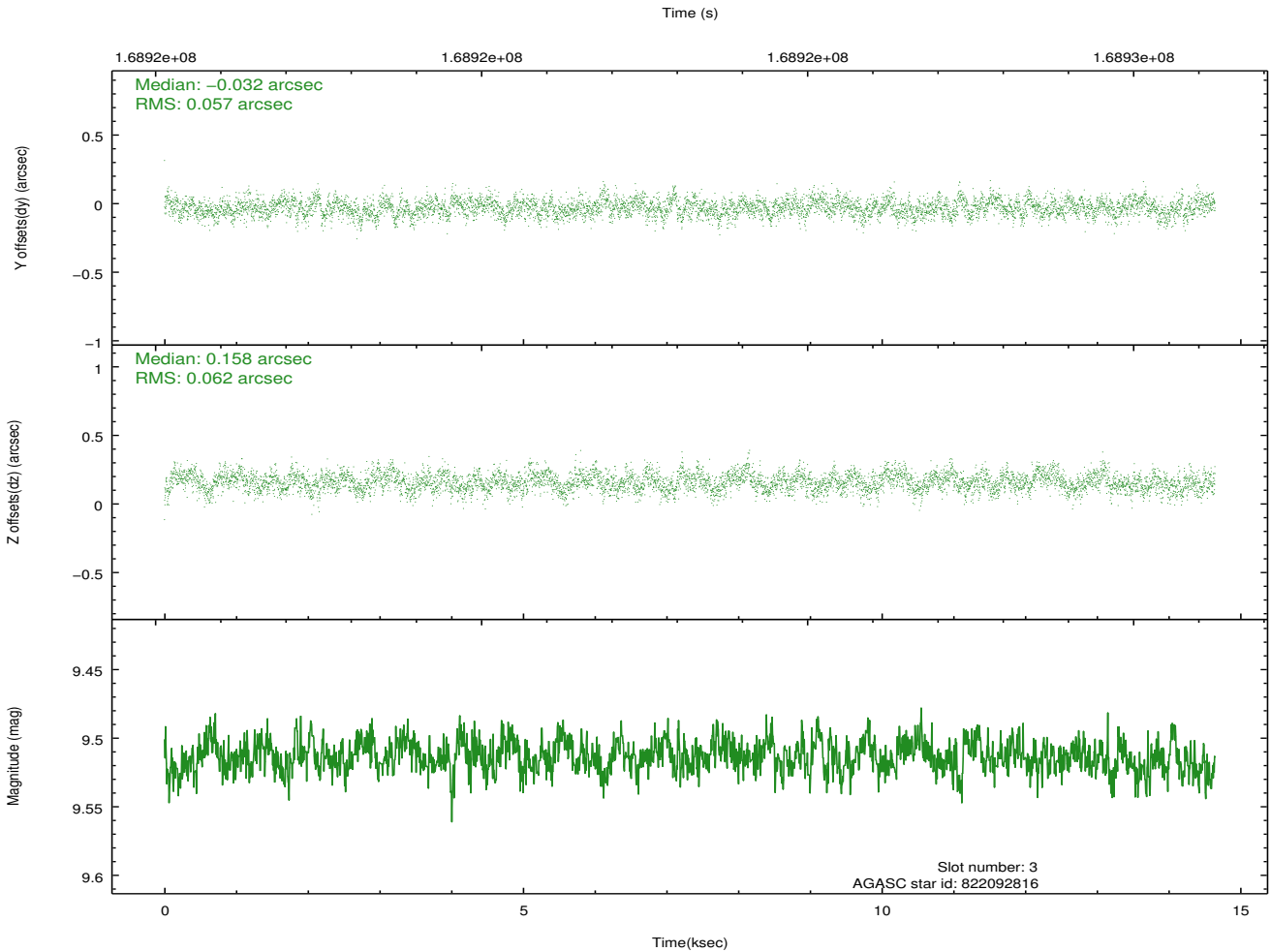
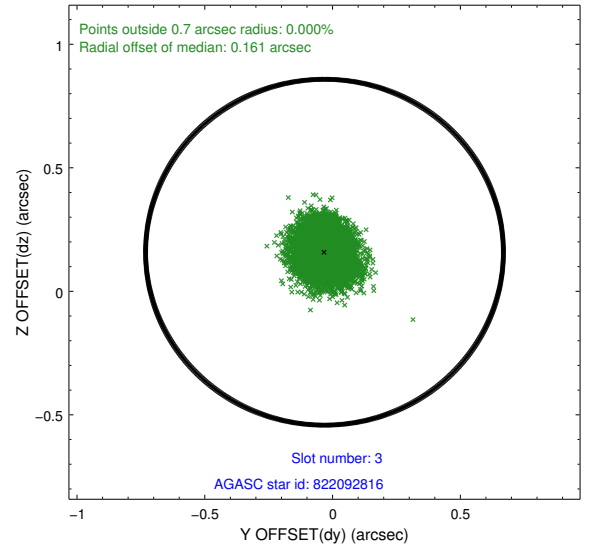
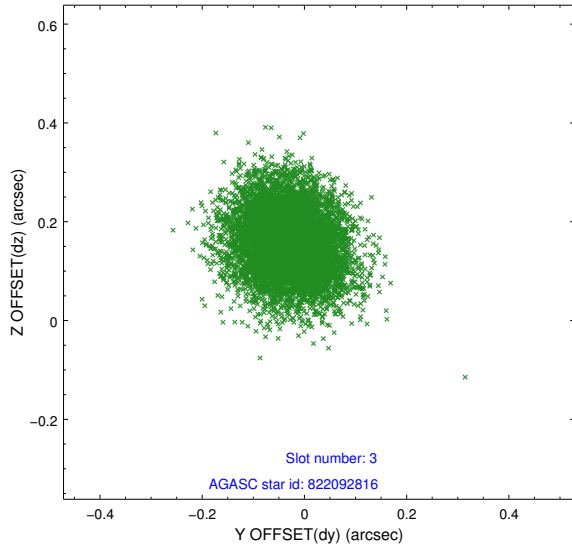


Slot Statistics

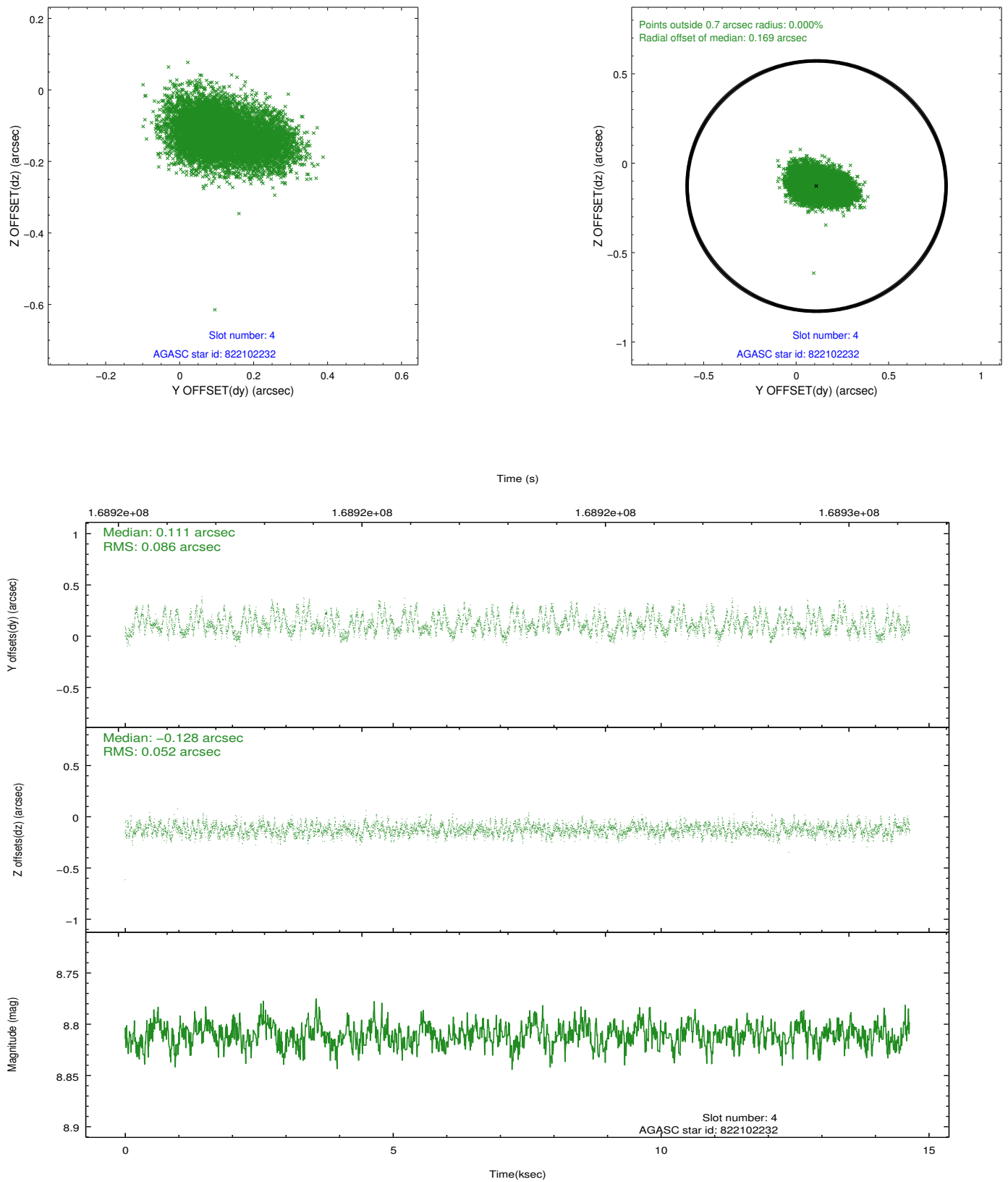
slot	status	id	mag	n_pts	med_dy	med_dz	dr1	dr2	ra	dec	mean_y	mean_z
0	FID	ACIS-S-2	7.11	3573	-0.046	-0.010	0.007	0.012	0.000000	0.000000	-755.13	-1727.89
1	FID	ACIS-S-4	7.20	3573	0.014	0.025	0.006	0.011	0.000000	0.000000	2158.04	180.34
2	FID	ACIS-S-5	7.24	3572	0.000	-0.006	0.007	0.011	0.000000	0.000000	-1807.55	174.28
3	GUIDE	822092816	9.51	7136	-0.032	0.158	0.090	0.147	273.207975	-19.445846	-134.51	-1070.09
4	GUIDE	822102232	8.81	7145	0.111	-0.128	0.106	0.175	272.350923	-20.034935	-1983.71	2013.56
5	GUIDE	822102528	9.30	7140	0.107	-0.057	0.099	0.159	272.446853	-20.048949	-2062.86	1695.33
6	GUIDE	822102608	9.30	7144	-0.122	-0.052	0.079	0.129	272.659367	-19.166896	1035.45	694.31
7	GUIDE	822085152	9.00	7138	-0.074	0.079	0.065	0.107	272.974056	-19.057083	1332.53	-407.60

2.4 Star Slots

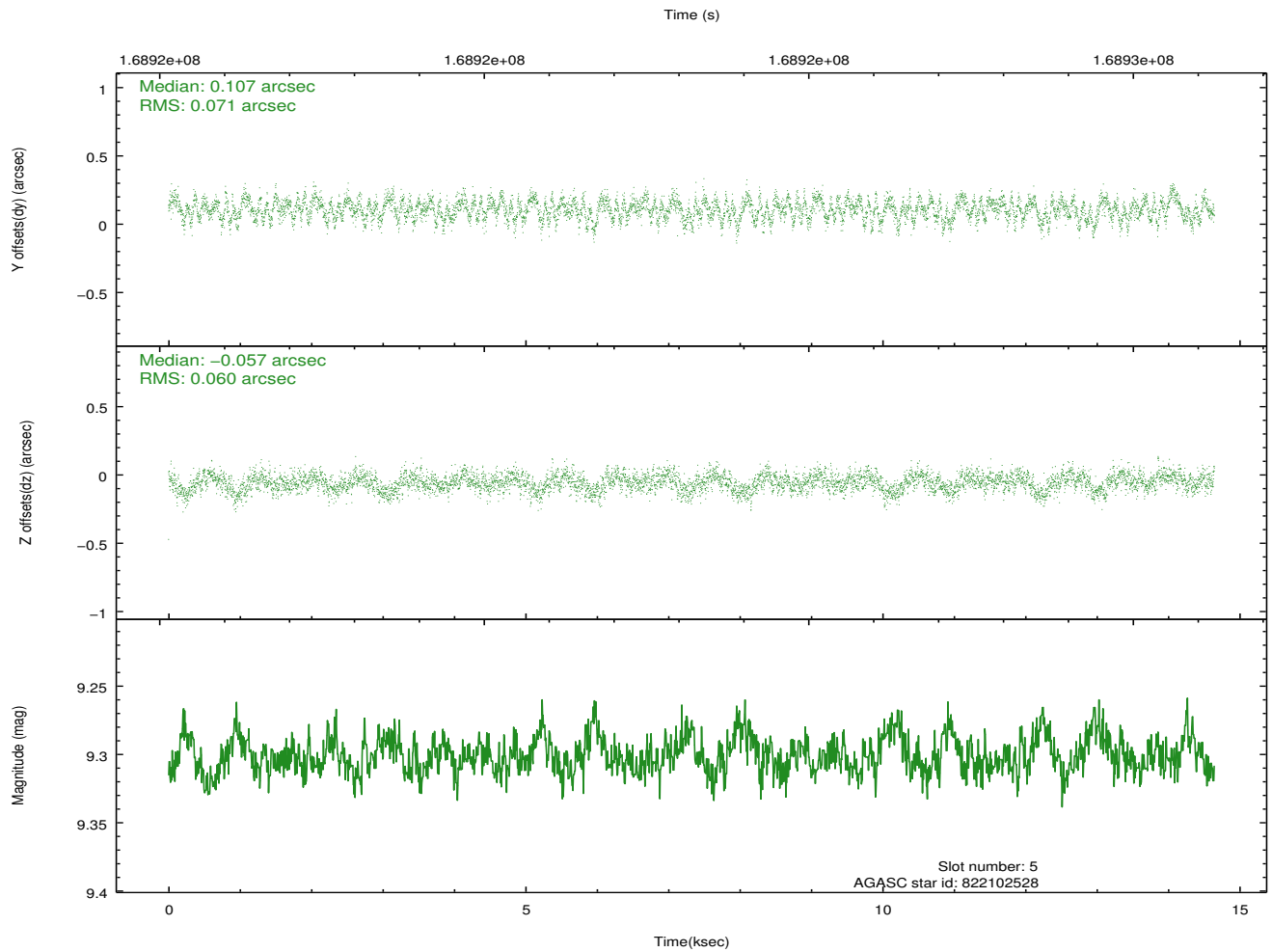
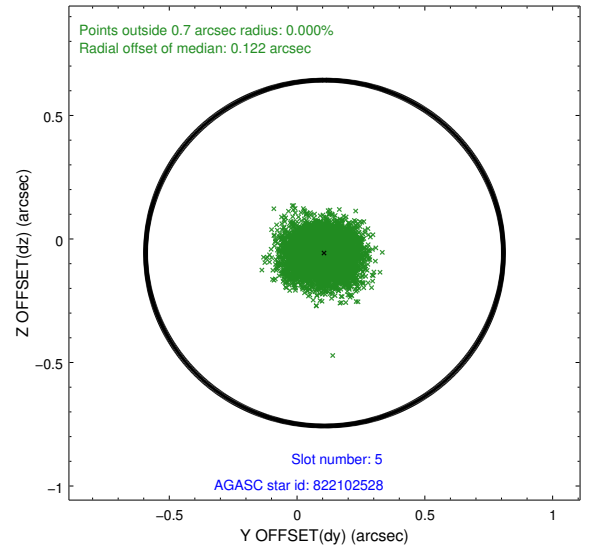
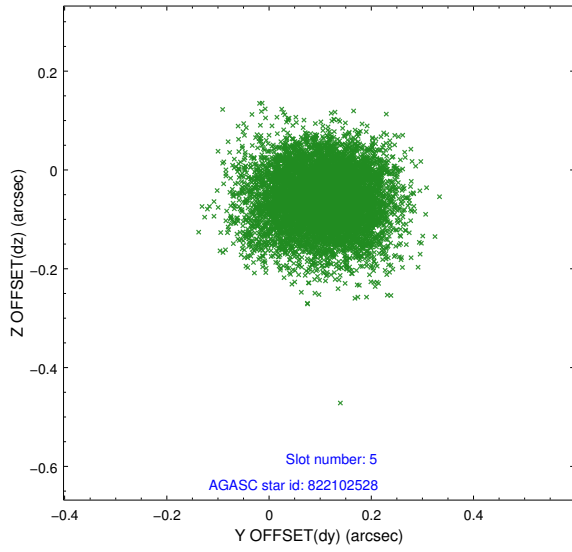
2.4.1 Slot 3



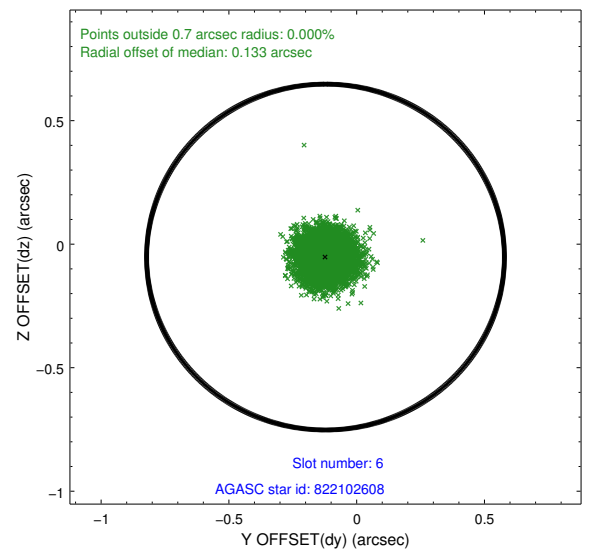
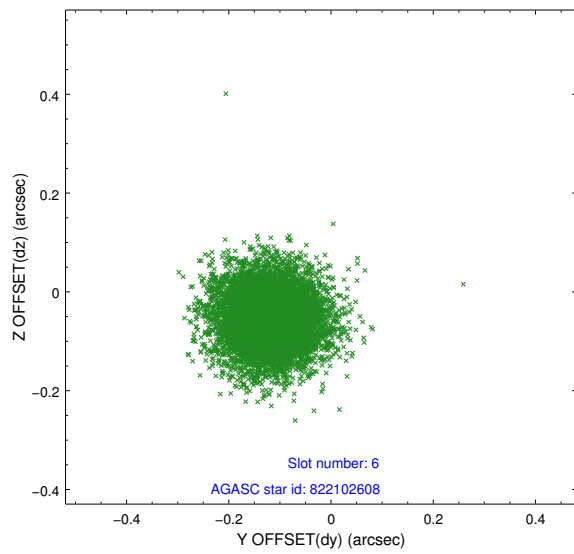
2.4.2 Slot 4



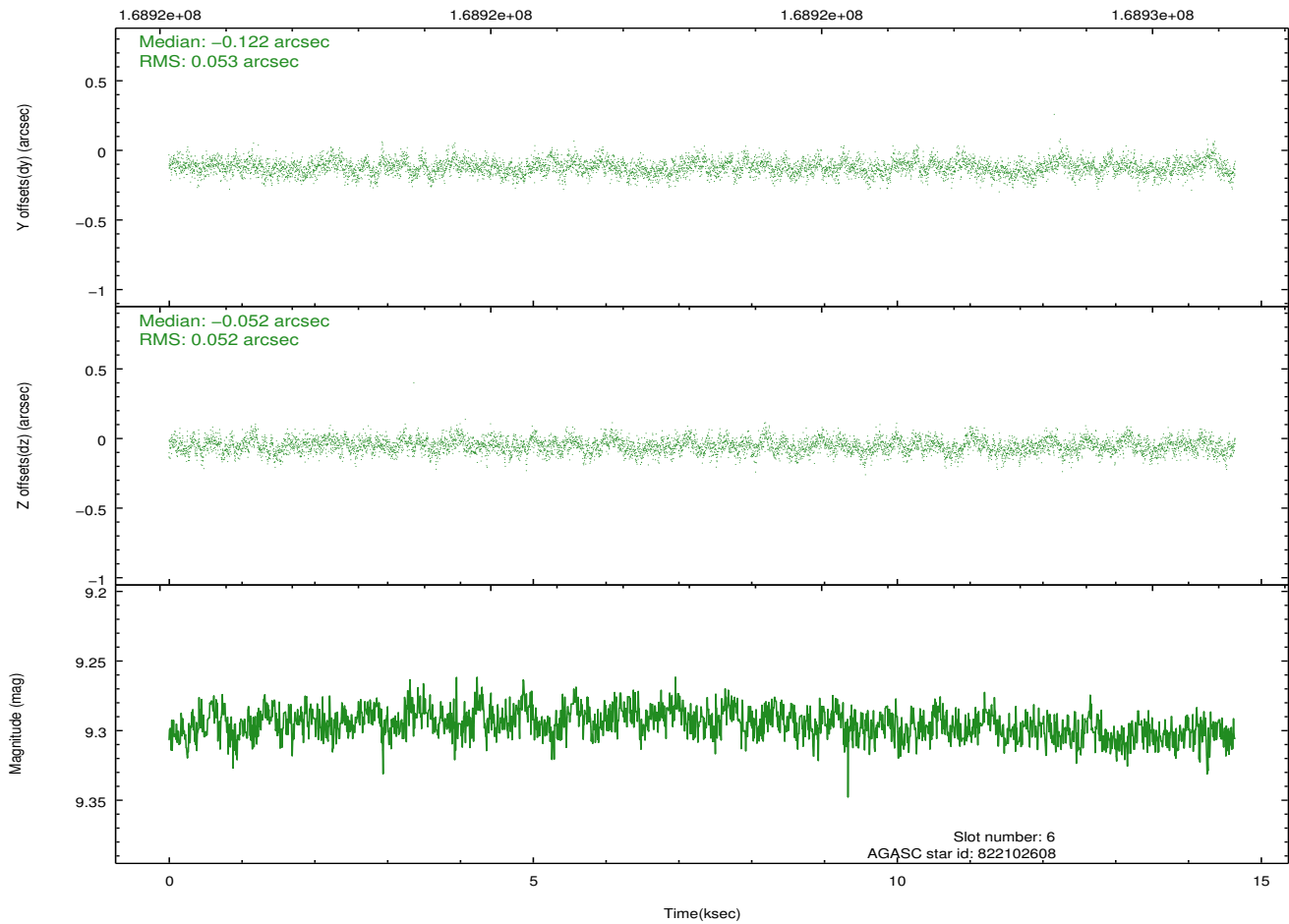
2.4.3 Slot 5



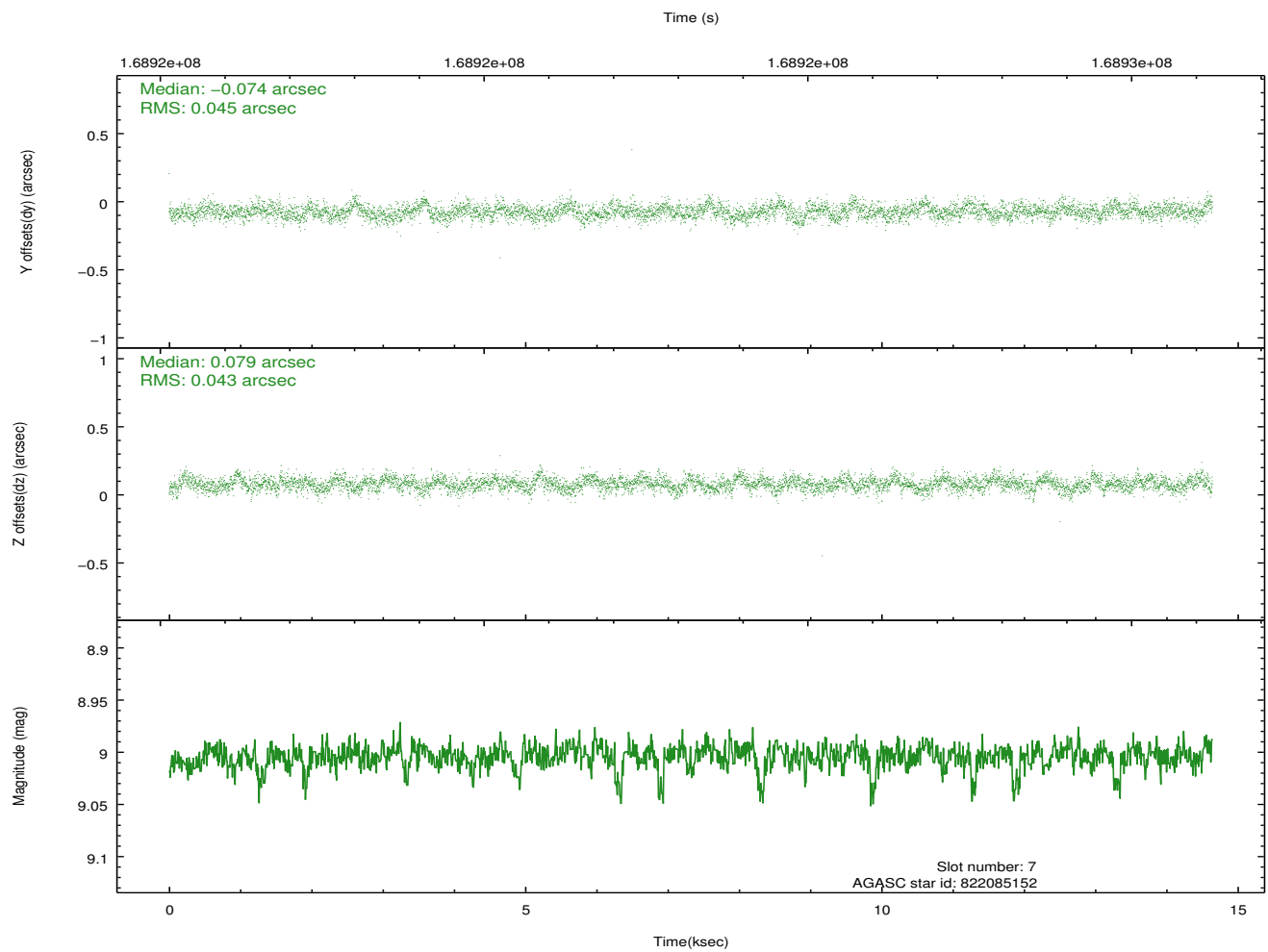
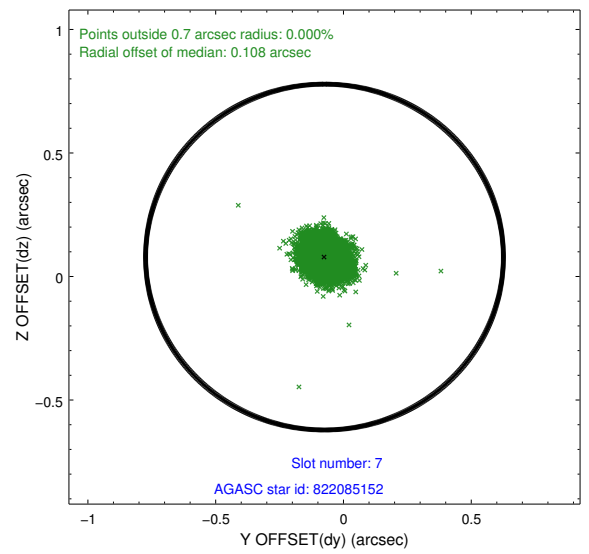
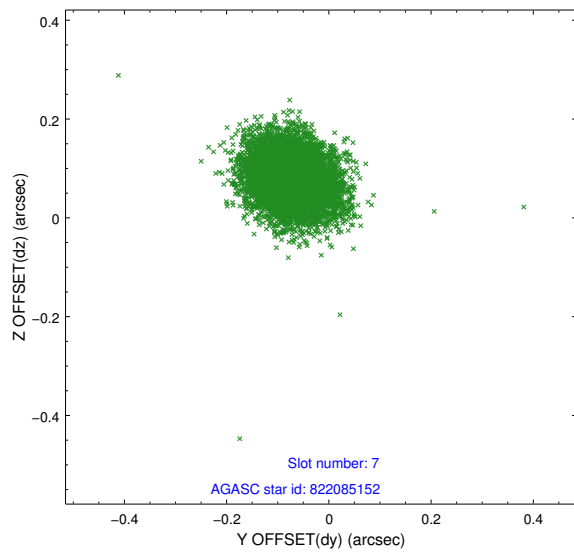
2.4.4 Slot 6



Time (s)

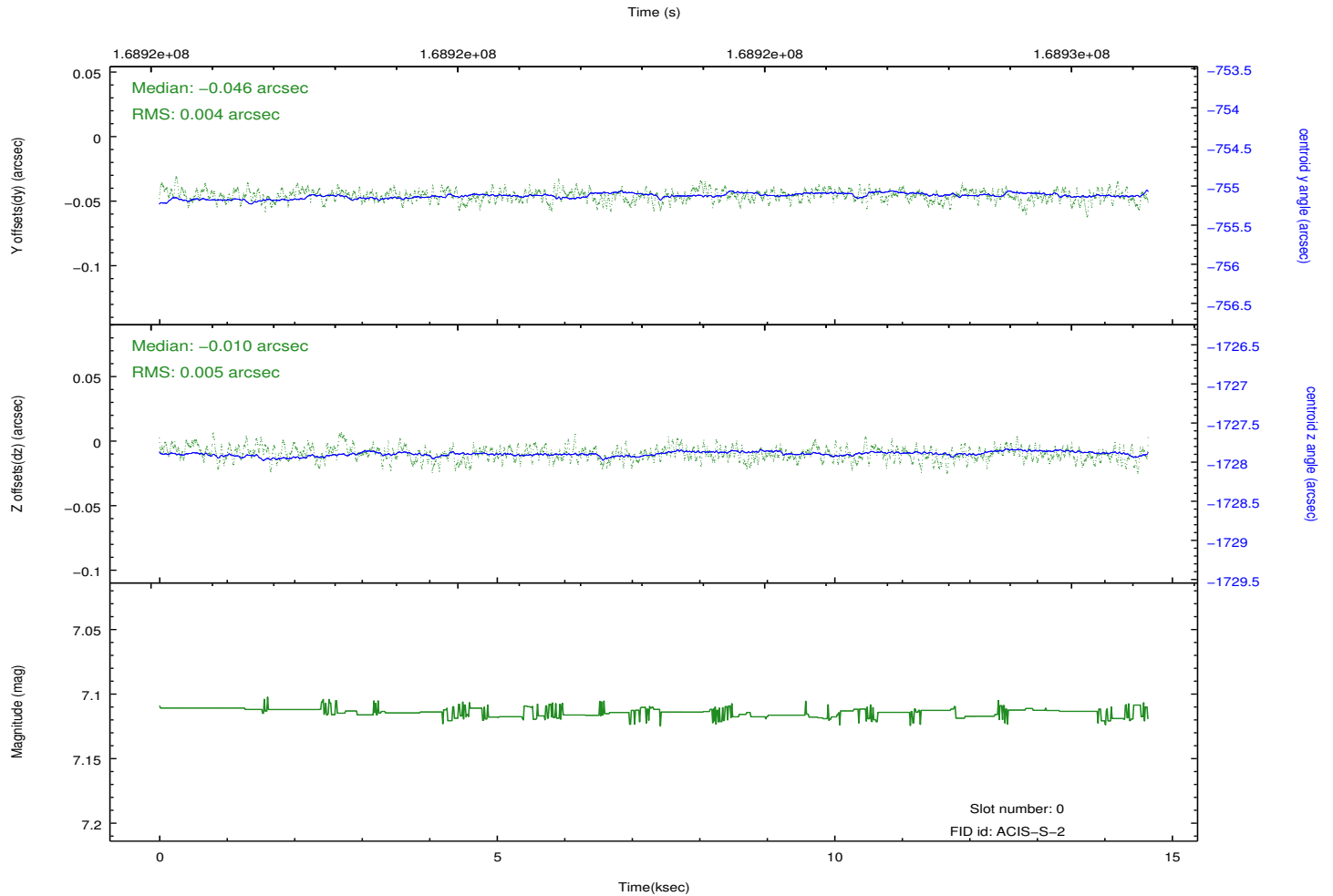
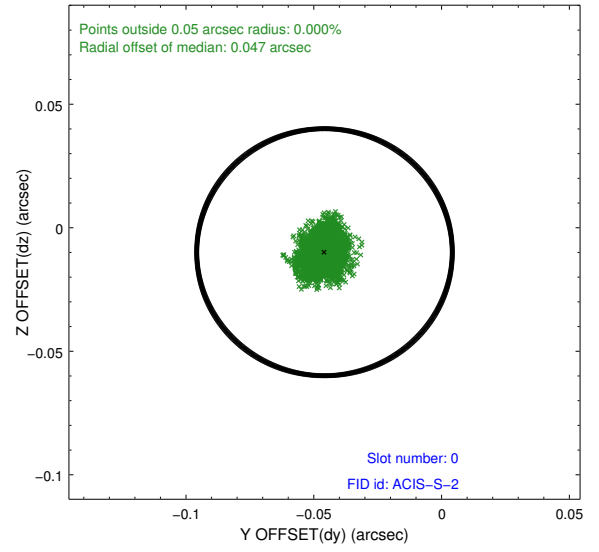
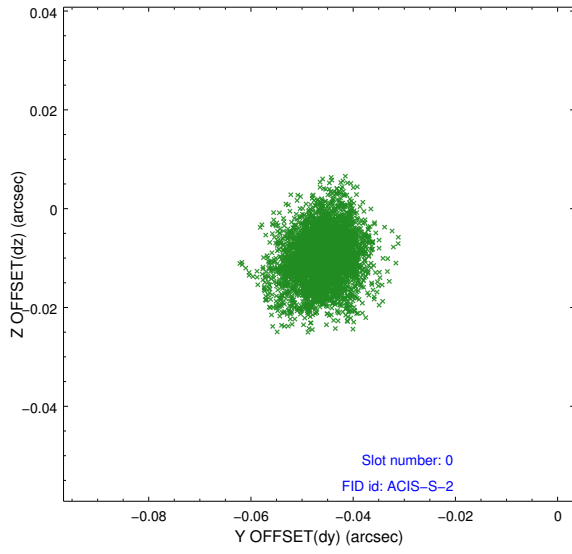


2.4.5 Slot 7

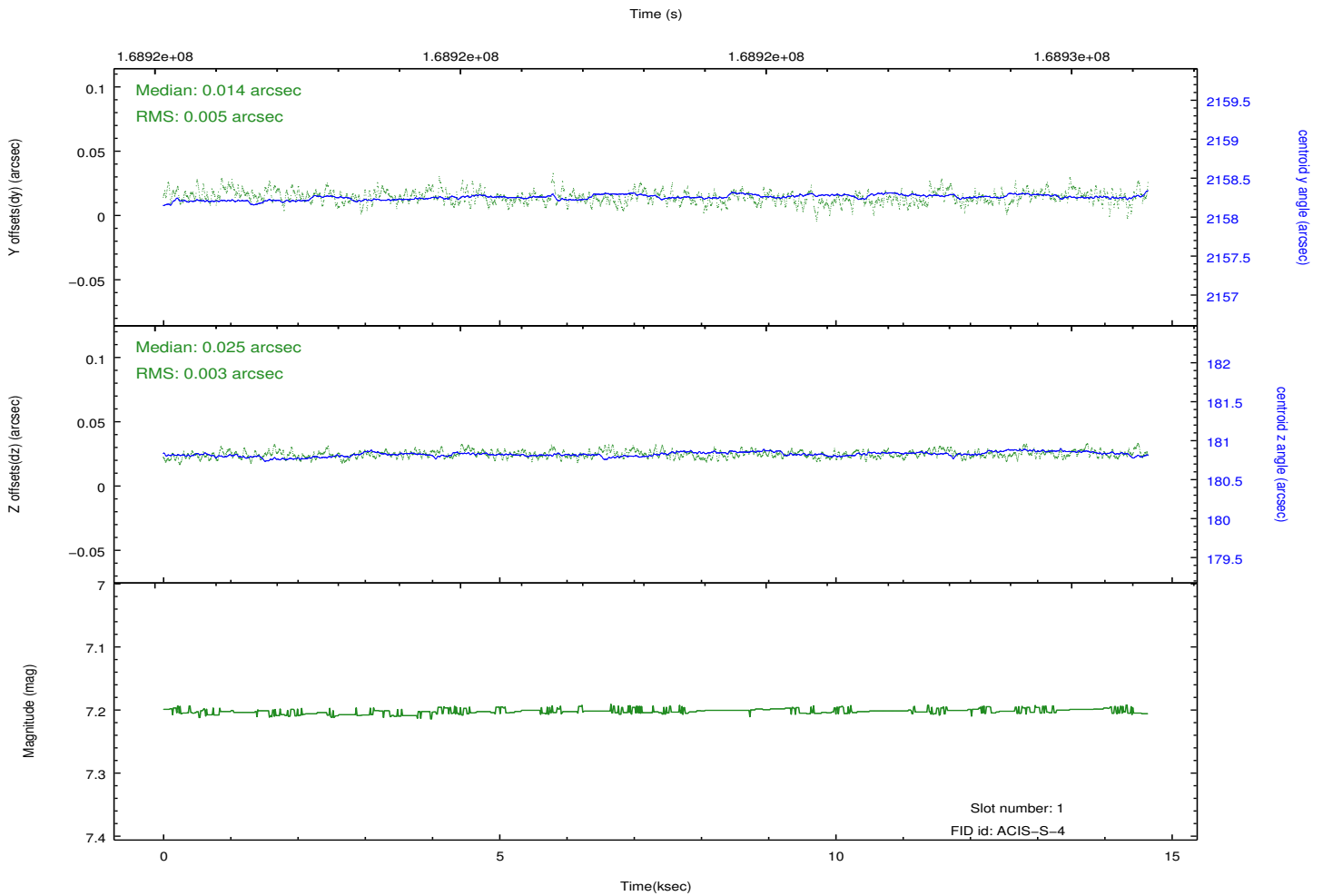
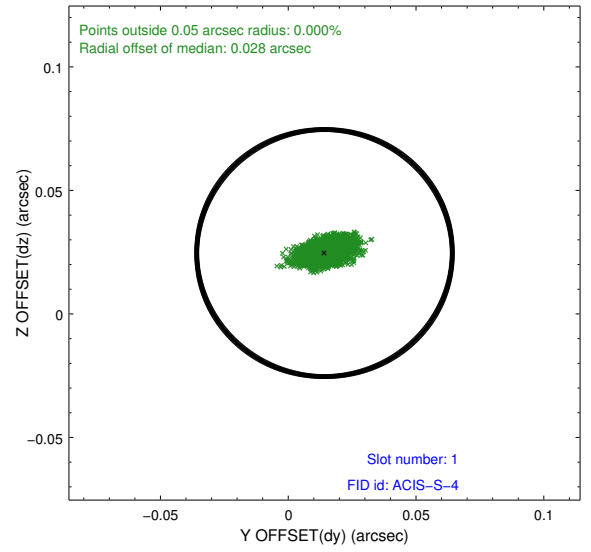
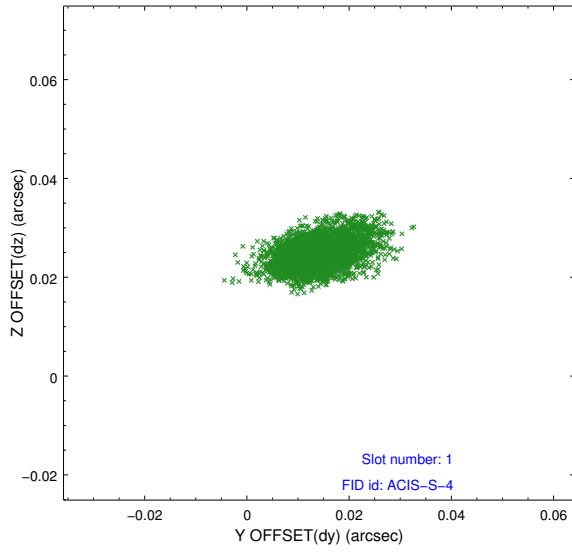


2.5 FID Slots

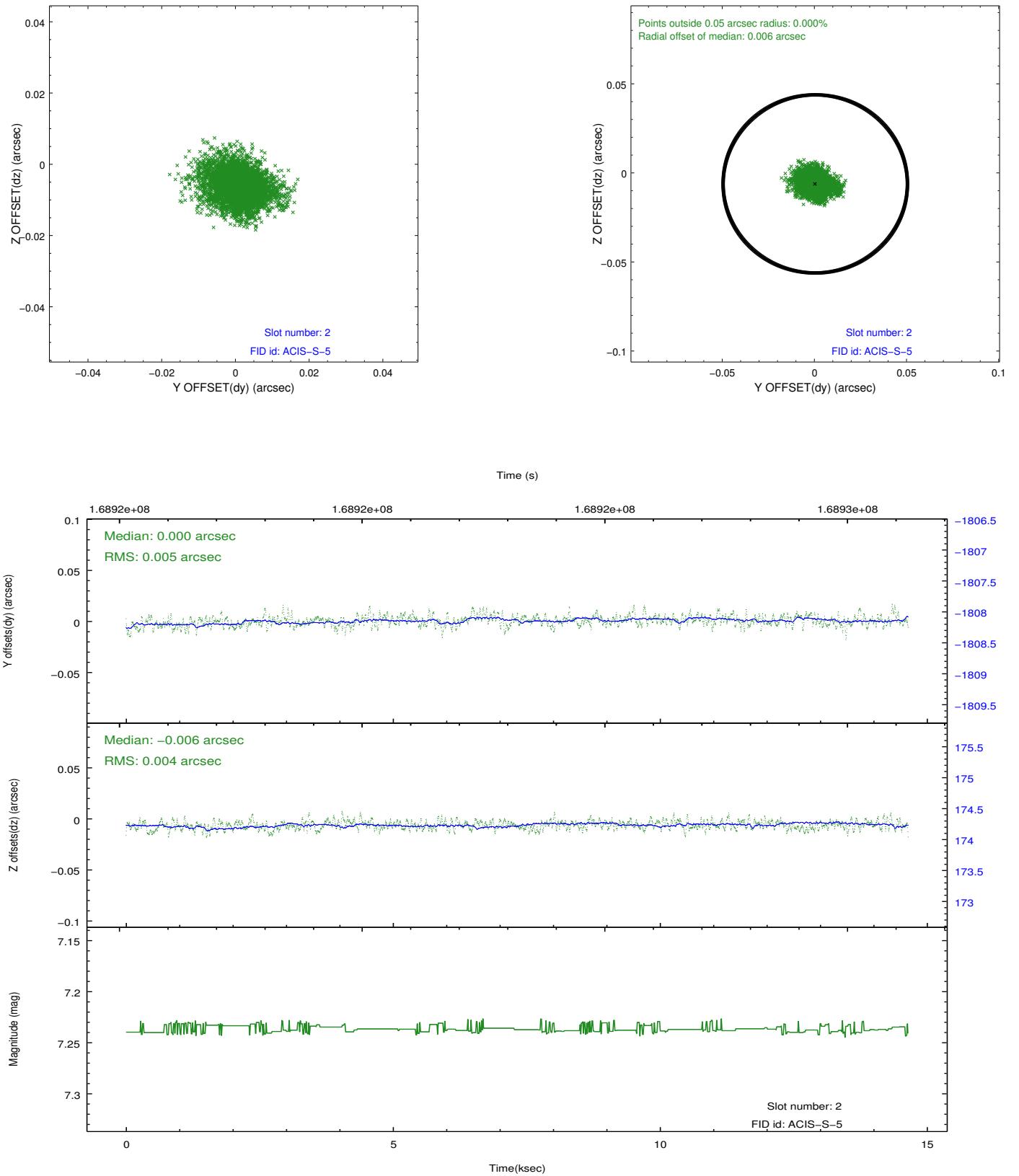
2.5.1 Slot 0



2.5.2 Slot 1



2.5.3 Slot 2



A Summary

A.1 Status

V&V Scientist	Beth Sundheim
V&V Date (YYYY-MM-DD)	2012.11.14
V&V Edition	1
V&V Disposition and Status	OK
V&V Charge Time	13.964

A.2 Comments