

V&V Reference Report

L2 ASCDS Version : 8.4.5

Observation 3929 - L2 Version 3
Chandra X-Ray Center

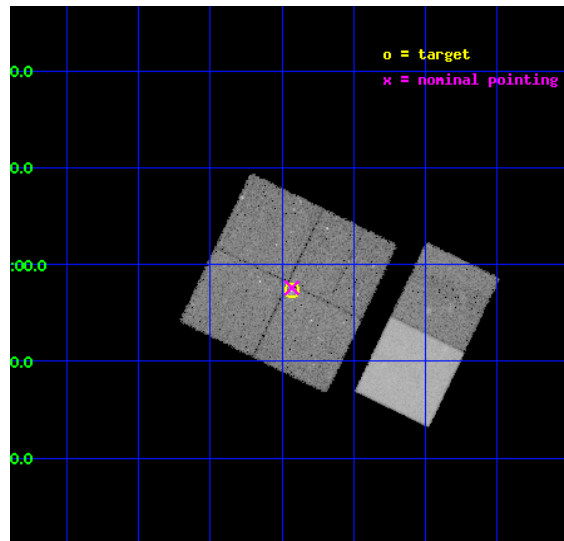
L2 Processing Date : Oct 26 2012

Contents

1	Front	2
2	OBI	3
2.1	OBI	3
2.1.1	Images	3
2.1.2	Bias	3
2.1.3	Parameters	4
2.1.4	Events	4
2.2	Compared Parameters	5
2.3	Aspect	6
2.4	Star Slots	9
2.4.1	Slot 3	9
2.4.2	Slot 4	10
2.4.3	Slot 5	11
2.4.4	Slot 6	12
2.4.5	Slot 7	13
2.5	FID Slots	14
2.5.1	Slot 0	14
2.5.2	Slot 1	15
2.5.3	Slot 2	16
A	Summary	17
A.1	Status	17
A.2	Comments	17

1 Front

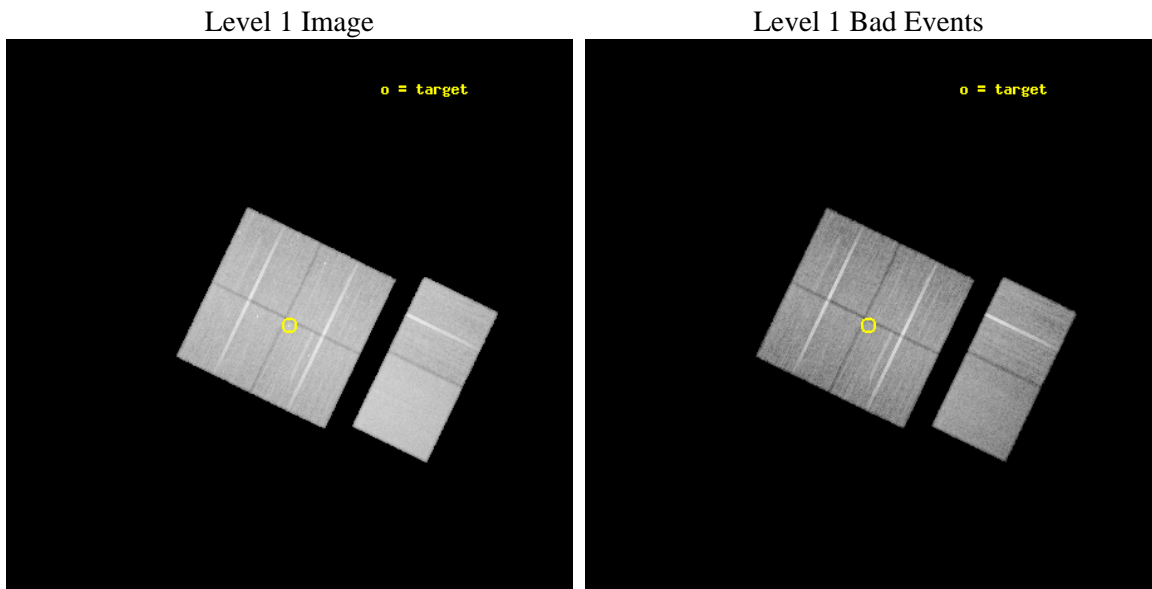
seq_num	600303	Sequence number
obs_id	3929	Observation id
title	X-RAY HALOES OF MASSIVE DISC GALAXIES: TESTING GALAXY FORMATION	Pr
observer	Dr. Kristian Pedersen	Principal investigator
object	NGC 5746	Source name
dtcycle	0	
cycle	P	events from which exps? Prim/Second/Both
ra_targ	221.232917	Observer's specified target RA [deg]
dec_targ	1.955278	Observer's specified target Dec [deg]
ra_nom	221.23268931036	Nominal RA [deg]
dec_nom	1.9598813928676	Nominal Dec [deg]
roll_nom	115.82158121784	Nominal Roll [deg]
revision	3	Processing version of data
ontime	37289.517890543	Sum of GTIs [s]
livetime	36817.335561961	Livetime [s]
ontime0	37289.517880559	Sum of GTIs [s]
ontime1	37289.517900497	Sum of GTIs [s]
ontime2	37295.999861062	Sum of GTIs [s]
ontime3	37289.517890543	Sum of GTIs [s]
ontime6	37295.999861062	Sum of GTIs [s]
ontime7	37295.999861062	Sum of GTIs [s]
l2events	240705	Number of level 2 events



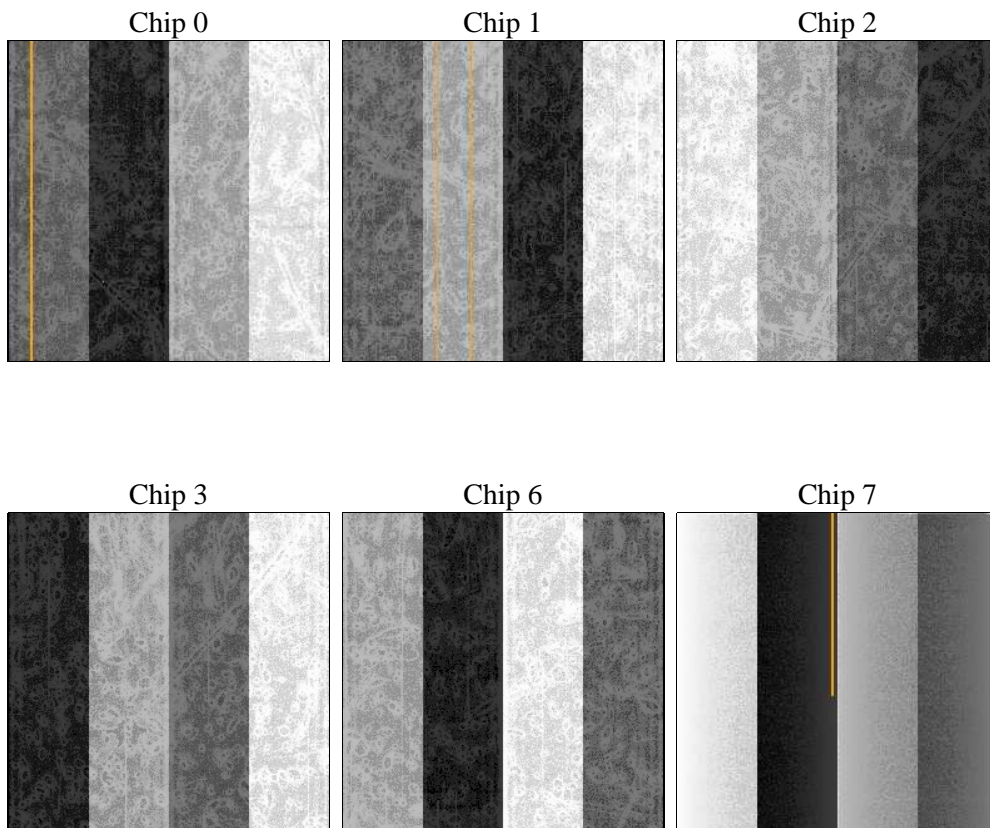
2 OBI

2.1 OBI

2.1.1 Images



2.1.2 Bias



2.1.3 Parameters

obi_num	0	Obi number	sched_exp_time	37137.000000	[s] Scheduled observation exposure time
ascdsver	8.4.5	Processing system revision	ontime	37289.517890543	Sum of GTIs [s]
caldbver	4.5.2	 	ontime0	37289.517880559	Sum of GTIs [s]
date	2012-10-26T14:01:24	Date and time of file creation	ontime1	37289.517900497	Sum of GTIs [s]
revision	3	Processing version of data	ontime2	37295.999861062	Sum of GTIs [s]
			ontime3	37289.517890543	Sum of GTIs [s]
			ontime6	37295.999861062	Sum of GTIs [s]
			ontime7	37295.999861062	Sum of GTIs [s]
			l1events	1402144	Number of level 1 events

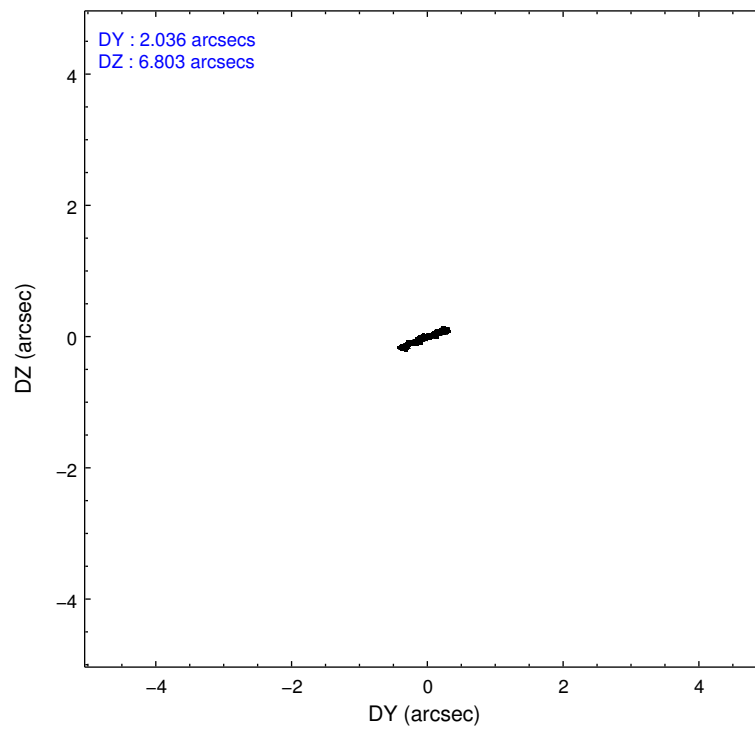
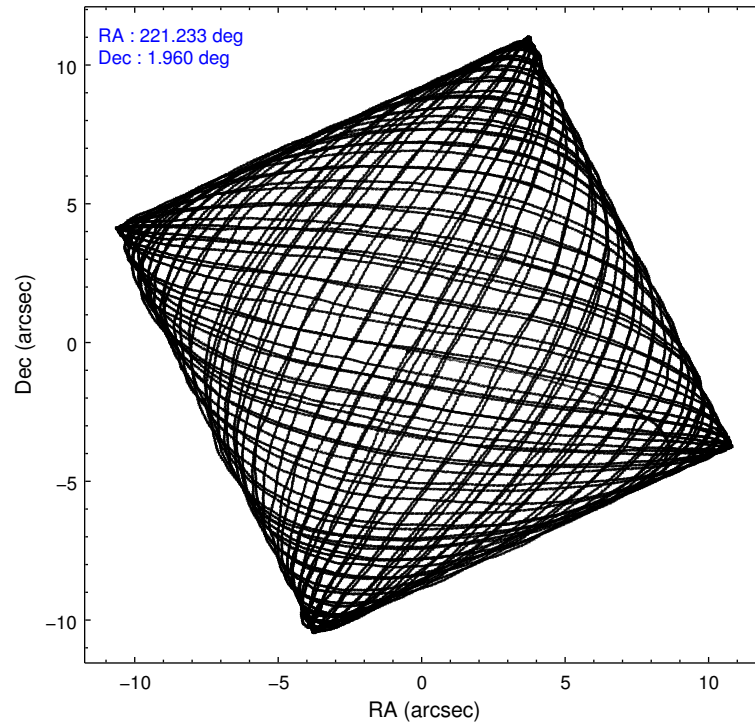
2.1.4 Events

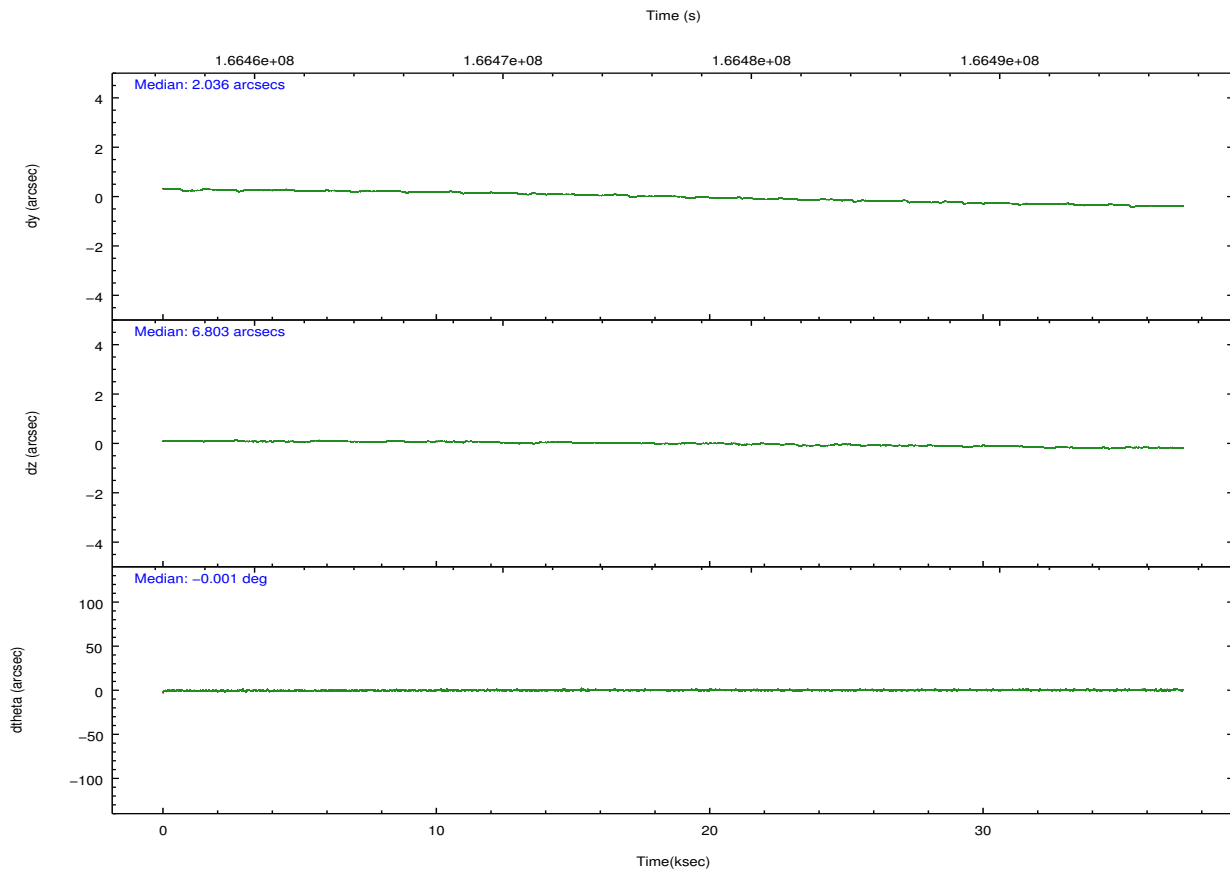
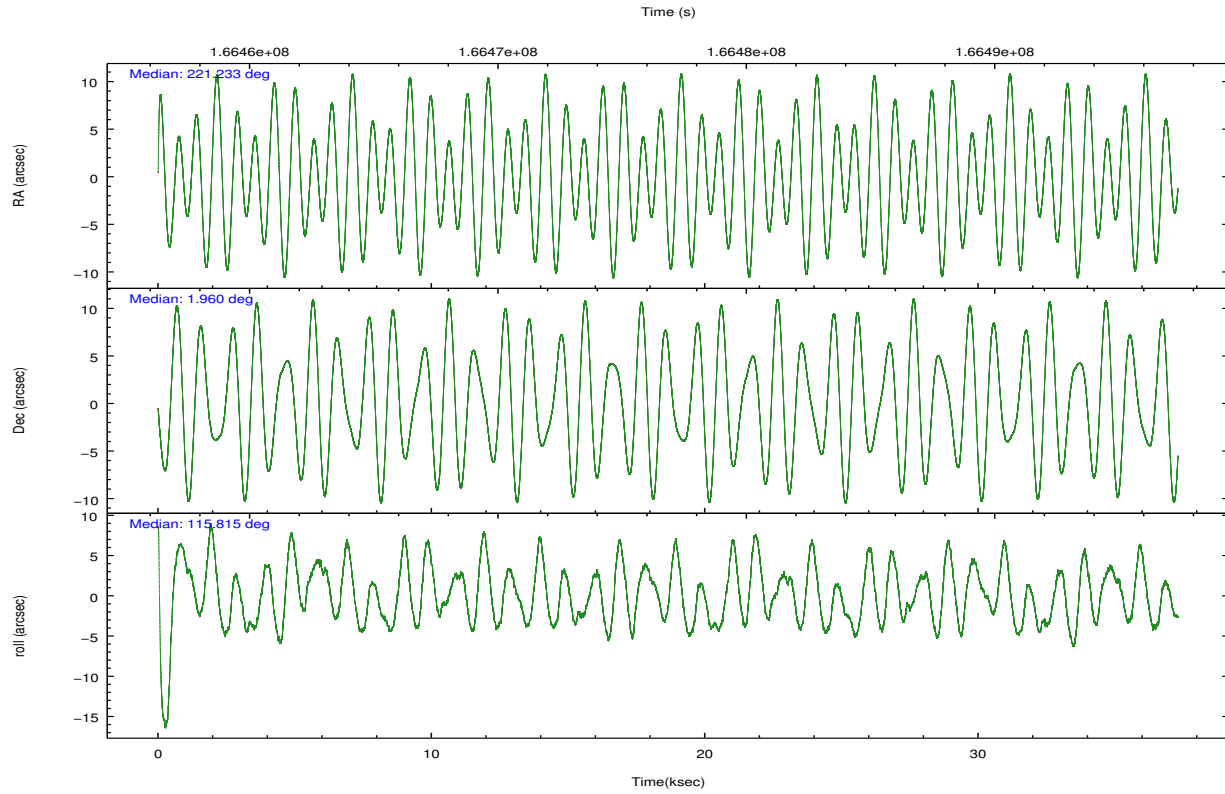
	ccd 0	ccd 1	ccd 2	ccd 3	ccd 6	ccd 7		ccd 0	ccd 1	ccd 2	ccd 3	ccd 6	ccd 7
level 1 events	208036	211097	226714	225872	229280	301145	grade 0 events	12341	11648	12204	13162	11173	11607
rejected events	180569	182144	199892	197879	201771	177143		5%	5%	5%	5%	4%	3%
rejected %	86%	86%	88%	87%	88%	58%	grade 1 events	123	119	132	130	112	288
								0%	0%	0%	0%	0%	0%
							grade 2 events	5508	6180	5247	5091	5677	24716
								2%	2%	2%	2%	2%	8%
							grade 3 events	2750	2951	2515	2654	2677	11020
								1%	1%	1%	1%	1%	3%
							grade 4 events	2437	2830	2582	2608	2596	11175
								1%	1%	1%	1%	1%	3%
							grade 5 events	8903	9292	8505	9824	10220	28543
								4%	4%	3%	4%	4%	9%
							grade 6 events	4575	5502	4392	4609	5535	66088
								2%	2%	1%	2%	2%	21%
							grade 7 events	171399	172575	191137	187794	191290	147708
								82%	81%	84%	83%	83%	49%

2.2 Compared Parameters

Parameter	Planned	Actual	Parameter	Planned	Actual
Instrument	ACIS	ACIS	Obspar format version number	7	7
Detector	ACIS-012367	ACIS-012367	Obspar file type	PREDICTED	ACTUAL
Grating	NONE	NONE	Obspar update status	NONE	UPDATED
Data mode	VFAINT	VFAINT	Number of optional ACIS chips dropped	0	0
Observation mode	POINTING	POINTING	On-chip summing requested	N	N
[deg] Pointing RA	221.255412	221.2326893103647	Subarray requested	NONE	NONE
[deg] Pointing Dec	1.944614	1.959881392867637	Alternating exposures requested	N	N
[deg] Pointing Roll	115.612115	115.8215812178388	[s] Primary exposure time	0.000000	3.2
[mm] SIM focus pos	-0.782348	-0.7809083437167272			
[mm] SIM defocus	0	0.001439871863259334			
[mm] SIM translation stage pos	-233.592463	-233.5874344608287			
[mm] SIM translation stage offset	0	-0.005018542100998502			
[s] Observation start time (MET)	166458367.184000	166457216.11996			
Observation start date	2003-04-11T14:25:03	2003-04-11T14:06:56			
[s] Observation end time (MET)	166495504.184000	166495732.54658			
Observation end date	2003-04-12T00:44:00	2003-04-12T00:48:52			
Read mode	TIMED	TIMED			

2.3 Aspect



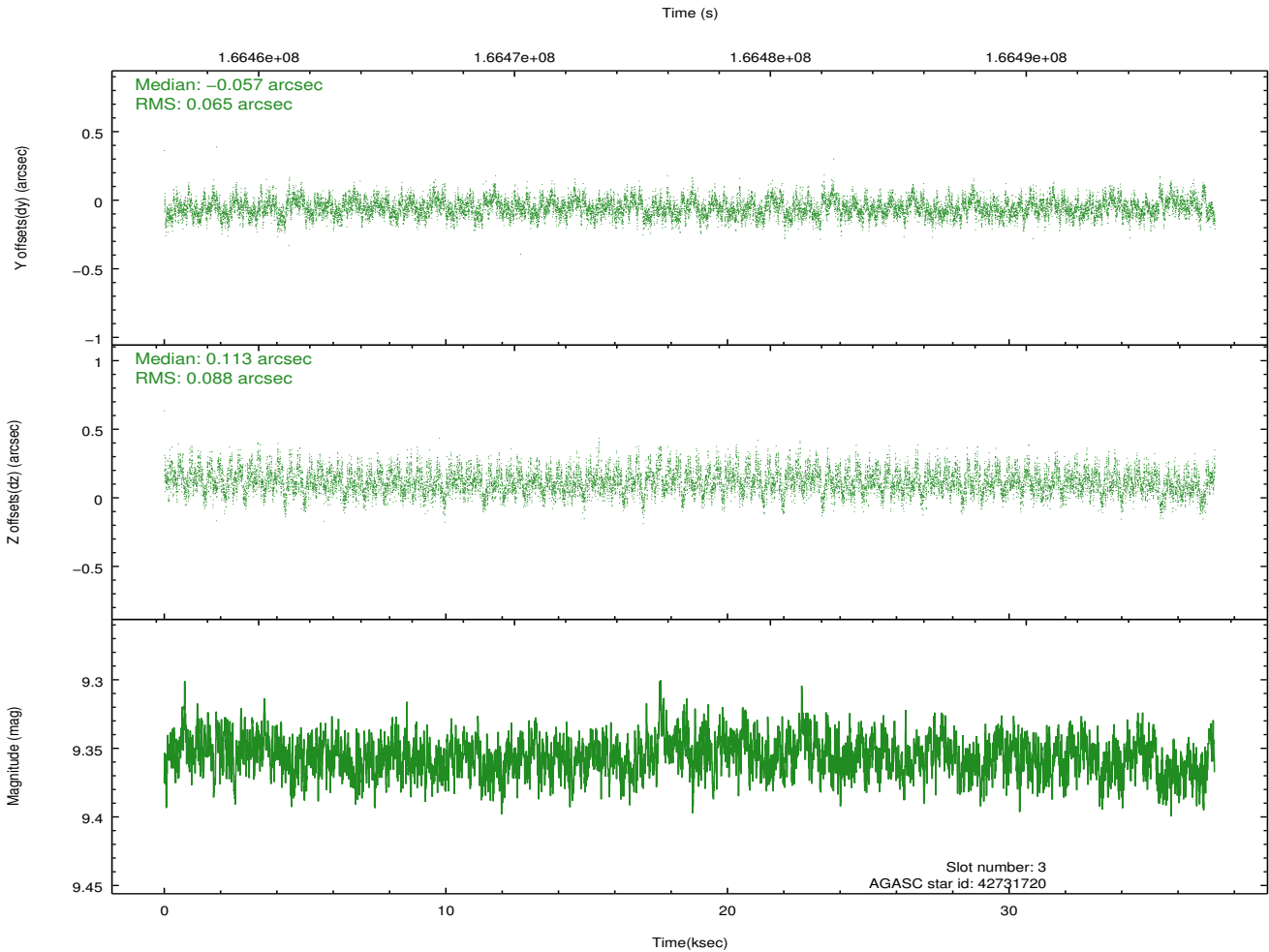
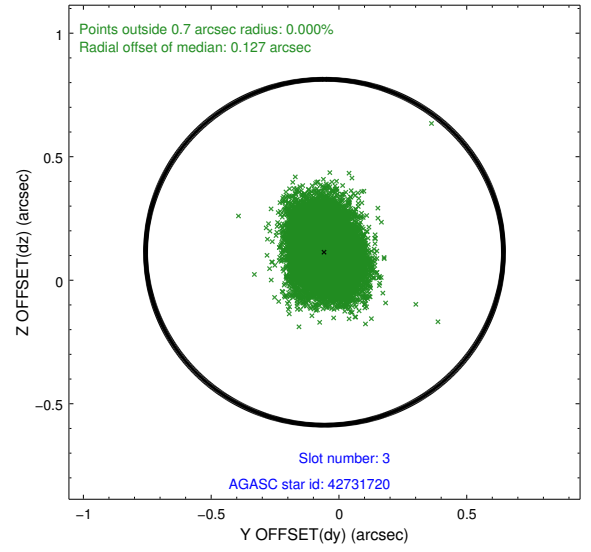
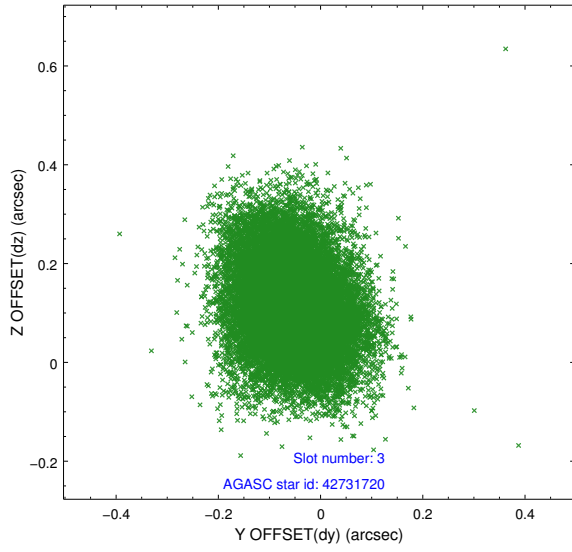


Slot Statistics

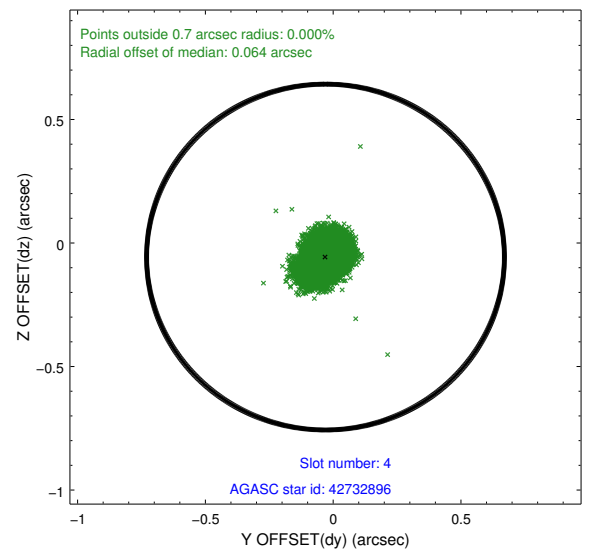
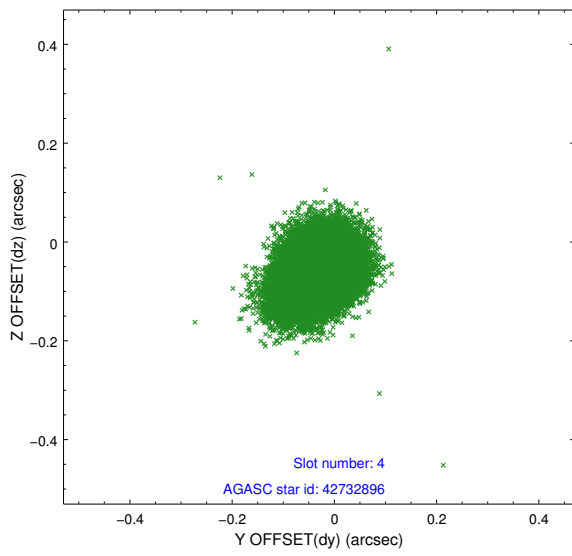
slot	status	id	mag	n_pts	med_dy	med_dz	dr1	dr2	ra	dec	mean_y	mean_z
0	FID	ACIS-I-1	7.25	9099	-0.024	0.025	0.007	0.012	0.000000	0.000000	937.77	-830.15
1	FID	ACIS-I-2	7.16	9098	0.010	-0.066	0.009	0.016	0.000000	0.000000	-756.26	-836.68
2	FID	ACIS-I-5	7.23	9097	-0.079	0.113	0.008	0.014	0.000000	0.000000	-1810.54	1067.43
3	GUIDE	42731720	9.36	18187	-0.057	0.113	0.116	0.190	221.849516	2.202093	-87.18	-2327.56
4	GUIDE	42732896	7.78	18195	-0.030	-0.057	0.065	0.106	220.804479	1.824716	312.36	1649.76
5	GUIDE	43136448	9.22	18141	-0.130	0.054	0.092	0.146	221.328465	2.642482	2152.16	-1322.25
6	GUIDE	42739904	9.42	18167	0.122	-0.192	0.095	0.152	221.063801	1.147543	-2289.14	1862.04
7	GUIDE	42738664	9.29	18186	0.094	0.082	0.079	0.129	221.798995	1.603981	-1950.78	-1233.87

2.4 Star Slots

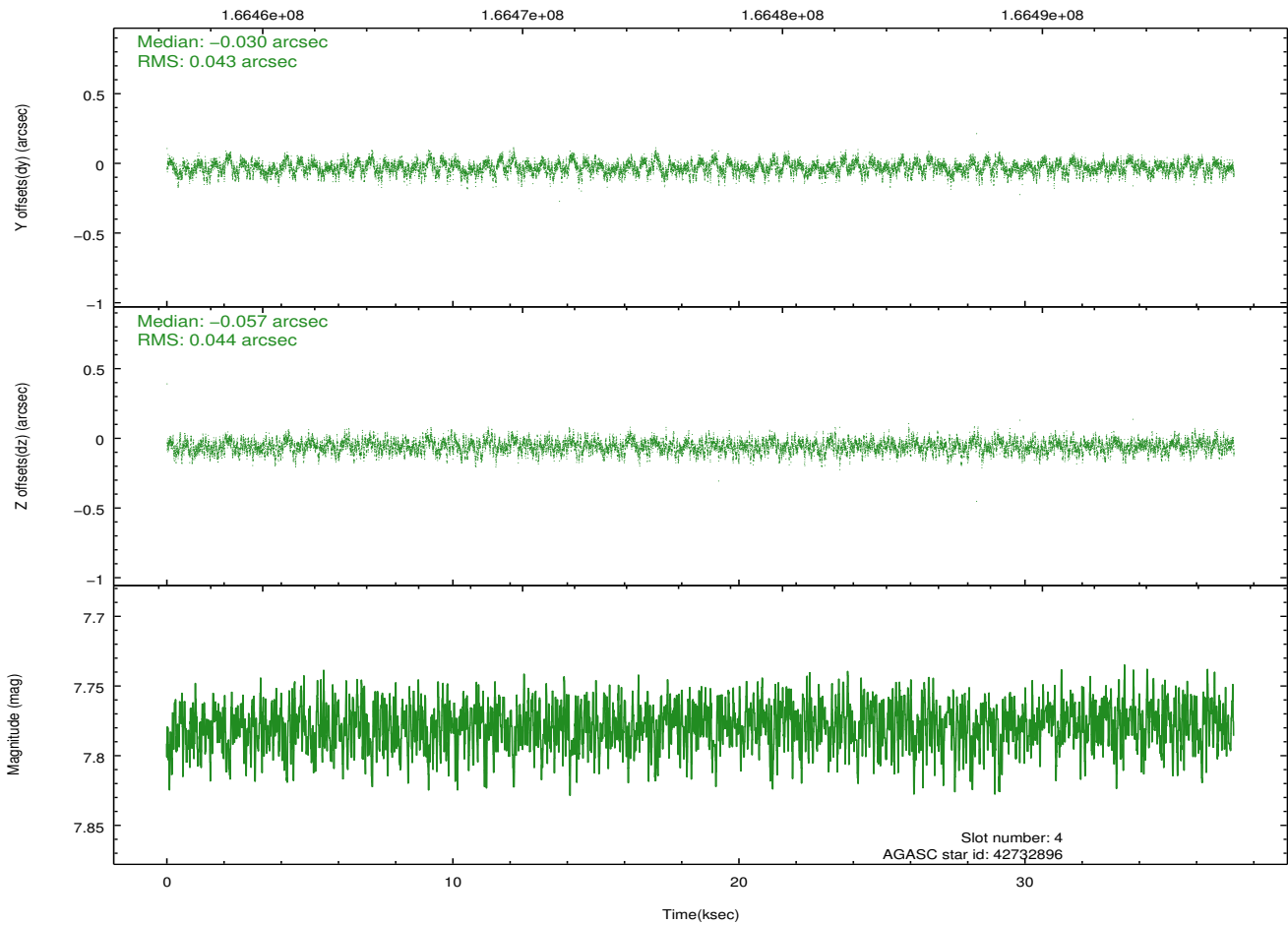
2.4.1 Slot 3



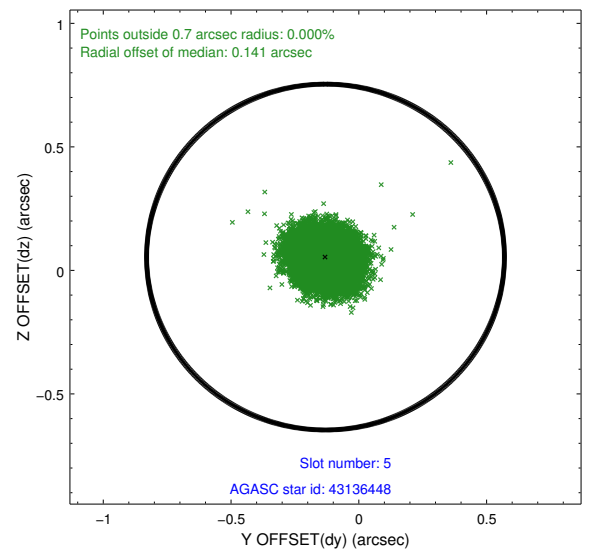
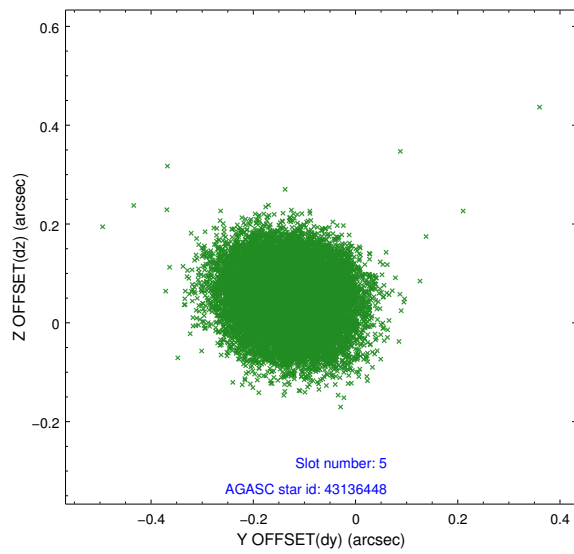
2.4.2 Slot 4



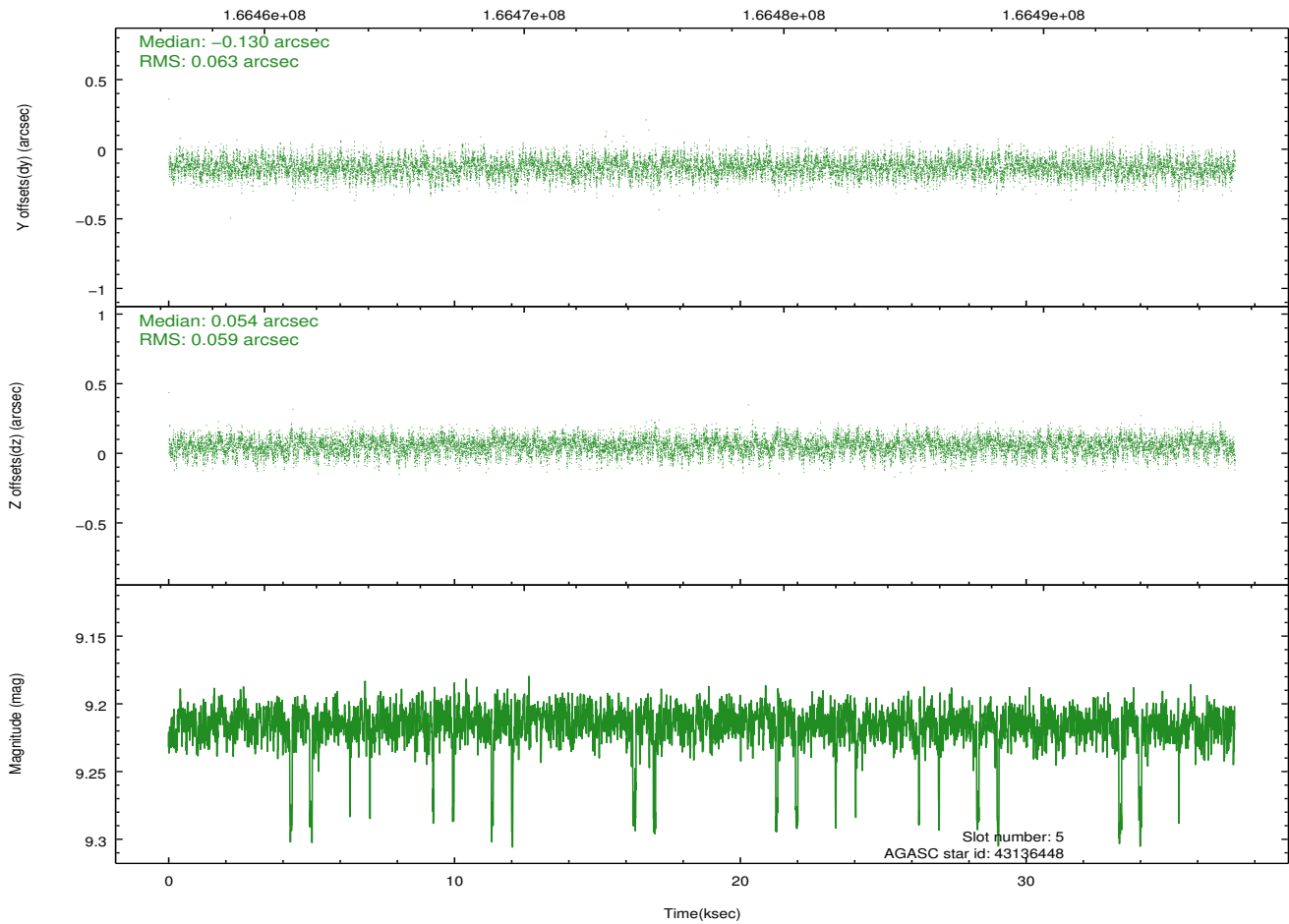
Time (s)



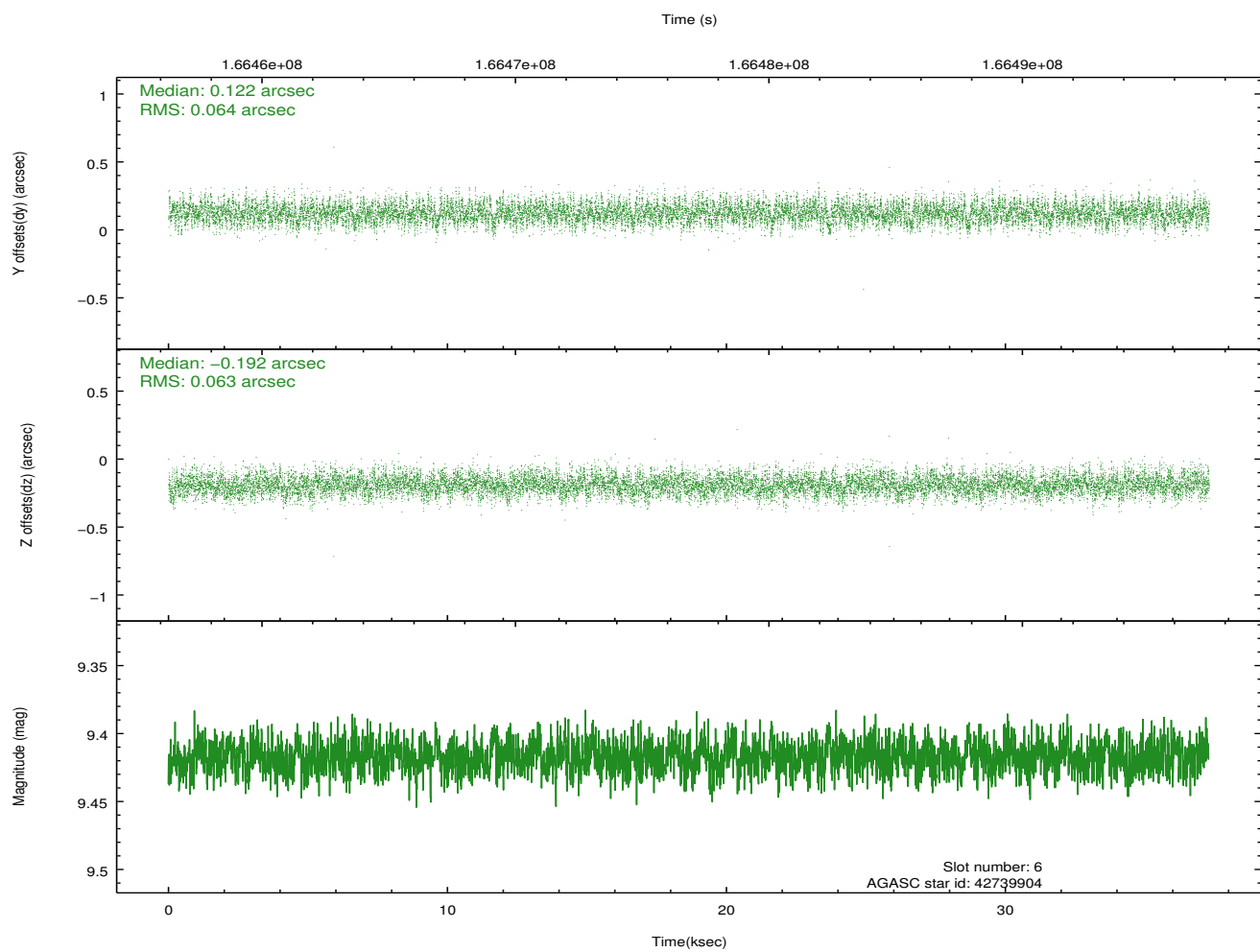
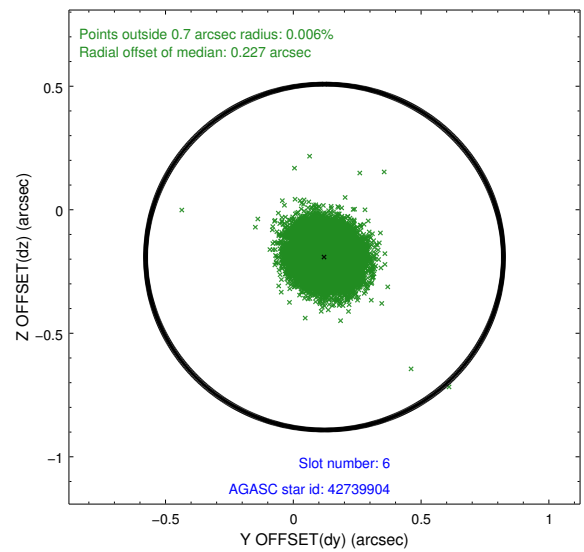
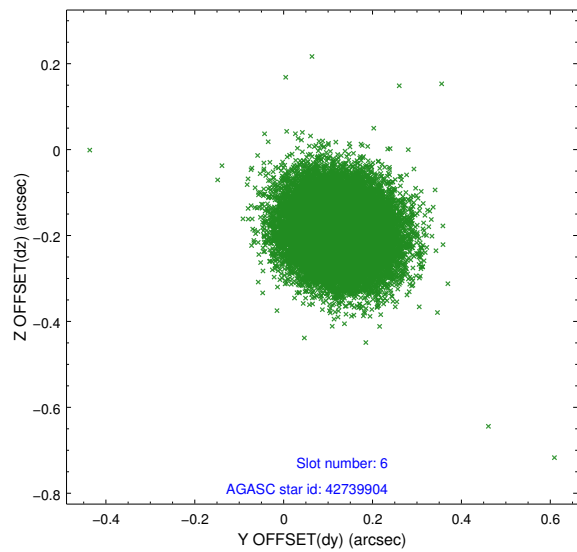
2.4.3 Slot 5



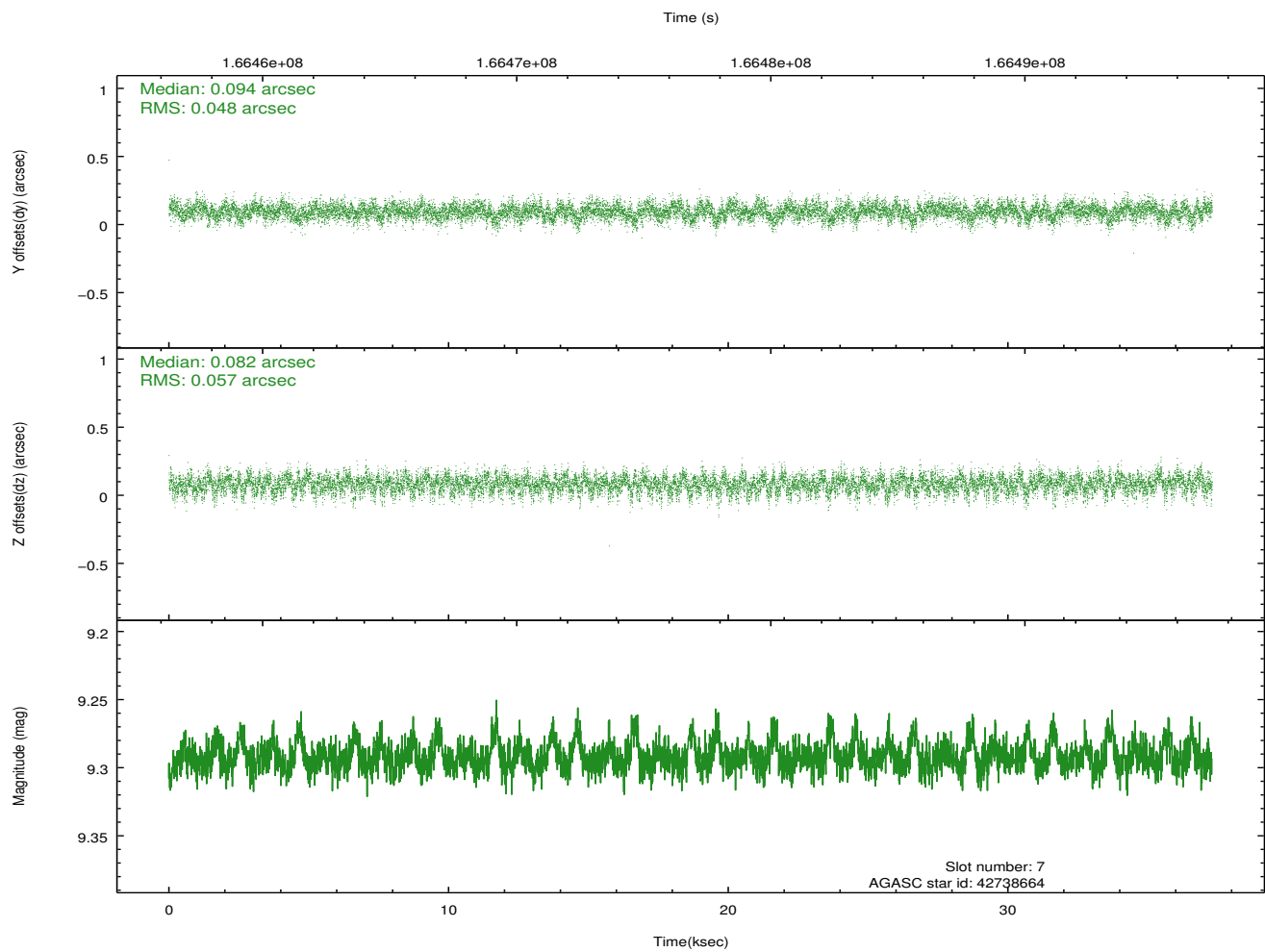
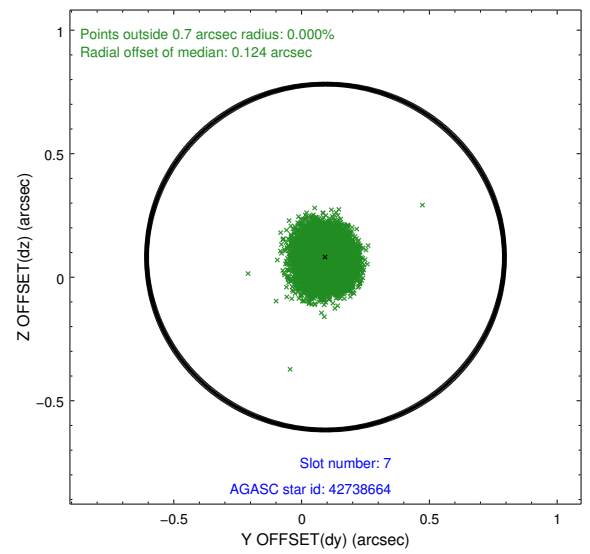
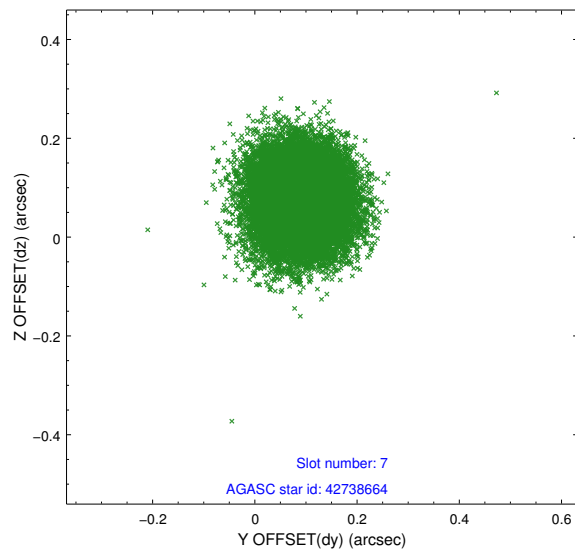
Time (s)



2.4.4 Slot 6

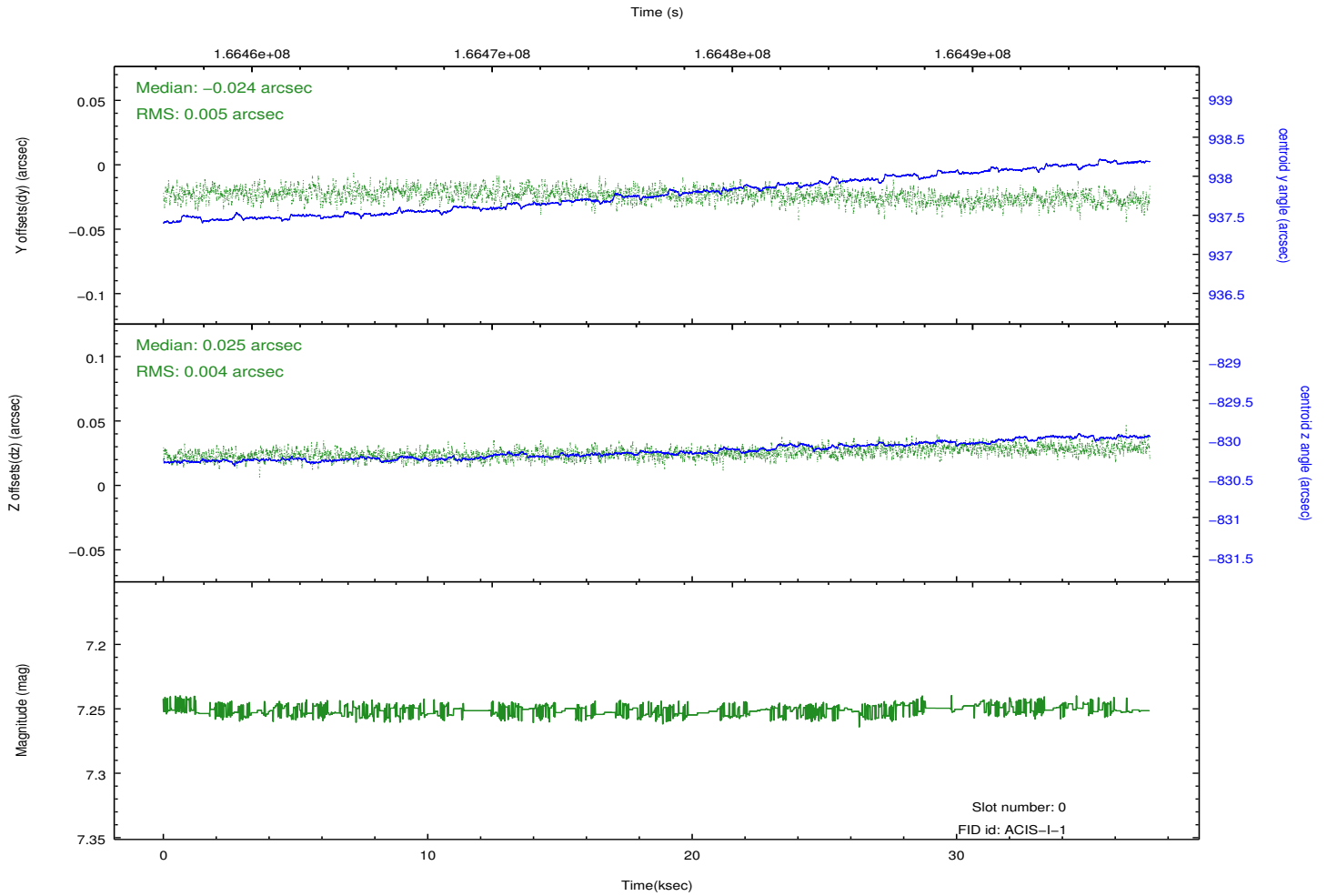
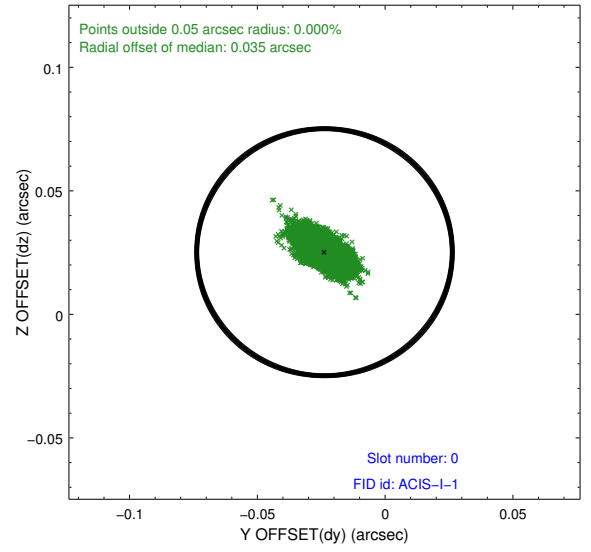
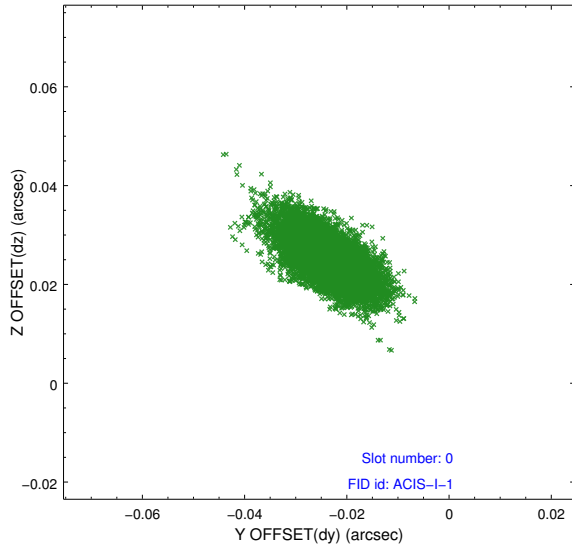


2.4.5 Slot 7

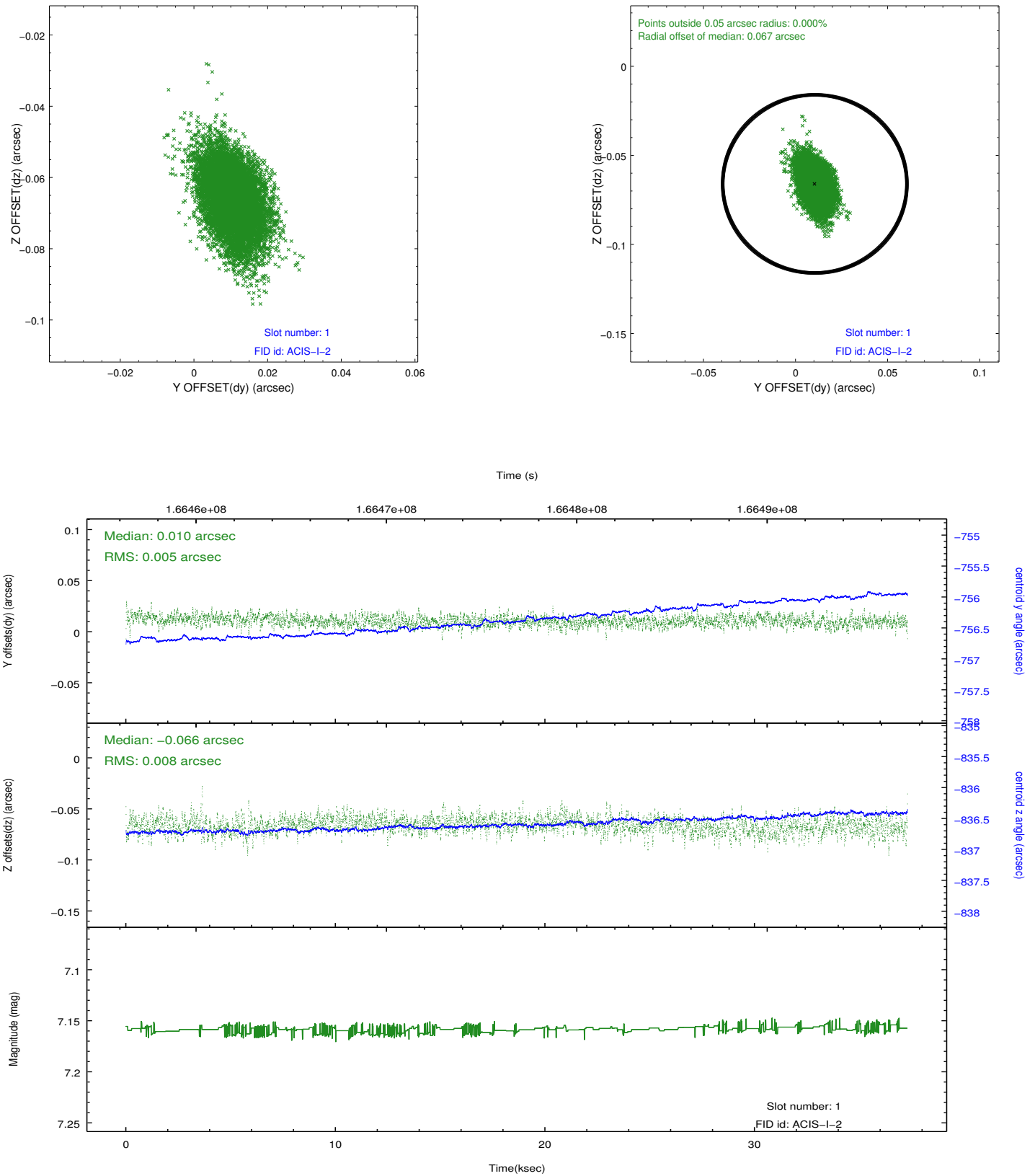


2.5 FID Slots

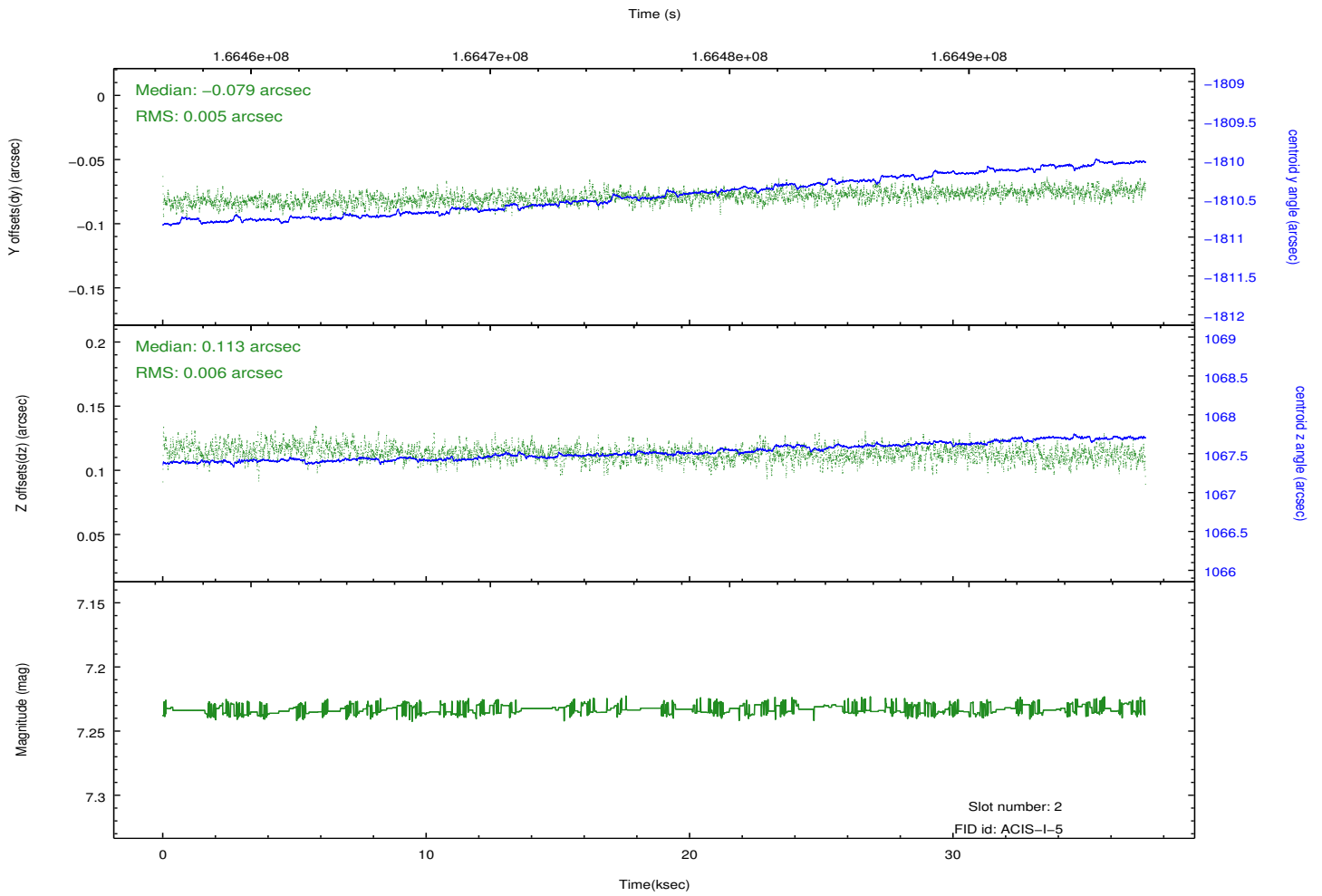
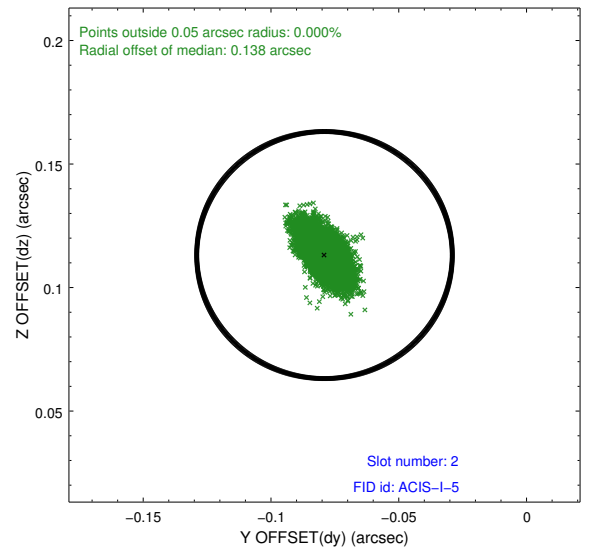
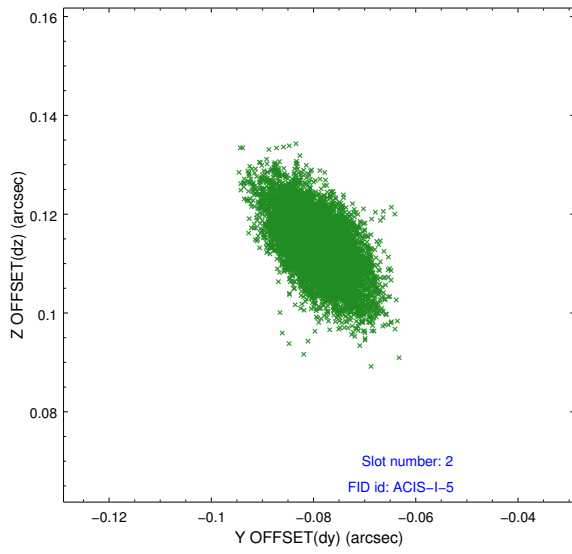
2.5.1 Slot 0



2.5.2 Slot 1



2.5.3 Slot 2



A Summary

A.1 Status

V&V Scientist	Beth Sundheim
V&V Date (YYYY-MM-DD)	2012.11.14
V&V Edition	1
V&V Disposition and Status	OK
V&V Charge Time	37.289

A.2 Comments