

V&V Reference Report

L2 ASCDS Version : 8.4.5

Observation 4029 - L2 Version 3
Chandra X-Ray Center

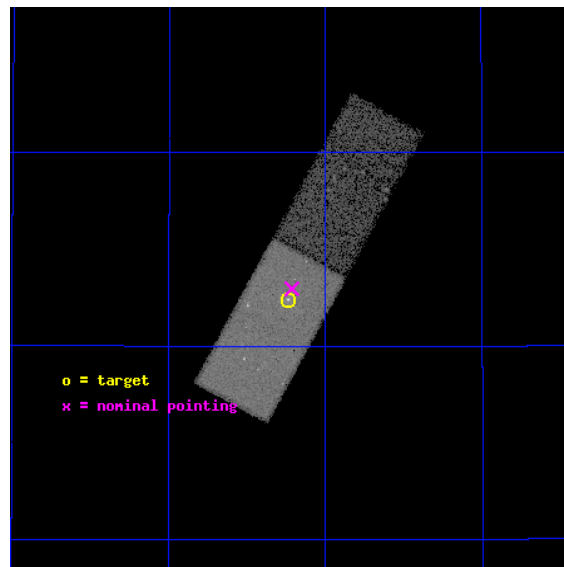
L2 Processing Date : Oct 22 2012

Contents

1	Front	2
2	OBI	3
2.1	OBI	3
2.1.1	Images	3
2.1.2	Bias	3
2.1.3	Parameters	4
2.1.4	Events	4
2.2	Compared Parameters	5
2.3	Aspect	6
2.4	Star Slots	9
2.4.1	Slot 3	9
2.4.2	Slot 4	10
2.4.3	Slot 5	11
2.4.4	Slot 6	12
2.4.5	Slot 7	13
2.5	FID Slots	14
2.5.1	Slot 0	14
2.5.2	Slot 1	15
2.5.3	Slot 2	16
A	Summary	17
A.1	Status	17
A.2	Comments	17

1 Front

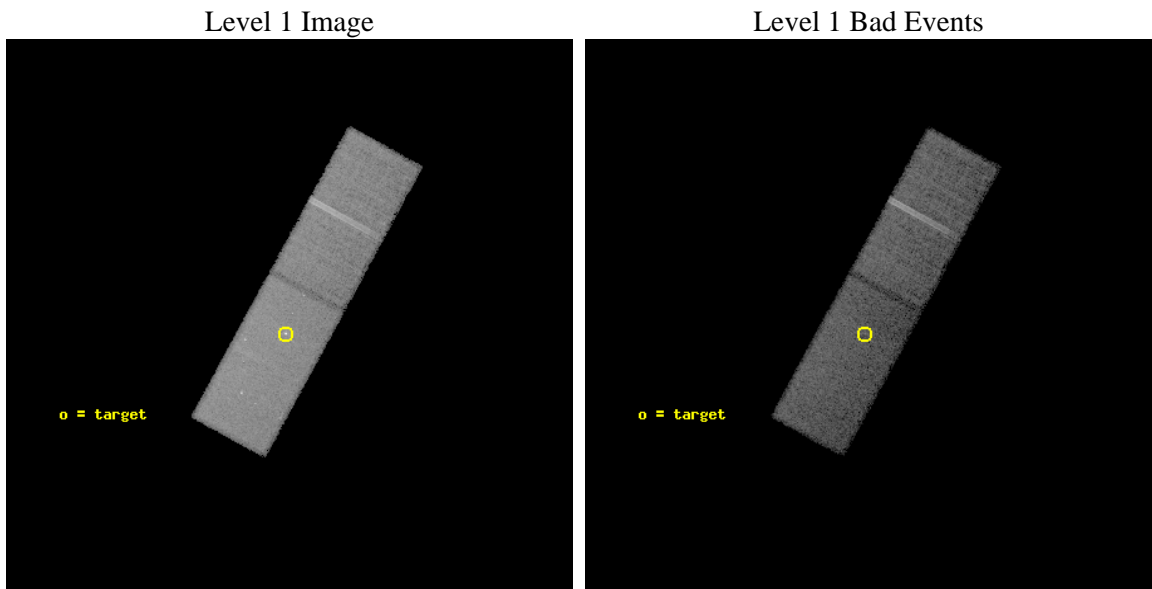
seq_num	700708	Sequence number
obs_id	4029	Observation id
title	PROBING THE NUCLEAR GEOMETRY OF THE MOST LUMINOUS GALAXY IN THE LOCAL UNIVERSE WITH CHANDRA	Proposal title
observer	Dr. Sarah Gallagher	Principal investigator
object	MARKARIAN 231	Source name
dtcycle	0	
cycle	P	events from which exps? Prim/Second/Both
ra_targ	194.059167	Observer's specified target RA [deg]
dec_targ	56.873667	Observer's specified target Dec [deg]
ra_nom	194.05353651095	Nominal RA [deg]
dec_nom	56.882801528224	Nominal Dec [deg]
roll_nom	118.71821843203	Nominal Roll [deg]
revision	3	Processing version of data
ontime	39623.999852359	Sum of GTIs [s]
livetime	38633.06181676	Livetime [s]
ontime6	39622.358842283	Sum of GTIs [s]
ontime7	39623.999852359	Sum of GTIs [s]
l2events	88836	Number of level 2 events



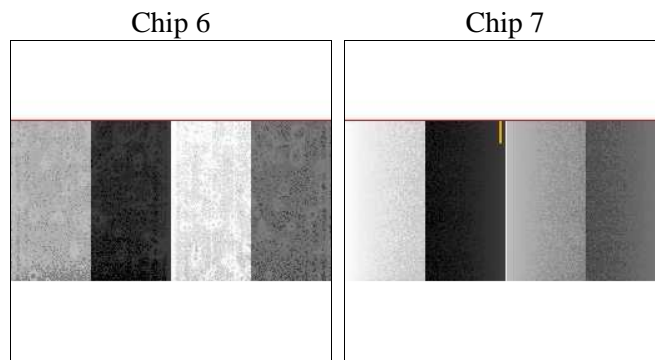
2 OBI

2.1 OBI

2.1.1 Images



2.1.2 Bias



2.1.3 Parameters

obi_num	0	Obi number	sched_exp_time	39500.000000	[s] Scheduled observation exposure time
ascdsver	8.4.5	Processing system revision	ontime	39623.999852359	Sum of GTIs [s]
caldbver	4.5.2	 	ontime6	39622.358842283	Sum of GTIs [s]
date	2012-10-22T08:32:03	Date and time of file creation	ontime7	39623.999852359	Sum of GTIs [s]
revision	3	Processing version of data	l1events	326763	Number of level 1 events

2.1.4 Events

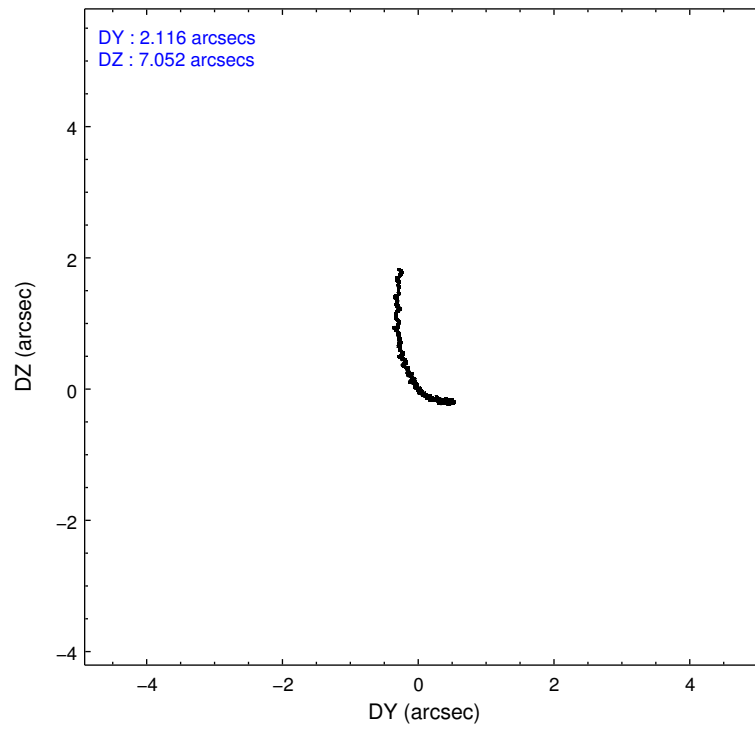
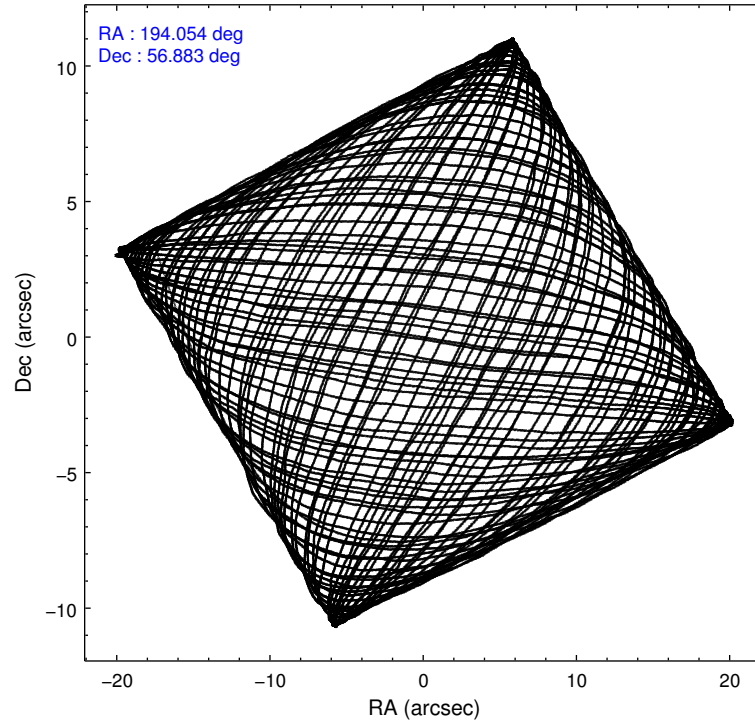
	ccd 6	ccd 7
level 1 events	147383	179380
rejected events	130751	102787
rejected %	88%	57%

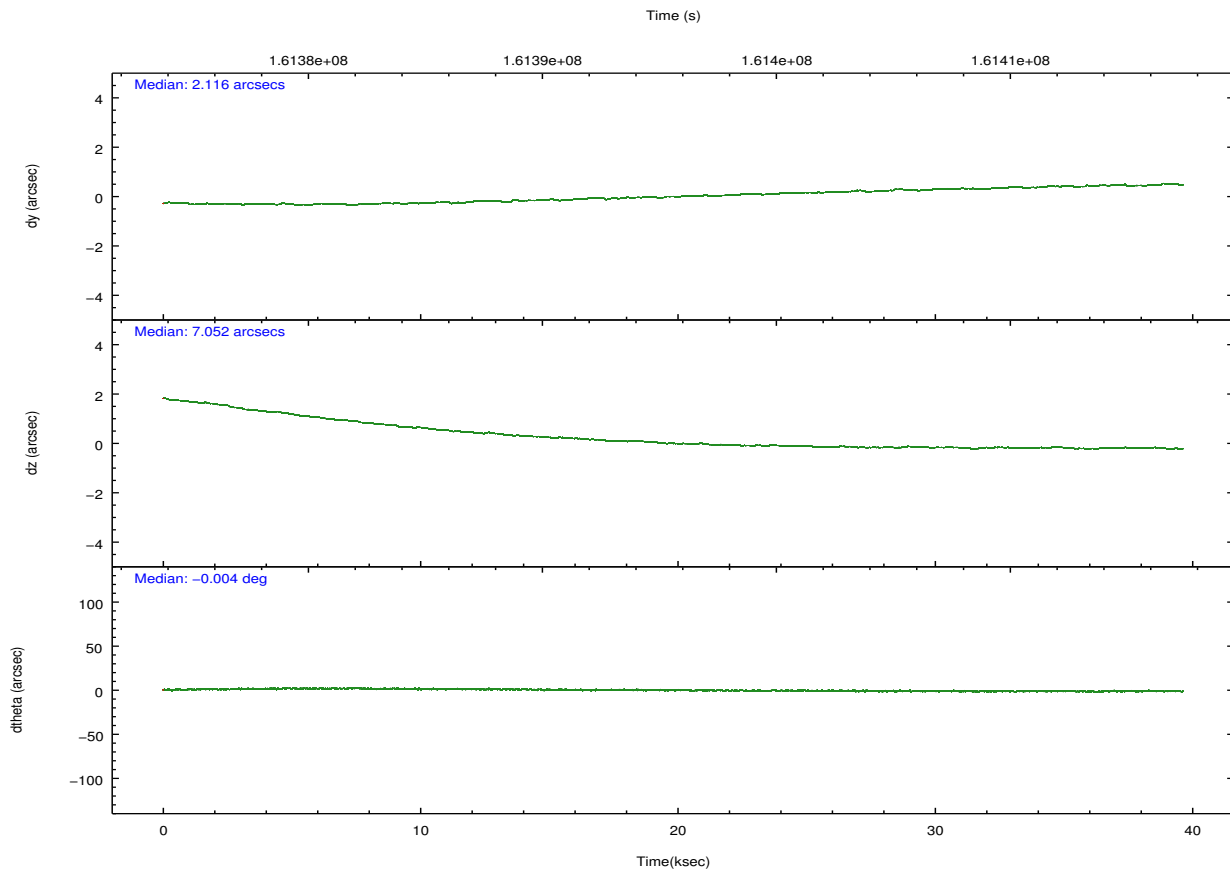
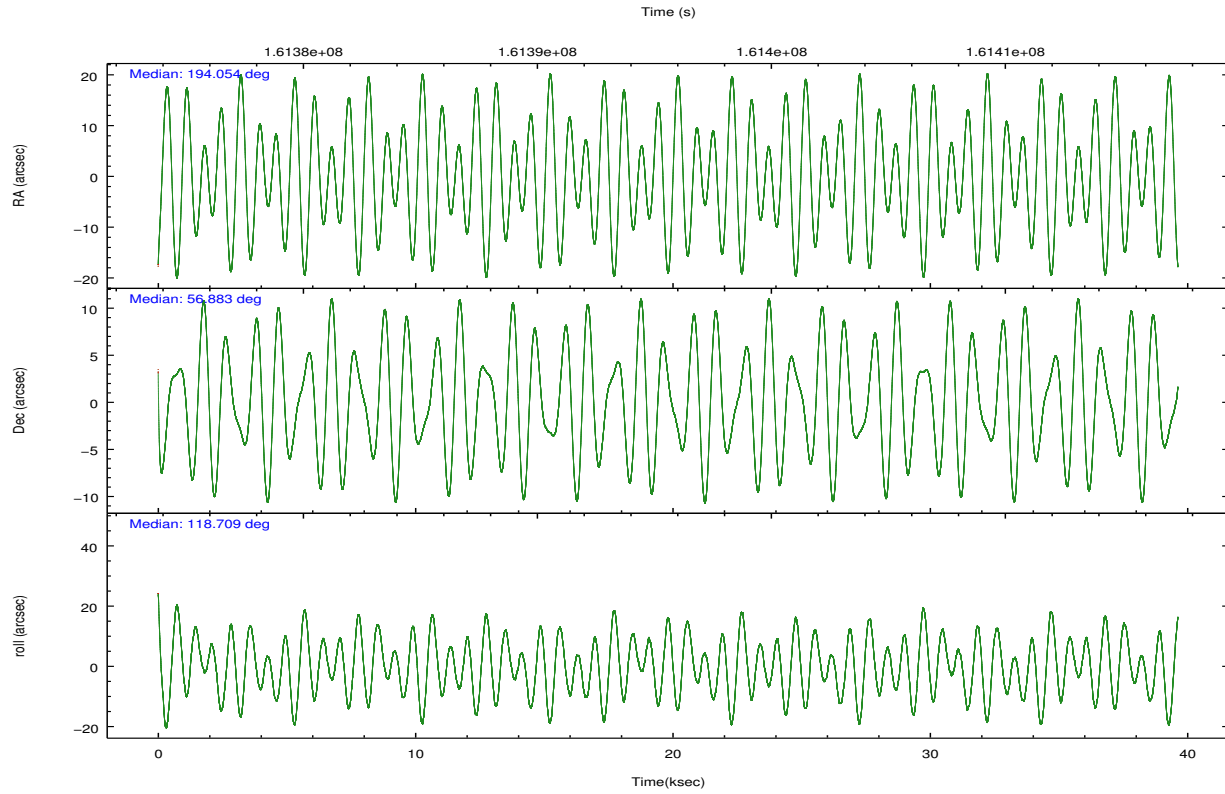
	ccd 6	ccd 7
grade 0 events	6614	8574
	4%	4%
grade 1 events	53	161
	0%	0%
grade 2 events	3083	15971
	2%	8%
grade 3 events	2108	7997
	1%	4%
grade 4 events	2026	7811
	1%	4%
grade 5 events	5899	16888
	4%	9%
grade 6 events	3258	38605
	2%	21%
grade 7 events	124342	83373
	84%	46%

2.2 Compared Parameters

Parameter	Planned	Actual	Parameter	Planned	Actual
Instrument	ACIS	ACIS	Obspar format version number	7	7
Detector	ACIS-67	ACIS-67	Obspar file type	PREDICTED	ACTUAL
Grating	NONE	NONE	Obspar update status	NONE	UPDATED
Data mode	VFAINT	VFAINT	Number of optional ACIS chips dropped	0	0
Observation mode	POINTING	POINTING	On-chip summing requested	N	N
[deg] Pointing RA	194.096449	194.0535365109456	Subarray requested	CUSTOM	1/2
[deg] Pointing Dec	56.869002	56.88280152822362	Subarray start row	257	257
[deg] Pointing Roll	118.525650	118.7182184320302	Subarray row count	512	512
[mm] SIM focus pos	-0.684267	-0.6828225247311905	Alternating exposures requested	N	N
[mm] SIM defocus	0	0.001444936568705701	[s] Primary exposure time	0.000000	1.6
[mm] SIM translation stage pos	-190.132523	-190.1400660498719			
[mm] SIM translation stage offset	0	0.00754346686406393			
[s] Observation start time (MET)	161375897.184000	161374633.48094			
Observation start date	2003-02-11T18:37:13	2003-02-11T18:17:13			
[s] Observation end time (MET)	161415397.184000	161416207.48268			
Observation end date	2003-02-12T05:35:33	2003-02-12T05:50:07			
Read mode	TIMED	TIMED			

2.3 Aspect



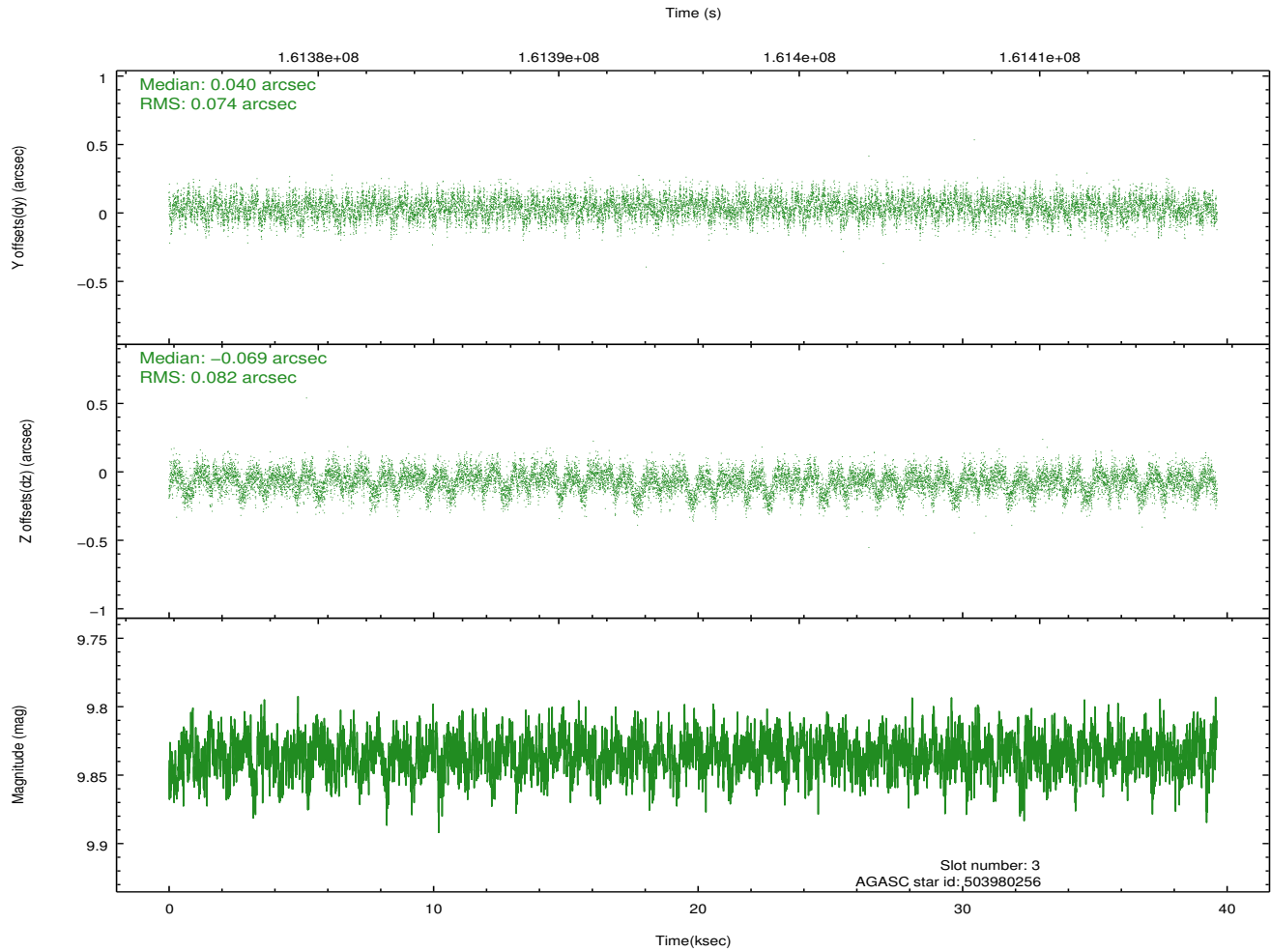
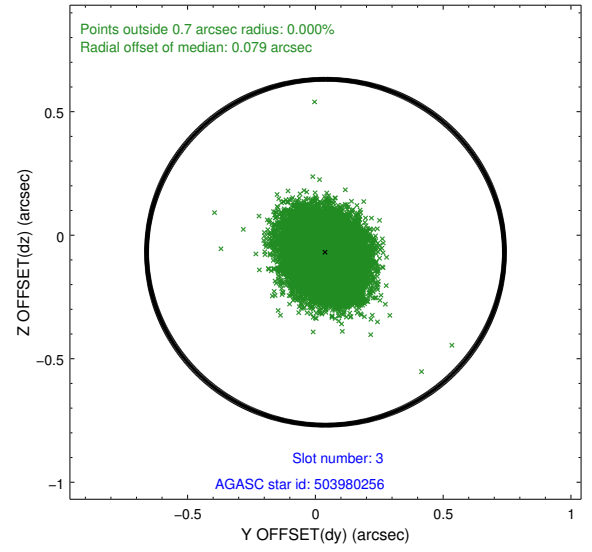
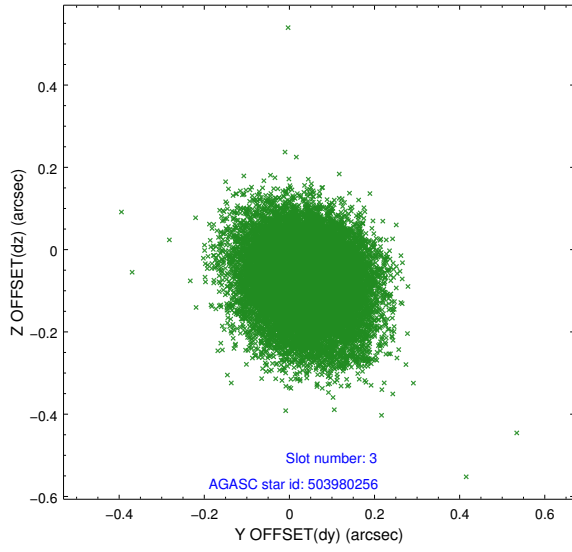


Slot Statistics

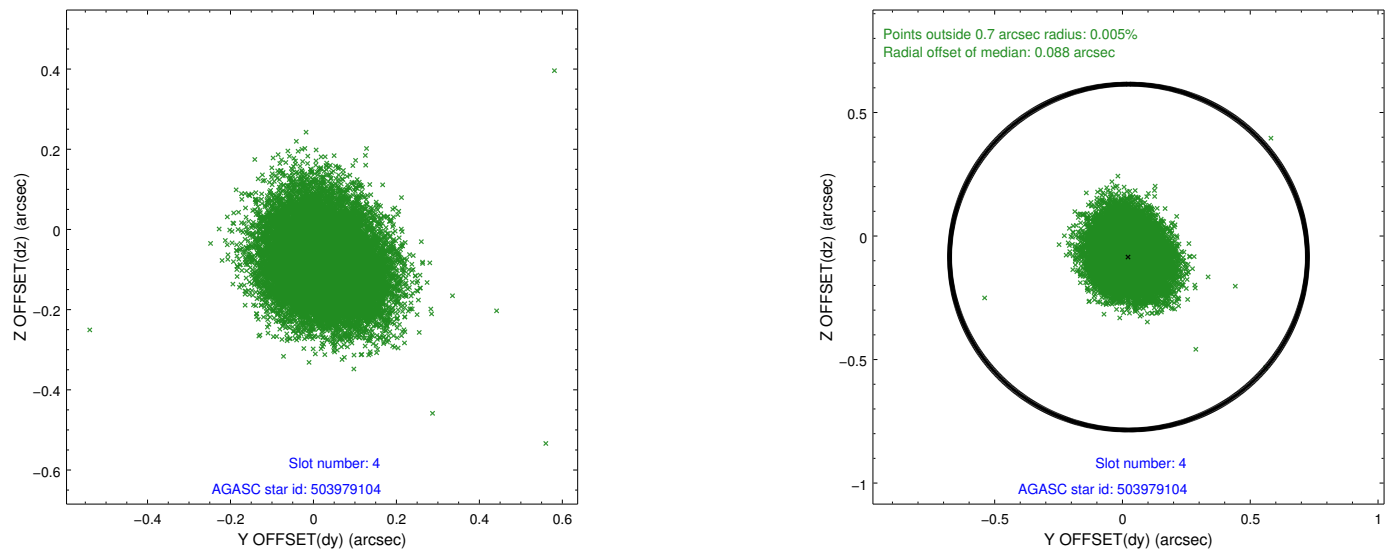
slot	status	id	mag	n_pts	med_dy	med_dz	dr1	dr2	ra	dec	mean_y	mean_z
0	FID	ACIS-S-2	7.11	9666	-0.033	-0.003	0.016	0.027	0.000000	0.000000	-754.79	-1728.53
1	FID	ACIS-S-4	7.20	9665	-0.008	0.017	0.013	0.026	0.000000	0.000000	2158.50	179.97
2	FID	ACIS-S-5	7.24	9664	0.009	-0.004	0.014	0.022	0.000000	0.000000	-1807.57	173.62
3	GUIDE	503980256	9.84	19322	0.040	-0.069	0.118	0.190	193.427147	56.429056	-749.60	1923.83
4	GUIDE	503979104	9.84	19309	0.024	-0.085	0.110	0.181	194.089330	56.607844	-819.29	461.32
5	GUIDE	503980752	9.57	19325	-0.030	0.087	0.125	0.197	195.429177	56.932049	-1027.78	-2420.40
6	GUIDE	504371944	8.89	19319	-0.081	0.061	0.128	0.196	194.110371	57.600269	2300.48	-1280.40
7	GUIDE	504368776	7.98	19326	0.045	0.005	0.088	0.145	194.317087	57.691724	2400.82	-1787.37

2.4 Star Slots

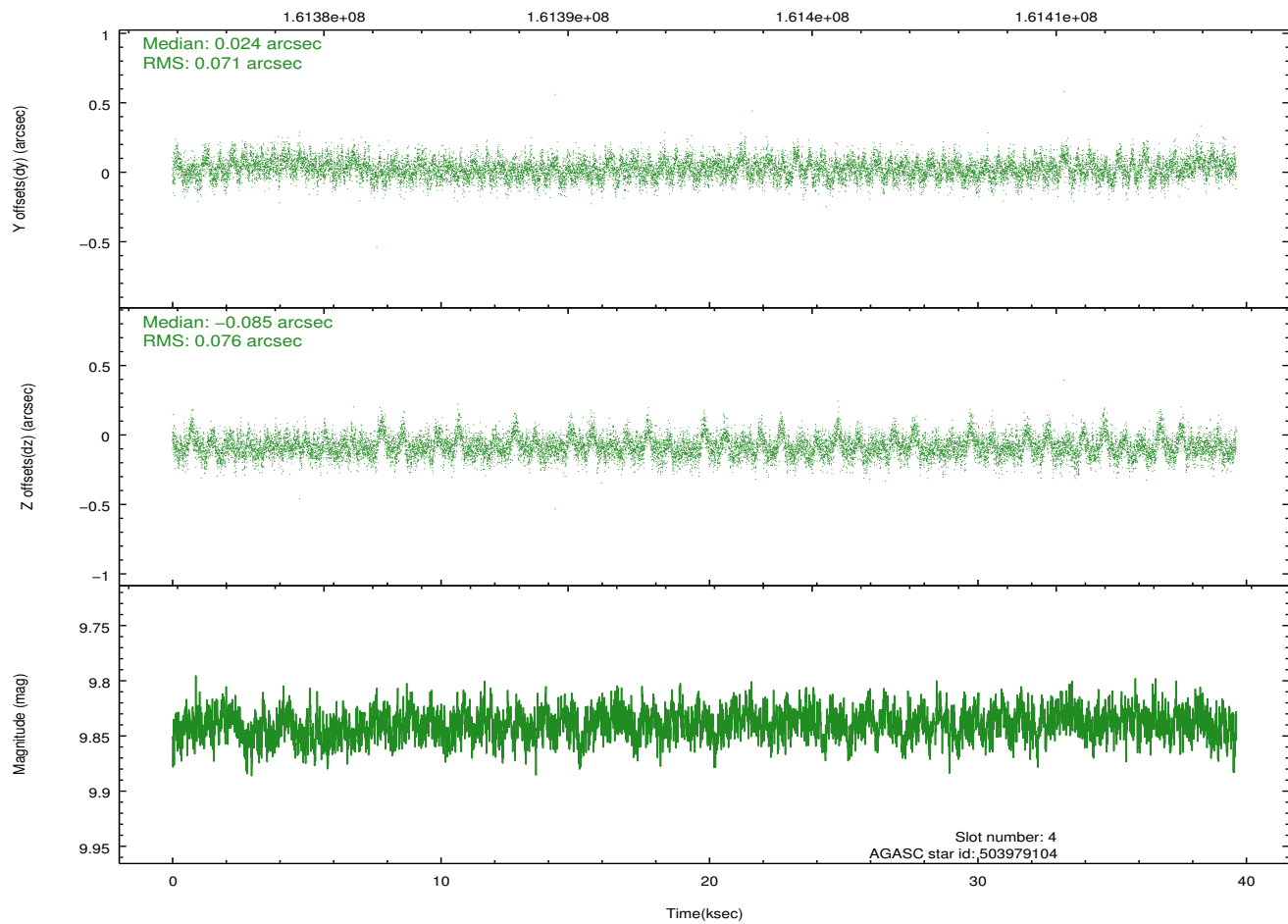
2.4.1 Slot 3



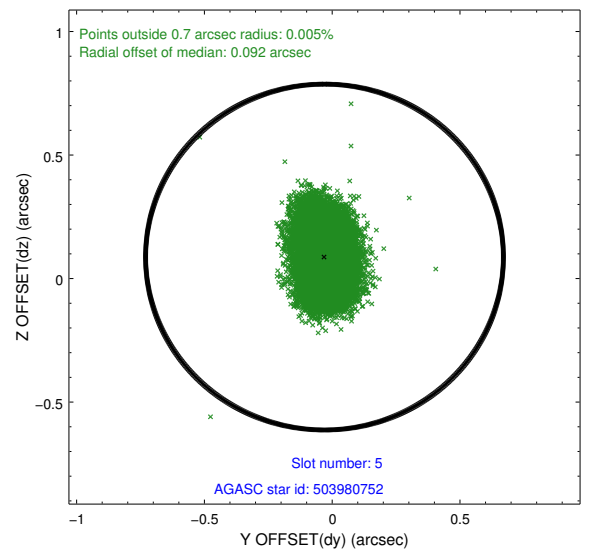
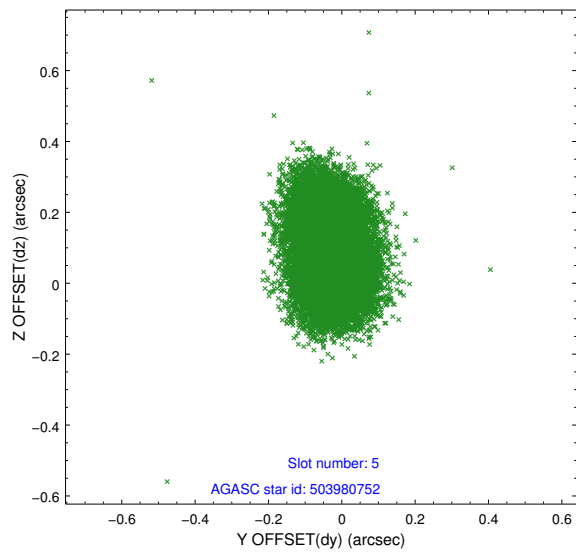
2.4.2 Slot 4



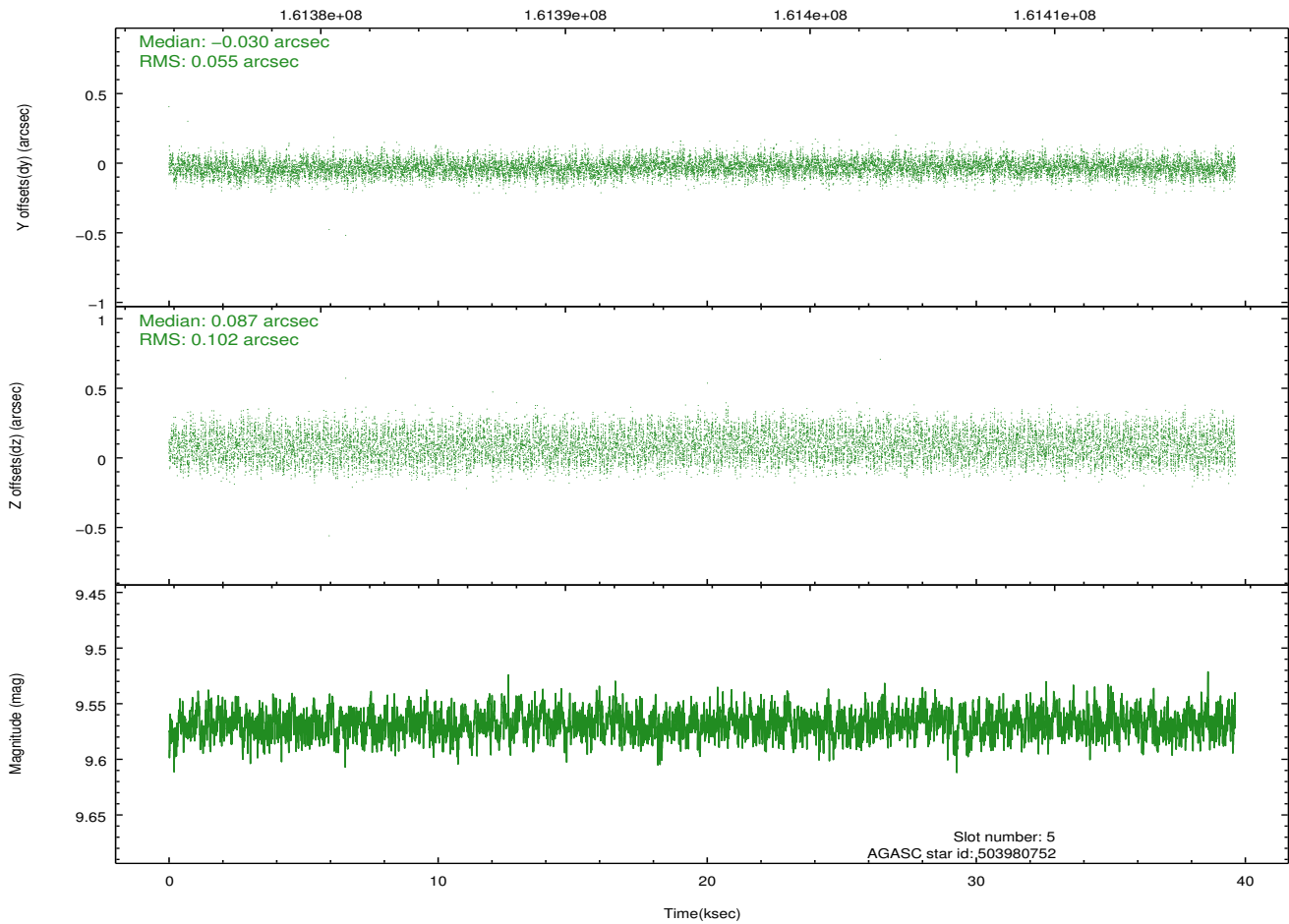
Time (s)



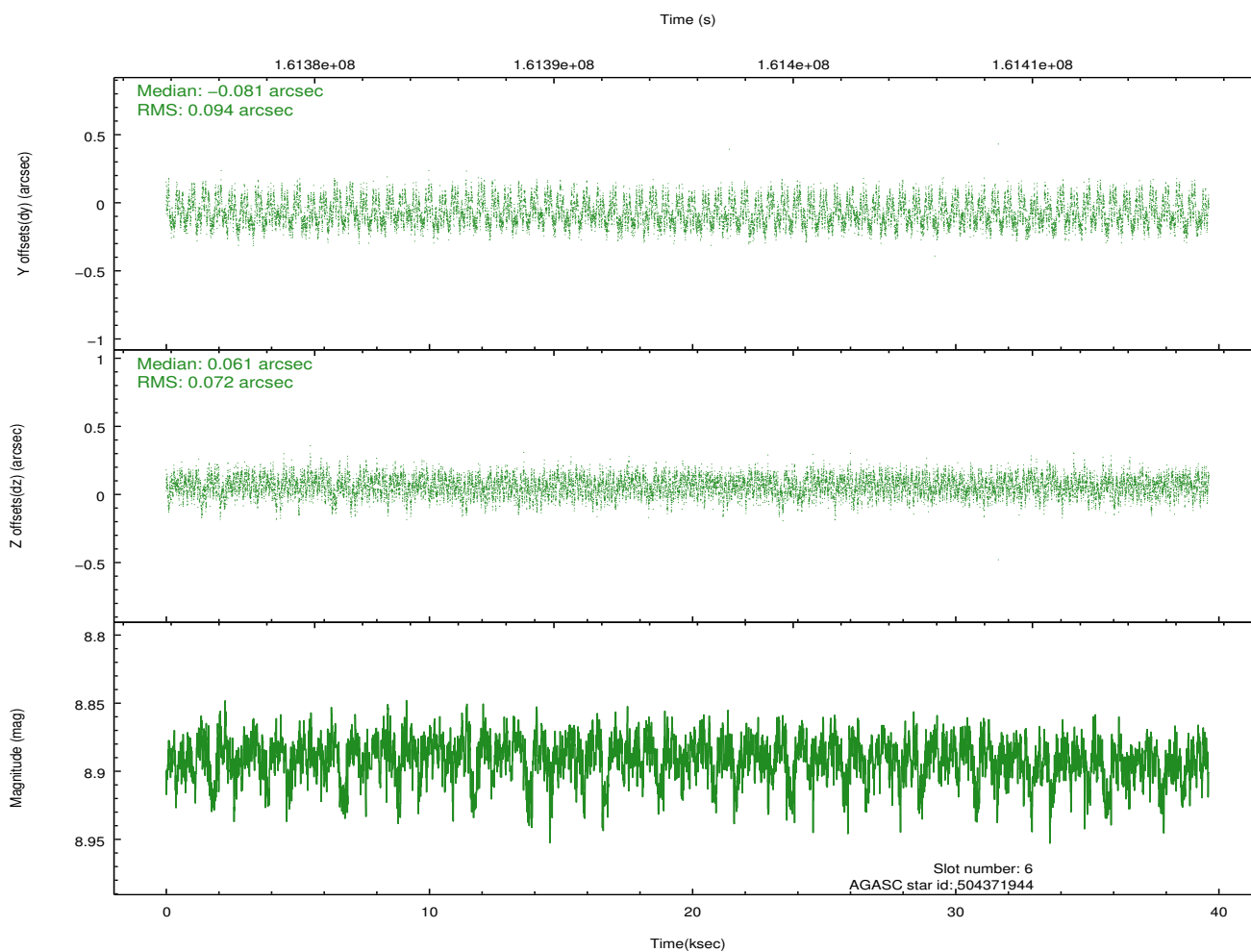
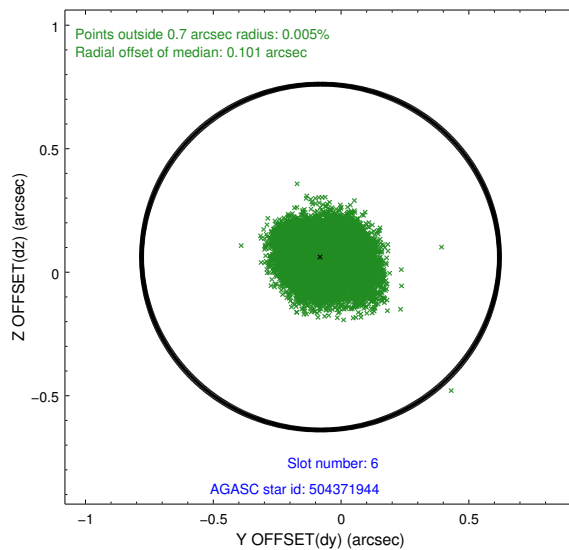
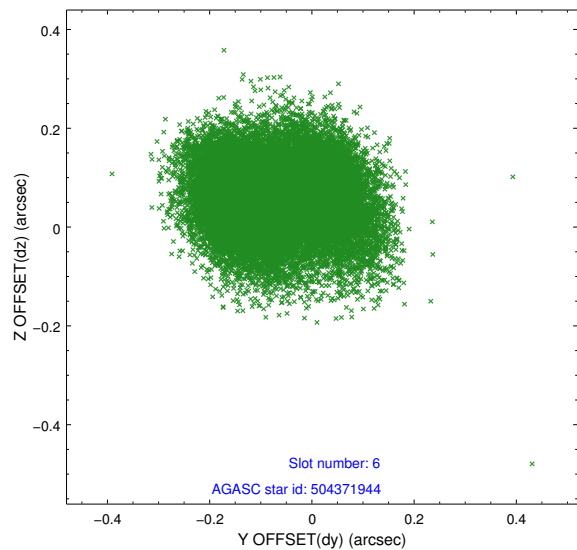
2.4.3 Slot 5



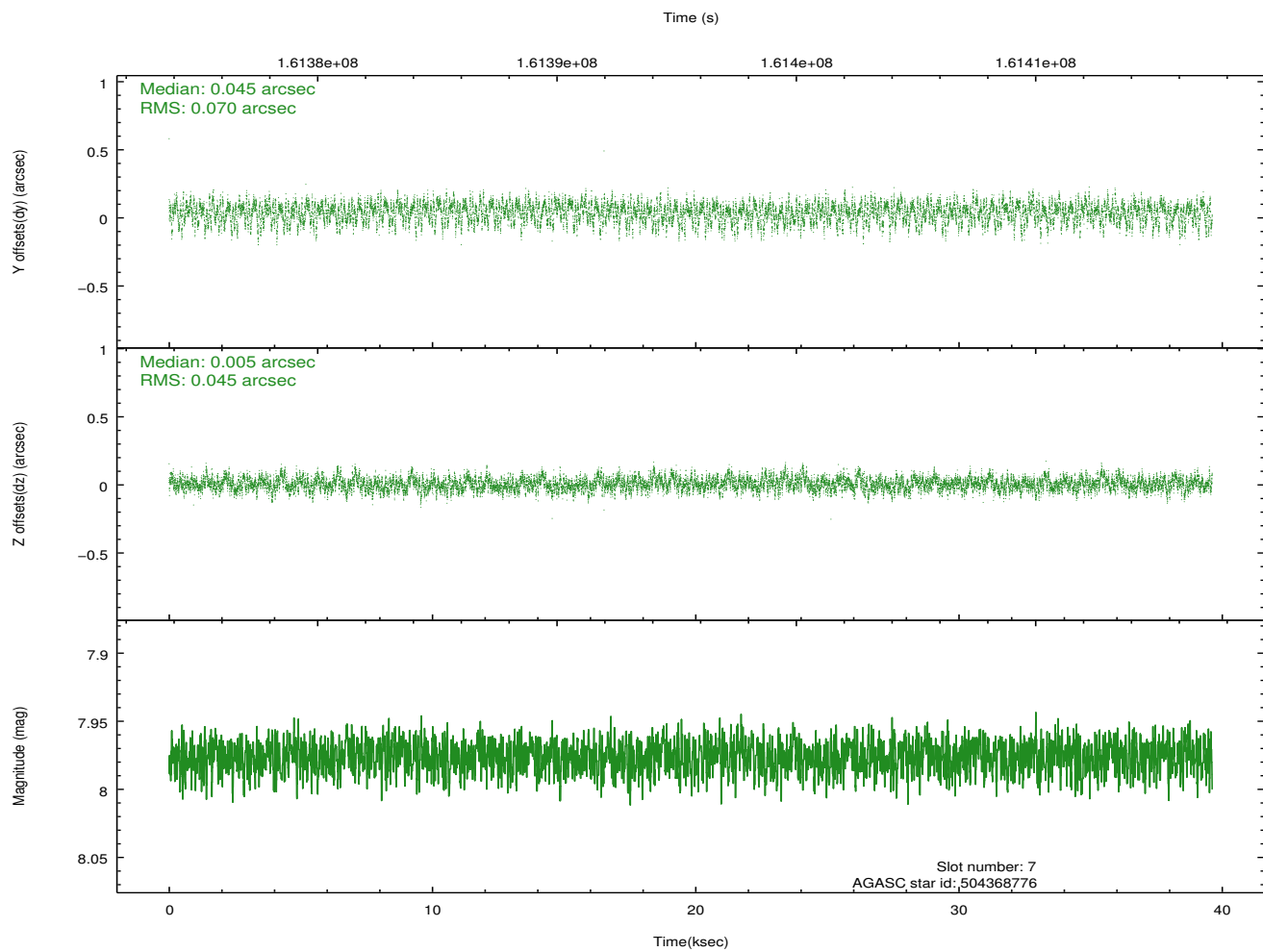
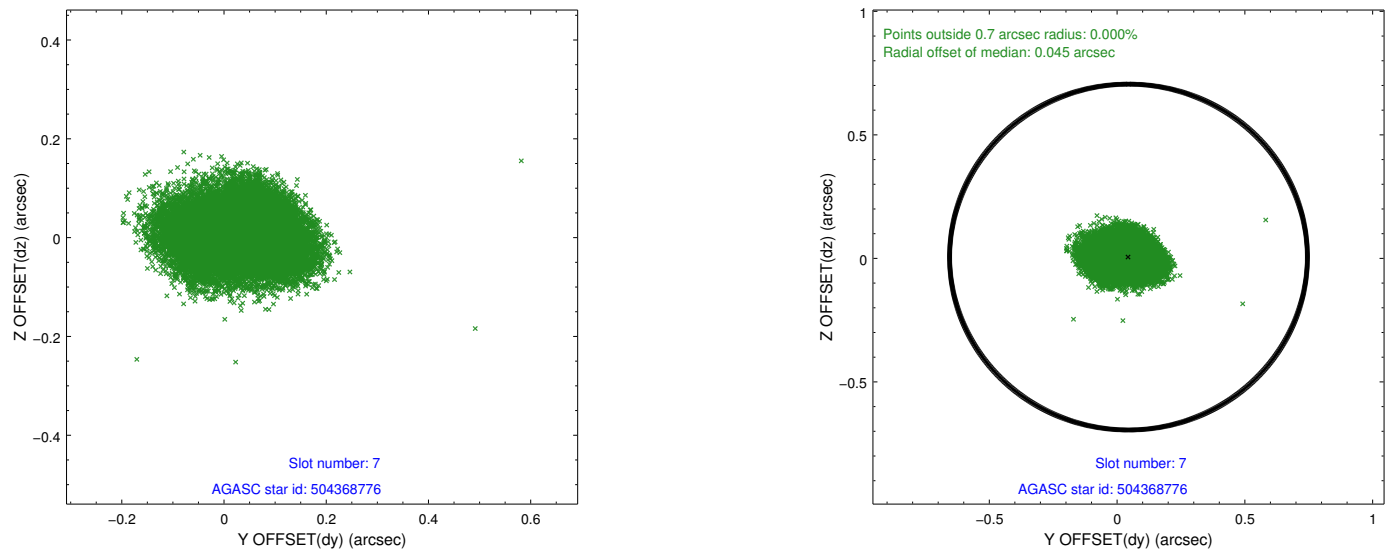
Time (s)



2.4.4 Slot 6

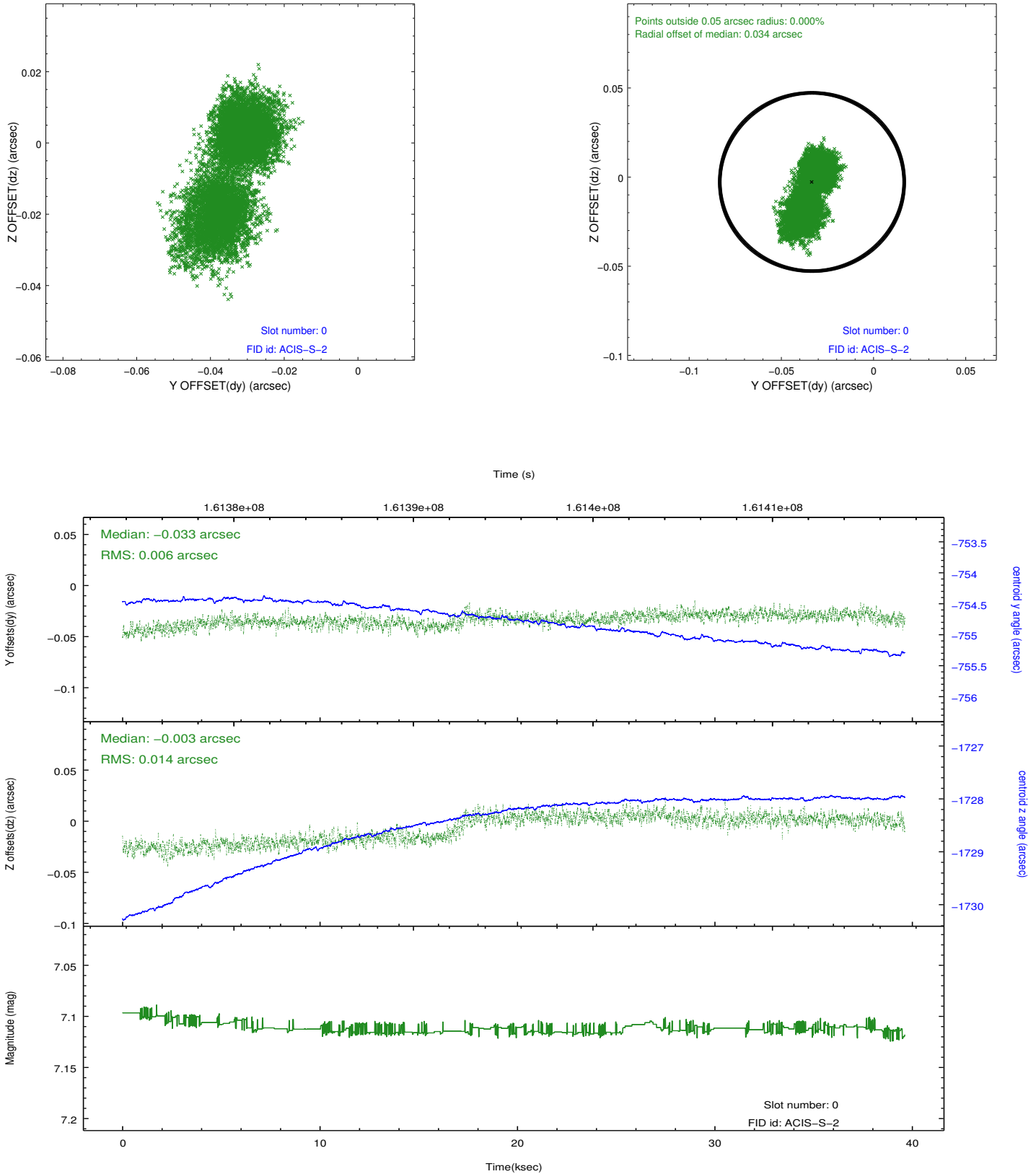


2.4.5 Slot 7

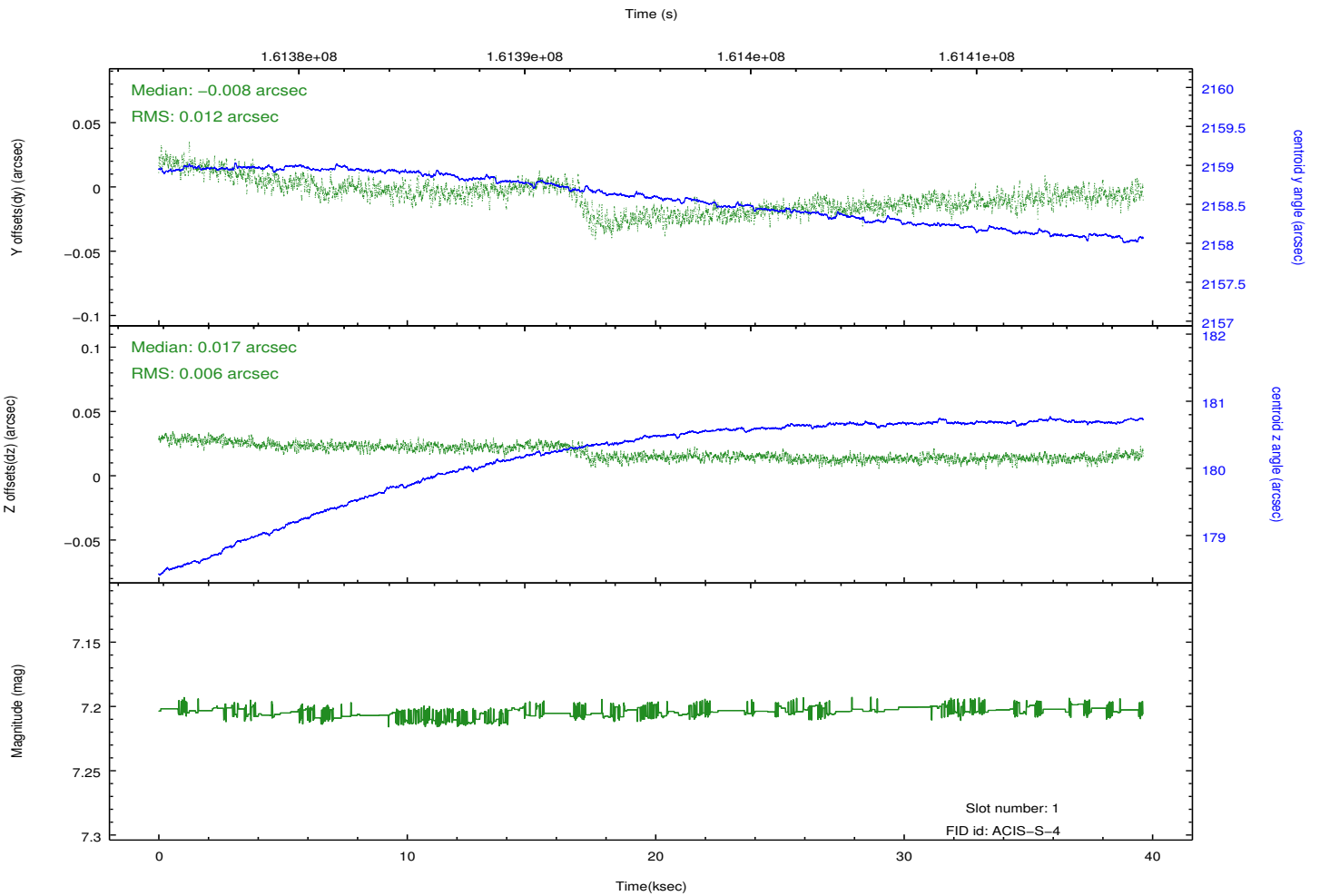
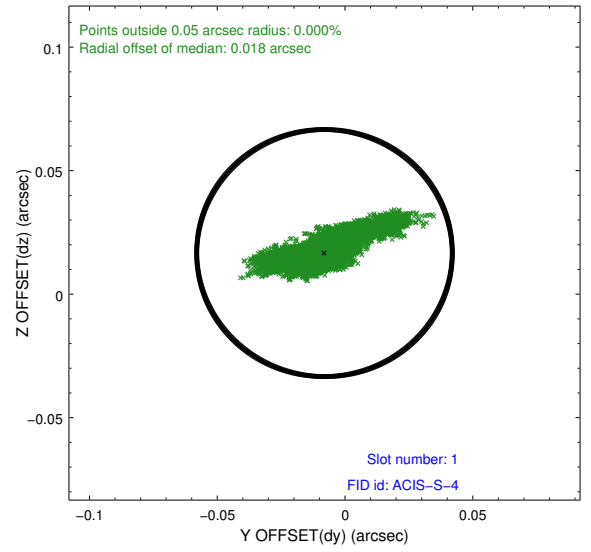
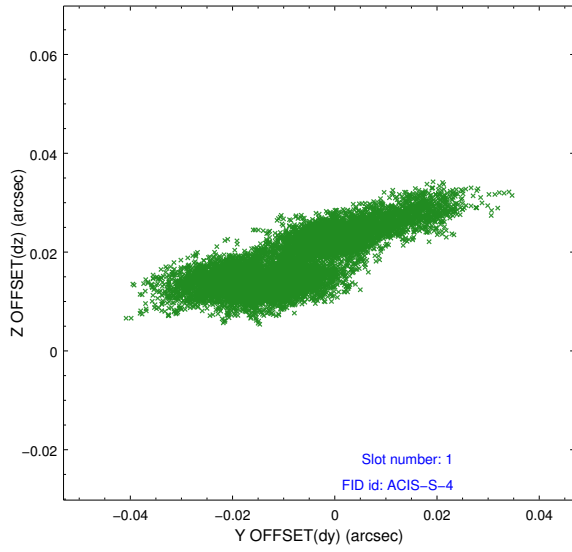


2.5 FID Slots

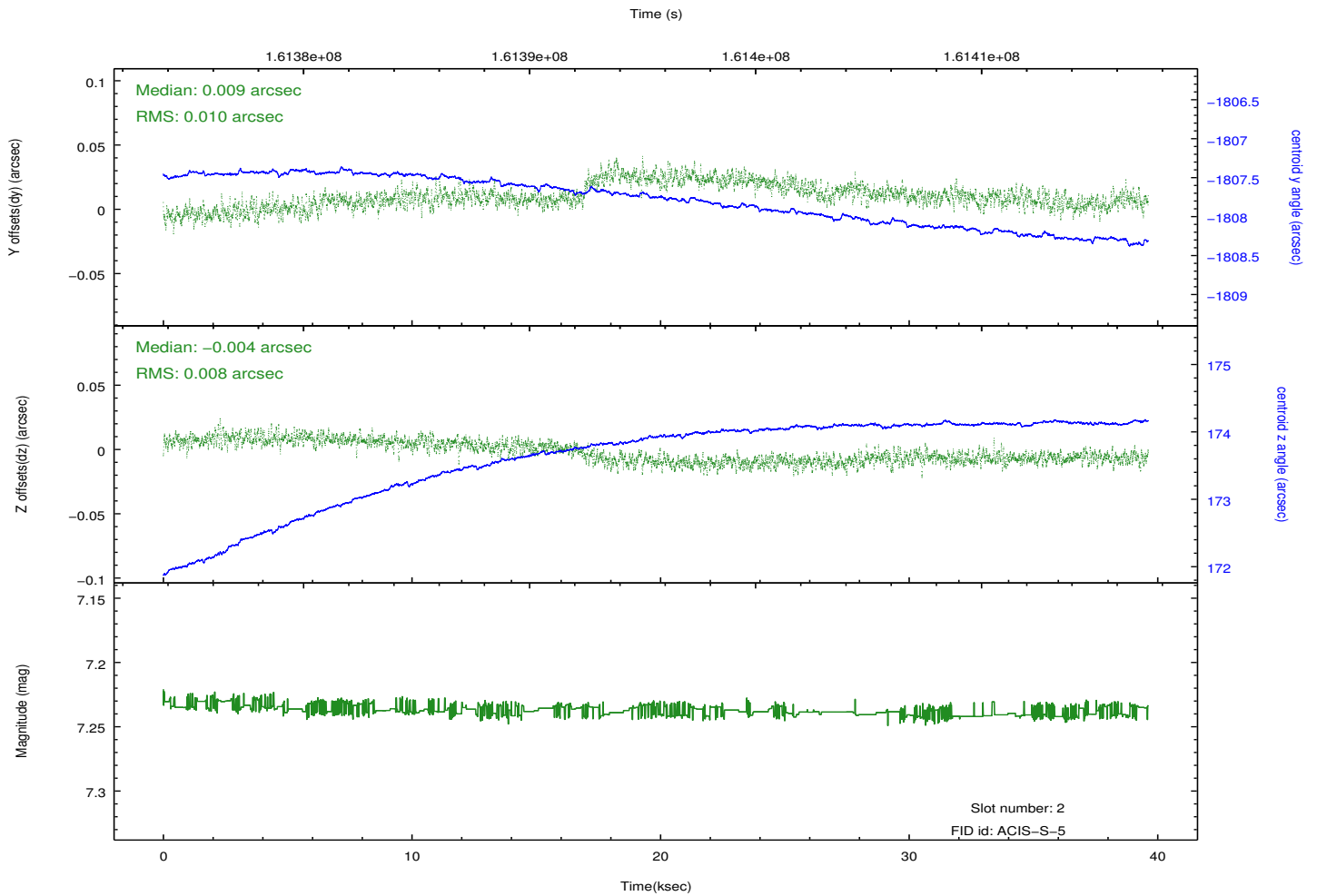
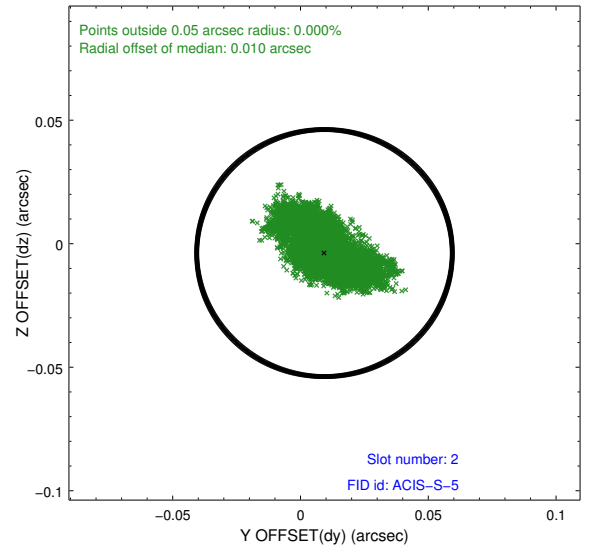
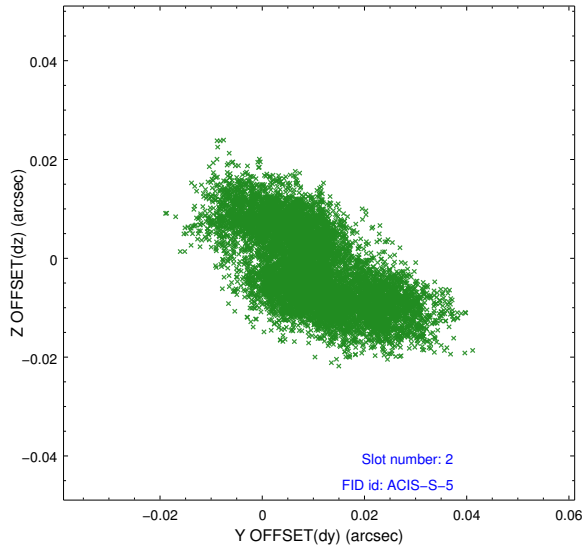
2.5.1 Slot 0



2.5.2 Slot 1



2.5.3 Slot 2



A Summary

A.1 Status

V&V Scientist	Jen Lauer
V&V Date (YYYY-MM-DD)	2012.11.05
V&V Edition	1
V&V Disposition and Status	OK
V&V Charge Time	39.624

A.2 Comments