

# V&V Reference Report

## L2 ASCDS Version : 8.4.5

Observation 4159 - L2 Version 4  
Chandra X-Ray Center

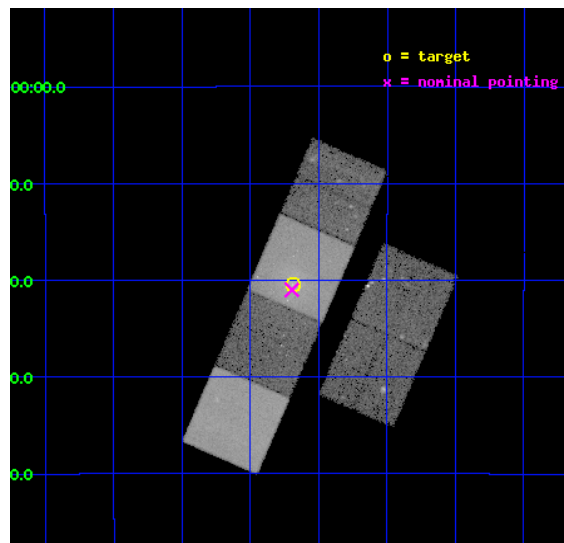
L2 Processing Date : Oct 17 2012

## Contents

<b>1</b>	<b>Front</b>	<b>2</b>
<b>2</b>	<b>OBI</b>	<b>3</b>
2.1	OBI . . . . .	3
2.1.1	Images . . . . .	3
2.1.2	Bias . . . . .	3
2.1.3	Parameters . . . . .	4
2.1.4	Events . . . . .	4
2.2	Compared Parameters . . . . .	5
2.3	Aspect . . . . .	6
2.4	Star Slots . . . . .	9
2.4.1	Slot 3 . . . . .	9
2.4.2	Slot 4 . . . . .	10
2.4.3	Slot 5 . . . . .	11
2.4.4	Slot 6 . . . . .	12
2.4.5	Slot 7 . . . . .	13
2.5	FID Slots . . . . .	14
2.5.1	Slot 0 . . . . .	14
2.5.2	Slot 1 . . . . .	15
2.5.3	Slot 2 . . . . .	16
<b>A</b>	<b>Summary</b>	<b>17</b>
A.1	Status . . . . .	17
A.2	Comments . . . . .	17

# 1 Front

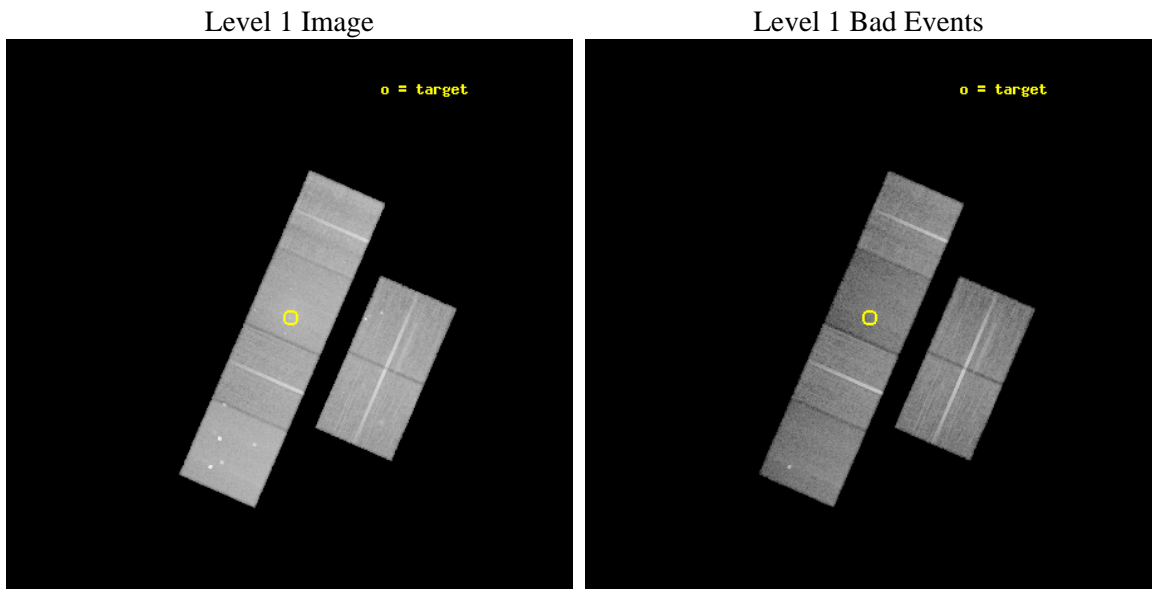
seq_num	700838	Sequence number
obs_id	4159	Observation id
title	JET DISRUPTION IN WAT RADIO GALAXIES: PROBING THE DYNAMICS OF GALAXY CLUSTERS	Proposal title
observer	Dr Irini Sakelliou	Principal investigator
object	2236-176	Source name
dtcycle	0	&#160
cycle	P	events from which exps? Prim/Second/Both
ra_targ	339.796667	Observer's specified target RA [deg]
dec_targ	-17.340611	Observer's specified target Dec [deg]
ra_nom	339.79900930065	Nominal RA [deg]
dec_nom	-17.350018314153	Nominal Dec [deg]
roll_nom	293.46118731346	Nominal Roll [deg]
revision	4	Processing version of data
ontime	39737.417334616	Sum of GTIs [s]
livetime	39234.238229325	Livetime [s]
ontime2	39734.21741432	Sum of GTIs [s]
ontime3	39734.053274244	Sum of GTIs [s]
ontime5	39737.376294613	Sum of GTIs [s]
ontime6	39737.33525461	Sum of GTIs [s]
ontime7	39737.417334616	Sum of GTIs [s]
ontime8	39737.253174633	Sum of GTIs [s]
l2events	298844	Number of level 2 events



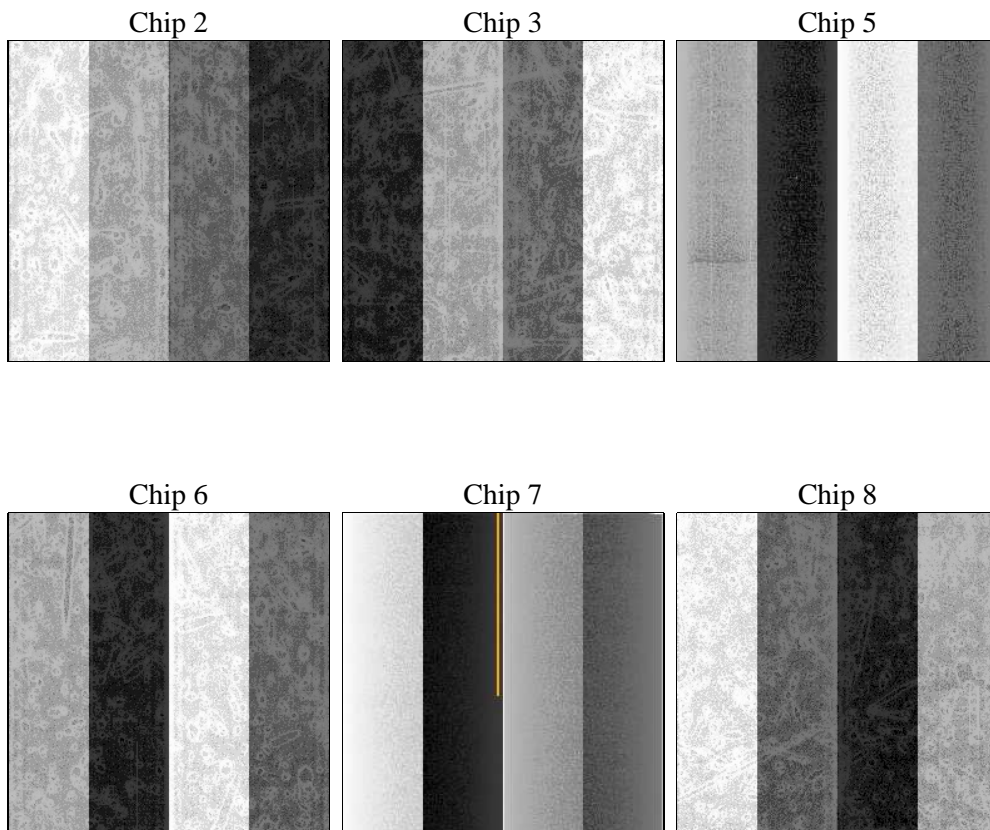
## 2 OBI

### 2.1 OBI

#### 2.1.1 Images



#### 2.1.2 Bias



### 2.1.3 Parameters

obi_num	0	Obi number	sched_exp_time	39800.000000	[s] Scheduled observation exposure time
ascdsver	8.4.5	Processing system revision	ontime	39737.417334616	Sum of GTIs [s]
caldbver	4.5.2	&#160	ontime2	39734.21741432	Sum of GTIs [s]
date	2012-10-17T13:54:44	Date and time of file creation	ontime3	39734.053274244	Sum of GTIs [s]
revision	4	Processing version of data	ontime5	39737.376294613	Sum of GTIs [s]
			ontime6	39737.33525461	Sum of GTIs [s]
			ontime7	39737.417334616	Sum of GTIs [s]
			ontime8	39737.253174633	Sum of GTIs [s]
			l1events	1292187	Number of level 1 events

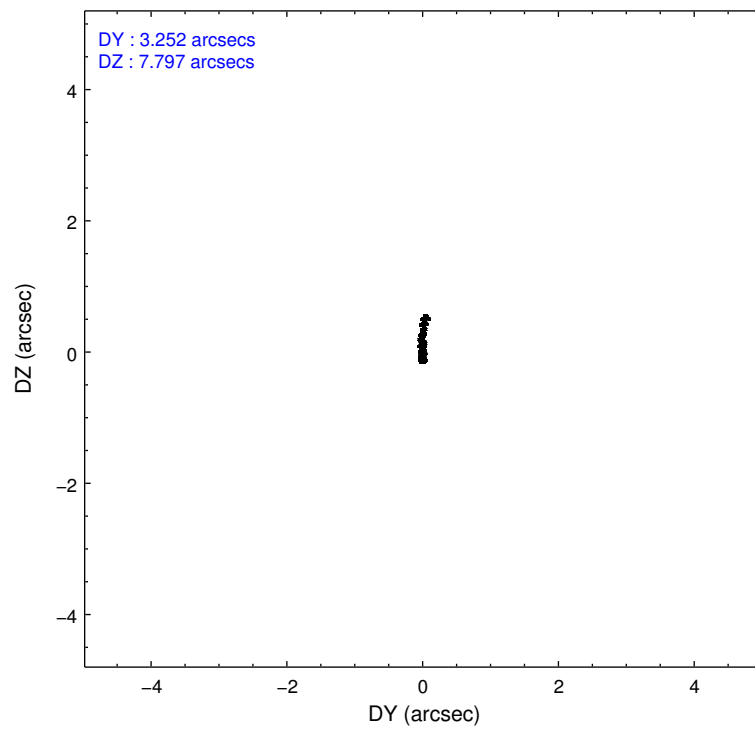
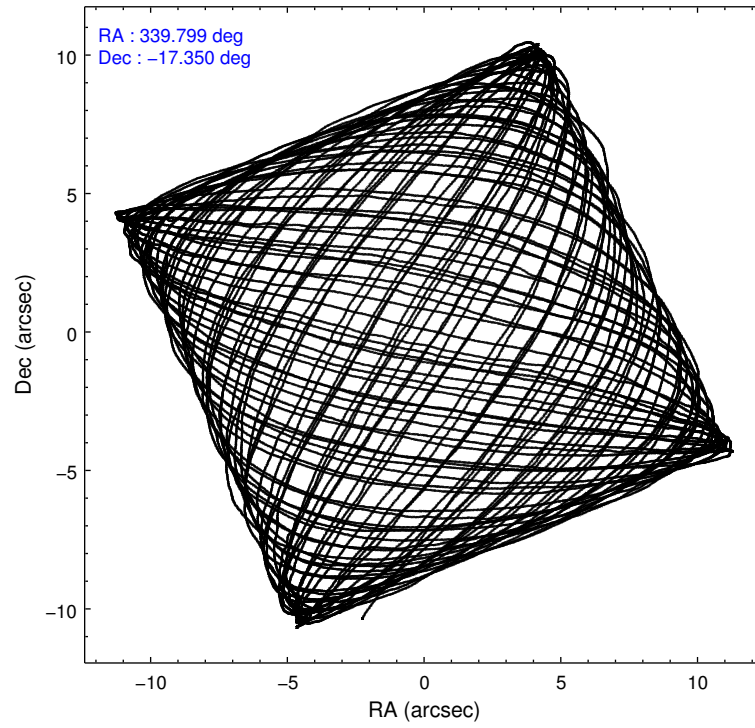
### 2.1.4 Events

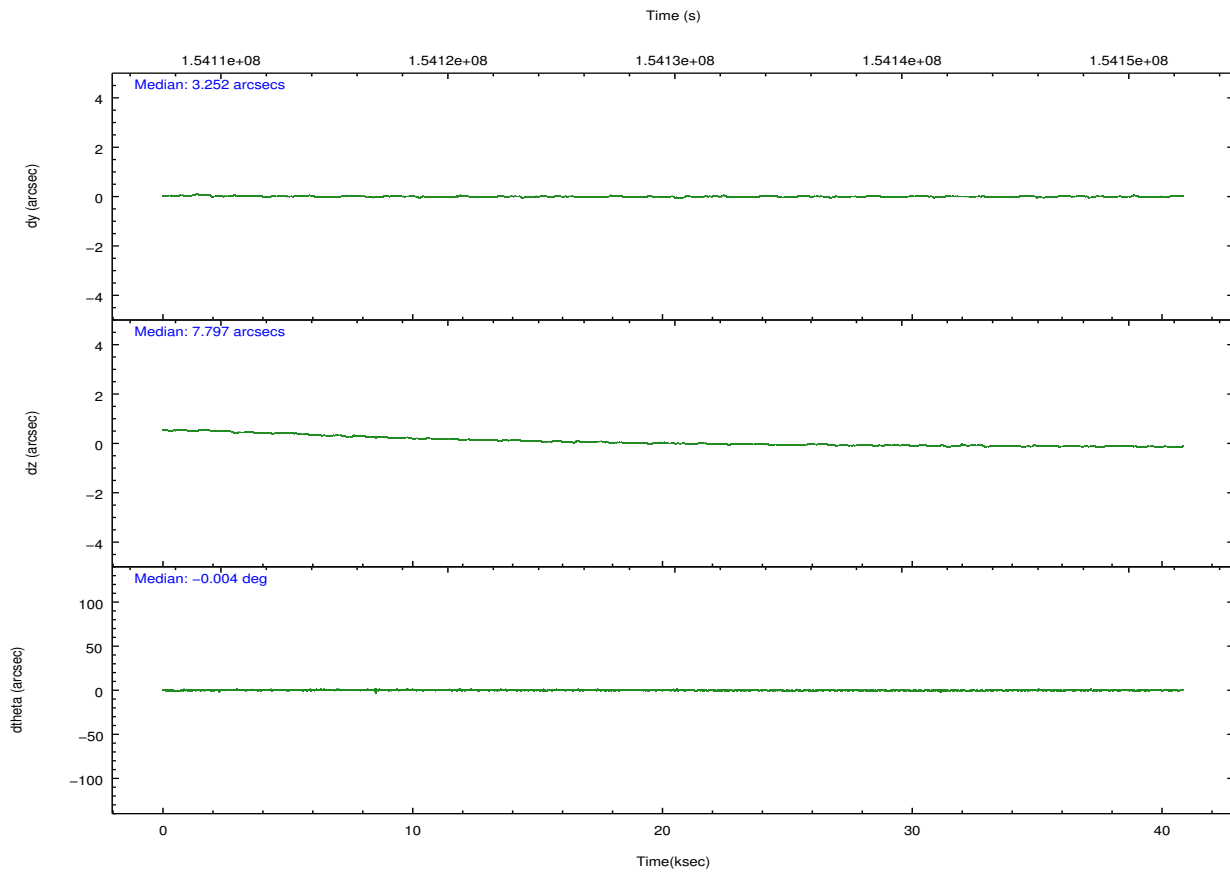
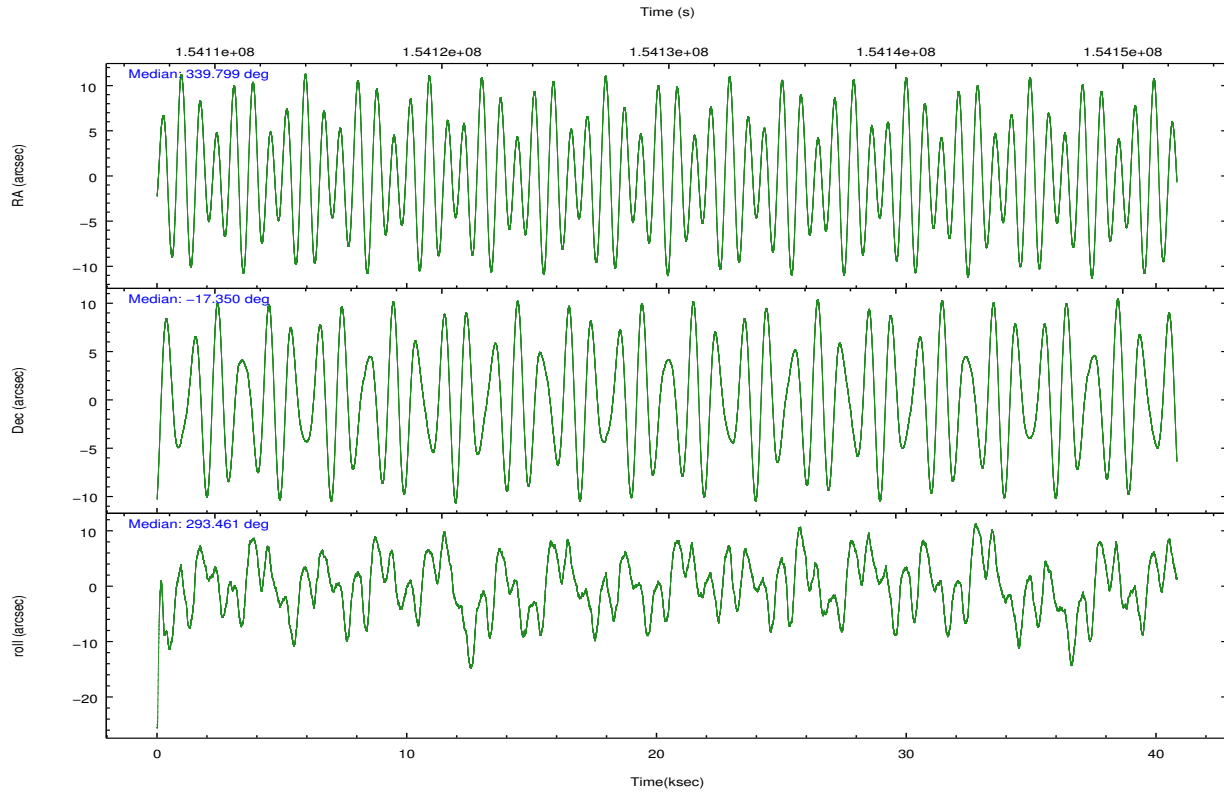
	ccd 2	ccd 3	ccd 5	ccd 6	ccd 7	ccd 8		ccd 2	ccd 3	ccd 5	ccd 6	ccd 7	ccd 8
level 1 events	201622	189147	255360	191001	223057	232000	grade 0 events	7666	8883	16210	8965	15167	16963
rejected events	181993	168408	127109	169100	110727	179668		3%	4%	6%	4%	6%	7%
rejected %	90%	89%	49%	88%	49%	77%	grade 1 events	104	104	266	81	181	144
								0%	0%	0%	0%	0%	0%
							grade 2 events	4322	3978	37343	4244	23714	10982
								2%	2%	14%	2%	10%	4%
							grade 3 events	2096	2252	5820	2297	11042	5786
								1%	1%	2%	1%	4%	2%
							grade 4 events	2142	2119	5693	2220	11144	5401
								1%	1%	2%	1%	4%	2%
							grade 5 events	6203	7111	20830	7493	21614	10083
								3%	3%	8%	3%	9%	4%
							grade 6 events	3404	3508	63191	4178	51268	13201
								1%	1%	24%	2%	22%	5%
							grade 7 events	175685	161192	106007	161523	88927	169440
								87%	85%	41%	84%	39%	73%

## 2.2 Compared Parameters

Parameter	Planned	Actual	Parameter	Planned	Actual
Instrument	ACIS	ACIS	Obspar format version number	7	7
Detector	ACIS-235678	ACIS-235678	Obspar file type	PREDICTED	ACTUAL
Grating	NONE	NONE	Obspar update status	NONE	UPDATED
Data mode	VFAINT	VFAINT	Number of optional ACIS chips dropped	0	0
Observation mode	POINTING	POINTING	On-chip summing requested	N	N
[deg] Pointing RA	339.775854	339.7990093006494	Subarray requested	NONE	NONE
[deg] Pointing Dec	-17.334102	-17.35001831415299	Alternating exposures requested	N	N
[deg] Pointing Roll	293.297653	293.4611873134629	[s] Primary exposure time	0.000000	3.2
[mm] SIM focus pos	-0.684267	-0.6828225247311905			
[mm] SIM defocus	0	0.001444936568705701			
[mm] SIM translation stage pos	-190.132523	-190.1425803651734			
[mm] SIM translation stage offset	0	0.01005778216563158			
[s] Observation start time (MET)	154110544.184000	154109157.96472			
Observation start date	2002-11-19T16:28:00	2002-11-19T16:05:57			
[s] Observation end time (MET)	154150344.184000	154150812.42896			
Observation end date	2002-11-20T03:31:20	2002-11-20T03:40:12			
Read mode	TIMED	TIMED			

## 2.3 Aspect





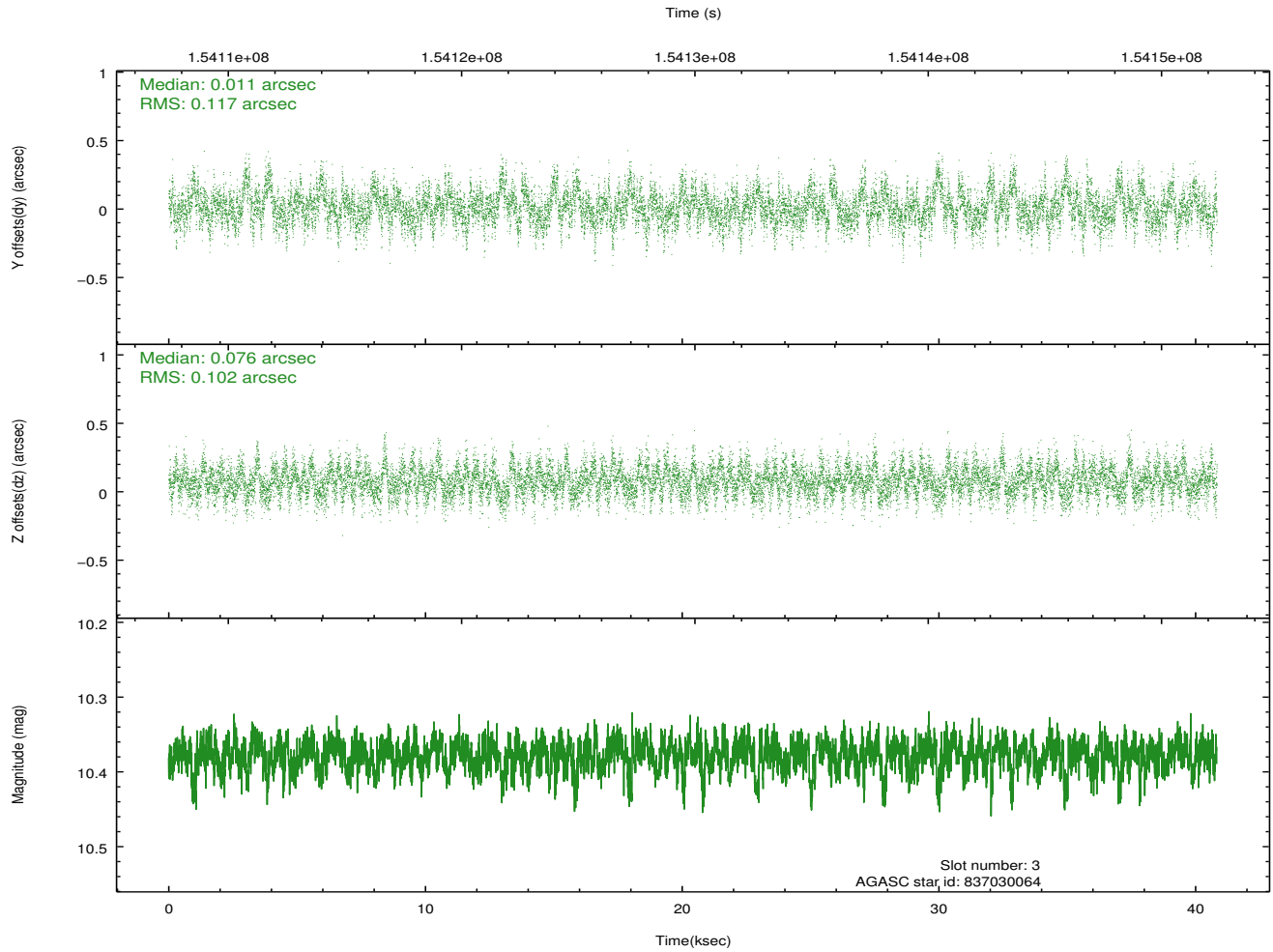
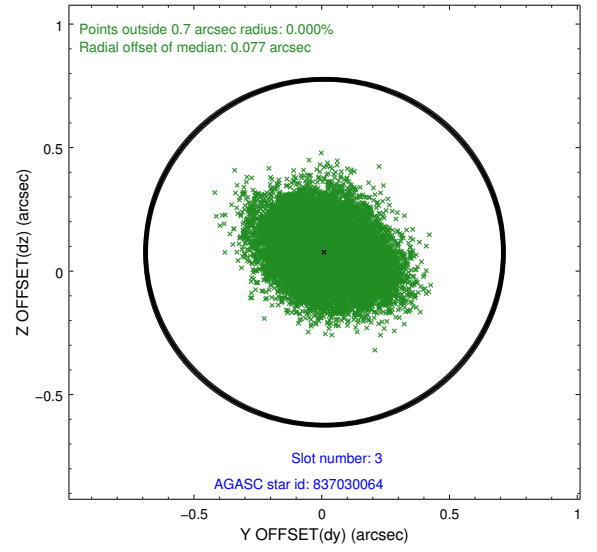
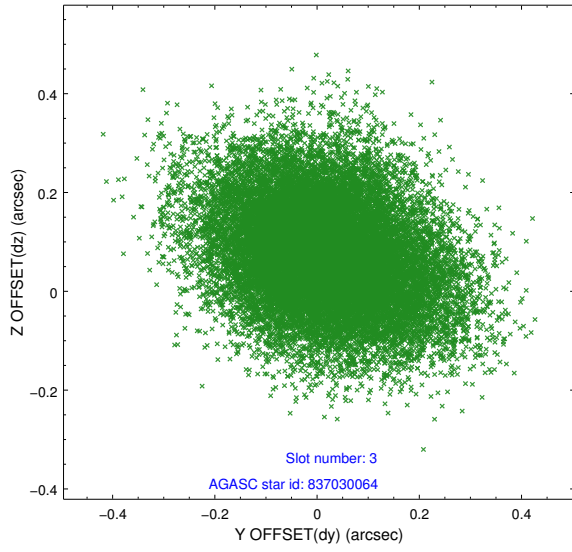
### Slot Statistics

slot	status	id	mag	n_pts	med_dy	med_dz	dr1	dr2	ra	dec	mean_y	mean_z
0	FID	ACIS-S-2	7.11	9957	-0.011	-0.011	0.007	0.012	0.000000	0.000000	-755.93	-1729.02
1	FID	ACIS-S-4	7.20	9958	0.011	0.009	0.006	0.010	0.000000	0.000000	2157.38	179.45
2	FID	ACIS-S-5	7.24	9959	-0.031	0.011	0.007	0.011	0.000000	0.000000	-1808.76	173.17
3	GUIDE	837030064	10.38	19901	0.011	0.076	0.163	0.272	340.264252	-17.326769	641.96	1551.32
4	GUIDE	837035552	9.58	19909	-0.147	-0.067	0.115	0.188	339.376458	-16.830760	-2207.02	-547.93
5	GUIDE	837420616	8.99	19912	0.160	-0.144	0.081	0.138	340.015419	-17.807878	1892.28	79.36
6	BAD	837421240	10.39	18341	-0.098	-0.033	0.192	0.325	339.594832	-18.105597	2307.85	-1667.53
7	GUIDE	837421736	9.46	19909	0.085	0.162	0.146	0.383	339.991886	-17.959175	2360.34	-210.52

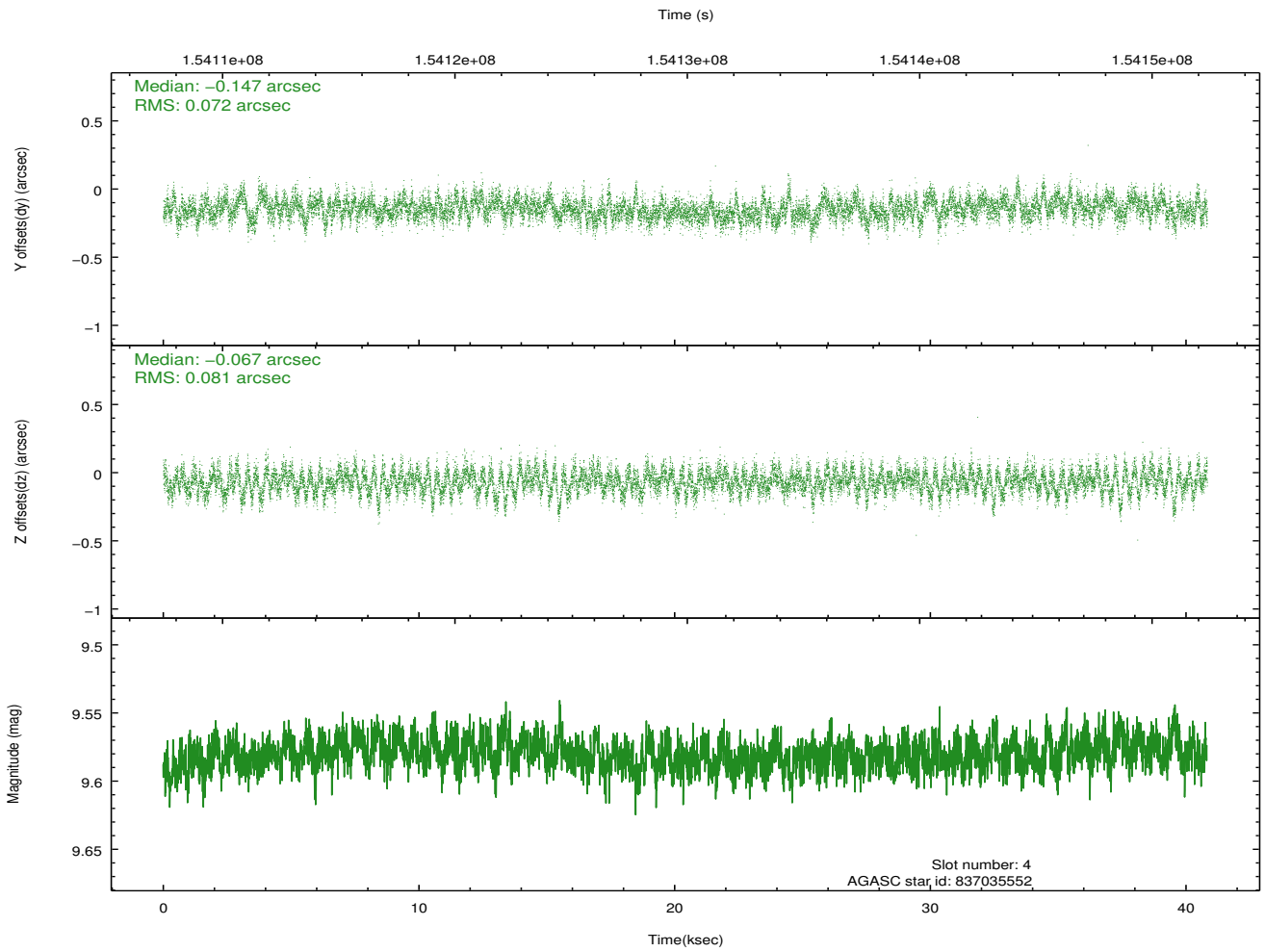
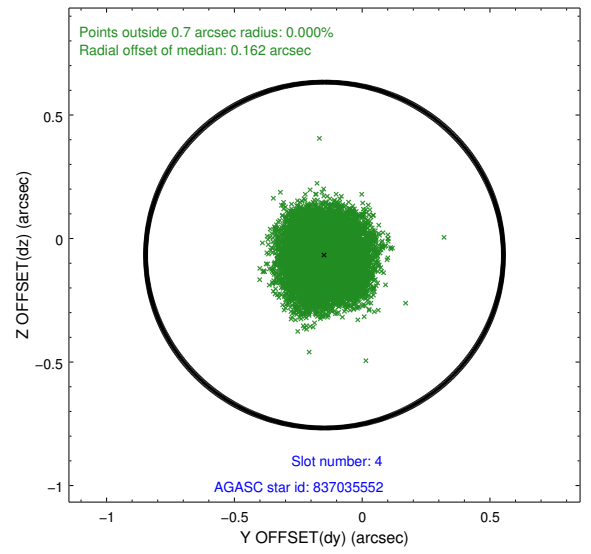
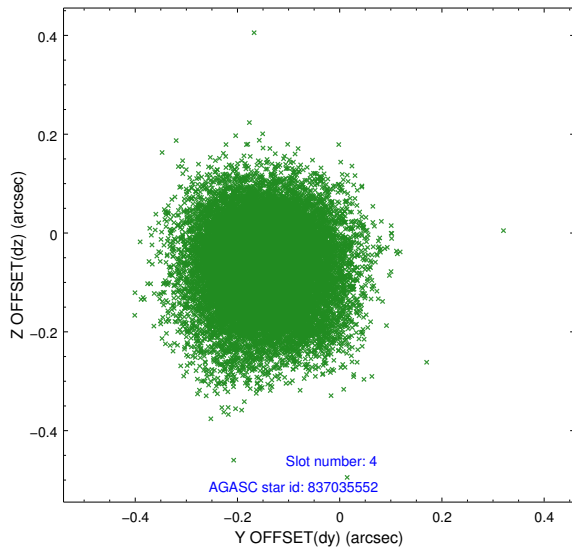
∞

## 2.4 Star Slots

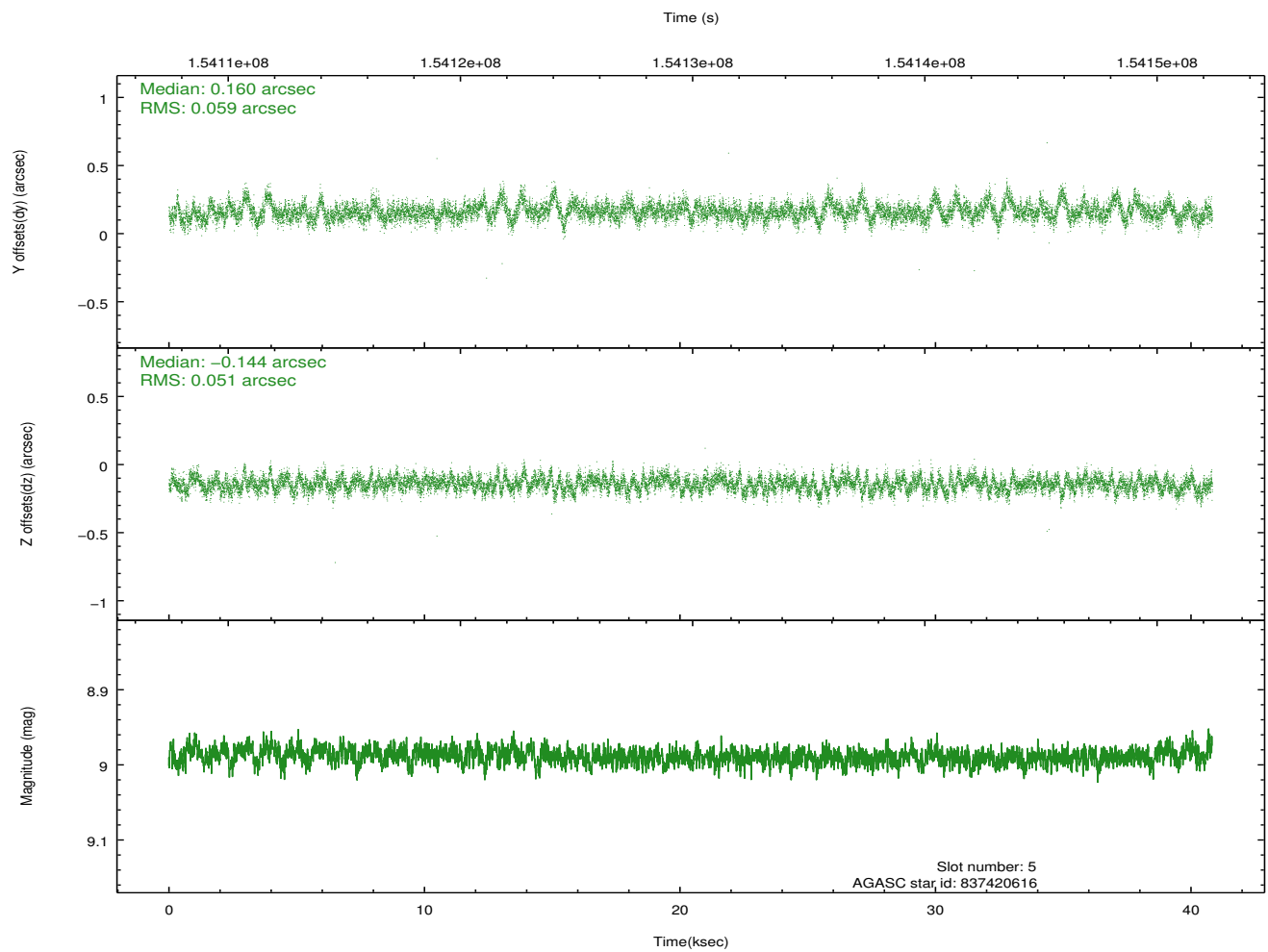
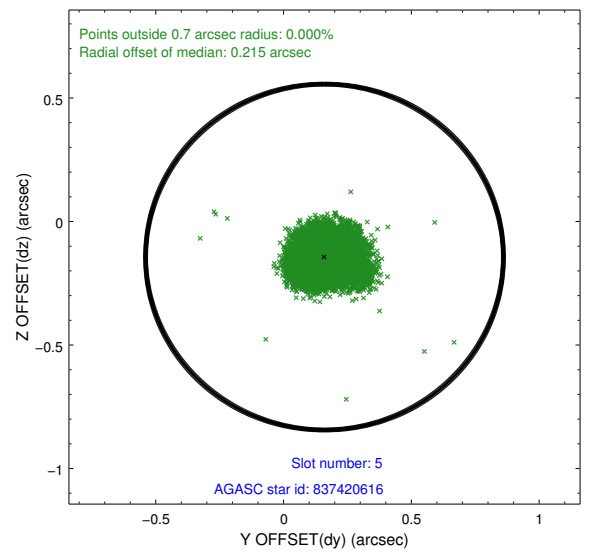
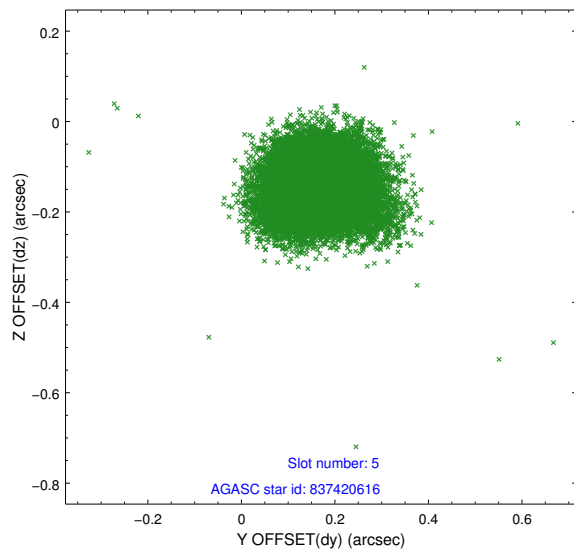
### 2.4.1 Slot 3



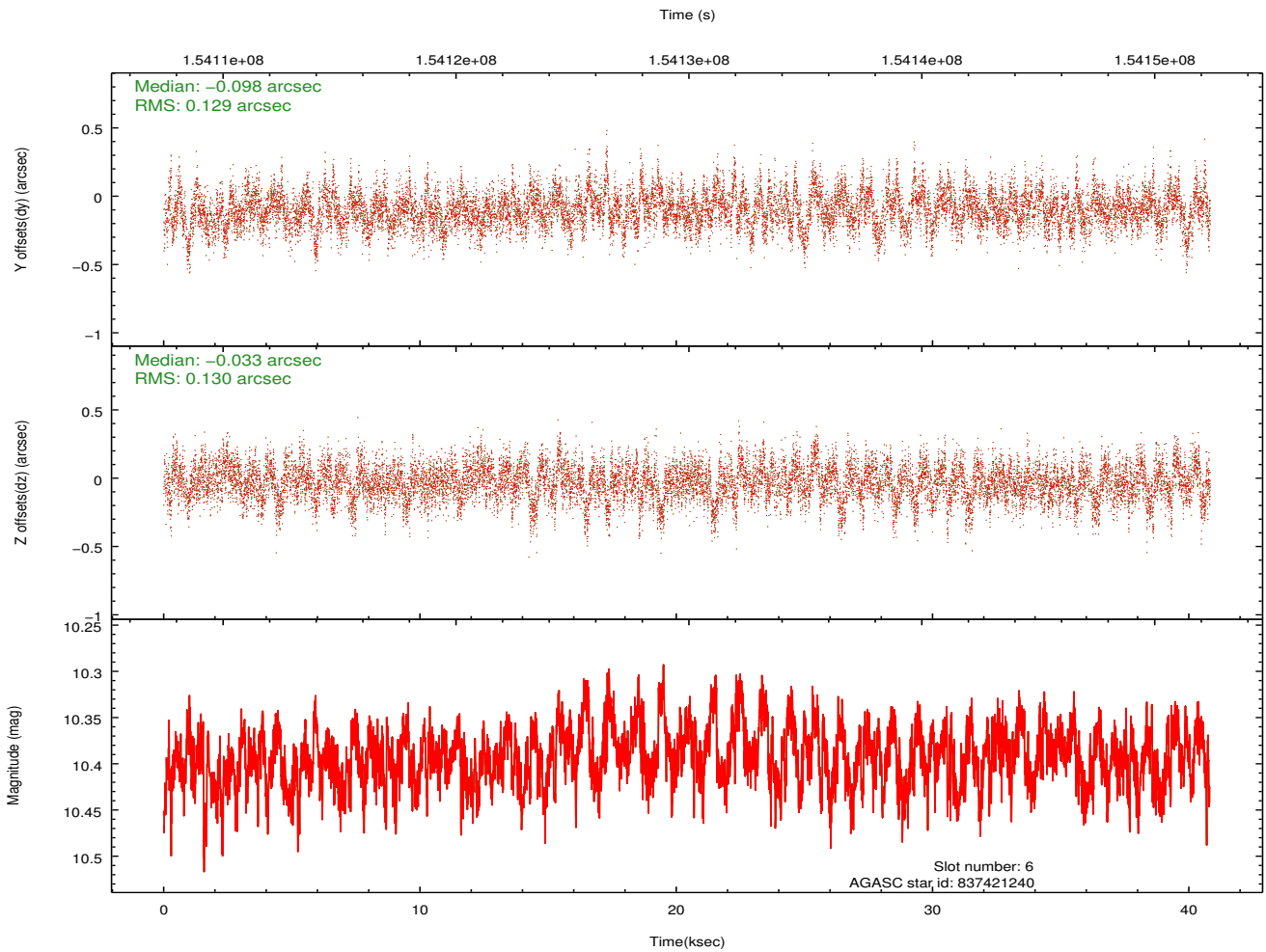
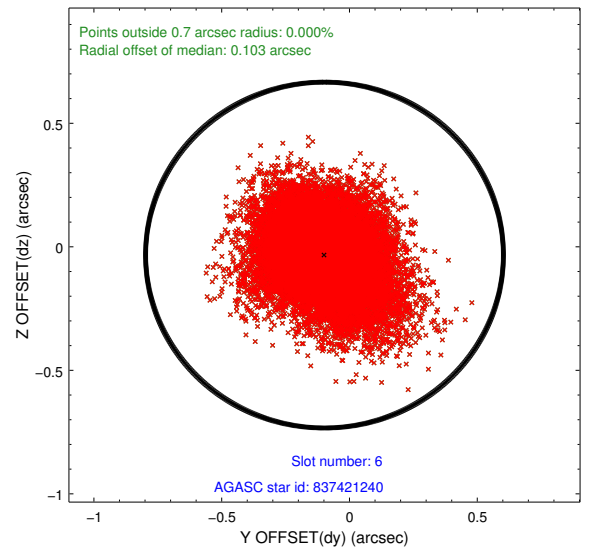
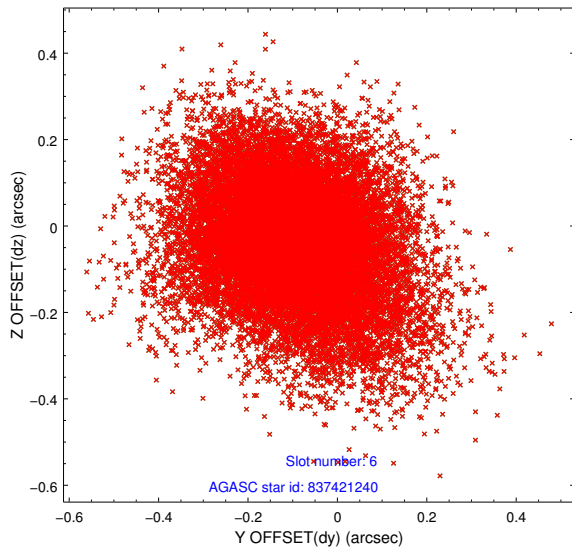
## 2.4.2 Slot 4



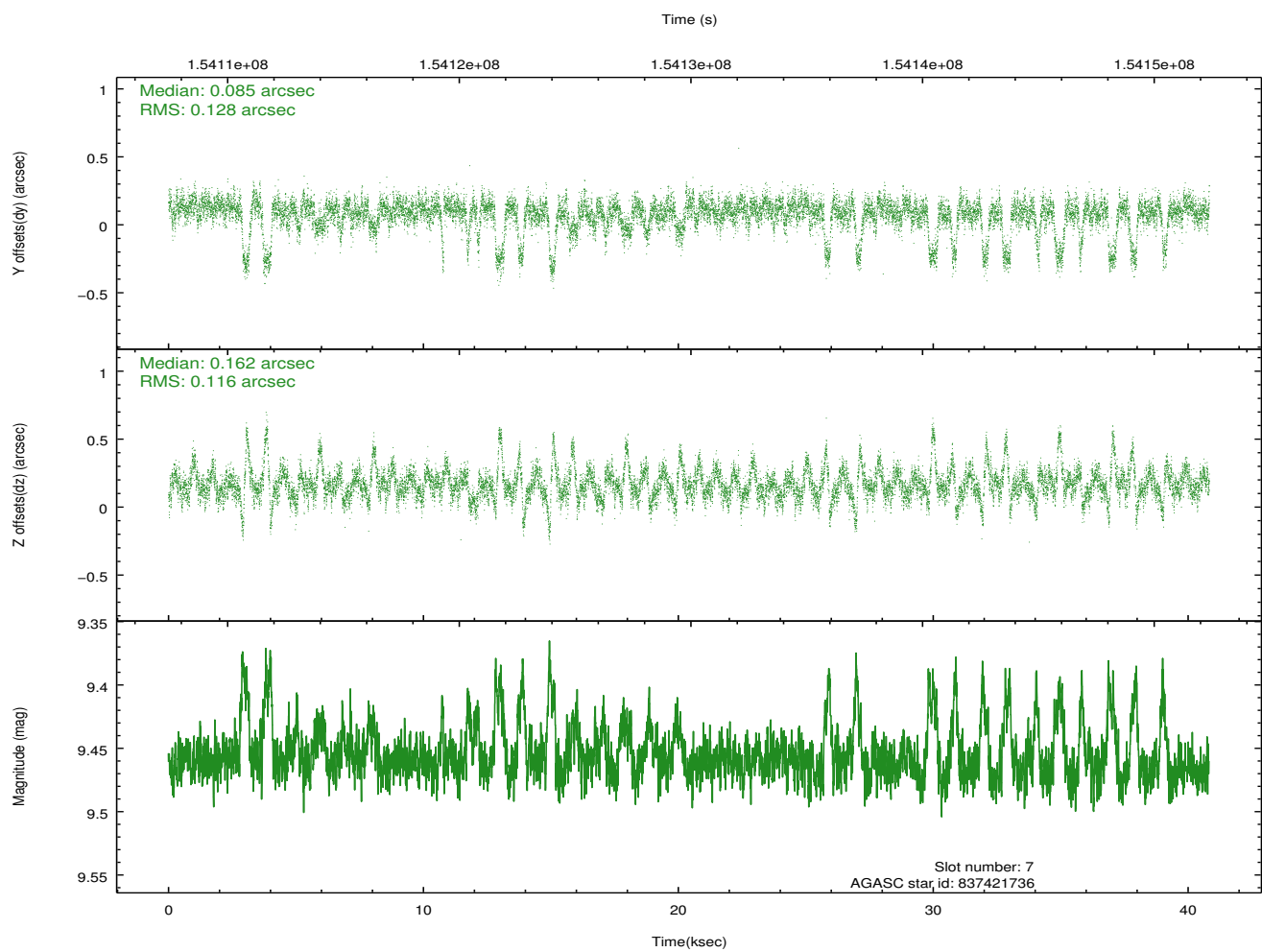
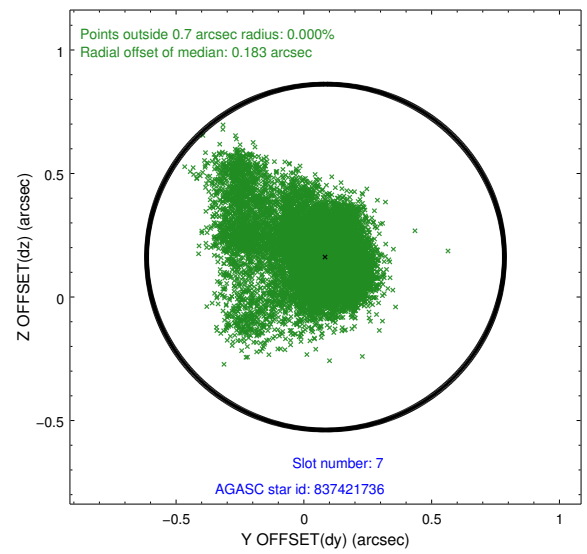
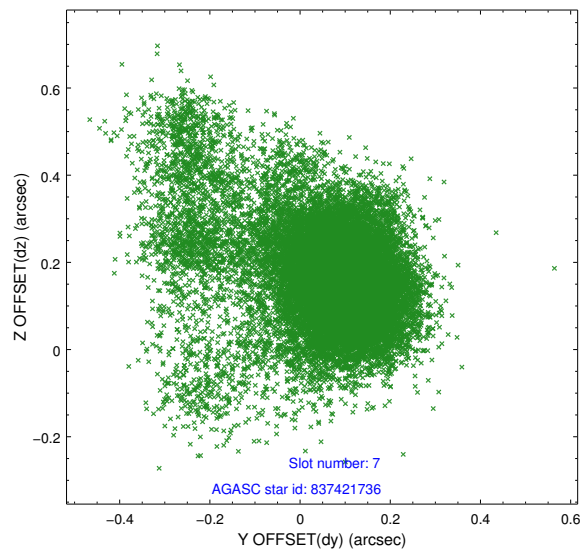
### 2.4.3 Slot 5



## 2.4.4 Slot 6

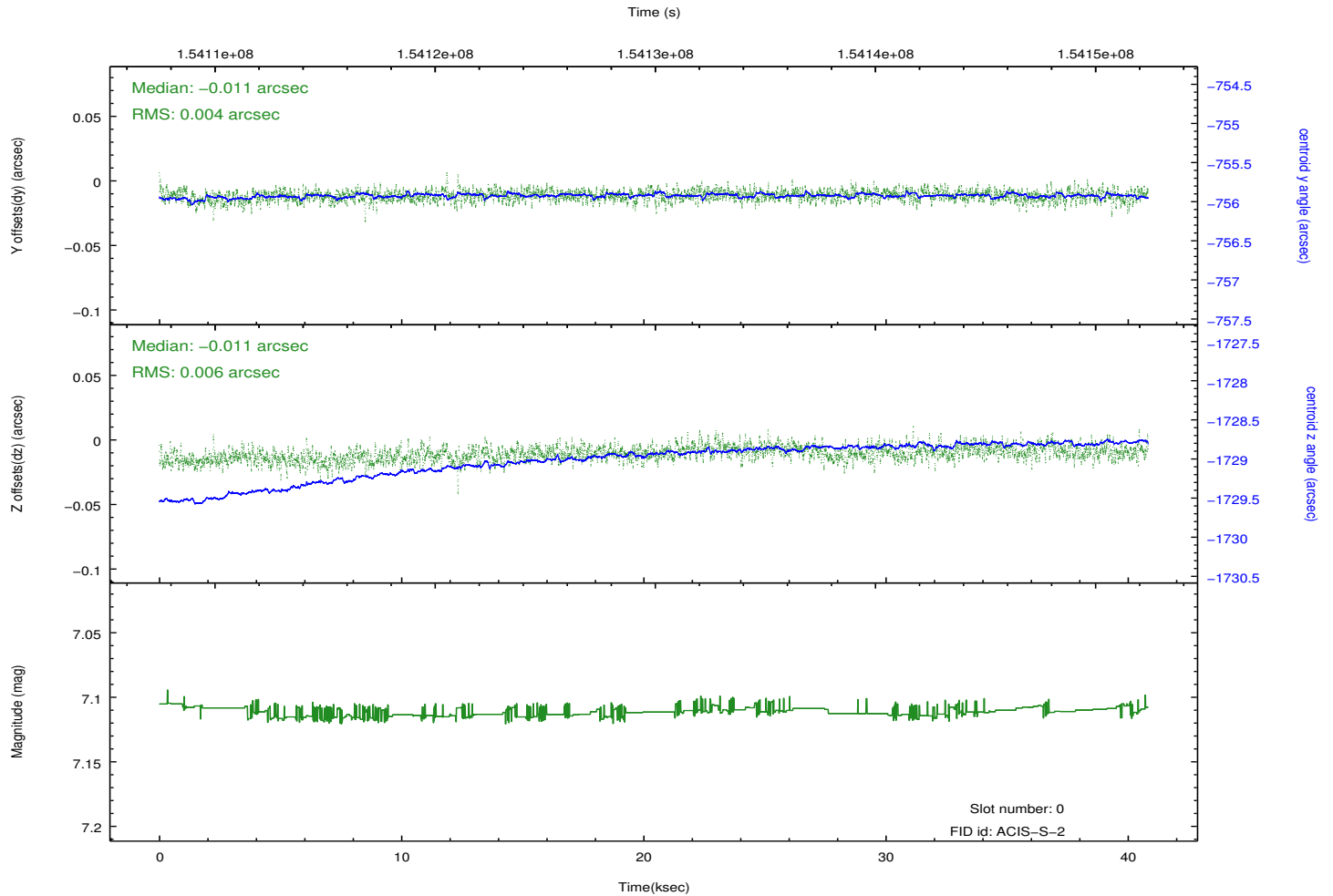
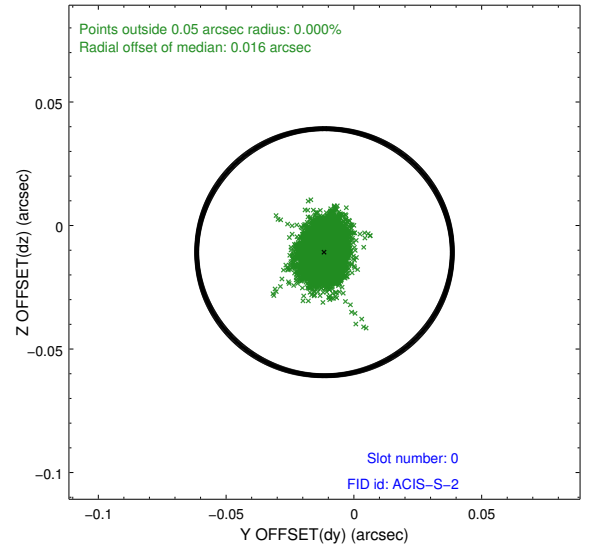
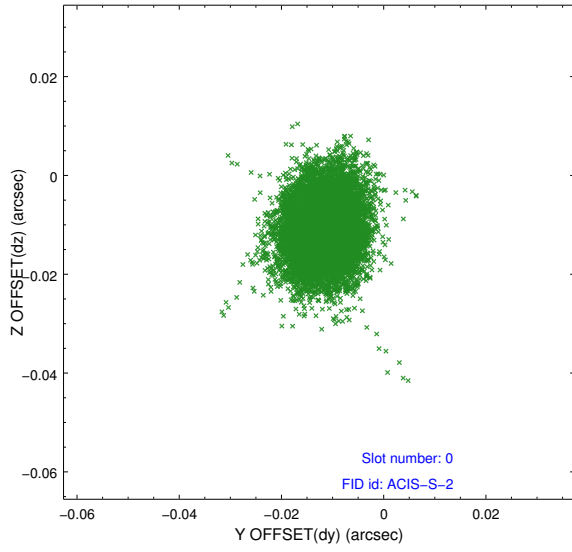


## 2.4.5 Slot 7

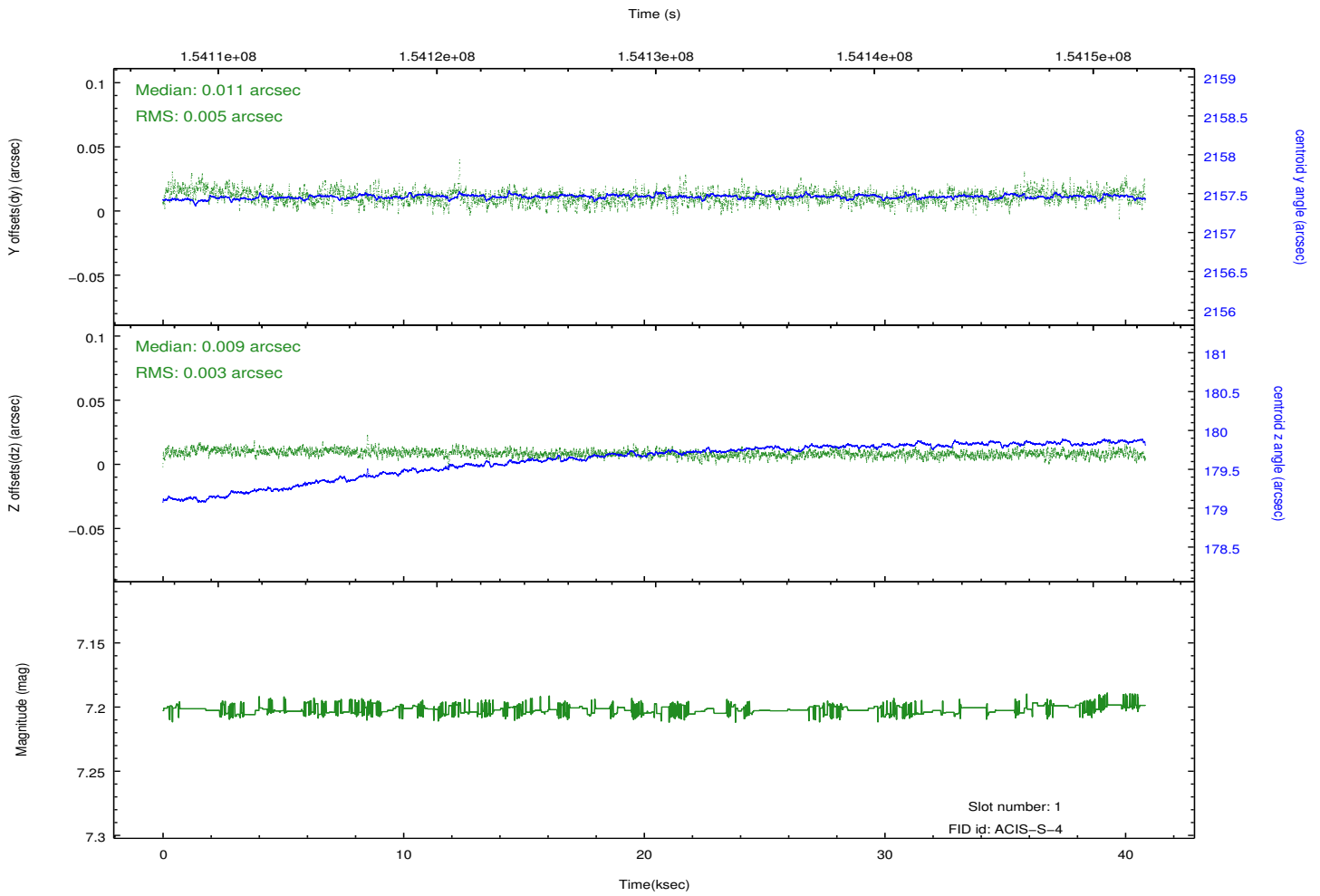
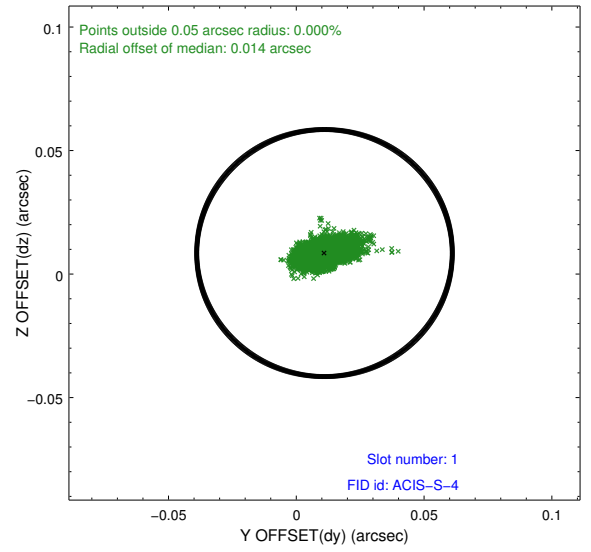
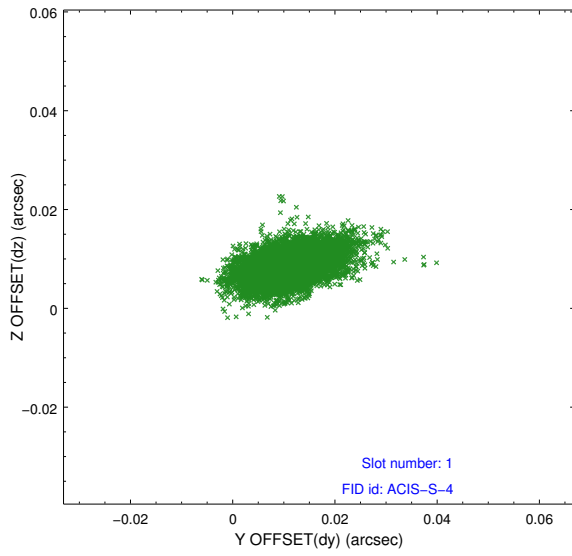


## 2.5 FID Slots

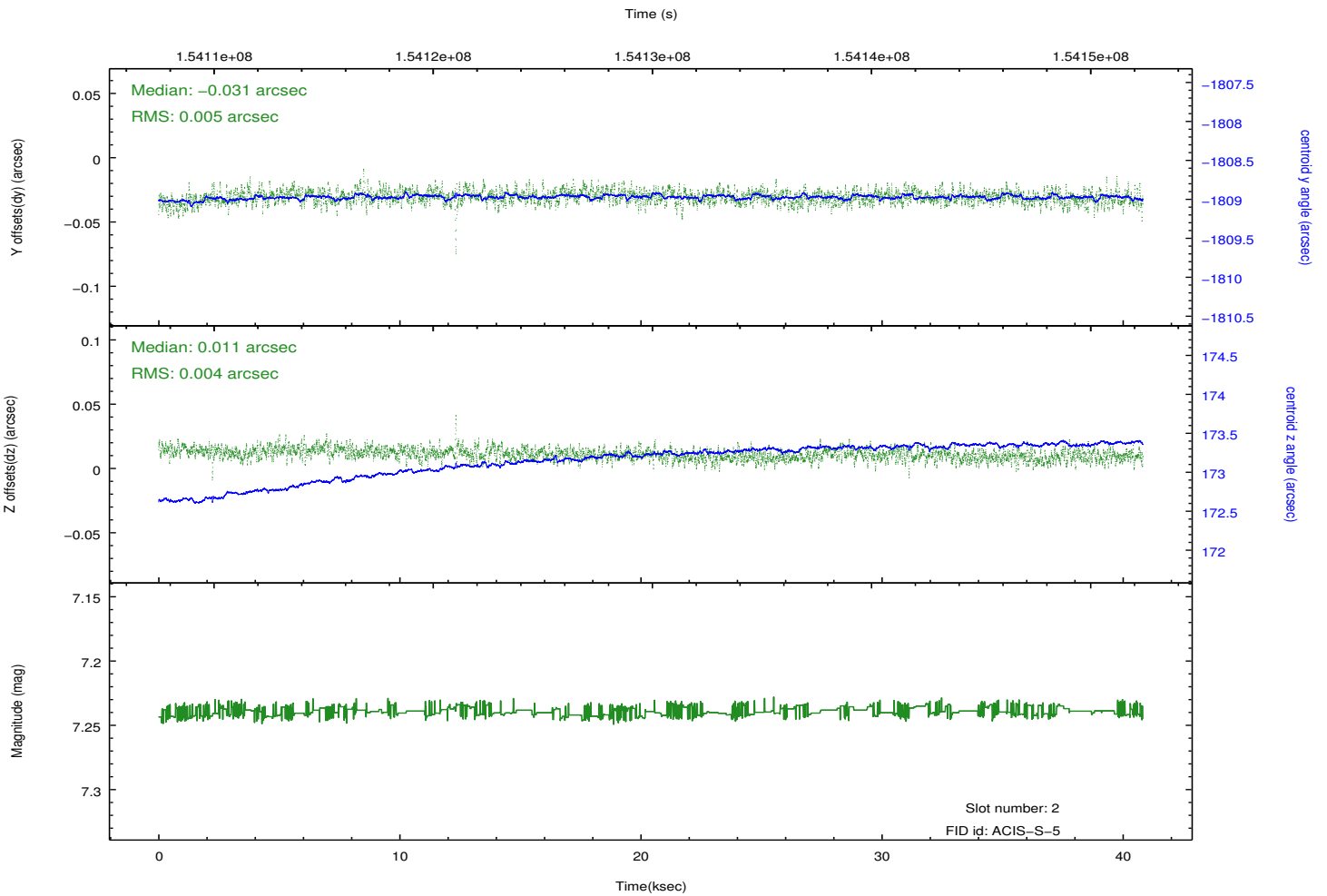
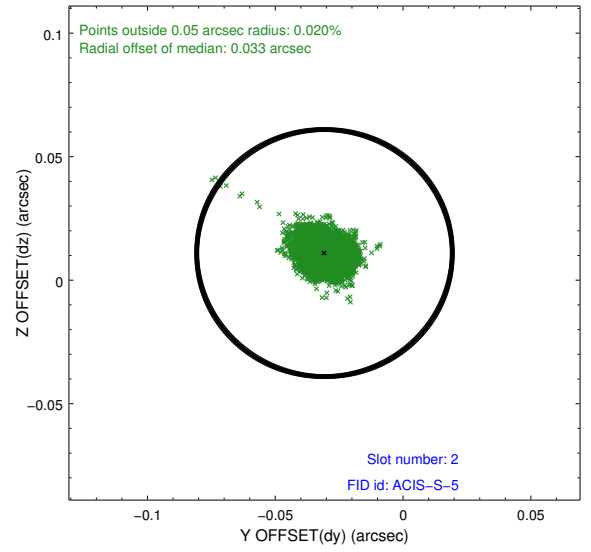
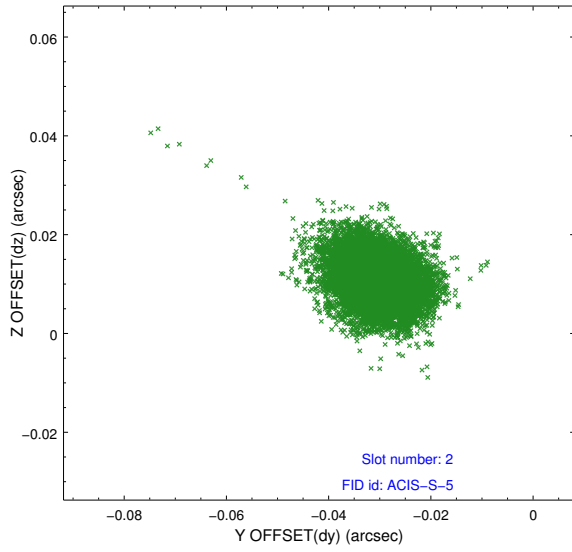
### 2.5.1 Slot 0



## 2.5.2 Slot 1



### 2.5.3 Slot 2



# A Summary

## A.1 Status

V&V Scientist	Jen Lauer
V&V Date (YYYY-MM-DD)	2012.10.26
V&V Edition	1
V&V Disposition and Status	OK
V&V Charge Time	39.737

## A.2 Comments