

V&V Reference Report

L2 ASCDS Version : 8.4.5

Observation 4169 - L2 Version 3
Chandra X-Ray Center

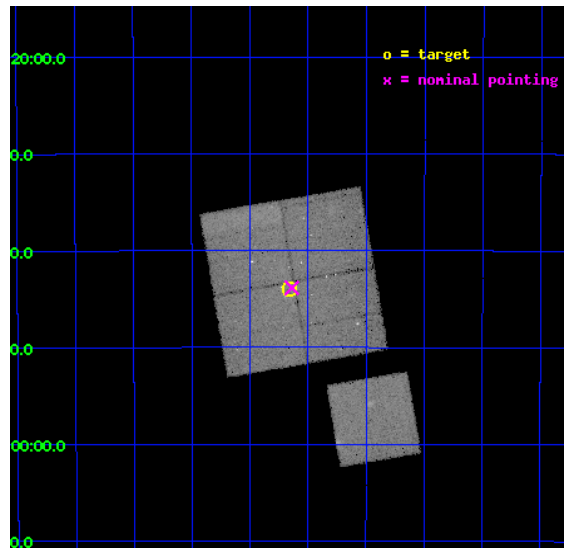
L2 Processing Date : Oct 28 2012

Contents

1	Front	2
2	OBI	3
2.1	OBI	3
2.1.1	Images	3
2.1.2	Bias	3
2.1.3	Parameters	4
2.1.4	Events	4
2.2	Compared Parameters	5
2.3	Aspect	6
2.4	Star Slots	9
2.4.1	Slot 3	9
2.4.2	Slot 4	10
2.4.3	Slot 5	11
2.4.4	Slot 6	12
2.4.5	Slot 7	13
2.5	FID Slots	14
2.5.1	Slot 0	14
2.5.2	Slot 1	15
2.5.3	Slot 2	16
A	Summary	17
A.1	Status	17
A.2	Comments	17

1 Front

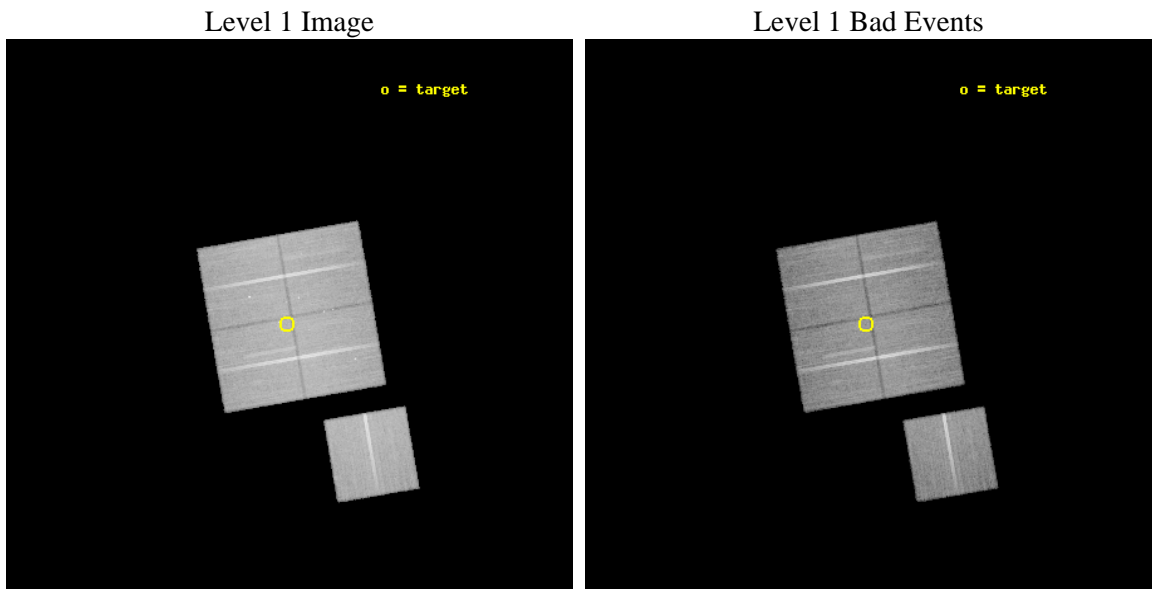
seq_num	800325	Sequence number
obs_id	4169	Observation id
title	SURVEYING THE FORNAX CLUSTER OF GALAXIES	Proposal title
observer	Dr Caleb Scharf	Principal investigator
object	FORNAX CLUSTER	Source name
dtcycle	0	
cycle	P	events from which exps? Prim/Second/Both
ra_targ	54.2896	Observer's specified target RA [deg]
dec_targ	-35.73335	Observer's specified target Dec [deg]
ra_nom	54.284825973013	Nominal RA [deg]
dec_nom	-35.730834095093	Nominal Dec [deg]
roll_nom	170.20589517453	Nominal Roll [deg]
revision	3	Processing version of data
ontime	45884.770501226	Sum of GTIs [s]
livetime	45285.252194751	Livetime [s]
ontime0	45881.506450891	Sum of GTIs [s]
ontime1	45878.406530678	Sum of GTIs [s]
ontime2	45881.58851099	Sum of GTIs [s]
ontime3	45884.770501226	Sum of GTIs [s]
ontime6	45881.465351045	Sum of GTIs [s]
l2events	154242	Number of level 2 events



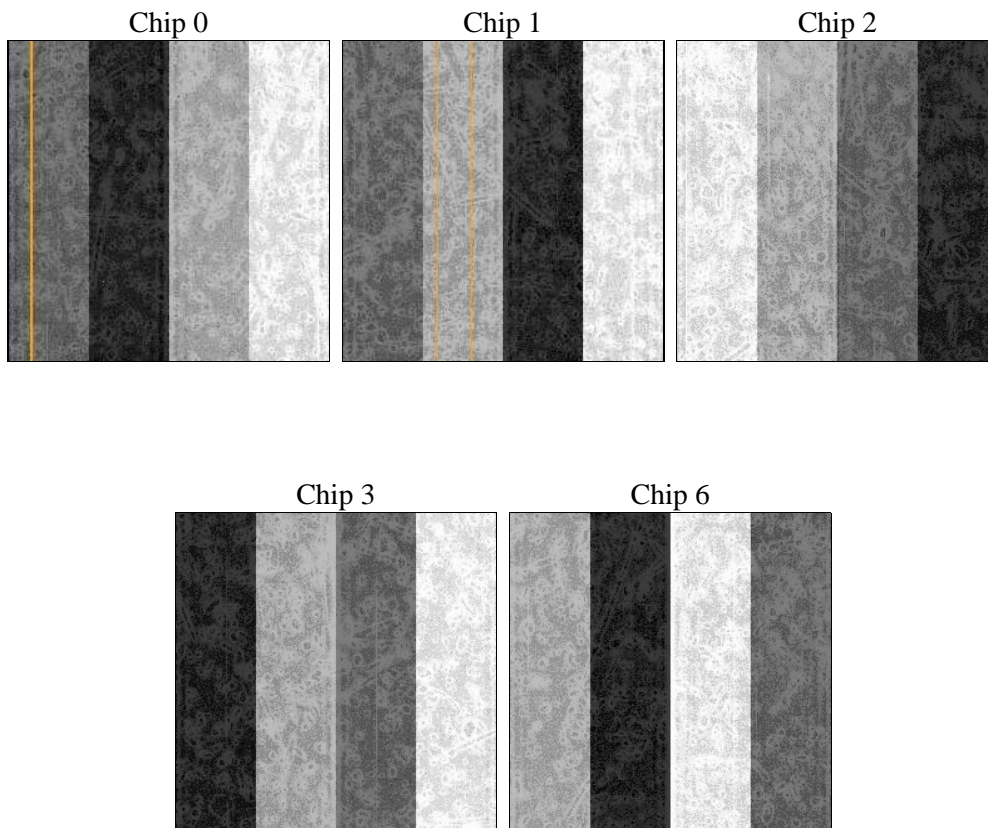
2 OBI

2.1 OBI

2.1.1 Images



2.1.2 Bias



2.1.3 Parameters

obi_num	0	Obi number	sched_exp_time	46116.979000	[s] Scheduled observation exposure time
ascdsver	8.4.5	Processing system revision	ontime	45884.770501226	Sum of GTIs [s]
caldbver	4.5.2	 	ontime0	45881.506450891	Sum of GTIs [s]
date	2012-10-28T13:55:46	Date and time of file creation	ontime1	45878.406530678	Sum of GTIs [s]
revision	3	Processing version of data	ontime2	45881.58851099	Sum of GTIs [s]
			ontime3	45884.770501226	Sum of GTIs [s]
			ontime6	45881.465351045	Sum of GTIs [s]
			l1events	1287717	Number of level 1 events

2.1.4 Events

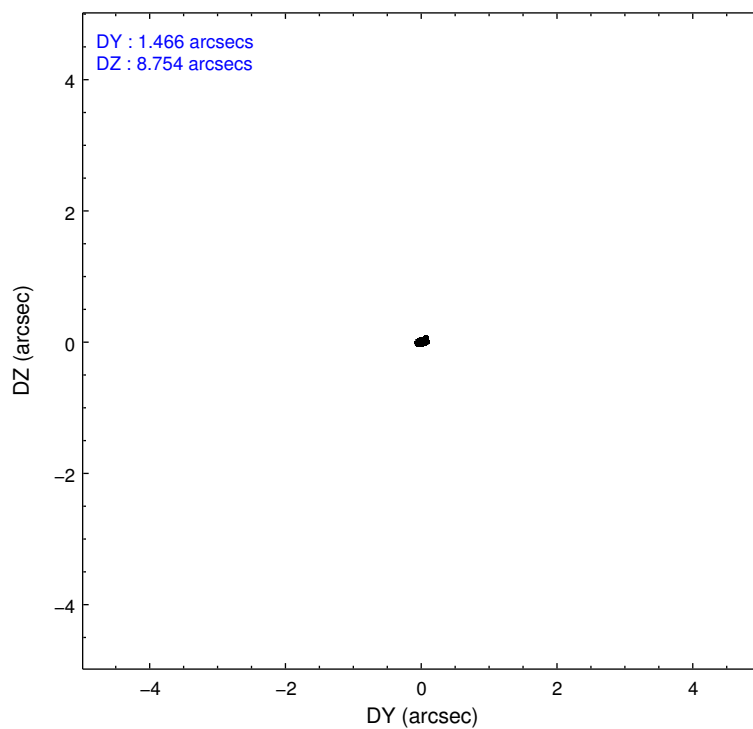
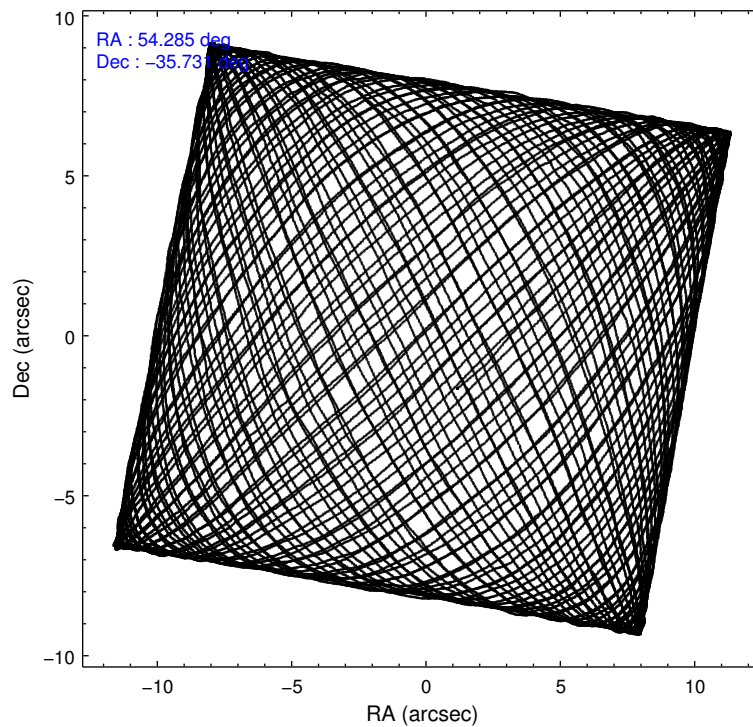
	ccd 0	ccd 1	ccd 2	ccd 3	ccd 6
level 1 events	243245	250783	273110	259561	261018
rejected events	208771	209821	238899	226734	224580
rejected %	85%	83%	87%	87%	86%

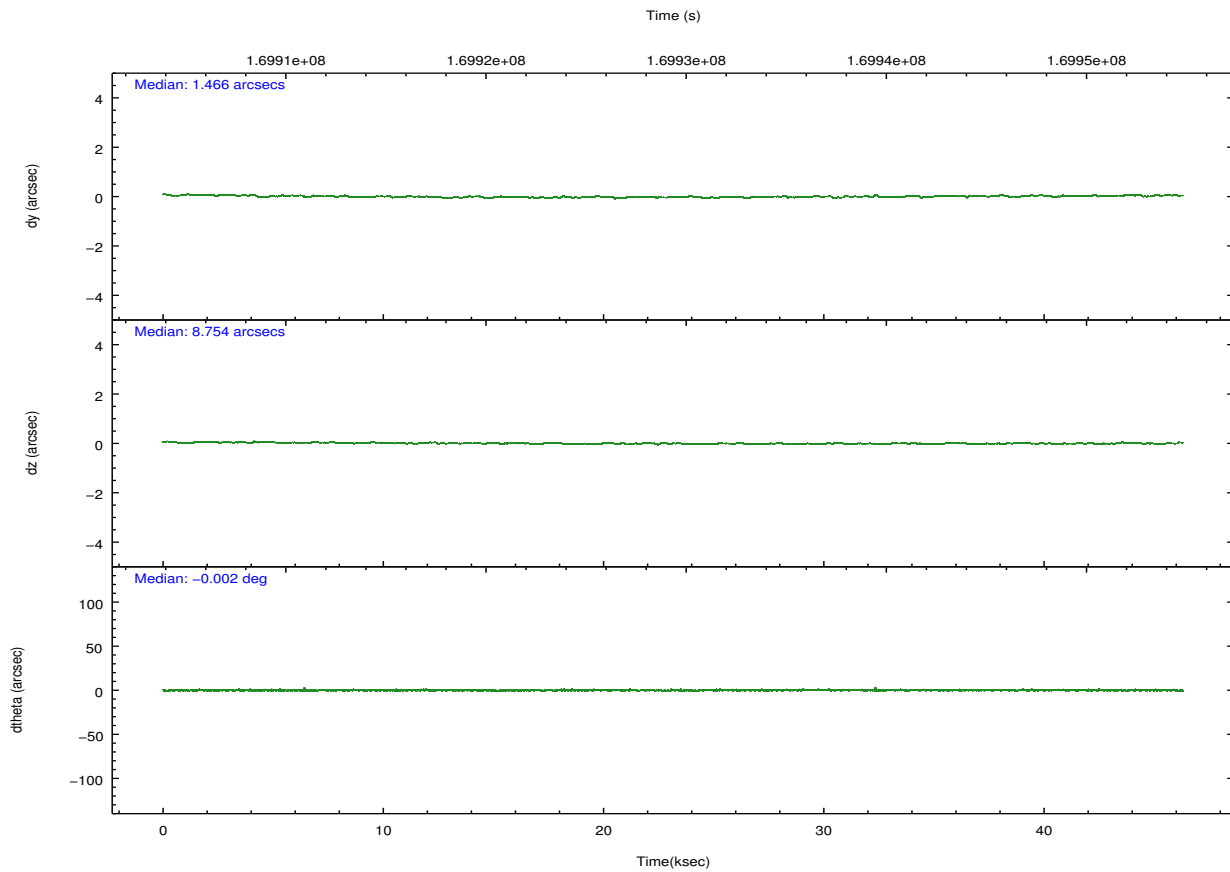
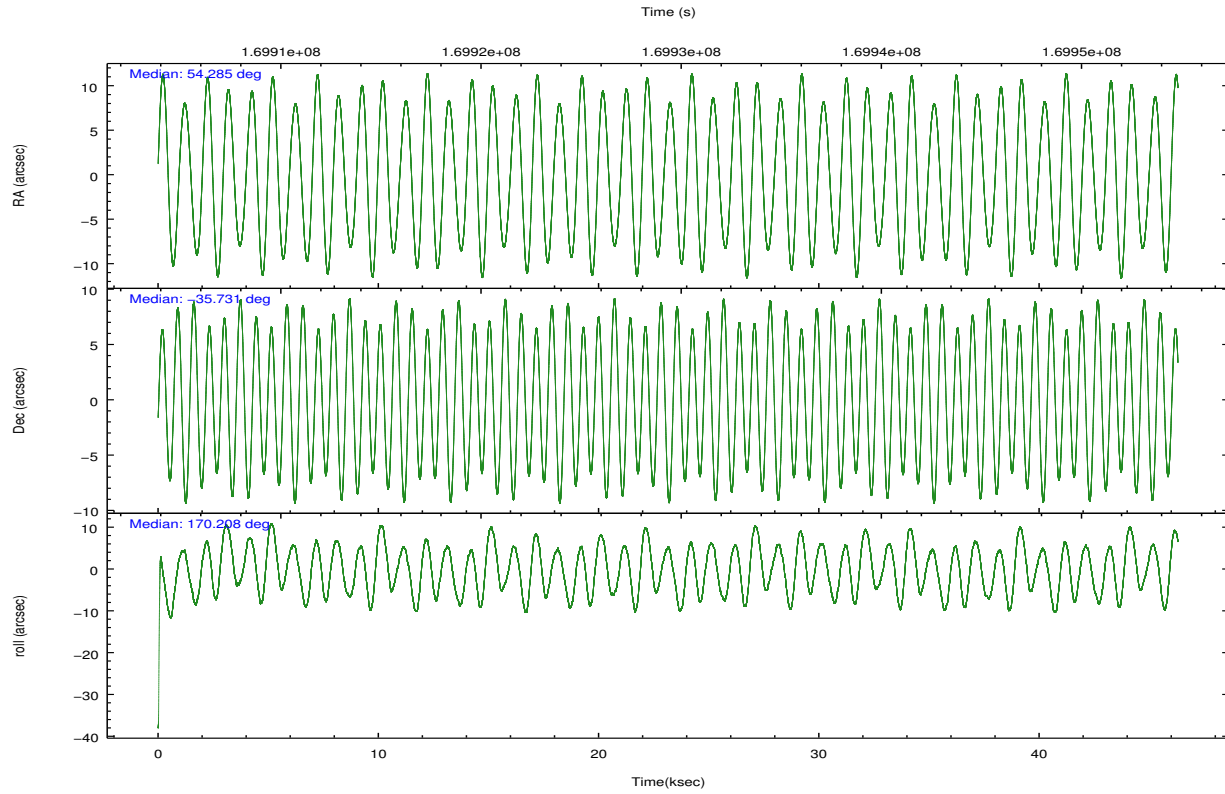
	ccd 0	ccd 1	ccd 2	ccd 3	ccd 6
grade 0 events	16649	20791	16588	16029	17846
	6%	8%	6%	6%	6%
grade 1 events	170	148	152	165	142
	0%	0%	0%	0%	0%
grade 2 events	6645	7323	6554	5885	6389
	2%	2%	2%	2%	2%
grade 3 events	3080	3523	3167	2988	3259
	1%	1%	1%	1%	1%
grade 4 events	2962	3390	3090	2943	3263
	1%	1%	1%	1%	1%
grade 5 events	8545	9306	8144	9697	9590
	3%	3%	2%	3%	3%
grade 6 events	5159	5972	4836	5010	5735
	2%	2%	1%	1%	2%
grade 7 events	200035	200330	230579	216844	214794
	82%	79%	84%	83%	82%

2.2 Compared Parameters

Parameter	Planned	Actual	Parameter	Planned	Actual
Instrument	ACIS	ACIS	Obspar format version number	7	7
Detector	ACIS-01236	ACIS-01236	Obspar file type	PREDICTED	ACTUAL
Grating	NONE	NONE	Obspar update status	NONE	UPDATED
Data mode	VFAINT	VFAINT	Number of optional ACIS chips dropped	0	0
Observation mode	POINTING	POINTING	On-chip summing requested	N	N
[deg] Pointing RA	54.316404	54.28482597301252	Subarray requested	NONE	NONE
[deg] Pointing Dec	-35.721282	-35.73083409509263	Alternating exposures requested	N	N
[deg] Pointing Roll	170.015646	170.2058951745335	[s] Primary exposure time	0.000000	3.1
[mm] SIM focus pos	-0.782348	-0.7809083437167272			
[mm] SIM defocus	0	0.001439871863259334			
[mm] SIM translation stage pos	-233.592463	-233.5874344608287			
[mm] SIM translation stage offset	0	-0.005018542100998502			
[s] Observation start time (MET)	169906378.184000	169906001.99081			
Observation start date	2003-05-21T12:11:54	2003-05-21T12:06:41			
[s] Observation end time (MET)	169952495.184000	169952809.6428			
Observation end date	2003-05-22T01:00:31	2003-05-22T01:06:49			
Read mode	TIMED	TIMED			

2.3 Aspect



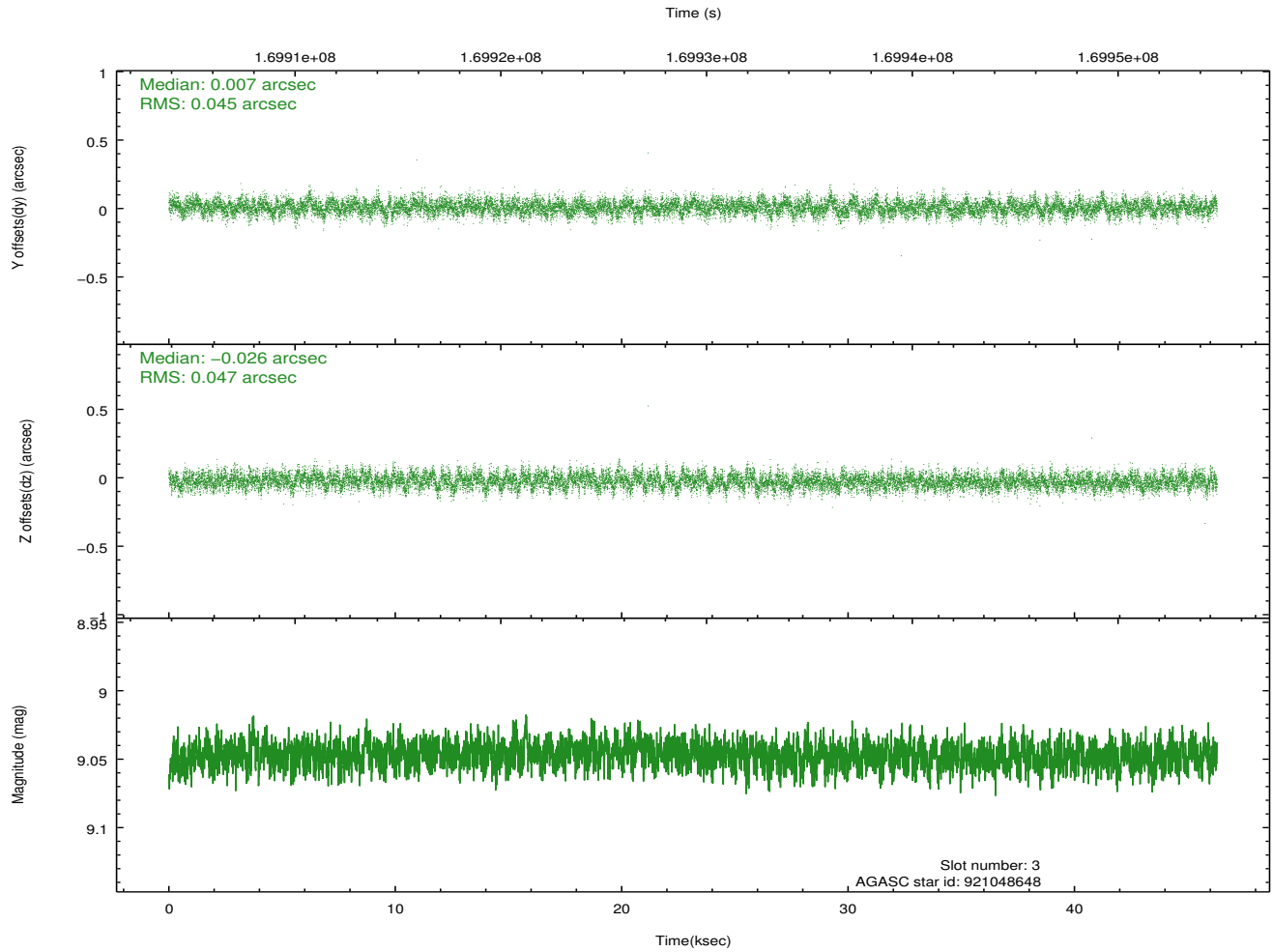
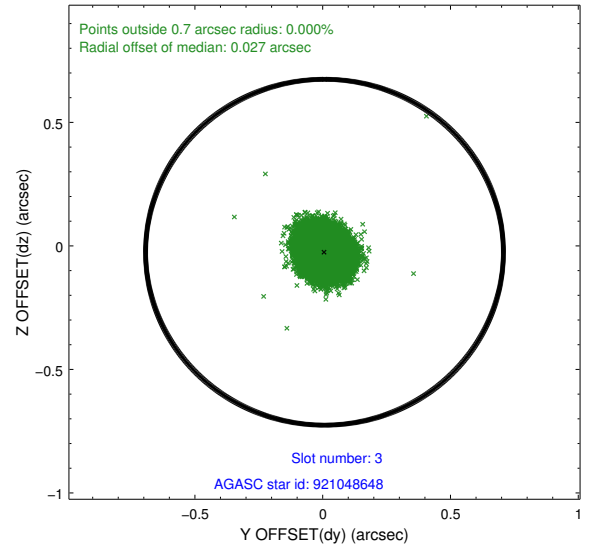
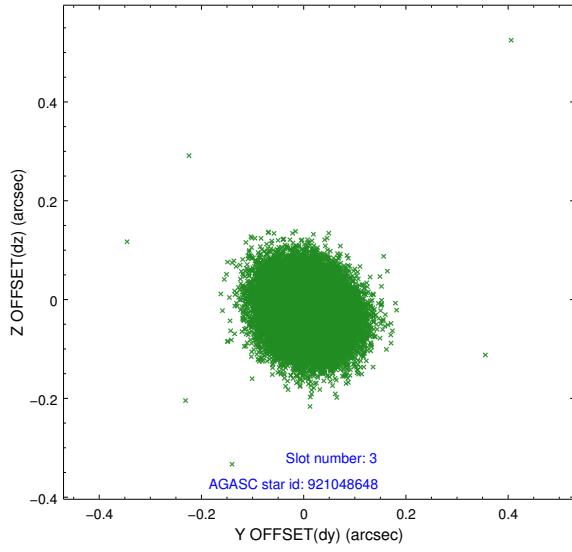


Slot Statistics

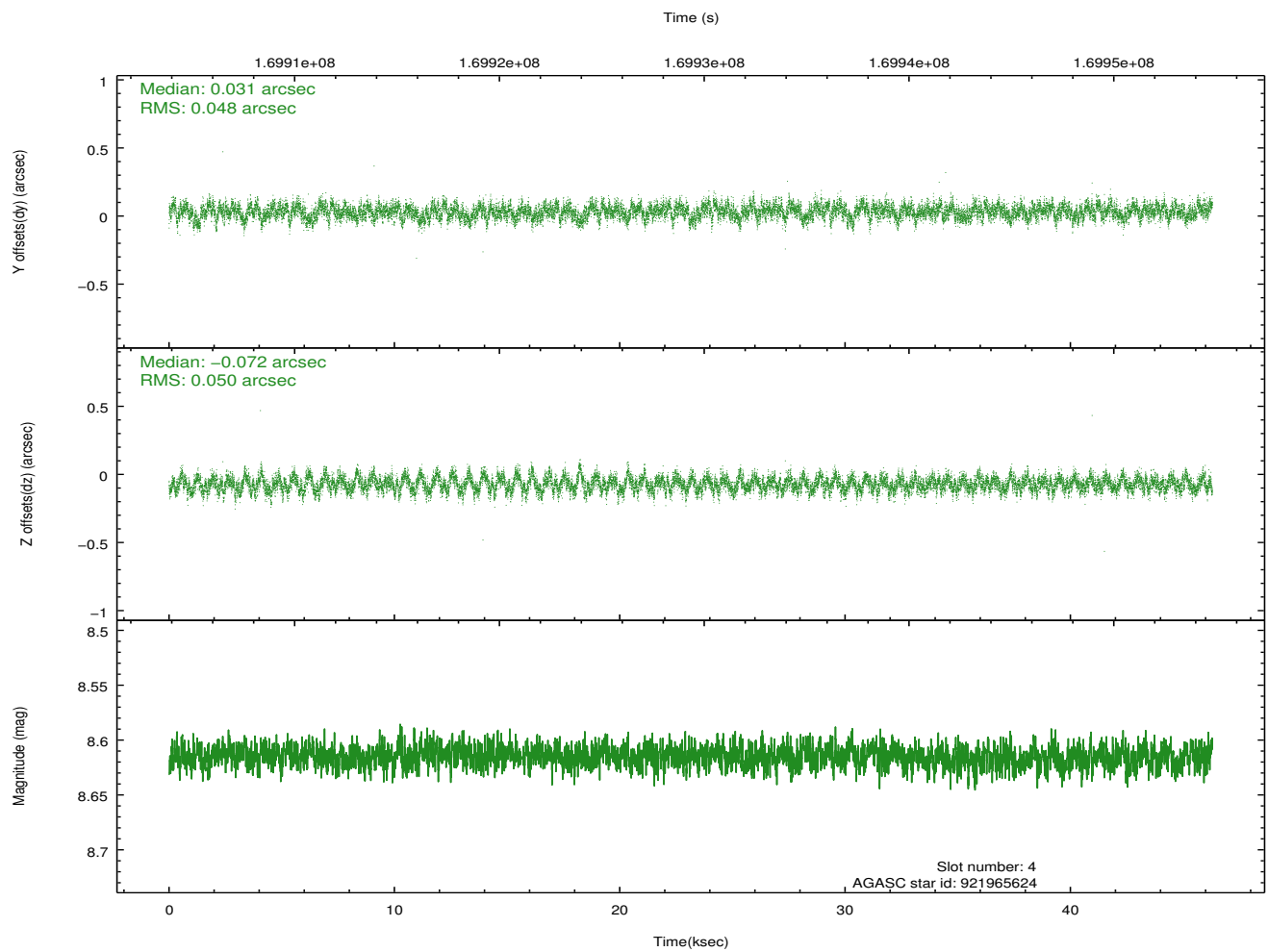
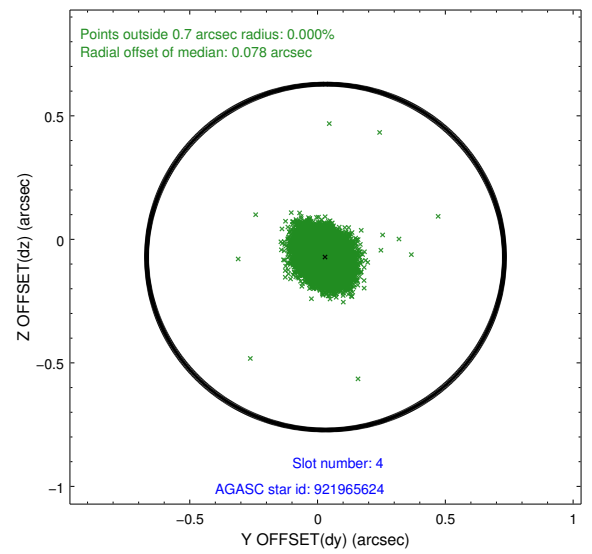
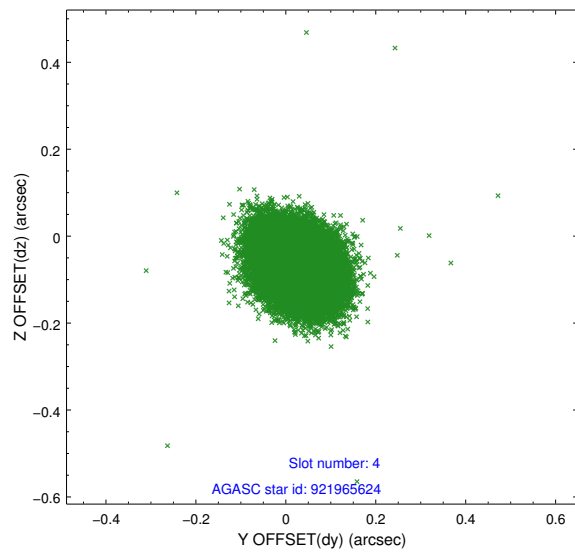
slot	status	id	mag	n_pts	med_dy	med_dz	dr1	dr2	ra	dec	mean_y	mean_z
0	FID	ACIS-I-1	7.24	11293	-0.035	0.072	0.006	0.011	0.000000	0.000000	938.33	-832.13
1	FID	ACIS-I-5	7.23	11290	-0.062	0.022	0.006	0.011	0.000000	0.000000	-1809.81	1065.32
2	FID	ACIS-I-6	7.26	11292	0.005	-0.024	0.007	0.011	0.000000	0.000000	403.93	1709.76
3	GUIDE	921048648	9.05	22578	0.007	-0.026	0.069	0.112	53.884610	-35.870023	1147.38	748.50
4	GUIDE	921965624	8.61	22574	0.031	-0.072	0.073	0.118	54.900706	-35.940077	-1814.47	485.73
5	GUIDE	921966544	7.92	22583	0.035	0.098	0.057	0.092	54.743508	-35.636012	-1177.77	-515.79
6	GUIDE	921970112	9.58	22506	-0.022	0.191	0.089	0.145	54.291262	-35.695592	88.46	-77.90
7	GUIDE	921046584	9.21	22576	-0.049	-0.192	0.094	0.147	53.976815	-36.314393	599.81	2275.43

2.4 Star Slots

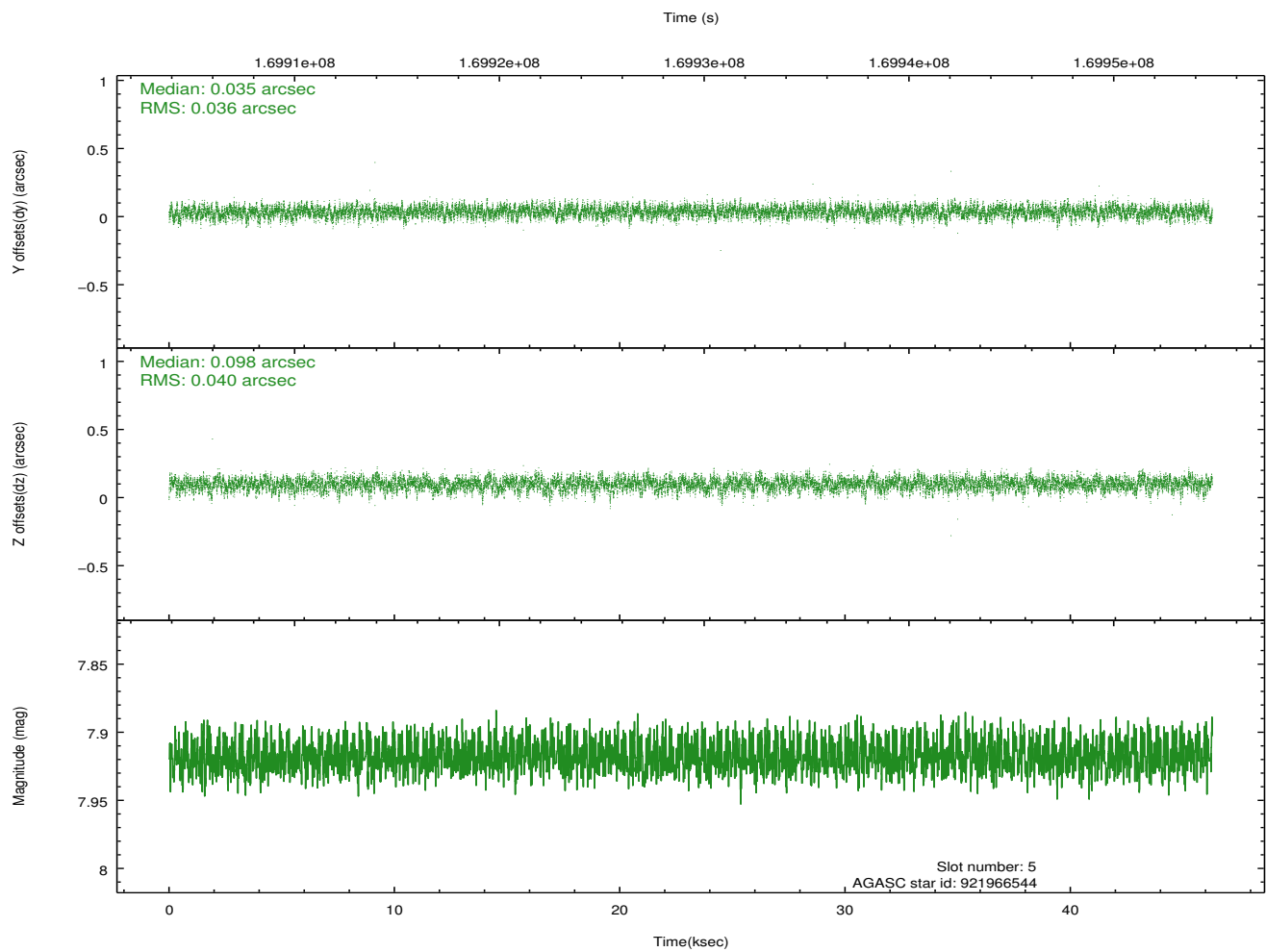
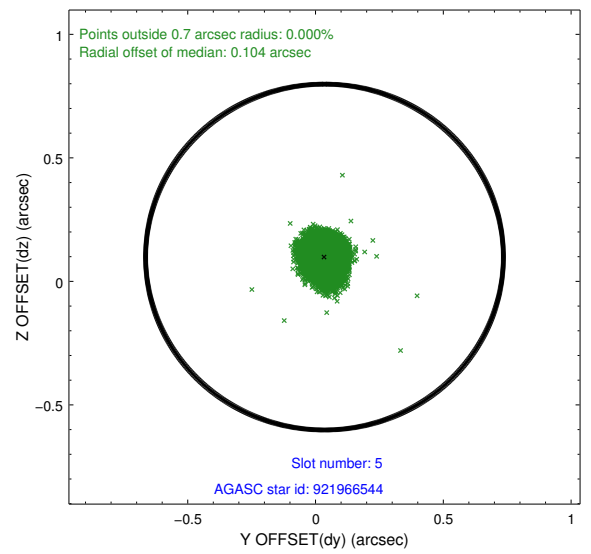
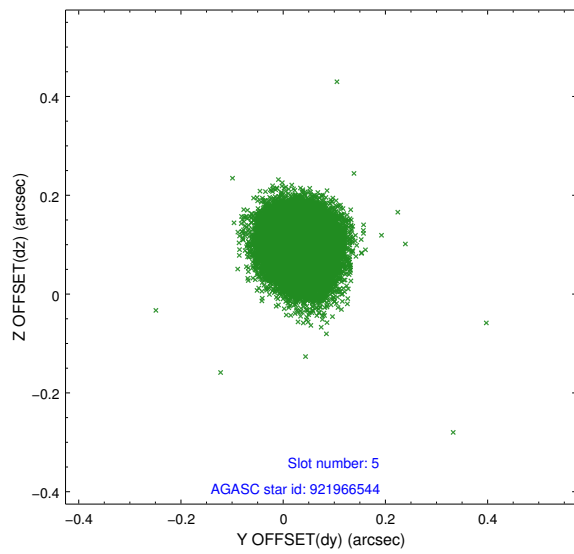
2.4.1 Slot 3



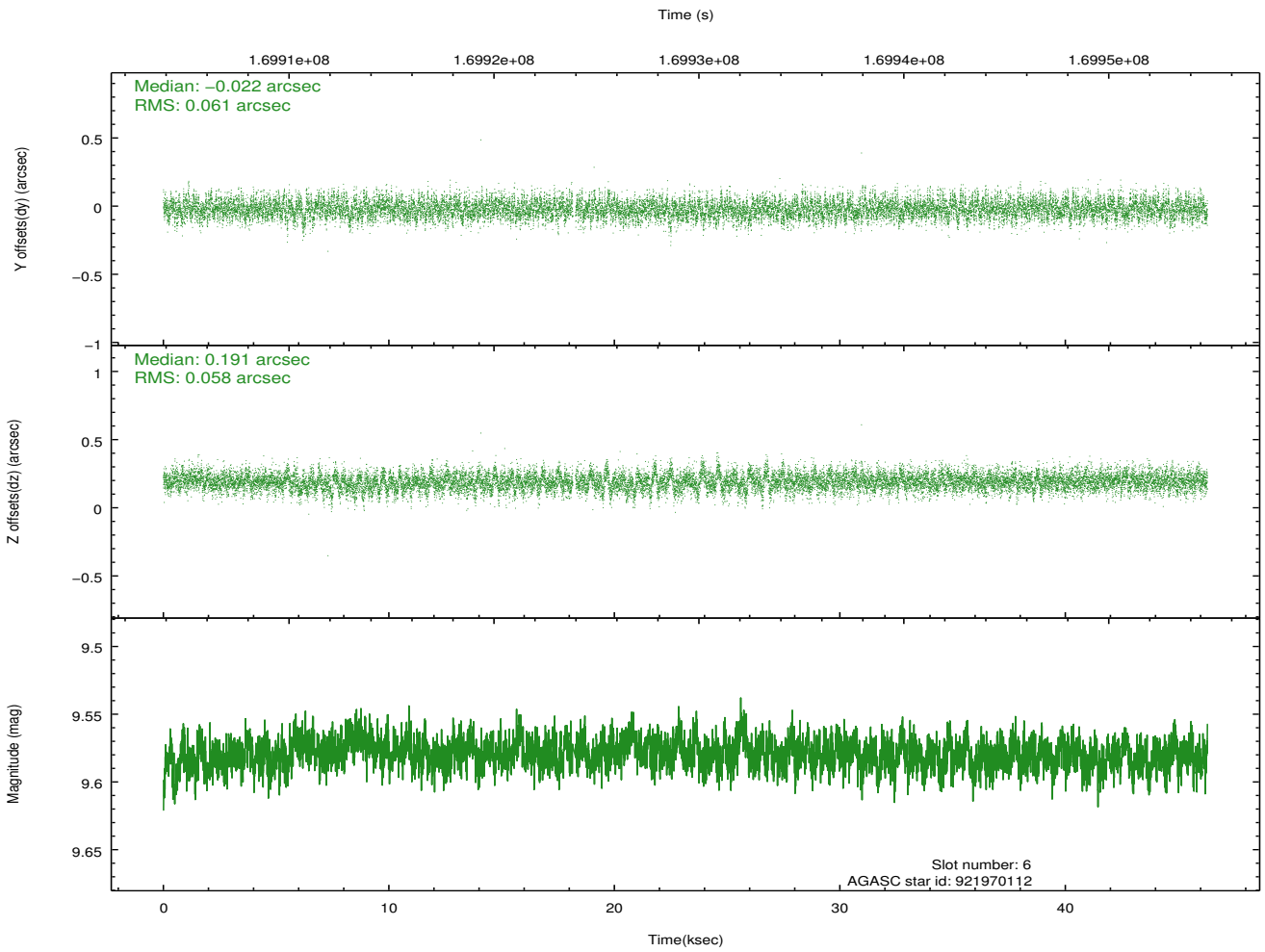
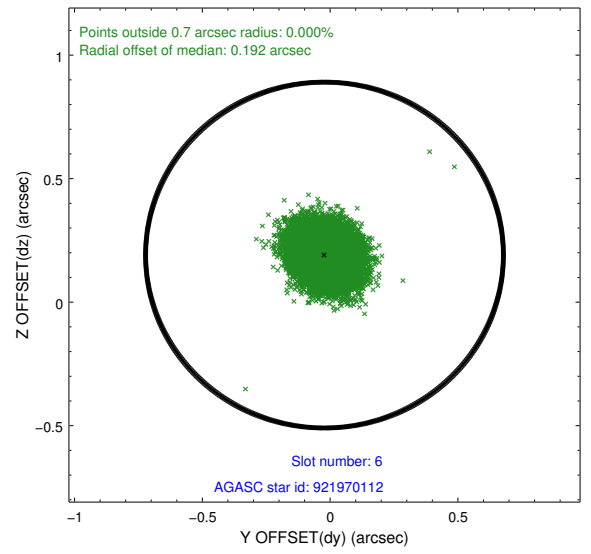
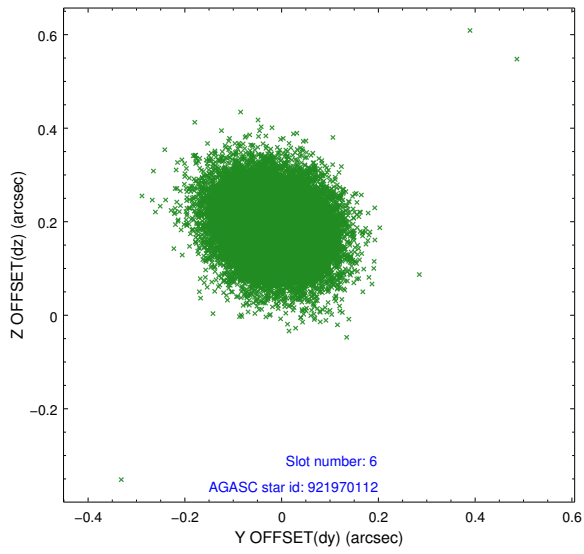
2.4.2 Slot 4



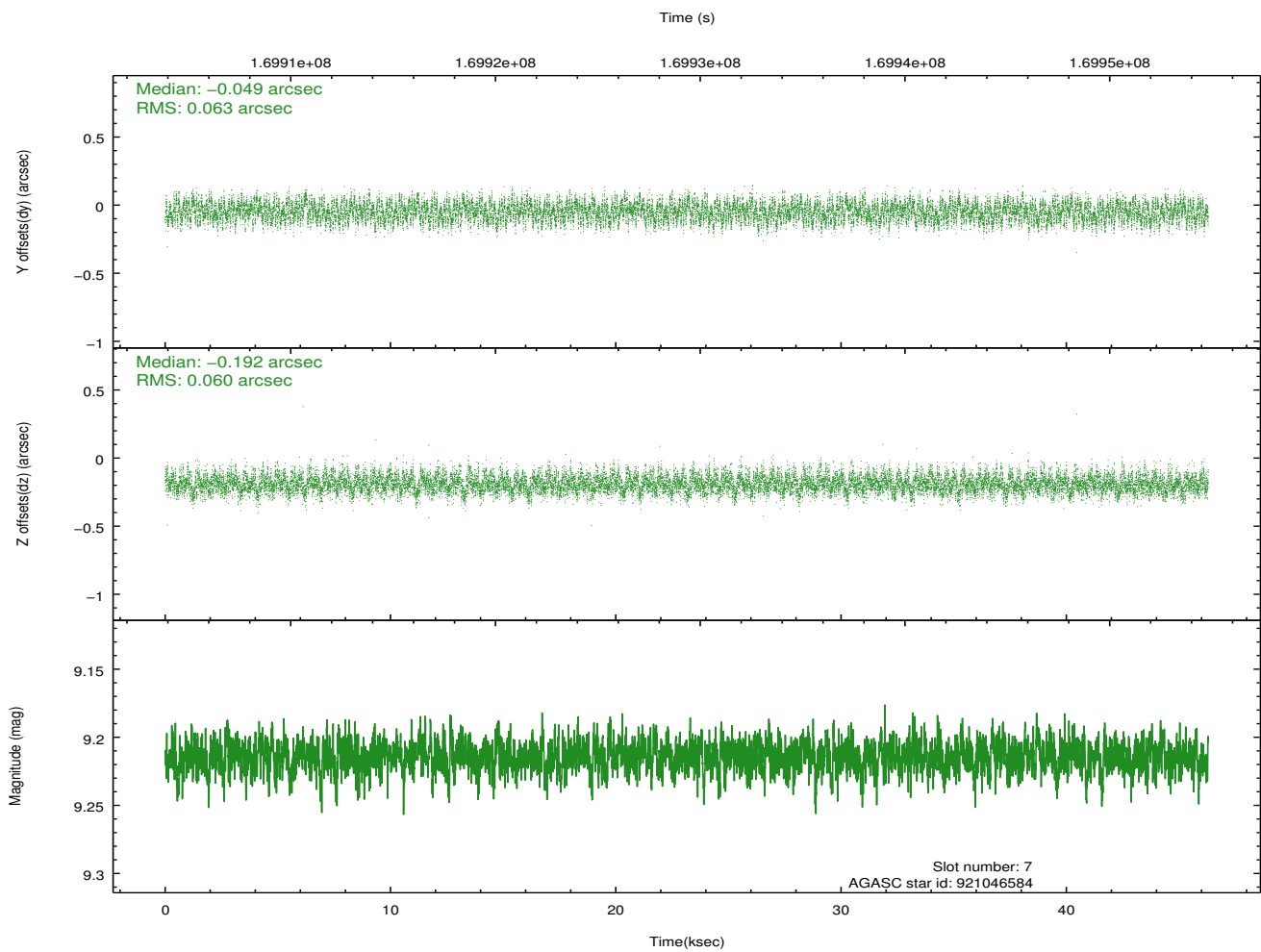
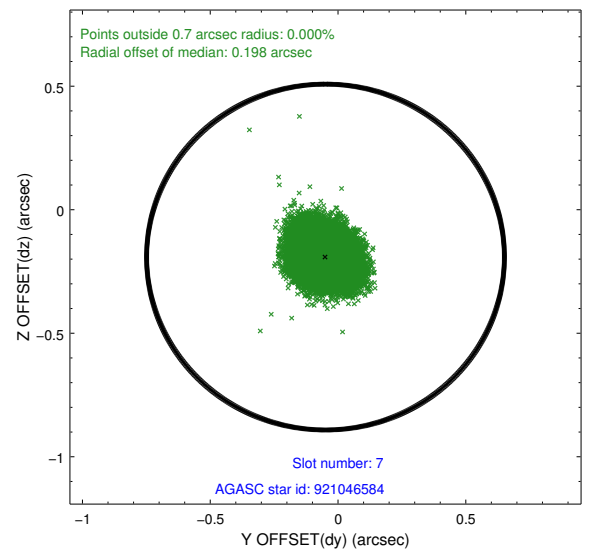
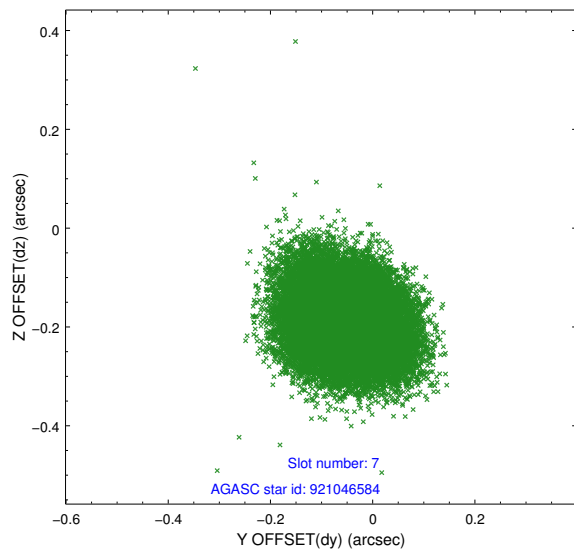
2.4.3 Slot 5



2.4.4 Slot 6

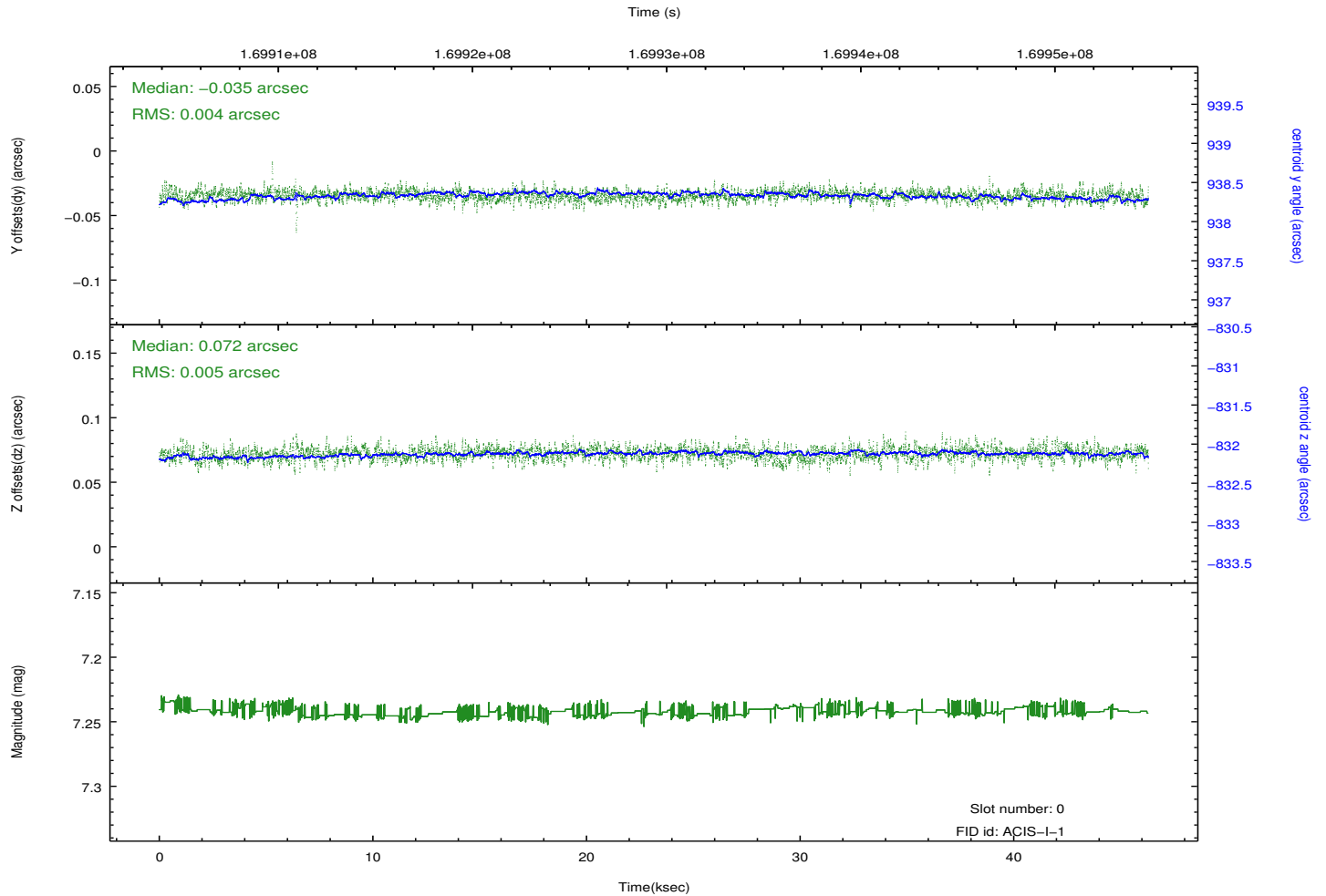
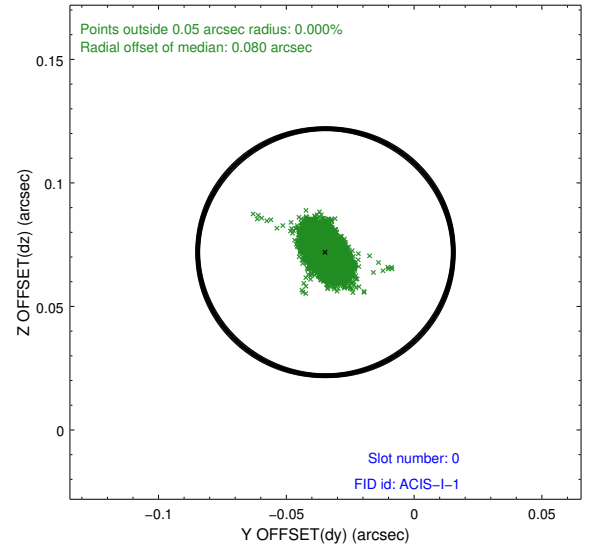
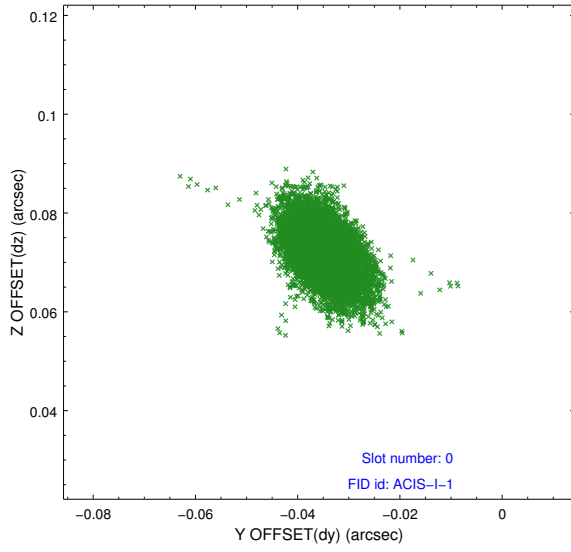


2.4.5 Slot 7

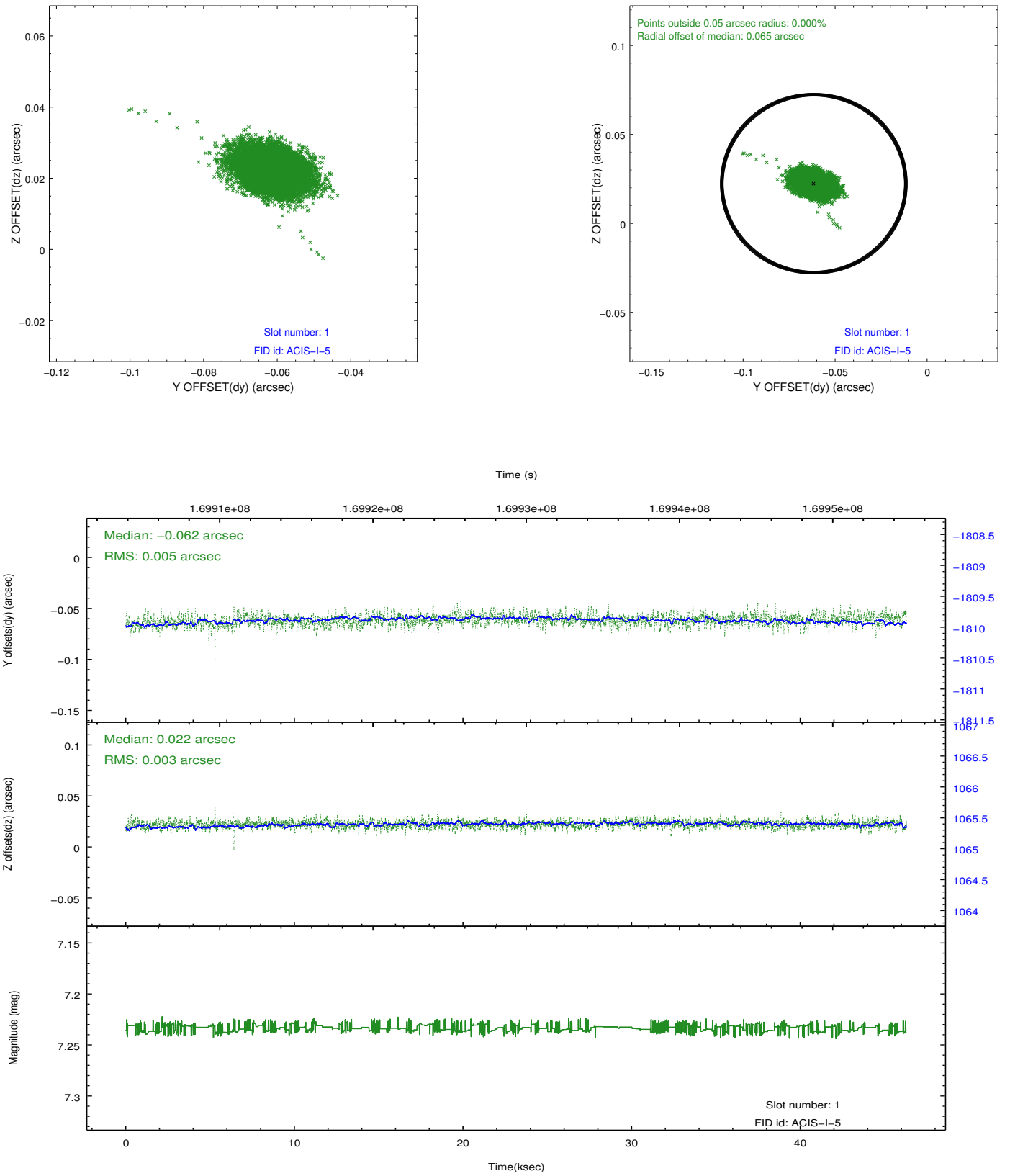


2.5 FID Slots

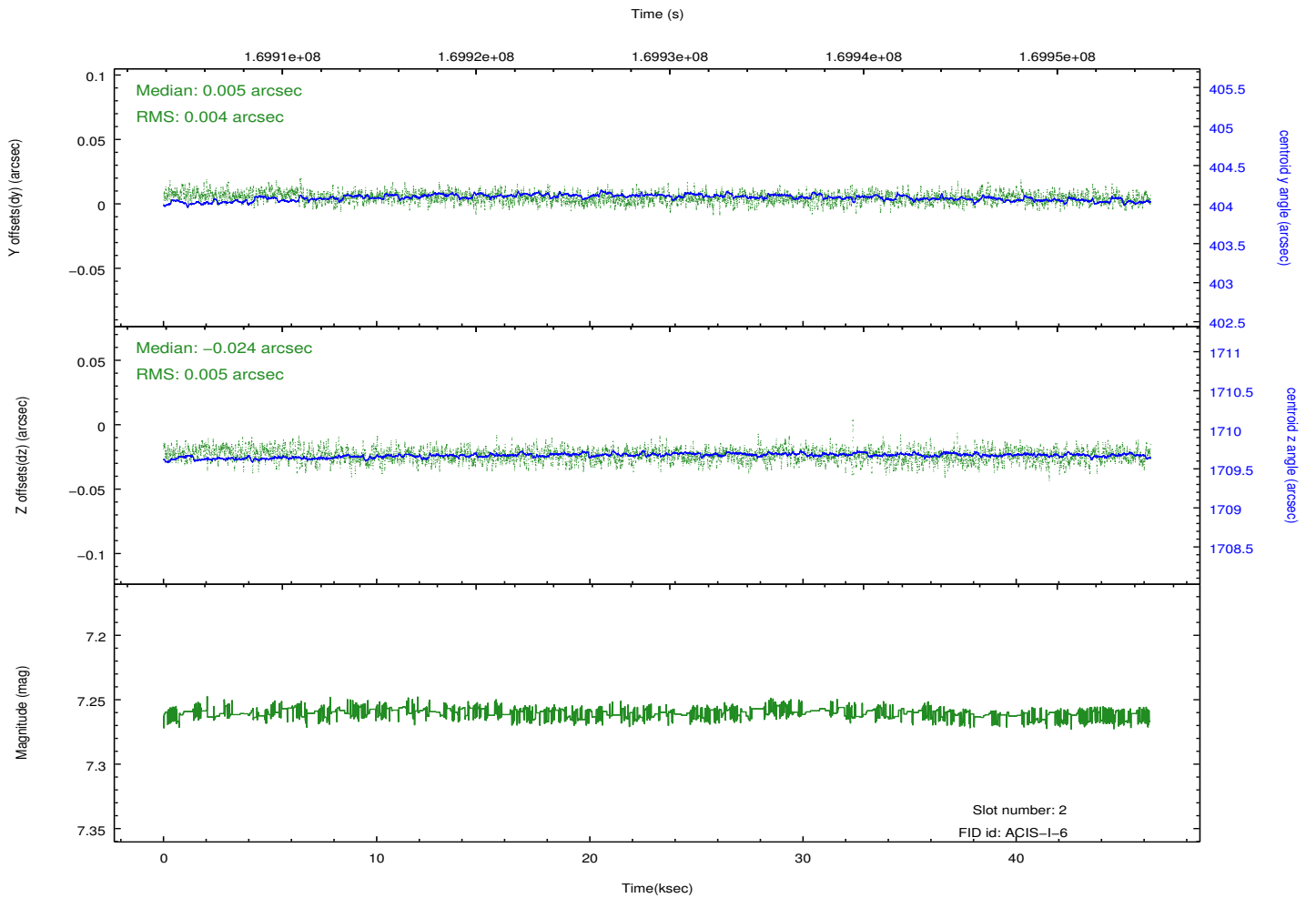
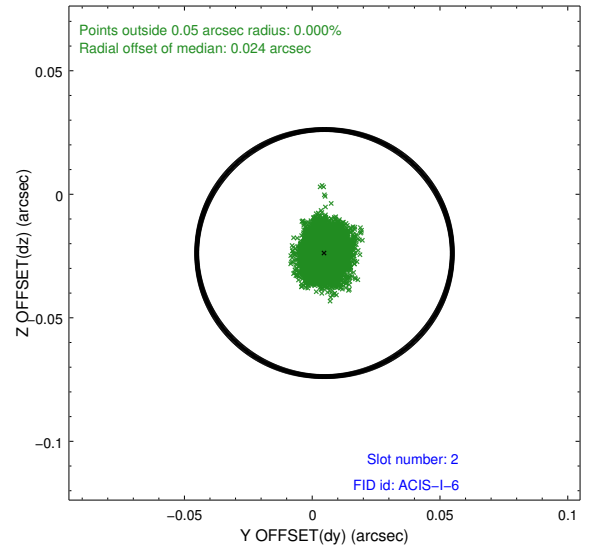
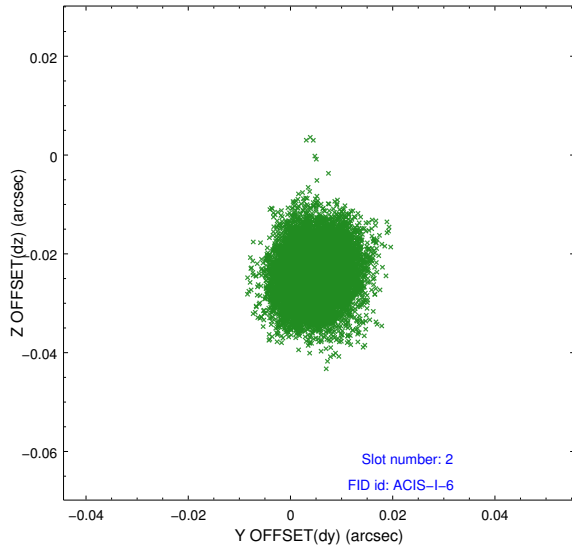
2.5.1 Slot 0



2.5.2 Slot 1



2.5.3 Slot 2



A Summary

A.1 Status

V&V Scientist	Jen Lauer
V&V Date (YYYY-MM-DD)	2012.11.15
V&V Edition	1
V&V Disposition and Status	OK
V&V Charge Time	45.883

A.2 Comments