

V&V Reference Report

L2 ASCDS Version : 8.4.5

Observation 4189 - L2 Version 3
Chandra X-Ray Center

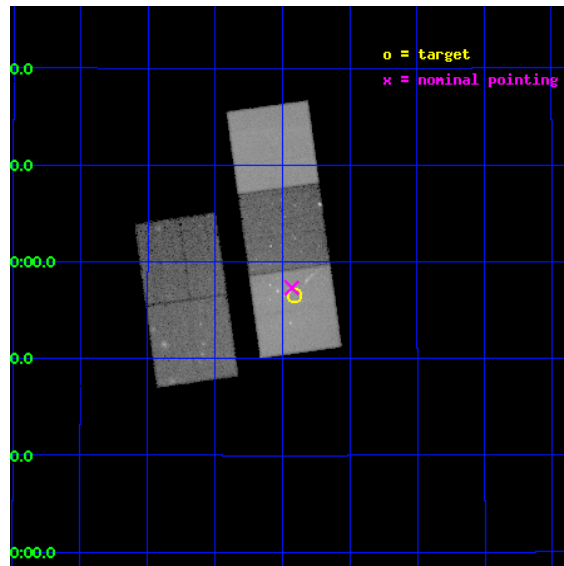
L2 Processing Date : Oct 21 2012

Contents

1	Front	2
2	OBI	3
2.1	OBI	3
2.1.1	Images	3
2.1.2	Bias	3
2.1.3	Parameters	4
2.1.4	Events	4
2.2	Compared Parameters	5
2.3	Aspect	6
2.4	Star Slots	9
2.4.1	Slot 3	9
2.4.2	Slot 4	10
2.4.3	Slot 5	11
2.4.4	Slot 6	12
2.4.5	Slot 7	13
2.5	FID Slots	14
2.5.1	Slot 0	14
2.5.2	Slot 1	15
2.5.3	Slot 2	16
A	Summary	17
A.1	Status	17
A.2	Comments	17

1 Front

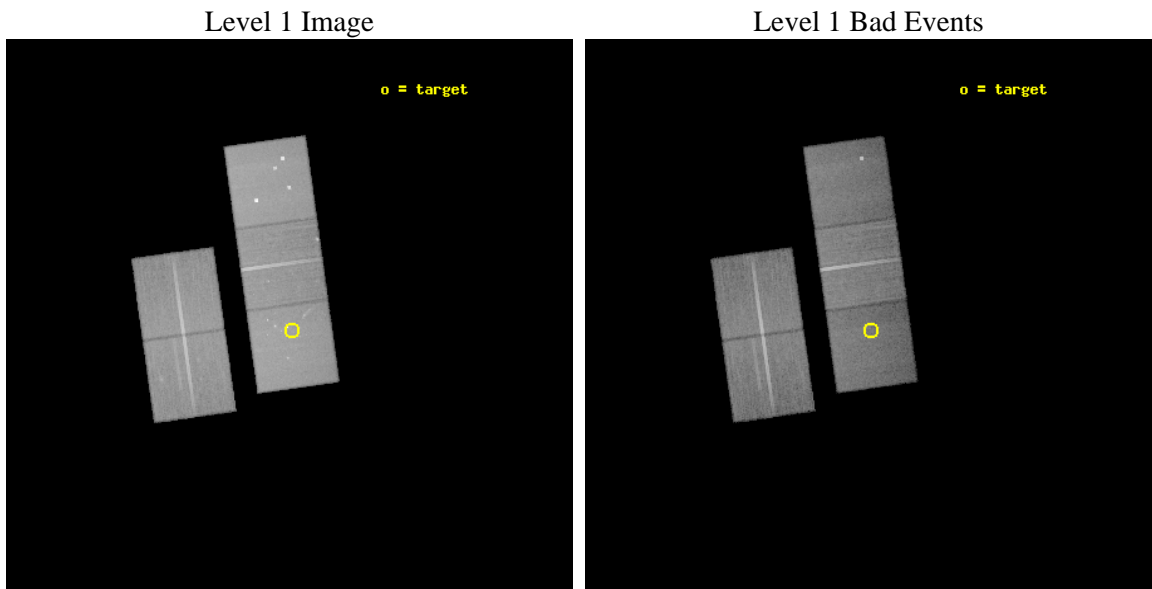
seq_num	800345	Sequence number
obs_id	4189	Observation id
title	OBSERVING THE X-RAY LUMINOUS GALAXY CORONAE IN A1367	Proposal titl
observer	Dr. Alexey Vikhlinin	Principal investigator
object	A1367 NW	Source name
dtycycle	0	
cycle	P	events from which exps? Prim/Second/Both
ra_targ	175.97875	Observer's specified target RA [deg]
dec_targ	19.941667	Observer's specified target Dec [deg]
ra_nom	175.98260271198	Nominal RA [deg]
dec_nom	19.95530418182	Nominal Dec [deg]
roll_nom	82.054817310385	Nominal Roll [deg]
revision	3	Processing version of data
ontime	48111.999907464	Sum of GTIs [s]
livetime	47483.381209134	Livetime [s]
ontime2	48102.576976806	Sum of GTIs [s]
ontime3	48096.295026124	Sum of GTIs [s]
ontime5	48111.999907464	Sum of GTIs [s]
ontime6	48108.85892725	Sum of GTIs [s]
ontime7	48111.999907464	Sum of GTIs [s]
l2events	450149	Number of level 2 events



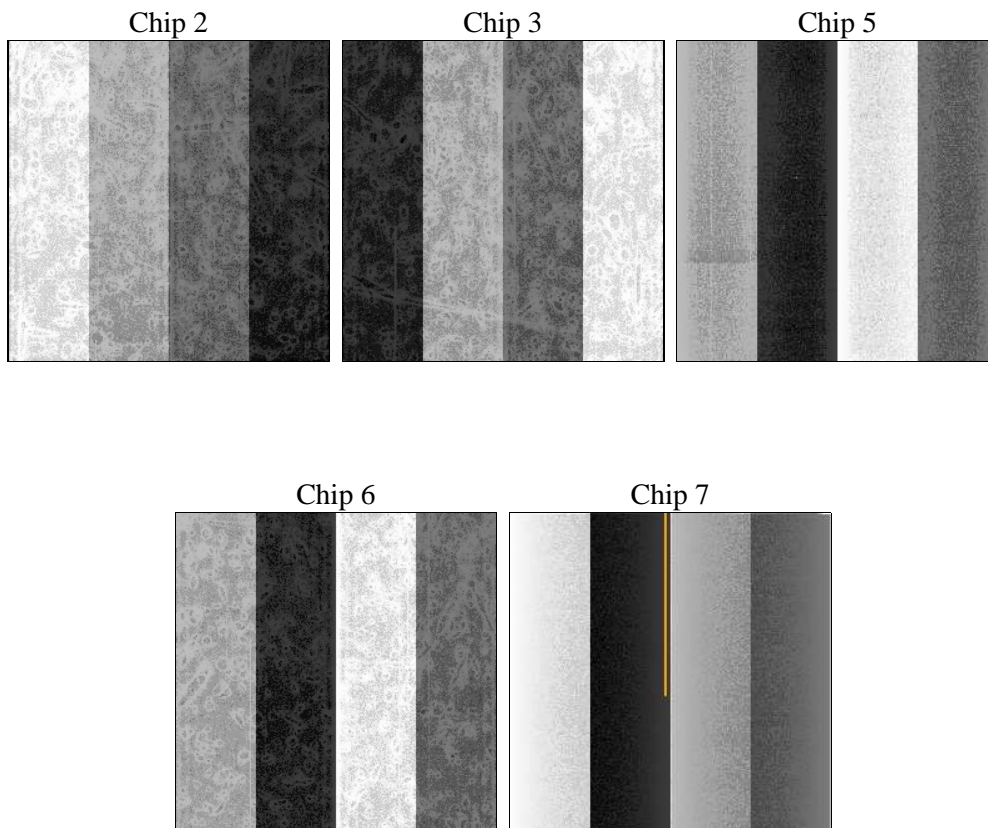
2 OBI

2.1 OBI

2.1.1 Images



2.1.2 Bias



2.1.3 Parameters

obi_num	0	Obi number	sched_exp_time	48000.000000	[s] Scheduled observation exposure time
ascdsver	8.4.5	Processing system revision	ontime	48111.999907464	Sum of GTIs [s]
caldbver	4.5.2	 	ontime2	48102.576976806	Sum of GTIs [s]
date	2012-10-21T07:29:40	Date and time of file creation	ontime3	48096.295026124	Sum of GTIs [s]
revision	3	Processing version of data	ontime5	48111.999907464	Sum of GTIs [s]
			ontime6	48108.85892725	Sum of GTIs [s]
			ontime7	48111.999907464	Sum of GTIs [s]
			l1events	1489429	Number of level 1 events

2.1.4 Events

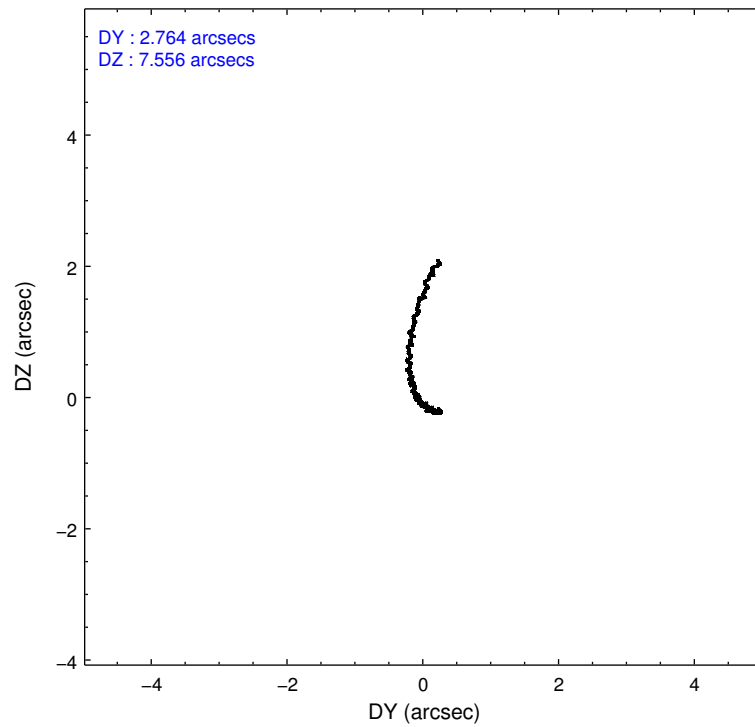
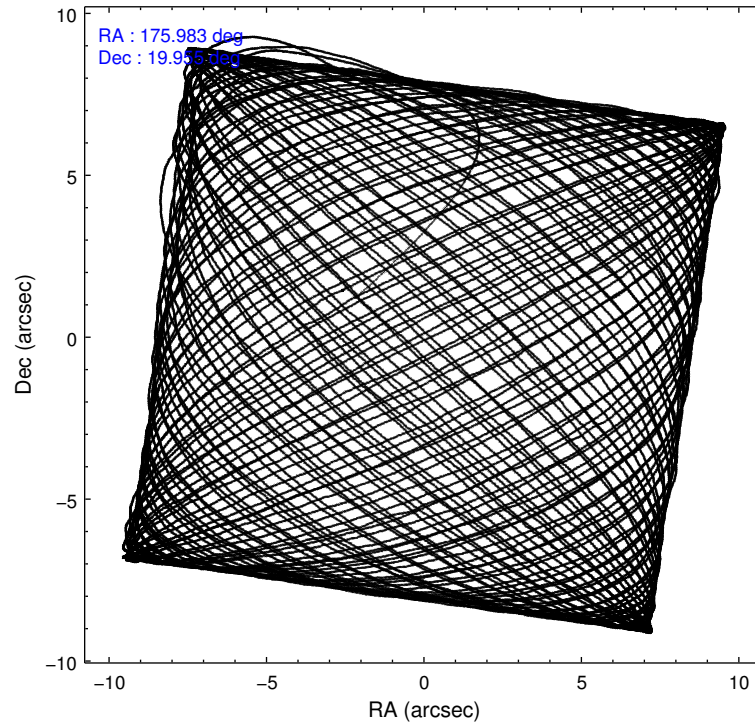
	ccd 2	ccd 3	ccd 5	ccd 6	ccd 7
level 1 events	264264	266427	361492	270906	326340
rejected events	230283	218129	169894	226288	149655
rejected %	87%	81%	46%	83%	45%

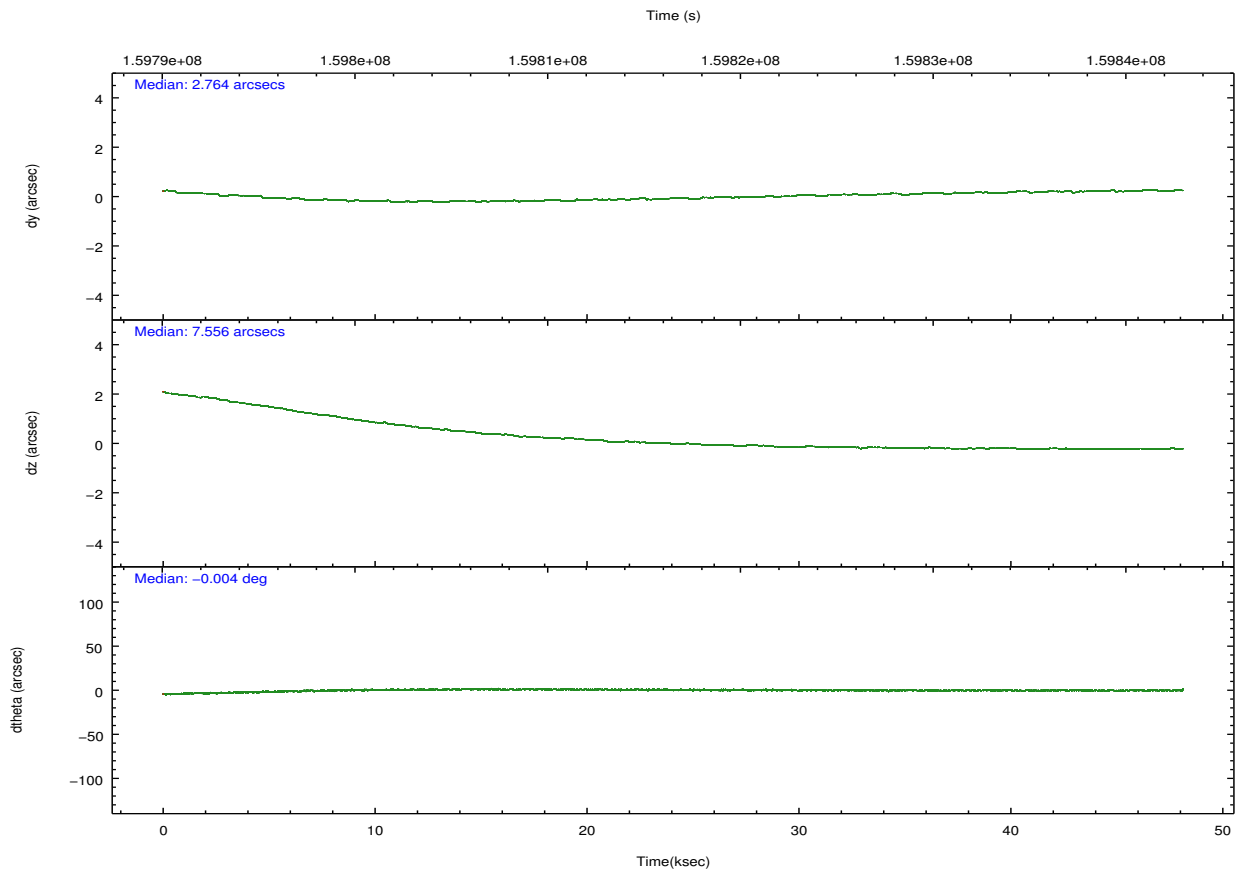
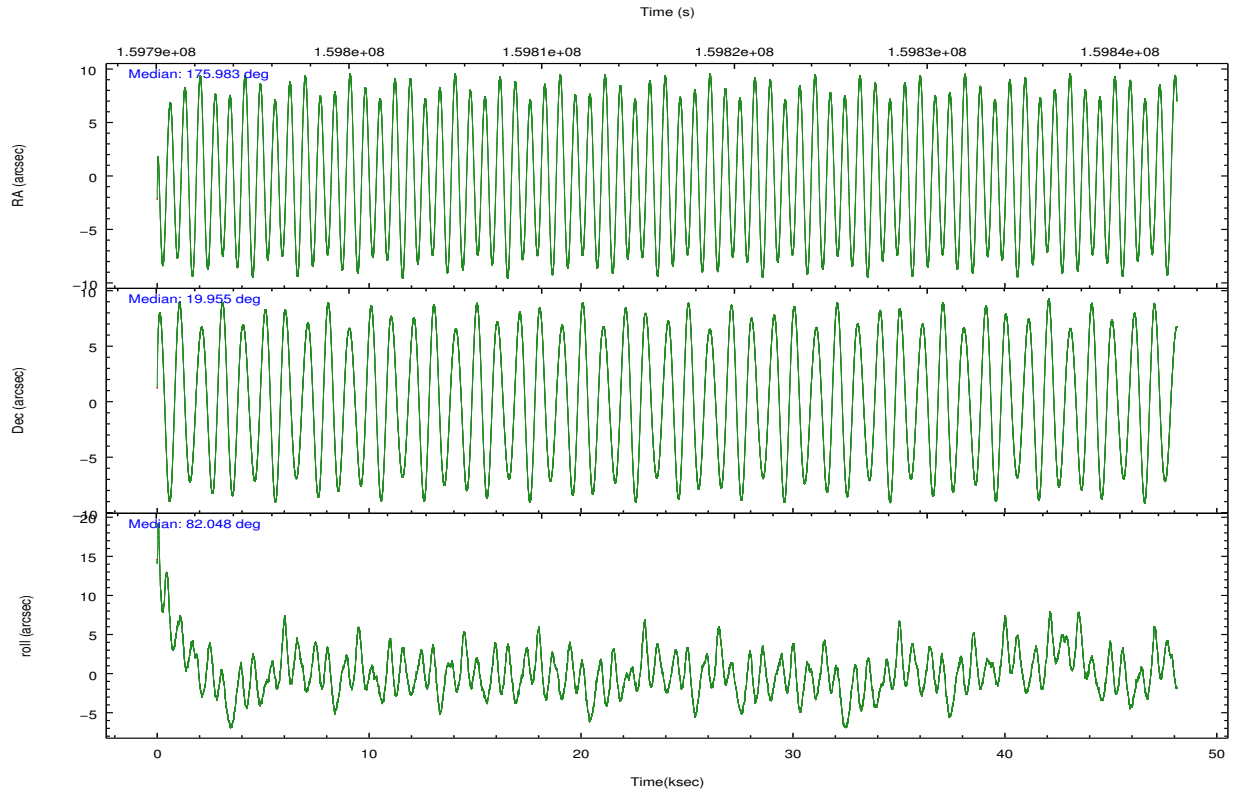
	ccd 2	ccd 3	ccd 5	ccd 6	ccd 7
grade 0 events	17470	29879	35264	25117	27317
	6%	11%	9%	9%	8%
grade 1 events	166	197	371	190	248
	0%	0%	0%	0%	0%
grade 2 events	6262	7103	53472	7326	38362
	2%	2%	14%	2%	11%
grade 3 events	3005	3464	8810	3436	18183
	1%	1%	2%	1%	5%
grade 4 events	3002	3327	8560	3370	17741
	1%	1%	2%	1%	5%
grade 5 events	7882	9359	28299	9868	29408
	2%	3%	7%	3%	9%
grade 6 events	4479	4866	86901	5677	76248
	1%	1%	24%	2%	23%
grade 7 events	221998	208232	139815	215922	118833
	84%	78%	38%	79%	36%

2.2 Compared Parameters

Parameter	Planned	Actual	Parameter	Planned	Actual
Instrument	ACIS	ACIS	Obspar format version number	7	7
Detector	ACIS-23567	ACIS-23567	Obspar file type	PREDICTED	ACTUAL
Grating	NONE	NONE	Obspar update status	NONE	UPDATED
Data mode	VFAINT	VFAINT	Number of optional ACIS chips dropped	0	0
Observation mode	POINTING	POINTING	On-chip summing requested	N	N
[deg] Pointing RA	175.993844	175.9826027119771	Subarray requested	NONE	NONE
[deg] Pointing Dec	19.930220	19.95530418181984	Alternating exposures requested	N	N
[deg] Pointing Roll	81.894352	82.05481731038537	[s] Primary exposure time	0.000000	3.1
[mm] SIM focus pos	-0.684267	-0.6828225247311905			
[mm] SIM defocus	0	0.001444936568705701			
[mm] SIM translation stage pos	-190.132523	-190.1400660498719			
[mm] SIM translation stage offset	0	0.00754346686406393			
[s] Observation start time (MET)	159792567.184000	159791416.877			
Observation start date	2003-01-24T10:48:23	2003-01-24T10:30:16			
[s] Observation end time (MET)	159840567.184000	159841259.55409			
Observation end date	2003-01-25T00:08:23	2003-01-25T00:20:59			
Read mode	TIMED	TIMED			

2.3 Aspect



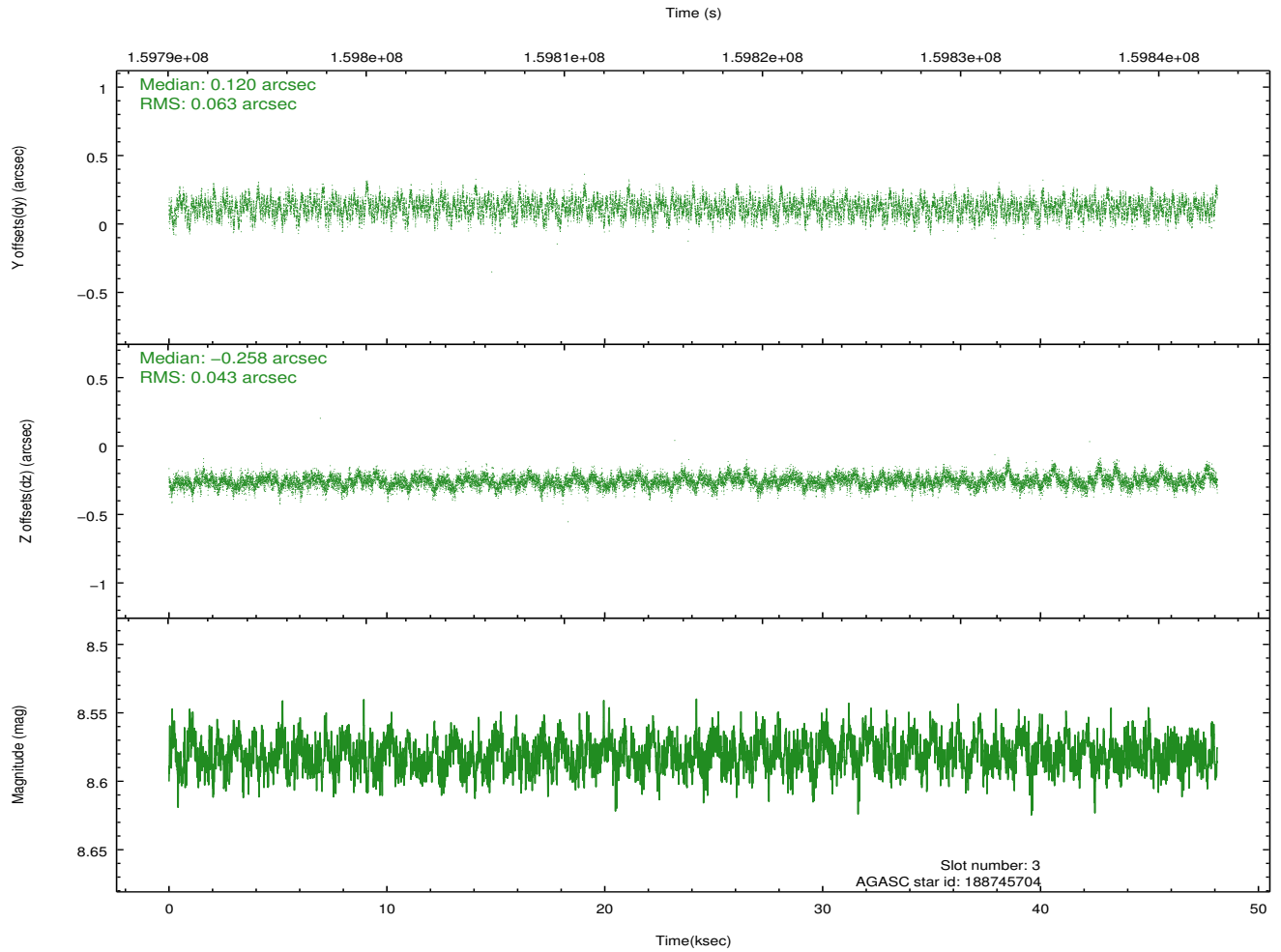
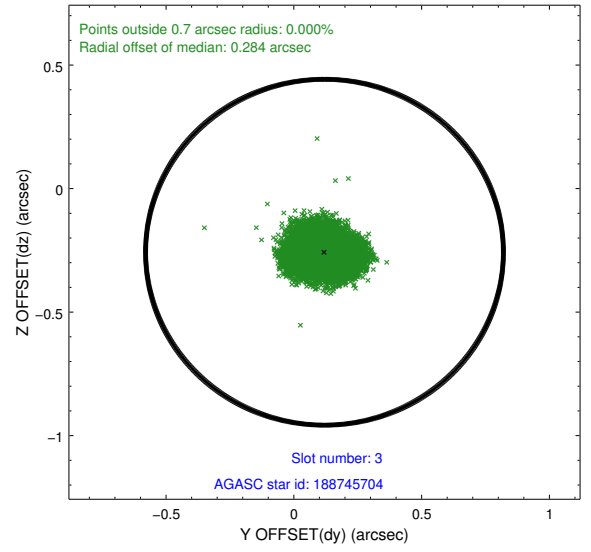
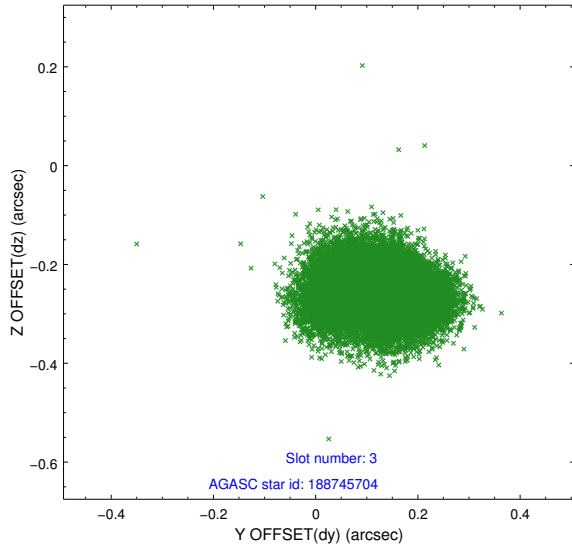


Slot Statistics

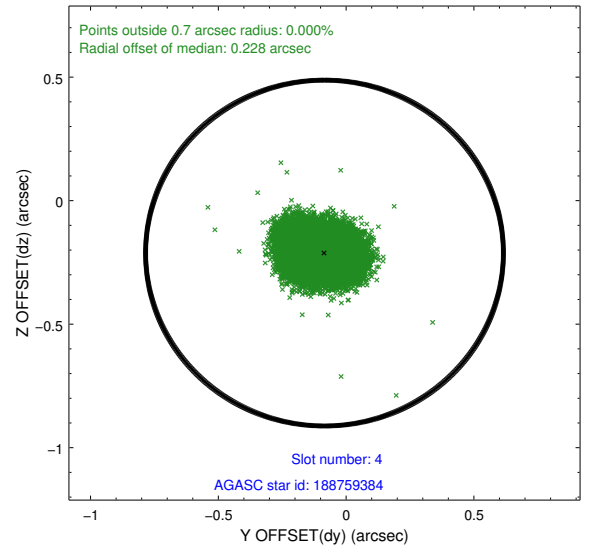
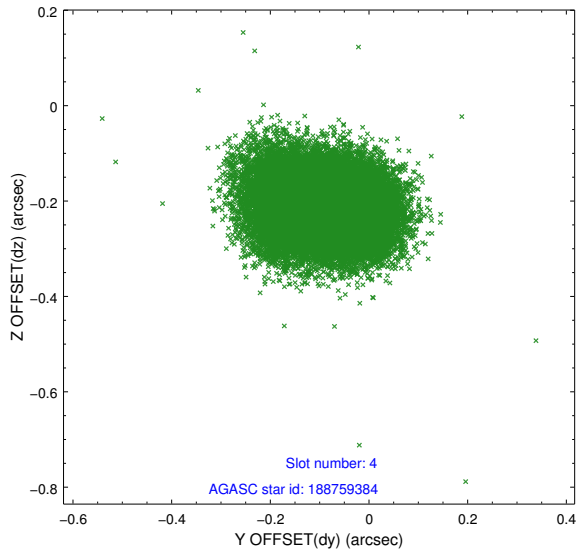
slot	status	id	mag	n_pts	med_dy	med_dz	dr1	dr2	ra	dec	mean_y	mean_z
0	FID	ACIS-S-2	7.12	11737	-0.021	-0.010	0.009	0.022	0.000000	0.000000	-755.42	-1729.08
1	FID	ACIS-S-4	7.20	11737	-0.003	0.013	0.012	0.024	0.000000	0.000000	2157.88	179.45
2	FID	ACIS-S-5	7.24	11737	-0.005	0.005	0.010	0.017	0.000000	0.000000	-1808.27	173.09
3	GUIDE	188745704	8.58	23465	0.120	-0.258	0.081	0.133	175.394573	19.530748	-1706.77	1810.44
4	GUIDE	188759384	9.34	23457	-0.085	-0.212	0.098	0.156	175.414725	20.405821	1422.77	2176.67
5	GUIDE	189137280	10.12	23348	-0.027	0.206	0.143	0.237	176.678053	19.925060	313.32	-2293.94
6	GUIDE	189139352	8.75	23458	0.123	0.165	0.080	0.130	176.255936	19.500124	-1406.30	-1098.65
7	GUIDE	189147640	7.60	23471	-0.129	0.108	0.062	0.101	176.540349	20.319236	1649.87	-1628.24

2.4 Star Slots

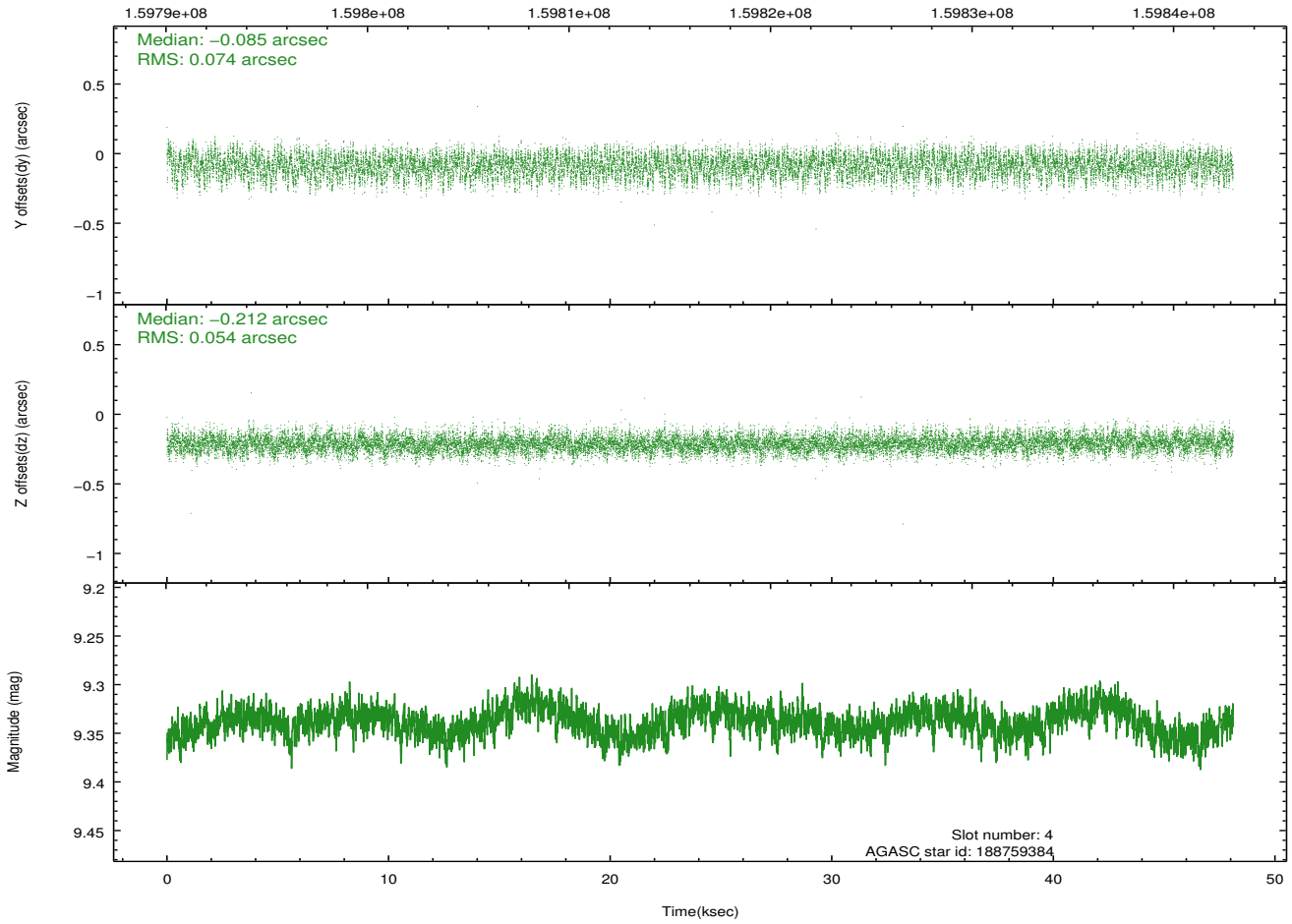
2.4.1 Slot 3



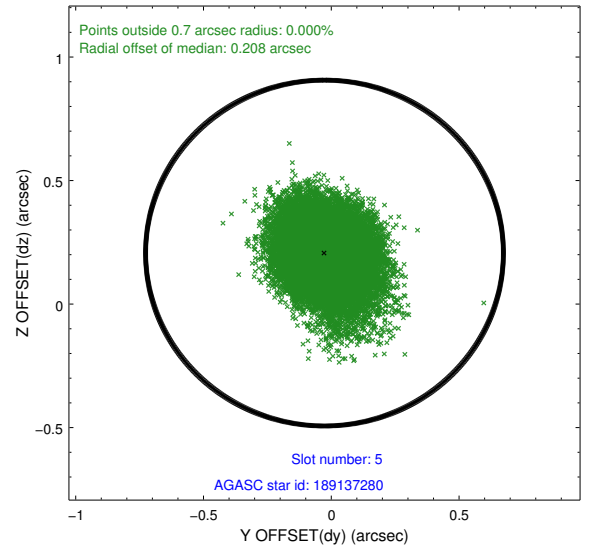
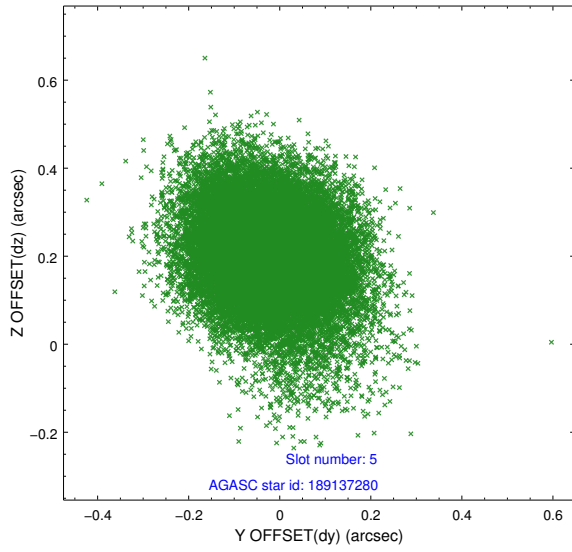
2.4.2 Slot 4



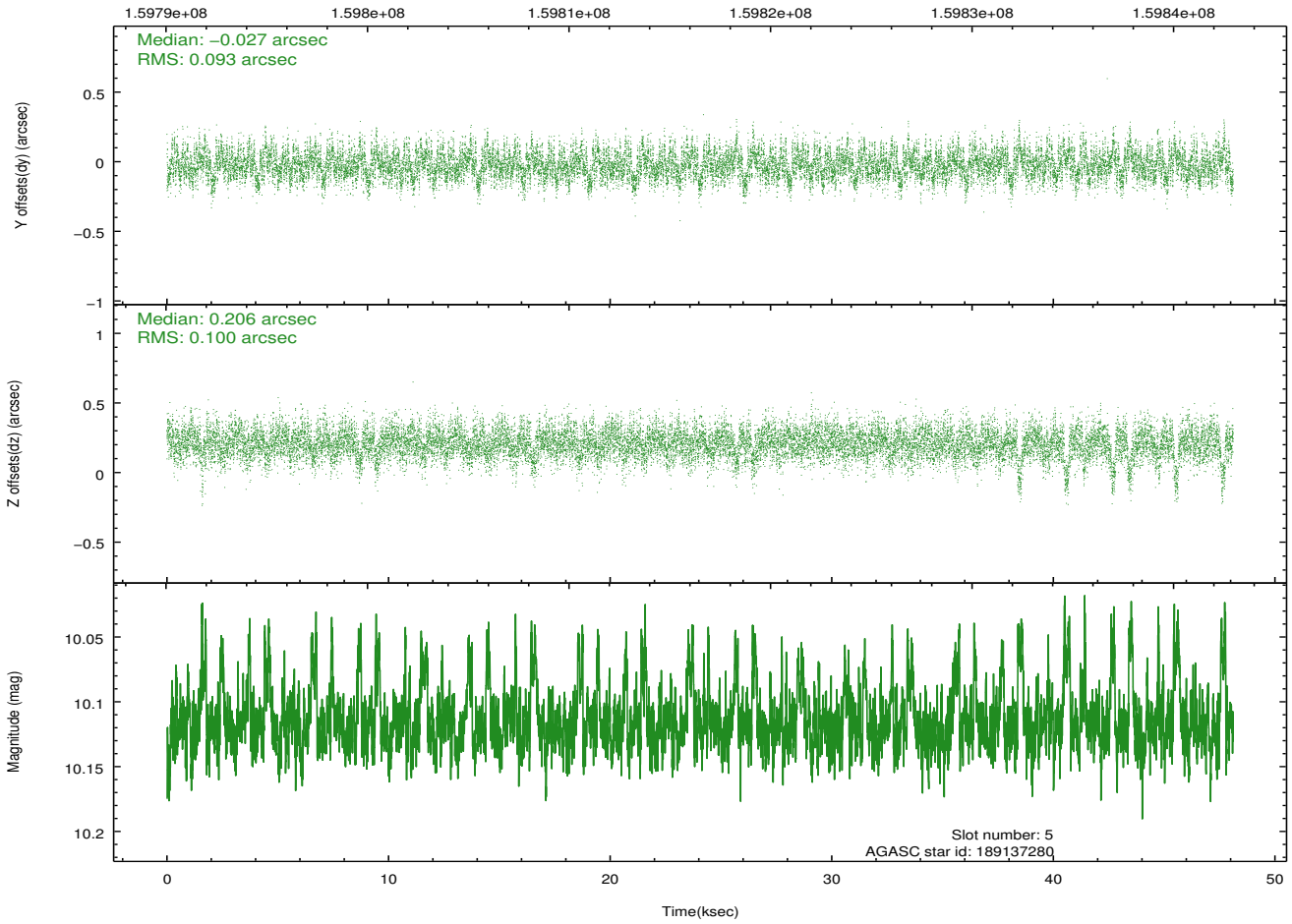
Time (s)



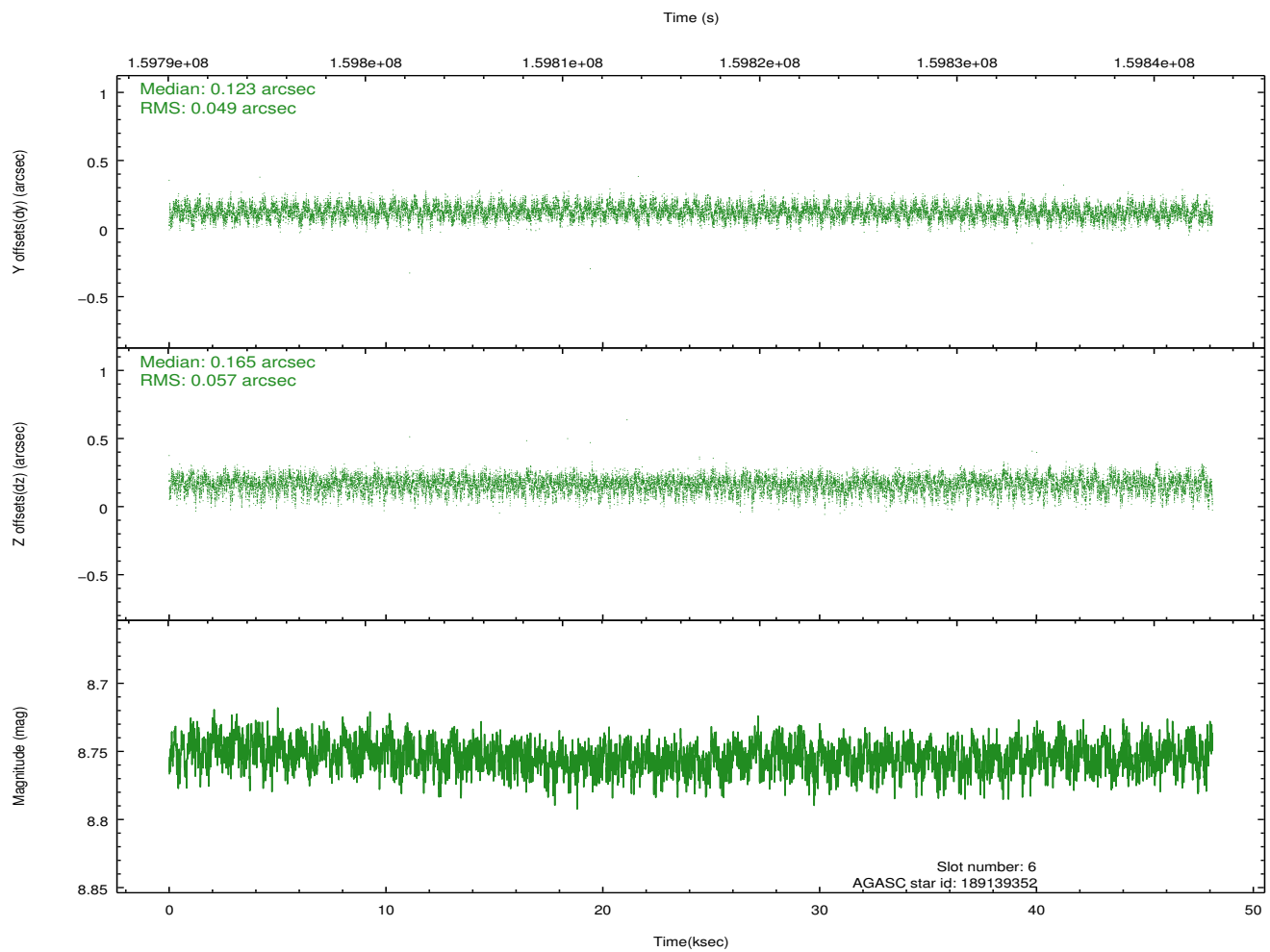
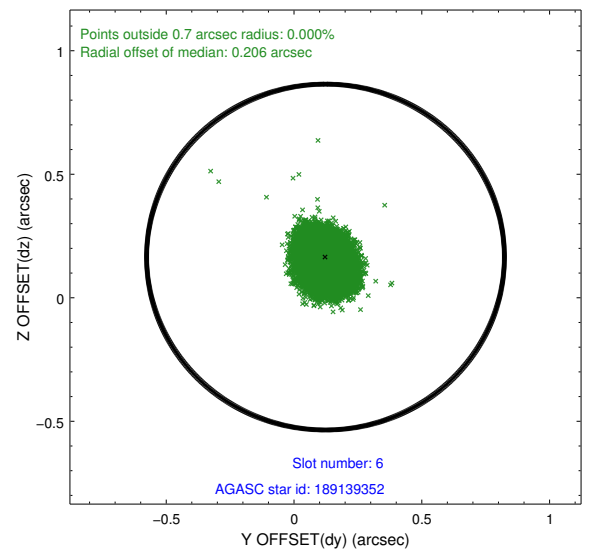
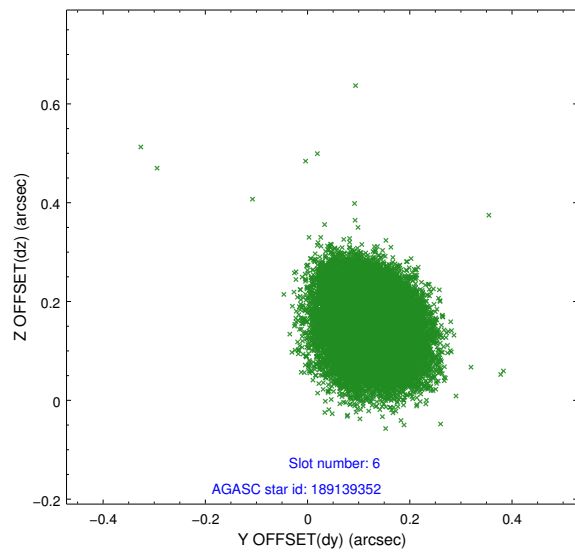
2.4.3 Slot 5



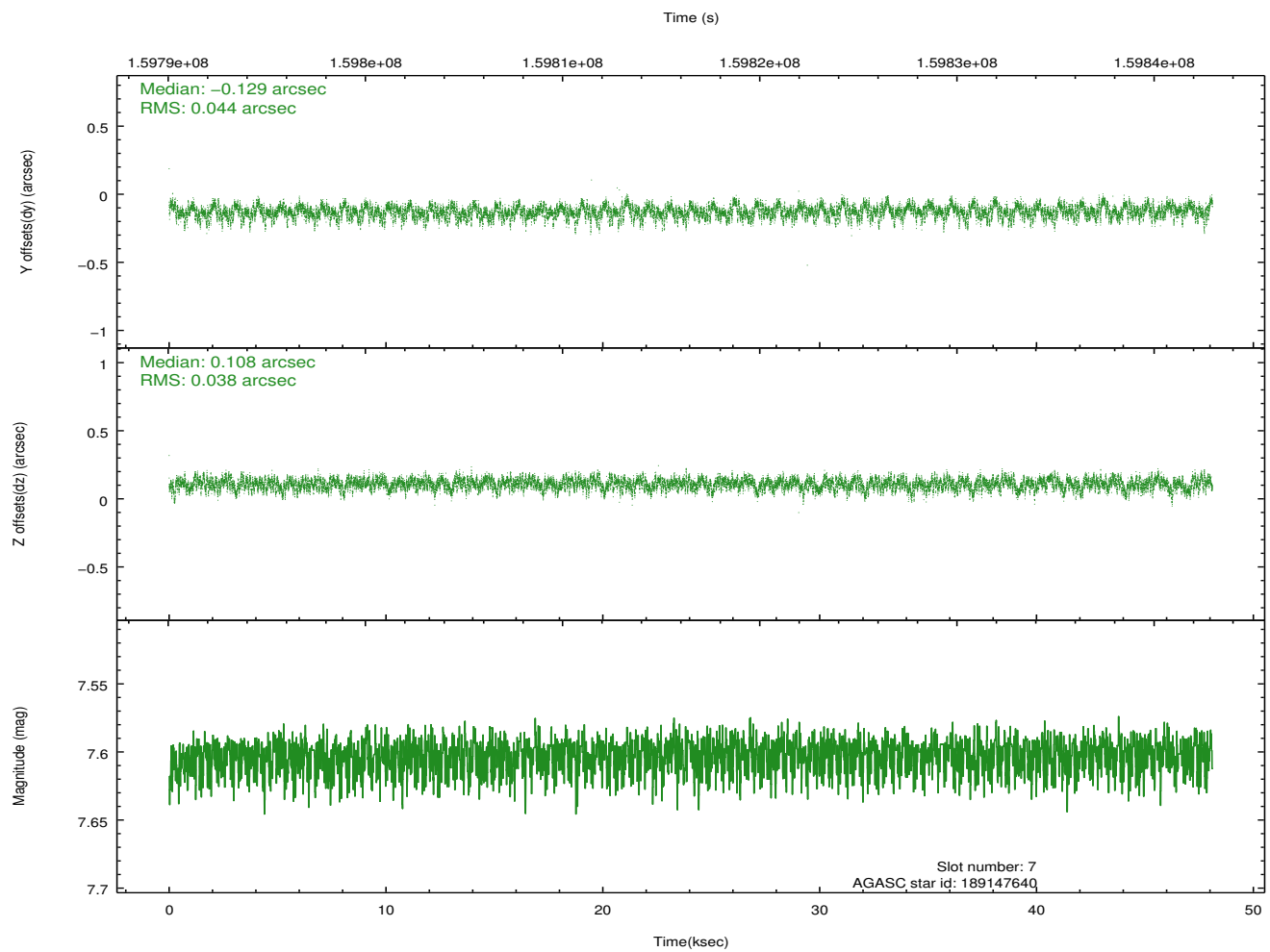
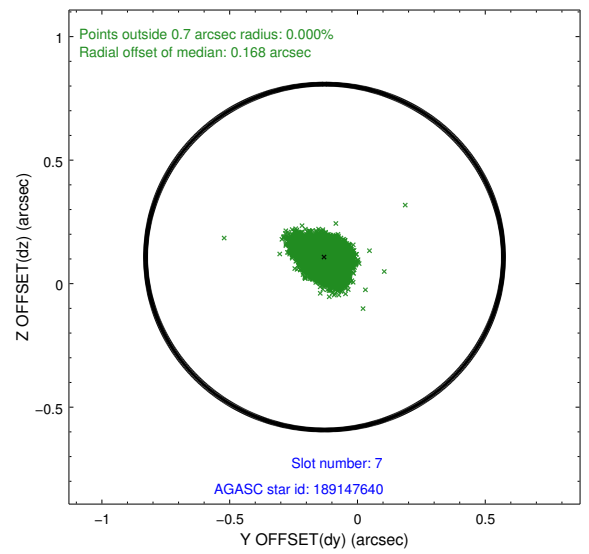
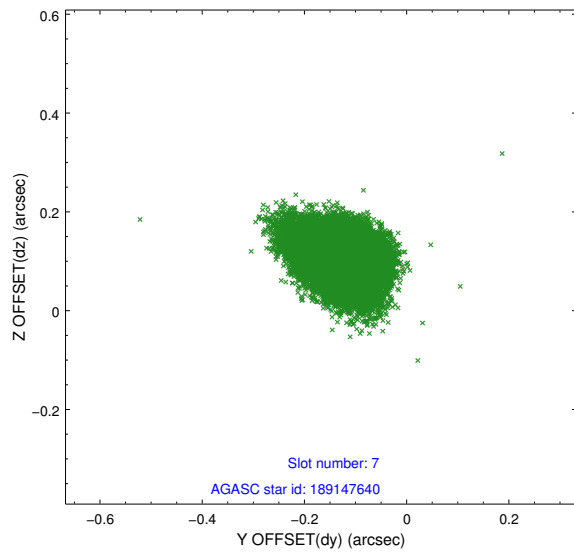
Time (s)



2.4.4 Slot 6

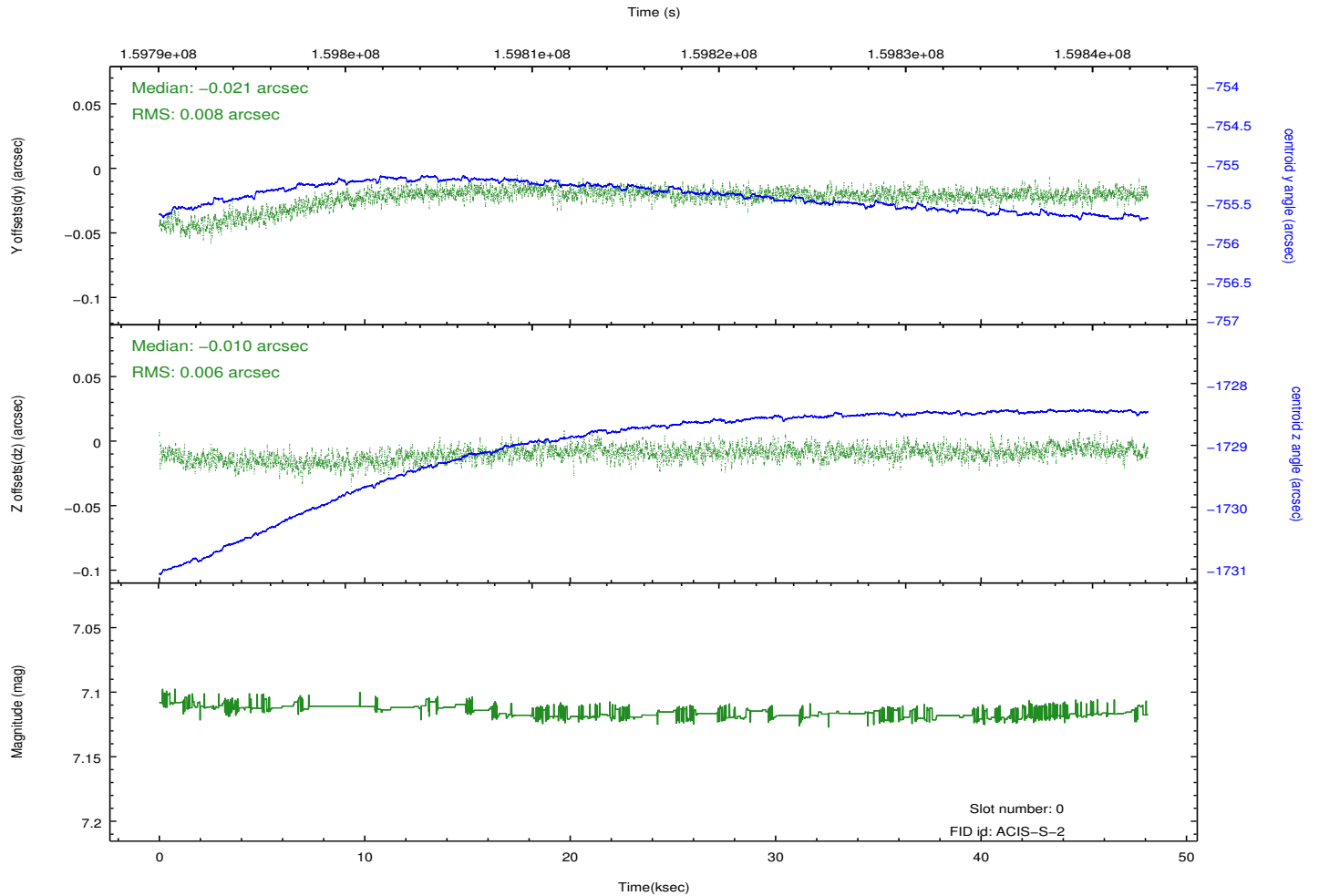
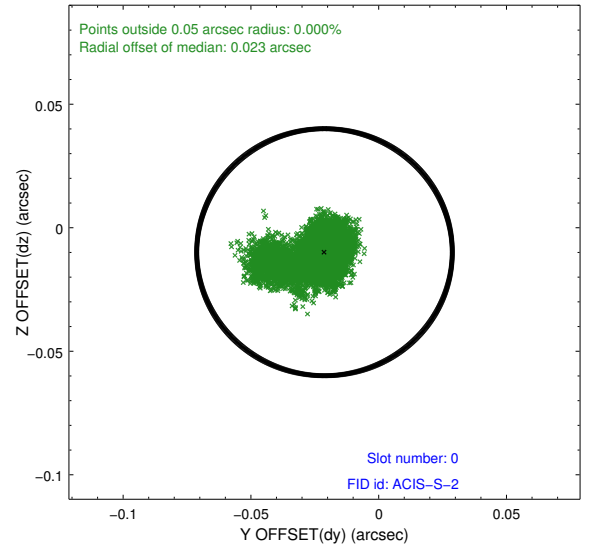
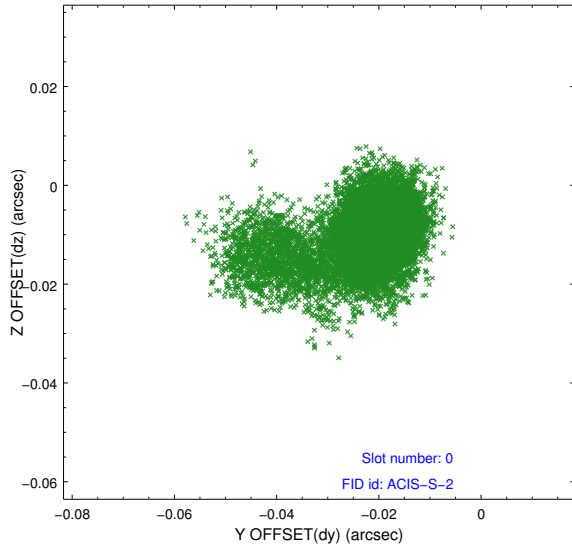


2.4.5 Slot 7

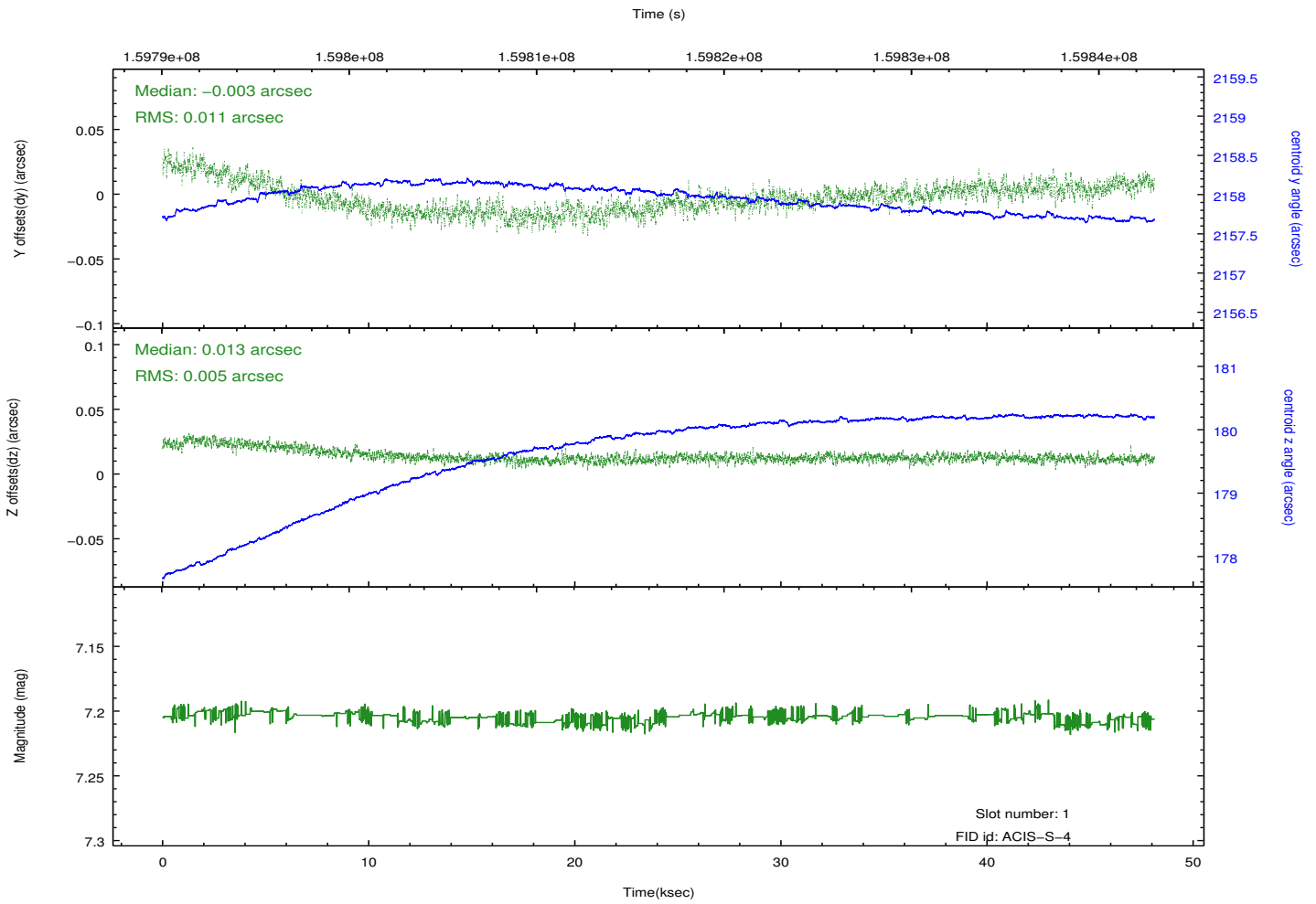
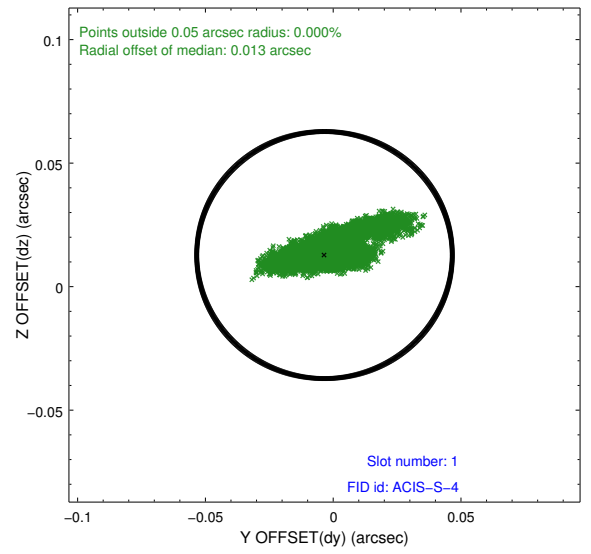
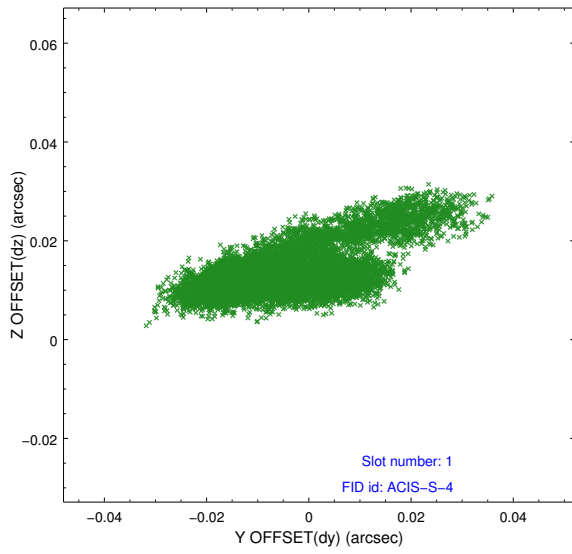


2.5 FID Slots

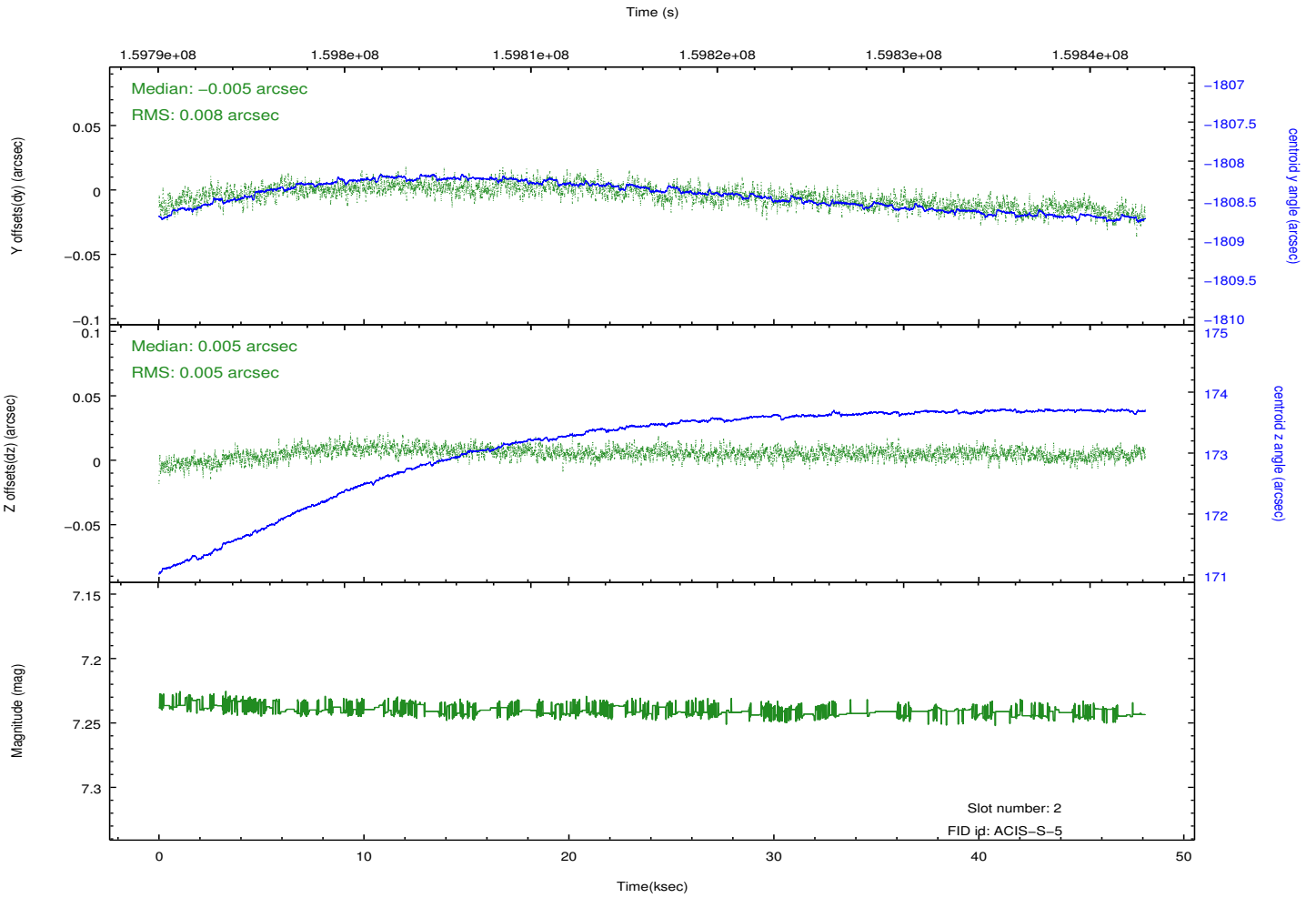
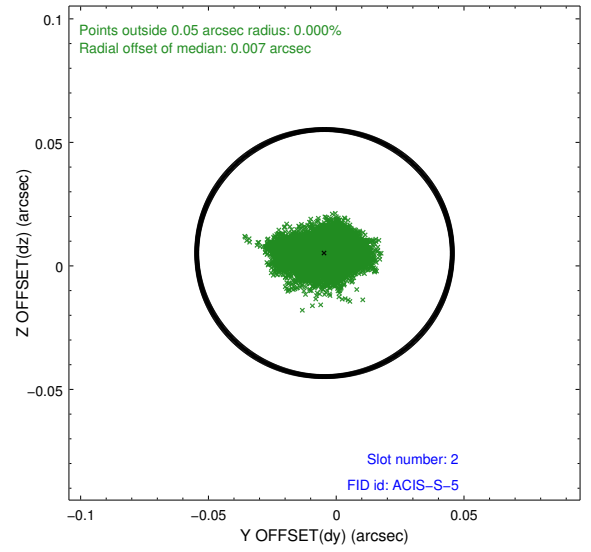
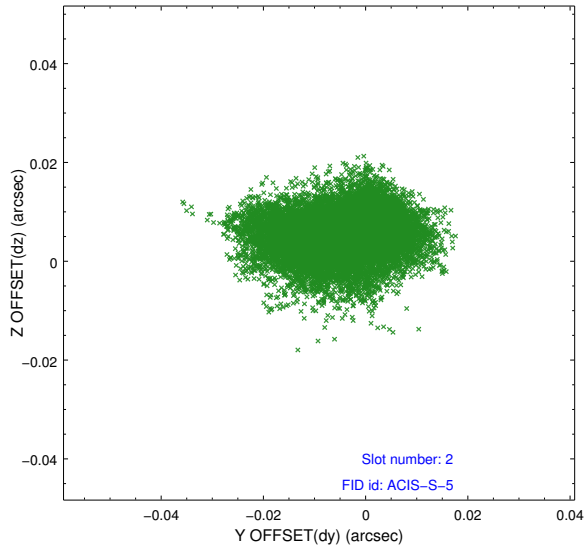
2.5.1 Slot 0



2.5.2 Slot 1



2.5.3 Slot 2



A Summary

A.1 Status

V&V Scientist	Jen Lauer
V&V Date (YYYY-MM-DD)	2012.11.01
V&V Edition	1
V&V Disposition and Status	OK
V&V Charge Time	48.111

A.2 Comments