

V&V Reference Report

L2 ASCDS Version : 8.4.5

Observation 4279 - L2 Version 3
Chandra X-Ray Center

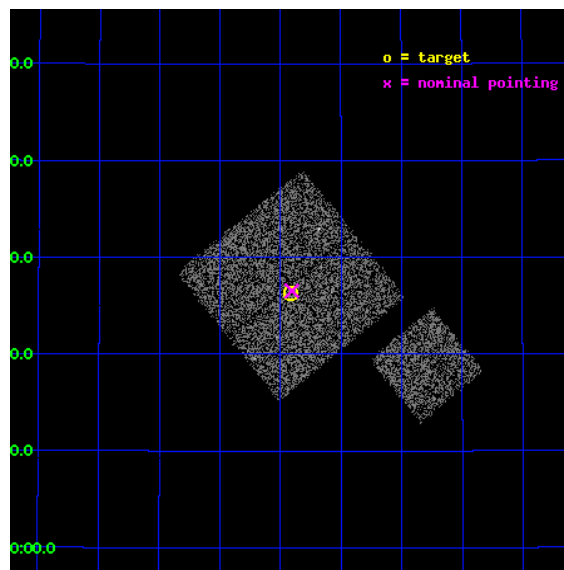
L2 Processing Date : Oct 25 2012

Contents

1	Front	2
2	OBI	3
2.1	OBI	3
2.1.1	Images	3
2.1.2	Bias	3
2.1.3	Parameters	4
2.1.4	Events	4
2.2	Compared Parameters	5
2.3	Aspect	6
2.4	Star Slots	9
2.4.1	Slot 3	9
2.4.2	Slot 4	10
2.4.3	Slot 5	11
2.4.4	Slot 6	12
2.4.5	Slot 7	13
2.5	FID Slots	14
2.5.1	Slot 0	14
2.5.2	Slot 1	15
2.5.3	Slot 2	16
A	Summary	17
A.1	Status	17
A.2	Comments	17

1 Front

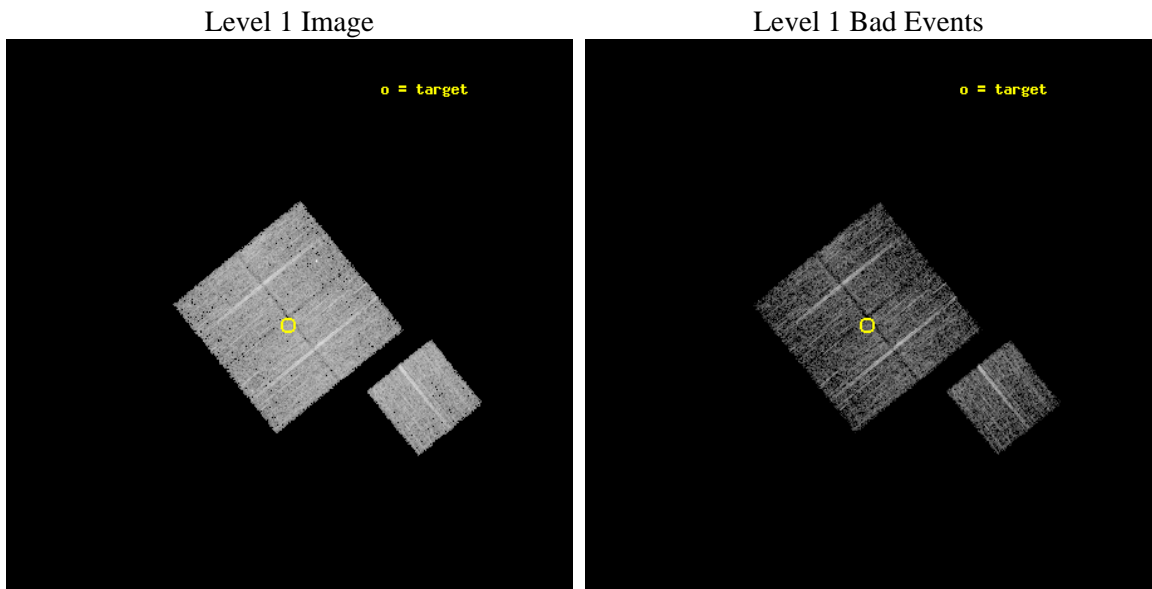
seq_num	900322	Sequence number
obs_id	4279	Observation id
title	A CHANDRA WIDE-FIELD SURVEY TO MAP THE COSMIC WEB AND INVESTIGATE THE EVOLUTION OF NUCLEAR ACCRETION	Proposal title
observer	Dr. Christine Jones	Principal investigator
object	SS57	Source name
dtcycle	0	
cycle	P	events from which exps? Prim/Second/Both
ra_targ	217.604097	Observer's specified target RA [deg]
dec_targ	32.438448	Observer's specified target Dec [deg]
ra_nom	217.60145851212	Nominal RA [deg]
dec_nom	32.442501674428	Nominal Dec [deg]
roll_nom	141.01011590517	Nominal Roll [deg]
revision	3	Processing version of data
ontime	5020.7728072703	Sum of GTIs [s]
livetime	4955.1727143041	Livetime [s]
ontime0	5020.6496872604	Sum of GTIs [s]
ontime1	5020.6907272637	Sum of GTIs [s]
ontime2	5020.731767267	Sum of GTIs [s]
ontime3	5020.7728072703	Sum of GTIs [s]
ontime6	5020.6086472571	Sum of GTIs [s]
l2events	15983	Number of level 2 events



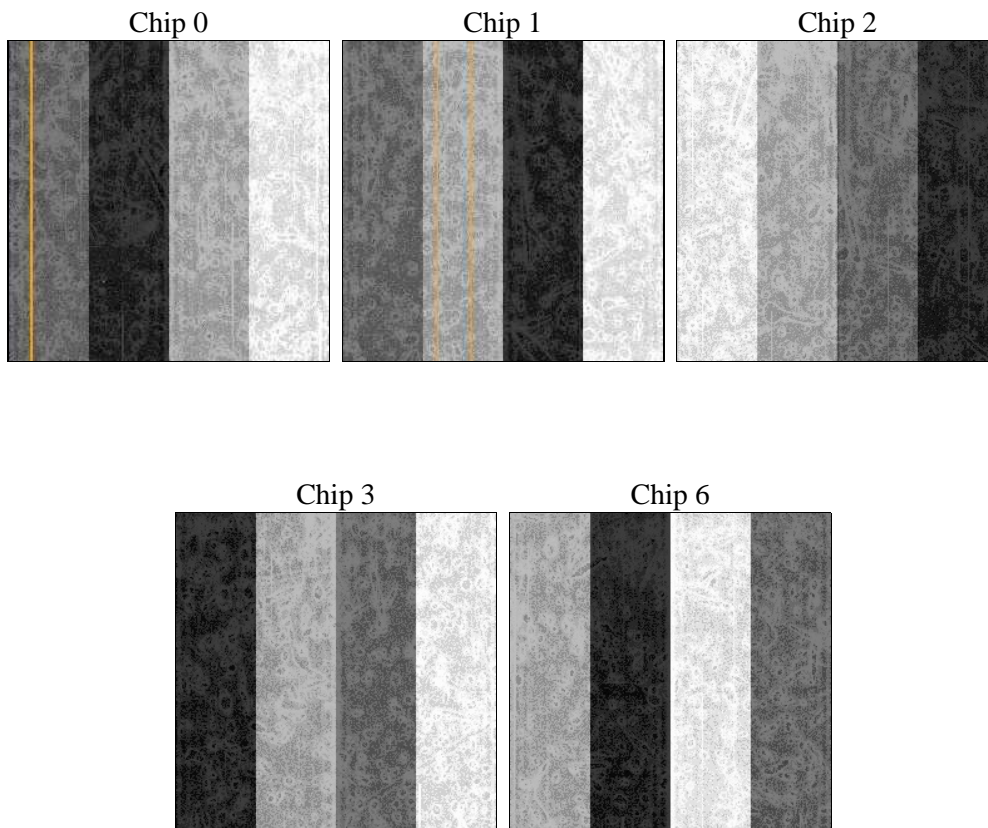
2 OBI

2.1 OBI

2.1.1 Images



2.1.2 Bias



2.1.3 Parameters

obi_num	1	Obi number	sched_exp_time	4900.000000	[s] Scheduled observation exposure time
ascdsver	8.4.5	Processing system revision	ontime	5020.7728072703	Sum of GTIs [s]
caldsver	4.5.2	 	ontime0	5020.6496872604	Sum of GTIs [s]
date	2012-10-25T15:32:16	Date and time of file creation	ontime1	5020.6907272637	Sum of GTIs [s]
revision	3	Processing version of data	ontime2	5020.731767267	Sum of GTIs [s]
			ontime3	5020.7728072703	Sum of GTIs [s]
			ontime6	5020.6086472571	Sum of GTIs [s]
			l1events	152797	Number of level 1 events

2.1.4 Events

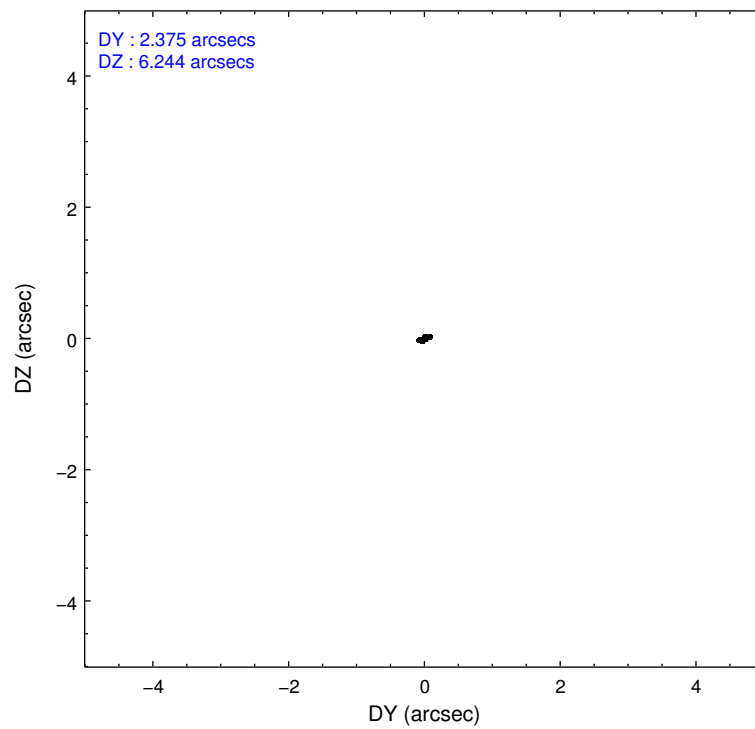
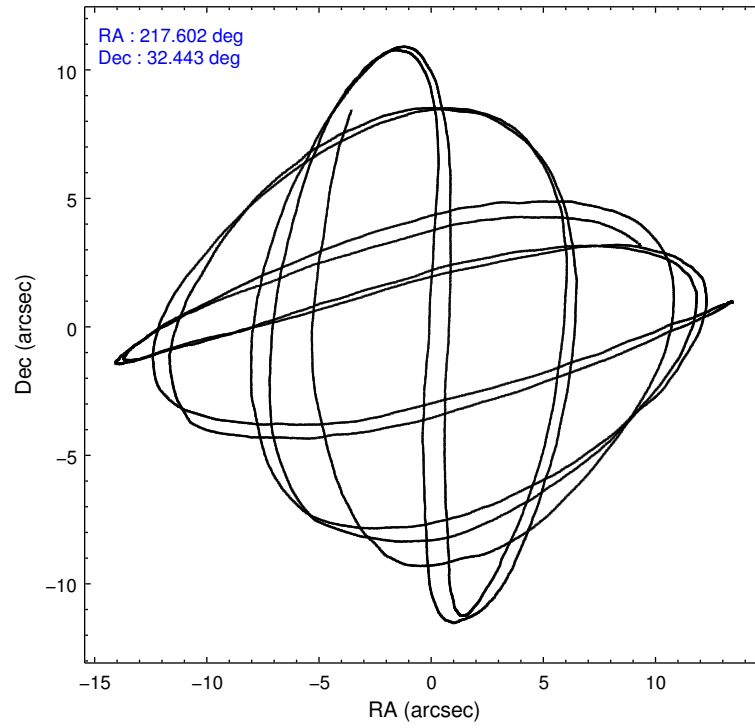
	ccd 0	ccd 1	ccd 2	ccd 3	ccd 6
level 1 events	29212	28431	32181	31015	31958
rejected events	25290	24562	28540	27395	28406
rejected %	86%	86%	88%	88%	88%

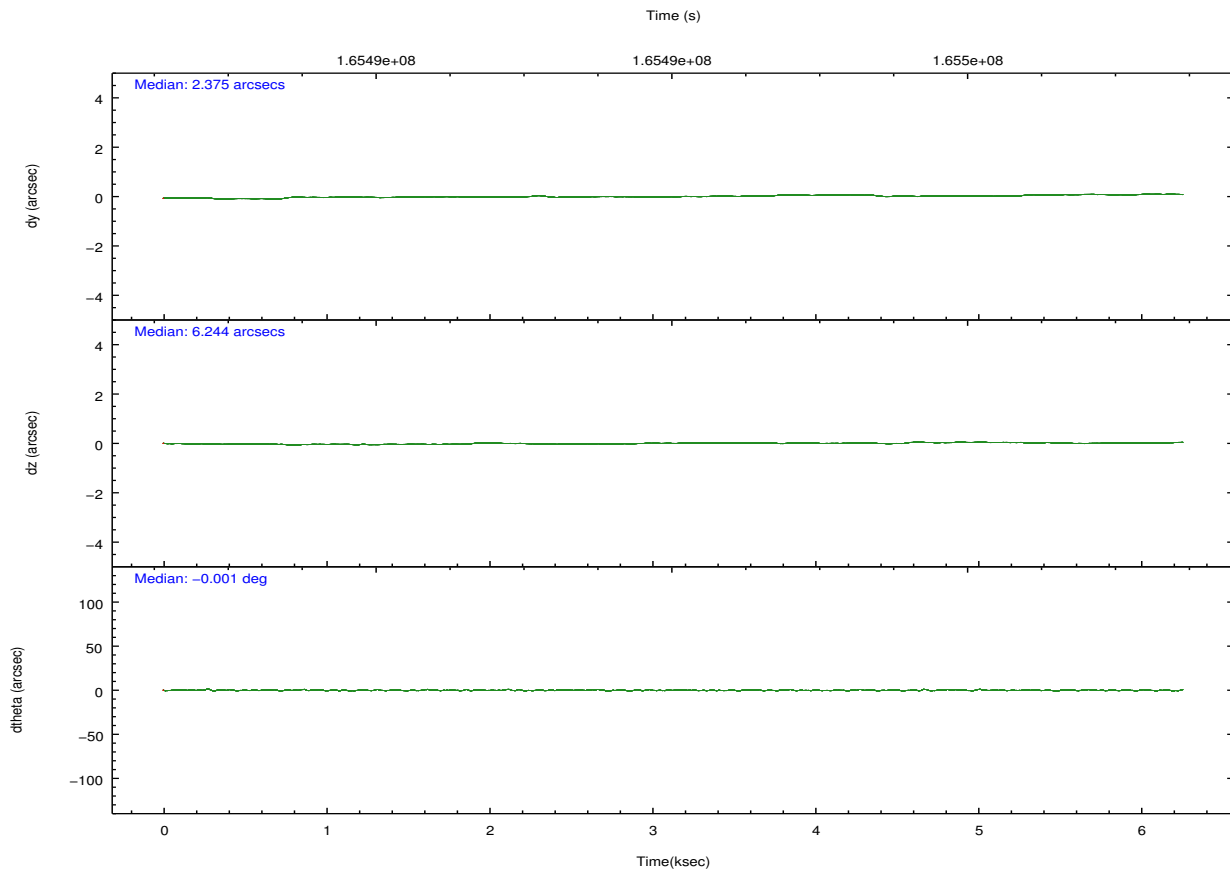
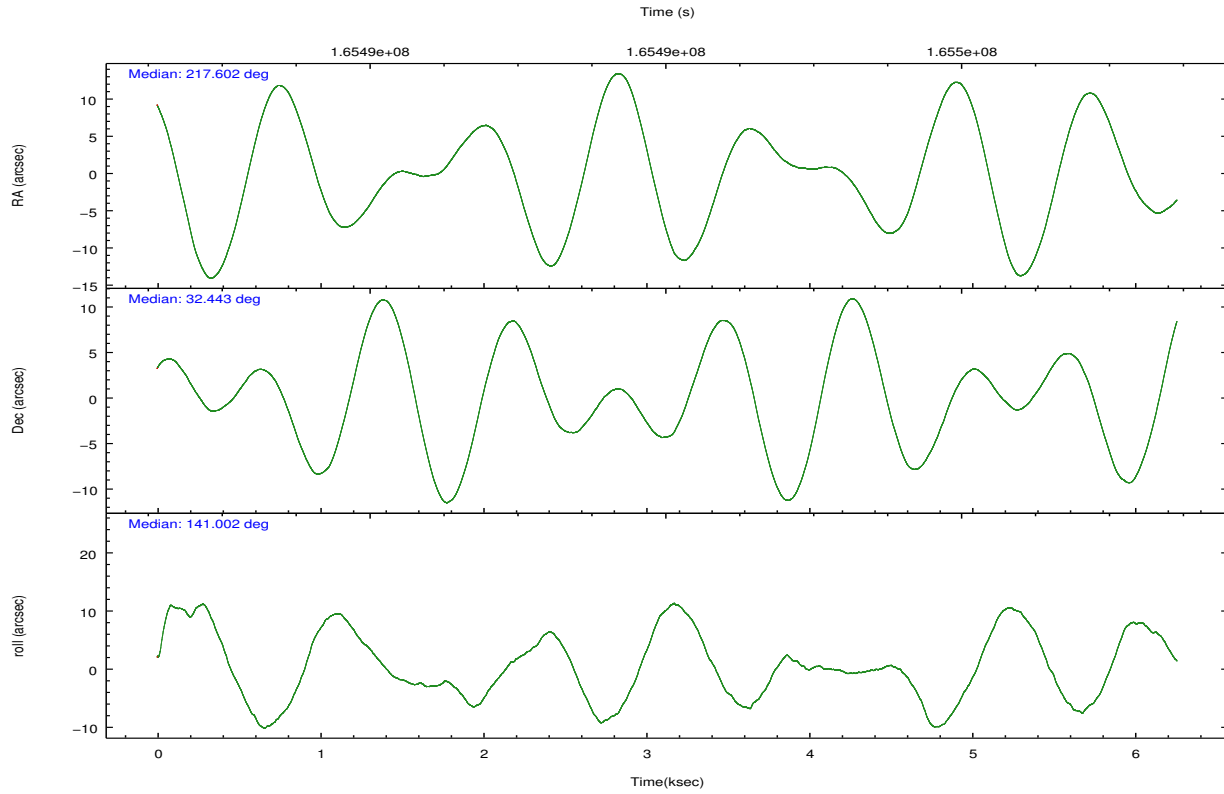
	ccd 0	ccd 1	ccd 2	ccd 3	ccd 6
grade 0 events	1810	1474	1659	1583	1375
	6%	5%	5%	5%	4%
grade 1 events	14	18	15	15	11
	0%	0%	0%	0%	0%
grade 2 events	797	854	723	737	771
	2%	3%	2%	2%	2%
grade 3 events	372	382	326	355	348
	1%	1%	1%	1%	1%
grade 4 events	338	392	338	335	366
	1%	1%	1%	1%	1%
grade 5 events	1217	1270	1179	1334	1388
	4%	4%	3%	4%	4%
grade 6 events	610	771	605	614	700
	2%	2%	1%	1%	2%
grade 7 events	24054	23270	27336	26042	26999
	82%	81%	84%	83%	84%

2.2 Compared Parameters

Parameter	Planned	Actual	Parameter	Planned	Actual
Instrument	ACIS	ACIS	Obspar format version number	7	7
Detector	ACIS-01236	ACIS-01236	Obspar file type	PREDICTED	ACTUAL
Grating	NONE	NONE	Obspar update status	NONE	UPDATED
Data mode	VFAINT	VFAINT	Number of optional ACIS chips dropped	0	0
Observation mode	POINTING	POINTING	On-chip summing requested	N	N
[deg] Pointing RA	217.633579	217.6014585121212	Subarray requested	NONE	NONE
[deg] Pointing Dec	32.438361	32.44250167442831	Alternating exposures requested	N	N
[deg] Pointing Roll	140.784183	141.0101159051694	[s] Primary exposure time	0.000000	3.1
[mm] SIM focus pos	-0.782348	-0.7809083437167272			
[mm] SIM defocus	0	0.001439871863259334			
[mm] SIM translation stage pos	-233.592463	-233.5874344608287			
[mm] SIM translation stage offset	0	-0.005018542100998502			
[s] Observation start time (MET)	165492234.184000	165490688.22916			
Observation start date	2003-03-31T10:02:50	2003-03-31T09:38:08			
[s] Observation end time (MET)	165497134.184000	165497267.70444			
Observation end date	2003-03-31T11:24:30	2003-03-31T11:27:47			
Read mode	TIMED	TIMED			

2.3 Aspect



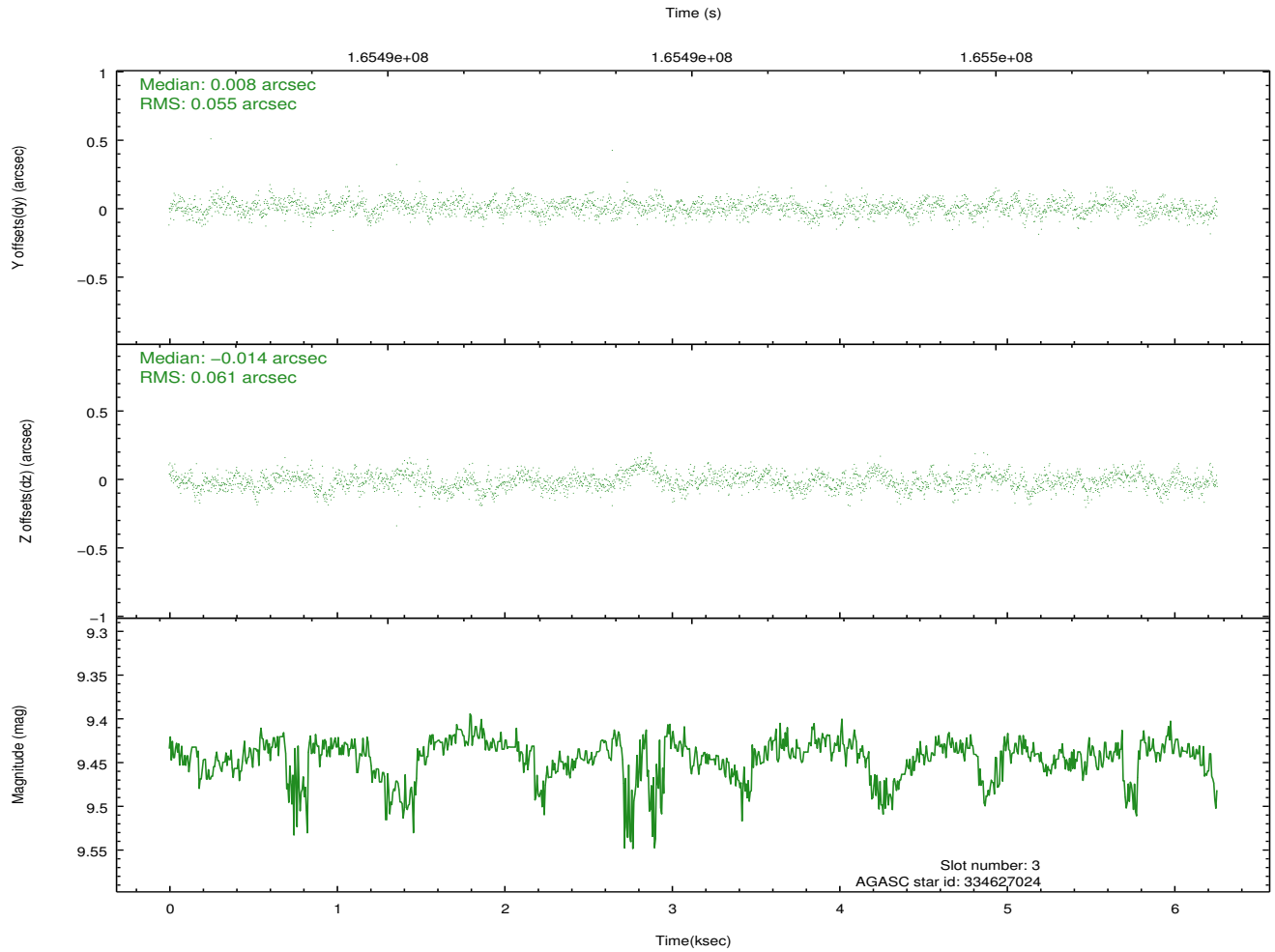
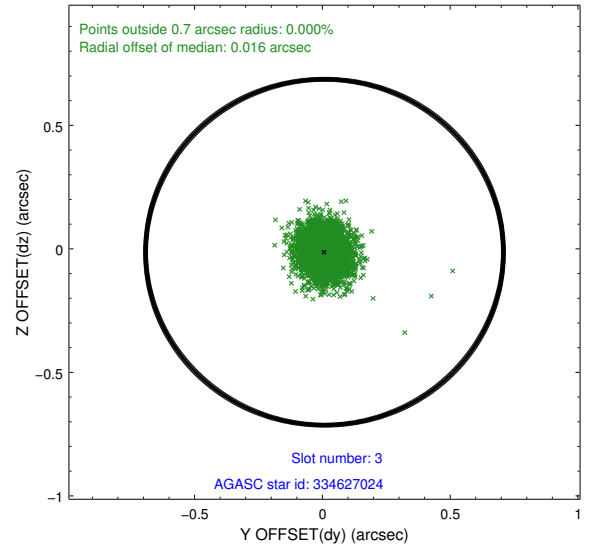
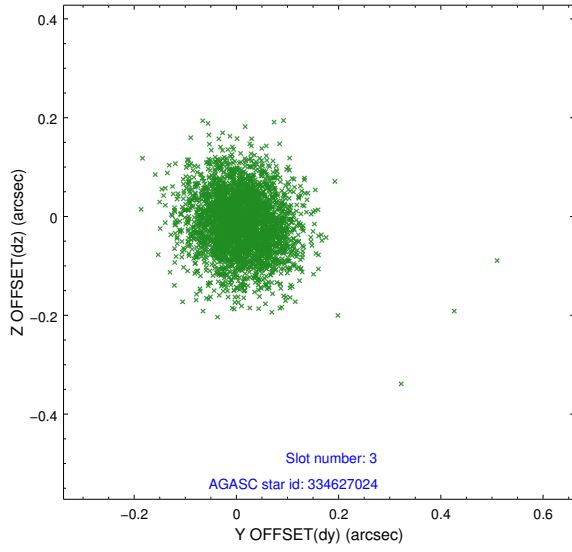


Slot Statistics

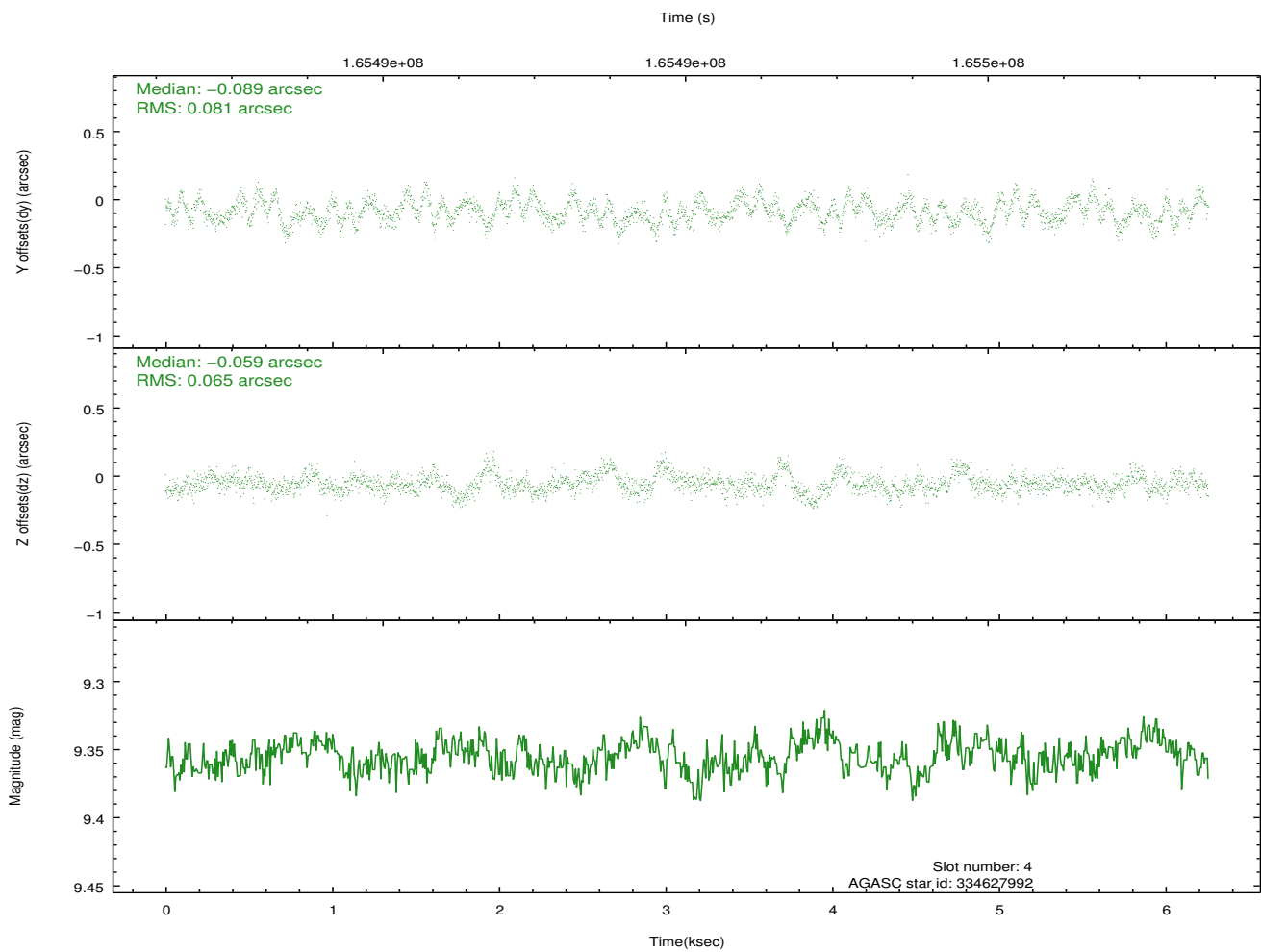
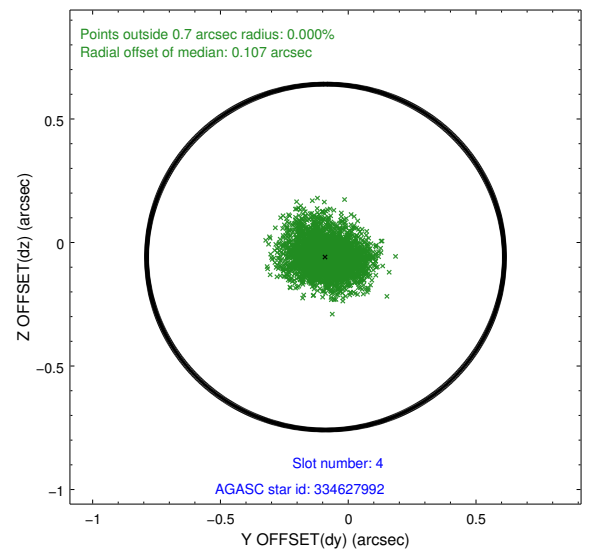
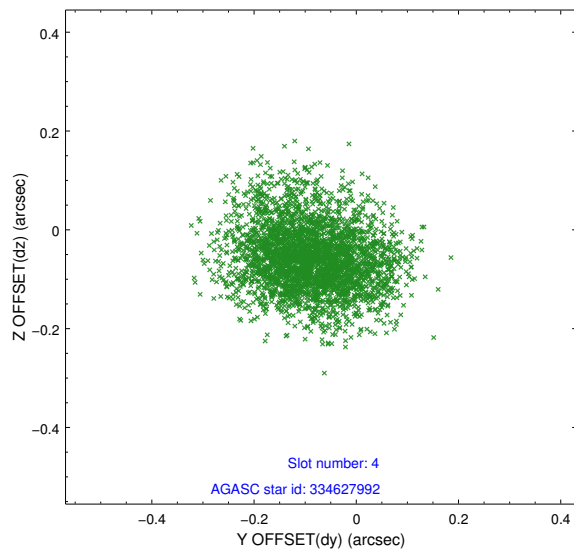
slot	status	id	mag	n_pts	med_dy	med_dz	dr1	dr2	ra	dec	mean_y	mean_z
0	FID	ACIS-I-1	7.25	1527	0.001	0.001	0.007	0.013	0.000000	0.000000	937.42	-829.62
1	FID	ACIS-I-5	7.24	1526	-0.069	0.044	0.006	0.011	0.000000	0.000000	-1810.21	1067.48
2	FID	ACIS-I-6	7.26	1527	-0.023	0.025	0.007	0.011	0.000000	0.000000	401.95	1713.00
3	GUIDE	334627024	9.44	3048	0.008	-0.014	0.085	0.139	217.318801	32.278221	378.48	1051.22
4	GUIDE	334627992	9.36	3050	-0.089	-0.059	0.111	0.178	216.814353	32.274859	1565.63	2025.56
5	GUIDE	334632896	9.68	3051	0.034	-0.187	0.113	0.182	217.366197	31.879526	-637.95	2074.97
6	GUIDE	335029384	8.50	3054	-0.076	0.192	0.081	0.127	217.848061	33.088477	978.87	-2221.92
7	GUIDE	334627032	9.93	3031	0.116	0.060	0.165	0.265	216.632536	32.266744	1979.50	2393.77

2.4 Star Slots

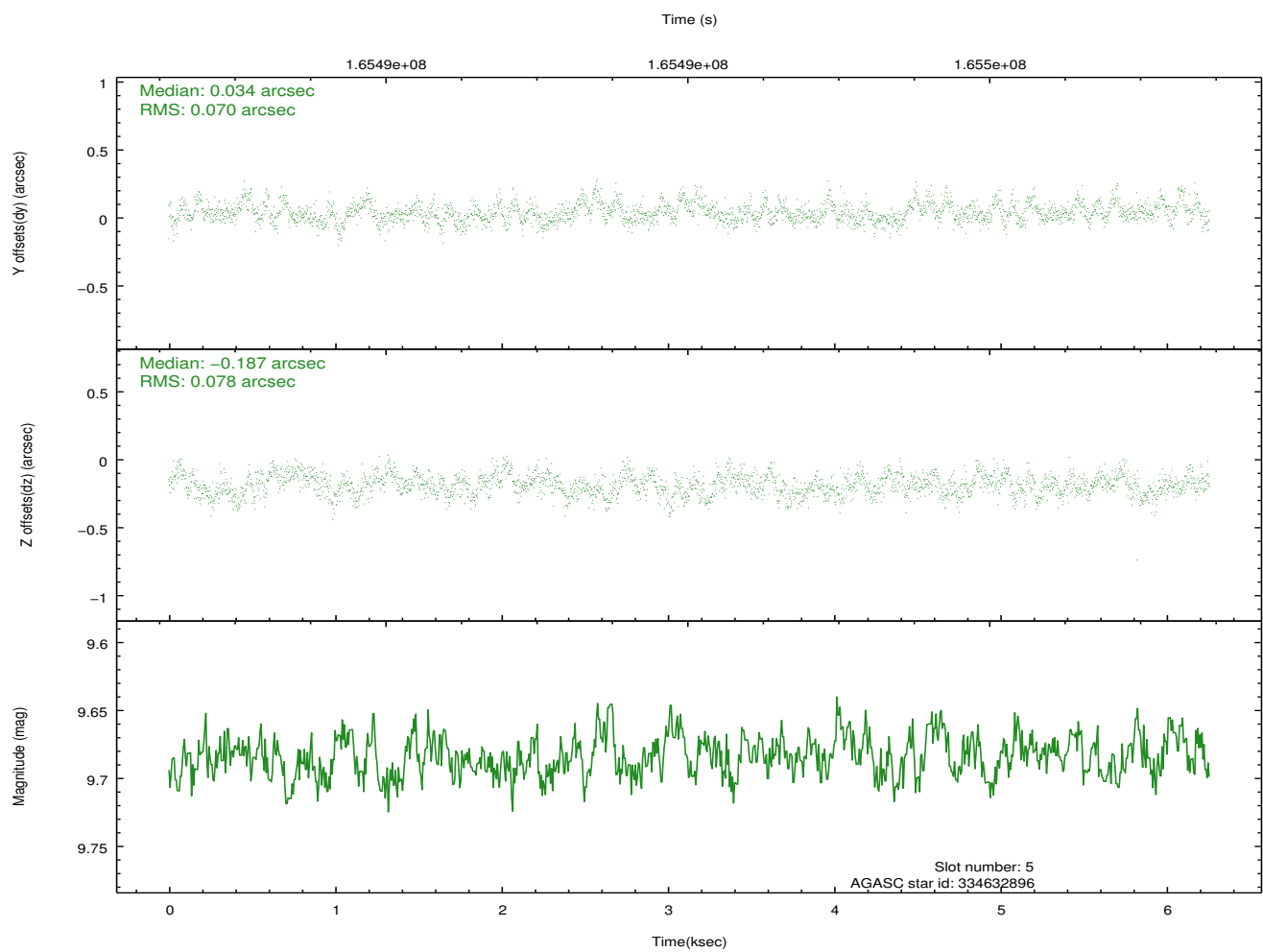
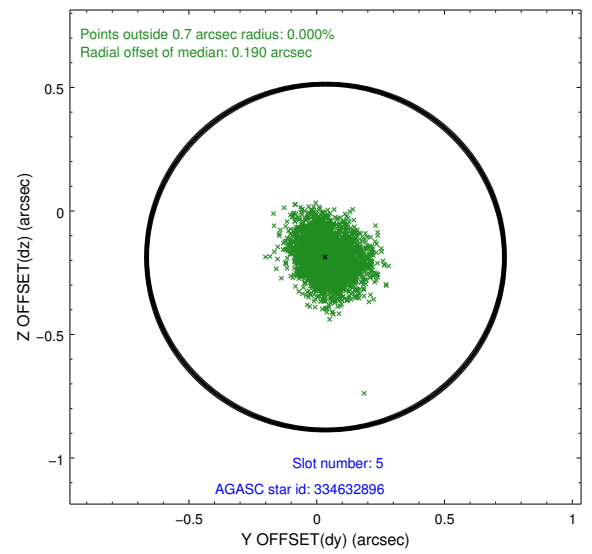
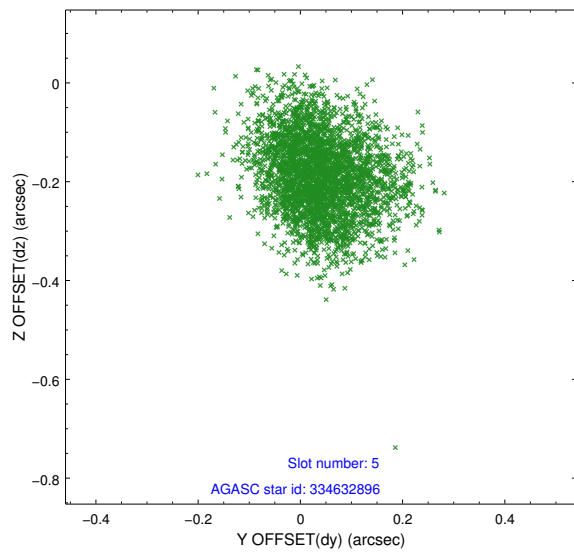
2.4.1 Slot 3



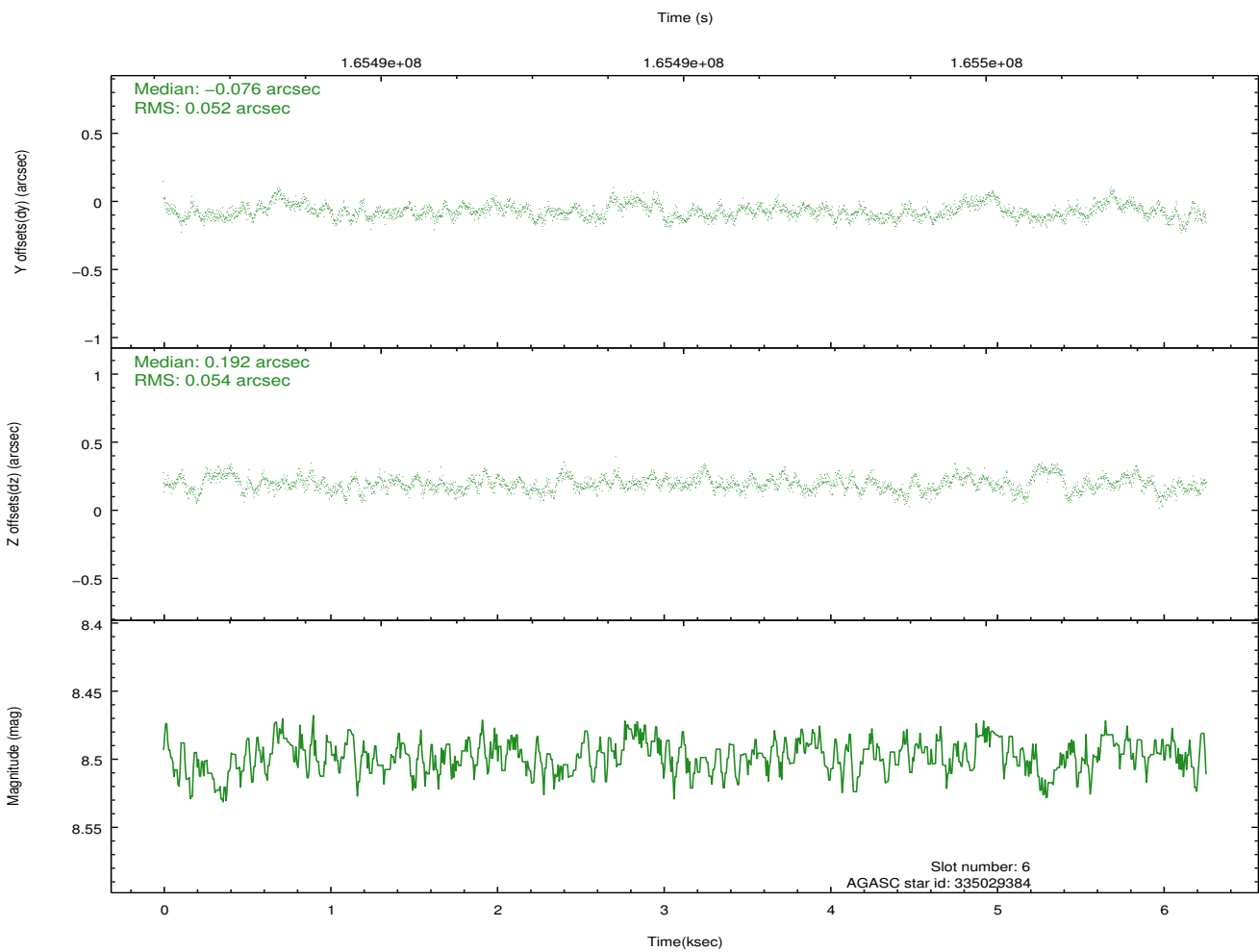
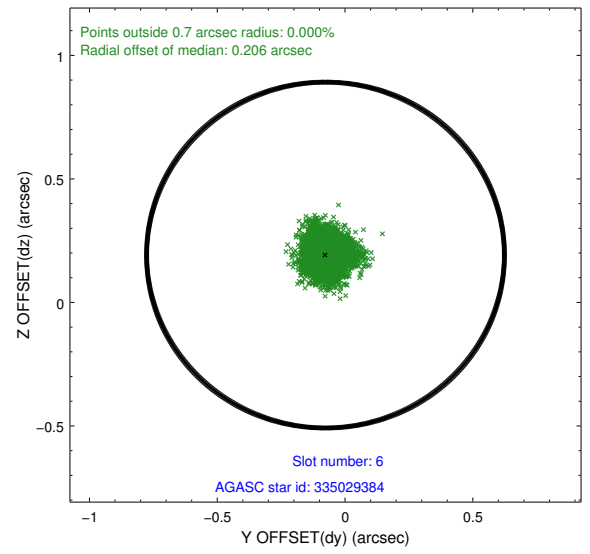
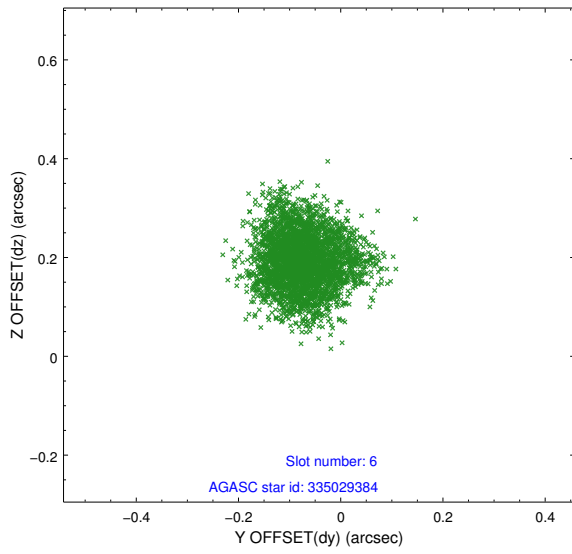
2.4.2 Slot 4



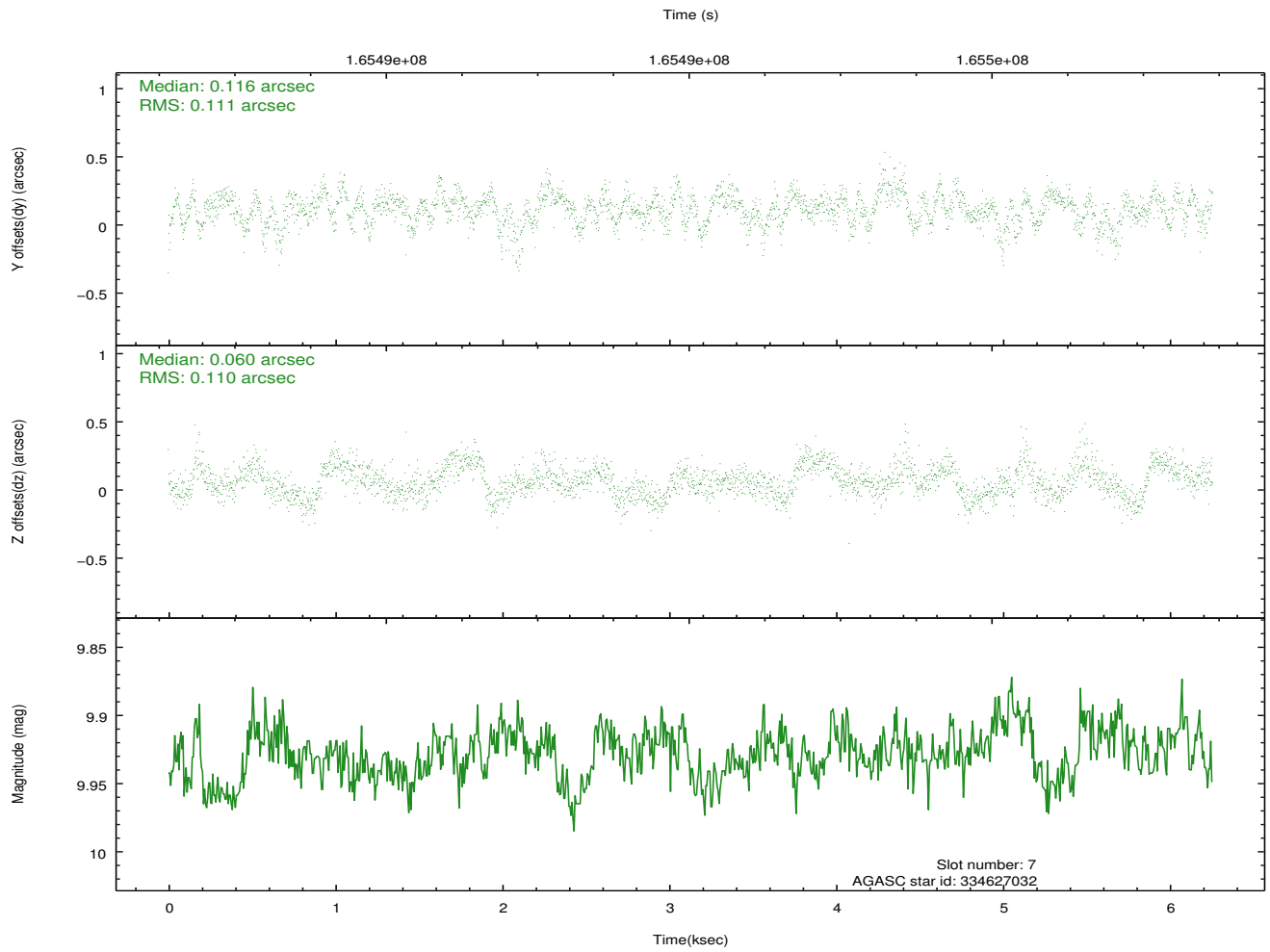
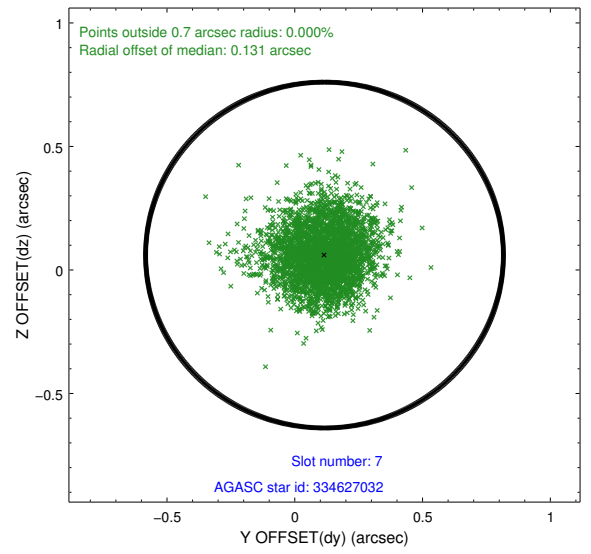
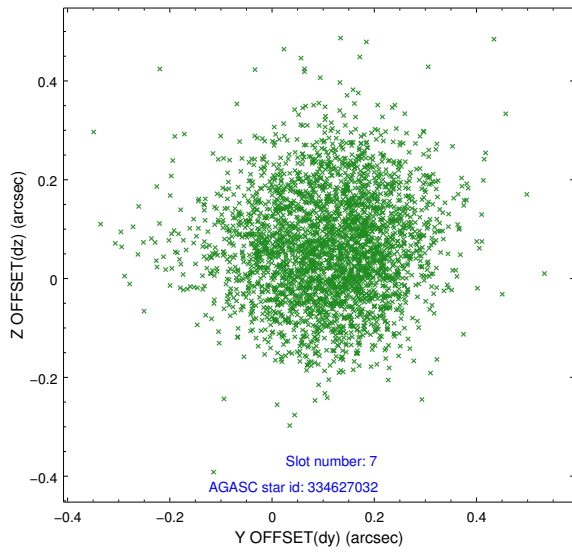
2.4.3 Slot 5



2.4.4 Slot 6

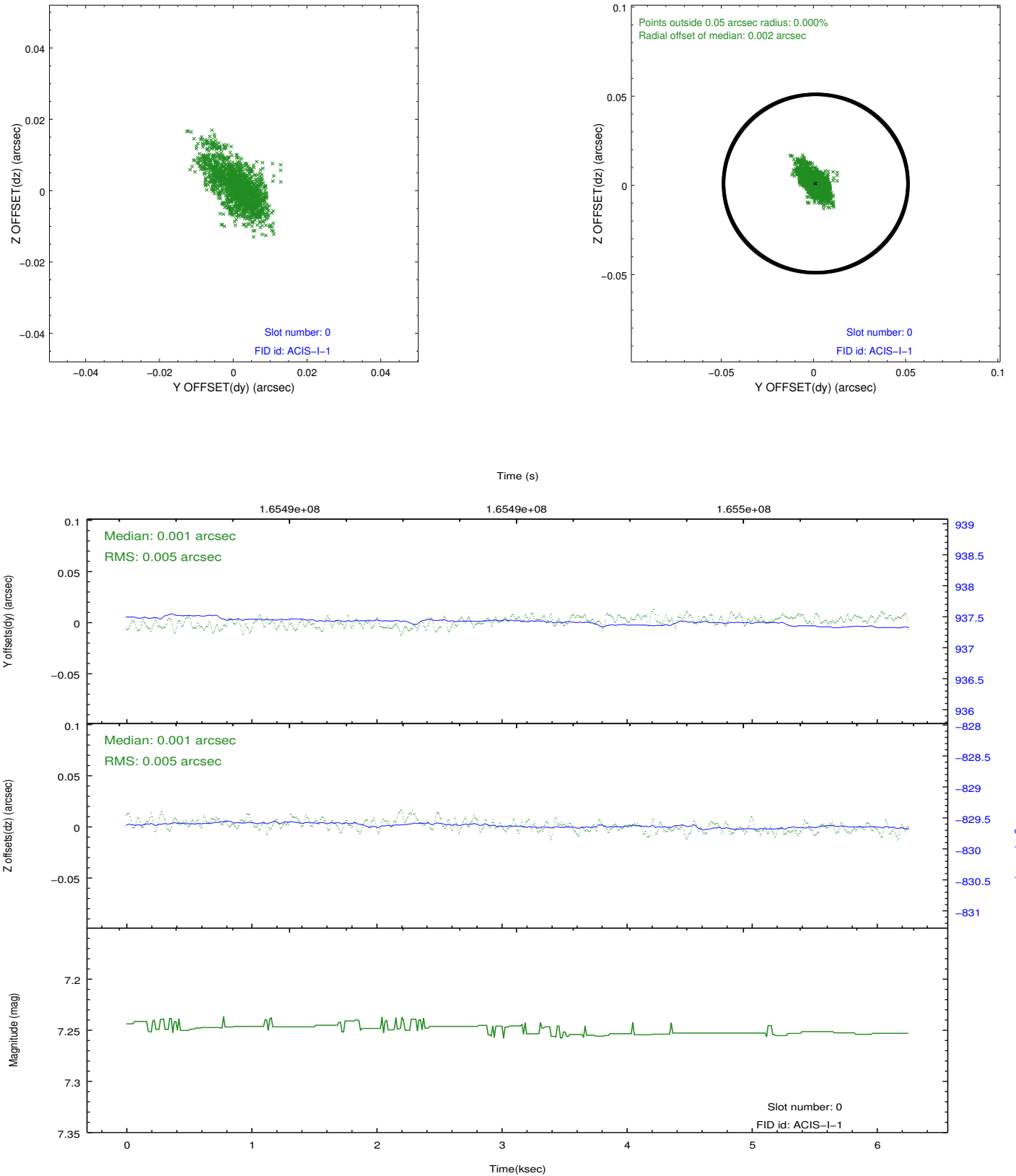


2.4.5 Slot 7

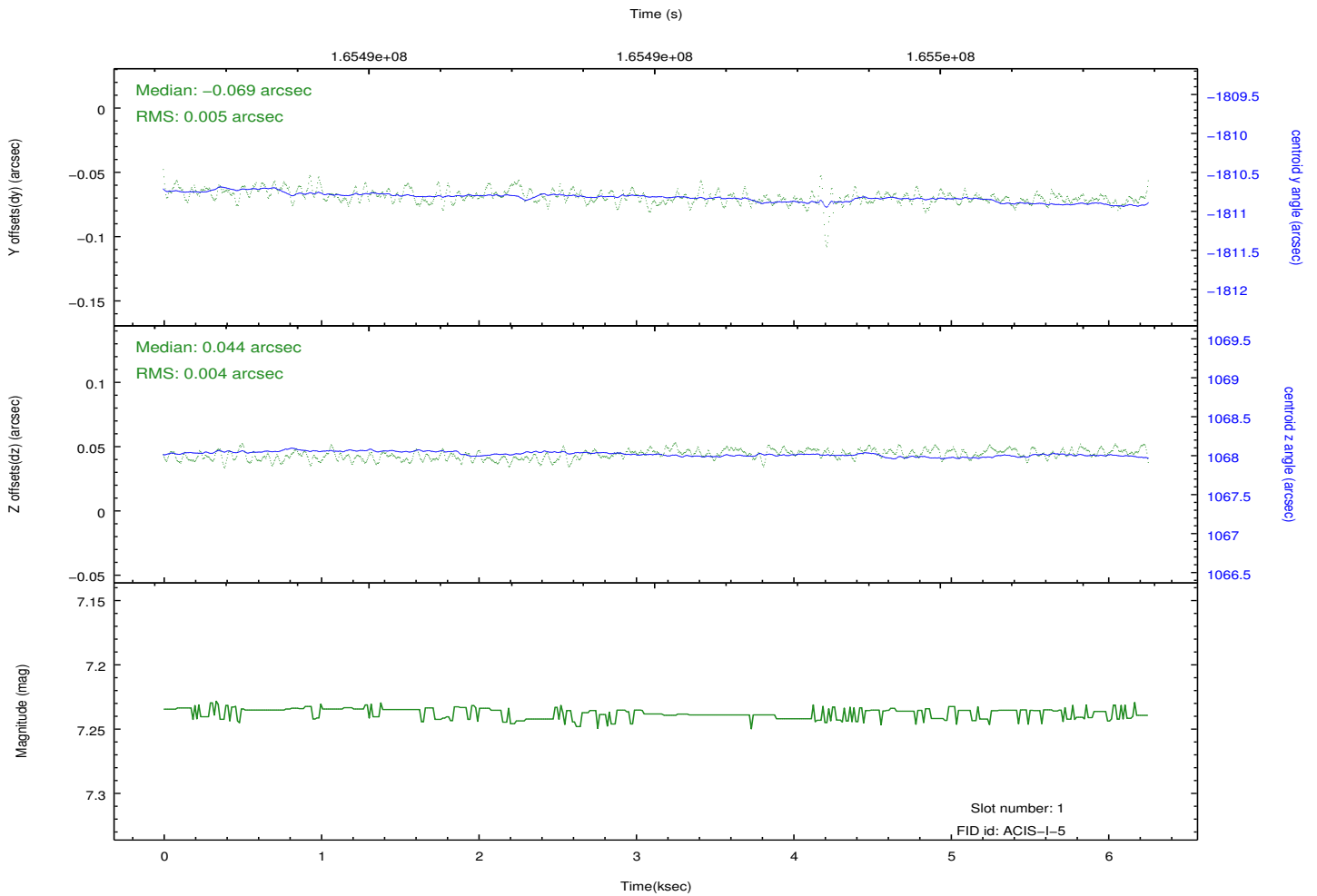
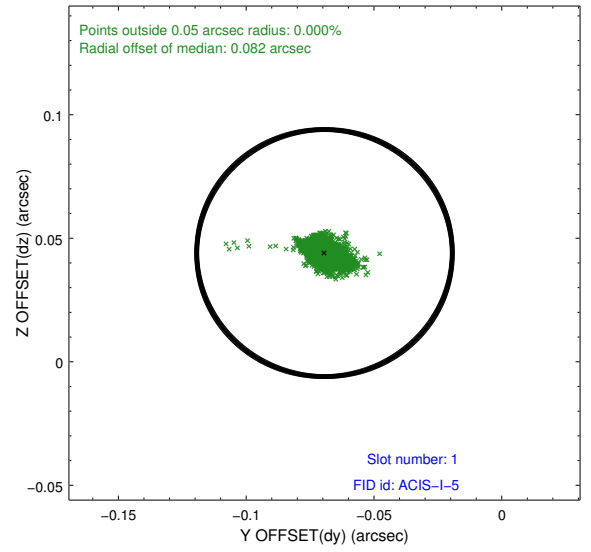
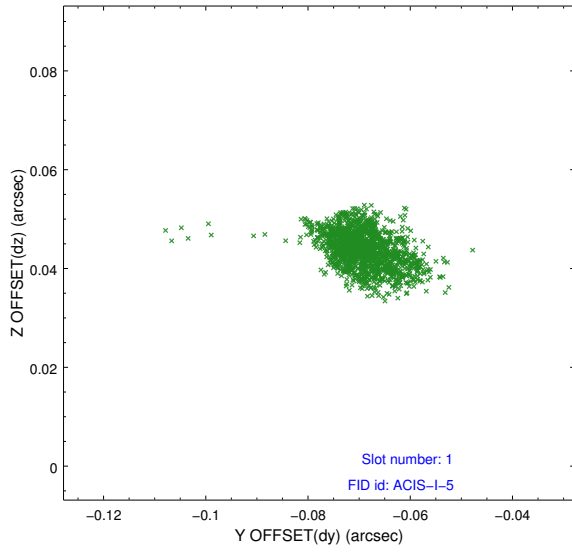


2.5 FID Slots

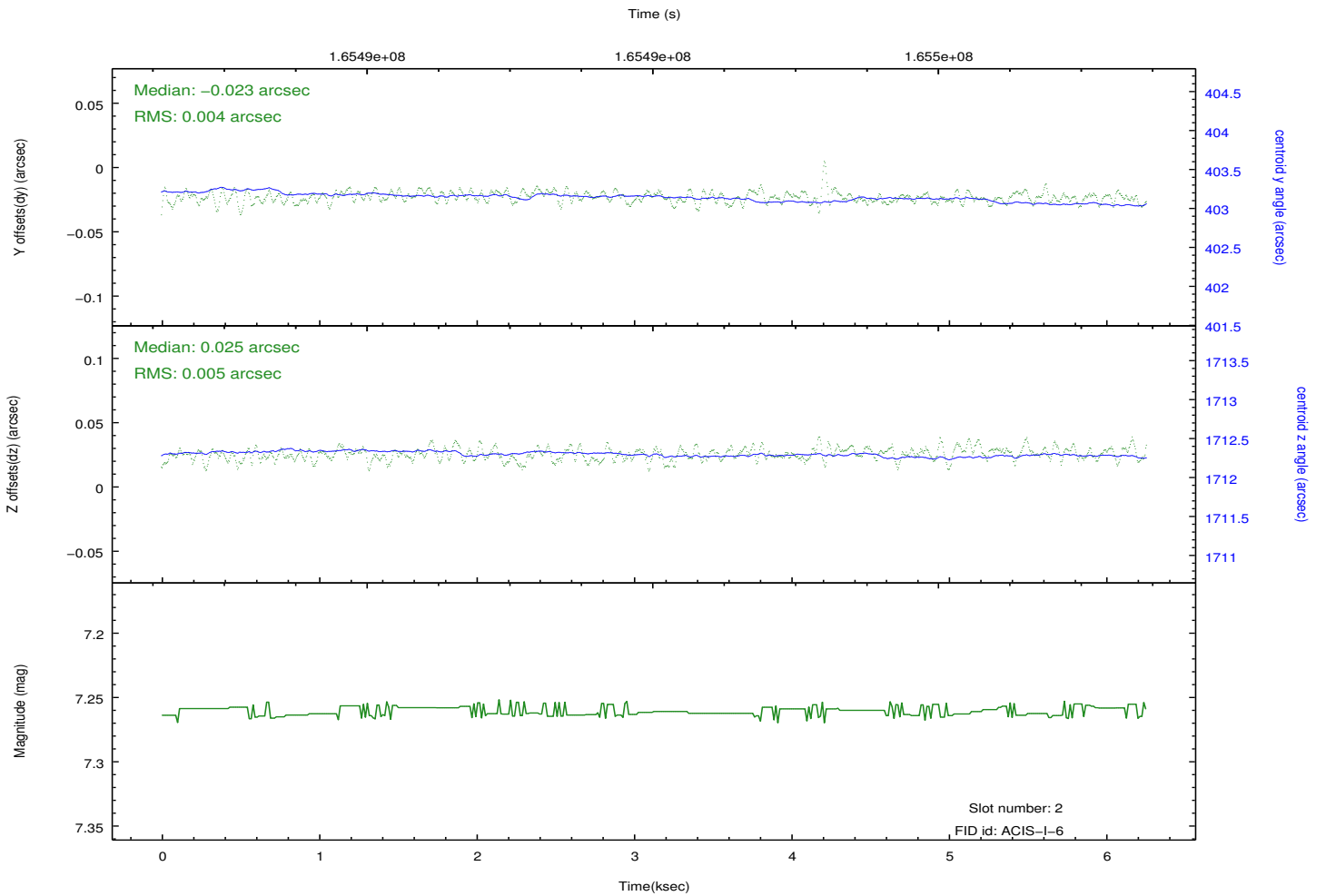
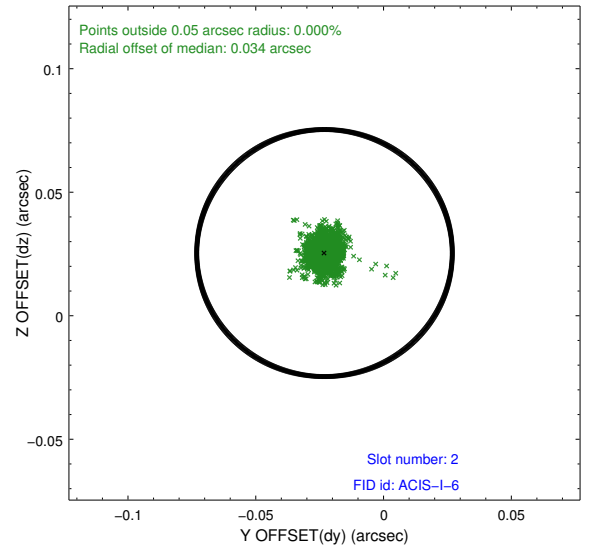
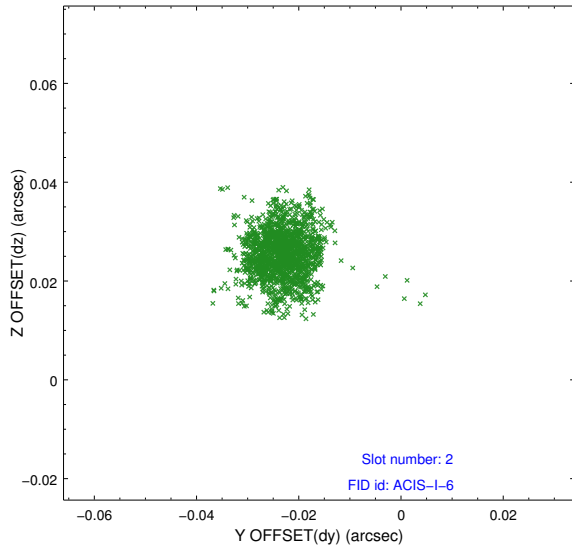
2.5.1 Slot 0



2.5.2 Slot 1



2.5.3 Slot 2



A Summary

A.1 Status

V&V Scientist	Jen Lauer
V&V Date (YYYY-MM-DD)	2012.11.09
V&V Edition	1
V&V Disposition and Status	OK
V&V Charge Time	5.021

A.2 Comments